

UC San Diego

UC San Diego Previously Published Works

Title

Spatially compartmentalized phase regulation of a Ca^{2+} -cAMP-PKA oscillatory circuit

Permalink

<https://escholarship.org/uc/item/3s875508>

Authors

Tenner, Brian

Getz, Michael

Ross, Brian

et al.

Publication Date

2020

DOI

10.7554/elife.55013

Copyright Information

This work is made available under the terms of a Creative Commons Attribution License, available at <https://creativecommons.org/licenses/by/4.0/>

Peer reviewed

Spatially compartmentalized phase regulation of a Ca^{2+} -cAMP-PKA oscillatory circuit

Brian Tenner^{1,2}, Michael Getz³, Brian Ross², Donya Ohadi⁴, Christopher H Bohrer¹, Eric Greenwald², Sohum Mehta², Jie Xiao¹, Padmini Rangamani^{3,4*}, Jin Zhang^{2,5*}

¹Department of Biophysics and Biophysical Chemistry, The Johns Hopkins University School of Medicine, Baltimore, United States; ²Department of Pharmacology, University of California, San Diego, La Jolla, United States; ³Chemical Engineering Graduate Program, University of California, San Diego, La Jolla, United States; ⁴Department of Mechanical and Aerospace Engineering, University of California, San Diego, La Jolla, United States; ⁵Department of Chemistry and Biochemistry, University of California, San Diego, La Jolla, United States

Abstract Signaling networks are spatiotemporally organized to sense diverse inputs, process information, and carry out specific cellular tasks. In β cells, Ca^{2+} , cyclic adenosine monophosphate (cAMP), and Protein Kinase A (PKA) exist in an oscillatory circuit characterized by a high degree of feedback. Here, we describe a mode of regulation within this circuit involving a spatial dependence of the relative phase between cAMP, PKA, and Ca^{2+} . We show that in mouse MIN6 β cells, nanodomain clustering of Ca^{2+} -sensitive adenylyl cyclases (ACs) drives oscillations of local cAMP levels to be precisely in-phase with Ca^{2+} oscillations, whereas Ca^{2+} -sensitive phosphodiesterases maintain out-of-phase oscillations outside of the nanodomain. Disruption of this precise phase relationship perturbs Ca^{2+} oscillations, suggesting the relative phase within an oscillatory circuit can encode specific functional information. This work unveils a novel mechanism of cAMP compartmentation utilized for localized tuning of an oscillatory circuit and has broad implications for the spatiotemporal regulation of signaling networks.

*For correspondence: padmini.rangamani@eng.ucsd.edu (PR); jzhang32@ucsd.edu (JZ)

Competing interest: See page 16

Funding: See page 16

Received: 09 January 2020

Accepted: 07 October 2020

Published: 17 November 2020

Reviewing editor: Satyajit Mayor, Marine Biological Laboratory, United States

© Copyright Tenner et al. This article is distributed under the terms of the [Creative Commons Attribution License](https://creativecommons.org/licenses/by/4.0/), which permits unrestricted use and redistribution provided that the original author and source are credited.

Introduction

Cyclic adenosine monophosphate (cAMP) and Ca^{2+} act as essential second messengers in almost every cell type and regulate many functional pathways within a cell, such as hormonal signal transduction, metabolism, and secretion (Clapham, 2007; Sassone-Corsi, 2012). In some cell types, including neurons, cardiomyocytes, and pancreatic β cells, these messengers' concentrations oscillate intracellularly (Dupont et al., 2011; Dyachok et al., 2006), and the oscillations encode critical signaling information (e.g. signal strength, duration, and target diversity) into parameters such as frequency and amplitude (Berridge et al., 1998; De Pittà et al., 2008; Parekh, 2011). This phenomenon is perhaps best exemplified in β cells, where oscillations of Ca^{2+} drive pulsatile insulin secretion (Rorsman and Ashcroft, 2018) and oscillating cAMP levels (Nesher et al., 2002; Tengholm, 2012). Furthermore, Ca^{2+} , cAMP, and the downstream cAMP-dependent kinase protein kinase (PKA) constitute a highly coordinated oscillatory circuit responsible for integrating metabolic and signaling information (Ni et al., 2011). In addition to temporal control, biochemical pathways are also spatially organized within the cell (Smith and Scott, 2002; White and Anderson, 2005). Both Ca^{2+} and cAMP are highly spatially compartmentalized and form signaling microdomains or nanodomains (Calebiro and Maiellaro, 2014; Petersen, 2002). While Ca^{2+} levels are locally controlled by

channels, pumps, and intracellular buffering systems (Clapham, 2007; Stern, 1992), cAMP is thought to be regulated via controlled synthesis by adenylyl cyclases (ACs) and degradation by phosphodiesterases (PDEs) (Bender and Beavo, 2006; Defer et al., 2000). Despite extensive studies on cAMP compartmentation, the mechanisms that spatially constrain this mobile second messenger await to be fully elucidated (Saucerman et al., 2014; Lohse et al., 2017; Mueshele et al., 2018; Bock et al., 2020; Zhang et al., 2020). Furthermore, it is not clear how the spatial regulation of a second messenger influences its dynamic behaviors in the context of coordinated oscillations.

In this study, we investigated the spatiotemporal organization of the Ca^{2+} -cAMP-PKA oscillatory circuit in MIN6 β cells and discovered that the relative oscillatory phase between cAMP/PKA and Ca^{2+} is spatially regulated within signaling nanodomains. By combining dynamic live-cell imaging, super-resolution microscopy, and computational modeling, we further found that fine-scale, compartment-specific perturbations of this precise phase regulation impact Ca^{2+} oscillations in β cells. These findings suggest that the relative phase in oscillatory signaling circuits, like the amplitude and frequency, represents yet another mode of informational encoding and processing, which is subjected to spatiotemporal regulation within the cell.

Results

The relative phase of β cell cAMP and Ca^{2+} oscillations is compartmentalized

In order to study the spatiotemporal relationship between key players of the Ca^{2+} -cAMP-PKA circuit, we chose to focus our attention on an important class of molecular scaffolds, A-kinase anchoring proteins (AKAPs), which are responsible for recruiting PKA to specific substrates at distinct subcellular locations. In several excitable cell types, the plasma membrane (PM)-localized scaffold protein AKAP79 (rodent ortholog AKAP150) has been shown to organize a macromolecular complex with binding partners that include PKA, the voltage-gated Ca^{2+} channel $\text{Ca}_v1.2$, Protein Kinase C (PKC), the Ca^{2+} /calmodulin-dependent protein phosphatase calcineurin, Ca^{2+} -sensitive ACs, AMPA receptors, and many others (Gold et al., 2011). Due to the extensive and multivalent nature of AKAP79/150 (as the scaffold is commonly referred) and a report describing the functional impairment of glucose-stimulated insulin secretion (GSIS) in pancreatic β cells upon its knock-out (Hinke et al., 2012), we hypothesized that the AKAP79/150 scaffold might play an important role in the spatiotemporal regulation of the Ca^{2+} -cAMP-PKA oscillatory circuit. Specifically, we were interested in testing if AKAP79/150 is able to create a spatially-distinct compartment in which recruitment of signaling effectors can locally fine-tune and reshape signaling dynamics within the circuit (Beene and Scott, 2007; Greenwald and Saucerman, 2011).

To test this hypothesis, we monitored intracellular cAMP and Ca^{2+} using the FRET-based cAMP biosensor (Ci/Ce)Epac2-camps (Everett and Cooper, 2013) and the red Ca^{2+} indicator RCaMP (Akerboom et al., 2013). We measured cAMP concentration changes in the immediate vicinity of AKAP150 in mouse MIN6 β cells by using (Ci/Ce)Epac2-camps fused to the full-length AKAP79 scaffold (gene AKAP5) (Figure 1a). Although human AKAP79 and the rodent AKAP150 share only 53% sequence identity overall, the interaction motifs and association between the AKAP scaffold and other key signaling players such as PKA, the voltage-gated calcium channel, adenylyl cyclases, and calcineurin are highly conserved (Willoughby et al., 2010; Zhang et al., 2016). The primary difference between these two closely related scaffolds is the presence of an internal repetitive amino acid sequence of unknown function in AKAP150 (Robertson et al., 2009). The functional equivalence of AKAP79 and AKAP150 has been demonstrated in several reciprocal knock-out and recovery experiments in which AKAP79 or AKAP150 was knocked out and expression of the other was shown to rescue a measured phenotype (Hoshi et al., 2005; Zhang et al., 2011). As a control, we also targeted the cAMP probe to the general plasma membrane by adding a lipid modification domain (Wachten et al., 2010). These targeted biosensors allowed us to compare the dynamics within the AKAP79/150-specific compartment versus the general plasma membrane compartment (Figure 1a).

Although both targeted sensors were trafficked to and distributed along the plasma membrane (Figure 1—figure supplement 1a,b), we observed notable differences in their respective cAMP signals relative to Ca^{2+} oscillations after triggering the circuit (Figure 1b) with tetraethylammonium chloride (TEA, 20 mM), a potent K^+ channel blocker. cAMP oscillations measured within the

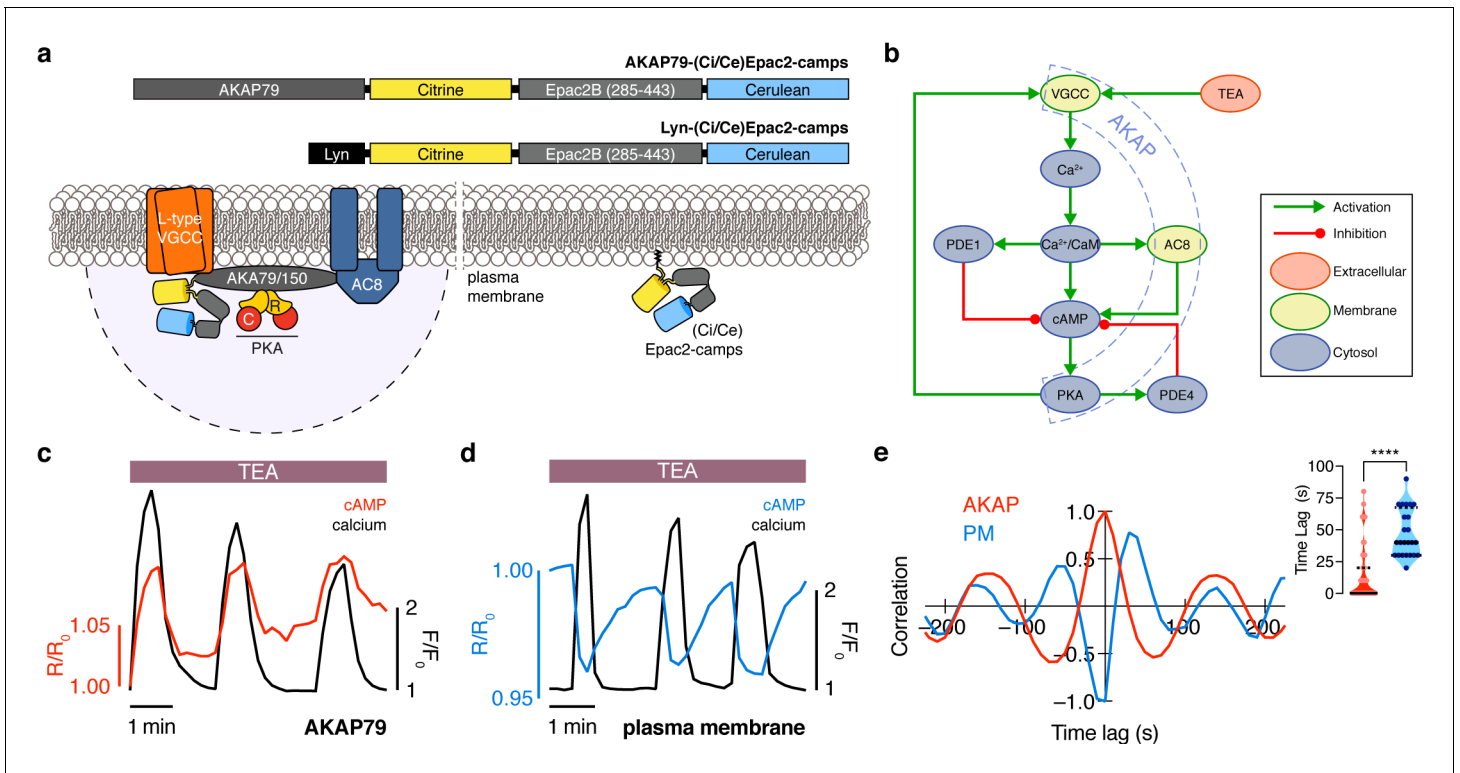


Figure 1. The phase of oscillating cAMP is shifted between the AKAP79/150 compartment and the general plasma membrane compartment, relative to Ca^{2+} . (a) Depiction of the AKAP79/150 and plasma membrane compartments, including the targeted cAMP biosensor (Ci/Ce)Epac2-camps to measure the compartment-specific cAMP signaling. Schematics of the lyn-(Ci/Ce)Epac2-camps and AKAP79-(Ci/Ce)Epac2-camps sensors are shown above. (b) Network diagram describing the key players in the β cell Ca^{2+} -cAMP-PKA oscillatory circuit. (c) Representative single-cell trace of in-phase oscillating responses of AKAP79-(Ci/Ce)Epac2-camps and RCaMP, whole-cell fluorescence measured. Red trace is cAMP (cyan direct channel divided by CY-FRET channel) and black trace is Ca^{2+} (RFP). (d) Representative single-cell trace of out-of-phase oscillating responses of lyn-(Ci/Ce)Epac2-camps and RCaMP, whole-cell fluorescence measured. Blue trace is cAMP (cyan direct channel divided by CY-FRET channel) and black trace is Ca^{2+} (RFP). (e) Cross-correlation between the oscillatory Ca^{2+} and cAMP signals from the representative in-phase AKAP79 (red) and out-of-phase plasma membrane (PM, blue) responses from c, d. Time lag (sec) between the cAMP and Ca^{2+} signals for the two compartments (AKAP79/150, red, is 13 ± 3 sec $n=60$ and PM, blue, is 47 ± 4 sec $n=24$). **** $p < 0.0001$; unpaired two-tailed Student's t-test.

The online version of this article includes the following figure supplement(s) for figure 1:

Figure supplement 1. The AKAP79/150 and PM-targeted sensors are localized at the plasma membrane.

Figure supplement 2. Cytosolic and AKAP79-specific cAMP oscillations are anti-correlated in the same cell.

AKAP79/150 compartment were in-phase with oscillating Ca^{2+} , such that each transient spike in intracellular Ca^{2+} was closely associated with a transient increase in cAMP (Figure 1c) ($n = 60$ cells). This was in sharp contrast to cAMP oscillations measured within the general plasma membrane compartment, where each local Ca^{2+} peak corresponded to a local trough in cAMP ($n = 24$), followed by a slow reversal of both signals to a pre-stimulated baseline (Figure 1d). While these out-of-phase cAMP- Ca^{2+} oscillations were consistent with those observed in the cytoplasm of β cells (Landa et al., 2005; Ni et al., 2011), in-phase cAMP- Ca^{2+} oscillations had not previously been observed under these conditions. To quantify the cAMP- Ca^{2+} phase relationship, we measured the lag time by calculating the cross-correlation between the two normalized, oscillatory signals and finding the shortest delay yielding the maximum correlation (see Appendix 1 for details) (Figure 1e). In-phase cAMP oscillations corresponded to short lag times (typically < 20 s), while out-of-phase oscillations mostly possessed longer lag times. Within the AKAP79/150 compartment, cAMP lagged behind Ca^{2+} by an average of only 13 ± 3 s (mean \pm SEM, $n = 60$); however, cAMP within the general plasma membrane compartment oscillated with a lag time of 47 ± 4 s ($n = 24$) behind Ca^{2+} (Figure 1e). In order to measure these different cAMP dynamics within the same cells, we transfected MIN6 cells with two cAMP sensors of different targeting sequences and colors, AKAP79-(Ci/

Ce)Epac2-camps and the red cytosolic cAMP sensor R-Flnca (Ohta *et al.*, 2018). After stimulating the signaling circuit, we observed anti-correlated cAMP oscillations, indicating that cAMP oscillates with different phases between the cytosol/plasma membrane and the immediate vicinity of AKAP79/150 within the same cell ($n = 25$) (Figure 1—figure supplement 2). This stark difference in the cAMP- Ca^{2+} phase relationship suggests that the relative phase of this oscillatory circuit is compartmentalized and hints at differential regulation of the circuit between the AKAP79/150 compartment and the general plasma membrane compartment.

Oscillatory phase is regulated by balanced activities of Ca^{2+} -sensitive ACs and PDEs

Given that in-phase cAMP oscillations were only observed within the AKAP79/150 compartment (Figure 1c) and that out-of-phase cAMP oscillations were observed in the general plasma membrane compartment (Figure 1d) and the cytoplasm (Ni *et al.*, 2011), we hypothesized that Ca^{2+} oscillations are coupled to cAMP oscillations by a ubiquitous mechanism throughout the cell, while additional mechanisms specifically regulate the phase relationship within the AKAP79/150 compartment. We first sought to identify the component that is responsible for coupling cAMP dynamics to Ca^{2+} dynamics globally. Since TEA induces continuous Ca^{2+} oscillations, we determined the temporal relationship between Ca^{2+} and cAMP at the general plasma membrane more precisely by measuring the impulse response of the circuit following a transient membrane depolarization. After the addition of KCl (15 mM) followed by a subsequent washout to elicit a transient influx of Ca^{2+} (Dou *et al.*, 2015), we observed a synchronous cAMP decrease ($n = 20$) followed by a return to baseline (Figure 2a). These data suggest that increasing cytosolic Ca^{2+} was coupled to a decrease in cAMP at the plasma membrane through Ca^{2+} -sensitive AC or PDE activities. Given that Ca^{2+} -inhibited ACs (AC5, AC6) have low specific activity in both the presence and absence of physiological Ca^{2+} , as well as relatively low expression in the pancreas (Defer *et al.*, 2000), we instead focused on probing the role of PDEs. The Ca^{2+} -dependent PDE1 family in β cells, specifically PDE1C, has been implicated in modulating GSIS (Han *et al.*, 1999). Indeed, acute addition of 8MM-IBMX (100 μM), a relatively selective PDE1 inhibitor, effectively uncoupled cAMP dynamics from Ca^{2+} oscillations (Figure 2b, Figure 2—figure supplement 1a) ($n = 18$), indicating that Ca^{2+} -triggered activation of PDE1 mediates the transient cAMP decreases. We also observed that the overall increase in cAMP led to an increase in the Ca^{2+} oscillation frequency, consistent with the previously identified role of cAMP/PKA in regulating the Ca^{2+} oscillations (Ni *et al.*, 2011). We tested the roles of two additional families of abundant PDEs in pancreatic β cells, PDE3 and PDE4, by acute pharmacologic inhibition. While treating cells with either milrinone (PDE3 inhibitor, 10 μM , $n = 12$) or rolipram (PDE4 inhibitor, 1 μM , $n = 15$) slightly increased cAMP levels, neither inhibitor had an effect on cAMP- Ca^{2+} coupling or relative phase (Figure 2—figure supplement 1b,c). These data suggest that PDE1 is the key component that couples Ca^{2+} and cAMP oscillations within this signaling circuit.

How is the phase relationship between Ca^{2+} and cAMP-regulated within distinct signaling compartments? In order to gain a more quantitative understanding of the regulation of the cAMP- Ca^{2+} phase relationship, we created a simplified well-mixed mathematical model involving Ca^{2+} , cAMP, and Ca^{2+} -driven PDE and AC activity components (Cooper *et al.*, 1995; Figure 2c, see Appendix 1 for details). This simple circuit represents the key aspects of the oscillatory cAMP- Ca^{2+} circuit and is applicable to different signaling compartments. Opposite to the Ca^{2+} -stimulated PDE1 (Ang and Antoni, 2002) is the Ca^{2+} -stimulated AC8 (gene *Adcy8*) (Masada *et al.*, 2009; Masada *et al.*, 2012), an abundant Ca^{2+} -sensitive transmembrane AC isoform in β cells that has been shown to mediate sustained insulin secretion and associate with the AKAP79/150 scaffold (Dou *et al.*, 2015; Willoughby and Cooper, 2006; Willoughby *et al.*, 2010). By computationally manipulating the activity of each arm, we found that cAMP can oscillate either out-of-phase or in-phase when a Ca^{2+} pulse train is used as an input (Figure 2c). In particular, when the relative activity of PDE1 is greater than the activity of AC8, Ca^{2+} -driven cAMP degradation dominates, resulting in an out-of-phase cAMP- Ca^{2+} relationship. On the other hand, if the relative activity of AC8 is greater than that of PDE1, Ca^{2+} -stimulated cAMP production is favored, and an in-phase relationship is observed, consistent with previous modeling studies (Fridlyand *et al.*, 2007; Peercy *et al.*, 2015).

Thus, our simplified model indicates that the phase relationship can be tuned by altering the relative strength between Ca^{2+} -sensitive ACs and PDEs (Figure 2c). This model provided a blueprint for understanding the interplay between the Ca^{2+} -stimulated AC/PDE balance and the cAMP- Ca^{2+}

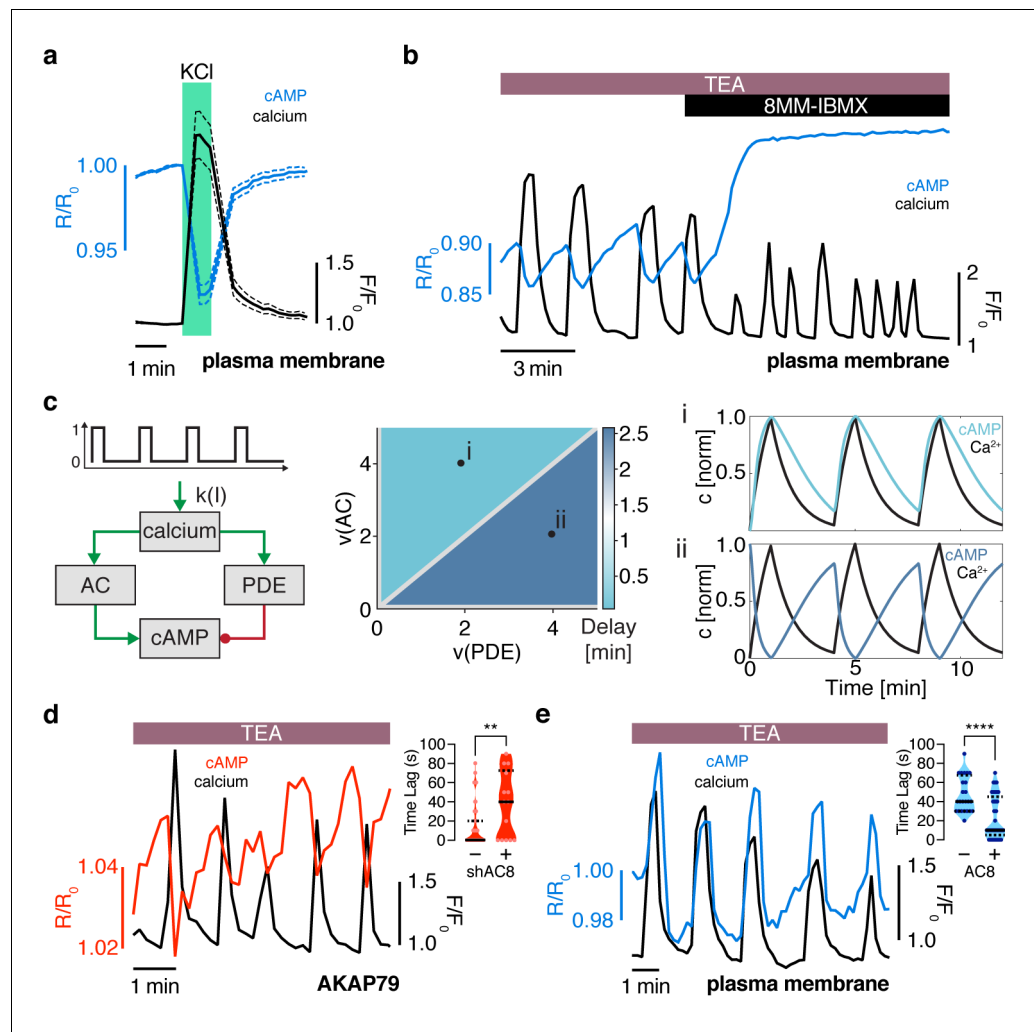


Figure 2. The oscillation phase is regulated by a balance between Ca^{2+} -sensitive AC and PDE activity. (a) Impulse response of plasma membrane cAMP (blue) to a spike in Ca^{2+} entry (black), triggered by KCl-mediated membrane depolarization (wash in/out). The transient decrease in PM-cAMP is coupled to the transient increase in intracellular Ca^{2+} . (b) Acute inhibition of Ca^{2+} -sensitive PDE1 decouples the out-of-phase PM-cAMP oscillations from Ca^{2+} oscillations, as observed in this representative cell trace (Ca^{2+} – black, PM-cAMP – blue). (c) The oscillatory phase of cAMP can be manipulated by tuning the relative activity of Ca^{2+} -sensitive PDE and AC, as demonstrated by a simplified mathematical model. The schematic shows the network architecture. The relative activities of AC and PDE, denoted as $v(\text{AC})$ and $v(\text{PDE})$, control the delay between Ca^{2+} and cAMP. Point (i), with high AC activity and low PDE, shows in phase oscillations of Ca^{2+} and cAMP, whereas point (ii), with high PDE and low AC activity shows out of phase oscillations. These dynamics are shown in the line graphs. (d) Knocking down AC8 is correlated with an increase in the time lag for oscillatory cAMP at the AKAP79/150 microdomain (37 ± 9 s, $n = 11$), indicating more cells exhibiting out-of-phase cAMP oscillations (representative cell trace, Ca^{2+} – black, AKAP79/150-cAMP – red). (e) Over-expressing AC8 is sufficient to reverse the phase at the PM to in-phase (23 ± 2 s, $n = 56$) (representative cell trace, Ca^{2+} – black, PM cAMP – blue). ** $p=0.0014$, **** $p<0.0001$; unpaired two-tailed Student's t-test.

The online version of this article includes the following figure supplement(s) for figure 2:

Figure supplement 1. The Ca^{2+} -dependent cAMP response is dependent on PDE1, but not PDE3 or PDE4.

Figure supplement 2. The cAMP- Ca^{2+} phase relationship at the PM can be tuned by expression of the Ca^{2+} -dependent AC8.

Figure supplement 3. No difference in endogenous AC8 levels is observed between cells expressing AKAP79-(Ci/Ce)Epac2-camps and lyn-(Ci/Ce)Epac2-camps.

phase relationship within the AKAP79/150 compartment. Based on the findings from our model, we predicted that decreasing the relative contribution of AC8 will shift the cAMP-Ca²⁺ phase relationship from in-phase to out-of-phase. To test this prediction, we knocked down endogenous AC8 in MIN6 cells as previously done (Raoux *et al.*, 2015) and observed that most cells exhibited out-of-phase cAMP oscillations within the AKAP79/150 compartment (average lag time 37 ± 9 s, n = 11) (Figure 2d), indicating an AC8-specific role in mediating the cAMP-Ca²⁺ phase signature.

Conversely, increasing the relative contribution of AC8, for example, by increasing the concentration of AC8 throughout the PM, should shift the cAMP-Ca²⁺ phase relationship from out-of-phase to in-phase. To test this prediction, we overexpressed full-length AC8 and examined the effect in the general plasma membrane compartment. Interestingly, we found that AC8 overexpression reversed the out-of-phase cAMP-Ca²⁺ phase relationship in a titratable manner, where the percentage of in-phase oscillating cells correlated with increasing amounts of co-transfected AC8 (average lag time 23 ± 2 s, n = 56) (Figure 2e, Figure 2—figure supplement 2a–d). In order to examine the effects of the targeted cAMP biosensors on AC8 expression, we also measured endogenous AC8 levels in cells transfected with either lyn-(Ci/Ce)Epac2-camps or AKAP79-(Ci/Ce)Epac2-camps and observed no significant difference (Figure 2—figure supplement 3a,b). These data demonstrate that higher levels of AC8 are sufficient to reverse the cAMP phase at the plasma membrane. In summary, these phase-manipulation experiments suggest that the cAMP-Ca²⁺ phase relationship is representative of a sensitive, compartmentalized balance between the Ca²⁺-stimulated activities of PDE1 and AC8.

Membrane-localized AKAP150:AC8 nanoclusters regulate cAMP-Ca²⁺ oscillatory phase

The close spatial juxtaposition between the AKAP79/150 and general plasma membrane compartments presents a significant challenge for cAMP compartmentation, in that cAMP oscillations must be distinctly regulated within these adjacent signaling domains. Indeed, how cAMP, a rapidly diffusing small molecule, is spatially compartmentalized in cells is not yet completely understood, especially given the relatively low catalytic efficiency of a single cAMP-producing AC and degrading PDE (Conti *et al.*, 2014; Lohse *et al.*, 2017; Bock *et al.*, 2020; Zhang *et al.*, 2020). Given that AKAP79/150 exists in nanoclusters at the plasma membrane in multiple cell types (Mo *et al.*, 2017; Zhang *et al.*, 2016) and associates with AC8 in β cells (Willoughby *et al.*, 2010), we hypothesized that AC8 could form nanoclusters on the plasma membrane of MIN6 cells and compartmentalize cAMP dynamics. To test this hypothesis, we examined the spatial organization of AC8 and AKAP150 at the membrane using Stochastic Optical Reconstruction Microscopy (STORM). We found that AKAP150 molecules were organized in clusters with a mean radius of 127 ± 9 nm and an average nearest-neighbor spacing of 313 ± 20 nm between cluster centers (n = 20) (Figure 3a and Figure 3—figure supplement 1), consistent with several recent reports demonstrating AKAP79/150's tendency to form nanoclusters in other cell types (Mo *et al.*, 2017; Purkey *et al.*, 2018; Tajada *et al.*, 2017; Zhang *et al.*, 2016). Thus, the AKAP79/150 compartment-specific cAMP phase is likely representative of the balanced cAMP generation and degradation within these AKAP clusters.

Due to the known interaction between AKAP79/150 and AC8 (Willoughby *et al.*, 2010) and diffusion of membrane-localized signaling complexes, we next probed the spatial organization and mobility of AC8. We found AC8 also distributes non-uniformly at the plasma membrane and forms clusters with a mean radius of 88 ± 8 nm and an average nearest-neighbor spacing of 292 ± 16 nm between cluster centers (n = 16) (Figure 3b; Figure 3—figure supplement 1). In order to measure the degree of colocalization between AKAP150 and AC8 nanoclusters, we also performed 2-color STORM and observed 72% of AKAP150 localizations were co-clustered with AC8 localizations, suggesting the presence of AKAP150:AC8 co-clustered nanodomains (Figure 3—figure supplement 2a–e). Next, to determine the mobility of AC8 molecules within the timescale of the oscillatory circuit's period, we performed Fluorescence Recovery After Photobleaching (FRAP) with EGFP-tagged AC8 and found AC8 diffuses slowly at the membrane, and that there exists a significant immobile fraction ($D_{AC8} = 0.019 \pm 0.002 \mu\text{m}^2/\text{s}$, avg. % immobile = 42.3%, n = 16) (Figure 3—figure supplement 3).

With the evidence of the nanoscale organization of AKAP150 and AC8 on the plasma membrane, we further hypothesized that the increased spatial density of Ca²⁺-driven cAMP sources within the AKAP150 clusters, in conjunction with dispersed PDE1 in the cytosol (Bender and Beavo, 2006; Goraya *et al.*, 2008), is important in compartmentalizing cAMP production and mediating the in-

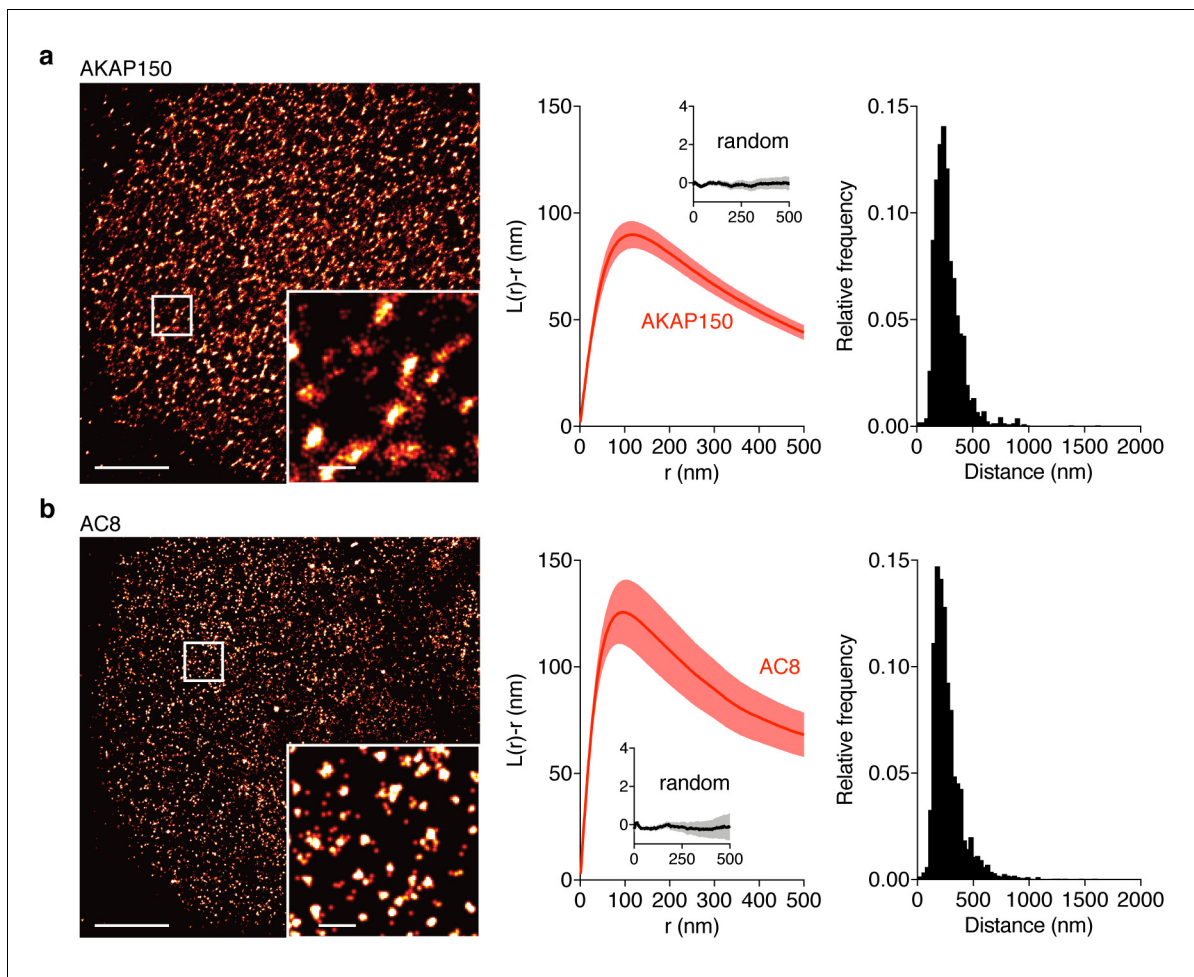


Figure 3. AKAP150 and AC8 both form nanoclusters at the surface of MIN6 β cells. (a) Representative super-resolution STORM image of the AKAP150 scaffold (scale 5 μm , inset 500 nm). Ripley-K analysis measures the average radii of the nanoclusters and indicates that AKAP150 forms clusters of 127 ± 9 nm, $n = 20$ (uniform random distribution control in inset). The nearest-neighbor distance distribution describes the distance between nanoclusters (average distance for AKAP150 is 313 ± 20 nm). (b) Representative super-resolution STORM image of Ca^{2+} -sensitive AC8 (scale 5 μm , inset 500 nm) depicts AC8 nanoclusters of average radius 88 ± 8 nm and average nearest-neighbor distance 292 ± 16 nm, $n = 16$.

The online version of this article includes the following figure supplement(s) for figure 3:

Figure supplement 1. Analysis of AKAP150 and AC8 cluster area.

Figure supplement 2. AKAP150 is co-clustered with AC8 at the plasma membrane in MIN6 cells.

Figure supplement 3. AC8 diffuses slowly at the plasma membrane.

phase cAMP signal. To test this idea, we sought to build a mathematical framework to describe the spatial compartmentalization of the in- and out-of-phase cAMP- Ca^{2+} oscillations. Briefly, we expanded our network motif model (Figure 2c) by including a 3D spatial component with cAMP diffusion ($D_{\text{cAMP}} = 60 \mu\text{m}^2/\text{s}$; Agarwal et al., 2016) and incorporating our previously published well-mixed β cell model (Ni et al., 2011). We used the AKAP79/150:AC8 cluster pattern measurements from the STORM imaging to set model parameters in a hexagonal prism domain (200 nm edge, 600 nm depth), with one immobile AKAP79/150:AC8 cluster centered in the domain for simulation (Figure 4a, see Appendix 1 for model development details). By localizing AC8 within the AKAP79/150:AC8 cluster on the plasma membrane face and leaving PDE1 well-mixed throughout the volume, we could simulate Ca^{2+} -driven cAMP oscillations that were in-phase within the immediate vicinity of a cluster, but sharply transitioned out-of-phase outside the cluster. Specifically, during a Ca^{2+} influx

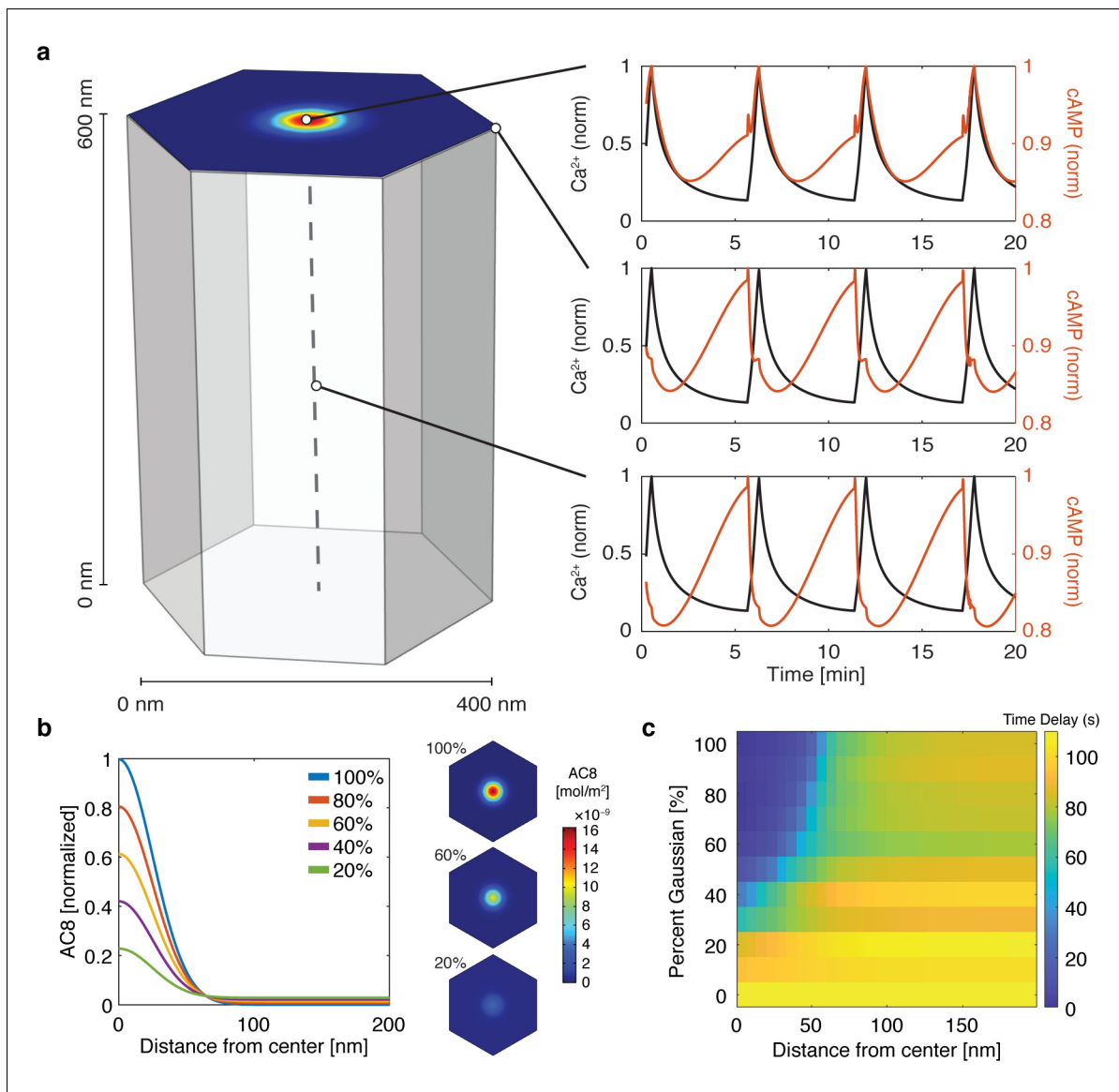


Figure 4. cAMP-Ca²⁺ phase relationship can be described by a 3D reaction-diffusion model involving clusters of AKAP79/150 and AC8. (a) 3D reaction-diffusion model with a single AKAP79/150:AC8 co-cluster positioned at the PM in the β cell in a hexagonal prism volume. cAMP oscillates in-phase immediately within the AKAP79/150:AC8 nanocluster due to the high effective concentration of AC8, but out-of-phase at the PM or cytosol due to the presence of PDE1 (cAMP – red, Ca²⁺ – blue). (b) Disruption of the AKAP79/150:AC8 interaction can redistribute AC8 from within the cluster to the PM, shown by the half-Gaussian cross-sections and representative AC8 concentration heatmaps at the PM. (c) Heatmap depicting the time lag (s) for AC8 distribution (% Gaussian) and spatial distance (nm) from cluster center along PM.

The online version of this article includes the following figure supplement(s) for figure 4:

Figure supplement 1. Increasing AC8 concentration within the cluster leads to loss of compartmentalized cAMP-calcium phase relationship.

event, Ca²⁺-triggered cAMP production dominated at the center of the AKAP79/150 cluster while Ca²⁺-triggered cAMP degradation was favored outside the cluster at the PM and in the center of the unit volume (**Figure 4a**). Not surprisingly, the regime that recapitulates this phase relationship is sensitive to the spatially-restricted AC8/PDE1 balance and the diffusivity of cAMP. For example, by increasing the AC8 concentration within the cluster, the Ca²⁺-driven cAMP generative flux could exceed the rate of cAMP degradation by PDE1 and thus cAMP and Ca²⁺ oscillations could exist in-phase within both compartments (**Figure 4—figure supplement 1**). Alternatively, assuming that AC8 clustering is driven by AKAP150:AC8 interactions, weakening this interaction would then reduce the AC8 cluster stabilization and lead to a redistribution of AC8 away from the nanoclusters and a

decrease in the local concentration of AC8 within the clusters (**Figure 4b**). Without the high local concentration of AC8 driving a net positive cAMP production within an AKAP79/150 cluster, the spatial domain where cAMP oscillates in-phase with Ca^{2+} is predicted to shrink while the out-of-phase regime expands and can reverse the phase at the cluster center (**Figure 4c**).

To test this prediction, we overexpressed the amino terminus of AC8 (AC8¹⁻¹⁰⁶) required for interaction with AKAP79/150 (*Willoughby et al., 2010*) to compete with the binding of endogenous AC8 to the endogenous AKAP150 scaffold. The disruption of the AKAP150:AC8 interaction was validated using a proximity ligation assay (PLA) to visualize the AKAP150:AC8 interaction in situ. Compared to non-transfected cells, cells expressing the AC8¹⁻¹⁰⁶ peptide had a $39 \pm 4\%$ reduction in the PLA signals, indicating a decrease in the AKAP150:AC8 interaction (**Figure 5—figure supplement 1a,b**). Furthermore, STORM imaging showed that overexpression of the AC8¹⁻¹⁰⁶ peptide led to a decrease in the percentage of AC8 single-molecule localizations within AC8 nanoclusters ($n = 9$) (**Figure 5a**), consistent with the predicted redistribution of AC8 molecules (**Figure 4b**). To test the impact of loss of AC8 molecules from the nanoclusters on the oscillation phase, we measured AKAP79/150-localized cAMP in the presence of AC8¹⁻¹⁰⁶ and observed a significant increase in the average lag time (43 ± 6 s, $n = 33$) (**Figure 5b**). This is due to a higher proportion of cells exhibiting out-of-phase cAMP oscillations, indicating that the AKAP79/150:AC8 competitor peptide was

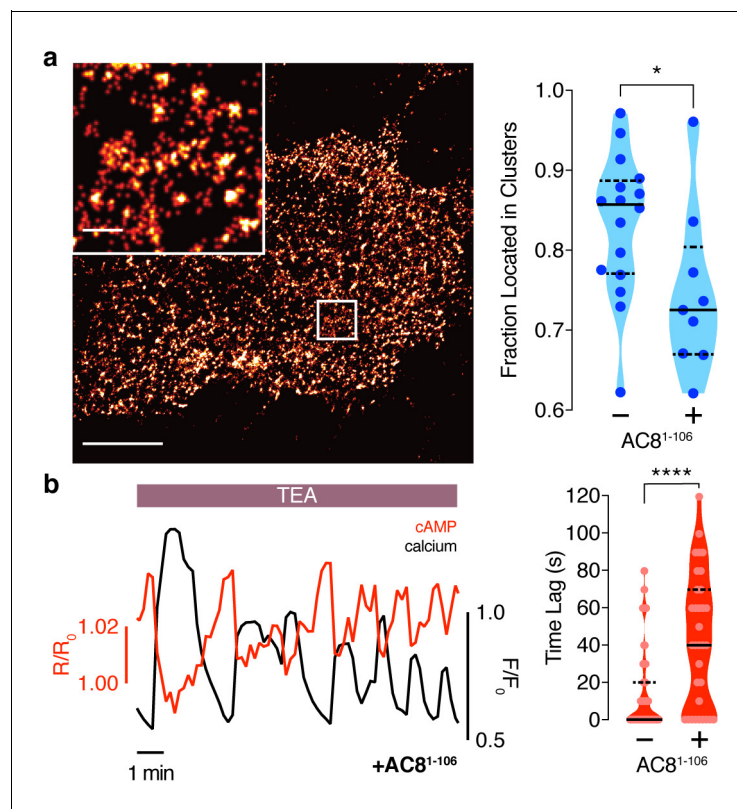


Figure 5. Disruption of the AKAP79/150:AC8 interaction is associated with a redistribution of AC8 at the PM and a phase shift of cAMP at the AKAP79/150 nanodomain. (a) Over-expression of the N-terminus of AC8, which is necessary and sufficient for mediating the AKAP79/150:AC8 interaction, redistributes AC8 from within nanoclusters to the general PM, as seen in the STORM image (scale 5 μm , inset 500 nm) and measured by the percent of localizations that fall into nanoclusters. (b) Disruption of the AKAP79/150:AC8 interaction lengthens the time lag between the cAMP (red) and Ca^{2+} (black) signals at the AKAP79/150 compartment (avg. time lag in absence of disruptor is 13 ± 3 s, $n = 60$, and in presence of disruptor 43 ± 6 s, $n = 33$) due to more cells displaying out-of-phase cAMP oscillations. * $p=0.0341$, **** $p<0.0001$; unpaired two-tailed Student's t-test. The online version of this article includes the following figure supplement(s) for figure 5:

Figure supplement 1. Expression of the N-terminus of AC8 perturbed the interaction between endogenous AKAP150 and AC8 in MIN6.

sufficient in reversing the phase relationship in the AKAP79/150 compartment. Interestingly, we also observed many cells displaying irregular Ca^{2+} oscillations, as indicated by a disruption in the periodic timing of individual cells' Ca^{2+} peaks (**Figure 5b**, left). This nanoscale perturbation establishes the regulatory role of the AKAP79/150:AC8 interaction in mediating the compartmentalized cAMP- Ca^{2+} phase relationship.

AKAP79/150-mediated phase relationship is critical for regulating oscillatory Ca^{2+}

Next we systematically examined the impact of perturbing the precisely regulated phase relationship within the AKAP79/150 compartment. Due to the modulatory role of PKA in the Ca^{2+} -cAMP-PKA oscillatory circuit and the interaction between PKA and AKAP79/150, we wondered how the in-phase cAMP oscillations with respect to Ca^{2+} are translated into PKA activities and if spatial compartmentalization of the phase relationship is also maintained at the PKA activity level. Therefore, we extended our 3D model to include AKAP79/150-associated PKA (see Appendix 1 for model details). In this extended model, PKA activity oscillations exhibit distinct phase relationships with respect to Ca^{2+} within and outside of the AKAP79/150 compartment (**Figure 6—figure supplement 1a**). To test this prediction, we fused our FRET-based biosensor for PKA activity (AKAR4) (**Depry et al., 2011**) to either full-length AKAP79 or the PM-targeting motif and expressed the sensors in MIN6 cells. Upon TEA stimulation, PKA activity was observed to oscillate with a lag time of 25 ± 6 s ($n = 15$) within the AKAP79/150 compartment but with a lag time of 55 ± 8 s ($n = 12$) (**Figure 6—figure supplement 1b–e**) at the general plasma membrane, indicating that the compartmentalized phase relationship is preserved from cAMP to PKA.

Spatiotemporal organization of PKA signaling and its phosphorylation targets via AKAPs have been implicated in regulating several important pathways. For example, PKA has been shown to phosphorylate $\text{Ca}_v1.2$ in an AKAP79/150-dependent manner, and this modification can influence the open probability of the channel (**Murphy et al., 2014**), suggesting a mechanistic link between local cAMP/PKA activity and global oscillatory Ca^{2+} . Thus, we sought to study the functional role of the spatially compartmentalized cAMP- Ca^{2+} phase relationship in regulating intracellular Ca^{2+} dynamics. We measured Ca^{2+} oscillations by RCaMP in the presence of either the EGFP-tagged AKAP79/150:AC8 disruptor peptide, AC8¹⁻¹⁰⁶, or EGFP alone as a control. Population-wide differences in Ca^{2+} dynamics, such as strength and timing, were observed in AC8¹⁻¹⁰⁶-transfected cells and visualized in heat maps depicting the normalized Ca^{2+} signal per cell versus time (**Figure 6a**). Interestingly, we found that the expression of the disruptor peptide was correlated with a significant decrease in the peak ratio between the second Ca^{2+} peak and the first Ca^{2+} peak (control average -1.6% , $n = 270$; AC8¹⁻¹⁰⁶ average -10.8% , $n = 562$) post TEA addition, indicative of less sustained oscillations (**Figure 6b,c**). In addition to intracellular Ca^{2+} concentration, the precise timing of internal oscillatory events is critical for modulating β cell functions such as glucose homeostasis and pulsatile insulin secretion (**Fridlyand et al., 2010**). In the presence of the disruptor peptide, cells also exhibited a longer elapsed time between oscillatory Ca^{2+} peaks (control average 3.9 ± 0.1 min, $n = 270$; AC8¹⁻¹⁰⁶ average 4.6 ± 0.1 min, $n = 562$), suggesting that the timing of the signaling circuit was disturbed (**Figure 6b,c**). It is well established that besides the precise timing, the regularity of cytoplasmic Ca^{2+} in β cells is crucial in mediating pulsatile insulin secretion from the pancreas (**Gilon et al., 2002**; **Schmitz et al., 2002**). By stratifying the disruptor peptide-expressing cell population into 'low,' 'medium,' and 'high' expressers and performing a blinded classification of responding cells based on the regularity of the Ca^{2+} oscillation (see Appendix 1 for details), we found a positive correlation between the percentage of cells exhibiting irregular oscillations and the expression level of the disruptor peptide (42% for low-expressing vs. 68% for high-expressing AC8¹⁻¹⁰⁶ disruptor) (**Figure 6d**). Taken together, these data signify that the compartmentalized cAMP- Ca^{2+} phase relationship regulates the oscillatory Ca^{2+} signal and plays an important role in determining the pace, regularity, and sustainability of the Ca^{2+} oscillations.

Discussion

Biological oscillations represent a rich way of encoding information using the amplitude and frequency. Here, we show the phase in an oscillatory signaling circuit represents a novel mode of informational encoding for which the phase itself can be spatiotemporally regulated. In the case of the

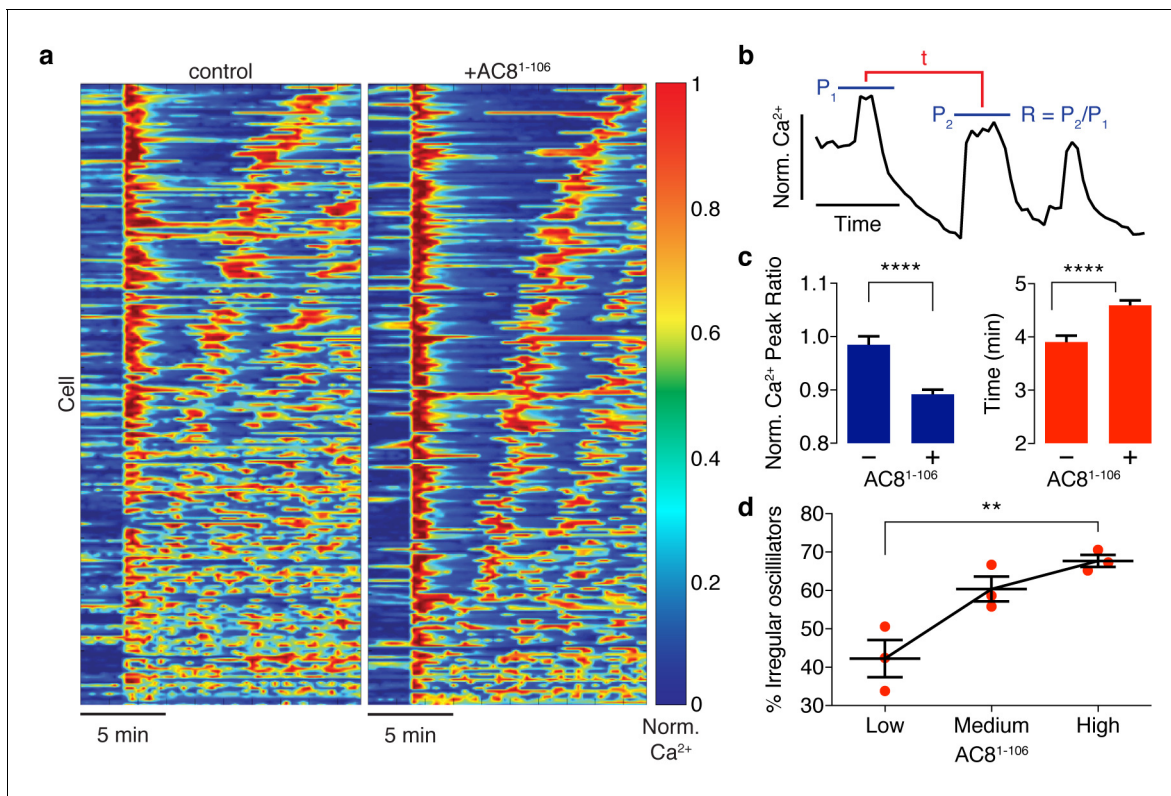


Figure 6. Ca^{2+} oscillatory dynamics are affected by expression of the disruptor peptide in β cells. (a) Heatmaps depicting Ca^{2+} oscillations for 220 randomly selected cells co-expressing EGFP alone (control, left) or EGFP-tagged AC8¹⁻¹⁰⁶ (AKAP79/150:AC8 disruptor, right), ordered by a mixed parameter describing the time lag between the first two Ca^{2+} peaks and the avg. timelag between all Ca^{2+} peaks. (b) Schematic describing two Ca^{2+} oscillatory parameters: the ratio between the first two Ca^{2+} peaks ($R = P_2 / P_1$) and the interpeak timing (t). (c) The peak ratio R is decreased in the presence of the AKAP79/150:AC8 disruptor (left), indicating less of a sustained Ca^{2+} oscillatory response. Over-expression of the disruptor also lengthens the timing between peaks (right). (d) The level of disruptor peptide expression is correlated with an increase in the percentage of cells exhibiting irregular oscillations (total $n = 562$). $p=0.0054$, ordinary one-way ANOVA.

The online version of this article includes the following figure supplement(s) for figure 6:

Figure supplement 1. The phase of oscillating PKA activity, relative to Ca^{2+} , is also spatially compartmentalized.

Figure supplement 2. Stochastic model results for the simplified model show the cAMP- Ca^{2+} phase relationship is preserved and noise is reduced in higher flux conditions.

Ca^{2+} -cAMP-PKA circuit, the oscillatory cAMP/PKA phase relative to a widespread Ca^{2+} signal is distinctly regulated within two adjacent membrane compartments through intracellular organization of scaffolds and signaling effectors. Localized perturbation of this spatial phase signature disrupts global Ca^{2+} oscillations and thus has far-reaching consequences on the functional landscape of the β cell.

Compartmentalization of cAMP/PKA signaling is instrumental in processing a diverse set of inputs and mediating specific cellular functions; however, the mechanistic details of compartmentalization await to be fully elucidated (Musheshe et al., 2018). Given the measured kinetic rates of most ACs and PDEs, the generation of local cAMP gradients around single enzymes appears unfeasible (Conti et al., 2014). Context-dependent discrepancies in some of the kinetics (i.e. differences between in vitro and in vivo measurements) and slower cAMP diffusion due to buffering have been shown to be important for cAMP compartmentalization (Bock et al., 2020; Zhang et al., 2020). Here, we propose the nanoscale organization of key cAMP effectors and regulators as a novel mechanism for cAMP compartmentation. Despite the slow rates measured for individual ACs, we computationally and experimentally describe conditions in which the generation of compartmentalized

cAMP can emerge from the clustering of many relatively immobile AC8 enzymes at the membrane and bulk distribution of PDE1 in the cytoplasm. Alterations to this nanoscale organization lead to dysregulated Ca^{2+} oscillations, demonstrating the functional importance of maintaining this organization. This system also serves as a nanoscale demonstration of how a cell can translate a global signal (Ca^{2+}) into a compartmentalized signal (cAMP/PKA activity) by local activation and global inhibition, a strategy that is likely utilized in many other cellular contexts (Levchenko et al., 2000; Purvis and Lahav, 2013).

In order to understand the functional impact of the nanoscale architecture, it is important to also consider the discrete scale of such signaling organization. According to our rough estimates, approximately 15–150 individual AC8 molecules comprise AKAP150:AC8 nanoclusters (see Materials and methods for STORM-based estimation). To investigate the role of small molecule numbers, we recast our previous network motif model as a stochastic system and simulated the impact of changing initial conditions of PDE1 and AC8. We found that even in these discrete simulations, the previously noted phase relationships are preserved. As the balance between PDE and AC is perturbed, the system moves from an in-phase to an out-of-phase cAMP response with respect to Ca^{2+} . Interestingly, we also noted that increasing the number of AC8 molecules leads to a reduction of the noise in the cAMP response. Thus, we predict that tuning AC8 cluster size might be a biological design strategy of nanoclusters to maintain accurate responses to perturbations (Figure 6—figure supplement 2a–d).

The interplay between Ca^{2+} and cAMP is very intricate, and multiple mechanisms could contribute to the observed dysregulated signaling effects upon perturbation of the AKAP79/150-compartmentalized cAMP- Ca^{2+} phase (Figure 6a–d). AKAPs can recruit PKA to regulate channel activities (Dell'Acqua et al., 2006; Mo et al., 2017; Torres-Quesada et al., 2017), such as in the regulation of voltage-mediated Ca^{2+} entry via PKA-dependent phosphorylation of $\text{Ca}_v1.2$ (Murphy et al., 2014) or the modulation of store-operated Ca^{2+} entry by both PKA-dependent STIM1 and Orai1 phosphorylation (Thompson and Shuttleworth, 2015; Zhang et al., 2019). Additional levels of regulatory feedback within the Ca^{2+} -cAMP-PKA oscillatory circuit have also been identified, such as a negative feedback loop involving PKA phosphorylation of AC8, thereby fine-tuning the circuit dynamics (Willoughby et al., 2012).

The precisely regulated Ca^{2+} and cAMP oscillations are likely functionally important as insulin secretion requires coordination between Ca^{2+} , cAMP, and PKA. Localized cAMP/PKA signaling at the AKAP79/150 scaffold and the in-phase oscillations of cAMP and Ca^{2+} within this compartment might play a critical role in regulating insulin secretion due to close interactions between AKAP79/150 and insulin secretory granules via $\text{Ca}_v1.2$ (Barg et al., 2001). Several important processes and components of the secretory machinery have been identified as targets of PKA signaling here, such as PKA-dependent mobilization of granules (Renström et al., 1997) and modulation of the synaptosomal protein SNAP25 (Gao et al., 2016). These PKA phosphorylation events may be highly coordinated with oscillations of Ca^{2+} , which drive the exocytosis process for pulsatile insulin secretion. In addition to PKA-dependent secretory control, cAMP has recently been implicated to play a direct role in fusion pore formation via the cAMP-regulated guanine exchange factor Epac (Guček et al., 2019). Compartmentalized phase regulation of the Ca^{2+} -cAMP-PKA oscillatory circuit at the AKAP79/150 macromolecular complex is likely involved in the regulation of many β cell processes, in addition to insulin secretion, and more work will be needed to further establish the mechanisms involved in decoding the information embedded in the local phase relationship.

The Ca^{2+} -cAMP-PKA oscillatory circuit in pancreatic β cells integrates many important regulators of cellular function, and the precise coordination of each is required for proper signaling control. Here, we have uncovered a spatiotemporal organization of the circuit where the oscillatory phase between cAMP/PKA and Ca^{2+} depends on the spatial proximity of the AKAP79/150 scaffold protein and AC8. The construction principles of this signaling nanodomain, including the spatial distributions of sinks and sources, likely represent a generalized strategy for the generation of other compartmentalized signals and provide a unique modality in which cells embed, process, and produce signaling information.

Materials and methods

Key resources table

Reagent type (species) or resource	Designation	Source or reference	Identifiers	Additional information
Cell line (<i>Mus musculus</i>)	MIN6	Dr. Jun-Ichi Miyazaki, Osaka University	RRID:CVCL_0431	
Chemical compound, drug	Tetraethylammonium chloride (TEA)	Sigma	T2265	20 mM
Chemical compound, drug	8-Methoxymethyl-3-isobutyl-1-methylxanthine (8MM-IBMX)	Sigma-Aldrich	M2547	100 μ M
Chemical compound, drug	Milrinone	Alexis	Cat# ALX-270-083 M005	10 μ M
Chemical compound, drug	Rolipram	Alexis	Cat# ALX-270-119	1 μ M
Chemical compound, Drug	KCl	Sigma-Aldrich	P9541	15 mM
Commercial assay or kit	Lipofectamine-2000	Invitrogen	11668019	
Recombinant DNA reagent	pCDNA3 AKAR4	PMID:20838685		
Recombinant DNA reagent	(Ci/Ce)Epac2-camps	Dr. Dermot Cooper, University of Cambridge		
Recombinant DNA reagent	AKAP79 (AKAP5, <i>Homo sapiens</i>)	Dr. John D. Scott, University of Washington		
Recombinant DNA reagent	AC8 (<i>Adcy8</i> , <i>Rattus norvegicus</i>)	Dr. Dermot Cooper, University of Cambridge		
Recombinant DNA reagent	<i>ShAdcy8</i> Plasmid	Dr. Jochen Lang, University of Bordeaux	<i>ShAdcy8</i> #2	
Recombinant DNA reagent	RCaMP	Dr. Loren Looger, Janelia Farms		
Recombinant DNA reagent	R-Flnca	Dr. Kazuki Horikawa, Tokushima University Graduate School		
Commercial assay or kit	Duolink in situ red starter kit	Sigma	DUO92101	
Commercial assay or kit	Duolink in situ Probemaker MINUS	Sigma	DUO92010	
Commercial assay or kit	Duolink in situ Probemaker PLUS	Sigma	DUO92009	
Antibody	Anti-AC8, rat polyclonal	Abcam	ab196686	1:2000
Antibody	Anti-AKAP150, rat polyclonal	Millipore Sigma	07-210	1:500
Antibody	Anti-AKAP79, mouse monoclonal	BD	610314	1:500
Antibody	Goat anti-rabbit AlexaFluor647	ThermoFisher Scientific	A21245	1:1000
Antibody	Goat anti-mouse AlexaFluor568	ThermoFisher Scientific	A11031	1:1000
Software, algorithm	FIJI	https://imagej.net/Fiji	RRID:SCR_014294	
Software, algorithm	MetaFluor	https://www.moleculardevices.com/	RRID:SCR_002285	
Software, algorithm	MATLAB	https://www.mathworks.com/	RRID:SCR_001622	

Continued on next page

Continued

Reagent type (species) or resource	Designation	Source or reference	Identifiers	Additional information
Software, algorithm	GraphPad Prism	https://www.graphpad.com/scientific-software/prism/	RRID:SCR_002798	
Software, algorithm	COPASI	http://copasi.org/ <i>Hoops et al., 2006</i>	RRID:SCR_014260	
Software, algorithm	Virtual Cell	https://vcell.org/ <i>Cowan et al., 2012</i>	RRID:SCR_007421	

Gene construction

For AKAP79-(Ci/Ce)Epac2-camps, AKAP79 (gene AKAP5, from Dr. John D. Scott) was PCR amplified to have HindIII/BamHI digestion sites, and (Ci/Ce)Epac2-camps (from Dr. Dermot Cooper) was PCR amplified to have BamHI/EcoRI digestions sites. Both fragments were inserted into a pcDNA3 (Invitrogen) backbone for mammalian expression (cAMP sensor is C-terminal to AKAP79). For AKAP79-AKAR4, a similar approach was taken where AKAR4 was dropped between BamHI/EcoRI. For AC8 (gene *Adcy8*, from Dr. D. Cooper), AC8¹⁻¹⁰⁸, Gibson Assembly was used to insert the genes into the pcDNA3 mammalian expression vector. The *ShAdcy8* construct for *Adcy8* knockdown was previously verified and a gift from Dr. Jochen Lang. RCaMP was a gift from Dr. Loren Looger.

Cell culture

MIN6 cells (a mouse insulinoma β cell line, gift from Dr. Jun-Ichi Miyazaki) were plated onto sterilized glass coverslips in 35 mm dishes and grown to 50–90% confluency in DMEM (10% FBS, 4.5 g/L glucose) at 37°C with 5% CO₂. Identity was verified by phenotype (Ca²⁺ oscillations, morphology, and insulin secretion). Recurrent mycoplasma testing was performed and results were negative. Cells were transfected using Lipofectamine 2000 (Invitrogen) for 20–48 hr before imaging.

Imaging

Cells were washed twice with Hank's balanced salt solution buffer and maintained in the dark at room temperature. Cells were imaged on a Zeiss Axiovert 200M microscope with a cooled charge-coupled device camera (MicroMAX BFT512, Roper Scientific, Trenton, NJ) controlled by META-FLUOR 6.2 software (Universal Imaging, Downingtown, PA). Dual cyan/yellow emission from FRET used a 420DF20 excitation filter, a 450DRLP dichroic mirror, and two emission filters [475DF40 for CFP and 535DF25 for YFP]. RFP fluorescence was imaged using a 568D55 excitation filter, a 600DRLP dichroic mirror, and a 653DF95 emission filter. GFP fluorescence was imaged using a 480DF30 excitation filter, a 505DRLP dichroic mirror, and a 535DF45 emission filter. YFP fluorescence was imaged using a 495DF40 excitation filter, a 515DRLP dichroic mirror, and a 535DF25 emission filter. These filters were alternated by a filter-changer Lambda 10–2 (Sutter Instruments, Novato, CA). Exposure time was 50–500 ms, and images were taken every 10–30 s.

For confocal imaging, images were collected with a C2 plus on a Nikon Ti2 inverted microscope equipped with a Plan Apo lambda 60x oil immersion objective NA 1.4. YFP fluorescence was excited with the 488 nm line from a LU-N4 laser. Images were acquired with a DUVB detector collecting emission from 495 nm to 600 nm with a virtual spectral GaAsP detector controlled by NIS Elements software. The pinhole was set at 30 μ m. Frame size was 1024 \times 1024 pix.

For FRAP acquisition, cells were imaged using a C2 plus mounted on a Nikon Ti2 with a 488 nm laser (LU-N4 laser engine, Nikon Instruments) and sensitivity PMT detector (C2-DU3, Nikon) with 525/50 nm bandpass filter. The excitation light is reflected by a dichroic mirror 405/488/561/640 and focused through an Apo 100 \times 1.49 NA objective. Image stacks were acquired in Galvano mode with unidirectional scanning with a 488 nm laser at 1.5% laser power with frame size 512 \times 512 at scan zoom 2, one frame per second and 97.1 μ m pinhole size. Small stimulation ROIs were drawn at the plasma membrane. The total FRAP series contained three images before bleaching (obtained with 2 s intervals), two cycles of ROI bleaching with the 488 nm laser at 100% laser power (5 frames at one frame per second), and two minutes of continuous acquisition to monitor fluorescence recovery.

Image analysis

Fluorescence images were background-corrected by subtracting the fluorescence intensity of background with no cells from the emission intensities of cells expressing fluorescent reporters. Cells for experiments using the targeted biosensors were manually segmented from microscopy images based on emission intensity (YFP) and RCaMP (RFP) using custom-written Java and MATLAB scripts and whole-cell fluorescence emission was measured. The ratio of yellow/cyan emission (AKAR4) or cyan/yellow emission (Epac2-camps) and RFP intensity were then calculated at different time points using MATLAB scripts. The values of all-time courses were normalized by dividing each by the average basal value before drug addition. FRAP measurements were background-subtracted, bleach-corrected, and normalized, and fit to a previously described diffusion-dominant model (Ellenberg *et al.*, 1997; Phair *et al.*, 2004). For the AKAP150:AC8 disruption experiments, cells were segmented with custom CellProfiler (Broad Institute) pipelines based on RCaMP (RFP) fluorescence emission, and both RFP and GFP fluorescence intensities (EGFP-AC8¹⁻¹⁰⁶) per cell were measured every 30 s. Graphpad Prism eight was used for visualization and statistical analysis. Custom-written MATLAB scripts were used for correlation analysis and regularity classification.

Super-resolution imaging (STORM)

For fixed-cell stochastic optical reconstruction microscopy (STORM) imaging, cells were fixed with 4% paraformaldehyde (PFA) and 0.2% glutaraldehyde (GA) for 20 min and then washed with 100 mM glycine in HBSS to quench the free PFA. Cells were permeabilized and blocked in a permeabilization solution with 0.1% Triton X-100, 0.2% bovine serum albumin, 5% goat serum, and 0.01% sodium azide in HBSS. The cells were then incubated overnight at 4°C with an anti-AC8 antibody (Abcam, ab196686) at a 1:2000 dilution or an anti-AKAP150 (Millipore Sigma, 07–210) antibody at a 1:500 dilution, followed by 1 to 2 hr with goat anti-rabbit Alexa 647-conjugated antibody (ThermoFisher Scientific, A21245) at 1:1000 dilution. For the 2-color STORM experiments, cells were incubated with both the anti-AC8 antibody (1:2000 dilution) and an anti-AKAP79 antibody that recognizes a conserved epitope in AKAP150 (BD, 610314; raised against the C-terminal 248 residues of AKAP79 which shares 70% similarity with a region in AKAP150; 1:500 dilution), followed by a 2 hr incubation with a goat anti-rabbit Alexa 647-conjugated antibody (1:1000 dilution) and a goat anti-mouse Alexa 568-conjugated antibody (ThermoFisher Scientific, A11031; 1:1000 dilution). The cells were then post-fixed again in 4% PFA and 0.2% GA, quenched with 100 mM glycine in HBSS, and washed with HBSS to prepare for imaging. Immediately before imaging, the medium was changed to STORM-compatible buffer (50 mM Tris-HCl, pH 8.0, 10 mM NaCl, and 10% glucose) with glucose oxidase (560 µg/ml), catalase (170 µg/ml), and mercapto-ethylamide (7.7 mg/ml). STORM images were obtained using a Nikon Ti total internal reflection fluorescence (TIRF) microscope with N-STORM, an Andor IXON3 Ultra DU897 EMCCD, and a 100 × oil immersion TIRF objective. Photo-activation was driven by a Coherent 405 nm laser, while excitation was driven with a Coherent 647 nm laser or Coherent 561 nm laser.

All image analysis and image reconstruction were performed using both Nikon Elements analysis software and custom-written MATLAB scripts. Blinking correction was performed by implementing the pairwise Distance Distribution Correction (DDC) algorithm (Bohrer *et al.*, 2019). Cluster property measurements were performed using Ripley-K analysis and custom mean-shift MATLAB code for segmentation, as described before (Mo *et al.*, 2017). Co-clustering measurements were made using custom MATLAB scripts implementing Getis-Franklin pattern analysis, as described previously (Getis and Franklin, 1987; Mo *et al.*, 2017). Briefly, we first calculated the degree of local clustering of AKAP150 molecules using the $L(r)$ spatial statistic at $r = 200$ nm which counts the number of AKAP150 localizations within 200 nm (length scale of nanoclusters) of each AKAP150 localization, normalized appropriately. We then calculated $L_{\text{cross}}(r)$ at $r = 200$ nm which counts the number of AC8 localizations within 200 nm of each AKAP150 localization, normalized appropriately. Plots of $L_{\text{cross}}(200)$ vs. $L(200)$ were generated and an L threshold of 150 was chosen based on the proportion of localizations found within clusters from the mean-shift segmentation analysis, and used to divide the plot into quadrants to calculate the proportion of AKAP150 localizations co-clustered with AC8 as previously described (Mo *et al.*, 2017).

We obtained a very rough estimate of AC8 molecules within nanoclusters from our blink-corrected STORM datasets by assuming background localizations outside the cell are due to single

secondary antibodies with conjugated dyes. We measured an average of 2 localizations per secondary antibody outside the cell and approximately 50 localizations per AC8 nanocluster within the cell. Estimating a labeling stoichiometry of 0.4–1.5 secondary antibodies per primary antibody and 0.4–1.5 primary antibodies per AC8 molecule (Zanacchi *et al.*, 2017; Nieuwenhuizen *et al.*, 2015), we can roughly approximate the number of AC8 molecules per nanocluster to be between 15 and 150 molecules/cluster (N = 3 cells).

Proximity ligation assay

Antibodies for AC8 and AKAP150, mentioned in STORM section, were buffer exchanged into DPBS and conjugated with MINUS or PLUS oligos, following the Sigma DuoLink in situ Probemaker kits. PLA experiments were performed using the Duolink in situ red kit for PLAs according to the provided protocol. The only protocol modification was to extend the amplification time by 50 min. Briefly, cells were fixed and permeabilized as in the STORM experiments before incubation with PLUS and MINUS oligo-conjugated primary antibodies for 30 min at 37°C each, with washes after each step. Ligation of the nucleotides and amplification of the strand occurred sequentially by incubating cells with first ligase then polymerase and detection solution. PLA experiments with AKAP95 antibodies from different species were used as positive controls in HEK293T cells, and experiments with just one oligo-labeled primary antibody or the other were our negative control. Images were acquired on a Nikon Ti Eclipse epifluorescence scope with z-control and maximum intensity projections were created. A cross section of the DAPI-stained nucleus (3.6–5 µm) was also acquired and the number of dots per cell was counted using the nucleus as reference.

Statistical analysis

Statistics, such as means, SEMs, and comparisons were calculated using Graphpad Prism 8 software. Experiments comparing multiple conditions were analyzed using one-way ANOVA or unpaired t-tests. Statistical significance was assessed using $p < 0.05$ as a cutoff. Experiments were repeated >3 times. Individual cells with high expression of the AKAP79/150-fused biosensors were removed from analysis (see Appendix 1 for details).

Acknowledgements

We thank Dr. John D Scott for providing AKAP79, Dr. Dermot Cooper for providing (Ci/Ce)Epac2-camps and AC8, Dr. Loren Looger for providing RCaMP, Dr. Kazuki Horikawa for providing R-FlixA and Dr. Jochen Lang for providing the shAC8 construct. We thank Dr. Susan Taylor for critical reading of the manuscript. We also thank the members of the Nikon Imaging Center at UCSD for help with fluorescence microscopy experiments, and the Neuroscience Imaging Center at the Moore's Cancer Center for help with the STORM acquisition and analysis. This work was supported by NIH R01 DK073368 and R35 CA197622 (to JZ), DOD AFOSR FA9550-18-1-0051 (to PR and JZ), ONR N00014-17-1-2628 (to PR), NIH R01 GM086447 and NSF MCB 1817551 (to JX), NIH T32GM007231 (to CHB), Johns Hopkins Discovery Award (to JX and JZ) and Hamilton Innovation Research Award (to JX).

Additional information

Competing interests

Jie Xiao: Reviewing editor, *eLife*. The other authors declare that no competing interests exist.

Funding

Funder	Grant reference number	Author
National Institutes of Health	R01 DK073368	Jin Zhang
U.S. Department of Defense	DOD AFOSR FA9550-18-1-0051	Padmini Rangamani Jin Zhang
Office of Naval Research	ONR N00014-17-1-2628	Padmini Rangamani

National Institutes of Health	R35 CA197622	Jin Zhang
National Institutes of Health	5T32 GM007231	Christopher H Bohrer
National Institutes of Health	R01 GM086447	Jie Xiao
National Science Foundation	MCB 1817551	Jie Xiao
Johns Hopkins University	Johns Hopkins Discovery Award	Jie Xiao Jin Zhang
Johns Hopkins University	Hamilton Innovation Research Award	Jie Xiao

The funders had no role in study design, data collection and interpretation, or the decision to submit the work for publication.

Author contributions

Brian Tenner, Conceptualization, Resources, Data curation, Formal analysis, Supervision, Validation, Investigation, Methodology, Writing - original draft, Project administration, Writing - review and editing; Michael Getz, Software, Formal analysis, Validation, Visualization, Writing - review and editing; Brian Ross, Data curation, Software, Investigation, Visualization, Methodology, Writing - review and editing; Donya Ohadi, Data curation, Software, Formal analysis, Validation, Writing - review and editing; Christopher H Bohrer, Data curation, Software, Formal analysis, Methodology, Writing - review and editing; Eric Greenwald, Conceptualization, Data curation, Software, Formal analysis, Writing - review and editing; Sohum Mehta, Conceptualization, Resources, Supervision, Investigation, Visualization, Project administration, Writing - review and editing; Jie Xiao, Project administration, Writing - review and editing; Padmini Rangamani, Conceptualization, Supervision, Investigation, Project administration, Writing - review and editing; Jin Zhang, Conceptualization, Supervision, Funding acquisition, Project administration, Writing - review and editing

Author ORCIDs

Michael Getz  <https://orcid.org/0000-0001-9886-8454>

Brian Ross  <http://orcid.org/0000-0001-9020-627X>

Sohum Mehta  <https://orcid.org/0000-0003-4764-8579>

Jie Xiao  <http://orcid.org/0000-0003-1433-5437>

Padmini Rangamani  <https://orcid.org/0000-0001-5953-4347>

Jin Zhang  <https://orcid.org/0000-0001-7145-7823>

Decision letter and Author response

Decision letter <https://doi.org/10.7554/eLife.55013.sa1>

Author response <https://doi.org/10.7554/eLife.55013.sa2>

Additional files

Supplementary files

- Transparent reporting form

Data availability

Data has been deposited at Dryad (<https://doi.org/10.6075/J0NP22TK>). Analysis scripts have been deposited on GitHub (<https://github.com/btenner/calcium-cAMP-PKA>; copy archived at <https://archive.softwareheritage.org/swh:1:rev:5c4c971e275cdc3e97b891e4b507393b209f80a1/>).

The following dataset was generated:

Author(s)	Year	Dataset title	Dataset URL	Database and Identifier
Tenner B	2020	Spatially compartmentalized phase regulation of a Ca ²⁺ -cAMP-PKA oscillatory circuit	https://doi.org/10.6075/J0NP22TK	Dryad Digital Repository, 10.6075/J0NP22TK

References

- Agarwal SR**, Clancy CE, Harvey RD. 2016. Mechanisms restricting diffusion of intracellular cAMP. *Scientific Reports* **6**:19577. DOI: <https://doi.org/10.1038/srep19577>, PMID: 26795432
- Akerboom J**, Carreras Calderón N, Tian L, Wabnig S, Prigge M, Tolö J, Gordus A, Orger MB, Severi KE, Macklin JJ, Patel R, Pulver SR, Wardill TJ, Fischer E, Schüler C, Chen TW, Sarkisyan KS, Marvin JS, Bargmann CI, Kim DS, et al. 2013. Genetically encoded calcium indicators for multi-color neural activity imaging and combination with optogenetics. *Frontiers in Molecular Neuroscience* **6**:2. DOI: <https://doi.org/10.3389/fnmol.2013.00002>, PMID: 23459413
- Ang KL**, Antoni FA. 2002. Reciprocal regulation of calcium dependent and calcium independent cyclic AMP hydrolysis by protein phosphorylation. *Journal of Neurochemistry* **81**:422–433. DOI: <https://doi.org/10.1046/j.1471-4159.2002.00903.x>, PMID: 12065651
- Barg S**, Ma X, Eliasson L, Galvanovskis J, Göpel SO, Obermüller S, Platzer J, Renström E, Trus M, Atlas D, Striessnig J, Rorsman P. 2001. Fast exocytosis with few Ca^{2+} channels in insulin-secreting mouse pancreatic B cells. *Biophysical Journal* **81**:3308–3323. DOI: [https://doi.org/10.1016/S0006-3495\(01\)75964-4](https://doi.org/10.1016/S0006-3495(01)75964-4), PMID: 11720994
- Beene DL**, Scott JD. 2007. A-kinase anchoring proteins take shape. *Current Opinion in Cell Biology* **19**:192–198. DOI: <https://doi.org/10.1016/j.ceb.2007.02.011>, PMID: 17317140
- Bender AT**, Beavo JA. 2006. Cyclic nucleotide phosphodiesterases: molecular regulation to clinical use. *Pharmacological Reviews* **58**:488–520. DOI: <https://doi.org/10.1124/pr.58.3.5>, PMID: 16968949
- Berridge MJ**, Bootman MD, Lipp P. 1998. Calcium—a life and death signal. *Nature* **395**:645–648. DOI: <https://doi.org/10.1038/27094>, PMID: 9790183
- Berry H**. 2002. Monte carlo simulations of enzyme reactions in two dimensions: fractal kinetics and spatial segregation. *Biophysical Journal* **83**:1891–1901. DOI: [https://doi.org/10.1016/S0006-3495\(02\)73953-2](https://doi.org/10.1016/S0006-3495(02)73953-2)
- Bock A**, Annibale P, Konrad C, Hannawacker A, Anton SE, Maiellaro I, Zabel U, Sivaramakrishnan S, Falcke M, Lohse MJ. 2020. Optical mapping of cAMP signaling at the nanometer scale. *Cell* **182**:1519–1530. DOI: <https://doi.org/10.1016/j.cell.2020.07.035>, PMID: 32846156
- Bohrer CH**, Yang X, Weng X, Tenner B, Ross B, Mcquillen R, Zhang J, Roberts E, Xiao J. 2019. A pairwise distance distribution correction (DDC) algorithm for blinking-free super-resolution microscopy. *bioRxiv*. DOI: <https://doi.org/10.1101/768051>
- Boras BW**, Kornev A, Taylor SS, McCulloch AD. 2014. Using Markov state models to develop a mechanistic understanding of protein kinase A regulatory subunit α activation in response to cAMP binding. *Journal of Biological Chemistry* **289**:30040–30051. DOI: <https://doi.org/10.1074/jbc.M114.568907>, PMID: 25202018
- Calebiro D**, Maiellaro I. 2014. cAMP signaling microdomains and their observation by optical methods. *Frontiers in Cellular Neuroscience* **8**:350. DOI: <https://doi.org/10.3389/fncel.2014.00350>, PMID: 25389388
- Clapham DE**. 2007. Calcium signaling. *Cell* **131**:1047–1058. DOI: <https://doi.org/10.1016/j.cell.2007.11.028>, PMID: 18083096
- Conti M**, Mika D, Richter W. 2014. Cyclic AMP compartments and signaling specificity: role of cyclic nucleotide phosphodiesterases. *Journal of General Physiology* **143**:29–38. DOI: <https://doi.org/10.1085/jgp.201311083>, PMID: 24378905
- Cooper DM**, Mons N, Karpen JW. 1995. Adenylyl cyclases and the interaction between calcium and cAMP signalling. *Nature* **374**:421–424. DOI: <https://doi.org/10.1038/374421a0>, PMID: 7700350
- Cowan AE**, Moraru II, Schaff JC, Slepchenko BM, Loew LM. 2012. Spatial modeling of cell signaling networks. *Methods in Cell Biology* **110**:195–221. DOI: <https://doi.org/10.1016/B978-0-12-388403-9.00008-4>, PMID: 22482950
- De Pittà M**, Volman V, Levine H, Pioggia G, De Rossi D, Ben-Jacob E. 2008. Coexistence of amplitude and frequency modulations in intracellular calcium dynamics. *Physical Review E* **77**:030903. DOI: <https://doi.org/10.1103/PhysRevE.77.030903>, PMID: 18517322
- Defer N**, Best-Belpomme M, Hanoune J. 2000. Tissue specificity and physiological relevance of various isoforms of adenylyl cyclase. *American Journal of Physiology-Renal Physiology* **279**:F400–F416. DOI: <https://doi.org/10.1152/ajprenal.2000.279.3.F400>, PMID: 10966920
- Dell'Acqua ML**, Smith KE, Gorski JA, Horne EA, Gibson ES, Gomez LL. 2006. Regulation of neuronal PKA signaling through AKAP targeting dynamics. *European Journal of Cell Biology* **85**:627–633. DOI: <https://doi.org/10.1016/j.ejcb.2006.01.010>, PMID: 16504338
- Depry C**, Allen MD, Zhang J. 2011. Visualization of PKA activity in plasma membrane microdomains. *Mol. BioSyst.* **7**:52–58. DOI: <https://doi.org/10.1039/C0MB00079E>, PMID: 20838685
- Donahue BS**, Abercrombie RF. 1987. Free diffusion coefficient of ionic calcium in cytoplasm. *Cell Calcium* **8**:437–448. DOI: [https://doi.org/10.1016/0143-4160\(87\)90027-3](https://doi.org/10.1016/0143-4160(87)90027-3), PMID: 3435913
- Dou H**, Wang C, Wu X, Yao L, Zhang X, Teng S, Xu H, Liu B, Wu Q, Zhang Q, Hu M, Wang Y, Wang L, Wu Y, Shang S, Kang X, Zheng L, Zhang J, Raoux M, Lang J, et al. 2015. Calcium influx activates adenylyl cyclase 8 for sustained insulin secretion in rat pancreatic beta cells. *Diabetologia* **58**:324–333. DOI: <https://doi.org/10.1007/s00125-014-3437-z>, PMID: 25381556
- Dupont G**, Combettes L, Bird GS, Putney JW. 2011. Calcium oscillations. *Cold Spring Harbor Perspectives in Biology* **3**:a004226. DOI: <https://doi.org/10.1101/cshperspect.a004226>, PMID: 21421924
- Dyachok O**, Isakov Y, Sâgetorp J, Tengholm A. 2006. Oscillations of cyclic AMP in hormone-stimulated insulin-secreting beta-cells. *Nature* **439**:349–352. DOI: <https://doi.org/10.1038/nature04410>, PMID: 16421574

- Ellenberg J, Siggia ED, Moreira JE, Smith CL, Presley JF, Worman HJ, Lippincott-Schwartz J. 1997. Nuclear membrane dynamics and reassembly in living cells: targeting of an inner nuclear membrane protein in interphase and mitosis. *Journal of Cell Biology* **138**:1193–1206. DOI: <https://doi.org/10.1083/jcb.138.6.1193>, PMID: 9298976
- Everett KL, Cooper DM. 2013. An improved targeted cAMP sensor to study the regulation of adenylyl cyclase 8 by Ca²⁺ entry through voltage-gated channels. *PLOS ONE* **8**:e75942. DOI: <https://doi.org/10.1371/journal.pone.0075942>, PMID: 24086669
- Fridlyand LE, Tamarina N, Philipson LH. 2003. Modeling of Ca²⁺ flux in pancreatic beta-cells: role of the plasma membrane and intracellular stores. *American Journal of Physiology. Endocrinology and Metabolism* **285**:E138–E154.
- Fridlyand LE, Harbeck MC, Roe MW, Philipson LH. 2007. Regulation of cAMP dynamics by Ca²⁺ and G protein-coupled receptors in the pancreatic beta-cell: a computational approach. *American Journal of Physiology-Cell Physiology* **293**:C1924–C1933. DOI: <https://doi.org/10.1152/ajpcell.00555.2006>, PMID: 17928534
- Fridlyand LE, Tamarina N, Philipson LH. 2010. Bursting and calcium oscillations in pancreatic beta-cells: specific pacemakers for specific mechanisms. *American Journal of Physiology-Endocrinology and Metabolism* **299**:E517–E532. DOI: <https://doi.org/10.1152/ajpendo.00177.2010>, PMID: 20628025
- Fridlyand LE, Philipson LH. 2016. Pancreatic beta cell G-Protein coupled receptors and second messenger interactions: a systems biology computational analysis. *PLOS ONE* **11**:e0152869. DOI: <https://doi.org/10.1371/journal.pone.0152869>, PMID: 27138453
- Gao S, Wang HY, Malbon CC. 2011. AKAP12 and AKAP5 form higher-order hetero-oligomers. *Journal of Molecular Signaling* **6**:8. DOI: <https://doi.org/10.1186/1750-2187-6-8>, PMID: 21831305
- Gao J, Hirata M, Mizokami A, Zhao J, Takahashi I, Takeuchi H, Hirata M. 2016. Differential role of SNAP-25 phosphorylation by protein kinases A and C in the regulation of SNARE complex formation and exocytosis in PC12 cells. *Cellular Signalling* **28**:425–437. DOI: <https://doi.org/10.1016/j.cellsig.2015.12.014>, PMID: 26721188
- Getis A, Franklin J. 1987. Second-Order neighborhood analysis of mapped point patterns. *Ecology* **68**:473–477. DOI: <https://doi.org/10.2307/1938452>
- Gilon P, Ravier MA, Jonas JC, Henquin JC. 2002. Control mechanisms of the oscillations of insulin secretion in vitro and in vivo. *Diabetes* **51 Suppl 1**:S144–S151. DOI: <https://doi.org/10.2337/diabetes.51.2007.S144>, PMID: 11815474
- Gold MG, Stengel F, Nygren PJ, Weisbrod CR, Bruce JE, Robinson CV, Barford D, Scott JD. 2011. Architecture and dynamics of an A-kinase anchoring protein 79 (AKAP79) signaling complex. *PNAS* **108**:6426–6431. DOI: <https://doi.org/10.1073/pnas.1014400108>, PMID: 21464287
- Goraya TA, Masada N, Ciruela A, Willoughby D, Clynes MA, Cooper DM. 2008. Kinetic properties of Ca²⁺/calmodulin-dependent phosphodiesterase isoforms dictate intracellular cAMP dynamics in response to elevation of cytosolic Ca²⁺. *Cellular Signalling* **20**:359–374. DOI: <https://doi.org/10.1016/j.cellsig.2007.10.024>, PMID: 18335582
- Greenwald EC, Saucerman JJ. 2011. Bigger, better, faster: principles and models of AKAP anchoring protein signaling. *Journal of Cardiovascular Pharmacology* **58**:462–469. DOI: <https://doi.org/10.1097/FJC.0b013e31822001e3>, PMID: 21562426
- Guček A, Gandasi NR, Omar-Hmeadi M, Bakke M, Døskeland SO, Tengholm A, Barg S. 2019. Fusion pore regulation by cAMP/Epac2 controls cargo release during insulin exocytosis. *eLife* **8**:e41711. DOI: <https://doi.org/10.7554/eLife.41711>, PMID: 31099751
- Guldberg CM, Waage P. 1879. Ueber die chemische affinität. § 1. einleitung. *Journal Für Praktische Chemie* **19**:69–114. DOI: <https://doi.org/10.1002/prac.18790190111>
- Han P, Werber J, Surana M, Fleischer N, Michaeli T. 1999. The calcium/calmodulin-dependent phosphodiesterase PDE1C down-regulates glucose-induced insulin secretion. *Journal of Biological Chemistry* **274**:22337–22344. DOI: <https://doi.org/10.1074/jbc.274.32.22337>, PMID: 10428803
- Haselwandter CA, Kardar M, Triller A, da Silveira RA. 2015. Self-assembly and plasticity of synaptic domains through a reaction-diffusion mechanism. *Physical Review E* **92**:032705. DOI: <https://doi.org/10.1103/PhysRevE.92.032705>
- Hinke SA, Navedo MF, Ulman A, Whiting JL, Nygren PJ, Tian G, Jimenez-Caliani AJ, Langeberg LK, Cirulli V, Tengholm A, Dell'Acqua ML, Santana LF, Scott JD. 2012. Anchored phosphatases modulate glucose homeostasis. *The EMBO Journal* **31**:3991–4004. DOI: <https://doi.org/10.1038/emboj.2012.244>, PMID: 22940692
- Hoops S, Sahle S, Gauges R, Lee C, Pahle J, Simus N, Singhal M, Xu L, Mendes P, Kummer U. 2006. COPASI—a CComplex PATHway Simulator. *Bioinformatics* **22**:3067–3074. DOI: <https://doi.org/10.1093/bioinformatics/btl485>, PMID: 17032683
- Hoshi N, Langeberg LK, Scott JD. 2005. Distinct enzyme combinations in AKAP signalling complexes permit functional diversity. *Nature Cell Biology* **7**:1066–1073. DOI: <https://doi.org/10.1038/ncb1315>, PMID: 16228013
- Lai M, Brun D, Edelstein SJ, Le Novère N. 2015. Modulation of calmodulin lobes by different targets: an allosteric model with hemiconcerted conformational transitions. *PLOS Computational Biology* **11**:e1004063. DOI: <https://doi.org/10.1371/journal.pcbi.1004063>, PMID: 25611683
- Landa LR, Harbeck M, Kaihara K, Chepurny O, Kitiphongspattana K, Graf O, Nikolaev VO, Lohse MJ, Holz GG, Roe MW. 2005. Interplay of Ca²⁺ and cAMP signaling in the insulin-secreting MIN6 beta-cell line. *The Journal of Biological Chemistry* **280**:31294–31302. DOI: <https://doi.org/10.1074/jbc.M505657200>, PMID: 15987680

- Levchenko A**, Bruck J, Sternberg PW. 2000. Scaffold proteins may biphasically affect the levels of mitogen-activated protein kinase signaling and reduce its threshold properties. *PNAS* **97**:5818–5823. DOI: <https://doi.org/10.1073/pnas.97.11.5818>, PMID: 10823939
- Lohse C**, Bock A, Maiellaro I, Hannawacker A, Schad LR, Lohse MJ, Bauer WR. 2017. Experimental and mathematical analysis of cAMP nanodomains. *PLOS ONE* **12**:e0174856. DOI: <https://doi.org/10.1371/journal.pone.0174856>, PMID: 28406920
- Masada N**, Ciruela A, Maccougall DA, Cooper DM. 2009. Distinct mechanisms of regulation by Ca^{2+} /calmodulin of type 1 and 8 adenylyl cyclases support their different physiological roles. *Journal of Biological Chemistry* **284**:4451–4463. DOI: <https://doi.org/10.1074/jbc.M807359200>, PMID: 19029295
- Masada N**, Schaks S, Jackson SE, Sinz A, Cooper DM. 2012. Distinct mechanisms of calmodulin binding and regulation of adenylyl cyclases 1 and 8. *Biochemistry* **51**:7917–7929. DOI: <https://doi.org/10.1021/bi300646y>, PMID: 22971080
- Mo GC**, Ross B, Hertel F, Manna P, Yang X, Greenwald E, Booth C, Plummer AM, Tenner B, Chen Z, Wang Y, Kennedy EJ, Cole PA, Fleming KG, Palmer A, Jimenez R, Xiao J, Dedecker P, Zhang J. 2017. Genetically encoded biosensors for visualizing live-cell biochemical activity at super-resolution. *Nature Methods* **14**:427–434. DOI: <https://doi.org/10.1038/nmeth.4221>, PMID: 28288122
- Murphy JG**, Sanderson JL, Gorski JA, Scott JD, Catterall WA, Sather WA, Dell'Acqua ML. 2014. AKAP-anchored PKA maintains neuronal L-type calcium channel activity and NFAT transcriptional signaling. *Cell Reports* **7**:1577–1588. DOI: <https://doi.org/10.1016/j.celrep.2014.04.027>, PMID: 24835999
- Musheshe N**, Schmidt M, Zaccolo M. 2018. cAMP: from Long-Range second messenger to nanodomain signalling. *Trends in Pharmacological Sciences* **39**:209–222. DOI: <https://doi.org/10.1016/j.tips.2017.11.006>, PMID: 29289379
- Nesher R**, Anteby E, Yedovizky M, Warwar N, Kaiser N, Cerasi E. 2002. Beta-cell protein kinases and the dynamics of the insulin response to glucose. *Diabetes* **51** Suppl 1:S68–S73. DOI: <https://doi.org/10.2337/diabetes.51.2007.S68>, PMID: 11815461
- Ni Q**, Ganesan A, Aye-Han NN, Gao X, Allen MD, Levchenko A, Zhang J. 2011. Signaling diversity of PKA achieved via a Ca^{2+} -cAMP-PKA oscillatory circuit. *Nature Chemical Biology* **7**:34–40. DOI: <https://doi.org/10.1038/nchembio.478>, PMID: 21102470
- Nieuwenhuizen RP**, Bates M, Szymborska A, Lidke KA, Rieger B, Stallinga S. 2015. Quantitative localization microscopy: effects of photophysics and labeling stoichiometry. *PLOS ONE* **10**:e0127989. DOI: <https://doi.org/10.1371/journal.pone.0127989>, PMID: 25992915
- Ohta Y**, Furuta T, Nagai T, Horikawa K. 2018. Red fluorescent cAMP Indicator with increased affinity and expanded dynamic range. *Scientific Reports* **8**:1866. DOI: <https://doi.org/10.1038/s41598-018-20251-1>, PMID: 29382930
- Parekh AB**. 2011. Decoding cytosolic Ca^{2+} oscillations. *Trends in Biochemical Sciences* **36**:78–87. DOI: <https://doi.org/10.1016/j.tibs.2010.07.013>, PMID: 20810284
- Peercy BE**, Sherman AS, Bertram R. 2015. Modeling of glucose-induced cAMP oscillations in pancreatic β cells: camp rocks when metabolism rolls. *Biophysical Journal* **109**:439–449. DOI: <https://doi.org/10.1016/j.bpj.2015.06.024>, PMID: 26200880
- Petersen OH**. 2002. Calcium signal compartmentalization. *Biological Research* **35**:177–182. DOI: <https://doi.org/10.4067/S0716-97602002000200008>, PMID: 12415734
- Phair RD**, Gorski SA, Misteli T. 2004. Measurement of dynamic protein binding to chromatin in vivo, using photobleaching microscopy. *Methods in Enzymology* **375**:393–414. DOI: [https://doi.org/10.1016/s0076-6879\(03\)75025-3](https://doi.org/10.1016/s0076-6879(03)75025-3), PMID: 14870680
- Purkey AM**, Woolfrey KM, Crosby KC, Stich DG, Chick WS, Aoto J, Dell'Acqua ML. 2018. AKAP150 palmitoylation regulates synaptic incorporation of Ca^{2+} -Permeable AMPA Receptors to Control LTP. *Cell Reports* **25**:974–987. DOI: <https://doi.org/10.1016/j.celrep.2018.09.085>, PMID: 30355502
- Purvis JE**, Lahav G. 2013. Encoding and decoding cellular information through signaling dynamics. *Cell* **152**:945–956. DOI: <https://doi.org/10.1016/j.cell.2013.02.005>, PMID: 23452846
- Raoux M**, Vacher P, Papin J, Picard A, Kostrzewa E, Devin A, Gaitan J, Limon I, Kas MJ, Magnan C, Lang J. 2015. Multilevel control of glucose homeostasis by adenylyl cyclase 8. *Diabetologia* **58**:749–757. DOI: <https://doi.org/10.1007/s00125-014-3445-z>, PMID: 25403481
- Renström E**, Eliasson L, Rorsman P. 1997. Protein kinase A-dependent and -independent stimulation of exocytosis by cAMP in mouse pancreatic B-cells. *The Journal of Physiology* **502** (Pt 1):105–118. DOI: <https://doi.org/10.1111/j.1469-7793.1997.105bl.x>, PMID: 9234200
- Robertson HR**, Gibson ES, Benke TA, Dell'Acqua ML. 2009. Regulation of postsynaptic structure and function by an A-kinase anchoring protein-membrane-associated guanylate kinase scaffolding complex. *Journal of Neuroscience* **29**:7929–7943. DOI: <https://doi.org/10.1523/JNEUROSCI.6093-08.2009>, PMID: 19535604
- Rorsman P**, Ashcroft FM. 2018. Pancreatic β -Cell electrical activity and insulin secretion: of mice and men. *Physiological Reviews* **98**:117–214. DOI: <https://doi.org/10.1152/physrev.00008.2017>, PMID: 29212789
- Sassone-Corsi P**. 2012. The cyclic AMP pathway. *Cold Spring Harbor Perspectives in Biology* **4**:a011148. DOI: <https://doi.org/10.1101/cshperspect.a011148>, PMID: 23209152
- Saucerman JJ**, Greenwald EC, Polanowska-Grabowska R. 2014. Mechanisms of cyclic AMP compartmentation revealed by computational models. *Journal of General Physiology* **143**:39–48. DOI: <https://doi.org/10.1085/jgp.201311044>, PMID: 24378906

- Schaff J, Fink CC, Slepchenko B, Carson JH, Loew LM. 1997. A general computational framework for modeling cellular structure and function. *Biophysical Journal* **73**:1135–1146. DOI: [https://doi.org/10.1016/S0006-3495\(97\)78146-3](https://doi.org/10.1016/S0006-3495(97)78146-3), PMID: 9284281
- Schmitz O, Brock B, Hollingdal M, Juhl CB, Pørksen N. 2002. High frequency insulin pulsatility and type 2 diabetes: from physiology and pathophysiology to clinical pharmacology. *Diabetes & Metabolism* **28**:4S14–420. PMID: 12703061
- Smith FD, Esseltine JL, Nygren PJ, Veessler D, Byrne DP, Vonderach M, Strashnov I, Evers CE, Evers PA, Langeberg LK, Scott JD. 2017. Local protein kinase A action proceeds through intact holoenzymes. *Science* **356**:1288–1293. DOI: <https://doi.org/10.1126/science.aaj1669>
- Smith FD, Scott JD. 2002. Signaling complexes: junctions on the intracellular information super highway. *Current Biology* **12**:R32–R40. DOI: [https://doi.org/10.1016/S0960-9822\(01\)00646-7](https://doi.org/10.1016/S0960-9822(01)00646-7), PMID: 11790323
- Stern MD. 1992. Buffering of calcium in the vicinity of a channel pore. *Cell Calcium* **13**:183–192. DOI: [https://doi.org/10.1016/0143-4160\(92\)90046-U](https://doi.org/10.1016/0143-4160(92)90046-U), PMID: 1315621
- Tajada S, Moreno CM, O'Dwyer S, Woods S, Sato D, Navedo MF, Santana LF. 2017. Distance constraints on activation of TRPV4 channels by AKAP150-bound $pk\alpha$ in arterial myocytes. *Journal of General Physiology* **149**:639–659. DOI: <https://doi.org/10.1085/jgp.201611709>, PMID: 28507079
- Tengholm A. 2012. Cyclic AMP dynamics in the pancreatic β -cell. *Upsala Journal of Medical Sciences* **117**:355–369. DOI: <https://doi.org/10.3109/03009734.2012.724732>, PMID: 22970724
- Thompson JL, Shuttleworth TJ. 2015. Anchoring protein AKAP79-mediated PKA phosphorylation of STIM1 determines selective activation of the ARC channel, a store-independent orai channel. *The Journal of Physiology* **593**:559–572. DOI: <https://doi.org/10.1113/jphysiol.2014.284182>, PMID: 25504574
- Torres-Quesada O, Mayrhofer JE, Stefan E. 2017. The many faces of compartmentalized PKA signalosomes. *Cellular Signalling* **37**:1–11. DOI: <https://doi.org/10.1016/j.cellsig.2017.05.012>, PMID: 28528970
- Wachten S, Masada N, Ayling LJ, Ciruela A, Nikolaev VO, Lohse MJ, Cooper DM. 2010. Distinct pools of cAMP centre on different isoforms of adenylyl cyclase in pituitary-derived GH3B6 cells. *Journal of Cell Science* **123**:95–106. DOI: <https://doi.org/10.1242/jcs.058594>, PMID: 20016070
- White MA, Anderson RG. 2005. Signaling networks in living cells. *Annual Review of Pharmacology and Toxicology* **45**:587–603. DOI: <https://doi.org/10.1146/annurev.pharmtox.45.120403.095807>, PMID: 15822190
- Willoughby D, Masada N, Wachten S, Pagano M, Halls ML, Everett KL, Ciruela A, Cooper DM. 2010. AKAP79/150 interacts with AC8 and regulates Ca^{2+} -dependent cAMP synthesis in pancreatic and neuronal systems. *Journal of Biological Chemistry* **285**:20328–20342. DOI: <https://doi.org/10.1074/jbc.M110.120725>, PMID: 20410303
- Willoughby D, Halls ML, Everett KL, Ciruela A, Skrobilin P, Klussmann E, Cooper DM. 2012. A key phosphorylation site in AC8 mediates regulation of $ca(2+)$ -dependent cAMP dynamics by an AC8-AKAP79-PKA signalling complex. *Journal of Cell Science* **125**:5850–5859. DOI: <https://doi.org/10.1242/jcs.111427>, PMID: 22976297
- Willoughby D, Cooper DM. 2006. Ca^{2+} stimulation of adenylyl cyclase generates dynamic oscillations in cyclic AMP. *Journal of Cell Science* **119**:828–836. DOI: <https://doi.org/10.1242/jcs.02812>, PMID: 16478784
- Yang PC, Boras BW, Jeng MT, Docken SS, Lewis TJ, McCulloch AD, Harvey RD, Clancy CE. 2016. A computational modeling and simulation approach to investigate mechanisms of subcellular cAMP compartmentation. *PLOS Computational Biology* **12**:e1005005. DOI: <https://doi.org/10.1371/journal.pcbi.1005005>, PMID: 27409243
- Zanacchi FC, Manzo C, Alvarez AS, Derr ND, Garcia-Parajo MF, Lakadamyali M. 2017. A DNA origami platform for quantifying protein copy number in super-resolution. *Nature Methods* **14**:789–792. DOI: <https://doi.org/10.1038/nmeth.4342>, PMID: 28650478
- Zhang J, Hupfeld CJ, Taylor SS, Olefsky JM, Tsien RY. 2005. Insulin disrupts β -adrenergic signalling to protein kinase A in adipocytes. *Nature* **437**:569–573. DOI: <https://doi.org/10.1038/nature04140>
- Zhang J, Bal M, Bierbower S, Zaika O, Shapiro MS. 2011. AKAP79/150 signal complexes in G-protein modulation of neuronal ion channels. *Journal of Neuroscience* **31**:7199–7211. DOI: <https://doi.org/10.1523/JNEUROSCI.4446-10.2011>, PMID: 21562284
- Zhang M, Patriarchi T, Stein IS, Qian H, Matt L, Nguyen M, Xiang YK, Hell JW. 2013. Adenylyl cyclase anchoring by a kinase anchor protein AKAP5 (AKAP79/150) is important for postsynaptic β -Adrenergic signaling. *Journal of Biological Chemistry* **288**:17918–17931. DOI: <https://doi.org/10.1074/jbc.M112.449462>
- Zhang J, Carver CM, Choveau FS, Shapiro MS. 2016. Clustering and functional coupling of diverse ion channels and signaling proteins revealed by Super-resolution STORM microscopy in neurons. *Neuron* **92**:461–478. DOI: <https://doi.org/10.1016/j.neuron.2016.09.014>, PMID: 27693258
- Zhang X, Pathak T, Yeast R, Emrich S, Xin P, Nwokonko RM, Johnson M, Wu S, Delierneux C, Gueguinou M, Hempel N, Putney JW, Gill DL, Trebak M. 2019. A calcium/cAMP signaling loop at the ORAI1 mouth drives channel inactivation to shape NFAT induction. *Nature Communications* **10**:1971. DOI: <https://doi.org/10.1038/s41467-019-09593-0>, PMID: 31036819
- Zhang JZ, Lu TW, Stolerman LM, Tenner B, Yang JR, Zhang JF, Falcke M, Rangamani P, Taylor SS, Mehta S, Zhang J. 2020. Phase separation of a PKA regulatory subunit controls cAMP compartmentation and oncogenic signaling. *Cell* **182**:1531–1544. DOI: <https://doi.org/10.1016/j.cell.2020.07.043>, PMID: 32846158

Appendix 1

cAMP analysis and quantification

AKAP79-(Ci/Ce)Epac2-camps transfected cells displayed cAMP oscillations that were either in-phase or out-of-phase with their respective Ca^{2+} signal. This was in sharp contrast to responsive lyn-(Ci/Ce) Epac2-camps transfected cells where all cells yielded only out-of-phase oscillations. We found a strong correlation between the AKAP79-fused sensor expression level and the observed cAMP- Ca^{2+} phase relationship, with cells having lower levels of sensor present displaying predominantly in-phase cAMP oscillations and cells with higher levels of the AKAP79/150-fused biosensor exhibiting out-of-phase oscillations (**Appendix 1—figure 1**). Overexpression of the AKAP79 scaffold likely changed the stoichiometry of the signaling complexes and resulted in unsuccessful targeting of the biosensor to functional AKAP79/150 domains, and so in this manuscript we considered only TEA-responsive cells below an AKAP79 expression threshold determined by the YFP fluorescence (**Appendix 1—figure 1**).

Time lag calculation

Due to the heterogeneity of cellular Ca^{2+} and cAMP/PKA activity oscillatory responses in each cell (i.e. variations in frequency, amplitude, and regularity), we sought an applicable metric to describe the phase relationship. Here we measure the lag time (sec) between the Ca^{2+} signal trace and the cAMP/PKA activity signal trace. Specifically, we high-pass filtered both the Ca^{2+} and cAMP/PKA activity traces (approximately 20 min) to subtract out slowly varying baseline changes, normalized the traces so that the maximum intensity/FRET ratio was set to 1, and then computed the cross-correlation to measure the signal overlap for different lag times. To calculate the lag time, we identified peaks in the cross-correlation passing a peak prominence cutoff and found the absolute value of the shortest lag time corresponding to a peak maximum. For in-phase oscillations, the lag time was typically small ($\tau \leq 20$ s) due to the two signal traces oscillating in synchrony. On the other hand, out-of-phase oscillations typically corresponded to longer lag times ($\tau > 20$ s) due to the anti-phasic relationship seen in the peak timing and peak shape. Analysis was performed with custom scripts in MATLAB and Java, and pipelines in CellProfiler.

Quantification of nanodomain perturbation effects on global Ca^{2+}

In order to measure the effects of AKAP79/150:AC8 disruption on Ca^{2+} dynamics, we transiently transfected and expressed AC8¹⁻¹⁰⁶ in MIN6 cells and measured Ca^{2+} with RCaMP. For quantification of the interpeak timing and peak ratio, we first selected cells that responded to the TEA treatment, identified Ca^{2+} peaks passing a peak prominence cutoff, and finally calculated the avg. time between peak maxima and RFP intensity ratio between the second and first Ca^{2+} peak maxima. To find the percentage of cells with regular vs. irregular Ca^{2+} oscillations, we randomized all Ca^{2+} traces from the experimental and control samples and performed a blinded classification to sort the single cell traces as regular, irregular, or nonresponsive. Analysis was performed with custom scripts in MATLAB and Java, and pipelines in CellProfiler.

Computational modeling

Well-mixed system

Assumptions

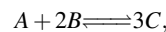
- Signaling components are present in large enough quantities that concentration changes are smooth and move in a deterministic fashion.
- Well-mixed kinetic rate constants contain conversion factors between compartments, that is membrane to cytosol.
- Binding interactions occur rapidly enough such that any kinetic parameter, k , remains constant on surfaces (**Berry, 2002**).
- AKAP does not alter the activity of the catalytic subunits of Protein kinase A (PKA) instead it only affects localization.

- Ca^{2+} independent activity of Adenylyl cyclase (AC) is of the same strength as inactive Ca^{2+} dependent Adenylyl cyclase (AC8) and stays at a constant value.

Modeling well-mixed chemical reactions

Mass-action kinetics

We generated an ordinary differential equation (ODE) for every species using mass-action kinetics for each binding interaction. The law of mass-action states that the rate of a chemical reaction is proportional to the product of the concentration of the reactants raised to the power of their stoichiometric coefficient (**Guldberg and Waage, 1879**). Mass-action kinetics rely on the assumption that the rate constant, k , is constant over time. For example, consider the one-reaction system:

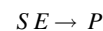


where the forward and backward rates are k_1 and k_2 . The differential equations describing the dynamics of species A , B , and C under mass-action kinetics are:

$$\frac{d[A]}{dt} = k_2[C]^3 - k_1[A][B]^2 \quad \frac{d[B]}{dt} = 2k_2[C]^3 - 2k_1[A][B]^2 \quad \frac{d[C]}{dt} = 3k_1[A][B]^2 - 3k_2[C]^3.$$

Michaelis-Menten kinetics

We used Michaelis-Menten kinetics to model the kinetics of enzyme-catalyzed reactions. When a reaction is catalyzed by an enzyme with kinetic properties k_{cat} and K_M ,



then the reaction rate is given by

$$\frac{d[S]}{dt} = -\frac{k_{cat}[E][S]}{K_M + [S]} = \frac{d[P]}{dt}.$$

For Michaelis-Menten kinetics, concentrations of reactants and products must be in large enough quantities, and one of the following conditions must apply: the concentration of the substrate is much larger than the concentration of products, $[S] \gg [P]$, and/or the energy released in the reaction is very large, $\Delta G \ll 0$.

Model development

We constructed a biochemical network to represent interactions between Ca^{2+} and cAMP in β 92-cells, **Figure 1b**, (**Fridlyand and Philipson, 2016**; **Ni et al., 2011**) after a depolarization event. The computational model considered the dynamics of calcium, potassium, leaky, and calcium-sensitive potassium channels (**Appendix 1—table 1**). Importantly, we included feedback of PKA with KATP channels and the inclusion of Ca^{2+} -sensitive ACs and PDEs. The model contains a total of **92** parameters with **11** free parameters. The values of the parameters are constrained through both previously peer-reviewed publication results (**Ang and Antoni, 2002**; **Boras et al., 2014**; **Lai et al., 2015**; **Masada et al., 2009**; **Ni et al., 2011**) and with new experimental results using obtained FRET measurements. To constrain source and sink activation rates, previously published literature of AC and PDE stimulus-response curves (of related isoforms) was utilized (**Ang and Antoni, 2002**; **Masada et al., 2009**). COPASI was used to calculate initial guesses for kinetic activation parameters. FRET measurements took precedence over binding curves, especially for the spatial model where further fitting routines were performed to refine the model. Model variations were performed to attain both semi-physiological concentrations (within the ranges of the sensor) and phase (period and relation) information. Predictions are made on qualitative behavior as opposed to quantitative as proper parameter fitting would require much more data than available for this system.

Values and reaction sets used in the well-mixed model can be found in **Appendix 1—tables 1–5**. The network of interactions was constructed using COPASI (version 4.23, build 184)

(<http://www.nrcam.uchc.edu>, <http://copasi.org/>) (**Hoops et al., 2006**). The model was built in COPASI to leverage the inbuilt fitting techniques for initial parameter guesses pre-FRET.

Well-mixed computational results

The network shown in **Figure 1b** has been shown to exhibit oscillations through cAMP variation due to the action of PKA on IP3 receptors and KATP plasma membrane channels. This network has been studied in many labs previous work (**Fridlyand et al., 2007; Fridlyand et al., 2003; Han et al., 1999; Ni et al., 2011**) and has been explored to show:

- The system can be moved in and out-of-phase through tuning of AC (**Fridlyand and Philipson, 2016**).
- The oscillation rate can be tuned through PKA feedback to KATP channels (**Ni et al., 2011**).
- Both Ca²⁺ sensitive PDE and AC is necessary for oscillations to occur (**Ni et al., 2011**).

Our model results agree with the above findings.

Variations in the connection strength of sources and sinks also introduced another finding—changing the component's (source or sink) variability in the regime of Ca²⁺ spiking (0.1-1.2 μM) a switch in-phase can also be observed, **Appendix 1—figure 2**. Compared to well-mixed results, **Appendix 1—figure 2a**, by decreasing the activation rate of CaMAC from 59.5 to 0.6 s⁻¹, a switch to out-of-phase can occur, **Appendix 1—figure 2c**. Yet, we notice how increasing basal PDE activity does not switch the phase **Appendix 1—figure 2b**, only after subsequently decreasing PDE and CaM association does the phase change **Appendix 1—figure 2d**. This is due to both changes being required for the activity variation of PDE to outperform that of AC. These findings lead to more questions about how source and sink activities relate in a variable Ca²⁺ regime.

Well-mixed reaction tables

Appendix 1—table 1. Voltage gated channel reactions.

#	Species	Expression	Parameters	Ref.
1	Membrane Voltage	$\frac{dV}{dt} = \frac{-I_{Ca} - I_K - I_L - I_{KCa}}{C_m}$	$C_m = 5.3 \text{ pF}$	Ni et al., 2011
2	Ca ²⁺ current	$I_{Ca} = g_{Ca} m_{\infty} (V - E_{Ca})$	$g_{Ca} = 600 \text{ pS}$, $E_{Ca} = 100 \text{ mV}$	Ni et al., 2011
3	Fraction of open VGCC (at steady state)	$m_{\infty} = \frac{1}{2} \left(1 + \tanh \left(\frac{V - v_1}{v_2} \right) \right)$	$v_1 = -20 \text{ mV}$, $v_2 = 24 \text{ mV}$	Ni et al., 2011
4	K ⁺ current	$I_K = g_K w (V - E_K)$	$g_K = 240 \text{ pS}$, $E_{Ca} = -75 \text{ mV}$	Ni et al., 2011
5	Fraction of open K ⁺ channels (at steady state)	$\frac{dw}{dt} = \frac{\Phi(w_{\infty} - w)}{\tau}$	$\phi = 35 \frac{1}{s}$	Ni et al., 2011
6	Time constant for K ⁺ channel open probability	$\tau = \frac{1}{\cosh \left(\frac{V - v_3}{2v_4} \right)}$	$v_3 = -16 \text{ mV}$, $v_4 = 11.2 \text{ mV}$	Ni et al., 2011
7	leak current	$I_L = g_L (V - E_L)$	$g_L = 150 \text{ pS}$, $E_L = -75 \text{ mV}$	Zhang et al., 2005
8	Ca ²⁺ gated K ⁺ current	$I_{KCa} = g_{KCa} \frac{Ca}{Ca + K_{KCa}} (V - E_K)$	$g_{KCa} = 2000 \text{ pS}$, $E_{Ca} = -75 \text{ mV}$, $K_{KCa} = 5 \mu\text{M}$	Ni et al., 2011

Appendix 1—table 2. Ca²⁺ flux and reactions.

#	Reaction	Reaction flux	Kinetic parameters	Ref.
9	→ Ca	$j_{Ca_v} (1 + k_{PKA_v} [PKA]) + j_{Ca_i}$	$k_{PKA_v} = 3000 \text{ s}^{-1} \cdot \mu\text{M}^{-1}$	Ni et al., 2011
10	j_{Ca_v}	$f_i (-\alpha I_{Ca} - v_{LPM} [Ca])$	$f_i = 1 \times 10^{-5}$ $\alpha = 0.0045 \mu\text{M} \cdot \text{f}^{\Delta-1} \cdot \text{s}^{-1}$ $v_{LPM} = 75 \text{ s}^{-1}$	Ni et al., 2011

Continued on next page

Appendix 1—table 2 continued

#	Reaction	Reaction flux	Kinetic parameters	Ref.
11	j_{Ca}	$\frac{Ck_{IP3R}PKA[A]Ca}{1+A[Ca]+B[Ca]^2}([Ca_{stores}] - [Ca]) - \frac{V_s[Ca]^2}{K_s^2 + [Ca]^2}$	$K_s = 10 \mu M,$ $Ca_{stores} = 1.56 \mu M,$ $V_s = 0.1 \mu M \cdot s^{-1},$ $k_{IP3R} = 0.05,$ $A = 0.2869 \mu M^{-1},$ $B = 2.869 \mu M^{-2},$ $C = 0.2133$	Ni et al., 2011
12	$2Ca + CaM \leftrightarrow Ca^2CaM$	$k_f[Ca][CaM] - k_r[Ca^2CaM]$	$k_f = 3.6 s^{-1} \cdot \mu M^{-1},$ $k_r = 8 s^{-1}$	Lai et al., 2015
13	$Ca + Ca^2CaM \leftrightarrow Ca^3CaM$	$k_f[Ca][Ca^2CaM] - k_r[Ca^3CaM]$	$k_f = 11 s^{-1} \cdot \mu M^{-1},$ $k_r = 195 s^{-1}$	Lai et al., 2015
14	$Ca + Ca^3CaM \leftrightarrow Ca^4CaM$	$k_f[Ca][Ca^3CaM] - k_r[Ca^4CaM]$	$k_f = 59 s^{-1} \cdot \mu M^{-1},$ $k_r = 500 s^{-1}$	Lai et al., 2015
15	$AC + Ca^2CaM \leftrightarrow CaM \cdot AC$	$k_f[AC][Ca^2CaM] - k_r[CaM \cdot AC]$	$k_f = 1.7 s^{-1} \cdot \mu M^{-1},$ $k_r = 10 s^{-1}$	Masada et al., 2009; Masada et al., 2012
16	$CaM \cdot AC + 2Ca \leftrightarrow AC^*$	$K_{cat} \frac{[Ca][CaM \cdot AC]}{Ca + K_m} - k_r[AC^*]$	$K_{cat} = 59.5 s^{-1},$ $K_m = 0.1 \mu M,$ $k_r = 10 s^{-1}$	Masada et al., 2009; Masada et al., 2012
17	$PDE + Ca^2CaM \leftrightarrow CaM \cdot PDE$	$k_f[PDE][Ca^2CaM] - k_r[CaM \cdot PDE]$	$k_f = 435 s^{-1} \cdot \mu M^{-1},$ $k_r = 1 s^{-1}$	Ang and Antoni, 2002
18	$CaM \cdot PDE + 2Ca \leftrightarrow PDE^*$	$K_{cat} \frac{[Ca][CaM \cdot PDE]}{Ca + K_m} - k_r[PDE^*]$	$K_{cat} = 1.81 s^{-1},$ $K_m = 0.18 \mu M,$ $k_r = 1 s^{-1}$	Ang and Antoni, 2002
19	$PDE + Ca^4CaM \leftrightarrow PDE^*$	$k_f[PDE][Ca^4CaM] - k_r[PDE^*]$	$k_f = 435 s^{-1} \cdot \mu M^{-1},$ $k_r = 1 s^{-1}$	Ang and Antoni, 2002

*denotes the activated form

Appendix 1—table 3. cAMP reactions.

#	Reaction	Reaction flux	Kinetic parameters	Ref.
20	$\rightarrow cAMP$	$k_{base}([CaM \cdot AC] + [AC] + [AC_{ind}]) + k_{act}[AC^*]$	$k_{base} = 0.1 s^{-1},$ $k_{act} = 0.785 s^{-1}$	Leonid E. Fridlyand & Philipson, 2016; Ni et al., 2011
21	$cAMP \rightarrow$	$k_{base}[cAMP] \frac{[CaM \cdot PDE] + [PDE]}{[cAMP] + K_m} + k_{act} \frac{[cAMP][PDE^*]}{[cAMP] + K_m}$	$k_{base} = 0.2 s^{-1},$ $K_m = 0.6 \mu M,$ $k_{act} = 2.5 s^{-1}$	Ni et al., 2011; Fridlyand and Philipson, 2016
22	$cAMP \rightarrow$	$V_{ind} \frac{[cAMP]}{[cAMP] + K_m}$	$V_{ind} = 2.5 \mu M \cdot s^{-1},$ $K_m = 1.4 \mu M$	Ni et al., 2011; Fridlyand and Philipson, 2016
23	$cAMP + R2 \rightarrow R2_b$	$k_f[cAMP][R2] - k_r[R2_b]$	$k_f = 1 s^{-1} \cdot \mu M^{-1},$ $k_r = 0.00033 s^{-1}$	Boras et al., 2014
24	$cAMP + R2_b \rightarrow R2_{ba}$	$k_f[cAMP][R2_b] - k_r[R2_{ba}]$	$k_f = 1 s^{-1} \cdot \mu M^{-1},$ $k_r = 0.00105 s^{-1}$	Boras et al., 2014

Continued on next page

Appendix 1—table 3 continued

#	Reaction	Reaction flux	Kinetic parameters	Ref.
25	cAMP + R2 _b → R2 _{bb}	$k_f[cAMP][R2_b] - k_r[R2_{bb}]$	$k_f = 1 \text{ s}^{-1} \cdot \mu\text{M}^{-1}$, $k_r = 0.00132 \text{ s}^{-1}$	Boras et al., 2014
26	cAMP + R2 _{ba} → R2 _{bba}	$k_f[cAMP][R2_{ba}] - k_r[R2_{bba}]$	$k_f = 1 \text{ s}^{-1} \cdot \mu\text{M}^{-1}$, $k_r = 0.0013 \text{ s}^{-1}$	Boras et al., 2014
27	cAMP + R2 _{bb} → R2 _{bba}	$k_f[cAMP][R2_{bb}] - k_r[R2_{bba}]$	$k_f = 1 \text{ s}^{-1} \cdot \mu\text{M}^{-1}$, $k_r = 0.00103 \text{ s}^{-1}$	Boras et al., 2014
28	cAMP + R2 _{bba} → R2 _{bbaa}	$k_f[cAMP][R2_{bba}] - k_r[R2_{bbaa}]$	$k_f = 1 \text{ s}^{-1} \cdot \mu\text{M}^{-1}$, $k_r = 0.0114 \text{ s}^{-1}$	Boras et al., 2014
29	PKA + R2 → R2C	$k_f[PKA][R2] - k_r[R2C]$	$k_f = 1 \text{ s}^{-1} \cdot \mu\text{M}^{-1}$, $k_r = 1.26\text{E-}7 \text{ s}^{-1}$	Boras et al., 2014
30	PKA + R2 _b → R2 _{bC}	$k_f[PKA][R2_b] - k_r[R2_bC]$	$k_f = 1 \text{ s}^{-1} \cdot \mu\text{M}^{-1}$, $k_r = 2.52\text{E-}7 \text{ s}^{-1}$	Boras et al., 2014

Appendix 1—table 4. cAMP reactions (cont.).

#	Reaction	Reaction flux	Kinetic parameters	Ref.
31	PKA + R2 _{ba} → R2 _{ba} C	$k_f[PKA][R2_{ba}] - k_r[R2_{ba}C]$	$k_f = 1 \text{ s}^{-1} \cdot \mu\text{M}^{-1}$, $k_r = 3.4\text{E-}6 \text{ s}^{-1}$	Boras et al., 2014
32	PKA + R2 _{bba} → R2 _{bba} C	$k_f[PKA][R2_{bba}] - k_r[R2_{bba}C]$	$k_f = 1 \text{ s}^{-1} \cdot \mu\text{M}^{-1}$, $k_r = 0.000936 \text{ s}^{-1}$	Boras et al., 2014
33	PKA + R2 _{bbaa} → R2 _{bbaa} C	$k_f[PKA][R2_{bbaa}] - k_r[R2_{bbaa}C]$	$k_f = 1 \text{ s}^{-1} \cdot \mu\text{M}^{-1}$, $k_r = 0.645 \text{ s}^{-1}$	Boras et al., 2014
34	cAMP + R2C → R2 _b C	$k_f[cAMP][R2C] - k_r[R2_bC]$	$k_f = 1 \text{ s}^{-1} \cdot \mu\text{M}^{-1}$, $k_r = 0.000659 \text{ s}^{-1}$	Boras et al., 2014
35	cAMP + R2 _b C → R2 _{ba} C	$k_f[cAMP][R2_bC] - k_r[R2_{ba}C]$	$k_f = 1 \text{ s}^{-1} \cdot \mu\text{M}^{-1}$, $k_r = 0.0142 \text{ s}^{-1}$	Boras et al., 2014
36	cAMP + R2 _{ba} C → R2 _{bbC} C	$k_f[cAMP][R2_{ba}C] - k_r[R2_{bbC}C]$	$k_f = 1 \text{ s}^{-1} \cdot \mu\text{M}^{-1}$, $k_r = 0.0142 \text{ s}^{-1}$	Boras et al., 2014
37	cAMP + R2 _{bba} C → R2 _{bbaa} C	$k_f[cAMP][R2_{bba}C] - k_r[R2_{bbaa}C]$	$k_f = 1 \text{ s}^{-1} \cdot \mu\text{M}^{-1}$, $k_r = 7.84 \text{ s}^{-1}$	Boras et al., 2014
38	PKA + R2 _b C → R2 _b C ₂	$k_f[PKA][R2_bC] - k_r[R2_bC_2]$	$k_f = 1 \text{ s}^{-1} \cdot \mu\text{M}^{-1}$, $k_r = 0.00324 \text{ s}^{-1}$	Boras et al., 2014
39	PKA + R2C → R2C ₂	$k_f[PKA][R2C] - k_r[R2C_2]$	$k_f = 1 \text{ s}^{-1} \cdot \mu\text{M}^{-1}$, $k_r = 2.81\text{E-}6 \text{ s}^{-1}$	Boras et al., 2014
40	PKA + R2 _{ba} C → R2 _{ba} C ₂	$k_f[PKA][R2_{ba}C] - k_r[R2_{ba}C_2]$	$k_f = 1 \text{ s}^{-1} \cdot \mu\text{M}^{-1}$, $k_r = 0.666 \text{ s}^{-1}$	Boras et al., 2014
41	cAMP + R2C ₂ → R2 _b C ₂	$k_f[cAMP][R2C_2] - k_r[R2_bC_2]$	$k_f = 1 \text{ s}^{-1} \cdot \mu\text{M}^{-1}$, $k_r = 0.762 \text{ s}^{-1}$	Boras et al., 2014
42	cAMP + R2 _b C ₂ → R2 _{ba} C ₂	$k_f[cAMP][R2_bC_2] - k_r[R2_{ba}C_2]$	$k_f = 1 \text{ s}^{-1} \cdot \mu\text{M}^{-1}$, $k_r = 2.91 \text{ s}^{-1}$	Boras et al., 2014

Appendix 1—table 5. Initial conditions.

#	Species	Initial value	Ref.
IC1	AC8	1 μM	
IC2	AC _{ind}	1 μM	
IC3	Ca ²⁺	1 μM	
IC4	CaM	10 μM	
IC5	cAMP	0.1 μM	
IC6	PDE1	1 μM	
IC7	PDE4	0.4 μM	
IC8	R2C2	0.4 μM	
IC9	V	-60 mV	

Minimal model to explore Ca²⁺-cAMP phase behavior

Based on the well-mixed model, we propose a minimal circuit to understand the phase behavior of Ca²⁺-cAMP. Consider the system in **Figure 2c**, where Ca²⁺ is the stimulus which uses a pulse train to set influx times, AC is an activator, PDE1C is an inhibitor, and cAMP is the response element.

Assumptions

The system is in a state such that the change in cAMP allows for further Ca²⁺ influx in a semi-predictable manner, as represented by the pulse train. Therefore, this system is deemed to be stable if there exists a Ca²⁺ value that gives a stable solution for cAMP. All constants must be positive to remain physically relevant. We assume that there exists a constant independent source and sink within the system. The Ca²⁺-dependent and independent sources are localized homogeneously on the membrane, with both sinks located uniformly in the cytosol. For simplicity, we assume that the activation function for both AC and PDE1C are linear functions of Ca²⁺ of the form $aS + b$.

Governing Equations

We define a stimulus (S , Ca²⁺) and a response element (R , cAMP). The well-mixed rate of change function for cAMP is then given by,

$$\frac{dR}{dt} = v_1(a_1S + b_1) - v_2(a_2S + b_2)R + v_{ip} - v_{id}R$$

Here, v_1 denotes the velocity of cAMP production by AC, v_2 the rate of degradation by PDE, and v_{ip} and v_{id} the rates of independent production and degradation respectively.

Analytical solutions for the minimal model

To analyze if the system lies in an in- or out-of-phase state we find the direction of the system change after initialization to S_0 [i.e. the basal stimulus (initial concentration of Ca²⁺)]. First, we must solve for R_0 (initial concentration of cAMP) by setting $\frac{dR}{dt} = 0$, we find:

$$R_0 = \frac{v_1(a_1S_0 + b_1) + v_{ip}}{v_2(a_2S_0 + b_2) + v_{id}}$$

We start the system at equilibrium and prescribe a discontinuous pulse of S from S_0 to S_n , akin to VGCC opening allowing Ca²⁺ flux. Therefore, solving for the sign of R , we obtain

$$\begin{aligned} \left. \frac{dR}{dt} \right|_{t=0} &= v_1(a_1S_h + b_1) + v_{ip} - (v_2(a_2S_h + b_2) + v_{id}) \frac{v_1(a_1S_0 + b_1) + v_{ip}}{v_2(a_2S_0 + b_2) + v_{id}} \\ \left. \frac{dR}{dt} \right|_{t=0} &= \frac{(v_1a_1(v_2b_2 + v_{id}) - v_2a_2(v_1b_1 + v_{ip}))(S_h - S_0)}{v_2(a_2S_0 + b_2) + v_{id}} \end{aligned}$$

Since we consider the sign we can then characterize the solution by

$$\begin{aligned} \frac{v_1a_1(v_2b_2 + v_{id})}{v_2a_2(v_1b_1 + v_{ip})} > 1 & \quad \text{inphase(low } \tau) \\ \frac{v_1a_1(v_2b_2 + v_{id})}{v_2a_2(v_1b_1 + v_{ip})} = 1 & \quad \text{transition(flatline)} \\ \frac{v_1a_1(v_2b_2 + v_{id})}{v_2a_2(v_1b_1 + v_{ip})} < 1 & \quad \text{outofphase(high } \tau) \end{aligned}$$

This model was then computationally run to confirm the results with arbitrary parameters (**Figure 2c**). The system was simulated with all parameters set to 1 except v_1 and v_2 at values of 4 and 2, respectively and vice-versa. The pulse train is ON for 1 sec ($S_h = 10$) and OFF for 3 sec ($S_0 = 1$), and repeats until the simulation total time is reached.

Numerical implementation of the minimal model

We performed numerical simulations in MATLAB R2018b and checked against analytic solutions provided in the previous section. Minimal model solutions are shown in **Figure 2c**.

Stochastic implementation of the minimal model

To further explore the possible effects of noise and small numbers of molecules on the simplified four component model, we created a stochastic version of the model. Due to the nature of stochastic simulations, all reactions were rewritten to multistep interactions. In order to allow for oscillatory kinetics at the membrane, a Lotka-Volterra model (in a larger volume, for numerical stability) was utilized to simulate depolarization events shown in **Appendix 1—table 8**. The system was solved using the Gibson method in the Virtual Cell modeling platform. All Ca^{2+} , AC, and PDE reactions are shown in **Appendix 1—tables 6–9**.

Appendix 1—table 6. Initial conditions for the stochastic model.

Species	Number of molecules in the system
Ca^{2+}	10
PDE	45
PDE*	5
AC	10–200 (log scale)
s0	10000
s4	1000

Appendix 1—table 7. Compartment volumes for the stochastic model.

Compartment	Compartment size
Cytosol	$0.083 \mu\text{m}^3$
Membrane	$0.28 \mu\text{m}^2$
Oscillator	$6563.0 \mu\text{m}^2$

Appendix 1—table 8. Lotka-Volterra model to initiate the membrane depolarization events.

#	Reaction	Parameters
1	$s_0 \rightarrow 2s_0$	$K_f = 1.7 \text{ s}^{-1}$
2	$s_0 + s_4 \rightarrow 2s_4$	$K_f = 1 \mu\text{m}^2 \cdot \text{molecule}^{-1} \cdot \text{s}^{-1}$
3	$s_4 \rightarrow$	$K_f = 1.7 \text{ s}^{-1}$

Appendix 1—table 9. simplified model reactions for the stochastic model.

#	Reaction	Parameters
4	$s_4 \rightarrow > s_4 + \text{Ca}^{2+}$	$K_f = 150 \text{ s}^{-1}$
5	$\text{Ca}^{2+} \rightarrow$	$K_f = 500 \mu\text{m}^{-2} \cdot \text{molecule} \cdot \text{s}^{-1} \cdot \mu\text{M}^{-1}$
6	$\text{AC} + \text{Ca}^{2+} \rightarrow \text{AC}^*$	$K_f = 200 \text{ s}^{-1} \cdot \mu\text{M}^{-1}$ $K_r = 300 \text{ s}^{-1}$
7	$\text{AC}^* \rightarrow > \text{cAMP} + \text{AC}^*$	$K_f = 300 \text{ s}^{-1}$
8	$\text{AC} \rightarrow \text{cAMP} + \text{AC}$	$K_f = 5 \text{ s}^{-1}$
9	$\text{PDE} + \text{Ca}^{2+} \rightarrow \text{PDE}^*$	$K_f = 150 \text{ s}^{-1} \cdot \mu\text{M}^{-1}$ $K_r = 100 \text{ s}^{-1}$
10	$\text{PDE} + \text{cAMP} \rightarrow \text{PDE}$	$K_f = 50 \text{ s}^{-1} \cdot \mu\text{M}^{-1}$
11	$\text{PDE}^* + \text{cAMP} \rightarrow \text{PDE}^*$	$K_f = 1000 \text{ s}^{-1} \cdot \mu\text{M}^{-1}$
12	$\rightarrow \text{cAMP}$	$J = 9000 \mu\text{m}^{-2} \cdot \text{molecule} \cdot \text{s}^{-1}$
13	$\text{cAMP} \rightarrow$	$K_f = 50 \text{ s}^{-1}$

Solutions to the stochastic model are shown in **Figure 6—figure supplement 2**. The Virtual Cell Model, ‘Minimum Stochastic Model BetaCell’ by user ‘mgetz’, can be accessed within the VCell software (available at <https://vcell.org>). The Virtual Cell is supported by NIH Grant R24 GM134211 from the National Institute for General Medical Sciences (Cowan et al., 2012; Schaff et al., 1997).

Simulations of the full spatial systems

For computational simplification, simulations were performed with a Gaussian profile on the top boundary, the size of the domain and Gaussian profile were informed by STORM images, **Figure 3**. The system is a hexagonal prism with outer diameter of 0.4 μm and depth 0.6 μm with periodic boundary conditions in the x and y planes, see **Figure 4a**. The top plane is assumed to be the membrane and the bottom is a no-flux condition. For the membrane plane, a Gaussian profile was normalized such that the average value is $4 \times 10^{-10} \text{ mol/m}^2$. The Ca^{2+} sensitive AC initial condition (Gaussian profile) is fixed for all simulation times by setting the diffusion constant to ≈ 0 . To test the effect of localization, a percentage of AC mass was moved from the Gaussian profile into a uniform profile (a 25% Localization means that 25% of the total AC mass is within the Gaussian profile and the remaining 75% is within the uniform profile). Examples of surface profiles at multiple % localizations can be seen in **Figure 4b**.

Assumptions

- Membrane patterns are pre-existing and not affected by a single signaling event such that no diffusion occurs.
- Clustering events were approximated by a Gaussian profile in the center of the hexagonal prism.

Model development

Although the well-mixed system shows the ability to oscillate in and out-of-phase in a well-behaved manner, the spatial model will not produce this effect if a homogeneous boundary is present. Previous studies have looked at spatial gradients in the context of cAMP and PKA and found out that localization of some species is necessary for the system to demonstrate different behaviors (Yang et al., 2016). Therefore, when moving to a 3D spatial map, we must consider how the two solution regimes can be recovered. Experimental data suggest that AKAP dimerizes and may form oligomers (Gao et al., 2011; Gold et al., 2011), which is important for the function of these cells (Zhang et al., 2013). This could allow spatial instabilities like those seen in Haselwandter et al., 2015 used to describe post synaptic domains. The final Gaussian profile on the top boundary had the size of the domain and Gaussian profile informed by STORM images of AC clustering (Figure 3). Statistics of the images show that, on average, 90% of the AC sits within 54 nm of the cluster center. The system was determined to be 0.35 x 0.35 x 0.6 μm hexagonal prism with a Gaussian standard deviation of 25 nm.

The kinetic parameters used were the same as for the well-mixed model, except for a few cases in which tuning through surface/volume relationships was needed. Post fitting was performed to further refine the relationship between PDE and AC through use of obtained FRET measurements (see section 4). Due to the large computational expense of the model, the PDE interactions were reduced to two steps (Appendix 1—table 10).

Appendix 1—table 10. Ca²⁺ Flux and reactions modified from Appendix 1—table 2.

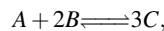
#	Reaction	Reaction flux	Kinetic parameters	Ref.
S1	→ Ca ²⁺	$j_{Cav}(1 + k_{PKAV}[PKA]) + J_{Ca_i}$	$k_{PKAV} = 100 \mu M^{-1}$	FRET constraint
S2	j_{Cav}	$f_i(-\alpha I_{Ca} - v_{LPM}[Ca])$	$f_i = 1 \times 10^{-6}$, $\alpha = 4.15 \times 10^5 mol \cdot m^{-2} \cdot A^{-2} \cdot s^{-1}$, $v_{LPM} = 7.5 \times 10^{-4} m \cdot s^{-1}$	Ni et al., 2011
S3	j_{Ca_i}	$\frac{C_{k_{IP3R}}[PKA][Ca]}{1+A[Ca]+B[Ca]^2} ([Ca_{stores}] - [Ca]) - \frac{V_s[Ca]^2}{K_s^2+[Ca]^2}$	$K_s = 10 \mu M$, $Ca_{stores} = 1.56 \mu M$, $V_s = 0.1 \mu M \cdot s^{-1}$, $k_{IP3R} = 0.05 \mu M^{-1} s^{-1}$, $A = 0.2869 \mu M^{-1}$, $B = 2.869 \mu M^{-2}$, $C = 0.2133$	Ni et al., 2011
S4	AC + Ca ²⁺ CaM ↔ CaM · AC	$k_f[AC][Ca^2CaM] - k_r[CaM \cdot AC]$	$k_f = 10.8 s^{-1} \cdot \mu M^{-1}$, $k_r = 10 s^{-1}$	FRET constraint
S5	CaM · AC + 2Ca ²⁺ ↔ AC*	$K_{cat} \frac{[Ca][CaM \cdot AC]}{Ca+K_m} - k_r[AC^*]$	$K_{cat} = 90 s^{-1}$, $K_m = 1 \mu M$, $k_r = 10 s^{-1}$	FRET constraint
S6	PDE + Ca ²⁺ CaM ↔ CaM · PDE	$k_f[PDE][Ca^2CaM] - k_r[CaM \cdot PDE]$	$k_f = 0.25 s^{-1} \cdot \mu M^{-1}$, $k_r = 1 s^{-1}$	FRET constraint
S7	CaM · PDE + 2Ca ²⁺ ↔ PDE*	$K_{cat} \frac{[Ca][CaM \cdot PDE]}{Ca+K_m} - k_r[PDE^*]$	$K_{cat} = 60 s^{-1}$, $K_m = 1 \mu M$, $k_r = 1 s^{-1}$	FRET constraint
S8	PDE + Ca ⁴⁺ CaM ↔ PDE*	$k_f[PDE][Ca^4CaM] - k_r[PDE^*]$	$k_f = 0.25 s^{-1} \cdot \mu M^{-1}$, $k_r = 1 s^{-1}$	FRET constraint

Numerical simulation

The well-mixed network was imported into COMSOL Multiphysics5.4 (Build:295), to solve the spatial model with inhomogeneous boundary conditions at the plasma membrane.

Reaction-Diffusion Partial differential equations (PDEs)

Consider the same one-reaction system as the well-mixed system:



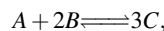
where the forward and backward rates are k_1 and k_2 . But, now we spatially discretize the system, the partial differential equations describing the dynamics of species A , B , and C with unrestricted diffusion are then:

$$\begin{aligned} \frac{\partial[A]}{\partial t} &= D_A \nabla^2[A] + k_2[C]^3 - k_1[A][B]^2 \\ \frac{\partial[B]}{\partial t} &= D_B \nabla^2[B] + 2k_2[C]^3 - 2k_1[A][B]^2 \\ \frac{\partial[C]}{\partial t} &= D_C \nabla^2[C] + 3k_1[A][B]^2 - 3k_2[C]^3. \end{aligned}$$

Where ∇^2 is the Laplacian and D_A is a diagonal matrix of diffusion coefficients for component A . Yet within the cell, all reactions do not occur in the free volume. In fact, most interactions occur on a membrane surface, which requires a different boundary condition.

Reactions on the system boundary

Now let us assume the previous reaction occurs on the boundary and C is a membrane species on surface Ω



This would mean within the volume there is only free diffusion,

$$\begin{aligned} \frac{\partial[A]}{\partial t} &= D_A \nabla^2[A] \\ \frac{\partial[B]}{\partial t} &= D_B \nabla^2[B] \end{aligned}$$

At the surface we would have a Neumann boundary condition, that is, a defined flux occurring into the boundary normal. We define the reaction as a flux occurring at a membrane surface (Ω)

$$\begin{aligned} \nabla A(x, t) \cdot \hat{n}(x)|_{\partial\Omega} &= k_2[C]^3 - k_1[A][B]^2 \\ \nabla B(x, t) \cdot \hat{n}(x)|_{\partial\Omega} &= 2k_2[C]^3 - 2k_1[A][B]^2 \\ \nabla C(x, t) \cdot \hat{n}(x)|_{\partial\Omega} &= 3k_1[A][B]^2 - 3k_2[C]^3 \end{aligned}$$

Here, \hat{n} is the unit normal to Ω . We therefore have defined a flux between the volume and the membrane Ω . Finally, we consider Ω as a 2-dimensional surface existing at the system boundary with free diffusion of C ;

$$\frac{\partial[C]}{\partial t} = D_C \Delta[C]$$

where Δ is the surface Laplacian.

PKA spatial response mirrors cAMP

PKA with full diffusion values ($\approx 10 \frac{\mu\text{m}^2}{\text{s}}$) did not follow cAMP dynamics and only elicited a single global response. We asked if this was due to AKAP patterning at the surface, which should mirror the AC profile at the surface. Adding this interaction into the model did not allow any sizable spatial gradient of PKA to develop. Recent work has suggested the PKA catalytic subunit in the presence of non-excess cAMP is effectively activated but its diffusion is restricted (**Smith et al., 2017**). By varying the diffusion constant, we found PKA activity could follow cAMP dynamics in the nanocluster and PM compartments in our computational model for restricted diffusivities (**Figure 6–figure supplement 1a**). We experimentally tested this prediction using the AKAP79-fused and PM-targeted PKA activity sensors and found that indeed PKA activity did follow the cAMP- Ca^{2+} phase relationship within the two compartments (**Figure 6–figure supplement 1b-d**). This suggests that anchored PKA holoenzyme action is much more restricted than originally anticipated.

Comparisons with experimental data

Raw FRET data (**Figure 1**) was used for model refinement of the cAMP-Ca²⁺ phase relationship. The experimental and model data were qualitatively compared against each other to preserve oscillation time, amplitude, range, and waveform. Although a quantitative calibration was not performed to map FRET ratio to cAMP concentration, we utilized the fact that these sensors are known to measure cAMP in the range of ≈0.1-10 μM to constrain our model. Voltage-gated channel sensitivities were not tuned, and only connection strengths between CaM to ACs and PDEs, which are largely less constrained in comparison, were varied. Values modified from the well-mixed model values can be found in **Appendix 1—tables 10–13**.

Model validation and predictions

The model generated predictions relating concentration perturbations (AC, PDE, etc.), disruption of patterning (AC binding disruption), and their changes to the phase of the signal. The system, once moved to the spatial model, was allowed free parameters along the six-component axis for CaM connection and cAMP production strength of ACs and PDEs. This includes the flux differential between basal and activated ACs and PDEs.

Reaction tables of modified well-mixed parameters for the spatial model

Appendix 1—table 11. cAMP reactions modified from **Appendix 1—table 3**.

#	Reaction	Reaction flux	Kinetic parameters	Ref.
S9	→ cAMP	$k_{base}([CaM \cdot AC] + [AC] + [AC_{ind}]) + k_{act}[AC^*]$	$k_{base} = 0.2 \text{ s}^{-1}$, $k_{act} = 23.55 \text{ s}^{-1}$, $AC_{ind} = 3 \times 10^{-8}$	FRET constraint
S10	cAMP →	$k_{base} \frac{[cAMP]}{[cAMP] + K_m} + k_{act} \frac{[CaM \cdot PDE] + [PDE]}{[cAMP] + K_m}$	$k_{base} = 0.6 \text{ s}^{-1}$, $K_m = 0.6 \text{ μM}$, $k_{act} = 720 \text{ s}^{-1}$	FRET constraint
S11	cAMP →	$V_{ind} \frac{[cAMP]}{[cAMP] + K_m}$	$V_{ind} = 0.25 \text{ μM} \cdot \text{s}^{-1}$, $K_m = 1.4 \text{ μM}$	FRET constraint
S12	2cAMP + R2C2 → R2C + PKA	$k_f [cAMP]^2 [R2C2] - k_r [R2C] [PKA]$	$k_f = 20 \text{ min}^{-1} \cdot \text{μM}^{-2}$, $k_r = 12 \text{ min}^{-1} \cdot \text{μM}^{-1}$	
S13	2cAMP + R2C → R2 + PKA	$k_f [cAMP]^2 [R2C] - k_r [R2] [PKA]$	$k_f = 20 \text{ min}^{-1} \cdot \text{μM}^{-2}$, $k_r = 12 \text{ min}^{-1} \cdot \text{μM}^{-1}$	

Appendix 1—table 12. Additional AKAP interactions for the spatial model.

#	Reaction	Reaction flux	Kinetic parameters	Ref
S14	AKAP + R2 → AKAP-R2	$k_f [R2] [AKAP - R2C2] - k_r [AKAP - R2]$	$k_f = 1 \text{ s}^{-1} \cdot \text{μM}^{-1}$, $k_r = 0.1 \text{ s}^{-1}$	Est.
S15	AKAP + R2C → AKAP-R2C	$k_f [R2C] [AKAP - R2C2] - k_r [AKAP - R2C]$	$k_f = 1 \text{ s}^{-1} \cdot \text{μM}^{-1}$, $k_r = 0.1 \text{ s}^{-1}$	Est.
S16	AKAP + R2C2 → AKAP-R2C2	$k_f [R2C2] [AKAP - R2C2] - k_r [AKAP - R2C2]$	$k_f = 1 \text{ s}^{-1} \cdot \text{μM}^{-1}$, $k_r = 0.1 \text{ s}^{-1}$	Est.
S17	2cAMP + AKAP-R2C2 → AKAP-R2C + PKA	$k_f [cAMP]^2 [AKAP - R2C2] - k_r [AKAP - R2C] [PKA]$	$k_f = 20 \text{ min}^{-1} \cdot \text{μM}^{-2}$, $k_r = 12 \text{ min}^{-1} \cdot \text{μM}^{-2}$	

Continued on next page

Appendix 1—table 12 continued

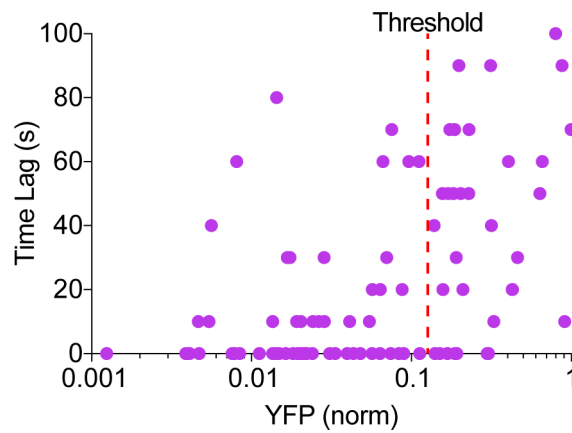
#	Reaction	Reaction flux	Kinetic parameters	Ref
S18	$2cAMP + AKAP-R2C \rightarrow AKAP-R2 + PKA$	$k_f[cAMP]^2[AKAP - R2C] - k_r[AKAP - R2][PKA]$	$k_f = 20 \text{ min}^{-1} \cdot \mu\text{M}^{-2}$, $k_r = 12 \text{ min}^{-1} \cdot \mu\text{M}^{-2}$	

Appendix 1—table 13. Initial conditions and diffusion coefficients used in the model.

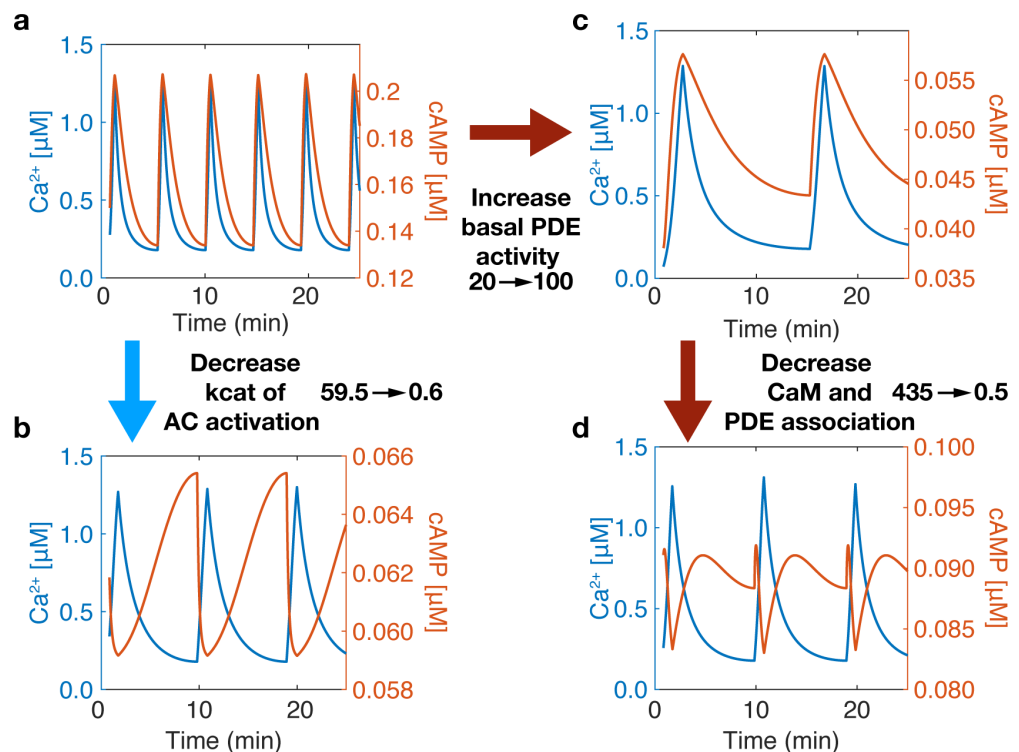
#	Species	Initial value	Diffusion	Ref.
SIC1	Ca^{2+}	0.001 μM	$100 \frac{\mu\text{m}^2}{\text{s}}$	(Donahue and Abercrombie, 1987), Est. from steady state
SIC2	CaM	2.9 μM	$10 \frac{\mu\text{m}^2}{\text{s}}$	Est. from steady state*
SIC3	Ca_2CaM	0.1 μM	$10 \frac{\mu\text{m}^2}{\text{s}}$	Est. from steady state*
SIC4	Ca_3CaM	$4 \times 10^{-3} \mu\text{M}$	$10 \frac{\mu\text{m}^2}{\text{s}}$	Est. from steady state*
SIC5	Ca_4CaM	$1 \times 10^{-2} \mu\text{M}$	$10 \frac{\mu\text{m}^2}{\text{s}}$	Est. from steady state*
SIC6	R_2	0.04 μM	$10 \frac{\mu\text{m}^2}{\text{s}}$	Est. from steady state*
SIC7	R_2C_2	0.2 μM	$10 \frac{\mu\text{m}^2}{\text{s}}$	Est. from steady state*
SIC8	PKA	0.05 μM	$0.01 \frac{\mu\text{m}^2}{\text{s}}$	Est. from steady state, diffusion fitted
SIC9	PDE1	0.9 μM	$10 \frac{\mu\text{m}^2}{\text{s}}$	Est. from steady state*
SIC10	PDE1_{act}	$1 \times 10^{-3} \mu\text{M}$	$10 \frac{\mu\text{m}^2}{\text{s}}$	Est. from steady state*
SIC11	CaMPDE1	$1 \times 10^{-3} \mu\text{M}$	$10 \frac{\mu\text{m}^2}{\text{s}}$	Est. from steady state*
SIC12	AC	$4 \times 10^{-10} \frac{\text{mol}}{\text{m}^2}$	0	Est.
SIC13	CaMAC	$0 \frac{\text{mol}}{\text{m}^2}$	0	Est.
SIC14	AC_{act}	$0 \frac{\text{mol}}{\text{m}^2}$	0	Est.
SIC15	AC_{ind}	$4 \times 10^{-10} \frac{\text{mol}}{\text{m}^2}$	$1 \frac{\mu\text{m}^2}{\text{s}}$	Est.†
SIC16	V	-60 mV	$1 \frac{\mu\text{m}^2}{\text{s}}$	Fridlyand et al., 2003; Ni et al., 2011†
SIC17	cAMP	$4 \times 10^{-6} \mu\text{M}$	$60 \frac{\mu\text{m}^2}{\text{s}}$	Agarwal et al., 2016, Est. from steady state

*For all cytosolic species without well-constrained diffusions, we used $10 \frac{\mu\text{m}^2}{\text{s}}$

†For all membrane species without well-constrained diffusions we used $1 \frac{\mu\text{m}^2}{\text{s}}$



Appendix 1—figure 1. Phase of cAMP correlates with the expression level of the AKAP79-(Ci/Ce) Epac2-camps. Scatter plot of the time lag (sec) and the YFP donor channel intensity (normalized to non-saturating maximum) for each cell expressing AKAP79-(Ci/Ce)Epac2-camps. Cells with higher expression of the probe correlated with a longer time lag, therefore a YFP intensity threshold was designated for analysis purposes.



Appendix 1—figure 2. Phase is driven by activity variability within the Ca^{2+} oscillatory regime. The phase of the system can be switched by tuning the association of CaM to sources (ACs) and sinks (PDEs). (a) At base system conditions, the system acts in an in-phase manner. (b) Decreasing the rate of Ca^{2+} association to the AC-CaM complex causes the phase to switch to out-of-phase. (c) Increasing basal PDE activity does not allow a phase switch only after decreasing PDE and CaM association rates will the system allow a phase switch (d). A phase switch is controlled by the variability in the activity of source or sink. If the sink dominates, then the system is out-of-phase. If the source dominates, the system is in-phase.