

UC Berkeley

UC Berkeley Previously Published Works

Title

Multipartite Entanglement in Rabi-Driven Superconducting Qubits

Permalink

<https://escholarship.org/uc/item/3rg7b168>

Journal

PRX Quantum, 3(4)

ISSN

2691-3399

Authors

Lu, Marie

Ville, Jean-Loup

Cohen, Joachim

et al.

Publication Date

2022-11-01

DOI

10.1103/prxquantum.3.040322

Copyright Information

This work is made available under the terms of a Creative Commons Attribution-NonCommercial License, available at <https://creativecommons.org/licenses/by-nc/4.0/>

Peer reviewed

Multipartite Entanglement in Rabi Driven Superconducting Qubits

Marie Lu,^{1,*} Jean-Loup Ville,¹ Joachim Cohen,² Alexandru Petrescu,² Sydney Schreppler,¹ Larry Chen,¹ Christian Jünger,³ Chiara Pelletti,⁴ Alexei Marchenkov,⁴ Archan Banerjee,¹ William P. Livingston,¹ John Mark Kreikebaum,³ David I. Santiago,³ Alexandre Blais,^{2,5} and Irfan Siddiqi^{1,3}

¹*Department of Physics, University of California, Berkeley, California, 94720, USA*

²*Institut Quantique and Département de Physique,*

Université de Sherbrooke, Sherbrooke, Québec, J1K 2R1, Canada

³*Applied Mathematics and Computational Research Division,*

Lawrence Berkeley National Laboratory, University of California, Berkeley, California, 94720, USA

⁴*Bleximo Corp., 701 Heinz Ave, Berkeley, CA 94710, USA*

⁵*Canadian Institute for Advanced Research, Toronto, M5G1M1 Ontario, Canada*

(Dated: July 21, 2022)

Exploring highly connected networks of qubits is invaluable for implementing various quantum algorithms and simulations as it allows for entangling qubits with reduced circuit depth. Here, we demonstrate a multi-qubit STAR (Sideband Tone Assisted Rabi driven) gate. Our scheme is inspired by the ion qubit Mølmer-Sørensen gate and is mediated by a shared photonic mode and Rabi-driven superconducting qubits, which relaxes restrictions on qubit frequencies during fabrication and supports scalability. We achieve a two-qubit gate with maximum state fidelity of 95% in 310 ns, a three-qubit gate with state fidelity 90.5% in 217 ns, and a four-qubit gate with state fidelity 66% in 200 ns. Furthermore, we develop a model of the gate that show the four-qubit gate is limited by shared resonator losses and the spread of qubit-resonator couplings, which must be addressed to reach high-fidelity operations.

INTRODUCTION

Quantum computers will enable efficient solutions to problems currently intractable for classical computers [1–4]. Among the many models of quantum computation is the gate-based quantum computer, which uses gates to act upon a register of qubits. An algorithm can be broken down into single-qubit operations and two-qubit entangling gates. However, as the leading quantum processors today are limited to 50-100 qubits and each qubit is sensitive to decoherence (often referred to as NISQ, or noisy intermediate-scale quantum, devices [5]), running algorithms with large circuit depth remains difficult. High-fidelity multi-qubit gates are therefore central for reducing circuit depth [6, 7].

Superconducting circuits are a promising platform for quantum computation, due to advances in scaling up microfabrication technology, individual qubit control and readout, and growing qubit coherence time [8, 9]. However, generating high-fidelity multi-qubit entanglement on cQED platforms, especially for three and more qubits, remains difficult as multi-qubit gates are limited by connectivity between qubits, noise in controls, and frequency

crowding[10, 11]. In particular, the connectivity of superconducting qubits is a design challenge as it is difficult to place $O(n^2)$ qubits in an area that fits $O(n)$ qubits [7]. Processors with nearest-neighbor connectivity can only use cascaded pairwise interactions to generate multi-qubit gates [12–14], which does not reduce circuit depth. In contrast, tunable qubits coupled to a common bus resonator have the advantage of all-to-all coupling and can entangle by tuning into to near resonance with each other [15]. However, tunable qubits leave a larger footprint on already crowded processors since each qubit requires an additional flux line and generally have shorter coherence times than fixed-frequency qubits, making it more difficult to scale.

To address these issues, we present the multiqubit STAR (Sideband Tone Assisted Rabi driven) gate on a superconducting quantum processor with four Rabi driven fixed-frequency qubits that are all-to-all connected through a bus resonator. We trade flux tunable qubits for Rabi dressing to harness the advantages of dynamical decoupling, reduce the footprint per qubit, and simplify fabrication restrictions. We demonstrate two-qubit entanglement with maximum state fidelity 95% (minimum 87%, average 91%), three-qubit entanglement with 90.5% state fidelity, and four-qubit entanglement with fidelity 66%. In addition, we further characterize the two-qubit gate

* Correspondence email address: marielu@berkeley.edu

using quantum process tomography [31, 32]. Moreover, we develop a model of the entangling gate as a blueprint for future scaling.

This gate is reminiscent of the trapped-ion qubit Mølmer-Sørensen gate [16–18] with a few key differences that can be traced to the distinct energy scales in superconducting circuits and trapped-ion systems. As in the original Mølmer-Sørensen scheme, we use bichromatic sidebands to engineer the interaction between the qubits, as indicated by the red and blue arrows in Fig. 1a. But while the original ion platform achieves all-to-all coupling through a shared phononic degree of freedom, we exchange this for a coplanar waveguide resonator (CPW). Next, this difference in coupling and qubit platform causes an inversion between the qubit and coupling mode energy scales when comparing the ion and transmon gates [Fig. 1b)]. For ions, the high-frequency (GHz) spin degrees of freedom σ_i are coupled to the low-frequency (MHz) vibrational mode \mathbf{a} of the ion chain. The sidebands, which are set at the sum and difference of the frequencies of these two modes, drive the spin degrees of freedom, resulting in resonant hopping terms such as $\sigma_i^\pm \mathbf{a}$. In the transmon case, the photonic mode is the highest frequency scale, around 8 GHz, similar to the qubit frequency. If we were to generate sidebands at the sum and difference frequencies of the resonator and qubit modes, we would have sidebands that are over 10 GHz apart. These sidebands, that must be sent into the shared CPW resonator, would largely be filtered out by the linewidth of the CPW resonator. Given that our resonators have kHz or MHz intrinsic linewidth, the sidebands must be close in frequency to the shared resonator such that enough power can reach the qubits, requiring a much lower qubit energy than typical values.

A key technique used in this gate that both addresses this energy scaling problem and supports its scalability is the addition of a Rabi drive on each qubit. We apply a drive to each participating qubit at its $|g\rangle \leftrightarrow |e\rangle$ transition frequency to enable a Rabi splitting and form new Rabi dressed qubits with energy levels set by the amplitude of the Rabi drive, Ω , an experimentally tunable parameter [19]. Utilizing these dressed states allows us to relax restrictions on qubit frequencies during fabrication and eliminates the need for tunable qubits. These features support scalability as it reduces the number of lines needed to address each qubit and simplifies the fabrication process. These advantages of Rabi-driven qubits have been further studied and proven to exhibit similar increased coherence properties due to dynamical decoupling in these works [20–26].

CIRCUIT QED IMPLEMENTATION

Experimental implementation details are shown in Fig. 1. The four-qubit processor in Fig. 1d displays fixed-frequency transmons that have qubit frequencies $\omega_{ge}^{0,1,2,3}/2\pi = 5.24, 5.37, 5.69, 5.48$ GHz, anharmonicity $\alpha/2\pi = -240$ MHz, and dispersive shifts to the common bus mode $\chi_{0,1,2,3}/2\pi = 380, 410, 718, 815$ KHz. The resonator frequency is $\omega_c/2\pi = 7.82$ GHz and has a linewidth κ of 180 KHz. This value is dominated by the internal loss of the resonator, as the designed κ_{ext} is only 20 KHz. The qubit transitions relevant for the gate are the Rabi split states $|\pm\rangle = (|e\rangle \pm |g\rangle)/\sqrt{2}$ generated by applying drives at each qubit frequency, ω_{ge}^k . These are the states displayed in the two-qubit level diagram in Fig. 1a, where n labels the photon occupation of the shared resonator. Red and blue sideband tones are applied to the resonator, with frequencies $\omega_r = \omega_c - \Omega_R + \delta$ and $\omega_b = \omega_c + \Omega_R + \delta$. Here, δ is the common detuning of the sideband tones. As indicated by the thick black arrows in Fig. 1a, these sidebands drive two-photon transitions that result in population swaps between $|++, n\rangle$ and $|--, n\rangle$ if the qubits are prepared in either $|++, n\rangle$ or $|--, n\rangle$. We note that one may also initialize the qubits in $|-, n\rangle$ and generate population swaps with $|+, n\rangle$.

In the frame rotating at the qubit frequencies and at $\omega_c + \delta$ for an n -qubit gate, the dispersive Hamiltonian describing the system is given by [27]

$$\mathbf{H}_I = -\delta \mathbf{a}^\dagger \mathbf{a} + \sum_{k=1}^n (\Omega_R/2) \sigma_{x_k} - \chi_k \sigma_{z_k} \mathbf{a}^\dagger \mathbf{a} + \mathbf{H}_{sb}(t). \quad (1)$$

Here, \mathbf{a} is the annihilation operator of the resonator, and σ_{l_k} , $l = x, y, z$, are the Pauli matrices of qubit k . The effect of the sideband term $\mathbf{H}_{sb}(t)$ acting on the resonator mode is to displace the field of the resonator such that $\mathbf{a} = \mathbf{d} + \alpha(t)$, with $\alpha(t) = \sqrt{2\bar{n}} \cos(\Omega_R t + \varphi_\Delta)$, where \bar{n} is the mean resonator photon number due to the two sideband tones, and φ_Δ is the phase difference of the two tones. After performing the displacement transformation and going into the qubit frame at the Rabi frequency [please see Supplement for details], the Hamiltonian reduces to

$$\mathbf{H}_R = -\delta \mathbf{d}^\dagger \mathbf{d} - 2\sqrt{2\bar{n}} \chi \mathbf{J}_{zy}^{\varphi_\Delta} (\mathbf{d} + \mathbf{d}^\dagger) + \mathbf{H}_{err}, \quad (2)$$

where $\mathbf{J}_{\varphi_\Delta} = \cos(\varphi_\Delta) \mathbf{J}_z - \sin(\varphi_\Delta) \mathbf{J}_y$, $\mathbf{J}_l = \sum_k \sigma_{l_k}/2$, $l = x, y, z$ are the generalized spin operators, and $\mathbf{H}_{err} = \mathbf{A}_1 e^{i\Omega_R t} + \mathbf{A}_1 e^{2i\Omega_R t} + \mathbf{h.c}$ are spurious oscillating terms [25]. The effect of these terms can be neglected in the

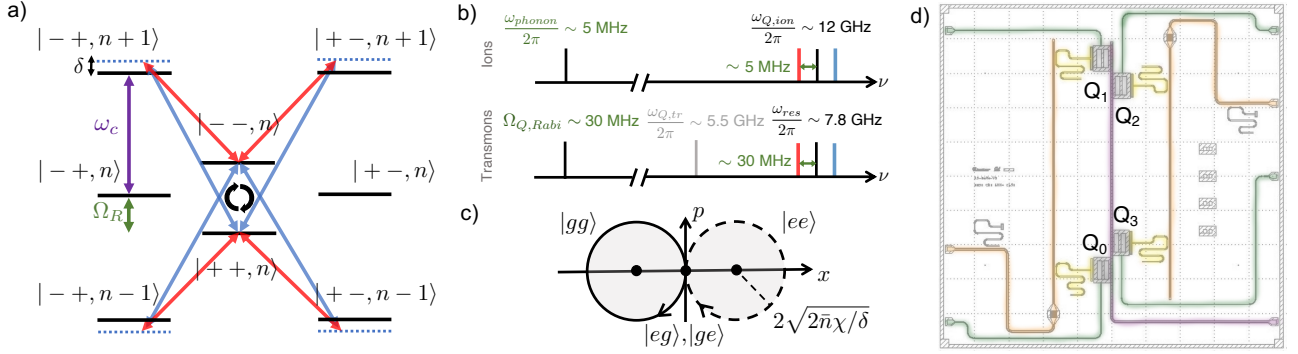


Figure 1. a) **Experimental implementation on fixed frequency transmons.** Energy level diagram for the Rabi driven qubit states with n photons in the resonator and the sidebands at frequencies ω_r and ω_b . Red and blue sidebands drive two photon transitions that generate a population swap between the $| - -, n \rangle$ and $| + +, n \rangle$ levels. b) Different energy scales used in the gate implementation. Top diagram shows the relevant energies for ion qubits, and the bottom shows the implementation for Rabi driven qubits. c) Trajectories in the \mathbf{x}, \mathbf{p} plane of the resonator conditioned on the undriven qubit states. The black dots correspond to the displaced vacuums for the corresponding colored states (eigenvalues of α). During the course of the gate, the resonator makes a circle in phase space, entangling and subsequently with the coupled qubits at a rate $1/\delta$. d) Chip design with qubit control lines in green, shared resonator in purple ($\omega_c/2\pi = 7.82$ GHz), readout resonators in yellow ($\omega_{RO}^k/2\pi = 6.4, 6.5, 6.8, 6.6$ GHz), and purcell filters in orange. The 4 transmon qubits are the grey rectangles just off of the shared resonator ($\omega_{ge}^k = 5.24, 5.37, 5.69, 5.48$ GHz).

limit of large Rabi frequency, $\delta \sim \chi\sqrt{\bar{n}} < \chi\bar{n} \ll \Omega_R$. In this parameter regime, the Hamiltonian of Eq. (2) can be mapped to the Hamiltonian originally proposed by Mølmer and Sørensen in the context of trapped ions.

Here, we give a brief review of the working principle of the STAR gate. During the gate, the qubits entangle with the resonator field, resulting in a non-trivial operation on the qubits $U = e^{i\frac{\pi}{2}\mathbf{J}_{\varphi\Delta}^2}$. The origin of this non-trivial phase comes from the qubit-state-dependent paths that the resonator describes in phase-space. To see this, one can cast the Hamiltonian of Eq. (2) in the form $\mathbf{H}_R = -\delta(\mathbf{d}^\dagger - \alpha^*)(\mathbf{d} - \alpha) - \alpha^2$, with $\alpha = 2\chi\sqrt{2\bar{n}}\mathbf{J}_{\varphi\Delta}/\delta$. The first term describes a harmonic oscillator of frequency δ centered on the qubit-state dependent α , while the second term $\alpha^2 = 8\bar{n}\chi^2\mathbf{J}_{\varphi\Delta}^2/\delta^2$ describes a qubit-qubit interaction term. Note that the two terms commute. Initializing the resonator field \mathbf{d} in the vacuum, the field state remains in a coherent state and revolves around the qubits-dependent vacuum positions α , as depicted in Fig. 1b. After one period of evolution $T = 2\pi/\delta$, the field state comes back to its initial position (the vacuum), and the qubits and the resonator disentangle. The qubits undergo a non trivial evolution U generated by the last term $-\alpha^2$, with $U = \exp[i\pi(8\bar{n}\chi^2/\delta^2)\mathbf{J}_{\varphi\Delta}^2]$. When $\delta = 2\sqrt{\bar{n}}\chi$, this implements the entangling gate $U = e^{i\frac{\pi}{2}\mathbf{J}_{\varphi\Delta}^2}$. With two qubits, U takes the simple form $U = e^{i\frac{\pi}{2}\sigma_{zy,1}^{\varphi\Delta}\sigma_{zy,2}^{\varphi\Delta}}$ up to a global

phase factor, where $\sigma_{zy,k}^{\varphi\Delta} = \cos(\varphi\Delta)\sigma_{z_k} - \sin(\varphi\Delta)\sigma_{y_k}$. During the gate, the entanglement of the qubits with the resonator makes the gate fidelity sensitive to the resonator photon loss channel. In addition to $\chi\sqrt{\bar{n}} \ll \Omega_R$, we therefore require that the gate rate is much larger than κ , i.e $\kappa \ll \chi\sqrt{\bar{n}}$.

To implement the gate, we begin by calibrating the parameters most important to our system: χ , \bar{n} , and κ . The combination of χ and \bar{n} sets the gate time and is used to calculate the sideband detuning δ_{sb} necessary for the gate [28]. Whereas κ , the decay rate of photons from the shared resonator, sets a limit on the fidelity of the gate. We discuss this below when we analyse the sources of errors. The pulse sequence shown in Fig. 2a for the full gate shows a Rabi drive applied to each participating qubit. We rely on the single Rabi driven qubit version of this pulse sequence to extract all three parameters. We point out that if one sets the state preparation and tomography pulses as $Y_{\frac{\pi}{2}} = e^{-i\frac{\pi}{4}\sigma_y}$, the gate pulse sequence is the classic spinlocking sequence, done on multiple qubits in parallel under the presence of sidebands [20]. We use this protocol as a form of chip and Hamiltonian characterization.

We provide an overview of our characterization procedure in Fig. 2. The level diagram for the single qubit interaction with sidebands is shown in Fig. 2b). We apply a state-preparation pulse to initialize the qubit(s) of

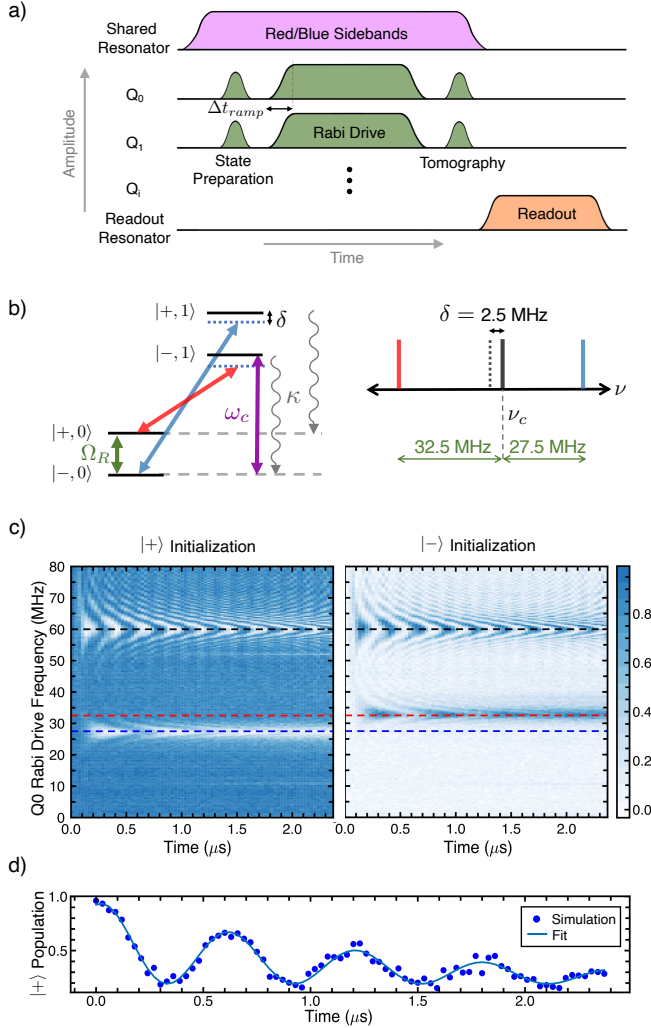


Figure 2. **Hamiltonian characterization and gate calibration.** a) Pulse sequence for n -qubits gate. The sequence for single qubit calibrations and Hamiltonian spectroscopy is identical to the pulse sequence shown with $n=1$. b) Energy level diagram for a Rabi driven qubit and sidebands. κ is the dissipation out of the shared resonator. The choice of qubit initialization pulse determines whether κ will either pin the qubit state in $|+\rangle$ or $|-\rangle$. Sidebands are $2\Omega_R = 60\text{MHz}$ apart with an overall 2.5 MHz detuning down relative the shared resonator frequency. c) Spectroscopy of the Hamiltonian for a single qubit. Spectroscopy is performed by repeating the single-qubit pulse sequence in a) with fixed sideband frequencies while sweeping the Rabi drive frequency, which changes the energy level splittings shown in b). With the sidebands set 60 MHz apart, the gate requires that the qubit Rabi drive be at 30 MHz , which is exactly in between the resonance features indicated by the red and blue dashed lines. d) Cross-section of c) for $|+\rangle$ initialization at the blue dotted line. The continuous blue line is a fit of the data.

interest, followed by a Rabi drive around the x axis to bring the qubits close to resonance with the sidebands. For instance in Fig. 2c, we sweep Ω_R with sideband frequencies fixed at $\nu_{res} + \Omega_R - \delta$ and $\nu_{res} - \Omega_R - \delta$ for $\Omega_R = 30\text{MHz}$ and detuning $\delta = 2.5\text{ MHz}$. The qubit is in resonance with the red (blue) sideband when $\Omega_R = 32.5$ (27.5) MHz . When Ω_R is far from resonance, the dynamics is set by a $T_{1,\rho}$ limited decay of the driven qubit [20], where $T_{1,\rho}$ is the dressed frame analog of T_1 qubit relaxation. In contrast, when Ω_R is close to resonance, excitation swaps will occur in addition to the $T_{1,\rho}$ limited decay.

We use excitation swaps between the Rabi driven qubit and resonator combined with a Stark shift measurement to calibrate χ and \bar{n} . Where $\chi\bar{n} \gg \kappa$, these exchanges occur at a faster time scale than the loss out of the shared resonator. The red (blue) sideband drives population swaps between $|+, 0\rangle$ ($|-, 0\rangle$) and $|-, 1\rangle$ ($|+, 1\rangle$), shown in Fig. 2d, which is a cutaway of the full chevron in Fig. 2c for Q_0 . The rate of these oscillations is set by $\chi\sqrt{\bar{n}}$, and the observed exponential decay is set by κ , cooling the driven qubit to either $|+\rangle$ or $|-\rangle$ [28]. This contrasts with previous works studying the resonance features in the low χ/κ that show similar cooling effects without population swaps [28–30]. The frequency of the oscillations in Fig. 2d combined with the Stark shift of the qubit - which has a $\chi\bar{n}$ dependence - for different sidebands power allow us to calibrate χ and \bar{n} . We explain this in detail in the Supplement, along with other calibration measurements for the Rabi drive power Ω_i and the sideband phase. We note that there is an additional resonance feature at 60 MHz , marked by the black dotted line in Fig. 2c. These are generated by higher order terms in the Hamiltonian due to the presence of the Rabi drive. In general, as discussed later, $\omega_b - \omega_r$ should be maximized as to push this higher frequency resonance away from the Rabi drive frequencies for the gate.

GATE CHARACTERIZATION

Next, we study the two-qubit population evolution over time to extract the gate time. To perform the gate, we implement the full pulse sequence in Fig. 2a on any desired subset of our qubits. We use Q_0 and Q_1 , two qubits with the most similar shared resonator dispersive couplings χ . The results for our choice of $|++\rangle$ initial state are summarized in Fig. 3. Maximum entanglement occurs when the $|+-\rangle$ and $| -+\rangle$ populations reach a minimum and the $|++\rangle$ and $| --\rangle$ populations cross, as indicated

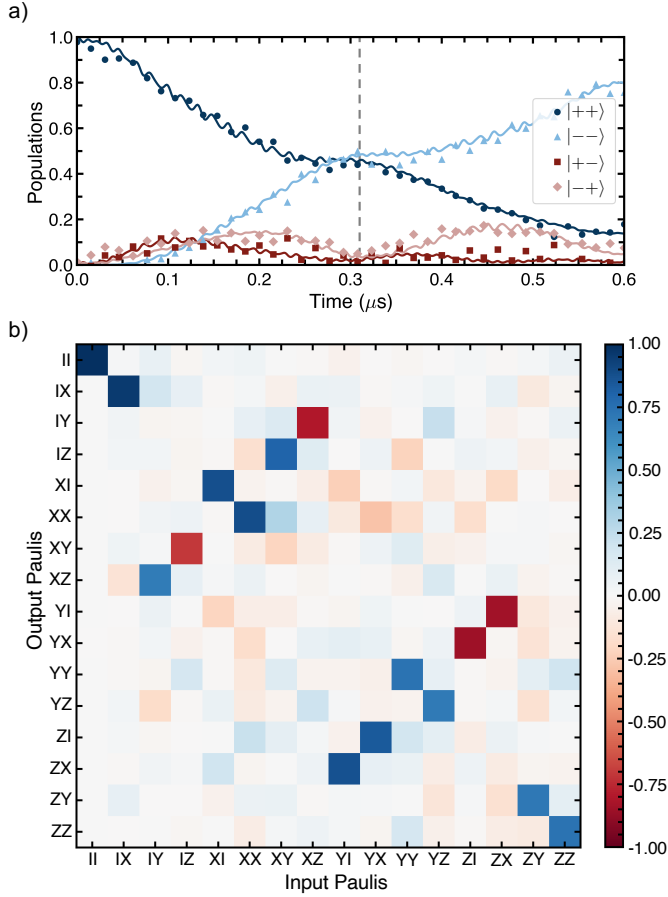


Figure 3. **Characterizing two-qubit gate.** a) Gate evolution for two qubits. Experimental data (points) together with simulations of Eq. (A.11) (solid lines) with $\Omega_0/2\pi = 30.55$ MHz, $\Omega_1/2\pi = 29.92$ MHz, $\chi_0/2\pi = 380$ KHz, $\chi_1/2\pi = 410$ KHz, $\kappa = 180$ KHz. b) PTM of the experimental data in the $|g/e\rangle$ basis, at $T_{gate} = 310$ ns, obtained measuring 16 different initial states. The process fidelity is 81.6%. The average fidelity to the target bell states 91.8%. The solid lines that fit each population are from simulations.

by the vertical dashed line in Fig. 3a. The gate time at that point is 310 ns, which refers to the length of the Rabi drive applied to each qubit. We prepare each of the 4 Bell states and perform state tomography at that gate time. The state fidelity [19], defined as

$$F = \sqrt{\sqrt{\rho}\sigma\sqrt{\rho}}, \quad (3)$$

ranges from 87% to 95% with an average of 91%.

We further characterize our gate using quantum process tomography (QPT) [31, 32], which is achieved by

preparing 16 different input states and performing state tomography on each output state. A convenient set of input states that spans the two-qubit subspace is $\{|+\rangle, |-\rangle, |g\rangle, |i-\rangle\} \otimes \{|+\rangle, |-\rangle, |g\rangle, |i-\rangle\}$, where $|i-\rangle = (|+\rangle - i|-\rangle)/\sqrt{2}$. The measurement basis is chosen as $\sigma_m \otimes \sigma_n$ where $m, n = 0, x, y, z$, and $\sigma_0 = I$. Since we measure the qubits in the σ_z basis, we apply single qubit tomographic pulses to measure the expectation values of $\sigma_i \otimes \sigma_j$. We present our results as a Pauli Transfer Matrix in Fig. 3b, which maps input Pauli state vectors to output Pauli state vectors. We then perform QPT on the two-qubit entangling interaction with process fidelity of 81.6% between qubits 0 and 1. The average state fidelity of all 16 initial states is 91.8%. We note that the qubit Rabi drive adds a global phase in the Rabi driven qubit frame that we unwind using techniques described in the Supplement, resulting in the PTM shown. We also perform QPT on the identity operation with process fidelity 93.5% as a baseline check of state preparation and measurement (SPAM) errors (see Fig. 10 in Supplements).

The most important feature of the gate is its scalability, which we demonstrate by generating a three-qubit GHZ state on Q_0, Q_1, Q_2 :

$$\Psi_{\text{GHZ}} = \frac{|ggg\rangle + |eee\rangle}{\sqrt{2}}. \quad (4)$$

We note here that for odd numbers of qubits, the Hamiltonian allows us to generate entanglement in either the $|\pm\rangle$ basis or directly in the $|g/e\rangle$ basis, depending on the initial state and sideband phase. Given that the two bases have a direct mapping between them, we choose an initial state and sideband phase combination that directly entangles in the $|g/e\rangle$ basis for simplicity. We use a $Y_{\pi/2}$ pulse to prepare each qubit in the $|+\rangle$ state and then apply a σ_x Rabi drive to each qubit for 217 ns. Using individual qubit pulses to do state tomography, we find state fidelity 90.5%, similar to our two qubit fidelities. The density matrix is shown in Fig. 4. We note that the three-qubit gate time is faster than the two-qubit gate time because the speed is proportional to the average χ_i and \bar{n} . We used the same sideband power for both gates, but the third added qubit had a much higher coupling than the first two qubits, thus raising the gate speed.

Finally, we attempted 4-qubit GHZ state preparation and achieved state fidelity 66% in 200 ns. The density matrix is shown in the Supplement Fig. 6. Similar to before, the gate time is even shorter because the final added qubit has the highest χ of all qubits on our processor. The 4-qubit fidelity is mainly limited by the large spread in χ and crosstalk between Q_2 and Q_3 . The Q_3 qubit fre-

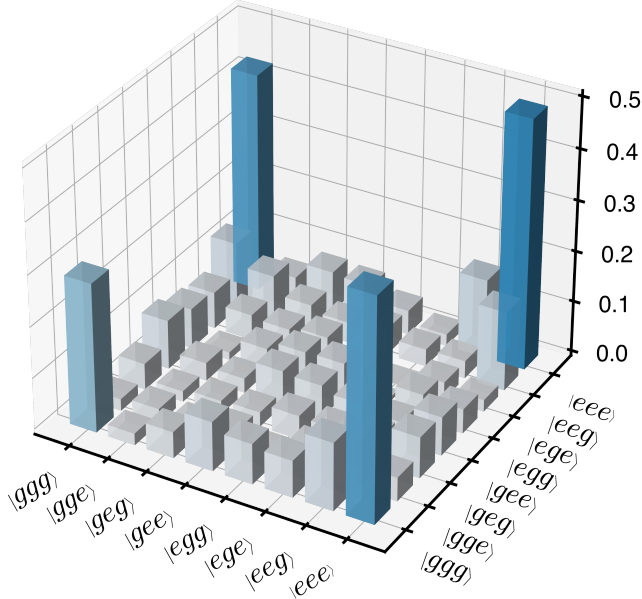


Figure 4. **Three-qubit entanglement.** Density matrix for three qubits measured at gate time of 217 ns. The bars represent the amplitude of the density matrix elements. We prepare the qubits in $|+++ \rangle$ state and use sideband phase calibrated to be 180 degrees offset from the value used for the two-qubit interactions such that we entangle directly in the bare qubit basis. Note here that the qubit states are labeled with $|g/e \rangle$ rather than $|\pm \rangle$. Entanglement in the \pm basis can be done by preparing in the $|i-\rangle$ state and using the same sideband phase as in the 2 qubit measurements. We chose this for convenience.

quency is very close to the $e \rightarrow f$ transition frequency for Q_2 . When both qubits are Rabi driven, as during the gate, we see significant f state population for Q_2 . To mitigate this, we had to lower Ω_R for each qubit to 20 MHz, which further limits fidelity. We discuss this in our error analysis.

DISCUSSION AND ERRORS

We now turn to a study of the following sources of infidelity: state preparation and measurement (SPAM) errors, shared resonator decay (κ), spread in qubit-shared resonator couplings ($\Delta\chi$), δ calibration errors, pulse shaping, and the effects of a lower Rabi drive rate (Ω_R). Each error listed here is included in our simulations aside from SPAM errors.

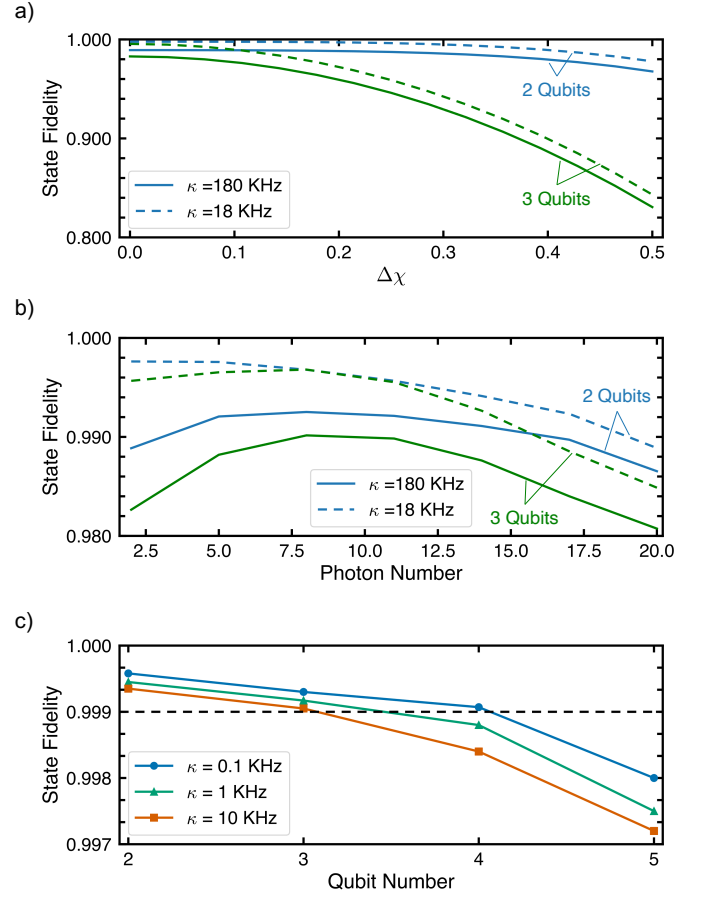


Figure 5. **Error analysis using simulations of Eq. (A.11)** a) For a system composed of two (blue) or three (green) qubits, the fidelity of the gate is shown as a function of $\Delta\chi$. The two different styles of lines represent different κ values. We exclude qubit in order to isolate the contribution of error due to $\Delta\chi$ and use the average of the $\chi_{av}/2\pi = 500$ KHz. b) State fidelity as a function of the mean photon number \bar{n} . A higher photon number raises the gate speed which helps mitigate the effect of lifetimes but also raises the contribution of counter rotating terms that cause the fidelity to saturate at approximately 10 photons. c) Scaling of entanglement fidelity as function of N , the number of qubits, for the best possible achievable chip. The black dashed line marks the 0.999 fidelity threshold. We set $\Omega_R = 150$ MHz and $\chi_k = 1$ MHz while varying κ . All three figures take qubit lifetimes to the industry best values.

The first major source of infidelity is due to state preparation and measurement (SPAM) error. Process tomography of the identity process resulted in process fidelity of 93.5%. Due to the nonzero κ of the shared resonator, we start the sideband pulse before the state preparation pulse and perform all qubit operations, including the tomogra-

phy pulses, under the presence of sidebands. However, the presence of sidebands decreases our qubit lifetimes and pulse quality (see Supplement).

Assuming no SPAM errors, simulations based on Eq. (A.11) (details found in the Supplementary Materials) suggest κ as leading sources of error (a complete summary of simulated accumulated error can be found in Table II). The effect of κ is shown in the decay of oscillations in Fig. 2d. During the course of the gate, the resonator makes a circle in phase space (Fig. 1c) and is populated with maximal photon population $\bar{n} = 0.5$ as the qubits exchange excitations with the resonator. This allows the qubits to each simultaneously entangle and then disentangle with the resonator, leaving the qubits entangled with one other. However, while the resonator is populated, photons may decay from the resonator. We have designed the external κ of the resonators to minimize the loss of photons during the gate. As such, the resonator loss is dominated by internal loss.

A second source of error that becomes more important with increasing qubit number is the spread of cross-Kerr couplings, $\Delta\chi$, between the qubits. We define $\Delta\chi = \frac{\max(\chi) - \min(\chi)}{\text{avg}(\chi)}$. Our simulations show that for a two qubit gate, the contribution of $\Delta\chi$ to the infidelity is overshadowed by κ . However, for a three-qubit gate, $\Delta\chi$ carries a greater weight. To verify this experimentally, we measure the two-qubit state fidelity between two qubits (Q_0, Q_2) that have the largest $\Delta\chi$ among the three qubits used for our multi-qubit gate. We obtain a state fidelity of 93% for preparing $\frac{|++\rangle + |--\rangle}{\sqrt{2}}$, which is very similar to maximum fidelities observed between Q_0 and Q_1 . However, while the three-qubit gate uses the same qubits as in our two-qubit experiments, we see a drop in state fidelity as $\Delta\chi$ as a larger effect for increasing numbers of qubits. This takes even greater effect for the four-qubit gate, as Q_2 and Q_3 have almost twice the coupling strength as Q_0 and Q_1 . We note that while the fidelity does strongly depend on $\Delta\chi$, the couplings on this chip were anomalies due to design and fabrication errors and standard fabrication techniques should allow for $\Delta\chi$ values below 15%.

To further describe the effects of κ and $\Delta\chi$, we again performed simulations with Eq. (A.11) as a function of the parameters of interest. We summarize the effects of κ and $\Delta\chi$ in Fig. 5. In Fig. 5a and b, we use resonator loss values that are similar that on our sample and show fidelity dependence on key system parameters. We take qubit lifetimes to be infinite in order to isolate the effect of each parameter. Fig. 5a shows the fidelity as a function of $\Delta\chi$, κ , and the number of qubits. Fig. 5b shows

expected fidelities as a function of the sideband power. While increasing \bar{n} raises fidelities at first because it decreases the gate time compared to loss rates, increased \bar{n} also widens the $2\Omega_R$ feature shown in Fig. 2c, increasing the contribution of spurious counter-rotating terms in the Hamiltonian. Our simulations (Fig. 5c) suggest that for leading fabrication techniques that produce resonators with quality factors over 5 million and leading qubit coherence times [33, 34], the gate can be implemented at or above the fault tolerant threshold of 0.999 fidelity for up to four qubits. Furthermore, the STAR gate can be useful for running algorithms on NISQ processors for even higher numbers of qubits.

While κ and $\Delta\chi$ are the main error sources that we are able to characterize experimentally, there are a few additional contributions that will be important to consider to optimize for the best attainable fidelities. First, we are currently not verifying how well the qubits disentangle from the shared resonator at the gate time. Ideally, a proper calibration of the δ —obtained from our measurements of χ and \bar{n} —should ensure this, but because we do not measure the state of the resonator, there is the possibility of an inaccurate calibration. As an example, from simulations, a miscalibration of δ by 10% on a two-qubit gate would add an additional 1.3% error. Second is the finite ramp time used in the shape of the Rabi pulse. This ramp is necessary to keep the spectrum of the pulse narrow in frequency space. However, as the drive ramps up to the required Rabi frequency, it crosses a resonance with the sidebands. These are the same resonances used in the spinlocking measurements to calibrate our chip parameters in Fig. 2. These spurious interactions can be mitigated using pulse optimization techniques [35, 36].

The final source of error is Rabi drive rate. As shown in the chevron plot in Fig. 2c, there is a feature at frequency 2Ω marked by the black dotted line, at twice the Rabi drive frequency typically used for the gate at Ω_R . The frequency of the oscillations of the $2\Omega_R$ feature are at $2 \times 30\text{MHz} = 60\text{MHz}$, and the width of the oscillations is set by $\chi\bar{n}$. For higher sideband powers and lower Rabi drive frequencies, the oscillations generate counter-rotating terms in the Hamiltonian that interfere with gate dynamics. In our numerical simulations, the effects on the gate can be seen in Fig. 14 in the Supplement (comparing 30 and 60 MHz Rabi drive gates). The fidelity of the two-qubit gate would benefit from increasing the Rabi drive to over 100 MHz, or equivalently, adding an extra cancellation tone to offset the effects of the spurious feature.

CONCLUSIONS AND OUTLOOK

In summary, we demonstrate a scalable maximally entangling gate on an all-to-all connected fixed frequency transmon processor between two, three, and four qubits. The gate is generated through bichromatic microwaves and Rabi drives applied to each participating qubit. The Rabi drive provides the advantages of reducing limitations on qubit-qubit detunings during fabrication, dynamically decoupling from noise, and allowing us to entangle any subset of qubits on the chip. Finally, for the three-qubit gate, we are able to choose whether to entangle the qubits in the Rabi dressed basis or the original qubit basis based on the sideband phase and preparation state, without the need for additional qubit pulses to map between bases. Looking forward, the gate is most limited by photon loss from the shared resonator for four and more qubits. Applying state of the art fabrication techniques will yield multi-partite gates that exceed the 0.999 fidelity threshold for up to four qubits. At the same time, for gates with higher numbers of qubits, it is also worth exploring this scheme on parametrically coupled chips where can perform the gate in a far-detuned regime, thus eliminating the κ loss factor.

ACKNOWLEDGEMENTS

We would like to thank Lucas Buchmann, Felix Motzoi, Kyunghoon Lee, Ravi Naik, Bradley Mitchell, for valuable discussions. This work was undertaken in part thanks to funding from NSERC, the Canada First Research Excellence Fund, the Ministère de l'Économie et de l'Innovation du Québec, the U.S. Army Research Office under Grant No. W911NF-18-1-0411, the U.S. Department of Energy, Office of Science, National Quantum Information Science Research Centers and Quantum Systems Accelerator, and the L'Oréal USA For Women in Science Fellowship Program.

-
- [1] J. M. Chow, J. M. Gambetta, A. D. Córcoles, S. T. Merkel, J. A. Smolin, C. Rigetti, S. Poletto, G. A. Keefe, M. B. Rothwell, J. R. Rozen, and et al., *Physical Review Letters* **109** (2012), 10.1103/physrevlett.109.060501.
 [2] L. K. Grover, *Phys. Rev. Lett.* **79**, 325 (1997).
 [3] N. Brunner, D. Cavalcanti, S. Pironio, V. Scarani, and S. Wehner, *Rev. Mod. Phys.* **86**, 419 (2014).

- [4] L. García-Álvarez, U. Las Heras, A. Mezzacapo, M. Sanz, E. Solano, and L. Lamata, *Scientific Reports* **6**, 27836 (2016).
 [5] J. Preskill, *Quantum* **2**, 79 (2018).
 [6] K.-A. Brickman, P. C. Haljan, P. J. Lee, M. Acton, L. Deslauriers, and C. Monroe, *Phys. Rev. A* **72**, 050306 (2005).
 [7] D. Maslov and Y. Nam, *New Journal of Physics* **20**, 033018 (2018).
 [8] M. Kjaergaard, M. E. Schwartz, J. Braumüller, P. Krantz, J. I.-J. Wang, S. Gustavsson, and W. D. Oliver, *Annual Review of Condensed Matter Physics* **11**, 369 (2020), <https://doi.org/10.1146/annurev-conmatphys-031119-050605>.
 [9] A. Nersisyan, S. Poletto, N. Alidoust, R. Manenti, R. Renzas, C.-V. Bui, K. Vu, T. Whyland, Y. Mohan, E. A. Sete, S. Stanwyck, A. Bestwick, and M. Reagor, *2019 IEEE International Electron Devices Meeting (IEDM)*, , 31.1.1 (2019).
 [10] P. Krantz, M. Kjaergaard, F. Yan, T. P. Orlando, S. Gustavsson, and W. D. Oliver, *Applied Physics Reviews* **6**, 021318 (2019), <https://doi.org/10.1063/1.5089550>.
 [11] M. Kjaergaard, M. E. Schwartz, J. Braumüller, P. Krantz, J. I.-J. Wang, S. Gustavsson, and W. D. Oliver, *Annual Review of Condensed Matter Physics* **11**, 369 (2020), <https://doi.org/10.1146/annurev-conmatphys-031119-050605>.
 [12] G. J. Mooney, C. D. Hill, and L. C. Hollenberg, *Scientific reports* **9**, 1 (2019).
 [13] M. Gong, M.-C. Chen, Y. Zheng, S. Wang, C. Zha, H. Deng, Z. Yan, H. Rong, Y. Wu, S. Li, F. Chen, Y. Zhao, F. Liang, J. Lin, Y. Xu, C. Guo, L. Sun, A. D. Castellano, H. Wang, C. Peng, C.-Y. Lu, X. Zhu, and J.-W. Pan, *Phys. Rev. Lett.* **122**, 110501 (2019).
 [14] K. X. Wei, I. Lauer, S. Srinivasan, N. Sundaresan, D. T. McClure, D. Toyli, D. C. McKay, J. M. Gambetta, and S. Sheldon, *Phys. Rev. A* **101**, 032343 (2020).
 [15] C. Song, K. Xu, W. Liu, C.-p. Yang, S.-B. Zheng, H. Deng, Q. Xie, K. Huang, Q. Guo, L. Zhang, P. Zhang, D. Xu, D. Zheng, X. Zhu, H. Wang, Y.-A. Chen, C.-Y. Lu, S. Han, and J.-W. Pan, *Phys. Rev. Lett.* **119**, 180511 (2017).
 [16] A. Sørensen and K. Mølmer, *Phys. Rev. Lett.* **82**, 1971 (1999).
 [17] A. Sørensen and K. Mølmer, *Phys. Rev. A* **62**, 022311 (2000).
 [18] K. Mølmer and A. Sørensen, *Phys. Rev. Lett.* **82**, 1835 (1999).
 [19] M. Nielsen and I. Chuang, *Quantum Computation and Quantum Information* (Cambridge University Press, 2000).
 [20] F. Yan, S. Gustavsson, J. Bylander, X. Jin, F. Yoshihara, D. G. Cory, Y. Nakamura, T. P. Orlando, and W. D. Oliver, *Nature Communications* **4** (2013), 10.1038/ncomms3337.
 [21] F. Yan, D. Campbell, P. Krantz, M. Kjaergaard, D. Kim, J. L. Yoder, D. Hover, A. Sears, A. J. Kerman, T. P.

- Orlando, and et al., *Physical Review Letters* **120** (2018), 10.1103/physrevlett.120.260504.
- [22] Y. Sung, A. Vepsäläinen, J. Braumüller, F. Yan, J. I.-J. Wang, M. Kjaergaard, R. Winik, P. Krantz, A. Bengtsson, A. J. Melville, and et al., *Nature Communications* **12** (2021), 10.1038/s41467-021-21098-3.
- [23] U. von Lüpke, F. Beaudoin, L. M. Norris, Y. Sung, R. Winik, J. Y. Qiu, M. Kjaergaard, D. Kim, J. Yoder, S. Gustavsson, and et al., *PRX Quantum* **1** (2020), 10.1103/prxquantum.1.010305.
- [24] U. Vool, S. Shankar, S. O. Mundhada, N. Ofek, A. Narla, K. Sliwa, E. Zalus-Geller, Y. Liu, L. Frunzio, R. J. Schoelkopf, S. M. Girvin, and M. H. Devoret, *Phys. Rev. Lett.* **117**, 133601 (2016).
- [25] A. Eddins, S. Schreppler, D. M. Toyli, L. S. Martin, S. Hacothen-Gourgy, L. C. G. Govia, H. Ribeiro, A. A. Clerk, and I. Siddiqi, *Phys. Rev. Lett.* **120**, 040505 (2018).
- [26] L. Viola and S. Lloyd, *Phys. Rev. A* **58**, 2733 (1998).
- [27] A. Blais, R.-S. Huang, A. Wallraff, S. M. Girvin, and R. J. Schoelkopf, *Phys. Rev. A* **69**, 062320 (2004).
- [28] K. W. Murch, U. Vool, D. Zhou, S. J. Weber, S. M. Girvin, and I. Siddiqi, *Physical Review Letters* **109** (2012), 10.1103/physrevlett.109.183602.
- [29] C. Aron, M. Kulkarni, and H. E. Türeci, *Phys. Rev. A* **90**, 062305 (2014).
- [30] M. E. Kimchi-Schwartz, L. Martin, E. Flurin, C. Aron, M. Kulkarni, H. E. Tureci, and I. Siddiqi, *Phys. Rev. Lett.* **116**, 240503 (2016).
- [31] I. L. Chuang and M. A. Nielsen, *Journal of Modern Optics* **44**, 2455 (1997).
- [32] J. F. Poyatos, J. I. Cirac, and P. Zoller, *Phys. Rev. Lett.* **78**, 390 (1997).
- [33] M. V. P. Altoé, A. Banerjee, C. Berk, A. Hajr, A. Schwartzberg, C. Song, M. A. Ghadeer, S. Aloni, M. J. Elowson, J. M. Kreikebaum, E. K. Wong, S. Griffin, S. Rao, A. Weber-Bargioni, A. M. Minor, D. I. Santiago, S. Cabrini, I. Siddiqi, and D. F. Ogletree, “Localization and reduction of superconducting quantum coherent circuit losses,” (2020), arXiv:2012.07604 [quant-ph].
- [34] A. P. M. Place, L. V. H. Rodgers, P. Mundada, B. M. Smitham, M. Fitzpatrick, Z. Leng, A. Premkumar, J. Bryon, A. Vrajitoarea, S. Sussman, G. Cheng, T. Madhavan, H. K. Babla, X. H. Le, Y. Gang, B. Jäck, A. Gynis, N. Yao, R. J. Cava, N. P. de Leon, and A. A. Houck, *Nature Communications* **12**, 1779 (2021).
- [35] M. Werninghaus, D. J. Egger, F. Roy, S. Machnes, F. K. Wilhelm, and S. Filipp, *npj Quantum Information* **7**, 14 (2021).
- [36] D. Dong, C. Wu, C. Chen, B. Qi, I. R. Petersen, and F. Nori, *Scientific Reports* **6**, 36090 (2016).
- [37] J. Gambetta, A. Blais, D. I. Schuster, A. Wallraff, L. Frunzio, J. Majer, M. H. Devoret, S. M. Girvin, and R. J. Schoelkopf, *Physical Review A* **74** (2006), 10.1103/physreva.74.042318.
- [38] C. Rigetti, J. M. Gambetta, S. Poletto, B. L. T. Plourde, J. M. Chow, A. D. Córcoles, J. A. Smolin, S. T. Merkel, J. R. Rozen, G. A. Keefe, and et al., *Physical Review B* **86** (2012), 10.1103/physrevb.86.100506.
- [39] S. E. Nigg, H. Paik, B. Vlastakis, G. Kirchmair, S. Shankar, L. Frunzio, M. H. Devoret, R. J. Schoelkopf, and S. M. Girvin, *Phys. Rev. Lett.* **108**, 240502 (2012).

Error Term	Infidelity (2-qubits)	Infidelity (3-qubits)
$\Omega = 30$ MHz	0.14%	0.27%
$\kappa = 180$ KHz	1.7%	1.9%
$\Delta\chi$	2.14%	6.8%
Qubit lifetimes	2.7%	7.5%
δ_{sb} miscalibration by 10%	4%	11%

Table I. Accumulated infidelity with each added term, descending, using parameter values that are currently found on our chip.

Supplementary Material

Calibration of χ and \bar{n} .

We use the combination of two measurements to calibrate the coupling strength of the qubit to sidebands: the spinlocking measurements with sidebands and qubit Stark Shift measurements as a function of sideband power. Both measurements produce oscillations that we fit to extract the frequency. The resulting frequencies for the spinlocking and starkshift measurements exhibit different scalings with respect sidebands power. In the spinlocking sequence, we repeat the measurement for several different red sideband powers, recording the resonant population swaps between $|+0\rangle$ and $|-1\rangle$. We fit the population evolution and extract the frequency of the oscillations, which has a $\chi\sqrt{\bar{n}}$ dependency, and sets the strength of the couplings between the floquet qubit and sidebands, as shown in Fig. 8. This $\chi\sqrt{\bar{n}}$ value sets the gate detuning and also gate time. We also measure the Stark shift of the bare qubit frequency as a function of the sideband strength using a Ramsey measurement, for which we expect a $\chi\bar{n}$ dependence. Combining these two relations, we obtain the χ 's.

Rabi Drive

We sweep the amplitude of the qubit pulse for repeated Rabi drive measurements. The population swaps between $|g\rangle$ and $|e\rangle$ are fit with a $\sin()$ function and the frequency is extracted. We then plot the frequencies as a function of the amplitude of the pulse, producing a linear dependence (Fig. 9a). The linear fit is used to interpolate between the data points to select the amplitudes required for specific Rabi drive frequencies.

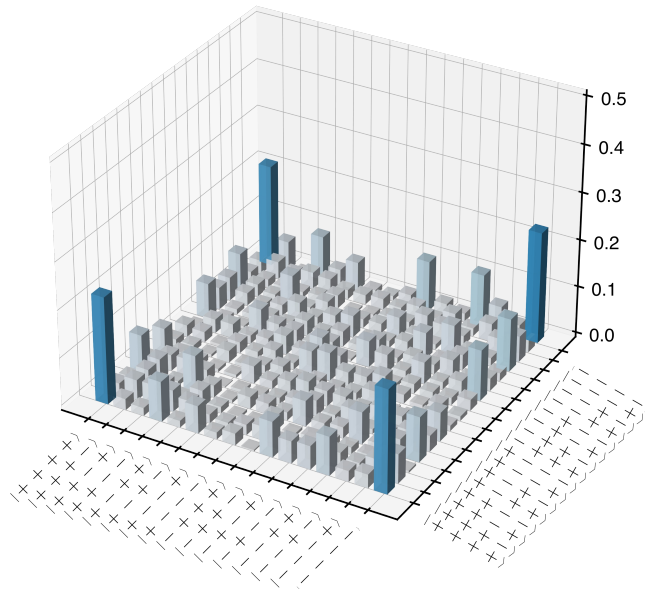


Figure 6. 4Q density matrix

Sidebands Phase calibration

The phase difference of the sidebands and their relative phase compared to the qubit drive determines whether the Hamiltonian is an XX or combination of XX and YY with respect to the $|\pm\rangle$ basis. Due to the fact that the Rabi pulse we use for the gate has a cosine edge, there is an extra accumulation of phase difference between the sidebands and the qubit drive depending on the length of the cosine edge. We calibrate the sideband phase such that we implement the XX interaction. One can tune the gate angle $\varphi_{\Delta}^{\text{eff}} = \varphi_{\Delta}(t_r) - \Omega_R t_r = \varphi_{\Delta}(0) + \Omega_R t_r$ by adjusting the sideband phase difference $\varphi_{\Delta}(0)$. The angle is calibrated by initializing the qubits in $|00\rangle$, running the gate and looking at the concurrence as a function of the sideband phase. The effective angle $\varphi_{\Delta}^{\text{eff}}$ is set to 0 when the concurrence is minimum. In Fig Fig. 9b

Unwinding Rabi drives of the gate

The gates applied on undriven transmon qubits commonly take place in the frame rotating at the mode frequencies. In the case of Rabi driven qubits, the system

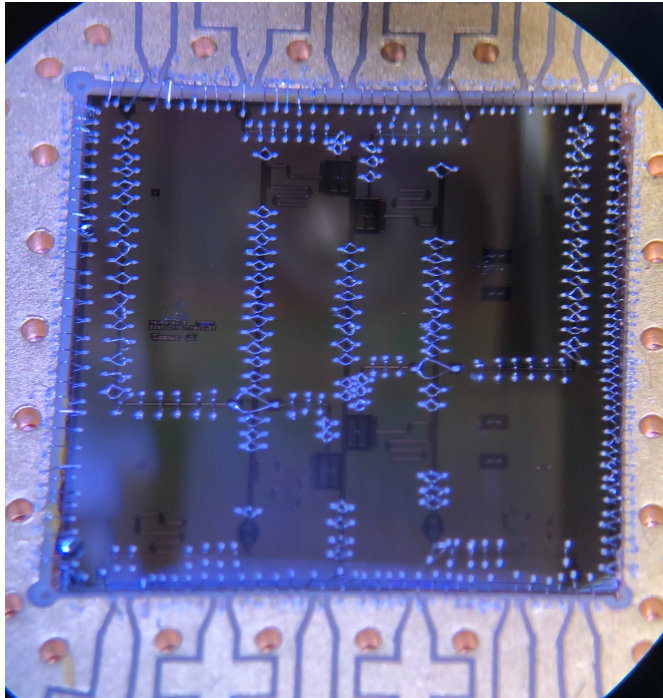


Figure 7. Chip used for experiment.

undergoes the MS gate in the frame rotating at the Rabi frequencies. As the latter is not kept constant throughout the entire pulse sequence and as the tomography is done in the original undriven frame, one needs to track and unwind the phase accumulated to characterize the gate.

The Rabi drive pulse, of duration t_p , consists a square amplitude pulse, of duration t_{sq} during which the entangling operation is happening, sandwiched between two cos edge ramps, of duration t_r . The gate occurs during the square pulse, and one has $t_p = t_{sq} + 2t_r$.

Neglecting decoherence, the propagator corresponding to the full Rabi drive pulse can be expanded as $U_{t_p,0} = U_{\text{down}}U_{\text{gate}}U_{\text{up}}$, with $U_{\text{down}} = U_{t_{sq}+2t_r,t_{sq}+t_r}$, $U_{\text{gate}}(t_{sq}) = U_{t_{sq}+t_r,t_r}$, and $U_{\text{up}} = U_{t_r,0}$. Note that the populations in Fig. 3 are plotted as a function of t_{sq} .

As the ramp time t_r is much shorter than the inverse gate rate, the qubit-resonator coupling is (almost) resonant only during the square pulse. Consequently, U_{down}

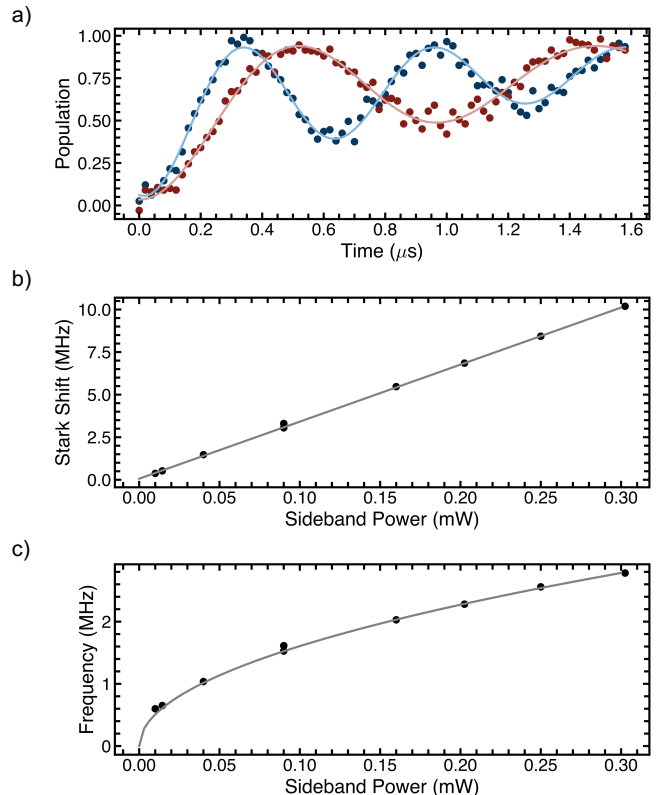


Figure 8. Calibration of χ for Qubit 3. a) Results of the spin-locking measurement with sidebands on. Oscillations between $|+\rangle$ and $|-\rangle$ states observed for different powers of the sideband. We show two examples here at two different sideband strengths. b) Stark shift vs power of sidebands. c) Frequency of the fitted oscillations from a) vs power of sidebands.

and U_{up} consists of local operations on each qubit around the X axis (accumulated phase), given by $U_{\text{up/down}} = \exp(-i\Omega_R t_r \mathbf{J}_x / 2)$, where $\mathbf{J}_x = (\boldsymbol{\sigma}_{x_1} + \boldsymbol{\sigma}_{x_2}) / 2$. The factor $1/2$ in $U_{\text{up/down}}$ comes from the integral of the cos edge pulse. Here, we have assumed that the Rabi frequencies of the qubit are the same.

The propagator $U_{\text{gate}}(t_{sq})$ expands as $U_{\text{gate}}(t_{sq}) = U_R(t_{sq})U_{\text{gate}}^R(t_{sq})$, where $U_R(t_{sq}) = \exp(-i\Omega_R t_{sq} \mathbf{J}_x)$ represents the single qubit phase accumulated during the gate, and $U_{R,\text{gate}}(t_{sq}) = U_{t_{sq}+t_r,t_r}^R$ is the time evolution operator generated by the Hamiltonian in Eq. (2). Since the two sideband tones are detuned from one another by $2\Omega_R$, the effective sideband phase difference φ_Δ of the gate depends on the time t_r at which the gate starts. More precisely, one can write $\varphi_\Delta(t_r) = \varphi_\Delta(0) + 2\Omega t_r$.

The global evolution operator can be

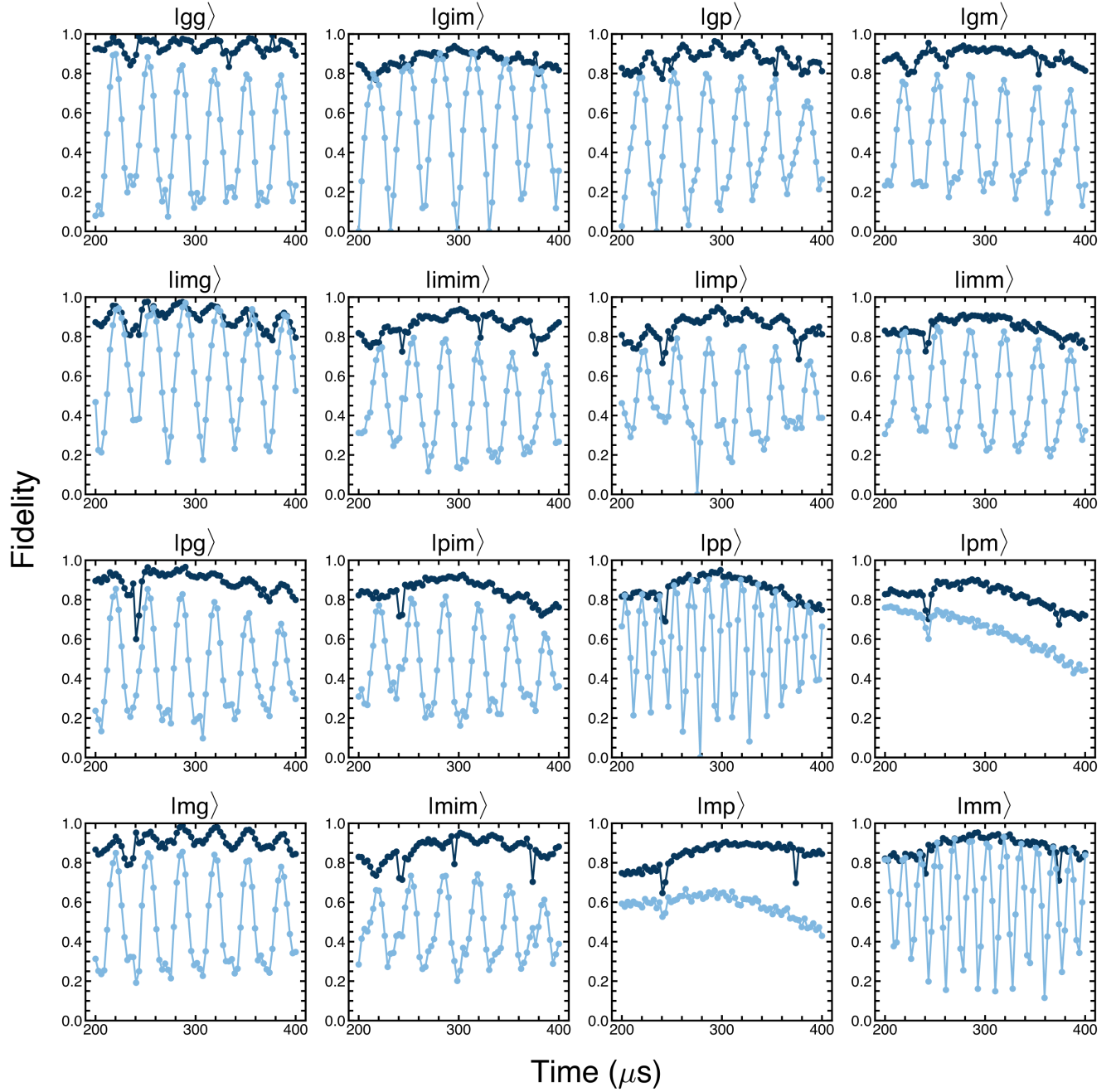


Figure 11. Fidelities to the target states for 16 different initial states labelled in the title of each subplot, used to construct the PTM of figure 3. The light blue points are the fidelities without removing the Rabi drive, exhibiting oscillations at 30 MHz for most initial states, at 60 MHz for $|+, +\rangle, |-, -\rangle$ and no oscillations for $|+, -\rangle, |-, +\rangle$. The dark blue points are the processed data which have been unwound. The points at $t=300$ ns give an average fidelity of 92%.

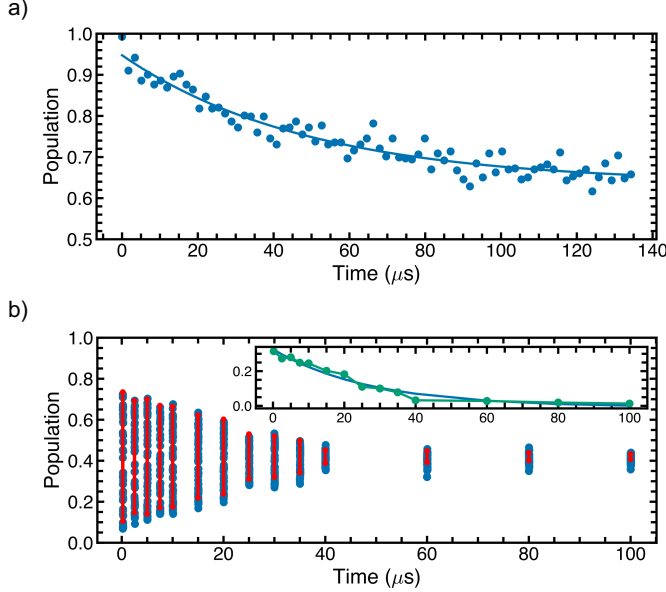


Figure 12. Examples of $T_{1,\rho}$ and $T_{2,\rho}$ measurements. a) A sample $T_{1,\rho}$ measurement obtained from performing a spin-locking pulse sequence. Lifetimes are extracted by fitting an exponential model. b) Example of a $T_{2,\rho}$ measurement. We sample a Rabi measurement at different times and extract the max amplitudes (green points in the inset). We fit the amplitude of Rabi oscillations at different times. Here $T_{2,\rho} = 27\mu$ s.

Single Qubit Pulses quality

We characterized the pulses via Randomized Benchmarking. The results vary each qubit, ranging from $p=0.985$ to 0.992 when sidebands are not on and range from 0.98 to 0.985 when sidebands are on. A more complete characterization of the pulse and readout quality would be the PTM for the identity operation, shown in Fig. 10. The process fidelity for the identity operation is 93.5% .

Derivation of the MS Hamiltonian from bare frame and driven qubits

Let us consider two transmon qubits coupled to a resonator through a Jaynes Cumming Hamiltonian, two resonant Rabi drives applied to the transmons and two sideband tones applied to the resonator. The Hamiltonian of the driven system can be written in the following

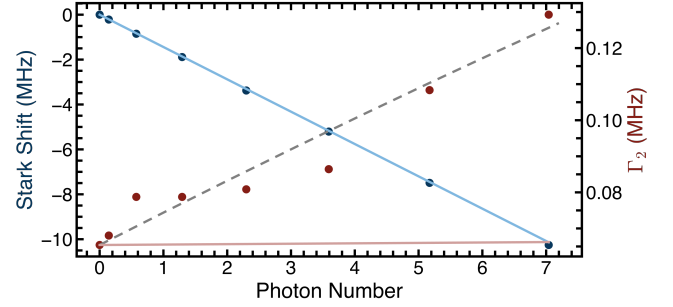


Figure 13. Stark shift and dephasing with 2 sidebands. The blue points correspond to the Stark shift experienced by the qubit. The blue line indicates the linear fit. The red points correspond to the measurement induced dephasing and the red line is the expected dephasing according to [37]. We see a large difference between the expected from models and actual dephasing. We believe the presence of additional thermal photons could be responsible for this discrepancy and the dashed black line corresponds to the predicted dephasing with the added effect of thermal photons.

form [39],

$$\begin{aligned} \mathbf{H}(t)/\hbar = & \tilde{\omega}_c \mathbf{a}^\dagger \mathbf{a} + \sum_{k=1}^2 \tilde{\omega}_k \mathbf{b}_k^\dagger \mathbf{b}_k \\ & - \sum_{k=1}^2 E_J^k \left(\cos \left(\frac{\Phi_k}{\phi_0} \right) + \frac{1}{2} \frac{\Phi_k^2}{\phi_0^2} \right) \\ & + \sum_{k=1}^2 \Omega_{R_k}(t) i (\mathbf{b}_k^\dagger - \mathbf{b}_k) \\ & + i(\epsilon_r(t) + \epsilon_b(t)) (\mathbf{a}^\dagger - \mathbf{a}), \end{aligned} \quad (\text{A.6})$$

where

$$\Phi_k = \phi_k^a (\mathbf{a} + \mathbf{a}^\dagger) + \sum_{k'=1}^2 \phi_{k,k'}^b (\mathbf{b}_{k'} + \mathbf{b}_{k'}^\dagger).$$

Here we note \mathbf{a} (resp. \mathbf{a}^\dagger) and \mathbf{b}_k (resp. \mathbf{b}_k^\dagger) the annihilation (resp. creation) operator of the resonator and qubit k , $\tilde{\omega}_c$ and $\tilde{\omega}_k$ the dressed frequencies of the resonator and qubit k respectively, E_J^k the Josephson energie of qubit k , $\phi_0 = \hbar/2e$ the superconducting flux quantum. The drives applied to the resonator (resp. the transmons) also weakly drive the transmons (resp. the resonators) through the hybridization. However, if the frequencies

of the system are well separated, these terms can be neglected.

Noting that $\phi_k^a \ll \phi_{j,j}^b$, the dressed mode \mathbf{a} shares a much smaller part of the non-linearity than the dressed modes \mathbf{b}_k . This is why we refer to the b modes as the qubit modes and the a modes as the cavity modes. In the transmon regime, zero-point phase fluctuations of the modes are small, and we can limit the expansion of the cosine to fourth order. Assuming that the frequencies of the system are well separated, and $|\tilde{\omega}_k - \tilde{\omega}_l| \gg \Omega$, where Ω is the common Rabi frequency, the Hamiltonian simplifies to

$$\begin{aligned} \mathbf{H}(t)/\hbar &= \omega_c \mathbf{a}^\dagger \mathbf{a} + \sum_{k=1}^2 \omega_k \mathbf{b}_k^\dagger \mathbf{b}_k - K_k \mathbf{b}_k^{\dagger 2} \mathbf{b}_k^2 \\ &- \mathbf{a}^\dagger \mathbf{a} \left(\sum_{k=1}^2 \chi_k \mathbf{b}_k^\dagger \mathbf{b}_k \right) - \sum_{j \neq k}^2 \chi_{j,k} \mathbf{b}_j^\dagger \mathbf{b}_j \mathbf{b}_k^\dagger \mathbf{b}_k \\ &+ \sum_{k=1}^2 \Omega_{R_k}(t) i(\mathbf{b}_k^\dagger - \mathbf{b}_k) \\ &+ i(\epsilon_r(t) + \epsilon_b(t))(\mathbf{a}^\dagger - \mathbf{a}), \end{aligned} \quad (\text{A.7})$$

where ω_a and ω_k are the renormalized frequencies, χ_k , $\chi_{j,k}$ and K_k are respectively the cross Kerr coefficient between the resonator and qubit k , the cross Kerr coefficient between qubit j and qubit k , the self Kerr coefficient of qubit k . The Rabi drives and the sideband tones take the forms $\Omega_{R_k}(t) = \Omega_k \cos(\omega_k t)$ and $\epsilon_{r/b}(t) = \epsilon_r \cos((\omega_c + \Omega_{r/b})t + \varphi_{r/b})$, where $\Omega_{r/b}$ is the detuning of the tone from the resonator frequency.

One can write $\Omega_r = -\Omega_{SB} + \delta$, and $\Omega_b = \Omega_{SB} + \delta$, where δ is a small detuning compared to Ω_{SB} . We eliminate the drive term in the Hamiltonian by applying the displacement on the cavity

$$\begin{aligned} \mathbf{a} &= \mathbf{d} + \alpha(t), \\ \alpha(t) &= \frac{\epsilon_r e^{-i\varphi_r}}{2i} \left(\frac{e^{-i(\omega_a - \Omega_{SB} + \delta)t}}{-\Omega_{SB} + \delta} + \frac{e^{i(\omega_a - \Omega_{SB} + \delta)t}}{2\omega_a - \Omega_{SB} + \delta} \right) \\ &+ \frac{\epsilon_b e^{-i\varphi_b}}{2i} \left(\frac{e^{-i(\omega_a + \Omega_{SB} + \delta)t}}{\Omega_{SB} + \delta} + \frac{e^{i(\omega_a + \Omega_{SB} + \delta)t}}{2\omega_a + \Omega_{SB} + \delta} \right) \end{aligned}$$

We choose ϵ_b and ϵ_r such that $|\epsilon_b|/(\Omega_{SB} + \delta) = |\epsilon_r|/(-\Omega_{SB} + \delta) = \sqrt{\bar{n}}$. As $|\epsilon_{r/b}| \ll 2\omega_a \pm \Omega_{SB} + \delta$, one can discard the terms having $2\omega_a \pm \Omega_{SB} + \delta$ in the denominator. The amplitude of the classical field becomes simply $\alpha(t) = \sqrt{2\bar{n}} \cos(\Omega_{SB}t + \phi_\Delta) e^{-i((\omega_c + \delta)t + \phi_\Sigma)}$, where $\phi_\Sigma = \frac{\phi_r + \phi_b + \pi}{2}$ and $\phi_\Delta = \frac{\phi_b - \phi_r}{2}$. We drop the phase fac-

tor $e^{-i\phi_\Sigma}$, as it can be eliminated by the transformation $\mathbf{a} \rightarrow \mathbf{a} e^{i\phi_\Sigma}$.

Moving to the frame rotating at the frequencies $\omega_a + \delta$ and ω_k , and discarding the counter rotating terms, the Hamiltonian becomes

$$\begin{aligned} \mathbf{H}(t)/\hbar &= -\delta \mathbf{d}^\dagger \mathbf{d} - \sum_{k=1}^2 K_k \mathbf{b}_k^{\dagger 2} \mathbf{b}_k^2 \\ &- (\mathbf{d}^\dagger \mathbf{d} + \sqrt{2\bar{n}} \cos(\Omega_{SB}t + \phi_\Delta))(\mathbf{d}^\dagger + \mathbf{d}) \\ &+ 2\bar{n} \cos^2(\Omega_{SB}t + \phi_\Delta) \left(\sum_{k=1}^2 \chi_k \mathbf{b}_k^\dagger \mathbf{b}_k \right) \\ &- \sum_{j \neq k}^2 \chi_{j,k} \mathbf{b}_j^\dagger \mathbf{b}_j \mathbf{b}_k^\dagger \mathbf{b}_k \\ &+ \sum_{k=1}^2 \Omega_k \cos(\omega_k t) i(\mathbf{b}_k^\dagger e^{i\omega_k t} - \mathbf{b}_k e^{-i\omega_k t}). \end{aligned} \quad (\text{A.8})$$

From this more complete form of the Hamiltonian, we note two possible limitations to the performance of the gate. First, the cross-Kerr or ZZ interaction, which becomes a resonant XX interaction when the Rabi drives are on. Secondly, another limitation is due to the finite ratio of the Rabi frequency over the anharmonicity of the transmons, Ω_k/K_k .

Assuming that the anharmonicity of the transmons remains larger than the Rabi frequency, i.e $K_k/\Omega_k \gg 1$, we can make a two-level approximations and project the above Hamiltonian on the ground and excited states of the transmons. In addition, we neglect the cross-Kerr between the qubits mediated by the resonator, and perform a rotating-wave approximation on the Rabi drive terms, leading to

$$\begin{aligned} \mathbf{H}(t)/\hbar &= -\delta \mathbf{d}^\dagger \mathbf{d} + \sum_{k=1}^2 \frac{\Omega_k}{2} \sigma_{x_k} \\ &- (\mathbf{d}^\dagger \mathbf{d} + \sqrt{2\bar{n}} \cos(\Omega_{SB}t + \phi_\Delta))(\mathbf{d}^\dagger + \mathbf{d}) \\ &+ 2\bar{n} \cos^2(\Omega_{SB}t + \phi_\Delta) \left(\sum_{k=1}^2 \tilde{\chi}_k \sigma_{z_k} \right), \end{aligned} \quad (\text{A.9})$$

where $\tilde{\chi}_k = \chi_k/2$. In the following and in the main text (under Circuit QED Implementation), we take the definition $\chi_k := \tilde{\chi}_k$. Setting $\Omega_k = \Omega_{SB}$ and $\chi_k = \chi$ for all k , and going into the frame rotating at the Rabi drive frequency, the Hamiltonian becomes that of eq.(2),

$$\mathbf{H}_R = -\delta \mathbf{d}^\dagger \mathbf{d} - 2\sqrt{2\bar{n}}\chi \mathbf{J}_{zy}^{\varphi_\Delta} (\mathbf{d} + \mathbf{d}^\dagger) + \mathbf{H}_{\text{err}}(t), \quad (\text{A.10})$$

where $\mathbf{J}_{\varphi_\Delta} = \cos(\varphi_\Delta)\mathbf{J}_z - \sin(\varphi_\Delta)\mathbf{J}_y$, $\mathbf{J}_l = \sum_k \boldsymbol{\sigma}_{l_k}/2$, $l = x, y, z$ are the generalized spin operators, and $\mathbf{H}_{\text{err}} = \mathbf{A}_1 e^{i\Omega_{SB}t} + \mathbf{A}_1 e^{2i\Omega_{SB}t} + \text{h.c}$ represents spurious oscillating terms [25]. $\mathbf{H}_{\text{err}}(t)$ can be neglected as long as one satisfies $\|\mathbf{B}_{1,2}\| \ll \Omega_R$. The dominant term in $\mathbf{H}_{\text{err}}(t)$ comes from the term in third line of eq. (A.9), and scales as $\chi\bar{n}e^{i\Omega t}$. This leads to a renormalization of the Rabi frequency that is taken into account in the simulations. This term is responsible for the fidelity saturation in Fig.5b. When the Rabi frequency is set to $\Omega_R = 2\Omega_{SB}$, this term becomes resonant and leads to large oscillation of $\langle\sigma_X\rangle$ seen at $\Omega_R = 60$ MHz in Fig. 2c.

Master equation

All simulations are obtained using the following master equation:

$$\begin{aligned} \frac{d\rho}{dt} = & -\frac{i}{\hbar}[\mathbf{H}(t), \rho] \\ & + \sum_k \mathcal{D}[\sqrt{1/2T_{1,\rho,k}}\boldsymbol{\sigma}_{z_k}](\rho) \\ & + \sum_k \mathcal{D}[\sqrt{1/2T_{2,\rho,k}}\boldsymbol{\sigma}_{z_x}](\rho) \\ & + \mathcal{D}[\sqrt{\kappa}\mathbf{a}](\rho), \end{aligned} \quad (\text{A.11})$$

where $\mathcal{D}[\mathbf{M}](\rho) = \mathbf{M}\rho\mathbf{M}^\dagger - (\mathbf{M}^\dagger\mathbf{M}\rho + \rho\mathbf{M}^\dagger\mathbf{M})/2$. Here, $T_{1,\rho,k}$ and $T_{2,\rho,k}$ are the spinlocking times of qubit k , and we use the Hamiltonian of Eq. (A.9).

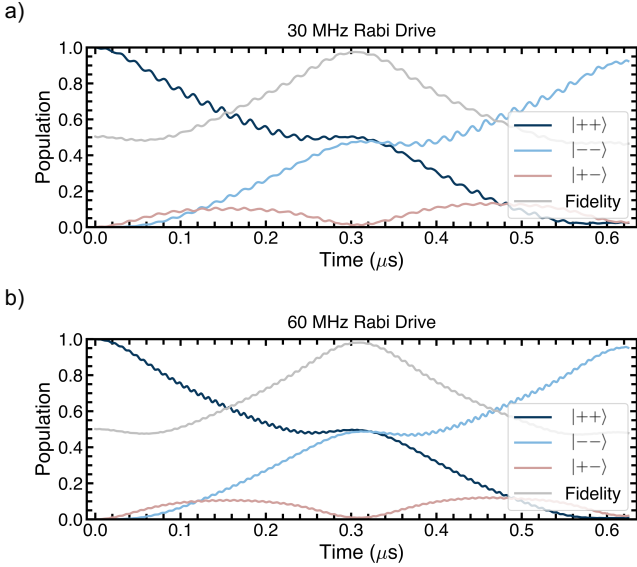


Figure 14. We show the simulated populations as a function of time after initializing the qubits in $|--\rangle$ for couplings and Rabi drives similar to what is present on our processor. These simulations are obtained from simulating Eq. (A.11). The evolution shows that the $|++\rangle$ and the $|--\rangle$ populations meet at around 300 ns. Simultaneously the $|+-\rangle$ and $|-+\rangle$ populations are at their lowest at 300 ns. This should be the time of maximum entanglement. In addition we show a comparison of population evolution between a gate performed using 30 MHz Rabi drives (top) and 60 MHz Rabi drives (bottom).