

Lawrence Berkeley National Laboratory

Recent Work

Title

Microstructural Influence on the Work Hardening of Aluminum-Lithium Alloy 2090 at Cryogenic Temperatures

Permalink

<https://escholarship.org/uc/item/3q40m9jz>

Authors

Chu, D.
Tseng, C.
Morris, J.W.

Publication Date

1991-06-01

Center for Advanced Materials

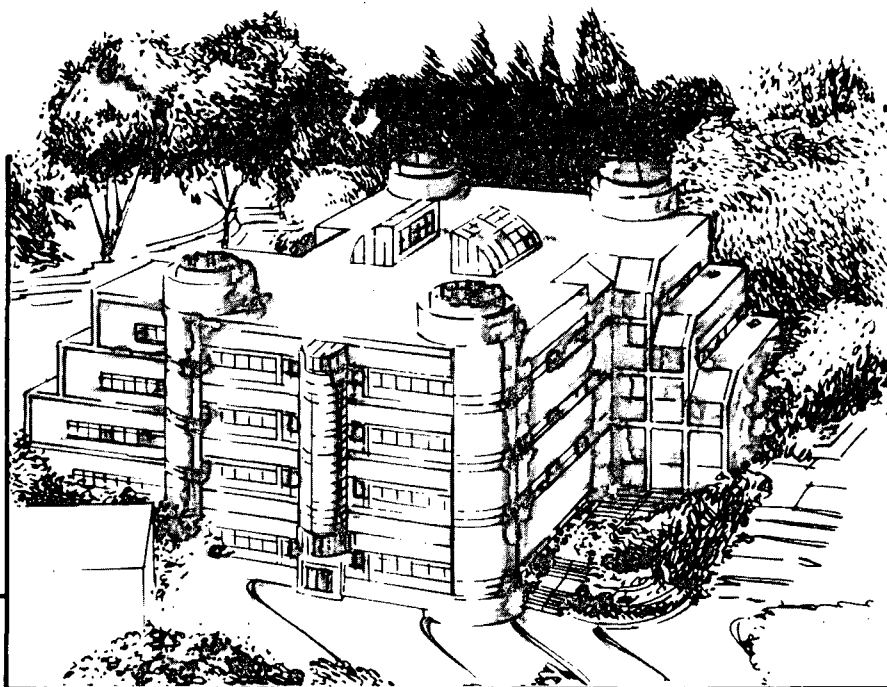
CAM

Presented at the Cryogenic Engineering Conference/International Cryogenic Materials Conference '91, Huntsville, AL, June 11-14, 1991, and to be published in the Proceedings

Microstructural Influence on the Work Hardening of Aluminum-Lithium Alloy 2090 at Cryogenic Temperatures

D. Chu, C. Tseng, and J.W. Morris, Jr.

June 1991



Materials and Chemical Sciences Division
Lawrence Berkeley Laboratory • University of California
ONE CYCLOTRON ROAD, BERKELEY, CA 94720 • (415) 486-4755

Prepared for the U.S. Department of Energy under Contract DE-AC03-76SF00098

1 LOAN COPY 1
1 Circulates 1
1 for 4 weeks 1
Bldg. 50 Library.
Copy 2

LBL-31075

DISCLAIMER

This document was prepared as an account of work sponsored by the United States Government. While this document is believed to contain correct information, neither the United States Government nor any agency thereof, nor the Regents of the University of California, nor any of their employees, makes any warranty, express or implied, or assumes any legal responsibility for the accuracy, completeness, or usefulness of any information, apparatus, product, or process disclosed, or represents that its use would not infringe privately owned rights. Reference herein to any specific commercial product, process, or service by its trade name, trademark, manufacturer, or otherwise, does not necessarily constitute or imply its endorsement, recommendation, or favoring by the United States Government or any agency thereof, or the Regents of the University of California. The views and opinions of authors expressed herein do not necessarily state or reflect those of the United States Government or any agency thereof or the Regents of the University of California.

LBL 31075

**Microstructural Influence on the Work Hardening of
Aluminum-Lithium Alloy 2090 at Cryogenic Temperatures**

D. Chu, C. Tseng, and J.W. Morris, Jr.

Center for Advanced Materials
Materials and Chemical Sciences Division
Lawrence Berkeley Laboratory
1 Cyclotron Road
Berkeley, CA 94720

and

Department of Materials Science and Mineral Engineering
University of California

June 1991

This work was supported by the Director, Office of Energy Research,
Office of Basic Energy Science, Materials Sciences Division of the U.S.
Department of Energy under Contract No. *DE-AC03-76SF00098*.

Microstructural Influence on the Work Hardening of Aluminum-Lithium Alloy 2090 at Cryogenic Temperatures

D. Chu, C. Tseng, and J.W. Morris, Jr.

Center for Advanced Materials, Lawrence Berkeley Laboratory, and
Department of Materials Science and Mineral Engineering,
University of California, Berkeley

Previous studies indicate that the work hardening characteristics of a Vintage III 2090-T81 12.7-mm (0.5-in.) plate is highly dependent on the through-thickness position.^[1,2] This dependency has been linked to two distinctly different microstructures existing as laminates within the plate.^[3] An investigation of the two microstructures by both optical and transmission electron microscopy reveal a difference in the distribution of grains and subgrains. It is believed that these factors affect the work hardening characteristics by governing the manner in which slip is transmitted from grain to grain. The findings are positive as they suggest a practical means by which improvements in work hardening can be obtained through modifications of the microstructure at the polygranular level.

Introduction

Due to their potential as a structural material with lower density, higher stiffness and strength relative to current high strength aluminum alloys,^[4,5] aluminum-lithium alloys have become candidate materials for aerospace applications.^[6,7] One particular alloy which has received a great deal of attention in recent years is the Al-Cu-Li-Zr alloy 2090. Previous studies have revealed an excellent strength-toughness combination for 2090 at cryogenic temperatures.^[6,8-13] Subsequently, much of the work on 2090 has concentrated on understanding the source of the excellent mechanical properties observed at cryogenic temperatures.^[1-3,6,8-14] Although the determining mechanism remains an issue of debate, it is generally agreed upon that the deformation behavior, the ability of a material to work harden, plays an important part in determining the subsequent fracture toughness.^[6,8,10,12]

The majority of work on 2090 and other like alloys associates increases in work hardening with greater slip homogeneity.^[15-17] Jata and Starke^[16] relate this greater homogeneity with a decrease in slip planarity. The planarity of slip is, in turn, controlled by the ability of dislocations to cross-slip. Since cross-slip is a thermally activated process, it is sensitive to temperature and to solute atoms that interact with dislocations. When cross-slip is difficult, as it is at cryogenic temperatures, work hardening is expected to increase due to the decreased ability of a dislocation to bypass an impenetrable obstacle. Following this line of reasoning, the improved work hardening observed in 2090 and other aluminum-lithium alloys has been regarded as predominantly a temperature-induced phenomenon.^[6,8,10,16]

General theories on work hardening attribute work hardening to microstructural features at the dislocation level. Evidence of this can be found in studies of low carbon steel.^[18,19] Results suggest that for a certain temperature range, the flow stress in low carbon steels is controlled predominantly by the motion of screw dislocations and not by other larger microstructural features.^[20] The implications of this conclusion is not promising since it suggests that the work hardening, as it is controlled by dislocation motion, will remain unchanged despite further modifications of the polygranular structure.

Although the inability to influence the deformation behavior through manipulation of the polygranular structure may be true in some materials such as low carbon steel, this does not appear to be the case for aluminum-lithium alloys. Studies on a 12.7-mm (0.5-in.) Vintage III 2090-T81 plate material^[1-3] reveal two distinctly different microstructures existing as individual laminates within the same plate. Tensile tests conducted on the two microstructures reveal a significant difference in the work hardening temperature response.^[2,3] This finding is both promising and potentially important as it implies that, at least for this alloy system, the work hardening is controlled to some extent by microstructural features at the polygranular level.

Ongoing research has continued with transmission electron microscopy toward understanding the microstructural source of the observed differences in work hardening. This paper reviews our current understanding and the results from preliminary microscopy studies.

Experimental Procedure

The material investigated in this study was a Vintage III 2090 plate that was provided by Alcoa in the form of a 12.7-mm (0.5-in.) plate in the -T81 condition (solution heat treated, stretched and peak-aged). This temper is also referred to as -T8E41 in earlier publications. The composition was determined by atomic absorption spectroscopy to be Al-3.05Cu-2.16Li-0.11Zr. The process is a proprietary one that includes a thermomechanical reduction into plate form, a solution heat treatment, a subsequent 6 to 8 pct stretch, and a final peak age at 163 °C for approximately 24 hours.

Mechanical tests were done at one of four temperatures: 300 K (room temperature), 200 K (dry ice and alcohol), 77 K (liquid nitrogen), or 4 K (liquid helium). Tests were performed in servohydraulic testing machines equipped for cryogenic testing. Details of the data collection and analysis are documented in earlier papers.^[1-3]

The as-received microstructure was examined by both optical microscopy and transmission electron microscopy (TEM). The areas examined were selected from the regions corresponding to mid-thickness and quarter-thickness of the plate. Optical samples were polished to 0.05 μm and etched using Keller's reagent (2.5 pct HNO_3 , 1.5 pct HCl , 0.5 pct HF (40 pct), balance H_2O) for approximately 30 seconds. Corresponding TEM samples were prepared by mechanically grinding to 0.25 mm (0.010 in.) and punching out 3-mm disks. The disks were electropolished with the double jet technique at -30°C in a 4:1 mixture of methanol and nitric acid. The polishing condition was set at 18 to 20 V.

Results and Discussion

A complete tabulation of the measured mechanical properties from both tensile tests and fracture toughness tests can be found in an earlier publication.^[2] Those pertinent to the present discussion are highlighted here.

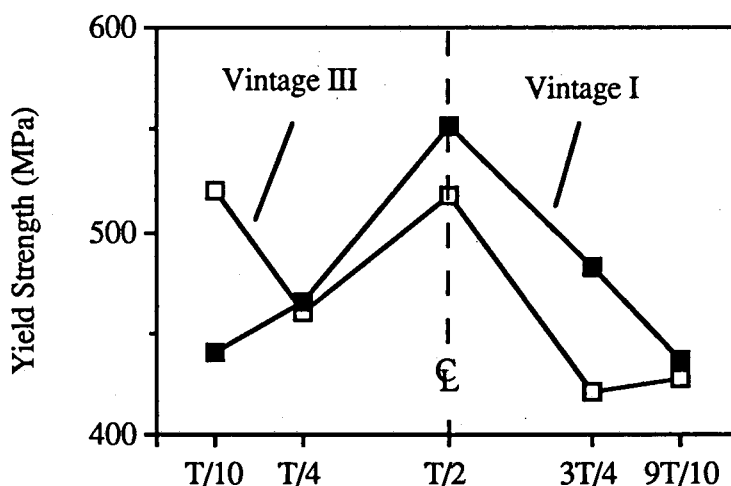


Figure 1: Comparison of the longitudinal yield strength as a function of the through-thickness position for Vintage I and Vintage III 2090-T81 at 300 K.

Figure 1 plots the yield strength as a function of test temperature and distance from the centerline of the Vintage III 2090-T81 plate material. This profile is an improvement over the yield strength profile exhibited by its predecessor, Vintage I 2090, which decreases monotonically from mid-thickness to both surfaces.^[21-24] Earlier work has

related the parabolic yield strength profile associated with Vintage I 2090 to a parallel variation in the amount of hot-rolled texture components.[22,23] Despite the variation in texture found in Vintage I 2090, the temperature response of the work hardening remains independent of the through-thickness position. Although the absolute values differ, work hardening curves obtained from tensile specimens at differing through-thickness positions exhibit a steady and monotonic increase with decreasing temperature, as depicted schematically in Figure 2.

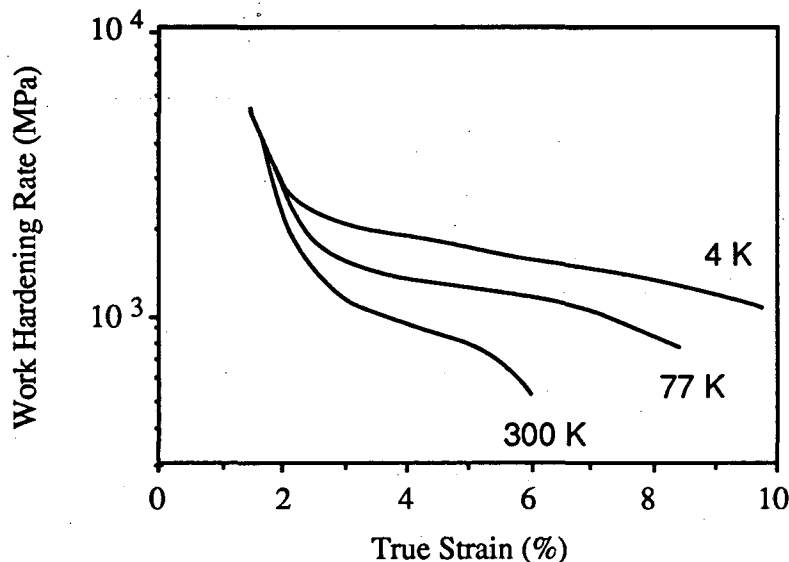


Figure 2: Schematic showing the improvement in work hardening with decreasing temperature in Vintage I 2090.

The most striking difference observed resides in the temperature response of the work hardening at mid-thickness and quarter-thickness in the Vintage III material. The improvement in the work hardening with decreasing temperature at mid-thickness is similar to that observed in the Vintage I material, as depicted in Figure 3a. In contrast, work hardening plots obtained from quarter-thickness exhibit little to no improvement with decreasing temperature until 4 K (Figure 3b). Since both regions are extracted from the same plate, they receive the same heat treatment and contain the same composition and intragranular microstructure. Subsequently, differences in the work hardening characteristic must lie at the polygranular level.

An optical study reveals that such a polygranular difference does exist. Figure 4 displays the microstructure at mid-thickness (Figure 4a) and quarter-thickness (Figure 4b). Although varying grain sizes are observed at mid-thickness, the average grain size is still significantly smaller than that within the quarter-thickness region. A difference in subgrain development is also revealed in Figure 4; the mid-thickness region exhibits a strong distribution of subgrains compared to quarter-thickness.

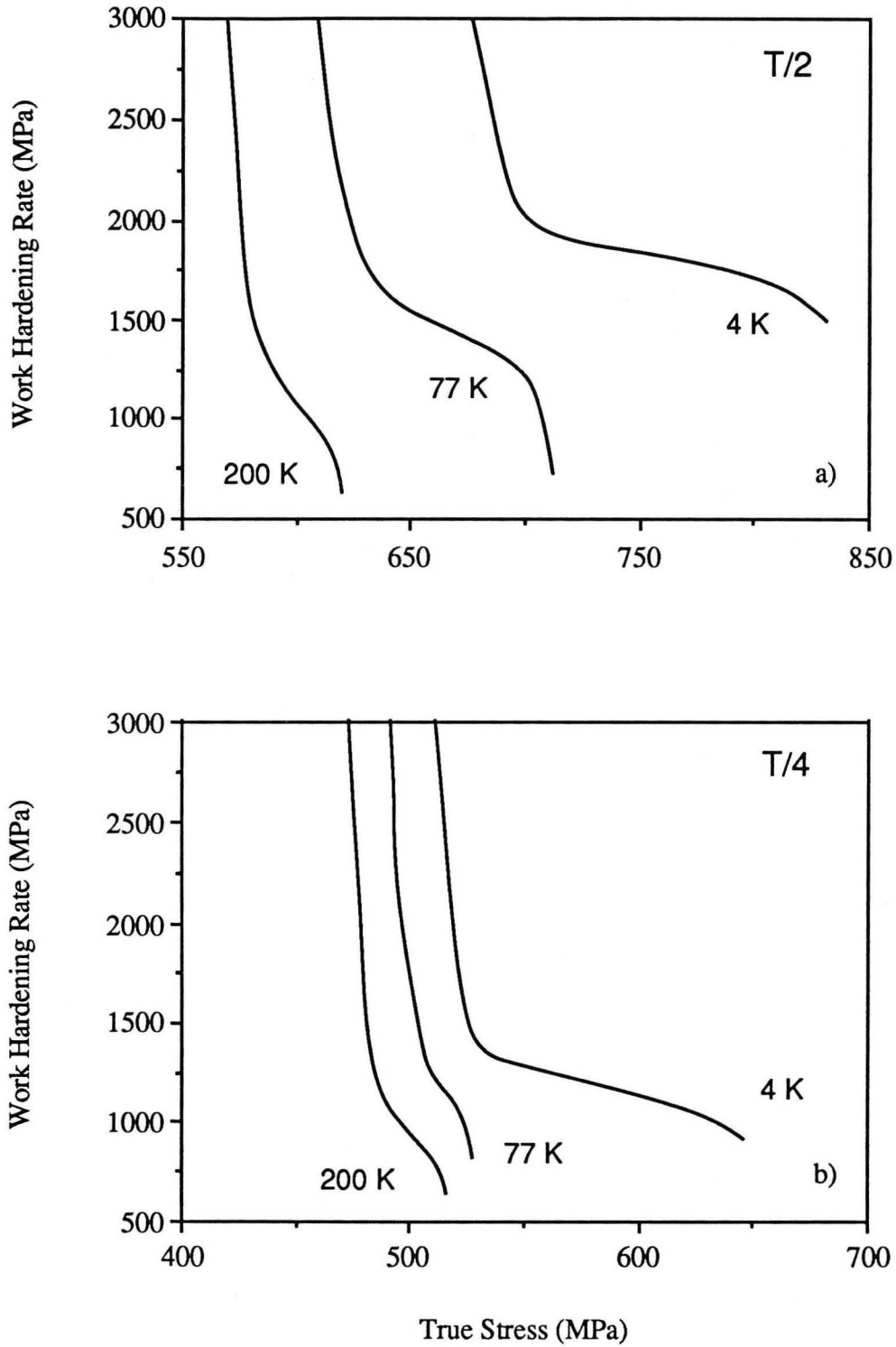


Figure 3: Temperature variation of the work hardening rate as a function of true stress for 2090-T81 at a) mid-thickness and b) quarter-thickness.

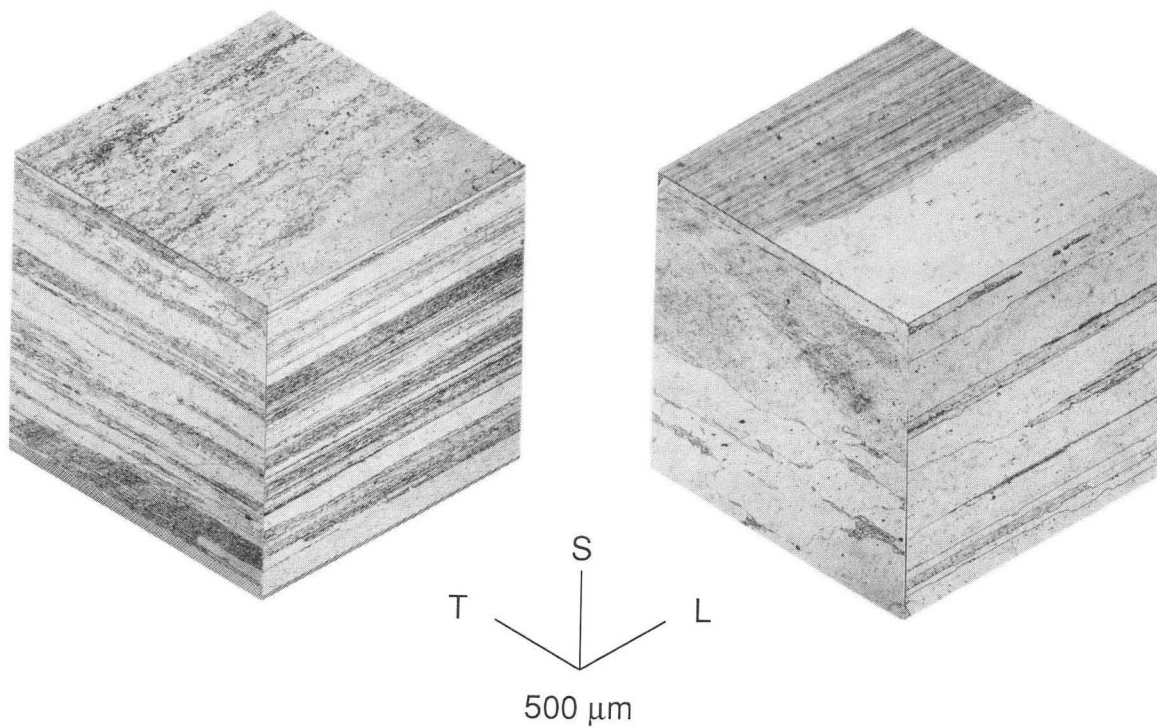


Figure 4: Optical micrograph of the microstructure at mid-thickness (on left) and quarter-thickness (on right). (XBB 915-3801)

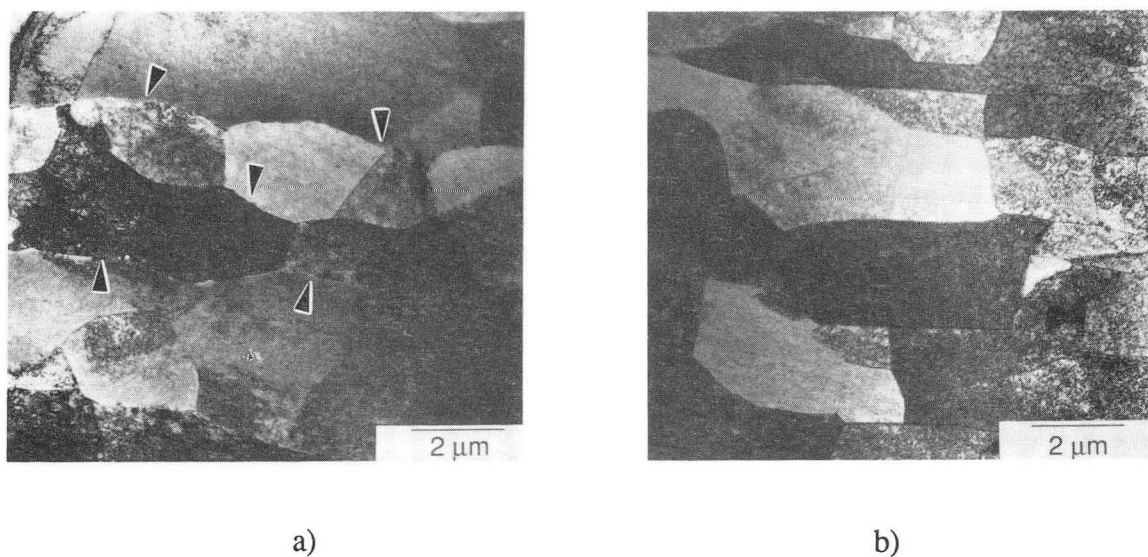


Figure 5: TEM micrograph of the grain structure at mid-thickness. Note the extensive and homogeneous subgrain formation within a) one grain and b) several grains (grain boundaries denoted by arrows). (XBB 915-4155)

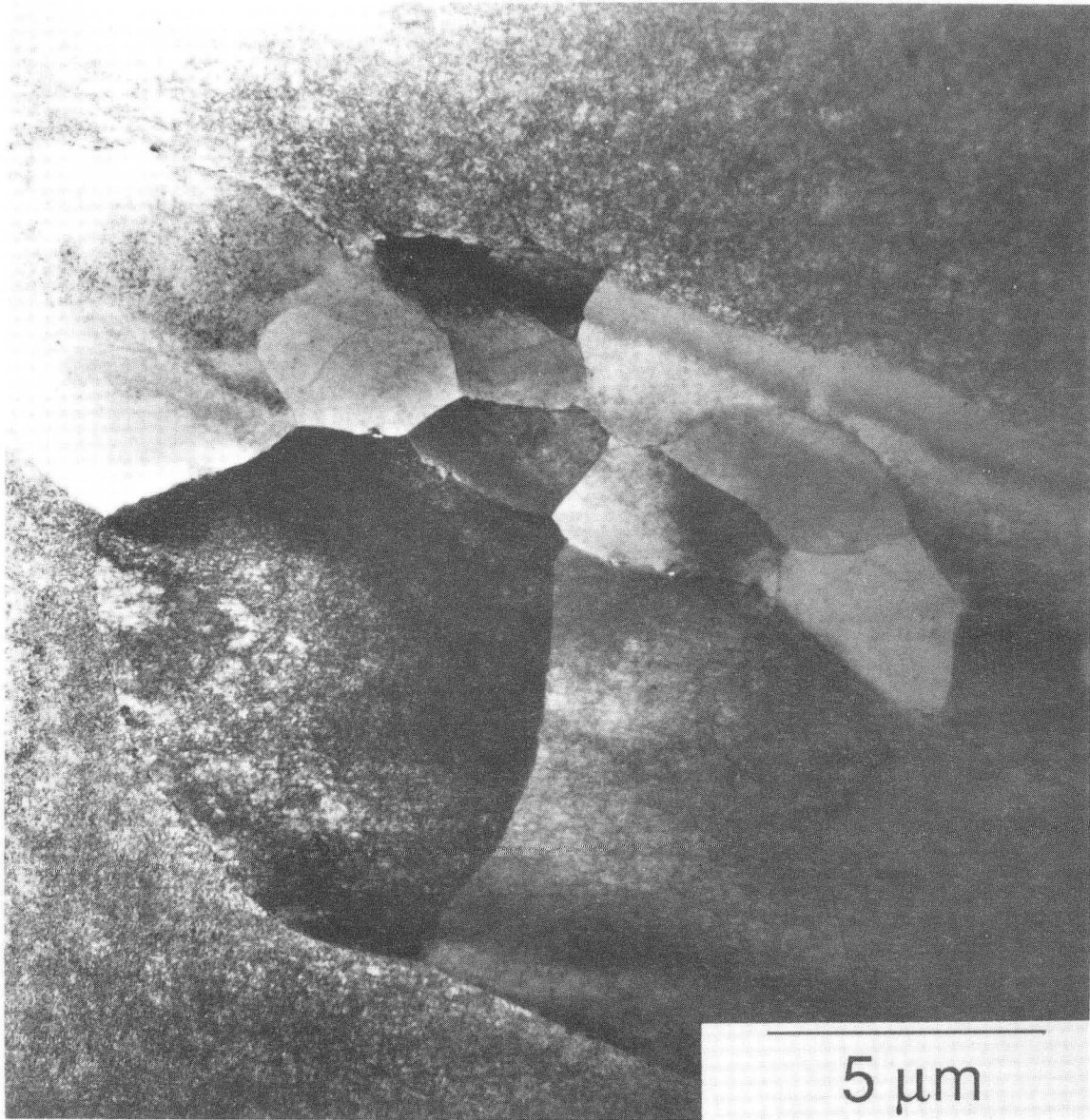


Figure 6: TEM micrograph of the grain structure at quarter-thickness. Note the inhomogeneous distribution of subgrains. Isolated grains composed of subgrains are found between large grains that do not contain subgrains. (XBB 915-4150)

Results from preliminary TEM studies lend further support to the observations made by optical microscopy. Samples in the longitudinal plane of the as-received material show that the two regions differ in subgrain distribution and grain morphology. Extensive subgrain formation is observed in the mid-thickness region as shown in Figure 5. The subgrains are homogeneously distributed, despite a relatively large range of grain thicknesses exhibited at this region; this grain thickness variation has been mentioned above (Figure 4). Figure 5 illustrates the subgrain formation at mid-thickness within one of the thicker grains (Figure 5a) and within a collection of thinner grains (Figure 5b). At quarter-thickness, however, subgrain formation is limited and inhomogeneously distributed (Figure 6); isolated grains composed of subgrains are found between large grains that do not contain subgrains.

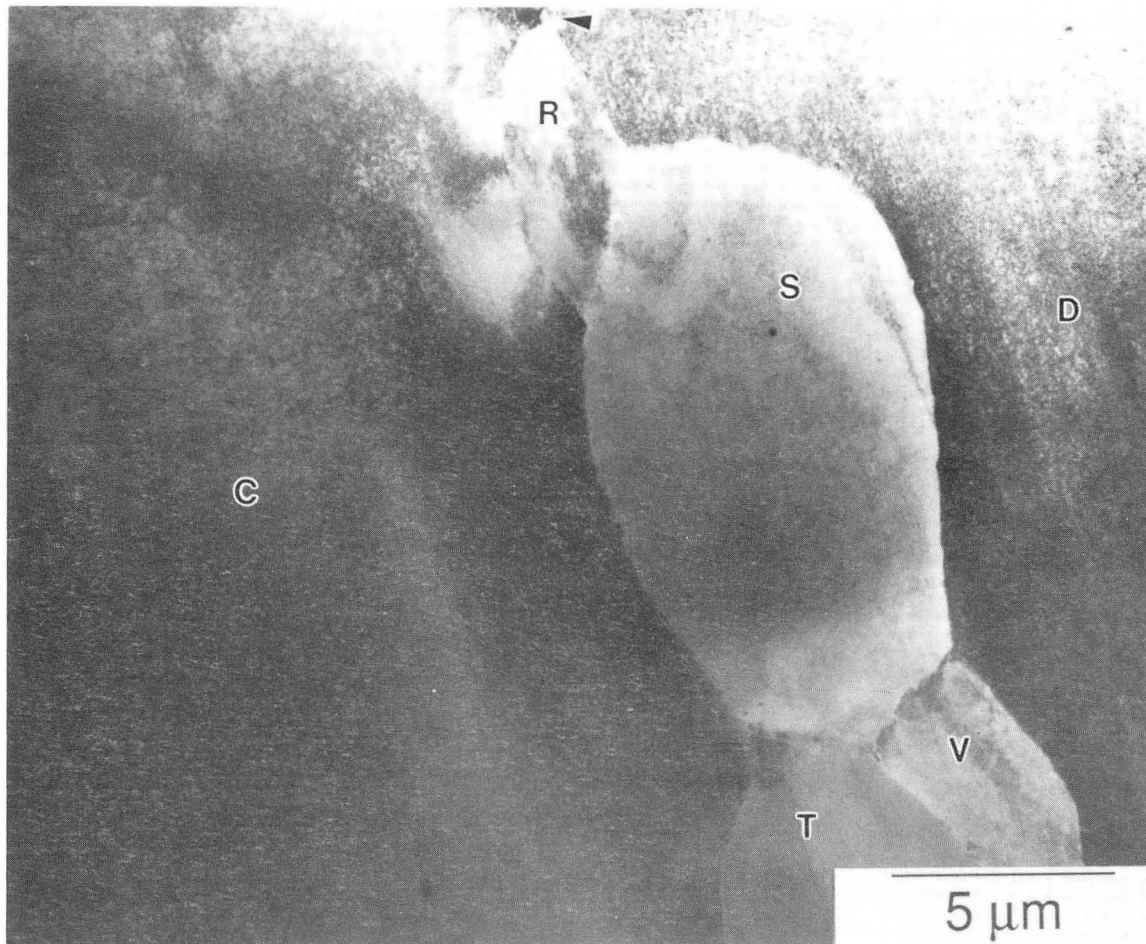


Figure 7: TEM micrograph at quarter-thickness showing the formation of small grains (R, S, T, V) between large grains (C and D). The original grain boundary is denoted by an arrow. (XBB 915-4151)

The grain size/shape distributions in the two regions are also dissimilar. Flat and elongated grains are seen at mid-thickness (Figures 5a and 5b). As previously discussed, these grains also vary in thickness. In contrast, the quarter-thickness grains appear more equiaxed and possess a greater variation in grain size (Figures 6 and 7) than those in Figure 5b. Smaller grains such as R and S are typically surrounded by large grains (C and D) in this region (Figure 7). Many of these smaller grains are situated between large grains (Figure 7).

The microstructural differences discussed above will undoubtedly affect the volume fraction of grain boundaries. In addition, the degree of grain and subgrain boundary misorientation should also be affected. It appears that these features play a strong role in determining the work hardening behavior; all other intragranular features are ruled out since the two microstructures contain the same constituents and receive the same aging treatment. It is speculated that the grain and subgrain boundaries dictate the work hardening behavior by governing the manner by which slip is transmitted from grain to grain. Evidence of such an interplay has been observed through an optical slip-relief study where greater elongations are found to be coupled with a greater tendency for out-of-plane rotation of subgrains.^[14]

The results accumulated and discussed above are promising as they imply that a practical means may exist by which improvements in the work hardening behavior can be obtained through selected modifications of the polygranular microstructure. Continuing TEM studies on both as-received and prestrained specimens will attempt to verify and establish that aspect of the microstructure responsible for controlling the work hardening behavior.

Conclusion

Preliminary microscopy studies on the two microstructures evidenced in the alloy Vintage III 2090-T81 reveal a difference in the size and distribution of grains and subgrains. These differences in the polygranular structure are believed to be partially responsible for the varying temperature responses observed in the work hardening characteristic. It is speculated that the degree of grain boundary misorientation may also be important. The microstructural influence on the work hardening at the polygranular level implies the existence of an achievable means by which the work hardening and, to some extent, the subsequent strength and toughness can be controlled by modifications of the grain structure.

Acknowledgements

The authors thank the Alcoa Technical Center for providing the materials for this research. This study was supported by the Director, Office of Energy Research, Office of Basic Energy Science, Material Sciences Division of the U.S. Department of Energy under Contract No. DE-AC03-76SF00098. D. Chu was supported under a National Science Foundation Graduate Fellowship for the entire period of this work.

References

1. D. Chu and J.W. Morris, Jr., Metall. Trans. A, to be published Aug 1991.
2. D. Chu: Master's Thesis, LBL 30170, University of California, Berkeley, CA, Dec. 1990.
3. D. Chu and J.W. Morris, Jr.: in "Light Weight Alloys for Aerospace Applications", E.W. Lee, ed., TMS, Warrendale, PA, 1991.
4. E.S. Balmuth and R. Schmidt: in Aluminum-Lithium Alloys, T.H. Sanders, Jr. and E.A. Starke, Jr. eds., TMS-AIME, New York, NY, 1981, pp. 69-88.
5. G.H. Narayanan, B.L. Wilson, W.E. Quist, and A.L. Wingert: Technical Report No. D6-51411, The Boeing Company, Seattle, WA, Aug. 1982.
6. J. Glazer: Ph.D. Thesis, LBL-27607, University of California, Berkeley, CA, July 1989.
7. W.E. Quist and G.H. Narayanan: in Treatise on Materials Science and Technology: Aluminum Alloys - Contemporary Research and Applications, A.K. Vasudevan and R.D. Doherty, eds., Academic Press, Inc., San Diego, CA, 1989, vol. 31, p. 219-54.
8. J. Glazer, S.L. Verzasconi, E.N. Dalder, W. Yu, R.A. Emigh, R.O. Ritchie, and J.W. Morris, Jr.: Adv. Cryog. Eng., 1986, vol. 32, pp. 397-404.
9. R.C. Dorward: Scripta Metall., 1986, vol. 20, pp. 1379-83.
10. J. Glazer, S.L. Verzasconi, R.R. Sawtell, and J.W. Morris, Jr.: Metall. Trans. A, 1987, vol. 18A, pp. 1695-701.
11. D. Webster: Metall. Trans. A, 1987, vol.18A, pp. 2181-93.
12. K.T.V. Rao, W. Yu, and R.O. Ritchie: Metall. Trans. A, 1989, vol. 20A, pp. 485-97.
13. K.T.V. Rao and R.O. Ritchie: Acta Metall. Mater., 1990, vol. 38, pp. 2309-26.
14. D. Yao, D. Chu, and J.W. Morris, Jr.: in Light Weight Alloys for Aerospace Applications, E.W. Lee, ed., TMS, Warrendale, PA, 1991.
15. A.H. Cottrell and R.J. Stokes: Proc. Roy. Soc. A, 1955, vol. 233, pp. 17-34.
16. K.V. Jata and E.A. Starke, Jr.: Scripta Metall., 1988, vol. 22, pp. 1553-56.

17. K. Welpmann, Y.T. Lee, and M. Peters: Mater. Sci. and Eng. A, 1990, vol. 129, pp. 21-34.
18. S.A. Vincent: Master's Thesis, LBL 24443, University of California, Berkeley, CA, Dec. 1987.
19. P.E. Johnson, J.H. Schmitt, S.A. Vincent, and J.W. Morris, Jr.: Scripta Metall., 1990, vol. 24, pp. 1447-52.
20. P.E. Johnson: PhD Thesis, University of California, Berkeley, CA, June 1991.
21. R.J. Bucci, R.C. Malcolm, E.L. Colvin, S.J. Murtha, and R.S. James: Final Report No. NSWC TR 89-106, Aluminum Company of America, Alcoa Center, PA, Sept. 1989.
22. A.K. Vasudèvan, W.G. Fricke, Jr., R.C. Malcolm, R.J. Bucci, M.A. Przystupa, and F. Barlat: Metall. Trans. A, 1988, vol. 19A, pp. 731-32.
23. A.K. Vasudèvan, W.G. Fricke, Jr., M.A. Przystupa, and S. Panchanadeeswaran: in 8th Int. Conf. on Textures of Materials, J.S. Kallend and G. Gottstein, eds., TMS, Warrendale, PA, 1988, pp. 1071-77.
24. R.J. Rioja, B.A. Cheney, R.S. James, J.T. Staley, and J.A. Bowers: Structure-Property Relationships in Al-Li Alloys: Plate and Sheet Products, Aluminum Corporation of America, Alcoa Center, PA, March 1989.

*LAWRENCE BERKELEY LABORATORY
CENTER FOR ADVANCED MATERIALS
1 CYCLOTRON ROAD
BERKELEY, CALIFORNIA 94720*