

UC Irvine

UC Irvine Previously Published Works

Title

Electron ptychographic microscopy for three-dimensional imaging

Permalink

<https://escholarship.org/uc/item/3q16d4v0>

Journal

Nature Communications, 8(1)

ISSN

2041-1723

Authors

Gao, Si

Wang, Peng

Zhang, Fucai

et al.

Publication Date

2017

DOI

10.1038/s41467-017-00150-1

Copyright Information

This work is made available under the terms of a Creative Commons Attribution License, available at <https://creativecommons.org/licenses/by/4.0/>

Peer reviewed

ARTICLE

DOI: 10.1038/s41467-017-00150-1

OPEN

Electron ptychographic microscopy for three-dimensional imaging

Si Gao¹, Peng Wang^{1,2}, Fucai Zhang^{3,4,5}, Gerardo T. Martinez⁶, Peter D. Nellist⁶, Xiaoqing Pan^{1,7,8} & Angus I. Kirkland^{6,9}

Knowing the three-dimensional structural information of materials at the nanometer scale is essential to understanding complex material properties. Electron tomography retrieves three-dimensional structural information using a tilt series of two-dimensional images. In this paper, we report an alternative combination of electron ptychography with the inverse multislice method. We demonstrate depth sectioning of a nanostructured material into slices with 0.34 nm lateral resolution and with a corresponding depth resolution of about 24–30 nm. This three-dimensional imaging method has potential applications for the three-dimensional structure determination of a range of objects, ranging from inorganic nanostructures to biological macromolecules.

¹National Laboratory of Solid State Microstructures, College of Engineering and Applied Sciences, Collaborative Innovation Center of Advanced Microstructures and Center for the Microstructures of Quantum Materials, Nanjing University, Nanjing 210093, People's Republic of China. ²Research Center for Environmental Nanotechnology, Nanjing University, Nanjing 210093, People's Republic of China. ³Department of Electrical and Electronic Engineering, Southern University of Science and Technology, Shenzhen 518055, People's Republic of China. ⁴London Centre for Nanotechnology, London WC1H 0AH, UK. ⁵Research Complex at Harwell, Harwell Oxford Campus, Didcot OX11 0FA, UK. ⁶Department of Materials, University of Oxford, Parks Road, Oxford OX1 3PH, UK. ⁷Department of Chemical Engineering and Materials Science, University of California, Irvine, CA 92697, USA. ⁸Department of Physics and Astronomy, University of California, Irvine, CA 92697, USA. ⁹Electron Physical Sciences Imaging Centre, Diamond Lightsource, Diamond House, Oxfordshire, Didcot OX11 0DE, UK. Correspondence and requests for materials should be addressed to P.W. (email: wangpeng@nju.edu.cn) or to F.Z. (email: zhangfc@sustc.edu.cn)

Techniques enabling three-dimensional (3D) structure analysis, such as X-ray¹ or neutron diffraction², and electron microscopy³, are invaluable tools for understanding the complex relationship between structure and function in materials. Transmission electron microscopy (TEM) has been extensively used for structural analysis in both physical and biological sciences for many decades, where under carefully defined optical conditions, the structure of 3D objects can be interpreted from two-dimensional (2D) images^{3–5}. Electron tomography in the TEM is a similarly well-established method and has been used to solve a large range of complex structures in biology and materials science^{6–8}. In the latter discipline, specific examples include Ag clusters⁹, CdTe nanoparticles¹⁰, morphologically controlled Au rods¹¹, and Pt-Co fuel cell material¹². The success of this method relies on the validity of the projection condition^{13, 14}, which allows back projection of 2D images recorded at a series of specimen tilt angles to reconstruct a 3D structure. However, for thicker specimens, the projection approximation can break down primarily as a consequence of multiple interactions of the electrons with the sample. Furthermore, the resolution of a reconstructed tomogram is generally governed by the number of projections and the angular coverage of the data set acquired¹⁵. For radiation sensitive specimens, the total electron dose budget frequently determines the maximum number of projections that can be recorded, potentially leading to a degradation in the 3D reconstruction resolution, a limitation that is of particular significance for several classes technologically important materials^{16, 17}.

Ptychography was originally suggested by Hoppe¹⁸ and as proposed was based on a 2D multiplicative approximation¹⁹ to

model the interaction of the probe and the specimen. For 3D imaging, ptychography has subsequently been extended to provide projection images using tomographic tilt series in the X-ray regime¹³. Importantly, for X-rays, the projection approximation is generally valid even for a relatively thick specimens at high tilt angles, before significant multiple scattering occurs. In contrast, this approximation breaks down at modest specimen thickness for electrons due to their larger interaction cross section³, which leads to multiple scattering. This multiple scattering is often accounted for in image simulations using the multislice method^{20, 21}, and an inverse multislice (invMS) method has been recently incorporated into ptychographic reconstruction algorithms, whereby the exit surface wave function of an object is calculated slice by slice as the wave is transmitted through the sample. The feasibility of this approach has been demonstrated for visible light^{22, 23} and X-rays²⁴ but not for electrons where it is potentially most valuable due to strong multiple scattering³.

Ptychographic coherent diffractive imaging in 2D has been extensively implemented using both visible light²⁵ and X-rays^{13, 26}. Using electrons, Nellist et al.²⁷ first demonstrated atomic resolution in a ptychographic reconstruction using a focused probe. More recently, Pennycook et al.²⁸ have reconstructed ptychographic data, also using a focused convergent electron probe by sampling a larger volume of the four-dimensional data set and making use of the entire double overlap regions, where only one scattered disk overlaps with the zero-order disk. Yang et al.²⁹ have further advanced this method to larger fields of view by using a high-speed pixelated detector to record the data³⁰ and a Wigner distribution deconvolution

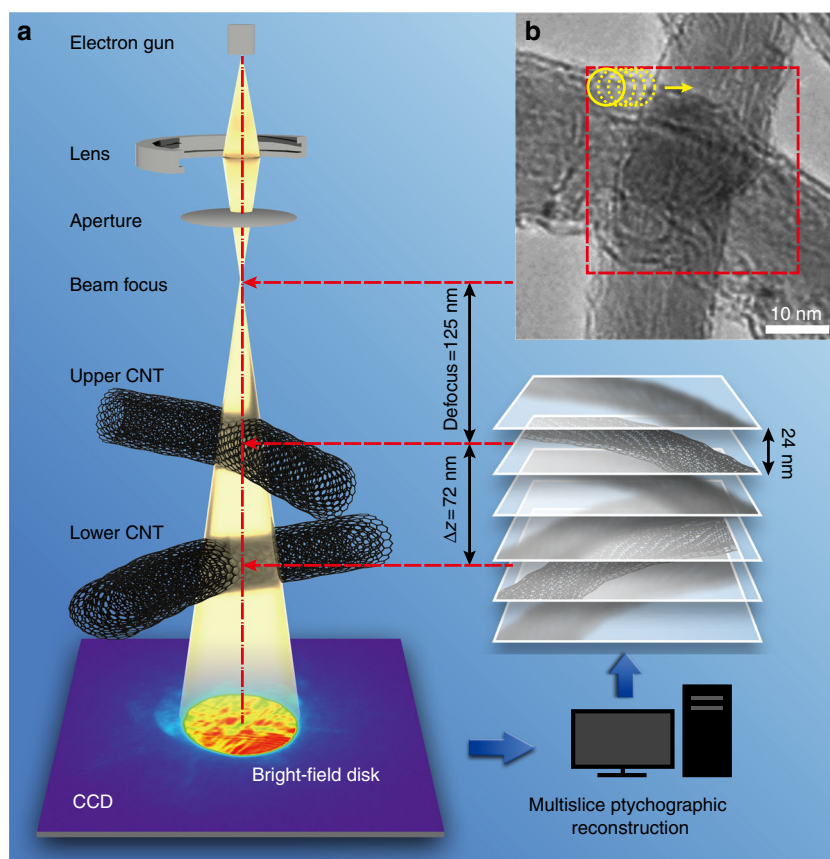


Fig. 1 Schematic of the experimental set-up. **a** Optical geometry of the experiment. **b** TEM image of the CNTs; the red box indicates the region from which ptychographic data were recorded. The upper tube was placed at a distance, $df = 125$ nm below the probe focus. The height separation of the tubes is $\Delta z = 72$ nm

(WDD)¹⁹. This work demonstrated that it was possible to obtain 3D structural information from a weakly scattering sample by directly accessing specific depths in the WDD reconstruction. Furthermore, focused probes are compatible with the geometry required for incoherent imaging and so can be used simultaneously to record Z-contrast data. An alternative geometry that can be used to retrieve the object transmission function from an array of far-field diffraction patterns is to record these by moving a known, finite-sized (defocused) probe over a sample with partial

overlap of the probe positions. This overlap of illuminated regions provides redundancy that allows the iterative phasing algorithm to converge robustly and rapidly^{31, 32}. Using this geometry, Humphry et al.³³ have demonstrated the recovery of the object function of gold nanoparticles at a resolution of 0.236 nm at 30 kV and Putkunz et al.³⁴ and D'Alfonso et al.³⁵ have extended the attainable resolution to 0.08 nm at 300 kV. Wang et al.³⁶ have also demonstrated imaging of B columns in LaB₆ crystals at a similar resolution with high phase sensitivity using a defocused probe. Importantly, the results reported in these previous studies using both focused and defocused probes make use of a multiplicative approximation. However, this approximation breaks down with increasing specimen thickness, potentially limiting the application of ptychography in studies of many technologically important samples in which significant multiple scattering occurs.

In this paper, we report the use of the invMS approach to retrieve 3D structural information through electron ptychography from graphitized multiwall carbon nanotubes (CNTs) with about 24–30 nm depth resolution and a lateral resolution of 0.34 nm. Furthermore, we use simulations to show that the invMS approach enables depth-resolved sectioning, which is more robust to multiple scattering when compared to the WDD approach.

Results

Data acquisition and 3D reconstruction. The invMS electron ptychography experiment was conducted at 60 kV using a (S) TEM Titan³ instrument fitted with a field emission source and probe forming aberration corrector. For the data sets described, the probe convergence semi-angle was 22 mrad. It is important to recognize that in conventional high-angle annular dark field STEM imaging this illumination semi-angle gives a diffraction-limited resolution of 0.11 nm for a focused probe in the absence of effects due to partial spatial coherence^{37, 38}. The sample examined consisted of two intercrossing CNTs with a separation of about $\Delta z = 72$ nm as shown in Fig. 1. This separation was estimated from the condition of minimum contrast⁵ in images of each CNT as shown in Supplementary Fig. 1. The diameters of the upper and lower CNTs were measured as 22 and 18 nm, respectively. The upper tube was placed at a distance, $df = 125$ nm below the probe focus (Fig. 1). A ptychographic data set was subsequently acquired with the incident probe rastered over the region of the sample indicated in Fig. 1b in a grid of 20×20 positions with a step size of 1.6 nm. A subarray of 6×6 diffraction patterns from the data set is shown as an example in Supplementary Fig. 2. An initial estimate of the illumination wavefield incident on the first slice, which is defined at 24 nm above the uppermost CNT is shown in Supplementary Fig. 3. The method used to estimate the initial probe is described in Supplementary Note 1.

Figure 2a–f shows the reconstructed phase from each of six slices, separated along the incident beam direction by 24 nm with

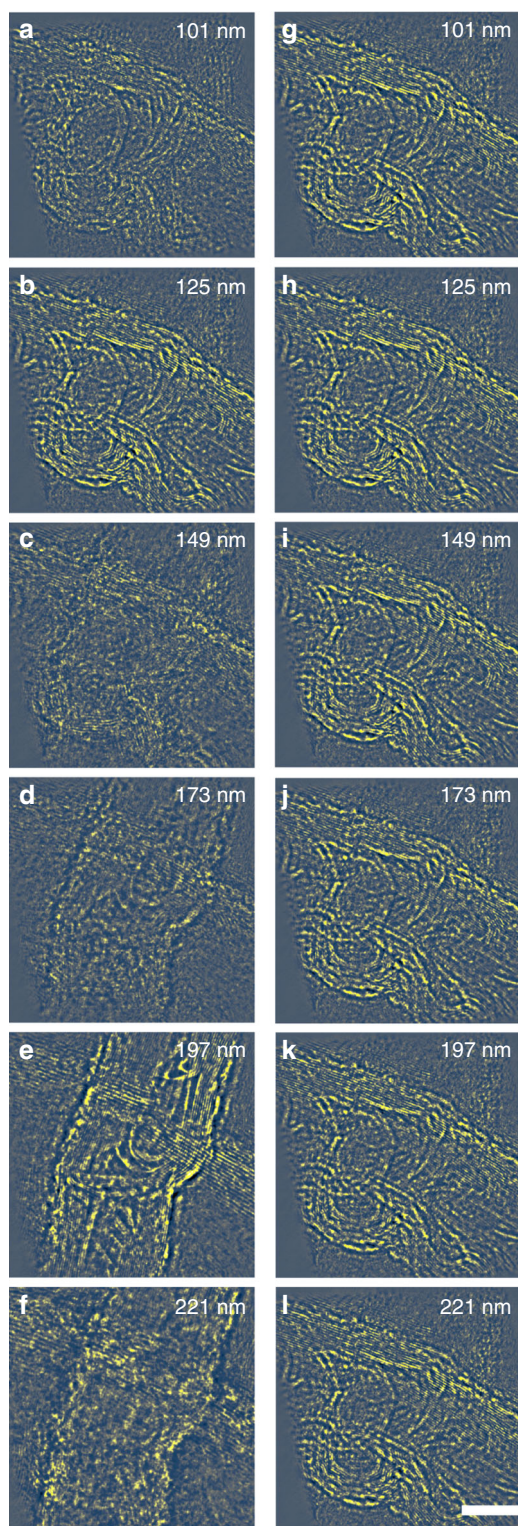


Fig. 2 Comparison between reconstruction and propagation effects.

a–f Reconstructed phases at six positions along the optical axis within the sample. **b** and **e** show slices where the upper and lower CNTs are at the Gaussian focus, respectively. Pixel size = 17 pm; image size = 2400×2400 pixels. **g–l** Fresnel propagation of the reconstructed complex object image phase in **b** to the appropriate sample height. The invMS method shows a depth sensitivity different from that due to simple Fresnel propagation of the reconstructed exit wave function. For example, the lower CNT, becomes visible using invMS optical sectioning in **e**, but remains invisible after applying Fresnel propagation in **k**. The depth value at the *top-right* corner in each figure is defined as the distance from the probe focal point. The 10 nm scale bar is the same for all figures

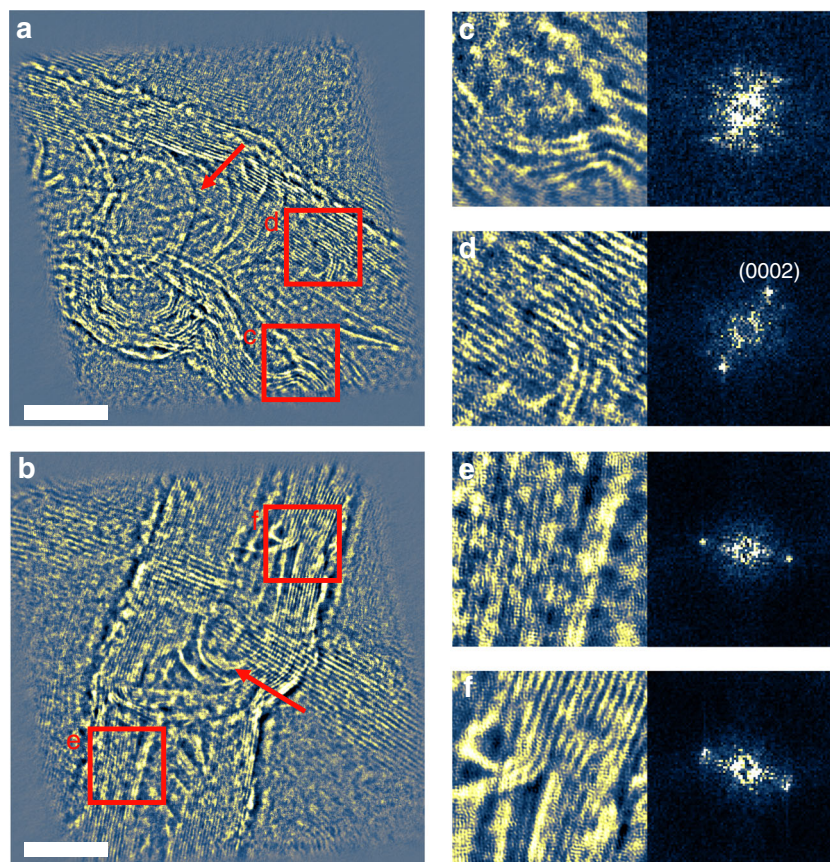


Fig. 3 Reconstructed phase in focus. **a, b** Phase of the upper and lower CNTs at Gaussian focus, respectively. **c-f** Magnified views of regions indicated in **a** and **b** together with calculated power spectra. A lattice spacing of 0.34 nm in both CNTs is evident in both image and spectrum. Arrows indicate the compartment layers of the interior tube. Pixel size is 17 pm and the image size of **a** and **b** is 2400 × 2400 pixels. The 10 nm scale bar is the same for **a-b**

a pixel size of 17 pm and an image field of view of 2400 × 2400 pixels. The corresponding modulus from six slices of the two CNTs are numbered and displayed sequentially (Supplementary Fig. 4). Figure 2b, e shows the highest contrast, corresponding to the optimal focal planes for the upper and lower CNTs, respectively. An animation of the full stack of reconstructed phase images can be found in Supplementary Movie 1. It should be emphasized that this is a true optical sectioning effect enabled by 3D ptychography using the invMS approach and is not equivalent to a Fresnel propagation of the exit wave as in phase contrast high-resolution TEM³⁹. As shown in Fig. 2g-l, Fresnel propagation of the complex transmission function retrieved using a ptychographic reconstruction at depths of 125 nm, where the contrast for the upper CNT is highest, does not recover the phase of the lower tube located at a different depth. Therefore, each recovered phase from 3D ptychographical optical sectioning provides a unique identification of the 3D structure at a particular depth.

The 3D ptychographic reconstruction described allows optical sectioning with potential applications to the removal of out-of-focus features in conventional 2D ptychographic imaging as illustrated in Supplementary Fig. 5. The normalized root-mean-square error metric was calculated in the diffraction plane per iteration (Supplementary Fig. 6), which shows rapid convergence. Furthermore, the experimental geometry required is relatively simple with no requirement for mechanical tilting of the sample as in electron tomography^{13, 14} or accurate scanning at different depths along the optical axis as in scanning confocal electron microscopy^{40, 41}. However, it may still be useful to combine the approach described with specimen rotation to

recover 3D data from very strongly scattering specimens at high resolution, for example, reconstruction of micron thick biological samples⁴², although we note that recent advances in model-based tomographic reconstructions can negate the need for back projection⁴³. Although the depth resolution demonstrated in these initial results as described is not yet comparable to that obtained using electron tomography⁴⁴, the data acquisition process is faster and minimal data post processing is required to recover quantitative 3D information. With a larger convergence angle, for example, 71 mrad as previously reported⁴⁵, a depth resolution of 1.9 nm could be achieved. Potentially, the greatest advantage of this method lies in its compatibility with in situ sample holders, which opens up the possibility of quantitative 3D phase reconstruction for samples in liquid⁴⁶, gas⁴⁷, or cryo⁴⁸ environments, without the requirement for a wide gap objective lens pole piece suitable for tomography.

Ptychographic reconstruction also enables post-reconstruction numerical focusing. Figure 3a, b shows the reconstructed phases of two CNTs at depths of 125 and 197 nm, respectively. The tube walls show lattice fringes at 0.34 nm and compartment layers (indicated by arrows) are observed in the interior of the tubes, which suggests that they are bamboo-shaped multiwalled CNT structures⁴⁹. Figure 3c-f shows magnified views of subregions indicated by the red squares in Fig. 3a, b, respectively, together with their associated power spectra. In Fig. 3c, the power spectrum shows three pairs of reflections arising from the bent tube with a spacing of 0.34 nm. All power spectra shown in Fig. 3c-f calculated from four subregions in both slices show the principal (0002) reflection corresponding to the wall spacing of 0.34 nm⁵⁰. However, as the CNTs are curved and misoriented

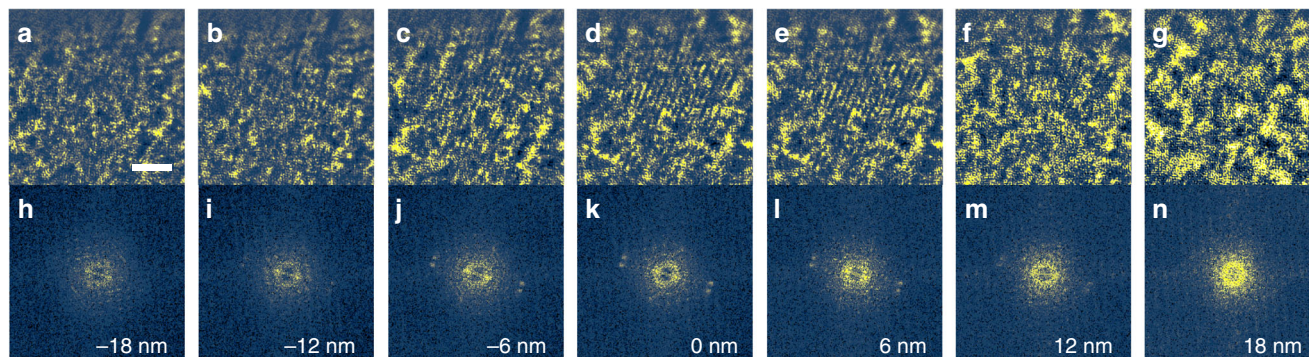


Fig. 4 Evaluation of depth resolution. **a–g** Reconstructed phase using seven slices from a 21-slice reconstruction with a step of 6 nm along the optical axis and **h–n**, corresponding power spectra. Lattice fringes, (0002) with a spacing of 0.34 nm and their corresponding reflections fade outside a sample height range from -12 to 12 nm. This confirms a depth resolution of about 24–30 nm for the spatial frequency corresponding to the 0.34 nm lattice spacing. The 2 nm scale bar is the same for **a–g**. The values in **h–n** are defined as the distance from the focus plane of the lower CNT, which is at depth of 197 nm

with respect to the incident beam direction, other higher-order reflections are not resolved⁵¹.

An additional advantage of post-acquisition focusing lies in the fact that it readily provides data at an optimal defocus, which is beneficial for imaging beam sensitive materials where it is challenging to identify the optimum defocus under low-dose conditions⁵². Hence, this 3D feature of electron ptychography may facilitate low-dose 3D imaging of beam-sensitive specimens, especially in the life sciences and in studies of soft matter. Compared to focused probe experiments^{53, 54}, the pixel size and image size of the reconstructed image in the current ptychographic geometry is dependent on the sampling of the diffraction patterns at the detector plane, the illumination size and the number of scanning positions. In our current work as reported, we have reconstructed a series of 2400×2400 pixel images with a pixel size of 17 pm from an array of 20×20 diffraction patterns. With current and proposed high-speed, high-sensitivity detectors operating at 1000–10,000 frames per second⁵⁵, it should be possible to record the same data at time intervals corresponding to important chemical dynamic processes, for example, in catalysis.

Theoretical lateral and depth resolutions. To theoretically describe both lateral resolution and depth sectioning, the Ewald sphere construction for the optical configuration was used as shown in Supplementary Fig. 7 (see Supplementary Note 2 for details). The lateral and depth resolution in ptychography²⁴ with an incident plane wave along the optic axis are given as

$$r_x = r_y = \frac{1}{k_{x,\max}} = \frac{\lambda}{\sin(\Theta_{\max})}, r_z = \frac{1}{k_{z,\max}} = \frac{\lambda}{2\sin^2(\Theta_{\max}/2)} \quad (1)$$

where r_x , r_y , and r_z represent the spatial resolution in the x , y , and z directions, respectively, Θ_{\max} is the maximum scattering angle used in the reconstruction and λ is the electron wavelength. $k_{x,\max}$ and $k_{y,\max}$ define the maximum lateral distances on the Ewald surface. In the experiments described, a convergent incident beam was used. Due to the low signal-to-noise ratio outside the bright-field (BF) disk at the detector plane, only the central BF disk was used for reconstruction. With curved illumination as in this experiment, the effective maximum scattering angle is twice as large as that of the BF disk in the k_x and k_y directions²⁷. Therefore, the boundary of the contrast transfer function for 3D ptychography in reciprocal space using a convergent incident beam with a semi-angle, α for scattering in the BF disk can be

written (as also illustrated in Supplementary Fig. 8) as:

$$k_z = \begin{cases} \pm \left(\frac{\cos\alpha - \sqrt{1 - (\lambda k_x - \sin\alpha)^2}}{\lambda} \right), & k_x \geq 0 \\ \pm \left(\frac{\cos\alpha - \sqrt{1 - (\lambda k_x + \sin\alpha)^2}}{\lambda} \right), & k_x < 0 \end{cases} \quad (2)$$

with lateral and depth resolutions given by

$$r'_x = r'_y = \frac{1}{k_{x,\max}} = \frac{\lambda}{2\sin(\alpha)} \quad (3)$$

and

$$r'_{z,k_x} = \frac{1}{k_{z,k_x}} = \frac{\lambda}{\left| \cos\alpha - \sqrt{1 - (\lambda|k_x| - \sin\alpha)^2} \right|} \quad \text{for a given } k_x \quad (4)$$

In our experiment, $\alpha = 22$ mrad and $\lambda = 4.87$ pm at 60 kV yielding lateral resolution $r'_x = r'_y = 0.11$ nm, which are, improved by a factor of two compared to the limit defined by Eq. 1. Apart from the resolved (0002) reflection with a 0.34 nm spacing, our experimental reconstructions did not resolve other higher-order reflections, which might be due either to the fact that the CNTs are curved and misoriented with respect to the incident beam direction⁵¹ or to the effects of partial coherence and other instrumental instabilities⁵⁶. However, to accurately evaluate the lateral resolution, a sample consisting of 3D CNT bundles is not optimal when compared to single crystals with precisely defined lattice spacings (for example, Si and LaB_6)^{36, 38}. For this reason, further detailed investigations of both experimental lateral and depth resolutions achievable using this method are currently in progress.

Equation 4 indicates that depth resolution in real space depends on the inverse of the thickness in the region of accessible reciprocal space for a given spatial frequency k_x . To evaluate depth resolution experimentally, the region of the CNT bundle showing (0002) lattice fringes with a spacing of 0.34 nm was used in a reconstruction with a finer slice separation of 6 nm as shown in Fig. 4. According to Eq. 2, the boundary of k_z for the spatial frequency corresponding to the (0002) reflection gives a depth resolution of 22.9 nm, which is consistent with the experimental observation of a fading in the contrast of both

lattice fringes and their corresponding reflections in the power spectrum within a sample height range of about 24–30 nm.

Comparison of invMS and WDD approaches. To demonstrate that the primary benefit of invMS ptychography compared to the WDD used by Yang et al.²⁹ is the explicit handling of multiple scattering in thick samples, we have carried out simulations using the multislice method⁵⁷. The simulations show that there is a sample thickness limit even for light element materials, such as that used in the present experiment where the invMS can fully accommodate multiple scattering but where the WDD approach cannot. For the sake of computational cost, we modeled a small area of 3×3 nm from the overlapping region as shown in Supplementary Fig. 9. In contrast to the work of Yang et al.²⁹, the sample used here consisted of multiwalled CNTs with a thickness of about 24 nm that were further annealed at 3680 °C in an inert atmosphere. This process removes both microstructural defects as well as the catalyst particles within CNTs and enhances their graphitic structure⁵⁸. Therefore, to model the simulated area in the overlapping region, two single crystalline carbon nano-rods (CNRs) with a graphitic structure and a similar thickness of 24 nm each, corresponding to the experimental geometry were constructed (see Supplementary Note 3 for the simulation details). The optical sectioning results are shown in Supplementary Fig. 11, upper panel. The WDD reconstruction shows contrast variations along the depth direction and a noticeable contrast reversal in the reconstructed phase data (Supplementary Fig. 12) for two CNRs, which may suggest that WDD has already failed due to dynamical effects at this sample thickness. For imaging at 60 kV, the example of two 24 nm thick graphite rods used would be expected to exhibit a dynamical scattering behavior as demonstrated by the simulation in Supplementary Fig. 13 and therefore violate the multiplicative approximation. Hence, the contrast reversal observed in WDD optical sectioning is likely due to dynamical scattering. However, this is not the case for reconstructions using the invMS approach. It can be seen that invMS reconstruction recovers more faithful phase data (Supplementary Fig. 11) across various depths and was able to discriminate the two CNRs clearly at different heights. Therefore, while for 2D imaging the WDD has produced impressive results at atomic resolution, its 3D optical sectioning capability for thick samples is limited by multiple scattering. This is consistent with the theory underlying the WDD, which makes use of the multiplicative approximation. For the experimental geometry used here, two $\langle 0001 \rangle$ oriented graphite rods with a 24 nm thickness, the multiplicative assumption appears to break down at 60 kV, although we note that recent results using the WDD provide faithful reconstructions from crystalline samples at 200 kV⁵⁹. Overall, the invMS approach provides depth-resolved sectioning, which is robust to multiple scattering, although the attainable resolution has yet to be shown to be competitive with that achieved using the WDD and a focused probe.

Discussion

Compared to experiments using a focused probe and an integrating high-speed pixelated detector³⁰ as used to record data for the recent WDD work^{19, 29}, the defocused probe used in invMS is incompatible with the optical conditions required for annular dark-field imaging. However, despite this disadvantage, the data acquisition described here does not necessarily require a high-speed pixelated detector³⁰ as used successfully in the WDD experiments²⁹, the speed of which can practically limit the number of probe positions and hence the size of the final reconstruction in pixels. In contrast, the size of the current

reconstruction can be as large as 2400×2400 pixels at a sampling of 17 pm per pixel.

In future, we anticipate extending this approach by using direct counting electron detectors that are designed to have a very wide dynamic range⁶⁰. Using this type of detector, we expect that much weaker signals can be detected from weakly scattering objects under low-dose conditions and also that the signal in the dark-field region outside the BF disk will be recorded with useable signal to noise ratio. In this geometry, the scattering angle used in the reconstruction will be extended to the maximum collection angle acquired by the detector, which will improve both lateral and depth resolution.

In conclusion, we have demonstrated for the first time that defocused probe electron ptychography using an invMS method can provide depth-sectioned information from a 3D complex transmission function of a thick sample (including both amplitude and phase). The method provides high contrast, quantitative phase maps at close to atomic lateral resolution and with a few tens of nanometers depth resolution. This 3D electron ptychographic method is potentially applicable to in situ TEM experiments as it does not require mechanical tilting of the specimen through large angles as is the case for electron tomography. The additional capability to carry out post-acquisition focusing of the reconstruction coupled with high-dose efficiency⁶¹ particularly when coupled to high-speed and high-sensitivity detectors⁵⁵ should provide a route to structural determination, using the recovered, fully quantitative ptychographic phase from thicker, radiation sensitive specimens. In the future, we anticipate that this method will find a wide range of applications in 3D structure determination of thick objects, ranging from inorganic nanostructures, heterostructures or ferroic domain structures to biological macromolecules.

Methods

Materials. The studies reported used a commercially available graphitized multiwall CNT powder (698849, Sigma-Aldrich), which was produced by chemical vapor deposition and further annealed in an inert atmosphere up to a temperature of 3687 °C. This high-temperature process efficiently graphitized the multiwall CNTs⁵⁸. The powder was first suspended in water and then ultrasonicated for 10 min before being drop-cast directly onto holey carbon-coated TEM grids. In order to disperse the tubes with different geometries, dropping and drying was repeated several times. The two tubes selected for these experiments had a height separation, $\Delta z = 72$ nm measured by the minimum contrast for the two tubes as shown in Supplementary Fig. 1.

3D ptychography using the invMS approach. The iterative method for reconstruction used the ptychography algorithm with the invMS approach²² is summarized below.

The multislice method is widely used in electron microscope simulations. The object is considered as a series of N slices, $O_n(\mathbf{r})$ ($n = 1 \dots N$), separated by distances Δz_m ($m = 1 \dots N - 1$), and the wavefront exiting the specimen is calculated using a series of multiplications and Fresnel propagations between the slices. We label the probe as $P_1(\mathbf{r} - \mathbf{r}_j)$, where \mathbf{r}_j indicates the relative shift of the probe and object and the subscript 1 indicates that the probe is located at the entrance plane of the first slice of object. The corresponding diffraction pattern acquired in the experiment is labeled, I_j .

For the iteration, we use I_j to update both the probe and object, first calculating the exit wave for the first slice of the object as $\psi_1 = P_1(\mathbf{r} - \mathbf{r}_j) \times O_1(\mathbf{r})$. For brevity, we subsequently omit the coordinate, \mathbf{r} .

The exit wave is subsequently propagated to the entrance plane of the second slice using $P_2 = \text{Prop}_{\Delta z_1}[\psi_1]$, where Δz_1 is the distance between the first and second slices. These two steps are recursively continued to finally yield the wave at the exit plane of the final slice, as ψ_N .

Propagation between slices uses a Fresnel method:

$$\text{Prop}_{\Delta z_1}[\psi_1] = \mathcal{F}^{-1}[\mathcal{F}[\psi_1] \times \exp(i\pi\lambda(k_x^2 + k_y^2) \times \Delta z_1)] \quad (5)$$

where \mathcal{F} and \mathcal{F}^{-1} represent a Fourier transform and inverse Fourier transform, λ is wave length, k_x and k_y are coordinates in diffraction plane.

The propagation of ψ_N to the detector plane is carried out through a Fourier transform, $\Psi = \mathcal{F}[\psi_N]$. The amplitude is then replaced with the experimental data to yield $\Psi' = \frac{\Psi}{|\Psi|} \times \sqrt{I_j}$, where the superscript indicates that the value is updated. Inverse Fourier transform gives $\psi'_N = \mathcal{F}^{-1}[\Psi']$.

Using both the updated exit wave ψ'_N and ψ_N , the last slice and the probe at the last slice is updated as:

$$O'_n = O_n + \alpha \times \frac{P_n^*}{|P_n|_{\max}^2} \times (\psi'_n - \psi_n) \quad (6)$$

$$P'_n = P_n + \alpha \times \frac{O_n^*}{|O_n|_{\max}^2} \times (\psi'_n - \psi_n) \quad (7)$$

where the subscript n indicates the slice number, for the last slice, $n = N$.

In the second step, we inversely propagate the probe at the last slice to the exit plane of the former slice to get $\psi_{N-1} = \text{Prop}_{-\Delta z_{N-1}}[P'_N]$. Following these two steps, all the object slices and probe functions are updated to the first slice, $P_1(\mathbf{r} - \mathbf{r}_j)$.

For the next iteration, the probe is moved to the next position in the data set and the newly updated object slice is used as initial estimate.

For the experimental set-up from which data was collected, the slice thickness can be chosen such that the minimum separation makes two neighboring slices of the object lie outside of the bounds of the multiplicative approximation²². For a finer slice thickness and a larger total slice number, a greater number of unknown pixels in the specimen reconstruction need to be reconstructed. Therefore, both of these values are also dependent on the degree of the redundancy of the ptychographic data, similar to the over-sampling ratio as described elsewhere⁶².

Experimental configuration. Data were recorded at 60 kV using an FEI Titan³ cubed 60–300 electron microscope fitted with a Schottky field emission source. Figure 1a shows a diagram of the optical configuration used. The probe-forming convergence semi-angle was 22 mrad. The upper CNT was placed at a distance, $df = 125$ nm below the probe focal point and was separated from the lower one by a distance of 72 nm along the optical axis as shown in Fig. 1a. The distance, Δz_1 between the sample and the probe crossover was subsequently refined using knowledge of the inter-atomic spacings between the walls of the CNTs. This experimental configuration ensures that the extent of the illumination was well defined and gives a probe diameter of about 5.5 and 8.7 nm at the middle planes of the two CNTs, respectively. A scan coil was used to position the beam in a 20×20 rectangular grid with a nominal pitch of 1.6 nm as shown in Fig. 1b. In this configuration, the overlap between adjacent positions was calculated to be 72.4 and 82.4% for the slices in which the two CNTs were located, sufficient to fulfill the ptychographic sampling requirement for the probe extent, scan steps, and the detector pixel size used³¹. A 6×6 subarray of typical diffraction patterns taken from the 20×20 array is shown as an example in Supplementary Fig. 2. From the over-sampling ratio⁶², the degree of the redundancy of ptychographic data used here is estimated as:

$$\sigma = \frac{\text{Total number of dps}}{2(\text{Pixels in specimen and probe reconstructions})} = 5.9 \quad (8)$$

Data availability. All relevant data are available from the authors on reasonable request.

Received: 9 December 2016 Accepted: 6 June 2017

Published online: 31 July 2017

References

- Maire, E., Merle, P., Peix, G., Baruchel, J. & Buffiere, J.-Y. *X-Ray Tomography in Material Science* (Hermes Science Publications, 2000).
- Kisi, E. H. & Howard, C. J. *Applications of Neutron Powder Diffraction* (Oxford University Press, 2012).
- Williams, D. B. & Carter, C. B. *Transmission Electron Microscopy: A Textbook for Materials Science* 2nd edn (Springer US, 2009).
- Spence, J. C. *Experimental High-Resolution Electron Microscopy* (Oxford Univ. Press, 1988).
- Frank, J. *Three-Dimensional Electron Microscopy of Macromolecular Assemblies: Visualization of Biological Molecules in Their Native State* (Oxford Univ. Press, 2006).
- Lucic, V., Forster, F. & Baumeister, W. Structural studies by electron tomography: from cells to molecules. *Annu. Rev. Biochem.* **74**, 833–865 (2005).
- Midgley, P. A. & Dunin-Borkowski, R. E. Electron tomography and holography in materials science. *Nat. Mater.* **8**, 271–280 (2009).
- Miao, J., Ercius, P. & Billinge, S. J. L. Atomic electron tomography: 3D structures without crystals. *Science* **353**, aaf2157 (2016).
- Van Aert, S., Batenburg, K. J., Rossell, M. D., Erni, R. & Van Tendeloo, G. Three-dimensional atomic imaging of crystalline nanoparticles. *Nature* **470**, 374–377 (2011).
- Bals, S., Van Tendeloo, G. & Kisielowski, C. A new approach for electron tomography: annular dark field transmission electron microscopy. *Adv. Mater.* **18**, 892–895 (2006).
- Goris, B. et al. Atomic-scale determination of surface facets in gold nanorods. *Nat. Mater.* **11**, 930–935 (2012).
- Yu, Y. et al. Three-dimensional tracking and visualization of hundreds of Pt-Co fuel cell nanocatalysts during electrochemical aging. *Nano Lett.* **12**, 4417–4423 (2012).
- Dierolf, M. et al. Ptychographic X-ray computed tomography at the nanoscale. *Nature* **467**, 436–439 (2010).
- McIntosh, R., Nicastro, D. & Mastrorade, D. New views of cells in 3D: an introduction to electron tomography. *Trends Cell Biol.* **15**, 43–51 (2005).
- Midgley, P. A., Ward, E. P., Hungria, A. B. & Thomas, J. M. Nanotomography in the chemical, biological and materials sciences. *Chem. Soc. Rev.* **36**, 1477–1494 (2007).
- Jinnai, H. & Spontal, R. J. Transmission electron microtomography in polymer research. *Polymer* **50**, 1067–1087 (2009).
- McEwen, B. F., Downing, K. H. & Glaeser, R. M. The relevance of dose-fractionation in tomography of radiation-sensitive specimens. *Ultramicroscopy* **60**, 357–373 (1995).
- Hoppe, W. Beugung im inhomogenen Primärstrahlwellenfeld. I. Prinzip einer Phasenmessung von Elektronenbeugungsinterferenzen. *Acta Crystallogr. A* **25**, 495–501 (1969).
- Rodenburg, J. M. & Bates, R. H. T. The theory of super-resolution electron microscopy via Wigner-distribution deconvolution. *Philos. Trans. Phys. Sci. Eng.* **339**, 521–553 (1992).
- Cowley, J. M. & Moodie, A. F. The scattering of electrons by atoms and crystals. I. A new theoretical approach. *Acta Crystallogr.* **10**, 609–619 (1957).
- Goodman, P. & Moodie, A. F. Numerical evaluations of N-beam wave functions in electron scattering by the multi-slice method. *Acta Crystallogr. A* **30**, 280–290 (1974).
- Maiden, A. M., Humphry, M. J. & Rodenburg, J. M. Ptychographic transmission microscopy in three dimensions using a multi-slice approach. *J. Opt. Soc. Am. A Opt. Image Sci. Vis.* **29**, 1606–1614 (2012).
- Godden, T. M., Suman, R., Humphry, M. J., Rodenburg, J. M. & Maiden, A. M. Ptychographic microscope for three-dimensional imaging. *Opt Express* **22**, 12513–12523 (2014).
- Suzuki, A. et al. High-resolution multislice X-ray ptychography of extended thick objects. *Phys. Rev. Lett.* **112**, 053903 (2014).
- Maiden, A. M. & Rodenburg, J. M. An improved ptychographical phase retrieval algorithm for diffractive imaging. *Ultramicroscopy* **109**, 1256–1262 (2009).
- Thibault, P. et al. High-resolution scanning X-ray diffraction microscopy. *Science* **321**, 379–382 (2008).
- Nellist, P. D., McCallum, B. C. & Rodenburg, J. M. Resolution beyond the ‘information limit’ in transmission electron microscopy. *Nature* **374**, 630–632 (1995).
- Pennycook, T. J. et al. Efficient phase contrast imaging in STEM using a pixelated detector. Part 1: experimental demonstration at atomic resolution. *Ultramicroscopy* **151**, 160–167 (2015).
- Yang, H. et al. Simultaneous atomic-resolution electron ptychography and Z-contrast imaging of light and heavy elements in complex nanostructures. *Nat. Commun.* **7**, 12532 (2016).
- Ryll, H. et al. A pnCCD-based, fast direct single electron imaging camera for TEM and STEM. *J. Instrum.* **11**, P04006 (2016).
- Bunk, O. et al. Influence of the overlap parameter on the convergence of the ptychographical iterative engine. *Ultramicroscopy* **108**, 481–487 (2008).
- Rodenburg, J. M. in *Advances in Imaging and Electron Physics* Vol 150 (ed. Hawkes, P. W.) 87–184 (Elsevier, 2008).
- Humphry, M. J., Kraus, B., Hurst, A. C., Maiden, A. M. & Rodenburg, J. M. Ptychographic electron microscopy using high-angle dark-field scattering for sub-nanometre resolution imaging. *Nat. Commun.* **3**, 730 (2012).
- Putkunz, C. T. et al. Atom-scale ptychographic electron diffractive imaging of noron nitride cones. *Phys. Rev. Lett.* **108**, 073901 (2012).
- D’Alfonso, A. J. et al. Deterministic electron ptychography at atomic resolution. *Phys. Rev. B* **89**, 064101 (2014).
- Wang, P., Zhang, F., Gao, S., Sawada, H. & Kirkland, A. I. Electron ptychographic diffractive imaging of boron atoms in LaB₆ crystals. *Sci. Rep.* **7**, 2857 (2017).
- Krivanek, O. L. et al. An electron microscope for the aberration-corrected era. *Ultramicroscopy* **108**, 179–195 (2008).
- Sasaki, T. et al. Performance of low-voltage STEM/TEM with delta corrector and cold field emission gun. *J. Electron Microsc.* **59**(Suppl 1), S7–13 (2010).
- Meyer, R. R., Kirkland, A. I. & Saxton, W. O. A new method for the determination of the wave aberration function for high resolution TEM: 1. Measurement of the symmetric aberrations. *Ultramicroscopy* **92**, 89–109 (2002).

40. Wang, P. et al. Nanoscale energy-filtered scanning confocal electron microscopy using a double-aberration-corrected transmission electron microscope. *Phys. Rev. Lett.* **104**, 200801 (2010).
41. Hashimoto, A. et al. Three-dimensional analysis of nanoparticles on carbon support using aberration-corrected scanning confocal electron microscopy. *Appl. Phys. Lett.* **101**, 253108 (2012).
42. Sousa, A. A., Azari, A. A., Zhang, G. F. & Leapman, R. D. Dual-axis electron tomography of biological specimens: extending the limits of specimen thickness with bright-field STEM imaging. *J. Struct. Biol.* **174**, 107–114 (2011).
43. Venkatakrisnan, S. V. et al. A model based iterative reconstruction algorithm for high angle annular dark field-scanning transmission electron microscope (HAADF-STEM) tomography. *IEEE Trans. Image Process.* **22**, 4532–4544 (2013).
44. Saghii, Z. & Midgley, P. A. Electron tomography in the (S)TEM: from nanoscale morphological analysis to 3D atomic imaging. *Annu. Rev. Mater. Res.* **42**, 59–79 (2012).
45. Sawada, H., Sasaki, T., Hosokawa, F. & Suenaga, K. Resolution enhancement at a large convergence angle by a delta corrector with a CFEG in a low-accelerating-voltage STEM. *Micron* **63**, 35–39 (2014).
46. Zheng, H. et al. Observation of single colloidal platinum nanocrystal growth trajectories. *Science* **324**, 1309–1312 (2009).
47. Li, Y. et al. Complex structural dynamics of nanocatalysts revealed in Operando conditions by correlated imaging and spectroscopy probes. *Nat. Commun.* **6**, 7583 (2015).
48. Grassucci, R. A., Taylor, D. & Frank, J. Visualization of macromolecular complexes using cryo-electron microscopy with FEI Tecnai transmission electron microscopes. *Nat. Protoc.* **3**, 330–339 (2008).
49. Lin, M. et al. Dynamical observation of bamboo-like carbon nanotube growth. *Nano Lett.* **7**, 2234–2238 (2007).
50. Lu, J. P. Elastic properties of carbon nanotubes and nanoropes. *Phys. Rev. Lett.* **79**, 1297–1300 (1997).
51. Wang, P., Bleloch, A. L., Falke, U. & Goodhew, P. J. Geometric aspects of lattice contrast visibility in nanocrystalline materials using HAADF STEM. *Ultramicroscopy* **106**, 277–283 (2006).
52. Egerton, R. F., Li, P. & Malac, M. Radiation damage in the TEM and SEM. *Micron* **35**, 399–409 (2004).
53. Nellist, P. D. et al. Direct sub-angstrom imaging of a crystal lattice. *Science* **305**, 1741 (2004).
54. Sawada, H. et al. STEM imaging of 47-pm-separated atomic columns by a spherical aberration-corrected electron microscope with a 300-kV cold field emission gun. *J. Electron Microsc.* **58**, 357–361 (2009).
55. Wang, P. et al. Contrast in atomically resolved EF-SCEM imaging. *Ultramicroscopy* **134**, 185–192 (2013).
56. Uhlemann, S., Muller, H., Hartel, P., Zach, J. & Haider, M. Thermal magnetic field noise limits resolution in transmission electron microscopy. *Phys. Rev. Lett.* **111**, 046101 (2013).
57. Kirkland, E. J. *Advanced Computing in Electron Microscopy*. (Springer Science & Business Media, 2010).
58. Huang, W., Wang, Y., Luo, G. & Wei, F. 99.9% purity multi-walled carbon nanotubes by vacuum high-temperature annealing. *Carbon* **41**, 2585–2590 (2003).
59. Yang, H. et al. Electron ptychographic phase imaging of light elements in crystalline materials using Wigner distribution deconvolution. *Ultramicroscopy* **180**, 173–179 (2017).
60. Faruqi, A. R. & Henderson, R. Electronic detectors for electron microscopy. *Curr. Opin. Struct. Biol.* **17**, 549–555 (2007).
61. D'Alfonso, A. J., Allen, L. J., Sawada, H. & Kirkland, A. I. Dose-dependent high-resolution electron ptychography. *J. Appl. Phys.* **119**, 054302 (2016).
62. Maiden, A. M., Humphry, M. J., Zhang, F. & Rodenburg, J. M. Superresolution imaging via ptychography. *J. Opt. Soc. Am. A* **28**, 604–612 (2011).

Acknowledgements

S.G. and P.W. acknowledge funding from the National Basic Research Program of China, (Grant No. 2015CB654901), the National Natural Science Foundation of China (11474147), the Natural Science Foundation of Jiangsu Province (Grant No. BK20151383), the International Science & Technology Cooperation Program of China (2014DFE00200), and the Fundamental Research Funds for the Central Universities (No. 021314380077). A.I.K. acknowledges financial support from EPSRC (Platform Grants EP/F048009/1 and EP/K032518/1). P.D.N. and G.T.M. acknowledge financial support from EPSRC (Grant Nos. EP/M010708/1, EP/K032518/1, and EP/K040375/1). Both A.I.K. and P.D.N. acknowledge support from the EU (ESTEEM2 (Enabling Science and Technology through European Electron Microscopy), 7th Framework Programme of the European Commission).

Author contributions

S.G. carried out the experiment, algorithm development, and data analysis supervised by P.W. P.W., X.Q.P. and A.I.K. conceived the project and designed the experiment. F.Z. assisted in algorithm development. G.T.M. and P.D.N. carried out the reconstruction using the WDD approach. All authors discussed the results and commented on the manuscript.

Additional information

Supplementary Information accompanies this paper at doi:10.1038/s41467-017-00150-1.

Competing interests: The authors declare no competing financial interests.

Reprints and permission information is available online at <http://npg.nature.com/reprintsandpermissions/>

Publisher's note: Springer Nature remains neutral with regard to jurisdictional claims in published maps and institutional affiliations.



Open Access This article is licensed under a Creative Commons Attribution 4.0 International License, which permits use, sharing, adaptation, distribution and reproduction in any medium or format, as long as you give appropriate credit to the original author(s) and the source, provide a link to the Creative Commons license, and indicate if changes were made. The images or other third party material in this article are included in the article's Creative Commons license, unless indicated otherwise in a credit line to the material. If material is not included in the article's Creative Commons license and your intended use is not permitted by statutory regulation or exceeds the permitted use, you will need to obtain permission directly from the copyright holder. To view a copy of this license, visit <http://creativecommons.org/licenses/by/4.0/>.

© The Author(s) 2017