

UCLA

Census Snapshots

Title

Connecticut Census Snapshot: 2010

Permalink

<https://escholarship.org/uc/item/3p3031qg>

Authors

Gates, Gary J.
Cooke, Abigail M.

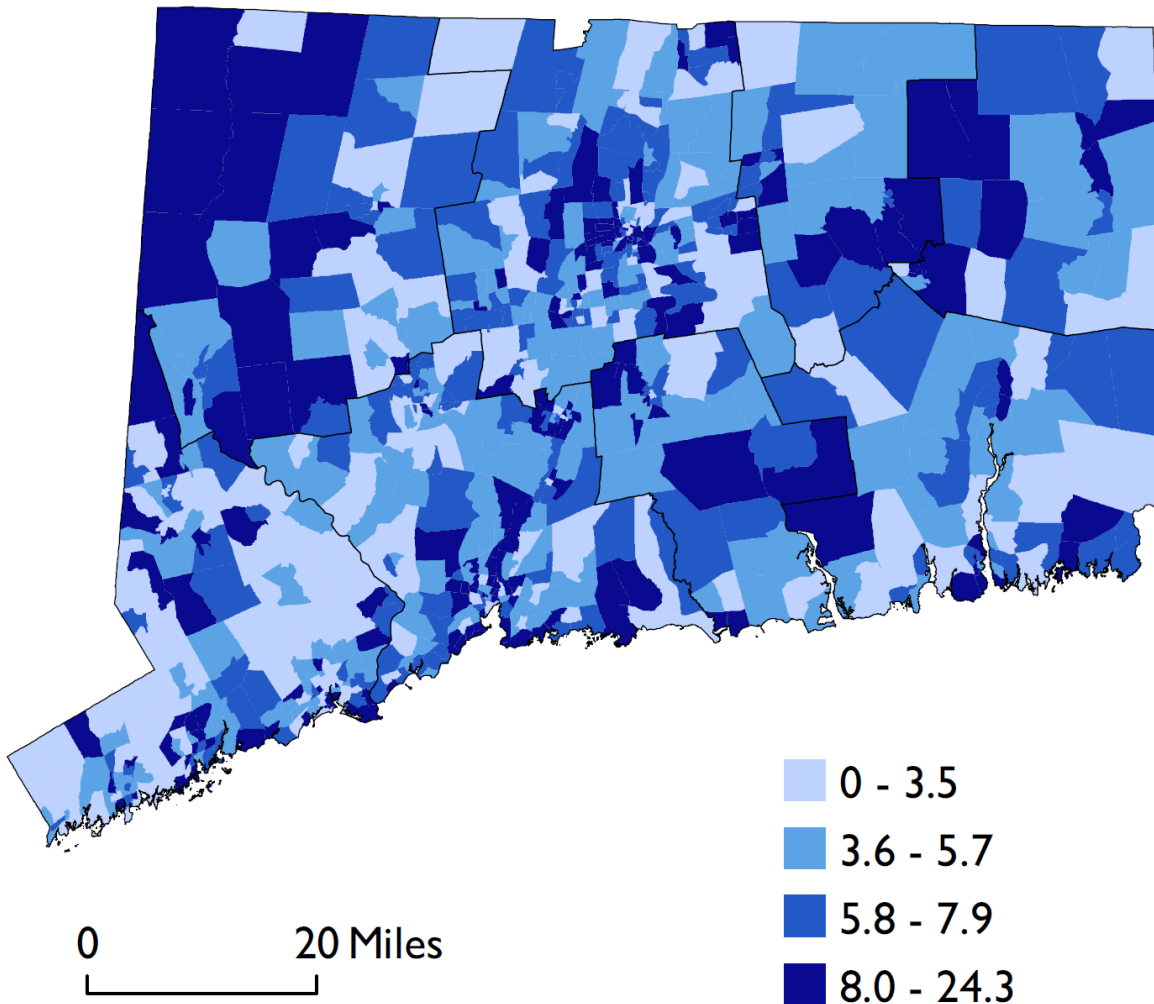
Publication Date

2011-09-01

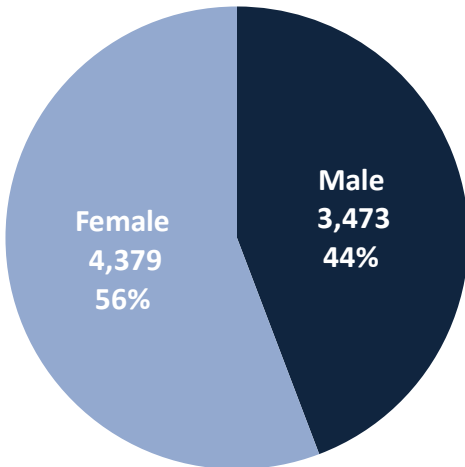


Same-sex couples	7,852	Same-sex couples per 1,000 households	5.7
Husband/wife	2,704	Same-sex "husband/wife" couples per 1,000 "husband/wife" couples	4.0
Unmarried partner	5,148	Same-sex "unmarried partner" couples per 1,000 "unmarried partner" couples	60.7

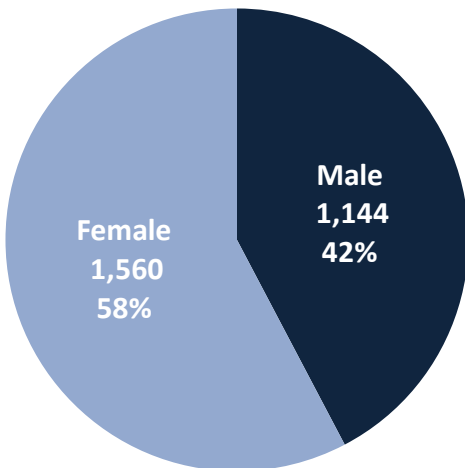
**Same-sex couples per 1,000 households
by Census tract (adjusted)**



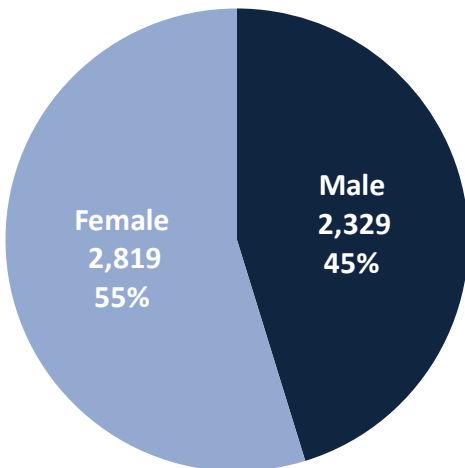
All Same-sex Couples



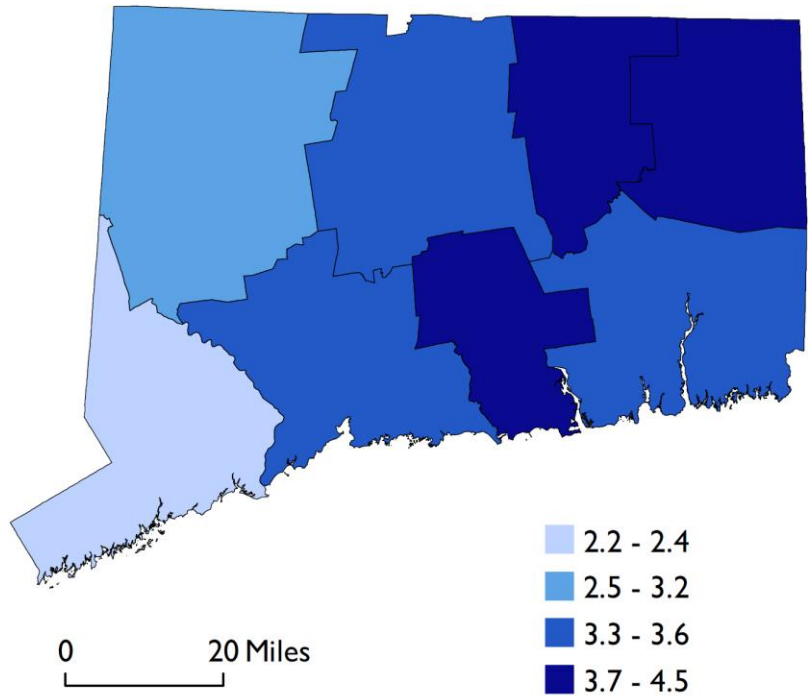
Same-sex couples who identify as spouses



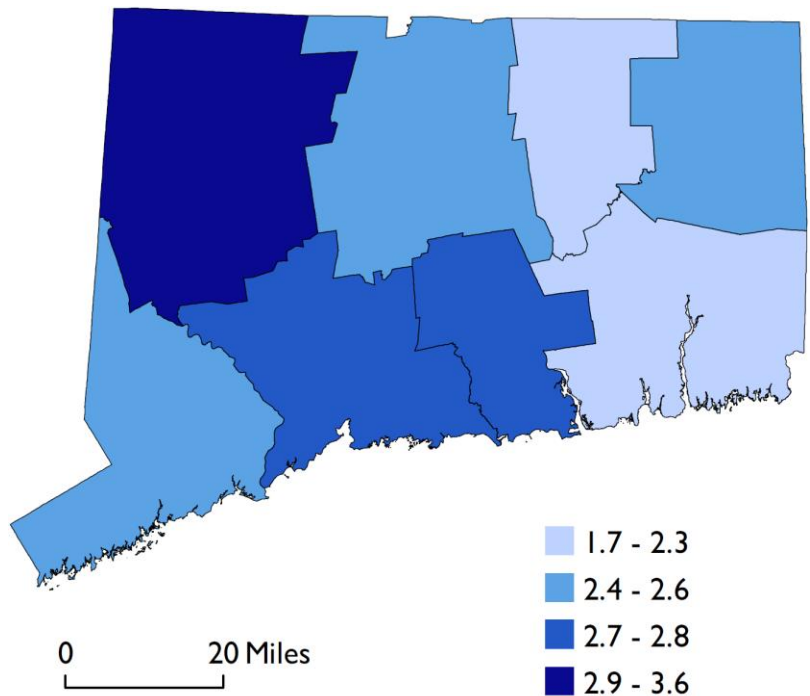
Same-sex couples who identify as unmarried partners



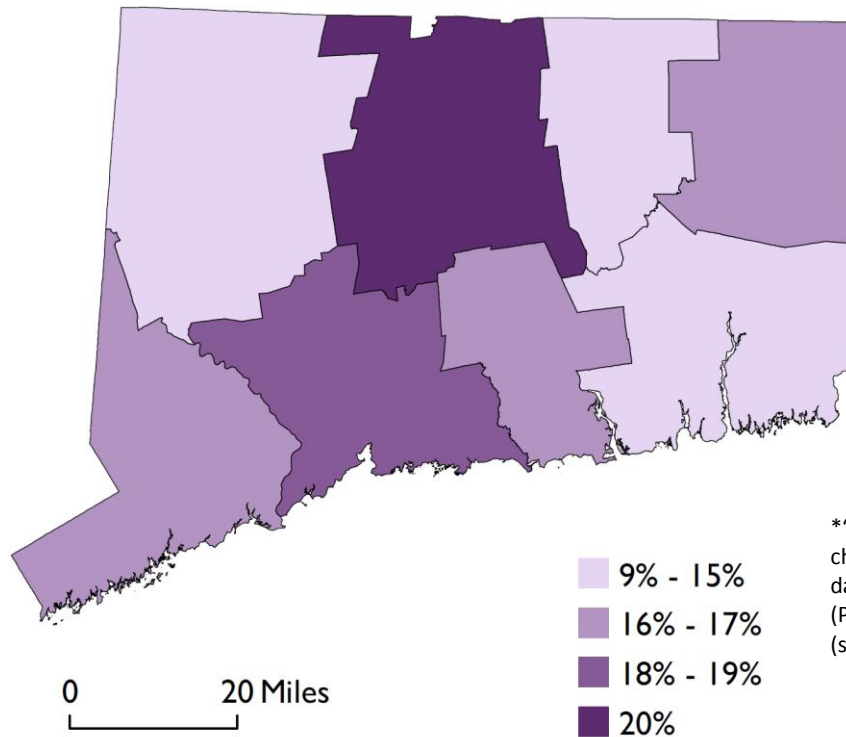
Same-sex female couples per 1,000 households by county (adjusted)



Same-sex male couples per 1,000 households by county (adjusted)

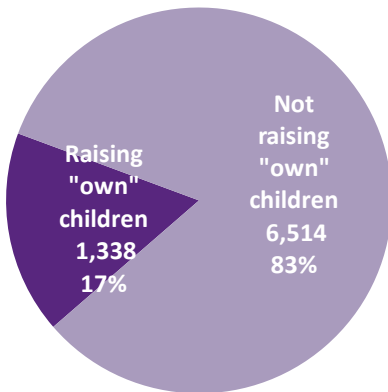


Percent of same-sex couples raising “own” children* by county (adjusted)

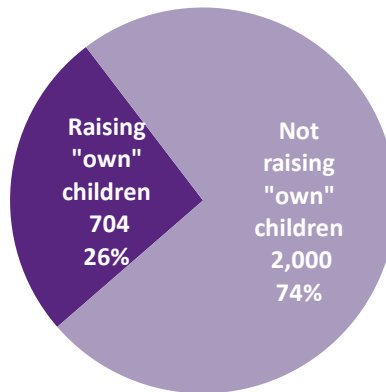


*“Own” children are never-married children under 18 who are sons or daughters of one partner or spouse (Person 1) by birth, marriage (stepchild), or adoption.

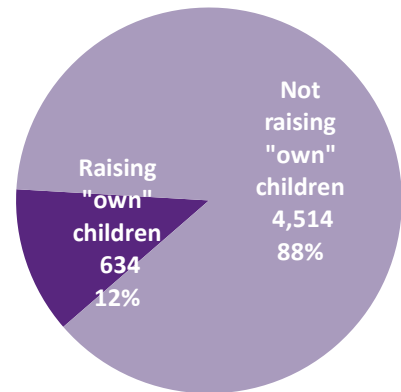
All Same-sex Couples



Same-sex couples who identify as spouses



Same-sex couples who identify as unmarried partners



Data and methodology

Data are compiled using the US Census Bureau’s state-level preferred estimates for same-sex couples found [here](#). Same-sex couples are identified in households where Person 1 describes his or her relationship with another adult of the same sex as either a “husband/wife” or “unmarried partner”. The Census Bureau preferred estimates adjust original Census tabulations reported in the Census 2010 SF-1, PCT15 to account for the likelihood that a small portion of different-sex couples miscode the sex of a spouse or partner and are incorrectly counted as a same-sex couple.

Adjusted data

The Census Bureau only released preferred estimates for states. County, city, and tract data used in this report are adjusted by the authors and do not represent official Census Bureau tabulations. Like the Census Bureau preferred estimates, the adjustment procedure accounts for the likelihood that a small portion of different-sex couples miscode the sex of a spouse or partner and are incorrectly counted as a same-sex couple.

Undercount

The adjusted figures do not take into account the possibility that some same-sex couples may not be counted in Census tabulations due to concerns about confidentiality or because neither partner was Person 1 in the household.

Go [here](#) for a complete description of the adjustment procedure.

Counties with 50+ same-sex couples ranked by same-sex couples per 1,000 households

State rank	US rank among 1,142 counties with 50+ same-sex couples	County	Same-sex couples (adjusted)	Same-sex couples per 1,000 households (adjusted)	Same-sex male couples (adjusted)	Same-sex female couples (adjusted)	% Raising "own" children among same-sex couples (adjusted)
1	141	Windham	293	6.54	101	192	15%
2	165	Middlesex	423	6.29	179	244	15%
3	175	Litchfield	478	6.23	274	204	9%
4	178	Tolland	339	6.22	93	246	14%
5	192	New Haven	2037	6.09	885	1152	18%
6	197	Hartford	2121	6.04	884	1237	20%
7	232	New London	617	5.76	233	384	15%
8	433	Fairfield	1545	4.60	801	744	16%

**Cities with 50+ same-sex couples
ranked by same-sex couples per 1,000 households**

State rank	US rank among 1,415 cities with 50+ same-sex couples	City	Same-sex couples (adjusted)	Same-sex couples per 1,000 households (adjusted)
1	186	New London	106	10.18
2	269	New Haven	427	8.75
3	279	West Hartford	218	8.63
4	296	Manchester	108	8.38
5	376	Middletown	151	7.60
6	402	Hartford	336	7.44
7	452	West Haven	150	7.11
8	506	Meriden	162	6.77
9	519	Stratford	135	6.73
10	534	Wallingford Center	51	6.65
11	548	New Britain	185	6.58
12	556	Norwalk	217	6.53
13	558	Norwich	108	6.51
14	626	Bristol	157	6.18
15	653	East Haven	72	6.08
16	714	Milford	122	5.79
17	737	Westport	55	5.72
18	814	Waterbury	231	5.41
19	852	East Hartford	104	5.16
20	863	Stamford	241	5.09
21	986	Bridgeport	238	4.65
22	1005	Torrington	69	4.55
23	1016	Newington	57	4.52
24	1017	Wethersfield	51	4.52
25	1106	Shelton	65	4.24
26	1164	Danbury	117	4.03

About the authors

Gary J. Gates, PhD is the Williams Distinguished Scholar at the Williams Institute, UCLA School of Law.

Abigail M. Cooke is a PhD candidate in the Department of Geography at UCLA and is affiliated with the California Center for Population Research.

Acknowledgments

The authors thank Williams Institute Fellows Angeliki Kastanis, Laura Durso, and Christy Mallory for assistance with the Snapshots.

For more information

The Williams Institute, UCLA School of Law, (310) 267-4382

<http://williamsinstitute.law.ucla.edu/>