

# UC Irvine

## UC Irvine Previously Published Works

### Title

Climate controls on valley fever incidence in Kern County, California

### Permalink

<https://escholarship.org/uc/item/3hd9206n>

### Journal

International Journal of Biometeorology, 50(3)

### ISSN

0020-7128

### Authors

Zender, Charles S  
Talamantes, Jorge

### Publication Date

2006

### DOI

10.1007/s00484-005-0007-6

### Copyright Information

This work is made available under the terms of a Creative Commons Attribution License, available at <https://creativecommons.org/licenses/by/4.0/>

Peer reviewed

Charles S. Zender · Jorge Talamantes

## Climate controls on valley fever incidence in Kern County, California

Received: 4 October 2004 / Revised: 22 July 2005 / Accepted: 3 August 2005 / Published online: 26 October 2005  
© ISB 2005

**Abstract** Coccidioidomycosis (valley fever) is a systemic infection caused by inhalation of airborne spores from *Coccidioides immitis*, a soil-dwelling fungus found in the southwestern United States, parts of Mexico, and Central and South America. Dust storms help disperse *C. immitis* so risk factors for valley fever include conditions favorable for fungal growth (moist, warm soil) and for aeolian soil erosion (dry soil and strong winds). Here, we analyze and inter-compare the seasonal and inter-annual behavior of valley fever incidence and climate risk factors for the period 1980–2002 in Kern County, California, the US county with highest reported incidence. We find weak but statistically significant links between disease incidence and antecedent climate conditions. Precipitation anomalies 8 and 20 months antecedent explain only up to 4% of monthly variability in subsequent valley fever incidence during the 23 year period tested. This is consistent with previous studies suggesting that *C. immitis* tolerates hot, dry periods better than competing soil organisms and, as a result, thrives during wet periods following droughts. Furthermore, the relatively small correlation with climate suggests that the causes of valley fever in Kern County could be largely anthropogenic. Seasonal climate predictors of valley fever in Kern County are similar to, but much weaker than, those in Arizona, where previous studies find precipitation explains up to 75% of incidence. Causes for this discrepancy are not yet understood. Higher resolution temporal and spatial monitoring of soil conditions could improve our understanding of climatic antecedents of severe epidemics.

**Keywords** Climate and health · Modeling · Valley fever · Coccidioidomycosis · *Coccidioides immitis*

### Introduction

Coccidioidomycosis is a systemic infection caused by inhalation of airborne spores of *Coccidioides immitis*, a soil-dwelling fungus found in the southwestern United States, parts of Mexico (Maddy and Coccozza 1964), and Central and South America (Centers for Disease Control and Prevention 1994). *C. immitis* thrives in moist soils, is spread by wind events, and therefore has many environmental risk factors. Epidemiologic studies in the 1930s (Deresinski 1980; Larwood 2000) linked coccidioidomycosis to the regional disease known as San Joaquin Fever, also known as valley fever. Risk management and cost-effectiveness studies show that a vaccine for valley fever is plausible and should be administered to newborns in highly endemic counties including Kern in California and Pima in Arizona (Galgiani 1999; Barnato et al. 2001). These and earlier studies (Centers for Disease Control and Prevention 1994, 1996) recommend intensifying efforts to better characterize climate risk factors for acquiring infection. This study explores climate-related risk factors for valley fever in Kern County, and quantifies their level of significance.

Early studies of environmental causes of valley fever (Smith et al. 1946; Maddy 1957; Hugenholtz 1957) elucidated a life cycle that accounts for many observed features of *C. immitis* blooms and subsequent coccidioidomycosis incidence. Pappagianis (1988) synthesized the climatological aspects of this lifecycle gathered from these and subsequent studies. *C. immitis* thrives in the soil (“blooms”) during wet periods lasting several weeks. Infections tend to occur in the dry season when soils are most mobile. Incidence often increases after a heavy wet season following a prolonged dry spell.

In the most quantitative analysis of climate controls on valley fever incidence to date, Kolivras and Comrie (2003) found that antecedent precipitation and temperature are

C. S. Zender (✉)  
Department of Earth System Science,  
University of California,  
Irvine, CA 92697-3100, USA  
e-mail: zender@uci.edu  
Tel.: +1-949-8242987  
Fax: +1-949-8243874

J. Talamantes  
Department of Physics and Geology,  
California State University,  
Bakersfield, CA 93311, USA

moderate climate risk factors for valley fever in Pima County (which includes Tucson), Arizona. They developed a multivariate model to predict valley fever incidence in Arizona in a given month based on climate conditions and anomalies in the antecedent 3.5 years. Moreover, the statistical model of Kolivras and Comrie uses and predicts a metric called the transformed incidence anomaly. This is the monthly incidence anomaly relative to the annual (rather than climatological, or climatological monthly) mean. The maximum transformed incidence anomalies reported by Kolivras and Comrie (2003) in Pima County are about 10%, and their statistical model predicts up to one-half of some anomalies.

The transformed incidence is insensitive to uniform increases in monthly incidence that result in an absolute annual increase (e.g., an epidemic) but which do not change the relative contribution of each month to the annual incidence. By contrast, the 1991–1995 epidemic in Kern County increased inter-annual and intra-annual variations in incidence by about 1,000% (10-fold). This appears to be the largest well-documented valley fever epidemic on record.

Previous studies identify no clear cause for the 1991–1995 epidemic (Centers for Disease Control and Prevention 1994; Jinadu 1995; Kirkland and Fierer 1996). The most likely climate factor contributing to the epidemic was the increased rainfall that ended a 5 year drought in California in March 1991 (Jinadu 1995; Kirkland and Fierer 1996). The following two winters were twice as wet as normal (Jinadu 1995). Possible exacerbating demographic factors were an increased immuno-suppressed population, and less prior exposure (which develops immunity) in the general population (Kirkland and Fierer 1996; Centers for Disease Control and Prevention 1996).

We analyze the links between climate and *C. immitis* epidemiology using the January 1980 to December 2002 record (23 years) of monthly statistics from Kern County, California. Our objectives are two-fold: First, we explore climate-related risk factors for valley fever in Kern County, and quantify their level of significance. Second, we contrast our results from Kern County with results from a similar study in Pima County, Arizona (Kolivras and Comrie 2003), which experiences a significantly different climate. This comparison shows us the extent to which valley fever predictability depends on local climate, and how that may differ with climate regime.

## Methods

Climate variables in Kern County are from the Solar and Meteorological Surface Observational Network Dataset (SAMSON, available from National Climatic Data Center, Asheville, NC) for 1961–1990. We use NOAA Hourly United States Weather Observations (HUSWO) for 1990–1995, NOAA Integrated Surface Hourly Observations (ISHO) for 1995–2000, and the NWS Hanford Forecast station website (<http://www.wrh.noaa.gov/mesonet>) for daily data in 2001–2002. All four datasets come from mea-

surements taken at Bakersfield airport. Hourly and daily weather data are averaged to obtain monthly means.

Valley fever incidence statistics for Kern County were obtained from the California Department of Health Services (CDHS). Monthly incidence reports are available from 1980 to 2002, while annual incidence data pre-date 1980. Kern County is the national center for serologic testing for valley fever. The high awareness in Kern County leads to better reporting.

## Climatological and monthly anomalies

Our analysis is based on the climatological monthly anomalies of incidence and climate data. From a physical standpoint, one expects climatological anomalies to drive incidence anomalies. For example, wind speed threshold velocities for dust production depend directly on soil conditions, and not on season per se. Similarly, one expects *C. immitis* to respond to deviations in the climatological mean amount of soil moisture, rather than the climatological monthly mean soil moisture. However, we learned more about the link between climatological and biological processes by examining the climatological monthly anomaly (i.e., deviation from the mean annual cycle) than by examining the absolute climatological anomaly.

The very strong annual cycles of the (raw) time series we considered dominate the physical picture—correlation analysis of these time series shows only this effect and nothing else. We therefore removed the annual cycle from all data. The resulting time series are strongly autocorrelated (e.g., a particularly warm July likely follows an unusually hot June). Analysis based on these time series results in artificially strong correlations between incidence and meteorological parameters, while teaching us nothing about incidence anomalies in general, and epidemics in particular. We therefore removed those autocorrelations by applying an autoregression procedure of sufficiently high order (Chatfield 2004). Finally, we performed lag correlation analyses only after correcting for annual cycles and time-series autocorrelations.

## Fungal lifecycle

Unique among pathogenic fungi, *C. immitis* forms infectious spores known as arthroconidia at the distal ends of filamentary hyphae (Kirkland and Fierer 1996). During wind events, hyphae terminating in arthroconidia may rupture, releasing spores to the atmosphere. Infection occurs almost exclusively through the respiratory route. After inhalation, the arthroconidia develop into spherules, each containing hundreds to thousands of offspring known as endospores. These spherules rupture in 2–3 days, and each endospore may develop into a mature spherule, repeating the process.

The *C. immitis* lifecycle is dimorphic, with saprophytic and parasitic phases (e.g., Pappagianis 1988; Kolivras et al. 2001). In the saprophytic phase, *C. immitis* lives in the

upper layers of soil, where it obtains nourishment from dead or decaying organic matter. Appropriate temperature, soil moisture, and soil texture conditions allow the fungus to develop hyphae—slender filaments of cells that grow upward in the soil. As conditions dry and the fungus becomes drought stressed, alternate cells in the hyphae undergo suicide. The remaining, viable cells may become arthroconidia, which develop into parasitic endospores. Forces that disturb the soil, rupture the hyphae, and dislodge spores include natural events such as wind gusts and anthropogenic disturbances.

Precipitation influences valley fever directly in at least two ways. First, *C. immitis* thrives in moist soils, which are thought to be required for blooms to occur (Pappagianis 1988). Moreover, there is some evidence that *C. immitis* tolerates drought longer than competing species (Kolivras et al. 2001). This would allow it to recover quickly post-drought and to become more pervasive.

### Dispersal via saltation-sandblasting

Previous discussions of *C. immitis* dispersal (e.g., Pappagianis and Einstein 1978; Kolivras et al. 2001; Kolivras and Comrie 2003) are incomplete in that they mention only wind and dust storms as the primary natural dispersal mechanism. *C. immitis* arthrospores range from 1.5 to 4.5  $\mu\text{m}$  in width and 5.0 to 30  $\mu\text{m}$  in length (Pappagianis 1988; Kolivras et al. 2001). Clay and small silt-sized particles like arthrospores are tightly bound to the soil surface, or to larger particle aggregates, by inter-particle cohesion (Iversen and White 1982), electrostatic, and capillary forces (Hillel 1982; McKenna-Neuman and Nickling 1989). Wind tunnel experiments (e.g., Iversen and White 1982; Shao and Lu 2000) show that wind speeds required to directly entrain particles as small as *C. immitis* hypha and arthrospores exceed about 20  $\text{m s}^{-1}$ . Maximum monthly wind speeds recorded in Kern County since 1961 are usually less than 15  $\text{m s}^{-1}$  and exceeded 20  $\text{m s}^{-1}$  on only five occasions, so direct entrainment by wind is probably responsible for only a small minority of *C. immitis* dispersal events.

We speculate that saltation is usually the proximate cause of hyphal rupture, and that sandblasting is the normal dispersal mechanism for airborne arthrospores. The saltation-sandblasting theory is well-known in agricultural and dust emissions studies (e.g., Iversen and White 1982; Alfaro et al. 1997; Grini et al. 2002). Saltation and sandblasting can disperse arthrospores at much lower wind speeds (6–10  $\text{m s}^{-1}$ ) than direct wind entrainment, and is therefore the only plausible mechanism for many dispersal events.

Saltation, the direct entrainment and movement of particles by wind, initiates when the surface wind friction speed  $u_*$  (a measure of surface wind stress) exceeds a soil-dependent wind friction threshold  $u_{*t}$ . Soil texture, moisture, and crustal strength determine  $u_{*t}$ . For typical dry soils,  $u_{*t}$  ranges between 0.2 and 0.5  $\text{m s}^{-1}$ , corresponding to threshold wind speeds of 6–15  $\text{m s}^{-1}$  at 10 m height. Once  $u_* > u_{*t}$ , the wind directly entrains loose sand-

sized particles into a shallow layer (the saltation layer) between the surface and about 1 m.

However, most directly entrained (i.e., sand-sized) particles are too large to rise above the saltation layer. As the turbulence carries them downwind, they repeatedly impact the surface. Each surface impact may dislodge or disaggregate both smaller (silt and dust) and larger (coarse sand) particles, which may also become entrained into the saltation layer (Grini et al. 2002). This process is known as sandblasting. A well developed saltation layer may cause millions of impacts per square meter per second. The saltation layer develops, thickens, and roughens as directly entrained and sandblasted particles accumulate with the fetch of the wind (Gillette et al. 1997). Sandblasting, not direct wind entrainment, injects the vast majority of surface particles into the saltation layer and thence the free atmosphere. However, unusually strong gusts exceeding about 20  $\text{m s}^{-1}$  can entrain arthrospores directly (without saltation sandblasting).

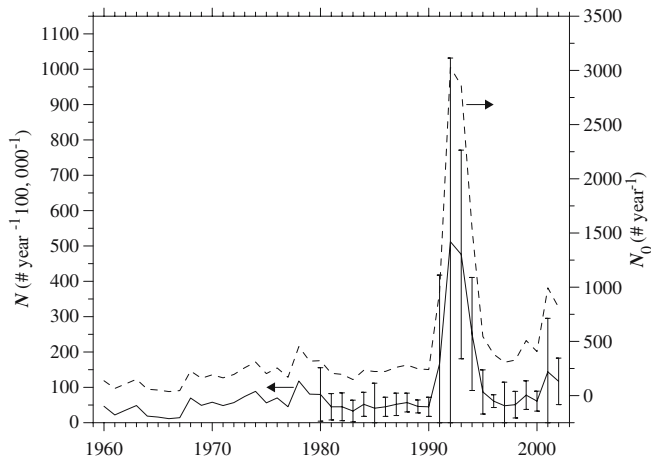
### Epidemiology

We are most interested in identifying climate and soil-related anomalies in *C. immitis* in order to assess the susceptibility of endemic regions to increased incidence of valley fever given accurate predictions of seasonal-to-inter-annual climate anomalies. Seasonal-to-inter-annual climate predictability has improved in recent years as teleconnections between climate modes (e.g., ENSO) and regional climate become better understood and represented in models (e.g., Glantz et al. 1991). Unfortunately, data abundance of *C. immitis* in soil are unavailable. At this time the best proxy available is case incidence, even though many steps separate growth of *C. immitis* in soil from case incidence (Kolivras and Comrie 2003).

The absolute incidence  $N_0$  [# year<sup>-1</sup>] of valley fever in Kern County from 1960 to 2002, and the incidence per unit population  $N$  [# year<sup>-1</sup>(100,000)<sup>-1</sup>] are nearly identical in shape (Fig. 1). We always use  $N$  rather than  $N_0$  for statistical comparisons. During this period the Latino population fraction increased about 7% per decade since 1970 to the current level of about 35%. This demographic trend is not detectable in the incidence statistics, suggesting that Latinos are as susceptible as the original demographic population.

The inter-annual variability (one standard deviation) in annual valley fever incidence from 1960 to 2002 is 102 year<sup>-1</sup>(100,000)<sup>-1</sup>, 120% of the mean incidence of 85 year<sup>-1</sup>(100,000)<sup>-1</sup>. The inter-annual variability from 1991 to 2002 is 164 year<sup>-1</sup>(100,000)<sup>-1</sup>, significantly greater than 23 year<sup>-1</sup>(100,000)<sup>-1</sup> for the period 1960–1990. Incidence  $N$  in 2001 and 2002 was higher than any previously recorded level except the epidemic of 1991–1995 (Jinadu 1995).

The intra-annual variability is shown for 1980–2002, when monthly incidence data were available. The fractional intra-annual variability  $\bar{\sigma}$  is the standard deviation of annual incidence rates computed from monthly rates



**Fig. 1** Annual incidence  $N$  [ $\# \text{ year}^{-1} (100,000)^{-1}$ ] (solid line) and total number of reported cases  $N_0$  [ $\# \text{ year}^{-1}$ ] (dashed line) of valley fever in Kern County from 1960 to 2002. Bars Two standard deviations of each year's monthly incidence statistics projected to annual rates

multiplied by 12. Despite large inter-annual changes in  $N$ , the mean  $\bar{\sigma}$  is close to  $122 \text{ year}^{-1} (100,000)^{-1}$ . Thus, the monthly incidence is within  $244 \text{ year}^{-1} (100,000)^{-1}$  of the annual mean incidence in 10–11 months in most years.

### Climatology

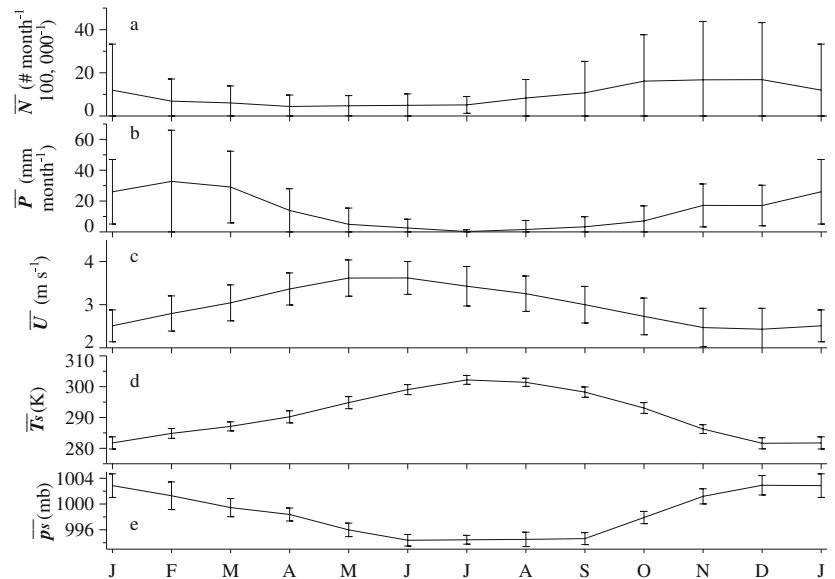
Coccidioidomycosis incidence  $\bar{N}$  [ $\# \text{ month}^{-1} (100,000)^{-1}$ ] in Kern County, and the climate risk factors that may be associated with it, show pronounced annual cycles (Fig. 2). Monthly valley fever incidence since 1980 shows a strong annual cycle superimposed on a relatively uniform back-

ground rate of the order of  $5 \text{ month}^{-1} (100,000)^{-1}$ . Exposures due to non-environmental causes, e.g., construction or excavations, are expected to contribute to the background incidence (Maddy 1957; Kolivras et al. 2001). Incidence increases from  $4.7 \text{ month}^{-1} (100,000)^{-1}$  during spring months (April–June) to  $17 \text{ month}^{-1} (100,000)^{-1}$  during fall (October–December), when 60% of all cases are reported. One should keep in mind that the minimum time from exposure to incidence is about 2 weeks, and that many cases progress unreported for months, until victims' conditions are serious enough to require medical care (Pappagianis and Einstein 1978). On average, it takes about 5 weeks from infection to reporting (T. R. Larwood, personal communication).

The most variable climate characteristic in Kern County is rainfall. The climatological mean precipitation  $\bar{P}$  from 1961 to 2002 is  $15.8 \pm 23.1 \text{ cm year}^{-1}$ . *C. immitis* prevalence decreases in climates with precipitation rates  $\bar{P} < 10 \text{ cm year}^{-1}$  and  $\bar{P} > 50 \text{ cm year}^{-1}$  (Kolivras et al. 2001). Thus, Kern County receives enough precipitation for growth of *C. immitis* in average and moist years. Incidence in California peaks from October to January, the end of the dry season, as noted in previous studies (e.g., Smith et al. 1946; Pappagianis 1988). Precipitation from the cold northwesterly frontal systems peaks in late winter, and seems to reduce further incidence, perhaps by dampening soil and suppressing aeolian erosion.

The climatological mean wind speed  $\bar{U}$  in Kern County from 1961 to 2002 is  $3.0 \pm 0.6 \text{ m s}^{-1}$ . Instantaneous wind speed  $U$  (not shown) from Kern County exceeds the  $6\text{--}15 \text{ m s}^{-1}$  at 10 m height required for soil deflation many times each month. Seasonal winds peak in May–July, the beginning of the dry season. The seasonal coincidence of peak winds with drying soil in Kern County seems to favor aeolian distribution of arthroconidia, and thus infection, in summer.

**Fig. 2** Annual cycle of coccidioidomycosis incidence and potential climate risk factors from 1980 to 2002. Monthly mean incidence  $\bar{N}$  [ $\# \text{ month}^{-1} (100,000)^{-1}$ ] (a), precipitation  $\bar{P}$  [ $\text{mm month}^{-1}$ ] (b), wind speed  $\bar{U}$  [ $\text{m s}^{-1}$ ] (c), surface temperature  $\bar{T}_s$  [ $\text{K}$ ] (d), and surface pressure  $\bar{P}_s$  [ $\text{mb}$ ] (millibars) (e) are shown. Bars Two standard deviations of the inter-annual variability computed separately for each month. Standard deviations computed using 1980–2002 data for incidence, 1961–2002 for climate variables



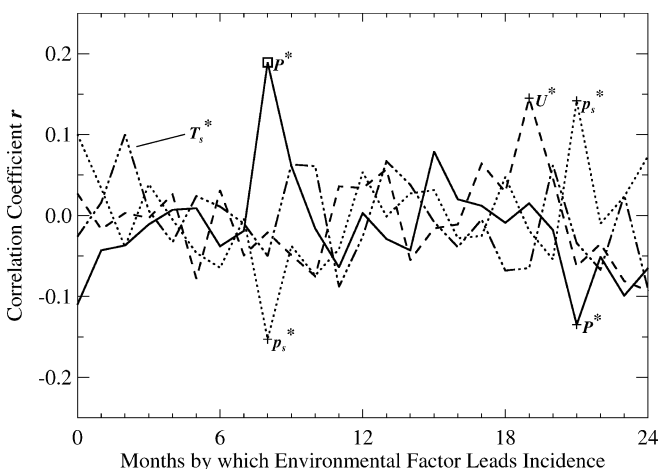
## Results

### Univariate correlations

Similar to previous studies in other regions (Hugenholtz 1957; Kolivras and Comrie 2003), we examined correlations between annual cycles of valley fever incidence, precipitation, winds, and temperature (cf. Fig. 2). Figure 3 shows the unranked (Pearson) linear correlation coefficient  $r$  between the autoregression-corrected climatological monthly valley fever anomaly  $N^*$  and the (autoregression-corrected) climatological monthly anomalies of four potential climate risk factors: precipitation  $P^*$ , wind speed  $U^*$ , surface temperature  $T_s^*$ , and surface pressure  $p_s^*$ . The results are qualitatively similar if ranked (Spearman) correlations  $r_s$  are used instead.

The confidence statistic  $p$  is only better than 1% once, for correlation between precipitation anomaly 8 months antecedent. The confidence statistic  $p$  is better than 5% once for wind speed anomaly (19 months antecedent), once more for precipitation anomaly (21 months antecedent), twice for surface pressure anomaly (discussed below), and never for surface temperature anomaly. Table 1 summarizes these results. It shows, in decreasing order of significance, all statistically significant confidence statistics  $p < 0.05$  between valley fever anomalies and climate anomalies in Fig. 3. All associated lag-correlation coefficients  $r$  and  $r_s$  are  $< 0.20$ . Hence our central result is that climate anomalies do not provide a robust method for predicting incidence in Kern County, based on 23 years of monthly data.

As described above, three climate risk factors ( $P^*$ ,  $U^*$ ,  $T_s^*$ ) directly influence the lifecycle or dispersal of *C. immitis*. Of these three, precipitation anomalies are the only highly statistically significant ( $p < 0.01$ ) climate indicators of monthly valley fever incidence in Kern County in the year preceding incidence (Fig. 3). The statistically signifi-



**Fig. 3** Lag correlation coefficient  $r$  between climatological monthly valley fever anomaly  $N^*$  and climatological monthly anomalies of four potential climate risk factors: precipitation  $P^*$ , wind speed  $U^*$ , surface temperature  $T_s^*$ , and surface pressure  $p_s^*$ . Plusses (+) and squares ( $\square$ ) indicate confidence statistics  $p$  better than 5% and 1%, respectively

**Table 1** Significant correlations with climate anomalies<sup>a</sup>

Anomaly	# Months <sup>b</sup>	$r^c$	$r_s^d$	$p^e$
Precipitation $P^*$	8	0.19	0.11	0.0020
Precipitation $P^*$	21	-0.14	-0.13	0.028
Wind speed $U^*$	19	0.15	0.074	0.018
Surface pressure $p_s^*$	8	-0.15	-0.08	0.018
Surface pressure $p_s^*$	21	0.14	0.16	0.028

<sup>a</sup>Sample Size  $M=264$  for  $P^*$ ,  $U^*$ , and  $T_s^*$ ;  $M=240$  for  $p_s^*$

<sup>b</sup>Number of months by which monthly climate anomaly  $x^*$  leads monthly valley fever anomaly  $N^*$  for this correlation

<sup>c</sup>Pearson correlation coefficient

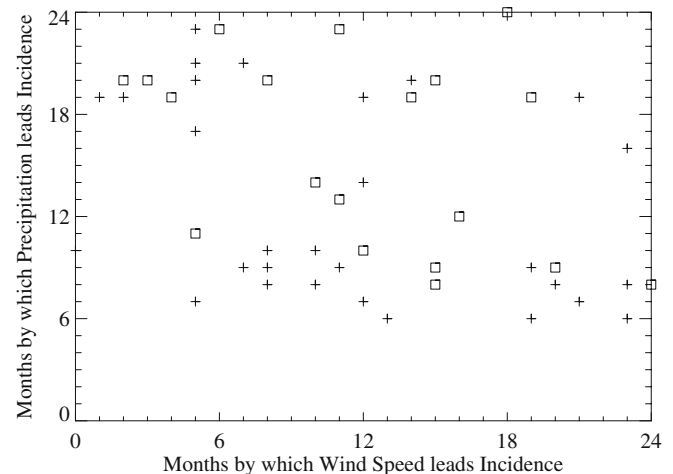
<sup>d</sup>Ranked (Spearman) correlation coefficient

<sup>e</sup>Confidence statistic (probability that incidence and climate factor are uncorrelated)

cant ( $p < 0.05$ ) links between incidence and surface pressure anomalies appear to be false positives since there is no physically plausible direct relationship between  $p_s^*$  and *C. immitis* lifecycle. The remaining statistically significant ( $p < 0.05$ ) correlations between incidence and precipitation and wind speed may also be false positives. The long lags (19 and 21 months, respectively) between incidence and  $U^*$  and  $P^*$  anomalies raise questions of causality that Kolivras and Comrie (2003) discuss in more detail.

### Bivariate correlations

We next examine whether combinations of climate anomalies explain more of the incidence anomaly than individual climate anomalies. Such bivariate associations are suggested by the *C. immitis* lifecycle described above. First we ask if valley fever incidence is more sensitive to a wind speed anomaly that occurs a certain number of months after a dry spell (or wet spell) than to a wind speed anomaly that occurs the same number of months after a normal



**Fig. 4** Lag correlation coefficient  $r$  between valley fever incidence anomaly  $N^*$  and product of precipitation and wind speed anomalies ( $P^*U^*$ ) from 1980 to 2002. Plusses (+) and squares ( $\square$ ) indicate confidence statistics  $p$  better than 5% and 1%, respectively

**Table 2** Time series analyzed separately

	Description	Start	End	# Months <sup>a</sup>
A	Entire 23 year record	1980	2002	276
B	Until epidemic start	1980	1990	132
C	Until epidemic end	1980	1995	192
D	Epidemic omitted	1980	2002	216
E	Epidemic end to record end	1996	2002	84
F	Epidemic only	1991	1995	60
G	Epidemic start to record end	1991	2002	144

<sup>a</sup>Number of months in period

precipitation period. Figure 4 shows the linear correlation coefficient  $r$  between the valley fever incidence anomaly  $N^*$  and the product of  $P^*$  and  $U^*$  (i.e.,  $P^*U^*$ ) from 1980 to 2002. The maximum bivariate  $r$  value is about 0.25. This offers no significant improvement in incidence predictability relative to univariate regressions.

Figure 4 has two bands of bivariate significance, centered on precipitation anomalies 6–10 and 18–22 months prior to incidence anomalies. The wind speed anomaly seems to have no preferred phasing with respect to the precipitation anomaly; 27 and 19 regression coefficients are significant ( $0.01 < p < 0.05$ ) and highly significant ( $p < 0.01$ ), respectively. With  $25 \times 25 = 625$  regression coefficients, we expect about six false positives at the highly significant ( $p < 0.01$ ) level. Hence, precipitation anomalies about 8 and 20 months prior to incidence both appear to play a statistically significant, detectable role in determining incidence. The 12 month offset between bands of statistical significance is consistent with the lifecycle discussed above. Due to its relative drought-tolerance, *C. immitis* populations are thought to rebound after rainy seasons following a prolonged drought.

Are temperature anomalies better incidence predictors in Kern County when combined with precipitation? We computed the linear correlation coefficient  $r$  between the valley fever incidence anomaly  $N^*$  and the product of precipitation and temperature anomalies from 1980 to 2002. The result (not shown) is very similar to Fig. 4 and leads to the conclusion that coupling of  $T_s^*$  to  $P^*$  explains less of  $N^*$  than does coupling of  $U^*$  and  $P^*$ .

### Epidemic years

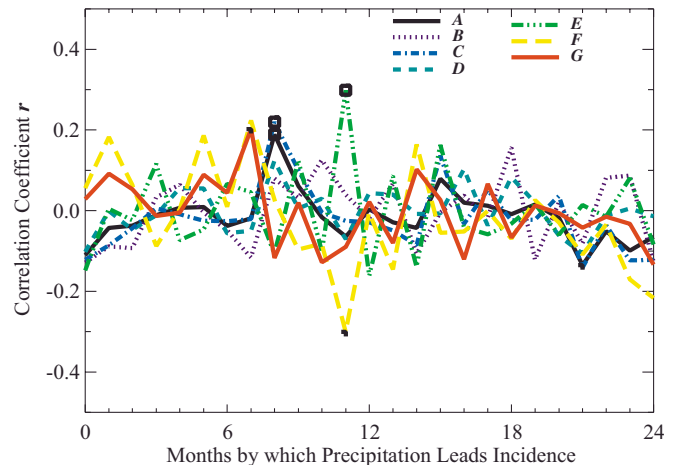
During the 1991–1995 epidemic, annual incidence  $N$  increased 5- to 10-fold, from 50 to 500 year<sup>-1</sup>(100,000)<sup>-1</sup> (cf. Fig. 1). In non-epidemic years, 65% of cases are reported between November and January. The epidemic amplified this strong late-fall early-winter seasonality. During the 1991–1995 epidemic, 59% of the anomalous (actual minus expected) cases were reported in November–January. This dramatic seasonal increase appears in the annualized monthly variability in  $N$  (Fig. 1). Incidence reports for 2001–2002 also show a significant increase above the long-term background level. Thus, understand-

ing factors contributing to epidemic outbreaks is of current concern in California.

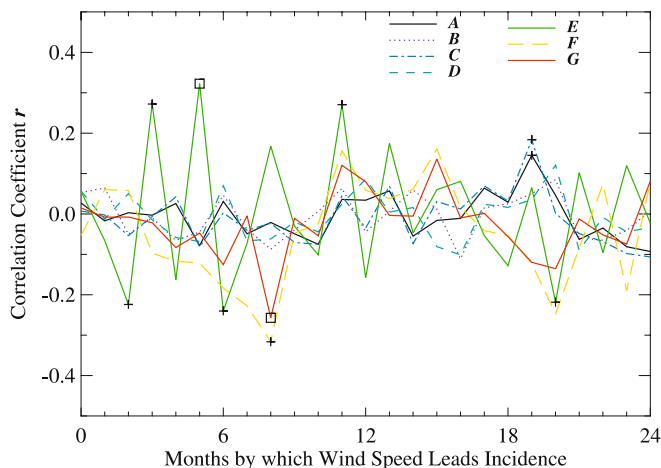
In order to help distinguish climatic from demographic causes of the 1991–1995 epidemic, we divided the data into pre-epidemic, epidemic, and post-epidemic time-series and analyzed them separately. Table 2 describes the six subset time periods that we extracted and analyzed separately from the full time-series. We examined these subset time-series for significant changes in the correlations between precipitation and wind speed anomalies with valley fever incidence.

Figure 5 shows the linear correlation coefficient  $r$  between the monthly valley fever incidence anomaly  $N^*$  and the precipitation anomaly  $P^*$  for the seven different periods enumerated in Table 2. (Series A, containing all available monthly data, also appears in Fig. 3). The trends and phasing generally agree among the subset time-series. The highly significant correlation ( $p < 0.01$ ) of wet anomalies with incidence anomalies 8 months later appears in the entire 23 year record (Series A) and from 1980–1995 (Series C). Examination of monthly time-series (not shown) reveals that winter (February–March) rains influence incidence the following winter (December–January), a pattern noted previously (Smith et al. 1946; Hugenholtz 1957; Pappagianis 1988; Jinadu 1995; Kolivras and Comrie 2003).

Since the epidemic, from 1996 to 2002 (Series E), precipitation anomalies occur 11 months before incidence anomalies with  $r = 0.03$  ( $p = 0.0059$ ). Incidence during the 1991–1995 epidemic (Series F) shows no highly significant features. We note that the correlation required for a given confidence level is much greater for Series F due to its short length (60 months). The significant negative correlation with precipitation 11 months prior may be a false positive since this would be inconsistent with Series E and with what is known presently of the lifecycle of *C. immitis*. On the other hand, Zender and Kwon (2005) show that dry anomalies in the previous rainy season are highly



**Fig. 5** Lag correlation coefficient  $r$  between valley fever incidence anomaly  $N^*$  and precipitation anomaly  $P^*$  for the periods shown in Table 2. Pluses (+) and squares (□) indicate confidence statistics  $p$  better than 5% and 1%, respectively



**Fig. 6** As Fig. 5, but for lag correlation coefficient  $r$  between valley fever incidence anomaly and wind speed anomaly  $U^*$

significantly associated with increased soil dispersion 9 months later in many of Earth's dustiest regions. Hence increased incidence 2 months following increased dispersal is a plausible alternative explanation of the Series F behavior. Considered altogether, the indications of a significant connection between rainfall and incidence changes in epidemic years are unclear and somewhat contradictory.

Figure 6 shows the linear correlation coefficient  $r$  between the valley fever incidence anomaly  $N^*$  and the wind speed anomaly  $U^*$  for the periods shown in Table 2. Most of the statistically significant relationships of wind speed to incidence anomalies occur since the epidemic, from 1996 to 2002 (Series E). During this period, wind speed anomalies occur 5 months before incidence anomalies with a correlation  $r=0.32$  ( $p<0.01$ ). However, the significant correlations rapidly alternate from positive to negative during the first 6 months before incidence. Thus, interpreting the significant wind speed anomalies as causally related to valley fever is problematic. Since 1991 (Series G), incidence anomalies occur 8 months after opposite wind speed anomalies with  $r=0.42$  ( $p<0.01$ ). This feature may be a cross-correlation artifact. As discussed above, winter rainfall anomalies dominate incidence anomalies with an 8-month lag from 1980 to 2002 (Fig. 5). Winds are slowest in winter (Fig. 2c) and so may (coincidentally) anti-correlate with 1991–2002 monthly incidence anomalies, but not with the entire incidence dataset (Series A).

## Discussion

Univariate analyses showed that the maximum correlation between incidence and climate anomalies ( $r=0.19$  for  $N^*$  following  $P^*$  by 8 months) explains only  $r^2=4\%$  of monthly incidence anomalies. This is too low to be useful in practical associations between climate predictions and valley fever incidence. However, incidence anomalies  $N^*$  are quite complex, and can reach 1,000% in epidemic years

—so predicting a small fraction of this large variability is promising.

Seasonal climate predictors of valley fever in Kern County are similar to, but much weaker than, those in Arizona. Komatsu et al. (2003) examined climate and valley fever incidence for the 4 year span from 1998 to 2001 in Maricopa County, Arizona. They report highly significant ( $p<0.01$ ) correlations between incidence with 7-month cumulative precipitation ( $r^2=0.75$ ), 2-month cumulative precipitation, 3-month mean temperature, and coarse aerosol (PM10) load.

The discrepancy between climate associations with valley fever in California and recent years in Arizona are not understood. The differences in climate, methodology, and sampling between our study and Komatsu et al. (2003) are significant, and possibly large enough to explain these discrepancies. In particular, late summer southwest monsoon rains occur in Arizona but not in California. This pattern is consistent with the stronger annual cycle of incidence in California.

We speculate that saltation-sandblasting, rather than direct wind entrainment, is the normal mechanism by which wind mobilizes and disperses soil pathogens such as *C. immitis*. Saltation-sandblasting theory improves the predictive capability of long-range mineral aerosol transport models (Grini and Zender 2004) and so could improve dispersal modeling of airborne soil pathogens, including *C. immitis*.

Changes in the Mojave habitat for *C. immitis* may be significant in the coming century. Significant increases in temperature and precipitation are expected in western North America as a whole over the next century (Giorgi et al. 2001). Unfortunately regional scale projections are much more robust for temperature than for precipitation. In some scenarios (Electric Power Research Institute 2003; Hayhoe et al. 2004), increased precipitation will cause desert areas of Kern County and uplands of the Mojave Desert to make the transition to grassland by 2100. The Mojave is currently too dry to sustain *C. immitis* (Kolivras et al. 2001) because it receives  $P<10$  cm year<sup>-1</sup>, about one-half of what Kern County receives. We speculate that the Mojave might become a suitable environment for *C. immitis* were it to moisten significantly over a prolonged period. A significant portion of the Los Angeles metropolitan region is downwind of the Mojave during Santa Ana wind events. Santa Anas occur most frequently (3–4 days month<sup>-1</sup>) in November–January (Raphael 2003), coincident with peak valley fever incidence in Kern County. Given the public-health-related implications, the Mojave Desert is a natural focus region for future valley fever habitat and dispersion modeling using down-scaled climate predictions.

## Conclusions

We tested monthly precipitation, wind speed, and temperature anomalies as potential predictors for valley fever incidence anomalies in Kern County from 1980 to 2002.

The only climate indicator with highly significant correlations with incidence during this period is the precipitation anomaly. Precipitation anomalies 8 months antecedent to reporting explain only up to 4% of monthly variability in subsequent valley fever incidence. Wind speed anomalies 5 months antecedent are highly significantly associated with incidence since the epidemic, i.e., from 1996 to 2002. The relatively small correlation of incidence with climate suggests that anthropogenic factors (e.g., construction) may play a large role in valley fever outbreaks in Kern County.

None of the potential climate indicators of incidence that we tested were highly significantly correlated with the 1991–1995 epidemic. Other potential univariate climate indicators of incidence (e.g., accumulated 7-month precipitation, wind gustiness) and multi-variate climate indicators (e.g., drought index) may show more predictive skill than those we tested (Komatsu et al. 2003). Seasonal climate predictors of valley fever in Kern County are similar to, but much weaker than, those in Arizona, where previous studies find precipitation explains up to 75% of incidence. Causes for the discrepancy between climate associations with valley fever in California and Arizona require further study.

Incidence reports for 2001–2003 in Kern County show a significant increase above the long-term background level, unprecedented except for the 1991–1995 epidemic. Reliable predictors of incidence will be extremely valuable whether or not current incidence rates continue to rise. Higher resolution temporal and spatial monitoring of soil conditions in Kern County may improve our understanding of climatic antecedents of valley fever epidemics.

**Acknowledgements** The authors thank two anonymous reviewers for detailed comments that greatly improved the original manuscript. Discussions with Thomas Larwood and Richard Reynolds improved the quality of this manuscript. Shu Sebesta of the California Department of Health Services provided incidence data. The Valley Fever Center for Excellence provided valuable on-line data. This research was supported in part by NASA Grants NAG5-10147 and NAG5-10546 and by the NCAR Advanced Studies Program.

## References

- Alfaro SC, Gaudichet A, Gomes L, Maillé M (1997) Modeling the size distribution of a soil aerosol produced by sandblasting. *J Geophys Res* 102:11239–11249
- Barnato AE, Sanders GD, Owens DK (2001) Cost-effectiveness of a potential vaccine for *Coccidioides immitis*. *Emerg Infect Dis* 7:797–806
- Centers for Disease Control and Prevention (1994) Update: Coccidioidomycosis—California 1991–1993. *Morb Mortal Wkly Rep* 43:421–423
- Centers for Disease Control and Prevention (1996) Coccidioidomycosis—Arizona, 1990–1995. *Morb Mortal Wkly Rep* 45:1069–1073
- Chatfield C (2004) The analysis of time series. Texts in statistical science, 6th edn. Chapman & Hall/CRC, Boca Raton, FL
- Deresinski SC (1980) History of coccidioidomycosis: “dust to dust”. In: DA Stevens (ed) *Coccidioidomycosis*. Plenum, New York, pp 1–20
- Electric Power Research Institute (2003) Global climate change in California: potential implications for ecosystems, health, and the economy. Consultant Report 500-03-058CF, California Energy Commission, Sacramento, CA
- Galgiani JN (1999) Coccidioidomycosis: a regional disease of national importance. *Ann Intern Med* 130:293–300
- Gillette DA, Hardebeck E, Parker J (1997) Large-scale variability of wind erosion mass flux rates at Owens Lake 2. Role of roughness change, particle limitation, change of threshold friction velocity, and the Owen effect. *J Geophys Res* 102:25989–25998
- Giorgi F, Hewitson B, Christensen J, Hulme M, Storch HV, Whetton P, Jones R, Mearns L, Fu C (2001) Regional climate information - evaluation and projections. In: Houghton JT, Ding Y, Griggs DJ, Noguer M, van der Linden PJ, Dai X, Maskell K, Johnson CA (eds) *Climate Change 2001: the scientific basis*. Contribution of Working Group I to the Third Assessment Report of the Intergovernmental Panel on Climate Change, chapter 10. Cambridge University Press, Cambridge, UK, pp 585–638
- Glantz MH, Katz RW, Nicholls N (eds) (1991) *Teleconnections linking worldwide climate anomalies: scientific basis and societal impact*. Cambridge University Press, New York, NY
- Grini A, Zender CS (2004) Roles of saltation, sandblasting, and wind speed variability on mineral dust aerosol size distribution during the Puerto Rican Dust Experiment (PRIDE). *J Geophys Res* 109:D07202
- Grini A, Zender CS, Colarco P (2002) Saltation sandblasting behavior during mineral dust aerosol production. *Geophys Res Lett* 29:1868
- Hayhoe K, Cayan D, Field CB, Frumhoff PC, Maurer EP, Miller NL, Moser SC, Schneider SH, Cahill KN, Cleland EE, Dale L, Drapek R, Hanemann RM, Kalkstein LS, Lenihan J, Lunch CK, Neilson RP, Sheridan SC, Verville JH (2004) Emissions pathways, climate change, and impacts on California. *Proc Natl Acad Sci U S A* 101:12422–12427
- Hillel D (1982) *Introduction to Soil Physics*. Academic, San Diego, CA
- Hughenoltz PG (1957) Climate and coccidioidomycosis. In: *Proceedings of the Symposium on Coccidioidomycosis*, Phoenix, Arizona. Public Health Service, Washington, D.C., pp 136–143
- Iversen JD, White BR (1982) Saltation threshold on Earth, Mars, and Venus. *Sedimentology* 29:111–119
- Jinadu BA (1995) Valley Fever Task Force report on the control of *Coccidioides immitis*. Technical Report, Kern County Health Department, Bakersfield, CA
- Kirkland TN, Fierer J (1996) Coccidioidomycosis: a reemerging infectious disease. *Emerg Infect Dis* 3:192–199
- Kolivas KN, Comrie AC (2003) Modeling valley fever (coccidioidomycosis) incidence on the basis of climate conditions. *Int J Biometeorol* 47:87–101
- Kolivas KN, Johnson PS, Comrie AC, Yool SR (2001) Environmental variability and coccidioidomycosis (valley fever). *Aerobiologia* 17:31–42
- Komatsu K, Vaz V, McRill C, Colman T, Comrie AC, Sigel K, Clark T, Phelan M, Hajjeh R, Park B (2003) Increase in coccidioidomycosis—Arizona, 1998–2001. *Morb Mortal Wkly Rep* 52:109–112
- Larwood TR (2000) Coccidin skin testing in Kern County, California: decrease in infection rate over 58 years. *Clin Infect Dis* 30:612–613
- Maddy KT (1957) Ecological Factors possibly relating to the geographic distribution of *Coccidioides immitis*. In: *Proceedings of the Symposium on Coccidioidomycosis*, Phoenix, Arizona. Public Health Service, Washington, D.C., pp 144–157
- Maddy KT, Coccoza J (1964) The probable distribution of *Coccidioides immitis* in Mexico. *Bol Of Sanit Panam* 44–54
- McKenna-Neuman C, Nickling WG (1989) A theoretical and wind tunnel investigation of the effect of capillary water on the entrainment of sediment by wind. *Can J Soil Sci* 69:79–96
- Pappagianis D (1988) Epidemiology of coccidioidomycosis. In: McGinnis M (ed) *Current topics in mycology*, vol 2. Springer, New York Berlin Heidelberg, pp 199–238

- Pappagianis D, Einstein H (1978) Tempest from Tehachapi takes toll or Coccidioides conveyed aloft and afar. *West J Med* 129:527–530
- Raphael MN (2003) The Santa Ana winds of California, *Earth Interact* 7:15
- Shao, Y, Lu, H (2000) A simple expression for wind erosion threshold friction velocity. *J Geophys Res* 105:22437–22443
- Smith CE, Beard RR, Rosenberger HG, Whiting EG (1946) Effect of season and dust control on coccidioidomycosis. *J Am Med Assoc* 132:833–838
- Zender, CS, Kwon, EY (2005) Regional contrasts in dust emission responses to climate. *J Geophys Res* 110:D13201