

UC Office of the President

Recent Work

Title

The impact of prenatal parental tobacco smoking on risk of diabetes mellitus in middle-aged women

Permalink

<https://escholarship.org/uc/item/3qd6k16x>

Journal

Journal of Developmental Origins of Health and Disease, 6(03)

ISSN

2040-1744 2040-1752

Authors

La Merrill, M. A
Cirillo, P. M
Krigbaum, N. Y
[et al.](#)

Publication Date

2015-02-10

DOI

10.1017/S2040174415000045

Peer reviewed

The impact of prenatal parental tobacco smoking on risk of diabetes mellitus in middle-aged women.

Michele A. La Merrill PhD¹, Piera M. Cirillo MPH², Nickilou Y. Krigbaum MPH², and Barbara A. Cohn PhD²

¹Department of Environmental Toxicology, University of California, Davis, Davis, California, USA; ²Child Health and Development Studies, Public Health Institute, Berkeley, California, USA

Correspondence and reprint requests to

Michele La Merrill

Department of Environmental Toxicology

University of California at Davis

1 Shields Avenue

4245 Meyer Hall

Davis, CA 95616-5270

mlamerrill@ucdavis.edu

Phone: (530) 752-1142

Fax: (530) 752-3394

Short title: Prenatal tobacco & offspring diabetes mellitus

Abstract:

Growing evidence indicates parental smoking is associated with risk of offspring obesity. The purpose of this study was to identify whether parental tobacco smoking during gestation was associated with risk of diabetes mellitus. This is a prospective study of 44-54 year old daughters (N=1,801) born in the Child Health and Development Studies pregnancy cohort between 1959 and 1967. Their mothers resided near Oakland California, were members of the Kaiser Foundation Health Plan, and reported parental tobacco smoking during an early pregnancy interview. Daughters reported physician diagnoses of diabetes mellitus and provided blood for hemoglobin A1C measurement. Prenatal maternal smoking had a stronger association with daughters' diabetes mellitus risk than prenatal paternal smoking, and the former persisted after adjustment for parental race, diabetes, and employment (aRR=2.4 [95% confidence 1.4-4.1] $p<0.01$ and aRR=1.7 [95% confidence 1.0-3.0] $p=0.05$, respectively). Estimates of the effect of parental smoking were unchanged when further adjusted by daughters' birth weight or current BMI. Maternal smoking was also significantly associated with self-reported of type 2 diabetes diagnosis (2.3 [95% confidence 1.0-5.0] $p<0.05$). Having parents who smoked during pregnancy was associated with an increased risk of diabetes mellitus among adult daughters independent of known risk factors, providing further evidence that prenatal environmental chemical exposures independent of birth weight and current BMI may contribute to adult diabetes mellitus. While other studies seek to confirm our results, caution toward tobacco smoking by or proximal to pregnant women is warranted in diabetes mellitus prevention efforts.

Key words: birth weight, diabetes, obesity, smoking, tobacco

Introduction

Environmental tobacco smoke (ETS) remains a common modifiable exposure worldwide, with over 126 million non-smoking American adult and children exposed.¹ Both adult and childhood ETS exposures are associated with increased risk of insulin resistance, glucose intolerance, and type 2 diabetes.²⁻⁶ These findings raise the possibility that fetal ETS exposure, either through active or passive maternal smoking during pregnancy, may also increase risk of diabetes.

Both active and passive maternal tobacco exposure are known to increase the risk of numerous pregnancy complications, including low birth weight.⁷⁻⁹ Further, emerging yet extensive human and experimental evidence indicates that maternal tobacco exposure during pregnancy also increases risk of obesity in offspring.¹⁰⁻¹² Given low birth weight and obesity are also associated with increased risk of diabetes in adulthood,¹³⁻¹⁶ it is plausible that fetal ETS could lead to increased risk of diabetes in adulthood through low birth weight and/or BMI.^{17, 18} While the direction of the association of active maternal smoking with offspring diabetes varies across studies,^{10, 18} it is unclear if these discrepancies result from exposure bias due to variability in women's willingness to report smoking during pregnancy.¹⁹⁻²¹

Whether paternal smoking can contribute to fetal response to ETS exposure is seldom considered in observational studies. We know of two human studies which demonstrated protective associations between offspring type 1 diabetes and paternal smoking,^{22, 23} and one study which demonstrated paternal smoking was associated with increased risk of offspring type 2 diabetes.¹⁸ Despite these sparse discrepancies, the positive association between paternal smoking and offspring obesity^{12, 16, 18, 24-26} suggests paternal smoking may at least be associated with increased risk offspring diabetes risk indirectly via its association with obesity.

There is insufficient evidence to conclude whether fetal ETS exposure via parental smoking contributes to risk of diabetes mellitus. Indeed, the assessment of maternal smoking and risk of offspring type 2 diabetes was identified as a research need in a recent review.¹⁰ Here we hypothesize that parental tobacco smoking is associated with increased risk of diabetes mellitus in middle-aged offspring. We tested our hypothesis in a prospective birth cohort, the Child Health and Development Studies (CHDS), with parental tobacco smoking identified by self-report that has been validated by serum cotinine levels.²⁷

Method

Population

The CHDS is a pregnancy cohort designed to evaluate the associations between prenatal exposures and health outcomes in the parents and offspring. The CHDS recruited women who were members of the Kaiser Foundation Health Plan based in Oakland, California between 1959 and 1967.²⁸ The CHDS participants gave verbal consent for an in-person interview generally conducted at the first prenatal visit, and gave permission for access to their medical records and their children's medical records.

The present study evaluates the adult daughters who were born into the CHDS cohort and participated in a recent follow-up study from 2010-2013, the "Three Generations (3Gs) Study". Women were eligible for the 3Gs Study if they: did not have a severe congenital illness that would preclude participation, were willing to receive invitations to new studies, and were not incarcerated or too ill to participate. The eligible pool (n = 8,401) constituted 92% of all live-born CHDS daughters and the 82% (n = 6,905) who were address-locatable were mailed an invitation to the study. After the initial invitation was mailed to the address-locatable eligible

pool, 43 refused, another 55 were identified as deceased or ineligible, and 590 were identified with an incorrect address. Of the remaining eligible 6,217 who were address locatable, 80% (n = 5,003) were phone locatable and were attempted for telephone contact and 60% completed a telephone interview (n = 3,003). Just over a third of the telephone interview participants also participated in a home visit (n = 1,194) during which a certified phlebotomist collected non-fasting blood. The number of home visits and the number of A1C assays that were performed (N=557 randomly selected from the pool of daughters with available whole blood samples) was determined by availability of resources. The home visit sample targeted three groups: daughters of mothers with breast cancer, daughters who had participated in an earlier (2005-2008) breast density study, and a random sample of daughters with an over-sample of African Americans.

The present analysis sample is based on 1,801 daughters with available data on parental tobacco smoking during pregnancy, race, occupation, report of parental diabetes and self-report of body weight. Of the 1,801 daughters, 307 had A1C measures. The analysis sample includes forty-eight sister pairs and one set of three sisters. There are proportionately fewer African Americans and fewer daughters born preterm and low birth weight in the analysis sample compared to the entire CHDS cohort. Parents of daughters included in the analysis were more educated, had higher incomes, lower parity and smoked less at study entry.

Verbal consent was required for the telephone interview and signed written consent was required prior to initiation of the home visit. The 3Gs Study was approved by the institutional review board of the Public Health Institute.

Parental tobacco use

Parental tobacco use during the index pregnancy was defined by maternal self-report. Only mothers who reported they smoked at least one cigarette a day were considered tobacco smokers. Paternal tobacco smoking was ascertained from pregnant women who reported their husbands currently smoked at least one cigarette a day, or currently smoked a pipe or cigar at least once weekly. We analyzed household smoking simultaneously in four separate categories where 1) only mothers smoked, 2) only husbands smoked, 3) both mothers and husbands smoked, and 4) neither mothers nor husbands smoked. Smoking data was collected before the impact of the 1964 Surgeon General's Report. This report is widely considered the turning point that initiated anti-smoking attitudes in America.^{29,30} Therefore we suggest that most women were willing to accurately report smoking behavior. The validity of maternal self-report is further supported by concordance with measured serum cotinine levels previously demonstrated in the CHDS.²⁷

Potential covariates

During the prenatal interview, mothers reported their race/ethnicity, height, pre-pregnancy weight, and occupation. They also reported race/ethnicity, height, weight and occupation for their husbands. Height and weight were used to calculate BMI (kg/m^2) for each parent, from which BMI was dichotomized as $\text{BMI} \geq 25$ (obese or overweight) vs. $\text{BMI} < 25$ (normal).³¹ Report of husbands with professional, technical, or managerial occupations were categorized as professional. Report of husbands in occupations with clerical, sales, or operative duties or working as craftsmen, foremen, service workers, laborers, or members of the armed services were grouped into an 'other occupation' category. Mothers who reported professional or managerial jobs were categorized as professional while mothers reporting their work was

homemaking, secretarial, clerical, servicing or industrial were grouped into an ‘other occupation’ category.

Mothers’ date of last menstrual period was reported by mothers during their in-person prenatal interview. Birth dates of daughters were obtained from medical records. These were used to calculate daughters’ gestational age to the nearest completed week. Birth weight was also extracted from obstetric records. Because birth weight tends to have a non-linear association with diabetes risk later in life, it was categorized as low birth weight (< 2,500 g), healthy birth weight, and macrosomia (> 4,000 g).^{13, 32-34}

Adult daughters’ interview and blood draw dates were used with birth dates to calculate age (in years) at interview and blood draw. Tobacco use (ever vs. never), current height and weight and daughters’ report of a parent having ever been diagnosed with diabetes mellitus was determined from telephone interview of daughters. Daughters’ self-reported height and weight were used to calculate BMI, where BMI < 25 was considered normal, $25 \leq \text{BMI} < 30$ was considered overweight, and BMI ≥ 30 was considered obese.³¹

Diabetes Mellitus

During their adult interview, daughters reported whether a doctor ever told them they have diabetes. Daughters were asked to exclude diabetes that only occurred during pregnancy. Daughters were also asked how old they were when they were first diagnosed with diabetes, and what type of diabetes they were told they had. Whole blood hemoglobin A1C was measured from a subset of daughters who participated in the home visit by the Clinical and Epidemiologic Research Laboratory of the Boston Children’s Hospital. We principally defined cases of diabetes mellitus as those daughters whose doctors ever told them they had diabetes while not pregnant

and/or whose A1C \geq 6.5% (47.5 mmol/mol).³⁵ In four secondary analyses, we 1) restricted case status to only those daughters who reported diagnosed diabetes, which ignored A1C status, 2) restricted case status to only those daughters who reported a doctor telling them they had type 2 diabetes, which ignored report of type 1 diabetes and A1C status, 3) restricted cases to the subset of non-siblings, and 4) restricted cases to the subset of non-siblings plus one randomly selected sister from each family. These secondary analyses were performed to exclude the potential impact of the home visit sampling criteria and of the sibling sampling, and to facilitate comparison with other studies.

Statistical Analysis

Prevalences were calculated in PROC FREQ (SAS 9.4, Cary, NC). We modeled the effect of the four parental smoking categories on continuous outcomes to calculate least square means, their standard errors, and their significance while accounting for random effects of potential correlations among siblings in PROC MIXED. We modeled the effect of the parental smoking categories on dichotomous outcomes to calculate risk ratios, their confidence intervals (CI), and their significance while accounting for random effects of potential correlations among siblings in PROC GENMOD. To further examine the potential impact of including siblings on the estimation of smoking effects, we ran models on subsets including only non-siblings and including non-siblings plus one randomly selected sister per family. Variables which changed the size of the parameter estimated for any parental smoking category by 10% or more, or were found to be statistically significant predictors in the saturated model, were included as covariates in the multivariable models (GENMOD).⁷ The prevalences and risks determined in PROC FREQ and PROC GENMOD were used for post hoc power calculations (PROC POWER). We

evaluated the onset of type 2 diabetes as a time-dependent function of parental smoking categories by testing the significance of cross product terms between type 2 diabetes onset (age at diagnosis) and parental smoking (categories described above) while accounting for the main effect of parental smoking and random effects of potential correlations among siblings in PROC PHREG. PROC LIFETEST was used to generate data graphed in GraphPad Prism 6 (La Jolla, CA).

Results

The distribution of parental tobacco smoking during pregnancy across the variables we considered in our analyses is shown in Table 1. As expected, daughters' mean birth weight was significantly reduced in households with maternal tobacco smoking. We further found that maternal, but not paternal, BMI was also negatively associated with parental tobacco smoking status. Conversely, paternal, but not maternal, diabetes was associated with parental tobacco smoking.

Numerous aspects of daughters' adult metabolic health were also associated with parental tobacco smoking during gestation (Table 1). Paternal tobacco smoking was significantly associated with a 1 kg/m² increase in the mean of daughters' BMI (maternal only tobacco use was non-significant, $p = 0.16$). In contrast, maternal smoking during pregnancy was associated with increased risk of daughters' self-reported type 2 diabetes (paternal only tobacco use was non-significant, $p = 0.08$). The number of cases defined by type 1 diabetes report and A1C status were far less than those defined by type 2 diabetes report in this sample. Despite small numbers, there was a significant association of parental smoking on type 1 diabetes, with an absence of type 1 diabetes cases among non-smoking households and the highest prevalence of type 1

diabetes cases occurring among daughters with *in utero* exposure to paternal tobacco smoke. A1C measurement status and mean percent A1C among daughters did not differ across parental tobacco use categories. Although missing information about parental smoking during pregnancy was the main source of sample attrition from the 3,003 telephone interviews, the absence of parental smoking data was not significantly associated with diabetes mellitus ($p = 0.8$).

To maximize the accuracy of case ascertainment, we defined diabetes mellitus from both self-report of doctor-diagnosed diabetes for all 1,801 women and from measured A1C for a random subset of 370 women as shown in Table 2. The inclusion of diabetes mellitus cases defined by $A1C \geq 6.5\%$ (47.5 mmol/mol) led to the identification of an additional 10 diabetes mellitus cases not identified by self-report. Some of these 10 cases identified exclusively by A1C are consistent with a recent development of diabetes, as four of these ten women had $A1C \geq 6.5\%$ (47.5 mmol/mol) during a home visit which occurred 1-2 years after they reported their diabetes status. Because we did not measure auto-antibodies to distinguish type 1 diabetes from type 2 diabetes, and did not identify what clinical parameter physicians utilized to diagnose diabetes, we conservatively describe our primary outcome of interest as diabetes mellitus. However, we also provide results for self-reported type 2 diabetes mellitus alone to facilitate comparisons with other studies.

Women prenatally exposed to only maternal smoking had an unadjusted three-fold increased risk of diabetes mellitus (Table 3). Women exposed to only paternal smoking while *in utero* had an unadjusted two-fold increased risk of diabetes mellitus (Table 3). Our analyses included 48 sister pairs and one set of three sisters among the 1,801 daughters. To evaluate the potential contribution of siblings to our analyses, we also restricted analyses to the subset of non-siblings and the subset of non-siblings plus one randomly selected sister from each family. These

associations were the same (data not shown) as those reported in Table 3. In order to determine whether these unadjusted associations were robust to confounding and known risk factors, variables in Table 1 were considered for inclusion in the adjusted multivariable models presented in Table 3. After adjustment by other significant variables (parental race, parental diabetes, parental professional employment), both maternal and paternal tobacco smoking continued to be associated with increased risk of daughters' diabetes mellitus (Table 3). Paternal smoking had a marginally significant association with daughters' diabetes mellitus risk. However, there was no evidence of a further increase in daughters' risk of diabetes mellitus when both parents smoked compared to the risk when only mothers smoked.

The associations between parental tobacco smoking and daughters' diabetes risk were unchanged when birth weight was added to the final adjusted models, suggesting that the effect of maternal tobacco smoking on birth weight (Table 1) did not mediate the association of maternal tobacco use and daughters' diabetes mellitus. We observed an increase in adult daughters' BMI associated with paternal smoking (Table 1), however associations between parental smoking and daughters' diabetes were unaltered after adjusting for daughters' BMI (Table 3). This suggests that the effect of paternal tobacco use on daughters' diabetes risk was not mediated by daughters' BMI. In all adjusted models, paternal smoking was associated with a 70% increased risk of daughters' diabetes mellitus that hovered around significance, while maternal smoking was associated with a significant two- to three- fold risk of diabetes mellitus among daughters. A post hoc power calculation for our sample scenario estimated a 43% probability to detect an effect size of 70% or greater at a significance threshold of $\alpha = 0.05$.

To confirm the results of Table 3 were not an artifact of case definition, the adjusted model of Table 3 was applied to two alternative definitions of diabetes. When only cases of self-

reported diabetes were included in our case definition (misclassifying ten cases where A1C \geq 6.5% (47.5 mmol/mol), Table 2), the aRR were essentially unchanged (aRR = 2.6 [95% CI 1.2 - 5.5] $p < 0.05$, 1.7 [95% CI 1.0 - 3.0] $p = 0.07$, and 2.2 [95% CI 1.2 - 3.8] $p < 0.01$ for maternal-, paternal-, and parental- tobacco use respectively). Similarly when only cases of self-reported type 2 diabetes were included in our case definition (ignoring self-reported type 1 diabetes and A1C), the aRR were essentially the same as reported in Table 3 (aRR = 2.3 [95% CI 1.0-5.0] $p < 0.05$, 1.3 [95% CI 0.7-2.4] $p = 0.3$, and 2.1 [95% CI 1.2-3.7] $p < 0.05$ for maternal-, paternal-, and parental- tobacco use respectively). There was no evidence of time-dependence among the association of parental tobacco smoking and the age of onset of self-reported type 2 diabetes (Fig 1). There were too few cases of self-reported type 1 diabetes to assess a potential time-dependent association of parental tobacco smoking.

Discussion

We prospectively assessed over 1,800 women to evaluate the association between diabetes mellitus and parental tobacco smoking during gestation. Daughters' risk of diabetes mellitus was increased in association with either both parents smoking or only the mother smoking during gestation. This association supports the hypothesis that parental tobacco smoking is associated with increased risk of diabetes mellitus in adult offspring, and is consistent with the hypothesis that prenatal environmental chemical exposures independent of birth weight may contribute to the developmental origins of health and disease.^{13, 36} Further, this is the first study to demonstrate that parental smoking during gestation is associated with increased risk of diabetes mellitus independent of BMI.^{17, 18} This novel finding is biologically plausible as rodents prenatally exposed to nicotine have a permanent loss of pancreatic beta cells commencing at

birth,³⁷ prior to the occurrence of increased body and/or fat weight in rodents with prenatal nicotine or cigarette exposure.¹⁰

There are a limited number of studies that have evaluated the association of maternal tobacco smoking during gestation with risk of offspring diabetes, and none of these studies isolated the sole effects of maternal smoking separate from the co-occurrence of paternal smoking or other prenatal ETS exposures.^{10, 18} Further, the majority (85%) of these studies evaluated births occurring after the 1964 Surgeon General's Report which was the pivotal report that warned against smoking and initiated the change in smoking attitudes.^{5, 18, 29, 30, 38-48} Thus the negative findings of these studies may be due to misclassification bias associated with underreporting of parental smoking exposure during gestation.¹⁹⁻²¹ In contrast, the CHDS enrollment period largely predated public health anti-smoking campaigns for women and as expected, self-reported tobacco smoking is consistent with serum cotinine levels in the CHDS cohort.²⁷ We suggest that our study is more robust to misclassification bias associated with response to anti-smoking public health campaigns.^{29, 30}

All other known studies of prenatal smoking associations with offspring diabetes that were also conducted prior to the Surgeon General Report were conducted in the United Kingdom. The majority of these studies also found an increased risk of offspring diabetes mellitus associated with maternal smoking during gestation.^{17, 22, 49, 50} Similar to the results reported here, the National Child Development Study of the United Kingdom found an increased risk of type 2 diabetes among offspring of mothers who smoked.⁴⁹ Another study predating the Surgeon General warning reported that the significant association between prenatal maternal smoking and type 2 diabetes was mediated by the birth weight and BMI of offspring,¹⁷ however birth weight and BMI did not appear to be mediators of the association between prenatal

maternal smoking and diabetes risk here. These discrepancies may reflect our inclusion of paternal smoking and all cases of diabetes mellitus.

The effect of paternal smoking (risk increased by 70%) was smaller than that seen for maternal smoking (risk increased by 170%). Even though we were underpowered to find a modest paternal effect, we observed one with marginal statistical significance. Thus we cannot exclude the possibility that paternal smoking has a small effect on daughters' diabetes risk. One larger study ascertaining paternal smoking status in 2001 found a smaller association between paternal smoking and diabetes risk, which is consistent with the 95% confidence interval we observed in this study.¹⁸ In contrast, two European studies spanning the release of the Surgeon General's 1964 Report found a decreased risk of type 1 diabetes associated with paternal smoking.^{22, 23} While we were also underpowered to evaluate small associations of parental smoking and offspring type 1 diabetes, it is notable that the majority of our type 1 diabetes cases were born in households where only fathers smoked. Further, we do not have information on postnatal smoke exposure and therefore cannot rule out a contribution of postnatal smoking to associations reported here. Although few human cohorts are positioned to confirm our results, larger birth cohorts that collected data on paternal tobacco smoking during gestation prior to the Surgeon General warning should seek to confirm the association of prenatal paternal tobacco use and offspring diabetes that we observed, and should attempt to distinguish whether such an association applies to all sources of ETS exposure during prenatal and postnatal periods.

We were limited in our ability to detect all diabetes mellitus cases given we did not measure A1C in all participants, and were unable to measure autoantibodies. Consistent with misclassification bias, only 6.1% of the women of this study had diabetes mellitus, compared with 15% physician diagnosed diabetes in 2007 -2010 among 45-64 year old women of the

United States population. While our lower diabetes prevalence could also be explained by our lower obesity prevalence (26.4% here vs. 38.3% obesity among 45-54 year old women of the United States in 2009-2012),⁵¹ any bias in the classification of our diabetes mellitus cases would likely cause the risk estimates reported here to be smaller than their true size. Although the analysis sample was different from the CHDS cohort as a whole because it included fewer daughters with high risk characteristics, this weakness would likely bias toward not finding a tobacco association.

From a public health perspective, reduced fetal ETS exposure appears to be an important modifiable risk factor for diabetes mellitus in offspring. Medical doctors should consider advising pregnant smokers that emerging research suggests that tobacco smoking cessation in the home may benefit offspring by reducing their risk of developing diabetes mellitus independent of the effects of adult BMI or birth weight on diabetes risk. Given we were underpowered to significantly resolve a paternal smoking association with offspring diabetes risk and few studies conducted prior to the Surgeon General warning have designs capable of confirming our marginal paternal smoking association with risk of offspring diabetes mellitus, caution toward smoking near pregnant women is also warranted in order to prevent diabetes mellitus.

Acknowledgements

We wish to thank Mr. Gary Bradwin of the Clinical and Epidemiologic Research Laboratory of the Boston Children's Hospital for quantitating hemoglobin A1C. We thank the members of the CHDS and 3Gs Study for their participation. We thank the CHDS staff, the CHDS Participant Advisory Council and the 3Gs External Advisory Council for their support and work on this study. The authors have no relevant conflict of interest to disclose.

Financial Support

This research was supported through funding by the National Institute of Environmental Health Sciences (M.L., R00 ES019919), the Eunice Kennedy Shriver National Institute of Child Health and Human Development (B.C., HHSN275201100020C), and The California Breast Cancer Research Program Special Research Initiative (B.C., 15ZB-0186).

Conflicts of Interest

None

Ethical Standards

The authors assert that all procedures contributing to this work comply with the ethical standards of the relevant national guidelines on human experimentation (i.e., the Belmont Report), the federal regulations found at 45 CFR part 46 et seq, and has been approved by the institutional committee (i.e., the institutional review board of the Public Health Institute).

References

1. United States. Public Health Service. Office of the Surgeon General. *The health consequences of involuntary exposure to tobacco smoke : a report of the Surgeon General*, 2006. U.S. Dept. of Health and Human Services, Public Health Service, Office of the Surgeon General: Rockville, MD.
2. Henkin L, Zaccaro D, Haffner S, et al. Cigarette smoking, environmental tobacco smoke exposure and insulin sensitivity: the Insulin Resistance Atherosclerosis Study. *Ann Epidemiol.* 1999;9(5), 290-296.
3. Kowall B, Rathmann W, Strassburger K, et al. Association of passive and active smoking with incident type 2 diabetes mellitus in the elderly population: the KORA S4/F4 cohort study. *European journal of epidemiology.* 2010;25(6), 393-402.
4. Weitzman M, Cook S, Auinger P, et al. Tobacco smoke exposure is associated with the metabolic syndrome in adolescents. *Circulation.* 2005;112(6), 862-869.
5. Thiering E, Bruske I, Kratzsch J, et al. Prenatal and postnatal tobacco smoke exposure and development of insulin resistance in 10 year old children. *Int J Hyg Environ Health.* 2011;214(5), 361-368.
6. Houston TK, Person SD, Pletcher MJ, Liu K, Iribarren C, Kiefe CI. Active and passive smoking and development of glucose intolerance among young adults in a prospective cohort: CARDIA study. *Bmj.* 2006;332(7549), 1064-1069.
7. La Merrill M, Stein CR, Landrigan P, Engel SM, Savitz DA. Prepregnancy body mass index, smoking during pregnancy, and infant birth weight. *Annals of Epidemiology.* 2011;21(6), 413-420.

8. Leonardi-Bee J, Smyth A, Britton J, Coleman T. Environmental tobacco smoke and fetal health: systematic review and meta-analysis. *Arch Dis Child Fetal Neonatal Ed*. 2008;93(5), F351-361.
9. El-Mohandes AA, Kiely M, Blake SM, Gantz MG, El-Khorazaty MN. An intervention to reduce environmental tobacco smoke exposure improves pregnancy outcomes. *Pediatrics*. 2010;125(4), 721-728.
10. Behl M, Rao D, Aagaard K, et al. Evaluation of the Association between Maternal Smoking, Childhood Obesity, and Metabolic Disorders: A National Toxicology Program Workshop Review. *Environmental health perspectives*. 2013;121(2), 170-180.
11. Mattsson K, Kallen K, Longnecker MP, Rignell-Hydbom A, Rylander L. Maternal smoking during pregnancy and daughters' risk of gestational diabetes and obesity. *Diabetologia*. 2013;56(8), 1689-1695.
12. Harris HR, Willett WC, Michels KB. Parental smoking during pregnancy and risk of overweight and obesity in the daughter. *Int J Obes (Lond)*. 2013;37(10), 1356-1363.
13. Hales CN, Barker DJ, Clark PM, et al. Fetal and infant growth and impaired glucose tolerance at age 64. *Bmj*. 1991;303(6809), 1019-1022.
14. Poulsen P, Vaag AA, Kyvik KO, Moller Jensen D, Beck-Nielsen H. Low birth weight is associated with NIDDM in discordant monozygotic and dizygotic twin pairs. *Diabetologia*. 1997;40(4), 439-446.
15. Lindsay RS, Dabelea D, Roumain J, Hanson RL, Bennett PH, Knowler WC. Type 2 diabetes and low birth weight: the role of paternal inheritance in the association of low birth weight and diabetes. *Diabetes*. 2000;49(3), 445-449.

16. Narayan KM, Boyle JP, Thompson TJ, Gregg EW, Williamson DF. Effect of BMI on lifetime risk for diabetes in the U.S. *Diabetes care*. 2007;30(6), 1562-1566.
17. Thomas C, Hypponen E, Power C. Prenatal exposures and glucose metabolism in adulthood: are effects mediated through birth weight and adiposity? *Diabetes care*. 2007;30(4), 918-924.
18. Jaddoe VW, de Jonge LL, van Dam RM, et al. Fetal Exposure to Parental Smoking and the Risk of Type 2 Diabetes in Adult Women. *Diabetes care*. 2014; doi: 10.2337/dc13-1679.
19. Webb DA, Boyd NR, Messina D, Windsor RA. The discrepancy between self-reported smoking status and urine cotinine levels among women enrolled in prenatal care at four publicly funded clinical sites. *Journal of Public Health Management and Practice*. 2003;9(4), 322-325.
20. Britton GR, Brinthaup J, Stehle JM, James GD. Comparison of self-reported smoking and urinary cotinine levels in a rural pregnant population. *Journal of obstetric, gynecologic, and neonatal nursing : JOGNN / NAACOG*. 2004;33(3), 306-311.
21. Shipton D, Tappin DM, Vadiveloo T, Crossley JA, Aitken DA, Chalmers J. Reliability of self reported smoking status by pregnant women for estimating smoking prevalence: a retrospective, cross sectional study. *Bmj*. 2009;339, b4347.
22. Toschke AM, Ehlin A, Koletzko B, Montgomery SM. Paternal smoking is associated with a decreased prevalence of type 1 diabetes mellitus among offspring in two national British birth cohort studies (NCDS and BCS70). *J Perinat Med*. 2007;35(1), 43-47.
23. Rasouli B, Grill V, Midthjell K, Ahlbom A, Andersson T, Carlsson S. Risk of Autoimmune Diabetes in Adults Contrasting With Increased Risk in Overweight Men

- With Type 2 Diabetes: A 22-year follow-up of the HUNT study. *Diabetes care*. 2013;36(3), 604-610.
24. Kwok MK, Schooling CM, Lam TH, Leung GM. Paternal smoking and childhood overweight: evidence from the Hong Kong "Children of 1997". *Pediatrics*. 2010;126(1), e46-56.
 25. von Kries R, Bolte G, Baghi L, Toschke AM. Parental smoking and childhood obesity--is maternal smoking in pregnancy the critical exposure? *International Journal of Epidemiology*. 2008;37(1), 210-216.
 26. Leary SD, Smith GD, Rogers IS, Reilly JJ, Wells JC, Ness AR. Smoking during pregnancy and offspring fat and lean mass in childhood. *Obesity (Silver Spring)*. 2006;14(12), 2284-2293.
 27. English PB, Eskenazi B, Christianson RE. Black-white differences in serum cotinine levels among pregnant women and subsequent effects on infant birthweight. *Am J Public Health*. 1994;84(9), 1439-1443.
 28. van den Berg BJ, Christianson RE, Oechsli FW. The California Child Health and Development Studies of the School of Public Health, University of California at Berkeley. *Paediatric and Perinatal Epidemiology*. 1988;2(3), 265-282.
 29. Housman MG. Smoking and Health: The 1964 Surgeon General's Report as a Turning Point in the Anti-Smoking Movement. *Harvard Health Policy Review*. 2001;2(1), 118-126.
 30. Proctor RN. The history of the discovery of the cigarette-lung cancer link: evidentiary traditions, corporate denial, global toll. *Tobacco control*. 2012;21(2), 87-91.

31. Clinical Guidelines on the Identification, Evaluation, and Treatment of Overweight and Obesity in Adults--The Evidence Report. National Institutes of Health. *Obes Res.* 1998;6 Suppl 2, 51S-209S.
32. Boulet SL, Alexander GR, Salihu HM, Pass M. Macrosomic births in the united states: determinants, outcomes, and proposed grades of risk. *Am J Obstet Gynecol.* 2003;188(5), 1372-1378.
33. Wardlaw TM, World Health Organization., UNICEF. *Low birthweight : country, regional and global estimates*, 2004. WHO ;
UNICEF: Geneva
New York.
34. Chiavaroli V, Giannini C, D'Adamo E, de Giorgis T, Chiarelli F, Mohn A. Insulin resistance and oxidative stress in children born small and large for gestational age. *Pediatrics.* 2009;124(2), 695-702.
35. American Diabetes A. Diagnosis and classification of diabetes mellitus. *Diabetes care.* 2012;35 Suppl 1, S64-71.
36. Freinkel N. Banting Lecture 1980. Of pregnancy and progeny. *Diabetes.* 1980;29(12), 1023-1035.
37. Bruin JE, Kellenberger LD, Gerstein HC, Morrison KM, Holloway AC. Fetal and neonatal nicotine exposure and postnatal glucose homeostasis: identifying critical windows of exposure. *The Journal of endocrinology.* 2007;194(1), 171-178.
38. Johansson A, Hermansson G, Ludvigsson J, Group AS. Tobacco exposure and diabetes-related autoantibodies in children: results from the ABIS study. *Annals of the New York Academy of Sciences.* 2008;1150, 197-199.

39. Wahlberg J, Vaarala O, Ludvigsson J, Group AS. Asthma and allergic symptoms and type 1 diabetes-related autoantibodies in 2.5-yr-old children. *Pediatric diabetes*. 2011;12(7), 604-610.
40. Hummel M, Schenker M, Ziegler AG. Influence of perinatal factors on the appearance of islet autoantibodies in offspring of parents with type 1 diabetes. *Pediatric diabetes*. 2001;2(1), 40-42.
41. Dahlquist G, Kallen B. Maternal-child blood group incompatibility and other perinatal events increase the risk for early-onset type 1 (insulin-dependent) diabetes mellitus. *Diabetologia*. 1992;35(7), 671-675.
42. Marshall AL, Chetwynd A, Morris JA, et al. Type 1 diabetes mellitus in childhood: a matched case control study in Lancashire and Cumbria, UK. *Diabetic medicine : a journal of the British Diabetic Association*. 2004;21(9), 1035-1040.
43. Robertson L, Harrild K. Maternal and neonatal risk factors for childhood type 1 diabetes: a matched case-control study. *BMC public health*. 2010;10, 281.
44. Rosenbauer J, Herzig P, Kaiser P, Giani G. Early nutrition and risk of Type 1 diabetes mellitus--a nationwide case-control study in preschool children. *Experimental and clinical endocrinology & diabetes : official journal, German Society of Endocrinology [and] German Diabetes Association*. 2007;115(8), 502-508.
45. Sipetic SB, Vlajinac HD, Kocev NI, Marinkovic JM, Radmanovic SZ, Bjekic MD. The Belgrade childhood diabetes study: a multivariate analysis of risk determinants for diabetes. *European journal of public health*. 2005;15(2), 117-122.

46. Svensson J, Carstensen B, Mortensen HB, Borch-Johnsen K, Danish Study Group of Childhood D. Early childhood risk factors associated with type 1 diabetes--is gender important? *European journal of epidemiology*. 2005;20(5), 429-434.
47. Horta BL, Gigante DP, Nazmi A, Silveira VM, Oliveira I, Victora CG. Maternal smoking during pregnancy and risk factors for cardiovascular disease in adulthood. *Atherosclerosis*. 2011;219(2), 815-820.
48. Cupul-Uicab LA, Skjaerven R, Haug K, Melve KK, Engel SM, Longnecker MP. In utero exposure to maternal tobacco smoke and subsequent obesity, hypertension, and gestational diabetes among women in the MoBa cohort. *Environmental health perspectives*. 2012;120(3), 355-360.
49. Montgomery SM, Ekbohm A. Smoking during pregnancy and diabetes mellitus in a British longitudinal birth cohort. *Bmj*. 2002;324(7328), 26-27.
50. Power C, Atherton K, Thomas C. Maternal smoking in pregnancy, adult adiposity and other risk factors for cardiovascular disease. *Atherosclerosis*. 2010;211(2), 643-648.
51. Health, United States, 2013: with special feature on prescription drugs. (ed. Statistics NCfH), 2014: Hyattsville, Maryland.

Tables

Table 1- Distribution of parental, early-life, and adult characteristics by parental tobacco use status in 1,801 women [n (row %) or LSM (SE)].

	No parental tobacco	Maternal tobacco	Paternal tobacco	Parental tobacco
	606 (33.6)	116 (6.4)	619 (34.4)	460 (25.5)
Maternal				
Race/ethnicity				
African American	75 (26.4%)	13 (4.6%)	125 (44.0%)**	71 (25.0%)
White, Asian, Hispanic, other	531 (35.0%)	103 (6.8%)	494 (32.6%)	389 (25.6%)
BMI (kg/m ²)*	22.9 (0.2)	22.7 (0.3)	23.2 (0.2)	22.2 (0.2) [#]
Diabetes				
Never	518 (34.5%)	95 (6.3%)	506 (33.7%)	381 (25.4%)
Ever	88 (29.2%)	21 (7.0%)	113 (37.5%)	79 (26.2%)
Occupation				
Professional	97 (35.5%)	21 (7.7%)	104 (38.1%)	51 (18.7%) [¶]
Other	509 (33.3%)	95 (6.2%)	515 (33.7%)	409 (26.8%)
Paternal				
Race/ethnicity				
African American	78 (25.9%)	17 (5.6%)	131 (43.5%)**	75 (24.9%)
White, Asian, Hispanic, other	528 (35.2%)	99 (6.6%)	488 (32.5%)	385 (25.7%)
BMI (kg/m ²) [†]	24.3 (0.2)	24.5 (0.4)	24.4 (0.1)	24.5 (0.2)
Diabetes				
Never	492 (34.7%)	94 (6.6%)	480 (33.9%)	351 (24.8%)

Prenatal tobacco & offspring diabetes mellitus

Ever	114 (29.7%)	22 (5.7%)	139 (36.2%)	109 (28.4%) [¶]
Occupation				
Professional	343 (41.9%)	54 (6.6%)	256 (31.3%)	166 (20.3%)
Other	263 (26.8%)	62 (6.3%)	363 (37.0%)	294 (29.9%) [¶]
Daughters				
Gestational age (wks) [‡]	39.9 (0.1)	40.1 (0.2)	40.0 (0.1)	39.7 (0.1)
Birth weight (g)	3,350.9 (19.4)	3,149.3 (44.1) ^{**}	3,324.0 (19.3)	3,114.5 (22.4) ^{**}
Age (yrs)	48.7 (0.1)	49.2 (0.2) [¶]	48.8 (0.1)	49.2 (0.1) ^{**}
Tobacco smoking [§]				
Never	384 (37.5%)	69 (6.7%)	356 (34.7%) [¶]	216 (21.1%) ^{**}
Ever	221 (28.5%)	47 (6.1%)	262 (33.9%)	243 (31.4%)
BMI (kg/m ²)	26.7 (0.3)	27.7 (0.6)	27.7 (0.3) [#]	27.7 (0.3) [¶]
Hb A1C (%) [¶]	5.8 (0.1)	5.8 (0.2)	5.7 (0.1)	5.9 (0.1)
Hb A1C (mmol/mol) [¶]	39.9 (0.7)	39.9 (1.4)	38.8 (0.7)	41.0 (0.7)
Hb A1C [¶]				
Unmeasured	488 (34.1%)	91 (6.4%)	495 (34.6%)	357 (25.0%)
Measured	118 (31.9%)	25 (6.8%)	124 (33.5%)	103 (27.8%)
Type 2 diabetes				
Absent	589 (34.4%)	107 (6.2%) [¶]	590 (34.5%)	425 (24.8%) [#]
Present	17 (18.9%)	9 (10.0%)	29 (32.2%)	35 (38.9%)
Type 1 diabetes [¶] ,				
Absent	606 (33.8%)	115 (6.4%)	612 (34.2%)	459 (25.6%)
Present	0 (0%)	1 (11.1%)	7 (77.8%)	1 (11.1%)

*n=1,748; †n=1,208; ‡n=1,777; §n=1,798; ¶n=370.

Analysis of significant differences in least square means or counts were performed in PROC MIXED or PROC GENMOD (type 1 diabetes in PROC FREQ Fishers Exact), respectively where † $p < 0.05$, # $p < 0.01$, ** $p < 0.0001$ compared to no tobacco use during pregnancy.

Table 2- Diabetes mellitus cases (n=109) according to self-reported (ever vs. never, n=1,801) and clinically defined (A1C n=370) diabetes mellitus in the analysis population (n=1,801).

Self-reported type 1 diabetes	Self-reported type 2 diabetes	A1C categories	Diabetes Mellitus	Frequency	Percent
Never	Never	Unmeasured	Never	1,355	75.2
Never	Never	Normal	Never	197	10.9
Never	Never	Pre-diabetes	Never	140	7.8
Never	Never	Diabetes	Ever	10	0.6
Never	Ever	Unmeasured	Ever	69	3.8
Never	Ever	Normal	Ever	1	0.1
Never	Ever	Pre-diabetes	Ever	6	0.3
Never	Ever	Diabetes	Ever	14	0.8
Ever	Never	Unmeasured	Ever	7	0.4
Ever	Never	Normal	Ever	1	0.1
Ever	Never	Diabetes	Ever	1	0.1

Table 3-Association between parental tobacco use during gestation and diabetes mellitus in 1,801 women.

	No parental tobacco	Maternal tobacco	Paternal tobacco	Parental tobacco
No. diabetics	18	11	39	41
No. at risk	588	105	580	419
RR (95% CI)	1.0 (Reference)	3.2 (1.5-6.6)	2.1 (1.2-3.7)	3.0 (1.8-5.2)
<i>p-value</i>		<0.01	<0.01	<0.0001
aRR (95% CI) [*]	1.0 (Reference)	2.7 (1.3-5.4)	1.7 (1.0-3.0)	2.4 (1.4-4.1)
<i>p-value</i>		<0.01	0.05	<0.01
aRR (95% CI) [†]	1.0 (Reference)	2.6 (1.2-5.3)	1.7 (1.0-3.0)	2.4 (1.4-4.1)
<i>p-value</i>		<0.05	<0.05	<0.01
aRR (95% CI) [‡]	1.0 (Reference)	2.7 (1.4-5.3)	1.7 (1.0-2.8)	2.2 (1.3-3.7)
<i>p-value</i>		<0.01	0.06	<0.01

^{*}adjusted for parental African American race, parental diabetes, and parental professional employment.

[†]adjusted for parental African American race, parental diabetes, parental professional employment, and birth weight categories.

[‡]adjusted for parental African American race, parental diabetes, parental professional employment, and index case BMI categories.

Figure

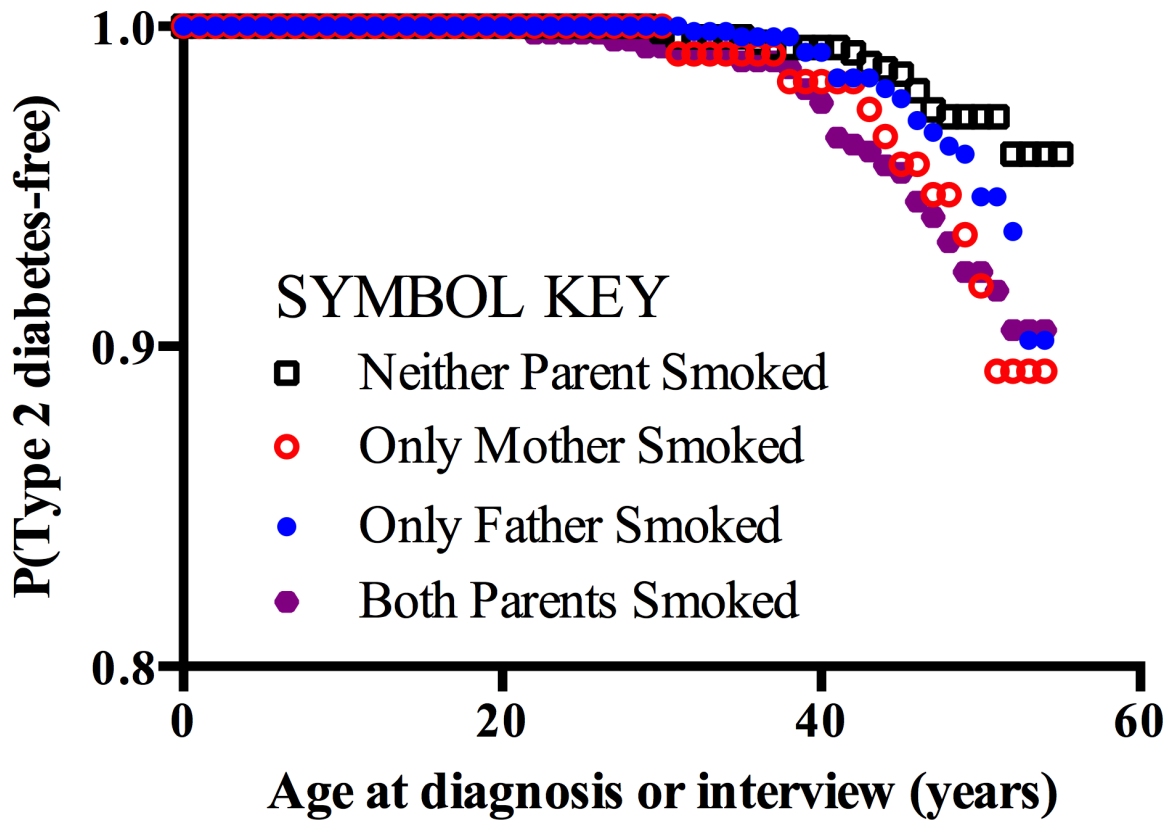


Figure 1. Probability of reporting physician diagnosed type 2 diabetes as a function of age and parental tobacco smoking during gestation.