

UC Riverside

UC Riverside Previously Published Works

Title

Non-uniform evolutionary response of gecko eye size to changes in diel activity patterns.

Permalink

<https://escholarship.org/uc/item/3f87v2gg>

Journal

Biology Letters, 14(5)

Authors

Schmitz, Lars
Higham, Timothy

Publication Date

2018-05-01

DOI

10.1098/rsbl.2018.0064

Copyright Information

This work is made available under the terms of a Creative Commons Attribution License, available at <https://creativecommons.org/licenses/by/4.0/>

Peer reviewed

Research



Cite this article: Schmitz L, Higham TE. 2018 Non-uniform evolutionary response of gecko eye size to changes in diel activity patterns. *Biol. Lett.* **14**: 20180064. <http://dx.doi.org/10.1098/rsbl.2018.0064>

Received: 30 January 2018
Accepted: 27 April 2018

Subject Areas:
evolution

Keywords:
geckos, eye size, vision, adaptive evolution, diel activity pattern, habitat clutter

Author for correspondence:
Lars Schmitz
e-mail: lschmitz@kecksci.claremont.edu

Electronic supplementary material is available online at <https://dx.doi.org/10.6084/m9.figshare.c.4092536>.

Non-uniform evolutionary response of gecko eye size to changes in diel activity patterns

Lars Schmitz^{1,2} and Timothy E. Higham³

¹W. M. Keck Science Department, Claremont McKenna, Scripps, and Pitzer Colleges, Claremont, CA 91711, USA
²Dinosaur Institute, Natural History Museum of Los Angeles County, Los Angeles, CA 90007, USA
³Department of Evolution, Ecology, and Organismal Biology, University of California Riverside, Riverside, CA 92521, USA

LS, 0000-0003-0210-4383; TEH, 0000-0003-3538-6671

Geckos feature a large range of eye sizes, but what drives this phenotypic diversity is currently unknown. Earlier studies point towards diel activity patterns (DAPs) and locomotory mode, but phylogenetic comparative studies in support of the proposed adaptive mode of eye evolution are lacking. Here, we test the hypothesis of DAPs as the driver of eye size evolution with a dataset on 99 species of gecko. Results from phylogenetic generalized least-square analysis (PGLS) and multivariate model-fitting reveal smaller eyes in diurnal geckos consistent with different phenotypic optima. However, Bayesian analyses of selective regime shifts demonstrate that only two of nine transitions from nocturnal to diurnal activity are coupled with decreases in eye size, and two other regime shifts are not associated with DAP transitions. This non-uniform evolutionary response suggests that eye size is not the only functionally relevant variable. Evolutionary adaptations may therefore include different combinations of several traits (e.g. photoreceptors), all with the same functional outcome. Our results further demonstrate that DAP only partially explains eye size diversity in geckos. As open habitats favour the evolution of large eyes while obstructed habitats favour small eyes, the degree of habitat clutter emerges as another potential axis of eye diversification.

1. Introduction

One of the grand challenges in biology is to elucidate the origins of phenotypic diversity [1–4]. Integrative functional and evolutionary analyses can solve this challenge by connecting organismal shape and function with specific niche dimensions, with promise for identifying the mechanisms that drive morphological evolution [3]. Geckos are ideal for pursuing the quest for the origins of phenotypic diversity, as they are known to harbour many lineages, forms and functions, occupying habitats that build the centre stage for an unparalleled evolution of biodiversity within squamates [5].

Geckos feature a large range of eye sizes, both in absolute and relative terms [6,7]. Eye size affects both visual acuity and visual light sensitivity [8], but larger eyes come with higher metabolic cost [9]. Large eyes also reduce available space for jaw adductor muscles and may decrease skull stability [10]. Therefore, gecko eye size evolution is expected to be governed by an evolutionary trade-off between selective benefits of visual performance and the cost associated with larger eyes. This evolutionary trade-off unfolds in the context

of photic environments that are largely controlled by diel activity pattern (DAP).

The origin of geckos is nocturnal, but there are many independent evolutionary transitions to diurnal and cathemeral/crepuscular activity patterns [11], offering repeated opportunities to observe organism–environment coevolution. Given the disparate light levels during night and day, the phenotypic diversity of the gecko visual system is expected to be substantially influenced by DAP. While published data substantiate an association between nocturnal activity and large eyes [6,7], it is unknown if these eye size differences arise within evolutionary transitions between DAPs, as expected in an adaptive scenario. In addition, ground-dwelling geckos can also have large eyes [6,7], pointing towards a more complex adaptive landscape of eye size evolution in geckos than suggested by the nocturnal–diurnal axis.

We tested the hypothesis that DAPs are the main drivers of eye size evolution in geckos, and predicted that evolutionary transitions to diurnality are coupled with reduction of eye size, reflecting the evolutionary trade-off between visual performance and the metabolic and biomechanical cost. Surprisingly, our phylogenetic perspective reveals that the morphological response to independent evolutionary DAP transitions is not uniform.

2. Material and methods summary

We used data on anteroposterior eye diameter (ED) and snout-vent-length (SVL) for 99 gecko species, representing a mix of the literature data ($n = 37$) and new data collections on museum specimens ($n = 62$; 1–12 individuals/species), and compiled information on DAP (electronic supplementary material). Comparative analyses were performed on species averages in a phylogenetic context [12] using R v. 3.4.4 [13]. We reconstructed the evolutionary history of DAP with stochastic character mapping in phytools [14]. Eye size disparity between species with different DAPs was assessed by phylogenetic generalized least-square analysis (PGLS) [15], and multivariate model-fitting [16] provided insights regarding whether a model with independent adaptive peaks for each DAP fitted the data better than a single-peak model. To investigate the adaptive landscape of residual eye size (calculated from PGLS) in more detail, we adopted the Bayesian implementation of the Ornstein–Uhlenbeck model of trait evolution (bayou, [17]), an agnostic approach to identify selective regime shifts over a phylogeny (see the electronic supplementary material).

3. Results and discussion

Stochastic character mapping of DAPs confirms a nocturnal origin of geckos with several independent transitions to diurnal and cathemeral/crepuscular activity (figure 1a; [12]). Our dataset of 99 gecko species contains evidence for nine independent transitions to diurnality (D1–8), four transitions to cathemeral/crepuscular behaviour (C1–4) and two transitions from diurnal to nocturnal activity (N1–2). Two of the diurnal transitions represent deep radiations: *Sphaerodactylus/Gonatodes* (D4, 95.7 Myr) and *Phelsuma/Lygodactylus* (D7, 90.3 Myr). The *Naultinus* clade represents a younger transition (D2, 6.3 Myr). All other transitions are represented by single lineages.

Diurnal geckos have smaller eyes for given SVL than other geckos. PGLS results support that the eyes of geckos with different DAPs scale with negative allometry (0.87; similar to other vertebrates [18]), but have different intercepts. The PGLS model with DAP as treatment ($ED \sim SVL + DAP$) received stronger support than the model without treatment ($ED \sim SVL$, $\Delta AICc = 15.9$). Multivariate model-fitting suggests that these different intercepts are consistent with different phenotypic optima (mean $\Delta AICc = 23.2$, averaged over 1000 stochastic character maps). However, there is overlap in eye size between DAP groups, congruent with findings in other vertebrates [19–21].

We explored this overlap by an approach dictated by independent evolutionary transitions between DAPs. First, we calculated the residuals of all species from a simple PGLS model (eye size \sim SVL) and then binned residuals according to DAP transitions (figure 1c). All diurnal bins contain smaller residual eye size than expected, except for *Pristurus carteri* (D3). All four cathemeral/crepuscular lineages feature relatively large eyes, whereas the tertiary nocturnal lineages have small residual eye size, similar to their diurnal relatives, D4. Ancestrally nocturnal geckos (ANC) have large residual eye sizes, but there is overlap with diurnal bins. The overlap suggests that DAP is not the only driver of eye size evolution, and/or gecko eyes follow different evolutionary trajectories in adapting to different light levels.

The pattern of different evolutionary trajectories is reinforced by the analysis of the adaptive landscape. Four strongly supported selective regime shifts emerged, and while two of these shifts are congruent with our prediction, the other two are surprising. Geckos enter regimes selecting smaller eyes at D2 (*Naultinus*) and D4 (*Sphaerodactylus/Gonatodes*), but none of the other transitions to diurnality are characterized by a change in selection for smaller eyes. However, an additional shift towards smaller eyes falls on the branch leading to *Lepidoblepharis*, the taxon with the relatively smallest eyes in the data, nested within the *Sphaerodactylus/Gonatodes* clade. The fourth strongly supported regime shift is most surprising, situated within a radiation of nocturnal geckos, at the branch leading to the Palearctic naked-toe geckos. These geckos enter a regime that favours the evolution of even larger eyes than those of their immediate relatives (figure 1b,c). Our results, therefore, reveal a non-uniform evolutionary response in iterated DAP transitions and also suggest that DAP alone is insufficient to fully explain eye size evolution in geckos.

What other factors determine the adaptive landscape of gecko eye size evolution? Locomotory mode may influence eye size, with ground-dwelling species having larger eyes than climbing species [6,7]. However, the geckos with some of the largest (Palearctic naked-toe geckos) and smallest (*Lepidoblepharis*) eye size in our data are ground-dwelling, and the mechanistic link between locomotor mode and visual performance is not well documented [6], especially given that many geckos both run and climb [22].

We propose that habitat clutter is an additional important environmental factor that impacts eye evolution. Palearctic naked-toe geckos occupy (semi-)arid habitats with little vegetation cover, providing an unobstructed, long-range view, whereas *Lepidoblepharis* is active in leaf-litter on the ground [22], with obstructed vision and short viewing distances. Optical modelling has shown that large eyes enable larger visual ranges in both diurnal and nocturnal settings [23], hence larger eyes can

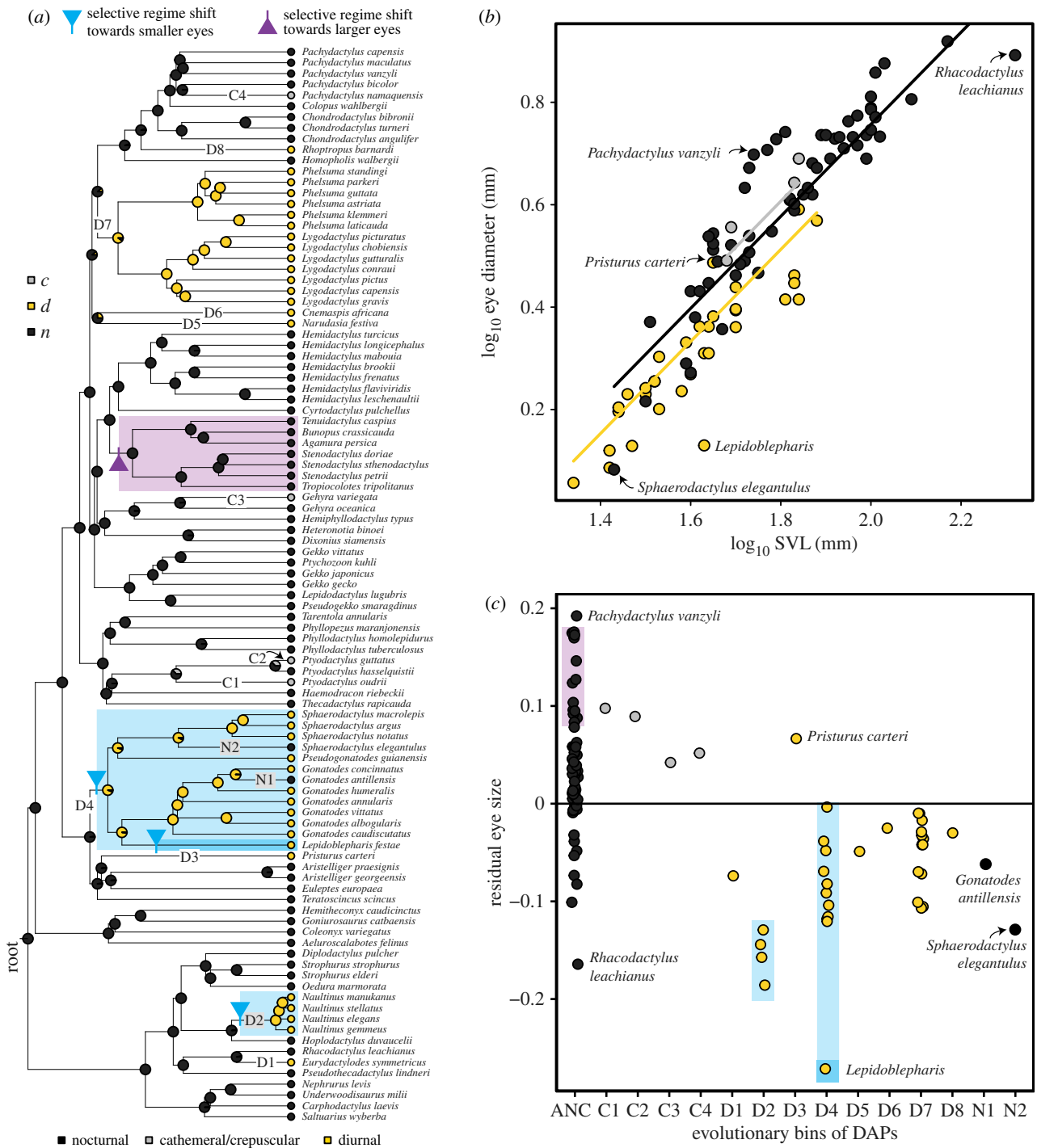


Figure 1. (a) Evolution of DAP in geckos, summarized from 1000 iterations of stochastic character mapping, and bayou-identified selective regime shifts for size-corrected ED. Blue identifies clades with a shift towards selection of smaller residual eye size, while purple identifies shifts towards larger residual eye size. D1–8 refer to individual evolutionary transitions to diurnal activity, C1–4 are transitions to cathemeral/crepuscular activity and N1–2 identify shifts from diurnal to nocturnal. (b) Plot of \log_{10} -transformed ED against \log_{10} -transformed SVL, with fitted lines from a PGLS model with DAP as treatment. The different intercepts are consistent with different phenotypic optima. Diurnal species tend to have small eyes, a pattern also visible in (c), where residual eye size is ordered according to evolutionary bins of DAP. ANC, ancestrally nocturnal geckos.

provide a selective benefit by extending the target detection distance when emerging from a cluttered to an open habitat. Accordingly, Palearctic naked-toe geckos, released from the constraints of obstructed habitats, may have evolved larger eyes with longer visual ranges. The reverse evolutionary transition, from uncluttered to obstructed habitats, likely results in selection against large eyes, which we may see in *Lepidoblepharis*, where leaf-litter constrains visual range. Precise habitat clutter data for geckos are unavailable, hence a formal test of this hypothesis is still wanted, but it is possible that the ground-dwelling/climbing axis of eye diversity [6] is related to habitat

clutter, as ground-dwelling specialists tend to be more common in open habitats [22]. We propose that habitat and DAP jointly drive visual range, locomotor speed [24,25], and, ultimately, eye size evolution, offering a new perspective on Leuckart's Law [26]. However, even with full understanding of the photic environment, eye size can follow different evolutionary trajectories, as size is not the only determinant of visual performance. Eyes represent a many-to-one mapping system of structure to function [3], and future studies should integrate across different traits, including optics and retina structures.

Ethics. All measurements were taken on preserved specimens (LA County Museum of Natural History, LACM; Zoologisches Forschungsmuseum Alexander Koenig, ZFMK).

Data accessibility. All data and code are available on the Dryad Digital Repository: <http://dx.doi.org/10.5061/dryad.96qr7n2> [27].

Authors' contributions. L.S. and T.E.H. developed hypotheses and wrote the paper; T.E.H. collected data; L.S. performed analyses and

designed the figures. Both authors approved the final version and agree to be accountable for all aspects of the work.

Competing interests. We declare we have no competing interests.

Funding. T.E.H. was supported by NSF-IOS-1147043.

Acknowledgements. Emily Naylor and Vicky Zhuang (UCR) provided measurements. Staff at the ZFMK and Greg Pauly (LACM) enabled collection access.

References

1. Vermeij GJ. 1973 Biological versatility and earth history. *Proc. Natl Acad. Sci. USA* **70**, 1936–1938.
2. Foote M. 1997 The evolution of morphological diversity. *Annu. Rev. Ecol. Syst.* **28**, 129–152. (doi:10.1146/annurev.ecolsys.28.1.129)
3. Wainwright PC. 2007 Functional versus morphological diversity in macroevolution. *Annu. Rev. Ecol. Syst.* **38**, 381–401. (doi:10.1146/annurev.ecolsys.38.091206.095706)
4. Stayton CT. 2015 The definition, recognition, and interpretation of convergent evolution, and two new measures for quantifying and assessing the significance of convergence. *Evolution* **69**, 2140–2153. (doi:10.1111/evo.12729)
5. Uetz P, Freed P, Hošek J (eds). 2018 The Reptile Database. See <http://www.reptiledatabase.org> (accessed 15 January 2018).
6. Werner YL. 1969 Eye size in geckos of various ecological types (Reptilia: Gekkonidae and Sphaerodactylidae). *Isr. J. Zool.* **18**, 291–316.
7. Werner YL, Seifan T. 2006 Eye size in geckos: asymmetry, allometry, sexual dimorphism, and behavioral correlates. *J. Morphol.* **267**, 1486–1500. (doi:10.1002/jmor.10499)
8. Land MF, Nilsson DE. 2012 *Animal eyes*. 2nd edn. Oxford, UK: Oxford University Press.
9. Niven JE, Laughlin SB. 2008 Energy limitation as a selective pressure on the evolution of sensory systems. *J. Exp. Biol.* **211**, 1792–1804. (doi:10.1242/jeb.017574)
10. Herrel A, Schaerlaeken V, Meyers JJ, Metzger KA, Ross CF. 2007 The evolution of cranial design and performance in squamates: consequences of skull-bone reduction on feeding behavior. *Integr. Comp. Biol.* **47**, 107–117. (doi:10.1093/icb/pcm014)
11. Gamble T, Greenbaum E, Jackman TR, Bauer AM. 2015 Into the light: diurnality has evolved multiple times in geckos. *Biol. J. Linn. Soc.* **115**, 896–910. (doi:10.1111/bij.12536)
12. Zheng Y, Wiens JJ. 2016 Combining phylogenomic and supermatrix approaches, and a time-calibrated phylogeny for squamate reptiles (lizards and snakes) based on 52 genes and 4162 species. *Mol. Phylogenet. Evol.* **94**, 537–547. (doi:10.1016/j.ympev.2015.10.009)
13. R Core Team. 2017. *R: a language and environment for statistical computing*. Vienna, Austria: R Foundation for Statistical Computing. See <https://www.R-project.org/>.
14. Revell LJ. 2011 phytools: an R package for phylogenetic comparative biology (and other things). *Methods Ecol. Evol.* **3**, 217–223. (doi:10.1111/j.2041-210x.2011.00169.x)
15. Symonds MRE, Blomberg SP. 2014 A primer on phylogenetic generalised least squares. In *Modern phylogenetic comparative methods and their application in evolutionary biology* (ed. LZ Garamszegi), pp. 105–130. Berlin, Germany: Springer.
16. Clavel J, Escarguel G, Merceron G. 2015 mvmorph: an R package for fitting multivariate evolutionary models to morphometric data. *Methods Ecol. Evol.* **6**, 1311–1319. (doi:10.1111/2041-210x.12420)
17. Uyeda JC, Harmon LJ. 2014 A novel Bayesian method for inferring and interpreting the dynamics of adaptive landscapes from phylogenetic comparative data. *Syst. Biol.* **63**, 902–918. (doi:10.1093/sysbio/syu057)
18. Howland HC, Merola S, Basarab JR. 2004 The allometry and scaling of the size of vertebrate eyes. *Vision Res.* **44**, 2043–2065. (doi:10.1016/j.visres.2004.03.023)
19. Hall MI, Ross CF. 2006 Eye shape and activity pattern in birds. *J. Zool.* **271**, 437–444. (doi:10.1111/j.1469-7998.2006.00227.x)
20. Ross CF, Kirk EC. 2007 Evolution of eye size and shape in primates. *J. Hum. Evol.* **52**, 294–313. (doi:10.1016/j.jhevol.2006.09.006)
21. Schmitz L, Wainwright PC. 2011 Nocturnality constrains morphological and functional diversity in the eyes of reef fishes. *BMC Evol. Biol.* **11**, 338. (doi:10.1186/1471-2148-11-338)
22. IUCN 2017. IUCN Red List of Threatened Species. Version 2017.3. www.iucnredlist.org. Downloaded on 21 January 2018.
23. Madver MA, Schmitz L, Mugan U, Murphey TD, Mobley CD. 2017 Massive increase in visual range preceded the origin of terrestrial vertebrates. *Proc. Natl Acad. Sci. USA* **114**, E2375–E2384. (doi:10.1073/pnas.1615563114)
24. Birn-Jeffery AV, Higham TE. 2016 Light level impacts locomotor biomechanics in a secondarily diurnal gecko, *Rhoptropus afer*. *J. Exp. Biol.* **219**, 3649–3655. (doi:10.1242/jeb.143719)
25. Vanhooydonck B, Van Damme R. 2003 Relationships between locomotor performance, microhabitat use and antipredator behaviour in lacertid lizards. *Funct. Ecol.* **17**, 160–169. (doi:10.1046/j.1365-2435.2003.00716.x)
26. Heard-Booth AN, Kirk EC. 2012 The influence of maximum running speed on eye size: a test of Leuckart's Law in mammals. *Anat. Rec. Adv. Integr. Anat. Evol. Biol.* **295**, 1053–1062. (doi:10.1002/ar.22480)
27. Schmitz L, Higham TE. 2018 Data from: Non-uniform evolutionary response of gecko eye size to changes in diel activity patterns. Dryad Digital Repository. (doi:10.5061/dryad.96qr7n2)