

# UC Irvine

## UC Irvine Previously Published Works

### Title

Kidney Health For Everyone Everywhere -From Prevention To Detection And Equitable Access To Care.

### Permalink

<https://escholarship.org/uc/item/3d03x9w1>

### Journal

Brunei International Medical Journal, 2020(16)

### ISSN

1560-5876

### Authors

Li, PKT  
Garcia-Garcia, G  
Lui, SF  
[et al.](#)

### Publication Date

2020

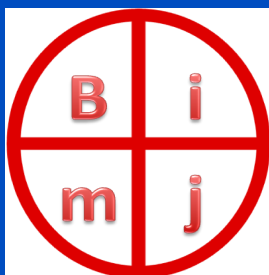
### Supplemental Material

<https://escholarship.org/uc/item/3d03x9w1#supplemental>

### Copyright Information

This work is made available under the terms of a Creative Commons Attribution License, available at <https://creativecommons.org/licenses/by/4.0/>

Peer reviewed



OFFICIAL PUBLICATION OF  
THE MINISTRY OF HEALTH,  
BRUNEI DARUSSALAM

# Brunei International Medical Journal

Volume 16

26 May 2020 (3 Syawal 1441H )

## KIDNEY HEALTH FOR EVERYONE EVERYWHERE - FROM PREVENTION TO DETECTION AND EQUITABLE ACCESS TO CARE.



Philip Kam-Tao LI<sup>1</sup>, Guillermo GARCIA-GARCIA<sup>2</sup>, Siu-Fai LUI<sup>3</sup>, Sharon ANDREOLI<sup>4</sup>, Winston Wing-Shing FUNG<sup>1</sup>, Anne HRADSKY<sup>5</sup>, Latha KUMARASWAMI<sup>6</sup>, Vassilios LIAKOPOULOS<sup>7</sup>, Ziyoda RAKHIMOVA<sup>5</sup>, Gamal SAADI<sup>8</sup>, Luisa STRANI<sup>5</sup>, Ifeoma ULASI<sup>9</sup>, and Kamyar Kalantar-Zadeh<sup>10</sup> (World Kidney Day Steering Committee).

### ABSTRACT

The global burden of chronic kidney disease (CKD) is rapidly increasing with a projection of becoming the 5th most common cause of years of life lost globally by 2040. Aggravatingly, CKD is a major cause of catastrophic health expenditure. The costs of dialysis and transplantation consume up to 3% of the annual healthcare budget in high-income countries. Crucially, however, the onset and progression of CKD is often preventable. In 2020, the World Kidney Day campaign highlights the importance of preventive interventions – be it primary, secondary or tertiary. This complementing article focuses on outlining and analyzing measures that can be implemented in every country to promote and advance CKD prevention. Primary prevention of kidney disease should focus on the modification of risk factors and addressing structural abnormalities of the kidney and urinary tracts, as well as exposure to environmental risk factors and nephrotoxins. In persons with pre-existing kidney disease, secondary prevention, including blood pressure optimization and glycemic control, should be the main goal of education and clinical interventions. In patients with advanced CKD, management of co-morbidities such as uremia and cardiovascular disease is a highly recommended preventative intervention to avoid or delay dialysis or kidney transplantation. Political efforts are needed to proliferate the preventive approach. While national policies and strategies for non-communicable diseases might be present in a country, specific policies directed toward education and awareness about CKD screening, management and treatment are often lacking. Hence, there is an urgent need to increase the awareness of the importance of preventive measures throughout populations, professionals and policy makers.

**Keywords:** Awareness, Access to care, Detection, Kidney diseases, Prevention, Sustainable.

*Brunei Int Med J. 2020;16:60-72*

ISSN 1560 5876 Print  
ISSN 2079 3146 Online

Online version of the journal is available at [www.bimjonline.com](http://www.bimjonline.com)

# Brunei International Medical Journal (BIMJ) Official Publication of the Ministry of Health, Brunei Darussalam

## EDITORIAL BOARD

<b>Editor-in-Chief</b>	William Chee Fui CHONG
<b>Sub-Editors</b>	Vui Heng CHONG Ketan PANDE
<b>Editorial Board Members</b>	Nazar LUQMAN Muhd Syafiq ABDULLAH Alice Moi Ling YONG Ahmad Yazid ABDUL WAHAB Jackson Chee Seng TAN Dipo OLABUMUYI Pemasiri Upali TELISINGHE Roselina YAAKUB Pengiran Khairol Asmee PENGIRAN SABTU Dayangku Siti Nur Ashikin PENGIRAN TENGAH

## INTERNATIONAL EDITORIAL BOARD MEMBERS

Lawrence HO Khek Yu (Singapore)	Surinderpal S BIRRING (United Kingdom)
Emily Felicia Jan Ee SHEN (Singapore)	Leslie GOH (United Kingdom)
John YAP (United Kingdom)	Chuen Neng LEE (Singapore)
Christopher HAYWARD (Australia)	Jimmy SO (Singapore)
Jose F LAPENA (Philippines)	Simon Peter FROSTICK (United Kingdom)

### Advisor

Wilfred PEH (Singapore)

### Past Editors

Nagamuttu RAVINDRANATHAN  
Kenneth Yuh Yen KOK

### Proof reader

John WOLSTENHOLME (CfBT Brunei Darussalam)

## Aim and Scope of Brunei International Medical Journal

The Brunei International Medical Journal (BIMJ) is a six monthly peer reviewed official publication of the Ministry of Health under the auspices of the Clinical Research Unit, Ministry of Health, Brunei Darussalam.

The BIMJ publishes articles ranging from original research papers, review articles, medical practice papers, special reports, audits, case reports, images of interest, education and technical/innovation papers, editorials, commentaries and letters to the Editor. Topics of interest include all subjects that relate to clinical practice and research in all branches of medicine, basic and clinical including topics related to allied health care fields. The BIMJ welcomes manuscripts from contributors, but usually solicits reviews articles and special reports. Proposals for review papers can be sent to the Managing Editor directly. Please refer to the contact information of the Editorial Office.

### Instruction to authors

#### Manuscript submissions

All manuscripts should be sent to the Managing Editor, BIMJ, Ministry of Health, Brunei Darussalam; e-mail: editor-in-chief@bimjonline.com. Subsequent correspondence between the BIMJ and authors will, as far as possible via should be conducted via email quoting the reference number.

#### Conditions

Submission of an article for consideration for publication implies the transfer of the copyright from the authors to the BIMJ upon acceptance. The final decision of acceptance rests with the Editor-in-Chief. All accepted papers become the permanent property of the BIMJ and may not be published elsewhere without written permission from the BIMJ.

#### Ethics

Ethical considerations will be taken into account in the assessment of papers that have experimental investigations of human or animal subjects. Authors should state clearly in the Materials and Methods section of the manuscript that institutional review board has approved the project. Those investigators without such review boards should ensure that the principles outlined in the Declaration of Helsinki have been followed.

### Manuscript categories

#### Original articles

These include controlled trials, interventional studies, studies of screening and diagnostic tests, outcome studies, cost-effectiveness analyses, and large-scale epidemiological studies. Manuscript should include the following; introduction, materials and methods, results and conclusion. The objective should be stated clearly in the introduction. The text should not exceed 2500 words and references not more than 30.

#### Review articles

These are, in general, invited papers, but unsolicited reviews, if of good quality, may be considered. Reviews are systematic critical assessments of

literature and data sources pertaining to clinical topics, emphasising factors such as cause, diagnosis, prognosis, therapy, or prevention. Reviews should be made relevant to our local setting and preferably supported by local data. The text should not exceed 3000 words and references not more than 40.

#### Special Reports

This section usually consist of invited reports that have significant impact on healthcare practice and usually cover disease outbreaks, management guidelines or policy statement paper.

#### Audits

Audits of relevant topics generally follow the same format as original article and the text should not exceed 1,500 words and references not more than 20.

#### Case reports

Case reports should highlight interesting rare cases or provide good learning points. The text should not exceed 1000 words; the number of tables, figures, or both should not be more than two, and references should not be more than 15.

#### Education section

This section includes papers (i.e. how to interpret ECG or chest radiography) with particular aim of broadening knowledge or serve as revision materials. Papers will usually be invited but well written paper on relevant topics may be accepted. The text should not exceed 1500 words and should include not more than 15 figures illustration and references should not be more than 15.

#### Images of interest

These are papers presenting unique clinical encounters that are illustrated by photographs, radiographs, or other figures. Image of interest should include a brief description of the case and discussion with educational aspects. Alternatively, a mini quiz can be presented and answers will be posted in a different section of the publication. A maximum of

three relevant references should be included. Only images of high quality (at least 300dpi) will be acceptable.

#### **Technical innovations**

This section include papers looking at novel or new techniques that have been developed or introduced to the local setting. The text should not exceed 1000 words and should include not more than 10 figures illustration and references should not be more than 10.

#### **Letters to the Editor**

Letters discussing a recent article published in the BIMJ are welcome and should be sent to the Editorial Office by e-mail. The text should not exceed 250 words; have no more than one figure or table, and five references.

#### **Criteria for manuscripts**

Manuscripts submitted to the BIMJ should meet the following criteria: the content is original; the writing is clear; the study methods are appropriate; the data are valid; the conclusions are reasonable and supported by the data; the information is important; and the topic has general medical interest. Manuscripts will be accepted only if both their contents and style meet the standards required by the BIMJ.

#### **Authorship information**

Designate one corresponding author and provide a complete address, telephone and fax numbers, and e-mail address. The number of authors of each paper should not be more than twelve; a greater number requires justification. Authors may add a publishable footnote explaining order of authorship.

#### **Group authorship**

If authorship is attributed to a group (either solely or in addition to one or more individual authors), all members of the group must meet the full criteria and requirements for authorship described in the following paragraphs. One or more authors may take responsibility 'for' a group, in which case the other group members are not authors, but may be listed in an acknowledgement.

#### **Authorship requirement**

When the BIMJ accepts a paper for publication, authors will be asked to sign statements on (1) financial disclosure, (2) conflict of interest and (3) copyright transfer. The correspondence author may sign on behalf of co-authors.

#### **Authorship criteria and responsibility**

All authors must meet the following criteria: to have participated sufficiently in the work to take public responsibility for the content; to have made substantial contributions to the conception and de-

sign, and the analysis and interpretation of the data (where applicable); to have made substantial contributions to the writing or revision of the manuscript; and to have reviewed the final version of the submitted manuscript and approved it for publication. Authors will be asked to certify that their contribution represents valid work and that neither the manuscript nor one with substantially similar content under their authorship has been published or is being considered for publication elsewhere, except as described in an attachment. If requested, authors shall provide the data on which the manuscript is based for examination by the editors or their assignees.

#### **Financial disclosure or conflict of interest**

Any affiliation with or involvement in any organisation or entity with a direct financial interest in the subject matter or materials discussed in the manuscript should be disclosed in an attachment. Any financial or material support should be identified in the manuscript.

#### **Copyright transfer**

In consideration of the action of the BIMJ in reviewing and editing a submission, the author/s will transfer, assign, or otherwise convey all copyright ownership to the Clinical Research Unit, RIPAS Hospital, Ministry of Health in the event that such work is published by the BIMJ.

#### **Acknowledgements**

Only persons who have made substantial contributions but who do not fulfill the authorship criteria should be acknowledged.

#### **Accepted manuscripts**

Authors will be informed of acceptances and accepted manuscripts will be sent for copyediting. During copyediting, there may be some changes made to accommodate the style of journal format. Attempts will be made to ensure that the overall meaning of the texts are not altered. Authors will be informed by email of the estimated time of publication. Authors may be requested to provide raw data, especially those presented in graph such as bar charts or figures so that presentations can be constructed following the format and style of the journal. Proofs will be sent to authors to check for any mistakes made during copyediting. Authors are usually given 72 hours to return the proof. No response will be taken as no further corrections required. Corrections should be kept to a minimum. Otherwise, it may cause delay in publication.

#### **Offprint**

Contributors will not be given any offprint of their published articles. Contributors can obtain an electronic reprint from the journal website.

## **DISCLAIMER**

All articles published, including editorials and letters, represent the opinion of the contributors and do not reflect the official view or policy of the Clinical Research Unit, the Ministry of Health or the institutions with which the contributors are affiliated to unless this is clearly stated. The appearance of advertisement does not necessarily constitute endorsement by the Clinical Research Unit or Ministry of Health, Brunei Darussalam. Furthermore, the publisher cannot accept responsibility for the correctness or accuracy of the advertisers' text and/or claim or any opinion expressed.

# KIDNEY HEALTH FOR EVERYONE EVERYWHERE - FROM PREVENTION TO DETECTION AND EQUITABLE ACCESS TO CARE.



Philip Kam-Tao LI<sup>1</sup>, Guillermo GARCIA-GARCIA<sup>2</sup>, Siu-Fai LUI<sup>3</sup>, Sharon ANDREOLI<sup>4</sup>, Winston Wing-Shing FUNG<sup>1</sup>, Anne HRADSKY<sup>5</sup>, Latha KUMARASWAMI<sup>6</sup>, Vassilios LIAKOPOULOS<sup>7</sup>, Ziyoda RAKHIMOVA<sup>5</sup>, Gamal SAADI<sup>8</sup>, Luisa STRANI<sup>5</sup>, Ifeoma ULASI<sup>9</sup>, and Kamyar Kalantar-Zadeh<sup>10</sup> (World Kidney Day Steering Committee).

<sup>1</sup>Department of Medicine and Therapeutics, Carol & Richard Yu PD Research Centre, Prince of Wales Hospital, Chinese University of Hong Kong, Hong Kong.

<sup>2</sup>Nephrology Service, Hospital Civil de Guadalajara Fray Antonio Alcalde, University of Guadalajara Health Sciences Center, Guadalajara, Jal., Mexico.

<sup>3</sup>Division of Health System, Policy and Management, Jockey Club School of Public Health and Primary Care, The Chinese University of Hong Kong, Hong Kong.

<sup>4</sup>James Whitcomb Riley Hospital for Children, Indiana University School Of Medicine, Indianapolis, USA.

<sup>5</sup>World Kidney Day Office, Avenue des Arts 1-2, 6th floor, B-1210, Brussels, Belgium.

<sup>6</sup>Tanker Foundation, Chennai, India.

<sup>7</sup>Division of Nephrology and Hypertension, 1st Department of Internal Medicine, AHEPA Hospital, Aristotle University of Thessaloniki, Thessaloniki, Greece.

<sup>8</sup>Nephrology Unit, Department of Internal Medicine, Faculty of Medicine, Cairo University, Giza, Egypt.

<sup>9</sup>Renal Unit, Department of Medicine, College of Medicine, University of Nigeria, Ituku-Ozalla, Enugu, Nigeria.

<sup>10</sup>Division of Nephrology and Hypertension and Kidney Transplantation, University of California Irvine School of Medicine, Orange, CA, USA.

## ABSTRACT

The global burden of chronic kidney disease (CKD) is rapidly increasing with a projection of becoming the 5th most common cause of years of life lost globally by 2040. Aggravatingly, CKD is a major cause of catastrophic health expenditure. The costs of dialysis and transplantation consume up to 3% of the annual healthcare budget in high-income countries. Crucially, however, the onset and progression of CKD is often preventable. In 2020, the World Kidney Day campaign highlights the importance of preventive interventions – be it primary, secondary or tertiary. This complementing article focuses on outlining and analyzing measures that can be implemented in every country to promote and advance CKD prevention. Primary prevention of kidney disease should focus on the modification of risk factors and addressing structural abnormalities of the kidney and urinary tracts, as well as exposure to environmental risk factors and nephrotoxins. In persons with pre-existing kidney disease, secondary prevention, including blood pressure optimization and glycemic control, should be the main goal of education and clinical interventions. In patients with advanced CKD, management of co-morbidities such as uremia and cardiovascular disease is a highly recommended preventative intervention to avoid or delay dialysis or kidney transplantation. Political efforts are needed to proliferate the preventive approach. While national policies and strategies for non-communicable diseases might be present in a country, specific

**Correspondence author: Philip Kam-Tao Li, MD FRCP FACP**, Department of Medicine and Therapeutics, Prince of Wales Hospital, Chinese University of Hong Kong, 30–32 Ngan Shing Street, Shatin, New Territories, Hong Kong, China . Email: [philipli@cuhk.edu.hk](mailto:philipli@cuhk.edu.hk) and **Kamyar Kalantar-Zadeh, MD, MPH, PhD**, Division of Nephrology, Hypertension and Kidney Transplantation, University of California Irvine School of Medicine, Orange, California, USA. Tel: (714) 456-514,2 Fax : (714) 456-6034. Email: [kkz@uci.edu](mailto:kkz@uci.edu)

policies directed toward education and awareness about CKD screening, management and treatment are often lacking. Hence, there is an urgent need to increase the awareness of the importance of preventive measures throughout populations, professionals and policy makers.

**Keywords: Awareness, Access to care, Detection, Kidney diseases, Prevention, Sustainable.**

### ABBREVIATION LIST

ACEI	Angiotensin converting enzyme inhibitor
ADPKD	Autosomal Dominant Polycystic Kidney Disease
AIN	Acute interstitial nephritis
AKI	Acute kidney injury
APOL1	Apolipoprotein 1
ATN	Acute tubular necrosis
BPH	Benign prostate hypertrophy
CKD	Chronic kidney disease
CKDu	Chronic kidney disease of unknown cause
CNI	Calcineurin inhibitor
CVD	Cardiovascular disease
ESRD	End-stage renal disease
GFR	Glomerular filtration rate
GN	Glomerulonephritis
ISN	International Society of Nephrology
KDIGO	Kidney Disease Improving Global Outcomes
LMIC	Low middle income countries
MDC	Multidisciplinary Clinic
NASH	Non-alcoholic steatohepatitis
NCD	Non-communicable disease
NHSP	National Health Screening Program
NICE	National Institute of Clinical Excellence
NSAID	Non-steroidal anti-inflammatory drugs
PEW	Protein energy wasting
PPI	Proton pump inhibitor
RAASi	Renin-angiotensin-aldosterone system inhibitors
SDG	Sustainable Development Goal
SDPI	Special Diabetes Program for Indians
SGLT2i	Sodium-glucose cotransporter-2 Inhibitors
UHC	Universal Health Coverage
UN	United Nation
WHO	World Health Organization

### INTRODUCTION

Around 850 million people currently are affected by different types of kidney disorders.<sup>1</sup> Up to one in ten adults worldwide has chronic

kidney disease (CKD), which is invariably irreversible and mostly progressive. The global burden of CKD is increasing, and CKD is projected to become the 5<sup>th</sup> most common cause of years of life lost globally by 2040.<sup>2</sup> If CKD remains uncontrolled and if the affected person survives the ravages of cardiovascular and other complications of the disease, CKD progresses to end-stage renal disease (ESRD), where life cannot be sustained without dialysis therapy or kidney transplantation. Hence, CKD is a major cause of catastrophic health expenditure.<sup>3</sup> The costs of dialysis and transplantation consume 2–3% of the annual health-care budget in high-income countries; spent on less than 0.03% of the total population of these countries.<sup>4</sup>

Importantly, however, kidney disease can be prevented and progression to ESRD can be delayed with appropriate access to basic diagnostics and early treatment including life style modifications and nutritional interventions.<sup>4–8</sup> Despite this, access to effective and sustainable kidney care remains highly inequitable across the world, and kidney disease remains a low health priority in many countries. Kidney disease is crucially missing from the international agenda for global health. Notably absent from the impact indicators for the Sustainable Development Goal (SDG) Goal 3. Target 3.4: By 2030 (By 2030, reduce by one third premature mortality from non-communicable diseases (NCDs) through prevention and treatment and promote mental health and well-being) and the latest iteration of the United Nation (UN) Political Declaration on NCDs, kidney diseases urgently need to be given political attention, priority and consideration.<sup>9</sup> Current global political commitments on NCDs focus largely on four main diseases: cardiovascular disease (CVD), cancer, diabetes, and chronic respiratory diseases. Yet, it is estimated that 55% of the global NCD burden is attributed to diseases outside of this group.<sup>10</sup> Furthermore, kidney disease frequently co-exists with the ‘big’

four NCDs, which leads to worse health outcomes. CKD is a major risk factor for heart disease and cardiac death, as well as for infections such as tuberculosis, and is a major complication of other preventable and treatable conditions including diabetes, hypertension, HIV and hepatitis.<sup>4-7</sup> As the Sustainable Development Goals (SDG) and Universal Health Coverage (UHC) agendas progress and provide a platform for raising awareness of NCD health care and monitoring needs, targeted action on kidney disease prevention should become integral to the global policy response.<sup>1</sup> The global kidney health community calls for the recognition of kidney disease and effective identification and management of its risk factors as a key contributor to the global NCD burden and the implementation of an integrated and people’s centered approach to care.

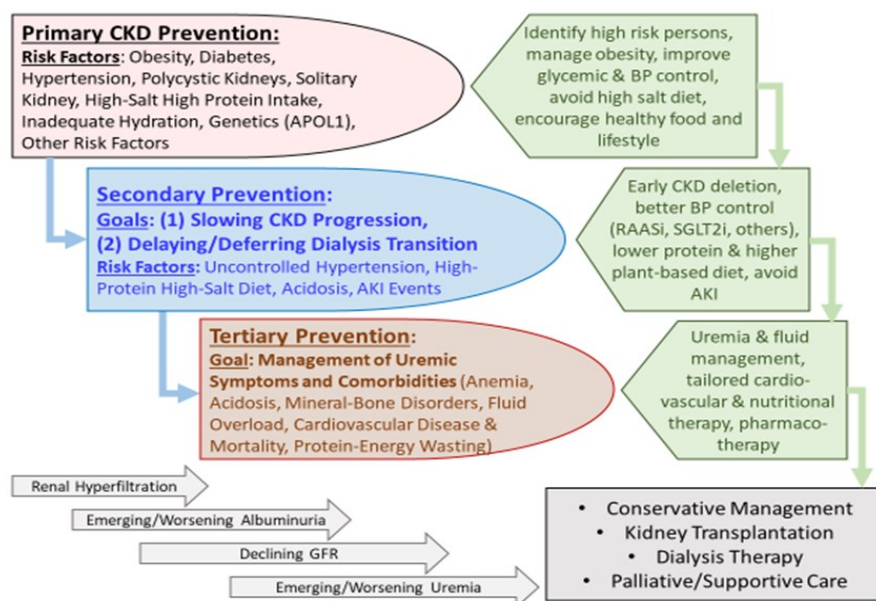
## DEFINITION AND CLASSIFICATION OF CKD PREVENTION

According to the expert definitions including the Center for Disease Control and Prevention<sup>11</sup>, the term “prevention” refers to activities that are typically categorized by the following three definitions: (1) **Primary Preven-**

**tion**, implies intervening before health effects occur in an effort to prevent the onset of illness or injury before the disease process begins (2) **Secondary Prevention** suggests preventive measures that lead to early diagnosis and prompt treatment of a disease to prevent more severe problems developing and includes screening to identify diseases in the earliest stages, and (3) **Tertiary Prevention** indicates managing disease after it is well established in order to control disease progression and the emergence of more severe complications, which is often by means of targeted measures such as pharmacotherapy, rehabilitation, and screening for and management of complications. These definitions have important bearing in the prevention and management of the chronic kidney disease (CKD), and accurate identification of risk factors that cause CKD or lead to faster progression to renal failure as shown in Figure 1 are relevant in health policy decisions and health education and awareness related to CKD.<sup>12</sup>

## PRIMARY PREVENTION OF CKD

The incidence (new cases) and prevalence (cumulative pre-existing cases) of CKD have



**Figure 1:** Overview of the preventive measures in chronic kidney disease (CKD) to highlight the similarities and distinctions pertaining to primary, secondary, and tertiary preventive measures and their intended goals.



been rising worldwide.<sup>13</sup> This primary level of prevention requires awareness of modifiable CKD risk factors and efforts to focus healthcare resources on those patients who are at the highest risk of developing new onset or *de novo* CKD.

Measures to achieve effective primary prevention should focus on the two leading risk factors for CKD including diabetes mellitus and hypertension. Evidence suggests that an initial mechanism of injury is renal hyperfiltration with seemingly elevated glomerular filtration rate, (GFR), above normal ranges. This is often the result of glomerular hypertension that is often seen in patients with obesity or diabetes mellitus, but it can also occur after a high dietary protein intake.<sup>8</sup> Other CKD risk factors include polycystic kidneys or other congenital or acquired structural anomalies of the kidney and urinary tracts, primary glomerulonephritis, exposure to nephrotoxic substances or medications (such as nonsteroidal anti-inflammatory drugs), having one single kidney, e.g. solitary kidney after cancer nephrectomy, high dietary salt intake, inadequate hydration with recurrent volume depletion, heat stress, exposure to pesticides and heavy metals (as has been speculated as the main cause of Mesoamerican Nephropathy), and possibly high protein intake in those at higher risk of CKD.<sup>8</sup> Among non-modifiable risk factors are advancing age and genetic factors such as apolipoprotein 1 (APO1) gene that is mostly encountered in those with sub-Saharan African ethnicity, especially among African Americans. Certain disease states may cause *de novo* CKD such as cardiovascular and atheroembolic diseases (also known as secondary cardiorenal syndrome) and liver diseases (hepatorenal syndrome). Table I shows some of the risk factors of CKD.

Among measures to prevent emergence of *de novo* CKD are screening efforts to identify and manage persons at high risk of

CKD, especially those with diabetes mellitus and hypertension. Hence, targeting primordial risk factors of these two conditions including metabolic syndrome and overnutrition is relevant to primary CKD prevention as is correcting obesity.<sup>14</sup> Promoting healthier lifestyle is an important means to that end including physical activity and healthier diet. The latter should be based on more plant-based foods with less meat, less sodium intake, more complex carbohydrates with higher fiber intake, and less saturated fat. In those with hypertension and diabetes, optimizing blood pressure and glycemic control has shown to be effective in preventing diabetic and hypertensive nephropathies. A recent expert panel suggested that persons with solitary kidney should avoid high protein intake above 1 gram per kilogram body weight per day.<sup>15</sup> Obesity should be avoided, and weight reduction strategies should be considered.<sup>14</sup>

## SECONDARY PREVENTION IN CKD

Evidence suggests that among those with CKD, the vast majority have early-stage of the disease. i.e., CKD Stages 1 and 2 with microalbuminuria (30 to 300 mg/day) or CKD Stage 3B (eGFR between 45 to 60 ml/min/1.73m<sup>2</sup>).<sup>15</sup> In these persons with preexisting disease, the "secondary prevention" of CKD has the highest priority. For these earlier stages of CKD, the main goal of kidney health education and clinical interventions is how to slow disease progression. Uncontrolled or poorly controlled hypertension is one of the most established risk factors for faster CKD progression. The underlying pathophysiology of faster CKD progression relates to ongoing damage to the kidney structure and loss of nephrons with worsening interstitial fibrosis as it happens with sustained hypertension.

The cornerstone of the pharmacotherapy in secondary prevention is the use of angiotensin pathway modulators, also known as

**Table I:** Risk factors for de novo CKD and pre-existing CKD progression.

*Risk Factor	Contribution to de novo CKD	Contribution to CKD progression
Diabetes mellitus	~50% of all CKDs	
Hypertension	~25% of all CKDs	
Obesity	10-20%	
Age	Seen with advancing age, especially in the setting of comorbid conditions.	Some suggests that older CKD patients may have slower progression.
Race, genetics and other hereditary factors: <ul style="list-style-type: none"> <li>• APOL1 gene</li> <li>• Hereditary nephritis (Alport's)</li> </ul>	Common among those with African American ancestors	
Acute glomerulonephritis: post-infectious GN Rapidly progressive GN	<10%	Recurrent GN or exacerbation of proteinuria
Polycystic kidney disorders	<10%, family history of cystic kidney disorders.	
Acute Kidney Injury (AKI) <ul style="list-style-type: none"> <li>• Acute tubular necrosis (ATN)</li> <li>• Acute interstitial nephritis (AIN)</li> </ul>	Repeated AKI bouts can cause CKD	Repeated AKI bouts can accelerate CKD progression
Autoimmune disorders <ul style="list-style-type: none"> <li>• Lupus erythematosus</li> <li>• Other connective tissue disorders</li> </ul>		
Pharmacologic: <ul style="list-style-type: none"> <li>• Medications causing interstitial nephritides (NSAIDS, CNI, chemotherapy, PPI, etc) or ATN (aminoglycosides)</li> <li>• Herbs and herbal medication</li> </ul>	Variable, e.g. in Taiwan, Chinese herb nephropathy may be an important contributor	
Environmental: heavy metal exposure	Rare	
Acquired or congenital solitary kidney <ul style="list-style-type: none"> <li>• Cancer, donor or traumatic nephrectomy</li> <li>• Congenital solitary kidney, unilateral atrophic kidney</li> </ul>		
Acquired urinary tract disorders & obstructive nephropathy	BPH in men Gynecological cancers in women	
Congenital anomalies of the kidney and urinary tract	Mostly in children and young adults	
Inadequate fluid intake <ul style="list-style-type: none"> <li>• Mesoamerican Nephropathy</li> <li>• Others</li> </ul>	Unknown risk, but high prevalence is suspected in central America	Whereas in earlier CKD stages adequate hydration is important to avoid pre-renal AKI bouts, higher fluid intake in more advanced CKD may increase the risk of hyponatremia.
High protein intake	Unknown risk, recent data suggest higher CKD risk or faster CKD progression with high protein diet, in particular from animal sources	Higher protein intake can accelerate the rate of CKD progression
Cardiovascular diseases (cardiorenal)	Ischemic nephropathy	
Liver disease (hepatorenal)	NASH cirrhosis, viral hepatitis	

\*Many of these risk factors contribute to both de novo CKD and its faster progression and hence are relevant to both primary and secondary prevention.

renin-angiotensin-aldosterone system inhibitors (RAASi). These drugs reduce both systemic blood pressure and intraglomerular pressure by opening efferent arterioles of the glomeruli, hence, leading to longevity of the remaining nephrons. Low protein diet appears to have a synergistic effect on RAASi therapy.<sup>16</sup> In terms of the potential effect of controlling glycemic status and correcting

obesity on the rate of CKD progression, there are mixed data. However, recent data suggest that a new class of anti-diabetic medications known as sodium-glucose cotransporter -2 Inhibitors (SGLT2i) can slow CKD progression, but this effect may not be related to glycemic modulation of the medication. Whereas acute kidney injury (AKI) may or may not cause de novo CKD, AKI events that

are superimposed on preexisting CKD may accelerate disease progression.<sup>17</sup> A relatively recent case of successful secondary prevention that highlights the significance of implementing preventive strategies in CKD is the use of a vasopressin V(2)-receptor antagonists in Adult Polycystic Kidney Disease (ADPKD).<sup>18</sup>

### **TERTIARY PREVENTION IN CKD**

In patients with advanced CKD, management of uremia and related comorbid conditions such as anemia, mineral and bone disorders, and cardiovascular disease is of high priority, so that these patients can continue to achieve highest longevity. These measures can be collectively referred to as "tertiary prevention" of CKD.<sup>12,19</sup> In these individuals, cardiovascular disease burden is exceptionally high, especially if they have underlying diabetes or hypertension, while they often do not follow other traditional profile of cardiovascular risk such as obesity or hyperlipidemia. Indeed, in these patients, a so-called "reverse epidemiology" exist, in that hyperlipidemia and obesity appear to be protective at this advanced stage of CKD. This could be due to the overshadowing impact of the "protein-energy wasting" (PEW) that happens more frequently with worsening uremia and which is associated with weight loss and poor outcomes including cardiovascular disease and death. Whereas many of these patients, if they survive ravages of PEW and cardiovascular disease, will eventually receive renal replacement therapy in form of dialysis therapy or kidney transplantation, a new trend is emerging to maintain them longer without dialysis by implementing conservative management of CKD. However, in some with additional comorbidities such as metastatic cancers, palliative measures with supportive care can be considered.

### **APPROACHES TO IDENTIFICA-**

### **TION OF CHRONIC KIDNEY DISEASES**

The lack of awareness of CKD around the world is one of the reasons for late presentation of CKD in both developed and developing economies.<sup>20-22</sup> The overall CKD awareness among general population and even high cardiovascular risk groups across 12 low-income and middle-income countries was less than 10%.<sup>22</sup>

Given its asymptomatic nature, screening of CKD plays an important role in early detection. Consensus and Positional Statements have been published by International Society of Nephrology<sup>23</sup>, National kidney Foundation<sup>24</sup>, Kidney Disease Improving Global Outcomes<sup>25</sup>, NICE Guidelines<sup>26</sup> and Asian Forum for CKD Initiatives.<sup>27</sup> There was lack of trials to evaluate screening and monitoring of CKD.<sup>28</sup> Currently most will promote a targeted screening approach to early detection of CKD. Some of the major groups at risk for targeted screening includes: Patients with diabetes, hypertension, those with family history of chronic kidney disease (CKD), individuals receiving potentially nephrotoxic drugs, herbs or substances or taking indigenous medicine, patients with past history of acute kidney injury and individuals older than 65 years.<sup>27,29</sup> CKD can be detected with 2 simple tests: a urine test for the detection of proteinuria and a blood test to estimate the glomerular filtration rate (GFR).<sup>24,27</sup>

Given that currently a population screening for CKD is not recommended and it was claimed that it might add unintended harm to the general population being screened<sup>28</sup>, there is no specialty society or preventive services group which recommends general screening.<sup>30</sup> Low-income to middle-income countries are ill-equipped to deal with the devastating consequences of CKD, particularly the late stages of the disease. There are suggestions that screening should primarily include high-risk individuals, but also ex-

tend to those with suboptimal levels of risk, e.g., prediabetes and prehypertension.<sup>31</sup>

### **COST-EFFECTIVENESS OF EARLY DETECTION PROGRAMS**

Universal screening of the general population would be time-consuming, expensive and has been shown to be not cost-effective. Unless selectively directed towards high-risk groups, such as the case of CKDu in disadvantaged populations<sup>32</sup>, according to a cost-effectiveness analysis using a Markov decision analytic model, population-based dipstick screening for proteinuria has an unfavorable cost effectiveness ratio.<sup>33</sup> A more recent Korean study confirmed that their National Health Screening Program (NHSP) for chronic kidney disease (CKD) is more cost-effective for patients with diabetes or hypertension than the general population.<sup>34</sup> From an economic perspective, screening CKD by detection of proteinuria was shown to be cost-effective in patients with hypertension or diabetes in a systematic review.<sup>35</sup> The incidence of CKD, rate of progression, and effectiveness of drug therapy were major drivers of cost-effectiveness and thus CKD screening may be more cost-effective in populations with higher incidences of CKD, rapid rates of progression, and more effective drug therapy.

### **A RATIONAL APPROACH TO CKD EARLY DETECTION**

The approach towards CKD early detection will include the decision for frequency of screening, who should perform the screening and intervention after screening.<sup>21</sup> Screening frequency for targeted individuals should be yearly if no abnormality is detected on initial evaluation. This is in line with the Kidney Disease Improving Global Outcomes (KDIGO) resolution that the frequency of testing should be according to the target group to be

tested and generally needs not be more frequent than once per year.<sup>25</sup> Who should perform the screening is always a question especially when the healthcare professional availability is a challenge in lower income economies. Physicians, nurses, paramedical staff and other trained healthcare professionals are eligible to do the screening tests. Intervention after screening is also important and patients detected to have CKD should be referred to primary care and general physicians with experience in management of kidney disease for follow up. A management protocol should be provided to the primary care and general physicians. Further referral to nephrologists for management will be based on the well-defined protocols.<sup>22,25,27</sup>

### **INTEGRATION OF CKD PREVENTION INTO NATIONAL NCD PROGRAMS**

Given the close links between CKD and other NCDs, it is critical that CKD advocacy efforts be aligned with existing initiatives concerning diabetes, hypertension, and cardiovascular disease, particularly in LMIC. Some countries and regions have successfully introduced CKD prevention strategies as part of their NCD programs. As an example, in 2003, a kidney health promotion program was introduced in Taiwan, with its key components including a ban on herbs containing aristolochic acid, public-awareness campaigns, patient education, funding for CKD research, and the setting up of teams to provide integrated care.<sup>36</sup> In Cuba, the Ministry of Public Health has implemented a national program for the prevention of CKD. Since 1996 the program has followed several steps: 1) the analysis of the resources and health situation in the country; 2) epidemiological research to define the burden of CKD; and 3) a continuing education for nephrologists, family doctors, and other health professionals. The main goal has been to bring nephrology care closer to the com-

munity through a regional redistribution of nephrology services and joint management of CKD patients by primary healthcare physicians and nephrologists.<sup>37</sup>

The integration of CKD prevention into NCDs program, has resulted in the reduction of renal and cardiovascular risks in the general population. Main outcomes have been the reduction in the prevalence of risk factors, such as low birth weight, smoking, and infectious diseases. There has been an increased rate of the diagnosis of diabetes and of glycemic control, as well as an increased diagnosis of patients with hypertension, higher prescription use of reno-protective treatment with ACEI and higher rates of blood pressure control.<sup>38</sup> Recently, the US Department of Health and Human Services has introduced an ambitious program to reduce the number of Americans developing end-stage renal disease by 25% by 2030. The program, known as the Advancing American Kidney Health Initiative, has set goals with metrics to measure its success; among them is to put more efforts to prevent, detect, and slow the progression of kidney disease, in part by addressing traditional risk factors like diabetes and hypertension. To reduce the risk of kidney failure, the program contemplates advancing public health surveillance and research to identify populations at risk and those in early stages of kidney disease, and to encourage adoption of evidence-based interventions to delay or stop progression to kidney failure.<sup>39</sup> Ongoing programs, like the Special Diabetes Program for Indians (SDPI) represents an important part of this approach by providing team-based care and care management. Since its implementation, the incidence of diabetes-related kidney failure among American Native populations decreased by over 40% between 2000 and 2015.<sup>40</sup>

## **INVOLVEMENT OF PRIMARY CARE**

## **PHYSICIANS AND OTHER HEALTH PROFESSIONALS**

Detection and prevention of CKD programs require considerable resources both in terms of manpower and funds. Availability of such resources will depend primarily on the leadership of nephrologists.<sup>41</sup> However, the number of nephrologists is not sufficient to provide renal care to the growing number of CKD patients worldwide. It has been suggested that most cases of non-progressive chronic kidney disease can be managed without referral to a nephrologist, and specialist referral can be reserved for patients with an estimated glomerular filtration rate < 30 mL min per 1.73 per m<sup>2</sup>, rapidly declining kidney function, persistent proteinuria, or uncontrolled hypertension or diabetes.<sup>42</sup> It has been demonstrated that with an educational intervention the clinical competence of family physicians increases, resulting in preserved renal function in diabetic patients with early renal disease.<sup>43</sup> The practitioners who received the educational intervention used significantly more angiotensin-converting enzyme inhibitors, angiotensin-receptor blockers, and statins than did practitioners who did not receive it. The results were similar to those found in patients treated by nephrologists.<sup>44</sup> The role of primary health care professionals in the implementation of CKD prevention strategies in LMIC countries has been recently illustrated.<sup>45</sup>

The e-Learning has become an increasingly popular approach to medical education. Online learning programs for NCD prevention and treatment, including CKD, have been successfully implemented in Mexico. By 2015, over 5000 health professionals (including non-nephrologists) had been trained using an electronic health education platform.<sup>46</sup>

## **SHORTAGE OF NEPHROLOGY MANPOWER – IMPLICATION ON**

## PREVENTION

The resources for nephrology care remain at critical levels in many parts of the world. Even in western developed countries, nephrologists are frequently in short supply. In a selection of European countries with similar, predominantly public, health care systems, there was a substantial variation in the nephrology workforce. Countries like Italy, Greece, and Spain reported the highest ratios, while countries like Ireland, Turkey and the UK had the lowest ones.<sup>47</sup> In the USA, the number of nephrologists per 1000 ESRD patients has declined over the years, from 18 in 1997 to 14 in 2010.<sup>48</sup> The situation in the developing world is even worse. With the exception of Nigeria, Sudan, Kenya and South Africa, in many countries of sub-Saharan Africa there are fewer than 10 nephrologists. The number of nephrology nurses and dialysis technicians is also insufficient.<sup>49</sup> In Latin America the average number of nephrologists is 13.4 pmp. However, there is unequal distribution between countries; those with <10 nephrologists pmp (Honduras, 2.1 pmp; Guatemala, 3.3 pmp; and Nicaragua, 4.6 pmp), and those exceeding 25 pmp (Cuba, 45.2 pmp; Uruguay, 44.2 pmp; and Argentina, 26.8 pmp).<sup>50</sup>

The causes of this shortage are multiple. Potential contributors to this variation include the increasing burden of CKD, erosion of nephrology practice scope by other specialists, lack of workforce planning in some countries relative to others, and the development of new care delivery models.<sup>48</sup> A novel strategy has been the successful ISN's Fellowship program. Since its implementation in 1985, over 600 fellows from > 83 LMIC have been trained. A significant number of fellowships were undertaken in selected developed centers within the fellow's own region. In a recent survey, 85% of responding fellows were re-employed by their home institutions.<sup>51,52</sup>

## THE INTERDISCIPLINARY PREVENTION APPROACH

Since 1994, a National Institute of Health consensus advocated for early medical intervention in predialysis patients. Owing to the complexity of care of CKD, it was recommended that patients should be referred to a multidisciplinary team consisting of nephrologist, dietitian, nurse, social worker, and health psychologist, with the aim to reduce predialysis and dialysis morbidity and mortality.<sup>53</sup> In Mexico, a nurse-led, protocol driven, multidisciplinary program reported better preservation in eGFR and a trend in the improvement of quality of care of CKD patients similar to those reported by other Multidisciplinary Clinic (MDC) programs in the developed world. Additionally, more patients started dialysis non-emergently, and some obtained a pre-emptive kidney transplant. For those unable to obtain dialysis or who choose not to, a palliative care program is now being implemented.<sup>54</sup> Care models supporting primary care providers or allied health workers achieved better effectiveness in slowing kidney function decline when compared to those providing specialty care. Future models should address region-specific causes of CKD, increase the quality of diagnostic capabilities, establish referral pathways, and provide better assessments of clinical effectiveness and cost-effectiveness.<sup>55</sup>

## ONLINE EDUCATIONAL PROGRAMS FOR CKD PREVENTION AND TREATMENT

Whereas it is important to enhance the promotion and implementation of "Prevention" of kidney disease and kidney failure amongst healthcare professionals, it is equally important to promote "Prevention" with education programs for those at risk of kidney disease and kidney failure, and with the general population at large. It is a stepwise process, from awareness, engagement, participation,

empowerment and to partnership. As highlighted above, in general, the health literacy of the general population is low. Awareness and understanding of kidney disease are inadequate. Education is key to engaging patients with kidney disease. It is the path to self-management and patient-centered care. Narva et al., reported that patient education was associated with better patient outcomes.<sup>56</sup> Obstacles included the complex nature of kidney disease information, low baseline awareness, limited health literacy and numeracy, limited availability of CKD information, and lack of readiness to learn. New education approaches should be developed through research and quality improvement efforts. Schatell found Web-based kidney education was helpful in supporting patient self-management.<sup>57</sup> The Internet offers a wealth of resources on education. Understanding the types of Internet sources that CKD patients use today can help renal professionals to point patients in the right direction. It is important that reputable healthcare organizations, preferably at a national level, facilitate users to have easier access to health information on their websites (Appendix i). The mode of communication currently used by patients and the population at large is through the internet - websites, portals, and other social media, such as Facebook and Twitter. There are also free apps on popular mobile devices providing education on kidney disease. There is no shortage of information on the internet. The challenge is how to effectively “push” important healthcare information in a targeted manner, and to facilitate users seeking information in their efforts to “pull” relevant and reliable information from the internet. It is important the “pushing” of health information is targeted and specific, relevant for the condition (primary, secondary or tertiary prevention), and is offered at the right time to the right recipient. It is possible with the use of information technology and informatics to provide relevant and targeted information for patients at high risk,

coupling the information based on diagnosis and drugs prescribed. Engagement of professional society resources and patient groups is a crucial step to promote community partnership and patient empowerment on prevention. Additional resources may be available from charitable and philanthropic organizations.

### **RENEWED FOCUS ON PREVENTION AND AWARENESS RAISING AND EDUCATION**

Given the pressing urgency pertaining to the need for increasing education and awareness on the importance of the preventive measures, we suggest the following goals to redirect the focus on plans and actions:

1. Empowerment through health literacy in order to develop and support national campaigns that bring public awareness to prevention of kidney disease.
2. Population-based approaches to manage key known risks for kidney disease, such as blood pressure control and effective management of obesity and diabetes.
3. Implementation of the World Health Organization (WHO) 'Best Buys' approach including screening of at-risk populations for CKD, universal access to essential diagnostics of early CKD, availability of affordable basic technologies and essential medicines and task shifting from doctors to front-line healthcare workers to more effectively target progression of CKD and other secondary preventative approaches.

To that end, the motto 'Kidney Health for Everyone, Everywhere' is more than a tagline or wishful thinking. It is a policy imperative which can be successfully achieved if policy makers, nephrologists and healthcare professionals place prevention and primary care for kidney disease within the context of their Universal Health Coverage programs.

## DISCLOSURE

All the authors declared no competing interests.

## REFERENCES

- 1: International Society of Nephrology. [2019 United Nations High Level Meeting on UHC: Moving Together to Build Kidney Health worldwide](#). 2019:1-4. [Accessed on 20 July 2019].
- 2: Foreman KJ, Marquez N, Dolgert A, et al. [Forecasting life expectancy, years of life lost, and all-cause and cause-specific mortality for 250 causes of death: reference and alternative scenarios for 2016-40 for 195 countries and territories](#). *Lancet*. 2018;392:2052-90. [Accessed 26 May 2020].
- 3: Essue BM, Laba TL, Knaul F, et al. [Economic burden of chronic ill health and injuries for households in low- and middle-income countries](#). In: Jamison DT, Gelband H, Horton S, et al., eds. *Disease Control Priorities Improving Health and Reducing Poverty*,. 3 ed. Washington, DC: World Bank; 2018:121-43. [Accessed 26 May 2020].
- 4: Vanholder R, Annemans L, Brown E, et al. [Reducing the costs of chronic kidney disease while delivering quality health care: a call to action](#). *Nat Rev Nephrol*. 2017;13(7):393-409. [Accessed 26 May 2020].
- 5: Luyckx VA, Tuttle KR, Garcia-Garcia G, et al. [Reducing major risk factors for chronic kidney disease](#). *Kidney Int Suppl*. 2017;7(2):71-87. [Accessed 26 May 2020].
- 6: Luyckx VA, Tonelli M, Stanifer JW. [The global burden of kidney disease and the sustainable development goals](#). *Bull World Health Organ* 2018; 96(6): 414-22D. [Accessed 26 May 2020].
- 7: Tonelli M, Muntner P, Lloyd A, et al. Risk of coronary events in people with chronic kidney disease compared with those with diabetes: a population-level cohort study. *Lancet* 2012; 380(9844): 807-14.
- 8: Kalantar-Zadeh K and Fouque D. Nutritional Management of Chronic Kidney Disease. *N Engl J Med*. 2017;377(18):1765-1776.
- 9: United Nations General Assembly. [Political declaration of the third high-level meeting of the General Assembly on the prevention and control of non-communicable diseases \(2018\)](#). [Accessed 26 May 2020].
- 10: Lopez AD, Williams TN, Levin A et al. [Remembering the forgotten non-communicable diseases](#). *BMC Med*. 2014;12:200. doi: 10.1186/s12916-014-0200-8. [Accessed 26 May 2020].
- 11: Center for Disease Control and Prevention. [Picture of America—Chronic Kidney Disease Fact Sheet](#). [Accessed 26 May 2020].
- 12: Levey AS, Schoolwerth AC, Burrows NR, et al., Centers for Disease Control and Prevention Expert Panel. [Comprehensive public health strategies for preventing the development, progression, and complications of CKD: report of an expert panel convened by the Centers for Disease Control and Prevention](#). *Am J Kidney Dis*. 2009;53(3):522-35. [Accessed 26 May 2020].
- 13: Saran R, Robinson B, Abbott KC, et al. [US Renal Data System 2018 Annual Data Report: Epidemiology of Kidney Disease in the United States](#). *Am J Kidney Dis*. 2019;73(3S1):A7-A8. [Accessed 26 May 2020].
- 14: Kovesdy CP, Furth SL, Zoccali C, World Kidney Day Steering Committee. [Obesity and Kidney Disease: Hidden Consequences of the Epidemic](#). *BIMJ*. 2017;13(1):1-11. [Accessed 26 May 2020].
- 15: Webster AC, Nagler EV, Morton RL and Masson P. Chronic Kidney Disease. *Lancet*. 2017;389 (10075):1238-1252.
- 16: Koppe L and Fouque D. The Role for Protein Restriction in Addition to Renin-Angiotensin-Aldosterone System Inhibitors in the Management of CKD. *Am J Kidney Dis*. 2019;73 (2):248-257.
- 17: Rifkin DE, Coca SG and Kalantar-Zadeh K. [Does AKI truly lead to CKD?](#) *J Am Soc Nephrol*. 2012;23(6):979-84.
- 18: Torres VE, Chapman AB, Devuyst O et al., [Tolvaptan in patients with autosomal dominant polycystic kidney disease](#). *N Engl J Med* 2012;367(25):2407-18. [Accessed 26 May 2020].
- 19: International Society of Nephrology. [KDIGO 2012 Clinical Practice Guideline for the Evaluation and Management of Chronic Kidney Disease](#). *Kidney Int Suppl*. 2013;3(1):1-163. [Accessed 26 May 2020].
- 20: Verhave JC, Troyanov S, Mongeau F et al. [Prevalence, awareness, and management of CKD and cardiovascular risk factors in publicly funded health care](#). *Clin J Am Soc Nephrol* 2014;9:713-9. [Accessed 26 May 2020].



- 21: Chow KM, Szeto CC, Kwan B, Leung CB, Li PK. [Public lacks knowledge on chronic kidney disease: Telephone survey.](#) *Hong Kong Med J* 2014; 20: 139–44. [Accessed 26 May 2020].
- 22: Ene-Iordache B, Perico N, Bikbov B et al. [Chronic kidney disease and cardiovascular risk in six regions of the world \(ISN-KDDC\): A cross-sectional study.](#) *Lancet Glob Health* 2016; 4: e307–19. [Accessed 26 May 2020].
- 23: Li PKT, Weening JJ, Dirks J, et al. A report with consensus statements of the International Society of Nephrology 2004 Consensus Workshop on Prevention of Progression of Renal Disease. *Kidney Int Suppl* 2005 Apr;(94):s2-7.
- 24: Vassalotti JA, Stevens LA, Levey AS. [Testing for chronic kidney disease: A position statement from the National Kidney Foundation.](#) *Am. J. Kidney Dis.* 2007; 50: 169–80. [Accessed 26 May 2020].
- 25: Levey AS, Atkins R, Coresh J et al. [Chronic kidney disease as a global public health problem: Approaches and initiatives – a position statement from Kidney Disease Improving Global Outcomes.](#) *Kidney Int.* 2007;72:247–59. [Accessed 26 May 2020].
- 26: Crowe E, Halpin D, Stevens P; Guideline Development Group. Early identification and management of chronic kidney disease: summary of NICE guidance. *BMJ* 2008;337:a1530.
- 27: Li PKT, Chow KM, Matsuo S, et al. [Asian Chronic Kidney Disease \(CKD\) Best Practice Recommendations – Positional Statements for Early Detection of CKD from Asian Forum for CKD Initiatives \(AFCKDI\).](#) *Nephrology (Carlton)* 2011;16(7):633-641. [Accessed 26 May 2020].
- 28: Fink HA, Ishani A, Taylor BC, et al. [Screening for, monitoring, and treatment of chronic kidney disease stages 1 to 3: A systematic review for the U.S. Preventive Services Task Force and for an American College of Physicians Clinical Practice Guideline.](#) *Ann Intern Med* 2012;156: 570–581. [Accessed 26 May 2020].
- 29: Li PKT, Ng JK, Cheng YL, Kwan TH, et al. Relatives In Silent Kidney disease Screening study (RISKS): a Chinese cohort study. *Nephrology (Carlton)* 2017;22 Suppl 4:35-42.
- 30: Samal L, Linder JA. [The primary care perspective on routine urine dipstick screening to identify patients with albuminuria.](#) *Clin J Am Soc Nephrol* 2013 Jan;8(1):131-5. [Accessed 26 May 2020].
- 31: George C, Mogueo A, Okpechi I, Echouffo-Tcheugui JB, Kengne AP. [Chronic kidney disease in low-income to middle-income countries: the case for increased screening.](#) *BMJ Glob Health* 2017;2(2):e000256. [Accessed 26 May 2020].
- 32: Gonzalez-Quiroz M, Nitsch D, Hamilton S, et al. DEGREE Study Steering Committee. [Rationale and population-based prospective cohort protocol for the disadvantaged populations at risk of decline in eGFR \(CO-DEGREE\).](#) *BMJ Open* 2019;9 :e031169. [Accessed 26 May 2020].
- 33: Boulware LE, Jaar BG, Tarver-Carr ME, Brancati FL, Powe NR. [Screening for proteinuria in US adults: A cost-effectiveness analysis.](#) *JAMA* 2003; 290: 3101–14. [Accessed 26 May 2020].
- 34: Go DS, Kim SH, Park J, Ryu DR, Lee HJ, Jo MW. Cost-utility analysis of the National Health Screening Program for chronic kidney disease in Korea. *Nephrology (Carlton)* 2019;24(1):56-64.
- 35: Komenda P, Ferguson TW, Macdonald K et al. [Cost-effectiveness of primary screening for CKD: A systematic review.](#) *Am J Kidney Dis.* 2014;63:789–97. [Accessed 26 May 2020].
- 36: Hwang SJ, Tsai JC, Chen HC. [Epidemiology, impact and preventive care of chronic kidney disease in Taiwan.](#) *Nephrology (Carlton)*. 2010;15(Suppl 2)3-9. [Accessed 26 May 2020].
- 37: Almaguer M, Herrera R, Alfonso J, Magrans C, Mañalich R, Martínez A. [Primary health care strategies for the prevention of end-stage renal disease in Cuba.](#) *Kidney Int Suppl.* 2005; 97:S4-10. [Accessed 26 May 2020].
- 38: Alamaguer-Lopez M, Herrera-Valdez R, Diaz J, Rodriguez O. Integration of chronic kidney disease prevention into noncommunicable disease programs in Cuba. In G. Garcia-Garcia, L. Y. Agodoa, & K. C. Norris (Eds.), *Chronic Kidney Disease in Disadvantaged Populations 2017* (pp. 357-365). London: Elsevier Inc.
- 39: U.S. Department of Health and Human Services. [Advancing American Kidney Health. 2019.](#) [Accessed 26 Sept 2019].
- 40: U.S. Department of Health and Human Services. [The Special Diabetes Program for Indians: Estimates of Medicare savings. 2019.](#) [Accessed 26 Sept 2019].
- 41: Bello AK, Nwankwo E, El Nahas AM. [Prevention of chronic kidney disease: a global challenge.](#) *Kidney Int Suppl* 2005;98:S11-17. [Accessed 26 May 2020].

- 42: James MT, Hemmelgarn BR, Tonelli M. Early recognition and prevention of chronic kidney disease. *Lancet.* 2010;375(9722):1296-1309.
- 43: Cortés-Sanabria L, Cabrera-Pivaral CE, Cueto-Manzano AM, et al. Improving care of patients with diabetes and CKD: a pilot study for a cluster-randomized trial. *Am J Kidney Dis.* 2008;51(5):777-788.
- 44: Martínez-Ramírez HR, Jalomo-Martínez B, Cortés-Sanabria L, et al. Renal function preservation in type 2 diabetes mellitus patients with early nephropathy: a comparative prospective cohort study between primary health care doctors and a nephrologist. *Am J Kidney Dis.* 2006;47(1):78-87.
- 45: Cueto-Manzano AM, Martínez-Ramírez HR, Cortes-Sanabria L, Rojas-Campos E. CKD screening and prevention strategies in disadvantaged populations. The role of primary health care professionals. In G. Garcia-Garcia, L. Y. Agodoa, & K. C. Norris (Eds.), *Chronic Kidney Disease in Disadvantaged Populations.* 2017:329-335. London: Elsevier, Inc.
- 46: Tapia-Conyer R, Gallardo-Rincon H, Betancourt-Cravioto M. Chronic kidney disease in disadvantaged populations: Online educational programs for NCD prevention and treatment. In G. Garcia-Garcia, L. Y. Agodoa, & K. C. Norris (Eds.), *Chronic Kidney Disease in Disadvantaged Populations.* 2017:337-345. London: Elsevier, Inc.
- 47: Bello AK, Levin A, Manns BJ, et al. Kidney Health for Life Initiative. Effective CKD care in European countries: challenges and opportunities for health policy. *Am J Kidney Dis.* 2015; 65(1):15-25.
- 48: Sharif MU, Elsayed M E, Stack AG. [The global nephrology workforce: emerging threats and potential solutions!](#) *Clin Kidney J.* 2016;9(1):11-22. [Accessed 26 May 2020].
- 49: Naicker S, Eastwood JB, Plange-Rhule J, Tutt RC. [Shortage of healthcare workers in sub-Saharan Africa: a nephrological perspective.](#) *Clin Nephrol.* 2010;74(Suppl 1):S129-133. [Accessed 26 May 2020].
- 50: Cusumano AM, Rosa-Diez GJ, Gonzalez-Bedat MC. [Latin American Dialysis and Transplant Registry: Experience and contributions to end-stage renal disease epidemiology.](#) *World J Nephrol.* 2016;5(5):389-397. [Accessed 26 May 2020].
- 51: Feehally J, Brusselmans A, Finkelstein FO, Harden P, Harris D, Manuzi G, Naicker S, Tonelli M, Cameron H. [Improving global health: measuring the success of capacity building outreach programs: a view from the International Society of Nephrology.](#) *Kidney Int Suppl* (2011). 2016;6(2):42-51. [Accessed 26 May 2020].
- 52: Harris DC, Dupuis S, Couser WG, Feehally J. [Training nephrologists from developing countries: does it have a positive impact?](#) *Kidney Int Suppl* (2011). 2012;2(3):275-278. [Accessed 26 May 2020].
- 53: Consensus Development Conference Panel. [Morbidity and mortality of renal dialysis: an NIH consensus conference statement.](#) *Ann Intern Med.* 1994;121(1):62-70. [Accessed 26 May 2020].
- 54: Garcia-Garcia G, Martinez-Castellanos Y, Renoirte-Lopez K, Barajas-Murguia A, de la Torre-Campos L, Becerra-Muñoz LE, Gonzalez-Alvarez JA, Tonelli M. [Multidisciplinary care for poor patients with chronic kidney disease in Mexico.](#) *Kidney Int Suppl* (2011). 2013;3(2):178-183. [Accessed 26 May 2020].
- 55: Stanifer JW, Von Isenburg M, Chertow GM, Anand S. [Chronic kidney disease care models in low- and middle-income countries: a systematic review.](#) *BMJ Glob Health.* 2018;3(2):e000728. [Accessed 26 May 2020].
- 56: Narva AS, Norton JM, Boulware LE. [Educating Patients about CKD: The Path to Self-Management and Patient-Centered Care.](#) *Clin J Am Soc Nephrol.* 2016; 7;11(4):694-703. [Accessed 26 May 2020].
- 57: Schatell D. Web-based kidney education: supporting patient self-management. *Semin Dial* 2013;26(2):154-8.
-