

UC Irvine

UC Irvine Previously Published Works

Title

Protein interaction network topology uncovers melanogenesis regulatory network components within functional genomics datasets

Permalink

<https://escholarship.org/uc/item/39k2c15q>

Journal

BMC Systems Biology, 4(1)

ISSN

1752-0509

Authors

Ho, Hsiang
Milenkovic, Tijana
Memisevic, Vesna
[et al.](#)

Publication Date

2010

DOI

10.1186/1752-0509-4-84

Supplemental Material

<https://escholarship.org/uc/item/39k2c15q#supplemental>

Copyright Information

This work is made available under the terms of a Creative Commons Attribution License, available at <https://creativecommons.org/licenses/by/4.0/>

Peer reviewed

RESEARCH ARTICLE

Open Access

Protein interaction network topology uncovers melanogenesis regulatory network components within functional genomics datasets

Hsiang Ho¹, Tijana Milenkovic^{†2}, Vesna Memišević², Jayavani Aruri³, Nataša Przulj⁴ and Anand K Ganesan^{*1,3}

Abstract

Background: RNA-mediated interference (RNAi)-based functional genomics is a systems-level approach to identify novel genes that control biological phenotypes. Existing computational approaches can identify individual genes from RNAi datasets that regulate a given biological process. However, currently available methods cannot identify which RNAi screen "hits" are novel components of well-characterized biological pathways known to regulate the interrogated phenotype. In this study, we describe a method to identify genes from RNAi datasets that are novel components of known biological pathways. We experimentally validate our approach in the context of a recently completed RNAi screen to identify novel regulators of melanogenesis.

Results: In this study, we utilize a PPI network topology-based approach to identify targets within our RNAi dataset that may be components of known melanogenesis regulatory pathways. Our computational approach identifies a set of screen targets that cluster topologically in a human PPI network with the known pigment regulator Endothelin receptor type B (EDNRB). Validation studies reveal that these genes impact pigment production and EDNRB signaling in pigmented melanoma cells (MNT-1) and normal melanocytes.

Conclusions: We present an approach that identifies novel components of well-characterized biological pathways from functional genomics datasets that could not have been identified by existing statistical and computational approaches.

Background

Identifying the complete set of genes that regulate a biological phenotype is a challenge of systems biology. Availability of systems-level protein-protein interaction (PPI), gene expression, and functional genomics (FG) data has facilitated the development of integrative computational approaches to uncover genes involved in biological processes [1]. Integration of *C. elegans* FG data [1] with existing gene expression and PPI data has facilitated the discovery of co-expressed gene networks [2], early embryogenesis control networks [3], and large-scale protein function networks [4]. Integrating *Drosophila* RNAi datasets with PPI networks helped identify novel functional regulators of biological phenotypes, demonstrating

that PPI networks and RNAi datasets can be effectively integrated to derive additional functional information from RNAi screens [5]. Application of these methods to mammalian RNAi datasets has been more problematic secondary to higher false positive and false negative rates of mammalian RNAi screens [6]. Biological pathways are distinct, experimentally-validated subnetworks of proteins within the larger PPI network that interact with each other by well defined mechanisms to regulate a specific biologic phenotype. While currently available methods can identify components of RNAi datasets that interact with each other within PPI networks [7], no method currently exists to determine which of these screen "hits" are novel components of well defined pathways known to regulate the process under study.

Numerous studies have identified molecular determinants of pigment variation: 127 mouse coat color genes have been identified [8] that coordinately regulate the transcription, translation, and intracellular trafficking of

* Correspondence: aganesan@uci.edu

¹ Department of Biological Chemistry, University of California, Irvine, CA 92697-1700, USA

[†] Contributed equally

Full list of author information is available at the end of the article

melanogenic enzymes [9]. These studies have identified the master regulator of melanocyte transcription microphthalmia-associated transcription factor (MITF) [10], several melanogenic enzymes [9], and regulators of melanosome formation and trafficking [11]. Despite these advances, our current understanding of skin and eye color variability is incomplete [12].

Recently, we utilized a systems-level FG platform to identify 92 novel genes that regulate melanin production, novel regulators of melanin secretion, and novel depigmenting agents [13]. Notably, our approach failed to identify many known regulators of melanogenesis among our top tier hits, and annotation data failed to identify connections between many screen targets and biological pathways known to regulate melanogenesis. In this study, we apply PPI network topology-based computational methods to identify genes within our FG dataset that are novel components of biological pathways known to regulate melanogenesis.

Results and Discussion

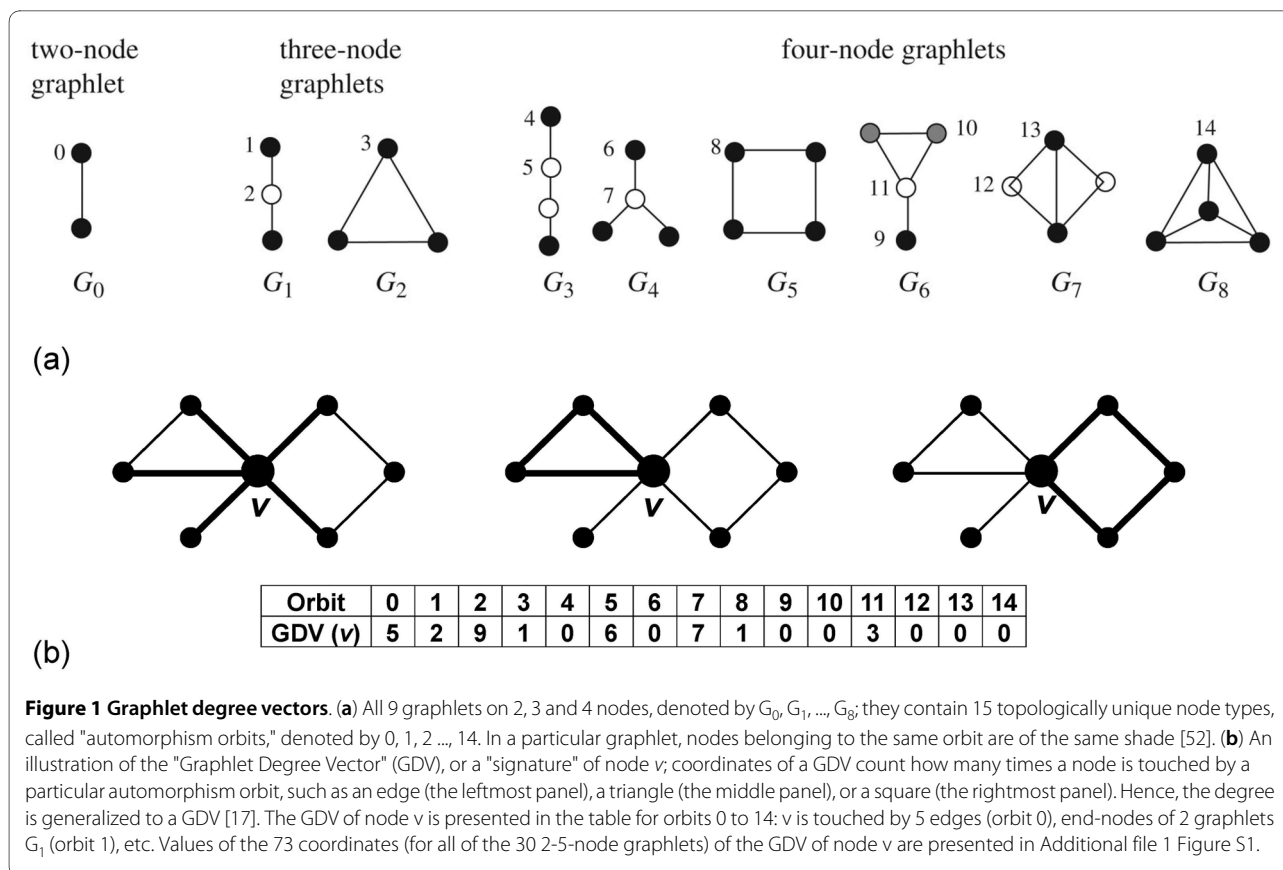
Topological similarity uncovers novel melanogenesis-related regulatory network members within a functional genomics dataset

In this study, we examine the interrelationship between PPI network topology and both known and newly identified biological pathways that regulate melanogenesis. In PPI networks, nodes correspond to proteins and edges represent possible interactions amongst them. To increase the coverage of PPIs, we analyze the union of the *physical* human PPI networks from HPRD [14], BioGRID [15], and by Radivojac et al. [16], consisting of 47,303 interactions amongst 10,282 proteins. We characterize the topology of nodes' neighborhoods in the PPI network with their "graphlet degree vectors" (GDVs) [17]; graphlets are small connected induced subgraphs of a network (Figure 1). GDV of a node, also called the node "signature," generalizes the degree of a node that counts how many edges the node touches into the vector of graphlet degrees that counts how many graphlets of a given type, such as a triangle or a square, the node touches (see Figure 1 and additional file 1 Figure S1 for an illustration). All 2-5-node graphlets, presented in Figure 1 and additional file 1 Figure S1, are taken into account. Clearly, the degree of a node is the first coordinate in this vector, since an edge (graphlet G_0 in Figure 1) is the only 2-node graphlet. To take into account the symmetry groups within a graphlet, the notion of automorphism orbits (or just orbits, for brevity) is used for all graphlets with 2-5-nodes. For example, it is topologically relevant to distinguish between nodes touching a 3-node linear path (graphlet G_1 in Figure 1) at an end, or at the middle node. By taking into account these symmetries between nodes of a graphlet, there are 73 different orbits for 2-5-

node graphlets, numbered from 0 to 72 in Figure 1 and additional file 1 Figure S1. Thus, GDV of a node, describing the complex topological wiring of node's up to "4-deep neighborhood," has 73 coordinates [17]. We compute pairwise "similarities" between GDVs; higher signature similarity corresponds to higher topological similarity of the nodes' "network surroundings" (see [17] for details). We say that two proteins are "signature-similar" if their GDV similarity is above a given threshold. This measure has been used to demonstrate that topologically similar proteins have similar functions [17,18].

To find proteins topologically similar to known melanogenesis regulators in the context of the PPI network, we compute GDVs for pigment regulators identified in our siRNA screen (henceforth called Screen Pigment Regulators (SPRs)). As previous studies demonstrated that many known pigment regulators (KPRs) were not present in our top tier targets but did have some impacts on pigment production [13], we define SPRs as genes whose siRNAs have some impact on pigment production (Z -score < -1 or > 1) (Additional File 2 Table S1). 1,244 SPRs are present in the existing PPI network. Also, the existing PPI network contains 41 KPRs from the ESPCR database, 10 of which are SPRs at the same time [8]. We note that a choice of a higher Z -score threshold might be more appropriate; however, such a choice omitted several KPRs from the analyzed dataset and resulted in a limited number of SPRs in the dataset that was insufficient for any statistical analysis.

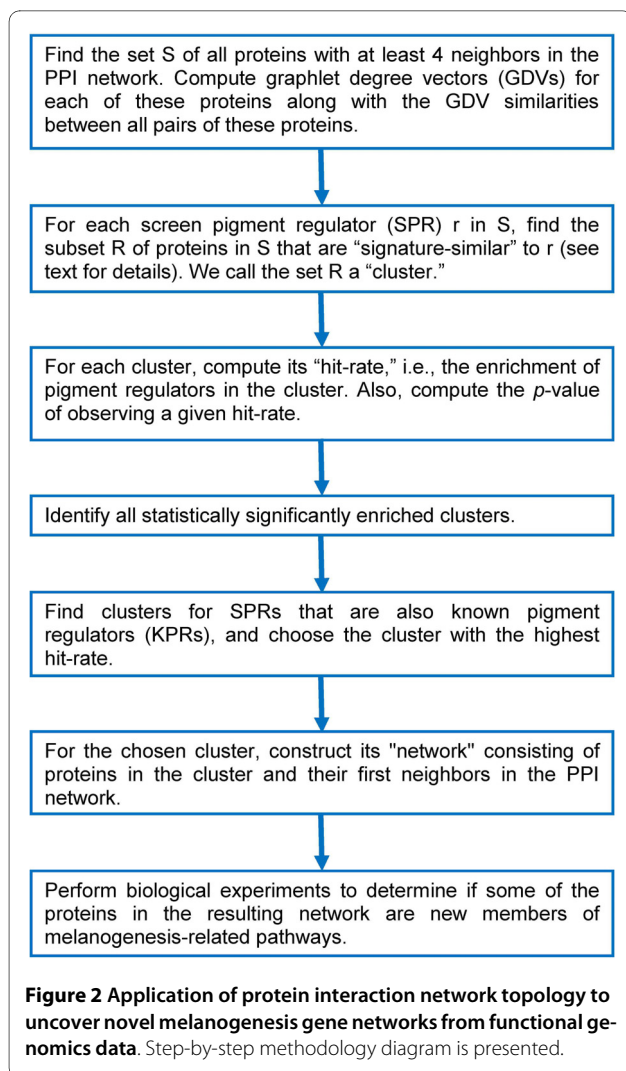
To identify specific melanogenesis regulatory subnetworks hidden in our FG dataset, we identify SPRs with similar GDVs in the PPI network, with the hypothesis that some signature-similar SPRs would be components of the same protein subnetwork. For each SPR, we form a "cluster" containing that protein and all other proteins in the network that are signature-similar to it (see Methods). Thus, the clusters contain proteins that have similar topologies within the PPI network. We measure the statistical significance of SPRs to cluster together. We denote by "hit-rate" the percentage of proteins in a cluster that are SPRs, excluding the protein for which the cluster was formed (see Methods and Figure 2). We find that 26 of our clusters are statistically significantly enriched with SPRs at p -value threshold of SPR-enrichment of 0.05 (see Methods); the list of proteins for which the clusters were formed, together with their hit-rates and p -values, is provided in additional file 3 Table S2. By analyzing random clusters (see Methods) and by using the same enrichment and statistical significance criteria, we find that it is unlikely to observe 26 statistically significantly SPR-enriched clusters by chance (p -value = 0.009; see Methods). Note that the relatively low number of statistically significantly SPR-enriched clusters is expected due to incompleteness of SPR (KPR) data set. Since the number



of SPRs (KPRs) will increase in the future, it is expected that the enrichment of each of the clusters will increase and their p-values will decrease. Consequently, the number of statistically significantly enriched clusters will increase as well.

By uncovering clusters that are statistically significantly enriched with SPRs, we demonstrate that genes with functional roles in melanogenesis indeed have similar topological signatures in the PPI network. To determine whether any of the SPRs are novel components of *known* melanogenesis regulatory pathways, we examine clusters of 10 SPRs that are at the same time KPRs and choose for further analyses the cluster with the highest hit-rate. The identified cluster is the cluster formed for EDNRB. It contains 13 proteins in total and its hit-rate is 41.67%. We analyze this cluster despite that it is not statistically significantly SPR-enriched since (1) its hit-rate could be considered "state of the art" given the noisiness of biological experiments, SPR (KPR) data set, the PPI network data that we use [18], and (2) statistically non-significant results may be biologically and scientifically interesting and important, whereas statistically significant results can turn out not to be [19]. The fact that five SPRs topologically cluster with EDNRB (which is both an SPR and a KPR) and given that we have previously demonstrated the

link between topological and functional similarity [17,18,20], we conclude that our FG dataset may contain unappreciated members of biological pathways or sub-networks that regulate melanogenesis. Thus, to uncover EDNRB's corresponding melanogenesis-related pathway, we form the "EDNRB network" by expanding in the PPI network around the proteins in EDNRB cluster as follows. The "EDNRB network" (Figure 3) contains the set of proteins in EDNRB cluster and their direct neighbors, along with all interactions from the human PPI network that exist between these nodes. There are 109 nodes in EDNRB network (Figure 3): the proteins that are in the cluster part of the network (i.e., are topologically similar to EDNRB) include 2 KPRs (EDNRB, PAX2), 5 SPRs (ADRBK2, CACNA1B, GAP43, LRP8, and SPTBN2) and 6 proteins not detected by our siRNA screen (TAOK2, DPYSL2, FHOD1, LPXN, FHL1, and STRN3); the proteins that are the neighbors of the cluster proteins in the EDNRB network include 3 KPRs (EDN3, GNA11, and RB1), 18 SPRs (BDKRB2, AGTR1, GRK6, PTK2B, ITGA4, DLG4, OPRM1, PLCD1, MCC, WASF1, ACTA1, TUBA1, CELSR3, CBX4, MAPK8, MAPK8IP1, MAP2K3, MAP2K6), and 75 proteins that are not detected by our siRNA screen. We include direct neighbors of the cluster proteins because the network without them is discon-



nected. Also, since biological pathways are contiguous "linear" structures in PPI networks, including them will aid in detecting new members of a biological pathway.

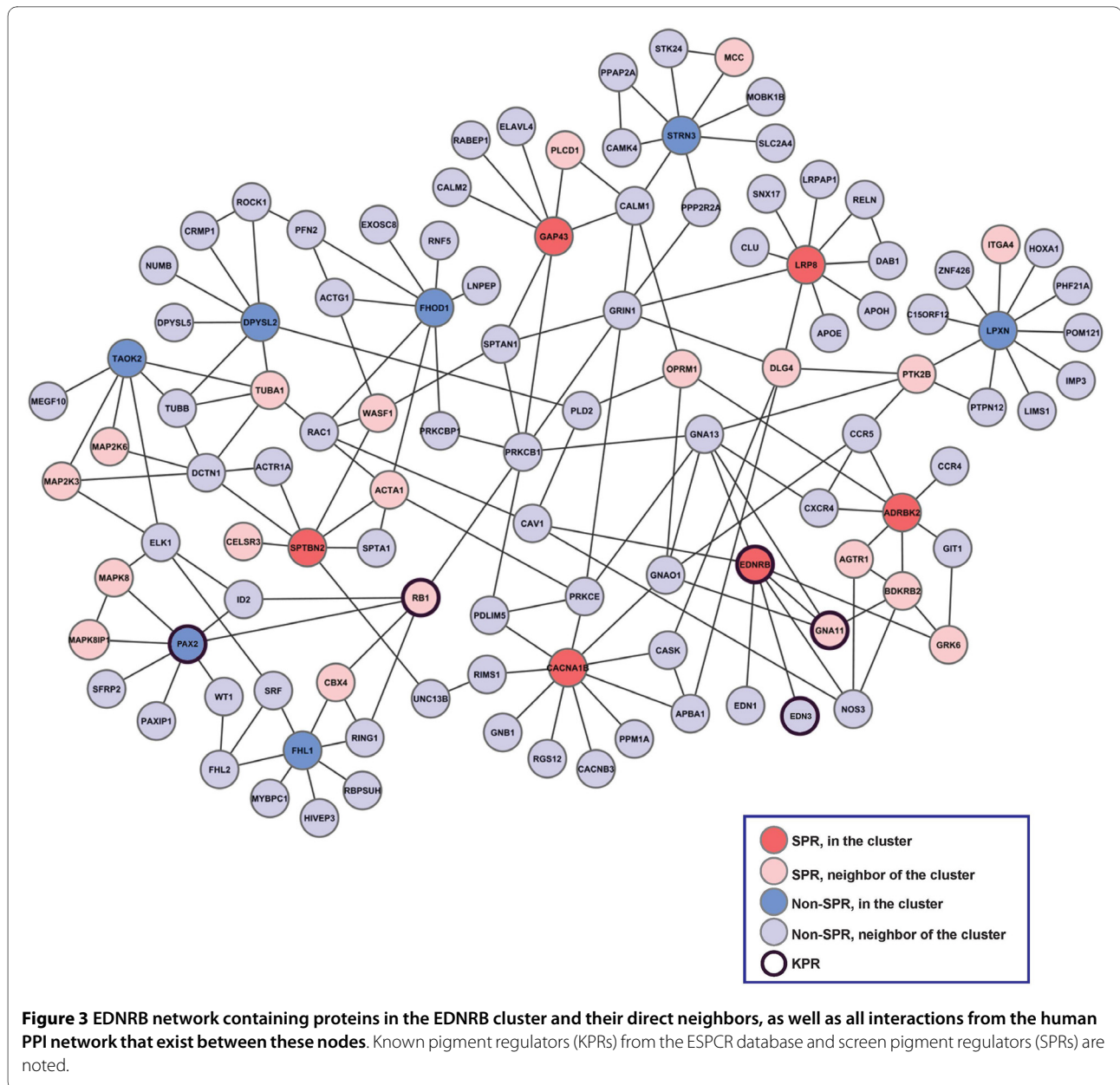
An alternative approach to finding new pathway members would be to consider simply an SPR and its direct neighbors as cluster members, since it has been shown that proteins that are closer in the network (i.e., direct neighbors) are more likely to be functionally similar (i.e., involved in a same biological process) than proteins that are further apart in the network [20]. Every cluster defined in this way would topologically be somewhere between a "star-like" network structure centered at the chosen SPR (as illustrated in Additional File 4 Figure S2 that presents the EDNRB cluster obtained by this "direct neighborhood" approach) and a fully connected network. That is, network clusters obtained with the direct neighborhood approach would have the diameter of either 1 or 2, where the diameter is defined as the maximum of shortest path lengths between all node pairs in the net-

work. However, we tested *all* biological pathways from KEGG [21] mapped onto the human PPI network to compare their diameters with the diameters of the direct neighborhood-based clusters. Due to the incompleteness of the PPI network data, about 30% of KEGG pathways were consisting mainly of isolated edges after they were mapped onto the human PPI network; hence, we removed these pathways from our analysis. For the remaining 70% of the mapped pathways, we found that 93% of them have diameters larger than 2. The distribution of diameters of these pathways was bell-shaped, with the average of 6.24 and the standard deviation of 2.6. Therefore, since pathways correspond to parts of PPI networks that are of relatively large diameters, the simple direct neighborhood approach is not appropriate for finding new pathway members, since it can only produce subgraphs of small diameters. Hence, other approaches should be sought. In contrast, our GDV-based method generates EDNRB network of diameter 9. Also, since GDVs are based on all up to 5-node graphlets hence covering parts of the PPI network of diameter < 9 around an SPR of interest, the GDV-based approach is more appropriate for finding new pathway members than the direct neighborhoods.

With our GDV-based approach, in addition to the proteins in the cluster formed for a given SPR, we include into the SPR's "network" (defined above) the direct neighbors of proteins in the cluster to make the network connected; note that by doing so, we are indirectly taking into account the fact that direct neighbors are more likely to be involved in a same biological process than proteins that are further apart in the network [20]. For comparison, we perform the equivalent procedure for the direct neighborhood approach and evaluate whether this increases the diameters of such "expanded" direct neighborhood-based subnetworks. However, even if we include direct neighbors of the SPR's direct neighbors into the cluster, the diameter of the resulting networks would be between 1 and 4. Even if the resulting subnetworks would have the diameter of 4, that diameter is almost one standard deviation below the average diameter of known biological pathways (which is 6.24, as stated above). In contrast, our GDV-based approach produces PPI subnetworks with diameters between 5 and 9, with the average of 6.33 and the standard deviation of 1.5, thus mimicking well the diameters of known biological pathways.

Validation of novel melanogenesis regulatory genes identified by topological clustering analysis

Topological clustering identified both SPRs and potentially novel pigment regulators that are components of the EDNRB network. As EDNRB and GNA11 siRNA impact pigment formation in our screen and regulate



melanogenesis by well-characterized mechanisms, we next sought to experimentally validate novel EDNRB pathway components identified by our method. EDNRB, a G-protein coupled receptor mutated in Waardenburg-Shah syndrome [22], binds to EDN3 [23] and activates an intracellular signaling cascade via GNA11 [24]. Activation of EDNRB leads to PKC activation, and subsequent ERK phosphorylation. Phosphorylated ERK can either activate MITF by protein phosphorylation, or up-regulate MITF transcription through CREB phosphorylation [25,26]. MITF directly activates the expression of many melanogenesis regulators, such as tyrosinase, the rate-limiting enzyme in melanin synthesis [27]. In addition to regulating melanogenesis, EDNRB plays a critical role in

neural crest development [28]. As some proteins that interact with EDNRB may impact neural crest development as opposed to melanogenesis, we focused on validating proteins in the EDNRB network most likely to directly impact melanogenesis. For this analysis, we select half of the SPRs most likely to directly regulate melanogenesis (Z-score < -1) from Figure 3: two SPRs in the cluster (EDNRB, CACNA1B), and four SPRs adjacent to the cluster (PTK2B, AGTR1, PLCD1, OPRM1). We then validate known regulators of pigmentation in our experimental system (PAX2, EDNRB, GNA11, EDN3), and examine other proteins in the EDNRB network not identified in our FG screen (FHOD1, DPYSL2, TAOK2, FHL1, RING1, CXCR4).

To experimentally validate our computational observations, we transfect MNT-1 cells with three siRNAs directed towards each gene or control siRNAs. The ability of each target siRNA to inhibit pigment production is compared to tyrosinase siRNA to control for the efficacy of siRNA transfection and the background absorbance of MNT-1 cells [13]. In this analysis, we utilize different siRNA sequences than those used in the initial FG screen (Additional File 3 Table S2) to further exclude any phenotypes from the initial screen that were the result of RNAi off-target effects. We also utilize a more robust cutoff to identify pigment regulators (~50% normalized pigment production) to identify only those genes with significant impacts on pigment production. SiRNAs targeting KPRs (EDNRB, GNA11, PAX2, EDN3) have impacts on pigment production, consistent with published studies. A majority of analyzed SPRs (86%) from EDNRB network (PTK2B, AGTR1, PLCD1, OPRM1) have significant impacts on pigment production observed with more than one oligonucleotide sequence, indicating that the phenotypes are not secondary to RNAi off-target effects (Figure 4a). Other proteins from EDNRB cluster (FHOD1, DPYSL2, TAOK2, FHL1) have a high retest rate as well (100%) (Figure 4a). The one gene that did not impact pigmentation in this analysis (CACNA1B) is a regulator of postganglionic synaptic transmission [29], an EDNRB neurologic phenotype independent of melanogenesis [30]. These results demonstrate that our EDNRB network contains newly defined regulators of pigment production (PTK2B, AGTR1, PLCD1, OPRM1, FHOD1, DPYSL2, TAOK2, FHL1, RING1, CXCR4).

Impact of novel EDNRB pathway components on downstream signaling

Our RNAi validation studies (Figure 4a) identified genes in the EDNRB network that impact pigment production. Based on functional annotation (Table 1), we next select 10 pigment regulators from Figure 4a to verify that these genes impact pigment production by impacting EDNRB signaling. Quantitative RT-PCR was utilized to determine the impact of each siRNA on its cognate target. RT-PCR validation studies were performed at two different time-points to account for the potential differences in half-life of an individual mRNA. Our validation studies revealed that each siRNA inhibited the expression of the target gene at either 24 or 48 hours after siRNA transfection (Figure 4b). SiRNAs directed towards known EDNRB pathway components (EDNRB, EDN3, and GNA11) impact MITF protein levels, consistent with published studies [26] (Figure 4c). Similarly, novel EDNRB pathway components (FHOD1, TAOK1, AGTR1, RING1, DPYSL2, PLCD1) impact MITF protein levels, suggesting that these genes may have similar impacts on pigment production. Activation of the EDNRB pathway leads to

increased MITF expression through p-CREB or leads to activation of MITF protein through phosphorylation [26]. In the simplest model, genes that impact MITF phosphorylation will impact tyrosinase expression while genes that impact MITF expression will impact both MITF and tyrosinase expression. Therefore, we would predict that siRNAs that inhibit MITF phosphorylation would have impacts on tyrosinase expression but not MITF expression, while siRNAs that impact CREB phosphorylation would inhibit both tyrosinase and MITF expression. To further validate this assertion, we examine the impact of each siRNA on the mRNA expression of MITF and tyrosinase. EDNRB, EDN3, and GNA11 have modest impacts on both MITF and tyrosinase expression, as predicted. Most of the other siRNAs examined impact on both MITF and tyrosinase expression, with the exception of DPYSL2 (Figure 5a).

To determine the role of individual targets in EDNRB signaling, we examined whether the 9 genes (EDNRB, GNA11, EDN3, FHOD1, TAOK1, AGTR1, RING1, PTK2B, and PLCD1) that impact MITF and tyrosinase mRNA expression also impact CREB phosphorylation. Previous studies have determined that MNT-1 melanoma cells contain a BRAF mutation resulting in constitutive ERK activity [31]. Therefore, we would predict that the majority of EDNRB pathway components that impact pigment production in MNT-1 cells would do so via impacts on CREB phosphorylation, as the ERK pathway leading to MITF phosphorylation is constitutively active. Treatment of MNT-1 cells with EDNRB, EDN3, and GNA11 siRNAs impacts CREB phosphorylation but not ERK phosphorylation (Figure 5b). Similarly, TAOK1, PTK2B, FHOD1 and PLCD1 siRNAs inhibit CREB phosphorylation (Figure 5b). Published studies support the notion that these four genes are components of the EDNRB signaling network upstream of CREB phosphorylation. Serine/threonine-protein kinase TAO1 (TAOK1) activates the p38 MAP kinase pathway through the specific activation of the upstream MKK3 kinase [32]. This signaling pathway activates p38 leading to CREB phosphorylation in melanocytes [33,34]. It also is known that Protein tyrosine kinase 2 beta (PTK2B) activation leads to ERK1/2 activation [35]. In turn, ERK1/2 phosphorylates p90rsk, which phosphorylates CREB [34,36]. Endothelins promote dendrite formation facilitating melanosome transport from melanocytes to keratinocytes [37,38], processes that require extensive actin cytoskeletal reorganization [39,40]. Formin homology 2 domain containing 1 (FHOD1), a protein with several potential PKC phosphorylation sites [41], directly binds to F-actin and plays a role in actin cytoskeleton organization [42] and cell elongation [43]. Additionally, FHOD1 activates ERK inducing changes in gene expression [44]. Our studies

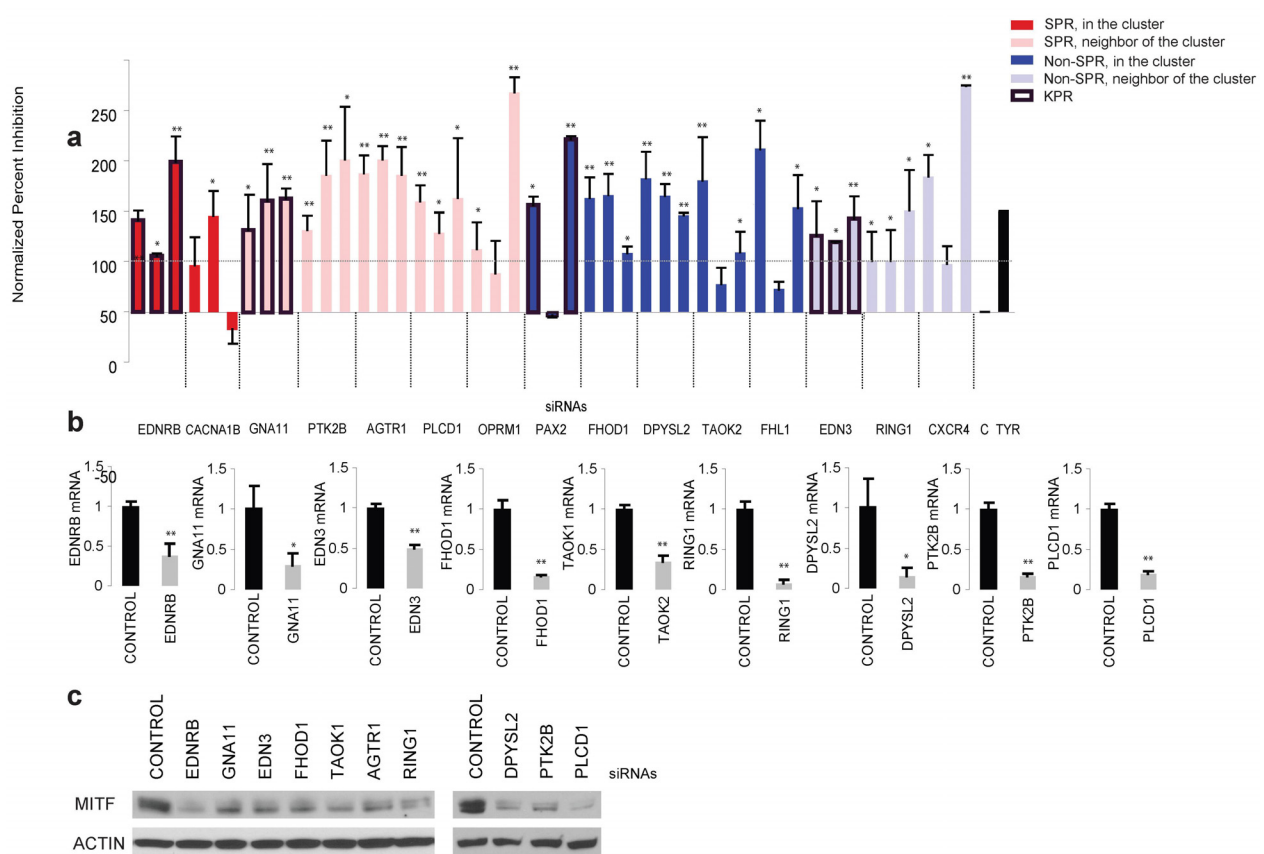


Figure 4 Identification of novel EDNRB network components that impact melanogenesis. (a) Genes from EDNRB network are examined for their impact on pigment production in MNT-1 cells. The impact of each siRNA on pigment production is calculated as described in [14] relative to control (c) and tyrosinase (TYR) siRNA treated cells using a normalized percent inhibition calculation. (b) Ten genes are selected from panel (a) that have > 50% NPI, and are not the result of siRNA off-target effects (2/3 of oligos have > 50% inhibition). The efficacy of protein knockdown for 10 pooled siRNAs directed towards these genes is measured by quantitative RT-PCR at both 24 and 48 hours after transfection. The timepoint where maximum inhibition of expression is observed is reported. AGTR1 mRNA level after siRNA treatment is below the detection limit and is not reported. Control siRNAs are depicted with a black bar, and target siRNAs with a white bar. *, $p < 0.05$. **, $p < 0.01$. (c) Both EDNRB and selected novel EDNRB network components impact the MITF protein levels in MNT-1 cells. MNT-1 cells are transfected with the indicated siRNAs for 96 hours followed by immunoblotting with MITF and ERK antibody as shown.

implicate FHOD1 as a potential player in endothelin mediated actin-cytoskeletal reorganization.

Upon endothelins binding to endothelin receptors of melanocytes, phospholipase C is activated [45] and initiates subsequent activation of protein kinase C and ERK pathways. Phospholipase C delta-1 (PLCD1) hydrolyzes phosphatidylinositol 4,5-bisphosphate (PIP2) to generate two second messengers: diacylglycerol (DG) and inositol 1,4,5-trisphosphate (IP3) [46]. DG mediates the activation of protein kinase C (PKC), and IP3 releases calcium from intracellular stores, which in turns activate ERK [47]. In melanocytes, PLC antagonist U73122 inhibits endothelin-1-induced intracellular calcium rise and ERK phosphorylation [48,49], providing direct evidence that phospholipase C activity impacts endothelin-induced signaling in primary melanocytes. Analysis of gene annotation data reveals that PLCD1 is a phospholipase C

homologue that may function directly downstream of GNA11 (Table 1). As PLC activity impacts EDNRB signaling in melanocytes, we sought to examine whether PLCD1 was the PLC isoform that impacts EDNRB signaling in normal melanocytes. Depletion of PLCD1 in normal melanocytes impacts MITF protein levels (Figure 5c). Additionally, we demonstrate that PLCD1 siRNA inhibits CREB phosphorylation in the context of EDNRB receptor stimulation, consistent with the hypothesis that PLCD1 is upstream of the CREB phosphorylation event. These results demonstrate that some components in our EDNRB network participate in EDNRB signaling in normal and cancer cells (Figure 5d).

In this study, we apply a PPI network topology-based approach that utilizes GDVs to identify novel components of melanogenesis regulatory pathways. Related approaches that detect biological function from PPI net-

Table 1: Annotation of genes identified in EDNRB network.

Symbol	Comments	Motifs	Z-score
EDNRB	Endothelin receptor type B. Mutation causes Hirschsprung disease type 2 (HSCR2) [MIM:600155]	7tm_1	-1.1
GNA11	G-protein activates phospholipase C in endothelin pathway	Gα	-1.9
EDN3	Ligand for endothelin receptor type B	EDN	0.2
PLCD1	Phospholipase produces diacylglycerol and inositol 1,4,5-trisphosphate in endothelin pathway	PH-PLC, C2_2, EFh	-1.5
TAOK1	Kinase activates the p38 MAP kinase pathway in endothelin pathway	SbcC, STKc_TAO	-0.2
PTK2B	Kinase regulates ion channel and activation of the MAP kinase signaling pathway in endothelin pathway	PTKc_FAK, FERM_M. Focal_AT, B41, Pkinase_Tyr	-1.9
AGTR1	Receptor for angiotensin II; defect causes renal tubular dysgenesis (RTD) [MIM:267430]	7tm_1	-1.7
RING1	E3 ubiquitin-protein ligase for histone H2A	RING-finger	0.5
FHOD1	Required for the assembly of F-actin structures	FH, GBD	0.2
DPYSL2	Signaling by class 3 semaphorins and subsequent remodeling of the cytoskeleton	D-HYD	-0.5

Gene Ontology Database is used to assess function and identify conserved domains within the corresponding proteins. Z-scores are calculated based on the initial screen data [14].

work topology rely on simpler network properties such as direct neighbors of nodes and shortest path distances [20,50]. Since none of the 6 SPRs in EDNRB cluster are adjacent in the PPI network, but are at distance three or four from each other, they could not have been topologically clustered together by analyzing only their neighbors or distances in the PPI network. Additionally, as mentioned above, examining only direct neighbors of an SPR is not appropriate for constructing its underlying melanogenesis-related pathway.

Although GDV-based computational method has already been used to demonstrate that topologically similar proteins share common biological properties such as protein function or involvement in cancer [17,18], in this paper, we provide a novel application of the method, namely identifying novel components of biological pathways known to regulate melanogenesis. We use this graph theoretic method to identify proteins with similar topological signatures to known pigment regulators and to construct the corresponding melanogenesis-related sub-

networks. Most importantly, we experimentally validate that the novel components of these melanogenesis-related subnetworks are components of the EDNRB pathway in both pigmented melanoma cells and normal melanocytes.

Conclusions

In this study, we utilize a PPI network topology-based computational approach to identify a set of novel EDNRB pathway components. Using RNAi-based approaches, we validate that some of the proteins in EDNRB network impact melanogenesis, demonstrating that topological clustering approaches can uncover additional components of known regulatory networks. SPRs that cluster with EDNRB have similar impacts on MITF protein levels, on MITF and tyrosinase expression, and on CREB phosphorylation, indicating that they are likely components of the same biological pathway. Validation of PLCD1, a potent regulator of MITF in MNT-1 cells, reveals that novel EDNRB pathway component identified

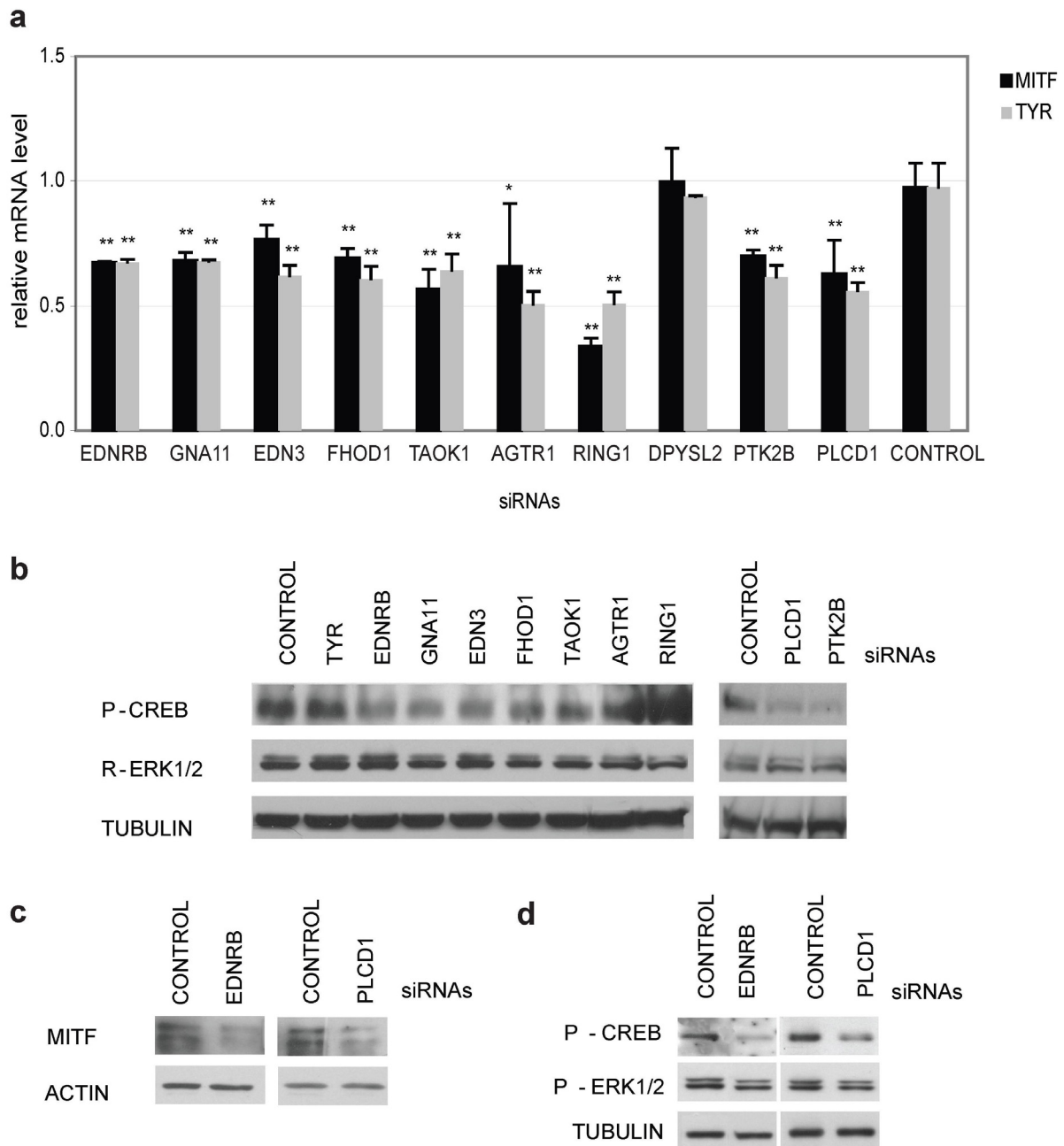


Figure 5 Computationally derived EDNRB network components impact EDNRB signaling through CREB phosphorylation. (a) Novel EDNRB network components impact both tyrosinase and MITF expression. MNT-1 melanoma cells are transfected with pooled siRNAs and relative MITF (black bar) and Tyrosinase (gray bar) expression is measured by quantitative RT-PCR 96 hours after transfection. *, $p < 0.05$. **, $p < 0.01$. (b) Novel components of the EDNRB network impact CREB phosphorylation. Lysates from MNT-1 cells treated with the indicated pooled siRNAs are subjected to immunoblotting with the indicated antibodies. (c) PLCD1 impacts MITF protein levels in melanocytes. Lysates from PLCD1 siRNA transfected melanocytes are subjected to immunoblotting with the indicated antibodies. (d) PLCD1 impacts CREB phosphorylation in normal human melanocytes. Lysates from melanocytes transfected with the indicated siRNAs followed by EDNRB stimulation (treatment with 10 mM Endothelin-1 for 5 minutes) are subjected to immunoblotting with the indicated antibodies.

in MNT-1 cells impact EDNRB signaling in normal melanocytes. Our study demonstrates that integration of PPI network topology-based algorithms with functional genomics datasets is a fruitful method to enhance our

systems-level understanding of biological phenotypes. In the future this method may be used to place targets identified in RNAi screens within the context of known biological pathways that regulate the system under study,

deriving additional relevance from systems-level RNAi datasets.

Methods

Cell culture

MNT-1 melanoma cells were a gift of M. Marks (University of Pennsylvania) and were cultured in DMEM (Invitrogen) with 15% fetal bovine serum (Hyclone), 10% AIM-V medium (Invitrogen), 1xMEM (Invitrogen) and 1 × antibiotic/antimycotic (Invitrogen). Darkly pigmented human neonatal epidermal melanocytes (Cascade Biologics) were cultured in Medium 254 with the melanocyte specific HMGS supplement (Cascade Biologics) and 0.1 mM 3-Isobutyl-1-methylxanthine (IBMX).

Protein clustering via topological similarity measure

In our study, we focus on proteins with more than three interacting partners in the PPI network, since poorly connected proteins are more likely to reside in incomplete parts of PPI networks [17,18]. However, to account for the entire topology of the PPI network, when GDVs are computed, all proteins and interactions in the PPI network are taken into account. There are 5,423 proteins with degrees higher than three in the network, out of which 1,244 are SPRs, and 41 are KPRs contained in the ESPCR database [8]; 10 SPRs are KPRs at the same time. The code for computing GDVs [17] is available in GraphCrunch [51], an open source software tool for large network modeling and analyses.

We perform the GDV-based clustering as follows: for each of the 1,244 SPRs with degrees greater than 3 in the PPI network, we identify a cluster containing that protein and all other proteins in the network having degrees higher than 3 that are topologically similar to it, i.e., that have GDV similarities with the protein of interest above a threshold; thresholds between 90% and 95% have been used previously [17]. We find the highest threshold at which a node is clustered with at least one more node by performing the following: (1) we initially set the signature similarity threshold to 96%; (2) if the SPR for which the cluster is formed is signature-similar with at least one more node at the given threshold, we create the cluster containing these nodes and the SPR; (3) if a protein of interest is not signature-similar with any other protein at a given threshold, we decrease the threshold and repeat steps 2 and 3; (4) we stop the clustering process for a given SPR when its cluster has been formed; we decrease the threshold down to 90% searching for non-empty clusters, but not below 90%; if a protein is not signature-similar with any other protein at the lowest threshold of 90%, we do not form a cluster for that protein. We try to form clusters for all 1,244 SPRs. However, 263 of them are not 90% signature similar to any other nodes in the PPI network. Additional 237 of them cluster only with one other

node. Thus, we analyze clusters of size 3 or more formed for 743 SPRs. The minimum threshold of 90% for signature similarity was chosen because it has been empirically shown that for higher thresholds, only a few small clusters are obtained, indicating too high stringency in signature similarities, whereas for lower thresholds, clusters are very large, indicating a loss of signature similarity [17].

In each cluster formed in this fashion, we measure the enrichment of SPRs. We define the "hit-rate" of a cluster as the percentage of proteins in the cluster that are SPRs, excluding the protein of interest. We also compute the statistical significance of observing a given hit-rate in the cluster, measuring the probability that the cluster is enriched by a given number of SPR proteins purely by chance. This probability (*p*-value) is computed as follows. The total number of proteins in the PPI network with degrees higher than 3 is $N = 5,422$ (excluding the SPR for which the cluster was formed) and there are $S = 1,243$ SPRs with degrees higher than 3 (excluding the SPR for which the cluster was formed). We use the following notation: the size of a cluster of interest is C , excluding the protein for which the cluster was formed; the number of proteins in the cluster that are SPRs is k , excluding the protein for which the cluster was formed. The hit-rate of the cluster is k/C , and the *p*-value for the cluster, i.e., the probability of observing the same or higher hit-rate purely by chance is:

$$p - value = 1 - \sum_{i=0}^{k-1} \frac{\binom{S}{i} \binom{N-S}{C-i}}{\binom{N}{C}}$$

Depending on a method and its application, sensible cut-offs for *p*-values were reported to range from 10^{-2} to 10^{-8} [52]. We find that 26 out of 743 clusters formed for SPRs are enriched with SPRs with *p*-values of SPR enrichment below 0.05. Since we perform statistical testing on 743 clusters, we believe that the reported *p*-values do not need to be corrected for multiple testing.

Given that 26 of our clusters are statistically significantly SPR-enriched at *p*-value threshold of 0.05, we compute the probability of observing 26 statistically significantly SPR-enriched clusters by chance (i.e., statistical significance). For each of the 743 SPRs, we create "random" clusters of the same size as the corresponding GDV-based clusters. Then, we measure statistical significance of SPR enrichment in these random clusters. Since the clusters are random, we repeat the randomization procedure 1,000 times. We find that only in 9 out of the 1,000 runs, 26 or more clusters are statistically significantly enriched with SPRs, leading to empirical (fre-

quency) probability of 0.009 for observing 26 or more statistically significantly SPR-enriched clusters by chance. Furthermore, since the distribution of the number of statistically significantly SPR-enriched random cluster over the 1,000 runs is bell-shaped, we use the formula for computing Z-score to standardize our observation in the data of having 26 statistically significantly SPR-enriched clusters. Then, we use the normal distribution table to compute the p-value corresponding to the resulting Z-score. If we denote by $x = 26$ the raw score to be standardized, by $\mu = 15.45$ the mean of the (random) population, i.e., the average over the 1,000 runs of the number of random clusters that are statistically significantly SPR-enriched, and by $\sigma = 4.03$ the standard deviation over the 1,000 runs, we get Z-score of 2.62. Using the normal distribution table, we find that this Z-score corresponds to the p-value of 0.0044; that is, in this way, we find that the probability of observing 26 or more statistically significantly SPR-enriched clusters at random is lower than 0.0044.

SiRNA transfection

For western blot analysis, 6×10^4 MNT-1 cells were transfected with 75 nM pooled siRNAs using a Dharmafect-2 transfection reagent as previously described [13]. Similarly, 6×10^4 melanocytes were transfected with 12.5 nM pooled siRNAs (two) toward each gene using a HiPerFect transfection reagent as previously described [13]. For pigment measurement, 1×10^4 MNT-1 cells were transfected with 8 nM pooled siRNAs (two siRNAs) using a Dharmafect-2 transfection reagent as described. We performed each transfection in triplicate. For RT-qPCR, we used 4×10^3 MNT-1 cells in the same 96-well format. We obtained pooled siRNAs for tyrosinase from Dharmacon, and all the other siRNAs from Ambion. A list of all siRNA sequences are contained in Additional File 5 Table S3.

Pigment measurement and data normalization

For pigment measurement, we transfected MNT-1 cells with the corresponding siRNA in 96 well plates and incubated them for 120 hours at 37°C/5% CO₂. Subsequently, we removed 100 ul of the medium from each well and added 15 ul of CellTiter-Glo Reagent (CTG) (Promega) to each well according to the manufacturer's protocol. We measured luminescence and absorbance at 405 nm for each well of the 96 well plate using a DTX800 Multimode Detector (Beckman Coulter). We normalized absorbance values with raw luminescence values that are proportional to cell number to determine relative pigment per cell. We calculated a normalized percent inhibition from these values to account for the background absorbance of MNT-1 cells and variability in transfection. Normalized percent inhibition (NPI) = $\frac{(\text{Pigment Index}_{\text{non-targeting control siRNA}} - \text{Pigment Index}_{\text{sample}})}{(\text{Pigment Index}_{\text{non-targeting control}} - \text{Pigment Index}_{\text{tyrosinase siRNA}})} \times 100\%$. We use a student's t-test to calculate the p-values of each sample v.s. non-targeting control.

Immunoblotting

For our immunoblotting experiments, MNT-1 cells 96 hrs post-transfection and melanocytes 144hrs post-transfection were lysed in RIPA buffer supplied with proteases inhibitors cocktail, PMSF and sodium orthovanadate (Santa Cruz Biotechnology). For experiments in melanocytes looking at downstream EDNRB signaling, we treated melanocytes with 10 μ M Endothelin-1 for 5mins. After boiling with sample buffer, we loaded the samples to 4-20% SDS-PAGE and subjected them to western blotting with anti-MITF (C5, Santa Cruz Biotechnology), anti-phospho-ERK1/2 (Cell Signaling Technologies), anti-phospho-CREB (Cell Signaling Technologies), anti-alpha/beta-tubulin (Cell Signaling Technologies) and anti-beta-actin (Cell Signaling Technologies) antibodies.

Quantitative RT-PCR

96hrs after siRNA transfection, we prepared cDNA from MNT-1 cells using a Cells-to-Ct kit (Ambion) according to the manufacturer's protocol. For measurement of siRNA knockdown efficiency, we prepared cDNA from MNT-1 cells 48 hrs after transfection for most of the genes except RING1, FHOD1, TAOK1 at 24 hrs to capture the impact in different mRNA kinetics. We added an aliquot of each cDNA reaction to each Taqman master mix reaction along with the appropriate primer and probe set purchased from Applied Biosystems per the manufacturer's protocol (Applied Biosystems). Primers and probes sequences are listed in Additional File 6 Table S4. We utilized a 7900HT Fast Real-Time PCR System (Applied Biosystems) to determine Ct values. We normalized values by human beta-actin Ct values and analyzed our data using the relative quantification mathematical model (Pfaffl).

Additional material

Additional file 1 Figure S1: (a) All 30 graphlets on 2 to 5 nodes; they contain 73 topologically unique node types, called "automorphism orbits". In a particular graphlet, nodes belonging to the same orbit are of the same shade [52]. **(b)** An illustration of the "Graphlet Degree Vector" (GDV), or a "signature" of node v ; coordinates of a GDV count how many times a node is touched by a particular automorphism orbit, such as an edge (the leftmost panel), a triangle (the middle panel), or a square (the rightmost panel). Hence, the degree is generalized to a GDV [17]. The GDV of node v is presented in the table for orbits 0 to 72: v is touched by 5 edges (orbit 0), end-nodes of 2 graphlets G_1 (orbit 1), etc.

Additional file 2 Table S1: siRNAs from our genome wide siRNA screen with Z-score < -1 or > 1.

Additional file 3 Table S2: Proteins that form the cluster.

Additional file 4 Figure S2: EDNRB cluster obtained by considering its direct neighbors in the PPI network. Unlike the EDNRB network obtained with our GDV-based approach, this network is clearly a star-like network structure centered around EDNRB. This structure is unlikely to represent a biological pathway, since its diameter, defined as the maximum of shortest path distances between all node pairs in the network, is 2, whereas we find that about 93% of real human biological pathways from KEGG [21], when mapped onto the human PPI network, have diameters larger than 2, with the average of 6.24 and the standard deviation of 2.6.

Additional file 5 Table S3: siRNA sequences used in this study.

Additional file 6 Table S4: qPCR probe sequences used in this study.

Abbreviations

RNAi: RNA-mediated interference; siRNA: small interfering RNA; RT-PCR: reverse-transcription polymerase chain reaction; PPI: protein-protein interaction; FG: functional genomics; EDNRB: Endothelin receptor type B; MITF: microphthalmia-associated transcription factor; SPR: screen pigment regulator; KPR: known pigment regulator; GDV: graphlet degree vector; CREB: cAMP response element binding; ERK: extracellular signal-regulated kinase.

Authors' contributions

TM and VM performed the computational data analysis. HH and JA performed biological experiments. AKG and NP conceived of the study. All the authors participated in its design and coordination. AKG, NP and HH drafted the manuscript. All authors read and approved the final manuscript.

Acknowledgements

Anand Ganesan, Hsiang Ho, and Jayavani Aruri were supported by two NIH awards (1K08AR056001-01A1 and 1R03AR057150-01). Nataša Pržulj, Tijana Milenković and Vesna Memišević were supported by the NSF CAREER IIS-0644424 grant.

Author Details

¹Department of Biological Chemistry, University of California, Irvine, CA 92697-1700, USA, ²Department of Computer Science, University of California, Irvine, CA 92697-3435, USA, ³Department of Dermatology, University of California, Irvine, CA 92697-2400, USA and ⁴Department of Computing, Imperial College London SW7 2AZ, UK

Received: 4 November 2009 Accepted: 15 June 2010

Published: 15 June 2010

References

- Lehner B, Lee I: **Network-guided genetic screening: building, testing and using gene networks to predict gene function.** *Brief Funct Genomic Proteomic* 2008, **7**:217-227.
- Lamitina T: **Functional genomic approaches in *C. elegans*.** *Methods Mol Biol* 2006, **351**:127-138.
- Gunsalus KC, Ge H, Schetter AJ, Goldberg DS, Han JD, Hao T, Berriz GF, Bertin N, Huang J, Chuang LS, et al.: **Predictive models of molecular machines involved in *Caenorhabditis elegans* early embryogenesis.** *Nature* 2005, **436**:861-865.
- Lee K, Chuang HY, Beyer A, Sung MK, Huh WK, Lee B, Ideker T: **Protein networks markedly improve prediction of subcellular localization in multiple eukaryotic species.** *Nucleic Acids Res* 2008, **36**:e136.
- Kaplow IM, Singh R, Friedman A, Bakal C, Perrimon N, Berger B: **RNAiCut: automated detection of significant genes from functional genomic screens.** *Nat Methods* 2009, **6**:476-477.
- Echeverri CJ, Beachy PA, Baum B, Boutros M, Buchholz F, Chanda SK, Downward J, Ellenberg J, Fraser AG, Hacohen N, et al.: **Minimizing the risk of reporting false positives in large-scale RNAi screens.** *Nat Methods* 2006, **3**:777-779.
- König R, Zhou Y, Elleder D, Diamond TL, Bonamy GM, Ireland JT, Chiang CY, Tu BP, De Jesus PD, Lilley CE, et al.: **Global analysis of host-pathogen interactions that regulate early-stage HIV-1 replication.** *Cell* 2008, **135**:49-60.
- Bennett DC, Lamoreux ML: **The color loci of mice--a genetic century.** *Pigment Cell Res* 2003, **16**:333-344.
- Slominski A, Tobin DJ, Shibahara S, Wortsman J: **Melanin pigmentation in mammalian skin and its hormonal regulation.** *Physiol Rev* 2004, **84**:1155-1228.
- Levy C, Khaled M, Fisher DE: **MITF: master regulator of melanocyte development and melanoma oncogene.** *Trends Mol Med* 2006, **12**:406-414.
- Raposo G, Marks MS: **Melanosomes--dark organelles enlighten endosomal membrane transport.** *Nat Rev Mol Cell Biol* 2007, **8**:786-797.
- Sulem P, Gudbjartsson DF, Stacey SN, Helgason A, Rafnar T, Magnusson KP, Manolescu A, Karason A, Palsson A, Thorleifsson G, et al.: **Genetic determinants of hair, eye and skin pigmentation in Europeans.** *Nat Genet* 2007, **39**:1443-1452.
- Ganesan AK, Ho H, Bodemann B, Petersen S, Aruri J, Koshy S, Richardson Z, Le LQ, Krasieva T, Roth MG, et al.: **Genome-wide siRNA-based functional genomics of pigmentation identifies novel genes and pathways that impact melanogenesis in human cells.** *PLoS Genet* 2008, **4**:e1000298.
- Peri S, Navarro JD, Kristiansen TZ, Amanchy R, Surendranath V, Muthusamy B, Gandhi TK, Chandrika KN, Deshpande N, Suresh S, et al.: **Human protein reference database as a discovery resource for proteomics.** *Nucleic Acids Res* 2004, **32**:D497-501.
- Stark C, Breitkreutz BJ, Reguly T, Boucher L, Breitkreutz A, Tyers M: **BioGRID: a general repository for interaction datasets.** *Nucleic Acids Res* 2006, **34**:D535-539.
- Radivojac P, Peng K, Clark WT, Peters BJ, Mohan A, Boyle SM, Mooney SD: **An integrated approach to inferring gene-disease associations in humans.** *Proteins* 2008, **72**:1030-1037.
- Milenković T, Pržulj N: **Uncovering Biological Network Function via Graphlet Degree Signatures.** *Cancer Inform* 2008, **6**:257-273.
- Milenković TVM, Ganesan AK, Pržulj N: **Systems-level cancer gene identification from protein interaction network topology applied to melanogenesis-related functional genomics data.** *J R Soc Interface* 2010.
- Motulsky H: *Intuitive Biostatistics* Oxford University Press, New York; 1995.
- Sharan R, Ulitsky I, Shamir R: **Network-based prediction of protein function.** *Mol Syst Biol* 2007, **3**:88.
- Kanehisa M, Goto S: **KEGG: kyoto encyclopedia of genes and genomes.** *Nucleic Acids Res* 2000, **28**:27-30.
- Shanske A, Ferreira JC, Leonard JC, Fuller P, Marion RW: **Hirschsprung disease in an infant with a contiguous gene syndrome of chromosome 13.** *Am J Med Genet* 2001, **102**:231-236.
- Hofstra RM, Osinga J, Tan-Sindhunata G, Wu Y, Kamsteeg EJ, Stulp RP, van Ravenswaaij-Arts C, Majoor-Krakauer D, Angrist M, Chakravarti A, et al.: **A homozygous mutation in the endothelin-3 gene associated with a combined Waardenburg type 2 and Hirschsprung phenotype (Shah-Waardenburg syndrome).** *Nat Genet* 1996, **12**:445-447.
- Van Raamsdonk CD, Fitch KR, Fuchs H, de Angelis MH, Barsh GS: **Effects of G-protein mutations on skin color.** *Nat Genet* 2004, **36**:961-968.
- McGill GG, Horstmann M, Widlund HR, Du J, Motyckova G, Nishimura EK, Lin YL, Ramaswamy S, Avery W, Ding HF, et al.: **Bcl2 regulation by the melanocyte master regulator Mitf modulates lineage survival and melanoma cell viability.** *Cell* 2002, **109**:707-718.
- Sato-Jin K, Nishimura EK, Akasaka E, Huber W, Nakano H, Miller A, Du J, Wu M, Hanada K, Sawamura D, et al.: **Epistatic connections between microphthalmia-associated transcription factor and endothelin signaling in Waardenburg syndrome and other pigmentary disorders.** *FASEB J* 2008, **22**:1155-1168.
- Murisier F, Beerermann F: **Genetics of pigment cells: lessons from the tyrosinase gene family.** *Histol Histopathol* 2006, **21**:567-578.
- Hou L, Pavan WJ, Shin MK, Arnheiter H: **Cell-autonomous and cell non-autonomous signaling through endothelin receptor B during melanocyte development.** *Development* 2004, **131**:3239-3247.
- Motagal MA, Lukewich MK, Chisholm SP, Neshat S, Lomax AE: **Tumour necrosis factor alpha activates nuclear factor kappaB signalling to reduce N-type voltage-gated Ca²⁺ current in postganglionic sympathetic neurons.** *J Physiol* 2009, **587**:2623-2634.
- Barlow A, de Graaff E, Pachnis V: **Enteric nervous system progenitors are coordinately controlled by the G protein-coupled receptor EDNRB and the receptor tyrosine kinase RET.** *Neuron* 2003, **40**:905-916.
- Hoek K, Rimm DL, Williams KR, Zhao H, Ariyan S, Lin A, Kluger HM, Berger AJ, Cheng E, Trombetta ES, et al.: **Expression profiling reveals novel pathways in the transformation of melanocytes to melanomas.** *Cancer Res* 2004, **64**:5270-5282.
- Yustein JT, Xia L, Kahlenburg JM, Robinson D, Templeton D, Kung HJ: **Comparative studies of a new subfamily of human Ste20-like kinases: homodimerization, subcellular localization, and selective activation of MKK3 and p38.** *Oncogene* 2003, **22**:6129-6141.
- Saha B, Singh SK, Sarkar C, Bera R, Ratha J, Tobin DJ, Bhadra R: **Activation of the Mitf promoter by lipid-stimulated activation of p38-stress signalling to CREB.** *Pigment Cell Res* 2006, **19**:595-605.
- Tada A, Pereira E, Beitner-Johnson D, Kavanagh R, Abdel-Malek ZA: **Mitogen- and ultraviolet-B-induced signaling pathways in normal human melanocytes.** *J Invest Dermatol* 2002, **118**:316-322.
- Lev S, Moreno H, Martinez R, Canoll P, Peles E, Musacchio JM, Plowman GD, Rudy B, Schlessinger J: **Protein tyrosine kinase PYK2 involved in Ca²⁺-induced regulation of ion channel and MAP kinase functions.** *Nature* 1995, **376**:737-745.

36. Bohm M, Moellmann G, Cheng E, Alvarez-Franco M, Wagner S, Sassone-Corsi P, Halaban R: **Identification of p90RSK as the probable CREB-Ser133 kinase in human melanocytes.** *Cell Growth Differ* 1995, **6**:291-302.
37. Demunter A, De Wolf-Peeters C, Degreef H, Stas M, van den Oord JJ: **Expression of the endothelin-B receptor in pigment cell lesions of the skin. Evidence for its role as tumor progression marker in malignant melanoma.** *Virchows Arch* 2001, **438**:485-491.
38. Hara M, Yaar M, Gilchrist BA: **Endothelin-1 of keratinocyte origin is a mediator of melanocyte dendricity.** *J Invest Dermatol* 1995, **105**:744-748.
39. Busca R, Bertolotto C, Abbe P, Englaro W, Ishizaki T, Narumiya S, Boquet P, Ortonne JP, Ballotti R: **Inhibition of Rho is required for cAMP-induced melanoma cell differentiation.** *Mol Biol Cell* 1998, **9**:1367-1378.
40. Hata K, Mukaiyama T, Tsujimura N, Sato Y, Kosaka Y, Sakamoto K, Hori K: **Differentiation-inducing activity of lupane triterpenes on a mouse melanoma cell line.** *Cytotechnology* 2006, **52**:151-158.
41. Westendorf JJ, Mernaugh R, Hiebert SW: **Identification and characterization of a protein containing formin homology (FH1/FH2) domains.** *Gene* 1999, **232**:173-182.
42. Takeya R, Sumimoto H: **Fhos, a mammalian formin, directly binds to F-actin via a region N-terminal to the FH1 domain and forms a homotypic complex via the FH2 domain to promote actin fiber formation.** *J Cell Sci* 2003, **116**:4567-4575.
43. Gasteier JE, Schroeder S, Muranyi W, Madrid R, Benichou S, Fackler OT: **FHOD1 coordinates actin filament and microtubule alignment to mediate cell elongation.** *Exp Cell Res* 2005, **306**:192-202.
44. Boehm MB, Milius TJ, Zhou Y, Westendorf JJ, Koka S: **The mammalian formin FHOD1 interacts with the ERK MAP kinase pathway.** *Biochem Biophys Res Commun* 2005, **335**:1090-1094.
45. Tanaka H, Moroi K, Iwai J, Takahashi H, Ohnuma N, Hori S, Takimoto M, Nishiyama M, Masaki T, Yanagisawa M, et al.: **Novel mutations of the endothelin B receptor gene in patients with Hirschsprung's disease and their characterization.** *J Biol Chem* 1998, **273**:11378-11383.
46. Stallings JD, Tall EG, Pentyala S, Rebecchi MJ: **Nuclear translocation of phospholipase C-delta1 is linked to the cell cycle and nuclear phosphatidylinositol 4,5-bisphosphate.** *J Biol Chem* 2005, **280**:22060-22069.
47. Kobayashi A, Hachiya A, Ohuchi A, Kitahara T, Takema Y: **Inhibitory mechanism of an extract of *Althaea officinalis* L. on endothelin-1-induced melanocyte activation.** *Biol Pharm Bull* 2002, **25**:229-234.
48. Imokawa G, Kobayashi T, Miyagishi M: **Intracellular signaling mechanisms leading to synergistic effects of endothelin-1 and stem cell factor on proliferation of cultured human melanocytes. Cross-talk via trans-activation of the tyrosine kinase c-kit receptor.** *J Biol Chem* 2000, **275**:33321-33328.
49. Kang HY, Kang WH, Lee C: **Endothelin-B receptor-mediated Ca2+ signaling in human melanocytes.** *Pflugers Arch* 1998, **435**:350-356.
50. Pržulj N, Milenković T: **Computational Methods for Analyzing and Modeling Biological Networks, a chapter in "Biological Data Mining".** Edited by: Jake Chen, Stefano Lonardi. Chapman & Hall/CRC; 2009.
51. Milenković T, Lai J, Pržulj N: **GraphCrunch: a tool for large network analyses.** *BMC Bioinformatics* 2008:70 [<http://www.ics.uci.edu/~bio-nets/graphcrunch/>].
52. King AD, Pržulj N, Jurisica I: **Protein complex prediction via cost-based clustering.** *Bioinformatics* 2004, **20**:3013-3020.

doi: 10.1186/1752-0509-4-84

Cite this article as: Ho et al., Protein interaction network topology uncovers melanogenesis regulatory network components within functional genomics datasets *BMC Systems Biology* 2010, **4**:84

Submit your next manuscript to BioMed Central and take full advantage of:

- Convenient online submission
- Thorough peer review
- No space constraints or color figure charges
- Immediate publication on acceptance
- Inclusion in PubMed, CAS, Scopus and Google Scholar
- Research which is freely available for redistribution

Submit your manuscript at
www.biomedcentral.com/submit

