

# UCSF

## UC San Francisco Previously Published Works

### Title

A zebrafish model of foxe3 deficiency demonstrates lens and eye defects with dysregulation of key genes involved in cataract formation in humans.

### Permalink

<https://escholarship.org/uc/item/36z959s2>

### Journal

Human Genetics, 137(4)

### Authors

Krall, M

Htun, S

Anand, D

et al.

### Publication Date

2018-04-01

### DOI

10.1007/s00439-018-1884-1

Peer reviewed



Published in final edited form as:

*Hum Genet.* 2018 April ; 137(4): 315–328. doi:10.1007/s00439-018-1884-1.

## A zebrafish model of *foxe3* deficiency demonstrates lens and eye defects with dysregulation of key genes involved in cataract formation in humans

M Krall<sup>1</sup>, S Htun<sup>1</sup>, D Anand<sup>2</sup>, D Hart<sup>3</sup>, SA Lachke<sup>2,4,\*</sup>, and A Slavotinek<sup>1,\*</sup>

<sup>1</sup>Department of Pediatrics, University of California San Francisco, San Francisco, CA, USA

<sup>2</sup>Department of Biological Sciences, University of Delaware, Newark, DE, USA

<sup>3</sup>Department of Biochemistry and Biophysics. Cardiovascular Research Institute, University of California San Francisco, San Francisco, CA, USA

<sup>4</sup>Center for Bioinformatics and Computational Biology, University of Delaware, Newark, DE, USA

### Abstract

The Forkhead box E3 (*FOXE3*) gene encodes a transcription factor with a forkhead/winged helix domain that is critical for development of the lens and anterior segment of the eye. Monoallelic and biallelic deleterious sequence variants in *FOXE3* cause aphakia, cataracts, sclerocornea and microphthalmia in humans. We used Clustered Regularly interspaced short palindromic repeats/Cas9 injections to target the *foxe3* transcript in zebrafish in order to create an experimental model of loss of function for this gene. Larvae that were homozygous for an indel variant, c. 296\_300delTGCAG, predicting p.(Val99Alafs\*2) demonstrated severe eye defects, including small or absent lenses and microphthalmia. The lenses of the homozygous *foxe3* indel mutants showed more intense staining with z1-1 antibody compared to control lenses, consistent with increased lens fiber cell differentiation. Whole genome transcriptome analysis (RNA-Seq) on RNA isolated from wildtype larvae and larvae with eye defects that were putative homozygotes for the *foxe3* indel variant found significant dysregulation of genes expressed in the lens and eye whose orthologues are associated with cataracts in human patients, including *cryba2a*, *cryba111*, *mipa* and *hsf4*. We also noted upregulation of *Igsn* and *crygmx12* and downregulation of *fmodb* and *cx43.4*, genes that are expressed in the zebrafish lens, but that are not yet associated with an eye phenotype in humans. These findings demonstrate that this new zebrafish *foxe3* mutant model is highly relevant to the study of the gene regulatory networks conserved in vertebrate lens and eye development.

\*To whom correspondence should be addressed: Division of Genetics, Department of Pediatrics, University of California San Francisco., Room RH381C, 1550 4<sup>th</sup> St, San Francisco, CA, USA 94143-2711, Phone: 415 514 1783, Fax: 415 476 9305, anne.slavotinek@ucsf.edu.

Co-corresponding author

ORCID ID: 0000-0001-7053-2449

### Compliance with Ethical Standards

All procedures performed in studies involving animals were in accordance with the ethical standards of the institution or practice at which the studies were conducted. This article does not contain any studies with human participants performed by any of the authors. None of the authors have potential conflicts of interest to disclose.

## Keywords

*foxe3*; aphakia; cataracts; microphthalmia; CRISPR/Cas9 and eye defects

---

## Introduction

The Forkhead box E3 (*FOXE3*) gene (MIM 601094) encodes a forkhead/winged helix containing, DNA-binding transcription factor that is critical for normal development of the lens and anterior segment of the eye (Blixt et al. 2000; Brownell et al. 2000; Ormestad et al. 2002; Shi et al. 2006; Medina-Martinez et al. 2005). Biallelic, deleterious sequence variants in *FOXE3* cause severe disruption to morphogenesis of the lens and anterior segment of the eye in humans and affect up to 2.5% of patients with eye defects (Williamson and FitzPatrick 2014). Defects are frequently bilateral and typically comprise aphakia, sclerocornea and microphthalmia, although anterior segment dysgenesis, congenital cataracts, aniridia and coloboma of the optic disc have also been observed (Williamson and FitzPatrick 2014; Semina et al. 2001; Gould and John 2002; Valleix et al 2006; Iseri et al. 2009; Reis et al. 2013; Islam et al. 2015; Ullah et al. 2016; Chen et al. 2017; Saboo et al. 2017). Patients with *FOXE3* mutations can also develop glaucoma (Semina et al. 2001; Gould and John 2002; Islam et al. 2015; Nischal et al. 2015; Anand et al. in press). Heterozygous, deleterious variants in *FOXE3* can also cause eye defects, including anterior segment dysgenesis with posterior embryotoxon, congenital cataracts, Peters anomaly, microphthalmia, microcornea and iris colobomas (Williamson and FitzPatrick 2014; Semina et al. 2001; Gould and John 2002; Iseri et al. 2009; Brémond-Gignac et al. 2010; Doucette et al. 2011; Reis et al. 2013; Islam et al. 2015; Anand et al. 2018). The study of *FOXE3* is thus highly relevant to the pathogenesis of human eye defects.

*Foxe3* is highly conserved, with ocular expression in many vertebrates (Blixt et al. 2000; Brownell et al. 2000; Blixt et al. 2007; Medina-Martinez and Jamrich 2007; Anand et al. 2018). In the mouse, onset of *Foxe3* expression is coincident with lens induction and formation of the lens placode at embryonic day (E) 9.0 to E9.5 (Blixt et al. 2000; Brownell et al. 2000; Medina-Martinez and Jamrich 2007). Expression remains present in the lens vesicle until E12.5, when *Foxe3* activity persists in the proliferative and undifferentiated cells of the anterior epithelium of the lens, but is lost from the differentiating fibers of the lens (Brownell et al. 2000; Medina-Martinez and Jamrich 2007). The Dysgenetic lens (*dy1*) mouse has two, spontaneous missense mutations in the DNA-binding domain of *Foxe3* (p.Phe93Leu and p.Phe98Ser) that impair the ability of *Foxe3* to bind to DNA and result in loss of function (Ormestad et al. 2002). Mice that are homozygous for the *dy1* allele have smaller lenses, cataracts, failure of the lens vesicle to close, and the anterior lens epithelium does not separate from the cornea (Brownell et al. 2000; Medina-Martinez and Jamrich 2007). Apoptosis is increased in the *dy1* mutant lens compared to wildtype lenses at E14.5, implying that the lens epithelial cells in *dy1* mutant mice are eliminated by apoptosis (Blixt et al., 2000). In a separate murine model, a null mouse with targeted disruption of both *Foxe3* alleles (*Foxe3<sup>tm/tm</sup>*) showed premature cessation of proliferation of the cells from the anterior lens epithelium and the mice had smaller lenses with failure of the anterior lens epithelium to separate from the cornea (Medina-Martinez et al. 2005). Lastly, the Rinshoken

cataract (rct) mouse that is homozygous for a 22 basepair (bp) deletion in a cis-regulatory element upstream of *Foxe3* had mild microphthalmia, congenital cataracts and severe degeneration of the lens fibers due to reduced *Foxe3* expression (Wada et al. 2011).

The zebrafish lens placode increases in cell number through a delamination process and does not undergo invagination, but overall the development of the lens and expression of corresponding gene regulatory networks (GRNs) are also highly conserved in this species (Cvekl and Zhang 2017). In *Danio rerio*, *foxe3* was detected in the ocular lens from 18–24 hours post fertilization (hpf), corresponding to the time of lens placode induction and the start of primary lens cell differentiation. Expression remained present in the lens epithelial cells at 31 hpf (Shi et al. 2006; Kuang et al. 2016). *foxe3* knockdown with antisense morpholinos (MOs) resulted in larvae with microphthalmia and reduced pupillary size compared to wildtype larvae and a minority of morphants had complete absence of the pupil (Shi et al. 2006; Swindell et al. 2008). The morphant larvae also had smaller lenses with multilayered epithelial cells and abnormal lens fiber cells (Shi et al. 2006). Interestingly, co-injection of a MO targeting *p53* was able to partially rescue defects in aortic arch assembly in *foxe3* knockdown zebrafish (Kuang et al. 2016).

Despite these existing animal models of decreased *foxe3* function, little is understood about the GRNs conserved in vertebrate lens formation and the perturbations to such GRNs that result from *foxe3* deficiency. The mature lens is composed of an anterior monolayer of lens epithelial cells and a posterior fiber cell compartment comprising the bulk of the lens (Cvekl and Zhang 2017; Wride 2011). As the lens fibers differentiate, cell proliferation ceases, and lens-specific proteins that are markers of lens differentiation are synthesized, including crystallins and major intrinsic protein of lens fibers (MIPs/aquaporins) (Blixt et al. 2000; Wride 2011; Kuang et al. 2016). Previous work has shown that *dy1* mutant mice have increased  $\alpha$ -crystallin expression in the anterior lens epithelium compared to control mice at E15.0, but there is no difference in  $\alpha$ -crystallin expression in fiber cells (Brownell et al. 2000).  $\beta$ -crystallin expression is also advanced in the *dy1* lens, with expression extending into the anterior epithelial cells of the lens (Brownell et al. 2000). Previous studies with a mouse model of *Foxe3* over-expression in lens fiber cells noted downregulation of genes associated with fiber cell differentiation and upregulation of genes associated with the anterior epithelium of the lens (Medina-Martinez and Jamrich 2007; Sorokhina et al. 2011). Thus, previous research is consistent with a role for *foxe3* in negatively regulating fiber differentiation in the lens, with absence of *foxe3* potentially upregulating fiber differentiation. However, the GRNs controlling lens development and fiber differentiation are still incompletely understood. We used Clustered Regularly Interspaced Short Palindromic Repeats (CRISPR)/Cas9 to create an *in vivo* animal model of decreased *foxe3* function by targeting the protein forkhead domain in zebrafish. We then performed whole genome transcriptome analysis (RNA-Seq) to elucidate the GRNs influenced by *foxe3* function in vertebrates, with the goal of better understanding the effects of deficiency of this gene on lens and eye development.

## Materials and Methods

All animal experiments were performed under a protocol approved by the Institute for Animal Care and Use Committee (IACUC) at UCSF (AN108657-02C). EKW strain zebrafish were maintained at 28°C on a 14 hour (h) light/10 h dark cycle.

### Clustered regularly interspaced short palindromic repeats (CRISPR)/Cas9 to target *foxe3*

We used a modification of previously described methods (Talbot and Amacher 2014). We designed a CRISPR small guide (sg)RNA targeting the forkhead domain of *foxe3* (Table S1). We co-injected sgRNA and Cas9 protein into wildtype zebrafish eggs at the one cell stage and used a T7 assay and/or Sanger sequencing at 24–48 hpf to assess mutagenesis in batches of 10–20 larvae (for primers, see Table S2). F0 larvae with indel mutations were raised and fin-clipped at 6–8 weeks of age in batches of 10–20 larvae for Sanger sequencing to determine the exact indel variants present. We selected three F0 founders with small indels introducing a frameshift or eliminating a splice site in *foxe3*, thus predicting premature protein truncation and nonsense-mediated decay. These founder fish were outcrossed to wildtype *Danio rerio* and the F1 progeny were grown and genotyped to identify fish with germline transmission of the indel variants. F1 fish that were heterozygotes for indel variants in *foxe3* were incrossed to obtain homozygous or compound heterozygous, F2 larvae with biallelic *foxe3* mutations. From the three F0 founder fish that we raised, we selected male and female fish that were heterozygous for the c.296\_300delTGCAG variant in *foxe3* (Table S3) and these fish were used for subsequent incrosses and experiments. Larvae from incrosses of c.296\_300delTGCAG fish were studied at 3 to 6 days post fertilization (dpf) for the ocular findings previously observed in patients with *FOXE3* mutations and animal models of *Foxe3* and *foxe3* loss of function. We were not able to examine the eyes of juveniles or adults, as the fish do not survive in the zebrafish nursery system, possibly due to difficulty competing for food compared to wildtype and heterozygous larvae with normal vision. Eye size and lens morphology were measured using light microscopy. Larvae with eye defects were photographed and then genotyped by Sanger sequencing to confirm homozygosity for the *foxe3* indel variants. For immunohistochemistry, larvae were fixed in 4% paraformaldehyde, washed with phosphate buffered saline (PBS) and placed in 25% (w:v) sucrose and then 35% (w:v) sucrose. Blocks were made and sectioned according to standard techniques. Sections were dried overnight and stored at –80°C. Sections were washed three times in PBS with Tween 20 (PBST) and incubated in blocking buffer containing 4% normal goat serum (v:v), 2% normal sheep serum and 0.2% Tween in PBS for 4 h at 4°C. Slides were incubated with a 1 in 500 dilution of z1-1 primary antibody (Zebrafish International Resource Center; <https://zebrafish.org/>) in blocking buffer overnight at 4°C. Sections were then washed in PBST and incubated with antimouse IgG labeled with Texas red (M32017, Invitrogen) as secondary antibody for 4 h at 4°C. Sections were mounted with antifade mounting medium containing 4,6-Diamidino-2-phenylindole (DAPI; Vectashield, Vectorlabs) as a counterstain and imaged with a fluorescent microscope.

### **Injections of wildtype *foxe3* mRNA to rescue the phenotype of homozygous, *foxe3* indel mutant larvae**

To examine the ability of injections of wildtype *foxe3* mRNA to rescue the eye phenotype observed in incrosses of heterozygous, *foxe3* indel fish, we amplified the single isoform, full-length *foxe3* transcript (for primers, see Table S4). Capped and polyadenylated *foxe3* mRNA was prepared as previously described (mMessage mMachine® T7 Ultra kit; ThermoFischerScientific) (Chao et al 2010). We incrossed heterozygous *foxe3* indel fish and injected mRNA at concentrations of 0, 6.25 ng/μl and 12.5 ng/μl into eggs at the 1–4 cell stage. Larvae were incubated and scored for eye defects at 3 dpf as above.

### **Quantitative reverse transcriptase-polymerase chain reaction (qRT-PCR) to examine *dnajb1* transcription in larvae with eye defects from incrosses of heterozygous, *foxe3* indel fish**

We performed experiments to examine the effects of reduced *foxe3* expression on *dnajb1* transcription (Khan et al 2016). After designing gene-specific primers for *dnajb1a* and *dnajb1b* (Table S5), we obtained total RNA (Qiagen RNeasy kit) at 3 dpf from wildtype EKW larvae and larvae with eye defects selected from a heterozygous, *foxe3* indel incross as described above. RNA was DNase treated and cDNA was synthesized with the SuperScript III First-Strand Synthesis System (Invitrogen). Reactions were run on an ABI Prism 7500 sequence detection system and data were analyzed according to the Ct method using *gapdh* (NM\_001115114.1) or *eef1a111* (NM\_131263.1) as an internal control according to previous methods (Wu et al 2015).

### **Whole genome transcriptome analysis (RNA-Seq) to determine differential gene expression between wildtype larvae and incrossed, *foxe3* indel larvae with eye defects**

To investigate the effects of reduced *foxe3* function on gene transcription, total RNA was extracted from pools of 20 whole-larvae at 3 dpf using the GeneJET RNA Purification Kit; we extracted from three biological replicates of wildtype EKW (control) larvae and 3 biological replicates of larvae from an incross of heterozygous *foxe3* indel fish. From the indel incross, only larvae with aberrant eyes and lenses (putative homozygotes) were used for RNA extraction. We assessed RNA quality and quantity prior to making cDNA and preparing libraries for sequencing. RNA quality was reviewed with a bioanalyzer (2100 Bioanalyzer, Agilent) and libraries were prepared with an Ovation® RNA-seq system V2 kit (NuGEN). With this method, total RNA was reverse transcribed to synthesize first-strand cDNA using a combination of random hexamers and a poly-T chimeric primer. The RNA template was then partially degraded by heating and the second strand cDNA was synthesized using DNA polymerase. The double-stranded DNA was then amplified using single primer isothermal amplification (SPIA). SPIA is a linear cDNA amplification process in which RNase H degrades RNA in DNA/RNA heteroduplex at the 5'-end of the double-stranded DNA, after which the SPIA primer binds to the cDNA and the polymerase starts replication at the 3'-end of the primer by displacement of the existing forward strand. Random hexamers were then used to amplify the second-strand cDNA linearly. Finally, libraries from the SPIA-amplified cDNA were made using the Ultralow DR library kit (NuGEN). The RNA-seq libraries were analyzed for quality and primer dimers by

bioanalyzer and quantified by qPCR (KAPA) prior to sequencing. High-throughput sequencing was done using SE (single-end) 50 lane(s) on a HiSeq 4000 instrument (Illumina). The datasets were deposited in NCBI GEO (GEO#).

### Analysis of *foxe3* indel and wildtype larvae RNA-Seq datasets

The quality of raw single-end reads of RNA-Seq dataset was tested by FastQC (<http://www.bioinformatics.babraham.ac.uk/projects/fastqc/>) to evaluate the per-base sequence quality, quality scores, sequence length distribution and overrepresented adapter/primer sequences. Based on the obtained scores data trimming and clipping was performed using “Timmomatic” (Bolger et al 2014) and aligned against the zebrafish reference genome (GRCz10/danRer7) using a fast splice junction mapper TopHat v2.0.9 (Trapnell et al 2009). Alignment results were then processed using Cufflinks v2.1.1<sup>34</sup> to assemble transcripts and measure the relative abundances. Cuffdiff<sup>34</sup> was used to calculate differentially expressed genes using the genome aligned BAM files from TopHat and merged assembly generated by Cuffmerge (Trapnell et al 2009). Statistically significant differentially expressed genes (DEGs) with  $\log_2$  (fold change) greater than  $\pm 0.5$  with  $p$ -value  $< 0.05$  and the mean Fragments Per Kilobase of Exon Per Million Fragments Mapped (FPKM)  $> 1$  in all datasets were identified by comparing *foxe3* indel mutant with wildtype control datasets using an in house Python script. Principal component analysis (PCA) was performed on global gene expression to determine the relatedness between individual replicates of wildtype and mutant datasets. DAVID v6.8 (Database for Annotation, Visualization and Integrated Discovery) (Huang et al 2009) was used to investigate biologically relevant functional clustering of DEGs in *foxe3* indel mutant datasets. The results for enriched gene ontology (GO) for DEGs are presented as bar plots. We also performed comparative analysis of the DEGs identified in the *foxe3* indel mutant RNA-seq data with previously reported microarray data (GSE9711) from transgenic mouse lenses over-expressing Foxe3 in fiber cells under the control of Cryaa-promoter (Landgren et al. 2008). In addition, we also performed comparative analysis of *foxe3* indel mutant DEGs (1.5-fold up- or down-regulated) with genes exhibiting enriched expression in mouse embryonic day (E)12.5 lens according to iSyTE (Lachke et al. 2012 IOVS, Kakarana et al. 2018 Nucl. Acid. Res.).

### Quantitative reverse transcriptase-polymerase chain reaction (qRT-PCR) to verify RNA-Seq results

We used qRT-PCR to validate the altered expression between wildtype and *foxe3* indel larvae from the RNA-Seq experiments. For these studies, we used the same RNA samples that were previously submitted for RNA-Seq analysis. 1 ng cDNA was amplified using Universal SybrGreen mastermix containing Rox (Roche) and gene specific primers (Tables S5 and S6) at final concentrations of 2.5  $\mu$ M. Reactions were run on a StepOne cycler (Thermo FischerScientific) and analyzed with StepOne™ Software and ExpressionSuite software (Thermo Fisher Scientific) according to the Ct method. We used *gapdh* or *eef1a1ll* as internal control genes as above. All experiments were performed on the three biological replicates from wildtype EKW (control) larvae or from the incrossed *foxe3* indel larvae and each reaction was run in triplicate.

## Results

### Clustered regularly interspaced short palindromic repeats (CRISPR)/Cas9 targeting *foxe3*

We used CRISPR/Cas9 to create three indel variants in *foxe3* in independent, wildtype F0 zebrafish (Fig. S1). All of the variants predicted loss of function for the one isoform of the zebrafish gene (Table S3). We studied larvae that were homozygous for the indel variant c. 296\_300delTGCAG in *foxe3*. These larvae demonstrated an ocular phenotype, with reduced eye size and small, deformed or absent lenses (Fig. 1). The *foxe3* phenotype followed an autosomal recessive inheritance pattern, with defective lens formation present in 17/57 (29.8%) and 32/134 (23.9%) larvae at 3 dpf in a total of two independent crosses of fish that were heterozygous for the *foxe3* indel. Penetrance was directly verified by sequencing eight fish with aberrant lens formation and eight fish with normal-appearing eyes by light microscopy at 6 dpf. All of the larvae (8/8) with abnormal lenses were homozygous for the *foxe3* frameshift indel, while 6/8 fish with normal appearing eyes were heterozygous for the indel and 2/8 were wildtype, indicating that the phenotype is highly penetrant. The eye findings were visible with light microscopy from 3 dpf and the indel *foxe3* mutant larvae appeared otherwise normal externally (Fig. 1). The phenotype observed was similar to that previously described with antisense MOs targeting *foxe3* that produced larvae with small lenses (Shi et al 2006; Swindell et al 2008). A comparison of eye diameter and eye diameter divided by body length for wildtype larvae and larvae with eye defects that were putative homozygotes for the *foxe3* indel mutation showed a significant decrease in eye size, consistent with microphthalmia, in the mutant larvae for both measurements at 6 dpf (Fig. 2). We also used zl-1 antibody to detect the effects of reduced *foxe3* expression on lens fiber protein and showed increased staining in the smaller lenses of the *foxe3* indel mutant larvae compared to wildtype controls (Fig. 3). As zl-1 stains differentiating lens fibers (Greiling et al 2010), this result is consistent with increased fiber cell differentiation in *foxe3* indel mutant larvae compared to wildtype controls.

### Injections of wildtype *foxe3* mRNA to rescue the phenotype of *foxe3* indel mutant larvae

To demonstrate that the CRISPR/Cas9 injections targeted the *foxe3* gene, we attempted phenotypic rescue by injecting full length, wildtype *Danio rerio foxe3* mRNA into the eggs obtained from incrosses of heterozygous, *foxe3* indel fish. Without injection of mRNA, the heterozygous incrosses could typically be expected to result in approximately 25% larvae with eye defects when scored by light microscopy at 3 dpf due to the autosomal recessive inheritance of the phenotype and the high penetrance of the ocular findings as described above. However, with RNA injections of 12.5 ng/μl, the proportion of larvae manifesting eye defects decreased to 18%, indicating partial rescue, although this difference was not statistically significant (Table S7). We did not attempt injections of higher concentrations of RNA due to toxicity observed at this dose (data not shown). The partial rescue and the similarity in phenotype between larvae injected with antisense MOs targeting *foxe3* and our homozygous *foxe3* indel mutant fish implies that the ocular phenotype that we observed was due to disruption of *foxe3*.



### qRT-PCR to examine expression of *dnajb1a* and *dnajb1b* in homozygous, *foxe3* indel mutant larvae

We first performed qRT-PCR to examine the expression of *dnajb1a* and *dnajb1b* in the *foxe3* indel mutant larvae with eye defects due to previously published results that showed downregulation of DNAJB1 expression in human cells with wildtype *FOXE3* compared to cells with truncated *FOXE3* after whole transcriptome analysis, implying that *FOXE3* downregulates *DNAJB1* (Khan et al 2016). The qRT-PCR results for *dnajb1a* and *dnajb1b* showed no statistically significant expression differences between the *foxe3* indel mutants with eye defects and wildtype fish. This result is not consistent with the relative upregulation observed in cells with truncated *FOXE3* compared to cells with wildtype *FOXE3* (Khan et al 2016), that suggested that *dnajb1b* is an important downstream effector of *foxe3* in the zebrafish lens. The qRT-PCR results also confirmed reduced *foxe3* expression in the *foxe3* indel mutants with eye defects, compared to wildtype larvae, although there appeared to be residual *foxe3* transcription. We were unable to obtain a suitable antibody to perform Western blotting to confirm loss of function of *foxe3* in the larvae with eye defects.

### Whole genome transcriptome analysis (RNA-Seq) to determine differential gene expression between wildtype larvae and incrossed, *foxe3* indel larvae with eye defects

To better understand the function of *foxe3* expression in the lens, we performed whole genome RNA-Seq using whole larvae from wildtype controls and larvae with eye defects from a *foxe3* indel incross. In total, 255,880,576 single end reads were generated from three replicates each for control and mutant. Of these, 199,380,411 mapped to the zebrafish reference genome (Table 1). PCA analysis demonstrated that the *foxe3* indel mutant datasets clustered distinctly compared to wildtype control (Fig. 5A). Using a  $\log_2$  (fold change) cutoff of greater than  $\pm 0.5$  at  $p$ -value 0.05 and the mean FPKM 1, we could identify 2170 DEGs (Fig. 5). This included 584 upregulated and 1586 downregulated DEGs (Table S8). Next, we analyzed these DEGs with the bioinformatics tool (DAVID bioinformatics resource) and identified several gene ontology (GO) clusters that may be relevant to the defects observed in the mutant (Fig. 6)(Table S10).

We next performed the *foxe3* indel mutant DEGs with orthologous genes enriched in mouse E12.5 lens according to the bioinformatics database resource iSyTE2.0 (integrated Systems Tool for Eye gene discovery)(Kakrana et al. 2018), which has led to the identification of high-priority candidate genes in lens development (Siddam et al. 2018). We find that 16.6% ( $n=181$  genes) that are 1.5-fold up- or down-regulated in the *foxe3* indel mutant fish have mouse orthologs that exhibit enriched expression at 1.5-fold ( $n=1088$ ) in the lens at E12.5 in iSyTE (Table S11). Interestingly, of these 181 DEGs, over 70% genes ( $n=128$ ) are down-regulated in *foxe3* mutant zebrafish and are enriched in the E12.5 mouse lens. Among the *foxe3* down-regulated genes that are also iSyTE lens-enriched are interesting candidates such as *grifin* (galectin family protein in lens PMID: 9786891), *mipb* (associated with cataract PMID: 20671274), *crygm* (lens gamma crystallin PMID: 19936306), *cryba2b* (associated with cataract PMID: 23508780), *tmod1* (associated with lens fiber skeleton organization PMID: 19752024), *slc16a12a* (associated with cataract PMID: 18304496), *six5* (associated with cataract PMID: 10802668), *aldh1a3* (associated with microphthalmia/

anophthalmia PMID: 23312594) as well as new uncharacterized candidates such as *mf10* and *tcf7*, among many others.

Further, we also performed a comparative analysis of the DEGs identified in the *foxe3* indel mutant fish with microarray-identified DEGs in the lens of a transgenic mouse model wherein Foxe3 is over-expressed in the fiber cells via the *Cryaa*-promoter (Landgren et al. 2008 PMID: 18539941). Because the experimental context in the present study is *foxe3* loss-of-function (*foxe3* indel mutant zebrafish) while that of the previous study is *Foxe3* gain-of-function (Foxe3 over-expression in mouse lens), we expect that genes that are down-regulated in our study are likely to be identified as up-regulated in the Landgren et al. (2008) study. Indeed, we find that 13.8% genes ( $n=154$ ) in the *foxe3* indel mutant fish correlate with the 1113 mouse orthologs in this manner between the two studies (Table S12). Thus, although these comparisons are between whole embryonic tissue of *foxe3* indel mutant fish RNA-seq DEGs and wild-type (iSyTE) or Foxe3-over-expressed mouse lens tissue, they identify many new *Foxe3* downstream targets whose positive regulation by this key transcription factor is conserved between fish and mouse.

### **foxe3 regulates expression of genes involved in lens development**

The results of the whole transcriptome analysis (RNA-Seq) on RNA taken from pooled, putative homozygous *foxe3* mutant larvae and wildtype larvae demonstrated significant misregulation of several genes that are expressed in the lens and that have human orthologues associated with eye defects, including cataracts (Tables 2 and S9; Fig. 7). We found significant upregulation of crystallin genes (*crybb1*, *cryba4*, *cryba2a*, *cryball1*, *crygn1*, *crygn2*, *crygmx12*), glutamine synthetase domain containing lens protein encoding gene (*Igsn*), lens fiber membrane intrinsic protein (*Lim2.2*), transcription factor genes (heat shock factor 4 (*hsf4*), early growth response 1 (*egr1*) as well as genes with potential function in transcription (*e.g.* GO:0003700~transcription factor activity and GO:0043565~sequence-specific DNA binding (Fig. 6A)(Table S10). The downregulated genes were found to be enriched in the GO categories for GO:0015254~glycerol channel activity, GO:0006508~proteolysis, GO:0008236~serine-type peptidase activity, GO:0008289~lipid binding, GO:0042632~cholesterol homeostasis and GO:0051006~positive regulation of lipoprotein lipase activity (Fig. 6B) (Table S10). The dysregulation of the candidate genes *aqp3a*, *ctrb1*, *crygmx*, *cryba2b*, *cdh1*, *cp*, *cx43.4*, *mipa*, *fmodb* and *fgfbp1b* was independently validated with qRT-PCR (Fig. 7). Interestingly, several of the genes up-regulated in the *foxe3* indel mutant are normally found to be enriched in fiber cells in agreement with the function of *foxe3* in maintenance of epithelial cell fate in the mouse.

## **Discussion**

We used CRISPR/Cas9 technology to create an *in vivo* model of reduced *foxe3* function by targeting the protein forkhead domain in zebrafish. Larvae that are homozygous for the indel variant c.296\_300delTGCAG, predicting p.(Val99Alafs\*2) (NM\_001079682.2), in *foxe3* have smaller eyes and defective lens formation at 72 hpf; (Figs. 1–2), resembling the findings observed with prior antisense MO injections targeting *foxe3* in zebrafish (Shi et al 2006; Swindell et al 2008). This phenotype demonstrated an autosomal recessive pattern of

inheritance and was fully penetrant. Immunohistochemistry with z1-1 antibody that stains differentiating lens fibers showed increased expression in the indel mutant larvae compared to wildtype controls. We performed whole genome transcriptome analysis (RNA-Seq) on RNA taken from whole, pooled *foxe3* mutant larvae with eye defects and wildtype larvae and found significant dysregulation of genes that were expressed in the lens and that have human orthologues associated with cataracts, including upregulation of *cryba2a*, *cryba111*, *crygmxl2*, *lgsn* and *hsf4* and downregulation of *mipa*, *fmodb* and *cx43.4*.

The human orthologue of *cryba2a*, *CRYBA2*, is expressed during early lens development in zebrafish and has been associated with autosomal dominant cataracts in humans (Reis et al 2013). *cryba111* is also expressed in the lens and the related gene, *CRYBA1*, is well known to be associated with human cataracts (Kannabiran et al 1998; Khan et al 2015). Additional crystallin genes also expressed in the lens that were dysregulated in the *foxe3* indel larvae with eye defects, included *cryba4*, *crygmxl2*, *crybb1*, *crygn2*, *cryba1b* that were upregulated and *cryba2b* that was downregulated (Table S8). As lens fiber differentiation involves an accumulation of crystallin proteins (Cvekl et al 2015), the increased expression of crystallin genes in the *foxe3* indel larvae is consistent with the hypothesis that loss of *foxe3* augments differentiation of lens fibers, as per the finding that ectopic up-regulation of *Foxe3* in murine lenses results in down-regulation of fiber expression genes, including those encoding crystallins (Landgren et al 2008).

Other upregulated genes in the present study that support this hypothesis include *hsf4*, a transcription factor that is expressed in lens fiber cells and regulates the expression of heat-shock proteins, including lens B-crystallin (Somasundaram and Bhat 2004; Anand and Lachke 2017; Anand et al. 2018). Deleterious variants located in the DNA-binding domain of this gene cause autosomal dominant cataracts and autosomal recessive cataracts when within hydrophobic repeats (HR-A/B) or downstream of the hydrophobic repeats (for review, see Anand et al. 2018). Targeted *Hsf4* deletion or mutation in mice also results in lens fiber cell defects and cataracts, with down regulation of the  $\gamma$ -crystallin genes in the early postnatal lens (Fujimoto et al 2004; Shi et al 2009; Anand et al. 2018). *lgsn*, encoding lensin, is a member of the glutamine synthetase (GS) family of proteins that is moderately abundant in the vertebrate lens and exhibits a higher, localized concentration in differentiating lens fiber cells (Grassi et al 2006; Wyatt et al 2006). Recombinant murine lensin is catalytically inactive, and thus lensin is considered most likely to have a structural or chaperone-like role similar to that of the crystallin proteins in the lens (Wyatt et al 2006). A function in maintaining lens transparency has been hypothesized (Grassi et al 2006), but as yet there is no known relationship to human disease.

In relation to the genes that were found to be downregulated, major intrinsic protein of lens fiber a (*mipa*; also known as aquaporin 0, or *aqpo*) is expressed in the eye and lens vesicle (Greiling et al 2010; Sorokina et al 2011). This gene has been studied in *Danio rerio* and MO knockdown of this gene results in cataract formation, indicating that it is critical for normal lens development and transparency (Froger et al 2010). Mutations in this gene are also a notable cause of autosomal dominant cataracts in humans (Chepelinsky 2009). Fibromodulin (*fmodb*) is a member of the small leucine rich proteoglycan (SLRP) group of extracellular matrix that interacts with type I and type II collagen fibrils and inhibits

fibrillogenesis *in vitro* (Chen et al 2010; Amjadi et al 2013; Steinhart et al 2014). Fibromodulin null mice demonstrate thinner sclera and reduced diameter of collagen fibers in sclera that potentially alters susceptibility to the damage resulting from raised intraocular pressure (Chen et al 2010; Amjadi et al 2013). Double knock out mice with null alleles for fibromodulin and lumican (Lum(-/-)Fmod(-/-)) have high myopia, increased axial length, thin sclera and retinal detachment, and thus it has been hypothesized that fibromodulin may be relevant to the development of myopia in humans (Chakravarti et al 2003), although no pathogenic variants have been demonstrated to date. Connexin 43 (*cx43*), connexin 46 and connexin 50 were also specifically expressed in the lens and Cx43 was present in lens epithelial cells and differentiating lens fiber cells prior to downregulation during differentiation (Behnam et al 2016). Mutations in CX46 and CX50 were also associated with autosomal dominant and autosomal recessive congenital cataracts and age-related cataracts in humans (Pichi et al 2016; Berthoud and Ngezahayo 2017).

Our results suggest that our *foxe3* indel model is highly relevant to the study of lens development and has significant potential to discover insights into the GRNs that are perturbed by reduced *foxe3* function and are conserved across vertebrates, thus allowing the identification of core *foxe3* regulated gene circuits. Our results are consistent with the hypothesis that *foxe3* inactivation is required for fiber differentiation, in that a deficiency of *foxe3* increases the expression of genes involved in this process. Two unsolved factors remain. We used RNA from whole zebrafish and thus expression in other tissues may have influenced our RNA-Seq results, although it should be noted that many of the genes that were dysregulated in the *foxe3* indel mutant larvae exhibit lens specific expression, with established roles in lens biology (Lachke et al 2012; Krakana et al 2017). In the future, experiments could be performed on RNA extracted from the head or eye only. Similarly, we were unable to obtain a suitable antibody to determine the amount of residual protein in the *foxe3* indel mutant fish with eye defects; in view of our qRT-PCR results, we cannot differentiate between a partial loss of function and a total null model.

## Conclusion

We have used CRISPR/Cas9 to target the forkhead domain of the zebrafish *foxe3* gene, establishing a new *Danio rerio* model of *foxe3* deficiency that manifests smaller eyes and lens defects, with lenses exhibiting increased staining with zl-1 antibody, consistent with increased lens fiber cell differentiation. Whole genome transcriptome analysis showed that this model had significant dysregulation of genes that are expressed in the lens and eye whose orthologues are associated with cataracts in human patients, including the fiber cell-expressed factors such as the crystallin genes *cryba2a* and *cryba111*, as well as *mipa* and *hsf4*. Significant upregulation of *Igsn* and *crygmx12* and downregulation of *fmodb* and *cx43.4*, genes that are expressed in the zebrafish lens, but that are not yet known to be associated with an eye phenotype in humans, was also noted. These results were consistent with the known role for *foxe3* in the anterior epithelium of the lens prior to differentiation of lens fibers, demonstrating that the zebrafish mutant model is highly relevant to the study of the conserved gene regulatory networks involved in vertebrate lens and eye development.

## Supplementary Material

Refer to Web version on PubMed Central for supplementary material.

## Acknowledgments

Library preparation and QCs for sequencing was conducted by Yanxia Hao, Jim McGuire and Natasha Carli, PhD, at the Gladstone Genomics Core.

## References

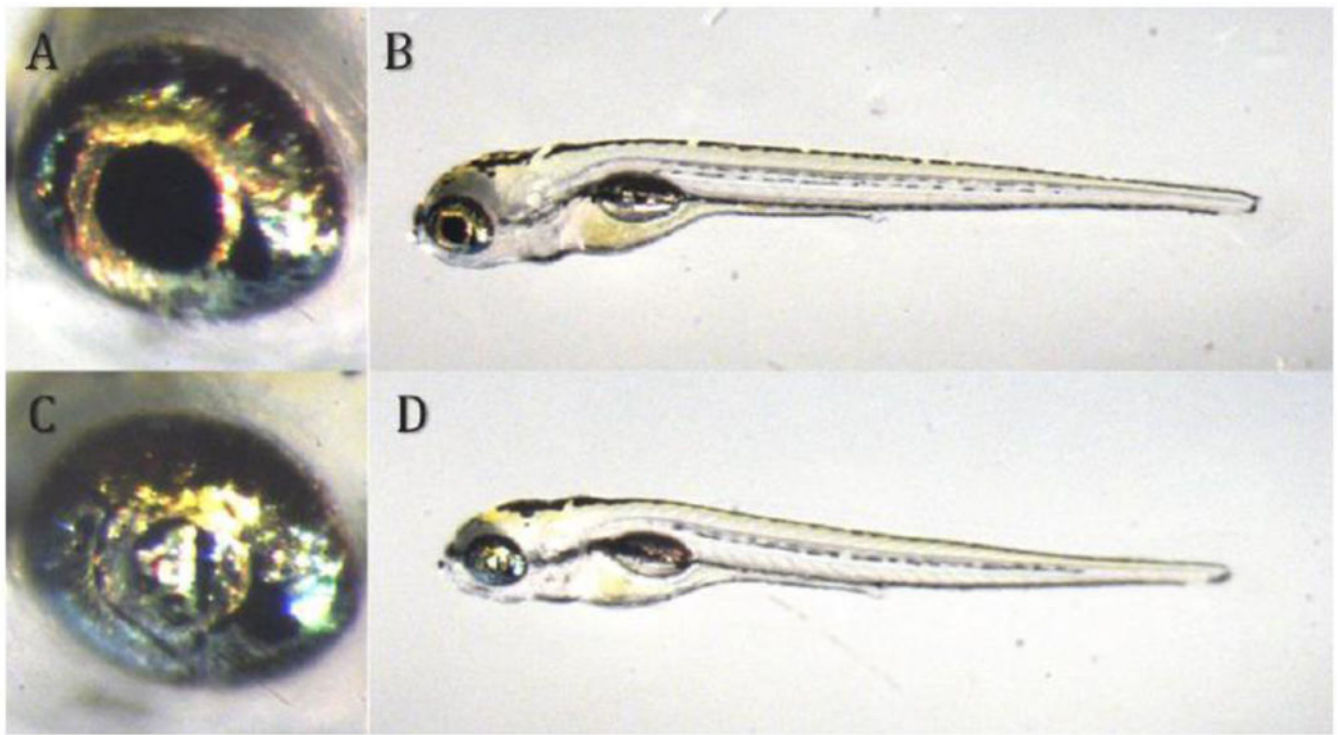
- Amjadi S, Mai K, McCluskey P, Wakefield D. The role of lumican in ocular disease. *ISRN Ophthalmol.* 2013 Jul 24.2013:632302. [PubMed: 24558602]
- Anand D, Lachke SA. Systems biology of lens development: A paradigm for disease gene discovery in the eye. *Exp Eye Res.* 2017; 156:22–33. [PubMed: 26992779]
- Anand D, Agrawal SA, Slavotinek A, Lachke SA. Mutation Update of Transcription Factor Genes *FOXE3*, *HSF4*, *MAF* and *PITX3* Causing Ocular Defects. *Hum Mutat.* 2018; 39:471–494. [PubMed: 29314435]
- Behnam M, Imagawa E, Chaleshtori AR, Ronasian F, Salehi M, Miyake N, Matsumoto N. A novel homozygous mutation in *HSF4* causing autosomal recessive congenital cataract. *J Hum Genet.* 2016; 61:177–179. [PubMed: 26490182]
- Berthoud VM, Ngezahayo A. Focus on lens connexins. *BMC Cell Biol.* 2017 Jan 17.18(Suppl 1):6. [PubMed: 28124626]
- Blixt A, Mahlapuu M, Aitola M, Pelto-Huikko M, Enerbäck S, Carlsson P. A forkhead gene, *FoxE3*, is essential for lens epithelial proliferation and closure of the lens vesicle. *Genes Dev.* 2000; 14:245–54. [PubMed: 10652278]
- Blixt A, Landgren H, Johansson BR, Carlsson P. *Foxe3* is required for morphogenesis and differentiation of the anterior segment of the eye and is sensitive to *Pax6* gene dosage. *Dev Biol.* 2007; 302:218–229. [PubMed: 17064680]
- Bolger AM, Lohse M, Usadel B. Trimmomatic: A flexible trimmer for Illumina Sequence Data. *Bioinformatics.* 2014 btu170.
- Brémond-Gignac D, Bitoun P, Reis LM, Copin H, Murray JC, Semina EV. Identification of dominant *FOXE3* and *PAX6* mutations in patients with congenial cataract and aniridia. *Mol Vis.* 2010; 16:1705–1711. [PubMed: 20806047]
- Brownell I, Dirksen M, Jamrich M. Forkhead *Foxe3* maps to the dysgenetic lens locys and is critical in lens development and differentiation. *Genesis.* 2000; 27:81–93. [PubMed: 10890982]
- Chakravarti S, Paul J, Roberts L, Chervoneva I, Oldberg A, Birk DE. Ocular and scleral alterations in gene-targeted lumican-fibromodulin double-null mice. *Invest Ophthalmol Vis Sci.* 2003 Jun; 44(6):2422–32. [PubMed: 12766039]
- Chao R, Nevin L, Agarwal P, Riemer J, Bai X, Delaney A, Akana M, JimenezLopez N, Bardakjian T, Schneider A, Chassaing N, Schorderet DF, FitzPatrick D, Kwok PY, Ellgaard L, Gould DB, Zhang Y, Malicki J, Baier H, Slavotinek A. A male with unilateral microphthalmia reveals a role for *TMX3* in eye development. *PLoS One.* 2010; 5:e10565. [PubMed: 20485507]
- Chen S, Oldberg A, Chakravarti S, Birk DE. Fibromodulin regulates collagen fibrillogenesis during peripheral corneal development. *Dev Dyn.* 2010 Mar; 239(3):844–54. [PubMed: 20108350]
- Chen J, Wang Q, Cabrera PE, Zhong Z, Sun W, Jiao X, et al. Molecular genetic analysis of Pakistani families with autosomal recessive congenital cataracts by homozygosity screening. *Invest Ophthalmol Vis Sci.* 2017; 58:2207–2217. [PubMed: 28418495]
- Chepelinsky AB. Structural function of MIP/aquaporin 0 in the eye lens: genetic defects lead to congenital inherited cataracts. *Handb Exp Pharmacol.* 2009; (190):265–97.
- Cvekl A, McGreal R, Liu W. Lens Development and Crystallin Gene Expression. *Prog Mol Biol Transl Sci.* 2015; 134:129–67. [PubMed: 26310154]

- Cvekl A, Zhang X. Signaling and gene regulatory networks in mammalian lens development. *Trends Genet.* 2017; 33:677–702. [PubMed: 28867048]
- Doucette L, Green J, Fernandez B, Johnson GJ, Parfrey P, Young TL. A novel, non-stop mutation in FOXE3 causes an autosomal dominant form of variable anterior segment dysgenesis including Peters anomaly. *Eur J Hum Genet.* 2011; 19:293–299. [PubMed: 21150893]
- Froger A, Clemens D, Kalman K, Németh-Cahalan KL, Schilling TF, Hall JE. Two distinct aquaporin 0s required for development and transparency of the zebrafish lens. *Invest Ophthalmol Vis Sci.* 2010 Dec; 51(12):6582–92. [PubMed: 20671274]
- Fujimoto M, Izu H, Seki K, Fukuda K, Nishida T, Yamada S, Kato K, Yonemura S, Inouye S, Nakai A. HSF4 is required for normal cell growth and differentiation during mouse lens development. *EMBO J.* 2004 Oct 27; 23(21):4297–306. [PubMed: 15483628]
- Gould DB, John SW. Anterior segment dysgenesis and the developmental glaucomas are complex traits. *Hum Mol Genet.* 2002; 11:1185–1193. [PubMed: 12015278]
- Grassi F, Moretto N, Rivetti C, Cellai S, Betti M, Márquez AJ, et al. Structural and functional properties of lensin, a pseudo-glutamine synthetase in the transparent human lens. *Biochem Biophys Res Commun.* 2006; 350:424–429. [PubMed: 17010935]
- Greiling TM, Aose M, Clark JI. Cell fate and differentiation of the developing ocular lens. *Invest Ophthalmol Vis Sci.* 2010 Mar; 51(3):1540–6. [PubMed: 19834024]
- Huang da W, Sherman BT, Lempicki RA. Systematic and integrative analysis of large gene lists using DAVID bioinformatics resources. *Nat Protoc.* 2009; 4:44–57. [PubMed: 19131956]
- Islam L, Kelberman D, Williamson L, Lewis N, Glinzicz MB, Nischal KK, et al. Functional analysis of FOXE3 mutations causing dominant and recessive ocular anterior segment disease. *Hum Mutat.* 2015; 36:296–300. [PubMed: 25504734]
- Iseri SU, Osborne RJ, Farrall M, Wyatt AW, Mirza G, Nürnberg G, et al. Seeing clearly: the dominant and recessive nature of FOXE3 in eye developmental anomalies. *Hum Mutat.* 2009; 30:1378–1386. [PubMed: 19708017]
- Kakrana A, Yang A, Anand D, Djordjevic D, Ramachandruni D, Singh A, Huang H, Ho JWK, Lachke SA. iSyTE 2.0: a database for expression-based gene discovery in the eye. *Nucleic Acids Res.* 2018; 46(D1):D875–D885. [Epub ahead of print]. DOI: 10.1093/nar/gkx837 [PubMed: 29036527]
- Kannabiran C, Rogan PK, Olmos L, Basti S, Rao GN, Kaiser-Kupfer M, et al. Autosomal dominant zonular cataract with sutural opacities is associated with a splice mutation in the betaA3/A1-crystallin gene. *Mol Vis.* 1998; 4:21. [PubMed: 9788845]
- Khan AO, Aldahmesh MA, Alkuraya FS. Phenotypes of Recessive Pediatric Cataract in a Cohort of Children with Identified Homozygous Gene Mutations (An American Ophthalmological Society Thesis). *Trans Am Ophthalmol Soc.* 2015; 113:T7. [PubMed: 26622071]
- Khan SY, Vasanth S, Kabir F, Gottsch JD, Khan AO, Chaerkady R, Lee MC, Leitch CC, Ma Z, Laux J, Villasmil R, Khan SN, Riazuddin S, Akram J, Cole RN, Talbot CC, Pourmand N, Zaghoul NA, Hejtmancik JF, Riazuddin SA. FOXE3 contributes to Peters anomaly through transcriptional regulation of an autophagy-associate protein termed DNAJB1. *Nat Commun.* 2016 Apr 6.7:10953. [PubMed: 27218149]
- Kuang S-Q, Medina-Martinez O, Guo D, Gong L, Regalado ES, Reynolds CL, et al. FOXE3 mutations predispose to thoracic aortic aneurysms and dissections. *J Clin Invest.* 2016; 126:948–961. [PubMed: 26854927]
- Lachke SA, Ho JW, Kryukov GV, O'Connell DJ, Aboukhalil A, Bulyk ML, Park PJ, Maas RL. iSyTE: integrated Systems Tool for Eye gene discovery. *Invest Ophthalmol Vis Sci.* 2012 Mar 21; 53(3):1617–27. [PubMed: 22323457]
- Landgren H, Blixt A, Carlsson P. Persistent FoxE3 expression blocks cytoskeletal remodeling and organelle degradation during lens fiber differentiation. *Invest Ophthalmol Vis Sci.* 2008; 49:4269–4277. [PubMed: 18539941]
- Medina-Martinez O, Brownell I, Amaya-Manzanares F, Hu Q, Behringer RR, Jamrich M. Severe defects in proliferation and differentiation of lens cells in Foxe3 null mice. *Mol Cell Biol.* 2005; 25:8854–8863. [PubMed: 16199865]
- Medina-Martinez O, Jamrich M. Foxe view of lens development and disease. *Development.* 2007; 134:1455–1463. [PubMed: 17344231]

- Nischal KK. Genetics of Congenital Corneal Opacification—Impact on Diagnosis and Treatment. *Cornea*. 2015; 34:S24–34. [PubMed: 26352876]
- Ormestad M, Blixt A, Churchill A, Martinsson T, Enerbäck S, Carlsson P. Foxe3 haploinsufficiency in mice: a model for Peters' anomaly. *Invest Ophthalmol Vis Sci*. 2002; 43:1350–1357. [PubMed: 11980846]
- Pichi F, Lembo A, Serafino M, Nucci P. Genetics of Congenital Cataract. *Dev Ophthalmol*. 2016; 57:1–14. [PubMed: 27043388]
- Reis LM, Tyler RC, Muheisen S, Raggio V, Salviati L, Han DP, et al. Whole exome sequencing in dominant cataract identifies a new causative factor, CRYBA2, and a variety of novel alleles in known genes. *Hum Genet*. 2013; 132:761–770. [PubMed: 23508780]
- Saboo US, Penke D, Mahindrakar A, Uddaraju M, Sankurathri C, Gong X, et al. Exome sequencing reveals novel homozygous FOXE3 mutation in microphthalmos with staphylomatous malformation. *Ophthalmic Genet*. 2017; 38:295–297. [PubMed: 27669367]
- Siddam AD, Gautier-Courteille C, Perez-Campos L, Anand D, Kakrana A, Dang CA, Legagneux V, Méreau A, Viet J, Gross JM, Paillard L, Lachke SA. The RNA-binding protein Celf1 post-transcriptionally regulates p27<sup>Kip1</sup> and Dnase2b to control fiber cell nuclear degradation in lens development. *PLOS Genetics*. 2018; 14(3):e1007278. [PubMed: 29565969]
- Semina EV, Brownell I, Mintz-Hittner HA, Murray JC, Jamrich M. Mutations in the human forkhead transcription factor FOXE3 associated with anterior segment ocular dysgenesis and cataracts. *Hum Mol Genet*. 2001; 10:231–236. [PubMed: 11159941]
- Shi X, Luo Y, Howley S, Dzialo A, Foley S, Hyde DR, et al. Zebrafish foxe3: roles in ocular lens morphogenesis through interaction with pitx3. *Mech Dev*. 2006; 123:761–782. [PubMed: 16963235]
- Shi X, Cui B, Wang Z, Weng L, Xu Z, Ma J, Xu G, Kong X, Hu L. Removal of Hsf4 leads to cataract development in mice through down-regulation of gamma S-crystallin and Bfsp expression. *BMC Mol Biol*. 2009 Feb 19;10:10. [PubMed: 19224648]
- Somasundaram T, Bhat SP. Developmentally dictated expression of heat shock factors: exclusive expression of HSF4 in the postnatal lens and its specific interaction with alphaB-crystallin heat shock promoter. *J Biol Chem*. 2004; 279:44497–44503. [PubMed: 15308659]
- Sorokina EA, Muheisen S, Mlodik N, Semina EV. MIP/Aquaporin 0 represents a direct transcriptional target of PITX3 in the developing lens. *PLoS One*. 2011; 6:e21122. [PubMed: 21698120]
- Steinhart MR, Cone-Kimball E, Nguyen C, Nguyen TD, Pease ME, Chakravarti S, Oglesby EN, Quigley HA. Susceptibility to glaucoma damage related to age and connective tissue mutations in mice. *Exp Eye Res*. 2014 Feb;119:54–60. [PubMed: 24368172]
- Swindell EC, Zilinski CA, Hashimoto R, Shah R, Lane ME, Jamrich M. regulation and function of foxe3 during early zebrafish development. *Genesis*. 2008; 46:177–183. [PubMed: 18327772]
- Talbot JC, Amacher SL. A streamlined CRISPR pipeline to reliably generate zebrafish frameshifting alleles. *Zebrafish*. 2014; 11:583–585. [PubMed: 25470533]
- Trapnell C, Pachter L, Salzberg SL. TopHat: discovering splice junctions with RNA-Seq. *Bioinformatics*. 2009; 25:1105–1111. [PubMed: 19289445]
- Ullah E, Nadeem Saqib MA, Sajid S, Shah N, Zubair M, Khan MA, et al. Genetic analysis of consanguineous families presenting with congenital ocular defects. *Exp Eye Res*. 2016; 146:163–171. [PubMed: 26995144]
- Valleix S, Niel F, Nedelec B, Algros MP, Schwartz C, Delbosc B, et al. Homozygous nonsense mutation in the FOXE3 gene as a cause of congenital primary aphakia in humans. *Am J Hum Genet*. 2006; 79:358–364. [PubMed: 16826526]
- Wada K, Maeda YY, Watanabe K, Oshio T, Ueda T, Takahashi G, et al. A deletion in a cis element of Foxe3 causes cataracts and microphthalmia in rct mice. *Mamm Genome*. 2011; 22:693–702. [PubMed: 22002806]
- Williamson KA, FitzPatrick DR. The genetic architecture of microphthalmia, anophthalmia and coloboma. *Eur J Med Genet*. 2014; 57:369–380. [PubMed: 24859618]
- Wride MA. Lens fiber cell differentiation and organelle loss: many paths lead to clarity. *Philos Trans R Soc Lond B Biol Sci*. 2011; 366:1219–1233. [PubMed: 21402582]

- Wu D, Mandal S, Choi A, Anderson A, Prochazkova M, Perry H, et al. *DLX4* is associated with orofacial clefting and abnormal jaw development. *Hum Mol Genet.* 2015; 24:4340–4352. [PubMed: 25954033]
- Wyatt K, White HE, Wang L, Bateman OA, Slingsby C, Orlova EV, Wistow G. Lengsin is a survivor of an ancient family of class I glutamine synthetases re-engineered by evolution for a role in the vertebrate lens. *Structure.* 2006 Dec; 14(12):1823–34. [PubMed: 17161372]





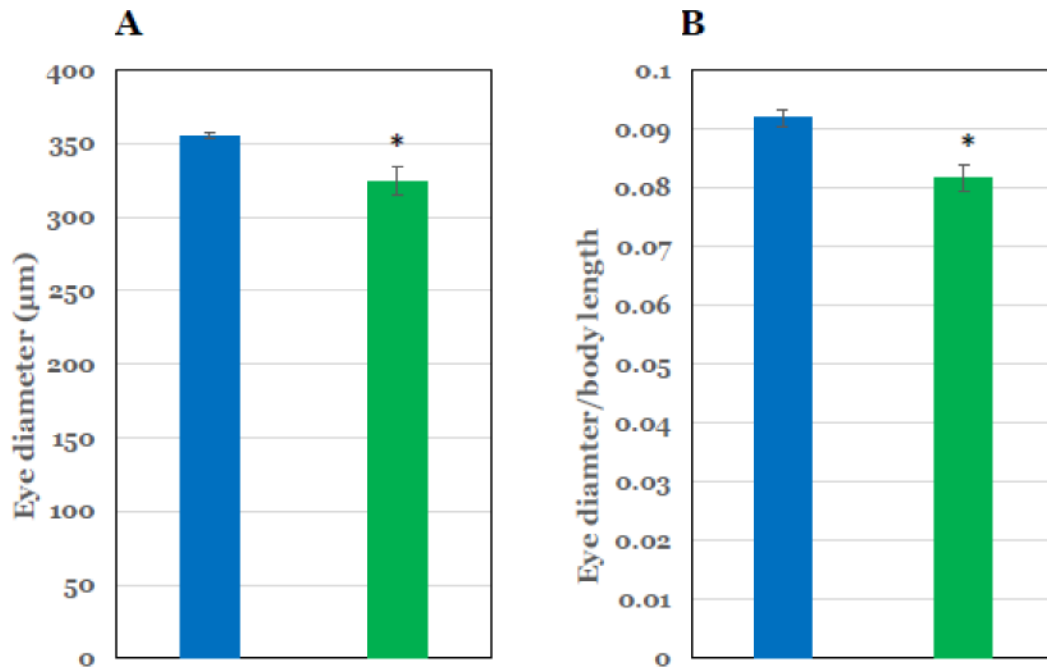
**Fig. 1. Homozygous *foxe3* indel larvae show eye abnormalities with aberrant lens formation at 6 days post fertilization**

A: Photograph of wildtype larva at 6 days post fertilization (dpf), showing normal eye formation (115 $\times$ ).

B: Photograph of wildtype larva at 6 dpf, showing normal exterior (25 $\times$ ).

C: Photograph of *foxe3* indel mutant larva at 6 dpf, showing eye defect with small pupil (115 $\times$ ).

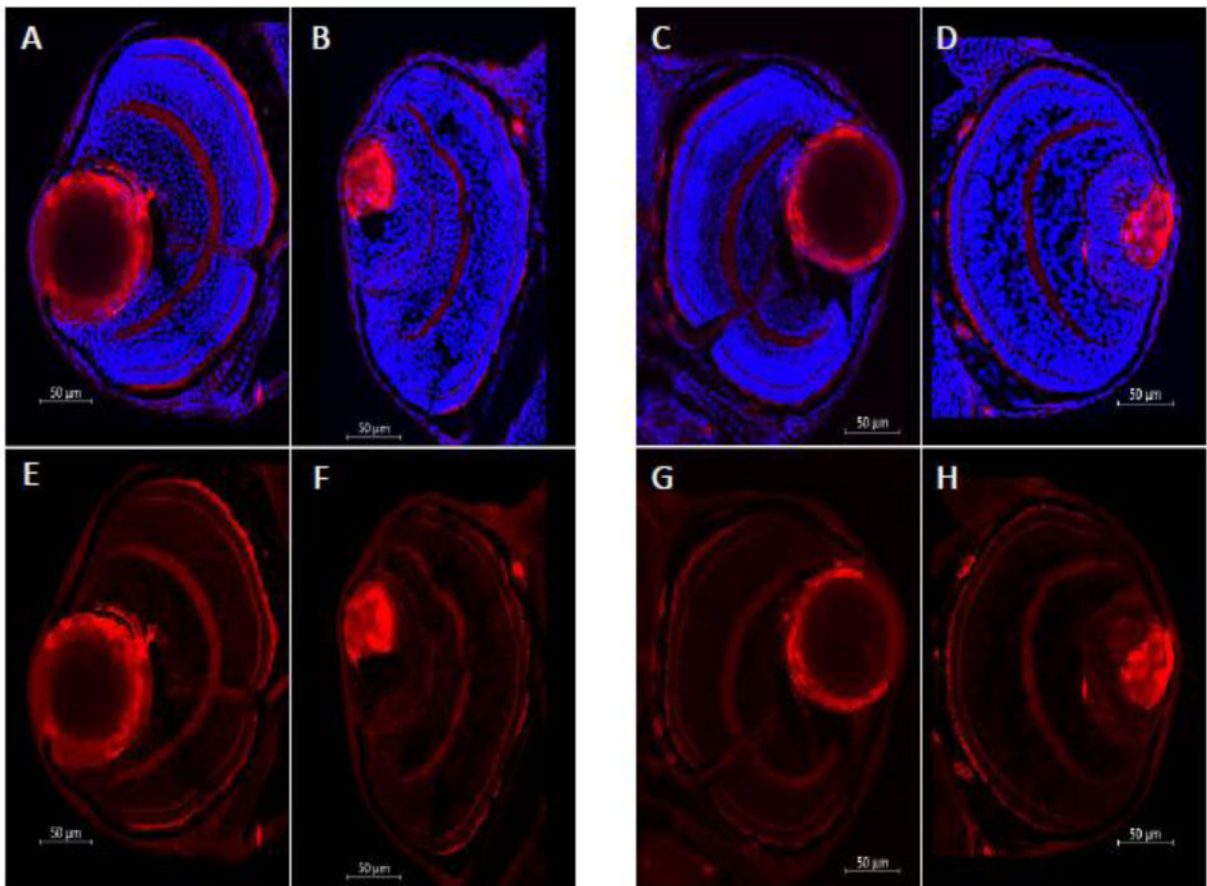
D: Photograph of *foxe3* indel mutant larva at 6 dpf, showing apparently normal exterior (25 $\times$ ).



**Fig. 2. Measurements of eye diameter and eye diameter/body length shows reduced eye size in homozygous *foxe3* indel larvae at 6 days post fertilization**

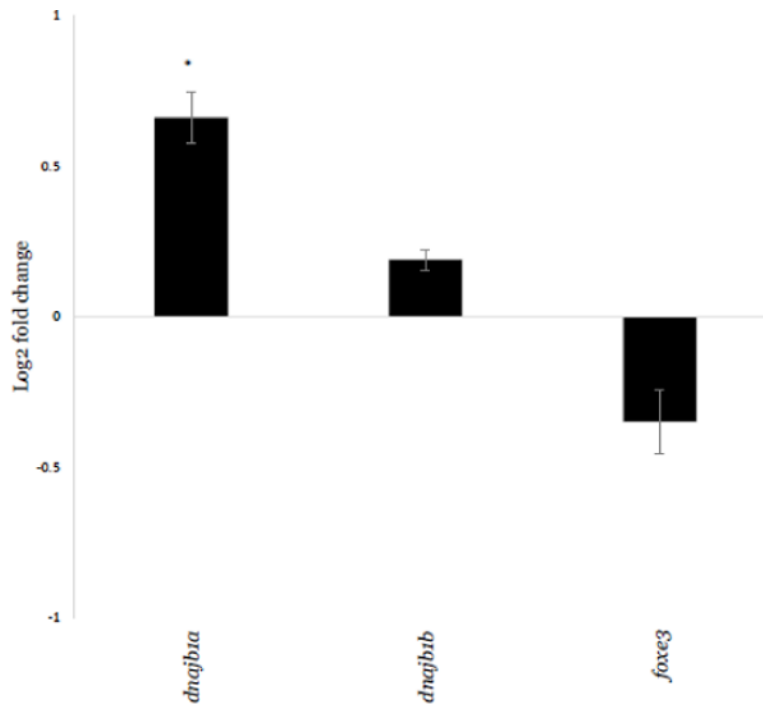
A. Measurements of eye diameter at 6 dpf in 9 wildtype larvae (blue bar) and 8 larvae with eye defects from an incross of heterozygous, *foxe3* indel fish (green bar). Plotted values represent the average of all measurements. Error bars are one standard error of the mean. A two-tailed, heteroscedastic T-test showed that eye size is significantly smaller in the *foxe3* indel mutant fish with eye defects ( $p=0.017$ ), indicated by \*.

B. Measurements of eye diameter divided by body length at 6 dpf in 8 wildtype larvae (blue bar) and 8 larvae with eye defects from an incross of heterozygous, *foxe3* indel fish (green bar). Plotted values are averages of all measurements. Error bars are one standard error of the mean. A two-tailed, heteroscedastic T-test showed eye size divided by body length is significantly smaller in the *foxe3* indel mutant fish with eye defects ( $p = 0.0037$ ), indicated by \*.



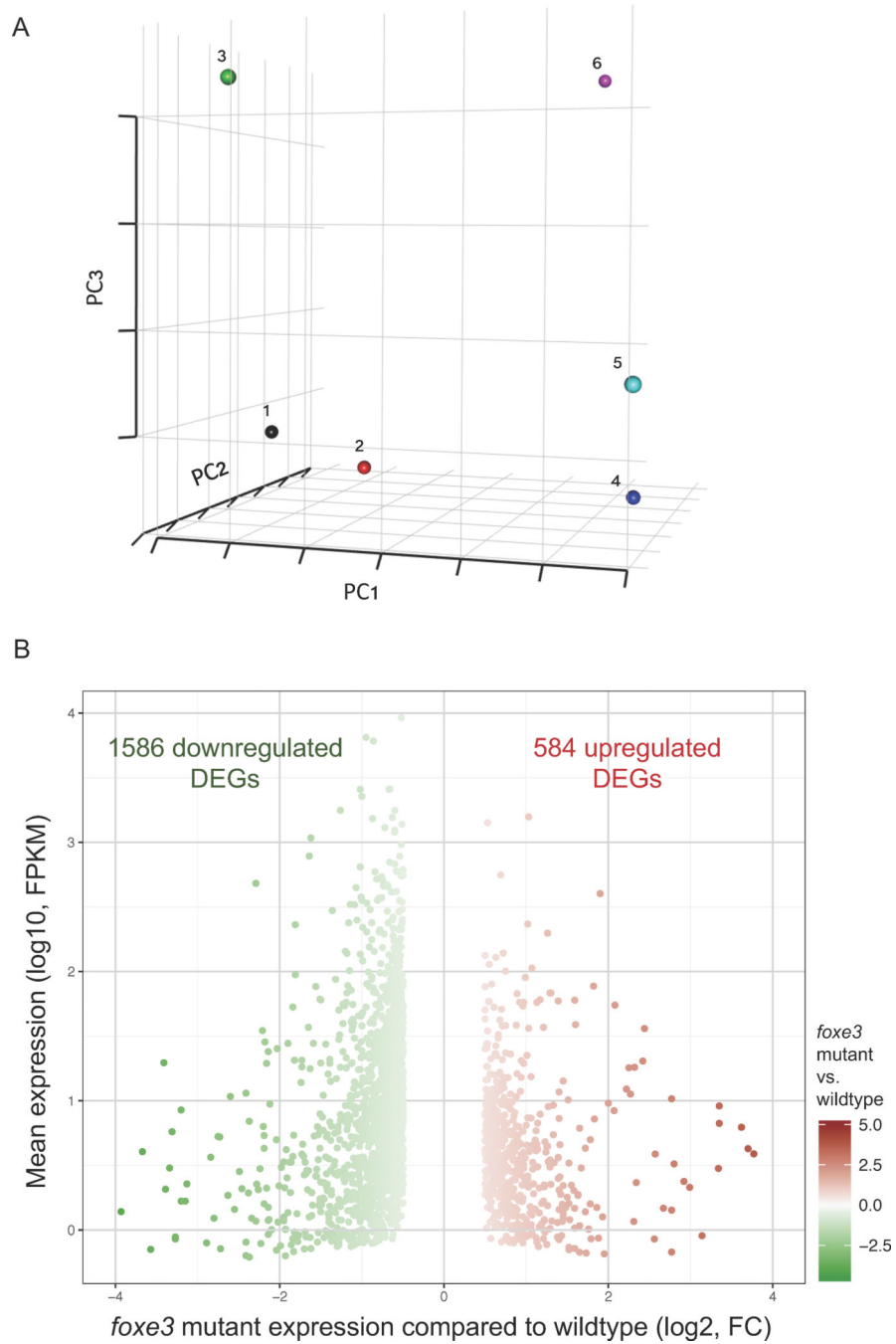
**Fig. 3. Homozygous, *foxe3* indel mutant larvae show smaller ocular lenses and increased staining with anti-lens fiber cell marker antibody zl-1 compared to wildtype controls at 6 days post fertilization**

Immunohistochemistry performed with zl-1 antibody and visualized with Texas Red at 6 days post fertilization (dpf) demonstrates smaller lenses with more intense staining of fiber cells in *foxe3* mutant larvae compared to wildtype controls. A. Right eye stained with DAPI and zl-1 (Texas red) from EKW control larva. B. Right eye stained with DAPI and zl-1 (Texas red) from homozygous *foxe3* indel larva, showing smaller lens with more intense zl-1 staining. C. Left eye stained with DAPI and zl-1 (Texas red) from EKW control larva. D. Left eye stained with DAPI and zl-1 (Texas red) from homozygous *foxe3* indel larva, showing smaller lens with more intense zl-1 staining. E. Right eye stained with zl-1 (Texas red) from EKW control larva. F. Right eye stained with zl-1 (Texas red) from homozygous *foxe3* indel larva, showing smaller lens with more intense zl-1 staining. G. Left eye stained with zl-1 (Texas red) from EKW control larva. H. Left eye stained with zl-1 (Texas red) from homozygous *foxe3* indel larva, showing smaller lens with more intense zl-1 staining.



**Fig. 4. Quantitative reverse transcriptase-polymerase chain reaction (qRT-PCR) shows upregulation of *dnajb1b* in *foxe3* indel mutant larvae**

RNA was extracted at 3 days post fertilization (dpf) from pools of control larvae and larvae with lens defects (putative homozygotes) obtained from an incross of fish that were heterozygous for an indel variant in *foxe3*. After cDNA synthesis, two pairs of gene-specific primers were used to amplify *dnajb1a* and *dnajb1b* and one pair of gene-specific primers was used to amplify *foxe3*. qRT-PCR was performed and analyzed using the Ct method and *gapdh* as an internal control gene. The results show log<sub>2</sub> expression fold change plotted for *dnajb1a*, *dnajb1b*, and *foxe3* and, in addition to confirming downregulation of *foxe3*, demonstrate upregulation of *dnajb1b* ( $p = 0.076$ ), but not *dnajb1a*, in larvae with eye defects from the *foxe3* indel mutant incross. All values are an average of 3 biological replicates with 3 replicates for each experiment and the error bars indicate the standard error of the mean.



**Fig. 5. RNA-Seq analysis of *foxe3* indel mutant zebrafish**

A: Principal component analysis (PCA) plot analysis of *foxe3* indel mutant and wildtype RNA-Seq datasets. Principal component analysis (PCA) of *foxe3* indel mutant and wildtype RNA-Seq datasets showed mutant (1, 2 and 3) and wildtype (4, 5 and 6) datasets as distinct clusters.

B: Differentially expressed genes in *foxe3* indel mutant compared to control. A plot of fold change (FC) for differentially expressed genes in *foxe3* indel mutant against mean

expression levels in fragments per kilobase of transcript per million mapped reads (FPKM), highlighting downregulated (green) and upregulated (red) genes at 3 dpf.

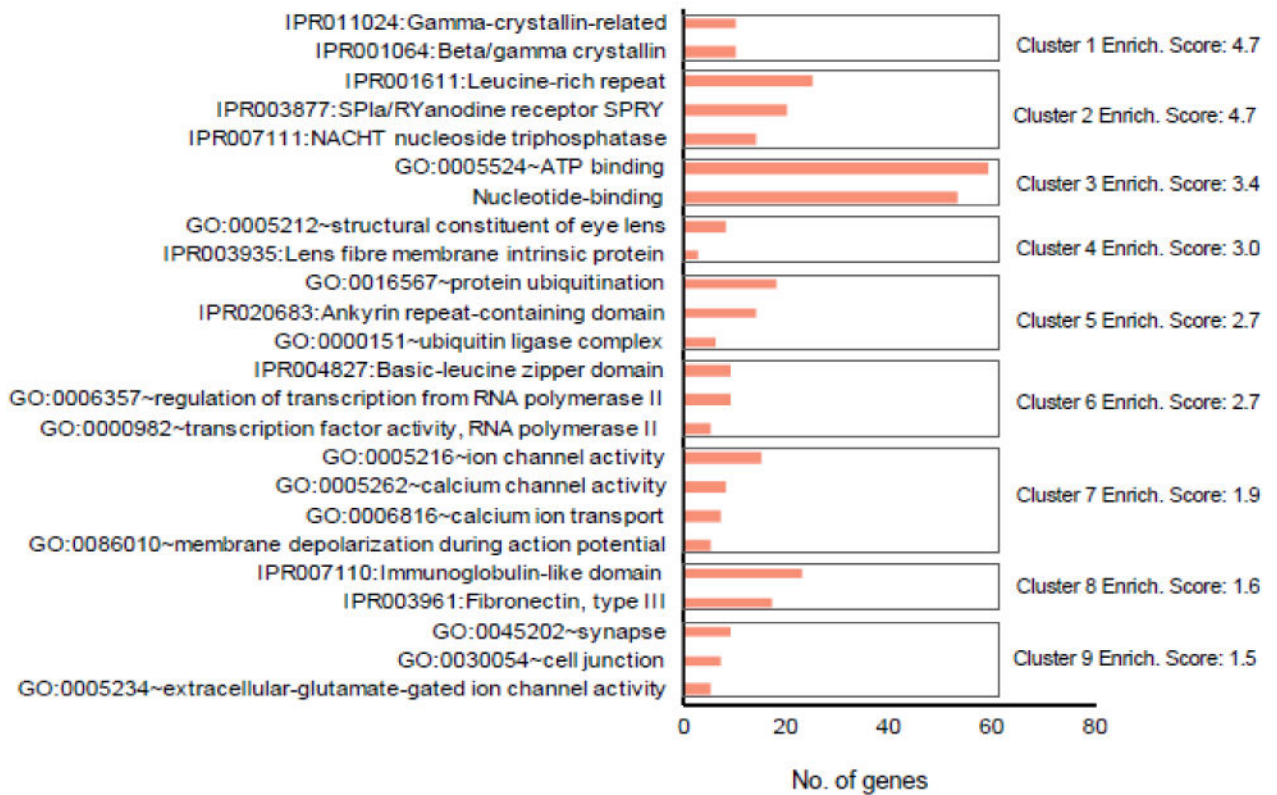
Author Manuscript

Author Manuscript

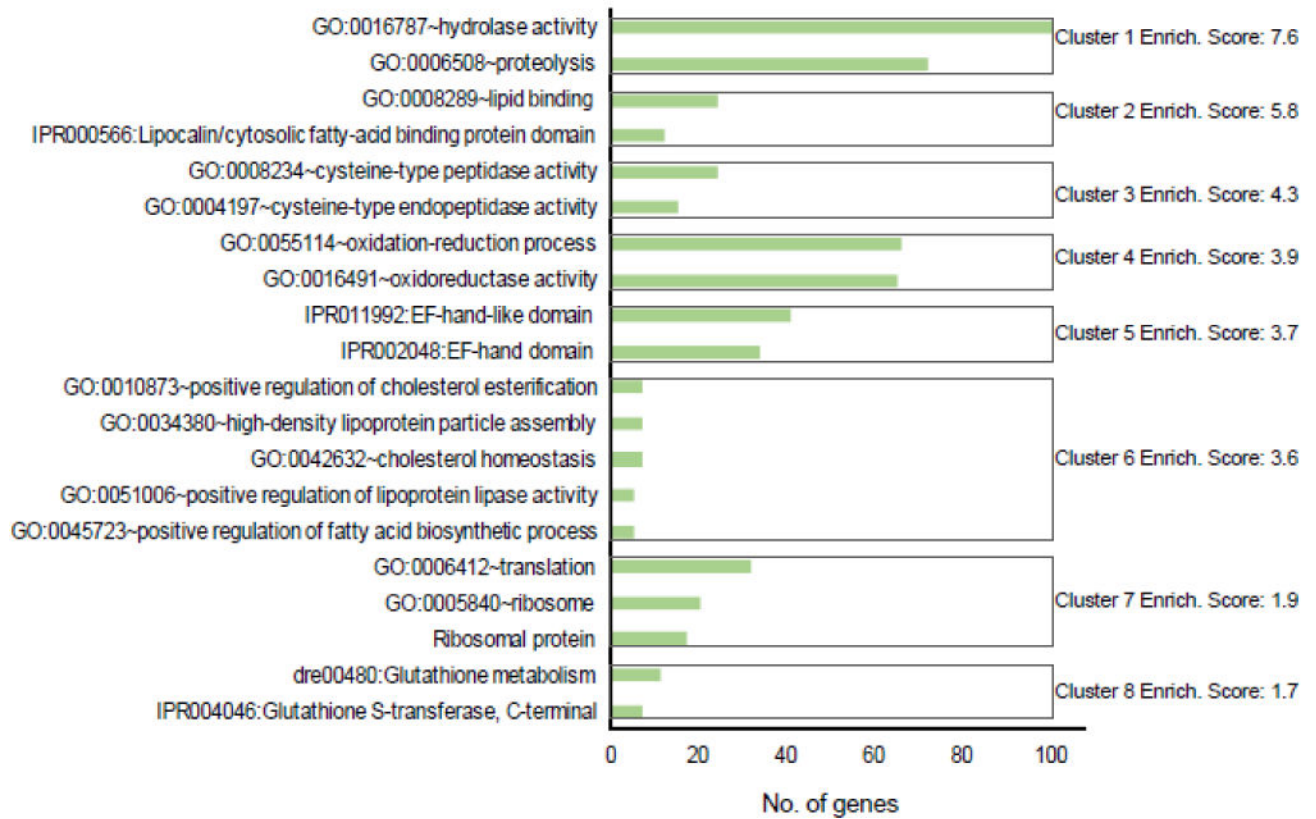
Author Manuscript

Author Manuscript

**A**



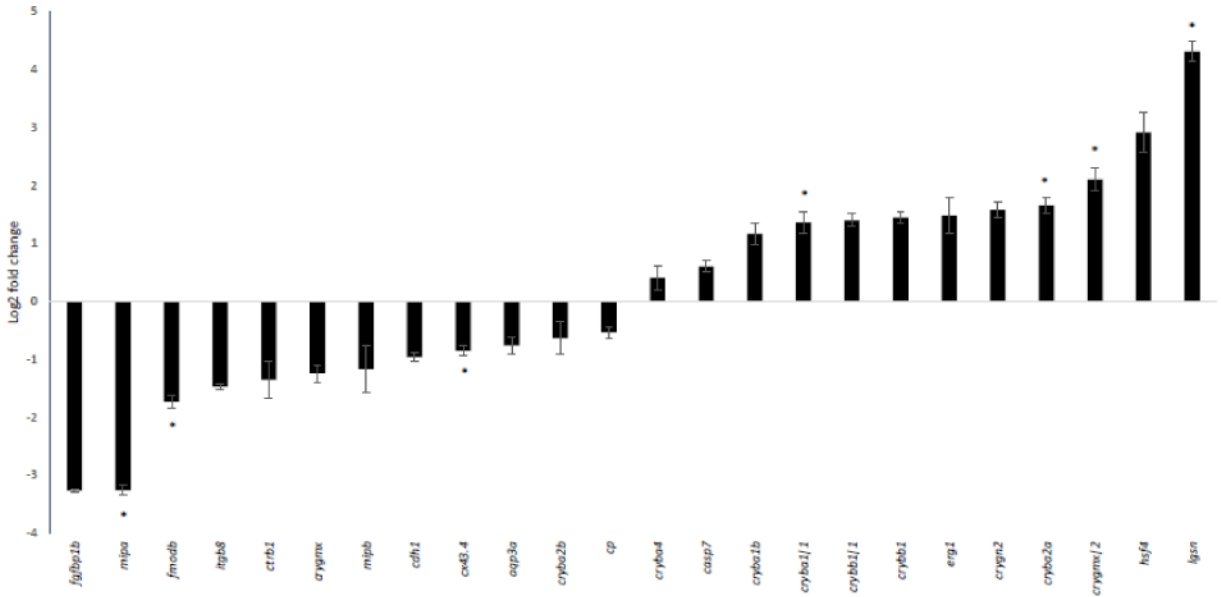
**B**



**Fig. 6. Gene ontology (GO) enrichment analysis of differentially expressed genes in *foxe3* indel mutant zebrafish**

A: GO analysis of statistically significant differentially expressed genes (DEGs) in *foxe3* indel mutant zebrafish was performed to identify enriched categories in up-regulated ( $n=584$ ) and, B: down-regulated ( $n=1586$ ) candidate genes. Cluster enrichment  $p$ -value  $<0.05$ .





**Fig. 7. Quantitative reverse transcriptase-polymerase chain reaction (qRT-PCR) showing significant upregulation of *lgsn*, *cryba2a* and *cryba11*, with significant downregulation of *mipa*, *fmodb* and *cx43.4***

RNA was extracted at 3 days post fertilization (dpf) from pools of control larvae and larvae with lens defects (putative homozygotes) obtained from an incross of fish that were heterozygous for an indel variant in *foxe3*. After cDNA synthesis, gene-specific primers were used to amplify each gene. qRT-PCR was performed and analyzed using the Ct method and *gapdh* or *eef1a111* as an internal control gene. The results showed significant upregulation of *lgsn*, *cryba2a* and *cryba11*, with significant downregulation of *mipa*, *fmodb* and *cx43.4*. All values are an average of 3 biological replicates with 3 replicates for each experiment and the error bars indicate the standard error of the mean. \* indicates statistical significance ( $p < 0.05$ ).

**Table 1**

Summary of sample details, number of reads generated and genome aligned RNA-seq reads

Data type	Sample name	Total no. of reads	Total no. of genome mapped reads	Alignment percentage (%)
<i>foxe3</i> indel mutant	R1	42040019	32446421	77.9%
	R2	55650416	43307019	77.9%
	R3	39677669	31735459	80.0%
wildtype control	R1	36565335	28883124	79.0%
	R2	30028996	23632733	78.0%
	R3	51918141	39375655	75.8%

Author Manuscript

Author Manuscript

Author Manuscript

Author Manuscript

**Table 2**

Results from whole transcriptome analysis (RNA-Seq) and qRT-PCR results showing selected genes with significantly altered expression in *foxe3* indel mutant larvae with eye defects compared to wildtype larvae

Gene/transcript	Expression	RNA-Seq log <sub>2</sub> fold change (wildtype: mutant)	p value*	qRT-PCR	CT <sup>a</sup>	p value <sup>*b</sup>	Function	Phenotype associated with human orthologue
<i>Downregulated</i>								
<i>mipa</i> /NM_001003534.1	Eye/lens fibers	-2.2	0.00005*	2.949		0.038*	Lens transparency	Cataract
<i>fnodh</i> /XM_001337991.3	Limbus/cornea	-2.12	0.00005*	1.733		0.002	Regulation of collagen fibrillogenesis	Unknown
<i>cx43.4</i> /NM_131069	Lens epithelium/fiber cells	-0.57	0.0014	0.849		0.002	Lens transparency; connexin-mediated communication in the lens	Cataract
<i>Upregulated</i>								
<i>lgsn</i> /NM_001031674	Lens	3.35	0.00005*	-4.316		0.006*	Chaperone	Unknown
<i>cryba2a</i> /NM_001002049	Lens	1.3	0.00005*	-1.655		0.034*	Lens transparency	Cataract
<i>cryba11</i> /NM_001017738	Lens	1.07	0.0006*	-1.674		0.038*	Lens transparency	Cataract
<i>crygmx12</i> /NM_001013262	Lens	2.08	0.00005	-2.105		0.003*	Lens transparency	Cataract
<i>hsf4</i> /NM_001328208.1	Lens	3.34	0.00005*	-2.913		0.087	HSF family; DNA binding	Cataract

<sup>a</sup> qRT-PCR CT = CT value from qRT-PCR experiments;

\* p value

<sup>b</sup> = significance at the 0.05 level.