

UCSF

UC San Francisco Previously Published Works

Title

Cost-utility of revisions for cervical deformity correction warrants minimization of reoperations

Permalink

<https://escholarship.org/uc/item/3548p7nj>

Journal

Journal of Spine Surgery, 4(4)

ISSN

2414-469X

Authors

Horn, Samantha R
Passias, Peter G
Hockley, Aaron
[et al.](#)

Publication Date

2018-12-01

DOI

10.21037/jss.2018.10.02

Peer reviewed



Cost-utility of revisions for cervical deformity correction warrants minimization of reoperations

Samantha R. Horn¹, Peter G. Passias¹, Aaron Hockley¹, Renaud Lafage², Virginie Lafage², Hamid Hassanzadeh³, Jason A. Horowitz³, Cole A. Bortz¹, Frank A. Segreto¹, Avery E. Brown¹, Justin S. Smith⁴, Daniel M. Sciubba⁵, Gregory M. Mundis⁶, Michael P. Kelley⁷, Alan H. Daniels⁸, Douglas C. Burton⁹, Robert A. Hart¹⁰, Frank J. Schwab², Shay Bess¹¹, Christopher I. Shaffrey³, Richard A. Hostin¹², Christopher P. Ames¹³; International Spine Study Group

¹Department of Orthopaedics, NYU Langone Medical Center-Orthopaedic Hospital, New York, NY, USA; ²Department of Orthopaedic Surgery, Hospital for Special Surgery, New York City, NY, USA; ³Department of Orthopedic Surgery, ⁴Department of Neurosurgery, University of Virginia Medical Center, Charlottesville, VA, USA; ⁵Department of Orthopaedic Surgery, The Johns Hopkins Hospital, Baltimore, Maryland, USA; ⁶Department of Orthopaedic Surgery, Scripps Spine Center, La Jolla, California, USA; ⁷Department of Orthopaedic Surgery, Washington University Orthopedics, Chesterfield, MO, USA; ⁸Department of Orthopaedic Surgery, Brown University Medical Center, Providence, Rhode Island, USA; ⁹Department of Orthopaedic Surgery, University of Kansas Medical Center, Kansas City, Kansas, USA; ¹⁰Department of Orthopaedic Surgery, Swedish Neuroscience Institute, Seattle, WA, USA; ¹¹Department of Orthopaedic Surgery, Presbyterian/St. Luke's Medical Center, Rocky Mountain Hospital for Children, Denver, CO, USA; ¹²Department of Orthopaedic Surgery, Baylor Scoliosis Center, Dallas, Texas, USA; ¹³Department of Neurological Surgery, University of California, San Francisco, San Francisco, CA, USA

Contributions: (I) Conception and design: SR Horn, PG Passias, A Hockley, R Lafage, V Lafage, CI Shaffrey, RA Hostin, CP Ames; (II) Administrative support: International Spine Study Group; (III) Provision of study materials or patients: PG Passias, JS Smith, DM Sciubba, GM Mundis, MP Kelley, AH Daniels, DC Burton, RA Hart, FJ Schwab, S Bess, CI Shaffrey, RA Hostin, CP Ames; (IV) Collection and assembly of data: R Lafage, V Lafage, H Hassanzadeh, JA Horowitz; (V) Data analysis and interpretation: SR Horn, H Hassanzadeh, JA Horowitz, CA Bortz, FA Segreto, AE Brown; (VI) Manuscript writing: All authors; (VII) Final approval of manuscript: All authors.

Correspondence to: Peter G. Passias, MD. Departments of Orthopaedic and Neurological Surgery, New York Spine Institute, NYU Medical Center-Orthopaedic Hospital, 301 East 17th St., New York, NY 10003, USA. Email: Peter.Passias@nyumc.org.

Background: Cervical deformity (CD) surgery has become increasingly more common and complex, which has also led to reoperations for complications such as distal junctional kyphosis (DJK). Cost-utility analysis has yet to be used to analyze CD revision surgery in relation to the cost-utility of primary CD surgeries. The aim of this study was to determine the cost-utility of revision surgery for CD correction.

Methods: Retrospective review of a multicenter prospective CD database. CD was defined as at least one of the following: C2–C7 Cobb >10°, cervical lordosis (CL) >10°, cervical sagittal vertical axis (cSVA) >4 cm, chin-brow vertical angle (CBVA) >25°. Quality-adjusted life year (QALY) were calculated by EuroQol Five-Dimensions questionnaire (EQ-5D) and Neck Disability Index (NDI) mapped to SF-6D index and utilized a 3% discount rate to account for residual decline to life expectancy (men: 76.9 years, women: 81.6 years). Medicare reimbursement at 30 days assigned costs for index procedures (9+ level posterior fusion, 4–8 level posterior fusion with anterior fusion, 2–3 level posterior fusion with anterior fusion, 4–8 level anterior fusion) and revision fusions (2–3 level, 4–8 level, or 9+ level posterior refusion). Cost per QALY gained was calculated.

Results: Eighty-nine CD patients were included (61.6 years, 65.2% female). CD correction for these patients involved a mean 7.7±3.7 levels fused, with 34% combined approach surgeries, 49% posterior-only and 17% anterior-only, 19.1% three-column osteotomy. Costs for index surgeries ranged from \$20,001–55,205, with the average cost for this cohort of \$44,318 and cost per QALY of \$27,267. Eleven revision surgeries (mean levels fused 10.3) occurred up to 1-year, with an average cost of \$41,510. Indications for revisions were DJK (5/11), neurologic impairment [4], infection [1], prominent/painful instrumentation [1]. Average QALYs gained was 1.62 per revision patient. Cost was \$28,138 per QALY for reoperations.

Conclusions: CD revisions had a cost of \$28,138 per QALY, in addition to the \$27,267 per QALY for primary CD surgeries. For primary CD patients, CD surgery has the potential to be cost effective, with the caveats that a patient livelihood extends long enough to have the benefits and durability of the surgery is maintained. Efforts in research and surgical technique development should emphasize minimization of reoperation causes just as DJK that significantly affect cost utility of these surgeries to bring cost-utility to an acceptable range.

Keywords: Cervical deformity (CD); cost-utility; reoperation cost; cost; economic burden

Submitted Aug 13, 2018. Accepted for publication Oct 19, 2018.

doi: 10.21037/jss.2018.10.02

View this article at: <http://dx.doi.org/10.21037/jss.2018.10.02>

Introduction

Surgery for degenerative cervical spine conditions is increasing (1,2). Cervical deformity (CD) surgery is a subset of these cases and follows a similar epidemiological trend. A recent cost-utility analysis showed the average Medicare reimbursement (cost) per CD surgery to be just over \$55,000 dollars (3). As healthcare spending increases per capita and as a function of the GDP, it becomes increasingly necessary to critically examine the cost and cost-benefit ratio of interventions.

CD surgeries are technically demanding and require significant planning relating to the patient's pre-operative functional status, global and cervical alignment, and comorbidities. When clinically indicated, these surgeries can result in dramatic improvement in neurologic functionality and quality of life (4,5). Despite the meticulous planning there is a risk of revision surgery. Reasons for revision surgery after cervical spine reconstruction include infection, kyphotic deformity, distal junctional kyphosis (DJK), residual or recurrent neurological symptoms, adjacent segment disease, and pseudoarthrosis (6).

An accepted method for calculating the cost-effectiveness of an intervention is to establish the change in quality of life before and after the intervention using a general or disease specific validated questionnaire, and then calculating the cost for this intervention relative to a normalized unit gain in quality of life (3). The questionnaires can be general quality of life measures such as the EuroQol Five-Dimensions questionnaire (EQ-5D), or they can be disease specific metrics such as the Neck Disability Index (NDI). It can be difficult to accurately estimate the cost of an intervention such as spine surgery as there are numerous variables involved. However, one accepted method is to use total Medicare disbursement fees as a surrogate for the total

cost of the intervention.

The purpose of this study is to calculate the cost per quality-adjusted life year (QALY) after CD revision surgery, using Medicare reimbursement. Medicare reimbursements are widely accepted as a surrogate estimate for the cost of a given intervention, and allow for comparison across medical disciplines (7).

Methods

Data source

This study is a retrospective review of a prospectively-collected database of CD patients enrolled from 13 sites within the United States. Internal Review Board approval was obtained at the submitting site (No. S12-02939) and each participating site prior to study initiation and informed consent was given by each included patient. Inclusion criteria for the database were patients ages ≥ 18 years, and radiographic evidence of CD at baseline assessment, defined as the presence of at least 1 of the following: cervical kyphosis (C2–7 Cobb angle $>10^\circ$), cervical scoliosis (C2–7 coronal Cobb angle $>10^\circ$), C2–7 sagittal vertical axis (cSVA) >4 cm, or chin-brow vertical angle (CBVA) $>25^\circ$. CD patients meeting radiographic inclusion with available baseline and 1-year follow-up data were included in this study. Patients with active tumors or infections were excluded from the study.

Data collection

Demographic and clinical data collected included patient age, sex, body mass index (BMI), prior cervical surgery, and Charlson Comorbidity Index (CCI). Surgical data collected included operative time, estimated blood loss, surgical

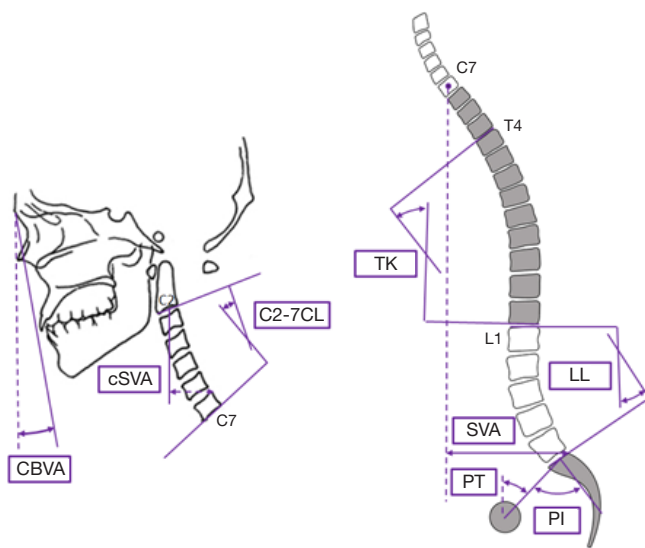


Figure 1 Schematic of the measured sagittal alignment parameters for the cervical (left) and global spinopelvic (right) spinal regions. cSVA, cervical sagittal vertical axis; CL, cervical lordosis; CBVA, chin-brow vertical angle; TK, thoracic kyphosis; LL, lumbar lordosis; SVA, sagittal vertical axis; PT, pelvic tilt; PI, pelvic incidence.

approach, off-label use of bone morphogenetic protein 2 (BMP-2), osteotomy use and number of osteotomies, levels fused, and instrumentation used.

Patients were evaluated using full-length free-standing lateral spine radiographs (36" long-cassette) at baseline and 1-year post-operative follow-up visit. Radiographs were analyzed using dedicated and validated software (SpineView[®]; ENSAM, Laboratory of Biomechanics, Paris, France) at a single center with standard techniques (8-10). Measured cervical spine parameters included cSVA (offset from the C2 plumbline and the posterosuperior corner of C7), C2–C7 lordosis [cervical lordosis (CL): Cobb angle between C2 inferior endplate and C7 inferior endplate], T1 slope minus CL (TS-CL: mismatch between T1 slope and CL), and CBVA (angle subtended between the vertical line and the line from the brow to the chin). C2–T3 lordosis (sagittal Cobb angle between C2 inferior endplate and T3 inferior endplate), C2–T3 SVA (offset from C2 plumbline and T3 inferior endplate), and C2 angle (subtended between upper endplate of C2 and the horizontal). Measured spinopelvic parameters (Figure 1) included: sagittal vertical axis (SVA: C7 plumb line relative to the posterior-superior corner of S1), pelvic incidence minus lumbar lordosis (PI-LL: mismatch between pelvic incidence and lumbar

lordosis), and pelvic tilt (PT: angle between the vertical and the line through the sacral midpoint to the center of the two femoral heads).

Cost calculations

The PearlDiver database, which gives 1-year Medicare reimbursement rates, was used to calculate costs using job order cost accounting ("charge analysis"). Each CD surgical procedure in the database used in this study was retrospectively assigned ICD-9 codes for both the primary surgery and any subsequent revision procedures (e.g., posterior cervical refusion 4–8 level: 81.33, 81.63; full list in Table 1). Medicare 1-year reimbursements from on the PearlDiver database were queried for those combinations of ICD-9 codes for each patient's procedures, and the average Medicare 1-year reimbursement was assigned. One-year reimbursement represents how much Medicare contributed to the hospital to cover all procedures until day 30, including the cost of postoperative complications, management in a follow-up clinic, and readmissions. Cervical procedures queried included: posterior cervical fusion (2–3 level; 4–8 level; or 9+ level) and anterior cervical fusion (2–3 level, 4–8 level, or 9+ level) for index and revision procedures.

Utility calculation

QALY was used to measure the quality of care (3,11). The QALYs gained were calculated using the following equation [Eq. [1]]:

$$QALYs\ gained = (Q^i - Q) \frac{1 - e^{-rL}}{r} \quad [1]$$

QALY is a measure of health-related quality of life (Q), which calculates the Q while taking into account the life expectancy (L) to determine health benefits, where e is Napier's mathematical constant and r is the discount rate. World Health Organization (WHO) recommends a discount rate of 3%, which was used in this analysis (12,13). Total utility gained by an intervention was calculated by a change in Q ($Q^i - Q$) and was multiplied by the life expectancy to determine total QALYs gained. Life expectancy was selected manually, based on US national averages for females (81.6 years) and males (76.9 years). QALY was calculated using a general health-state patient-reported quality of life metric, the EQ5D, as well as a questionnaire that is specific to neck-pain related disability,

Table 1 Breakdown of surgeries performed using ICD-9 coding and respective average 1-year Medicare reimbursement rates

Surgery	Procedure	ICD-9 code(s)	Medicare cost
Index surgery	9+ level posterior cervical fusion	81.03, 81.64	\$55,205
	❖ + BMP	81.03, 81.64, 84.52	\$52,592
	4–8 level posterior cervical fusion	81.03, 81.63	\$21,213
	❖ + 2–3 level anterior fusion	81.03, 81.62, 81.02	\$26,970
Revision surgery	9+ level posterior cervical fusion	81.33, 81.64	\$50,852
	❖ + BMP	81.33, 81.64, 84.52	\$55,988
	4–8 level posterior cervical fusion	81.33, 81.63	\$25,162

BMP, bone morphogenetic protein.

Table 2 Demographic factors for the whole cohort for the index surgery as well as the demographics specifically for the patients who underwent a revision procedure and those who did not

Patient factor	Index surgery—whole cohort (89 patients)	Index surgery only patients (78 patients)	Revision patients (11 patients)	P value
Age (years)	61.6±10.5	61.5±11.0	61.8±6.1	0.906
Sex (% female), n (%)	58 (65.2)	51 (65.4)	7 (63.6)	0.909
CCI	0.95±1.23	0.99±1.25	0.57±0.98	0.400
BMI (kg/m ²)	29.2±8.2	29.7±8.3	25.1±6.3	0.113
Prior cervical spine surgery, n (%)	34 (38.2)	30 (38.5)	4 (36.4)	0.869
Depression, n (%)	27 (30.3)	25 (32.1)	2 (18.2)	0.349
Diabetes, n (%)	7 (7.9)	7 (9.0)	0	0.301
Osteoporosis, n (%)	13 (14.6)	11 (14.1)	2 (18.2)	0.720
History of smoking, n (%)	26 (29.2)	26 (33.3)	0	0.017

P values reflect univariate comparison between revision and non-revision patient groups. CCI, Charlson Comorbidity Index; BMI, body mass index.

the NDI and the Modified Japanese Orthopedic Association Questionnaire (mJOA) which assesses overall functional status by way of degenerative cervical myelopathy. NDI was mapped to a SF-6D index value in order to translate the values into QALY (3,14,15).

Statistical analysis

Demographic and clinical variables were assessed using chi-squared and *t*-tests for categorical and continuous variables, respectively. Utility was calculated using both EQ-5D and NDI. Cost (dollars) per QALYs gained was calculated at 1-year post-operatively. Two-sided P values less than 0.05 were considered statistically significant. All statistical analyses were done using SPSS Version 23 (Armonk, NY).

Results

Patient demographics

Eighty-nine CD patients were included (61.6 years old, 65.2% female, BMI 29.2 kg/m², Table 2). The most common diagnoses for these CD patients were degenerative kyphosis (48.2%), stenosis or myelopathy (20.0%), and iatrogenic kyphosis (14.1%). Thirty-point-three percent of patients had depression, 29.2% had a history of smoking, and 14.6% had osteoporosis. Thirty-eight-point-six percent of patients had a prior cervical spine surgery.

For patients who underwent a revision surgery, the average age was 61.8 years, BMI was 25.1 kg/m², and CCI was 0.57. Thirty-six-point-four percent of patients who went on to have a revision surgery had prior cervical spine

Table 3 Radiographic parameters for the entire cohort

Radiographic factor	Pre-operative	1-year post-operative	Change	P value
Pelvic tilt (°)	19.50±12.00	18.86±11.33	-0.65±6.04	0.314
Pelvic incidence (°)	53.73±11.28	53.65±11.33	-0.08±1.97	0.711
PI-LL (°)	1.25±18.5	2.03±18.44	0.78±10.41	0.484
T4-T12 thoracic kyphosis (°)	-39.09±15.94	-42.87±15.28	-3.66±9.05	<0.001*
T1 slope (°)	30.03±17.17	35.21±14.56	4.68±10.42	<0.001*
TS-CL (°)	37.32±19.27	27.81±13.08	-9.22±18.35	<0.001*
C2-C7 lordosis (°)	-7.09±21.02	7.53±15.68	13.61±19.47	<0.001*
cSVA (mm)	46.05±24.91	41.33±17.62	-5.68±18.27	0.008*
C2-T3 angle (°)	-17.10±20.86	-0.91±17.56	15.30±23.31	<0.001*
C2-T3 SVA (mm)	78.06±40.22	77.2±27.65	-2.46±27.40	0.433
C2 slope (°)	37.81±20.50	26.76±13.90	-10.85±19.38	<0.001*
SVA (mm)	2.68±69.80	24.58±69.41	22.64±56.95	<0.001*

*, statistical significance to $P < 0.05$. PI-LL, pelvic incidence minus lumbar lordosis; TS-CL, T1 slope minus cervical lordosis; cSVA, cervical sagittal vertical axis; SVA, sagittal vertical axis.

surgery before enrollment.

Surgical details

CD correction for these patients involved a mean 7.7 ± 3.7 levels fused, with 34% combined approach surgeries, 49% posterior-only and 17% anterior-only. Eighteen (20.2%) of cases had a Smith-Peterson osteotomy and 17 (19.1%) of cases had a three-column osteotomy performed. Thirty-three (37.1%) cases used BMP-2. Overall, mean operative time was 525 ± 520 minutes and mean blood loss was 801 ± 933 mL. For patients that did not undergo revision, the median uppermost instrumented vertebra (UIV) and lowermost instrumented vertebra (LIV) following primary surgery were C2 and T2, respectively. For patients that would later require a revision surgery, the median UIV and LIV following primary surgery were C3 and T4, respectively. Following revision, the median UIV and LIV for these patients were C4 and T4, respectively. There were no significant differences between patients who required a reoperation and those who did not in operative time (465 vs. 533 min, respectively, $P = 0.686$) and blood loss (1,392 vs. 730 mL, $P = 0.075$) of index procedure.

Pre- and post-operative radiographic alignment

At baseline, there were no significant differences in any

radiographic parameters between revision and non-revision patients (all $P > 0.05$). In looking at pre- to post-operative changes in radiographic alignment, the whole cohort improved in TS-CL (37.32° to 27.81° , $P < 0.001$), cSVA (46.05 to 41.33 mm, $P = 0.008$), C2-T3 angle (-17.10° to -0.91° , $P < 0.001$) and saw an increase in global SVA (2.68 to 24.58 mm, $P < 0.001$, *Table 3*).

By contrast, patients who required a revision surgery did not achieve significant alignment correction at 1-year post-operatively (from their index surgery) in any major radiographic parameter (all $P > 0.05$, *Table 4*).

Health-related quality of life scores

Pre- and post-operative health-related quality of life scores did not differ between patients who later required a revision surgery and those who did not, with the exception of baseline EQ-5D scores (revision: 0.78 ± 0.07 , non-revision: 0.73 ± 0.06 , $P = 0.028$, *Table 5*).

Revision surgeries

Eleven patients underwent a revision procedure, making the revision rate in this CD cohort 12.4%. Indications for revisions were proximal or DJK (5/11), neurologic impairment [4], infection [1], prominent/painful instrumentation [1]. All revisions were posterior-only

Table 4 Radiographic changes for patients who underwent a revision surgery at some post-operative time point

Radiographic factor	Pre-operative	1-year post-operative	Change	P value
Pelvic tilt (°)	21.59±16.07	18.07±8.65	-3.52±9.84	0.263
Pelvic incidence (°)	56.28±11.10	56.55±9.86	0.27±2.41	0.722
PI-LL (°)	-1.59±19.37	-6.33±11.76	-4.74±13.18	0.260
T4-T12 thoracic kyphosis (°)	-42.79±12.19	-49.42±10.26	-5.19±10.31	0.146
T1 slope (°)	34.05±13.41	41.50±11.66	6.52±9.90	0.083
TS-CL (°)	39.55±23.84	35.36±18.2	1.53±24.39	0.855
C2-C7 lordosis (°)	-5.50±28.26	6.14±15.12	4.99±26.55	0.588
cSVA (mm)	57.44±16.22	51.76±16.72	-4.49±24.96	0.604
C2-T3 angle (°)	-21.04±23.94	-8.70±19.43	7.24±37.09	0.574
C2-T3 SVA (mm)	93.44±27.77	94.75±25.51	1.08±28.47	0.912
C2 slope (°)	40.91±24.81	35.60±19.53	0.32±27.98	0.973
SVA (mm)	-31.85±60.76	-11.97±90.85	28.49±80.14	0.317

PI-LL, pelvic incidence minus lumbar lordosis; TS-CL, T1 slope minus cervical lordosis; cSVA, cervical sagittal vertical axis; SVA, sagittal vertical axis.

Table 5 Health-related quality of life scores for the entire cohort compared from pre-operative to 1-year post-operative

Health-related quality of life instrument	Pre-operative	1-year post-operative	P value
NDI	48.54±16.74	37.22±20.13	<0.001*
mJOA	13.55±2.70	14.09±2.95	0.210
EQ-5D	0.73±0.06	0.78±0.07	<0.028*

*, statistical significance to $P < 0.05$. NDI, Neck Disability Index; mJOA, modified Japanese Orthopedic Association questionnaire; EQ-5D, EuroQol Five-Dimensions questionnaire.

surgeries, with an average of 10.3 levels fused (range, 2–27 levels). In looking at the time from the index surgery to the revision procedure, 3 patients underwent a revision in the immediate post-operative period, 1 patient had a revision within 3 months, 3 patients within 6 months and four patients within 1 year of index surgery. Average QALYs gained was 1.62 per revision patient.

Cost analysis

Costs for index surgeries ranged from \$20,001–\$55,205, with the average cost for this cohort of \$44,318 and cost per QALY of \$27,267 at 1-year follow-up and \$37,005 using NDI. Eleven revision surgeries (mean levels fused 10.3)

occurred up to 1 year, with an average cost of \$41,510. Cost was \$28,138 per QALY for reoperations when using EQ-5D. Using NDI mapped to SF-6D to calculate the QALY, the mean cost per QALY for revision surgery was \$24,949 gained upon reaching life expectancy and \$25,658 when using EQ-5D.

Case examples

Figure 2 displays a 53-year-old female CD patient who underwent a 9-level posterior fusion (~\$55,205) and then developed proximal junctional kyphosis (PJK) by 6 weeks post-operatively and underwent an 18-level revision procedure, with an estimated cost of \$50,852.

Figure 3 displays a 50-year-old male CD patient who underwent an 11-level posterior fusion, which was estimated at \$55,205. This patient did not require a re-operation for any complication.

Discussion

Health-care spending in the USA is currently at over 17% of the gross domestic product and continues to increase as a percentage of the GDP (16,17). While the absolute number is not as high in other Organisation for Economic Co-operation and Development (OECD) countries, the proportion of GDP spent on healthcare has been

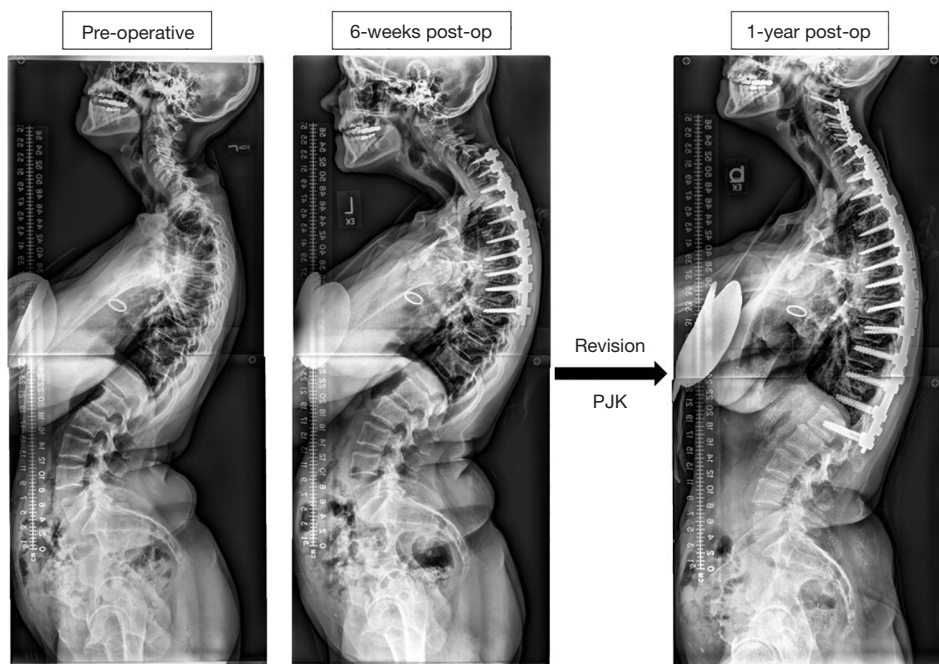


Figure 2 Case example of a 53-year-old female cervical deformity patient who underwent a 9-level posterior fusion (~\$55,205) and then developed proximal junctional kyphosis by 6 weeks post-operatively and underwent an 18-level revision procedure, with an estimated cost of \$50,852. PJK, proximal junctional kyphosis.

increasing steadily, and is projected to increase further in the future (16). As the population ages, we anticipate an increase overall demand for healthcare services, with a commensurate increase in costs (18). Thus, it is imperative to assess the return on investment for expensive and resource-heavy interventions such as CD surgery.

Spinal deformity surgery in appropriately selected patients can result in dramatic improvement in quality of life and global functioning (4,5). It is also a costly endeavor due to the complex nature of surgery, the costs associated with hospitalization, and the cost associated with instrumentation. A recent study reported that for index surgery for CD correction, cost per QALY gained up until 1-year follow-up was \$646,958 using EQ-5D and that these CD surgeries were within an acceptable range for cost-effectiveness (3). To date, thoracolumbar (TL) spine deformity surgery has been studied in much greater depth than CD surgery. A 4-year follow-up of TL deformity surgery by McCarthy *et al.* found the total cost of the initial procedure to be \$103,143, the total cost at 1 year to be \$111,807, and \$126,323 at 4-year follow-up (19). A cost-utility analysis by the same group priced the average cost per QALY was \$164,261 at 1 year

and \$154,865 at 2 years for TL deformity surgery (20). Perhaps not unexpectedly, the cost for CD surgery in our cohort was found to be significantly less than the cost quoted in the literature for TL deformity surgery. It would be interesting to further examine where this difference in cost of the index surgery is occurring. In addition, our cost per QALY was lower than previous published literature for CD. However, when analyzing the cost per QALY for a full patient life expectancy, a 5-year life expectancy, and 10-year life expectancy, our cost per QALY was comparable.

Discounting is the mathematical function whereby future health-benefits or outcomes are converted to their present day values (21). A discount rate of 3% which has been commonly used in the CE assessment cervical spine surgery (7,22). It has been previously shown that the spine region specific NDI metric can be accurately mapped to the general health SF-6D index (15,23). The SF-6D index can then be used to obtain QALYs for use in cost-effectiveness studies. We have used the EQ-5D as well as the NDI mapped to SF-6D as the independent variables to calculate QALYs gained, in conjunction with a fixed 3% discount rate that is recommended by the World Health Organization (13).

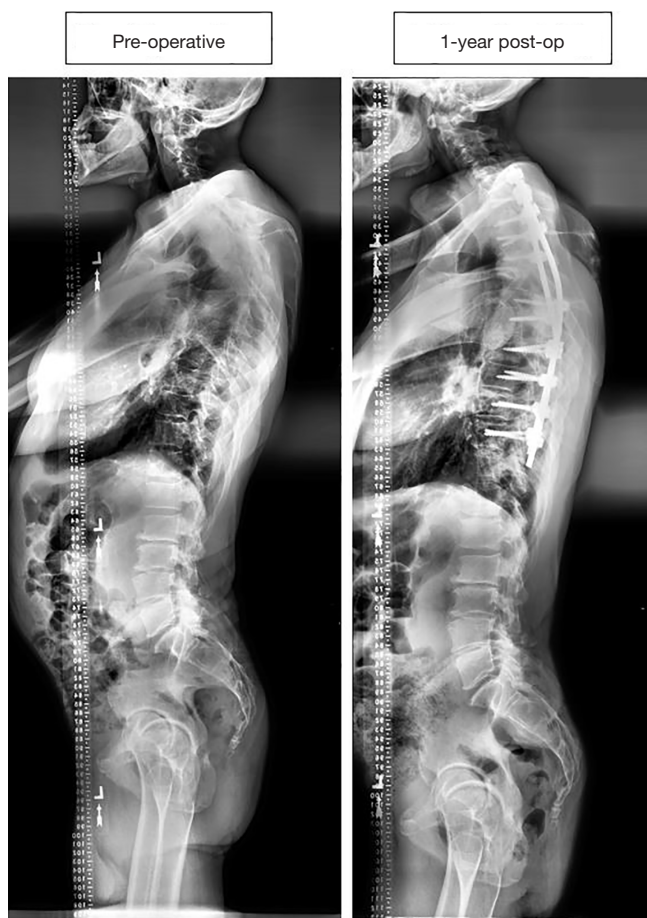


Figure 3 Case example of a 50-year-old male CD patient who underwent an 11-level posterior fusion, which was estimated at \$55,205. This patient did not require a re-operation for any complication. CD, cervical deformity.

In our cohort of 89 patients, 11 (12.4%) required revision surgery within 1-year of the index surgery, the majority of which were due to DJK and neurologic impairment. The average cost for revision surgery was \$44,310 and the cost per QALY was \$27,267. Moreover, the revision surgeries tended to be as large as the primary surgeries with a mean of 10.3 levels fused. Clearly, a revision surgery event has a significant effect on the cost-effectiveness of the primary intervention. DJK was the most common reason for revision in our cohort, and demonstrates the need for further understanding and prevention strategies in order to mitigate the patient and cost burden. The incidence of DJK in the CD population has not been well established. Currently, it is estimated at approximately 24% of CD patients undergoing surgical correction (24,25). It is likely that

DJK is the CD corollary problem of PJK in TL deformity surgery. PJK prevention and mitigation techniques should be considered in patients undergoing CD surgery. As a comparator, over a 4-year follow-up period, around 27% of patients undergoing surgery for TL deformity surgery were readmitted for additional spine related intervention after their index surgery (19). Our rate of reoperation was 12.4% over the first year, clearly it remains to be seen if the reoperation rate for CD surgery approaches that of TL deformity over time.

Limitations

We appreciate several limitations. Firstly, the retrospective nature of this study might contribute to site and surgeon variation and bias, though this can also offer increased generalizability of the findings given that the sites are across the continental United States. Secondly, the relatively small sample size and limited follow-up, while limiting, also sets the framework for future studies. The cost data used in this study was derived from a Medicare population, which are potentially older and more comorbid overall in comparison to our study cohort. This might mean that more complications occurred for the Medicare population and thus reimbursement rates were higher. Additionally, Medicare reimbursement rates do not cover expenses that are non-billable. Lastly, as no previous studies have mapped mJOA score to either EQ-5D or SF-6D (both validated metrics used to generate health-state utility scores), we were unable to incorporate mJOA into our economic analysis. Health-state utility scores are necessary for effective economic evaluation, and as such, future research should aim to map mJOA outcomes to the SF-6D to better facilitate cost-effectiveness evaluations for cervical surgery patients with myelopathy.

Conclusions

CD revisions had a cost of \$28,138 per QALY, in addition to the \$27,267 per QALY for primary CD surgeries. For primary CD patients, CD surgery has the potential to be cost effective, with the caveats that a patient livelihood extends long enough to have the benefits and durability of the surgery is maintained. Efforts in research and surgical technique development should emphasize minimization of reoperation causes just as DJK that significantly affect cost utility of these surgeries to bring cost-utility to an acceptable range.

Acknowledgements

None.

Footnote

Conflicts of Interest: The International Spine Study Group (ISSG) is funded through research grants from DePuy Synthes, and supported the current work. The other authors have no conflicts of interest to declare.

Ethical Statement: Internal Review Board approval was obtained at the submitting site (No. S12-02939) and each participating site prior to study initiation and informed consent was given by each included patient.

References

- Oglesby M, Fineberg SJ, Patel AA, et al. Epidemiological trends in cervical spine surgery for degenerative diseases between 2002 and 2009. *Spine (Phila Pa 1976)* 2013;38:1226-32.
- McCarthy I, Hostin R, O'Brien M, et al. Health economic analysis of adult deformity surgery. *Neurosurg Clin N Am* 2013;24:293-304.
- Poorman GW, Passias PG, Qureshi R, et al. Cost-utility analysis of cervical deformity surgeries using 1-year outcome. *Spine J* 2018;18:1552-7.
- Passias PG, Horn SR, Bortz CA, et al. The Relationship Between Improvements in Myelopathy and Sagittal Realignment in Cervical Deformity Surgery Outcomes. *Spine (Phila Pa 1976)* 2018;43:1117-24.
- Sabou S, Mehdian H, Pasku D, et al. Health-related quality of life in patients undergoing cervico-thoracic osteotomies for fixed cervico-thoracic kyphosis in patients with ankylosing spondylitis. *Eur Spine J* 2018;27:1586-92.
- Koerner JD, Kepler CK, Albert TJ. Revision surgery for failed cervical spine reconstruction: review article. *HSS J* 2015;11:2-8.
- Alvin MD, Miller JA, Lubelski D, et al. Variations in cost calculations in spine surgery cost-effectiveness research. *Neurosurg Focus* 2014;36:E1.
- Champain S, Benchikh K, Nogier A, et al. Validation of new clinical quantitative analysis software applicable in spine orthopaedic studies. *Eur Spine J* 2006;15:982-91.
- Rillardon L, Levassor N, Guigui P, et al. Validation of a tool to measure pelvic and spinal parameters of sagittal balance. *Rev Chir Orthop Reparatrice Appar Mot* 2003;89:218-27.
- O'Brien MF, Kuklo TRTR, Blanke KM, et al. Spinal Deformity Study Group Radiographic Measurement Manual. 2005. Available online: <http://www.oref.org/docs/default-source/default-document-library/sdsg-radiographic-measurement-manual.pdf?sfvrsn=2>
- Sassi F. Calculating QALYs, comparing QALY and DALY calculations. *Health Policy Plan* 2006;21:402-8.
- WHO-CHOICE. Making choices in health: WHO guide to cost-effectiveness analysis. Global Programme on Evidence for Health Policy, World Health Organization Geneva [Internet]. 2003;71. Available online: http://www.who.int/choice/publications/p_2003_generalised_cea.pdf
- Murray CJ. Quantifying the burden of disease: the technical basis for disability-adjusted life years. *Bull World Health Organ* 1994;72:429-45.
- Vernon H, Mior S. The Neck Disability Index: a study of reliability and validity. *J Manipulative Physiol Ther* 1991;14:409-15. Erratum in: *J Manipulative Physiol Ther* 1992;15(1):followi.
- Zheng Y, Tang K, Ye L, et al. Mapping the neck disability index to SF-6D in patients with chronic neck pain. *Health Qual Life Outcomes* 2016;14:21.
- Dieleman JL, Templin T, Sadat N, et al. National spending on health by source for 184 countries between 2013 and 2040. *Lancet* 2016;387:2521-35.
- OECD (2018), OECD.Stat, (database). Available online: <https://data.oecd.org/healthres/health-spending.htm>
- Knickman JR, Snell EK. The 2030 problem: caring for aging baby boomers. *Health Serv Res* 2002;37:849-84.
- McCarthy IM, Hostin RA, Ames CP, et al. Total hospital costs of surgical treatment for adult spinal deformity: an extended follow-up study. *Spine J* 2014;14:2326-33.
- McCarthy I, O'Brien M, Ames C, et al. Incremental cost-effectiveness of adult spinal deformity surgery: observed quality-adjusted life years with surgery compared with predicted quality-adjusted life years without surgery. *Neurosurg Focus* 2014;36:E3.
- Sanders GD, Neumann PJ, Basu A, et al. Recommendations for Conduct, Methodological Practices, and Reporting of Cost-effectiveness Analyses: Second Panel on Cost-Effectiveness in Health and Medicine. *JAMA* 2016;316:1093-103.
- Ament JD, Yang Z, Nunley P, et al. Cost Utility Analysis of the Cervical Artificial Disc vs Fusion for the Treatment of 2-Level Symptomatic Degenerative Disc Disease: 5-Year Follow-up. *Neurosurgery* 2016;79:135-45.
- Carreon LY, Anderson PA, McDonough CM, et al.

- Predicting SF-6D utility scores from the neck disability index and numeric rating scales for neck and arm pain. *Spine (Phila Pa 1976)* 2011;36:490-4.
24. Passias PG, Oh C, Horn SR, et al. Predicting the Occurrence of Complications Following Corrective Cervical Deformity Surgery: Analysis of a Prospective Multicenter Database Using Predictive Analytics. *Spine J* 2017;17:S242-3.
25. Passias PG, Vasquez-Montes D, Poorman GW, et al. Predictive model for distal junctional kyphosis after cervical deformity surgery. *Spine J* 2018. [Epub ahead of print].

Cite this article as: Horn SR, Passias PG, Hockley A, Lafage R, Lafage V, Hassanzadeh H, Horowitz JA, Bortz CA, Segreto FA, Brown AE, Smith JS, Sciubba DM, Mundis GM, Kelley MP, Daniels AH, Burton DC, Hart RA, Schwab FJ, Bess S, Shaffrey CI, Hostin RA, Ames CP; International Spine Study Group. Cost-utility of revisions for cervical deformity correction warrants minimization of reoperations. *J Spine Surg* 2018;4(4):702-711. doi: 10.21037/jss.2018.10.02