

UCSF

UC San Francisco Previously Published Works

Title

Metal-isotope-tagged monoclonal antibodies for high-dimensional mass cytometry

Permalink

<https://escholarship.org/uc/item/34j2k11p>

Journal

Nature Protocols, 13(10)

ISSN

1754-2189

Authors

Han, Guojun
Spitzer, Matthew H
Bendall, Sean C
[et al.](#)

Publication Date

2018-10-01

DOI

10.1038/s41596-018-0016-7

Peer reviewed



Published in final edited form as:

Nat Protoc. 2018 October ; 13(10): 2121–2148. doi:10.1038/s41596-018-0016-7.

Metal-isotope-tagged monoclonal antibodies for high-dimensional mass cytometry

Guojun Han¹, Matthew H. Spitzer², Sean C. Bendall³, Wendy J. Fantl⁴, Garry P. Nolan^{1,*}

¹Baxter Laboratory for Stem Cell Biology, Department of Microbiology and Immunology, Stanford University School of Medicine, Stanford, CA, USA.

²Department of Microbiology and Immunology, University of California, San Francisco, San Francisco, CA, USA.

³Department of Pathology, Stanford University School of Medicine, Stanford, CA, USA.

⁴Department of Obstetrics and Gynecology, Stanford University School of Medicine, Stanford, CA, USA.

Abstract

Advances in single-cell mass cytometry have increasingly improved highly multidimensional characterization of immune cell heterogeneity. The immunoassay multiplexing capacity relies on monoclonal antibodies labeled with stable heavy-metal isotopes. To date, a variety of rare-earth elements and noble and post-transition metal isotopes have been used in mass cytometry; nevertheless, the methods used for antibody conjugation differ because of the individual metal coordination chemistries and distinct stabilities of various metal cations. Herein, we provide three optimized protocols for conjugating monoclonal IgG antibodies with 48 high-purity heavy-metal isotopes: (i) 38 isotopes of lanthanides, 2 isotopes of indium, and 1 isotope of yttrium; (ii) 6 isotopes of palladium; and (iii) 1 isotope of bismuth. Bifunctional chelating agents containing coordinative ligands of monomeric DOTA (1,4,7,10-tetraazacyclododecane-1,4,7,10-tetraacetic acid) or polymeric pentetic acid (DTPA) were used to stably sequester isotopic cations in aqueous solutions and were subsequently coupled to IgG antibodies using site-specific biorthogonal reactions. Furthermore, quantification methods based on antibody inherent absorption at 280 nm and on extrinsic absorption at 562 nm after staining with bicinchoninic acid (BCA) are reported to determine metal-isotope-tagged antibodies. In addition, a freeze-drying procedure to prepare

Reprints and permissions information is available at www.nature.com/reprints.

***Correspondence and requests for materials** should be addressed to G.P.N. gnolan@stanford.edu.

Author contributions

G.H. developed EMTs and conjugation protocols, performed the experiments, and wrote the manuscript. M.H.S. performed mouse experiments with bismuth mass tags and performed data analysis. S.C.B. provided advice and assistance with the manuscript. W.J.F. provided advice and assistance with the manuscript. G.P.N. helped design the experiments and edited the manuscript.

Competing interests

G.P.N. declares that he had a personal financial interest in Fluidigm, the manufacturer of the mass cytometer used in this study, for the duration of this project. The remaining authors declare no competing interests.

Supplementary information is available for this paper at <https://doi.org/10.1038/s41596-018-0016-7>.

Publisher's note: Springer Nature remains neutral with regard to jurisdictional claims in published maps and institutional affiliations.

Related links

1. Han, G. et al. *Cytometry A* **91**, 1150–1163 (2017): <https://doi.org/10.1002/cyto.a.23283>
2. Porpiglia, E. et al. *Nat. Cell Biol.* **19**, 558–567 (2017): <https://doi.org/10.1038/ncb3507>

palladium isotopic mass tags is described. To demonstrate the utility, experiments using six palladium-tagged CD45 antibodies for barcoding assays of live immune cells in cytometry by time-of-flight (CyTOF) are described. Conjugation of pure isotopes of lanthanides, indium, or yttrium takes ~3.5 h. Conjugation of bismuth takes ~4 h. Preparation of palladium mass tags takes ~8 h. Conjugation of pure isotopes of palladium takes ~2.5 h. Antibody titration takes ~4 h.

Introduction

Elemental mass tags in CyTOF

Cytometric technology has facilitated the investigation of multiple features of heterogeneous biological systems at the single-cell level^{1,2}. Mass cytometry, or CyTOF, has been regarded as the ‘next generation’ of flow cytometry because it uses metal-isotope-tagged antibodies (MitAbs) as reporting probes^{3–6}. Using this advance, CyTOF overcomes the inherent limits of spectral overlap observed with conventional fluorescence-based cytometry and enables simultaneous measurements of >50 parameters in single cells^{7–12}. In principle, mass cytometry originates from inductively coupled plasma TOF mass spectrometry (ICP-TOF-MS), which is broadly used for quantifying isotopic contents of elements having low ionization potentials in the periodic table^{13–15}. To enable biomedical assays, elemental mass tags (EMTs) have been introduced for CyTOF to label biomolecular targets or probes of interest with specific elements or isotopes. A quantitative relationship is established between the concentration of targeted biomolecules and the intensity of the detection signal of the corresponding EMTs^{16–22}.

To minimize background signals, EMTs are generally composed of exogenous cellular elements such as noble and post-transition metals, rare-earth elements, and halogens, rather than the essential elements of endogenous cellular components such as sodium, potassium, calcium, copper, iron, and zinc. To date, the tagging elements and isotopes investigated in CyTOF have involved yttrium (Y)^{23,24}, indium (In)^{4,25}, the series of lanthanide elements (Ln, from La to Lu, except Pm)^{4,9,26}, iodine (I)²⁷, cadmium (Cd)^{4,21}, tellurium (Te)^{28–30}, silver (Ag)³¹, palladium (Pd)^{25,32,33}, rhodium (Rh)³⁴, iridium (Ir)³⁴, platinum (Pt)^{35,36}, ruthenium (Ru)^{37,38}, osmium (Os)³⁸, and bismuth (Bi)^{39,40}. Basically, EMTs have two fundamental utilities: (i) measurement of the expressions of cellular proteins or their modifications and (ii) characterization of cell functions relating to viability³⁵ and cell cycle²⁷, as well as for high-throughput cell barcode³². Figure 1 illustrates the most widely used and commercially available EMTs in current CyTOF applications. The different utilities of EMTs are dependent on their chelation properties in antibody conjugation or biochemical functions in cell biology, such as incorporation of 5-iodo-2'-deoxyuridine (IdU) into the newly synthesized nucleic acids²⁷. The metal isotopes used in protein-detection mass tags require substantial validation, as the presence of these tagged metallic cations may alter the specificity of antibody to recognize its antigen⁴¹.

Metal isotopes used in protein-detection mass tags

Although CyTOF has minimal overlap signals compared with fluorescence-based cytometry, the spillover effects still exist among different detection channels⁴². Therefore, the preparation of MitAbs must be evaluated for (i) impurities in the enriched isotopes; (ii) ‘M ±

1' spillover between neighbor channels, referred as abundance sensitivity; and (iii) 'M + 16' spillover of oxide formation. To date, 48 isotopes coming from 18 heavy metals have been conjugated to monoclonal IgG antibodies and are widely used in single-cell CyTOF immunoassays. The isotopic purities of Y, Pd, In, La, Ce, Pr, Nd, Sm, Eu, Gd, Tb, Dy, Ho, Er, Tm, Yb, Lu, and Bi, which are typically used in our lab (<https://nolanlab.stanford.edu/cytofisotopes>), are shown in Fig. 2. The purified isotopes are produced using electromagnetic separation by Trace Science International. Most of these isotopes are enriched by >95% and some are available at purities higher than 99%. There are six monoisotopic elements that show 100% abundance: ^{89}Y , ^{141}Pr , ^{159}Tb , ^{165}Ho , ^{169}Tm , and ^{209}Bi .

The series of lanthanides are the most widely used for EMTs because they have similar chemical properties and 38 stable isotopes that can be conjugated to antibodies using the same protocol. An issue with lanthanides is that oxide formation of the light lanthanides (from 139 to 160 AMU) causes mass interferences with the heavy lanthanides (from 155 to 176 AMU). This is referred to as the 'M + 16' effect. For example, $^{141}\text{Pr}^{16}\text{O}^+$ ions have spillover signal in the $^{157}\text{Gd}^+$ detection channel. Table 1 shows the oxide species of light lanthanides and the relative ratios⁴³ that result in spillover signals in the CyTOF detection channels of the heavy lanthanides. In CyTOF tuning procedures, radiofrequency power, flow speeds and makeup of nebulization gas, and positions of the sample torch and cone can be optimized so that the oxidation ratio of lanthanum ($^{139}\text{La}^{16}\text{O}^+ / ^{139}\text{La}^+$), the most easily oxidized isotope, remains <3.0%^{3,18}. Isotopes of ^{89}Y , ^{102}Pd , ^{104}Pd , ^{105}Pd , ^{106}Pd , ^{108}Pd , ^{110}Pd , ^{113}In , ^{115}In , and ^{209}Bi do not generate oxidation mass interferences with each other or with light or heavy lanthanides.

Comparison of metal isotope chelation methods

In order to site-specifically attach metal cations to an antibody, bifunctional chelating agents (BFCAs, Fig. 3a,b) are used. These agents consist of two functional groups: (i) the coordinative chelator, either DOTA or DTPA, which enables chelation of metal cations; and (ii) a maleimide-functionalized group, which enables coupling to sulfhydryl groups located in the hinge region between two heavy chains of the IgG antibody that is partially reduced under mild conditions. As some monoclonal antibodies have primary amine groups within the antigen-binding sites, sulfhydryl-reactive BFCAs have less effect on antigen-binding affinities of antibodies than do amine-reactive BFCAs. To increase the number of metal-chelating cations, polymeric BFCAs with multiple chelation sites along the backbone are developed⁴⁴⁻⁴⁶.

DOTA and DTPA are polyaminocarboxylates with multiple oxygen and nitrogen donors that can form stable complexes with trivalent cations of Y, In, Ln, and Bi. The stability constant values (log K) of the complexes of DOTA and lanthanides in water are >22.8 (ref.⁴⁷). It is important that the buffers used for chelating these cations be substantially different. Y^{3+} , Ln^{3+} , and Ln^{3+} cations are stable in ammonium acetate buffer (pH 5.5 to 6.0), whereas Bi^{3+} cations will precipitate in this buffer because of hydrolysis. The optimal condition for chelating Bi^{3+} cation to DTPA is placement in 2–5% (vol/vol) nitric acid. The complex of DTPA with Bi^{3+} cation has a distinct feature of the UV-visible absorption spectrum in the

range from 250 to 300 nm, which interferes with protein absorption at 280 nm. As a result, although the same BFCA (Maxpar X8 polymer) is used, the antibody conjugation protocol and quantification method for Bi are different from those of Y, In, and Ln, as shown in Fig. 3d.

Polymeric BFCAs can label more metal cations to an antibody than monomeric BFCAs can; however, macromolecular structure and large stereoscopic volumes may affect antibody recognition ability of the antigen. It has been reported that antibodies conjugated with Pd²⁺ cations using polymeric BFCAs lose their immune specificities⁴¹. Conversely, the loss of antigen-binding specificity does not appear to be an issue when using monomeric BFCAs that have smaller molecular structures, e.g., isothiocyanobenzyl-EDTA (SCN-Bn-EDTA, molecular weight (MW) 439 Da) was successfully used to conjugate CD45 antibodies with palladium isotopic cations for barcoding assays of live cells²⁵. A previous study of palladium complexes of aminopolycarboxylic ligands in aqueous solution reported that DTPA complex with Pd²⁺ is more stable (log K of 36.31) than EDTA complex with Pd²⁺ (log K of 23.60)⁴⁸. Therefore, in this presented protocol, monomeric BFCA of maleimide-functionalized-DOTA was used to chelate Pd²⁺ isotopic cations and was conjugated to the monoclonal antibody, as illustrated in Fig. 3a,c.

Limitations of metal-isotope-tagged antibodies

The newest version of CyTOF (Helios) can simultaneously detect 135 channels with a mass range from 75 to 209 Da. However, the number of channels used to measure surface or intercellular proteins is currently <50, because of the lack of the available mass tags. Although nanoparticle-based mass tags such as metal-embedding nanocrystals, quantum dots, and polymer dots have been considered promising^{49–53}, their routine usage in mass cytometry for single-cell immunoassays still requires more validation because of the inherent issue of nanoparticles, i.e., nonspecific physical absorption easily produces false-positive signals in negative-control cells. Furthermore, the large stereoscopic volumes of nanoparticles will result in inefficient diffusion through cell membranes.

At present, detection sensitivities in most of MitAbs are comparable to those of fluorochrome-tagged antibodies but are lower than those using high-sensitive fluorescent reporters such as phyco-erythrin (PE) dyes¹³. It is necessary to increase the number of tagged metal cations per antibody for a lower limit of detection. In addition, it should be noted that the protocols presented here are suitable only for IgG immunoglobulins. The protocols involve the reduction procedure of disulfide bonds, which may alter the abilities of IgE or IgM immunoglobulins that contain cross-linking disulfide bonds for their immunity structures.

Applications in single-cell CyTOF immunoassays

In mass cytometry, MitAbs have been widely used to detect cell surface, cytoplasmic, and nuclear proteins for immune phenotyping and signaling pathway profiling. The single-cell CyTOF-based investigations have been involved in the fields of basic and clinic immunology^{54–59}, cancer cell biology^{60–63}, stem cell biology^{64–66}, pharmaceutical development^{67–69}, and elemental biodistribution research^{70–73}. The detection sensitivity of a

particular MitAb is dependent on the ionization potential and the ion transmission efficiency of the tagged metal isotope. To obtain high signal-to-noise ratios, antibody panels are optimized to pair antibodies against different expression-level biomarkers with metal isotopes of different sensitivities^{23,74,75}. Two general guidelines are followed. First, biomarkers expected to be of high abundance and thus readily detected (e.g., CD45, CD3, and CD20) are paired with low-sensitivity isotopes (⁸⁹Y, ^{102–110}Pd, ¹¹³In, and ¹¹⁵In) or medium-sensitivity isotopes (^{139–152}Ln). Those biomarkers expected to be of low abundance or difficult to detect (e.g., CD56, p-STAT3, and interferon- γ (IFN γ)) are paired with high-sensitivity isotopes (^{153–176}Ln and ²⁰⁹Bi). Second, care should be taken to avoid pairing a low-abundance biomarker with an isotope that has overlap with the oxide of an isotope conjugated to a high-abundance biomarker.

Experimental design

We describe three procedures for conjugation of metal mass tags to monoclonal antibodies for use in high-dimensional mass cytometry. These provide detailed descriptions of the preparation of metal isotopic mass tags, conjugation of IgG antibodies with 48 pure metal isotopes, and quantification methods for the conjugated antibodies. Equipment, including a lyophilizer and mass cytometers, is shown in Fig. 4. Procedures for single-cell immunoassays of CyTOF are also described.

Antibody conjugation and quantification—Box 1 describes the preparation of monomeric BFCA mass tags containing six palladium isotopes using a freeze-drying process. The polymeric BFCA Maxpar X8 polymers were used to conjugate antibodies with the other 42 metal isotopes. Box 2 describes two quantification methods to determine the concentrations of conjugated antibodies. Sections 1, 2, and 3 in the Procedure describe the conjugation of IgG antibodies with metal isotopes of (i) palladium; (ii) lanthanide, yttrium, and indium; and (iii) bismuth, respectively. The timings for these conjugations are summarized in Fig. 5.

Characterization and applications of palladium isotopic mass tags—To characterize the synthesized palladium isotopic mass tags (Pd@mal-DOTA), consisting of palladium isotopic cations (Pd²⁺) and maleimido-mono-amide-DOTA (mal-DOTA), single quadrupole electrospray ionization mass spectrometry (ESI-MS) was used to identify the MW of each palladium isotopic complex, as shown in Fig. 6. Because palladium isotopes have low sensitivities in CyTOF and monomeric mal-DOTA is used to conjugate antibody, palladium isotopic mass tags are suitable for pairing with cellular biomarkers expressed at high levels, such as CD45 in immune cells. In mass cytometry, live-cell barcoding is very important for a reliable comparison between experimental samples; this high-throughput technology overcomes variations in cell staining and CyTOF measurements. Therefore, to demonstrate the utility of palladium isotopic mass tags, CD45 antibody was conjugated with ¹⁰²Pd, ¹⁰⁴Pd, ¹⁰⁵Pd, ¹⁰⁶Pd, ¹⁰⁸Pd, and ¹¹⁰Pd, and was used for live Jurkat cell barcoding. In addition, three strategies for staining combinations were designed for multiplexed barcoding: (i) 6-choose-1, with 6 multiplexing; (ii) 6-choose-2, with 15 multiplexing; and (iii) 6-choose-3, with 20 multiplexing. The measurements of CyTOF ‘rain dots’ and analysis of biaxial contour plots are shown in Fig. 7.

Titration of surface and intracellular antibodies—It is critical to choose appropriate cell populations as positive and negative controls to validate and titrate the conjugated antibodies. When using samples of human or mouse peripheral blood mononuclear cells (PBMCs), the positive and negative controls can be identified by gating the subset populations, e.g., to validate an antibody against human CD3, the positive control could be CD2⁺CD5⁺ human T cells and the negative control could be CD19⁺CD20⁺ human B cells, or to validate an antibody against mouse MHC class II, the positive control could be CD4⁻CD8⁻CD45R⁺ mouse B cells and the negative control could be CD4⁺ or CD8⁺ mouse T cells. For antibodies against stimulation-inducible intracellular molecules (e.g., pSTAT3) or against secreted molecules (e.g., IFN- γ), appropriate stimulation conditions (e.g., interleukin (IL)-10, IL-12, or IL-18) are applied as positive controls, as shown in Fig. 8.

Comparisons of bismuth- and lanthanide-tagged antibodies—To validate the measurement accuracy of bismuth-tagged antibody in high-dimensional CyTOF assays, the same antibodies were conjugated with both bismuth and lanthanide mass tags: (i) human anti-CD3 tagged with ²⁰⁹Bi and ¹⁷⁰Er, (ii) human anti-CD56 tagged with ²⁰⁹Bi and ¹⁷⁶Yb, and (iii) mouse anti-MHC class II tagged with ²⁰⁹Bi and ¹⁷⁶Yb. Experiments were carried out in Jurkat cells, human PBMCs, and immune cells of mouse organs. The comparisons of the analysis results using biaxial scatter plots, heat maps, viSNE plots, and scaffold maps were performed as shown in Figs. 9 and 10.

Materials

Reagents

Palladium conjugation

- Tris-(2-carboxyethyl)phosphine hydrochloride (TCEP; Thermo Fisher Scientific, cat. no. 77720)
- C-buffer for antibody conjugation (Maxpar Labeling Kits; Fluidigm)
- W-buffer for washing conjugated antibodies (Maxpar Labeling Kits; Fluidigm)
- Antibody stabilizer (Candor Biosciences, cat. no. 131050)
- Zeba 7-kDa 0.5-mL spin desalting columns (Thermo Fisher Scientific, cat. no. 89883)

Lanthanide, yttrium, and indium conjugation

- Tris-(2-carboxyethyl)phosphine hydrochloride (TCEP; Thermo Fisher Scientific, cat. no. 77720)
- Maxpar X8 polymer (Maxpar Labeling Kits; Fluidigm)
- L-buffer for chelation of polymers (Maxpar Labeling Kits; Fluidigm)
- R-buffer for partial reduction of antibodies (Maxpar Labeling Kits; Fluidigm)
- C-buffer for antibody conjugation (Maxpar Labeling Kits; Fluidigm)
- W-buffer for washing conjugated antibodies (Maxpar Labeling Kits; Fluidigm)

- Antibody stabilizer (Candor Biosciences, cat. no. 131050)
- Isotope-enriched lanthanide (III) solution (Fluidigm, catalog number varies by isotope)
- Isotope-enriched lanthanide (III) nitrates or chlorides (Trace Sciences International)
- Yttrium (III) nitrate tetrahydrate (Sigma-Aldrich, cat. no. 217239–10G)
- Isotope-enriched indium (III) chlorides (Trace Sciences International)

Bismuth conjugation

- Tris-(2-carboxyethyl)phosphine hydrochloride (TCEP; Thermo Fisher Scientific, cat. no. 77720)
- Maxpar X8 polymer (Maxpar Labeling Kits; Fluidigm)
- R-buffer for partial reduction of antibodies (Maxpar Labeling Kits; Fluidigm)
- C-buffer for antibody conjugation (Maxpar Labeling Kits; Fluidigm)
- W-buffer for washing conjugated antibodies (Maxpar Labeling Kits; Fluidigm)
- Antibody stabilizer (Candor Biosciences, cat. no. 131050)
- Nitric acid (HNO₃; Sigma-Aldrich, cat. no. 225711)
- Bismuth (III) nitrate pentahydrate (Sigma-Aldrich, cat. no. 254150)

Purified antibodies

- 100 µg of IgG antibody in low-sodium azide buffer (carrier-free) with specificity of choice, such as purified anti-human CD45 antibody (BD Biosciences, cat. no. 555480); purified anti-human CD3 antibody (BioLegend, cat. no. 300416); purified anti-human p-STAT3 antibody (BD Biosciences, cat. no. 612357); purified anti-human p-histone H3 antibody (BioLegend, cat. no. 650802); purified anti-human IFN-γ antibody (BD Biosciences, cat. no. 554698); or purified anti-mouse MHC class II antibody (BioLegend, cat. no. 107637). We provide a list of antibodies used in CyTOF assays in Supplementary Table 1. Store according to the manufacturer's instructions. ▲ **CRITICAL** The antibodies must be free of cysteine-containing carrier proteins (e.g., BSA) for efficient conjugation, as the carrier may compete for maleimide-functionalized groups. If a carrier is present, antibody cleanup kits (e.g., Abcam BSA Removal Kit, cat. no. ab173231; Melon Gel IgG Spin Purification Kit, Thermo Fisher Scientific, cat. no. 45206) can be used for antibody purification.

Cell assays

- Jurkat Clone E6–1 human T lymphocyte cell line (ATCC, cat. no. TIB-152). Human and mouse PBMCs are isolated from whole blood using Ficoll-Paque density gradient centrifugation. Cell suspensions from tissues or organs are prepared as previously described^{9,39}. For a reliable CyTOF analysis, at least 1.0

$\times 10^6$ cells per sample and two replicates are required. ! **CAUTION** The cell lines used in your research should be regularly checked to ensure that they are authentic and are not infected with mycoplasma. ! **CAUTION** All experiments involving animal or human samples should adhere to the relevant governmental and institutional ethics guidelines and regulations. Informed consent should be obtained from donors of human blood or tissue. All of our animal studies were performed in accordance with the investigators' protocols approved by the Stanford University institutional animal care and use committee.

- RPMI 1640 cell culture medium (Life Technologies, cat. no. 21870-092)
- FBS (Thermo Fisher Scientific, cat. no. SH3007003)
- Penicillin-streptomycin (10,000 U/mL; Thermo Fisher Scientific, cat. no. 15140122)
- L-glutamine (100x; Thermo Fisher Scientific, cat. no. 25030081)
- Recombinant human IL-10 (BD Biosciences, cat. no. 554611)
- Recombinant human IL-12 (Peprotech, cat. no. 200-12)
- Recombinant human IL-18 (R&D Systems, cat. no. B001-5)
- Brefeldin A solution (1,000x; eBioscience, cat. no. 00-4506-51)
- Monensin solution (1,000x; eBioscience, cat. no. 00-4505-51)
- Ficoll-Paque plus density gradient medium (Thermo Fisher Scientific, cat. no. 45-001-749)
- Iridium Ir¹⁹¹/Ir¹⁹³ DNA intercalator (Fluidigm, cat. no. 201192A)
- 16% (wt/vol) Paraformaldehyde (PFA, electron microscopy grade; Electron Microscopy Sciences, cat. no. 15710) ! **CAUTION** PFA is an irritant. Avoid contact with skin and eyes. Avoid inhalation.
- Saponin (Sigma-Aldrich, cat. no. S-7900)
- Methanol (Thermo Fisher Scientific, cat. no. A412-4) ! **CAUTION** Methanol is flammable. Keep away from heat. Avoid contact with skin and eyes. Avoid inhalation.
- Dimethyl sulfoxide (DMSO; Sigma-Aldrich, cat. no. D2650)
- BSA fraction V (Sigma-Aldrich, cat. no. A-2153)
- Sodium azide (NaN₃; Sigma-Aldrich, cat. no. S-8032) ! **CAUTION** Sodium azide is highly toxic. Avoid contact with skin, eyes, and clothing. This compound is fatal if swallowed.
- Sodium phosphate dibasic heptahydrate (Sigma-Aldrich, cat. no. S9390)
- Potassium phosphate monobasic anhydrous (Sigma-Aldrich, cat. no. P0662)
- Potassium chloride (Thermo Fisher Scientific, cat. no. P330)

- Sodium chloride (Thermo Fisher Scientific, cat. no. S271)

Equipment

- Tabletop microcentrifuge (Eppendorf, model no. 5424)
- Tabletop refrigerated swinging-bucket centrifuge (Beckman Coulter, model no. Allegra 6R)
- Aspirator (VP Scientific, cat. no. VP 177A-1)
- Screw-top Eppendorf tubes (Thermo Fisher Scientific, cat. no. 02-707-353)
- Polystyrene round-bottom test tubes with 35- μ m filter cap (FACS tubes; Thermo Fisher Scientific, cat. no. 08-771-23)
- Automated cell counter (Bio-Rad, model no. TC20)
- Digital-control water bath (Thermo Fisher Scientific, cat. no. 15-462-5Q)
- Mass cytometers (CyTOF version 1, CyTOF version 2, and CyTOF version 3 (Helios); Fluidigm)
- 3-kDa Amicon Ultra 0.5-mL centrifugal filter column (EMD Millipore, cat. no. UFC500396)
- 50-kDa Amicon Ultra 0.5-mL centrifugal filter column (EMD Millipore, cat. no. UFC505096)
- Syringe filter with 200-nm nylon membrane (Pall, cat. no. 4550)

Reagent setup

5.0% (vol/vol) HNO₃ solution—Mix 5 mL of high-purity concentrated HNO₃ with 95 mL of ddH₂O. Store for up to 2 years at RT. ! **CAUTION** HNO₃ is very corrosive. Avoid contact with skin, eyes, and clothing.

100 mM Ammonium acetate solution, pH 5.5—Dissolve 7.7 g of ammonium acetate in 995 mL of ddH₂O and add 1.03 mL of glacial acetic acid.

50 mM Lanthanide isotope solutions—Dissolve ~25 mg of lanthanide nitrate or chloride in an appropriate volume of L-buffer or in 100 mM ammonium acetate solution to obtain a 50 mM ^{139–176}Ln³⁺ solution. Mix gently by pipetting up and down using filter tips. Store at 4 °C for up to 2 years.

50 mM Yttrium solution—Dissolve ~10 mg of ⁸⁹Y(NO₃)₃•4H₂O in an appropriate volume of L-buffer or in 100 mM ammonium acetate solution to obtain a 50 mM ⁸⁹Y³⁺ solution. Mix gently by pipetting up and down using filter tips. Store at 4 °C for up to 2 years.

50 mM Indium isotope solutions—Dissolve ~10 mg of ¹¹³InCl₃ and ¹¹⁵InCl₃ individually in an appropriate volume of L-buffer or 100 mM ammonium acetate solution to

obtain 50 mM $^{113}\text{In}^{3+}$ and $^{115}\text{In}^{3+}$ solutions. Mix gently by pipetting up and down using filter tips. Store at 4 °C for up to 2 years.

50 mM Bismuth solution—Dissolve ~25 mg of $^{209}\text{Bi}(\text{NO}_3)_3 \cdot 5\text{H}_2\text{O}$ in an appropriate volume of 5.0% (vol/vol) HNO_3 to obtain a 50 mM $^{209}\text{Bi}^{3+}$ solution. Mix gently by pipetting up and down using filter tips. Store at 4 °C for up to 2 years. **▲ CRITICAL STEP** The concentration of HNO_3 should not be <5.0% (vol/vol); a lower concentration of HNO_3 may result in precipitation of bismuth in the following steps.

10x PBS—Dissolve 320 g of sodium chloride, 8 g of potassium chloride, 46 g of sodium phosphate dibasic heptahydrate, 8 g of potassium phosphate monobasic (anhydrous) in 3 L of ddH_2O , adjust to pH 7.4 with sodium hydroxide, and bring to a volume of 4 L. Store at RT for up to 6 months. **! CAUTION** Use high-purity reagents to avoid metal contamination from common lab chemicals.

PBS—Dilute 10x PBS at a 1:10 ratio with ddH_2O . Store at RT for up to 6 months.

Cell staining medium—Dissolve appropriate amounts of BSA and NaN_3 to achieve concentrations of 0.5% (wt/vol) and 0.02% (wt/vol), respectively, in PBS. Store at 4 °C for up to 6 months.

Cell culture medium—Add 50 mL of FBS, 5 mL of penicillin-streptomycin, and 5 mL of L-glutamine to 500 mL of RPMI 1640 medium. Store at 4 °C for up to 6 months.

Iridium $\text{Ir}^{191}/\text{Ir}^{193}$ DNA intercalator solution—Mix 1 mL of PBS with 100 μL of 16% (wt/vol) PFA solution. For methanol-permeabilized cells, add 0.25 μL of 500 μM iridium DNA intercalator (1:4,000); for non-permeabilized cells, add 0.40 μL of 500 μM iridium DNA intercalator (1:2,500). **! CAUTION** Iridium compounds are highly toxic. Avoid contact with skin, eyes, and clothing.

4 mM TCEP solution for antibody partial reduction—Mix 8 μL of 500 mM TCEP stock with 992 μL of R-buffer; vortex briefly.

Antibody stabilization solution—Add 0.1% (vol/vol) NaN_3 to antibody stabilizer. Store it at 4 °C for up to 1 year.

Procedure

▲ CRITICAL The Procedure has two main parts: the first contains three sections describing three individual protocols for antibody conjugation; the second has one section describing cell staining procedures to validate and titrate the conjugated antibodies. Section 1 starts at Step 1 and describes the conjugation of reduced antibodies with Pd@mal-DOTA mass tags that are prepared as described in Box 1. Section 2 starts at Step 30 and describes the chelation of Y^{3+} , In^{3+} , or Ln^{3+} cations into Maxpar X8 polymers, and the conjugation with reduced antibodies. Section 3 starts at Step 63 and describes the chelation of Bi^{3+} cations into Maxpar X8 polymers, and the conjugation with reduced antibodies. Section 4

describes brief procedures and instructions for staining cells with different types of conjugated antibodies (i.e., against stable surface and intracellular molecules and against stimulation-induced signaling molecules and cytokines).

Section 1: conjugation of antibody with palladium isotopic mass tags

Partial reduction of antibody ● Timing ~1 h

1. Add 100 μg of antibody stock to a 50-kDa 0.5-mL centrifugal filter column.
▲ CRITICAL STEP The filter columns are designed to hold up to 500 μL of solution. If 100 μg of antibody requires addition of >200 μL of solution, pre-concentrate the antibody first in the same filter column by spinning at 12,000*g* for 10 min at RT.
2. Add 300 μL of R-buffer to the column to bring it a final volume of 500 μL .
3. Spin the column at 12,000*g* for 10 min at RT. The final volume should not be >20 μL ; discard the column flow-through.
4. Add 100 μL of 4 mM TCEP solution to the antibody in the filter column, mix thoroughly by pipetting up and down using filter tips.
5. Incubate the mixture at 37 °C for 30 min in a water bath.
▲ CRITICAL STEP The antibody should not be incubated in 4 mM TCEP solution for >30 min; a longer incubation may result in the reduction of disulfide bonds that are necessary for the structural integrity of the antibody.
6. Add 300 μL of C-buffer to the partially reduced antibody in the filter column to stop the reaction.
7. Spin the column at 12,000*g* for 10 min at RT. The final volume should not be >20 μL ; discard the column flow-through.
8. Add 400 μL of C-buffer to the partially reduced antibody in the filter column.
9. Spin the column at 12,000*g* for 10 min at RT. The final volume should not be >20 μL ; discard the column flow-through.
▲ CRITICAL STEP The second wash step is necessary to remove excess TCEP solution.
10. Resuspend the partially reduced antibody in 100 μL of C-buffer. Mix by pipetting up and down using filter tips.

Conjugation of the reduced antibody with Pd@mal-DOTA mass tags ● Timing ~1 h

11. Retrieve one PCR tube of 10 mM Pd@mal-DOTA mass tags (prepared as described in Box 1) with the desired isotope (^{102}Pd , ^{104}Pd , ^{105}Pd , ^{106}Pd , ^{108}Pd , or ^{110}Pd).
12. Warm the tube to RT. Vortex briefly and spin at 1,000*g* for 10 s in a microcentrifuge to ensure that the reagent is at the bottom of the tube.

13. Add 1 μL of 10 mM Pd@mal-DOTA to the antibody solution (from Step 10).
14. Mix the solution thoroughly by pipetting up and down using filter tips. Incubate the mixture at 37 °C for 1 h in a water bath.
15. During the incubation, prepare three Zeba 7-kDa 0.5-mL spin desalting columns, remove the columns' closures and loosen the caps. Place each column in a 2.0-mL collection tube.
16. Spin at 1,500g for 1 min at RT to remove the storage solution.
17. Make a mark on the side of each column where the compacted resin is slanted upward. Place the columns in the microcentrifuge with the mark facing outward in all subsequent centrifugation steps.
18. Add 300 μL of W-buffer on top of the resin bed, spin at 1,500g for 1 min at RT, and discard the column flow-through.
19. Add 300 μL of W-buffer on top of the resin bed, spin at 1,500g for 1 min at RT, and discard the column flow-through.
20. Put these three columns into new 2.0-mL collection tubes marked W-1, W-2, and W-3, respectively.

Washing and recovering the Pd-tagged antibody ● Timing ~10 min

21. Transfer the solution of conjugated antibody (from Step 14) to the top of the compact resin bed of the tube marked W-1.
22. Spin at 1,500g for 2 min at RT to collect the flow-through. Discard the desalting column after use.
23. Transfer the flow-through of W-1 to the top of the compact resin bed of the tube marked W-2.
24. Spin at 1,500g for 2 min at RT to collect the flow-through. Discard the desalting column after use.
25. Transfer the flow-through of W-2 to the top of the compact resin bed of the tube marked W-3.
26. Spin at 1,500g for 2 min at RT to collect the flow-through. Discard the desalting column after use.
27. Transfer the flow-through of W-3 to a new screw-top tube. Label it with the name of the antibody and the palladium isotope.

■ **PAUSE POINT** The conjugated antibody can be stored at 4 °C for up to 1 month.

? TROUBLESHOOTING

Quantification of the Pd-tagged antibody ● Timing ~15 min

28. Determine the concentration of the Pd-tagged antibody using method A, which is described in Box 2.
29. Dilute the Pd-tagged antibody to an appropriate concentration (0.2 mg/mL is recommended) in antibody stabilization solution.

■ **PAUSE POINT** Store at 4 °C for up to 6 months.

Section 2: conjugation of antibody with yttrium, indium, or lanthanide isotopes**Chelation of trivalent isotopic cations (Y^{3+} , In^{3+} , or Ln^{3+}) into Maxpar X8 polymers ● Timing ~1 h**

30. Retrieve one tube (~200 μ g) of lyophilized Maxpar X8 polymers, this is sufficient to conjugate 100 μ g of IgG antibody. Spin the tube at 1,000g for 10 s at RT in a microcentrifuge to ensure that the reagent is at the bottom of the tube.
31. Dissolve the polymers in 95 μ L of L-buffer. Mix gently by pipetting up and down.
32. Add 5 μ L of 50 mM Y^{3+} , In^{3+} , or Ln^{3+} isotopic cations (in L-buffer or 100 mM ammonium acetate buffer, pH 5.5) to the polymer solution for a final concentration of 2.5 mM. Mix gently by pipetting up and down using filter tips.
33. Incubate the mixture at RT for 1 h. Mix approximately every 20 min by pipetting up and down using filter tips.
34. After 30 min, start Step 38 (partially reduce the IgG antibody) to ensure that the metal-isotope-chelated polymers and partially reduced antibody will be ready at the same time. If additional steps are required to pre-concentrate the antibody, this step should begin 10 min earlier.

▲ **CRITICAL STEP** The maleimide-functionalized groups of Maxpar X8 polymers hydrolyze in aqueous solutions; the reduction of the disulfide bonds of antibodies is reversible in aqueous solutions. To obtain efficient antibody conjugation, make sure that the chelated Maxpar X8 polymers and the reduced antibody are ready at same time.

Removal of free Y^{3+} , In^{3+} , or Ln^{3+} isotopic cations ● Timing ~30 min

35. After 1-h incubation, add 300 μ L of C-buffer to the isotope chelation mixture (from Step 33) for a final volume of 400 μ L. Transfer the solution to a 3-kDa MWCO filter column.
36. Spin the column at 14,000g for 30 min at RT. The final volume should not be >20 μ L; discard the column flow-through.
37. Re-suspend Y^{3+} , In^{3+} , or Ln^{3+} isotope-chelated polymers in 200 μ L of C-buffer. Gently pipette to mix and rinse the walls of the filter column to increase the recovery of the polymers.

Partial reduction of the IgG antibody ● Timing ~1 h

38. Add 100 μg of antibody stock to a 50-kDa 0.5-mL centrifugal filter column.
▲ CRITICAL STEP The filter columns are designed to hold up to 500 μL of solution. If 100 μg of antibody requires addition of >200 μL of solution, pre-concentrate the antibody first in the same filter column by spinning at 12,000*g* for 10 min at RT.
39. Add 300 μL of R-buffer to the column to bring a final volume of 500 μL .
40. Spin the column at 12,000*g* for 10 min at RT. The final volume should not be >20 μL ; discard the column flow-through.
41. Add 100 μL of 4 mM TCEP solution to the antibody in the filter column and mix thoroughly by pipetting up and down using filter tips.
42. Incubate the mixture at 37 °C for 30 min in a water bath.
▲ CRITICAL STEP The antibody should not be incubated in 4 mM TCEP solution for >30 min; a longer incubation may result in the reduction of disulfide bonds that are necessary for the structural integrity of the antibody.
43. Add 300 μL of C-buffer to the partially reduced antibody in the filter column to stop the reaction.
44. Spin the column at 12,000*g* for 10 min at RT. The final volume should not be >20 μL ; discard the column flow-through.
45. Add 400 μL of C-buffer to the partially reduced antibody in the filter column.
46. Spin the column at 12,000*g* for 10 min at RT. The final volume should not be >20 μL ; discard the column flow-through.
▲ CRITICAL STEP The second wash step is necessary to remove excess TCEP solution.

Conjugation of the reduced antibody with metal-isotope-chelated polymers ● Timing ~1 h

47. Transfer the isotope-chelated polymers suspended in C-buffer (from Step 37) to the partially reduced antibody in the 50-kDa MWCO filter column. Mix thoroughly by pipetting up and down using filter tips.
48. Incubate the mixture at 37 °C for 1 h in a water bath.

Washing and recovering the metal-isotope-tagged antibody ● Timing ~50 min

49. Add 200 μL of W-buffer to the filter column. Mix thoroughly by pipetting up and down using filter tips.
50. Spin the filter column at 12,000*g* for 10 min at RT. The final volume should not be >20 μL ; discard the column flow-through.

51. Add 400 μL of W-buffer to the filter column. Mix thoroughly by pipetting up and down using filter tips.
52. Spin the filter column at 12,000*g* for 10 min at RT. The final volume should not be >20 μL ; discard the column flow-through.
53. Repeat Steps 51 and 52 two more times.
54. Add 50 μL of W-buffer to the filter column. Pipette to mix and rinse the walls of the filter thoroughly.
55. Invert the filter column into a new collection tube.
56. Spin the inverted filter and collection tube assembly at 2,000*g* for 2 min at RT.
57. Gently remove the filter column from the collection tube. Add an additional 50 μL of W-buffer to the filter column. Pipette to mix and rinse the walls of the filter thoroughly.
58. Invert the filter column into the same collection tube.
59. Spin the assembly at 2,000*g* for 2 min at RT.
60. Transfer the MitAb solution to a new screw-top tube.
 - **PAUSE POINT** The conjugated antibody can be stored at 4 °C for up to 1 month.

Quantification of the metal-isotope-tagged antibody ● Timing ~15 min

61. Determine the concentration of Y-, In-, or Ln-tagged antibody using method A, which is described in Box 2.
 - ? TROUBLESHOOTING
62. Dilute the conjugated antibody to an appropriate concentration (0.2 mg/mL is recommended) in antibody stabilization solution.
 - ▲ **CRITICAL STEP** Ideally, the antibody should be diluted such that 1–2 μL is sufficient for a 100- μL cell-staining reaction. This facilitates the creation of low-volume staining cocktails.
 - **PAUSE POINT** Store at 4 °C for up to 6 months.

Section 3: conjugation of antibody with bismuth

Chelation of $^{209}\text{Bi}^{3+}$ cations into Maxpar X8 polymers ● Timing ~1 h

63. Retrieve one tube (~200 μg) of lyophilized Maxpar X8 polymers; this is sufficient to conjugate 100 μg of IgG antibody. Spin at 1,000*g* for 10 s at RT in a microcentrifuge to ensure that the reagent is at the bottom of the tube.
64. Dissolve the polymers in 95 μL of 5.0% (vol/vol) HNO_3 . Mix gently by pipetting up and down.

▲ CRITICAL STEP Do not dissolve the polymers in other solutions such as ddH₂O or L-buffer because these solvents will result in the precipitation of ²⁰⁹Bi³⁺ cations.

65. Add 5 μL of 50 mM ²⁰⁹Bi³⁺ solution (in 5.0% (vol/vol) HNO₃) to the polymer solution. The final concentration of ²⁰⁹Bi³⁺ cations will be 2.5 mM. Gently mix by pipetting up and down using filter tips.
66. Incubate the mixture at RT for 1 h. Mix approximately every 20 min by pipetting up and down using filter tips.

Removal of free ²⁰⁹Bi³⁺ cations ● Timing ~1 h

67. Add 300 μL of ddH₂O to the bismuth chelation mixture for a final volume of 400 μL. Transfer the solution to a 3-kDa MWCO filter column.

▲ CRITICAL STEP Do not add other solutions, such as PBS, R-buffer, or C-buffer, because these solvents may result in the precipitation of free ²⁰⁹Bi³⁺ cations.

68. Spin the filter column at 14,000*g* for 30 min at RT. The final volume should not be >20 μL; discard the column flow-through.
69. When centrifugation starts, begin Step 73 (partial reduction of IgG antibody) to ensure that ²⁰⁹Bi-chelated polymers and reduced antibody will be ready at the same time. If additional steps are required to pre-concentrate the antibody, this step should begin 10 min earlier.

▲ CRITICAL STEP The maleimide-functionalized groups of Maxpar X8 polymers hydrolyze in aqueous solutions; the reduction of the disulfide bonds of the antibodies is reversible in aqueous solutions. To obtain efficient antibody conjugation, make sure the chelated Maxpar X8 polymers and the reduced antibody are ready at same time.

70. Add 400 μL of C-buffer to the filter column (from Step 68).

? TROUBLESHOOTING

71. Spin the filter column at 14,000*g* for 30 min at RT. The final volume should not be >20 μL; discard the column flow-through.

▲ CRITICAL STEP The second wash in C-buffer is important for removing the excess ²⁰⁹Bi³⁺ cations and adjusting the pH value for antibody conjugation.

72. Resuspend the ²⁰⁹Bi-chelated polymers in 200 μL of C-buffer. Gently pipette to mix and rinse the walls of the filter column to increase the recovery of the polymers.

Partial reduction of the IgG antibody ● Timing ~1 h

73. Add 100 μg of antibody stock to a 50-kDa 0.5-mL centrifugal filter column.

▲ **CRITICAL STEP** The filter columns are designed to hold up to 500 μL of solution. If 100 μg of antibody requires addition of >200 μL of solution, pre-concentrate the antibody first in the same filter column by spinning at 12,000*g* for 10 min at RT.

74. Add 300 μL of R-buffer to the column to bring it a final volume of 500 μL .
75. Spin at 12,000*g* for 10 min at RT. The final volume should not be >20 μL ; discard the column flow-through.
76. Add 100 μL of 4 mM TCEP solution to the antibody in the filter column and mix thoroughly by pipetting up and down using filter tips.
77. Incubate the mixture at 37 °C for 30 min in a water bath.

▲ **CRITICAL STEP** The antibody should not be incubated in 4 mM TCEP solution for >30 min; a longer incubation may result in the reduction of the disulfide bonds that are necessary for the structural integrity of the antibody.

78. Add 300 μL of C-buffer to the partially reduced antibody in the filter column to stop the reaction.
79. Spin at 12,000*g* for 10 min at RT. The final volume should not be >20 μL ; discard the column flow-through.
80. Add 400 μL of C-buffer to the partially reduced antibody in the filter column.
81. Spin at 12,000*g* for 10 min at RT. The final volume should not be >20 μL ; discard the column flow-through.

▲ **CRITICAL STEP** The second wash step is necessary to remove excess TCEP solution.

Conjugation of the reduced antibody with ^{209}Bi -chelated polymers ● Timing ~1 h

82. Transfer the ^{209}Bi -chelated polymers suspended in C-buffer (from Step 72) to the partially reduced antibody in the 50-kDa MWCO filter column. Mix thoroughly by pipetting up and down using filter tips.
83. Incubate the mixture at 37 °C for 1 h in a water bath.

Washing and recovering the ^{209}Bi -tagged antibody ● Timing ~50 min

84. Add 200 μL of W-buffer to the filter column. Mix thoroughly by pipetting up and down using filter tips.
85. Spin the filter column at 12,000*g* for 10 min at RT. The final volume should not be >20 μL ; discard the column flow-through.
86. Add 400 μL of W-buffer to the filter column. Mix thoroughly by pipetting up and down using filter tips.
87. Spin the filter column at 12,000*g* for 10 min at RT. The final volume should not be >20 μL ; discard the column flow-through.

88. Repeat Steps 86 and 87 two more times.
89. Add 50 μL of W-buffer to the filter column. Pipette to mix and rinse the walls of the filter thoroughly.
90. Invert the filter column into a new collection tube.
91. Spin the inverted filter and collection tube assembly at 2,000*g* for 2 min at RT.
92. Gently remove the filter column from collection tube. Add an additional 50 μL of W-buffer to the filter column. Pipette to mix and rinse the walls of the filter thoroughly.
93. Invert the filter column into the same collection tube.
94. Spin the assembly at 2,000*g* for 2 min at RT.
95. Transfer the solution of ^{209}Bi -tagged antibody to a new screw-top tube.
 - **PAUSE POINT** The conjugated antibody can be stored at 4 °C for up to 1 month.

Quantification of the ^{209}Bi -tagged antibody ● Timing ~45 min

96. Determine the concentration of ^{209}Bi -tagged antibody using the method B, described in Box 2.
97. Dilute the ^{209}Bi -tagged antibody to an appropriate concentration (0.2 mg/mL is recommended) in antibody stabilization solution.
 - **PAUSE POINT** Store at 4 °C for up to 6 months.

Part 4

Cell staining for validation and titration of metal-isotope-tagged antibodies ● Timing ~45 min

98. Identify the positive- and negative-control cell populations for the conjugated antibody. The differential selection of populations and stimulation procedures are described below: option A is for antibodies against stable surface or intracellular molecules (e.g., CD45, CD3, MHC II, and p-histone H3); option B is for antibodies against stimulation-inducible intracellular molecules or modifications (e.g., pSTAT3); and option C is for antibodies against secreted molecules (e.g., IFN- γ).

A. Antibodies against a stable surface or intracellular molecule

- i. Add 1 mL of cell culture medium or cell staining medium at 37 °C to FACS tubes.
- ii. For live-cell barcoding with Pd-tagged CD45 antibodies (Pd-CD45), 1.0×10^6 Jurkat cells are added to each FACS tube and pelleted by centrifuging at 500*g* for 5 min at RT. In the strategy of 6-choose-1, six FACS tubes should be prepared, each containing one antibody of 100 μL of 2 $\mu\text{g}/\text{ml}$ Pd-CD45;

in the strategy of 6-choose-2, three FACS tubes should be prepared, each containing two antibodies of 50 μ L of 2 μ g/ml Pd-CD45; in the strategy of 6-choose-3, one FACS tube should be prepared containing three antibodies of 50 μ L of 1.5 μ g/ml Pd-CD45.

- iii. Incubate the cells for 30 min at RT with gentle agitation.
- iv. Wash the cells twice using 4 mL of cell staining medium by centrifuging at 500*g* for 5 min at RT.

B. Antibody against an induced intracellular molecule (e.g., pSTAT3)

- i. Add 1 mL of the cell culture medium at 37 °C to FACS tubes labeled 'stimulated' and 'unstimulated'. To obtain reliable results, at least two replicates are required.
- ii. Add 10×10^6 human PBMCs to each tube.
- iii. Add stimulation molecules such as IL-10 to the tubes labeled 'stimulated' to a final concentration of 100 ng/mL; add an equal volume of cell culture medium to the tubes labeled 'unstimulated'.
- iv. Incubate the cells at 37 °C for 15 min.

▲ **CRITICAL STEP** Cellular-signaling events are very time sensitive. Be ready to proceed to Step 99 immediately.

▲ **CRITICAL STEP** The stimulation should result in selective induction of the activated form of the signaling molecule of interest. Additional information on antibody targets and appropriate stimulation is provided in previous work⁷⁶.

C. Antibody against a secreted intracellular cytokine (e.g., IFN- γ)

- i. Add 1 mL of cell culture medium at 37 °C to FACS tubes labeled 'stimulated' and 'unstimulated'. To obtain reliable results, at least two replicates are required.
- ii. Add 10×10^6 human PBMCs to each tube.
- iii. Add a stimulation cocktail, such as a combination of IL-12 and IL-18, to final concentrations of 50 ng/mL to the tubes labeled 'stimulated'; add an equal volume of cell culture medium to the tubes labeled 'unstimulated'.
- iv. Add the secretion inhibitors Brefeldin A and Monensin to each tube; 1,000x stocks should be added at a dilution of 1:1,000.
- v. Incubate the cells at 37 °C for 15 min.

▲ **CRITICAL STEP** The stimulation should result in selective induction of the activated form of the molecule of interest. Additional information on secreted cytokines and appropriate stimulation can be found in previous work²¹.

Fixing and permeabilization of the cells ● Timing ~30 min

99. Add 100 μL of 16% (wt/vol) PFA to each FACS tube and pipette up and down thoroughly. Incubate for 10 min at RT.
100. Wash the cells twice using 4 mL of cell staining medium by centrifuging at 500g for 5 min at RT.
101. Add 1 mL of $-20\text{ }^{\circ}\text{C}$ methanol to each of the disrupted cell pellets. Vortex to mix and incubate on ice for 10 min.

■ **PAUSE POINT** Store at $-80\text{ }^{\circ}\text{C}$ for up to 1 month.

Immune staining with the titrated antibodies ● Timing ~1 h

102. For antibody titrations, wash the cells twice using 4 mL of cell staining medium by centrifuging at 500g for 5 min at RT.
103. Aspirate the supernatant and leave the cells in 300 μL of residual volume, then divide the cells into six new FACS tubes.
104. Prepare a six-step and twofold serial dilution of the conjugated antibodies. Add 50 μL of the diluted antibodies to each 50 μL of cell sample. The final titration concentrations of the conjugated antibodies range from 250 to 8,000 ng/mL.
105. Incubate the cells for 30 min at RT with gentle agitation.
106. Wash the cells twice using 4 mL of cell staining medium by centrifuging at 500g for 5 min at RT.

Staining of the cells in DNA intercalator solution ● Timing ~30 min

107. Add 1 mL of Ir DNA intercalator solution to each FACS tube and mix thoroughly. Incubate for at least 20 min at RT.
■ **PAUSE POINT** Cells can be stored in DNA intercalator solution for up to 3 d at $4\text{ }^{\circ}\text{C}$ before acquisition on a mass cytometer.
108. Wash the cells twice using 4 mL of cell staining medium by centrifuging at 500g for 5 min at RT.
109. Wash the cells using 4 mL of ddH₂O by centrifuging at 500g for 5 min at RT and then resuspend the cells in ddH₂O at a concentration of $1\text{--}2 \times 10^6$ cells per mL.
110. Filter the cells through a 35- μm filter cap and measure each tube using the mass cytometer (illustrated in Fig. 4c). Collect cell events at a rate of 500–1,000 cells per s.

Troubleshooting

Troubleshooting advice can be found in Table 2.

Timing

Section 1, conjugation of antibody with palladium isotopic mass tags

Steps 1–10, partial reduction of the IgG antibody (Fig. 5a): ~1 h

Steps 11–20, conjugation of the reduced antibody with Pd@mal-DOTA mass tags: ~1 h

Steps 21–27, washing and recovering the Pd-tagged antibody: ~10 min

Steps 28 and 29, quantification of the Pd-tagged antibody: ~15 min

Section 2, conjugation of antibody with yttrium, indium, or lanthanide isotopes

Steps 30–34, chelation of Y^{3+} , In^{3+} , or Ln^{3+} isotopic cations to Maxpar X8 polymers (Fig. 5b): ~1 h

Steps 35–37, removal of the free Y^{3+} , In^{3+} , or Ln^{3+} isotopic cations: ~30 min

Steps 38–46, partial reduction of the IgG antibody: ~1 h

Steps 47 and 48, conjugation of the reduced antibody with metal-isotope-chelated polymer: ~1 h

Steps 49–60, washing and recovery of the MitAb: ~50 min

Steps 61 and 62, quantification of the MitAb: ~15 min

Section 3, conjugation of antibody with bismuth

Steps 63–66, chelation of $^{209}Bi^{3+}$ cations to Maxpar X8 polymers (Fig. 5c): ~1 h

Steps 67–72, removal of the free $^{209}Bi^{3+}$ cations: ~1 h

Steps 73–81, partial reduction of the IgG antibody: ~1 h

Steps 82 and 83, conjugation of the reduced antibody with ^{209}Bi -chelated polymers: ~1 h

Steps 84–95, washing and recovery of the ^{209}Bi -tagged antibody: ~50 min

Steps 96 and 97, quantification of the ^{209}Bi -tagged antibody: ~45 min

Section 4, cell staining for validation and titration of metal-isotope-tagged antibodies

Step 98, preparation of the cell samples: ~45 min

Steps 99–101, fixing and permeabilization of the cells: ~30 min

Steps 102–106, immune staining with the titrated antibodies: ~1 h

Steps 107–110, staining of the cells in DNA intercalator solution: ~30 min

Box 1, preparation of palladium isotopic mass tags: 8 h

Box 2, quantification of metal-isotope-tagged antibodies: 1 h

Anticipated results

Characterization of palladium isotopic mass tags

Six Pd@mal-DOTA mass tags were synthesized and measured using ESI-MS, according to the procedures described in Box 1. The chemical formula of mal-DOTA is $C_{22}H_{34}N_6O_9$, and its theoretical MW is 526.23; therefore, the main mass peak at an m/z value of 525.2 in negative-ion ESI-MS was identified as representing the single-charge negative molecular ions $[M-1]^-$ of mal-DOTA (Fig. 6a). In the Pd@mal-DOTA complexes, two hydrogen ions of mal-DOTA are replaced by the coordinated Pd^{2+} cation; thus, the expected mass for Pd@mal-DOTA is the sum of the atomic weight of the palladium isotope and the MW of mal-DOTA minus 3 Da (i.e., $M-3 + Pd$). For example, as shown in Fig. 6b, the main mass peak of $^{102}Pd@mal-DOTA$ is at the m/z value of 625.2, as expected for $[M-3 + 102]^-$ (i.e., $526.2 - 3 + 102 = 625.2$). The mass spectra of $^{104}Pd@mal-DOTA$, $^{105}Pd@mal-DOTA$, $^{106}Pd@mal-DOTA$, $^{108}Pd@mal-DOTA$, and $^{110}Pd@mal-DOTA$ are shown in Fig. 6c–g, respectively.

Cell barcoding assays using Pd-tagged CD45 antibodies

Multiplexed barcoding of live Jurkat cells was carried out using CD45 antibodies conjugated with palladium isotopes as described in Section 1 of the Procedure. Three different barcoding strategies are demonstrated. For the 6-choose-1 strategy, Fig. 7a shows the CyTOF measurements as ‘rain dots’ of each barcode of Pd-tagged CD45 and biaxial contour plots comparing pairs of barcoding channels. These data indicate that each barcoded cell sample was effectively distinguished and that the double-channel-positive populations were rare. For the 6-choose-2 strategy, ^{106}Pd - and ^{108}Pd -tagged CD45, ^{108}Pd - and ^{110}Pd -tagged CD45, or ^{106}Pd - and ^{110}Pd -tagged CD45 were used to stain Jurkat cells. Both ‘rain dots’ and biaxial contours demonstrate that there are three expected double-positive populations, as shown in Fig. 7b. For the 6-choose-3 strategy, ^{102}Pd -, ^{104}Pd -, and ^{105}Pd -tagged CD45 antibodies were used to stain Jurkat cells. The expected triple-positive populations were observed, as shown in Fig. 7c. In principle, by using the 6-choose-1 strategy, six samples can be measured simultaneously. The strategies of 6-choose-2 and 6-choose-3 enable multiplexing of 15 and 20, respectively. It should be taken into consideration that, because of saturation of cell immune staining, the higher multiplexing will result in the lower signal intensity in each barcoding channel and consequentially might decrease the recovery of cell debarcoding.

Titration of various ^{209}Bi -tagged antibodies

Antibody titration is an important experiment used to validate and examine the specificity and affinity of the conjugated antibody. It is used to determine the optimal concentration of antibody for cell staining. As an example of how to do this, a wide variety of antibodies

against stable surface and intracellular molecules and against stimulation-induced signaling molecules and cytokines have been successfully conjugated to bismuth mass tags, as described in Section 3 of the Procedure. Titration experiments were performed in positive- and negative-control cells to determine the maximum ratio of positive signal to background, which is referred to as the optimal concentration. As shown in Fig. 8a, ^{209}Bi -tagged MHC class II antibody was incubated with mouse PBMCs at concentrations ranging from 250 to 8,000 ng/mL in two fold dilutions. The titration curves were generated by analysis of B cells, which express MHC class II antigens, and T cells, which do not. Figure 8b,c show the titration histograms of intracellular phosphorylation antibodies of ^{209}Bi -tagged phospho-STAT3(Tyr705) and ^{209}Bi -tagged phospho-histone H3(Ser28) at their optimal concentrations. Figure 8d shows the titration histogram of the intracellular cytokine antibody of ^{209}Bi -tagged IFN- γ at the optimal concentration in stimulated and unstimulated natural killer cells. Figure 8e shows the titration histogram of secondary antibody of ^{209}Bi -tagged anti-PE at the optimal concentration in PE-conjugated CD3 antibody-stained T cells and B cells of human PBMCs. These results indicate that the bismuth conjugation protocol is suitable for various types of antibodies used in mass cytometry.

Comparisons of bismuth- and lanthanide-tagged antibodies in high-dimensional assays

By following the protocol described in Section 2 of the Procedure, a number of antibodies have been conjugated with yttrium, indium, and lanthanide isotopic mass tags (Supplementary Table 1). In high-dimensional CyTOF assays, bismuth- and lanthanide-tagged antibodies should provide comparable results without the isotope crosstalk. To demonstrate this, the same antibodies were conjugated with both bismuth and lanthanide mass tags: (i) human anti-CD3 tagged with ^{209}Bi and ^{170}Er , (ii) human anti-CD56 tagged with ^{209}Bi and ^{176}Yb , and (iii) mouse anti-MHC class II tagged with ^{209}Bi and ^{176}Yb . Three separate comparisons were carried out in Jurkat cells, human PBMCs, and immune cells of mouse organs.

First, Jurkat cells were stained with lanthanide-tagged antibodies against CD19, CD4, CD11a, CD5, CD7, CD184, and CD2, and either ^{209}Bi -tagged CD3 or ^{170}Er -tagged CD3. As the results in biaxial scatter plots (Fig. 9a, left) and radar charts (Fig. 9a, right) show, bismuth- and lanthanide-tagged CD3 provided comparable values of CD3 expression in Jurkat cells, and mean intensities of other compared CD markers had a strong correlation (Pearson correlation, $r = 0.997$, $P < 0.00001$, Supplementary Fig. 1a). Second, human PBMCs were then stained with 37 antibodies against surface markers and three intercellular markers (Supplementary Table 1), and either ^{209}Bi -tagged CD56 or ^{176}Yb -tagged CD56. Fifteen immune cell subpopulations were manually gated (Supplementary Fig. 2). As the results in viSNE (visualization of t -distributed stochastic neighbor embedding) plots (Fig. 9b) and heat maps (Fig. 9c) show, there are highly comparable immunophenotypic clustering and strong correlations between data collected using ^{209}Bi -tagged CD56 and ^{176}Yb -tagged CD56 (Pearson correlation, $r = 0.991$, $P < 0.00001$, Supplementary Fig. 1b). Third, comparison of ^{209}Bi - and ^{176}Yb -tagged MHC class II antibodies in scaffold maps revealing the immune organization of bone marrow for C57BL/6 mice are shown in Fig. 10.

Supplementary Material

Refer to Web version on PubMed Central for supplementary material.

Acknowledgements

We thank G. Jager for administrative support and A. Jager for mass cytometry quality control and instrument maintenance. We thank J. Ramunas, S.-Y. Chen, V.D. Gonzalez, and E.R. Zunder for valuable discussions. This work was supported by grants from the US National Institutes of Health (U19 AI057229, 1U19AI100627, R01CA184968, R33 CA183654, and R33 CA183692), US National Heart, Lung, and Blood Institute (N01-HV-00242), US Department of Defense (OC110674 and 11491122), Bill & Melinda Gates Foundation (OPPI113682), and Food and Drug Administration (HHSF223201210194C).

References

1. Robinson JP & Roederer M Flow cytometry strikes gold. *Science* 350, 739–740 (2015). [PubMed: 26564833]
2. Kling J Measure for measure. *Nature* 518, 439–443 (2015). [PubMed: 25693572]
3. Bandura DR et al. Mass cytometry: technique for real time single cell multitarget immunoassay based on inductively coupled plasma time-of-flight mass spectrometry. *Anal. Chem* 81, 6813–6822 (2009). [PubMed: 19601617]
4. Bendall SC et al. Single-cell mass cytometry of differential immune and drug responses across a human hematopoietic continuum. *Science* 332, 687–696 (2011). [PubMed: 21551058]
5. Janes MR & Rommel C Next-generation flow cytometry. *Nat. Biotechnol* 29, 602–604 (2011). [PubMed: 21747386]
6. Chen JH, Pelka K & Hacohen N Heavy metal enlightens tumor immunity. *Cell* 169, 567–569 (2017). [PubMed: 28475889]
7. Amir ED et al. viSNE enables visualization of high dimensional single-cell data and reveals phenotypic heterogeneity of leukemia. *Nat. Biotechnol* 31, 545–552 (2013). [PubMed: 23685480]
8. Bjornson ZB, Nolan GP & Fantl WJ Single-cell mass cytometry for analysis of immune system functional states. *Curr. Opin. Immunol* 25, 484–494 (2013). [PubMed: 23999316]
9. Spitzer MH et al. An interactive reference framework for modeling a dynamic immune system. *Science* 349, 12 (2015). [PubMed: 26138955]
10. Anchang B et al. Visualization and cellular hierarchy inference of single-cell data using SPADE. *Nat. Protoc* 11, 1264–1279 (2016). [PubMed: 27310265]
11. Newell EW & Cheng Y Mass cytometry: blessed with the curse of dimensionality. *Nat. Immunol* 17, 890–895 (2016). [PubMed: 27434000]
12. Spitzer MH & Nolan GP Mass cytometry: single cells, many features. *Cell* 165, 780–791 (2016). [PubMed: 27153492]
13. Bendall SC, Nolan GP, Roederer M & Chattopadhyay PK A deep profiler's guide to cytometry. *Trends Immunol.* 33, 323–332 (2012). [PubMed: 22476049]
14. Tanner SD, Baranov VI, Ornatsky OI, Bandura DR & George TC An introduction to mass cytometry: fundamentals and applications. *Cancer Immunol. Immunother* 62, 955–965 (2013). [PubMed: 23564178]
15. Tricot S et al. Evaluating the efficiency of isotope transmission for improved panel design and a comparison of the detection sensitivities of mass cytometer instruments. *Cytometry A* 87A, 357–368 (2015).
16. Baranov VI, Quinn Z, Bandura DR & Tanner SD A sensitive and quantitative element-tagged immunoassay with ICPMS detection. *Anal. Chem* 74, 1629–1636 (2002). [PubMed: 12033255]
17. Zhang C, Zhang ZY, Yu BB, Shi JJ & Zhang XR Application of the biological conjugate between antibody and colloid Au nanoparticles as analyte to inductively coupled plasma mass spectrometry. *Anal. Chem* 74, 96–99 (2002). [PubMed: 11795824]

18. Ornatsky OI et al. Development of analytical methods for multiplex bio-assay with inductively coupled plasma mass spectrometry. *J. Anal. At. Spectrom* 23, 463–469 (2008). [PubMed: 19122859]
19. Han G, Xing Z, Dong Y, Zhang S & Zhang X One-step homogeneous DNA assay with single-nanoparticle detection. *Angew. Chem. Int. Ed. Engl* 50, 3462–3465 (2011). [PubMed: 21391295]
20. Han G, Zhang S, Xing Z & Zhang X Absolute and relative quantification of multiplex DNA assays based on an elemental labeling strategy. *Angew. Chem. Int. Ed. Engl* 52, 1466–1471 (2013). [PubMed: 23239546]
21. Newell EW, Sigal N, Bendall SC, Nolan GP & Davis MM Cytometry by time-of-flight shows combinatorial cytokine expression and virus-specific cell niches within a continuum of CD8(+) T cell phenotypes. *Immunity* 36, 142–152 (2012). [PubMed: 22265676]
22. Newell EW et al. Combinatorial tetramer staining and mass cytometry analysis facilitate T-cell epitope mapping and characterization. *Nat. Biotechnol* 31, 623–629 (2013). [PubMed: 23748502]
23. Takahashi C et al. Mass cytometry panel optimization through the designed distribution of signal interference. *Cytometry A* 91A, 39–47 (2017).
24. Lavin Y et al. Innate immune landscape in early lung adenocarcinoma by paired single-cell analyses. *Cell* 169, 750–765 (2017). [PubMed: 28475900]
25. Mei HE, Leipold MD, Schulz AR, Chester C & Maecker HT Barcoding of live human peripheral blood mononuclear cells for multiplexed mass cytometry. *J. Immunol* 194, 2022–2031 (2015). [PubMed: 25609839]
26. Bodenmiller B et al. Multiplexed mass cytometry profiling of cellular states perturbed by small-molecule regulators. *Nat. Biotechnol* 30, 858–867 (2012). [PubMed: 22902532]
27. Behbehani GK, Bendall SC, Clutter MR, Fantl WJ & Nolan GP Single-cell mass cytometry adapted to measurements of the cell cycle. *Cytometry A* 81A, 552–566 (2012).
28. Edgar LJ et al. Isotopologous organotellurium probes reveal dynamic hypoxia in vivo with cellular resolution. *Angew. Chem. Int. Ed. Engl* 55, 13159–13163 (2016). [PubMed: 27709819]
29. Edgar LJ et al. Identification of hypoxic cells using an organotellurium tag compatible with mass cytometry. *Angew. Chem. Int. Ed. Engl* 53, 11473–11477 (2014). [PubMed: 25195589]
30. Park H, Edgar LJ, Lumba MA, Willis LM & Nitz M Organotellurium scaffolds for mass cytometry reagent development. *Org. Biomol. Chem* 13, 7027–7033 (2015). [PubMed: 26040785]
31. Schulz AR, Stanislawiak S, Baumgart S, Gruetzkau A & Mei HE Silver nanoparticles for the detection of cell surface antigens in mass cytometry. *Cytometry A* 91A, 25–33 (2017).
32. Zunder ER et al. Palladium-based mass tag cell barcoding with a doublet-filtering scheme and single-cell deconvolution algorithm. *Nat. Protoc* 10, 316–333 (2015). [PubMed: 25612231]
33. Behbehani GK et al. Transient partial permeabilization with saponin enables cellular barcoding prior to surface marker staining. *Cytometry A* 85A, 1011–1019 (2014).
34. Ornatsky OI et al. Study of cell antigens and intracellular DNA by identification of element-containing labels and metallointercalators using inductively coupled plasma mass spectrometry. *Anal. Chem* 80, 2539–2547 (2008). [PubMed: 18318509]
35. Fienberg HG, Simonds EF, Fantl WJ, Nolan GP & Bodenmiller B A platinum-based covalent viability reagent for single-cell mass cytometry. *Cytometry A* 81A, 467–475 (2012).
36. McCarthy RL, Mak DH, Burks JK & Barton MC Rapid monoisotopic cisplatin based barcoding for multiplexed mass cytometry. *Sci. Rep* 7, 6 (2017). [PubMed: 28127056]
37. Stern AD, Rahman AH & Birtwistle MR Cell size assays for mass cytometry. *Cytometry A* 91A, 14–24 (2017).
38. Catena R, Ozcan A, Zivanovic N & Bodenmiller B Enhanced multiplexing in mass cytometry using osmium and ruthenium tetroxide species. *Cytometry A* 89A, 491–497 (2016).
39. Spitzer MH et al. Systemic immunity is required for effective cancer immunotherapy. *Cell* 168, 1–16 (2017). [PubMed: 28086081]
40. Han G et al. Atomic mass tag of bismuth-209 for increasing the immunoassay multiplexing capacity of mass cytometry. *Cytometry A* 91A, 1150–1163 (2017).

41. Majonis D, Ornatsky O, Kinach R & Winnik MA Curious results with palladium- and platinum-carrying polymers in mass cytometry bioassays and an unexpected application as a dead cell stain. *Biomacromolecules* 12, 3997–4010 (2011). [PubMed: 21955116]
42. Chevrier S et al. Compensation of signal spillover in suspension and imaging mass cytometry. *Cell Syst.* 6, 612–620 (2018). [PubMed: 29605184]
43. Dulski P Interferences of oxide, hydroxide and chloride analyte species in the determination of rare-earth elements in geological samples by inductively-coupled plasma-mass spectrometry. *Fresenius J. Anal. Chem* 350, 194–203 (1994).
44. Liu P et al. Metal-chelating polymers (MCPs) with zwitterionic pendant groups complexed to trastuzumab exhibit decreased liver accumulation compared to polyanionic MCP immunoconjugates. *Biomacromolecules* 16, 3613–3623 (2015). [PubMed: 26469142]
45. Majonis D et al. Synthesis of a functional metal-chelating polymer and steps toward quantitative mass cytometry bioassays. *Anal. Chem* 82, 8961–8969 (2010). [PubMed: 20939532]
46. Lou X et al. Polymer-based elemental tags for sensitive Bioassays. *Angew. Chem. Int. Ed. Engl* 46, 6111–6114 (2007). [PubMed: 17533637]
47. Schwarz G, Mueller L, Beck S & Linscheid MW DOTA based metal labels for protein quantification: a review. *J. Anal. At. Spectrom* 29, 221–233 (2014).
48. De Stefano C, Gianguzza A, Pettignano A & Sammartano S Palladium(II) complexes of aminopolycarboxylic ligands in aqueous solution. *J. Chem. Eng. Data* 56, 4759–4771 (2011).
49. Pichaandi J et al. Liposome-encapsulated NaLnF(4) nanoparticles for mass cytometry: evaluating nonspecific binding to cells. *Chem. Mater* 29, 4980–4990 (2017).
50. Tong L, Lu E, Pichaandi J, Zhao GY & Winnik MA Synthesis of uniform NaLnF(4) (Ln: Sm to Ho) nanoparticles for mass cytometry. *J. Phys. Chem. C* 120, 6269–6280 (2016).
51. Zhao GY, Tong L, Cao PP, Nitz M & Winnik MA Functional PEG-PAMAM-tetraphosphonate capped NaLnF(4) nanoparticles and their colloidal stability in phosphate buffer. *Langmuir* 30, 6980–6989 (2014). [PubMed: 24898128]
52. Lu E, Pichaandi J, Arnett LP, Tong L & Winnik MA Influence of Lu³⁺ doping on the crystal structure of uniform small (5 and 13 nm) NaLnF(4) upconverting nanocrystals. *J. Phys. Chem. C* 121, 18178–18185 (2017).
53. Wu X et al. Lanthanide-coordinated semiconducting polymer dots that function for both flow cytometry and mass cytometry. *Angew. Chem. Int. Ed. Engl* 56, 14908–14912 (2017). [PubMed: 28941061]
54. O’Gorman WE et al. Mass cytometry identifies a distinct monocyte cytokine signature shared by clinically heterogeneous pediatric SLE patients. *J. Autoimmun* 81, 74–89 (2017).
55. Lun ATL, Richard AC & Marioni JC Testing for differential abundance in mass cytometry data. *Nat. Methods* 14, 707–709 (2017). [PubMed: 28504682]
56. Diggins KE, Greenplate AR, Leelatian N, Wogslund CE & Irish JM Characterizing cell subsets using marker enrichment modeling. *Nat. Methods* 14, 275–278 (2017). [PubMed: 28135256]
57. Geng J et al. The transcriptional coactivator TAZ regulates reciprocal differentiation of T(H)17 cells and T-reg cells. *Nat. Immunol* 18, 800–812 (2017). [PubMed: 28504697]
58. Chevrier S et al. An immune atlas of clear cell renal cell carcinoma. *Cell* 169, 736–749 (2017). [PubMed: 28475899]
59. See P et al. Mapping the human DC lineage through the integration of high-dimensional techniques. *Science* 356, aag3009 (2017).
60. Leelatian N et al. Single cell analysis of human tissues and solid tumors with mass cytometry. *Cytometry B Clin. Cytom* 92, 68–78 (2017). [PubMed: 27598832]
61. Baumgart S, Peddinghaus A, Schulte-Wrede U, Mei HE & Gruetzkau A OMIP-034: comprehensive immune phenotyping of human peripheral leukocytes by mass cytometry for monitoring immunomodulatory therapies. *Cytometry A* 91A, 34–38 (2017).
62. Baca Q, Cosma A, Nolan G & Gaudilliere B The road ahead: implementing mass cytometry in clinical studies, one cell at a time. *Cytometry B Clin. Cytom* 92, 10–11 (2017). [PubMed: 27874247]

63. van Unen V et al. Mass cytometry of the human mucosal immune system identifies tissue- and disease-associated immune subsets. *Immunity* 44, 1227–1239 (2016). [PubMed: 27178470]
64. Zunder ER, Lujan E, Goltsev Y, Wernig M & Nolan GP A continuous molecular roadmap to iPSC reprogramming through progression analysis of single-cell mass cytometry. *Cell Stem Cell* 16, 323–337 (2015). [PubMed: 25748935]
65. Lujan E et al. Early reprogramming regulators identified by prospective isolation and mass cytometry. *Nature* 521, 352–356 (2015). [PubMed: 25830878]
66. Lakshmikanth T et al. Mass cytometry and topological data analysis reveal immune parameters associated with complications after allogeneic stem cell transplantation. *Cell Rep.* 20, 2238–2250 (2017). [PubMed: 28854371]
67. Atkuri KR, Stevens JC & Neubert H Mass cytometry: a highly multiplexed single-cell technology for advancing drug development. *Drug Metab. Dispos* 43, 227–233 (2015). [PubMed: 25349123]
68. Wang YJ et al. Single-cell mass cytometry analysis of the human endocrine pancreas. *Cell Metab.* 24, 616–626 (2016). [PubMed: 27732837]
69. Nassar AF, Wisniewski AV & Raddassi K Progress in automation of mass cytometry barcoding for drug development. *Bioanalysis* 8, 1429–1435 (2016). [PubMed: 27323800]
70. Yang YSS et al. High-throughput quantitation of inorganic nanoparticle biodistribution at the single-cell level using mass cytometry. *Nat. Commun* 8, 9 (2017). [PubMed: 28377584]
71. Guo YT, Baumgart S, Stark HJ, Harms H & Muller S Mass cytometry for detection of silver at the bacterial single cell level. *Front. Microbiol* 8, 9 (2017). [PubMed: 28154554]
72. Ivask A et al. Single cell level quantification of nanoparticle-cell interactions using mass cytometry. *Anal. Chem* 89, 8228–8232 (2017). [PubMed: 28691496]
73. Rahman AH, Lavin Y, Kobayashi S, Leader A & Merad M High-dimensional single cell mapping of cerium distribution in the lung immune microenvironment of an active smoker. *Cytometry B Clin. Cytom* 10.1002/cyto.b.21545 (2017).
74. Diggins KE, Ferrell PB & Irish JM Methods for discovery and characterization of cell subsets in high dimensional mass cytometry data. *Methods* 82, 55–63 (2015). [PubMed: 25979346]
75. Kleinstueber K et al. Standardization and quality control for high-dimensional mass cytometry studies of human samples. *Cytometry A* 89A, 903–913 (2016).
76. Krutzik PO, Trejo A, Schulz KR & Nolan GP Phospho flow cytometry methods for the analysis of kinase signaling in cell lines and primary human blood samples. *Methods Mol. Biol* 699, 179–202 (2011). [PubMed: 21116984]

Box 1 |**Preparation of palladium isotopic mass tags ● Timing 8 h**

For the conjugation of monoclonal antibodies with six palladium isotopes, as described in Section 1 of the Procedure, mass tags of Pd@mal-DOTA are prepared using the materials and equipment shown in Fig. 4a,b.

Additional reagents

- Isotope-enriched palladium nitrates with the following purities: ^{102}Pd (91%), ^{104}Pd (96%), ^{105}Pd (98%), ^{106}Pd (99%), ^{108}Pd (99%), and ^{110}Pd (99%) (Trace Sciences International)

! CAUTION Palladium nitrate is toxic. Avoid contact with skin and eyes.

- Maleimido-mono-amide-DOTA (mal-DOTA; Macrocyclics, cat. no. B-272)
- Hydrochloric acid (36.5–38.0% (wt/wt) HCl; Sigma, cat. no. H1758–100ML)

! CAUTION Hydrochloric acid is corrosive. Avoid contact with skin and eyes.

- Liquid nitrogen

! CAUTION Liquid nitrogen has a boiling temperature of $-196\text{ }^{\circ}\text{C}$ at atmospheric pressure. Direct contact can freeze the skin, causing frostbite and cold burns. Protect the hands at all times with cryogenic gloves when handling with liquid nitrogen.

- Dry ice
- Drierite desiccant (VWR, cat. no. 22891–050)

Additional instruments

- Lyophilizer (Labconco, model no. FreeZone 4.5)
- Electrospray ionization mass spectrometer (Waters, model no. Micromass ZQ)

Procedure

1. Dissolve the isotope-enriched palladium nitrates to a 50 mM concentration in hydrochloric acid. Solutions will be dark brown and transparent. Store the solutions for up to 2 years at $4\text{ }^{\circ}\text{C}$.
2. Weigh out ~25 mg of solid mal-DOTA powder into a 2.0-mL Eppendorf tube. Add an appropriate volume of double-distilled water (ddH_2O), then mix well to obtain a 25 mM mal-DOTA solution.
▲ ACRITICAL STEP The aqueous mal-DOTA solution is unstable. The solution should be prepared immediately before use.
3. Pipette 24 μL of 25 mM mal-DOTA solution and 10 μL of 50 mM palladium solution into a 0.2-mL PCR tube. The molar ratio of DOTA to Pd is 1.2:1. The

- slight excess of DOTA chelator is used to avoid free palladium cations in the solution.
4. Cap the tube and vortex to mix. Spin at 1,000*g* for 10 s at room temperature (RT, ~25°C) in a tabletop microcentrifuge.
 5. Immediately snap-freeze the mixture of mal-DOTA and palladium in liquid nitrogen. Keep the PCR tube upright to ensure that the mixture remains at the bottom of the tube.
 6. Place the frozen PCR tubes into a pre-cooled 96-well metal block sitting on dry ice.
 7. Repeat steps 3–6 for each isotope of palladium to be used. All isotopes should be prepared as quickly as possible.
 8. Replace the original caps of all the PCR tubes with caps pierced with a wide-gauge needle.
 9. Lyophilize the mixtures for at least 6 h. This will yield brown or orange solids.
 10. Replace the vented caps with intact caps and place the PCR tubes in a Ziploc bag containing 25 g of Drierite desiccant to protect from moisture.
 - **PAUSE POINT** The lyophilized mass tags can be stored for up to 2 years at –80 °C.
 11. Dissolve the lyophilized mixtures in 50 µL of dimethyl sulfoxide (DMSO), yielding 10 mM solutions of Pd@mal-DOTA mass tags.
 12. Divide the mass tags into aliquots of appropriate volume.
 - **PAUSE POINT** Palladium isotopic mass tags can be stored for up to 1 year at –20 °C.
- ? TROUBLESHOOTING
13. Analyze the palladium isotopic mass tags using ESI-MS in negative-ion mode.
 - ▲ **ACRITICAL STEP** Because mal-DOTA is a triprotic acid and Pd@mal-DOTA is a monoprotic acid, the negative-ion ESI-MS mode should be used for all measurements.

Box 2 |**Quantification of metal-isotope-tagged antibodies ● Timing 1 h**

Two methods are described to quantify MitAbs: an assay based on absorbance at 280 nm (A_{280}) (method A) and a bicinchoninic acid (BCA)-based assay (method B). The A_{280} -based method does not require the generation of a standard curve. The molar extinction coefficient of a typical mammalian IgG antibody with a MW of 150,000 Da is 210,000 M/cm, which is equal to a percentage extinction coefficient of 13.7 for a 1% (wt/vol) (i.e., 10 mg/mL) IgG solution. This assay can be used to quantify the antibodies conjugated with the isotopes of lanthanides, indium, yttrium, and palladium, but not bismuth. The BCA-based method used for the quantification of Bi-tagged antibody requires staining with BCA dyes and measurement of UV-visible absorbance at 562 nm (A_{562}). A calibration curve of A_{562} versus antibody concentration must be generated using IgG standards of known concentrations.

Additional reagents

- BCA protein assay reagent A (Thermo Fisher Scientific, cat. no. 23225)
- BCA protein assay reagent B (Thermo Fisher Scientific, cat. no. 23225)
- IgG control antibody (1.0 mg; R&D Systems, cat. no. MAB004)

Reagent setup

- *BCA working solution.* Combine 1,000 μ L of BCA protein assay reagent A with 20 μ L of BCA protein assay reagent B (50:1, reagent A/B), then mix well by vortexing. The solution should be freshly prepared.
- *IgG antibody standards.* Dissolve 1.0 mg of lyophilized IgG control antibody in 1.0 mL of phosphate-buffered saline (PBS) to obtain a 1,000 μ g/mL IgG antibody standard. Prepare a series of diluted IgG antibody standards at concentrations of 100, 200, 500, and 750 μ g/mL. Store at 4 °C for up to 1 year.

Additional instruments

- UV-visible spectrophotometer (Thermo Fisher Scientific, model no. NanoDrop 2000)

Method A (A_{280} -based quantitative assay)

1. Zero the NanoDrop spectrophotometer with W-buffer.
2. Pipette 2.0 μ L of Y-, Pd-, In-, or Ln-tagged antibody onto the measurement pedestal.
3. Measure the absorbance of each conjugated antibody at 280 nm (A_{280}).
4. Calculate the concentration of the conjugated antibody using the average A_{280} value of three measurements. A concentration of 1,000 μ g/mL corresponds to an A_{280} value of 1.37 absorbance units.

Method B (BCA-based quantitative assay)

1. Pipette 2.0 μL of each IgG antibody standard and Bi-tagged antibody into separate pre-labeled PCR tubes.
2. Add 30 μL of pre-prepared BCA working solution to each PCR tube and mix well by pipetting up and down slowly to avoid microbubbles.
3. Incubate the mixtures at 37 $^{\circ}\text{C}$ in a water bath for 30 min.
4. Cool all PCR tubes to RT.
5. Zero the NanoDrop spectrophotometer with ddH₂O.
6. Measure the absorbance at 562 nm (A_{562}) of all standards and Bi-tagged antibody within 10 min.

▲ **CRITICAL STEP** As the BCA assay does not reach a true end point, color development will slowly continue at RT. If all measurements of A_{562} are completed within 10 min, no substantial error will be introduced.

7. Plot the intensity of the A_{562} value of each IgG antibody standard versus its concentration to generate a calibration curve for the quantitative analysis.
8. Calculate the concentration of Bi-tagged antibody using the average A_{562} value from three measurements.

? TROUBLESHOOTING

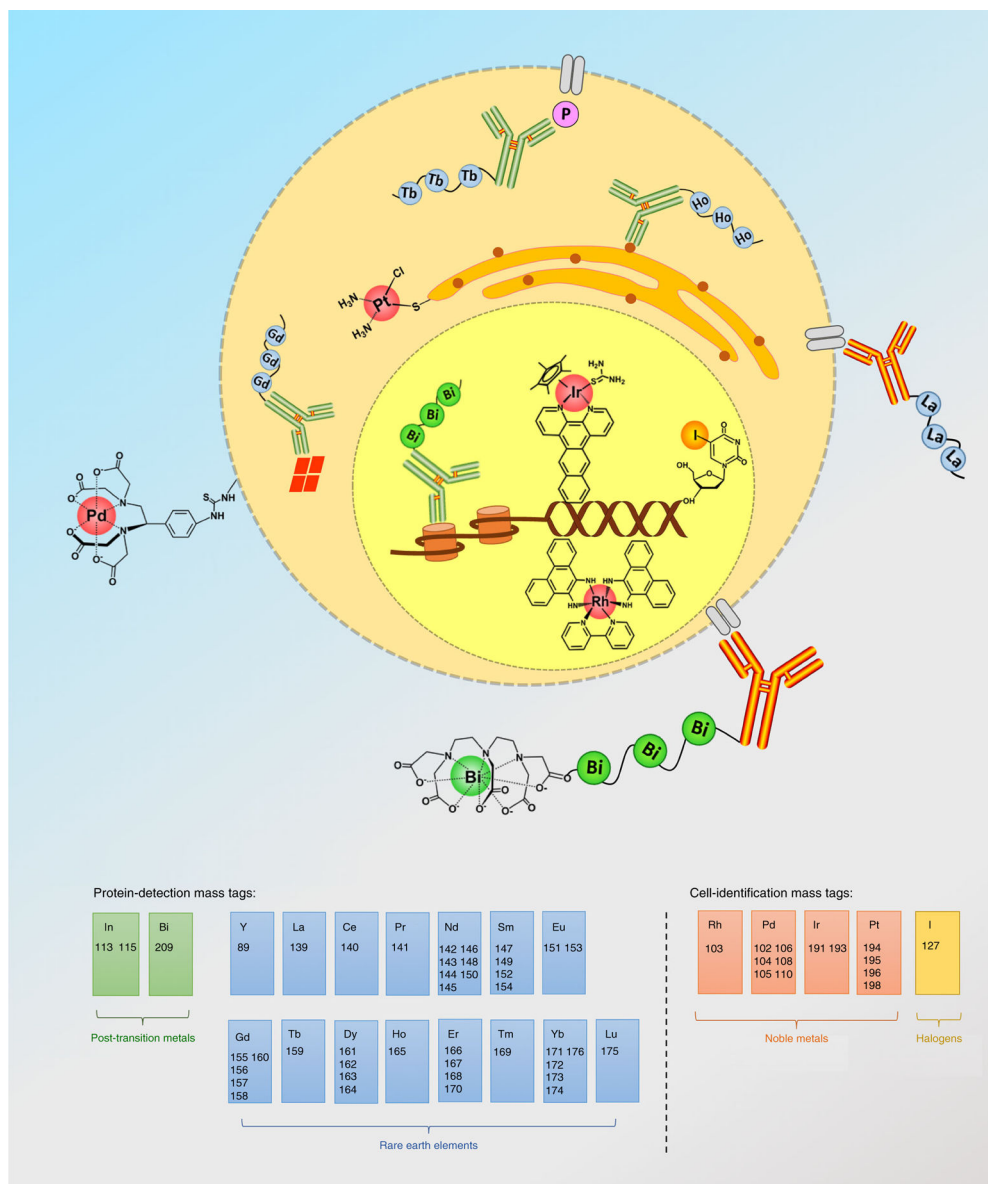


Fig. 1 | Elemental mass tags widely applied in CyTOF.

Elemental mass tags are typically classified as protein-detection mass tags or cell-identification mass tags according to their utilities in CyTOF analysis. To date, 56 stable heavy isotopes have been used in single-cell assays, coming from 15 rare-earth elements (Y, and from La to Lu, except Pm), four noble metals (Rh, Pd, Ir, and Pt), two post-transition metals (In and Bi), and one halogen (I).

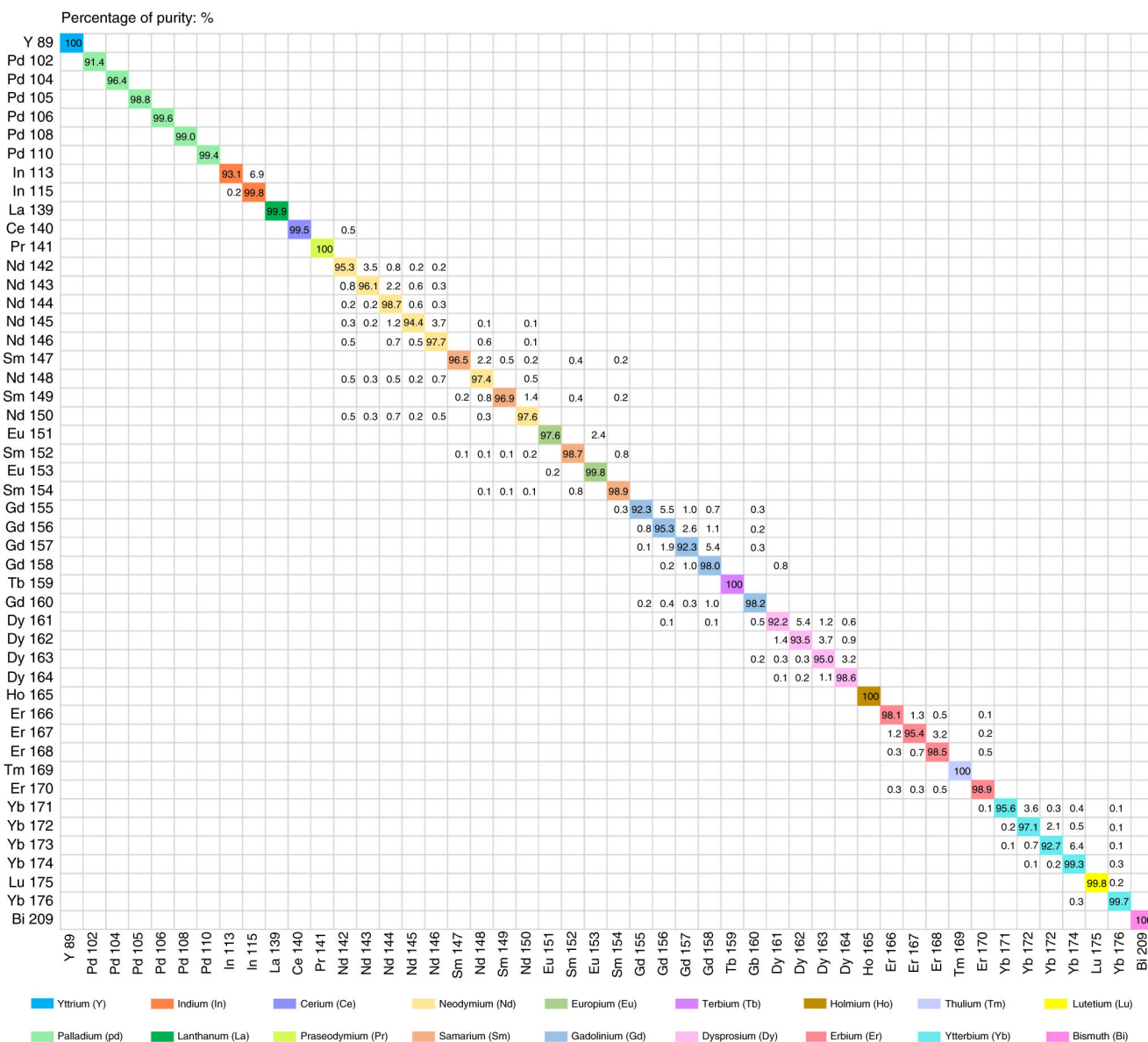


Fig. 2 | Pure metal isotopes tagged in monoclonal antibodies. Forty-eight stable metal isotopes of Y, Pd, In, La, Ce, Pr, Nd, Sm, Eu, Gd, Tb, Dy, Ho, Er, Tm, Yb, Lu, and Bi have been used in protein-detection mass tags. The typical values of isotopic enrichment and spillover impurity are based on the product sheets from Trace Science International and early ICP-MS analytical measurements performed by DVS Sciences and our lab.

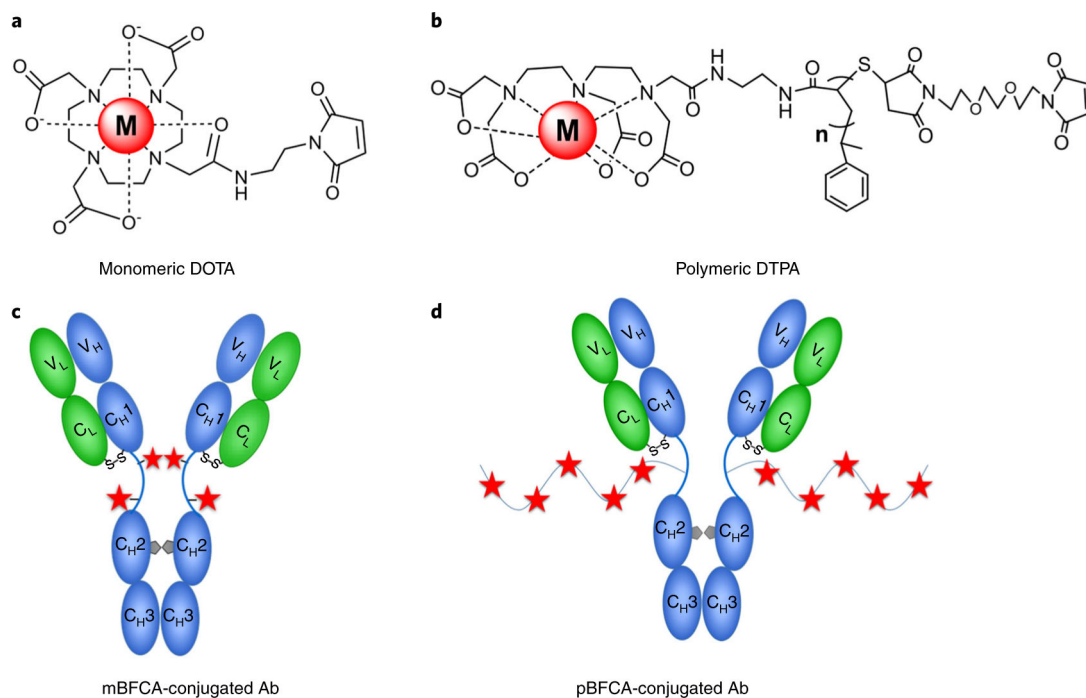


Fig. 3 | Bifunctional chelating agents and corresponding conjugated antibodies.

a,b, Two types of bifunctional chelating agents (BFCAs) are complexed with tagging metal cations: monomeric DOTA (**a**) and polymeric DTPA (**b**). The selected antibody (Ab) is coupled with BFCAs via a biorthogonal reaction of maleimide moieties and sulfhydryl groups of cysteine residues in the hinge region between two heavy chains. **c,d,** Antibody conjugated with monomeric BFCAs (mBFCAs) (**c**) and antibody conjugated with polymeric BFCAs (pBFCAs) (**d**).



Fig. 4 |. Materials and equipment.

a, Liquid nitrogen tank for snap freezing of the solutions of Pd@mal-DOTA complexes, PCR tubes in a 96-well metal block, dry ice for placing frozen sample PCR tubes, and Drierite desiccant for storing dried palladium mass tags to protect them from moisture. **b**, Lyophilizer and pump for ice-drying of palladium mass tags. **c**, CyTOF instruments of v1, v2, and v3 (Helios) used in our lab.

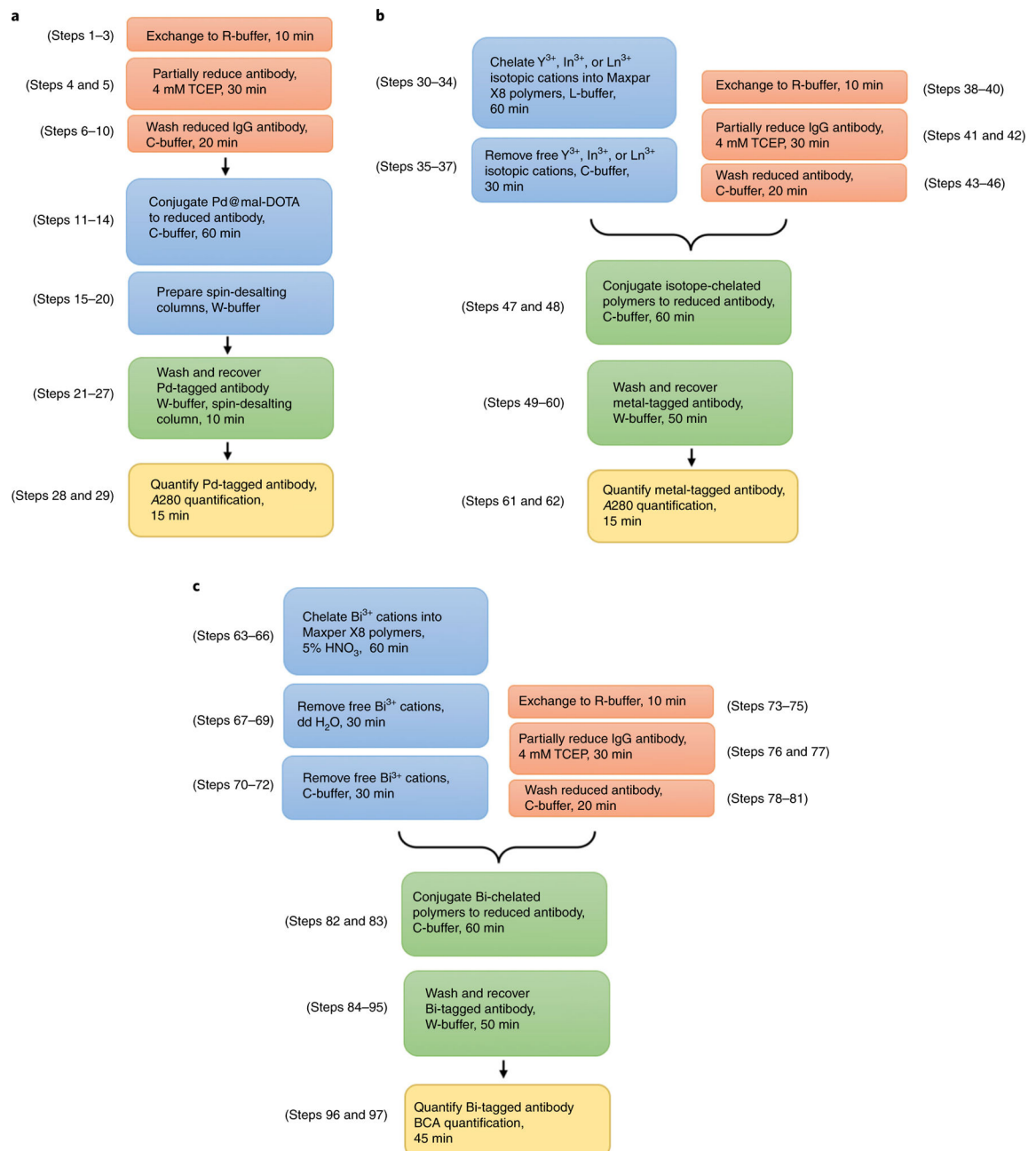


Fig. 5 |. Timing for conjugating antibodies with different metal isotopes.

a, Steps for conjugation of palladium isotopic mass tags. **b**, Steps for conjugation of yttrium, indium, or lanthanide isotopic mass tags. **c**, Steps for conjugation of bismuth mass tag.

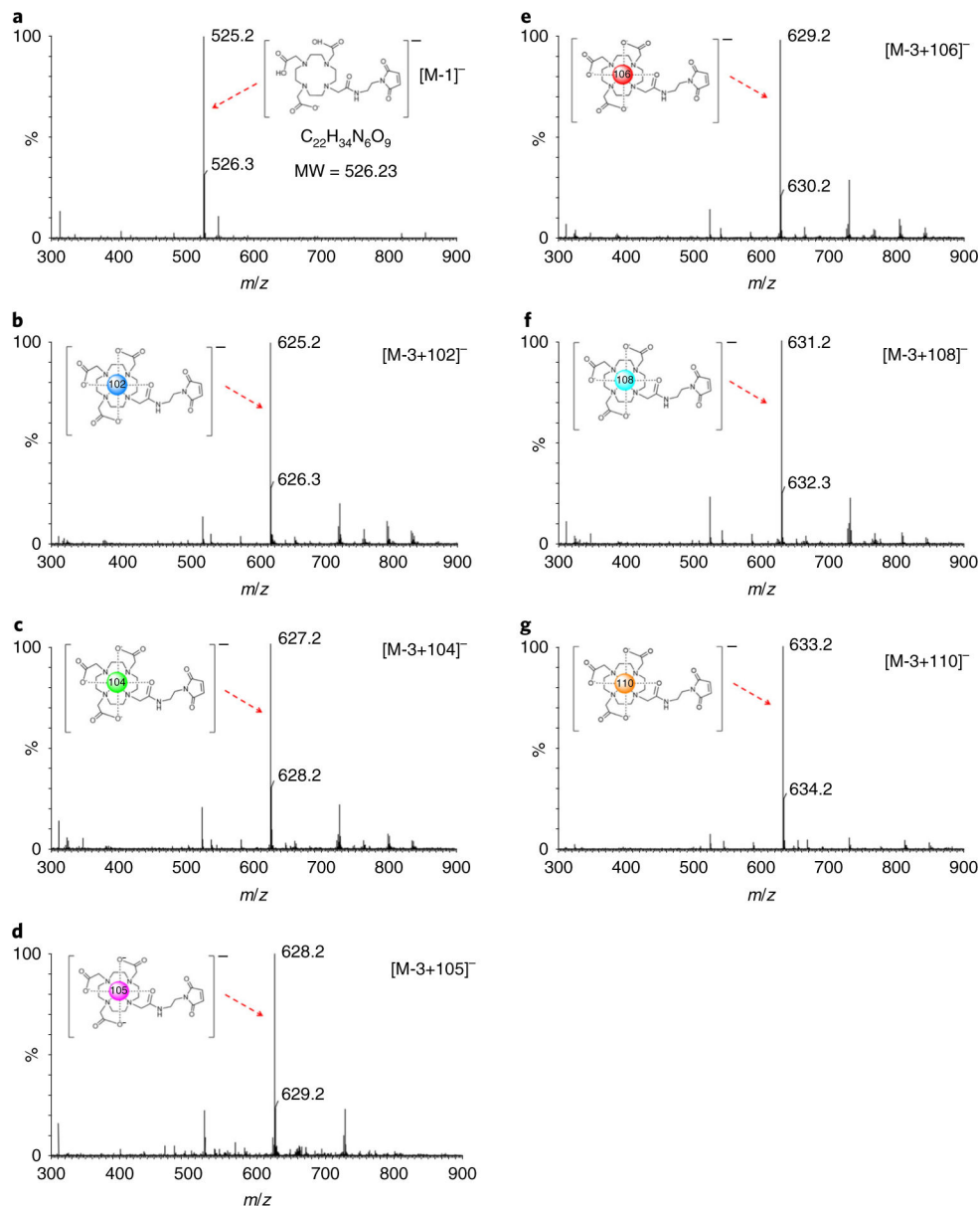


Fig. 6 |. Mass spectra of palladium isotopic mass tags.

a–g. Negative-ion mode mass spectra of mal-DOTA, expected peak $m/z = 525.2$ (**a**), $^{102}\text{Pd}@mal\text{-DOTA}$, expected peak $m/z = 625.2$ (**b**), $^{104}\text{Pd}@mal\text{-DOTA}$, expected peak $m/z = 627.2$ (**c**), $^{105}\text{Pd}@mal\text{-DOTA}$, expected peak $m/z = 628.2$ (**d**), $^{106}\text{Pd}@mal\text{-DOTA}$, expected peak $m/z = 629.2$ (**e**), $^{108}\text{Pd}@mal\text{-DOTA}$, expected peak $m/z = 631.2$ (**f**), and $^{110}\text{Pd}@mal\text{-DOTA}$, expected peak $m/z = 633.2$ (**g**). MW, molecular weight.

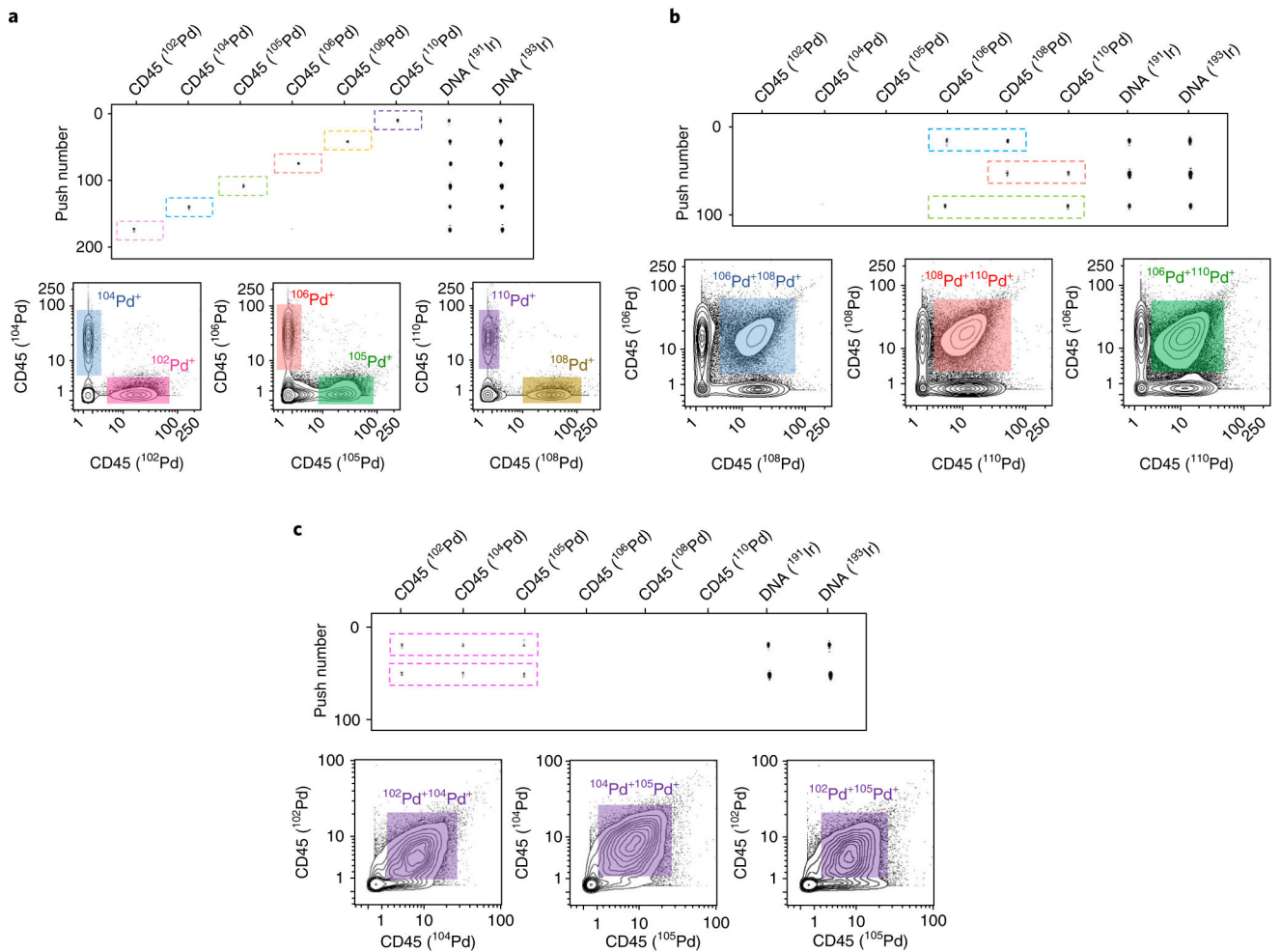


Fig. 7 | Barcoding live Jurkat cells using Pd-tagged CD45 antibodies.

Live Jurkat cells were barcoded using three strategies for combining CD45 antibodies tagged with six palladium isotopes. The top section of each panel shows the CyTOF measurements as ‘rain dots’. The bottom sections show the biaxial contour plots of the indicated isotopes. **a**, 6-choose-1 barcoding strategy: Jurkat cells were stained with each of the six Pd-tagged CD45 antibodies. **b**, 6-choose-2 barcoding strategy: Jurkat cells were stained with ^{106}Pd - and ^{108}Pd -tagged CD45 antibodies, ^{108}Pd - and ^{110}Pd -tagged CD45 antibodies, or ^{106}Pd - and ^{110}Pd -tagged CD45 antibodies. **c**, 6-choose-3 barcoding strategy: Jurkat cells were stained with ^{102}Pd -, ^{104}Pd -, and ^{105}Pd -tagged CD45 antibodies.

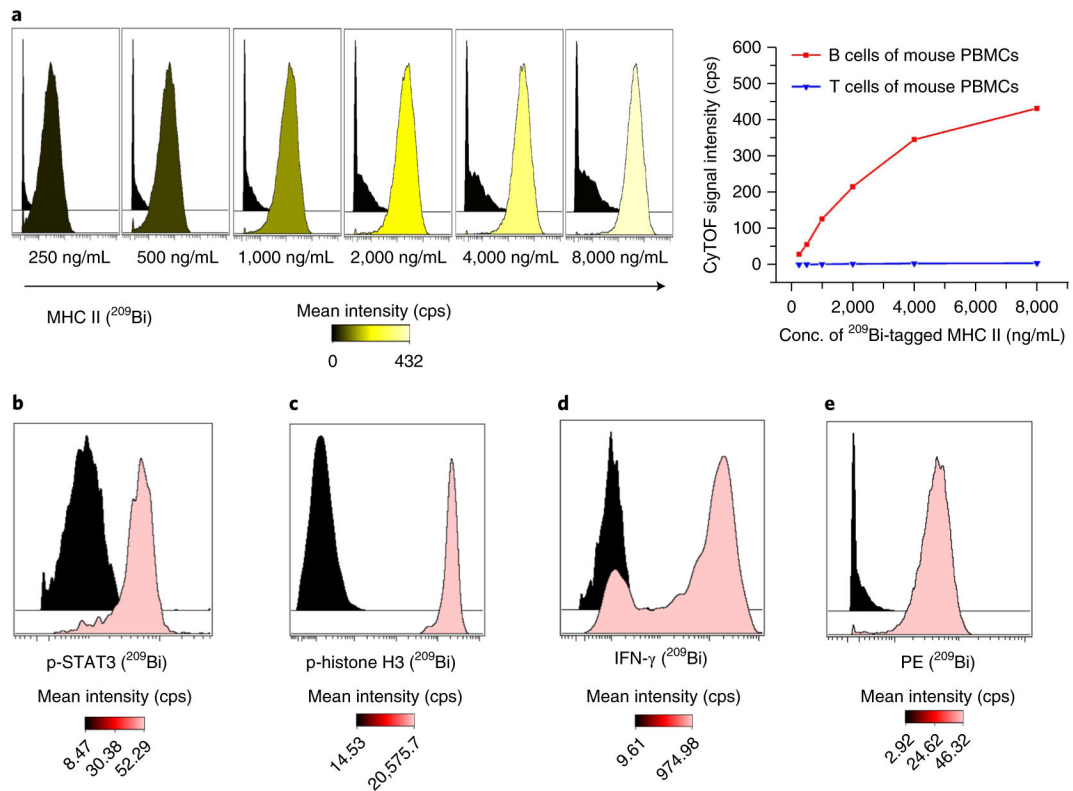


Fig. 8 | Titrations of various ^{209}Bi -tagged antibodies.

a, Titration histograms of ^{209}Bi -tagged MHC class II antibody with mouse PBMCs and titration curves in B cells and T cells. **b–e**, Titration histograms at the optimal concentrations. **b**, ^{209}Bi -tagged p-STAT3 antibody of 1,000 ng/mL with CD33⁺CD14⁺ monocytes in human PBMCs with stimulation of 100 ng/mL IL-10 as positive control and without stimulation as negative control. **c**, ^{209}Bi -tagged p-histone H3 antibody of 2,000 ng/mL with mesodermal progenitors derived from human embryonic stem cells on day 6 of differentiation as positive control and cardiomyocytes derived from human embryonic stem cells as negative control. **d**, ^{209}Bi -tagged IFN- γ antibody of 1,000 ng/mL with natural killer cells with stimulation of 50 ng/mL IL-12 and IL-18 as positive control and without stimulation as negative control. **e**, ^{209}Bi -tagged anti-PE antibody of 1,000 ng/mL with PE-conjugated CD3-antibody-stained T cells and B cells in human PBMCs as positive and negative controls, respectively. cps, counts per second.

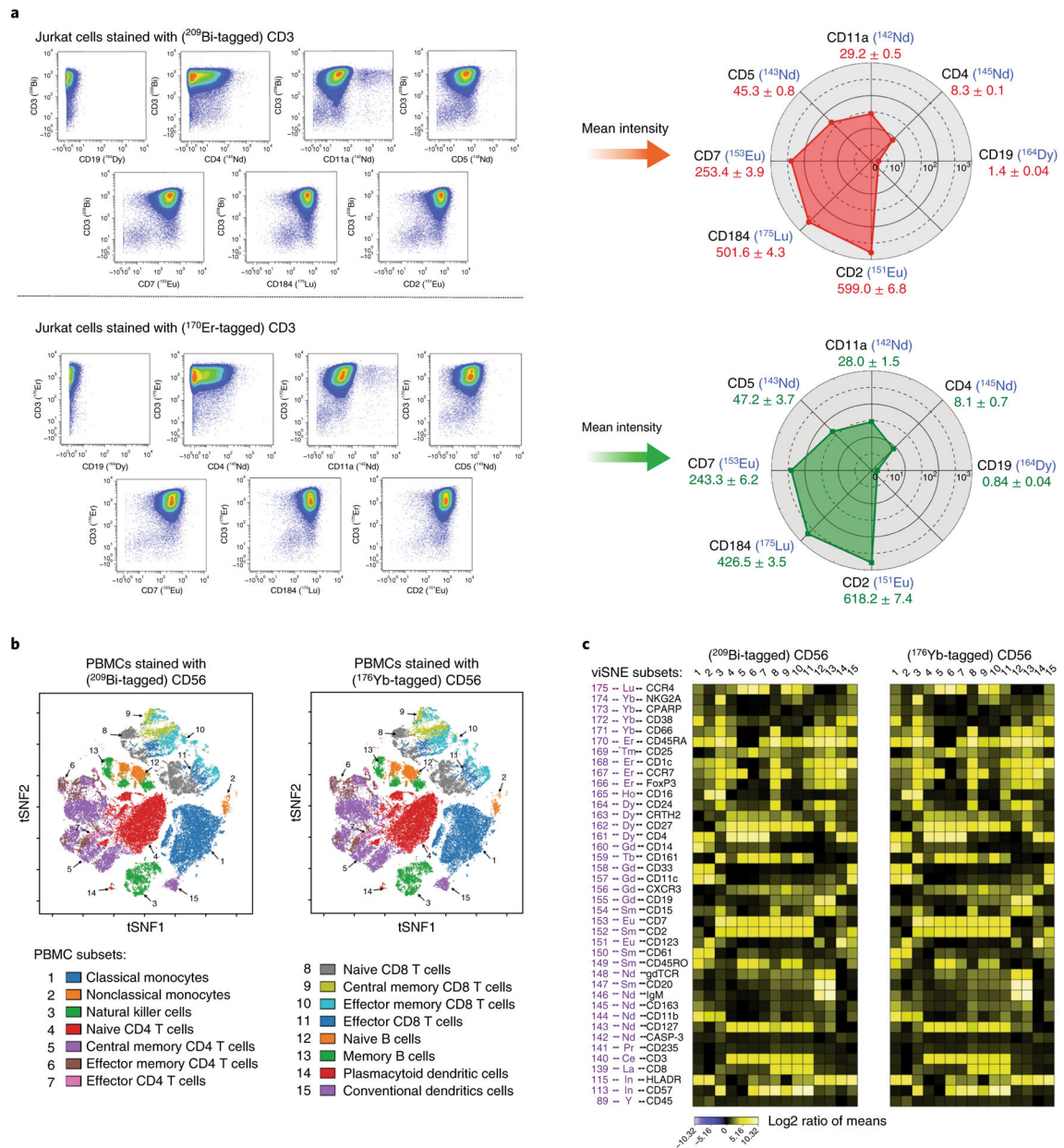


Fig. 9 | Comparisons of bismuth- and lanthanide-tagged antibodies in single-cell assays.
a, Left, Comparable biaxial scatter plots of CD3 versus CD19, CD4, CD11a, CD5, CD7, CD184, and CD2 in Jurkat cells stained with either ²⁰⁹Bi- or ¹⁷⁰Er-tagged CD3. **a**, Right, Data analysis from plots at left, depicted in radar charts of the mean intensities of the seven markers. **b**, Comparable immunophenotypic gating as shown by viSNE plots of data from human PMBCs stained for 40 markers and either ²⁰⁹Bi- or ¹⁷⁶Yb-tagged CD56. Fifteen cell subsets were identified (gating hierarchy described in Supplementary Fig. 2). **c**, Data from **b** depicted with heat maps. There is a strong correlation between data collected using ²⁰⁹Bi- and ¹⁷⁶Yb-tagged CD56 (Pearson correlation, $r = 0.991$, $P < 0.00001$, Supplementary Fig. 1b).

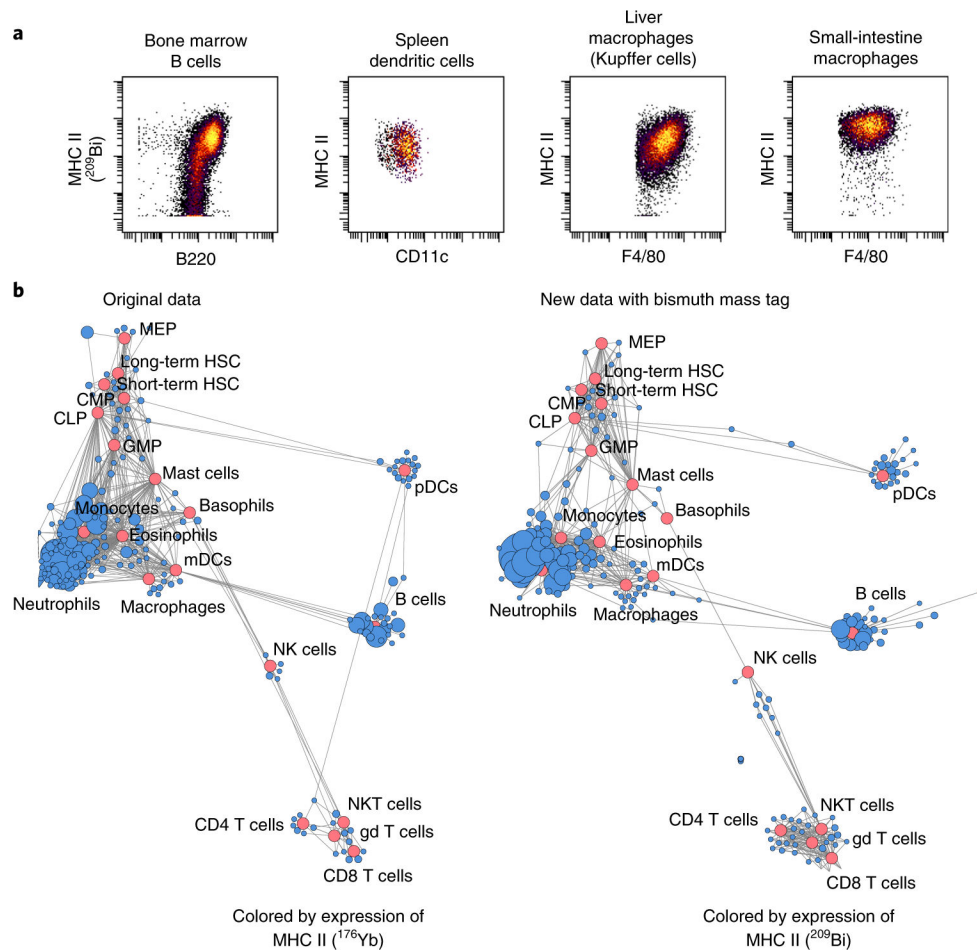


Fig. 10 | Application of ^{209}Bi -tagged MHC class II antibody in systematic immune analysis. **a**, Measurements of expression of MHC class II in different mouse organ cells. **b**, Comparison of ^{209}Bi - and ^{176}Yb -tagged MHC class II antibodies in scaffold maps, revealing immune organization of the bone marrow for C57BL/6 mice. Red nodes denote landmark manually gated cell populations; blue nodes present unsupervised cell clusters from the same data. Data in left panel of **b** from ref.⁹. gd T cells, $\gamma\delta$ T cells; HSC, hematopoietic stem cell; mDCs, myeloid dendritic cells; NK, natural killer; NKT, natural killer T; pDCs, plasmacytoid dendritic cells.

Table 1 |

The oxides and their ratios of light lanthanides, affected CyTOF detection channels, and overlapped heavy lanthanide ions

Light lanthanides			Heavy lanthanides	
Interfering elements	One positive charge oxide ions	Ratios of oxides (%) ^a	Mass spectrum overlapped ions	Detection channels (m/z)
Lanthanum	¹³⁹ La ¹⁶ O ⁺	3.0	¹⁵⁵ Gd ⁺	155
Cerium	¹⁴⁰ Ce ¹⁶ O ⁺	3.0	¹⁵⁶ Gd ⁺	156
Praseodymium	¹⁴¹ Pr ¹⁶ O ⁺	2.4	¹⁵⁷ Gd ⁺	157
Neodymium	¹⁴² Nd ¹⁶ O ⁺	2.1	¹⁵⁸ Gd ⁺	158
	¹⁴³ Nd ¹⁶ O ⁺		¹⁵⁹ Tb ⁺	159
	¹⁴⁴ Nd ¹⁶ O ⁺		¹⁶⁰ Gd ⁺	160
	¹⁴⁵ Nd ¹⁶ O ⁺		¹⁶¹ Dy ⁺	161
	¹⁴⁶ Nd ¹⁶ O ⁺		¹⁶² Dy ⁺	162
	¹⁴⁸ Nd ¹⁶ O ⁺		¹⁶⁴ Dy ⁺	164
	¹⁵⁰ Nd ¹⁶ O ⁺		¹⁶⁶ Er ⁺	166
	Samarium		¹⁴⁷ Sm ¹⁶ O ⁺	0.5
¹⁴⁹ Sm ¹⁶ O ⁺		¹⁶⁵ Ho ⁺	165	
¹⁵² Sm ¹⁶ O ⁺		¹⁶⁸ Er ⁺	168	
¹⁵⁴ Sm ¹⁶ O ⁺		¹⁷⁰ Er ⁺	170	
Europium	¹⁵¹ Eu ¹⁶ O ⁺	0.1	¹⁶⁷ Er ⁺	167
	¹⁵³ Eu ¹⁶ O ⁺		¹⁶⁹ Tm ⁺	169
Gadolinium	¹⁵⁵ Gd ¹⁶ O ⁺	1.5	¹⁷¹ Yb ⁺	171
	¹⁵⁶ Gd ¹⁶ O ⁺		¹⁷² Yb ⁺	172
	¹⁵⁷ Gd ¹⁶ O ⁺		¹⁷³ Yb ⁺	173
	¹⁵⁸ Gd ¹⁶ O ⁺		¹⁷⁴ Yb ⁺	174
	¹⁶⁰ Gd ¹⁶ O ⁺		¹⁷⁶ Yb ⁺	176
Terbium	¹⁵⁹ Tb ¹⁶ O ⁺	1.2	¹⁷⁵ Lu ⁺	175

^aThe values are based on the published ratios of lanthanide oxides measured by inductively coupled plasma mass spectrometry analysis⁴³.

Table 2 |

Troubleshooting table

Step	Problem	Possible reason	Solution
Box 1, step 12	Inefficient conjugation of mass tags to antibodies	Maleimide-functionalized groups lose activities	Minimize the number of freeze-thaw cycles that the palladium isotopic mass tags undergo
Box 2, step 8	Absorbance at 562 nm is variable or does not increase with antibody concentration	Working solution and antibody are not mixed well	Mix thoroughly by pipetting up and down, and make sure that all the liquid is at the bottom of tube; incubate with gentle shaking
27	Inefficient washing by desalting columns	Improper sample loading	Load the sample directly into the center of the resin bed and carefully touch the pipette tip to the resin to expel the antibody sample
61	Lower recovery of antibody conjugates (<50%)	Precipitation induced by excess metal cations or denaturation due to reduction	Ensure complete washes of the polymer and metal cations with post-centrifugation filter volumes of <20 μ L. Ensure that reduction time is not >30 min
61	Higher recovery of antibody conjugates (>95%)	Carrier proteins	Check manufacturer specifications for carrier proteins (BSA, gelatin, or other protein stabilizer). Obtain carrier-free stock or purify the antibody away from the carrier
		Improper antibody starting amount	Measure the concentration of the starting antibody stock by A_{280} ; ensure that the conjugation amount is 100 μ g
70	White flocculent precipitate observed	The pH exchange causes the precipitation of bismuth	Redissolve the precipitate in 5.0–10.0% (vol/vol) HNO_3 solution. Mix by vigorous pipetting up and down. Filter the solution through a syringe filter with a 200-nm nylon membrane. Wash the polymers again in 0.5% (vol/vol) HNO_3 solution again