

UC Irvine

UC Irvine Previously Published Works

Title

Spinal cord dopamine D2/D3 receptors: in vivo and ex vivo imaging in the rat using 18F/11C-fallypride

Permalink

<https://escholarship.org/uc/item/3455n6c9>

Journal

Nuclear Medicine and Biology, 41(10)

ISSN

0969-8051

Authors

Kaur, Jasmeet
Khararjian, Armen
Coleman, Robert A
[et al.](#)

Publication Date

2014-11-01

DOI

10.1016/j.nucmedbio.2014.08.002

Peer reviewed

Published in final edited form as:

Nucl Med Biol. 2014 ; 41(10): 841–847. doi:10.1016/j.nucmedbio.2014.08.002.

Spinal Cord Dopamine D2/D3 Receptors: In Vivo and Ex Vivo Imaging in the Rat using $^{18}\text{F}/^{11}\text{C}$ -Fallypride

Jasmeet Kaur, Armen Khararjian, Robert A. Coleman, Cristian C. Constantinescu, Min-Liang Pan, and Jogeshwar Mukherjee

Preclinical Imaging, Department of Radiological Sciences, University of California-Irvine, Irvine, CA 92697

Abstract

Objectives—Spinal cord is known to be innervated with dopaminergic cells with catecholaminergic projections arising from the medulla and pons and dopaminergic transmission in the spinal cord is vital for sensory and motor function. Our goal was to evaluate and compare the imaging capability of dopamine D2/D3 receptors in the rat spinal cord using PET ligands ^{18}F -fallypride and ^{11}C -fallypride.

Methods—Male Sprague-Dawley rats were used in all in vitro and in vivo studies. Spinal cord and brain sections were used for in vitro autoradiography and ex vivo autoradiography. For in vivo studies animals received a ^{18}F -fallypride scan or a ^{11}C -fallypride PET scan. The spinal cord and the brain were then harvested, flash-frozen and imaged ex vivo. For in vivo analysis Logan plots with cerebellum as a reference was used to evaluate binding potentials (BP). Tissue ratios were used for ex vivo analysis. Drug effects were evaluated using clozapine, haloperidol and dopamine were evaluated on spinal cord sections in vitro.

Results—In vitro studies showed ^{18}F -fallypride binding to superficial dorsal horn (SDH), dorsal horn (DH), ventral horn (VH) and the pars centralis (PC). In the cervical section, the greatest amount of binding appeared to be in the SDH. Ex vivo studies showed approximately 6% of ^{18}F -fallypride in SDH compared to that observed in the striatum. In vivo analysis of both ^{18}F -fallypride and ^{11}C -fallypride in the spinal cord were comparable to that in the extrastriatal regions. Haloperidol and clozapine displaced more than 75% of the ^{18}F -fallypride in spinal cord sections.

Conclusions—Our studies showed ^{18}F -fallypride and ^{11}C -fallypride binding in the spinal cord in vitro and in vivo. The binding pattern correlates well with the known distribution of dopamine D2/D3 receptors in the spinal cord.

Keywords

Spinal cord; Dopamine receptors; PET; ^{18}F -fallypride; ^{11}C -fallypride

© 2014 Elsevier Inc. All rights reserved.

*Address Correspondence to: Jogesh Mukherjee, Ph.D., B138 Medical Sciences, Department of Radiological Sciences, University of California – Irvine, Irvine, CA 92697-5000, Tel# (949) 824-2018, Fax# (949) 824-2344, j.mukherjee@uci.edu.

Publisher's Disclaimer: This is a PDF file of an unedited manuscript that has been accepted for publication. As a service to our customers we are providing this early version of the manuscript. The manuscript will undergo copyediting, typesetting, and review of the resulting proof before it is published in its final citable form. Please note that during the production process errors may be discovered which could affect the content, and all legal disclaimers that apply to the journal pertain.

1. Introduction

Spinal cord has been known to be innervated with catecholaminergic projections. Autoradiographic and immunohistochemical studies in rodent spinal cord sections show the presence of dopamine D2-like receptors (Levant and McCarson, 2001; Holstege et al., 1998). Apomorphine induced hypotension in rats was blocked by the D2 receptor antagonist, domperidone which is not able to cross the blood brain barrier has shown presence of D2 receptors in the spinal cord (Lahlou, 2000; Lahlou, 2003). Immunocytochemical studies have shown a distribution of D2 receptors throughout the spinal cord (van Dijken et al., 1996), and immunochemistry studies of the central nervous system indicate that D2 receptors in the spinal cord may be involved in regulation of bladder control (Ishizuka et al., 2002). Dopamine D3 receptors were found in lower abundance compared to the D2 receptors (Levant and McCarson, 2001).

No published report is available on non-invasive imaging of these receptors in the spinal cord. Dopaminergic system in the spinal cord may be involved as targets for 1) treatment of restless leg syndrome (e.g., using the dopamine agonist pramipexole); 2. chronic pain (nociception; Keeler et al., 2012); 3. antipsychotic drugs, thus causing side-effects (e.g., akathisia); 4. antiparkinsonian drugs; 5. abnormal movements from long-term L-DOPA treatment, and 6. various sensorimotor functions (Barriere et al., 2004; Cavalloti et al., 2004).

Unlike the spinal cord, imaging studies of brain dopamine D2/D3 receptors using positron emission tomography (PET) are being carried out using various imaging agents including fallypride in various neurological and psychiatric disorders (e.g., Buchsbaum et al., 2006; Fisher 2013). More recently, dopamine receptors in the pancreas have been studied as potential surrogate markers for tracking insulin-secreting islet cells in the pancreas or in transplanted islet cells (Garcia et al., 2011, 2014). The presence of D2-like receptors in the intestines has been reported to affect motility in mice (Liz et al., 2006). Using ^{124}I -epidepride, a dopamine D2/D3 receptor antagonist for extended time imaging, we have reported activity in the intestines at late times (Pandey et al., 2014). It remains to be shown if this intestinal activity is dopamine D2/D3 receptor bound.

Our goal in this work is to evaluate the feasibility of imaging spinal cord dopamine D2/D3 receptors using PET radiotracers, ^{18}F -fallypride and ^{11}C -fallypride. ^{18}F -fallypride is an established high affinity D2/D3 radioligand and has been used in numerous human and primates studies (e.g., Mukherjee et al., 1999, Mukherjee et al., 2002). Its high affinity for the binding sites has allowed imaging of extrastriatal regions in the brain that have a lower density of receptors in the rat (Constantinescu et al., 2011). ^{18}F -fallypride in rats has sufficient bone uptake in the vertebral column due to ^{18}F -fluoride and can confound quantitation during in vivo imaging, we used comparative in vivo imaging with ^{11}C -fallypride. ^{11}C -fallypride has been shown to possess properties similar to ^{18}F -fallypride in delineating extrastriatal regions in the brain (Mukherjee et al., 2004).

We first studied the possibility of visualizing dopamine receptors in vitro and ex vivo in rodent spinal cord using ^{18}F -fallypride. The spinal cord was split into four sections cervical,

thoracic, lumbar, and sacral regions. In vivo and ex vivo microPET studies using ^{18}F -fallypride and ^{11}C -fallypride in rodents were then performed to evaluate spinal cord binding, and this binding was compared to binding in the striatum within the brain where binding is known to be very strong (Mukherjee et al., 1999). ^{11}C -fallypride was used in the in vivo and ex vivo microPET studies to account for bone uptake issues of ^{18}F -fluoride and which is not an issue for autoradiographic studies. Drug effects in vitro were measured against ^{18}F -fallypride using antagonists haloperidol and clozapine and agonist dopamine for dopamine D2/D3 receptors in autoradiographic studies.

2. Materials and Methods

2.1 General Methods

All chemicals and solvents were of analytical or HPLC grade from Aldrich Chemical Co. and Fisher Scientific. Electrospray mass spectra were obtained on a Model 7250 mass spectrometer (Micromass LCT). Proton NMR spectra were recorded on a Bruker OMEGA 500 MHz spectrometer. Analytical thin layer chromatography (TLC) was carried out on silica coated plates (Baker-Flex, Phillipsburg, NJ). Chromatographic separations were carried out on preparative TLC (silica gel GF 20×20 cm 2000 micron thick; Alltech Assoc. Inc., Deerfield, IL) or silica gel flash column or semi-preparative reverse-phase columns using the Gilson high performance liquid chromatography (HPLC) systems. High specific activity ^{18}F -fluoride was produced in the MC-17 cyclotron using oxygen-18 enriched water (^{18}O to ^{18}F using p, n reaction) and ^{11}C -carbondioxide was produced using a nitrogen gas target (^{14}N to ^{11}C using p, α reaction). The high specific activity ^{18}F -fluoride and ^{11}C -carbondioxide were used in subsequent reactions which were carried out in automated radiosynthesis units (chemistry processing control unit (CPCU) for ^{18}F -fallypride and GE Tracer Lab FXC Pro for ^{11}C -fallypride). Fluorine-18 and carbon-11 radioactivity were counted in a Capintec CRC-15R dose calibrator while low level counting was carried out in a Capintec Caprac-R well-counter. Radioactive thin layer chromatographs were obtained by scanning in a Bioscan system 200 Imaging scanner (Bioscan, Inc., Washington, DC). Rat brain and spinal cord slices were prepared at 20 μm thick using a Leica 1850 cryotome. Fluorine-18 autoradiographic studies were carried out by exposing tissue samples on storage phosphor screens (Perkin Elmer Multisensitive, Medium MS). The apposed phosphor screens were read and analyzed by OptiQuant acquisition and analysis program of the Cyclone Storage Phosphor System (Packard Instruments Co., Boston, MA). A preclinical Inveon dedicated PET scanner (Siemens Medical Solutions, Knoxville, TN) with a transaxial FWHM of 1.46 mm, and axial FWHM of 1.15 mm (Constantinescu and Mukherjee, 2009) was used for the PET studies. Both in vivo and ex vivo PET images of rat brains were obtained and analyzed using ASIProVM software. All animal studies were approved by the Institutional Animal Care and Use Committee of University of California-Irvine.

2.2 Radiopharmaceutical

2.2.1 ^{18}F -Fallypride—The synthesis of ^{18}F -fallypride (Fig-1) was carried out in the chemical process control unit (CPCU) using modifications of previously reported methods (Mukherjee et al., 1995, 2002). Purification of ^{18}F -fallypride was carried out by high

performance liquid chromatography (HPLC) separation on an Econosil reverse-phase C-18 semi-prep column 250 × 10 mm; 10µm particle size (Alltech Assoc., Deerfield, IL). Eluents used were 60% acetonitrile and triethylamine (0.1%) in water at a flow rate of 2.5 ml/min in a Gilson Gradient System consisting of one UV detector with wavelength fixed at 280 nm and a radiation flow detector. The radioactive fraction appearing at 20 min was collected, solvents removed and the residue was taken up in sterile saline and passed through a Whatman 0.22-µm filter and dispensed for in vitro and in vivo studies in specific activity was 74 GBq/µmol with a radiochemical purity of >98%.

2.2.2 ¹¹C-Fallypride—The synthesis of ¹¹C-fallypride (Fig-1) was carried out using modifications of our previously described method (Mukherjee et al., 2004). The two major differences were the use of ¹¹C-methyl triflate instead of ¹¹C-methyl iodide for ¹¹C-methylation and the automated unit synthesis unit, GE Tracerlab was a single combined unit, which synthesized the ¹¹C-methyl triflate from ¹¹C-carbondioxide and reacted it with the phenolic precursor to provide ¹¹C-fallypride. Chromatographic separation was carried out as described above. The radiochemical yield of ¹¹C-fallypride was in the range of 30 to 40% decay-corrected from ¹¹C-methyl triflate and specific activity was 37 GBq/µmol with a radiochemical purity of >98%.

2.3 In Vitro Studies

Adult, Sprague-Dawley rats (250–300 g, from Charles River) were housed with free access to laboratory chow and water. The temperature and humidity-controlled animal facility had a 12 hrs dark-light cycle. Rats were obtained at least 7 days before the experiment. Rats were anesthetized and decapitated and the different regions of the spinal cord were rapidly dissected and removed in cold condition and frozen in cold isopentane solution. The cervical, thoracic, lumbar and sacral portion of the spinal cord were embedded separately with freezing medium and stored in –20 °C freezer. Spinal cord coronal sections (20µm) of the cervical, thoracic, lumbar and sacral regions were obtained. The brain of these rats were also excised and coronal slices contained regions known to have dopamine receptors which include the striata and cortex.

Slides containing the brain and spinal cord sections were preincubated in Tris buffer (50 mM Tris HCl, 2.5 mM CaCl₂, 125 mM NaCl, 1 mM MgCl, 5 mM KCl, 0.1 mM sodium ascorbate, pH 7.4) at room temperature for 10 mins. Sections were then incubated with ¹⁸F-fallypride (37–93 kBq/cc; fallypride concentration <1 nM) for a period of 1 hr at 37 °C in the above Tris buffer in a total buffer volume of 60 mL. The nonspecific binding was measured in the presence of 10 µM sulpiride. After incubation, slides were washed twice (each wash lasting one minute) with ice-cold buffer. Slides were then quickly dipped in cold deionized water, air dried, and exposed to a phosphor screen for 24 hours. The autoradiographs were generated using the Phosphor Cyclone Imager. The amount of binding was evaluated in digital light units (DLU/mm²) using OptiQuant acquisition and analysis program (Packard Instruments Co.).

Drug competition of ¹⁸F-fallypride was evaluated against the drugs clozapine, haloperidol and dopamine for dopamine D2/D3 receptors and SCH 23390 for dopamine D1 receptors.

Aliquots of the different drugs at defined final concentrations (dopamine 1 μM and 20 μM , clozapine 1 μM and 20 μM , haloperidol 1 μM and 20 μM and SCH 23390 1 μM) were added to the respective incubation chambers. Slides were incubated with 70–100 kBq/cc of ^{18}F -fallypride in buffer in the presence of the various drugs and control (no drug added) and incubated for 1 hour at 37°C. Effects of various drugs were tested on the spinal cord and brain sections. After 60 minute incubation, the slides were washed with cold Tris buffer (2×3 min) and cold deionised water (1×3 min). The slides were dried with a gentle stream of air and left apposed to phosphor screens overnight. The binding of ^{18}F -fallypride in spinal cord and brain were read with the Cyclone Phosphor Imager as described above (Packard Instruments Co.)

2.4 Ex Vivo Studies

Rats received ^{18}F -fallypride (16–37 MBq) through tail i.v. injection, and nonspecific binding group of rat received 10 μM sulpiride 5 minutes prior to administration of ^{18}F -fallypride. Rats were decapitated after 3 hrs receiving the i.v. injection of ^{18}F -fallypride and the coronal sections of brain and spinal cord was isolated. The spinal cords were rapidly dissected and removed in cold condition and frozen with cold isopentane. The cervical, thoracic, lumbar and sacral portion of spinal were embedding separately with freezing medium and stored at -20 °C. The different parts of spinal cord were cut at 20 μm on a cryostat, thaw-mounted onto gelatin coated slides and put into a plate for exposure overnight. The binding of ^{18}F -fallypride in different regions of spinal cord was read with the cyclone.

2.5 MicroPET Imaging Studies

Male Sprague-Dawley rats (250–300 g) were single housed in a climate controlled room and had full access to food and water. The rats were fasted 24 hours prior to time of scan. On the day of the study, rats were anesthetized using 4.0% isoflurane. The rat was then positioned on the scanner bed by placing it on a warm-water circulating heating pad and kept anesthetized with 2.5% isoflurane anesthesia applied using a nose-cone. A transmission scan of 20 mins duration was subsequently acquired using the Co-57 source for attenuation correction. Preparation of dose injection was as follows: approximately 16 MBq of ^{18}F -fallypride or approximately 150 MBq of ^{11}C -fallypride was drawn into a 1 mL syringe with a 25 gauge needle and diluted with sterile saline to a final volume of 0.3 mL. The dose was injected intravenously into the tail vein of the rat. Isoflurane was reduced and maintained at 2.5% following injection. Scans were carried out for 90 minutes and acquired by the Inveon MicroPET in full list mode. All images were corrected for scatter, attenuation and radioactive decay. List-mode data from the in vivo scans were sorted dynamically into multiple frames for ^{18}F -fallypride and ^{11}C -fallypride. Image reconstruction was performed with an OSEM3D/fast MAP algorithm (16 OSEM 3D subsets, 2 iterations, 18 MAP iterations, 0 smoothing factor) resulting in $128 \times 128 \times 159$ image array with a 0.79 mm pixel size. Images were visualized and analyzed with ASIPro (CTI Concorde Microsystems, LLC.) and PMOD (PMOD Technologies, Inc.) software. Volumes of interest (VOIs) were drawn on spinal cord and in the brain on D2/D3 receptor rich areas including striatum as well as cerebellum, a region devoid of D2/D3 receptors. For analysis of the brain regions from in vivo PET all images were first co-registered to an MR brain template (Schweinhart

et.al 2003) to allow the use of standard VOIs following a procedure described previously (Constantinescu et.al, 2011). Time-activity curves from all regions were extracted and used to compute binding potentials (BP_{ND}) using Logan graphical analysis (Logan et.al, 1996) with cerebellum as a reference region.

2.6 Ex vivo MicroPET

After completion of the in vivo MicroPET ^{18}F -fallypride and ^{11}C -fallypride scans, rats were sacrificed and the brain and spinal cord was extracted for ex vivo MicroPET imaging. The whole brain and spinal cord were placed in a hexagonal polystyrene weighing boat and covered with powdered dry ice. This boat was placed securely on the scanner bed and a transmission scan acquired. Both organs were placed side-by-side on the scanner bed and *ex vivo* scanning proceeded for 30 minutes. List mode was collected in a single frame and reconstruction of images was similar to the procedure previously described. Images were analyzed using ASIPRO VM software. The 30 min ex vivo scans were reconstructed with Fourier rebinning and 2D filtered back projection algorithm with a Hanning filter and cutoff at Nyquist frequency.

3. RESULTS

3.1 In Vitro Autoradiographic Studies

The gray matter in the spinal cord sections consisted of the superficial dorsal horn (SDH), dorsal horn (DH), ventral horn (VH) and the pars centralis (PC) as shown in Fig-2A. In the cervical section, the greatest amount of binding appeared to be in the SDH, followed by the DH and VH and lastly the PC (Fig-2B, D). In the presence of sulpiride, displacement of ^{18}F -fallypride occurred from all the grey matter regions (Fig-2C) with the extent of reduction being 68% to 75% (Table-I). Similar extent of binding of ^{18}F -fallypride was observed for the thoracic and lumbar regions.

White matter has the potential to serve as a reference region due to the low binding of ^{18}F -fallypride. The gray matter to white matter ratio of ^{18}F -fallypride of the spinal cord section is listed in Table I. Binding generally appears to decrease as the spinal column descends with the cervical region displaying the highest amount of binding, followed by the thoracic and lumbar regions. Within each region, there was also decreased binding from the exterior to the interior regions of the spinal cord. For each region, the highest amount of binding occurred in the SDH, followed by the DH then by the PC and the VH. For the three spinal regions, displacement by sulpiride suggested that ^{18}F -fallypride binding is to D2/D3 receptor sites.

3.2 Ex Vivo Study

Coronal sections (20 μm) were cut from cervical, thoracic, lumbar and sacral areas of the spinal cord and cortical and striatal regions of the brain. Significant ^{18}F -fallypride binding was observed in regions of the rat spinal cord. Region of interest (ROIs) were drawn on different regions of the spinal cord (SDH, DH, PC, VH, and white matter (WM)) and for brain, ROI was drawn on striatum and cortex. Binding in the various regions was clearly evident with SDH and DH showing approximately 6% of the binding compared to that

observed in the striatum. The VH and PC were somewhat lower (approx. 3 to 4% of that found in the striatum). In the brain slice, striatum to cortex ratio was 39 while the SDH to WM was 3.60 for the cervical region.

The values for spinal cord binding as ratios versus white matter for the cervical, thoracic, lumbar, and sacral regions are listed in Table II. Binding appeared highest in the lumbar region followed by the thoracic, cervical and then the sacral region. For each region of the spinal cord, binding stayed the highest in the SDH followed by the DH, then the PC, and lastly the VH which is consistent with the *in vitro* studies. This level of ^{18}F -fallypride binding is comparable to the extrastriatal dopamine receptor levels found in regions of the brain.

3.3 MicroPET Studies

In vivo binding of the ^{18}F -fallypride and the ^{11}C -fallypride were evaluated in the PET scan in the striatum and the cerebellum of the brain and overall binding in the spinal cord. *In vivo* binding potentials are presented in Table III for the striatum (STR), superior and inferior colliculi (COL) and the spinal cord (SC). Binding potential of both ^{18}F -fallypride and ^{11}C -fallypride in the spinal cord is comparable to those in the extrastriatal regions. The binding activity curves for both ^{18}F - and ^{11}C -fallypride exhibited similar profiles. Binding was the highest in the striatum followed by decreasing binding as the CNS descends from the striatum to the spinal cord which is similar to the *in vitro* findings. As expected there was no binding found in the cerebellum. Binding in the spinal cord was relatively stable throughout the time period shown for ^{18}F -fallypride. There were some minor fluctuations shown in the ^{11}C -fallypride binding in the spinal cord, after reaching a peak around 30 min, the binding decreases slightly and remains at the same activity level from 35 to 55 min. Around 60 min the binding decreases again and remains consistent throughout the last 20 min of the experiment. Binding in the superior and inferior colliculi was comparable to binding in the spinal cord for both radiotracers which can be interpreted as the concentration of dopamine receptors being similar in the spinal cord and the colliculi. The *in vivo* BP_{ND} values relative to striatum were similar to those measured in the *ex vivo* scans.

3.4 Ex Vivo MicroPET Studies

Ex Vivo PET images in (a) the striatum, (b) coronal view and (c) sagittal view of ^{18}F -fallypride and the ^{11}C -fallypride binding in the brain and the spinal cord. The relative specific binding ratios with respect to cerebellum are shown in Table III; all values were scaled with respect to striatum, the region with highest density of D2/D3 receptors taken as 100% binding. Binding was similar in the lower and upper spinal cord. ^{18}F -Fallypride binding was the greatest in the striatum of the brain followed by a gradual decrease in the spinal cord, with binding nonetheless indicating the presence of D2/D3 receptors. Binding is similar to *in vitro* and *in vivo* findings with binding decreasing as the spinal cord descends.

3.5 Drug Effects

Drug challenges were evaluated in the spinal cord sections and results are shown in Figure-6. Dopamine at concentrations of 1 μM and 20 μM reduced 22% and 48% of ^{18}F -fallypride binding. Clozapine, which is known to bind to dopamine D2/D3 receptors at

similar concentration displaced 53% and 78% of ^{18}F -fallypride respectively. Haloperidol, a potent D2/D3 receptor antagonist displaced approx. 75% and 77% respectively at the same concentrations. The dopamine D1 receptor antagonist, SCH 23390 had little effect on the binding of ^{18}F -fallypride.

4. Discussion

Our in vitro findings show that dopamine D2/D3 receptors are present throughout the spinal cord and can be measured by using the PET imaging agent ^{18}F -fallypride. This is consistent with previous autoradiographic and immunoreactivity studies on the varying distribution of dopamine receptors throughout the spinal cord (Holstege et al., 1998). The D2/D3 receptors are more concentrated in the SDH and least in the VH and is similar to that previously observed autoradiographically. This concentration gradient between SDH to VH is retained throughout the length of the spinal cord, from the cervical to the sacral region. Little binding of ^{18}F -fallypride was seen in the white matter, which is known not to have any significant amount of dopamine receptors. Reversibility of binding of ^{18}F -fallypride was ascertained in the presence of sulpiride and is consistent with brain findings, thus suggesting that ^{18}F -fallypride is specifically bound to dopamine D2/D3 receptors.

Ex vivo study in the rat confirmed the findings seen in the in vitro studies. All regions of the spinal cord exhibited ^{18}F -fallypride retention and the levels of binding were in the same order as in the in vitro studies, SDH>DH>PC>VH. As expected, the striatum had the maximum binding (Fig-3). Rat cortical regions are known to have small levels of D2/D3 receptors (Mukherjee et al., 1999). Levels of ^{18}F -fallypride in the spinal cord were higher than in the cortex and were approximately 5% of that found in the striatum. These findings suggested that it may be possible to visualize spinal cord D2/D3 receptors in vivo using ^{18}F -fallypride PET.

Uptake of ^{18}F -fallypride in the rat brain was consistent with our previous findings as seen in Fig-4A (Constantinescu et al., 2011). Visualizing and establishing accurate region of interests for the spinal cord proved to be difficult using ^{18}F -fallypride because of bone uptake of ^{18}F -fluoride resulting from defluorination of ^{18}F -fallypride. The time-activity curve in Fig-4B shows close parallel to the levels of ^{18}F -fallypride in the colliculi within the brain, and distinctly higher than the reference region, cerebellum. Table-III shows approximately 9% of binding in the spinal cord compared to the striatum, which may be a slight overestimation compared to the ex vivo findings shown in Fig-3 due to ^{18}F -fluoride spillover effects in vivo. Additionally, it should be noted that the cerebellum was used as a reference region for the spinal cord since distinguishing white matter in the spinal cord in vivo is not possible due to the small size of the entire spinal column.

In order to avoid ^{18}F -fluoride uptake in the vertebral column resulting from ^{18}F -fallypride, ^{11}C -fallypride was considered for imaging the dopamine receptors in the spinal cord (Mukherjee et al., 2004). Imaging with ^{11}C -fallypride eliminated bone uptake of free ^{18}F -fluoride while maintaining the benefit of the high affinity of fallypride for visualizing extrastriatal dopamine D2/D3 receptors. On the other hand, this eliminated the use of the spinal column as a useful landmark for establishing the exact location of the

spinal cord. But sufficient uptake of ^{11}C -fallypride in the spinal cord was still visible as seen in Fig-4C. Approximately 6% of ^{11}C -fallypride was bound to the spinal cord compared to the striatum and is more consistent with the ex vivo results.

In order to ascertain that the ^{18}F -fallypride and ^{11}C -fallypride spinal cord binding seen in the in vivo PET studies (Fig-4) was bound to the spinal cord and not entirely to the vertebral column, ex vivo PET studies of the brain and the entire length of the spinal cord were performed after the in vivo PET study. The spinal cord showed considerable binding in the ex vivo PET scans with both ^{18}F -fallypride (Fig-5A, B) and ^{11}C -fallypride (Fig-5C, D). Binding was seen in the entire length of the spinal cord- however, the cervical and lumbar/lumbosacral regions of the spinal cord showed increased binding, consistent with our in vitro and ex vivo findings for ^{18}F -fallypride (Fig-2,3). This may be consistent with the greater amount of anatomical locations of the cervical and lumbar plexuses in the rat spinal cord. The relative amounts of ^{18}F -fallypride and ^{11}C -fallypride measured in the striatum are different (Table-III), since measurements of ^{11}C -fallypride are not at equilibrium.

Antagonists clozapine and haloperidol are well-known neuroleptic drugs and a significant amount of effort has gone into receptor occupancy studies in the brain (Mukherjee et al., 2001). Our in vitro findings with the spinal cord suggest that both of these drugs are able to compete with spinal cord-bound ^{18}F -fallypride. This may be of significance either from a therapeutic standpoint or be causing adverse effects due to neuroleptic treatment. As expected, dopamine an agonist also displaced ^{18}F -fallypride, although to a lesser extent than the antagonists. It may be postulated that pramipexole, a dopamine agonist, used for restless leg syndrome, may have an affect on the spinal cord dopamine receptors (Comella 2014).

In summation, significant amounts of dopamine D2/D3 receptors in the rat spinal cord can be visualized using in vivo PET. Challenges include issues of defluorination of fluorine-18 radiotracers that may confound accurate quantification of the receptors in the spinal cord. This may be overcome by the use of carbon-11 analogs. The size of the regions within the spinal cord may be an issue when measuring smaller sections of the entire spinal column— however, the length of the spinal cord offers the possibility that breaks in the spinal column may be measurable by comparing adjacent regions. Translation of these rodent model findings to human studies remains to be demonstrated.

Conclusions

Binding of ^{18}F -fallypride in rat spinal cord sections confirms dopamine D2/D3 receptor binding. Our results indicate that 5% of ^{18}F -fallypride binding was observed in the rat spinal cord compared to striatum suggesting presence of D2/D3 receptors in the spinal cord. Dopamine, clozapine and haloperidol reduce binding of ^{18}F -fallypride in the spinal cord. This binding pattern also shows possible involvement of the D2/D3 receptor in restless leg syndrome as it correlates well with lower extremity nerves. While viewing and evaluating the spinal cord in the ex vivo studies proved to be much simpler than the in vivo studies, strides should be made to eliminate bone absorption in order to have better in vivo evaluation techniques.

Acknowledgments

This research was supported by NIH Grants RC1 DK087352 (JM) and R21 DK092917 (JM). We like to thank Dr. Baogang Xue and Christopher Liang for technical support.

References

- Barriere G, Mellen N, Cazalets J-R. Neuromodulation of the locomotor network by dopamine in the isolated spinal cord of newborn rat. *Eur J Neurosci*. 2004; 19(5):1325–35. [PubMed: 15016090]
- Buchsbaum MS, Christian BT, Lehrer DS, Narayanan TK, Shi B, Mantil J, Kemether E, Oakes TR, Mukherjee J. D2/D3 Dopamine receptor binding with [¹⁸F]fallypride in thalamus and cortex of patients with schizophrenia. *Schizophrenia Research*. 2006; 85:232–244. [PubMed: 16713185]
- Cavallotti C, Frati A, Cavallotti D, Leali FMT. Dopaminergic receptors in rat dura mater: pharmacological characteristics. *Clin Exptl Pharm Physiol*. 2004; 31(3):190–4.
- Comella CL. Treatment of restless legs syndrome. *Neurotherapeutics*. 2014; 11:177–187. [PubMed: 24363103]
- Constantinescu CC, Coleman RA, Pan ML, Mukherjee J. Striatal and extrastriatal microPET imaging of D2/D3 dopamine receptors in rat brain with ¹⁸F-fallypride and ¹⁸F-desmethoxyfallypride. *Synapse*. 2011; 65:778–787. [PubMed: 21218455]
- Constantinescu CC, Mukherjee J. Performance evaluation of an Inveon PET preclinical scanner. *Phys Med Biol*. 2009; 54:2885–2899. [PubMed: 19384008]
- Fisher B, Li Q, Nacca A, Salem GJ, Song J, Yip J, et al. Treadmill exercise elevates striatal dopamine D2 receptor binding potential in patients with early Parkinson's disease. *Neuroreport*. 2013; 24(10):509–514. [PubMed: 23636255]
- Garcia A, Mirlobooki MR, Constantinescu C, Pan ML, Sevrioukov E, Milne N, Wang PH, Lakey JRT, Chandy KG, Mukherjee J. ¹⁸F-Fallypride PET imaging of pancreatic islets cells: In vitro and in vivo rodent studies. *J Nucl Med*. 2011; 52:1125–1132. [PubMed: 21680697]
- Garcia A, Venugopal A, Pan M-L, Mukherjee J. Imaging pancreas in healthy and diabetic rodent model using ¹⁸F-fallypride PET/CT. *Diabetes Tech & Ther Dev*. 2014; 16 in press.
- Holstege JC, van Dijken H, Buijs RM, Goedknecht H, Gosens' and T, Bongers CMH. Distribution of dopamine immunoreactivity in the rat, cat, and monkey spinal cord. *J Comp Neurol*. 1998; 376(4):631–652. [PubMed: 8978475]
- Ishizuka O, Mizusawa H, Nishizawa O. Roles of dopaminergic receptors in bladder and erectile function at the spinal level. *Asian J Androl*. 2002; 4(4):287–290. [PubMed: 12508130]
- Keeler B, Baran C, Brewer K, Clemens K. Increased excitability of spinal pain reflexes and altered frequency-dependent modulation in the dopamine D3-receptor knockout mouse. *Exp Neurol*. 2012; 2:273–283. [PubMed: 22995602]
- Lahlou S. Blunted pressor responsiveness to intravenous quinpirole in conscious, chronic spinal cord-transected rats: peripheral vs. spinal mechanisms. *Eur J Pharmacol*. 2000; 408:51–62. [PubMed: 11070183]
- Lahlou S. Enhanced hypotensive response to intravenous apomorphine in chronic spinalized, conscious rats: role of dopamine D1 and D2 receptors. *Neurosci Lett*. 2003; 349:115–119. [PubMed: 12946566]
- Levant B, McCarson KE. D3 dopamine receptors in rat spinal cord: implications for sensory and motor function. *Neurosci Lett*. 2001; 303:9–12. [PubMed: 11297811]
- Liz ZS, Schmauss C, Cuenca A, Ratcliffe E, Gershon MD. Physiological modulation of intestinal motility by enteric dopaminergic neurons and the D2 receptor: analysis of dopamine receptor expression, location, development, and function in wild-type and knockout mice. *J Neurosci*. 2006; 26(10):2798–2807. [PubMed: 16525059]
- Logan J, Fowler JS, Volkow ND, Wang GJ, Ding YS, Alexoff DL. Distribution volume ratios without blood sampling from graphical analysis of PET data. *J Cereb Blood Flow Metab*. 1996; 16:834–840. [PubMed: 8784228]

- Mukherjee J, Yang ZY, Brown T, Lew R, Wernick M, Ouyang X, et al. Preliminary assessment of extrastriatal dopamine D-2 receptor binding in the rodent and nonhuman primate brains using the high affinity radioligand, ^{18}F -fallypride. *Nucl Med Biol.* 1999; 26:519–527. [PubMed: 10473190]
- Mukherjee J, Christian BT, Dunigan KA, Shi B, Narayanan TK, Satter M, et al. Brain imaging of ^{18}F -fallypride in normal volunteers: blood analysis, distribution, test-retest studies, and preliminary assessment of sensitivity to aging effects on dopamine D-2/D-3 receptors. *Synapse.* 2002; 46:170–188. [PubMed: 12325044]
- Mukherjee J, Christian BT, Narayanan TK, Shi B, Mantil J. Evaluation of dopamine D-2 receptor occupancy in vivo by clozapine, risperidone and haloperidol in rodents and non-human primates using ^{18}F -fallypride. *Neuropsychopharmacology.* 2001; 25:476–488. [PubMed: 11557161]
- Mukherjee J, Shi B, Christian BT, Chattopadhyay S, Narayanan TK. ^{11}C -Fallypride: radiosynthesis and preliminary evaluation of a novel dopamine D2/D3 receptor PET radiotracer in non-human primate brain. *Bioorg Med Chem.* 2004; 12:95–102. [PubMed: 14697774]
- Pandey SK, Venugopal A, Kant R, Coleman RA, Mukherjee J. ^{124}I -Epidepride: A high affinity and selective PET radiotracer with potential for extended imaging of dopamine D2/D3 receptors. *Nucl Med Biol.* 2014; 41:426–431. [PubMed: 24602412]
- Schweinhardt P, Fransson P, Olson L, Spenger C, Andersson JL. A template for spatial normalisation of MR images of the rat brain. *J Neurosci Methods.* 2003; 129:105–113. [PubMed: 14511814]
- van Dijken H, Dijk J, Voom P, Holstege JC. Localization of dopamine D2 receptor in rat spinal cord identified with immunocytochemistry and in situ hybridization. *Eur J Neurosci.* 1996; 8:621–628. [PubMed: 8963454]

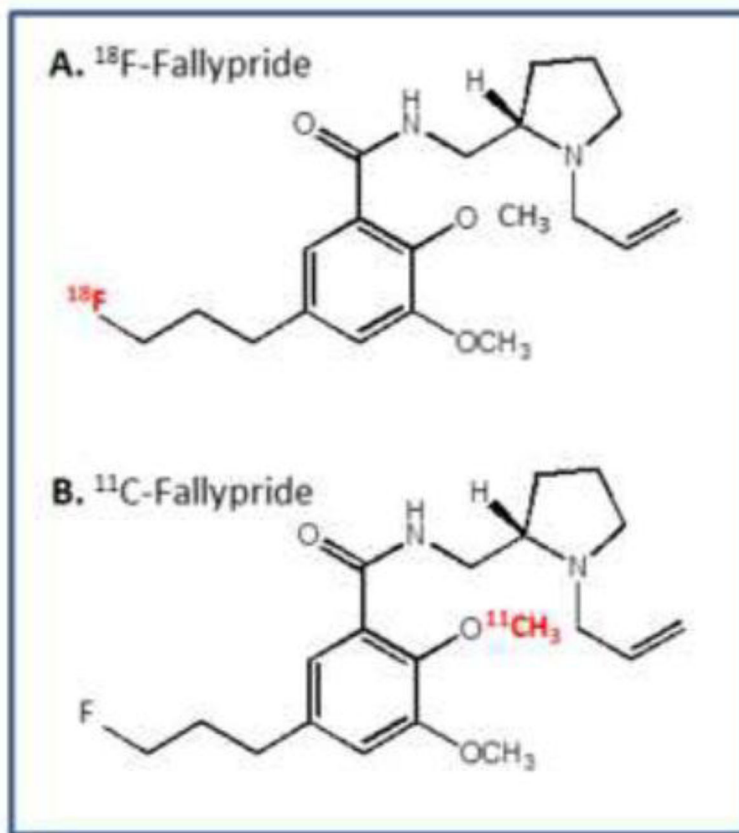


Figure 1. Chemical Structures of the PET radiotracers
(A). ¹⁸F-fallypride (B). ¹¹C-fallypride.

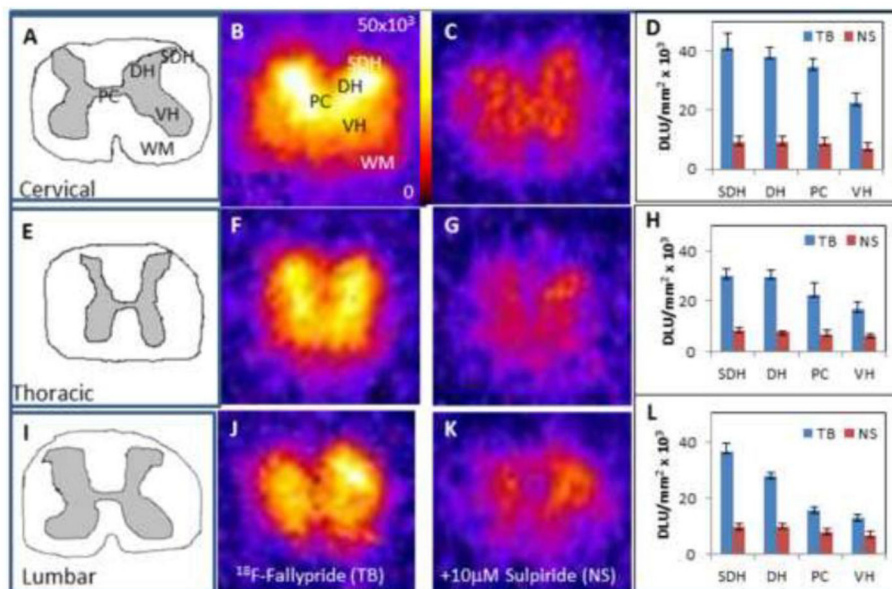


Figure 2. In Vitro Studies on the Rat Spinal Cord with ¹⁸F-Fallypride

20 μm slices of the cervical, thoracic and lumbar rat spinal cord sections from rats injected with ¹⁸F-fallypride (n=6). Figures A, E, I are drawings of the cervical, thoracic, lumbar sections respectively, which illustrate the gray matter and white matter of each section. Figures B, F, and J show ¹⁸F-fallypride binding in vitro in corresponding sections. Figures C, G, K show nonspecific binding with 10 μM of sulpiride in corresponding adjacent sections. Figures D, H, L show total binding and nonspecific binding in the various spinal cord regions (SDH: Superficial dorsal horn; DH: Dorsal horn VH: Ventral horn; PC: Pars centralis; WM: White matter).

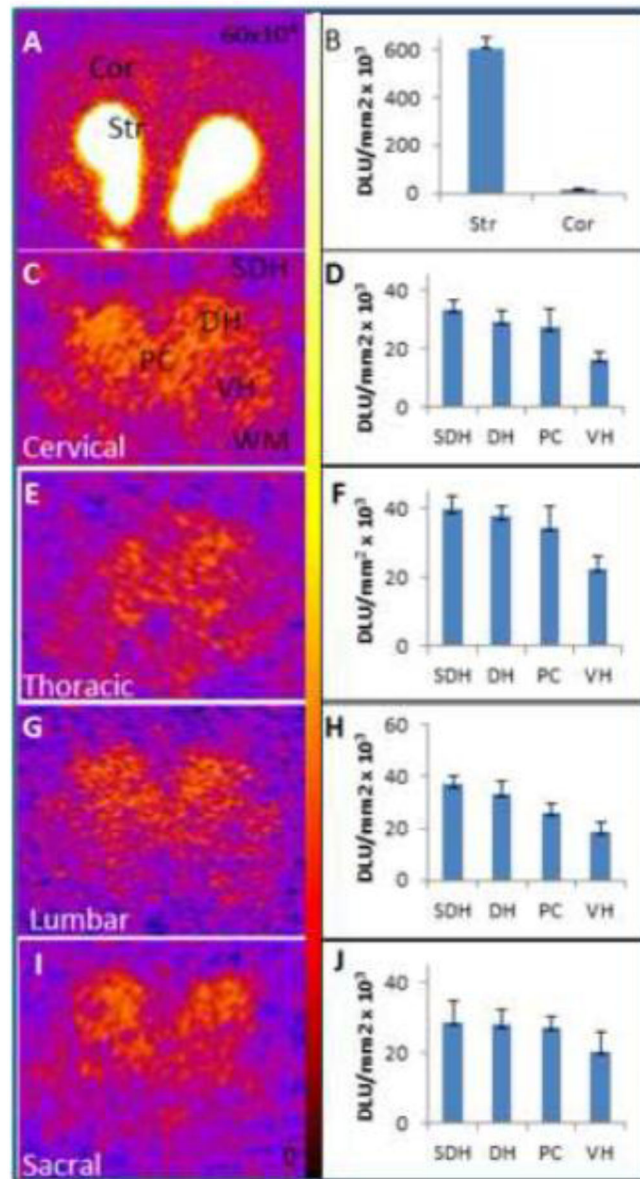


Figure 3. Rat Ex Vivo Studies with ^{18}F -Fallypride of the Brain and Spinal Cord Regions
 Autoradiographic studies of ex vivo binding of ^{18}F -fallypride in rat brain coronal sections and spinal cord sections 3 hrs after intravenous administration of 37 MBq ^{18}F -fallypride (n=3). (A&B) Ex vivo binding of ^{18}F -fallypride in the brain comparing the cortical and striatum regions and the corresponding plot for ^{18}F -fallypride binding. Spinal cord sections and corresponding plots showing ^{18}F -fallypride binding (C–J): (C and D) cervical, (E and F) thoracic, (G and H) lumbar, and (I and J) sacral.

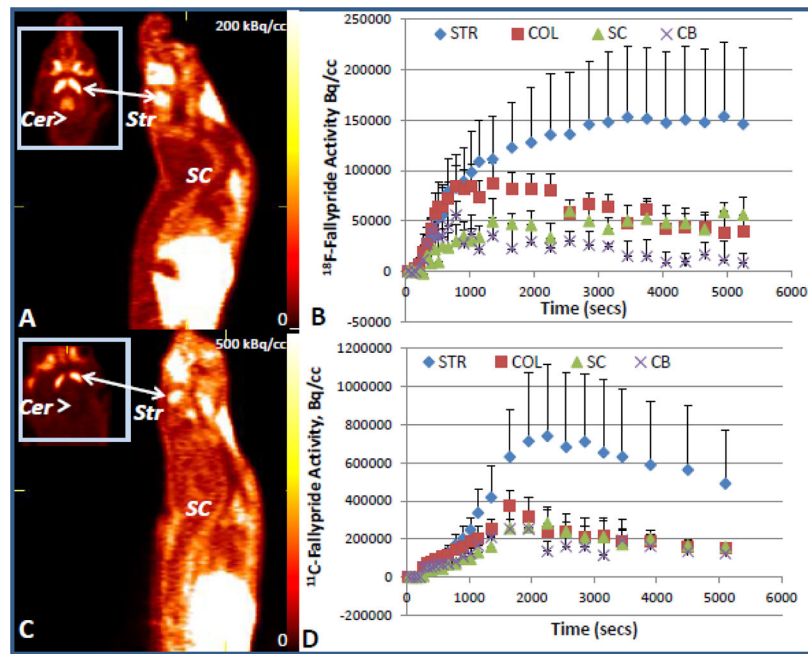


Figure 4. Rat In Vivo PET studies with ^{18}F -Fallypride and ^{11}C -Fallypride
 PET images whole body sagittal and head horizontal sections of a rat brain and spinal cord showing ^{18}F -fallypride (panel A) and ^{11}C -fallypride (panel C) after iv injection (n=2). ^{18}F -Fallypride (B) and ^{11}C -fallypride (D) time activity curves are shown for striatum (Str), spinal cord (SC), colliculi (Col) and cerebellum (Cer).

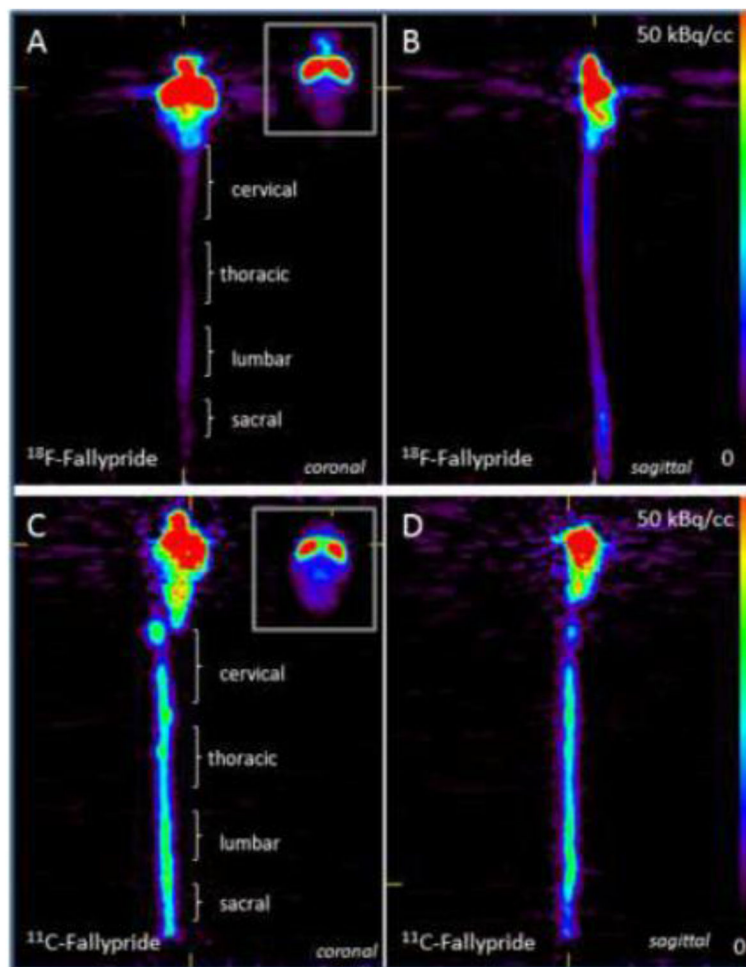


Figure 5. Rat Ex Vivo PET studies with ^{18}F -Fallypride and ^{11}C -Fallypride of the brain and spinal cord

Ex vivo PET image of a rat sacrificed after initial PET scan (Figure 4) and the brain and spinal cord excised for ex vivo PET imaging ($n=2$). Ex vivo ^{18}F -fallypride (A and B) and ^{11}C -fallypride (C and D) images of brain and spinal cord in the coronal (A and C) and sagittal view (B and D) are shown. Binding of ^{18}F -fallypride and ^{11}C -fallypride is evident in the brain (striatum, at the top right corner of A and C) and in the various regions of the spinal cord as shown in C (cervical, thoracic, lumbar, sacral).

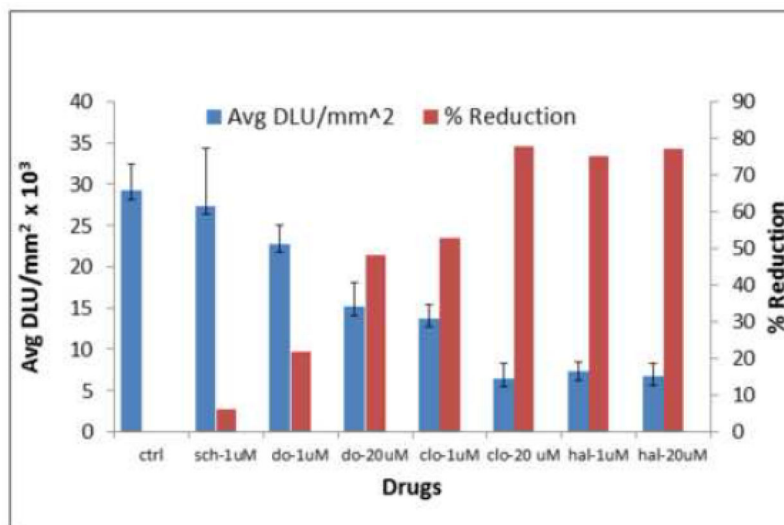


Figure 6. Drug Effects using two different agonists

In vitro binding of ¹⁸F-fallypride in the spinal cord sections in control (ctrl) and effect of 1 μ M and 20 μ M of dopamine (do), clozapine (clo) and haloperidol (hal) 1 μ M and 20 μ M each, and with 1 μ M of SCH 23390 (sch). The graph shows individual drug effects with different concentrations, as the concentration increased there was a reduction in the D2/D3 receptor binding in the spinal cord.

Table IIn Vitro Studies with ^{18}F -fallypride on Spinal Cord Sections

Spinal Cord Sections ¹	SDH/WM	DH/WM	PC/WM	VH/WM
Cervical	4.55	4.22	3.80	2.47
Thoracic	4.14	4.12	3.13	2.31
Lumbar	4.78	3.62	2.04	1.69
% Reduction ²				
Cervical	-75.1%	-76.5%	-74.3%	-67.8%
Thoracic	-72%	-74.3%	-68.7%	-61.2%
Lumbar	-73.4%	-64.3%	-49.4%	-48.3%

¹ Spinal cord sections shown in Figure-2 (Total Binding, TB);

² Reduction in binding by 10 μM sulpiride shown in Figure-2 (Nonspecific binding, NS);

SDH = superficial dorsal horn; DH = dorsal horn; PC = pars centralis; VH = ventral horn; WM = white matter (n=6).

Table II

Ex Vivo Autoradiography with ^{18}F -fallypride on spinal cord and brain

Section	Brain (striatum)	Cervical	Thoracic	Lumbar	Sacral
Str/Cor	39	--	--	--	--
SDH/WM	--	3.60	3.69	3.90	2.40
DH/WM	--	3.15	3.50	3.55	2.20
PC/WM	--	2.94	3.20	2.72	1.70
VH/WM	--	1.75	2.09	1.98	1.30

SDH = superficial dorsal horn; DH = dorsal horn; PC = pars centralis; VH = ventral horn; WM = white matter; Str = striatum; Cor = cortex (n=3).

Table III

In vivo and Ex vivo PET measures

Region	¹⁸ F-Fallypride	¹¹ C-Fallypride
<i>¹In Vivo Binding, BP_{ND}</i>		
Striatum	17.75/100%	9.28/100%
Colliculi	1.18/6.65%	0.47/5.06%
Spinal Cord	1.57/8.85%	0.58/6.25%
<i>²Ex Vivo Binding, %</i>		
Striatum	100%	100%
Colliculi	4.20%	10.6%
Spinal Cord	1.41%	6.17%

¹ Comparison of binding potentials of ¹⁸F-Fallypride and ¹¹C-Fallypride in vivo using PET (shown in Fig-4; n=2).

² Ex vivo binding of ¹⁸F-Fallypride and ¹¹C-Fallypride in the spinal cord was compared to the striatum in the brain and the colliculi using ex vivo PET (shown in Fig-5).