

Lawrence Berkeley National Laboratory

Recent Work

Title

The Building Design Advisor

Permalink

<https://escholarship.org/uc/item/2vr0n53b>

Author

Selkowitz, S.E.

Publication Date

1996-03-01

The Building Design Advisor

*K. Papamichael, J. LaPorta, H. Chauvet, D. Collins, T. Trzcinski, J. Thorpe, and S. Selkowitz
Building Technologies Program
Energy and Environment Division
Ernest Orlando Lawrence Berkeley National Laboratory
Berkeley, California 94720*

Abstract

The Building Design Advisor (BDA) is a software environment that supports the integrated use of multiple analysis and visualization tools throughout the building design process, from the initial, schematic design phases to the detailed specification of building components and systems. Based on a comprehensive design theory, the BDA uses an object-oriented representation of the building and its context, and acts as a data manager and process controller to allow building designers to benefit from the capabilities of multiple tools.

The BDA provides a graphical user interface that consists of two main elements: the Building Browser and the Decision Desktop. The Browser allows building designers to quickly navigate through the multitude of descriptive and performance parameters addressed by the analysis and visualization tools linked to the BDA. Through the Browser the user can edit the values of input parameters and select any number of input and/or output parameters for display in the Decision Desktop. The Desktop allows building designers to compare multiple design alternatives with respect to any number of parameters addressed by the tools linked to the BDA.

The BDA is implemented as a Windows™-based application for personal computers. Its initial version is linked to a Schematic Graphic Editor (SGE), which allows designers to quickly and easily specify the geometric characteristics of building components and systems. For every object created in the SGE, the BDA supplies “smart” default values from a Prototypical Values Database (PVD) for all non-geometric parameters required as input to the analysis and visualization tools linked to the BDA. In addition to the SGE and the PVD, the initial version of the BDA is linked to a daylight analysis tool, an energy analysis tool, and a multimedia Case Studies Database (CSD). The next version of the BDA will be linked to additional tools, such as a photo-accurate rendering program and a cost analysis program. Future versions will address the whole building life-cycle and will be linked to construction, commissioning and building monitoring tools.

Introduction

The continuously decreasing cost of computing power has resulted in very powerful, yet affordable computer systems. Several building analysis and visualization programs that were originally developed and maintained on mainframe systems are now available on workstation and personal computers. Such programs include the DOE-2 building energy simulation program [Birdsall, et al. 1990], the SUPERLITE daylighting program [Modest 1982], the RADIANCE lighting and rendering program [Ward 1990], and the COMIS air flow and indoor air quality program [Feustel 1992]. Referred to as “simulation tools,” these programs use sophisticated

algorithms that model the physical behavior of buildings under varying environmental conditions. When used during the building design process to predict the performance of various design alternatives with respect to considerations such as comfort, energy, cost, esthetics, etc., these programs can greatly contribute toward more informed and wiser decisions. This, in turn, should translate into the design and construction of better buildings.

A major drawback of existing building simulation tools is that they were not designed for use by building designers. Rather, they were designed for use by research scientists, such as those who originally developed them. As a result, they lack an easy and friendly mechanism for entering input data and reviewing output. Their use typically requires a steep and prolonged learning curve. Even after such a significant investment, each subsequent use of such simulation programs requires time-consuming preparation of “input files,” (i.e., descriptions of buildings and their surroundings in terms of numbers and character strings that follow a specific syntax). Moreover, the produced “output files” are typically in the form of alphanumeric tables which are difficult to review and interpret. As a result, despite their relative usefulness and widespread availability, these simulation tools are rarely used by the building design community.

The Building Design Advisor (BDA) is a computer program designed to make the use of simulation tools quick and easy. It allows the use of sophisticated simulation tools from the early, schematic phases of building design to the detailed specification of building components and systems. The BDA is designed to allow for the transparent, integrated, and concurrent use of multiple simulation tools and databases, through a single graphical user-interface that supports multi-criterion decision-making.

Background

The BDA research and development efforts were initiated in the mid-1980s. The objective at that time was to explore how computers could be used to promote the consideration of energy-efficient strategies (e.g., daylighting) and technologies (e.g., heat pumps) through the building design process. Soon enough, it became apparent that *general* statements about the performance of strategies and technologies (e.g., *on the average*, daylighting can save 50% of electric energy) were not enough for decision-making in *specific* design projects. Building designers need to know what the specific energy performance of strategies and technologies is with respect to their particular design context. Moreover, they need to know the effects on non-energy performance as well, such as comfort, cost and esthetics. Several approaches to this problem were considered at that time, many of which focused on the use of artificial intelligence techniques to automate the use of multiple simulation tools and address the decision-making process. These efforts, combined with ongoing research in design theories and methods, resulted in the formulation of a comprehensive design theory which clearly distinguishes between tasks that *can* and *cannot* be delegated to computers [Papamichael and Protzen 1993].

After various incarnations of a demonstration prototype, the actual BDA development efforts were initiated in July 1994. These efforts focused on the design and development of

- the BDA core algorithms for the overall control of processes and data management,
- an integrated data model for the representation of the building and its context,
- an application programming interface for the development of links to external tools, and
- a graphical user interface for easy navigation through data and processes.

The BDA core program

Although the BDA appears to the user as a single application, it is in fact several applications which work together to form an integrated environment where design alternatives can be developed, compared, and analyzed in different domain areas (e.g., daylighting, energy, cost, etc.). Each application within the BDA environment provides a specific service. Some applications may remain active through an entire user session, while others are invoked periodically to perform specific tasks, after which they are terminated. This approach provides a flexible software architecture in which additional applications can be developed when greater functionality is required. By dividing functionality into small applications, we avoid delivering a single large application which must be loaded in its entirety regardless of the needs of the user. This program structure also provides a means for third-party developers to extend the BDA functionality without modifications to the core program.

The core program is the main BDA module from which other applications are launched. It remains active through an entire user session and provides the required data management and process control through a graphical user-interface (**Figure 1**).

The core BDA program maintains a rich object-oriented model of the entire building and its context. This description includes both geometric and non-geometric descriptions of the building, its components and systems, as well as performance measures addressed by the attached analysis tools. Through its graphical user-interface, the core program allows users to

- easily navigate through the object-oriented model of the building,
- request computations by the analysis tools linked to BDA,
- perform queries to the attached databases, and
- review results from computations and data queries in a variety of graphical displays.

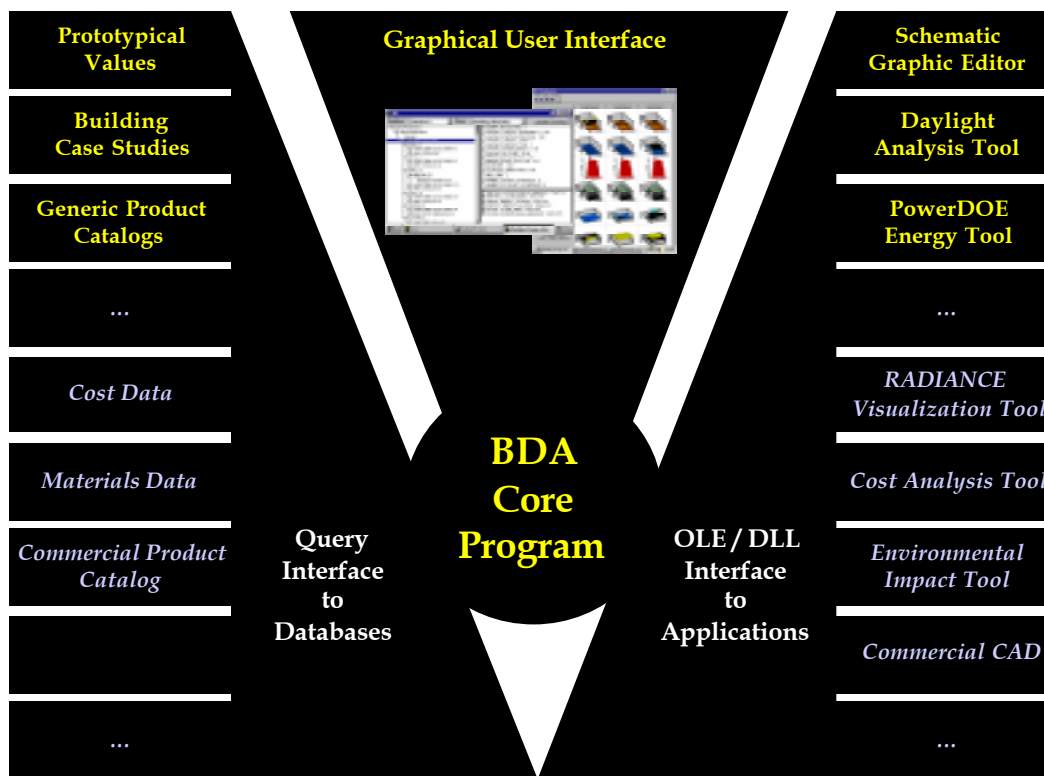


Figure 1. A schematic diagram showing the Building Design Advisor software environment.

Based on user requests, the core program controls the preparation and submission of the input to the appropriate tools and databases, and the merging of their output into the integrated data model for potential review and subsequent use by other tools.

The integrated data model

Depending on the performance aspect being addressed (e.g., energy, esthetics, cost, etc.) simulation tools use different building modeling representations. A thermal simulation program, such as DOE-2, uses a building description in terms of thermal barriers with properties such as U-value, solar transmittance, etc., required for heat transfer computations. A lighting and rendering simulation program, such as RADIANCE, uses a building description in terms of geometric solids, such as cones, spheres, etc., with properties such as texture, visible reflectance, etc., required for illuminance and luminance computations. Even if simulation programs such as DOE-2 and RADIANCE were easy to use, building designers would have to describe each alternative design multiple times, in terms of thermal barriers, geometric solids, etc. To address this problem, the BDA uses a single, object-oriented building representation, which allows building designers to describe the building in terms of real world objects such as spaces, walls, windows, etc. The BDA then automatically “translates” these objects into thermal barriers, geometric solids, etc., as required by the simulation tools linked to the BDA, thus relieving building designers from the modeling complexity associated with each simulation tool.

The BDA uses a generic object-oriented representation of the building. It is generic in that it is not focused towards any specific domain or application, but instead models the actual physical components of the building. An object-oriented representation is based on the notion of *objects* (e.g., walls) that have *parameters* (e.g., U-value, visible reflectance), *relations* (e.g., define) to other *objects* (e.g., spaces), and *methods* (e.g., display) which describe their behavior. The advantage of an object-oriented approach is that each object has not only a description of itself, but also an explicit behavior built into it which enables it to manage its own actions. In BDA, for example, a Wall object contains a Construction object (which defines its materials), and two Surface objects (one for each side) describing the characteristics of the final finish (**Figure 2**). If the room on one side of an interior wall is deleted, the Wall object can automatically change its Construction and exterior Surface objects to match the requirements for an exterior wall. This kind of interaction is possible because each object in the BDA system has knowledge about itself and its actions.

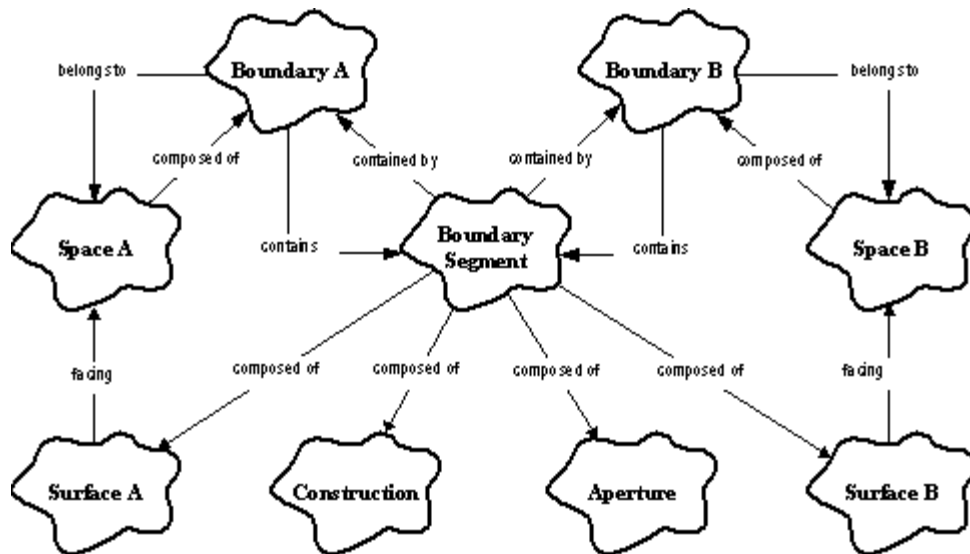


Figure 2. A small window into the object-oriented building model used in the BDA, demonstrating the network resulting from the relations among objects..

The object-oriented representation used in the BDA is designed to allow for flexible creation of objects, so that it can be extended to address the modeling needs of any simulation tool to be linked in the future. It is based on a so-called “meta-schema,” which considers *relations* and *attributes*, as well as the attribute *values*, as objects themselves. This meta-schema allows for easy modifications of the building representation depending on the particular simulation tools to be linked or be available during run-time. By modeling each attribute as an object, the attribute becomes more than a simple value holder. As an object, the attribute knows its name, its units, its display options (e.g., as a numeric value, as a 2-D graph, etc.) and its dependencies on other objects, (e.g., simulation programs that may use it as input or output). All of this information is

used to facilitate the effective communication between the BDA and the various simulation and visualization tools linked to it, through the application programming interface.

The Application Programming Interface (API)

The BDA itself does not perform any simulations nor does it provide any means to initiate a building description. It merely acts as a data manager and process controller for multiple programs, such as graphic and data editors, simulation tools, databases, etc. Since the data required by each tool vary not only in content, but also in format, a “driver” is developed for each tool which maps the generic representation used by the BDA to the specific representation used by that tool. This driver resolves any differences in format, units, and naming conventions between these representations.

The BDA uses two main methods to communicate with other applications: Object Linking and Embedding (OLE) and Dynamic Link Libraries (DLLs). The OLE method is used to communicate with applications that need to exchange data with BDA on a continuous mode, such as graphic and data editors. This is the mechanism by which BDA communicates with data editors, such as the Schematic Graphic Editor (described later in this paper). The DLL approach is used to communicate with applications that require single passes of massive amounts of data (e.g., simulation tools that require a whole building or space description and return values for multiple performance parameters).

The BDA may also access multiple databases, such as the Prototypical Values Database and the Case Studies Database (described later in this paper), as well as third party databases of building components and systems. Database access is achieved through the use of query languages. All data access and process control are handled through a single generic graphical user-interface. If individual applications provide their own user-interfaces (such as the Schematic Graphic Editor), the BDA supports their concurrent use through its application programming interface.

The Graphical User Interface

The Graphical User Interface (GUI) of the BDA has been designed to address the input and output needs of any simulation tool in a generic way that is independent of display resolution. The main GUI design objectives were to allow building designers to

- compare many alternative building designs with respect to many descriptive and performance parameters,
- review and edit all input parameters values in a consistent and orderly fashion, and
- select input and output parameters for review and comparison through multiple display options.

These objectives were met by the creation of two main BDA GUI elements, the *Decision Desktop* and the *Building Browser*.

The Decision Desktop

Decision-making among alternative design options requires simultaneous side-by-side comparison with respect to the various design considerations, which may cover any number of descriptive and performance building parameters. The Decision Desktop (or simply Desktop) is a re-sizable spreadsheet-like user interface element whose rows may house any of the input and output parameter addressed by the simulation tools linked to BDA, and whose columns correspond to the alternative design solutions under consideration by the user (Figure 3).

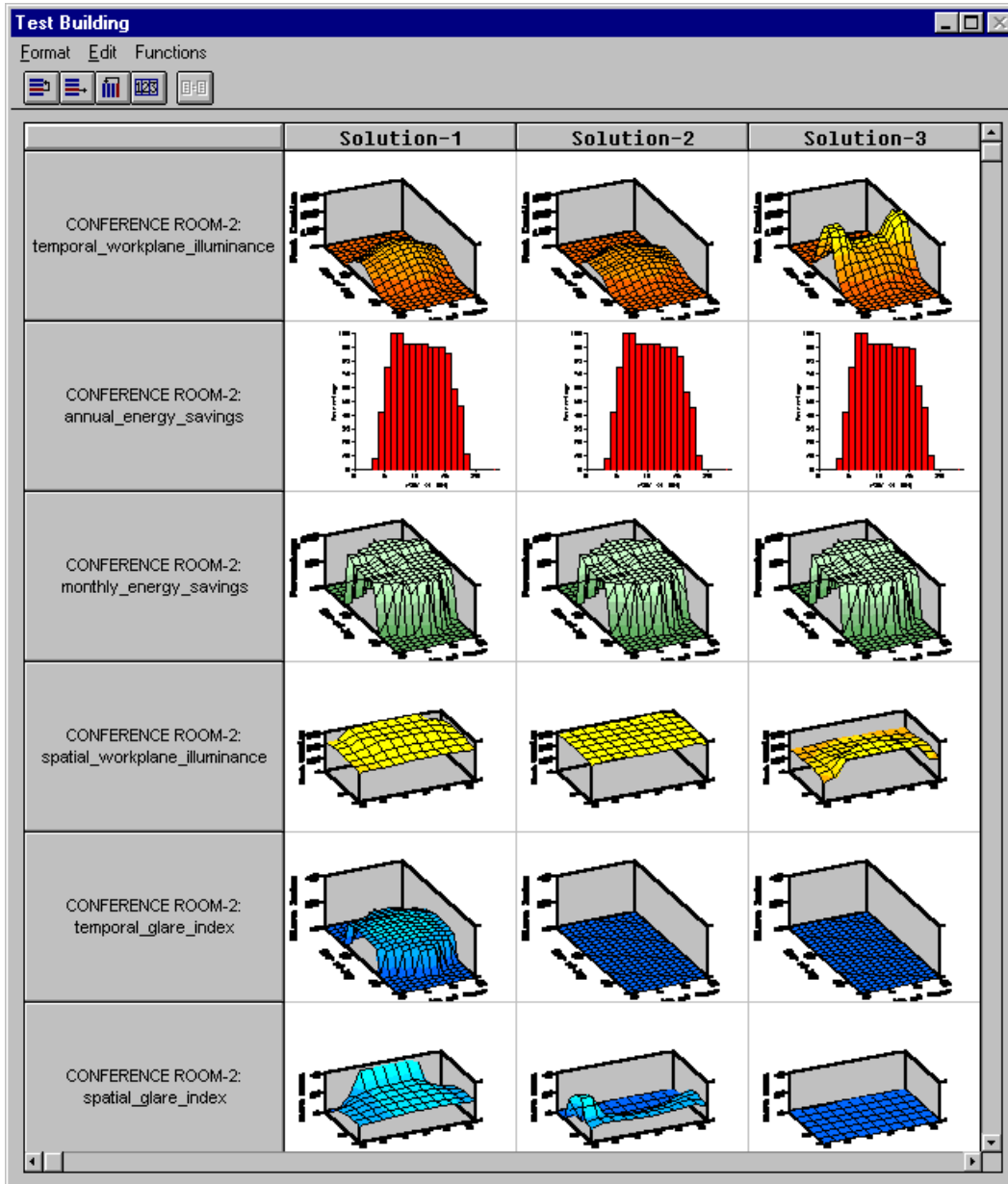


Figure 3. The Decision Desktop allows the user to compare multiple alternative designs with respect to any number of input and output parameters addressed by the simulation tools linked to the BDA.

The values of the input and output parameters are displayed either numerically or graphically within the spreadsheet cells. The supported value types range from single numbers to one- and two-dimensional arrays, images, sounds and videos. Any number of cells can be expanded for view in their own individual windows (**Figure 4**). Based on their type, values can be displayed in several different ways (e.g., 3-D graphs, contour plots, etc.), all of which are customizable by the user. The customization of display parameters can be set for any individual value (cell) or for the values in every solution (entire row).

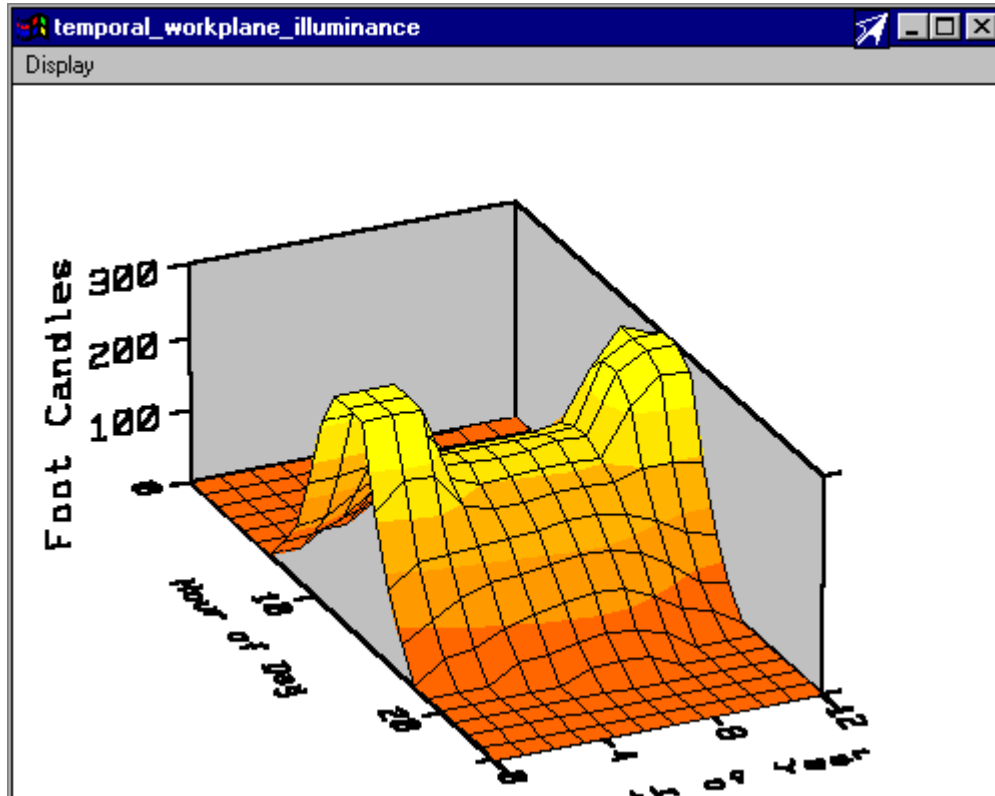


Figure 4. Each individual data cell can be expanded for view into its own window, through which the user can modify the display options, such as view angle, caption titles, etc.

The Desktop offers additional functionality with respect to controlling the size and sequence of its rows and columns. The user may change the size of the cells at any point. Parameters (rows) and solutions (columns) can be moved to any arbitrary location within the Desktop. Moreover, the sequence of solutions can be sorted with respect to the values of any of the displayed parameters (rows) in either ascending or descending order. If the sorting criterion is an array or matrix value, then the average value is used in the sorting process.

The Building Browser

The Building Browser (or simply Browser) is a re-sizable GUI element which allows BDA users to navigate through the building representation and view the objects and parameters, along with their values, through three main window areas (**Figure 5**).

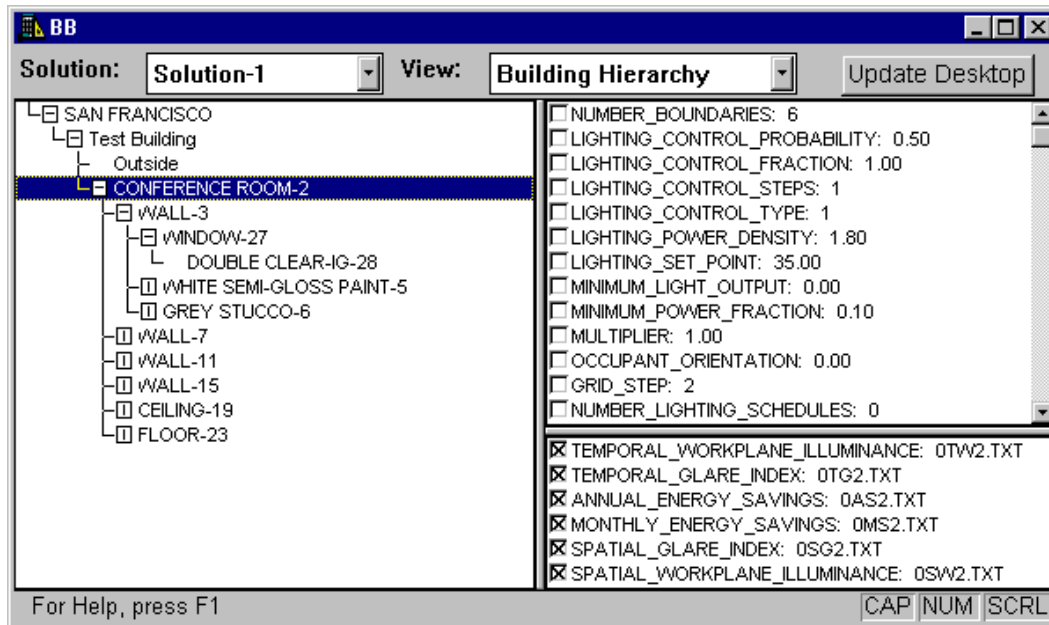


Figure 5. The Building Browser allows the user to quickly navigate through the object-based representation of the building and its context, and select any number of input and output parameters for display in the Decision Desktop.

The left window area essentially displays objects in an hierarchical manner. Since some building objects may be of more interest than others to a particular user, the Browser can be customized so that certain levels of the building representation are hidden. A user interested in windows, for example, can easily define a “view” that displays all the windows within a building or a zone, bypassing the space and wall objects. When an object is selected by the user (i.e., by clicking on it), its parameters that serve as input to the simulation tools linked to BDA are displayed in the upper right window area of the Browser, along with their values. The object parameters that are provided as output from the simulation tools are displayed in the lower right window area of the Browser.

BDA maintains an extendible library of alternative options for every building object. Double-clicking on a building object in the left window area of the Browser opens the *Object Information* dialog box, through which the user can alter the value of the object by selecting an alternative from the corresponding library (**Figure 6**). Double-clicking on a parameter in the upper or lower window area of the Browser opens the *Parameter Information* dialog box, through which the user can get information about the parameter and alter its value (**Figure 7**).

In addition to viewing objects and parameters and modifying their values, the Browser also serves as the mechanism for selecting the parameters (input and/or output) to be displayed in the Desktop. Any number of input and output parameters can be selected by the user simply by clicking on the check-box to the left of them (**Figure 5**). Clicking on the “Update” button creates a new row in the Desktop for each of the checked parameters.

Once one or more performance parameters have been selected for viewing in the Desktop, the user can request the computation and display of the values for all checked parameters by clicking on the “Calculate” button found in the main BDA window. BDA automatically prepares and submits the input to all simulation tools required for these computations, which in turn return their results to BDA for display in the Desktop.

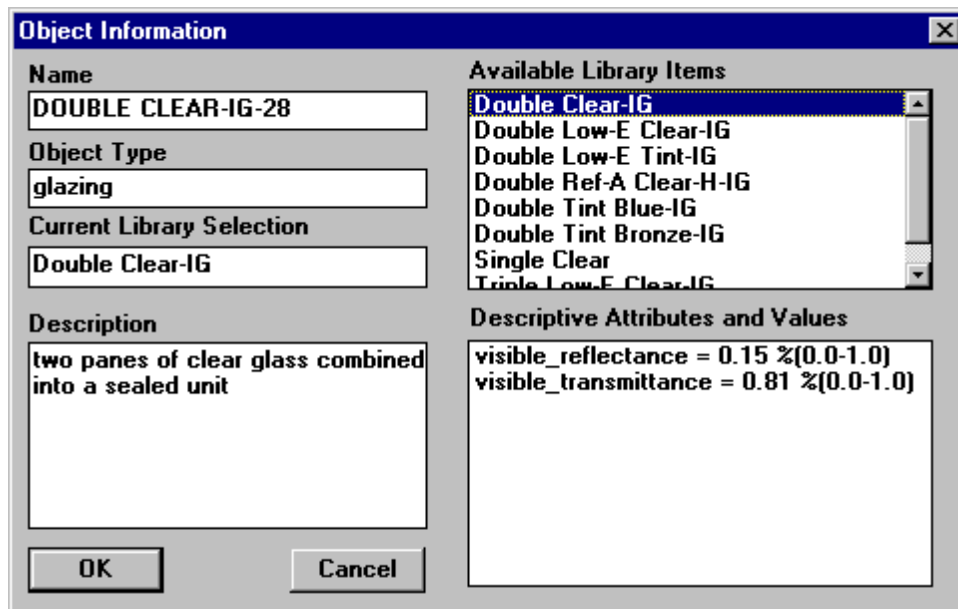
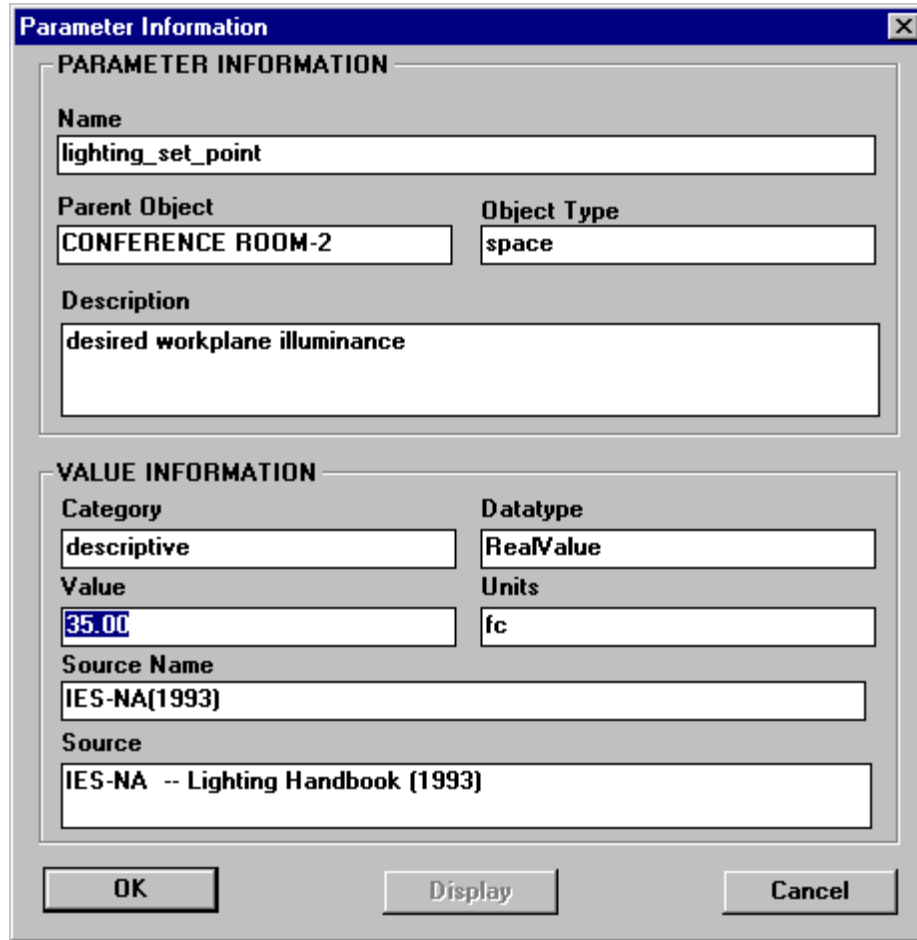


Figure 6. The object information dialog box contains information about the type of a particular object and allows the user to change its value by providing a list of all alternative library entries known to BDA.

The Schematic Graphic Editor

The Schematic Graphic Editor (SGE) is a stand-alone, CAD-like application that is provided along with the main BDA application. As explained earlier in this paper, the SGE is a separate application that can be replaced or supplemented at any point with any CAD system that uses an object-oriented representation of building components and systems. Traditional CAD programs offer a tools palette that allows users to draw geometric shapes, such as lines, rectangle, circles, etc. Although the end result may appear the same, SGE’s palette offers tools to draw building

objects, such as spaces, windows, etc. The SGE supports multiple alternative designs solutions and displays each one in its own window (**Figure 8**).



The image shows a 'Parameter Information' dialog box with a blue title bar and a close button. It is divided into two main sections: 'PARAMETER INFORMATION' and 'VALUE INFORMATION'. The 'PARAMETER INFORMATION' section contains fields for 'Name' (lighting_set_point), 'Parent Object' (CONFERENCE ROOM-2), 'Object Type' (space), and 'Description' (desired workplane illuminance). The 'VALUE INFORMATION' section contains fields for 'Category' (descriptive), 'Datatype' (RealValue), 'Value' (35.00), 'Units' (fc), 'Source Name' (IES-NA(1993)), and 'Source' (IES-NA -- Lighting Handbook (1993)). At the bottom, there are three buttons: 'OK', 'Display', and 'Cancel'.

PARAMETER INFORMATION	
Name	lighting_set_point
Parent Object	CONFERENCE ROOM-2
Object Type	space
Description	desired workplane illuminance

VALUE INFORMATION	
Category	descriptive
Datatype	RealValue
Value	35.00
Units	fc
Source Name	IES-NA(1993)
Source	IES-NA -- Lighting Handbook (1993)

Figure 7. The parameter information dialog box provides information about a single parameter and allows the user to modify its value.

As the user creates building objects in the SGE, BDA continuously receives information through OLE links and creates the required building objects with the specified geometry. Moreover, BDA selects “smart” default values from a Prototypical Values Database (described later in this paper) to prepare a complete input for the simulation tools that are linked to BDA. When, for example, the user draws a space in SGE, BDA automatically generates the wall, ceiling and floor objects along with default values for all required parameters. These default values can, of course, be changed by the user at any time through the Building Browser.

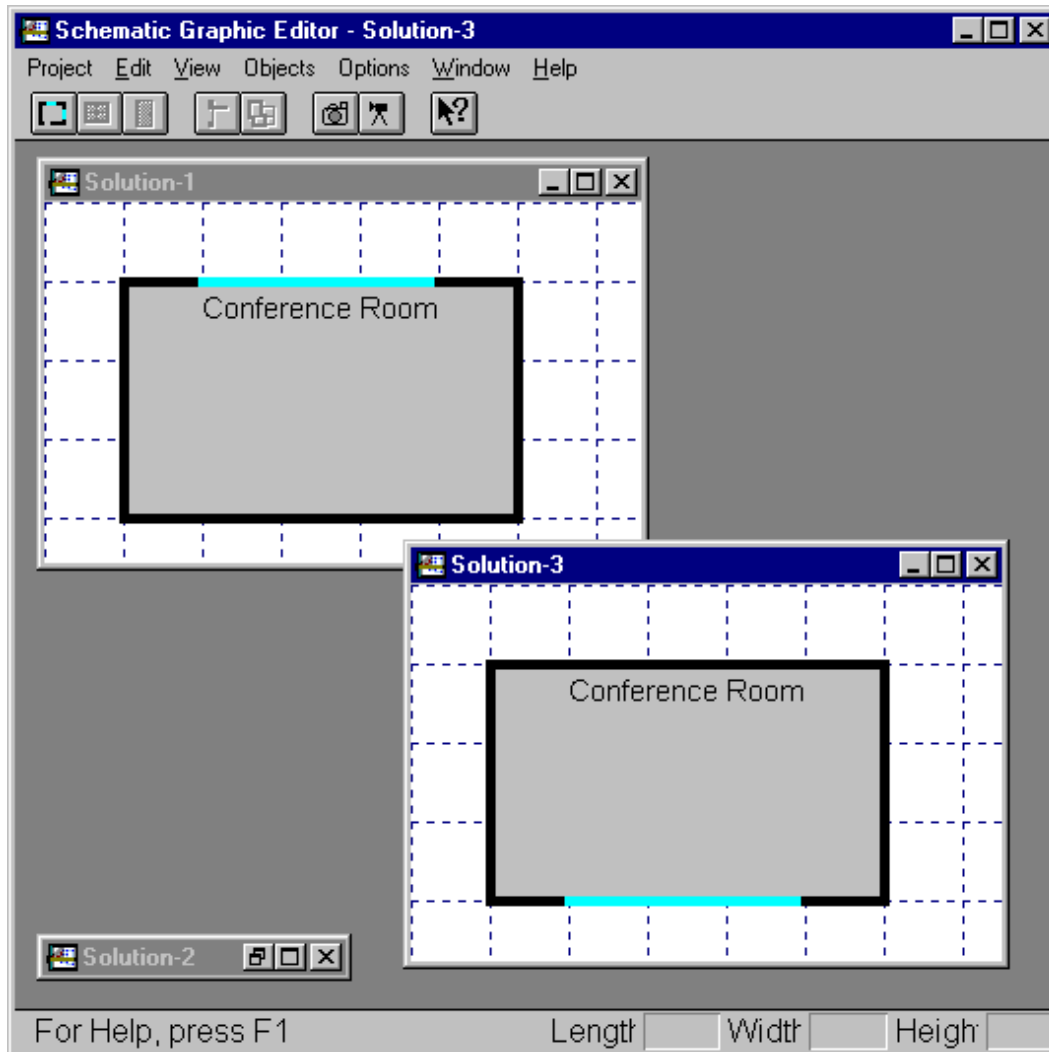


Figure 8. The Schematic Graphic Editor allows the user to draw and modify the geometry of building objects, and supports the display of multiple design alternatives, in their own windows.

The Prototypical Values Database

The Prototypical Values Database (PVD) contains values for a complete building description required as input to the simulation tools linked to the BDA. The PVD is used to complement the user-defined building model by specifying context dependent default values for those aspects of the building description which have not been directly addressed by the user. The selection of the default values is based on building location, building type and space type. For example, BDA selects a default exterior wall segment type by first computing the ASHRAE recommended minimum thermal resistance and then selecting a wall type from the library of walls that exceeds the computed insulation value.

The PVD relies on a wide variety of industry and professional sources for its prototypical values. These sources are critical in defining common practice standards for the design and performance of today's buildings, and are thus used in creating PVD building descriptions. Sources used for the PVD include:

- American Society of Heating, Refrigerating and Air-Conditioning Engineers, Inc. (ASHRAE) - Fundamentals Handbook, Applications Handbook, 90.1-1989 standard (with IES), etc.,
- California Energy Commission (CEC) - Advanced Lighting Guidelines, Non-Residential Compliance Manual, Technology Energy Savings, etc.,
- Building Officials and Code Administrators International, Inc. (BOCA) National Building Code, and
- Department of Energy - Energy Conservation Performance Standards for New Buildings.

Default values can also be replaced or supplemented by selections used as standard practice by any building design firm using the BDA.

The multimedia Case Studies Database

BDA is linked to a multimedia Case Studies Database (CSD) with information about existing buildings. This is in addition to third party databases with building data, which BDA accesses through query languages. The CSD allows BDA users to document information about existing buildings in the form of text, images, sound and video (**Figure 9**). In addition, the CSD supports any level of building description that follows the BDA object-oriented representation. The data entering can be performed through the Schematic Graphic Editor and the Building Browser, and extends to include measured data for all performance parameters addressed by the simulation tools linked to the BDA. In this way, the BDA can be used to compare expected and actual performance of buildings.

Special data types, such as audio, image and video, must be prepared in electronic form outside of the BDA and saved as individual Windows™ files. They can then be attached to the BDA data structures as "Reference" objects through the BDA graphical user interface. In addition to the referenced file, the user can provide information about parameters such as camera orientation, viewing angle, survey date, etc.

The initial version of BDA contains a small number of case studies to demonstrate the basic functionality of the CSD. However, it is also linked to an external database with descriptive and energy performance data for a large number of buildings (approximately 700) from the Southern California area. Through links to such large databases, the BDA allows for the computation of baseline performance statistics, which can form a realistic context for the evaluation of alternative design scenarios.

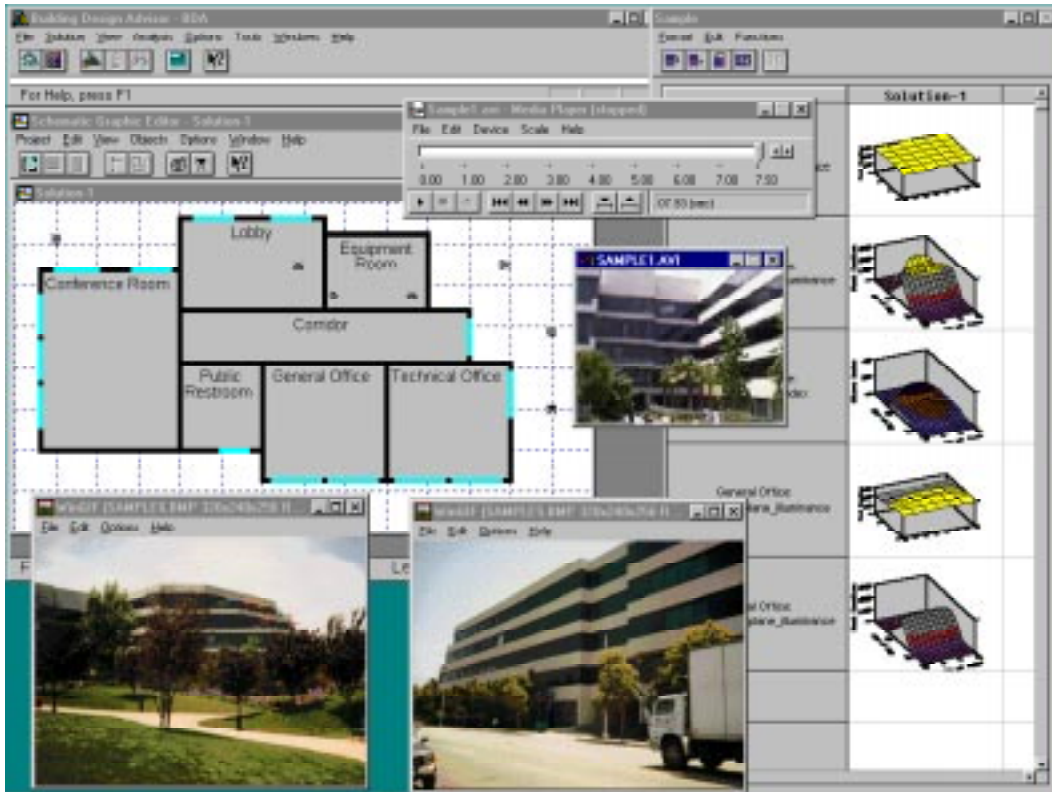


Figure 9. The Case Studies Database allows for complete documentation of existing buildings through the use of measured data, text, images, sound and video.

Current status and future directions

Currently, the BDA is in its beta release and includes links to the Schematic Graphic Editor (SGE) and a Daylighting Computation Module (DCM). Its data model is being expanded to address the needs of RESEM, a thermal and energy analysis tool [Carroll, et. al. 1989], and PowerDOE, the new version of the DOE-2 building energy simulation computer program [Hirsch et al 1995]. In addition, the data structures are expanded to address the whole building life-cycle for the development of links to tools addressing building construction, commissioning and operation.

While the current version of BDA is linked to a limited number of tools and databases, there is no intrinsic limitation on what can be connected. In a general sense, a tool is an external application which uses some or all of the BDA building description to perform some function or service. In addition to the development of links to more simulation tools, such as RADIANCE and COMIS, we also envision the development of smaller tools which may be invoked to create specialized or complicated objects such as Occupancy Schedules. These tools will be used much the same way spell checkers and equation editors are used in word processors.

The BDA distribution will follow two main channels: a commercial one for industry, and a non-commercial one, for academia (i.e., education and research). The academic distribution will be for use in building science, computer-aided design and design studio courses. In addition to its usefulness for teaching, the BDA also offers an integrated platform for software development. It provides all required database management and user interface functionality, so that students (as well as third party developers) can concentrate on the development of algorithms for performance analysis, equipment selection, diagnostics, design advice, etc., and use the BDA application programming interface to satisfy the input and output needs. Moreover, we expect that students will use the BDA to develop local Case Studies Databases that could then be shared over the Internet.

Distributed computing and multi-user collaborative design over the Internet is a major part of the long-term BDA vision. Both data and computational processes can be distributed over local and wide area networks, while specialized additions such as multi-video conferencing and white/transparent board capabilities can be used for effective communication among multiple building design, construction and operation participants. We are actively seeking collaboration opportunities in all of these research and development areas while looking forward to a building industry that greatly benefits from the advancements in the information, computing and communication technologies.

Acknowledgments

This work was supported by the Assistant Secretary for Energy Efficiency and Renewable Energy, Office of Building Technologies, Building Systems and Materials Division of the U.S. Department of Energy under Contract No. DE-AC03-76SF00098, and the California Institute for Energy Efficiency (CIEE), a research unit of the University of California. CIEE is a consortium of the CPUC, the CEC, and California utilities, including LADWP, SCE, SCG, SMUD, and PG&E. Publication of research results does not imply CIEE endorsement of or agreement with these findings, nor that of any CIEE sponsor.

References

- Birdsall, W.F. Buhl, K.L. Ellington, A.E. Erdem, and F.C. Winkelmann. 1990. "Overview of the DOE-2 building energy analysis program, version 2.1D." Lawrence Berkeley Laboratory report no. LBL-19735, Rev. 1, 1990.
- W.L. Carroll, B.E. Birdsall, R.J. Hitchcock, and R.C. Kammerud. 1989. "RESEM: An evaluation tool for energy retrofits in institutional buildings." Proceedings of the International Building Performance Simulation Association, pp. 107-112.
- H.E. Feustel. 1992. "Annex 23 multizone airflow modeling—an international effort." *Proceedings of the International Symposium on Air flow in Multizone Structures*, Budapest.
- J.J. Hirsch, F.C. Winkelmann, W.F. Buhl, K.L. Ellington, J.S. McMenamin, I. Rohmund, S.A. Criswell, A. Bhimani, B. Spurlock, D.J. Borstein, and K.F. Johnson. 1995.

“PowerDOE, a Windows™-based visually oriented analysis tool.” Proceedings of the International Building Performance Simulation Association, Madison, WI.

Modest, M. 1982. “A general model for the calculation of daylighting in interior spaces.” *Energy and Buildings*, Vol. 5, pp. 66-79.

Papamichael, K.M. and Protzen, J.P. 1993. “The limits of intelligence in design.” Proceedings of the Focus Symposium on “Computer-Assisted Building Design Systems” Proceedings of the 4th International Symposium on Systems Research, Informatics and Cybernetics, Baden-Baden, Germany.

Ward, G. J. 1990. “Visualization.” *Lighting Design and Application*, Vol. 20, No. 6, pp. 4-20.