

UC Irvine

Faculty Publications

Title

Greenhouse gas mitigation by agricultural intensification

Permalink

<https://escholarship.org/uc/item/2tg349tt>

Journal

Proceedings of the National Academy of Sciences, 107(26)

ISSN

0027-8424 1091-6490

Authors

Burney, J. A
Davis, S. J
Lobell, D. B

Publication Date

2010-06-15

DOI

10.1073/pnas.0914216107

Copyright Information

This work is made available under the terms of a Creative Commons Attribution License, available at <https://creativecommons.org/licenses/by/4.0/>

Peer reviewed

Greenhouse gas mitigation by agricultural intensification

Jennifer A. Burney^{a,b,1}, Steven J. Davis^c, and David B. Lobell^{a,b}

^aProgram on Food Security and the Environment and ^bDepartment of Environmental Earth System Science, Stanford University, Stanford, CA 94305 and ^cDepartment of Global Ecology, Carnegie Institution of Washington, Stanford, CA 94305

Edited by G. Philip Robertson, W. K. Kellogg Biological Station, Hickory Corners, MI, and accepted by the Editorial Board May 4, 2010 (received for review December 9, 2009)

As efforts to mitigate climate change increase, there is a need to identify cost-effective ways to avoid emissions of greenhouse gases (GHGs). Agriculture is rightly recognized as a source of considerable emissions, with concomitant opportunities for mitigation. Although future agricultural productivity is critical, as it will shape emissions from conversion of native landscapes to food and biofuel crops, investment in agricultural research is rarely mentioned as a mitigation strategy. Here we estimate the net effect on GHG emissions of historical agricultural intensification between 1961 and 2005. We find that while emissions from factors such as fertilizer production and application have increased, the net effect of higher yields has avoided emissions of up to 161 gigatons of carbon (GtC) (590 GtCO₂e) since 1961. We estimate that each dollar invested in agricultural yields has resulted in 68 fewer kgC (249 kgCO₂e) emissions relative to 1961 technology (\$14.74/tC, or ~\$4/tCO₂e), avoiding 3.6 GtC (13.1 GtCO₂e) per year. Our analysis indicates that investment in yield improvements compares favorably with other commonly proposed mitigation strategies. Further yield improvements should therefore be prominent among efforts to reduce future GHG emissions.

agriculture | greenhouse gas emissions | land use change | climate change mitigation | carbon price

Since the middle of the 20th century, global agricultural output has kept pace with a rapidly growing population, repeatedly defying Malthusian predictions of global food shortage. Between 1961 and 2005, the world's population increased by 111% (from 3.08 to 6.51 billion; Fig. 1, *Upper Left*), whereas crop production rose by 162% (from 1.8 to 4.8 billion tons; Fig. 1, *Upper Right*) (1). Although agricultural production has increased both by expanding the land area cultivated (extensification) and by improving crop yield from the land already under cultivation (intensification), the gains observed since 1961 were largely intensive. Global cropland grew by 27% (from 960 to 1,208 Mha; Fig. 1, *Lower Left*), but total crop yield increased by 135% (from 1.84 to 3.96 t/ha, weighted by production across crop groups; Fig. S1) (1). These yield gains—driven by dramatic increases in cereal and oil crops—resulted from adoption of higher-yielding crop varieties, increased use of pesticides and fertilizers (Fig. 1, *Lower Right*), and improved access to irrigation and mechanization.

From a humanitarian perspective, the agricultural intensification of the Green Revolution was a resounding success, but its environmental legacy is less clear. It has long been recognized that increased yields have spared forest and shrubland from conversion to cropland (2), but water use and chemical runoff impacted areas beyond those actually cultivated (3, 4) and abundant harvests provided the economic foundation for expanded nonagricultural land use (5). It remains a question whether modern agriculture can balance agronomy and ethics to sustain both ecological and human needs in the future (6–8). Substantial greenhouse gas (GHG) emissions from agricultural production and related land use changes further complicate this debate (9).

In 2005, agricultural production accounted for 1.4–1.7 gigatons of carbon (GtC) emissions (10–12% of total anthropogenic

GHG emissions; 1 GtC = 10⁹ metric tons of carbon), including 0.76 GtC equivalent N₂O and 0.90 GtC equivalent CH₄ (58% and 47% of the anthropogenic total, respectively) (10). In the same year, land use change (e.g., harvesting of forest products and clearing for agriculture) accounted for an additional 1.5 GtC emissions (11). The main components of agricultural emissions outside of land use change are N₂O released from soils related to the application of nitrogenous fertilizer (38%), CH₄ from livestock enteric fermentation, and CH₄ and N₂O from manure management (38%), CH₄ from cultivation of rice (11%), and CH₄ and N₂O from burning of savannah, forest, and agricultural residues (13%) (12). Beyond these direct emissions sources, the agricultural sector drives emissions in the industrial and energy sectors through production of fertilizers and pesticides, production and operation of farm machinery, and on-farm energy use (13).

Important mitigation potential has been identified in each of these areas (10). In particular, it has been estimated that modified rice drainage and straw incorporation practices could reduce global CH₄ emissions from rice cultivation by up to 30% (14). Precision agriculture and nutrient budgeting can facilitate more efficient use of fertilizers and thus reduce emissions associated with excess application (6). Finally, much attention has been paid to conservation tillage and the potential for sequestration of soil organic carbon in agricultural systems, which can build fertility and improve yields in degraded soils (15–21). Each of these strategies will undoubtedly play a role in any comprehensive set of crop management guidelines aimed at simultaneously mitigating agricultural GHG emissions and meeting increased future food demand, but the costs of achieving their estimated potential impacts are not well understood. It is thus instructive to compare these and other strategies to agricultural intensification, whose historical costs and impacts can be quantified.

To assess the climatic implications of agricultural intensification, we calculate agricultural GHG emissions for 1961–2005, as well as for two hypothetical “alternative world” scenarios in which growing food needs were met by land expansion (extensification) rather than yield increases (intensification). In each case, we include N₂O from agricultural soils; CH₄ from rice cultivation; C released from both biomass and soil by conversion of forest, shrub, and grassland to cropland; and N₂O, CH₄, and CO₂ from the production and use of nitrogenous, phosphate, and potash fertilizers.

In the first alternative world scenario (hereinafter AW1), we assume as a first approximation that population, the global

Author contributions: J.A.B., S.J.D., and D.B.L. designed research; J.A.B., S.J.D., and D.B.L. performed research; J.A.B., S.J.D., and D.B.L. analyzed data; and J.A.B., S.J.D., and D.B.L. wrote the paper.

The authors declare no conflict of interest.

This article is a PNAS Direct Submission. G.P.R. is a guest editor invited by the Editorial Board.

Freely available online through the PNAS open access option.

¹To whom correspondence should be addressed. E-mail: burney@stanford.edu.

This article contains supporting information online at www.pnas.org/lookup/suppl/doi:10.1073/pnas.0914216107/-DCSupplemental.

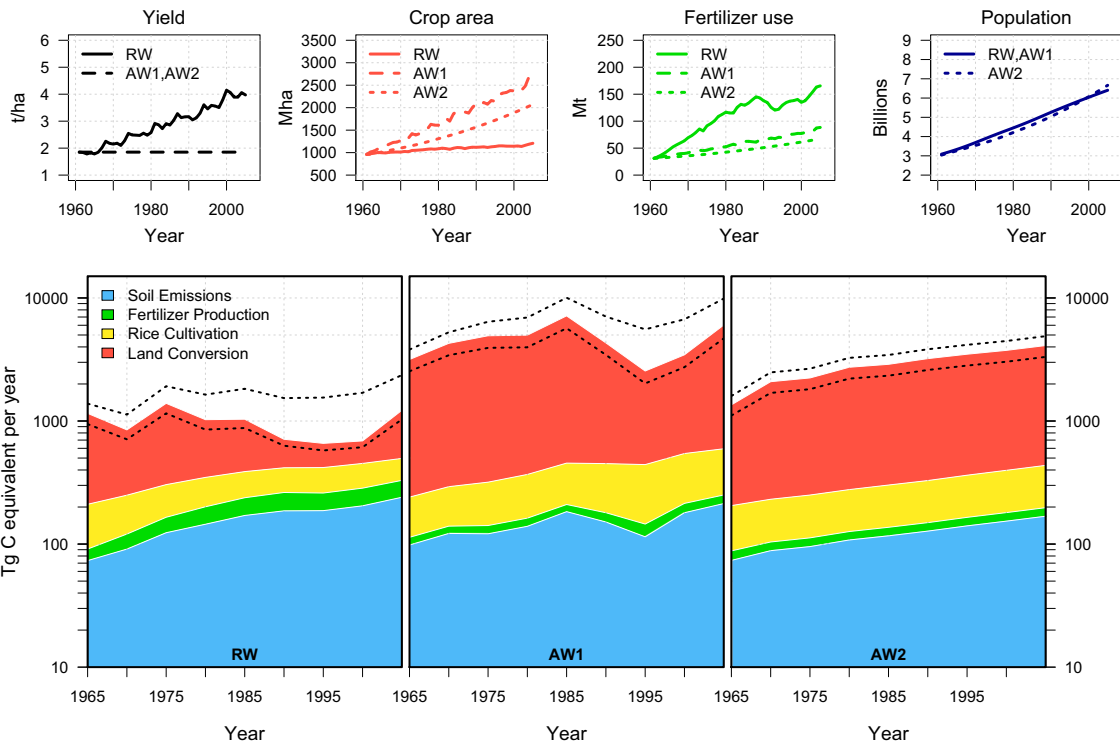


Fig. 2. Comparison of trends in the RW and AW scenarios between 1961 and 2005. (*Upper*) Agricultural yield weighted by production, cropland area, fertilizer consumption, and population. (*Lower*) Annual GHG emissions broken down by source (see *Methods*). The land use change values, plotted in green, assume the same pattern of expansion by biome in the RW and AW scenarios, corresponding to a global average of 105 ± 26 tC/ha lost, including both biomass and soil organic carbon losses.

GtC emitted by humans between 1850 and 2005 (11) (Fig. S3). A detailed explanation of the methodology is provided in *Methods*.

Cost of Carbon Savings. Assuming that yield advancements are directly related to research funding, we assess the cost-effectiveness of mitigation through yield improvements using the ratio of public and private spending on agricultural research since 1961 (30) and our AW1 and AW2 estimates of total emissions avoided through intensification. As described in *Methods*, we project where cropland expansion would have occurred in both AW scenarios; however, because it is difficult to identify both hypothetical expansion regions and the portions of agricultural investments that were relevant to yield improvements in the RW, we compute the cost-effectiveness ratio across a broad range of land carbon values and yield investment levels. Fig. 3 (*Upper*) shows the cost-effectiveness calculation for the AW1 scenario; Fig. S4 provides an equivalent plot for AW2. For the total land expansion difference between the RW and the AW scenarios (1,514 Mha for AW1, 864 Mha for AW2), any choice of average land expansion type and total yield investment value gives the effective carbon price (in \$/tC) of total avoided emissions between the AW scenarios and the RW.

For example, in a first simple estimate, we assume that the entirety of public and private investment in agriculture between 1961 and 2005 (estimated at \$1,152 billion US) contributed to yield gains achieved during that time period. Using the methodologies outlined above, we find that the average carbon content (soil + biomass) of land converted in the AW scenarios (and spared in the RW) to be ~ 105 tC/ha. These two values yield a carbon price for avoided emissions of \$7.16 in AW1 and \$13.32 in AW2 (per metric ton of carbon; plotted square). This method overestimates global spending on yield improvement but does not include other investments, like irrigation and fertilizer, which also contributed to yield improvements.

To refine this estimate, we narrow the range of spending to that directly relevant to yield improvements, and consider only the fraction of yield gains attributable to agricultural investment (as opposed to fertilizer, irrigation, machinery, etc.). Alston et al. (31) estimated the proportion of state agricultural research relevant for farm productivity in the United States to be between 57% and 69%. For the global case, a slightly more conservative assumption that 70% of all public and private research was relevant to yield improvements gives a cumulative 45-year total of \$806 billion in agricultural investments. Various estimates of factor productivity in agriculture estimate that research and development (R&D) accounts for around one-third of productivity growth (32–35). Attributing 34% of productivity growth (and thus carbon savings, or ~ 36 tC/ha) to agricultural R&D and assuming that 70% of R&D is relevant to farm productivity gives a carbon price of \$14.74 in AW1 and \$27.43 in AW2 (per metric ton of carbon; plotted triangle). This method can be similarly used for a range of AW investment and land expansion scenarios not explored here.

The size and cost of this carbon sink (over 45 years, $3.6 \pm 2.3 / -0.9$ GtC/yr for AW1 and 1.9 ± 0.5 GtC/yr for AW2) compares favorably with other proposed mitigation options available at $< \$73$ /tC in buildings (1.49 GtC/yr), energy supply (0.49 GtC/yr), transportation (0.46 GtC/yr), and industry (0.30 GtC/yr) (Fig. 3, *Lower*) (36).

Discussion

Implications of AW Scenarios. The AW scenarios presented above do not attempt to dynamically describe what might have occurred in the absence of yield improvements; rather, they demonstrate the range of possibilities by calculating, on the one hand, the area required to support modern global living standards with 1961 yields (AW1) and, on the other hand, the area required to maintain 1961 living standards (with 1961 yields)

manure management, and land conversion to grazing land are identical in both scenarios. Similarly, we assume that burning of agricultural residues is the same in both cases (because total production is the same). Finally, we do not include any pesticides or fuel use in our analysis, nor do we account for any transport of food in the AW1 scenario. (Food would be harvested and distributed from a more extensive land base in AW1.) Between 1961 and 2005, the number of agricultural tractors in use worldwide rose from 11.3 million to 28.5 million, an increase of 153%. Similarly, the irrigated area increased from 139 Mha to 284 Mha, a gain of 104% (1). Nonetheless, for both machinery and irrigation, an assumption of constant intensity in the AW (constant number of machines per area and constant percentage of area irrigated) would have resulted in greater emissions from machinery production and irrigation in the AW1. Thus, we conservatively assume that machinery use and irrigation area remained the same in AW1 and RW.

Additional Assumptions for the AW2 Scenario. Unlike in the AW1 scenario, livestock numbers are lower in the AW2 scenario (assuming constant per capita production at 1961 levels) than in the RW. Total RW annual livestock-related GHG emissions in 2004 (including feed production, farm operations, enteric fermentation, manure management, and soil emissions from pasture land and feed crops) have been estimated as ~ 1.94 GtC/yr equivalent (~ 7.1 GtCO₂e/yr), of which ~ 0.68 GtC/yr equivalent (~ 2.5 GtCO₂e/yr) is from land use changes (44). Extensive systems contributed 70% of these emissions (44); thus, a conservative estimate that the AW2 scenario included no intensive livestock operations results in a savings of up to ~ 0.58 GtC/yr (~ 2.1 GtCO₂e/yr) in the livestock sector compared with the RW.

Emissions due to burning of agricultural residues can be conservatively assumed to be 15% lower in AW2 than RW (the difference in total production), although we do not calculate burning emissions for the RW. As in the AW1 scenario, we do not include any pesticides, fuel use, or transport in the AW2 calculations. An assumption of constant intensity for machinery and irrigation results in 5% more irrigated land and 17% fewer agricultural tractors in the AW2 scenario compared with the RW.

Emissions Due to Conversion of Land to Cropland. To calculate emissions from the conversion of land to cropland in the RW, we first determine the expansion patterns by biome, following a method outlined previously (26). We overlay the Historical Croplands Dataset, 1700–1992 (0.5 degree; described in ref. 26) with the Global Potential Vegetation Dataset (0.5 degree; described in ref. 26) to estimate the percentage of cropland expansion occurring in each major biome for each year between 1961 and 1992. We follow the same procedure using the *Agricultural Lands in the Year 2000* dataset (5minute, described in ref. 45), and the 5minute version of the *Global Potential Vegetation Dataset*, and use these biome percentages from the year 2000 for the 1993–2005 period. These percentages are presented in Table S1 for reference.

Calculating carbon emissions due to land conversion is difficult because of large variations and uncertainties in biomass and soil carbon, as well as in sensitivity to the method of carbon accounting (reviewed and described in ref. 46). We assign biomass and soil carbon values to each biome (largely from refs. 27–29) and assume an uncertainty of $\pm 20\%$, reflective of regional variations. Table S2 summarizes the values used in our calculations, with sources.

We follow Gibbs et al. (27) and the 2006 Intergovernmental Panel on Climate Change (IPCC) Tier 1 GHG emissions calculations guidelines (47) and assume that carbon losses from land converted to cropland occur over 1 year and that carbon sequestration in abandoned cropland occurs over 20 years. We assume 70% of land converted to cropland is for crops, and 30% for tree plantations based on FAO trends (1), and that land converted for crops results in loss of 25% of soil carbon, and land converted to plantations results in loss of 10% of soil carbon. Finally, for land converted to cropland, we assign a new biomass carbon value of 1/2 the peak carbon content of the crop, assuming global average peak values of 5 t/ha for crops, 77 t/ha for oil crop plantations, and 34 t/ha for fruit (Table S2).

For the AW scenarios, we calculate emissions as follows for the baseline comparison plotted in Figs. 2 and 3, and presented in Figs. S3 and S4. We assume that land expansion occurred across different biomes at the same percentages as in the RW, and we assume the same uncertainty of $\pm 20\%$ for carbon values. These baseline AW land and soil carbon content assumptions correspond to

a global average of 105 ± 21 tC/ha lost (total, including both biomass and soil carbon losses) in the conversion of other types of land to cropland. Cumulative emissions from the RW and AW scenarios are plotted in Fig. S3.

Soil Organic Carbon Content Over Time. We assume that after a conversion to agricultural land, soil organic carbon content remains the same in the RW and AW scenarios. Although management practices, such as conservation tillage, can increase soil organic carbon content in both extensive and intensive systems (15, 16), we do not assume any such gains in the AW scenarios between 1961 and 2005.

Emissions From Fertilizer Production. To estimate emissions due to production of fertilizers used in a given year, we apply the Greenhouse Gases, Regulated Emissions, and Energy Use in Transportation (GREET) model emissions factors for nitrogen, phosphate, and potash fertilizers (48) to total fertilizer consumption data. We assume fertilizer application rates remain at 1961 levels in both AW scenarios, and scale fertilizer consumption and associated production emissions accordingly.

Emissions From Agricultural Soils. To calculate emissions from agricultural soils, we follow IPCC Tier 1 GHG inventory guidelines by crop group (47). Our estimates agree with those reported previously (12, 49, 50).

Rice Cultivation. As with total cropland, we calculate the amount of land that would be needed to meet RW production values with 1961 yields. We follow the methodology outlined by Yan (14, 51) to calculate methane emissions from rice cultivation and GHGs from the burning of rice straw. For both AW expansion scenarios, we assume that the percentages of rain-fed and irrigated systems are the same as in the RW, and that drainage practices and organic amendments are the same in each scenario. These values are derived following the methods and sources used by Yan et al. (14, 51–53).

Carbon Price Calculation. We estimate global total public and private agricultural investment values for 1961–2005 from (30). We use the values for public research spending in 1981, 1991, and 2000, and use the same public funding percentage for developing and developed world to estimate total spending in each time period. We assume a growth rate of 4.5% in spending between 1961–1981, and use the 1981 value to extrapolate back in time; we assume a linear increase from 1981 to 2000; and we estimate the values for 2001–2005 assuming a 2.1% annual growth in agricultural investment (30).

For a different perspective on the estimates presented in the paper, we perform a simple cost-benefit analysis and calculate the percentage of historic yield improvement that would have to be due to agricultural investment to break even, for a given carbon price. We use the baseline AW land carbon content assumptions described above, which correspond to a global average of 105 ± 21 tC/ha lost (total, including both biomass and soil carbon losses) in conversion of other types of land to cropland. This calculation is shown in Fig. S5 for both AW1 (Upper) and AW2 (Lower). Although carbon savings are not the only benefit of agricultural intensification, this analysis can be used to give an upper bound on the value of carbon savings due to agricultural investment.

Irrigation Investment. We do not include investment in irrigation infrastructure in our price calculation, nor do we make assumptions about irrigation investment in either AW scenario. However, it is worth noting that, between 1961–2005, global total area equipped for irrigation increased from 139 Mha to 284 Mha, with 75% of this change in Asia (19% in the Americas and Europe, 4% in Africa, and 1% in Oceania). Cost estimates for irrigation investments vary by region (54); using a value of \$2,000 per ha gives a total cost of \$310 billion, or just under 27% of the maximum global total agricultural investment.

ACKNOWLEDGMENTS. We thank three anonymous reviewers and W. Falcon, R. Naylor, P. Matson, J.E. Campbell, and M. Burke for their helpful comments. This work was supported by the Stanford University Program on Food Security and the Environment, the Stanford University Global Climate and Energy Project (GCEP), the Carnegie Institution, and NASA New Investigator Grant NNX08AV25G (to D.B.L.).

1. Food and Agriculture Organization of the United Nations. Food and Agriculture Organization of the United Nations statistical database. Available at: <http://faostat.fao.org/>. Accessed June 30, 2009.
2. Borlaug NE (1983) Contributions of conventional plant breeding to food production. *Science* 219:689–693.
3. Matson PA, Parton WJ, Power AG, Swift MJ (1997) Agricultural intensification and ecosystem properties. *Science* 277:504–509.

4. Tilman D, Cassman KG, Matson PA, Naylor R, Polasky S (2002) Agricultural sustainability and intensive production practices. *Nature* 418:671–677.
5. Angelsen A, Kaimowitz D, eds (2001) *Agricultural Technologies and Tropical Deforestation* (CABI, Wallingford, UK).
6. Vitousek PM, et al. (2009) Agriculture: Nutrient imbalances in agricultural development. *Science* 324:1519–1520.
7. Paarlberg R (2009) The ethics of modern agriculture. *Society* 46:4–8.

8. Balmford A, Green RE, Scharlemann JP (2005) Sparing land for nature: Exploring the potential impact of changes in agricultural yield on the area needed for crop production. *Glob Change Biol* 11:1594–1605.
9. Wise M, et al. (2009) Implications of limiting CO₂ concentrations for land use and energy. *Science* 324:1183–1186.
10. Smith P, et al. (2007) Agriculture. *Climate Change 2007: Mitigation Contribution of Working Group III to the Fourth Assessment Report of the Intergovernmental Panel on Climate Change*, eds Metz B, Davidson O, Bosch P, Dave R, Meyer L (Cambridge University Press, Cambridge, UK), pp 497–540.
11. Canadell JG, et al. (2007) Contributions to accelerating atmospheric CO₂ growth from economic activity, carbon intensity, and efficiency of natural sinks. *Proc Natl Acad Sci USA* 104:18866–18870.
12. U.S. Environmental Protection Agency (2006) *Global Anthropogenic Non-CO₂ Greenhouse Gas Emissions, 1990–2020*. EPA Report 430-R-06-003. (U.S. Environmental Protection Agency, Washington, DC).
13. West TO, Marland G (2002) A synthesis of carbon sequestration, carbon emissions, and net carbon flux in agriculture: Comparing tillage practices in the United States. *Agric Ecosyst Environ* 91:217–232.
14. Yan X, Akiyama H, Yagi K, Akimoto H (2009) Global estimations of the inventory and mitigation potential of methane emissions from rice cultivation conducted using the 2006 Intergovernmental Panel on Climate Change guidelines. *Global Biogeochem Cycles*, 10.1029/2008GB003299.
15. Lal R (2004) Soil carbon sequestration impacts on global climate change and food security. *Science* 304:1623–1627.
16. West TO, Post WM (2002) Soil organic carbon sequestration rates by tillage and crop rotation: A global data analysis. *Soil Sci Soc Am J* 66:1930–1946.
17. Gomiero T, Paoletti MG, Pimentel D (2008) Energy and environmental issues in organic and conventional agriculture. *Crit Rev Plant Sci* 27:239–254.
18. Grandy AS, Loecke TD, Parr S, Robertson GP (2006) Long-term trends in nitrous oxide emissions, soil nitrogen, and crop yields of till and no-till cropping systems. *J Environ Qual* 35:1487–1495.
19. Alvarez R (2005) A review of nitrogen fertilizer and conservation tillage effects on soil organic carbon storage. *Soil Use Manage* 21:38–52.
20. Smith P, et al. (2008) Greenhouse gas mitigation in agriculture. *Philos Trans R Soc Lond B* 363:789–813.
21. Robertson GP, Paul EA, Harwood RR (2000) Greenhouse gases in intensive agriculture: Contributions of individual gases to the radiative forcing of the atmosphere. *Science* 289:1922–1925.
22. Evenson RE, Gollin D (2003) Assessing the impact of the green revolution, 1960 to 2000. *Science* 300:758–762.
23. Evenson RE, Gollin D, eds. (2003) *Crop Variety Improvement and Its Effect on Productivity: The Impact of International Agricultural Research* (CABI, Wallingford, UK).
24. Heuveline P (1999) The global and regional impact of mortality and fertility transitions, 1950–2000. *Popul Dev Rev* 25:681–702.
25. Food and Agriculture Organization of the United Nations, Land and Water Development Division. TERRASTAT: Land resource potential and constraints statistics at country and regional levels. Available at: <http://www.fao.org/ag/agl/agll/terrastat/>. Accessed September 8, 2009.
26. Ramankutty N, Foley JA (1999) Estimating historical changes in global land cover: Croplands from 1700 to 1992. *Global Biogeochem Cycles* 13:997–1027.
27. Gibbs HK, et al. (2008) Carbon payback times for crop-based biofuel expansion in the tropics: The effects of changing yield and technology. *Environ Res Lett* 3:034001.
28. Gibbs HK, Brown S, Niles JO, Foley JA (2007) Monitoring and estimating tropical forest carbon stocks: Making REDD a reality. *Environ Res Lett* 2:045023.
29. Houghton RA (1999) The annual net flux of carbon to the atmosphere from changes in land use, 1850–1990. *Tellus B* 51:298–313.
30. Pardey PG, Beintema N, Dehmer S, Wood S (2006) *Agricultural Research: A Growing Global Divide?* (Agricultural Science and Technology Indicators Initiative, International Food Policy Research Institute, Washington, DC).
31. Alston JM, Beddow JM, Pardey PG (2009) Agricultural research, productivity, and food prices in the long run. *Science* 325:1209–1210.
32. Evenson RE, Pray C, Rosegrant MW (1998) *Agricultural Research and Productivity Growth in India* (International Food Policy Research Institute, Washington, DC).
33. Rosegrant MW, Evenson RE (1992) Agricultural productivity and sources of growth in South Asia. *Am J Agric Econ* 74:757–761.
34. Fan S, Pardey PG (1997) Research, productivity, and output growth in Chinese agriculture. *J Dev Econ* 53:115–138.
35. Rejesus RM, Heisey PW, Smale M (1999) *Sources of Productivity Growth in Wheat: A Review of Recent Performance and Medium- to Long-Term Prospects*. (Centro Internacional de Mejoramiento de Maíz y Trigo, El Batán, Mexico), pp 99–105.
36. Barker T, et al. (2007) Mitigation from a cross-sectoral perspective. *Climate Change 2007: Mitigation Contribution of Working Group III to the Fourth Assessment Report of the Intergovernmental Panel on Climate Change*, eds Metz B, Davidson O, Bosch P, Dave R, Meyer L (Cambridge University Press, Cambridge, UK), pp 619–690.
37. Robertson GP, Vitousek PM (2009) Nitrogen in agriculture: Balancing the cost of an essential resource. *Annu Rev Environ Resources* 34:97–125.
38. Ewers RM, Scharlemann JPW, Balmford A, Green RE (2009) Do increases in agricultural yield spare land for nature? *Glob Change Biol* 15:1716–1726.
39. Green RE, Cornell SJ, Scharlemann JP, Balmford A (2005) Farming and the fate of wild nature. *Science* 307:550–555.
40. Matson PA, Vitousek PM (2006) Agricultural intensification: Will land spared from farming be land spared for nature? *Conserv Biol* 20:709–710.
41. Rudel TK, et al. (2009) Agricultural intensification and changes in cultivated areas, 1970–2005. *Proc Natl Acad Sci USA* 106:20675–20680.
42. Food and Agriculture Organization of the United Nations (2006) *World Agriculture: Towards 2030/2050* (Food and Agriculture Organization of the United Nations, Rome).
43. Loarie SR, Asner GP, Field CB (2009) Boosted carbon emissions from Amazon deforestation. *Geophys Res Lett* 36:L14810.
44. Steinfeld H, Gerber P, Wassenaar TD, Castel V, de Haan C (2006) *Livestock's Long Shadow: Environmental Issues and Options* (Food and Agriculture Organization of the United Nations, Rome).
45. Ramankutty N, Evan AT, Monfreda C, Foley JA (2008) Farming the planet, 1: Geographic distribution of global agricultural lands in the year 2000. *Global Biogeochem Cycles* 22:GB1003.
46. Ramankutty N, et al. (2007) Challenges to estimating carbon emissions from tropical deforestation. *Glob Change Biol* 13:51–66.
47. Eggleston S, Buendia L, Miwa K, Ngara T, Tanabe K, eds. (2006) *2006 IPCC Guidelines for National Greenhouse Gas Inventories*. (Institute for Global Environmental Strategies, Hayama, Japan).
48. US Department of Energy, Argonne National Laboratory (2009) The Greenhouse Gases, Regulated Emissions, and Energy Use in Transportation (GREET) model, Version 1.8c.0. Available at: http://www.transportation.anl.gov/modeling_simulation/GREET/. Accessed March 23, 2009.
49. Davidson EA (2009) The contribution of manure and fertilizer nitrogen to atmospheric nitrous oxide since 1860. *Nat Geosci* 2:659–662.
50. Mosier A, et al. (1998) Closing the global N₂O budget: Nitrous oxide emissions through the agricultural nitrogen cycle. *Nutr Cycl Agroecosyst* 52:225–248.
51. Yan X, Yagi K, Akiyama H, Akimoto H (2005) Statistical analysis of the major variables controlling methane emission from rice fields. *Glob Change Biol* 11:1131–1141.
52. Yan X, Ohara T, Akimoto H (2006) Bottom-up estimate of biomass burning in mainland China. *Atmos Environ* 40:5262–5273.
53. Yevich R, Logan JA (2003) An assessment of biofuel use and burning of agricultural waste in the developing world. *Global Biogeochem Cycles*, 10.1029/2002GB001952.
54. Inocencio A, et al. (2007) *Costs and Performance of Irrigation Projects: A Comparison of Sub-Saharan Africa and Other Developing Regions*. (International Water Management Institute, Battaramulla, Sri Lanka).