

**UCLA**  
**Contemporary Music Score Collection**

**Title**

Reaching for the Unreachable Point of Desire

**Permalink**

<https://escholarship.org/uc/item/2st12677>

**Author**

Diba, Pedram

**Publication Date**

2020

# Reaching for the Unreachable Point of Desire (2020)

for violin, percussion, trombone, and bass clarinet



# Performance Notes:

m.s.t: molto sul tasto

s.t.: sul tasto

s.p.: sul ponticello

m.s.p.: molto sul ponticello

G: growl

M: multiphonic on the given fundamental

Z: split tone

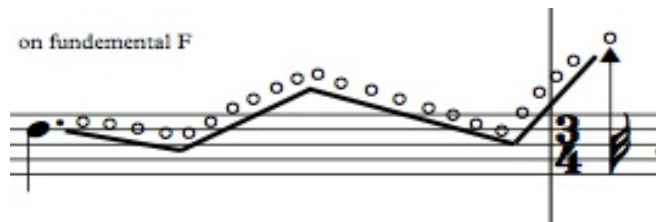
On the string: this indicates that the performer should play on the part of the bar that is above the string


rapidly  
+ → o → + : this indicates rapid closing and opening of the mute


Arrows indicate gradual shift from one form of playing to another

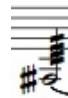


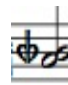
Harmonic glissando on the indicated fundamental



 Half Sharp: This means the note should be a bit lower than the actual sharp.  
Example: G half sharp is a tone half way in between G natural and G sharp

 Half flat: This means the note should be a bit higher than the actual flat.  
Example: E half flat is a tone in between E natural and E flat

 Half Sharped Sharp: This means the note should be a bit higher than the actual sharp.  
Example: G half sharped sharp is a tone half way in between G sharp and A

 Half Flattened Flat: This means the note should be a bit lower than the actual flat.  
Example: G half flattened flat is a tone half way in between G flat and F

## Instruments:

Violin

Percussion (vibraphone and snare drum)

Trombone

Bass clarinet in B $\flat$

## Stage Stetting:

Percussion

Trombone

Violin

Bass clarinet

Conductor

Duration: 9 minutes

# Reaching for the Unreachable Point of Desire

Transposing Score

$\text{♩} = 100$

s.t. → m.s.p.  
jete

damp strings

Violin

*p* ————— *ff*  
*mf* ————— *ff*  
*p* ————— *f* *p subito* ————— *ff*

medium mallets

Vibraphone

*p* ————— *ff*  
*mf* ————— *ff*  
*p* ————— *f* *p subito* ————— *ff*

wah wah mute

rapidly

Trombone

*p* ————— *ff*  
*mf* ————— *ff*  
*p* ————— *mf* *p subito* ————— *f* *p subito* ————— *ff*

double tongue;  
as fast as possible

Bass Clarinet in B $\flat$

*p* ————— *ff*  
*mf* ————— *ff*  
*p* ————— *f* *p* ————— *ff*

**Vln.**  
 6 *ff* *n* *p* *mf* *sfz* *p* *f* *p* *f* *p* *f*  
 tr  
 II  
 III

**Vib.**  
*ff* *p* *mf* *mf*  
 Ped. *mf*  
 1.v.

**Tbn.**  
*ff* *p subito* *mf* *pp* *mp* *pp < f* *pp < f*  
 hit the mouth piece with palm of hand

**B. Cl.**  
*ff* *p subito* *mf* *f*  
 tr  
 with airy quality; half tone half air  
 ord.

12

Vln. *fff* *p* *f* *p subito* *ff* *mf* *p* *ff*

Vib. *ff* *p* *f* *p subito* *ff* *pp* *mf* *p* *ff*

Tbn. *p* *fff* *p* *mf* *p subito* *f* *p subito* *ff* *pp* *mf* *p* *ff*

B. Cl. *p* *fff* *p* *f* *p* *ff* *pp* *mf* *p* *ff*

ord. jete

senza pedal

1/2 pedal

machinegun tonguing; rapidly

III IV

5 5

3 5

Detailed description of the musical score: The score is for four instruments: Violin (Vln.), Vibraphone (Vib.), Trombone (Tbn.), and Bass Clarinet (B. Cl.). It is divided into four measures. Measure 1 (measures 12-13) shows a single note for Vln. and B. Cl. with a *fff* dynamic. Measure 2 (measures 14-15) features a melodic line for Vln. and Vib. with dynamics *p*, *f*, *p subito*, and *ff*. The Tbn. part has a zig-zagging line with dynamics *p*, *mf*, *p subito*, *f*, *p subito*, and *ff*. The B. Cl. has a triplet of eighth notes with dynamics *p*, *f*, and *p*, followed by a quintuplet with dynamics *ff*. Measure 3 (measures 16-17) shows a melodic line for Vln. with dynamics *mf* and *p*, and a similar line for Vib. with dynamics *pp* and *mf*. The Tbn. has a melodic line with dynamics *pp* and *mf*. The B. Cl. has a triplet of eighth notes with dynamics *pp* and *mf*. Measure 4 (measures 18-19) features a melodic line for Vln. with dynamics *p* and *ff*, and a similar line for Vib. with dynamics *p* and *ff*. The Tbn. has a melodic line with dynamics *p* and *ff*. The B. Cl. has a quintuplet of eighth notes with dynamics *p* and *ff*. Performance instructions include 'ord. jete' for Vln., 'senza pedal' for Vib., '1/2 pedal' for Vib., and 'machinegun tonguing; rapidly' for Tbn. Fingerings '5' and '3' are indicated for Vib. and B. Cl. respectively. Roman numerals 'III' and 'IV' are placed above the Vln. staff in the final measure.



17

Vln. *f* *mp* *tr* *s.p.* *(b+)*

Vib. *f* *mp* *pp* *mf* *1/2 pedal*


Tbn. *p* *slide vib.* *speed up and narrow vib senza vib.*

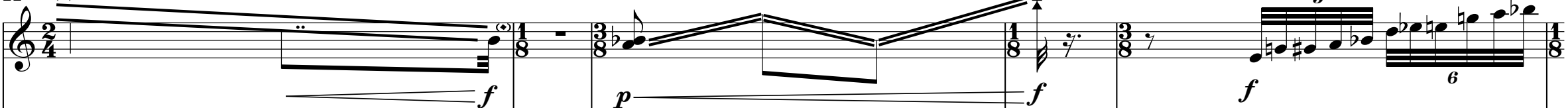
B. Cl. *p* *mf* *p* *mf*


from the bottom to the top of the instrument

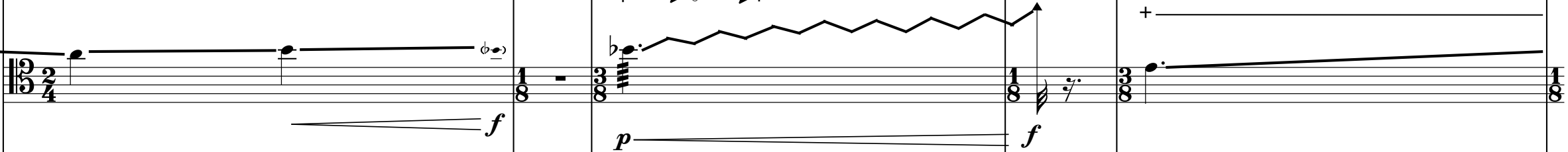
senza pedal

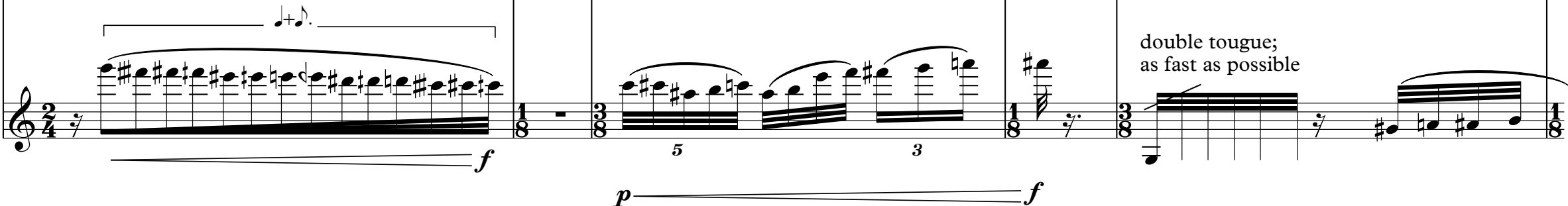
Detailed description of the musical score: The score is for measures 17-20. It features four staves: Violin (Vln.), Viola (Vib.), Trombone (Tbn.), and Bass Clarinet (B. Cl.). The key signature has one flat (B-flat), and the time signature changes from 4/4 to 2/4 at measure 19. The Violin part starts with a forte (*f*) dynamic, followed by a mezzo-piano (*mp*) dynamic and a trill (*tr*) marked *s.p.* (senza pedale). The Viola part begins with a forte (*f*) dynamic, then mezzo-piano (*mp*), piano-pianissimo (*pp*), and mezzo-forte (*mf*). It includes a *1/2 pedal* instruction. The Trombone part is mostly silent, with a piano (*p*) dynamic and instructions for *slide vib.* and *speed up and narrow vib senza vib.* The Bass Clarinet part starts with a piano (*p*) dynamic and features a crescendo to mezzo-forte (*mf*) in measures 19 and 20. Performance instructions include 'from the bottom to the top of the instrument' for the Viola and 'senza pedal' for the Violin.

22 (tr) 

Vln. 

Vib. 

Tbn. 

B. Cl. 

27

ord.

s.p.  
IV

Vln.

Vib.

Tbn.

B. Cl.

6

6

6

6

mp

f

1/2 pedal

senza pedal

5

6

6

mp

f

rapidly

+ → ○ → +

f

5

6

6

mp

f

Ped.

tr

Detailed description of the musical score: The score is for measures 27-30. It features four staves: Violin (Vln.), Viola (Vib.), Trombone (Tbn.), and Bass Clarinet (B. Cl.).  
 - **Violin (Vln.):** Starts with a treble clef, 8/8 time signature, and a key signature of one flat. It features sixteenth-note runs with fingerings '6' and dynamics *mp* and *f*.  
 - **Viola (Vib.):** Starts with a treble clef, 8/8 time signature, and a key signature of one flat. It features sixteenth-note runs with fingerings '6' and dynamics *mp* and *f*.  
 - **Trombone (Tbn.):** Starts with a bass clef, 13/8 time signature, and a key signature of one flat. It features a melodic line with dynamics *mp* and *f*.  
 - **Bass Clarinet (B. Cl.):** Starts with a treble clef, 8/8 time signature, and a key signature of one flat. It features a melodic line with dynamics *mp* and *f*.  
 - **Performance Instructions:** 'ord.' (order) is written above the Vln. staff. 's.p. IV' (senza pedale) is written above the Vib. staff. '1/2 pedal' is written above the Vib. staff. 'senza pedal' is written above the Vib. staff. 'rapidly' is written above the Tbn. staff. 'Ped.' (pedal) is written below the Vib. staff. 'tr' (trill) is written above the Vln. staff.  
 - **Other markings:** Fingerings '6' and '5' are indicated. Dynamics *mp* and *f* are used throughout. A 'trill' (tr) is marked at the end of the Vln. part.

32

Vln. *ff* *f* *mp* *f*

ord.

6 6 6

Vib. *f* *mp* *f* *mp* *f*

1/2 pedal

6 6 6 6 6

Tbn. *ff* *mp* *f*

rapidly  
+ → ○ → +

B. Cl. *mp* *f*

s.p.  
II  
III

high bow pressure → normal bow pressure

36

Vln. *f* → *ff* *ff* *mf*

Vib. *f* → *ff* *ff* *mf*

Tbn. *mf* → *ff* → *mf* → *ff* *ff* → *mf* *mf*

B. Cl. *f* → *ff* *ff* → *p*

Ped. + G M

molto s.t.

40

Vln.

*pp*

Vib.

on the string;  
rapidly with irregular rhythm

*pp*

Tbn.

*pp*

*pp* *pp* *pp* *pp* *pp* *pp* *p* *pp* *pp* *pp* *p* *pp* *pp* *pp* *p*

B. Cl.

*pp*

*p*

42 ord. → molto s.p. → high bow pressure → ord.

Vln. *mp* → *f* → *fff* *ppp*

Vib. *mp* → *f* *fff* Red.

Tbn. *p* *mp* *p* *mp* *p* *mf* *p* *mf* *p* *f* *p* *f* *p* *ff* *p* *ff* *p* *fff*

B. Cl. double tougue; as fast as possible split tone *f* → *fff* *p* *fff*

Detailed description of the musical score: The score is for four instruments: Violin (Vln.), Viola (Vib.), Trombone (Tbn.), and Bass Clarinet (B. Cl.). It is divided into four measures. The first measure starts at measure 42. The Vln. part has a dynamic marking of *mp* and a performance instruction 'ord.' with an arrow pointing to 'molto s.p.' in the second measure. The Vib. part has a dynamic marking of *mp* and a performance instruction 'ord.' with an arrow pointing to 'molto s.p.' in the second measure. The Tbn. part has a dynamic marking of *p* and a performance instruction 'double tougue; as fast as possible' in the first measure. The B. Cl. part has a dynamic marking of *mp* and a performance instruction 'double tougue; as fast as possible' in the first measure. In the second measure, the Vln. and Vib. parts have dynamic markings of *f* and *fff* respectively, and the Tbn. part has dynamic markings of *p*, *f*, *p*, *f*, *p*, *ff*, *p*, *ff*. In the third measure, the Vln. part has a dynamic marking of *fff* and a performance instruction 'high bow pressure' with an arrow pointing to the right. The Vib. part has a dynamic marking of *fff* and a performance instruction 'Red.'. The Tbn. part has a dynamic marking of *p* and *fff*. The B. Cl. part has a dynamic marking of *f* and a performance instruction 'split tone' with a wavy line. In the fourth measure, the Vln. part has a dynamic marking of *ppp* and a performance instruction 'ord.' with an arrow pointing to the right. The Vib. part has a dynamic marking of *ppp*. The Tbn. part has a dynamic marking of *p* and *fff*. The B. Cl. part has a dynamic marking of *p* and *fff*. The score includes various musical notations such as notes, rests, and dynamic markings.

47

Vln. *p* *f* *mf* *s.t.*

Vib. *ppp* *p* *f* *ff* *mf* rapidly; on the string gradually release pedal

Tbn. *ff* *mp* slide vib

B. Cl. *p* *f* *ff* *mp* *mp*



51

Vln.

Vib.

Tbn.

B. Cl.

senza pedal

ord.

l.v.

Ped.

bisb.

*ff* *mp* *n* *mp* *pp* *pp* *f* *mp* *n* *n*

Detailed description of the musical score: The score is for measures 51-54. The Violin (Vln.) part starts with a melodic line in 2/4 time, marked *mp*, and then changes to 4/4 time with dynamics *ff*, *mp*, and *n*. The Vibraphone (Vib.) part is marked "senza pedal" and "ord." (order), starting with a tremolo in 2/4 time and then moving to 4/4 time with dynamics *ff* and *mp*. The Trombone (Tbn.) part is in 3/4 time, marked *ff* and *mp*, with a *pp* dynamic at the end. The Bass Clarinet (B. Cl.) part is in 2/4 time, marked *mp*, and then 4/4 time with dynamics *f*, *mp*, and *n*. A wavy line labeled "bisb." indicates a tremolo effect in the B. Cl. part.

55

Vln. *pp* *molto s.t.* 7 7 7 13

Vib. on the string with pedal *pp*

Tbn. *mp* *pp* *pp*

B. Cl. *mp* *mp* *pp* 5 5

bisb.

Detailed description of the musical score: The score is for four instruments: Violin (Vln.), Viola (Vib.), Trombone (Tbn.), and Bass Clarinet (B. Cl.). It is divided into four measures. Measure 1 (measures 55-61) features a long note in Vln. and Vib. with a '7' bracket below. Vln. has a dynamic of *pp*. Vib. is marked 'on the string'. Tbn. has a long note with a dynamic of *mp*. B. Cl. has a long note with a dynamic of *mp* and a 'n' marking below. Measure 2 (measures 62-68) features a '7' bracket in Vln. with a dynamic of *pp* and the instruction 'molto s.t.'. Vib. has a 'with pedal' box. Tbn. has a dynamic of *pp*. B. Cl. has a '5' bracket and a dynamic of *mp*. Measure 3 (measures 69-75) features a '7' bracket in Vln. with a dynamic of *pp*. Tbn. has a dynamic of *pp*. B. Cl. has a '5' bracket and a dynamic of *pp*. Measure 4 (measures 76-82) features a '7' bracket in Vln. with a dynamic of *pp*. Tbn. has a dynamic of *pp*. B. Cl. has a '5' bracket and a dynamic of *pp*. The score includes various performance markings such as slurs, accents, and dynamic changes.

14

59

Vln.

Vib.

Tbn.

B. Cl.

7

5

Detailed description: This musical score page contains four staves. The Violin (Vln.) staff at the top features a melodic line with slurs and accents, marked with a '7' above each measure. The Vibraphone (Vib.) staff is completely blacked out. The Trombone (Tbn.) staff includes a line with a crescendo hairpin and a melodic line with slurs and accents, marked with a '5' below each measure. The Bass Clarinet (B. Cl.) staff also features a melodic line with slurs and accents, marked with a '5' below each measure. The page is divided into four measures by vertical bar lines.

63

Vln.

7

7

7

7

senza pedal  
ord.

Vib.

Tbn.

B. Cl.

5

5

5

5

4/8

4/8

4/8

4/8

This musical score page contains four staves: Violin (Vln.), Vibraphone (Vib.), Trombone (Tbn.), and Bass Clarinet (B. Cl.). The Violin staff features a melodic line with slurs and accents, divided into four measures by vertical bar lines. Above the staff are four '7' markings, likely indicating fingerings. The Vibraphone staff has a melodic line with a 'senza pedal ord.' instruction above the first measure. The Trombone staff shows a melodic line with a slur and a '+' marking above the first measure, and a circled 'o' above the second measure. The Bass Clarinet staff has a melodic line with a slur and a '5' marking below the first measure. The time signature changes from 4/8 to 4/8 in the third measure. The page number '15' is in the top right corner.

66

Vln.

Violin staff with treble clef, key signature of one sharp (F#), and a melodic line with a long slur across the measure.

Vib.

Viola staff with treble clef, key signature of one sharp (F#), and a melodic line with slurs and "Ped." markings.

Tbn.

Tuba staff with bass clef, key signature of one sharp (F#), and a melodic line with slurs and articulation marks.

B. Cl.

Bass Clarinet staff with treble clef, key signature of one sharp (F#), and a melodic line with slurs and a "5" marking.

68

Vln. *m.s.p.*

Vib. *ff* *p* *ff*

Tbn. *ff* *p* *ff*

B. Cl. *ff* *p* *ff*

s.t. jete *m.s.p.*

slide vib

3 5

Detailed description of the musical score: The score is for measures 68-71. It features four staves: Violin (Vln.), Vibraphone (Vib.), Trombone (Tbn.), and Bass Clarinet (B. Cl.).  
 - **Violin (Vln.):** Starts with a whole rest in measure 68. In measure 69, it plays a half note G4. In measure 70, it plays a half note G4. In measure 71, it plays a half note G4. Dynamics: *ff* in measure 69, *p* in measure 70, *ff* in measure 71. Performance instruction: *m.s.p.* (mezzo-soprano) with an arrow pointing to measure 71.  
 - **Vibraphone (Vib.):** Measures 68-69: Tremolos on G4 and A4. Measure 70: Tremolo on G4. Measure 71: Tremolo on G4. Dynamics: *ff* in measure 69, *p* in measure 70, *ff* in measure 71. Performance instruction: *Ped.* (pedal) with a bracket under measures 69-71.  
 - **Trombone (Tbn.):** Measures 68-69: Whole rest. Measure 70: Half note G3. Measure 71: Half note G3. Dynamics: *ff* in measure 70, *p* in measure 71, *ff* in measure 71. Performance instruction: *slide vib* with a line connecting the notes in measures 70-71.  
 - **Bass Clarinet (B. Cl.):** Measures 68-69: Tremolos on G3 and A3. Measure 70: Tremolo on G3. Measure 71: Tremolo on G3. Dynamics: *ff* in measure 70, *p* in measure 71, *ff* in measure 71. Performance instruction: *3* (triplets) and *5* (quintuplets) with arrows pointing to the notes in measure 71.  
 - **Other:** Performance instruction *s.t. jete* (staccato jete) with an arrow pointing to measure 71.

71 *tr*

Vln. *p* ————— *f p subito* < *ff* *f* > *p* < *f*

Vib. *pp* < *mf*  
Ped. \_\_\_\_\_  
*p* ————— *f p subito* < *ff*  
Ped. \_\_\_\_\_  
*mf* *pp* ————— *mf*

Tbn. + ————— + ————— + ————— + ————— +  
*p* < *mf p subito* < *f p subito* < *ff* *pp* ————— *mf*

B. Cl. *ff p subito*  
*f* *p* ————— *ff* *ff* *pp* ————— *mf*

Detailed description of the musical score: The score is divided into four systems, each corresponding to a different instrument. The first system is for Violin (Vln.), the second for Viola (Vib.), the third for Trombone (Tbn.), and the fourth for Bass Clarinet (B. Cl.). Each system contains musical notation for measures 71 through 76. The Violin part starts with a tremolo (tr) in measure 71 and features dynamic markings of p, f, p subito, ff, f, p, and f. The Viola part includes fingerings (5, 6) and dynamic markings of pp, mf, p, f, p subito, ff, mf, pp, and mf. The Trombone part shows a series of plus signs (+) and dynamic markings of p, mf, p subito, f, p subito, ff, pp, and mf. The Bass Clarinet part features dynamic markings of ff, p subito, f, p, ff, ff, pp, and mf. The score also includes performance instructions such as 'Ped.' (pedal) and 'tr' (tremolo).

75 III IV

Vln. *p* *ff* *mp* *p* *ff*

Vib. *p* *ff* *pp* *p* *ff* *9* *3* *5* *5*

Tbn. *p* *ff* *mp* *p* *ff* machinegun tonguing; rapidly + → ○ → + on fundamental F

B. Cl. *p* *ff* *pp* *mp* *p* *ff* *5* *3* harmonic gliss

Detailed description of the musical score: The score is for measures 75-79. It features four staves: Violin (Vln.), Vibraphone (Vib.), Trombone (Tbn.), and Bass Clarinet (B. Cl.).  
 - **Vln.:** Starts at measure 75 with a long note, marked *p* and *ff*. Measure 76 has a dynamic of *mp*. Measures 77-78 show a melodic line with dynamics *p* and *ff*. Measure 79 has a dynamic of *ff*.  
 - **Vib.:** Measure 75 has a dynamic of *p* and *ff*. Measure 76 has a dynamic of *pp*. Measures 77-78 have dynamics *p* and *ff*. Measure 79 has a dynamic of *ff*.  
 - **Tbn.:** Measure 75 has a dynamic of *p* and *ff*. Measure 76 has a dynamic of *mp*. Measures 77-78 have dynamics *p* and *ff*. Measure 79 has a dynamic of *ff*.  
 - **B. Cl.:** Measure 75 has a dynamic of *p* and *ff*. Measure 76 has dynamics *pp* and *mp*. Measures 77-78 have dynamics *p* and *ff*. Measure 79 has a dynamic of *ff*.  
 - **Performance Instructions:** "machinegun tonguing; rapidly" is written above the Tbn. and B. Cl. staves. "senza pedal" is written above the Vib. staff. "harmonic gliss" is written above the B. Cl. staff. "on fundamental F" is written above the Tbn. staff. "Ped." is written below the Vib. staff. "II" is written above the Vln. staff. "9", "3", and "5" are written above the Vib. staff. "3" and "5" are written above the B. Cl. staff. "molto vib." is written at the top right. The page number "19" is at the top right.



81 ord. →

Vln. *f* 3 5 3 *mp* 5 6 5

Vib. *mp* 6 5 *Ped.*

Tbn.

B. Cl. *mp* 6 6 6 7

85

Vln. *f* *ff* *ff* *pp* m.s.p. molto vib

Vib. *f* *ff* with pedal *ff* *mf* *pp*

Tbn. on fundamental F# *ff* slide vib *p* *mf* *p* slow wide vib.

B. Cl. *ff* *p* *p* *mf*

Detailed description of the musical score: The score is for measures 85-89. It features four staves: Violin (Vln.), Viola (Vib.), Trombone (Tbn.), and Bass Clarinet (B. Cl.).  
 - **Violin (Vln.):** Measures 85-86: sixteenth-note runs with dynamics *f* and *ff*. Measure 87: *ff* with a slur. Measure 88: *pp* with a slur. Measure 89: *pp* with a slur. Performance instructions: "m.s.p." (mezzo-sordino) above measures 87-88, and "molto vib" (molto vibrato) above measures 88-89.  
 - **Viola (Vib.):** Measures 85-86: sixteenth-note runs with dynamics *f* and *ff*. Measure 87: *ff* with a slur. Measure 88: *mf* with a slur. Measure 89: *pp* with a slur. Performance instruction: "with pedal" above measures 87-89.  
 - **Trombone (Tbn.):** Measures 85-86: rests. Measure 87: *ff* with a slur. Measure 88: *p* with a slur. Measure 89: *mf* with a slur. Performance instruction: "slide vib" above measures 88-89.  
 - **Bass Clarinet (B. Cl.):** Measures 85-86: rests. Measure 87: *ff* with a slur. Measure 88: *p* with a slur. Measure 89: *p* with a slur. Performance instruction: "slow wide vib." above measures 88-89.  
 - **Other markings:** "Ped." (pedal) under the Viola staff in measures 85-86. "on fundamental F#" above the Trombone staff in measure 87. "M" (Mourning) above the Bass Clarinet staff in measures 88 and 89.

91

Vln. *f* *ff* *f* *mp* *fff* senza vib

Vib. *f* *mp* *fff* place a triangle beater on the bar

Tbn. *p* *mf* *f* *mp* *f* *mp* *fff* speed up and narrow vib. senza vib.

B. Cl. *f* *mp* *fff* senza vib. 7

$\text{♩} = 92$

the gliss should be about a semitone

97 ord.

Vln. *n* *mp* 3 5 3 5 3

Vib.

Tbn.  $\text{B}\flat$  4/4

B. Cl.

Detailed description of the musical score: The score is for a page numbered 23. It features four staves: Violin (Vln.), Vibraphone (Vib.), Trombone (Tbn.), and Bass Clarinet (B. Cl.). The Violin staff is in 4/4 time and starts at measure 97. It begins with a dynamic marking of *n* (pianissimo) and a tempo marking of  $\text{♩} = 92$ . The first measure contains a whole note with a glissando line above it, marked 'ord.'. The second measure starts with a dynamic marking of *mp* (mezzo-piano) and contains a triplet of eighth notes. This is followed by a series of eighth notes with slurs and fingering numbers 3, 5, 3, 5, 3. A time signature change to 3/8 occurs at the start of the third measure. The Violin part continues with a triplet of eighth notes, followed by eighth notes with slurs and fingering numbers 5 and 3. The Vibraphone, Trombone, and Bass Clarinet staves all contain whole rests throughout the entire passage. The Trombone staff is in  $\text{B}\flat$  4/4 time, and the Bass Clarinet staff is in 4/4 time.

100

Vln. *f* *mp* *f*

Vib. *mp* with pedal

Tbn. *mp*

B. Cl. *f* *mp*

5 3 5 3 5

3 5 3

7

7

Detailed description: This musical score page features four staves. The Violin (Vln.) staff is in treble clef, starting at measure 100 with a forte (*f*) dynamic. It contains several triplet markings (3) and quintuplet markings (5). The Viola (Vib.) staff is in treble clef and has a mezzo-piano (*mp*) dynamic with a 'with pedal' instruction and a tremolo effect. The Trombone (Tbn.) staff is in bass clef, starting with a mezzo-piano (*mp*) dynamic and a fermata. The Bass Clarinet (B. Cl.) staff is in treble clef, starting with a forte (*f*) dynamic and containing triplet (3) and quintuplet (5) markings. The dynamics transition from *f* to *mp* across the page.

102

Vln.

Vib.

Tbn.

B. Cl.

*mp*

*f* *mp*

*f*

3 5 3 5 3

104

Vln. *f* *mp*

Vib.

Tbn.

B. Cl. *mp* *f* *mp*

5 3 5 3 5 5 6 6

5 3 5 5 6

7 7

5 5 6

Detailed description: This page of a musical score, numbered 26, contains measures 104 through 107. It features four staves: Violin (Vln.), Vibraphone (Vib.), Trombone (Tbn.), and Bass Clarinet (B. Cl.). The Violin part begins with a forte (*f*) dynamic and a five-measure phrase, followed by a mezzo-piano (*mp*) section with a triplet of eighth notes. The Vibraphone part consists of four chords, each with a five-measure phrase. The Trombone part has a melodic line with a slur and a fermata over the first two measures, and rests in the subsequent measures. The Bass Clarinet part starts with a mezzo-piano (*mp*) dynamic and a five-measure phrase, then moves to forte (*f*) for a five-measure phrase, and finally returns to mezzo-piano (*mp*) for a six-measure phrase. Fingerings (5, 3, 5, 3, 5, 5, 6, 6) are indicated for the Violin and Bass Clarinet parts.

107

Vln. *f* 6 6 *mp* 6

Vib. 1/2 pedal *f* 6 6 6 *mp* *f* 6 6 6 *mp* *f* *mp*

Tbn. rapidly + → ○ → + *f* *mp*

B. Cl. *f* *mp*

Detailed description: This is a page of a musical score for four instruments: Violin (Vln.), Viola (Vib.), Trombone (Tbn.), and Bass Clarinet (B. Cl.). The page number 107 is in the top left. The Violin part starts with a treble clef and a key signature of one sharp (F#). It features a complex melodic line with sixteenth notes and slurs, with dynamic markings of *f*, *mp*, and *f*. The Viola part also has a treble clef and a key signature of one sharp, playing a similar melodic line with sixteenth notes and slurs, with dynamic markings of *f*, *mp*, *f*, and *mp*. A "1/2 pedal" instruction is placed above the first measure. The Trombone part has a bass clef and a key signature of one sharp, playing a sustained note with dynamic markings of *f* and *mp*. Above the staff, there is a performance instruction "rapidly" with a sequence of symbols: a plus sign, an arrow pointing right, an open circle, an arrow pointing right, and another plus sign. The Bass Clarinet part has a treble clef and a key signature of one sharp, playing a sustained note with dynamic markings of *f* and *mp*.



109

Vln.

A single staff for the Violin (Vln.) containing a whole rest, indicating the instrument is silent for this measure.

Vib.

A single staff for the Viola (Vib.) featuring a complex rhythmic pattern of sixteenth notes. The pattern is divided into two measures by a bar line. The first measure contains four groups of sixteenth notes, each marked with a '6' below it. The second measure contains two groups of sixteenth notes, also marked with a '6' below each. Dynamics are indicated by hairpins: *f* (forte) at the start, *mp* (mezzo-piano) in the middle, and *f* again towards the end. A long horizontal line spans the entire staff, likely representing a bowing or breath mark.

Tbn.

A single staff for the Tuba (Tbn.) in bass clef. It begins with a whole note followed by a fermata. The second measure contains two notes: a half note with a sharp sign and a quarter note. Dynamics are *pp* (pianissimo) for the first note and *mp* (mezzo-piano) for the second. Above the staff, the word "rapidly" is written above a sequence of symbols: a plus sign, a right-pointing arrow, a circle, another right-pointing arrow, and a final plus sign.

B. Cl.

A single staff for the Bass Clarinet (B. Cl.) in treble clef. It starts with a whole note, followed by a fermata. The second measure contains a sixteenth-note pattern marked with a '6' below it, followed by a five-note pattern marked with a '5' below it. Dynamics are *mp* (mezzo-piano) for the first part and *f* (forte) for the second. The third measure contains another sixteenth-note pattern marked with a '6' below it, with a dynamic of *mp*.

111

Vln.

Violin staff (Vln.) with treble clef. The staff contains a whole rest in the first measure, followed by a repeat sign. In the second measure, there are two sixteenth-note sixths (marked '6') starting on G4 and A4. The dynamics are marked *mp* and *f* with a hairpin crescendo.

Vib.

Viola staff (Vib.) with alto clef. The staff contains sixteenth-note sixths (marked '6') starting on G3 and A3. The dynamics are marked *f*, *mp*, *f*, *mp*, *f* in the first measure, and *mp*, *f*, *mp*, *f* in the second measure, with hairpin crescendos and decrescendos.

Tbn.

Tuba staff (Tbn.) with bass clef. The staff contains a whole note G2 with a fermata, followed by a repeat sign. The dynamic is marked *n* (natural).

B. Cl.

Bass Clarinet staff (B. Cl.) with treble clef. The staff contains sixteenth-note sixths (marked '6') starting on G3 and A3. The dynamics are marked *f* and *mp* in the first measure, and *p*, *f*, *mp* in the second measure, with hairpin crescendos and decrescendos.

113

Vln.

Violin staff notation. Treble clef, key signature of one sharp (F#). The staff begins with a treble clef, a key signature of one sharp, and a dynamic marking of *mp*. The music consists of sixteenth-note runs. Above the first three measures, the number '6' is written, indicating a sixteenth-note group. The first measure contains a quarter rest followed by a sixteenth-note group. The second and third measures each contain a sixteenth-note group. The fourth measure contains a quarter rest followed by a sixteenth-note group. The fifth and sixth measures each contain a sixteenth-note group. The staff ends with a quarter rest.

Vib.

Viola staff notation. Treble clef, key signature of one sharp (F#). The staff begins with a treble clef, a key signature of one sharp, and a dynamic marking of *mp*. The music consists of sixteenth-note runs. Above the first four measures, the number '6' is written, indicating a sixteenth-note group. The first measure contains a sixteenth-note group. The second, third, and fourth measures each contain a sixteenth-note group. The fifth and sixth measures each contain a sixteenth-note group. The seventh and eighth measures each contain a sixteenth-note group. The ninth and tenth measures each contain a sixteenth-note group. The staff ends with a sixteenth-note group.

Tbn.

Tuba staff notation. Bass clef, key signature of one sharp (F#). The staff begins with a bass clef, a key signature of one sharp, and a dynamic marking of *pp*. The music consists of a single note held for the duration of the staff. Above the note, the text 'slide vib. rapidly' is written, followed by a diagram: a plus sign (+) followed by an arrow pointing right to a circle (o), followed by another arrow pointing right to a plus sign (+). The dynamic marking changes to *mp* towards the end of the staff.

B. Cl.

Bass Clarinet staff notation. Treble clef, key signature of one sharp (F#). The staff begins with a treble clef, a key signature of one sharp, and a dynamic marking of *mp*. The music consists of sixteenth-note runs. Above the first measure, the number '6' is written, indicating a sixteenth-note group. The first measure contains a sixteenth-note group. The second measure contains a sixteenth-note group. The third measure contains a sixteenth-note group. The fourth measure contains a sixteenth-note group. The fifth measure contains a sixteenth-note group. The sixth measure contains a sixteenth-note group. The seventh measure contains a sixteenth-note group. The eighth measure contains a sixteenth-note group. The ninth measure contains a sixteenth-note group. The tenth measure contains a sixteenth-note group. The dynamic marking changes to *p* towards the end of the staff.

115

Vln.

Violin staff with treble clef. The music consists of sixteenth-note patterns. The first four measures are marked with fingerings 6, 6, 5, and 5. The last four measures are marked with fingerings 6, 6, 6, and 6. A long horizontal line with an arrow at the end spans across the top of the staff, indicating a sustained or glissando effect.

Vib.

Viola staff with alto clef. The music consists of sixteenth-note patterns. All eight measures are marked with the fingering 6.

Tbn.

Tuba staff with a 3/4 time signature. It contains a single whole note.

B. Cl.

Bass Clarinet staff with treble clef. The music consists of sixteenth-note patterns. All eight measures are marked with the fingering 5.

117 s.p. → m.s.p. → high bow pressure

Vln.

Violin staff with treble clef. The music consists of a series of sixteenth-note chords. Dynamics range from *s.p.* (pizzicato) to *fff* (fortissimo).

Vib.

Viola staff with treble clef. The music consists of sixteenth-note chords with fingerings '6' indicated above. A trill is marked with 'tr' and a wavy line. Dynamics range from *fff* to *fff*.

Tbn.

Tuba staff with bass clef. The music includes notes with dynamic markings *pp*, *pp*, and *mp*. A 'rapidly' marking is above a note with a '+' sign. A drum part is indicated with 'superali mallet on snare drum with snare' and a note with dynamic *p* leading to *fff*.

B. Cl.

Bass Clarinet staff with treble clef. The music consists of sixteenth-note chords with fingering '5' indicated above. Dynamics range from *fff* to *fff*.

♩=100  
m.s.t.

the gliss should be about a semitone

119

ord.

*n*

*mp*

*3*

*5*

*ppp*

with palm of hand

*pp*  
Ped.

air

○ → + → ○ → + → ○ → + → ○

*p*

*p*

air

*3*

*5*

*p*

Detailed description of the musical score: The score is for measures 119-122. It features four staves: Violin (Vln.), Vibraphone (Vib.), Trombone (Tbn.), and Bass Clarinet (B. Cl.).  
 - **Vln.:** Measure 119: whole rest. Measure 120: half note, dynamic *n*. Measure 121: quarter note, dynamic *mp*, with triplet and quintuplet markings. Measure 122: eighth notes, dynamic *ppp*, with instruction 'with palm of hand'.  
 - **Vib.:** Measure 119: whole rest. Measure 120: whole rest. Measure 121: quarter note, dynamic *pp*, with 'Ped.' marking. Measure 122: eighth notes, dynamic *p*.  
 - **Tbn.:** Measure 119: whole rest. Measure 120: whole rest. Measure 121: whole rest. Measure 122: eighth notes, dynamic *p*, with 'air' marking and a diagram of a zigzag line with circles and plus signs.  
 - **B. Cl.:** Measure 119: whole rest. Measure 120: whole rest. Measure 121: whole rest. Measure 122: eighth notes, dynamic *p*, with 'air' marking and triplet/quintuplet markings.

125

Vln. *ppp* *f* *ppp*

Vib. *ppp* *f* *ppp*  
Ped.

Tbn. *p* *f*

B. Cl. *p* *mf*

colegno  
jete

metal brush

wave metal brushes in the air

hit the mouth piece  
with palm of hand

arco;  
high bow presure;  
like a grain

ord.

ord.

Detailed description of the musical score: The score is for measures 125-128. It features four staves: Violin (Vln.), Vibraphone (Vib.), Trombone (Tbn.), and Bass Clarinet (B. Cl.).  
 - **Violin (Vln.):** Starts with a whole rest in 2/8. At measure 126, it changes to 4/8 and plays a half note G#4 (*ppp*). A line labeled 'colegno jete' extends from this note to a half note G#4 in 2/8 at measure 127. In measure 128, it plays a half note G#4 in 2/4 (*f*).  
 - **Vibraphone (Vib.):** Starts with a whole rest in 2/8. At measure 126, it changes to 4/8 and plays a half note G#4 (*ppp*) with 'metal brush' markings. A line extends to a half note G#4 in 2/8 at measure 127. In measure 128, it plays a half note G#4 in 2/4 (*f*) with 'wave metal brushes in the air' markings. In measure 129, it plays a half note G#4 (*ppp*) with a 'Ped.' marking.  
 - **Trombone (Tbn.):** Starts with a whole rest in 2/8. At measure 126, it changes to 4/8 and plays a half note G#4 (*p*). A line extends to a half note G#4 in 2/8 at measure 127. In measure 128, it plays a half note G#4 in 2/4 (*f*) with a downward arrow.  
 - **Bass Clarinet (B. Cl.):** Starts with a whole rest in 2/8. At measure 126, it changes to 4/8 and plays a half note G#4 (*p*) with 'air' markings. It continues with a half note G#4 in 4/8, a half note G#4 in 4/8, and a half note G#4 in 4/8. In measure 127, it plays a half note G#4 in 2/8. In measure 128, it plays a half note G#4 in 2/4 (*mf*) with 'ord.' markings.  
 - **Tempo/Style:** Changes from 2/8 to 4/8 at measure 126, and to 2/4 at measure 128. Performance instructions include 'arco; high bow presure; like a grain' and 'ord.' (order).

130

Vln.

Vib.

Tbn.

B. Cl.

III  
II

*tr*

*p* *ff* *ff* *p* *fff*

*p* *ff* *p* *fff*

*ff* *p* *fff*

*ff* *p* *fff*

*p* *ff* *ff* *p* *fff*

*p* *ff* *ff* *p* *fff*

*ord.*

*bisb.*



freely;  
as fast as possible  
s.p.

135

Vln. *f* *p* *f* *p* *ff*

Vib. *f* *Red.* *p* *f* *p* *ff*

Tbn. slide vib *f* *p* *f* *p*

B. Cl. *f* *p* *f* *p* *ff*

The image shows a musical score for measures 135 and 136. The score is in 2/4 time and features four staves: Violin (Vln.), Vibraphone (Vib.), Trombone (Tbn.), and Bass Clarinet (B. Cl.).  
- **Violin (Vln.):** Measure 135 starts with a treble clef, a key signature of one flat (Bb), and a dynamic of *f*. The note is sustained through measure 136. In measure 136, the dynamic changes to *p*, then *f*, then *p*, and finally *ff* for a sixteenth-note figure.  
- **Vibraphone (Vib.):** Measure 135 starts with a treble clef, a key signature of two flats (Bb, Eb), and a dynamic of *f*. The note is sustained through measure 136. In measure 136, the dynamic changes to *p*, then *f*, then *p*, and finally *ff* for a sixteenth-note figure. A "Red." (Reduction) bracket is shown below the staff.  
- **Trombone (Tbn.):** Measure 135 starts with a bass clef, a key signature of one flat (Bb), and a dynamic of *f*. The note is sustained through measure 136. In measure 136, the dynamic changes to *p*, then *f*, then *p*. A "slide vib" instruction is written above the staff.  
- **Bass Clarinet (B. Cl.):** Measure 135 starts with a treble clef, a key signature of one flat (Bb), and a dynamic of *f*. The note is sustained through measure 136. In measure 136, the dynamic changes to *p*, then *f*, then *p*, and finally *ff* for a sixteenth-note figure.  
- **Measure 136:** All staves end with a double bar line and a measure rest for 5/16 of the measure.

139

Vln.  $\frac{5}{16}$   $\frac{2}{4}$  *p* *ff* *f mp subito*

Vib.  $\frac{5}{16}$   $\frac{2}{4}$  *p* *ff* *f mp subito* Ped.

Tbn.  $\frac{5}{16}$   $\frac{2}{4}$  *f mp subito* *pp*

B. Cl.  $\frac{5}{16}$   $\frac{2}{4}$  *p* *ff* *f mp subito* *pp*

Detailed description: This is a page of a musical score for four instruments: Violin (Vln.), Vibraphone (Vib.), Trombone (Tbn.), and Bass Clarinet (B. Cl.). The score is divided into two measures by a double bar line. The first measure is in 5/16 time, and the second measure is in 2/4 time. The Vln. part starts with a melodic line in 5/16 time, marked *p* and *ff*, with a crescendo hairpin. It then changes to 2/4 time, marked *f mp subito*, with a long note that decays. The Vib. part has a similar melodic line in 5/16 time, marked *p* and *ff*, with a *Ped.* (pedal) marking. It then changes to 2/4 time, marked *f mp subito*, with a long note that decays. The Tbn. part is mostly silent in the first measure, then plays a long note in 2/4 time, marked *f mp subito*, which decays to *pp*. The B. Cl. part has a melodic line in 5/16 time, marked *p* and *ff*, then changes to 2/4 time, marked *f mp subito*, with a long note that decays to *pp*. There are also some performance markings like a wavy line at the top and a circle with an arrow pointing to a plus sign in the Tbn. part.

III  
II

*tr* ~~~~~

Vln. ord.

Vib. senza pedal

Tbn. Ped.

B. Cl. a soft multiphonic

*mp* *ff*

*pp* *mp*

*ff* *ff*

*ff* *fff*

*ff* *fff*

*ff* *fff*

*tr* ~~~~~

150

S.p.

Vln. *mp*

Vib. *mp*  
Ped.

Tbn. *mp* + slide vib *pp*

B. Cl. *mp* *pp* *pp*

(tr) ~~~~~ damp strings

Vln. 155  $\frac{1}{4}$   $\frac{5}{4}$   $\frac{2}{4}$   $\frac{5}{16}$   $\frac{8}{8}$   
*ff* *mp* *p* *f*

Vib.  $\frac{1}{4}$   $\frac{5}{4}$   $\frac{2}{4}$   $\frac{5}{16}$   $\frac{8}{8}$   
*ff* *mp* *mp* *p* *f*  
 Ped. ~~~~~

Tbn.  $\frac{1}{4}$   $\frac{5}{4}$   $\frac{2}{4}$   $\frac{5}{16}$   $\frac{8}{8}$   
*ff* *mp* *p* *f*

B. Cl. bisb. ~~~~~  $\frac{1}{4}$   $\frac{5}{4}$   $\frac{2}{4}$   $\frac{5}{16}$   $\frac{8}{8}$   
*mp* *ff* *mp* *p* *mf* *p* *mf* *p* *f*

Detailed description: This is a page of a musical score for four instruments: Violin (Vln.), Vibraphone (Vib.), Trombone (Tbn.), and Bass Clarinet (B. Cl.). The page number is 40. The score is divided into four measures. Measure 1 (1/4 time) features a trill (tr) in the Violin part and a 'bisb.' (biscando) effect in the Bass Clarinet. Measure 2 (5/4 time) has a fortissimo (ff) dynamic for all instruments. Measure 3 (2/4 time) has a mezzo-piano (mp) dynamic. Measure 4 (5/16 and 8/8 time) features a crescendo from piano (p) to forte (f) in the Violin and Trombone, and a dynamic sequence of p, mf, p, mf, p, f in the Bass Clarinet. The Vibraphone part includes a 'Ped.' (pedal) instruction. The Violin part includes a 'damp strings' instruction. The Trombone part includes a '+' (plus) instruction. The Bass Clarinet part includes a 'bisb.' instruction.

161 *tr*

Vln. *IV*

Vib. *senza pedal*

Tbn.

B. Cl.

*f* *ff* *f* *mp* *f*

*6* *6* *6* *6* *6*

*5* *6* *6* *3* *6* *6* *6*

*Ped.*

*1/2 pedal*

*rapidly*

*f*

165

Vln. *f* *ff*

Vib. *mp* *f* *ff*  
Ped.

Tbn. *mp* *mf* *ff* *mf* *ff*  
*p* *mf* *pp* *p* *pp* *p* *p* *mp*

B. Cl. *mp* *f* *ff*

II  
III

m.s.t. freely and rapidly

III I

on the string;  
rapidly with irregular rhythm

169 ord. → molto s.p. → high bow pressure

Vln. *ff* *fff* *p*

Vib. *ff* *p* *ff*

Tbn. *p* *mp* *mf* *f* *f* *f* *ff* *ff* *fff* *p* *ff*

B. Cl. *p* *ff* *p* *fff* *p* *ff*

senza pedal 3

5

machinegun tonguing; rapidly

+ → ○ → +



44

Vln.

174

molto vib

*ff*

Vib.

Ped.

5

on fundamental F

Tbn.

harmonic gliss

B. Cl.

The image shows a musical score for four instruments: Violin (Vln.), Vibraphone (Vib.), Trombone (Tbn.), and Bass Clarinet (B. Cl.). The score is divided into four measures. The Violin part starts with a double bar line and a fermata, then continues with a melodic line marked 'ff' and 'molto vib'. The Vibraphone part has a complex rhythmic pattern with a 'Ped.' marking. The Trombone part has a melodic line with a '5' marking. The Bass Clarinet part has a 'harmonic gliss' marking.

179 *s.t* **7** **7** **7** **7** **7** **7**

Vln. *pp*

Vib. *senza pedal* *pp*

Tbn. *pp*

B. Cl. *pp* **5** **5** **5** **5** **5** **5**

181

Vln. 7

Vib.

Tbn.

B. Cl. 5

on the string with pedal

+

Detailed description: This is a page of a musical score for four instruments: Violin (Vln.), Vibraphone (Vib.), Trombone (Tbn.), and Bass Clarinet (B. Cl.). The page number 46 is in the top left. The measure number 181 is at the top left of the Vln. staff. The Vln. part features a series of six measures with a seven-measure slur (marked '7') over a sequence of eighth notes. The Vib. part consists of a single continuous line of notes across the entire page. The Tbn. part has a few notes in the first measure, followed by a long rest, and then a few notes at the end of the page. The B. Cl. part has a series of six measures with a five-measure slur (marked '5') over a sequence of eighth notes. Performance instructions include 'on the string with pedal' for the Vib. and a '+' sign for the Tbn. at the end of the page.

184

Vln. **7**

Vib.

Tbn.

B. Cl. **5**

189

Vln. *p* *gliss* *gliss*

Vib. *p* ord.

Tbn. *p*

B. Cl. *p* 5

The score is for measures 189-192. It features four staves: Violin (Vln.), Vibraphone (Vib.), Trombone (Tbn.), and Bass Clarinet (B. Cl.). The key signature has one sharp (F#) and the time signature is 4/8. The Violin part starts with a piano (*p*) dynamic and includes two measures with a '7' above the staff, indicating a seven-measure rest. A glissando (*gliss*) is marked above the staff, starting at the beginning of measure 191 and ending at the end of measure 192. The Vibraphone part also starts piano (*p*) and includes a section marked 'ord.' (ordered) above the staff. The Trombone part starts piano (*p*) and includes a section marked 'ord.' above the staff. The Bass Clarinet part starts piano (*p*) and includes a section marked '5' above the staff. The score concludes at measure 192 with a 6/4 time signature change.

high bow pressure → normal bow pressure

m.s.p

192

Vln.

tr

*ff* *mp* *p*

Vib.

on the string

*ff* *mp*

snare drum  
superball mallet

*pp* < *ff*

rapidly  
+ → ○ → +  
slide vib.

rapidly  
+ → ○ → +  
slide vib.

rapidly  
+ → ○ → +  
slide vib.

rapidly  
+ → ○ → +  
slide vib.

Tbn.

*ff* *pp* *mf* *pp*

very grainy  
and distonic multiphonic

B. Cl.

*ff* *p*

196

(tr)

Vln.

Vib.

Tbn.

B. Cl.

*ppp*

*ff*

*p* *fff*

*p* *fff*

Detailed description: This is a page of a musical score, page 50. It features four staves: Violin (Vln.), Vibraphone (Vib.), Trombone (Tbn.), and Bass Clarinet (B. Cl.). The Vln. staff begins at measure 196 with a trill (tr) and a hairpin crescendo that extends across the entire page. The Vib. staff has a thick black bar covering the first two measures, followed by rests and a dynamic marking of *ppp*. The Tbn. and B. Cl. staves have rests for the first four measures, followed by a dynamic marking of *p* and a hairpin crescendo to *fff* in the final measure. The Vib. staff has a dynamic marking of *ff* in the final measure. The Tbn. staff has a performance instruction: a plus sign followed by an arrow pointing to a circle. The time signature is 2/4, and the key signature has one sharp (F#).