

Lawrence Berkeley National Laboratory

LBL Publications

Title

Probing atom dynamics of excited Co-Mo-S nanocrystals in 3D

Permalink

<https://escholarship.org/uc/item/2rq51400>

Journal

Nature Communications, 12(1)

ISSN

2041-1723

Authors

Chen, Fu-Rong

Van Dyck, Dirk

Kisielowski, Christian

et al.

Publication Date






2021-08-01

DOI


10.1038/s41467-021-24857-4

Peer reviewed

Probing atom dynamics of excited Co-Mo-S nanocrystals in 3D

Fu-Rong Chen¹, Dirk Van Dyck², Christian Kisielowski ³, Lars P. Hansen ⁴, Bastian Barton ³ & Stig Helveg ^{4,5} 

Advances in electron microscopy have enabled visualizations of the three-dimensional (3D) atom arrangements in nano-scale objects. The observations are, however, prone to electron-beam-induced object alterations, so tracking of single atoms in space and time becomes key to unravel inherent structures and properties. Here, we introduce an analytical approach to quantitatively account for atom dynamics in 3D atomic-resolution imaging. The approach is showcased for a Co-Mo-S nanocrystal by analysis of time-resolved in-line holograms achieving ~ 1.5 Å resolution in 3D. The analysis reveals a decay of phase image contrast towards the nanocrystal edges and meta-stable edge motifs with crystallographic dependence. These findings are explained by beam-stimulated vibrations that exceed Debye-Waller factors and cause chemical transformations at catalytically relevant edges. This ability to simultaneously probe atom vibrations and displacements enables a recovery of the pristine Co-Mo-S structure and establishes, in turn, a foundation to understand heterogeneous chemical functionality of nanostructures, surfaces and molecules.

¹Department of Materials Science and Engineering, City University of Hong Kong, Kowloon Tong, Hong Kong, SAR. ²EMAT, University of Antwerp, Antwerp, Belgium. ³The Molecular Foundry, Lawrence Berkeley National Laboratory, Berkeley, CA, USA. ⁴Haldor Topsoe A/S, Haldor Topsøes Allé 1, Kgs. Lyngby, Denmark. ⁵Center for Visualizing Catalytic Processes (VISION), Department of Physics, Technical University of Denmark, Kgs. Lyngby, Denmark. email: stig@fysik.dtu.dk

It is well understood that material properties are encoded in the choice of elements and their three-dimensional arrangements¹. This knowledge has driven improvements of transmission electron microscopes, which have reached an ultimate spatial resolution around 50 pm in both focused- and broad-beam modes and provided capabilities for rendering atom positions in three spatial dimensions (3D) by processing images using a variety of mathematical reconstruction methods^{2–8}. Traditionally, all reconstruction schemes consider the object as a static structure, which is modulated by a uniform thermal blur described by classical Debye–Waller (DW) factors. The 3D atomic structure determination relies currently on electron microscopy conducted at high electron doses corresponding to $10^5 \text{ e}^-/\text{\AA}^2$ and $500 \text{ e}^-/\text{\AA}^2$ to detect a single C or Au atom, respectively, in broad-beam mode⁹. Under such illumination conditions, excitations can cause displacements of atoms from their equilibrium positions that by far exceed the thermal vibrations predicted by DW factors¹⁰ (Fig. 1a).

In fact, nano-scale objects have functional properties that strongly depend on the surface atoms. The surface atoms have reduced coordination, which consequently makes them more prone—compared to bulk atoms—to alterations induced by any stimuli, including gas/liquid environments, heat, electromagnetic fields as well as electron beams^{11–16}. 3D atomic-resolution images have uncovered atom dynamics under an assumed uniform excitation^{11,12} and 2D projected atomic-resolution images have revealed atom displacements at nanoparticle surfaces¹⁵, even with a site-dependency¹⁶. Thus, the

dynamic behavior of nano-scale objects is generally modulated in space and time and expected to heterogenize the electron microscopy image intensities and contrast blurring. To account for such image variations, 3D atomic-resolution electron microscopy is needed with a larger temporal resolution ranging from seconds^{11,12}, characteristic of chemical kinetics, toward femto-seconds, characteristic of electronic processes¹⁷. Advancing such 3D atomic-resolution imaging with time-resolution meets significant challenges including the development of suitable tools to analyze the dynamic behavior of atoms at any chosen timescale¹⁰.

Here, we expand existing experimental and theoretical capabilities by first introducing an analytical approach to extract all spatiotemporal information encoded into transmission electron microscopy (TEM) data up to the limits of the counting statistics. By reconstruction of the electron wave exiting the specimen, sensitivity to the electrostatic potential of single atoms is achieved despite using reduced electron dose rates and doses. Thus, the approach becomes generally applicable for atomic-resolution electron microscopy of nano-scale objects and electron-beam-sensitive materials. Subsequently, the approach is merited by the dynamic analysis of Co–Mo–S nanocrystals in 3D.

Results and discussion

Analytical model for the exit wave of a dynamic crystalline object. The most informative fingerprint of the atomic structure is contained in the electron exit wave. It can be reconstructed by

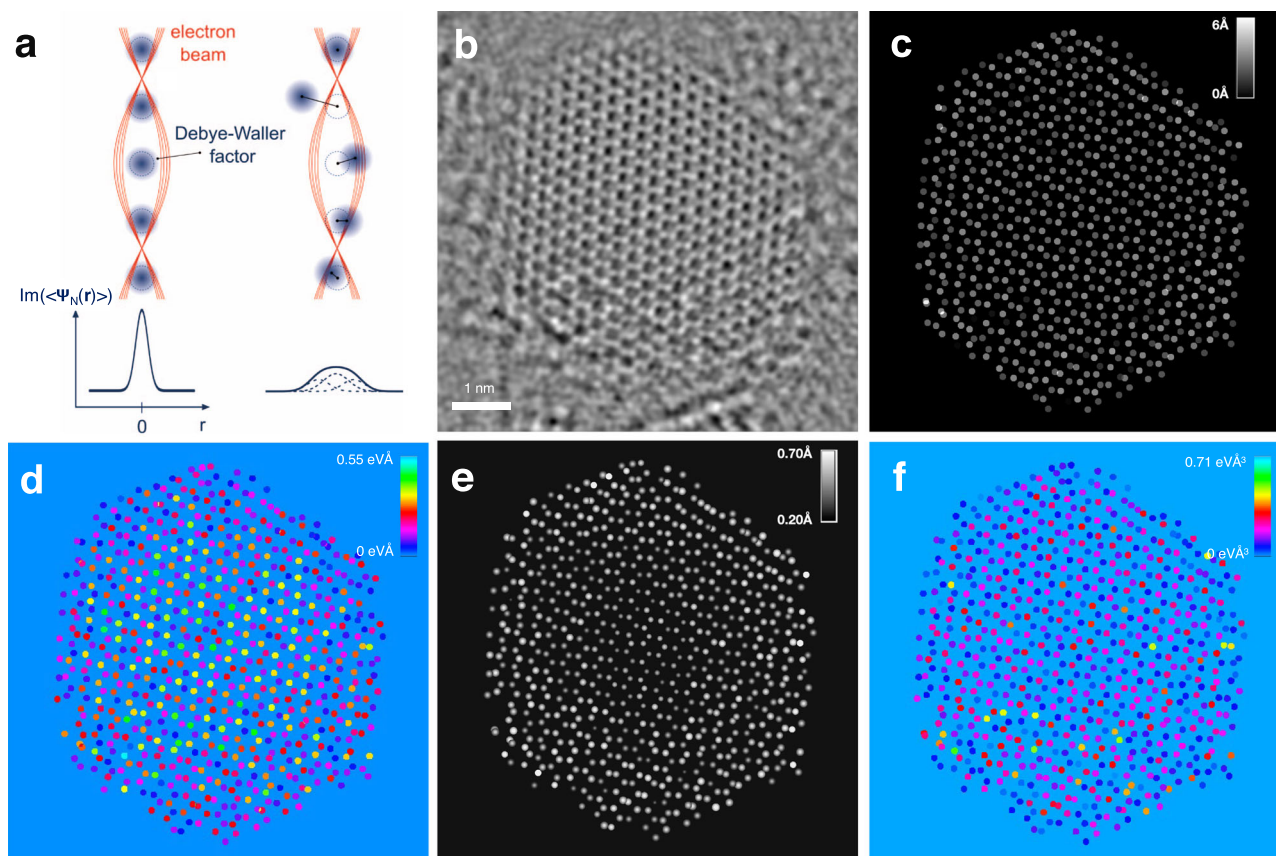


Fig. 1 Dynamic analysis of an exit wave. **a** Illustration of the generic model Eq. (1) of the exit wave imaginary part $\text{Im}(\langle \Psi_N(\mathbf{r}) \rangle)$ from a static column of atoms, modulated by DW factors, and a dynamic column with atom excursions exceeding the DW value. **b–f** Benchmark application of model Eq. (1) to the analysis of a Co–Mo–S nanocrystal. **b** The imaginary part of the EW1 of a Co–Mo–S nanocrystal viewed in $\langle 001 \rangle$ orientation. **c** Height map showing the atomic column positions along the beam direction with respect to a common image plane as a function of the position in the image plane. **d** $V/(\pi R^2)$ map showing the projected atomic column potentials scaled by the averaged area of the atoms. **e** R_{av} map showing the spread radius of the atomic columns. **f** V map showing the integrated potential of the atomic columns.

either off-axis¹⁸ or in-line holography¹⁹. For the latter, a focal image series is recorded of the specimen using the TEM broad-beam mode, which in turn offers the largest signal with the fewest scattered electrons. The exit wave of a thin object in zone-axis orientation is modeled by the channeling theory^{20,21}, which describes how electrons are trapped in atomic columns parallel to the electron beam. The exit wave of an atomic column can be expressed in a first-order approximation as follows (see Supplementary Methods):

$$\langle \Psi_N(\mathbf{r}) \rangle = i\alpha Z a^2 (V_{\text{eff}}(\mathbf{r})) = i\alpha Z a^2 (V_p(\mathbf{r}) \otimes b(\mathbf{r}) \otimes P(\mathbf{r})) \quad (1)$$

Here, \mathbf{r} is the image plane vector, $\langle \rangle$ time averaging, α a constant for all atoms, Z the projected atomic number of the column, a the atom radius, $V_{\text{eff}}(\mathbf{r})$ the effective potential, which is composed of $V_p(\mathbf{r})$ the projected electrostatic potential of the specimen, $b(\mathbf{r})$ the normalized thermal distribution of atom positions, and $P(\mathbf{r})$ the normalized point-spread function of the microscope covering incoherent aberrations remaining after exit wave restoration, and \otimes the convolution operator. The above expression for the exit wave is normalized to the vacuum wave outside the object. Moreover, the channeling model is applicable to samples as thin as single atoms^{20,21} and the expression Eq. 1 is accurate to better than 16% for thin samples with a projected $Z < 200$ for all the atoms in an atomic column (Supplementary Methods). Since $V_p(\mathbf{r})$, $b(\mathbf{r})$ and $P(\mathbf{r})$ are normalized functions that all peak at the equilibrium column position $r = 0$, one finds

$$\int \text{Im}(\langle \Psi_N(\mathbf{r}) \rangle) d\mathbf{r} = V \text{ with } V = \alpha Z a^2 \quad (2)$$

with V being the integrated exit wave imaginary part of the single-column (in units of $\text{eV} \text{ \AA}^3$). Furthermore, $\text{Im}(\langle \Psi_N(\mathbf{r}) \rangle)$ peaks at the atomic column positions (Fig. 1a) and has an integral proportional to the total Z value of the atoms in the column. In general, the intensity profile Eq. (1) is set by the elements, their location and their dynamic behavior as well as by the microscope parameters. Thus, in case of correction for coherent image aberrations, the exit wave intensity will be blurred by the electron scattering cross sections, atom vibrations and incoherent lens aberrations. The blur can result in intensity overlap among neighboring atomic columns in the exit wave, which can hamper the assignment of image pixels to the proper atomic column (Fig. 1a). To improve the accuracy of determining V , the full set of pixels that can unambiguously be associated with an atomic column is therefore modeled by a Gaussian blurring function (see Supplementary Methods), i.e.:

$$\text{Im}(\langle \Psi_N(\mathbf{r}) \rangle) = V' \exp(-r^2/R^2) \quad (3)$$

where V' (in units $\text{eV} \text{ \AA}$) equals $V/(\pi R^2)$ and is the projected potential scaled by the averaged area covered by the smeared atoms, and R is the radially symmetric spread radius describing the exit wave blurring, i.e.:

$$R^2 = R_s^2 + R_v^2 + R_a^2 \quad (4)$$

with R_s , R_v , and R_a corresponding to the blurring radius of electron scattering cross sections (s), atom vibrations (v), and incoherent lens aberrations (a), respectively. Thus, the analytical approach extends the static channeling theory^{20,21} of the exit wave by including spatiotemporal dynamic behavior of the atoms described by just two physical object parameters, V' and R . Specifically, the model includes unrestricted vibrational blur, R_v , that can exhibit spatial and temporal dependency and that can exceed usual DW factors depending on the detailed balance between electron-stimulated excitations and relaxations of the object under electron illumination. Importantly, the integrated value V is more robust with regard to atom vibrations as compared to the

peak value V' , which earlier 3D atomic-resolution analysis methods relied on.

Imaging atom dynamics of a Co–Mo–S nanocrystal in 3D. The analytical model is applicable to analyzing exit waves of any 3D nanomaterial. As an ideal benchmark system, the present analysis focuses on single-layer MoS_2 nanocrystals with edge-attached Co atoms on a graphitic support. In $\langle 001 \rangle$ orientation, the MoS_2 basal plane exposes of a uniform pattern of one Mo (1Mo) and two S (2S) atomic columns, which facilitates an unambiguous distinction between atom type and occupancy as well as three-dimensional positions. Moreover, the (001) basal plane is terminated by distinctly different low-indexed $\{100\}$ edges with unique catalytic properties²². The one or two atom-wide edge structures require single-atom-sensitive TEM for a detailed examination^{23–25}. However, the reduced coordination makes the edges prone to alterations at cumulative electron doses around $4 \times 10^5 \text{ e}^- \text{ \AA}^{-2}$ delivered at rates of $5 \times 10^7 \text{ e}^- \text{ \AA}^{-2} \text{ s}^{-1}$ in the focused-beam mode^{26,27} or $5 \times 10^4 \text{ e}^- \text{ \AA}^{-2}$ and $300 \text{ e}^- \text{ \AA}^{-2} \text{ s}^{-1}$ in the broad-beam mode¹⁹. To monitor such dynamic edge structures, the Co–Mo–S nanocrystals were examined using the TEAM 0.5 transmission electron microscope¹⁹. The microscope was operated with a primary electron energy of 50 keV in broad-beam mode with an estimated $\sim 1.4 \text{ \AA}$ information limit, which suffices to resolve the projected Mo–S dumbbell distance of 1.8 \AA . The low electron energy suppresses a knock-on displacement of S and Mo atoms from the basal plane and enhances inelastic scattering contributions (“Methods”)^{28–30}. The electron beam therefore excites atoms in the nanocrystal with a dynamic response that is expected to depend intimately on the electron dose rate^{30–32}. Thus, using low electron dose rates of ca. 89 and $290 \text{ e}^- \text{ \AA}^{-2} \text{ s}^{-1}$, noise-dominated images are recorded in focal series corresponding to a total dose of ca. 3560 and $6380 \text{ e}^- \text{ \AA}^{-2}$, respectively, and with sufficient contrast to restore five successive exit waves of a Co–Mo–S nanocrystal in $\langle 001 \rangle$ orientation (“Methods”, Supplementary Figs. 1, 2).

The exit waves reveal that the Co–Mo–S nanocrystal spans a uniform single-layer MoS_2 plane consisting of hexagonally arranged dumbbells including 1Mo and 2S atomic columns (Fig. 1b and Supplementary Figs. 1, 2)¹⁹. Their exact lateral positions in the $\text{Im}(\langle \Psi_N(\mathbf{r}) \rangle)$ image are determined by fitting a Gaussian function to each peak with sub-pixel precision, whereas their locations along the beam direction are measured by a propagation of intensities followed by a refinement using the Big-Bang scheme^{5,7} (“Methods”). These methods enable the column heights to be determined with high precision. In fact, Fig. 1c and Supplementary Fig. 3 show the atomic column positions along the beam direction and reveal repetitive measurements of the distinct heights within the metal (Mo and edge Co) and S sub-lattices at separations around 1.5 \AA consistent with the single-layer of the established 2H- MoS_2 crystal structure. Thus, the atomic column positions are now measured better than $\sim 1.5 \text{ \AA}$ in 3D in spite of using single projections only. Moreover, the exit wave values span an almost vertical line in the complex Argand plot (Supplementary Fig. 4) justifying the thin sample approximation (Eqs. 1–3 and Supplementary Methods).

To quantify V' and R , the column intensity profiles are fitted by Eq. 3 (“Methods”). The parameters are presented in maps to display their spatial heterogeneity (Fig. 1d, e). Remarkably, the V' values tend to decrease from the center toward the edge of the nanocrystal (Fig. 1d and Supplementary Fig. 5). Unfortunately, the decrease by 40–50% is sufficiently large to compromise the chemical information encoded in the potential. Moreover, R is represented by the average radius R_{av} of the atomic column (Eq. 4 and “Methods”). The R_{av} is about 50 pm in the bulk of the nanocrystal and increases

towards the edge by another ~ 10 pm (Fig. 1e and Supplementary Fig. 6a). With an atomic potential radius $R_s \sim 30$ pm¹⁰, a vibrational blur in the bulk reaches, according to Eq. 4, up to $R_v \sim 40$ pm that exceeds typical DW factors (~ 8 pm at room temperature) under the chosen illumination conditions. This column broadening reflects the anisotropy of the crystal structure (Supplementary Fig. 6), which makes it distinctly different from any optical instability of the electromagnetic lenses (R_d) that is unrelated to sample properties and affect the entire field of view uniformly³³. Moreover, the broadening also leads to intensity overlap of neighboring columns (Supplementary Fig. 7), which explains that fitting of Eq. 3 is truncated at larger r (“Methods”, Supplementary Fig. 7). The edge blurring differs from findings in previous 3D atomic-resolution imaging studies^{2–8} and must clearly be addressed to enable a stoichiometric determination in 3D atomic-resolution electron microscopy in general.

As atom vibrations occur on a timescale considerably faster than the second-long image acquisitions, their contrast fingerprint will be encoded in the phase reduction and image blur (Fig. 1a). Reduction of phase intensity has previously been attributed to electron-beam-induced phonon excitation of the object that temporarily stabilize atom excursions exceeding Debye–Waller factors during data acquisitions^{10,34,35}. Such a thermalization of phonon excitations may also account for the present image blur. The atom displacements appear as a collective phenomenon with a marked site-dependency affecting the edge regions most dramatically as the enhanced R_{av} values span the three or four outermost atomic rows. Indeed, excitation of atom displacements is expected to be more pronounced at edges due to the reduced atom coordination compared to the bulk¹⁴. To make R_v directly quantifiable calls for phase contrast microscopes of extraordinary stability and resolution capable of tackling the significant data scatter in V' and R_{av} (Supplementary Fig. 5 and 6).

The ability to take into account locally varying excitation strengthens a stoichiometric interpretation of the atomic columns even in the presence of the vibrational column blur. The enhanced atom vibrations (R_v) around the equilibrium sites (Fig. 1a) can be corrected for by taking advantage of the radially inverse relationship of R_{av} and V' . The stoichiometrically relevant scattering potentials V are suitably deduced by multiplying V' by πR_{av}^2 and reveal a uniform contrast pattern consistent with the dumbbell motif of 1Mo–2S columns across the bulk part of the MoS₂(001) basal plane (Fig. 1f).

The detailed stoichiometric interpretation of the V map for all exit waves relies on Eq. 2 and the corresponding phase histograms

that are converted by $\alpha = 1.97 \pm 0.12$ eV Å (Fig. 2a and Supplementary Fig. 8). The histograms reveal four distinct distributions, two of which are associated with the metal and sulfur sub-lattices, respectively. The distributions are therefore attributed to 1S, 2S, 1Mo and 1Co atomic columns. This interpretation is confirmed by the linear Z -dependence of the average V value divided by the square of the atom radius, e.g. V/a^2 (Fig. 2b), and rationalized by a simulation of the exit wave from a single-layer MoS₂ nanocrystal including element-specific DW factors of 30 Å² for Mo and 60 Å² for S, respectively (Supplementary Fig. 9). In fact, the linear Z -dependence of V/a^2 is also consistent with our previous static interpretation that the phase value θ (in rad) associated with the intensity distribution scales with the mass rule $\theta = 0.002 M$, where M ($= 2Z$) is the mass of an atomic column⁷. In the past, however, a $Z^{2/3}$ -dependence of the phase values was demonstrated, relying solely on the maximum of the atomic column intensity distribution³⁶. Likewise, fitting of the average V/a^2 with a $Z^{2/3}$ -dependence in Fig. 2b predicts a potential of 13.13 eV Å³, consistent with the Rydberg energy 13.61 eV for hydrogen atoms ($Z = 1$). Thus, a stronger localization of the exit wave close to atomic nuclei causes the established non-linearity of the scattering potential with Z but remains insufficient to characterize the element dependence of phase-contrast measurements for nano-scale objects with spatially varying vibrational blur. Moreover, the standard deviation of the V distributions is about 1/4 of the distance between the 1Mo and 2S peaks, corresponding to $Z = 42$ and 32 , respectively (Fig. 2a and Supplementary Table 1). Thus, the present approach achieves an element differentiation of $\delta Z = 1/4 * (42 - 32) = 2.5$ at 50 keV.

Clearly the V distributions of 1Mo and one Co (1Co) atomic columns in the metal sub-lattice and of 2S and one S (1S) atomic columns in the S sub-lattice overlap and reduce the accuracy of the stoichiometric assignments (Fig. 2a and Supplementary Fig. 8). The distributions have peak positions and standard deviations (σ) as listed in Supplementary Table 1. For all exit waves, the peaks associated with 1Mo, 1Co, and 2S are distinguishable. The peak-to-peak separations of 1Mo–2S ($x_{0,1Mo} - x_{0,2S}$) and 1Mo–1Co ($x_{0,1Mo} - x_{0,1Co}$) are greater than the sum of their corresponding standard deviations σ_{1Mo} , σ_{1Co} , σ_{2S} , and σ_{1S} . For instance, for exit wave EW1, the separations of 1Mo–1Co and 1Mo–2S are 120.2 eV Å³ and 114.24 eV Å³, while the $(\sigma_{1Mo} + \sigma_{1Co}) = 71.95$ eV Å³, and $(\sigma_{1Mo} + \sigma_{2S}) = 73.32$ eV Å³, respectively. In contrast, for all exit waves, the peak-to-peak separation of 2S–1S ($x_{0,2S} - x_{0,1S}$) is smaller than the sum of their corresponding standard deviations

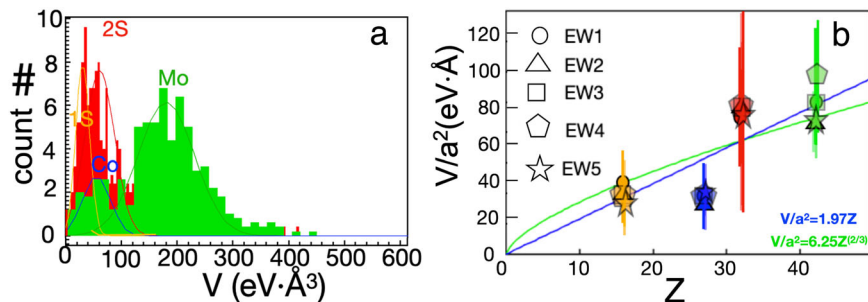


Fig. 2 Stoichiometric interpretation of the Co-Mo-S exit wave. **a** Histograms of V values obtained from the metal and sulfur sub-lattice, marked by green and red, respectively, in the V map (Fig. 1f). The histogram peaks are assigned to 1Mo, 1Co, 2S and 1S, respectively. The histogram peaks are fitted by Gaussian functions (superimposed) having peak positions and standard deviations as listed in Supplementary Table 1. **b** The projected potential (V) scaled by the atomic area (a^2) is plotted versus the assigned projected atomic number of the column (Z). The V/a^2 values are obtained from the peak positions and standard deviations of the Gaussian fits to the V histograms for each exit wave (Supplementary Table 1) and from a being 145 , 135 , and 110 pm for Mo, Co, and S, respectively. The data is best fitted by $V/a^2 = \alpha_1 Z$ with $\alpha_1 = 1.97 \pm 0.12$ eV Å (blue line) and $V/a^2 = \alpha_2 Z^{2/3}$ with $\alpha_2 = 6.25 \pm 0.15$ eV Å (green line), respectively. Moreover, the $Z^{2/3}$ -dependency corresponds to the potential $V = \alpha_3 Z^{2/3}$ with $\alpha_3 = a^2 \alpha_2 = 13.13 \pm 0.32$ eV Å³, obtained using $a = 145$ pm.

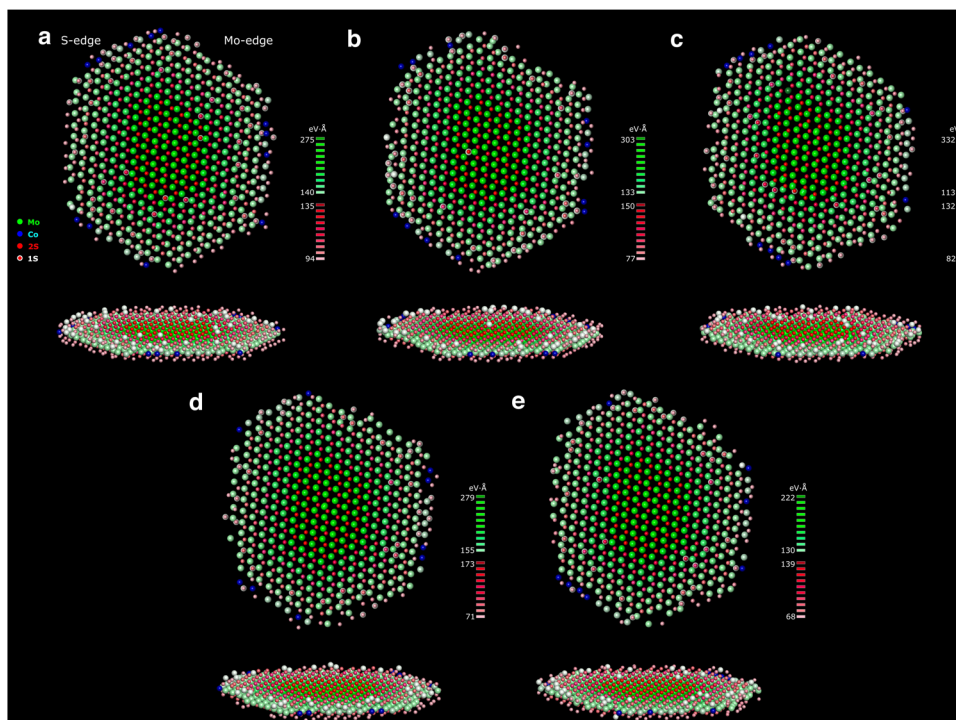


Fig. 3 3D atom-dynamic maps of the Co-Mo-S nanocrystal. **a–e** The time-series of reconstructed 3D atomic-resolution images generated for the successive exit waves shown in the Supplementary Fig. 2. The 3D images depict the atoms with a color reflecting the stoichiometry of each atomic column and a color modulation in accordance with the V' values (Fig. 1d). Specifically, 1Mo is denoted by green dots, 1Co by blue dots, 2S columns by red dots, 1S columns by red dots over white dots and S vacancies by white dots. The corresponding exit waves are obtained from image acquisitions commencing at 153 s, 378 s, 423 s, 574 s, and 624 s, relative to time $t = 0$ s when the electron beam was switched on (Supplementary Fig. 2).

σ_{2S} and σ_{1S} . As an example, for EW1, the separation of 2S–1S is $28.98 \text{ eV } \text{Å}^3$, and $(\sigma_{1S} + \sigma_{2S}) = 37.51 \text{ eV } \text{Å}^3$, respectively. Thus, the intersection of the Gaussian functions fitted to the V histograms must be considered in order to facilitate the stoichiometric assignment of the atomic columns. For the metal sub-lattice, columns are assigned to 1Mo or 1Co for V values greater or smaller than the intersection of Mo and Co Gaussian functions. Likewise, the same assignment is applied for the 2S and 1S columns in the S sub-lattice. For the metal sub-lattice, the Mo and Co Gaussian peaks are well-separated (Supplementary Fig. 8) and complementary electron energy loss spectroscopy studies have assigned Co atoms uniquely to sites at the S-edge²⁷. For the sulfur sub-lattice, the overlap of the Gaussian peaks is more pronounced. Thus, the present stoichiometric assignment of the metal sub-lattice has a high confidence as compared to the assignment in the S sub-lattice under the present image acquisition conditions. The accuracy of the stoichiometric assignment to the metal sites (Mo and Co) and S sites is characterized by δ , which is defined as the change in the number of Co or 1S atoms (Δn) upon shifting the peak value V associated with Co or 1S by a small amount $\pm \Delta V$, i.e. $\delta = \Delta n / \Delta V$. The variation in the peak position of Co or 1S in the histogram is equivalent to the shift of the intersection of the Mo and 2S Gaussians. In general, an error of $\Delta V = 10 \text{ eV } \text{Å}^3$ can give rise to the variation of one Co atom at the metal edge sites, corresponding to $\delta \sim 0.1 \text{ eV}^{-1} \text{Å}^{-3}$ for assignment of Co to the edge in the metal sites. For the S sub-lattice, the assignment of the 1S and 2S is expected to sensitively depend on the peak positions and the standard deviations, as the sum of standard deviation exceeds the separation of 2S and 1S Gaussian peaks. In general, an error of $\Delta V = 1 \text{ eV } \text{Å}^3$ can cause a variation of 1 to 5S vacancies (1S atomic columns) corresponding to $\delta \sim 1\text{--}5 \text{ eV}^{-1} \text{Å}^{-3}$.

Moreover, distributions of measurements in e.g. Supplementary Fig. 3, 4, and 8 contain a minority of outlier values that do not affect the overall conclusions of the present analysis and hence are not analyzed further herein.

Based on this type of analysis, 3D atomic-resolution images of the nanocrystal can be generated from the successive exit waves (Fig. 3). Specifically, each 3D image represents the atomic columns at their 3D locations with a color reflecting the element content and a color modulation reflecting the image blur (V'). The corresponding time-resolution of the successive 3D images is on the scale of 10–100 s, as the exit waves are obtained from image acquisitions commencing at 153 s, 378 s, 423 s, 574 s, and 624 s, relative to time $t = 0$ s when the electron beam was switched on (Supplementary Fig. 2). Moreover, Fig. 3 shows successive 3D atomic-resolved images of the same MoS_2 nanocrystal that remains flat (Fig. 1c, Supplementary Fig. 3) and rotates and tilts by less than ca. 1° during the recording time, which is insufficient to affect the analysis (Supplementary Fig. 10). Thus, the successive 3D atomic-resolution images become a dynamic representation of atoms, reflecting the vibrational heterogeneity within each image and atom displacements among successive images.

Resolving atom-dynamic heterogeneity across the Co-Mo-S nanocrystal in 3D. The 3D atomic-resolution images reveal that the MoS_2 nanocrystal is hexagonally shaped and terminated by (100) Mo- and (-100) S-edges with promoting Co atoms exclusively attached to the S-edges, consistent with Ref. 27. With increasing illumination time, the edges expose a multitude of different motifs with short-range order and the nanocrystals exhibit a slight atom loss (Figs. 3, 4 and Supplementary Movie 1 and Table 3). Specifically, the edge motifs include metal atoms

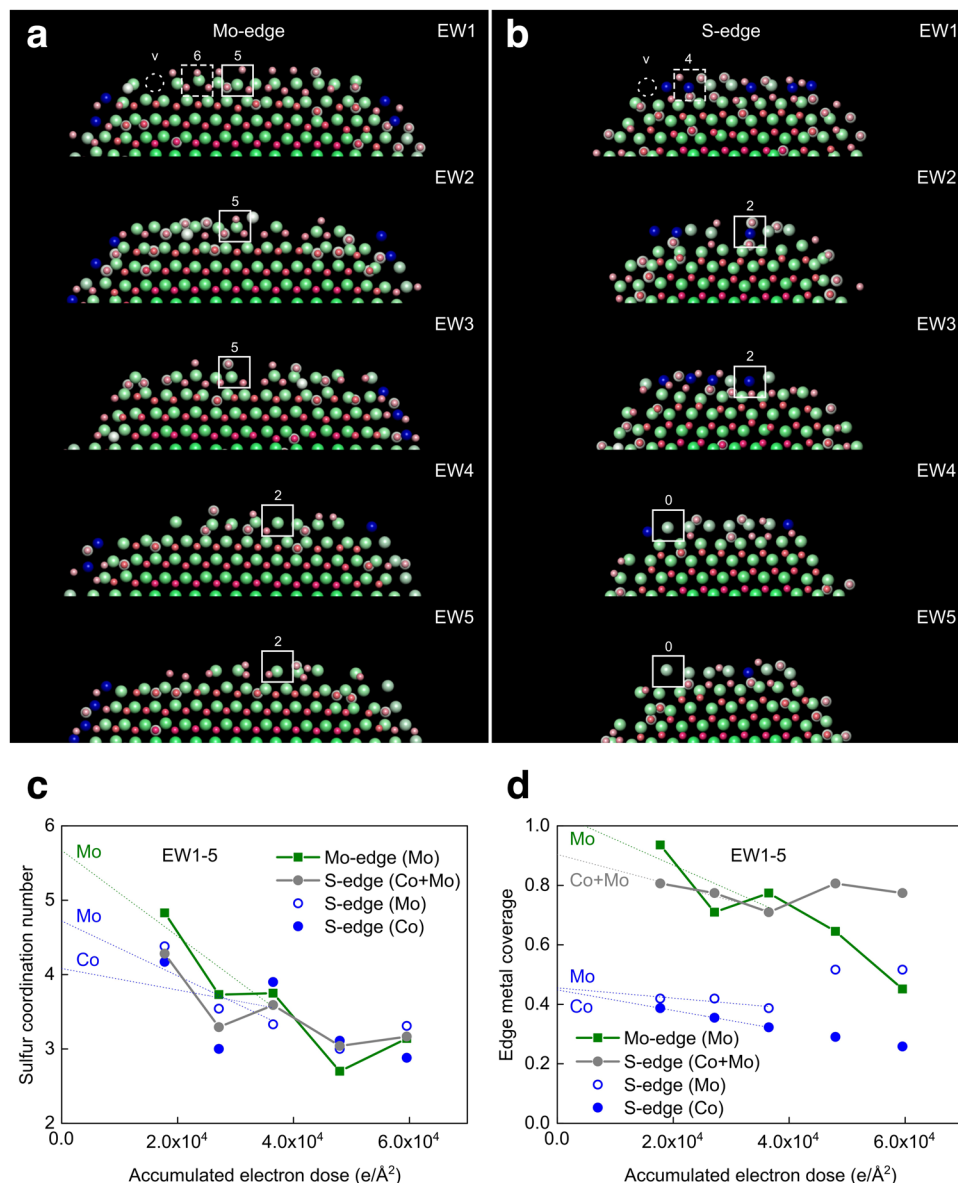


Fig. 4 Temporal edge motifs on the single-layer Co-Mo-S nanocrystal. **a–b** Close-ups of Mo- and S-edges of the 3D atom-dynamic images in Fig. 3. Each edge site is characterized by the metal atom and its number of coordinating sulfur atoms (Supplementary Fig. 11). Examples are highlighted by the superimposed boxes (solid lines: motifs with S-coordination that remain in successive 3D images, dashed lines: motifs with S-coordination similar to equilibrium structures predicted by density functional theory calculations^{26,27,37–39}). The v denotes a metal vacancy. **c** Average S coordination number for the Mo atoms at the Mo-edge and Mo and Co atoms at the S-edge shown versus electron dose. **d** The fraction of metal atoms at the Mo- and S-edge, respectively, versus electron dose. The atomic fraction is normalized to the number of metal atoms at the Mo-edges and S-edges, respectively, of a fully edge-decorated Co-Mo-S nanocrystal (Supplementary Fig. 11). Superimposed lines (dotted) indicate best linear fit to the data obtained from the low dose rate images (EW1–3) in **(a)** and **(b)**. Moreover, the electron dose is indicated for the center frame in the corresponding focus series.

with a four- and six-fold coordination by S, similar to equilibrium structures^{26,27}, and metal atoms with S deficiency, representing meta-stable atom arrangements (Fig. 4a, b and Supplementary Fig. 11). In fact, stability of edge motifs in successive images is only detected for ~12% of the edge sites, including two-fold coordinated Co atoms at the S-edge and five-fold coordinated Mo atoms at the Mo-edge (Fig. 4). Edge restructuring is accompanied by a linear decrease in the S coordination number as well as in the metal occupancies for the lower dose rate data (EW1–3; Fig. 4c, d). This progression enables an extrapolation to zero dose based on linear fitting. Hereby, the pristine edges are associated with a S coordination number of approximately 4–5 and 5 for Co and Mo

atoms at the S-edges, respectively, and 5–6 for Mo atoms at the Mo-edge (Fig. 4c). Moreover, the pristine edges contain a fully Mo-occupied Mo-edge and a roughly 50:50 Co:Mo alloy at the S-edge (Fig. 4d). These findings agree with predicted equilibrium structures of the Co-Mo-S and MoS₂ phases under the present sulfidation and imaging conditions^{26,27,37–39}. Thus, the nanocrystal edges structurally degrade under electron illumination. However, capturing the time dependence enables a single-atom extrapolation to the pristine atomic structure, which works best if the lower dose rate is employed. At the higher dose rate, for example, the S coordination number remains constant and the metal coverage continues decreasing at the Mo-edge, while it

remains almost constant at the S-edge (Fig. 4c, d). At the S-edge, Co atom removal is in fact accompanied by an incorporation of Mo atoms into vacant sites, which changes the one-dimensional edge alloy composition (Fig. 4d). Therefore, a critical assessment of the illumination conditions is needed to establish proper extrapolation schemes for retrieving pristine 3D atomic structure.

The analytical method presented here measures locally varying excitation strengths and enables an account of atom dynamics induced by the electron beam in the present case. Moreover, the edge alterations are accompanied by the formation and redistribution of S vacancies (Fig. 3 and Supplementary Fig. 12). These are primarily present on one side of the MoS₂ nanocrystal reflecting the exposed basal plane. Moreover, the S vacancies are mainly located at the atomic rows with the largest vibrational blur (Supplementary Fig. 12). This finding indicates that the edge-confined vibrations lead to bond-breaking events below the knock-on threshold values for atom displacements from bulk sites (“Methods”), and thus govern the dynamic progression of Co–Mo–S edges. This ability to relate local excitations and evolutions of atomic motifs is readily applicable and can in the future be beneficially used in phase contrast electron microscopy operating at the limits of electron optics and detection. The analytical model is therefore anticipated to open up possibilities for probing dynamic heterogeneities in nano-scale materials at the single-atom level both inherent and induced by chemically meaningful stimuli to advance the fundamental understanding of the structure-sensitive reactivity in clusters, surfaces, and molecules in general.

Methods

Sample preparation. An industrial-style Co-promoted MoS₂ (Co–Mo–S) hydro-treating catalyst was prepared by incipient wetness impregnation of a high-surface-area graphitic support with (NH₄)₂[MoS₄] precursor and Co(acetate)₂ followed by sulfidation as in Ref. 26. The sulfidation led to the formation of MoS₂ structures, including single- and few-layer nanocrystals. After sulfidation the catalyst was exposed to dry N₂ for storage, sample preparation, and transportation. The sample was only exposed to ambient for a few minutes for insertion into an electron microscope.

TEM imaging and exit wave reconstruction. Co–Mo–S nanocrystals supported on graphite were examined using the TEAM 0.5 microscope at Berkeley National Laboratory⁴⁰. The microscope was operated in the transmission electron microscopy (TEM) mode. The primary electron energy was 50 keV, which is below the threshold energy for S atom knock-on displacement from the basal plane of above 60 keV^{26,28–30} and, hence, suppresses atom sputtering of single S and Mo atoms²⁸. Nelsonian illumination sets the electron dose rates at ca. 94 and 290 e[−] Å^{−2} s^{−1}. These dose rates correspond to an average electron impingement rate of 5 × 10⁶ e[−] s^{−1} and 17 × 10⁶ e[−] s^{−1}, respectively, over the illuminated sample area that was slightly larger than the image area (approximately 24 × 24 nm²). Moreover, prior to image acquisition, the microscope was corrected for electron optical aberrations to 5th order with the spherical aberration coefficient set to ca. −11 μm with an isotropic information transfer of 0.34 Å^{−1}. Under these conditions, the microscope information limit is ca. 1.4 Å⁴¹, which is sufficient to resolve the 1.8 Å separation of 1Mo–2S dumbbell. The high stability of the TEAM 0.5 microscope allowed for acquisition of image series at well-defined optical settings⁴¹. Specifically, five successive focal series of images were acquired in focal steps of −5.5 Å (94 e[−] Å^{−2} s^{−1}) and −11 Å (290 e[−] Å^{−2} s^{−1}) and with defocus starting at approximately 350 Å using a Gatan US1000 charge-coupled device (CCD) camera with a pixel size of 0.230 Å and exposure time of 1 s. In order to avoid any interference of the graphite support lattice, the corresponding structure factors were removed by annular band-pass filtering of all images in the focal series of spatial frequencies between 0.44 and 0.50 Å^{−1} and > 0.77 Å^{−1} (Supplementary Fig. 1). The MoS₂ structure factors were not affected by the filtering. The modulation transfer function of the CCD pixel detector was measured by the edge method with an aperture⁴² and corrected for by Fourier deconvolution. Subsequently, each series of images were coarsely aligned using cross-correlation to compensate for lateral drift and each series was then processed to reduce residual drift, determine the image focal values and reconstruct the exit wave using the Gerchberg–Saxton algorithm as implemented in the exit wave reconstruction package of the MacTempas software (www.totalresolutions.com)⁴³ (Supplementary Fig. 1, 2).

Exit wave analysis. To quantify the atomic column heights, the complex exit waves were analyzed following Ref. 44. The positions of the atomic columns in the basal plane of the <001>-oriented Co–Mo–S nanocrystal were determined using the

peak-finding function in the MacTempas software followed by a refinement of the positions with sub-pixel precision by fitting a Gaussian function to each peak in the imaginary image. For each atomic column in an exit wave, the complex value was determined as the average of a peak-centered 3 × 3 pixels² area at a pixel sampling of 0.0624 Å/pixel, which is equivalent to 3.5 × 10^{−2} Å². Moreover, the valley sites in the MoS₂ structure in the exit waves were taken as vacuum sites and their values were also obtained as the average of a peak-centered 3 × 3 pixels² area at each vacant site of the MoS₂. For each column, the exit wave value was propagated by ± 50 Å around Gaussian focus in 0.1 Å steps by multiplication with the wave propagator exp(iπk²) in Fourier space (ε: defocus, k = |k|: spatial frequency). At each focus step, the exit wave modulus was averaged from a 3 × 3 pixels² area at all column positions. The resulting plot of modulus versus defocus was fitted by a second-order polynomial function yielding a maximum that represents the atomic column heights relative to a common image plane⁴⁴. The atomic column heights were then refined using the Big-Bang scheme⁵. Supplementary Fig. 3 shows histograms of atomic column heights. Subsequently, the exit wave values for all the atomic columns were corrected for their defocus and thus referenced to a common image plane. The focus-corrected exit wave values are presented in an Argand plot and hence properly reflect the atomic content (Supplementary Fig. 4). Specifically, this plot is expected for a thin specimen for which the electron wave function is approximated by Ψ(r) = 1 + iV(r), in which the phase and imaginary part are given as V(r). Figure 1 and Supplementary Fig. 2 show phase images of the exit wave and following Eqs. (1)–(3), the imaginary part is used for mass quantification.

A quantification of the stoichiometry and radius of the atomic columns is based on the analytical model Eqs. 1–3. According to Supplementary Eq. 17, the projected atomic number Z is linearly related to the projected electrostatic potential V associated with each atomic column. Moreover, each column is associated with a radius R reflecting the electron scattering potential, atom vibrations and residual lens aberrations. These structural parameters are related as: Im(<Ψ_N(r)>) = V/(πR²) exp(−r²/R²) with <Ψ_N(r)> as the exit wave normalized with respect to the vacuum wave defined in Supplementary Eq. 11 and 15. The Gaussian model for the imaginary part of the exit wave peaks at a value V' = V/(πR²), in units of eV Å, in the case of the isotropically broadened atomic columns (Eq. 3 and Supplementary Eq. 18). The V' value can be determined by inspecting the natural logarithm of Im(<Ψ_N(r)>) projected onto the r² axis. That is, ln{Im(<Ψ_N(r)>)}, is expected to be linearly related to r². From several Mo and S atomic sites (Supplementary Fig. 8a), typical plots of ln{Im(<Ψ_N(r)>)} vs r² are shown in Supplementary Fig. 7b. In each plot, the data are extracted from an atomic column within a square area of 21 × 21 pixel² (about 1.3 Å × 1.3 Å) divided into 71 circular zones in radial direction with an equal r² up to near 1 Å². The pixel sampling is 0.0624 Å/pixel, and 1 Å corresponds to the length from the peak center of the atomic column to the corner in diagonal direction. Linear regression provides the slope and intercept, corresponding to 1/R² and ln(V'), respectively, for the Gaussian model of an azimuthally symmetric atomic column. In practice, however, the atomic column shapes are associated with an azimuthally varying radius R as reflected by the non-linear fans in Supplementary Fig. 7b. The anisotropic shape (Supplementary Fig. 6b) is also reflected by the insets of Supplementary Fig. 7b that are binary images displaying only the pixels with a value within 75–83% of the peak value V' of the atomic columns in the imaginary image. For a perfect Gaussian function, the width at 80% of the peak value is equivalent to a size of about 0.95 R. Moreover, the 21 × 21 pixel² area may also include contrast contributions from neighboring atomic columns. That is, the anisotropic shapes evolve from temporary residual aberrations, atom vibrations, as well as overlap with its nearest neighboring atomic columns. In fact, the overlap leads to an azimuthally varying radius that can span negative as well as positive slopes (Supplementary Fig. 7c). In view of these findings, the peak values V' are determined by restricting the linear regression to about r² = 0.2 Å² (r = 0.45 Å) to remove overlapping atomic columns. In fact, all fans in Supplementary Fig. 7b have a common intercept, which provides a precise determination of the peak value V'. The V' values are presented at the corresponding atomic column positions as maps (Fig. 1d) and azimuthally averaged and plotted versus the radial distance from the edge toward the center of the nanocrystal (Supplementary Fig. 5). Furthermore, R is given as an averaged atomic column radius R_{av}, which is determined as the average of R_{max} and R_{min}, being the longest and shortest radius of an anisotropic atomic column in binary images (Supplementary Fig. 6a, b), respectively. That is,

$$R_{av} = (R_{max} + R_{min})/2. \quad (5)$$

Thus, multiplication of V' (=V/(πR²)) and (πR_{av})² yields the estimated integrated potential value V for every atomic column. The integrated potential V is expected to be decently uniform across the MoS₂ nanocrystal because of the opposing radial trends in V' (Supplementary Fig. 6) and R_{av} (Supplementary Fig. 6a, b), as also evidenced by the V map (Fig. 1f). Moreover, all Mo and S atomic columns are used to generate the histograms of distorted Mo–S bond angles (Supplementary Fig. 6c).

The V values associated with atomic columns in either the metal or S sub-lattices are divided into about 40–50 channels depending on the number of atomic columns, as shown in Fig. 2a and Supplementary Fig. 7b. That is, the number of Mo and S columns are about 317–305 and 355–318, respectively, for exit wave EW1 to EW5 and the number of columns divided by 7 is used as the number of channels in the V histograms. The number of channels in each histogram is thus around 45–43 for Mo and 50–45 for the S sub-lattices, respectively. The resulting

histograms reveal several peaks that are fitted with a Gaussian function. The corresponding peak positions and standard deviations (σ) are listed in Supplementary Table 1.

Data availability

The data reported in this study are available from the authors upon reasonable request.

Code availability

The analysis procedures are based on mathematical equations and image processing as described in “Methods”. The corresponding codes are written in the Tempas platform (www.totalresolution.com) and are available from the authors upon reasonable request.

Received: 14 January 2021; Accepted: 5 July 2021;

Published online: 18 August 2021

References

- Feynmann, R. P. There's plenty of room at the bottom. *Eng. Sci.* **23**, 22–36 (1960).
- Zuo, J. M., Vartanyants, I., Gao, M., Zhang, R. & Nagahara, L. A. Atomic resolution imaging of a carbon nanotube from diffraction intensities. *Science* **300**, 1419–1421 (2003).
- Gontard, L. C. et al. Aberration-corrected imaging of active sites on industrial catalyst nanoparticles. *Angew. Chem.—Int. Ed.* **46**, 3683–3685 (2007).
- Van Aert, S., Batenburg, K. J., Rossell, M. D., Erni, R. & Van Tendeloo, G. Three-dimensional atomic imaging of crystalline nanoparticles. *Nature* **470**, 374–377 (2011).
- Van Dyck, D., Jinschek, J. R. & Chen, F. R. ‘Big Bang’ tomography as a new route to atomic-resolution electron tomography. *Nature* **486**, 243–246 (2012).
- Miao, J., Ercius, P. & Billinge, S. J. L. Atomic electron tomography: 3D structures without crystals. *Science* **353**, aaf2157 (2016).
- Chen, F. R., Van Dyck, D. & Kisielowski, C. In-line three-dimensional holography of nanocrystalline objects at atomic resolution. *Nat. Commun.* **7**, 10603 (2016).
- Kim, B. H. et al. Critical differences in 3D atomic structure of individual ligand-protected nanocrystals in solution. *Science* **368**, 60–67 (2020).
- Kisielowski, C. et al. Detecting structural variances of Co_3O_4 catalysts by controlling beam-induced sample alterations in the vacuum of a transmission electron microscope. *Adv. Struct. Chem. Imaging* **2**, 13 (2016).
- Kisielowski, C. et al. Real-time sub-Ångstrom imaging of reversible and irreversible conformations in rhodium catalysts and graphene. *Phys. Rev. B* **88**, 024305 (2013).
- Zhou, J. et al. Observing crystal nucleation in four dimensions using atomic electron tomography. *Nature* **570**, 500–503 (2019).
- De Wael, A. et al. Measuring dynamic structural changes of nanoparticles at the atomic scale using scanning transmission electron microscopy. *Phys. Rev. Lett.* **124**, 106105 (2020).
- Altantzis, T. et al. Three-dimensional quantification of the facet evolution of Pt nanoparticles in a variable gaseous environment. *Nano Lett.* **19**, 477–481 (2019).
- Zhang, Y. & Flannigan, D. J. Observation of anisotropic strain-wave dynamics and few-layer dephasing in MoS_2 with ultrafast electron microscopy. *Nano Lett.* **19**, 8216–8224 (2019).
- Batson, P. E. Motion of gold atoms on carbon in the aberration-corrected STEM. *Microsc. Microanal.* **14**, 89–97 (2008).
- Lawrence, E. L., Levin, B. D. A., Boland, T., Chang, S. L. Y. & Crozier, P. A. Atomic scale characterization of fluxional cation behavior on nanoparticle surfaces: probing oxygen vacancy creation/annihilation at surface sites. *ACS Nano* **15**, 2624 (2021).
- Flannigan, D. J. & Zewail, A. H. 4D electron microscopy: principles and applications. *Acc. Chem. Res.* **45**, 1828–1839 (2012).
- Winkler, F. et al. Absolute scale quantitative off-axis electron holography at atomic resolution. *Phys. Rev. Lett.* **120**, 156101 (2018).
- Kisielowski, C. et al. Imaging MoS_2 nanocatalysts with single-atom sensitivity. *Angew. Chem. Int. Ed.* **49**, 2708–2710 (2010).
- Van Dyck, D. Atomic Resolution Electron Microscopy in *Handbook of Nanoscipy* (eds. Tendeloo, G., Van Dyck, D. & Pennycook, S. J.) 45–79 (Wiley-VCH, 2012).
- Van Dyck, D. & Op De Beeck, M. A simple intuitive theory for electron diffraction. *Ultramicroscopy* **64**, 99–107 (1996).
- Chhowalla, M. et al. The chemistry of two-dimensional layered transition metal dichalcogenide nanosheets. *Nat. Chem.* **5**, 263–275 (2013).
- Chen, Q. et al. Atomically flat zigzag edges in monolayer MoS_2 by thermal annealing. *Nano Lett.* **17**, 5502–5507 (2017).
- Zhao, X. et al. Mo-terminated edge reconstructions in nanoporous molybdenum disulfide film. *Nano Lett.* **18**, 482–490 (2018).
- Sang, X. et al. In situ edge engineering in two-dimensional transition metal dichalcogenides. *Nat. Commun.* **9**, 2051 (2018).
- Hansen, L. P. et al. Atomic-scale edge structures on industrial-style MoS_2 nanocatalysts. *Angew. Chem. Int. Ed.* **50**, 10153–10156 (2011).
- Zhu, Y. et al. Visualizing the stoichiometry of industrial-style Co-Mo-S catalysts with single-atom sensitivity. *Angew. Chem. Int. Ed.* **53**, 10723–10727 (2014).
- Komsa, H. P. et al. Two-dimensional transition metal dichalcogenides under electron irradiation: Defect production and doping. *Phys. Rev. Lett.* **109**, 035503 (2012).
- Kretschmer, S., Lehnert, T., Kaiser, U. & Krasheninnikov, A. V. Formation of defects in two-dimensional MoS_2 in the transmission electron microscope at electron energies below the knock-on threshold: the role of electronic excitations. *Nano Lett.* **20**, 2865–2870 (2020).
- Susi, T., Meyer, J. C. & Kotakoski, J. Quantifying transmission electron microscopy irradiation effects using two-dimensional materials. *Nat. Rev. Phys.* **1**, 397–405 (2019).
- Jiang, N. Electron beam damage in oxides: a review. *Rep. Prog. Phys.* **79**, 016501 (2015).
- Robertson, A. W. et al. Spatial control of defect creation in graphene at the nanoscale. *Nat. Commun.* **3**, 1144 (2012).
- Barthel, J. & Thust, A. On the optical stability of high-resolution transmission electron microscopes. *Ultramicroscopy* **134**, 6–17 (2013).
- Specht, P. et al. Quantitative contrast evaluation of an industry-style rhodium nanocatalyst with single atom sensitivity. *ChemCatChem* **3**, 1034–1037 (2011).
- Rezikyan, A. et al. Speckle suppression by decoherence in fluctuation electron microscopy. *Microsc. Microanal.* **21**, 1455–1474 (2015).
- Kirkland, E. J. *Advanced Computing in Electron Microscopy* (Plenum Press, New York, 1998).
- Bollinger, M. V., Jacobsen, K. W. & Nørskov, J. K. Atomic and electronic structure of MoS_2 nanoparticles. *Phys. Rev. B* **67**, 1–17 (2003).
- Prodhomme, P. Y., Raybaud, P. & Toulhoat, H. Free-energy profiles along reduction pathways of MoS_2 M-edge and S-edge by dihydrogen: a first-principles study. *J. Catal.* **280**, 178–195 (2011).
- Šarić, M., Rossmeisl, J. & Moses, P. G. Modeling the active sites of Co-promoted MoS_2 particles by DFT. *Phys. Chem. Chem. Phys.* **19**, 2017–2024 (2017).
- Kisielowski, C. et al. Detection of single atoms and buried defects in three dimensions by aberration-corrected electron microscope with 0.5-Å information limit. *Microsc. Microanal.* **14**, 469–477 (2008).
- Barton, B. et al. Atomic resolution phase contrast imaging and in-line holography using variable voltage and dose rate. *Microsc. Microanal.* **18**, 982–994 (2012).
- Boothroyd, C. B., Kasama, T. & Dunin-Borkowski, R. E. Comparison of approaches and artefacts in the measurement of detector modulation transfer functions. *Ultramicroscopy* **129**, 18–29 (2013).
- Hsieh, W. K., Chen, F. R., Kai, J. J. & Kirkland, A. I. Resolution extension and exit wave reconstruction in complex HREM. *Ultramicroscopy* **98**, 99–114 (2004).
- Chen, F. R., Kisielowski, C. & Van Dyck, D. 3D reconstruction of nanocrystalline particles from a single projection. *Micron* **68**, 59–65 (2015).

Acknowledgements

The authors gratefully acknowledge Michael Brorson and Sven Ullmann (Haldor Topsoe A/S) for support with the specimens and Hanne Falsig (Haldor Topsoe A/S) for fruitful discussions. Work at the Molecular Foundry was supported by the Office of Science, Office of Basic Energy Sciences, of the U.S. Department of Energy under Contract No. DE-AC02-05CH11231. FRC would like to acknowledge the support from HZQB-KCZYB-2020031, MOST-105-2221-E-007-023-MY3, MOST 104-2221-E-007-067-MY3 and City University of Hong Kong under projects of project number 9360162 and 9380092. LPH acknowledges support from the Danish Council for Technology and Innovation (08-044837). The Center for Visualizing Catalytic Processes is sponsored by the Danish National Research Foundation (DNRF146). Authors declare no competing interests.

Author contributions

L.P.H. and B.B. acquired the experimental data and performed the exit wave reconstructions. D.V.D. developed the analytical model of the exit wave. F.-R.C. carried out the quantitative analysis of the exit waves in close collaboration with D.V.D., C.F.K. and S.H. C.F.K. and S.H. initiated the project and supported the experiments and analysis. All authors were active in writing this paper.

Competing interests

The authors declare no competing interests.

Additional information

Supplementary information The online version contains supplementary material available at <https://doi.org/10.1038/s41467-021-24857-4>.

Correspondence and requests for materials should be addressed to S.H.

Peer review information *Nature Communications* thanks Jian-Min Zuo, Peter Rez and the other anonymous reviewers for their contribution to the peer review of this work.

Reprints and permission information is available at <http://www.nature.com/reprints>

Publisher's note Springer Nature remains neutral with regard to jurisdictional claims in published maps and institutional affiliations.



Open Access This article is licensed under a Creative Commons Attribution 4.0 International License, which permits use, sharing, adaptation, distribution and reproduction in any medium or format, as long as you give appropriate credit to the original author(s) and the source, provide a link to the Creative Commons license, and indicate if changes were made. The images or other third party material in this article are included in the article's Creative Commons license, unless indicated otherwise in a credit line to the material. If material is not included in the article's Creative Commons license and your intended use is not permitted by statutory regulation or exceeds the permitted use, you will need to obtain permission directly from the copyright holder. To view a copy of this license, visit <http://creativecommons.org/licenses/by/4.0/>.

© The Author(s) 2021