

UCLA

UCLA Previously Published Works

Title

Finding history: the locational geography of Ashokan inscriptions in the Indian subcontinent

Permalink

<https://escholarship.org/uc/item/2m66x8f3>

Journal

Antiquity, 90(350)

ISSN

0003-598X

Authors

Smith, Monica L
Gillespie, Thomas W
Barron, Scott
[et al.](#)

Publication Date

2016-04-01

DOI

10.15184/aqy.2016.6

Peer reviewed

Antiquity

<http://journals.cambridge.org/AQY>

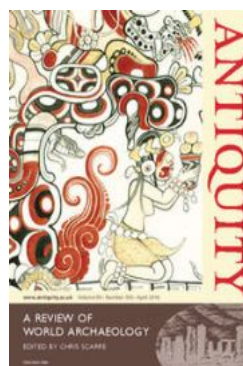
Additional services for **Antiquity**:

Email alerts: [Click here](#)

Subscriptions: [Click here](#)

Commercial reprints: [Click here](#)

Terms of use : [Click here](#)



Finding history: the locational geography of Ashokan inscriptions in the Indian subcontinent

Monica L. Smith, Thomas W. Gillespie, Scott Barron and Kanika Kalra

Antiquity / Volume 90 / Issue 350 / April 2016, pp 376 - 392

DOI: 10.15184/aqy.2016.6, Published online: 06 April 2016

Link to this article: http://journals.cambridge.org/abstract_S0003598X16000065

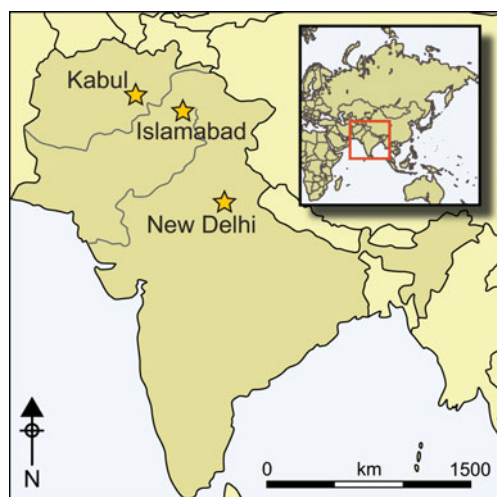
How to cite this article:

Monica L. Smith, Thomas W. Gillespie, Scott Barron and Kanika Kalra (2016). Finding history: the locational geography of Ashokan inscriptions in the Indian subcontinent. *Antiquity*, 90, pp 376-392 doi:10.15184/aqy.2016.6

Request Permissions : [Click here](#)

Finding history: the locational geography of Ashokan inscriptions in the Indian subcontinent

Monica L. Smith¹, Thomas W. Gillespie², Scott Barron²
& Kanika Kalra³



The Mauryan dynasty of the third century BC was the first to unite the greater part of the Indian subcontinent under a single ruler, yet its demographic geography remains largely uncertain. Here, the HYDE 3.1 database of past population and land-use is used to offer insights into key aspects of Mauryan political geography through the locational analysis of the Ashokan edicts, which are the first stone inscriptions known from the subcontinent and which constitute the first durable statement of Buddhist-inspired beliefs. The known distribution of rock and pillar edicts across the subcontinent can be combined with HYDE 3.1 to generate predictive models for the location of undiscovered examples and

to investigate the relationship between political economy and religious activities in an early state.

Keywords: Indian subcontinent, Ashokan edicts, stone inscriptions, HYDE 3.1, Buddhism

Introduction

Large datasets facilitate the study of human activities on a continental scale, ranging from the analysis of ancient mobility (Prado *et al.* 2015) to the dynamics of historical states and empires (Peterson & Drennan 2012; Kintigh *et al.* 2014). The availability of synthetic longitudinal human-environmental data for the past 12 000 years additionally provides the opportunity for researchers to incorporate landscape variability and environmental

¹ Department of Anthropology, University of California, Los Angeles, 375 Portola Plaza, Los Angeles, CA 90095–1553, USA (Email: smith@anthro.ucla.edu)

² Department of Geography, University of California, Los Angeles, 315 Portola Plaza, Los Angeles, CA 90095–1524, USA

³ Archaeology Interdepartmental Program, University of California, Los Angeles, Los Angeles, CA 90095–1510, USA

change in studies of agency and place-making. To this end, the historical land-use database known as HYDE 3.1 (Klein Goldewijk *et al.* 2010, 2011) is here used to query the distribution of Ashokan edicts, the first stone inscriptions on the Indian subcontinent. These politico-religious documents are associated with Ashoka, the most celebrated ruler of the Mauryan polity of the third century BC, and have been found from Afghanistan to Nepal. The assessment results in two distinct outcomes: an analysis of the placement of known edicts, and the capacity to develop a predictive model to search for as yet undiscovered exemplars.

The function of stone inscriptions

Stone inscriptions are a valuable source of primary historical data. Unlike texts written on organic materials such as parchment and papyrus, which were often copied by many hands through both the ancient and medieval eras, stone inscriptions provide an immutable voice from the past. Inscriptions are known from around the world and include dedicatory, religious, instructional and political themes, as well as individual names and graffiti dating back to the earliest literate times. Stone inscriptions were a particularly potent form of political display, with leaders in many ancient cultures using them to make political or religious proclamations through the use of writing as a technology of the state (cf. Houston 2004). In some cases inscriptions were made on stones that were quarried and moved to the places in which they were set up for public viewing (e.g. the code of Hammurabi and other Mesopotamian stelae, Roman milestones, the Maya stelae, and the stelae of the Silla kingdom of Korea (for the latter, see Kang 2006)). In other cases, rulers had the living rock inscribed to commemorate their achievements (e.g. inscriptions at the source of the Tigris River by Tiglathpileser I (1114–1076 BC) and Shalmaneser III (858–824 BC; Harmanşah 2007), and the Bisitun inscription of Darius I in Persia (520–519 BC; Finn 2011).

In South Asia, the first stone inscriptions occur in the third century BC, coincident with the appearance of the Mauryan polity in the northern Gangetic plain (Allchin & Norman 1985; Thapar 1997 [1961], 2004 [2002], 2006; Falk 2006). The inscriptions are known as Major and Minor Rock Edicts and consist of repetitive copies of texts attributed to the Mauryan leader Ashoka (*c.* 268–231 BC). Just as scholars have used Roman milestones or medieval *kos minars* (distance markers) to reconstruct the territorial extent of a state, researchers and political figures have interpreted the known Ashokan inscriptions as proxy boundary markers for “the first virtually all-India empire” (Singh 2012: 131; for alternate views of the territorial state model see Smith 2005; Sugandhi 2013). Regardless of how one assesses the politically charged trope of premodern subcontinental unification, the Ashokan era remains a compelling presence in modern South Asia; for example, the national seal of India is an image of a four-headed lion pillar capital attributed to Ashoka that is widely distributed on coinage, official letterheads and government documents (Brown 2009; Ray 2012). The study of Ashoka’s social impacts and mode of governance is currently enjoying a popular and academic resurgence (e.g. Chakrabarti 2011; Olivelle *et al.* 2012; Singh 2012; Lahiri 2015), a factor that provides additional impetus to a purposeful programme of site discovery.

The importance of the Ashokan edicts for the history of Buddhism

Unlike the texts that may have served as their inspirational precursors (such as the above-mentioned inscription of Darius I), the Ashokan edicts do not focus on the aggrandisement of the leader and instead convey information about royal activities in support of the then-nascent religion of Buddhism. The Buddha, as a historically known individual who lived in the mid first millennium BC, is familiar to us today as the founder of one of the world's great religions, but in his lifetime he was only one of several proponents of self-actualising ritual traditions that emerged in reaction to hierarchical Vedic religious practices. In the third century BC when Ashoka was ruling, Buddhism was probably regarded as a relatively esoteric ritual practice, given that some of its most distinctive iconography, such as the representation of the Buddha in human form, had not yet been developed (DeCaroli 2015).

Ashoka's autobiographical endorsements served to spread the doctrine of Buddhism beyond its Gangetic origins to a larger audience (Reat 1994; Lahiri 2015). The edicts proclaim the leader's adherence to *dhamma* (dharma) and non-violence as the result of an epiphany after a particularly costly war (note that in the edicts Ashoka uses the pseudonym Piyadassi), as recorded in this excerpt from the thirteenth Major Rock Edict:

When he had been consecrated eight years the Beloved of the Gods, the king Piyadassi conquered Kalinga [eastern India]. A hundred and fifty thousand people were deported, a hundred thousand were killed and many times that number perished. Afterwards, now that Kalinga was annexed, the Beloved of the Gods very earnestly practised Dhamma, desired Dhamma, and taught Dhamma. On conquering Kalinga the Beloved of the Gods felt remorse, for, when an independent country is conquered the slaughter, death and deportation of the people is extremely grievous to the Beloved of the Gods, and weighs heavily on his mind (Thapar 1997 [1961]: 255).

Ashoka provided other material support to Buddhism in the course of his reign by convening the gathering known as the Third Buddhist Council, by sponsoring the construction of 84 000 *stupas* (reliquaries) and by sending his son and daughter to Sri Lanka to spread the doctrine of *dhamma* (Thapar 1997 [1961]: 46–47).

The inscriptions

The Ashokan inscriptions are manifested in two physical forms: moveable stone pillars and inscriptions on living rock (Allchin & Norman 1985; Norman 1991; Thapar 1997 [1961]; Falk 2006; Sugandhi 2008; Figure 1). The pillar edicts are carved on highly polished monolithic sandstone cylinders, some of which measure more than 13m tall (Falk 2006: 152; Figure 2). They are concentrated in the eastern Ganges Valley, with a particularly marked cluster along the present India-Nepal border in the area known as the birthplace of the historical Buddha, which was also the heartland of the Mauryan polity ruled by Ashoka (see Coningham *et al.* 2013). Although no systematic testing has been carried out, the pillars are carved from distinctive sandstones that suggest a limited number of quarries along the Ganges (Jayaswal 1998; Falk 2006: 142). The pillar edicts are relatively rare (under a dozen well-attested exemplars), and some are known to have been displaced to other cities in historical times. As far as can be discerned, the pillars were originally at the heart of

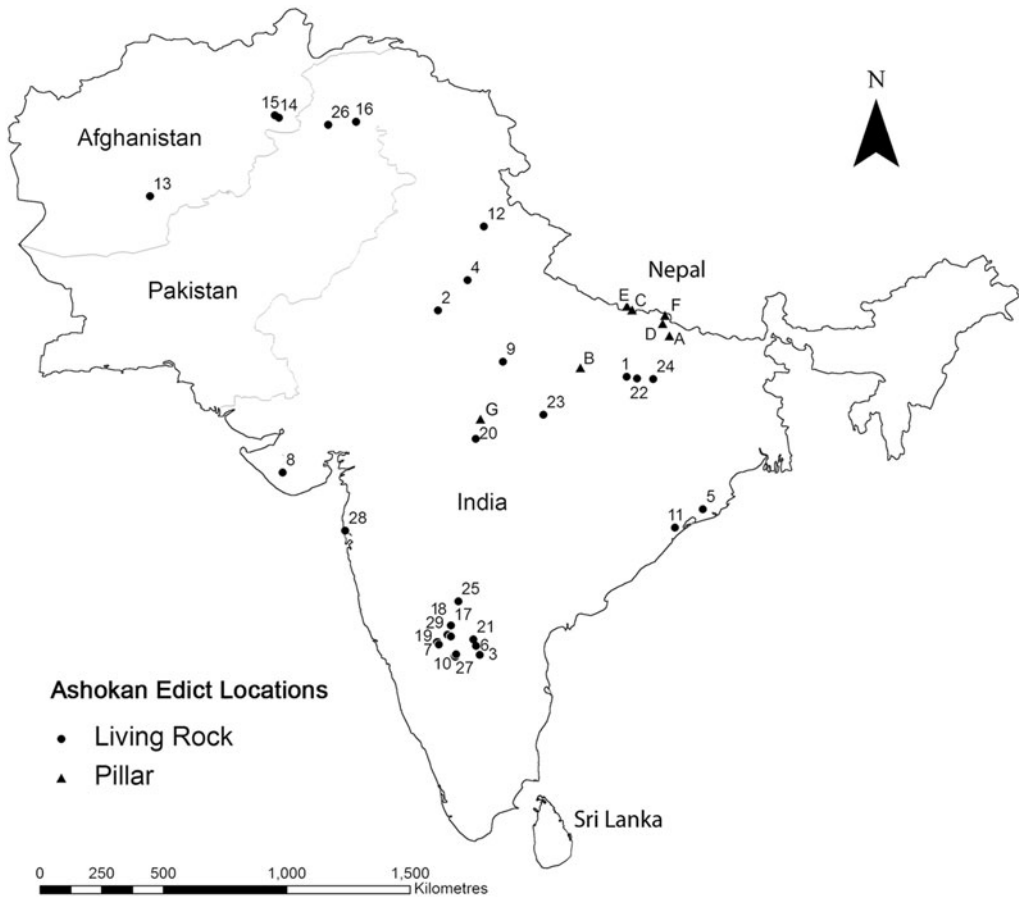


Figure 1. Location of known Ashokan edicts in the Indian subcontinent (numbers denote living-rock edicts; letters denote in situ pillar edicts): 1) Abraura; 2) Bairat; 3) Brahmagiri; 4) Delhi; 5) Dhauli; 6) Erragudi; 7) Gavimath; 8) Girnar; 9) Gujara; 10) Jatinga-Rameswara; 11) Jaugada; 12) Kalsi; 13) Kandahar I & II; 14) Lampaka (Pul-i Darunta); 15) Laghman I & II; 16) Mansebra; 17) Maski; 18) Nittur; 19) Palkigundu; 20) Panguraria; 21) Rajula-Mandagiri; 22) Ratanpurwa; 23) Rupnath; 24) Sahasram; 25) Sannati; 26) Shahbazgarhi; 27) Siddapur; 28) Sopara; 29) Udegolam; A) Araraj; B) Kausambi; C) Lumbini; D) Nandangarh; E) Nigliva; F) Rampurva; G) Sanchi. Note that K.R. Norman (2012: 60) has suggested that Sannati was originally a free-standing slab, but because it was recovered lying within a Brahmanical temple in an obviously displaced condition, it is treated here as a living-rock exemplar.

population centres or in their immediate surroundings, indicating that they were meant to convey power through placement as well as through the control of specialised craft-making and engineering skills.

The living-rock inscriptions, in contrast, encompass a distinctly different logic of placement. They are distributed in a much wider geographic range, with 31 such inscriptions currently known throughout the northern subcontinent. They are found as far west as Shahbazgarhi (Afghanistan), through Pakistan, into India eastward along the southern fringe of the Ganges plain and as far south as Jatinga-Rameshwara in the Indian state of Karnataka. There is little apparent consistency in their makeup and positionality: some are carved on sandstone and others on basalt, and some are placed in prominent locations within the heart

of ancient settlements, while others are tucked away at the midpoint of rocky outcrops or in otherwise unremarkable locations away from ancient cities (Figure 3).

Despite their importance for the study of Buddhism and state formation in the subcontinent, much remains to be learned about the Ashokan inscriptions.



Figure 2. Sandstone pillar carved with Ashokan edict at the ancient city of Kausambi, India (photograph by Monica L. Smith).

The known edicts bear the marks of several different styles (Falk 2006, 2013), but there has been little systematic palaeographic study to discern the number of scribal ‘hands’ involved in their production. In addition, there is considerable variance on what ‘counts’ as an edict. The total number of inscriptions thus varies, with some lists including the Barabar Caves inscription of eastern India and a portable stone (now lost?) from Mahasthangarh in Bangladesh (although Thapar 1997 [1961]: 233 identifies the Mahasthangarh inscription as ‘pre-Ashokan’, an assessment that has interestingly prompted little subsequent commentary). Finally, the number of exemplars remains small, although the widespread distribution of known edicts indicates the likelihood that more of them exist than are currently known. About once every decade, a previously unknown Ashokan living-rock inscription has been discovered, with the most recent in 2009 (Thaplyal 2009; Falk 2013; Figure 4). In India, newly found inscriptions are greeted with considerable public and media attention and are subsequently protected by

the governmental Archaeological Survey of India, which has installed enclosures, translations and tourist facilities.

The total original number of Ashokan living-rock inscriptions will never be known, but the potential for the discovery of more inscriptions is a realistic proposition. As Romila Thapar (1997 [1961]: 169) has argued, the text of the fourteenth Major Rock Edict indicates that Ashoka:

had these edicts inscribed throughout the country in complete or abridged versions. It appears from this that the extant inscriptions were not the only ones to be published and that many more versions were either inscribed on rock and remain as yet undiscovered, or else were made public in other forms.

The impetus for the discovery of new Ashokan inscriptions is also made increasingly urgent by the speed of landscape modification throughout South Asia. Quarries are

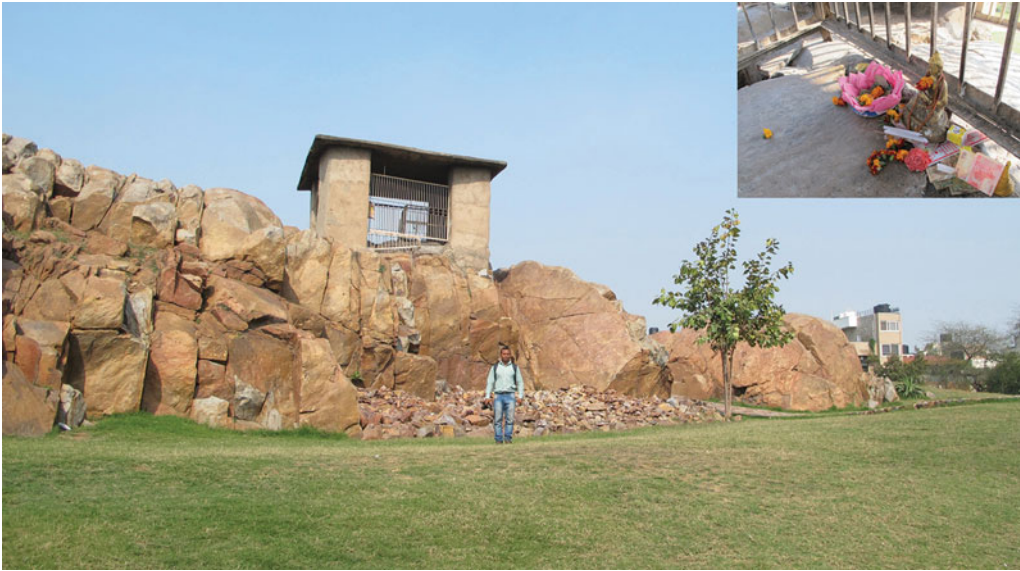


Figure 3. Living-rock inscription in New Delhi; inset shows devotional items recently deposited by local and international pilgrims (photograph by Monica L. Smith).

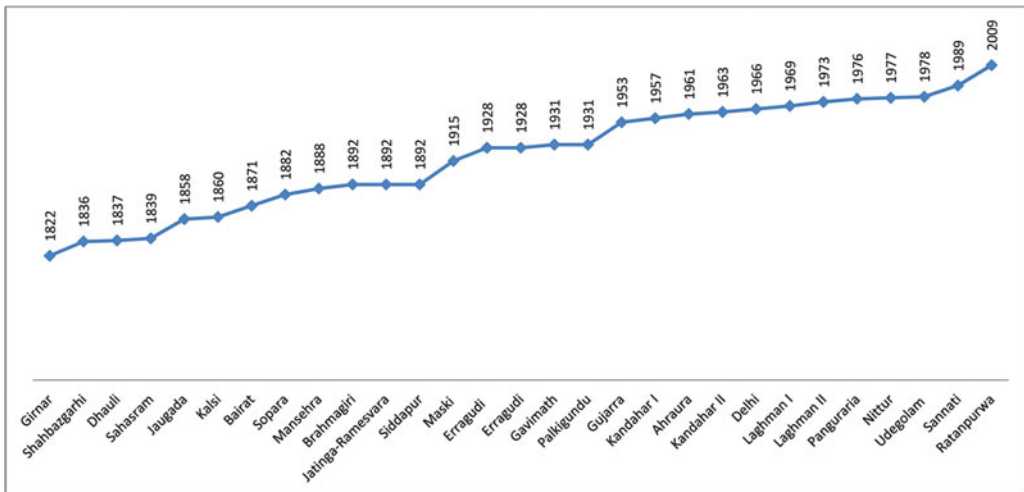


Figure 4. Discovery date of Ashokan living-rock inscriptions (note that there are three additional inscriptions for which precise first dates of recording are not known: Rajula-Mandagiri in the early 1800s; Rupnath in the 1870s; and Lampaka, in Afghanistan, recognised some time before 1932; data from Falk 2006).

being expanded to supply construction material to growing populations (e.g. Biagi 2006; Selvakumar 2010); dams are flooding valley floors in which archaeological remains are located; and agricultural intensification is modifying the landscape around known and potential inscription areas (Paddayya 1996; Sugandhi 2008: 135–36, 163).

To our knowledge, no systematic programme has ever been developed to identify the potential locations of additional inscriptions. The locational characteristics of Ashokan edicts can, however, be used to analyse known living-rock inscriptions and to identify places for efficient ground-based research. For this project, the minimum standard for the identification of an ‘edict’ was the presence of wording that also appears on other inscriptions, indicative of deliberate copying of a standardised text (Figure 1; see Thapar 1997 [1961] for texts and translations). Locations of known Ashokan edicts were mapped against landscape data, both for the study of currently known edicts and to suggest locations for further research.

Predictive modelling for archaeological discovery and the HYDE 3.1 database

Predictive modelling, used across the biological and geographical sciences, is an approach that employs large datasets to identify the probable location of specific types of natural resources and cultural phenomena. Predictive modelling can also serve as a tool of heritage management, so that sites can be located and mitigated prior to construction, or avoided altogether if the planned construction can be relocated. Further, predictive modelling can be undertaken in the recognition that not all archaeological resources are perceived to be of similar ‘value’, resulting in the prioritisation of some types of heritage by national governments and funding agencies. Archaeologists increasingly focus their investigations on the most probable locations of ancient settlements and other sites, particularly when faced with limited accessibility due to factors of ownership, incipient or actual warfare, and other legal and logistical issues (e.g. Ford *et al.* 2009; Watson 2011; Huynh *et al.* 2013).

The following assessments make use of the History Database of the Global Environment (HYDE 3.1), a data compilation of population density and land-use capacity for the Holocene (Klein Goldewijk *et al.* 2010, 2011). The HYDE 3.1 database combines projected population data with land-use data to model long-term global change related to human environmental use at a 5-minute resolution (9.26km pixel size). In the short time since its release, it has been championed as the “first and most popular model” of global land use (Ellis *et al.* 2013: 7979), and has been used to model large-scale scenarios as diverse as ancient Roman water networks (Dermoddy *et al.* 2014) and the effects of pre-modern rice agriculture on methane levels (Fuller *et al.* 2011). For this edict-modelling project, we focused on cultivable land, pastures and population configurations starting in the first millennium BC to contextualise the relationship between population and the location of the Ashokan inscriptions, and to identify areas of high population density where inscriptions might be expected but have not yet been identified. Locations of Ashokan inscriptions were overlaid in ARCMAP 9.3 (ESRI, Redlands, CA, USA) for three time periods: 1000 BC, AD 0 and AD 200 (the available HYDE datasets that bracket the time period of the Ashokan inscriptions).

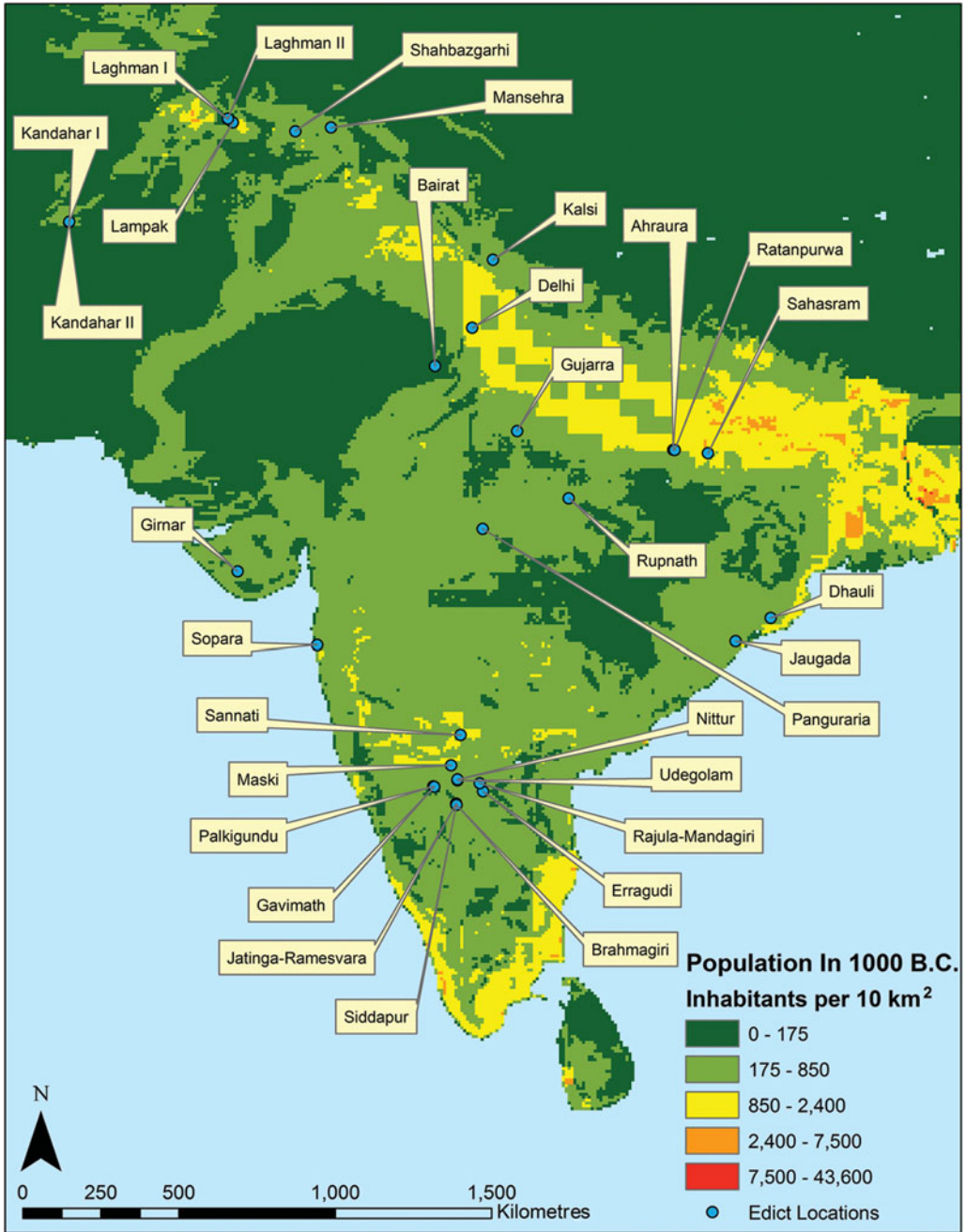
Like other datasets compiled from multiple source inputs, the scale and resolution of the HYDE 3.1 database is coarse-grained and may gloss over the subtleties of any particular

local landscape (a common critique of broad-scale interpretation: see Edwards 2003: 223; Ellis *et al.* 2013: 7983). However, the trade-off to these shortcomings is that the coverage provided by mass datasets is comprehensive and based on standard and repeatable elements of measurement. Environmental data of the type captured in the HYDE 3.1 database is objective and available for entire landscapes, a ubiquity and evenness of coverage that is usually more comprehensive than information about archaeological sites (Kvamme 1992: 22; Stark & Garraty 2008). Evaluations of human landscape use indicate that people do selectively target specific areas, and that migrating peoples in particular select the salient characteristics of new landscapes to match memories of familiar places (Rockman & Steele 2003). In South Asia at the end of the first millennium BC, increased population density, urbanism, agricultural intensification and Buddhism were co-dependent and emerged together (Shaw & Sutcliffe 2003: 82; Singh 2008: ch. 6), rendering HYDE's land/population mapping particularly suitable for the study of cultural phenomena.

HYDE 3.1 and the locational analysis of the Ashokan edicts

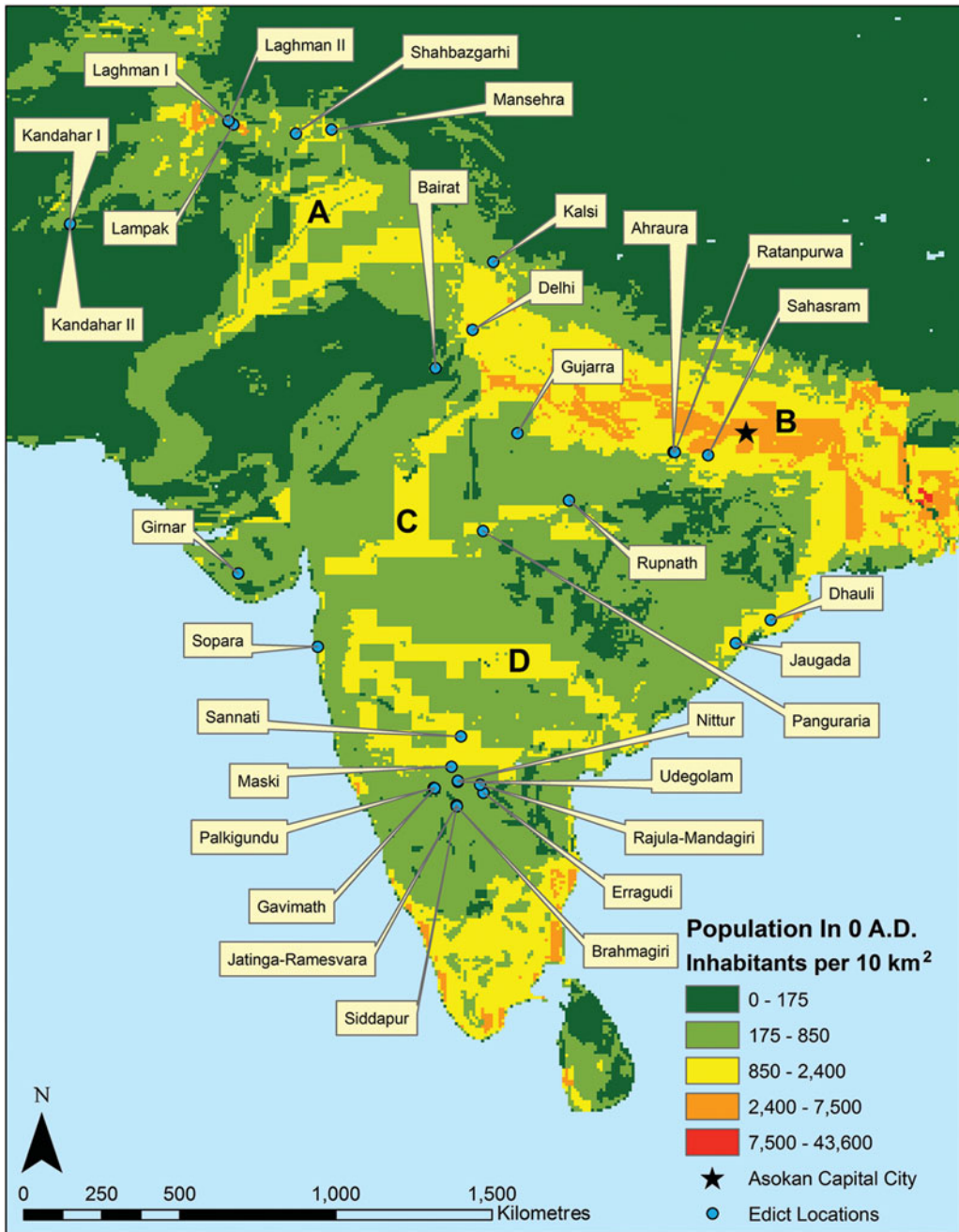
Where are the Ashokan edicts found and not found, compared to the HYDE 3.1 data? As might be expected, more than half of the known inscriptions are located in the areas of highest population density, including the Gangetic plain of the northern subcontinent, which was home to the large territorial dynasties known as the *mahajanapadas* from the sixth century BC (Figures 5–7). Engravers and sponsors of inscriptions sought to maximise the number of people exposed to the royal message, as seen in the fact that the HYDE map of population centres in AD 200 (more than 400 years after the placement of the edicts) was the probable result of populations that grew in size after Ashokan investment in those areas (cf. Shaw & Sutcliffe 2003: 86). Inscriptions are also located along the eastern coast of the subcontinent where Ashoka defeated the Kalinga polity and emplaced a particularly conciliatory set of inscriptions (Figure 1: 5 & 11). The third concentration of edicts is in the south-central peninsula, where scholars have long surmised that the inscriptions reflected the control, or attempted control, of rich mineral resources, including the Kolar gold fields (Thapar 2006: 298). The south-central subcontinent also presented a sophisticated audience for long-distance cultural contact, as suggested by the evidence for early trade and the use of script on portable objects (Rajan 2008), along with high population densities as indicated by large megalithic burial sites (Brubaker 2008).

Interestingly, there is at least one inscription in an area that does *not* appear to have a high spike of population density: Girnar, in the western subcontinent. This Ashokan inscription is made notable, however, by the presence of two later engraved texts in the same location: a lengthy hagiographical inscription by the local ruler Rudradaman in AD 150, identifying the construction of new irrigation canals, and another from *c.* AD 450 commemorating the construction of an embankment (Keay 2000: 130, 144; Lahiri 2011). Although Ashokan inscriptions are usually assumed to have been engraved during Ashoka's own lifetime, the presence of this exemplar far from obvious concentrations of population invites consideration of alternative explanations, such as the presence of an as yet unidentified resource (analogous to the southern Kolar gold fields), or the possibility that this otherwise anomalous edict could have been carved by a local ruler as a form of competitive emulation



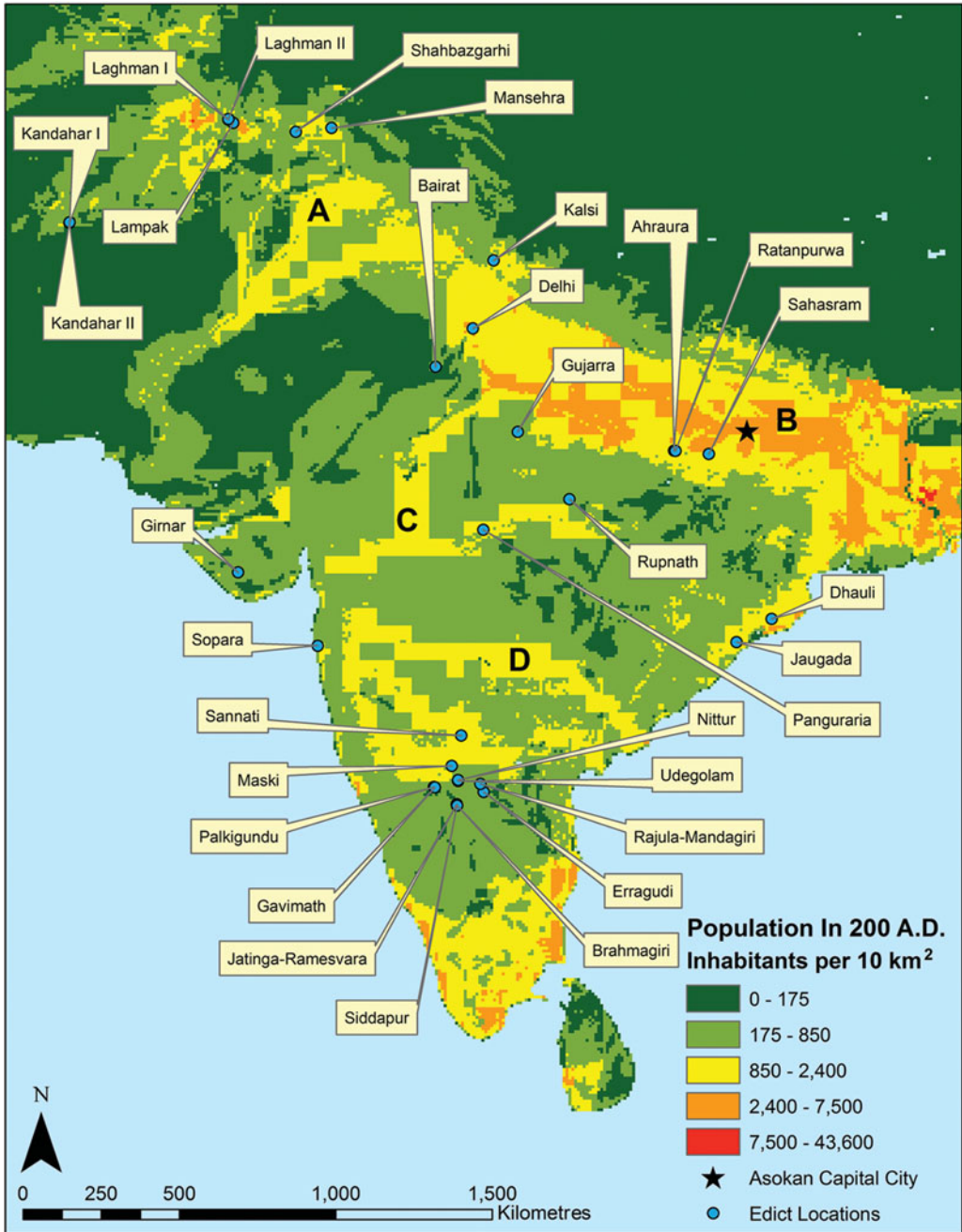
Data From: PBL Netherlands Environmental Assessment Agency- Hyde dataset

Figure 5. HYDE 3.1 data illustrating population density in 1000 BC, with the location of third-century BC living-rock Ashokan inscriptions.



Data From: PBL Netherlands Environmental Assessment Agency- Hyde dataset

Figure 6. HYDE 3.1 data illustrating population density in AD 0, the location of Ashokan living-rock inscriptions, and the Mauryan capital city of Pataliputra in the Ganges Valley. Locations A, B, C and D, discussed in the text, identify areas of high population density where no Ashokan rock inscriptions have yet been found.



Data From: PBL Netherlands Environmental Assessment Agency- Hyde dataset

Figure 7. HYDE 3.1 data illustrating population density and Ashokan living-rock inscriptions in AD 200.

(Norman (2012: 55) notes a number of alternate spellings present in the inscription). Alternatively, the inscription here may have been engraved long after the third century BC as part of the preparation for Rudradaman's proclamation.

The strong correlation of population density with the location of edicts points to six areas for further research. One area is in the farthest southern subcontinent, which was the domain of the Chola, Chera and Pandya dynasties of the late first millennium BC (Abraham 2003). Although investigations in this area should not be discouraged, the documented presence of non-Mauryan polities and the fact that more than a century of concerted archaeological investigation has never encountered Ashokan inscriptions are good predictors that edicts are unlikely to be found in this area. Another area is Sri Lanka, where the lack of edicts similarly indicates that the link between political and ritual investments was not straightforward; the lacuna is particularly interesting given Ashoka's documented ties to Sri Lanka via Buddhist emissaries, the presence of urban centres on the island, and the known use of writing contemporaneous to Ashoka's time (Coningham & Young 2015). Four other areas of HYDE-identified high-density population are more likely to yield as yet undiscovered Ashokan inscriptions (labelled A, B, C & D on Figures 6 & 7). Area A is the headwaters of the Indus River, midway between the Ashokan capital city of Pataliputra and the farthest western exemplars, now in Afghanistan (Kandahar, Laghman and Lampak). Area B is the foothills of the Himalayas in the immediate vicinity of Pataliputra and within the same length of radius as Sahasram, the closest known inscription to Pataliputra. In areas A and B, pillars might have substituted for living-rock inscriptions, particularly given the proximity of the Ashokan capital city and quarries suitable for the extraction of monoliths in area B. Systematic surveys in these regions should target not only living-rock areas close to natural corridors of transport, but should focus also on the potential for the repurposing of monolithic columns—which have variously been found used as road rollers (Falk 2006: 148–49) and worshipped as incarnations of deities (Falk 2006: 166).

Area C is the Narmada River Valley, an area known to have a long human occupational sequence, including the earliest identified hominid in the subcontinent (Sonakia 1985). The Narmada region subsequently had a high density of archaeological sites indicative of a potential target population for the political and religious authority expressed in the Ashokan inscriptions.

The final region of high population density identified by the HYDE 3.1 data is the Godavari River region of south-central India (point D). As with the Narmada River Valley, this region has a long record of human habitation, including as a settlement corridor for megalith-building populations starting in the early first millennium BC, succeeded by a strong Buddhist investment from the third century BC. The region also has a long tradition of archaeological research and investigation, including at the Buddhist site of Salihundam (Subrahmanyam 1964), and Thotlakonda and Bavikonda (Fogelin 2006). The Godavari region is located between two bands of known inscriptions on the eastern coast and in the south-central subcontinent; if sculptors were sent out from the Gangetic heartland towards the south, they would necessarily have passed through either the Narmada River region or the Godavari River region. Further investigations in these areas should also target corridors

of trade, given the close physical association of Buddhist monastic sites with economic activity (Ray 1986; Liu 1988).

Discussion

Population density alone is insufficient to predict the location of cultural phenomena, for which factors of preference, strategy and technological skill were integrated with specific features of local landscapes. In the case of the Ashokan living-rock edicts, for example, the highly selective placement of inscriptions would have been achieved by specific individuals (skilled stonemasons or engravers) who used specific criteria of landscape evaluation for placement (cf. Morrison & Lycett 1997: 224). These criteria would have included environmental cues such as the presence of suitable stone and cultural factors including the presence of roads and passages frequented by travellers, in addition to the location of population centres represented by cities, towns and Buddhist establishments.

Engravers would probably have been part of a small group, perhaps similar to the ‘travelling skilled artisans’ that Wayman and Rosen (1990: 52–53) have envisaged for the sculptors who embellished contemporary Buddhist monuments. The presence of a small group whose activities were limited to the Ashokan era (and hence indicative of training in both the textual contents and the execution of rock-cut lettering) is further suggested by the fact that the nature of inscriptions changed after the third century BC. Stone inscriptions continued to be profusely used for individual and collective donations to religious institutions. Royal living-rock texts are rare, however, and appear only in single exemplars (e.g. the Heliodorus pillar from the second century BC in central India (Singh 2008: 372) and the Udayagiri living-rock inscription of Kharavela from the first century BC in eastern India (Sahu 1984)), rather than as a series of repeated texts, as was the case with the Ashokan edicts.

Use of the comprehensive HYDE 3.1 dataset provides an important starting point to identify regions to search for additional Ashokan inscriptions. A systematic programme of research in targeted areas for discovery can make use of longstanding collaborations with local inhabitants, given that the South Asian archaeological and historical records are replete with examples in which previously unknown sites, manuscripts and artefacts have been discovered through the participation of non-academics. New technologies for recording and sharing data now provide the opportunity to increase the level of public participation in research through mobile technology and easy-to-use GIS applications that enable researchers to create massive datasets that lend robusticity to predictive models (Smith 2014). Such ‘citizen-science’ interfaces already exist in the subcontinent in disciplines such as botany and biology (e.g. India’s Common Bird project (Common Bird Monitoring of India n.d.)). In the case of stone inscriptions, images tagged with geo-locations—taken, for example, with mobile telephones—could allow researchers to systematically access ‘citizen’ sightings that could then be confirmed through follow-up visits by archaeologists and epigraphers; over time, the corpus of images could also provide a means of monitoring condition and preservation. The resurgence of interest in the Indian subcontinent as the homeland of Buddhism has greatly increased local and external participation in heritage

discovery, providing confidence that any newly found edicts will be a focus of protection (see [Figure 3](#): inset). Public recognition of such inscriptions is also key to their preservation; for example, the Bahapur inscription in the suburbs of Delhi was recognised by a contractor “as it was about to be blasted away for the development of a residential colony” (Joshi & Pande 1967: 96). Inscriptions themselves tend to become sacred in the landscape and, as such, well known to local inhabitants who could be encouraged to share their findings (cf. Suvrathan 2013).

Models can provide not only *new ways of looking* but also *new ways of thinking*, even for areas that are inaccessible to fieldwork, as described for Syria (Menze & Ur 2012) and Mongolia (Huyhn *et al.* 2013). The use of a comprehensive database such as HYDE 3.1 in the Indian subcontinent for both locational analysis and predictive modelling thus provides the opportunity to evaluate regional patterns where international collaborative research is hampered by logistical or political constraints. When ground-based survey is carried out by local teams, researchers can collectively benefit from distributed networks of investigation to recover data for continental-scale investigations. Archaeological fieldwork in the subcontinent demonstrates the existence of many as yet unrecorded inscriptions (e.g. Jayaswal 1998; Suvrathan 2013; [Kalra forthcoming](#)), such that a targeted search for Ashokan edicts could potentially yield a collateral harvest of other texts as well. Results can be fed into future iterations of HYDE-like models, fulfilling the call for “more comprehensive, spatially detailed, quantitative and accurate” data that can be used to address questions of regional and global land-use history (Ellis *et al.* 2013: 7983).

Conclusion

The Ashokan inscriptions of South Asia constitute one of the most galvanising examples of writing as a transformative ancient political technology. The inscriptions are also significant for the study of Buddhism, which is today a global religious tradition but was a small and relatively unknown sect prior to the royal support that it received from Ashoka. The HYDE 3.1-derived map of Ashokan edicts identifies several areas for systematic research: the upper Indus Valley; the Himalayan foothills adjacent to the Ashokan capital city; the Narmada River Valley; and the Godavari River Valley. In all of the South Asian countries in which edicts are known, there are still many areas in which little or no systematic archaeological fieldwork has ever been conducted, despite the presence of strong governmental agencies and many college and university departments of archaeology. The addition of newly discovered exemplars through targeted surveys and citizen science interaction would provide not only an increased tally of these significant texts but would also enable us to evaluate the nature of the political ties among regions in the time of the Indian subcontinent’s first ‘empire’ in the third century BC.

Acknowledgements

We would like to thank Rabindra Kumar Mohanty and Namita Sugandhi for conversations about the Ashokan inscriptions, Matt Zebrowski for comments on the figures, and Randall Law for helpful references to geological maps. We also greatly appreciate the insightful comments from Robin Coningham, Julia Shaw and the anonymous reviewers. Support was provided by the UCLA Office of the Vice Chancellor for Research in

the form of a Transdisciplinary Seed Grant to Smith and Gillespie. The location map on the title page of the article was provided by *Antiquity*.

References

- ABRAHAM, S. 2003. Chola, Chera, Pandya: using archaeological evidence to identify the Tamil kingdoms of Early Historic South India. *Asian Perspectives* 42: 207–23. <http://dx.doi.org/10.1353/asi.2003.0031>
- ALLCHIN, F.R. & K.R. NORMAN. 1985. Guide to the Ashokan inscriptions. *South Asian Studies* 1: 43–50. <http://dx.doi.org/10.1080/02666030.1985.9628331>
- BIAGI, P. 2006. The archaeological sites of the Rohri Hills (Sindh, Pakistan): the way they are being destroyed. *Web Journal of Cultural Heritage* 2: 77–95.
- BROWN, R.M. 2009. Reviving the past: post-Independence architecture and politics in India's long 1950s. *Interventions* 11(3): 293–315. <http://dx.doi.org/10.1080/13698010903255536>
- BRUBAKER, R. 2008. Regional perspectives on megalithic landscapes: investigating the socio-political dimensions of Late Prehistoric sites in central Karnataka and western Andhra Pradesh. *Antiquity* 82(317): Project Gallery. Available at: <http://www.antiquity.ac.uk/projgall/brubaker317/> (accessed 4 January 2016).
- CHAKRABARTI, D.K. 2011. *Royal messages by the wayside: historical geography of the Ashokan edicts*. New Delhi: Aryan.
- Common Bird Monitoring of India. n.d. Available at: <http://www.cbmi.in/> (accessed 4 January 2016).
- CONINGHAM, R.A.E. & R. YOUNG. 2015. *The archaeology of South Asia: from the Indus to Asoka, c. 6500 BCE–200 CE*. Cambridge: Cambridge University Press.
- CONINGHAM, R.A.E., K.P. ACHARYA, K.M. STRICKLAND, C.E. DAVIS, M.J. MANUEL, L.A. SIMPSON, K. GILLILAND, J. TREMBLAY, T.C. KINNAIRD & D.C.W. SANDERSON. 2013. The earliest Buddhist shrine: excavating the birthplace of the Buddha, Lumbini (Nepal). *Antiquity* 87: 1104–23. <http://dx.doi.org/10.1017/S0003598X00049899>
- DECAROLI, R. 2015. *Image problems: the origins and development of the Buddha's image in early South Asia*. Seattle: University of Washington.
- DERMODY, B.J., R.P.H. VAN BEEK, E. MEEKS, K. KLEIN GOLDEWIJK, W. SCHEIDEL, Y. VAN DER VELDE, M.F.P. BIERKENS, M.J. WASSEN & S.C. DEKKER. 2014. A virtual water network of the Roman world. *Hydrology and Early System Sciences* 18: 5025–40. <http://dx.doi.org/10.5194/hess-18-5025-2014>
- EDWARDS, P.N. 2003. Infrastructure and modernity: force, time, and social organization in the history of sociotechnical systems, in T.J. Misa, P. Brey & A. Feenberg (ed.) *Modernity and technology*: 185–225. Cambridge: Massachusetts Institute of Technology.
- ELLIS, E.C., J.O. KAPLAN, D.Q. FULLER, S. VAVRUS, K. KLEIN GOLDEWIJK & P.H. VERBURG. 2013. Used planet: a global history. *Proceedings of the National Academy of Sciences of the USA* 110: 7978–85. <http://dx.doi.org/10.1073/pnas.1217241110>
- FALK, H. 2006. *Aśokan sites and artefacts: a source-book with bibliography*. Mainz: von Zabern.
- 2013. Remarks on the Minor Rock Edict of Aśoka at Ratanpurwa. *Jñāna-Pravāha* 16: 29–48.
- FINN, J. 2011. Gods, kings, men: trilingual inscriptions and symbolic visualizations in the Achaemenid empire. *Ars Orientalis* 41: 219–75.
- FOGELIN, L. 2006. *Archaeology of early Buddhism*. Lanham (MD): AltaMira.
- FORD, A., K.C. CLARKE & G. RAINES. 2009. Modeling settlement patterns of the Late Classic Maya civilization with Bayesian methods and Geographic Information Systems. *Annals of the Association of American Geographers* 99(3): 496–520. <http://dx.doi.org/10.1080/00045600902931785>
- FULLER, D.Q., J. VAN ETTEN, K. MANNING, C. CASTILLO, E. KINGWELL-BANHAM, A. WEISSKOPE, L. QIN, Y.-I. SATO & R.J. HIJMANS. 2011. The contribution of rice agriculture and livestock pastoralism to prehistoric methane levels: an archaeological assessment. *The Holocene* special issue: 1–17. <http://dx.doi.org/10.1177/0959683611398052>
- HARMANŞAH, O. 2007. 'Source of the Tigris': event, place, and performance in the Assyrian landscapes of the Early Iron Age. *Archaeological Dialogues* 14: 179–204. <http://dx.doi.org/10.1017/S1380203807002334>
- HOUSTON, S. (ed.). 2004. *The first writing: script invention as history and process*. Cambridge: Cambridge University Press.
- HUYNH, A., K. PONTO, A.Y.-M. LIN & F. ALKO KUESTER. 2013. Visual analytics of inherently noisy crowdsourced data on ultra high resolution displays, in *2013 IEEE Aerospace Conference. Big Sky, Montana, March 2–9, 2013*: 1–8. Manhattan Beach (CA): IEEE Aerospace Conferences. <http://dx.doi.org/10.1109/AERO.2013.6497421>

- JAYASWAL, V. 1998. *From stone quarrying to sculpturing workshop: a report on the archaeological investigations around Chunar, Varanasi and Sarnath*. Delhi: Agam Kala Prakashan.
- JOSHI, M.C. & B.M. PANDE. 1967. A newly discovered inscription of Aśoka at Bahapur, Delhi. *Journal of the Royal Asiatic Society* 99: 96–98. <http://dx.doi.org/10.1017/S0035869X00125717>
- KALRA, K. Forthcoming. Taming the landscape: water management and settlement pattern in South India from ca. 12th to 16th centuries AD.
- KANG, B.W. 2006. Large-scale reservoir construction and political centralization: a case study from ancient Korea. *Journal of Anthropological Research* 62: 193–216. <http://dx.doi.org/10.3998/jar.0521004.0062.204>
- KEAY, J. 2000. *India: a history*. New York: Grove.
- KINTIGH, K.W., J.H. ALTSCHUL, M.C. BEAUDRY, R.D. DRENNAN, A.P. KINZIG, T.A. KOHLER, W.F. LIMP, H.D.G. MASCHNER, W.K. MICHENER, T.R. PAUKETAT, P. PREGRINE, J.A. SABLOFF, T.J. WILKINSON, H.T. WRIGHT & M.A. ZEDER. 2014. Grand challenges for archaeology. *American Antiquity* 79: 5–24. <http://dx.doi.org/10.7183/0002-7316.79.1.5>
- KLEIN GOLDEWIJK, K., A. BEUSEN & P. JANSSEN. 2010. Long-term dynamic modeling of global population and built-up area in a spatially-explicit way: HYDE 3.1. *The Holocene* 20: 565–73. <http://dx.doi.org/10.1177/0959683609356587>
- KLEIN GOLDEWIJK, K., A. BEUSEN, G. VAN DRECHT & M. DE VOS. 2011. The HYDE 3.1 spatially explicit database of human-induced global land-use change over the past 12,000 years. *Global Ecology and Biogeography* 20: 73–86. <http://dx.doi.org/10.1111/j.1466-8238.2010.00587.x>
- KVAMME, K.L. 1992. A predictive site location model on the high plains: an example with an independent test. *The Plains Anthropologist* 37(138): 19–40.
- LAHIRI, N. 2011. Revisiting the cultural landscape of Junagadh in the time of the Mauryas. *Purātattva* 41: 115–30.
- 2015. *Ashoka in ancient India*. Cambridge (MA): Harvard University Press.
- LIU, X. 1988. *Ancient India and ancient China: trade and religious exchanges AD 1–600*. New Delhi: Oxford University Press.
- MENZE, B.H. & J. UR. 2012. Mapping patterns of long-term settlement in northern Mesopotamia at a large scale. *Proceedings of the National Academy of Sciences of the USA* 109: E778–87. <http://dx.doi.org/10.1073/pnas.1115472109>
- MORRISON, K.D. & M.T. LYCETT. 1997. Inscriptions as artifacts: precolonial South India and the analysis of texts. *Journal of Archaeological Method and Theory* 4: 215–37. <http://dx.doi.org/10.1007/BF02428062>
- NORMAN, K.R. 1991. Aśokan inscriptions from Sannati. *South Asian Studies* 7(1): 101–10. <http://dx.doi.org/10.1080/02666030.1991.9628429>
- 2012. The languages of the composition and transmission of the Aśokan inscriptions, in P. Olivelle, J. Leoshko & H.P. Ray (ed.) *Reimagining Aśoka: memory and history*: 38–62. New Delhi: Oxford University Press.
- OLIVELLE, P., J. LEOSHO & H.P. RAY (ed.). 2012. *Reimagining Aśoka: memory and history*. New Delhi: Oxford University Press.
- PADDAYYA, K. 1996. Modern impacts on archaeological sites in India: a case study from the Shorapur Doab, Karnataka. *Man and Environment* 21(2): 75–88.
- PETERSON, C.A. & R.D. DRENNAN. 2012. Patterned variation in regional trajectories of community growth, in M.E. Smith (ed.) *The comparative archaeology of complex societies*: 88–137. Cambridge: Cambridge University Press.
- PRADO, J.L., J. ARROYO-CABRALES, E. JOHNSON, M.T. ALBERDI & O.J. POLACO. 2015. New World proboscidean extinctions: comparisons between North and South America. *Archaeological and Anthropological Sciences* 7: 277–88. <http://dx.doi.org/10.1007/s12520-012-0094-3>
- RAJAN, K. 2008. Situating the beginning of Early Historic times in Tamil Nadu: some issues and reflections. *Social Scientist* 36: 40–78.
- RAY, H.P. 1986. *Monastery and guild: commerce under the Satavahanas*. New Delhi: Oxford University Press.
- 2012. Archaeology and Aśoka: defining the empire, in P. Olivelle, J. Leoshko & H.P. Ray (ed.) *Reimagining Aśoka: memory and history*: 65–92. New Delhi: Oxford University Press.
- REAT, N.R. 1994. *Buddhism: a history*. Berkeley (CA): Asian Humanities.
- ROCKMAN, M. & J. STEELE (ed.). 2003. *Colonization of unfamiliar landscapes*. London: Routledge. <http://dx.doi.org/10.4324/9780203422908>
- SAHU, N.K. 1984. *Kharavela*. Bhubaneswar: Government of India Textbook Press.
- SELVAKUMAR, V. 2010. The use and relevance of archaeology in the post-modern world: views from India. *World Archaeology* 42: 468–80. <http://dx.doi.org/10.1080/00438243.2010.498664>
- SHAW, J. & J. SUTCLIFFE. 2003. Water management, patronage networks and religious change: new evidence from the Sanchi dam complex and counterparts in Gujarat and Sri Lanka. *South Asian Studies* 19: 73–104. <http://dx.doi.org/10.1080/02666030.2003.9628622>
- SINGH, U. 2008. *A history of ancient and early medieval India*. Delhi: Pearson Longman.

- 2012. Governing the state and the self: political philosophy and practice in the Edicts of Aśoka. *South Asian Studies* 28(2): 131–45. <http://dx.doi.org/10.1080/02666030.2012.725581>
- SMITH, M.L. 2005. Networks, territories and the cartography of ancient states. *Annals of the Association of American Geographers* 95: 832–49. <http://dx.doi.org/10.1111/j.1467-8306.2005.00489.x>
- 2014. Citizen science in archaeology. *American Antiquity* 79: 749–62. <http://dx.doi.org/10.7183/0002-7316.79.4.749749>
- SONAKIA, A. 1985. Skull cap of an early man from the Narmada Valley alluvium (Pleistocene) of Central India. *American Anthropologist* 87: 612–16. <http://dx.doi.org/10.1525/aa.1985.87.3.02a00060>
- STARK, B.L. & C.P. GARRATY. 2008. Parallel archaeological and visibility survey in the western lower Papaloapan Basin, Veracruz, Mexico. *Journal of Field Archaeology* 33: 177–96. <http://dx.doi.org/10.1179/009346908791071286>
- SUBRAHMANYAM, R. 1964. *Salihundam: a Buddhist site in Andhra Pradesh*. Hyderabad: Government of Andhra Pradesh.
- SUGANDHI, N.S. 2008. Between the patterns of history: rethinking Mauryani interaction in the southern Deccan. Unpublished PhD dissertation, University of Chicago.
- 2013. Conquests of Dharma: network models and the study of ancient polities, in J.F. Osborne & P. Van Vankenburg (ed.) *Territoriality in archaeology* (Archeological Papers of the American Anthropological Association 22): 145–63. Washington, D.C.: American Anthropological Association.
- SUVRATHAN, U. 2013. A fragmentary Brahmi inscription from Banavasi. *Puratattva* 43: 247–51.
- THAPAR, R. 1997 [1961]. *Aśoka and the decline of the Mauryas (with new afterword)*. New Delhi: Oxford University Press.
- 2004 [2002]. *Early India: from the origins to AD 1300*. Berkeley: University of California.
- 2006. The Mauryan empire in early India. *Historical Research* 79: 287–305. <http://dx.doi.org/10.1111/j.1468-2281.2006.00394.x>
- THAPLYAL, K.K.K. 2009. *A new Ashokan inscription from Ratanpurwa*. Varanasi: Jnana Pravaha.
- WATSON, A.A. 2011. Predictive modeling of archaeological site location in Cuba. Unpublished MA dissertation, Florida Atlantic University.
- WAYMAN, A. & E. ROSEN. 1990. The rise of Mahayana Buddhism and inscriptional evidence at Nagarjunakonda. *Indian Journal of Buddhist Studies* 2(1): 49–65.

Received: 26 August 2014; Accepted: 14 January 2015; Revised: 7 April 2015