

# UC San Diego

## UC San Diego Previously Published Works

### Title

Tissue-type plasminogen activator-primed human iPSC-derived neural progenitor cells promote motor recovery after severe spinal cord injury

### Permalink

<https://escholarship.org/uc/item/2jw0x45f>

### Journal

Scientific Reports, 9(1)

### ISSN

2045-2322

### Authors

Shiga, Yasuhiro

Shiga, Akina

Mesci, Pinar

et al.

### Publication Date

2019

### DOI

10.1038/s41598-019-55132-8

### Copyright Information

This work is made available under the terms of a Creative Commons Attribution License, available at <https://creativecommons.org/licenses/by/4.0/>

Peer reviewed

OPEN

# Tissue-type plasminogen activator-primed human iPSC-derived neural progenitor cells promote motor recovery after severe spinal cord injury

Yasuhiro Shiga<sup>1,2</sup>, Akina Shiga<sup>2</sup>, Pinar Mesci<sup>3</sup>, HyoJun Kwon<sup>1</sup>, Coralie Brifault<sup>1,4</sup>, John H. Kim<sup>1,5</sup>, Jacob J. Jeziorski<sup>3</sup>, Chanond Nasamran<sup>6</sup>, Seiji Ohtori<sup>2</sup>, Alysson R. Muotri<sup>3</sup>, Steven L. Gonias<sup>4</sup> & Wendy M. Campana<sup>1,7\*</sup>

The goal of stem cell therapy for spinal cord injury (SCI) is to restore motor function without exacerbating pain. Induced pluripotent stem cells (iPSC) may be administered by autologous transplantation, avoiding immunologic challenges. Identifying strategies to optimize iPSC-derived neural progenitor cells (*hiNPC*) for cell transplantation is an important objective. Herein, we report a method that takes advantage of the growth factor-like and anti-inflammatory activities of the fibrinolysis protease, tissue plasminogen activator tPA, without effects on hemostasis. We demonstrate that conditioning *hiNPC* with enzymatically-inactive tissue-type plasminogen activator (EI-tPA), prior to grafting into a T3 lesion site in a clinically relevant severe SCI model, significantly improves motor outcomes. EI-tPA-primed *hiNPC* grafted into lesion sites survived, differentiated, acquired markers of motor neuron maturation, and extended  $\beta$ III-tubulin-positive axons several spinal segments below the lesion. Importantly, only SCI rats that received EI-tPA primed *hiNPC* demonstrated significantly improved motor function, without exacerbating pain. When *hiNPC* were treated with EI-tPA in culture, NMDA-R-dependent cell signaling was initiated, expression of genes associated with stemness (Nestin, Sox2) was regulated, and thrombin-induced cell death was prevented. EI-tPA emerges as a novel agent capable of improving the efficacy of stem cell therapy in SCI.

Stem cell therapy may be effective for treating patients with spinal cord injury (SCI). Substantial work has been conducted with embryonic neural stem cells (NSC) in animal models of SCI<sup>1–3</sup>. An alternative approach is to graft induced pluripotent stem cells (iPSC), which are pre-conditioned to generate lineage committed neural progenitor stem cells (NPC)<sup>4–6</sup>. iPSC are derived from skin<sup>5</sup>, dental pulp<sup>6–8</sup>, or blood cells<sup>9</sup> and may be re-administered to patients by autologous transplantation. Grafting human iPSC-derived NPC (*hiNPC*) in patients with SCI avoids immunological and ethical complications associated with embryonic NSC.

*hiNPC* have shown efficacy in restoring motor function in rodent models of moderate lower thoracic (T9–T10) SCI<sup>10–12</sup>. In a severe cervical rodent model of SCI, grafted iPSC-derived NSC developed axons, which emerged from the implantation site and formed synapses with host spinal cord neurons; however, significant recovery of motor function was not observed<sup>13</sup>. It is not clear whether this result reflects the NSC phenotype<sup>14</sup>, insufficient optimization of the grafting method, or the severity of the SCI model. Accordingly, more studies are needed to understand *hiNPC* biology and to improve methodologies for successful *hiNPC* transplantation.

<sup>1</sup>Department of Anesthesiology, University of California San Diego, La Jolla, CA, 92093, USA. <sup>2</sup>Department of Orthopaedic Surgery and Graduate School of Medicine, Chiba University, Chiba, 260-8670, Japan. <sup>3</sup>Departments of Pediatrics and Cellular and Molecular Medicine, and the Stem Cell Program, University of California, San Diego, CA, 92037-0695, USA. <sup>4</sup>Department of Pathology, University of California San Diego, La Jolla, CA, 92093, USA. <sup>5</sup>Department of Chemistry, University of California, San Diego, La Jolla, CA, 92093, USA. <sup>6</sup>Center for Computational Biology & Bioinformatics (CCBB), University of California, San Diego, La Jolla, CA, 92093, USA. <sup>7</sup>Veterans Administration San Diego HealthCare System, San Diego, CA, 92161, USA. \*email: [wcampana@health.ucsd.edu](mailto:wcampana@health.ucsd.edu)

The goal of this research project was to identify strategies for optimizing the efficacy of *hiNPC* as a treatment for severe SCI.

Tissue-type plasminogen activator (tPA) is an activator of fibrinolysis and globally approved drug for treating non-hemorrhagic stroke<sup>15</sup>. The activity of tPA in fibrinolysis and stroke is based on its function as a protease<sup>16</sup>; however, recombinant tPA also interacts with cellular receptors such as the N-methyl-D-aspartate Receptor (NMDA-R)<sup>17,18</sup> and LDL Receptor-related Protein-1 (LRP1)<sup>19</sup> to mediate changes in cell physiology that are independent of its protease activity and potentially relevant to the challenges of stem cell therapy. tPA is neuro-protective towards cortical neurons<sup>20</sup> and promotes neurite outgrowth in neurons and neuron-like cells by activating cell-signaling factors such as c-Src and ERK1/2<sup>21,22</sup>. tPA also may regulate innate immunity by suppressing Toll-like Receptor responses<sup>23</sup>. These activities are replicated by enzymatically-inactive (EI) tPA.

In the normal CNS, tPA is present in pre-synaptic vesicles<sup>24</sup> and secreted by neuronal growth cones, where it functions to promote synaptic plasticity, axonal elongation, and path-finding<sup>25</sup>. tPA expression is increased in Purkinje neurons during motor task training and has been implicated in activity-based cerebellar motor learning<sup>26</sup>. Collectively, these studies demonstrate that in addition to its role in fibrinolysis, tPA functions like a growth factor, eliciting receptor-mediated effects on cell-signaling and gene expression in various cells including motor neurons and neuron-like cells. The activity of tPA in iPSC and *hiNPC* has not been examined.

In this study, we tested whether the growth factor-like activities of EI-tPA may be exploited to improve the efficacy of transplanted iPSC-derived *hiNPC* in severe SCI in rats. We used a severe T3 SCI model (T3SCI), which induces motor loss and neuropathic pain<sup>27</sup> and thus, models SCI in patients<sup>28</sup>. Our results demonstrate significant improvement in motor function in rats grafted with *hiNPC*, only when these cells are primed by treatment with EI-tPA. Cell fate mapping confirmed axon extension and differentiation of EI-tPA-treated *hiNPC* into motor neurons. EI-tPA induced cell-signaling in *hiNPC* *in vitro* and regulated expression of genes in *hiNPC*, including Nestin and Sox2. We conclude that EI-tPA primes *hiNPC* and improves functional regeneration in SCI. Because these activities are elicited with the EI derivative of tPA, abnormalities in hemostasis are not a concern.

## Results

***hiNPC* respond to EI-tPA *in vitro*.** We characterized *hiNPC*, which are iPSC-derived, lineage committed NPC<sup>5,6</sup>. Immunofluorescence analysis demonstrated that *hiNPC* (C6WT183) in culture express the stemness biomarker, Nestin, to a greater extent than human Schwann cells (*hSC*), which were analyzed as a control (Fig. 1a). RT-qPCR confirmed that the mRNAs encoding Nestin and Sox2 are greatly enriched in *hiNPC* compared with *hSC* (Fig. 1b). The pre-neuronal marker, CD24, also was abundantly expressed by *hiNPC*. Thus, *hiNPC* expressed stem cell and pre-neuronal markers prior to grafting, as anticipated.

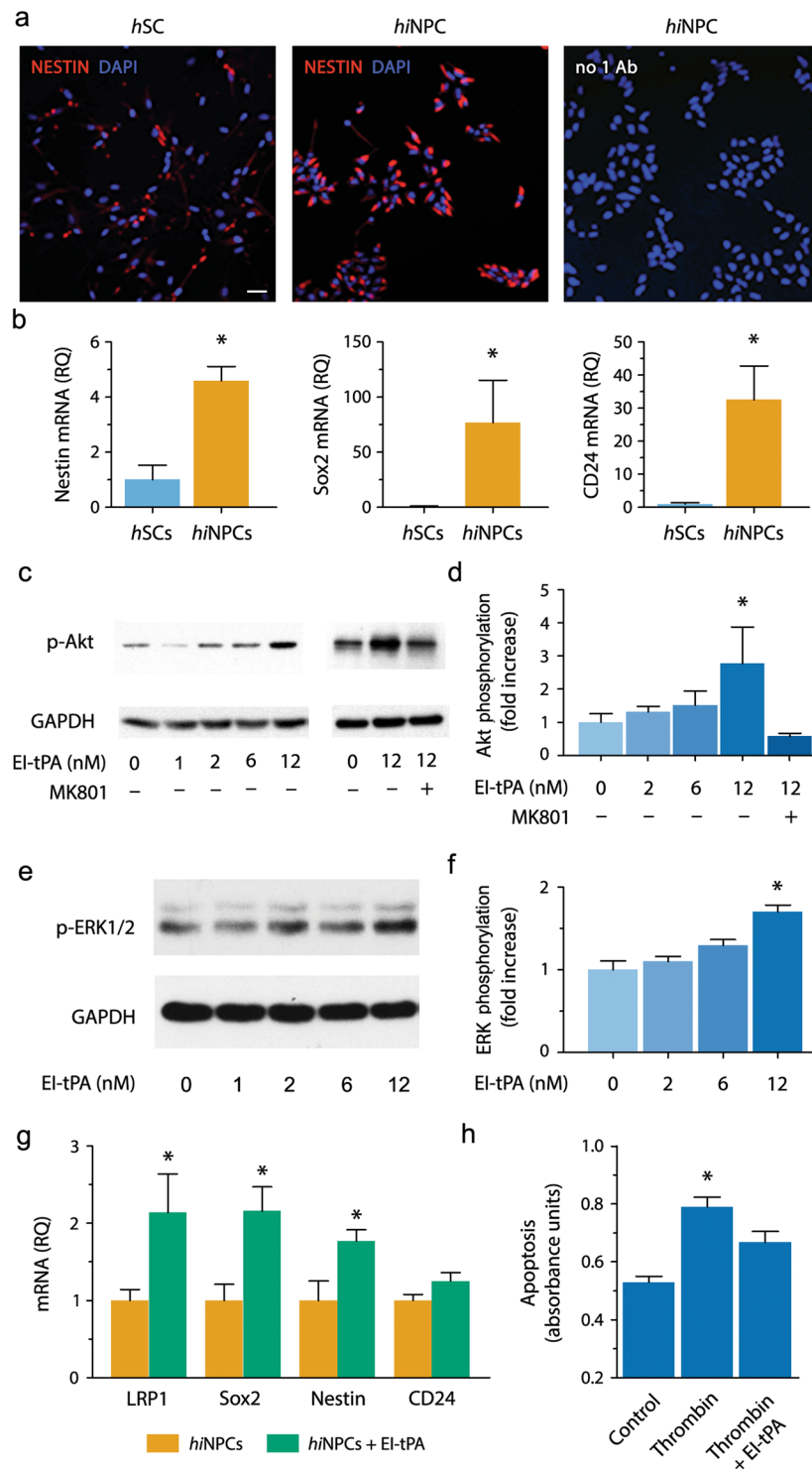
Next, we examined whether EI-tPA elicits cell-signaling in cultured *hiNPC*. *hiNPC* were serum-starved and subsequently treated with EI-tPA (0–12 nM). In *hiNPC* treated with 12 nM EI-tPA, the survival-promoting cell-signaling factor, Akt (M.W.60 kDa), was phosphorylated within 15 min (Fig. 1c). MK-801 blocked Akt phosphorylation by EI-tPA, suggesting an essential role for the NMDA-R<sup>19,21,23</sup>. Densitometry analysis of five separate experiments demonstrated that the increase in Akt phosphorylation induced by EI-tPA and the effects of MK-801 were statistically significant ( $P < 0.05$ ; Fig. 1d). EI-tPA (12 nM) also activated ERK1/2 (M.W. 42 and 44 kDa) in *hiNPCs* ( $P < 0.05$ ; Fig. 1e,f).

We also identified the effects of EI-tPA on *hiNPC* gene expression. *hiNPC* were treated with 12 nM EI-tPA for 48 h. Expression of the stemness biomarkers, Nestin and Sox2, was significantly increased (Fig. 1g). Expression of LRP1, which serves as a co-receptor in EI-tPA-induced NMDA-R-dependent cell-signaling<sup>19,22</sup>, also was increased, whereas CD24 was unchanged. In trypan blue exclusion assays, thrombin, a known inducer of neuronal cell death<sup>29,30</sup>, dose-dependently decreased *hiNPC* viability (Fig. S1a). EI-tPA (12 nM) blocked cell death mediated by thrombin (5 units/mL) in cultured *hiNPC* ( $P < 0.05$ ; Fig. S1b). Cell Death Elisa™ studies confirmed that the viability of *hiNPC* was decreased by thrombin and rescued by EI-tPA ( $P < 0.05$  Fig. 1h). Increased expression of Sox2 provides one explanation for improved resistance of EI-tPA-treated *hiNPC* to apoptosis<sup>31</sup>.

To confirm that our results with EI-tPA and *hiNPCs* are representative of *hiNPCs* in general, we tested a second iPSC-derived *hiNPC* line from a different patient (C5WT126). A similar characterization pattern, including expression of the stem cell biomarkers, Nestin, Pax6 and Brn2, was observed in both the first and second *hiNPC* clones (Fig. S2). When the second clone was treated with 12 nM EI-tPA, Akt was phosphorylated within 15 min and this response was blocked by MK801 (1.0 μM) (Fig. S3). Glycogen synthase kinase 3β (GSK-3β) was phosphorylated in response to EI-tPA, as was ERK1/2. These phosphorylation events also were inhibited by MK-801 (Fig. S3), confirming an essential role for the NMDA-R<sup>19,21,23</sup>, as anticipated<sup>17,18,23</sup>.

***hiNPC* improve locomotor activity in severe SCI only when pre-treated with EI-tPA.** Next, we suspended *hiNPC* in fibrin and grafted the cells into immunodeficient rats one week following T3 spinal cord compression injury (T3SCI). Histologically, T3SCI generates a band of disrupted parenchyma across the compression site with partial cavitation<sup>27</sup>. Thirteen rats were grafted with GFP-expressing *hiNPC* that were pre-treated with EI-tPA (12 nM) for 15 min. Eleven rats were grafted with GFP-expressing *hiNPC* that were not treated with EI-tPA. Eleven additional control rats were grafted with cell-free vehicle. All grafts contained a lower concentration of thrombin, compared with that previously used<sup>13</sup> given the potential for thrombin to cause cell stress and cell death (Fig. 1h). The grafting timepoint was selected for clinical relevance to SCI patients undergoing decompression and stabilization<sup>32</sup>.

Rats subjected to T3SCI had complete hindlimb paralysis within a day after injury. T3SCI caused substantial loss of motor function, when assessed two weeks post-injury, as determined using the Basso, Beattie and Bresnahan (BBB) locomotor scale (Fig. 2a)<sup>33</sup>. BBB scores were <2. By 3 weeks, rats without grafted *hiNPC* recovered to a BBB score of 4 but failed to improve beyond a BBB score of 5 for the duration of the study (4 months), consistent with previous results<sup>27</sup>.



**Figure 1.** Bioactivity of EI-tPA in *hiNPC* *in vitro*. (a) Representative IF microscopy images of *hiNPCs* and *hSCs* immunostained to detect Nestin (red) and labeled with DAPI (blue) ( $n = 3$  per group). As a control, *hiNPC* were incubated with secondary antibody only and with DAPI (right-hand panel). Scale bar 40  $\mu\text{m}$ . (b) mRNAs encoding Nestin, Sox2, and CD24 in *hiNPC* and *hSCs*. Human EID2 mRNA was quantified as a normalizer ( $*P < 0.05$  by Student's *t*-test, mean  $\pm$  SEM;  $n = 4$ ). (c) *hiNPC* were treated with EI-tPA (0–12 nM) for 15 min ( $n = 3$  independent studies). In some wells, MK801 (1  $\mu\text{M}$ ) was added prior to EI-tPA ( $n = 2$  independent studies). Equal amounts of cellular protein (20  $\mu\text{g}$ ) were subjected to immunoblot analysis to detect phospho-Akt and GAPDH. (d) Akt phosphorylation immunoblots were subjected to densitometry. Levels of phospho-Akt were standardized using GAPDH ( $*P < 0.05$  by one-way ANOVA, Neuman Keuls *post hoc* test, mean  $\pm$  SEM). (e) *hiNPC* in culture were treated with EI-tPA (0–12 nM). ERK1/2 phosphorylation and total ERK1/2 were determined. (f) Densitometry analysis of phospho-ERK1/2 and GAPDH ( $*P < 0.05$  by one-way ANOVA followed by Neuman Keuls *post hoc* test, mean  $\pm$  SEM;  $n = 3$  independent experiments). (g) Cultured

*hiNPC* were treated EI-tPA (12 nM) or vehicle for 48 h. RT-qPCR was performed to compare mRNA levels for Nestin, Sox2, CD24, and LRP1 (\* $P < 0.05$  by Student *t*-test, mean  $\pm$  SEM;  $n = 5$  replicates per group;). (h) *hiNPC* were treated with thrombin (5 units/mL), in the presence of vehicle or 12 nM EI-tPA for 18 hours. Cell extracts were analyzed using the Cell Death ELISA (\* $P < 0.05$  by one-way ANOVA with a Neuman Keuls *post-hoc* test, mean  $\pm$  SEM;  $n = 3$ –8 replicates per group).

Rats that were subjected to T3SCI and grafted with *hiNPC* demonstrated a trend towards improved BBB scores beginning at 3–6 weeks; however, throughout the 16-week observation period, statistical significance was not achieved. In rats grafted with EI-tPA-treated *hiNPC*, BBB scores were further improved and the effects of EI-tPA-treated *hiNPC* on motor function achieved statistical significance. BBB scores of approximately 15 were recorded at 16 weeks ( $P < 0.01$ ; Fig. 2a). Representative video imaging of rats subjected to T3SCI (Movie S1) and grafted with EI-tPA-treated *hiNPC* demonstrated obvious improvements compared with rats that were grafted with untreated *hiNPC* (Movies S2, S3). The significant effects of EI-tPA on the efficacy of grafted *hiNPC* were confirmed by analyzing total body weight (Fig. 2b) and tibialis anterior leg muscle weight (Fig. 2c), parameters known to correlate with motor recovery following SCI<sup>34</sup>.

***hiNPC* survive and differentiate in injured spinal cords.** Grafted *hiNPC* survived and filled the SCI lesion cavity. Immunostaining for hNu, which specifically detects human nuclei, showed a three-fold increase in the number of *hiNPC* in the EI-tPA-treated group ( $P < 0.05$ ) 8 weeks after T3SCI, suggesting greater survival and/or *hiNPC* proliferation (Fig. 3a,b). At 16 weeks, the number of grafted *hiNPC* in the EI-tPA-treated group remained two-fold higher ( $P < 0.05$ ; Fig. 3b). Importantly, the mean size of the hNu<sup>+</sup> nuclei was significantly increased in grafts of EI-tPA-treated *hiNPC*, compared with animals that received untreated *hiNPC* (~40  $\mu$ m vs. ~25  $\mu$ m) ( $P < 0.05$ ; Fig. 3a,c). Nuclear hypertrophy is an indicator of cell maturation<sup>3</sup>.

Nestin is a nucleo-cytoplasmic shuttling protein that may serve as an indicator of *hiNPC* differentiation<sup>35</sup>. At 8 weeks, Nestin immunoreactivity was most intense in the peri-nuclear area of GFP-expressing EI-tPA-treated *hiNPC*, however, untreated *hiNPC* demonstrated Nestin immunoreactivity only in cytoplasmic processes (Figs. 3d and S4). At 16 weeks, perinuclear nestin immunoreactivity was observed in *hiNPC* that were not EI-tPA-treated. Thus, *hiNPC* may have undergone a similar transition in nestin subcellular localization irrespective of whether EI-tPA is present. EI-tPA may have accelerated the transition.

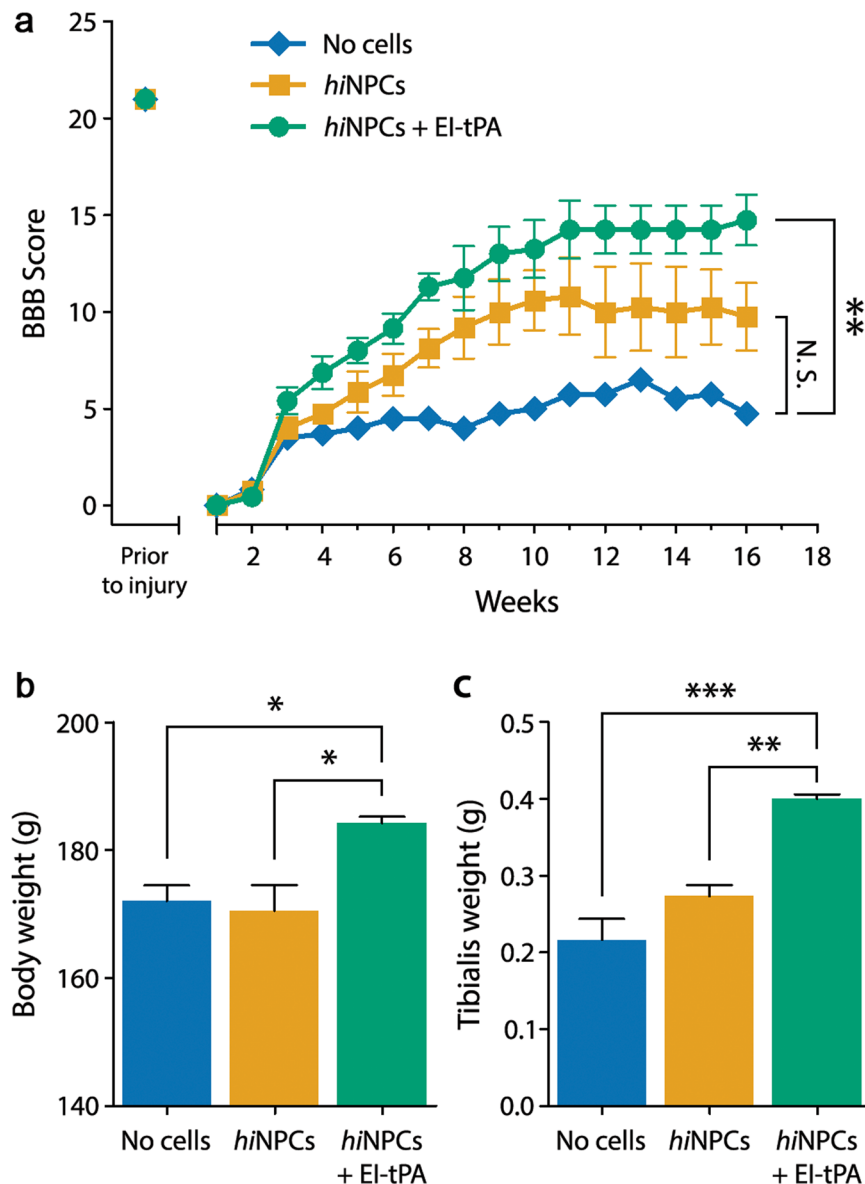
To determine whether *hiNPC*s extend and integrate into the host spinal cord, we examined longitudinal sections beginning at the injury site and extending caudally  $\beta$ III tubulin-positive axons emerged from the lesion site and co-localized with GFP immunoreactivity in rats grafted with untreated *hiNPC*s or EI-tPA-treated *hiNPC*s (Fig. 4a,b). Next, we compared transverse T7 sections isolated from rats grafted with untreated *hiNPC*s or EI-tPA-treated *hiNPC*s to determine whether EI-tPA promoted axonal extension. Although GFP immunopositivity was detected in the white and gray matter in both experimental groups, in rats grafted with EI-tPA-treated *hiNPC*s, GFP immunoreactivity appeared substantially increased in the T7 spinal segment (dorsal and ventral areas) (Fig. 4d,e). Quantification of total GFP-immunopositive tissue in the T7 ventral segment showed a 3-fold increase in rats grafted with EI-tPA-treated *hiNPC*s ( $P < 0.05$ ; Fig. 4c). Given the size of the immunoreactive projections (<2  $\mu$ m) and lack of co-localization of GFP with DAPI, the GFP most likely represents *hiNPC*-derived axons and not migrating glia.

To confirm that *hiNPC* expressed a neuronal phenotype, we performed dual-label immunofluorescence for GFP and  $\beta$ III tubulin-positive projections in T7 transverse sections. SCI rats treated with *hiNPC*s in the absence of EI-tPA expressed some  $\beta$ III tubulin (Fig. 4f) and GFP immunoreactivity (Fig. 4h) in the spinal ventral horn, however, minimal colocalization was apparent (Fig. 4j,l). By contrast, SCI rats grafted with EI-tPA-treated *hiNPC* robustly expressed  $\beta$ III tubulin (Fig. 4g) and GFP immunoreactivity (Fig. 4i) in the spinal ventral horn. The majority of GFP co-localized with  $\beta$ III tubulin (Fig. 4k,m). These findings indicate that EI-tPA-treated *hiNPC* grafted into the lesion site extend neuronal projections four segments distal to the lesion site after 4 months.

Cell fate mapping studies at the lesion site revealed that *hiNPC* acquire a neuron phenotype. *hiNPC* identified by hNu<sup>+</sup> (as shown in Fig. 3a) co-localized with the neuron specific cytoskeletal protein MAP2 in lesion sites (Fig. 5a). This was observed in both *hiNPC* grafts alone and EI-tPA-treated *hiNPC* grafts. At 8 weeks, the motor neuron marker, choline acetyltransferase (ChAT), co-localized with GFP and hNu (Fig. 5b) in EI-tPA-treated *hiNPC*s. Motor Neuron and Pancreas Homeobox 1 (HBP/MNX1), a second motor neuron marker found in nuclei<sup>36</sup>, also co-localized with GFP and hNu (Fig. 5c). GFP-expressing, EI-tPA-treated *hiNPC* failed to co-localize with GFAP in the lesion site (Fig. 5d) and distal to the lesion site (Fig. 5e), suggesting that the *hiNPC* did not become astrocytes.

**Noiception in rats subjected to T3SCI and treated with *hiNPC* with and without EI-tPA.** To test whether rats grafted with *hiNPC* develop altered sensation to light touch, which may indicate exacerbation of injury-associated neuropathic pain, we performed hindpaw tactile allodynia testing 8 weeks post-T3SCI, when motor improvement was underway. Prior to T3SCI, rats had a mean paw withdrawal threshold (PWT) of 15.7  $\pm$  0.9 g (Fig. 6a). Eight weeks after T3SCI, the PWT was reduced to 8.1  $\pm$  0.9 g in rats that received no *hiNPC*, indicating allodynia. Importantly, the extent and magnitude of allodynia was not altered by *hiNPC* or by EI-tPA-treated *hiNPC* through the duration of the study (8–16 weeks post-T3SCI).

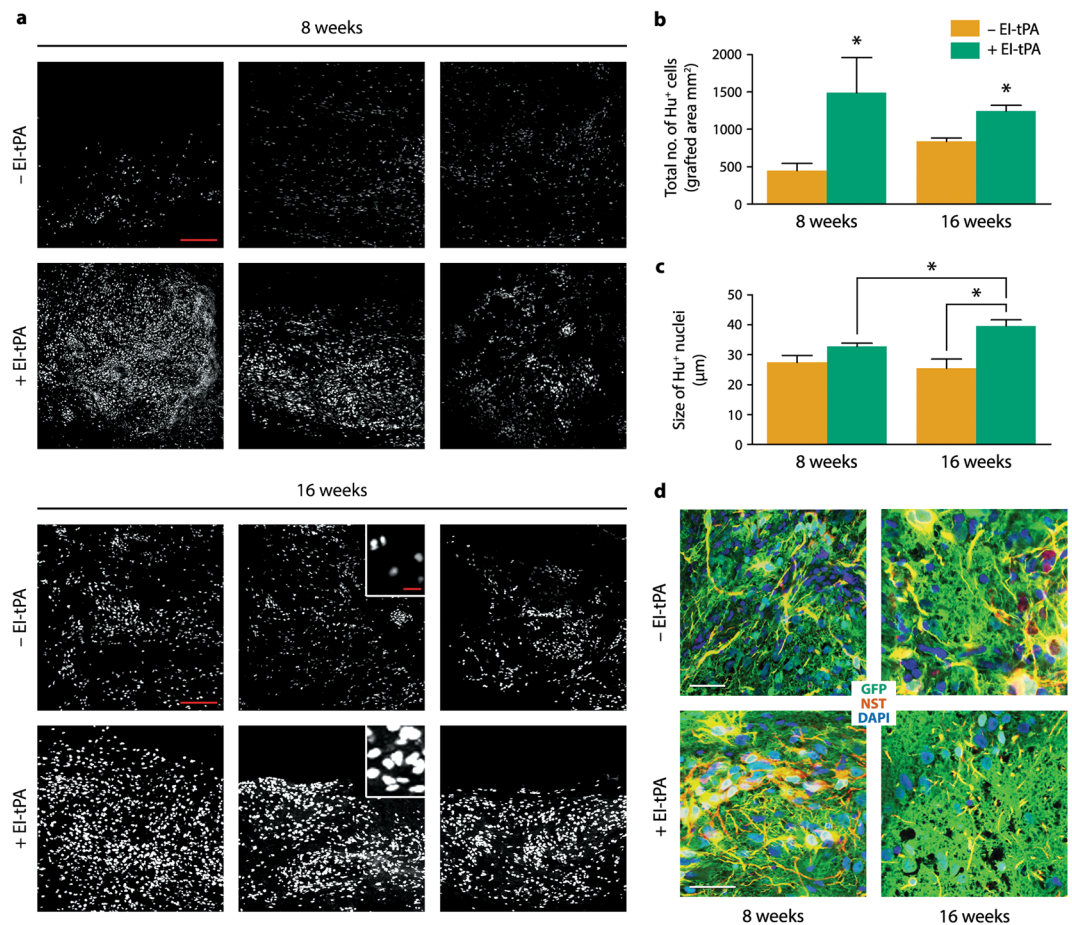
To mine for changes in gene expression that might predict altered somatosensory function, we performed RNA-Seq analysis of DRGs 16 weeks post-T3SCI and grafting of *hiNPC*s. Control animals were subjected to T3SCI but not grafted. Differentially expressed (DE) genes were identified and expressed as logFC (Fig. 6b). Amongst the top 25 regulated genes, RNA-Seq identified the known pain-related genes, KCNN1 and VIP



**Figure 2.** *hiNPC* primed with EI-tPA enhance motor recovery in T3SCI after four months. (a) BBB scores in rats grafted with *hiNPC* (yellow) or EI-tPA-treated *hiNPC* (green) or vehicle (no cell control) (blue) after T3SCI (\*\* $P < 0.01$  by repeated measures ANOVA followed by Bonferroni *post-hoc* test, mean  $\pm$  S.E.M;  $n = 14$  animals). (b) Body weights in rats grafted with vehicle (no cell control) (blue), *hiNPC* (yellow), or EI-tPA-treated *hiNPC* (green) after T3SCI (\* $P < 0.05$  by one-way ANOVA and Tukey's *post-hoc* test, mean  $\pm$  S.E.M;  $n = 18$  animals). (c) Tibialis anterior muscle weight in rats grafted with vehicle (no cell control) (blue), *hiNPC* (yellow) or EI-tPA-treated *hiNPC* (green) after T3SCI (\*\* $P < 0.01$ ; \*\*\* $P < 0.001$  by one-way ANOVA and Tukey's *post-hoc* test, mean  $\pm$  S.E.M;  $n = 18$  animals).

(Table S1). To validate KCNN1 and VIP as genes regulated in the DRG in response to *hiNPC* grafting at the SCI site, RT-qPCR was performed. At 8 weeks, expression of KCNN1 or VIP was not significantly different in the control and *hiNPC*-treated groups (Fig. 6c). However, 16 weeks post-SCI, KCNN1 mRNA was decreased in the *hiNPC*-treated group, whereas VIP mRNA was increased ( $P < 0.05$ ; Fig. 6c). These changes in DRG gene expression suggest that *hiNPC* may, in the long term, induce changes in somatosensory function that were not detected in our tactile allodynia experiments.

Forepaw tactile allodynia was also studied since neuropathic pain may be observed above or at the level of injury<sup>27</sup>. Prior to T3SCI, control rats had a mean forepaw PWT of  $15.1 \pm 1.0$  g (Fig. 5d). Four weeks after SCI, the PWT in control rats was  $9.2 \pm 0.8$  g. Rats grafted with *hiNPC* or EI-tPA-treated *hiNPC* showed no significant differences in forepaw PWTs over the 16-week monitoring period, indicating that neuropathic pain was not exacerbated or mitigated by the *hiNPC*.



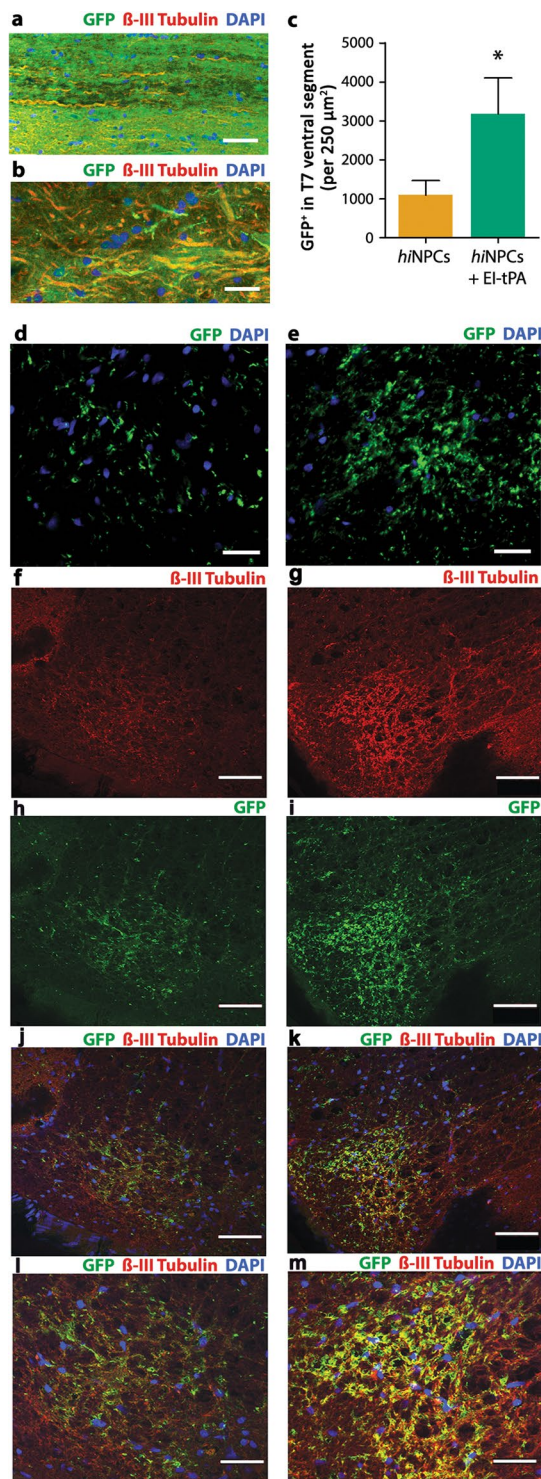
**Figure 3.** *hiNPC* survival and maturation *in vivo* are enhanced by EI-tPA. **(a)** Fluorescent images of the human nucleus marker, hNu<sup>+</sup> (white), in T3SCI lesion sites with *hiNPC* and EI-tPA-treated *hiNPC* at 8 and 16 weeks. Each panel represents an individual rat. Scale bars for low power (200X) images in **(a)** are 200 μm and for insets are 25 μm. **(b)** Quantification of hNu<sup>+</sup> cells in lesions with *hiNPC* (yellow) and EI-tPA-treated *hiNPC* (green) at 8 and 16 weeks (\* $P < 0.05$  by Student's *t*-test, mean  $\pm$  SEM;  $n = 3$  per group). **(c)** Quantification of the size of hNu<sup>+</sup> nuclei of EI-tPA-treated *hiNPC* versus untreated *hiNPC* (\* $P < 0.05$  by Student's *t*-test, mean  $\pm$  SEM;  $n = 3$  per group). **(d)** Dual label immunofluorescence of GFP in *hiNPCs* (green) and the stem cell marker, Nestin (red), shows colocalization in grafted *hiNPC*. Nuclei are labeled with DAPI (blue). Scale bars for images (400X) are 50 μm.

## Discussion

This study demonstrates that the efficacy of *hiNPC* in facilitating SCI repair and recovery of motor function may be significantly improved by treating the *hiNPC* with EI-tPA. Compared with untreated *hiNPC*, EI-tPA-treated *hiNPC* demonstrated improved survival and maturation at the SCI lesion site and a significant increase in the number of axons projecting caudally into spinal segment T7. Although a trend towards improved motor function was observed in animals grafted with untreated *hiNPC*, the magnitude and extent of the response to *hiNPC* grafting was statistically significant only when the *hiNPC* were EI-tPA-primed. To our knowledge, this is the first study showing beneficial effects of EI-tPA on neural progenitor cells and in particular, *hiNPC*, *in vitro* and *in vivo*.

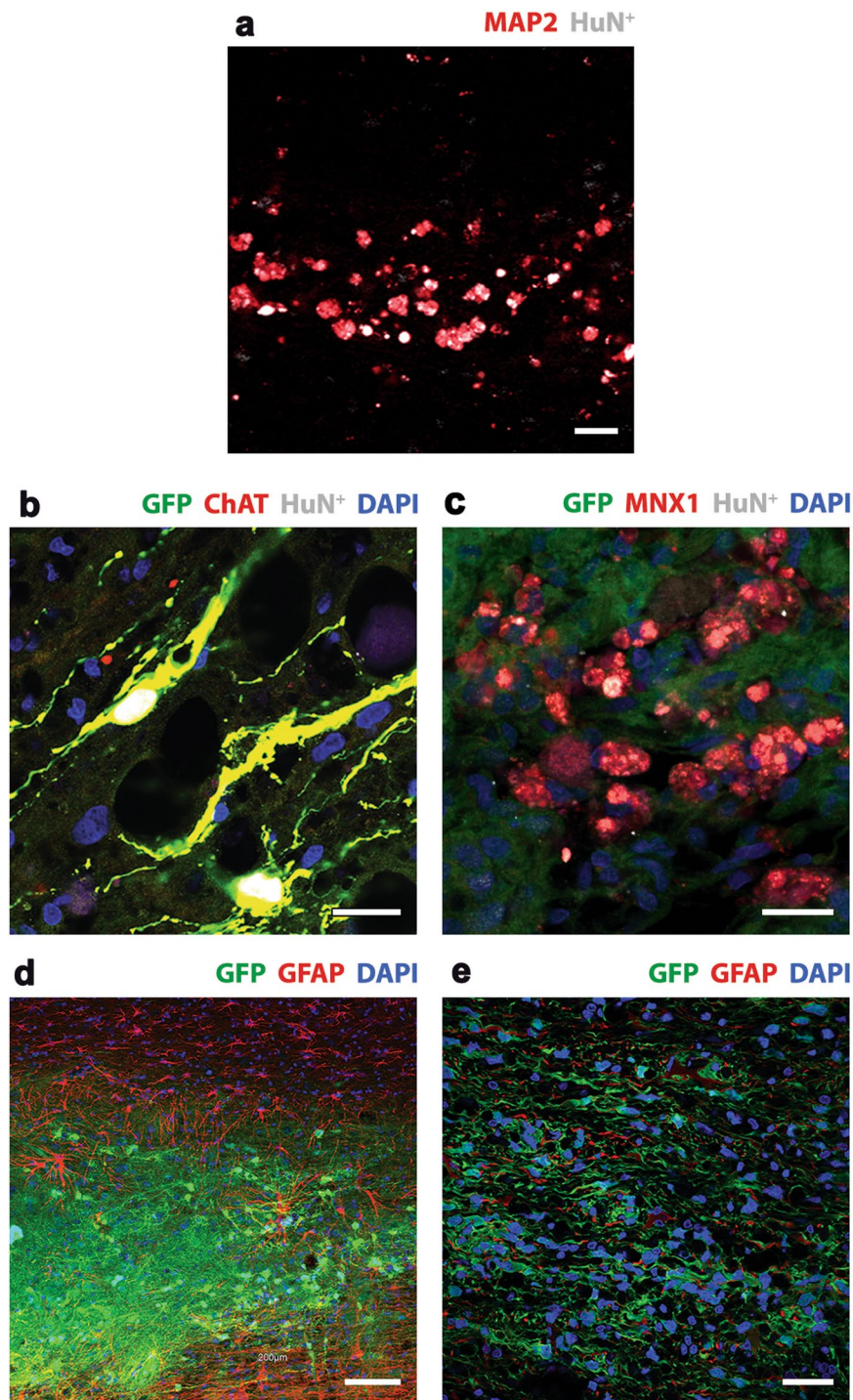
In studies with cells in culture, we showed that EI-tPA activates cell-signaling cascades in *hiNPC* that are associated with cell survival and dependent on the NMDA-R. In addition to its role as an ionotropic glutamate receptor, the NMDA-R is a known cell-signaling receptor for tPA, which may function in conjunction with LRP1<sup>17–19,22</sup>. EI-tPA increased expression of LRP1 mRNA in *hiNPC*, which may support or amplify tPA-dependent cell signaling and cell survival. LRP1 is a potent cell survival receptor for Schwann cells<sup>37</sup>. Cooperation between LRP1 and the NMDA-R in EI-tPA-signaling in *hiNPC* suggests that this receptor system is conserved in diverse cell types.

When *hiNPC* were challenged with thrombin *in vitro*, an inducer of cell death in neurons<sup>29,30</sup> and a component of the SCI grafting cocktail, EI-tPA protected the *hiNPC* from cell death. EI-tPA-dependent cell signaling also increased expression of stem cell markers, Sox2 and Nestin. Accumulating evidence suggests that when stem cells express increased levels of the stemness factors, Sox2 and Oct4, they have a greater intrinsic resistance towards apoptosis<sup>31</sup>. Pre-treating *hiNPC* with EI-tPA prior to grafting may protect these cells from the challenging, pro-inflammatory SCI microenvironment. The hypothesis that EI-tPA may promote *hiNPC* survival *in vivo* in SCI is supported by the work of LeMarchand *et al.*<sup>38</sup>, demonstrating neuroprotective effects of tPA on stressed postnatal neurons. Nonetheless, the effects we observed in our studies with EI-tPA and *hiNPC* in culture is likely dictated by the *in vitro* niche and should be interpreted with this perspective.

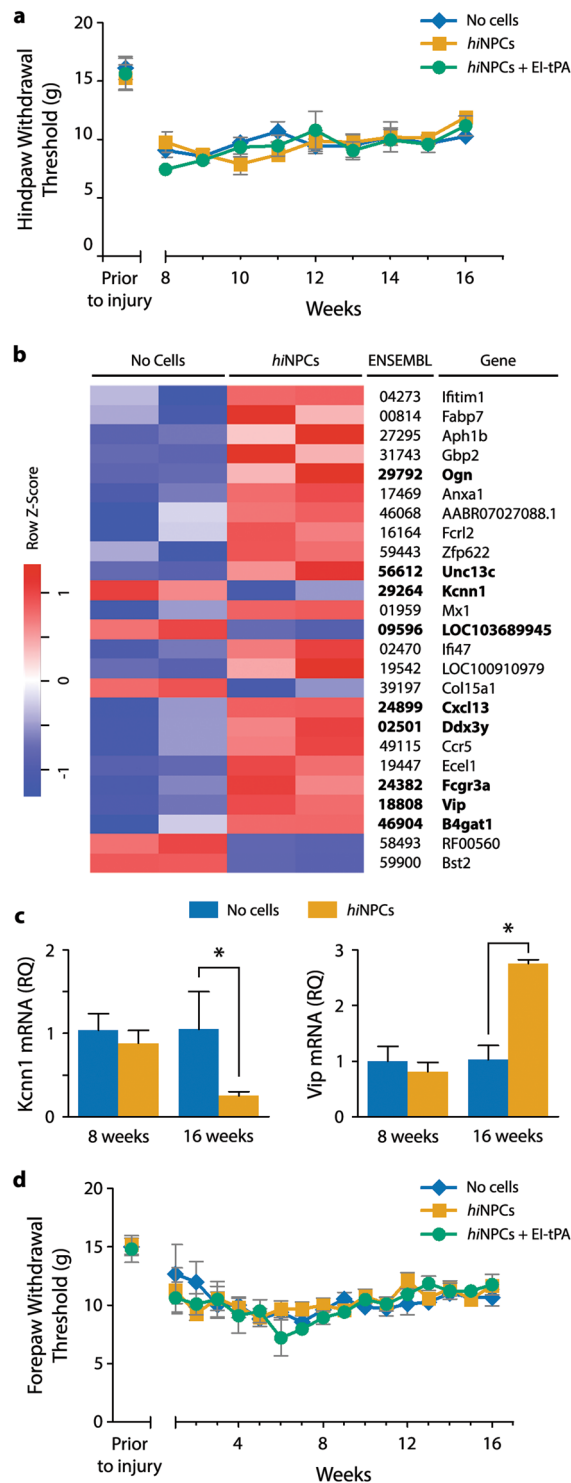


**Figure 4.** EI-tPA promotes penetration of *hiNPC* axons into the ventral spinal T7 segment *in vivo*. (a) GFP-expressing EI-tPA-treated *hiNPC* co-localized with axonal marker,  $\beta$ III tubulin (Tuji) emerging from the grafting site after 4 months. DAPI labels nuclei (blue). Images represent 3 individual rats per group. Scale bar is 50  $\mu$ m. (b) Representative higher magnification image of (a). Scale bar is 25  $\mu$ m. (c) Quantification of GFP immunoreactivity in the host ventral T7 segment in rats grafted with EI-tPA-treated *hiNPC* versus untreated *hiNPC* (\* $P < 0.05$  by Students *t*-test, mean  $\pm$  S.E.M;  $n = 3$  rats per group). Fluorescent images of graft derived GFP<sup>+</sup> cells integrating into T7 spinal segments; (d) *hiNPC* or (e) EI-tPA treated *hiNPC*. Scale bar is 30  $\mu$ m. Dual labeling immunofluorescence of  $\beta$ III tubulin and GFP in T7 ventral spinal segments; (f,h,j,l) *hiNPC* or (g,i,k,m) EI-tPA treated *hiNPC*. Scale bar 50  $\mu$ m.





**Figure 5.** Cell fate mapping of EI-tPA treated *hiNPC in vivo*. (a) Dual label immunofluorescence showed co-localization with hNu (white) and the neuron-specific marker, MAP2 (red), at the lesion site. Scale bar 25 μm. (b) Triple label immunofluorescence showed co-localization with ChAT (red), hNu (white) and GFP (green), revealing the presence of mature motor neurons at the lesion site by 8 weeks. Scale bar is 25 μm. (c) Triple label immunofluorescence showed co-localization of Mnx1 (red), hNu (white) and GFP (green), revealing the presence of mature motor neurons at the lesion site at 16 weeks. DAPI labels nuclei (blue). Scale bar is 25 μm. (d,e) Immunofluorescence showing GFP expressing *hiNPC* in the lesion site (low power) that is distinct from GFAP immunoreactive host astrocytes (red) at 8 weeks. Scale bar is 100 μm. (f) Higher power image distal to the lesion site. GFP expressing *hiNPC* were integrated into the host tissue and did not co-localize with GFAP (red) at 16 weeks. Scale bar 100 μm.



**Figure 6.** Effects of *hiNPC* on sensory function following T3SCI. **(a)** Hindpaw tactile allodynia was studied from 8 to 16 weeks post-T3SCI. (n.s., by two-way repeated measures ANOVA followed by Bonferroni *post-hoc* analysis mean  $\pm$  SEM;  $n = 4-6$  rats per group). **(b)** Heat map of differentially abundant transcripts by RNA-Seq in L5 DRGs after T3SCI, with and without grafted *hiNPC*. Increased expression is shown in red and reduced expression is shown in blue. RNA-Seq transcripts and experimental groups are arranged by unsupervised hierarchical clustering. Genes in bold are of potential interest for future pain related studies. **(c)** Changes in expression of KCNN1 and VIP in L5 DRGs at 8 and 16 weeks post-T3SCI ( $*P < 0.05$  by Students *t*-test, mean  $\pm$  SEM;  $n = 2-3$ ). **(d)** Forepaw tactile withdrawal thresholds from 8–16 weeks (n.s., two-way repeated measures ANOVA followed by Bonferroni *post-hoc* analysis, mean  $\pm$  SEM;  $n = 4-6$  rats per group).

Although previous studies demonstrated the ability of NSC to promote recovery after SCI<sup>3,39</sup>, the cells used in these studies were derived from embryonic tissues, which raise ethical issues when translation into human patients is considered. Although iPSC-derived NSC are previously reported to develop axons and form synapses when transplanted into SCI lesions, significant functional motor recovery was not observed<sup>13</sup>. We further confirmed this observation in our studies using *hiNPC* that were not treated with EI-tPA. Differences in tissue origin, induction methods, injury severity, the level of the SCI lesion, and grafting factors may contribute to variation in the results observed when iPSC technology is applied as a therapeutic strategy for SCI<sup>4,10,11,13</sup>. Notably, we utilized a well-described retroviral method to reprogram fibroblasts into *hiPSC*<sup>4-6,40,41</sup>. We previously used these methods in several studies and did not observe any aneuploidy or genomic errors due to the reprogramming method<sup>4-6,42,43</sup>. However, as we consider transplantation of stem cell grafts for SCI therapeutically, methods utilizing non-integrating reprogramming methods might be suitable for clinical translation<sup>44</sup>.

In addition to observing improved motor function in animals grafted with EI-tPA-treated *hiNPC*, we observed decreased muscle atrophy. ChAT and MNX1-positive neurons were present in lesions sites grafted with *hiNPC* which is consistent with functional motor improvements. It is possible that EI-tPA caused the *hiNPC* to differentiate into motor neurons at earlier time points. It is also possible that EI-tPA-treated *hiNPC* affected central pattern generators by activating key circuitry above the lesion site, which contributes to improved motor function<sup>45,46</sup>. Yet, the most striking result was the large number of axons penetrating into the T7 spinal ventral horn in the EI-tPA treated *hiNPC* group. Although there were GFP + structures in the T7 segment by the *hiNPC*s alone, they did not appear to be a neuronal phenotype, as they did not colocalize with an axonal marker,  $\beta$ III tubulin. Whether this is due to the limited number and size of axonal projections or whether they differentiate into a glia phenotype remains unknown. However, the improvements we observed in motor function by EI-tPA priming can at least be partially explained by a greater density of axons. Importantly, host axons appeared to be more abundantly expressed, suggesting the EI-tPA primed *hiNPC*s may improve host axon regeneration. Further studies are needed to confirm these hypotheses.

Notably, *hiNPC* did not worsen or improve “above” or “below” the lesion site pain-related behaviors. In previous studies that reported detrimental effects of stem cells on pain, the grafted NSC expressed astrocyte markers *in vivo*<sup>47</sup>. Our model system differs markedly in that we graft *hiNPC* directly into the lesion site, generating numerous mature neurons that extend many axons into the host spinal cord. There was also a possibility that “below-level” pain could now become consciously detectable pain after *hiNPC* treatment since *hiNPC* appeared to re-establish motor neural connectivity. However, we observed no detectable alterations in hindlimb sensation in rats grafted with *hiNPC* or *hiNPC* with EI-tPA, despite the improved motor recovery.

Although we did not see any differences in functional pain outcomes amongst *hiNPC* groups even when primed with EI-tPA in SCI rats, we performed RNA sequencing (RNA-Seq) studies in DRGs to determine whether changes in the molecular pain processing signature reflect *hiNPC* treatment after 16 weeks. We observed differential gene expression in 11 potential pain related processing genes that included VIP and KCNN1. Increased VIP mRNA has been associated with neuropathic pain<sup>48</sup> and KCNN1 down regulation has been implicated in pain hypersensitivity<sup>49</sup>. Importantly, these genes were unchanged in the DRGs after 8 weeks, but were significantly altered in rats grafted with *hiNPC* after 16 weeks. Changes in expression of these genes may justify future studies in which somatosensory testing is examined over longer periods of time following *hiNPC* grafting.

## Methods

**Neural progenitor cells (NPC) and human schwann cells (SC).** Human iPSC were obtained from skin fibroblasts from two healthy patients, WT126 (one clone, C5) and WT83 (two clones, C6,C9) as previously described<sup>5,40-43</sup>. The study protocol was approved by the University of California, San Diego (UCSD) and the Salk Institute Institutional Review Board (IRB)/Embryonic Stem Cell Oversight Committee (ESCRO) committees. Studies were carried out in accordance with these relevant guidelines and regulations. Briefly, subjects were recruited through the University of California, San Diego Autism Center of Excellence from a pool of volunteers formerly included in previous brain imaging studies. After a complete description of the study was provided, written informed consent was obtained from all adult subjects. Primary cultures of human SCs isolated from human spinal nerve were purchased from ScienCell Research Laboratories (#1700; Carlsbad, CA) and maintained in the manufacturer’s Schwann Cell Medium (#1701), as previously described<sup>50</sup>.

**RNA isolation and qPCR.** Cells or tissue were homogenized in lysis buffer and total RNA was extracted using the NucleoSpin<sup>®</sup> RNA kit (Macherey-Nagel). RNA was reverse-transcribed using the iScript cDNA synthesis kit (Bio-Rad). qPCR was performed using TaqMan<sup>®</sup> gene expression products and an AB Step one Plus Real-Time PCR System (Applied Biosystems), as previously described<sup>23</sup>. The mRNAs analyzed for *hiNPC*s and hSCs included: Nestin (Hs04187831\_g1), Sox2 (Hs04234836\_s1), CD24 (Hs02379687\_s1), LRP1 (Hs00233856\_m1), the turquoise module potassium channel related gene (KCNN1) (Rn00570904\_m1). The mRNAs analyzed for dorsal root ganglia (DRGs) included: and vasoactive intestinal polypeptide, VIP (Rn01430567\_m1). The relative change in mRNA expression was calculated using the  $2^{-\Delta\Delta Ct}$  method and EID2 (Hs00541978\_s1) and GAPDH (Rn01775763\_g1) mRNA as internal normalizers for human cells and rat tissues respectively. EID2 is a stable reference gene for human iPSCs<sup>51</sup>. Control qPCR reactions were performed using samples that were not exposed to reverse transcriptase to verify the absence of genomic DNA contamination.

**Cell signaling studies.** *hiNPC* were transferred to serum-free medium for up to 6 h and then treated with EI-tPA or vehicle. When indicated, *hiNPC* were pre-treated with MK801 (1  $\mu$ M; Tocris Bioscience) for 30 min. Immunoblot analysis was performed as described previously<sup>37,52</sup>.

**Cell death studies.** *hiNPC* were plated in 96 well plates and exposed to thrombin (5 units/mL) with and without EI-tPA (12 nM). Cell death was determined using Cell Death Detection ELISA<sup>PLUS</sup> according to the manufacturer's instructions (Roche).

**Animals.** Studies were performed using 38 adult female Foxn1<sup>tm</sup> rats (150–160 g; Charles River, Wilmington, MA). We chose female rats for these studies because their bladders are more readily emptied following severe SCI. Inclusion of female subjects in SCI and pain studies is well supported<sup>53</sup>. Pain prevalence rates and descriptions of pain do not differ between male and female patients with SCI<sup>54,55</sup>.

**Surgeries.** Animals were housed individually with free access to food and water in a vivarium approved by the American Association for the Accreditation of Laboratory Animal Care (AAALC). All animal studies were carried out according to protocols approved by the Institutional Animal Care and Use Committee (IACUC) at the University of California, San Diego, CA and the Veterans Healthcare System following the International Association for the Study of Pain (IASP) Guidelines for Use of Animals in Research. Rats underwent surgery under deep anesthesia using isoflurane (5% initially and then 3% for maintenance during surgery). An incision was made in the skin of the back over the T2 spinous process. After clearing of the muscle, the dorsal aspect of the T3 vertebra was removed. The cord was compressed for 5 seconds using mosquito forceps locked completely closed. Thin forceps were used to bilaterally compress the cord at two sites in the center of the T3 spinal segment located 1 mm apart, as we described previously<sup>27</sup>. The muscles overlying the spinal cord were sutured and the skin incision was closed with surgical suture. Following surgery, rats were maintained in cages kept on heat pads (37 °C) for 1 week and received banamine (1 mg/kg) and ampicillin (0.2 mg/kg) in Ringer's lactate for three days. Bladder care was performed twice daily at 12-hour intervals for the first two weeks following surgery, and thereafter once daily until rats could urinate on their own, approximately four weeks after surgery. Bladders were always expressed prior to acclimation for behavioral testing. Rats were given amoxicillin in their drinking water over the duration of the experiment to prevent bladder infections that could confound behavioral results.

**SCI and grafting surgeries.** Grafting human iPSC derived neural progenitor cells into rodent models of spinal cord injury was approved by the IACUC at UCSD. Rats were subjected to T3SCI as previously described<sup>27</sup>. We used T3SCI because this is the highest spinal level at which a severe spinal cord lesion allows subject survival; severe lesions located more rostral than T3 result in persistent forelimb dysfunction. This procedure is a modification of the clip-compression model<sup>56</sup>. Two rats died after surgery. The remaining 36 rats were randomly divided into cohorts that received no cells with growth factor cocktail (n = 13), *hiNPC* (n = 11) or EI-tPA-treated *hiNPC* (n = 12). *hiNPC* were reconstituted in human fibrinogen (25 mg/ml, Sigma, F3879), and a cocktail of four growth factors: brain-derived neurotrophic factor (BDNF; 50 µg/ml, Peprotech, 452-02), basic fibroblast growth factor (bFGF; 10 µg/ml, Sigma, F0291), vascular endothelial growth factor, (VEGF, 10 µg/mL Peprotech 100-20), and a calpain inhibitor (MDL28170; 50 µM Sigma M6690) with or without EI-tPA (12 nM; Molecular Innovations). Immediately prior to injection into lesion sites, cells, fibrinogen and growth factor cocktails were mixed with rat thrombin (5U/ml, Sigma, T5772). Two injections were made into the lesion cavity. 1.5 million *hiNPCs* were grafted. Injections were stopped if reflux occurred. Treatments were initiated one week after T3SCI because at that time, acute inflammation is reduced and initiation of gliosis is minimized<sup>57</sup>.

**RNASeq studies.** Total RNA isolated from DRGs of rats grafted with *hiNPC* or from control rats that did not receive *hiNPC* were analyzed. The RNA was subjected to RNASeq using Illumina High Seq. Quality control of the raw fastq files was performed using the software tool FastQC. Sequencing reads were aligned to the Ensembl rat genome (Rnor\_6.0) using the STAR v2.5.1a aligner<sup>58</sup>. Read quantification was performed with RSEM<sup>49</sup> v1.3.0 and Ensembl annotation (Rattus\_norvegicus.Rnor\_6.0.92.gtf). The R BioConductor packages edgeR<sup>59</sup> and limma<sup>60</sup> were used to implement the limma-voom<sup>61</sup> method for differential expression analysis. The experimental design was modeled upon condition (~0 + condition). Contrasts were made between *hiNPC* and “no cell” groups.

**Statistics.** Statistical analysis was performed using GraphPad Prism 5.0 (GraphPad Software Inc.). All results are expressed as mean ± SEM. Differences between two treatment means were assessed by a Student's t-test. Differences between multiple treatment means were analyzed by a one-way ANOVA followed by Neuman Keuls or Tukey's *post hoc* tests. Behavioral data including BBB and tactile allodynia assessments were analyzed by repeated measures ANOVA followed by Bonferroni's *post hoc* test.  $P < 0.05$  was considered statistically significant.

### Data availability

For additional methods on *hiNPC*, immunoblotting, trypan blue exclusions studies, motor and sensory functional testing, and immunofluorescence microscopy please see Supplemental Experimental Procedures. The data sets generated during and/or analyzed during the current study are available from the corresponding author on reasonable request.

Received: 11 June 2019; Accepted: 18 November 2019;

Published online: 17 December 2019

### References

1. Tetzlaff, W. *et al.* A systematic review of cellular transplantation therapies for spinal cord injury. *J. Neurotrauma* **28**, 1611–1682 (2011).
2. Sahni, V. & Kessler, J. A. Stem cell therapies for spinal cord injury. *Nat. Rev. Neurol.* **6**, 363–372 (2010).
3. Lu, P. *et al.* Prolonged human neural stem cell maturation supports recovery in injured rodents. *J. Clin. Invest.* **127**, 3287–3299 (2017).

4. Strnadel, J. *et al.* Survival of syngeneic and allogeneic iPSC-derived neural precursors after spinal grafting in minipigs. *Sci. Transl. Med.* **10**, 440, <https://doi.org/10.1126/scitranslmed.aam6651> (2018).
5. Chailangkarn, T. *et al.* A human neurodevelopmental model for Williams syndrome. *Nature* **536**, 338–43 (2016).
6. Marchetto, M. C. *et al.* Altered proliferation and networks in neural cells derived from idiopathic autistic individuals. *Mol. Psychiatry* **22**, 820–835 (2016).
7. Yuan, S. H. *et al.* Cell-surface marker signatures for the isolation of neural stem cells, glia and neurons derived from human pluripotent stem cells. *PLoS One* **6**, <https://doi.org/10.1371/journal.pone.0017540> (2011).
8. Russo, F. B. *et al.* Modeling the interplay between neurons and astrocytes in autism using human induced pluripotent stem cells. *Biol. Psychiatry* **83**, 569–578 (2018).
9. Haake, K., Ackermann, M. & Lachmann, N. Concise Review: Towards the clinical translation of induced pluripotent stem cell derived blood cell – ready for take-off. *Stem Cells Transl. Med.* <https://doi.org/10.1003/sctm.18-0134> (2018).
10. Nori, S. *et al.* Grafted human-induced pluripotent stem-cell-derived neurospheres promote motor functional recovery after spinal cord injury in mice. *Proc. Natl. Acad. Sci.* **108**, 16825–16830 (2011).
11. Ruzicka, J. *et al.* A comparative study of three different types of stem cells for treatment of rat spinal cord injury. *Cell Transplant.* **26**, 585–603 (2017).
12. Romanyuk, N. *et al.* Beneficial effect of human induced pluripotent stem cell derived neural precursors in spinal cord injury repair. *Cell Transplant.* **24**, 1781–1797 (2018).
13. Lu, P. *et al.* Long-distance axonal growth from human induced pluripotent stem cells after spinal cord injury. *Neuron* **83**, 789–96 (2014).
14. Lopez-Serrano, C. *et al.* Effects of the post-spinal cord injury microenvironment on the differentiation capacity of human neural stem cells derived from induced pluripotent stem cells. *Cell Transplant.* **25**, 1833–1852 (2016).
15. Albers, G. W. *et al.* Intravenous tissue-type plasminogen activator for treatment of acute stroke: the standard treatment with alteplase to reverse stroke (STARS) study. *JAMA* **283**, 1145–50 (2000).
16. Castellino, F. J. & Plopis, V. A. Structure and function of the plasminogen plasmin system. *Thromb. Haemst.* **93**, 647–54 (2005).
17. Nicole, O. *et al.* The proteolytic activity of tissue-plasminogen activator enhances NMDA receptor-mediated signaling. *Nat. Med.* **7**, 59–64 (2001).
18. Macrez, R., Bezin, L., Le Mauff, B., Ali, C. & Vivien, D. Functional occurrence of the interaction of tissue plasminogen activator with the NR1 Subunit of N-methyl-D-aspartate receptors during stroke. *Stroke* **41**, 2950–5 (2010).
19. Mantuano, E., Lam, M. S. & Gonias, S. L. LRP1 assembles unique co-receptor systems to initiate cell signaling in response to tissue-type plasminogen activator and myelin-associated glycoprotein. *J. Biol. Chem.* **288**, 34009–18 (2013).
20. Kim, Y. H., Park, J. H., Hong, S. H. & Koh, J. Y. Nonproteolytic neuroprotection by human recombinant tissue plasminogen activator. *Science* **284**, 647–50 (1999).
21. Shi, Y., Mantuano, E., Inoue, G., Campana, W. M. & Gonias, S. L. Ligand binding to LRP1 transactivates Trk receptors by a Src family kinase dependent pathway. *Sci. Signal* **28**, ra18, <https://doi.org/10.1126/scisignal.20000188> (2009).
22. Mantuano, E., Lam, M. S., Shibayama, M., Campana, W. M. & Gonias, S. L. The NMDA receptor functions as an LRP1 co-receptor to promote Schwann cell survival and migration. *J. Cell Science* **128**, 3476–88 (2015).
23. Mantuano, E. *et al.* Tissue type plasminogen activator regulates macrophage activation and innate immunity. *Blood* **130**, 1364–1374 (2017).
24. Yepes, M. Tissue type plasminogen activator is a neuroprotectant in the central nervous system. *Frontiers Cell Neuroscience* **9**, 304 (2015).
25. Minor, K. H. & Seeds, N. W. Plasminogen activator induction facilitates recovery of respiratory function following spinal cord injury. *Mol. Cell. Neurosci.* **37**, 143–52 (2008).
26. Seeds, N. W., Williams, B. L. & Bickford, P. C. Tissue plasminogen activator induction in purkinje neurons after cerebellar motor learning. *Science* **270**, 1992–4 (1995).
27. Lee-Kubli, C. A. *et al.* Analysis of the behavioral, cellular and molecular characteristics of pain in a severe rodent spinal cord injury. *Exp. Neurol.* **278**, 91–104 (2016).
28. Lenehan, B. *et al.* The epidemiology of traumatic spinal cord injury in British Columbia, Canada. *Spine* **37**, 321–329 (2012).
29. Calliperumal, J., Brodie, S., Ma, Y. & Colbourne, F. Thrombin causes neuronal atrophy and acute but not chronic death. *Can. J. Neurol. Sci.* **41**, 714–20 (2014).
30. Chen, B. *et al.* Thrombin activity associated with neuronal damage during acute focal ischemia. *J. Neurosci.* **32**, 7622–31 (2012).
31. Safa, A. R. Resistance to cell death and its modulation in cancer stem cells. *Crit. Rev. Oncog.* **21**, 203–219 (2016).
32. Karimi-Abdolrezaee, S., Eftekharpour, E., Wang, J., Morshead, C. M. & Fehlings, M. G. Delayed transplantation of adult neural precursor cells promotes remyelination and functional neurological recovery after spinal cord injury. *J. Neurosci.* **26**, 3377–3389 (2006).
33. Basso, D. M., Beattie, M. S. & Bresnahan, J. C. A sensitive and reliable locomotor rating scale for open field testing in rats. *J. Neurotrauma* **12**, 1–21 (1995).
34. Lin, C. Y. *et al.* Differential adaptations of the musculoskeletal system after spinal cord contusion and transection in rats. *J. Neurotrauma* **35**, 1737–1744 (2018).
35. Zhang, Y. *et al.* Nuclear nestin deficiency drives tumor senescence via lamin A/C dependent nuclear deformation. *Nat. Commun.* **9**, 3613, <https://doi.org/10.1038/s41467-018-05808> (2018).
36. Pfaff, S. L., Mendelsohn, M., Stewart, C. & Edlund, T. M. Requirement for LIM homeobox G gene ISL1 in motor neuron generation reveals a motor neuron-dependent step in interneuron differentiation. *Cell* **84**, 309–320 (1996).
37. Campana, W. M. *et al.* The low-density lipoprotein receptor related protein (LRP-1) is a pro-survival receptor in Schwann cells: Possible implications in development and peripheral nerve injury. *J. Neurosci.* **26**, 11197–11207 (2006).
38. Lemarchand, E. *et al.* Stressed neurons protect themselves by a tissue type plasminogen activator-mediated EGFR dependent mechanism. *Cell Death Differ.* **23**, 123–131 (2016).
39. Koffler, J. *et al.* Biomimetic 3D-printed scaffolds for spinal cord injury repair. *Nat. Med.* <https://doi.org/10.1038/s41591-018-0296-z> (2019).
40. Griesi-Oliveira, K. *et al.* Modeling non-syndromic autism and the impact of TRPC6 disruption in human neurons. *Molecular Psychiatry* **20**, 1350–1365, <https://doi.org/10.1038/mp.2014.141> (2015).
41. Marchetto, M. C. *et al.* A model for neural development and treatment of Rett Syndrome using human induced pluripotent stem cells. *Mol. Psychiatry*, <https://doi.org/10.1016/j.cell.2010.10.016> (2010).
42. Trujillo, C. A. *et al.* Complex oscillatory waves emerging from cortical organoids model early human brain network development. *Cell Stem Cell*, <https://doi.org/10.1016/j.stem.2019.08.002> (2019).
43. Negraes, P. D. *et al.* Modeling anorexia nervosa: transcriptional insights from human iPSC-derived neurons. *Transl Psychiatry* **7**, e1060 (2017).
44. Schlaeger, T. M. *et al.* A comparison of non-integrating reprogramming methods. *Nat. Biotechnol.* **33**, 58–63 (2015).
45. Barriere, G., Leblond, H., Provencer, J. & Rossignol, S. Prominent role of the spinal central pattern generator in the recovery of locomotion after partial spinal cord injuries. *J. Neurosci.* **28**, 3976–87 (2008).
46. Frigon, A. Central pattern generators of the mammalian spinal cord. *The Neuroscientist* **18**, 56–69 (2012).

47. Macias, M. Y. *et al.* Pain with no gain: allodynia following neural stem cell transplantation in spinal cord injury. *Exp. Neurol.* **201**, 335–48 (2006).
48. Dickinson, T. & Fleetwood-Walker, S. M. VIP and PACAP: very important in pain. *Trends in Pharm. Sci.* **20**, 324–329 (1999).
49. Wulff, H. & Zhorov, B. S. K<sup>+</sup> channel modulators for the treatment of neurological disorders and autoimmune diseases. *Chem Rev* **108**, 1744–1773 (2008).
50. Flutsch, A. *et al.* Evidence that LDL receptor-related protein 1 acts as an early injury detection receptor and activates c-Jun in Schwann cells. *Neuroreport* **27**, 1305–1311 (2016).
51. Holmgren, G. *et al.* Identification of stable reference genes in differentiating human pluripotent stem cells. *Physiol. Genomics* **47**, 232–239 (2015).
52. Inoue, G. *et al.* Erythropoietin promotes Schwann cell migration and assembly of the provisional extracellular matrix by recruiting  $\beta$ 1 integrin to the cell surface. *Glia* **58**, 399–409 (2010).
53. Mogil, J. S. & Chanda, M. L. The case for the inclusion of female subjects in basic science studies of pain. *Pain* **117**, 1–5 (2005).
54. Dijkers, M., Bryce, T. & Zanca, J. Prevalence of chronic pain after traumatic spinal cord injury: a systematic review. *J. Rehabil. Res. Dev.* **46**, 13–29 (2009).
55. Werhagen, L., Budh, C. N., Hultling, C. & Molander, C. Neuropathic pain after traumatic spinal cord injury—relations to gender, spinal level, completeness, and age at the time of injury. *Spinal Cord* **42**, 665–673 (2004).
56. Poon, P. C., Gupta, D., Shoichet, M. S. & Tator, C. H. Clip compression model is useful for thoracic spinal cord injuries: histologic and functional correlates. *Spine* **32**, 2853–2859 (2007).
57. Fitch, M. T. & Silver, J. CNS injury, glial scars, and inflammation: inhibitory extracellular matrices and regeneration failure. *Exp. Neurol.* **209**, 294–301 (2008).
58. Dobin, A. *et al.* STAR: ultrafast universal RNA-seq aligner. *Bioinformatics* **1**, 15–21 (2013).
59. Li, B. & Dewey, C. N. RSEM: accurate transcript quantification from RNA-Seq data with or without a reference genome. *BMC Bioinformatics* **12**, 323 (2011).
60. Robinson, M. D., McCarthy, D. J. & Smith, G. K. EdgeR: A bioconductor package for differential expression analysis of digital gene expression data. *Bioinformatics* **26**, 139–40 (2010).
61. Ritchie, M. E. *et al.* Limma powers differential expression analyses for RNA Sequencing and microarray studies. *Nucleic Acids Res.* **43**, e47 (2015).

## Acknowledgements

We thank Pardis Azmoon for assistance with preparing of figures. We are grateful to Drs. Kate Fisch and Elisabetta Mantuano for helpful discussions. We also want to thank Alicia Van-Enoo and Dr. Nao Hirotsawa for technical support. This work was supported by SC140273/W81XWH-15-1-0498 from the Department of Defense and R01 NS097590, R01 HL136395, and UL1TR001442 of CTSA from the NIH. P.M. was supported by the International Rett Syndrome Foundation (IRSF). A.R.M. was supported by R01MH108528, R01MH094753, R01MH109885, R01MH100175 and U19MH107367, and the National Cooperative Reprogrammed Cell Research Groups (NCRCRG) to Study Mental Illness.

## Author contributions

Y.S., A.M., S.L.G. and W.M.C. conceived of and designed the overall study. Y.S. performed most of the experiments. A.S., C.B. and H.J.K. performed qPCR studies. P.M. and J.J.J. prepared all human NPCs. H.J.K. performed cell signaling studies. Y.S., J.H.K. and H.J.K. performed IF imaging studies. C.N. and W.M.C. analyzed transcriptome data. Y.S., S.O., A.M., S.L.G. and W.M.C. analyzed data and wrote the initial manuscript. P.M., S.L.G. and W.M.C. revised the manuscript. All authors read, edited and approved the final version of the manuscript.

## Competing interests

Alysson R. Muotri, PhD, is a co-founder and has equity interest in TISMOO, a company dedicated to genetic analysis focusing on therapeutic applications customized for autism spectrum disorder and other neurological disorders with genetic origins. The terms of this arrangement have been reviewed and approved by the University of California San Diego in accordance with its conflict of interest policies. All other authors declare no potential conflict of interest.

## Additional information

**Supplementary information** is available for this paper at <https://doi.org/10.1038/s41598-019-55132-8>.

**Correspondence** and requests for materials should be addressed to W.M.C.

**Reprints and permissions information** is available at [www.nature.com/reprints](http://www.nature.com/reprints).

**Publisher's note** Springer Nature remains neutral with regard to jurisdictional claims in published maps and institutional affiliations.



**Open Access** This article is licensed under a Creative Commons Attribution 4.0 International License, which permits use, sharing, adaptation, distribution and reproduction in any medium or format, as long as you give appropriate credit to the original author(s) and the source, provide a link to the Creative Commons license, and indicate if changes were made. The images or other third party material in this article are included in the article's Creative Commons license, unless indicated otherwise in a credit line to the material. If material is not included in the article's Creative Commons license and your intended use is not permitted by statutory regulation or exceeds the permitted use, you will need to obtain permission directly from the copyright holder. To view a copy of this license, visit <http://creativecommons.org/licenses/by/4.0/>.

© The Author(s) 2019