

UC San Diego

UC San Diego Previously Published Works

Title

A novel acidification mechanism for greatly enhanced oxygen supply to the fish retina

Permalink

<https://escholarship.org/uc/item/2h58c35h>

Authors

Damsgaard, Christian

Lauridsen, Henrik

Harter, Till S

et al.

Publication Date

2020

DOI

10.7554/elife.58995

Copyright Information

This work is made available under the terms of a Creative Commons Attribution License, available at <https://creativecommons.org/licenses/by/4.0/>

Peer reviewed

A novel acidification mechanism for greatly enhanced oxygen supply to the fish retina

Christian Damsgaard^{1†*}, Henrik Lauridsen², Till S Harter³, Garfield T Kwan³, Jesper S Thomsen⁴, Anette MD Funder⁵, Claudiu T Supuran⁶, Martin Tresguerres³, Philip GD Matthews¹, Colin J Brauner¹

¹Department of Zoology, University of British Columbia, Vancouver, Canada;

²Department of Clinical Medicine, Aarhus University, Aarhus, Denmark; ³Scripps Institution of Oceanography, UC San Diego, La Jolla, United States; ⁴Department of Biomedicine, Aarhus University, Aarhus, Denmark; ⁵Department of Forensic Medicine, Aarhus University, Aarhus, Denmark; ⁶Università degli Studi di Firenze, Neurofarba Department, Sezione di Scienze Farmaceutiche, Florence, Italy

Abstract Previously, we showed that the evolution of high acuity vision in fishes was directly associated with their unique pH-sensitive hemoglobins that allow O₂ to be delivered to the retina at PO₂s more than ten-fold that of arterial blood (Damsgaard et al., 2019). Here, we show strong evidence that vacuolar-type H⁺-ATPase and plasma-accessible carbonic anhydrase in the vascular structure supplying the retina act together to acidify the red blood cell leading to O₂ secretion. In vivo data indicate that this pathway primarily affects the oxygenation of the inner retina involved in signal processing and transduction, and that the evolution of this pathway was tightly associated with the morphological expansion of the inner retina. We conclude that this mechanism for retinal oxygenation played a vital role in the adaptive evolution of vision in teleost fishes.

*For correspondence: cdams@zoology.ubc.ca

Present address: [†]Aarhus Institute of Advanced Studies & Section for Zoophysiology, Department of Biology, Aarhus University, Aarhus, Denmark

Competing interests: The authors declare that no competing interests exist.

Funding: See page 16

Received: 21 May 2020

Accepted: 29 July 2020

Published: 25 August 2020

Reviewing editor: Mikko Nikinmaa, Finland

© Copyright Damsgaard et al. This article is distributed under the terms of the [Creative Commons Attribution License](https://creativecommons.org/licenses/by/4.0/), which permits unrestricted use and redistribution provided that the original author and source are credited.

Introduction

The retina of vertebrates, containing the light-sensitive photoreceptors required for visual perception, has a very high metabolic rate that must be supported by an adequate supply of O₂ (Linsenmeier and Braun, 1992). To support such a high O₂ demand, most tissues possess a dense network of capillaries that minimize diffusion distances, facilitating the transfer of O₂ from the red blood cells (RBCs) to the respiring mitochondria. However, pigmented RBCs in capillaries on the vitreous side of the retina scatter incoming light and absorb photons before they reach the photoreceptors (Buttery et al., 1991; Chase, 1982; Country, 2017; Damsgaard et al., 2019; Yu and Cringle, 2001). The result may be an impairment of visual acuity, which may explain why only the choroidal vessels lining the back of the retina (also called the choriocapillaris) perfuse the retinae of most vertebrates (Country, 2017) (see **Figure 1** for retinal anatomy). The combination of a high O₂ demand and limited O₂ diffusion associated with this anatomical arrangement introduces a tradeoff between retinal O₂ supply and visual performance common to all vertebrates (Damsgaard et al., 2019). Thus, any evolutionary increase in retinal thickness to support longer photoreceptors for improved light sensitivity, more ganglion cells for improved visual acuity, and more synaptic connections for improved visual processing would limit O₂ flux due to the larger diffusion distance, necessitating compensatory mechanisms that ensure O₂ delivery by either decreasing diffusion distance or increasing the O₂ partial pressure (PO₂) gradient; the driving force for O₂ diffusion (Bellhorn, 1997; Buttery et al., 1991; Chase, 1982; Country, 2017; Damsgaard et al., 2019; Yu et al., 2009). Some vertebrates that evolved a thick retina, did so by lining the retina's inner (i.e. light facing) side with a

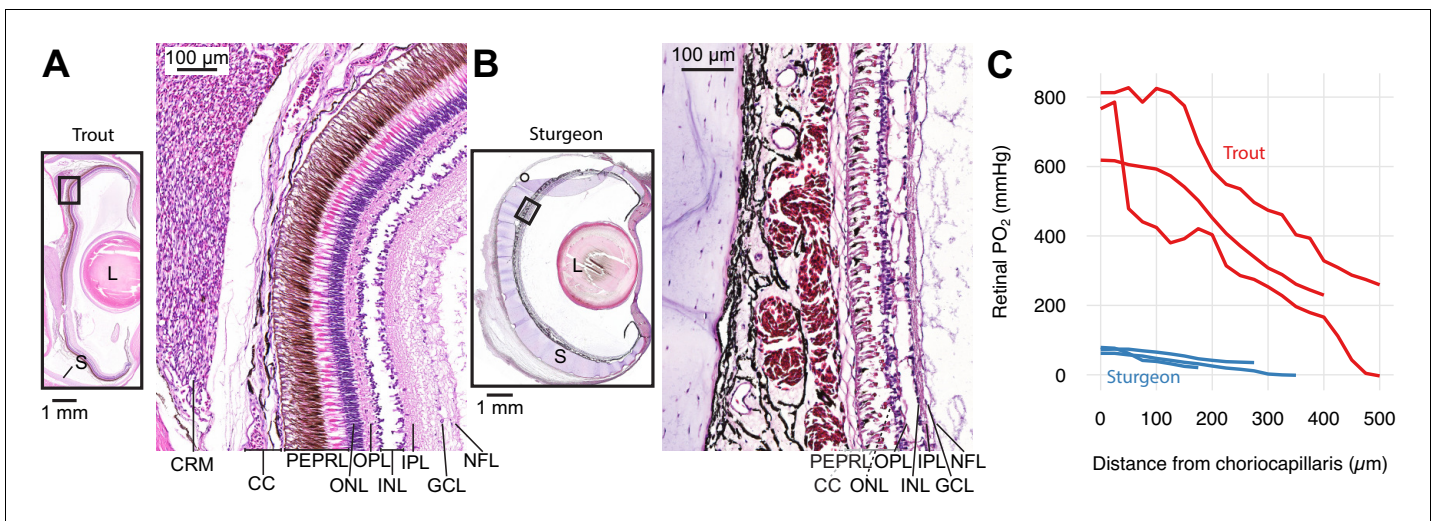


Figure 1. Retinal micro-anatomy and oxygen distribution in the retina of rainbow trout (*Oncorhynchus mykiss*) (A) and white sturgeon (*Acipenser transmontanus*) (B). Histology indicates a thick retina and presence of a choroid rete mirabile in the rainbow trout and a thin retina and absence of a choroid rete mirabile in the white sturgeon. PEPRL constitutes the outer retina, and ONL to NFL constitute the inner retina. Partial pressure of O₂ (PO₂) distribution in the retina of rainbow trout (red) and white sturgeon (blue) (C) showing that rainbow trout has a higher PO₂ (linear mixed-effects model, $n = 6$ [3 for each species], $\beta \pm SE = 390 \pm 75.8$ mmHg, $t = 5.14$, $p < 0.001$) and a steeper PO₂ gradient (linear mixed-effects model, $n = 6$ [3 for each species], $\beta \pm SE = -1.06 \pm 0.0859$ mmHg μm^{-1} , $t = -12.4$, $p < 0.001$) when compared to white sturgeon. Abbreviations: CC, choriocapillaris; CRM, choroid rete mirabile; GCL, ganglion cell layer; INL, inner nuclear layer; IPL, inner plexiform layer; L, lens; NFL, nerve fiber layer; ONL, outer nuclear layer; OPL, outer plexiform layer; PEPRL, pigment epithelium and photoreceptor layer; S, sclera.

The online version of this article includes the following figure supplement(s) for figure 1:

Figure supplement 1. Vascular macro-anatomy of the eye of rainbow trout (*Oncorhynchus mykiss*).

high capillary density to halve the O₂ diffusion distance and thus promote O₂ delivery, while some mammals and a few teleosts have capillaries inside the retina (Damsgaard et al., 2019). In stark contrast, some teleost fishes evolved a unique solution to ensure sufficient O₂ delivery to their thick retina despite a complete lack of internal capillaries by using an exceptional system for O₂ supply, which delivers O₂ at a PO₂ far above that of the arterial blood (henceforth: O₂ secretion). A similar O₂ secretion mechanism was initially described in the teleost swim bladder, where blood acidification in the capillaries drives O₂ from hemoglobin (Hb) into the swim bladder lumen in order to regulate buoyancy against high hydrostatic pressures at depth (Berenbrink et al., 2005; Steen, 1963a). Later, O₂ secretion was also described in the teleost retina, where blood PO₂ can increase from around 85 mmHg in the central arteries to beyond 1300 mmHg in the retina of some fish species (Randall and Cameron, 1973; Wittenberg and Wittenberg, 1962). Oxygenated blood is supplied to the retina from the pseudobranch that drains into a counter-current rete (Barnett, 1951; Copeland, 1980; Müller, 1841; Walls, 1942), the choroid rete mirabile, which allows the high PO₂ to be magnified and localized behind the retina by permitting diffusion of O₂ from the venous to the arterial side of the rete. The evolutionary innovation of the choroid rete provided a high O₂ flux to the thick fish retina without obstructing the optical path. It likely enabled an increase in visual performance that may have facilitated niche expansions and novel feeding types and may have contributed to the explosive adaptive radiation of the teleosts, that today, represent half of all vertebrates (Berenbrink et al., 2005; Randall et al., 2014).

The hallmark of retinal O₂ secretion is the Root effect of teleost Hbs, where H⁺-binding to Hb reduces not only its O₂ affinity but also its O₂ carrying capacity (Pelster and Weber, 1991; Root, 1931; Waser and Heisler, 2005; Weber and Fago, 2004). Thus, reductions in RBC pH lead to a significant right-shift of the O₂ equilibrium curve and, consequently, a pronounced increase in blood PO₂. However, the specific mechanisms responsible for acidifying the blood reaching the eye has remained largely elusive. While the pseudobranch slightly acidifies the blood before it reaches the eye, this acidification is not sufficient to activate the Root effect (Bridges et al., 1998; Kern et al., 2002; Waser and Heisler, 2005; Waser and Heisler, 2004), as otherwise, this would

lead to a maladaptive loss of O_2 to the surrounding water. Thus, an additional source of H^+ -secretion of the blood draining the pseudobranch is required to activate the Root effect and induce retinal O_2 secretion. We propose that a key candidate for excreting H^+ s from the endothelial cells into the lumen is the vacuolar-type H^+ -ATPase (VHA). This multi-subunit enzyme uses the energy from ATP hydrolysis to transport H^+ across biological membranes (Tresguerres, 2016). VHA is expressed in cells within the pseudobranch and the swimbladder gas-gland (Boesch et al., 2003; Kern et al., 2002). However, H^+ s do not rapidly cross the red blood cell membrane and must be combined with HCO_3^- to form CO_2 (HCO_3^- dehydration) that readily diffuses across the RBC membrane (Brauner et al., 2019). This dehydration reaction is slow relative to rates of blood capillary transit, so we also propose that a catalytic plasma-accessible carbonic anhydrase (paCA) is required to take advantage of VHA H^+ -excretion for RBC acidification. Once CO_2 is within the RBC, it must rapidly be converted into H^+ by a RBC CA to activate the Root effect, as the vast majority of teleost Hbs are insensitive to direct CO_2 -binding and respond solely to changes in RBC pH (Damsgaard et al., 2014; Weber and Fago, 2004). Thus, the first aim of this study was to determine whether the choroid rete mirabile is a H^+ -secreting gland that can enhance retinal O_2 secretion in teleosts, and more specifically, whether this process relies on the combined action of paCA and VHA in the rete blood vessels.

Retinal O_2 secretion appears highly beneficial, as it magnifies the O_2 diffusion gradient and permitted the evolution of a thicker retina (Damsgaard et al., 2019). However, nothing is known about how this superior mode of O_2 delivery affected the function and evolution of the different retinal segments, which can shed insight into the co-evolutionary interactions between retinal O_2 delivery and specific visual modalities. The photoreceptor layer (PEPRL in Figure 1AB) constituting the outer retina lie directly adjacent to the choroid and are readily supplied with O_2 (Country, 2017; Walls, 1942) (see Figure 1AB for an overview of the retinal anatomy). In contrast, the components of the inner retina are positioned more distantly to the choroid (Country, 2017; Walls, 1942), and hence, changes in choroidal O_2 delivery would be expected to have profound effects on inner retinal function. Because this region includes the synaptic layers for lateral inhibition, the ganglion cells for signal integration, and the nerve fiber layer for signal transduction (ONL to NFL in Figure 1AB), visual performance could be greatly impaired by limited O_2 delivery. Thus, the secondary aim of this study was to assess the functional sensitivity of the inner and outer retina to changes in choroidal O_2 supply, by inhibiting the different components of the hypothesized oxygen secretion pathway. Moreover, to further compare those findings with the morphological evolution of the inner and outer retina during evolutionary gains and losses of retinal O_2 secretion based on existing literature data.

We designed this study to test three hypotheses: i) that the choroid rete mirabile acidifies the blood using VHA and paCA, which act together to permit O_2 secretion and thus greatly augment O_2 supply to the retina. ii) that the functional significance of O_2 secretion is greatest to the inner retina, which is therefore more sensitive to changes in choroidal PO_2 compared to the outer retina. iii) consequently, the evolutionary gains and losses of the choroid rete mirabile were associated with corresponding changes in the morphology of the inner, but not the outer, retina. To test these hypotheses, we first used immunohistochemical staining of choroid rete mirabile of rainbow trout to identify the presence and localization of VHA and paCA. Next, we measured retinal function and choroidal PO_2 simultaneously in an in vivo rainbow trout model during sequential inhibition of extra- and intracellular CAs, revealing both the mechanisms for retinal O_2 secretion in the choroid rete mirabile and the effects of choroidal PO_2 on retinal function. Finally, we compared these functional findings to literature data on retinal morphology from multiple species to investigate whether the most PO_2 -sensitive parts of the retina display the most extensive morphological changes during evolutionary gains and losses of the choroid rete mirabile.

Results

Retinal oxygen distribution in species with and without a choroid rete mirabile

First, we confirmed the previous descriptions of a choroid rete mirabile and high PO_2 in the eye of rainbow trout (*Oncorhynchus mykiss*, Walbaum, 1792) and to compare the retinal PO_2 values to

those of white sturgeon (*Acipenser transmontanus*, Richardson, 1836) that is not expected to possess a choroid rete mirabile based on the absence of this structure in other members of the genus (Berenbrink et al., 2005; Damsgaard et al., 2019). Histological sectioning of both species' eyes confirmed the presence of a choroid rete mirabile in rainbow trout and its absence in white sturgeon (Figure 1AB). Micro-CT of a rainbow trout head filled with a radiopaque contrast agent further revealed the three-dimensional anatomy of vascular structures involved in O₂ secretion (Figure 1—figure supplement 1; Supplementary file 1). Maximal transverse thickness of the retina was 135 and 425 μm in sturgeon and trout, respectively. We measured transretinal PO₂ profiles in three individuals of the two species using an ultrathin PO₂-sensitive electrode. As predicted, we found a much higher PO₂ in the retina of rainbow trout compared to that of white sturgeon (linear mixed-effect model, n = 6 [3 for each species], β ± SE = 390 ± 75.8 mmHg, t = 5.14, p < 0.001) with a PO₂ of 732 ± 58.6 and 71.22 ± 4.94 mmHg in the choroid of rainbow trout and white sturgeon, respectively. Further, these data showed a 6.2-fold steeper slope of the PO₂ profile in the trout retina compared to the sturgeon retina (linear mixed-effect model, n = 6 [3 for each species], β ± SE = -1.06 ± 0.0859 mmHg μm⁻¹, t = -12.4, p < 0.001).

Immunolocalization of vacuolar-type proton ATPase and carbonic anhydrase four in the choroid rete mirabile

To illuminate the pathways for retinal oxygen secretion, we tested for the presence, localization, and activities of VHA and paCA within the choroid rete mirabile of rainbow trout. Western blotting showed the presence of VHA and CA4 proteins in tissue homogenates of the choroid rete mirabile (Figure 2—figure supplement 1). To localize these proteins within the choroid rete mirabile, we used immunohistochemistry and confocal super-resolution microscopy on tissue sections, showing that CA4 and VHA were both present in endothelial cells of the choroid rete mirabile vasculature (Figures 2 and 3). To determine the subcellular location of these enzymes, we used the nucleus of the endothelial cell as an intracellular reference. Super-resolution images showed that both CA4 and VHA were present on the luminal side of the cell nucleus, likely in association with the plasma membrane of these endothelial cells (Figures 2D and 3D). This finding is consistent with a plasma-accessible orientation of VHA and CA4, and these enzymes seem to line the entire vasculature of the choroid rete mirabile in rainbow trout. Lastly, we showed a robust enzymatic activity of VHA in choroid rete mirabile homogenates of 2.20 ± 0.252 μmol ADP h⁻¹ mg protein⁻¹. Together, these results confirm the presence, cellular orientation, and functional activity of VHA and CA4 in the choroid rete mirabile of rainbow trout.

Pharmacological inhibition of oxygen secretion

Having identified the presence of VHA and CA4 in the luminal side of the choroid rete mirabile, we tested their functional role in facilitating retinal O₂ secretion in vivo. Therefore, we instrumented anesthetized rainbow trout with electrodes in the retina for measuring an electroretinogram and an ultra-thin PO₂-electrode in the choroid of the counter lateral eye to measure choroidal PO₂. A dorsal aortic catheter was used to deliver arterial injections of saline (control), C18 (a functionally membrane-impermeable CA inhibitor within the duration of the experiment), and acetazolamide (a much more membrane-permeable CA inhibitor that affects both extracellular and intracellular CA) (see Figure 4—figure supplement 1 for experimental setup and timeline) (Rummer et al., 2013; Scozzafava et al., 2000; Supuran, 2008). Under control conditions, choroidal PO₂ was 517 ± 95.3 mmHg (mean ± standard error of mean, n = 6), which is significantly higher than the typical PO₂ values of 85 mmHg in the dorsal aortic blood of rainbow trout (Randall and Cameron, 1973). The control injection of saline did not affect choroidal PO₂ (linear mixed-effect model followed by Tukey posthoc analysis, n = 6, β ± SE = -32.2 ± 84.7 mmHg, z = -0.380, Holm-adjusted p = 0.70, Figure 4). The subsequent injection of C18 decreased choroidal PO₂, to 226 ± 99.5 mmHg (n = 6, β ± SE = -259 ± 84.7 mmHg, z = -3.05, Holm-adjusted p = 0.0068, Figure 4), verifying a role of paCA in facilitating Hb-O₂ unloading to the retina. The addition of acetazolamide further decreased choroidal PO₂, to 18.3 ± 13.2 mmHg (n = 6, β ± SE = -207 ± 84.7 mmHg, z = -2.45, Holm-adjusted p = 0.0283, Figure 4), indicating an additional involvement of intracellular CAs in acidifying the red blood cell to enhance O₂ secretion to the retina. These results in combination with the

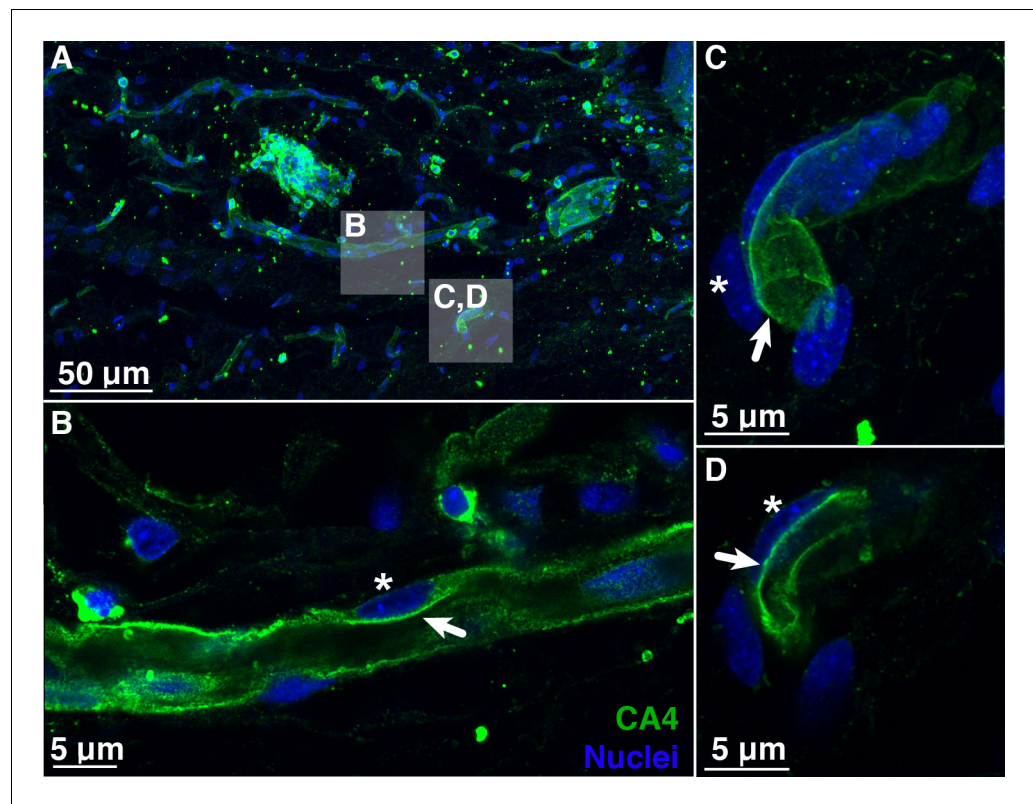


Figure 2. Blood vessels in the choroid rete mirabile of the rainbow trout eye, stained for the membrane-bound, carbonic anhydrase isoform 4 (CA4; green) and nuclei (blue). (A) Overview of a choroid rete mirabile section with inserts denoting the magnified vessels shown in panels B and C. (B) Magnified blood vessel shows CA4 staining along the entire length of the vessel. The staining pattern of a single endothelial cell is consistent with an apical localization of CA4 protein (arrow), whereas the nuclei of endothelial cells (see asterisk) are located basolaterally of the CA4 staining. (C) Another magnified blood vessel shows CA4 staining (arrow) surrounding the entire vessel lumen with the cell nuclei (asterisk) found on the outside. To further illustrate the luminal orientation of CA4, panel (D) represents a cross-section of the vessel shown in C, clearly showing that CA4 staining is not found within the vessel itself, but only surrounding the lumen. Detection of CA4 was with a polyclonal antibody raised against rainbow trout CA4 that has been described previously (Georgalis et al., 2006; Gilmour et al., 2007), and nuclei were visualized with DAPI.

The online version of this article includes the following figure supplement(s) for figure 2:

Figure supplement 1. Western blot analysis of choroid rete mirabile tissue homogenates.

immunohistochemical and biochemical data strongly support the hypothesis that VHA and paCA act together to facilitate O_2 secretion in the teleost retina.

The role of oxygen secretion for retinal function

During the progressive inhibition of retinal O_2 secretion measured in the right eye, we quantified the functional implications for vision in the left eye by recording electroretinograms in response to pulses of 525 nm light (Figure 4—figure supplement 1). Each light stimulus event consisted of six 0.1 ms light pulses separated by 1 s intervals, with stimulations repeated every fifth minute. Under control conditions, rainbow trout exhibited the normal features of a vertebrate electroretinogram with distinct a- and b-waves (Figure 5A), representing the hyperpolarization of the photoreceptors and the depolarization of the ON-center bipolar cells within the inner retina, respectively. The amplitudes of the a- and b-waves of the electroretinogram (V_a and V_b , respectively) displayed absolute reductions with reduced choroidal PO_2 (linear mixed-effect model using \log_{10} -transformed PO_2 , $n = 4$, $\beta \pm SE = 0.383 \pm 0.0565$, $t = 6.79$, $p < 0.001$), but with a 2.1-fold greater effect on the b-wave

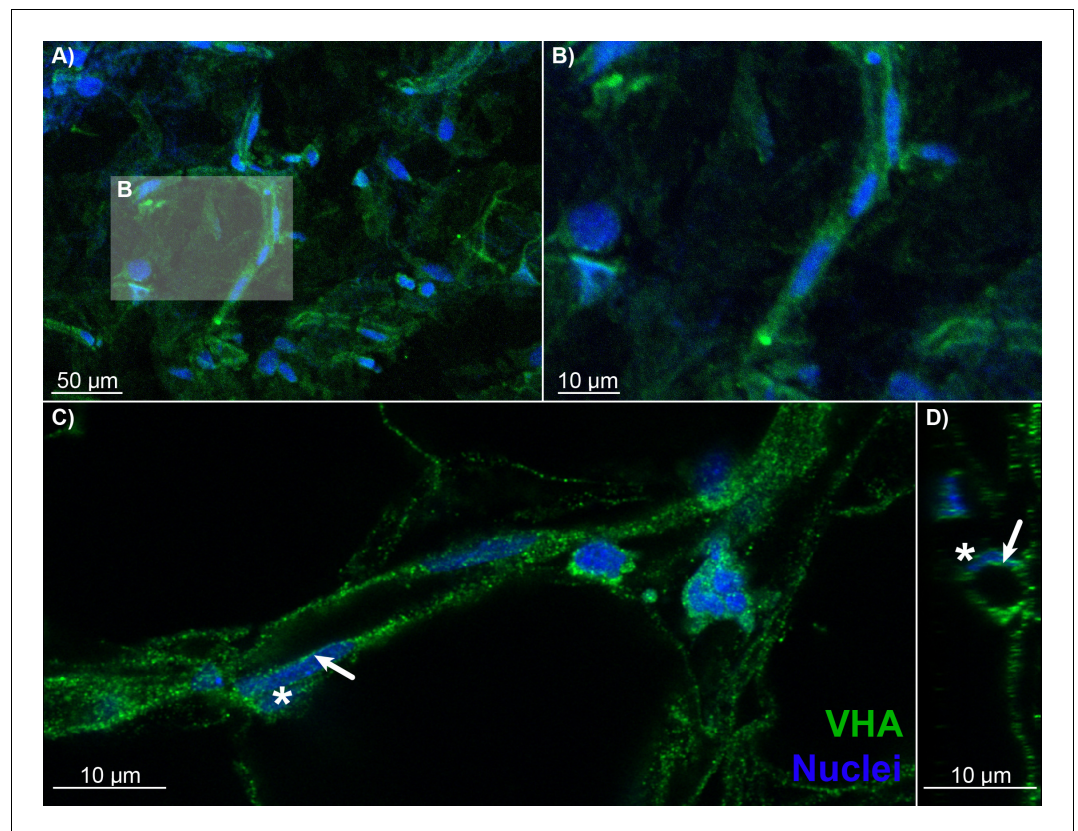


Figure 3. Blood vessels in the choroid rete mirabile of the rainbow trout eye, stained for the vacuolar-type proton ATPase (VHA; green) and nuclei (blue). (A) Overview of a choroid rete mirabile section with an insert denoting the magnified vessel section in (B) that shows a single blood vessel with VHA staining. (C) Another blood vessel shows the staining pattern for VHA along the entire length of the vessel walls. In a single endothelial cell, the staining pattern for VHA indicates an apical localization of the protein, whereas the nuclei of endothelial cells (asterisk) are located basolaterally of the VHA staining. To further illustrate the luminal orientation of VHA, panel (D) represents a cross-section of the vessel shown in C, further illustrating that VHA staining is not found within the vessel itself, but only surrounding the blood lumen. Detection of VHA was with a polyclonal antibody raised against the conserved β -subunit of VHA, and nuclei were visualized with DAPI.

compared to the a-wave ($p < 0.001$). This finding supports the second hypothesis that the inner retina is more sensitive to changes in choroidal PO_2 compared to the outer retina.

Further, the data provided information about the temporal responsiveness of the inner and outer retina measured as the implicit time (IT) of the a- and b-waves, IT_a and IT_b , respectively, quantified as the time from the light stimulus to the peak of the respective waves (Figure 5A). The data showed that IT_a was impaired by reductions in choroidal PO_2 (linear mixed-effect model using \log_{10} -transformed PO_2 in mmHg, $n = 4$, $\beta \pm SE = -53.2 \pm 7.93$, $t = -6.70$, $p < 0.001$). IT_b was similarly affected by reductions in choroidal PO_2 (linear mixed-effect model using \log_{10} -transformed PO_2 , $n = 4$, $\beta \pm SE = -52.8 \pm 11.8$, $t = -4.47$, $p < 0.001$).

The role of the oxygen secretion mechanism on the evolutionary dynamics of the inner and outer retina morphology

Using published data (Damsgaard et al., 2019), we compared the morphology of the inner and outer retina in species with and without a choroid rete mirabile (Figure 6). This analysis showed significantly thicker inner retina in species with a choroid rete mirabile ($204 \pm 92.6 \mu\text{m}$ [mean \pm s.d.], $n = 19$) compared to species without ($97.1 \pm 37.0 \mu\text{m}$ [mean \pm s.d.], $n = 12$) (phylogenetic analysis of variance simulation, $p < 0.001$, $n = 31$). In contrast, the analysis did not show any differences in the thickness of the outer retina between species with and without a choroid rete mirabile (phylogenetic analysis of variance simulation, $p = 0.51$, $n = 31$). Specifically, we identified significant differences in

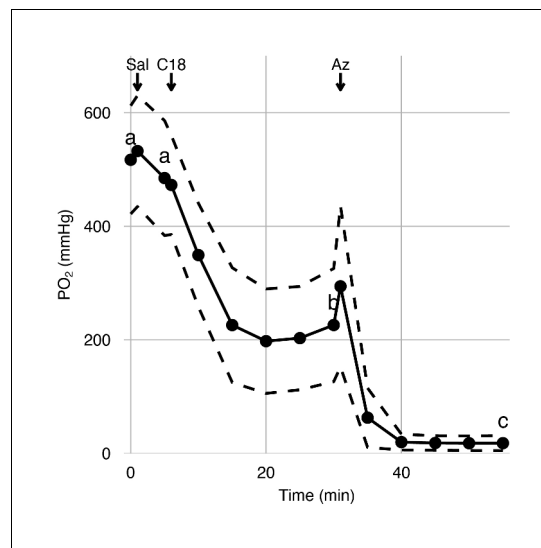


Figure 4. Effects of carbonic anhydrase inhibition on retinal oxygen secretion. Choroidal PO_2 was measured in anesthetized rainbow trout using an ultra-thin PO_2 electrode inserted into the choroid during sequential injections of saline, C18, or acetazolamide (Az) via a dorsal aorta catheter. The saline injection did not affect choroidal PO_2 , but the injection of C18 and Az led to sequential reductions in choroidal PO_2 , as indicated by letters that differ (linear mixed-effect model, $p < 0.001$). Black circles connected by solid lines represent mean choroidal PO_2 at 15 time points, and dashed lines represent standard error of mean ($n = 6$). The online version of this article includes the following figure supplement(s) for figure 4:

Figure supplement 1. Experimental protocol for in vivo inhibition of carbonic anhydrase.

retinal layer thickness between species with and without a choroid rete mirabile in the four layers positioned most distant to the choroid (i.e. the inner nuclear layer ($p=0.0499$, $n = 31$), the inner plexiform layer ($p=0.00754$, $n = 31$), the ganglion cell layer ($p=0.104$, $n = 31$), and the nerve fiber layer ($p=0.00726$, $n = 31$); **Figure 6—figure supplement 1**). These findings support the third hypothesis that the evolutionary gains and losses of the choroid rete mirabile during teleost radiation had large effects on the morphology of the inner retina, but not the outer retina.

Discussion

Our data reveal a mechanism by which active acidification of the blood in the eyes of teleosts greatly enhances O_2 secretion to their largely avascular retinas. Here, VHA is predicted to pump H^+ s into the lumen of the choroid rete mirabile, where paCA catalyzes the dehydration of H^+ and HCO_3^- into CO_2 for RBC acidification. In addition, by studying the mechanism using various different techniques, we were able to independently verify this pathway using biochemical assays, immunohistochemistry and western blotting. Furthermore, inhibiting a key component of the mechanisms in vivo, the activity of paCA, enabled us to link active O_2 secretion to the functional performance of the retina, where in particular, inner retinal function was impaired in the absence of active O_2 secretion. This finding corroborates with phylogenetic evidence of a pronounced expansion of the inner retina upon the evolution of the O_2 secretion mechanism. This novel pathway solves the mystery of the primary

route for RBC acidification to secrete O_2 into the retina, serving as a key exaptation for the adaptive increases in visual performance in early teleost evolution.

The role of the choroid rete mirabile in localized blood acidification

The Root effect and the ability of teleost blood to desaturate during a localized acidosis to increase retinal PO_2 have been known for almost a century (**Root, 1931**; **Steen, 1963b**), and this desaturation is a critical component of the O_2 secretory mechanism (**Waser and Heisler, 2005**; **Wittenberg and Wittenberg, 1962**). However, the role of the choroid rete mirabile and the specific mechanisms in blood acidification was poorly understood and was primarily shaped by observations by **Fairbanks et al., 1974**. They showed that CA was present in choroid rete mirabile homogenates and hypothesized that if this CA was expressed in the venous side of the rete, and if it was also plasma-accessible, then this paCA would catalyze the hydration of CO_2 into H^+ and HCO_3^- in the venous part of the rete, thereby facilitating the venous to arterial transport of HCO_3^- within the rete. However, this paCA-catalyzed CO_2 hydration in isolation appears maladaptive as it would i) buffer the H^+ s secreted into the blood in the pseudobranch, increasing the demands for anaerobic CO_2/H^+ -production by the retina to fuel O_2 secretion, ii) prevent counter-current multiplication of CO_2 in the rete, and iii) lead to a pronounced efflux of H^+ s from the rete into the systemic circulation. In contrast to this previous framework for choroid rete mirabile function, our data strongly support an active H^+ -secretory role of the choroid rete mirabile by identifying a VHA lining the endothelium (**Figure 7**). A co-localized paCA in the choroid rete mirabile dehydrates H^+ and HCO_3^- into CO_2 that

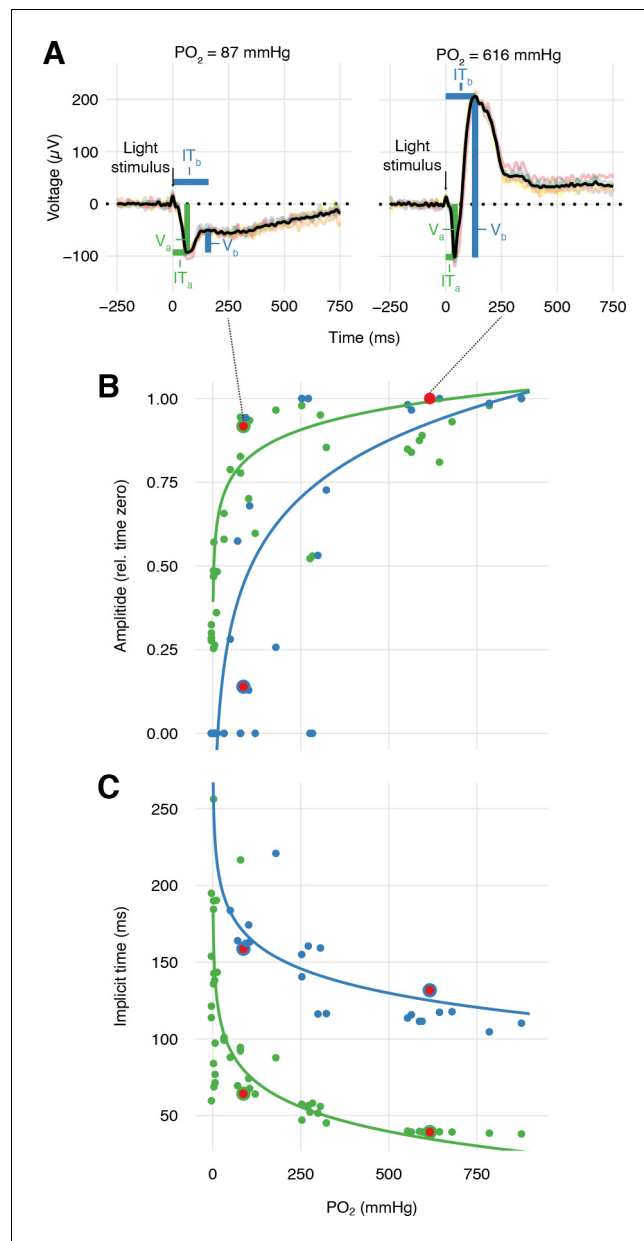


Figure 5. Effects of PO₂ on retinal function. (A) Representative sets of six electroretinograms (colored traces) at high and low PO₂ (right and left panels, respectively) measured after six 0.1 ms pulses of green light (black vertical arrow) and then averaged (black trace). The averaged electroretinograms were analyzed for the amplitude, V, and implicit time, IT, of the a- and b-wave (green and blue, respectively). Amplitudes (B) and implicit times (C) of the a- and b-wave in the electroretinogram of trout during progressive inhibition of retinal O₂ secretion by C18 and acetazolamide (n = 4). The properties of the electroretinograms in A are marked by red symbols. Solid lines are linear mixed-effect model fits to the data (all p < 0.001, see text for statistics).

can diffuse into the RBCs (Figure 7). The presence of plasma-accessible CA4 is critical for this last step, as fish plasma has no carbonic anhydrase activity (Henry et al., 1997). By catalyzing the otherwise slow dehydration reaction, the catalysis couples H⁺ secretion to the rapid production of CO₂ that, ultimately, drives the unloading of O₂ from Hb (Figure 7). This pathway is very significant for O₂ secretion, as inhibition of paCA with C18 resulted in a 60% reduction in choroidal PO₂. Thus, our data suggest that blood supplied from the pseudobranch is actively acidified within the choroid rete mirabile to activate the Root effect before the blood reaches the retina. This pathway does not

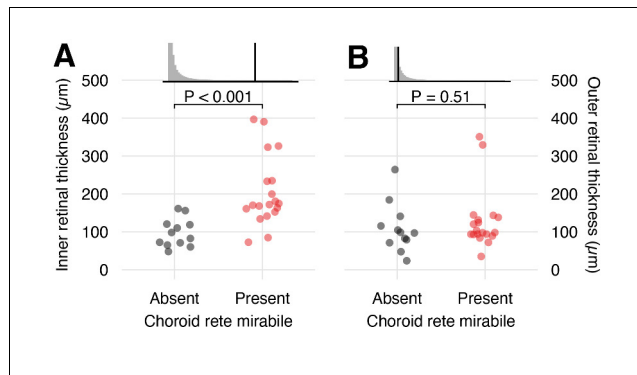


Figure 6. Effects of the presence of a choroid rete mirabile on the morphology of the inner- and outer retina. The transverse thickness of the inner- (A) and outer retina (B) in species with (red) and without (black) a choroid rete mirabile. Each dot represents species mean values obtained from the literature (Damsgaard et al., 2019). Effect sizes are visualized in the upper panels, showing the observed F-statistics (black vertical line) compared to a grey null-distributions of F-statistics from a phylogenetic analysis of variance simulation. This analysis showed a strong positive effect of the presence of a choroid rete mirabile on the inner retinal thickness ($p < 0.001$, $n = 31$), but not on outer retinal thickness ($p = 0.51$, $n = 31$).

The online version of this article includes the following figure supplement(s) for figure 6:

Figure supplement 1. Effects of the presence of a choroid rete mirabile on the retinal thickness of the individual retinal layers.

contradict pseudobranchial H^+ -secretion, as proposed earlier, but instead indicates that the two tissues may act in concert to actively augment O_2 unloading from Hb within the rete.

While the current data strongly support the functional significance of a VHA – CA4 pathway for RBC acidification in the choroid rete mirabile, measurements of pH and PCO_2 in the afferent and efferent vessels of the choroid rete mirabile are necessary to provide conclusive evidence of a proton secretory function of the choroid rete. Unfortunately, pharmacological VHA inhibition in live animals is not possible due to the involvement of VHA in multiple processes, including neurotransmitter

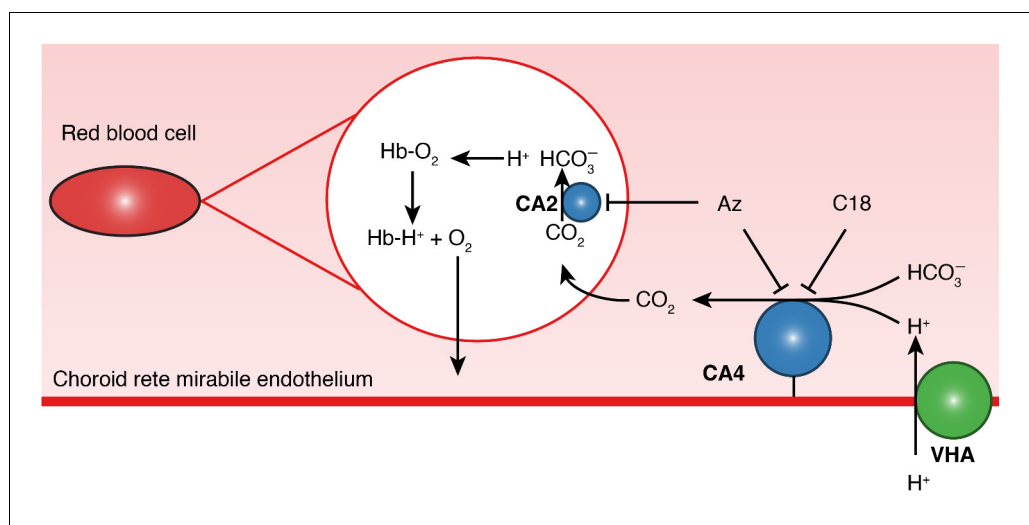


Figure 7. A proposed pathway for oxygen secretion in the choroid rete mirabile of teleost fishes. Endothelial H^+ -secretion by vacuolar-type H^+ -ATPase (VHA, green) drives CO_2 production facilitated by a plasma-accessible carbonic anhydrase (CA4, blue). This CO_2 diffuses across the red blood cell membrane and is then dehydrated by carbonic anhydrase 2 (CA2, blue), producing H^+ s which bind to hemoglobin (Hb) and release O_2 . C18 is a membrane-impermeable CA inhibitor that inhibits only the paCA (Rummer et al., 2013). Acetazolamide (Az) is a membrane-permeable CA inhibitor that rapidly inhibits both CA2 and CA4.

reuptake at synapses. Thus, further detailed studies on the role of VHA in acid excretion conducted *ex vivo* in isolated rete preparations are required.

Furthermore, our *in vivo* data suggest that the VHA – paCA pathway may not be the only mechanism for blood acidification to drive retinal O₂ secretion, as choroidal PO₂ remained above typical arterial values after paCA inhibition by C18. These results are indicative of pathways for anaerobic CO₂ production contributing to retinal O₂ secretion, where the produced CO₂ diffuses via the plasma and directly into the RBC without the need for paCA. Such pathways may include the pentose phosphate shunt, which has been suggested earlier to be involved in blood acidification in the retina (*Bridges et al., 1998; Pelster and Weber, 1991*).

The effect of oxygen secretion on retinal function

Our data showed a strong relationship between choroidal PO₂ and retinal function with reduced amplitudes and increased implicit times of the a- and b-waves in the electroretinogram upon reductions in choroidal PO₂. Earlier studies showed pronounced changes in the features of the electroretinogram upon acetazolamide administration (*Fonner et al., 1973*). These changes were linked to retinal hypoxemia, as acetazolamide administration had been observed to reduce retinal PO₂ in separate studies (*Fairbanks et al., 1969; Fairbanks et al., 1974*). Our setup allowed for the simultaneous measurements of choroidal PO₂ and the electroretinogram during progressive reductions in choroidal PO₂ to add insight into the quantitative relationship between retinal hypoxemia and function.

Our data showed that the a-wave amplitude appears relatively unaffected by progressive retinal hypoxemia at high choroidal PO₂, but rapidly decreases with reductions in choroidal PO₂ below ~100 mmHg. These data indicate that photoreceptor function was only affected by retinal hypoxemia when choroidal PO₂ fell below normal arterial levels. In contrast, the b-wave amplitude showed higher sensitivity to a reduction in choroidal PO₂, suggesting a more pronounced dependence of the inner retinal layers to the mechanism of O₂ secretion by the choroid rete. These results show a tremendous sensitivity of the retina to reductions in choroidal PO₂ where retinal hypoxemia likely impairs the rate of oxidative phosphorylation in the mitochondria followed by the inability to maintain the transmembrane ionic gradients required for phototransduction (*Bickler and Buck, 2007; Boutilier and St-Pierre, 2000*). These differences in sensitivity of the inner and outer retina to reductions in choroidal PO₂ possibly stems from their different positions relative to the O₂ supply from the choroid rete: The photoreceptors comprising the outer retina lie directly adjacent to the choroid and experience the highest part of the O₂ diffusion gradient and are therefore less sensitive to reductions in choroidal PO₂. However, the synaptic layers comprising the inner retina are positioned further from the choroid and are, therefore, much more affected by reductions in choroidal PO₂. These results suggest that any phenotypic changes in the capacity to deliver O₂ at a high PO₂ in the retina have the most pronounced effects on the function of the inner retina. Such phenotypic changes may include ontogenetic changes in the expression of Hb isoforms with altered Root effect (*Bianchini, 2012*), an ATP-mediated reduction in the Root effect during hypoxia acclimation (*Weber and Lykkeboe, 1978; Wood and Johansen, 1972*), and an arterial desaturation during hypoxia or exercise making a smaller O₂ concentration available for O₂ secretion. Assessing the interactions between vision and environmental stressors that affect blood O₂ transport may provide novel insight into the respiratory mechanisms that affect fishes' visual performance.

The choroid rete mirabile and the evolution of retinal functional morphology

Our *in vivo* identification of a higher PO₂ sensitivity of the inner- versus the outer retina suggests that any evolutionary change that increases choroidal PO₂ may act to offset an O₂ diffusion limitation on inner retinal O₂ supply and, thus, be a pre-requisite for the evolutionary expansion of the inner retina. Our interspecific comparison of retinal morphology in species with and without a choroid rete mirabile strongly supports this idea. Taken together, our *in vivo* and phylogenetic data independently suggests that the O₂ diffusion limitation to retinal thickness proposed in several studies (*Buttery et al., 1991; Chase, 1982; Country, 2017; Damsgaard et al., 2019; Yu and Cringle, 2001*) is mainly attributed to an O₂ constraint on the inner retinal morphology. A thicker inner retina can house more synaptic connections for intra-retinal detection of motion, changes in brightness,

and contrast generation in the inner plexiform layer before visual information is relayed via the ganglion cells to the brain (Rodieck, 1998). Thus, our findings imply that the origin of retinal O₂ secretion around 270 million years ago in a common teleost ancestor was associated with improved visual processing, which may have facilitated novel feeding strategies involving visual prey identification and tracking. Further, multiple groups have secondarily lost the O₂ secretory mechanism (Berenbrink et al., 2005; Damsgaard et al., 2019), which correspondingly suggest, that these groups have reduced capacities for visual processing.

Our retinal PO₂-values in white sturgeon and rainbow trout are consistent with expected values in the retina of species with and without a choroid rete mirabile, respectively (Wittenberg and Wittenberg, 1962). The evolutionary origin of O₂ secretion has mainly been discussed in the context of permitting the evolution of increased retinal thickness (Berenbrink et al., 2005; Damsgaard et al., 2019). However, the 10-fold higher choroidal PO₂ associated with the presence of a choroid rete mirabile was not associated with a proportional difference in retinal thickness between trout and sturgeon. Instead, the slope of the PO₂ profile was 6.2-fold higher in trout compared to sturgeon, which equals a proportionally higher O₂ consumption rate in the trout retina than the sturgeon retina (assuming equal diffusive capacity for O₂ in the retinae of the two species). Despite depending on two species only, this data set strongly suggests that the origin of O₂ secretion permitted not only the evolution of a thicker retina, but also the evolution of much higher metabolic rates of the retina. Increased retinal thickness is typically associated with a higher area density of photoreceptors (Jeffery and Williams, 1994; Potier et al., 2017; Querubin et al., 2009), which may explain the higher O₂ consumption rate, and which may provide an additional advantage to vision in terms of increased spatial resolution (Damsgaard et al., 2019).

Summary

The choroid rete mirabile in the eye of teleost fishes allows for the generation of exceptionally high PO₂s in the retina and permitted the functional evolution of some of the most extreme retinal phenotypes among vertebrates with substantial expansions in the retinal layers associated with visual processing. Our identification of the VHA-paCA pathway for blood acidification to facilitate retinal O₂ secretion represents a novel physiological function of the choroid rete mirabile in addition to counter-current gas-exchange, which together permit greatly enhanced O₂ delivery to the retina. Our data further suggest that the origin of O₂ secretion not only permitted the evolution of a thicker retina, but also added fuel to the metabolic fire to visual perception. These significant advantages to vision possibly allowed teleost fishes to explore new food resources and colonize novel environments, which may have contributed to the extraordinary adaptive radiation of the teleost fishes, which today represent half of all vertebrates (Berenbrink et al., 2005; Randall et al., 2014).

Materials and methods

Animal housing

Rainbow trout (*Oncorhynchus mykiss*, Walbaum, 1792) and white sturgeon (*Acipenser transmontanus*, Richardson, 1836) were purchased as juveniles from Miracle Springs Inc (Mission, BC) and gifted from Vancouver Island University (Nanaimo, BC), respectively. The fish were housed in circular flow-through tanks with dechlorinated Vancouver tap water at 7°C until experimentation in the Department of Zoology at the University of British Columbia (UBC). The fish were fed to satiation with commercial dry pellets three times weekly. All procedures were conducted according to the Canadian Council on Animal Care and approved by the UBC Animal Care Committee (Protocol no. A15-0266).

Retinal PO₂ profiling

This experimental series was performed to assess baseline values for retinal PO₂ in rainbow trout, for comparison with those in white sturgeon which was not expected to possess retinal O₂ secretion based on the lack of a choroid rete mirabile in this genus (Berenbrink et al., 2005; Damsgaard et al., 2019). Individual animals were netted out of their holding tank, immersed into oxygenated dechlorinated tap water containing 50 mg l⁻¹ pH-neutralized MS-222 (3-aminobenzoic acid ethylester buffered with HCO₃⁻). When branchial ventilation stopped, the animal was transferred to a surgical table with the left side up. The gills were constantly irrigated with oxygenated

dechlorinated tap water containing 40–50 mg l⁻¹ pH-neutralized MS-222 to maintain a surgical plane throughout the following experimental procedure, which lasted approximately 30 min.

Three rainbow trout (113 ± 10 g) and three sturgeon (875 ± 120 g) were used to measure transretinal PO₂-profiles. First, an 18G needle was used to make a small puncture in the cornea in the pupil's anterior midline inside the iris. This procedure allowed direct access to the vitreous humor and underlying retina unobstructed by the lens. Then, a thin PO₂ electrode with a 25 µm tip diameter (Unisense A/S, Aarhus, Denmark) was inserted into the eye through the corneal puncture using a motor-controlled micromanipulator (Zeiss, Germany). The electrode penetrated the retina in steps of 25 µm for 5 s each, while PO₂ was recorded with a temporal resolution of 100 ms on a computer using the manufacturer's software (Unisense Sensor Trace Suite). All PO₂ measurements were water vapor corrected using daily barometric pressure and relative humidity. After retinal PO₂ profiling, each animal was euthanized by adding additional MS-222 to 100 mg l⁻¹ and sampled as described below.

Histology

Eyes from rainbow trout and white sturgeon were excised and fixed in 4% buffered paraformaldehyde. Eyes were dehydrated in an ethanol series (70%, 96%, 99.9%), embedded in paraffin, and cut in 5 µm intervals sections along the ventral-to-dorsal axis. All sections were stained with hematoxylin and eosin and imaged using bright-field microscopy with 4×, 10×, 20×, and 60× objectives. Maximal transverse thickness of the retina was measured as described in *Damsgaard et al., 2019*.

Vascular casts and computed tomography scanning

To identify the three-dimensional anatomy of the vascular structures involved in O₂ secretion in the eye of rainbow trout, we generated a vascular cast of the eye by injecting a polymer-based radiopaque contrast agent (Microfil MV-122, Flow Tech Inc, USA), which was imaged by micro-CT.

One rainbow trout was anesthetized as described above and placed on a surgical table with the ventral side up. An incision was made to access the heart, and a polyethylene catheter (PE50) was inserted into the ventral aorta and secured with silk sutures. First, the animal was perfused with a 60 ml kg⁻¹ 0.9% NaCl solution containing 50 IU ml⁻¹ Na-heparin at a rate of 0.2 ml min⁻¹, using a syringe pump (Harvard Apparatus PHD 2000, USA). Then, the animal was perfused with 60 ml kg⁻¹ Microfil solution (compound:diluent:curing agent mix ratio was 1:3:0.4) at a rate of 0.1 ml min⁻¹, and the animal was placed on ice for 4 hr until the resin had hardened. Finally, the head was dissected and placed in 10 volumes of 4% buffered formaldehyde and stored at 4°C for imaging.

First, micro-CT was performed on the intact head region using an XtremeCT system (Scanco Medical AG, Brüttisellen, Switzerland) with 1500 projections/180° and an isotropic voxel size of 41 µm, an X-ray tube voltage of 59.4 kVp, an X-ray type current of 119 µA, and an integration time of 132 ms. Then, the right eye was carefully excised and scanned at a higher resolution using a Scanco Medical µCT 35 scanner in high-resolution mode (1000 projections/180°) with an isotropic voxel size of 10 µm, an X-ray tube voltage of 45 kVp, an X-ray tube current of 177 µA, and an integration time of 2400 ms.

Amira 5.6 (FEI, Visualization Sciences Group) software was used for anatomical model building.

Perfusion clearing and fixation of tissues

Twelve rainbow trout were netted out of their holding tank individually and immersed into aerated dechlorinated tap water and euthanized with 100 mg l⁻¹ pH-neutralized MS222. When opercular ventilation stopped, the fish was transferred to a custom-made Styrofoam fish holder and injected in the caudal vein with 1 ml 0.9% NaCl containing 100 IU ml⁻¹ Na-heparin using a 23G hypodermic needle. Then, the bulbus was cannulated with a PE50 catheter, the tail cut off, and the animal was perfused with 0.9% NaCl containing 100 IU ml⁻¹ heparin via the catheter to remove all RBCs.

In four of those fish, the saline injection was followed by injection of 20 ml 4% paraformaldehyde in 0.9% NaCl. Both eyes were resected, fixed for 6 hr in 4% paraformaldehyde in 0.9% NaCl at 4°C, transferred to 50% ethanol overnight, and stored in 70% ethanol. Fixed tissues were shipped to the Scripps Institution of Oceanography (San Diego, CA) for immunohistochemistry.

In the remaining eight fish, the choroid rete mirabile was resected, flash-frozen in liquid nitrogen, and stored at -80°C for western blotting and to measure the enzymatic activity of VHA.

Immunolocalization of vacuolar-type proton-ATPase and carbonic anhydrase four in the choroid rete mirabile

Immunohistochemistry

Localization of CA4 in the rete was with a custom affinity purified rabbit polyclonal antibody raised against amino acids 57–74 (TRRTLTPDERLTPFTFTGY; at 0.34 mg ml⁻¹; Abgent; San Diego, USA) of rainbow trout CA4 (GenBank AAR99330) and the antibody has been used and described in detail in previous studies on dogfish and rainbow trout (Georgalis et al., 2006; Gilmour et al., 2007). Other sections were immunolabeled with a rabbit anti-VHA antibody raised against the conserved β -subunit of VHA (AREEVPGRRGFPY; at 3 mg ml⁻¹; GenScript, Piscataway USA), which has been used to localize VHA in teleost fish blood vessels and inner ear ionocytes (Kwan et al., 2020). For immunohistochemistry, fixed tissues were stepwise dehydrated in ethanol, cleared in SafeClear II (Fisher Scientific 23044192; Hampton, USA) and embedded in paraffin. Thick sections (20 μ m) were cut on a KD-1508B microtome (KEDEE, Zhejiang, China) and mounted on Superfrost Plus (Fisher Scientific 12-550-15) microscope slides. After clearing the paraffin, the tissue sections were stepwise rehydrated, and a hydrophobic barrier was drawn around each section (ImmEdge, Vector Labs NC9545623; Burlingame, USA). After a 5-min wash in phosphate buffered saline (PBS, Corning 46-013 CM; Corning, USA), about 100 μ L of blocking buffer (PBS with 2% normal goat serum and 0.2% keyhole limpet hemocyanin) was pipetted onto each section and incubated in a humidified chamber for 1 hr at room temperature. Thereafter, the blocking buffer was decanted, and sections were incubated with the primary antibodies (CA4: 1:250; VHA: 1:500) in blocking buffer overnight at room temperature in a humidified chamber. On each slide, one of the tissue sections was used as a negative control that was incubated with blocking buffer without a primary antibody. Detection of the primary antibodies was with a goat anti-rabbit IgG conjugated to Alexa 488 (Invitrogen A32731, Carlsbad, USA). Sections were rinsed three times with PBS-T (PBS with 0.2% tween 20), then incubated with secondary antibody (1:500) and DAPI (1:1000) in a humidified chamber for 1 hr at room temperature. Sections were rinsed three times in PBS-T, and coverslips were mounted with Fluoro-Gel (EMS, Hatfield, USA) and sealed with nail polish. Sections were imaged with a Zeiss Observer Z1 inverted microscope with LSM 800 confocal and super-resolution Airyscan detector (Oberkochen, Germany) and using ZEN systems blue edition software (v2.6).

Western blotting

The specificity of CA4 VHA antibodies was validated by Western blotting. Therefore, frozen choroid rete mirabile samples were first homogenized with a mortar and pestle under liquid nitrogen, and the powdered tissue was resuspended in homogenization buffer on ice (in mmol l⁻¹: 250 sucrose, 1 EDTA, 30, Tris at pH 7.5) with protease inhibitors DTT (Dithiothreitol; 1 mol l⁻¹), PMSF (phenylmethylsulfonyl fluoride; 200 mmol l⁻¹) and BHH (benzamidine hydrochloride hydrate; 10 mmol l⁻¹). After that, rete tissues were homogenized further in a glass homogenizer and then centrifuged at 500 \times g for 10 min to obtain a crude homogenate from the supernatant. Protein concentrations were measured with a Quick-start Bradford's assay (Bio-Rad, Hercules, USA) according to the manufacturer's instructions, and bovine serum albumin was used for standards. Samples were diluted in 4 \times Laemmli buffer (Bio-Rad 1610747) and heated at 70°C for 10 min. Aliquots of 5 μ g of protein were loaded into each lane of a Mini-Protean TGX SDS-gel (Bio-Rad, 4568026) and separated at 60 V for 15 min followed by 200 V for 45 min. Proteins were then wet-transferred onto 0.2 μ m Immoblot PVDF membranes (BioRad1620177) at 90 mA for 12 hr at 4°C. The transfer was assessed using total protein staining with 0.5% Ponceau-S in 1% acetic acid. Blots were rinsed with TBS-T and blocked with 10% skim milk powder in TBS-T on a shaker table over night at 4°C. After that, the membrane was cut into sections that were probed with primary antibodies in blocking buffer (CA4 and VHA 1:2000) on a shaker table for 1 hr at room temperature. Additionally, peptide preabsorption (1:5; antibody:peptide) served as a negative control for VHA. Protein size was assessed against a Precision Plus Protein Dual Color ladder (BioRad 1610374). All membranes were rinsed three times with TBS-T for 5 min at room temperature and were then incubated with a 1:5000 dilution of a goat anti-rabbit secondary antibody conjugated to horseradish peroxidase (IgG-HRP, Bio-Rad 1706515), on a shaker table for 1 hr at room temperature. Finally, membranes were rinsed with TBS-T, and proteins were visualized using a Clarity Western ECL chemiluminescent HRP substrate (Bio-Rad

1705061). Images were acquired in the Bio-Rad Universal III Hood and Image Lab software (Bio-Rad, v6.0.1).

Enzymatic activity of vacuolar-type proton-ATPase in the choroid rete mirabile

To determine the activity of VHA in the choroid rete mirabile, we used a method in which ATP hydrolysis was linked to the oxidation of NADH via lactate dehydrogenase and pyruvate kinase and the reaction was followed spectrophotometrically (McCormick, 1993). The choroid rete mirabile were homogenized on a Precellys 24 tissue homogenizer (Bertin Technologies SAS, Montigny-le-Bretonneux, France; 5,000 rpm, 20 s, 4°C) using 1.0 mm ceria stabilized zirconium oxide beads (Next Advance, Averill Park, NY) in SEID buffer (150 mmol l⁻¹ sucrose, 10 mmol l⁻¹ EDTA, 50 mmol l⁻¹ imidazole, 0.1% sodium deoxycholate, pH 7.3). The homogenate was centrifuged (5,000 rpm, 1 min, 4°C), and the supernatant was used for the subsequent enzymatic assay. The ATPase activity was monitored in triplicate at 340 nm and 25°C in the absence or presence of 1 mmol l⁻¹ ouabain or 1 mmol l⁻¹ ouabain with 4 mmol l⁻¹ N-ethylmaleimide. The maximum velocity of the hydrolysis reaction was determined as the maximal slope of absorbance over time. Sample protein concentration was measured using Bradford's reagent and bovine serum albumin as protein standards. The maximum reaction velocity (V_{max}) was expressed as the rate of ADP hydrolysis per mg protein. The Na⁺/K⁺-ATPase activity was determined by subtracting control and ouabain V_{max} , and VHA activity was determined by subtracting V_{max} during ouabain and ouabain+NEM inhibition.

The role of carbonic anhydrase in retinal oxygen secretion in vivo

This experimental series was designed to identify and quantify the role of paCA on O₂ secretion (right eye) and retinal activity (left eye) by injecting intra- and extracellular CA inhibitors through a dorsal aorta catheter. The instrumentation consisted of three steps and lasted approximately 30 min in total per animal.

First, six rainbow trout (624 ± 259 g) were anesthetized as in *Retinal PO₂ profiling* and instrumented with an indwelling catheter in the dorsal aorta (PE50) that was secured to the dorsal lining of the mouth with a silk suture (Soivio et al., 1975). The fish was positioned in an upright position while still irrigating the gills with oxygenated water containing the anesthetic. During this procedure, the animal's position was fixed by stereotaxis, and its body was covered in wet paper towels to prevent cutaneous desiccation.

Second, a 23G needle was used to make a small puncture in the cornea into the anterior midline of the pupil of the left eye, and an Ag/AgCl electrode (0.008" diameter silver wire, ~4 mm chlorided in sodium hypochlorite solution; Cat No. 786500, A-M Systems, WA) connected to the positive terminal of an amplified head stage was introduced into the vitreous humor of that eye using forceps (Fonner et al., 1973). A second identical Ag/AgCl reference electrode, connected to the negative terminal of the head stage, was inserted into the left nare, and two Ag/AgCl pellet electrodes (A-M systems) were used to ground the animal, one placed in the mouth and the other on the back. The potential between the two head stage electrodes was amplified using a differential amplifier (DP-311, Warner Instruments, Hamden, CT) set to 0.1 to 100 Hz (high-pass and low-pass, respectively) and gain set at 10 k. The amplifier's output was digitized using a Powerlab 8/35 DAQ analog to digital converter (ADInstruments, Bella Vista, NSW, Australia) and recorded continuously at 400 Hz on a laptop running LabChart software (ADInstruments). The green die of a tri-color LED (ASMT-MT00-00001, Broadcom Ltd., CA; peak wavelength 525 nm) was placed behind a semi-opaque white acrylic diffuser (2.7 mm thick, ST-S-401, Sumipex, Singapore) that was then positioned 5 cm away from the left eye to allow for light stimulations of the eye every fifth min to quantify retinal function (Figure 4—figure supplement 1). Six 0.1 ms-long pulses of green light spaced by 1 s were emitted from the LED by using the 0–10 V output of the PowerLab to drive a dimmable, buck-boost LED driver (A011-D-V-350 FlexBlock, LEDdynamics, Inc, VT). Electroretinogram data was not recorded in two of the six individuals due to electrode displacement during the insertion of the PO₂-sensitive electrode.

Third, an 18G needle was used to make a small puncture in the cornea at either the anterior or caudal midline of the pupil of the right eye. A PO₂ electrode with a 25-μm-thick tip was introduced into the eye as described in *Retinal PO₂ profiling* and was positioned in the choroid, as identified as

the tip position where PO_2 was maximal. Then, the room was darkened to allow the fish to dark adapt for 15 min, and all subsequent procedures were performed in complete darkness.

The experimental series was initiated by six light stimuli separated by 1 s at time zero and every 5 min throughout the 55 min protocol (**Figure 4—figure supplement 1**). At time 1 min, a bolus of $250 \mu\text{l kg}^{-1}$ 0.9% NaCl solution with 50 IU ml^{-1} heparin (saline) was injected into the dorsal aorta catheter. The effect of saline on the electroretinogram and choroidal PO_2 was assessed by comparing time points 0 and 5 min. At time 6 min, a bolus of $250 \mu\text{l kg}^{-1}$ body mass of saline with DMSO (80:20) and 10 mmol l^{-1} C18, a CA inhibitor with slow membrane permeability (**Scozzafava et al., 2000; Supuran, 2008**), was injected into the dorsal aorta catheter followed by a $250 \mu\text{l}$ saline bolus to clear the catheter (final blood C18 concentration of 0.2 mmol l^{-1}). A previous study has shown that this concentration of C18 will not significantly inhibit CA within rainbow trout RBCs over a 30 min time-frame (**Rummer et al., 2013**); therefore, for the duration of our protocol C18 was functionally membrane-impermeable. The effect of C18 on the electroretinogram and choroidal PO_2 was assessed every five mins over the next 25 min. At time 31 min, a bolus of $250 \mu\text{l kg}^{-1}$ of a 27 mmol l^{-1} acetazolamide, a highly membrane-permeable CA inhibitor (prepared in 50:50 saline and DMSO), was injected into the dorsal aorta catheter to achieve final blood acetazolamide concentration of $0.135 \text{ mmol l}^{-1}$. The effect of acetazolamide on the electroretinogram and choroidal PO_2 was assessed every five min over the next 25 min. All injections were followed by a $250 \mu\text{l}$ saline bolus to clear the catheter. The fish remained anesthetized throughout the following experimental procedure and was euthanized upon completion by immersion into water containing 100 mg l^{-1} pH-neutralized MS-222.

Calculations and statistical analyses

In the retinal PO_2 profiling, the effects of species and diffusion distance on retinal PO_2 was assessed using a linear mixed-effect model with species (rainbow trout or white sturgeon) and distance from the choroid as fixed effects and using individual fish as a random effect using the *lmer()*-function in the *lme4*-package for R (**Bates et al., 2015**). A likelihood ratio test was used to assess the effects of each fixed effect by comparing model fits with and without the fixed effect of interest.

The effects of injection of saline, C18, and acetazolamide on choroidal PO_2 were tested using a linear mixed-effect model using time as a fixed effect and individual fish as a random effect. To avoid problems with too many multiple comparisons, we compared choroidal PO_2 at time points 0, 5, 30, and 55 min only (see **Figure 4—figure supplement 1** for timeline). These four time points were included in the analysis to represent values for control (0 min), the effect of saline injection (5 min), the effect of C18 injection (30 mins), and the effect of acetazolamide injection (55 mins). Pairwise differences between time points were identified with a Tukey's honest significant difference test with a Holm correction.

The electroretinograms were analyzed for each of the twelve stimulus time points (see **Figure 4—figure supplement 1** for timeline). The electroretinogram was recorded for six stimuli, which were averaged to remove noise, and this averaged electroretinogram was analyzed for implicit time (IT) and amplitudes (V) of the a- and b-waves (see **Figure 5A** for graphical representation of the electroretinogram containing annotations for amplitudes and implicit times of the a- and b-waves). The a-wave amplitude (V_a) was found as the maximal hyperpolarization relative to the pre-stimulus potential (**Figure 5A**). The b-wave amplitude (V_b) was found as the maximal depolarization relative to V_a . IT of the two waves was determined as the time from the stimulus to reach V_a and V_b . All measured electroretinograms had a distinct a-wave, but a distinct b-wave was lost at low PO_2 s, so for those stimuli, V_b was set to zero, and IT_b was excluded from the subsequent analysis.

The effect of choroidal PO_2 on the implicit time of the a- and b-waves was tested using a linear mixed-effect model using \log_{10} -transformed PO_2 and wave (a- or b-wave) as fixed effects and individual fish as a random effect. The choice of using \log_{10} -transformed PO_2 rather than absolute PO_2 in the models was based on model selection using Akaike weight.

To test the effects of the presence of the choroid rete mirabile on the morphology of the inner and outer retina, we summarized 50,000 phylogenetic analysis of variance simulations (**Garland et al., 1993**) using *phylANOVA()*-function in the *phytools*-package in R (**Revell, 2012**) using published morphological data on the retina (**Damsgaard et al., 2019**) from 31 species, and a using a maximum clade credibility tree generated in **Damsgaard et al., 2020** from 100 Bayesian posterior

probability trees from *Rabosky et al., 2018*. The significance level was set to 0.05. All raw data and R scripts to analyze the data are available on https://figshare.com/articles/Source_data_1/12319763.

Acknowledgements

We thank Jacelyn Shu and William K Milsom for technical assistance, Kathleen M Gilmour, Jonathan M Wilson, Steve F Perry, and Stephen D McCormick for contributing carbonic anhydrase antibodies, Dan Baker for the sturgeon, Kristian Beedholm for help with data analysis, and Jacelyn Shu for illustrating the rainbow trout in **Figure 4—figure supplement 1**.

Additional information

Funding

Funder	Grant reference number	Author
Carlsbergfondet	CF16-0713	Christian Damsgaard
Carlsbergfondet	CF17-0195	Christian Damsgaard
Carlsbergfondet	CF18-0658	Christian Damsgaard
Carlsbergfondet	CF17-0778	Henrik Lauridsen
National Science Foundation	IOS 1754994	Martin Tresguerres
National Science Foundation	NSF Graduate Research Fellowship	Garfield T Kwan
Velux Fonden		Henrik Lauridsen Jesper S Thomsen
Natural Sciences and Engineering Research Council of Canada	2018-04172	Colin J Brauner

The study design, data collection, and interpretation were not influenced by any funders.

Author contributions

Christian Damsgaard, Conceptualization, Data curation, Formal analysis, Funding acquisition, Investigation, Visualization, Methodology, Writing - original draft, Project administration, Writing - review and editing; Henrik Lauridsen, Conceptualization, Resources, Formal analysis, Funding acquisition, Investigation, Visualization, Methodology, Writing - review and editing; Till S Harter, Conceptualization, Formal analysis, Investigation, Visualization, Methodology, Writing - review and editing; Garfield T Kwan, Formal analysis, Funding acquisition, Investigation, Visualization, Methodology, Writing - review and editing; Jesper S Thomsen, Resources, Funding acquisition, Investigation, Writing - review and editing; Anette MD Funder, Investigation, Writing - review and editing; Claudiu T Supuran, Resources, Writing - review and editing; Martin Tresguerres, Colin J Brauner, Conceptualization, Resources, Supervision, Funding acquisition, Methodology, Writing - review and editing; Philip GD Matthews, Conceptualization, Resources, Supervision, Investigation, Methodology, Writing - review and editing

Author ORCIDs

Christian Damsgaard  <https://orcid.org/0000-0002-5722-4246>

Henrik Lauridsen  <https://orcid.org/0000-0002-8833-4456>

Till S Harter  <https://orcid.org/0000-0003-1712-1370>

Garfield T Kwan  <https://orcid.org/0000-0001-9183-2731>

Jesper S Thomsen  <http://orcid.org/0000-0001-9386-6679>

Martin Tresguerres  <http://orcid.org/0000-0002-7090-9266>

Philip GD Matthews  <https://orcid.org/0000-0003-0682-8522>

Ethics

Animal experimentation: All procedures were conducted according to the Canadian Council on Animal Care and approved by the UBC Animal Care Committee (Protocol no. A15-0266).

Decision letter and Author response

Decision letter <https://doi.org/10.7554/eLife.58995.sa1>

Author response <https://doi.org/10.7554/eLife.58995.sa2>

Additional files**Supplementary files**

- Supplementary file 1. Three-dimensional overview of the vasculature of the trout eye. Micro-CT-generated interactive overview of the ocular vasculature in a rainbow trout injected with a radiopaque contrast agent in the ventral aorta. Open the file in Adobe Acrobat Reader nine or higher and activate the 3D feature by clicking on the model. Then use the cursor to interact with the model or select pre-defined views similar to **Figure 1—figure supplement 1**.
- Transparent reporting form

Data availability

All raw data and R scripts to analyze the data are available on Figshare (<https://doi.org/10.6084/m9.figshare.12319763>).

The following dataset was generated:

Author(s)	Year	Dataset title	Dataset URL	Database and Identifier
Damsgaard C	2020	Source data 1	https://figshare.com/articles/Source_data_1/12319763	Figshare, 12319763

The following previously published dataset was used:

Author(s)	Year	Dataset title	Dataset URL	Database and Identifier
Damsgaard C, Lauridsen H, Anette MD, Thomsen JS, Desvignes T, Crossley DA, Moller PR, Huong DTT, Phoung NT, Detrich HW, Bruel A, Wilkens H, Nyengaard JR, Berenbrink M, Bayley M, Wang T	2019	Retinaevolution	https://github.com/christiandamsgaard/Retinaevolution	Github, cc66d8d

References

- Barnett CH.** 1951. The structure and function of the choroidal gland of teleostean fish. *Journal of Anatomy* **85**: 113–119. PMID: [14824024](https://pubmed.ncbi.nlm.nih.gov/14824024/)
- Bates D, Mächler M, Bolker B, Walker S.** 2015. Fitting linear Mixed-Effects models using lme4. *Journal of Statistical Software* **67**:1–48. DOI: <https://doi.org/10.18637/jss.v067.i01>
- Bellhorn RW.** 1997. Retinal nutritive systems in vertebrates. *Seminars in Avian and Exotic Pet Medicine* **6**:108–118. DOI: [https://doi.org/10.1016/S1055-937X\(97\)80018-7](https://doi.org/10.1016/S1055-937X(97)80018-7)
- Berenbrink M, Koldkjaer P, Kepp O, Cossins AR.** 2005. Evolution of oxygen secretion in fishes and the emergence of a complex physiological system. *Science* **307**:1752–1757. DOI: <https://doi.org/10.1126/science.1107793>, PMID: [15774753](https://pubmed.ncbi.nlm.nih.gov/15774753/)
- Bianchini K.** 2012. The Ontogeny of Blood Oxygen Transport and the Hypoxia Response in Early Life Stages of the Rainbow Trout, *Oncorhynchus mykiss*. Masters' thesis. The University of Guelph.

- Bickler PE**, Buck LT. 2007. Hypoxia tolerance in reptiles, amphibians, and fishes: life with variable oxygen availability. *Annual Review of Physiology* **69**:145–170. DOI: <https://doi.org/10.1146/annurev.physiol.69.031905.162529>, PMID: 17037980
- Boesch ST**, Niederstätter H, Pelster B. 2003. Localization of the vacuolar-type ATPase in swimbladder gas gland cells of the european eel (*Anguilla anguilla*). *Journal of Experimental Biology* **206**:469–475. DOI: <https://doi.org/10.1242/jeb.00095>, PMID: 12502767
- Boutilier RG**, St-Pierre J. 2000. Surviving hypoxia without really dying. *Comparative Biochemistry and Physiology Part A: Molecular & Integrative Physiology* **126**:481–490. DOI: [https://doi.org/10.1016/S1095-6433\(00\)00234-8](https://doi.org/10.1016/S1095-6433(00)00234-8)
- Brauner CJ**, Shartau RB, Damsgaard C, Esbaugh AJ, Wilson RW, Grosell M. 2019. Acid-base physiology and CO₂ homeostasis: Regulation and compensation in response to elevated environmental CO₂. In: Grosell M, Munday P. L, Farrell A. P, Brauner C. J (Eds). *Fish Physiology*. Elsevier Inc. p. 69–132.
- Bridges CR**, Berenbrink M, Müller R, Waser W. 1998. Physiology and biochemistry of the pseudobranch: an unanswered question? *Comparative Biochemistry and Physiology Part A: Molecular & Integrative Physiology* **119**:67–77. DOI: [https://doi.org/10.1016/S1095-6433\(97\)00405-4](https://doi.org/10.1016/S1095-6433(97)00405-4)
- Buttery RG**, Hinrichsen CF, Weller WL, Haight JR. 1991. How thick should a retina be? A comparative study of mammalian species with and without intraretinal vasculature. *Vision Research* **31**:169–187. DOI: [https://doi.org/10.1016/0042-6989\(91\)90110-Q](https://doi.org/10.1016/0042-6989(91)90110-Q), PMID: 2017880
- Chase J**. 1982. The evolution of retinal vascularization in mammals. A comparison of vascular and avascular retinæ. *Ophthalmology* **89**:1518–1525. DOI: [https://doi.org/10.1016/s0161-6420\(82\)34608-4](https://doi.org/10.1016/s0161-6420(82)34608-4)
- Copeland DE**. 1980. Functional vascularization of the teleost eye. *Current Topics in Eye Research* **3**:219–280. PMID: 6212198
- Country MW**. 2017. Retinal metabolism: a comparative look at energetics in the retina. *Brain Research* **1672**:50–57. DOI: <https://doi.org/10.1016/j.brainres.2017.07.025>, PMID: 28760441
- Damsgaard C**, Findorf I, Helbo S, Kocagoz Y, Buchanan R, Huang DTT, Weber RE, Fago A, Bayley M, Wang T. 2014. High blood oxygen affinity in the air-breathing swamp eel *Monopterus albus*. *Comparative Biochemistry and Physiology Part A: Molecular & Integrative Physiology* **178**:102–108. DOI: <https://doi.org/10.1016/j.cbpa.2014.08.001>
- Damsgaard C**, Lauridsen H, Funder AM, Thomsen JS, Desvignes T, Crossley DA, Møller PR, Huang DT, Phuong NT, Detrich HW, Brüel A, Wilkens H, Warrant E, Wang T, Nyengaard JR, Berenbrink M, Bayley M. 2019. Retinal oxygen supply shaped the functional evolution of the vertebrate eye. *eLife* **8**:e52153. DOI: <https://doi.org/10.7554/eLife.52153>, PMID: 31820735
- Damsgaard C**, Baliga VB, Bates E, Burggren W, McKenzie DJ, Taylor E, Wright PA. 2020. Evolutionary and cardio-respiratory physiology of air-breathing and amphibious fishes. *Acta Physiologica* **228**:e13406. DOI: <https://doi.org/10.1111/apha.13406>, PMID: 31630483
- Fairbanks MB**, Hoffert JR, Fromm PO. 1969. The dependence of the oxygen-concentrating mechanism of the teleost eye (*Salmo gairdneri*) on the enzyme carbonic anhydrase. *The Journal of General Physiology* **54**:203–211. DOI: <https://doi.org/10.1085/jgp.54.2.203>, PMID: 4978732
- Fairbanks MB**, Hoffert JR, Fromm PO. 1974. Short circuiting the ocular oxygen concentrating mechanism in the teleost *Salmo gairdneri* using carbonic anhydrase inhibitors. *The Journal of General Physiology* **64**:263–273. DOI: <https://doi.org/10.1085/jgp.64.3.263>, PMID: 4415760
- Fonner DB**, Hoffert JR, Fromm PO. 1973. The importance of the counter current oxygen multiplier mechanism in maintaining retinal function in the teleost. *Comparative Biochemistry and Physiology Part A: Physiology* **46**:559–567. DOI: [https://doi.org/10.1016/0300-9629\(73\)90107-2](https://doi.org/10.1016/0300-9629(73)90107-2)
- Garland T**, Dickerman AW, Janis CM, Jones JA. 1993. Phylogenetic analysis of covariance by computer simulation. *Systematic Biology* **42**:265–292. DOI: <https://doi.org/10.1093/sysbio/42.3.265>
- Georgalis T**, Gilmour KM, Yorston J, Perry SF. 2006. Roles of Cytosolic and membrane-bound carbonic anhydrase in renal control of acid-base balance in rainbow trout, *Oncorhynchus mykiss*. *American Journal of Physiology-Renal Physiology* **291**:F407–F421. DOI: <https://doi.org/10.1152/ajprenal.00328.2005>, PMID: 16571594
- Gilmour KM**, Bayaa M, Kenney L, McNeill B, Perry SF. 2007. Type IV carbonic anhydrase is present in the gills of spiny dogfish (*Squalus acanthias*). *American Journal of Physiology. Regulatory, Integrative and Comparative Physiology* **292**:R556–R567. DOI: <https://doi.org/10.1152/ajpregu.00477.2006>, PMID: 16973930
- Henry RP**, Gilmour KM, Wood CM, Perry SF. 1997. Extracellular carbonic anhydrase activity and carbonic anhydrase inhibitors in the circulatory system of fish. *Physiological Zoology* **70**:650–659. DOI: <https://doi.org/10.1086/515878>, PMID: 9361139
- Jeffery G**, Williams A. 1994. Is abnormal retinal development in albinism only a mammalian problem? normality of a hypopigmented avian retina. *Experimental Brain Research* **100**:47–57. DOI: <https://doi.org/10.1007/BF00227278>, PMID: 7813652
- Kern G**, Bösch ST, Unterhuber E, Pelster B. 2002. Mechanisms of acid secretion in pseudobranch cells of rainbow trout (*Oncorhynchus mykiss*). *The Journal of Experimental Biology* **205**:2943–2954. PMID: 12177159
- Kwan GT**, Smith TR, Tresguerres M. 2020. Immunological characterization of two types of ionocytes in the inner ear epithelium of pacific chub mackerel (*Scomber japonicus*). *Journal of Comparative Physiology B* **190**:419–431. DOI: <https://doi.org/10.1007/s00360-020-01276-3>, PMID: 32468089
- Linsenmeier RA**, Braun RD. 1992. Oxygen distribution and consumption in the cat retina during normoxia and hypoxemia. *The Journal of General Physiology* **99**:177–197. DOI: <https://doi.org/10.1085/jgp.99.2.177>, PMID: 1613482

- McCormick SD.** 1993. Methods for nonlethal gill biopsy and measurement of Na^+ , K^+ -ATPase activity. *Canadian Journal of Fisheries and Aquatic Sciences* **50**:656–658.
- Müller J.** 1841. *Vergleichende Anatomie Der Myxinoïden*. III. Über Das Gefäßsystem. Abh Kgl Dt Akad Wiss Berlin.
- Pelster B, Weber RE.** 1991. The Physiology of the Root Effect. In: Castellini M. A, Fiévet B, Hand S. C, Motais R, Pelster B, Weber R. E (Eds). *Advances in Comparative and Environmental Physiology*. Berlin, Heidelberg: Springer. p. 51–77. DOI: <https://doi.org/10.1007/978-3-642-78598-6>
- Potier S, Mitkus M, Bonadonna F, Duriez O, Isard PF, Dulaurent T, Mentek M, Kelber A.** 2017. Eye size, Fovea, and foraging ecology in accipitriform raptors. *Brain, Behavior and Evolution* **90**:232–242. DOI: <https://doi.org/10.1159/000479783>, PMID: 29020667
- Querubin A, Lee HR, Provis JM, O'Brien KM.** 2009. Photoreceptor and ganglion cell topographies correlate with information convergence and high acuity regions in the adult pigeon (*Columba livia*) retina. *The Journal of Comparative Neurology* **517**:711–722. DOI: <https://doi.org/10.1002/cne.22178>, PMID: 19827162
- Rabosky DL, Chang J, Title PO, Cowman PF, Sallan L, Friedman M, Kaschner K, Garilao C, Near TJ, Coll M, Alfaro ME.** 2018. An inverse latitudinal gradient in speciation rate for marine fishes. *Nature* **559**:392–395. DOI: <https://doi.org/10.1038/s41586-018-0273-1>, PMID: 29973726
- Randall DJ, Rummer JL, Wilson JM, Wang S, Brauner CJ.** 2014. A unique mode of tissue oxygenation and the adaptive radiation of teleost fishes. *Journal of Experimental Biology* **217**:1205–1214. DOI: <https://doi.org/10.1242/jeb.093526>, PMID: 24744420
- Randall DJ, Cameron JN.** 1973. Respiratory control of arterial pH as temperature changes in rainbow trout *Salmo gairdneri*. *American Journal of Physiology-Legacy Content* **225**:997–1002. DOI: <https://doi.org/10.1152/ajplegacy.1973.225.4.997>
- Revell LJ.** 2012. Phytools: an R package for phylogenetic comparative biology (and other things). *Methods in Ecology and Evolution* **3**:217–223. DOI: <https://doi.org/10.1111/j.2041-210X.2011.00169.x>
- Rodieck RW.** 1998. *The First Steps in Seeing*. Sunderland, Massachusetts: Sinauer Associates.
- Root RW.** 1931. The respiratory function of the blood of marine fishes. *The Biological Bulletin* **61**:427–456. DOI: <https://doi.org/10.2307/1536959>
- Rummer JL, McKenzie DJ, Innocenti A, Supuran CT, Brauner CJ.** 2013. Root effect hemoglobin may have evolved to enhance general tissue oxygen delivery. *Science* **340**:1327–1329. DOI: <https://doi.org/10.1126/science.1233692>, PMID: 23766325
- Scozzafava A, Briganti F, Ilies MA, Supuran CT.** 2000. Carbonic anhydrase inhibitors: synthesis of membrane-impermeant low molecular weight sulfonamides possessing in vivo selectivity for the membrane-bound versus cytosolic isozymes. *Journal of Medicinal Chemistry* **43**:292–300. DOI: <https://doi.org/10.1021/jm990479+>, PMID: 10649985
- Soivio A, Nyholm K, Westman K.** 1975. A technique for repeated sampling of the blood of individual resting fish. *The Journal of Experimental Biology* **63**:207–217. PMID: 1159362
- Steen JB.** 1963a. The physiology of the swimbladder in THE eel *Anguilla vulgaris*. iii. the mechanism of gas secretion. *Acta Physiologica Scandinavica* **59**:221–241. DOI: <https://doi.org/10.1111/j.1748-1716.1963.tb02738.x>, PMID: 14078660
- Steen JB.** 1963b. The physiology of the swimbladder of the eel, *Anguilla vulgaris*. I. the solubility of gases and the buffer capacity of the blood. *Acta Physiologica Scandinavica* **58**:124–137. DOI: <https://doi.org/10.1111/j.1748-1716.1963.tb02635.x>, PMID: 13983576
- Supuran CT.** 2008. Carbonic anhydrases: novel therapeutic applications for inhibitors and activators. *Nature Reviews Drug Discovery* **7**:168–181. DOI: <https://doi.org/10.1038/nrd2467>, PMID: 18167490
- Tresguerres M.** 2016. Novel and potential physiological roles of vacuolar-type H^+ -ATPase in marine organisms. *The Journal of Experimental Biology* **219**:2088–2097. DOI: <https://doi.org/10.1242/jeb.128389>, PMID: 27445397
- Walls GL.** 1942. *The Vertebrate Eye and Its Adaptive Radiation*. Bloomfield Hills, MI: The Cranbrook Institute of Science.
- Waser WP, Heisler N.** 2004. Oxygen delivery to the fish eye: blood flow in the pseudobranchial artery of rainbow trout (*Oncorhynchus mykiss*). *Fish Physiology and Biochemistry* **30**:77–85. DOI: <https://doi.org/10.1007/s10695-005-0268-3>
- Waser W, Heisler N.** 2005. Oxygen delivery to the fish eye: root effect as crucial factor for elevated retinal PO_2 . *Journal of Experimental Biology* **208**:4035–4047. DOI: <https://doi.org/10.1242/jeb.01874>, PMID: 16244163
- Weber RE, Fago A.** 2004. Functional adaptation and its molecular basis in vertebrate hemoglobins, neuroglobins and cytoglobins. *Respiratory Physiology & Neurobiology* **144**:141–159. DOI: <https://doi.org/10.1016/j.resp.2004.04.018>, PMID: 15556098
- Weber RE, Lykkeboe G.** 1978. Respiratory adaptations in carp blood influences of hypoxia, red cell organic phosphates, divalent cations and CO_2 on hemoglobin-oxygen affinity. *Journal of Comparative Physiology ? B* **128**:127–137. DOI: <https://doi.org/10.1007/BF00689476>
- Wittenberg JB, Wittenberg BA.** 1962. Active secretion of oxygen into the eye of fish. *Nature* **194**:106–107. DOI: <https://doi.org/10.1038/194106a0>, PMID: 14007771
- Wood SC, Johansen K.** 1972. Adaptation to hypoxia by increased HbO₂ affinity and decreased red cell ATP concentration. *Nature New Biology* **237**:278–279. DOI: <https://doi.org/10.1038/newbio237278a0>, PMID: 4504466
- Yu CQ, Schwab IR, Dubielzig RR.** 2009. Feeding the vertebrate retina from the cambrian to the tertiary. *Journal of Zoology* **278**:259–269. DOI: <https://doi.org/10.1111/j.1469-7998.2009.00580.x>

Yu DY, Cringle SJ. 2001. Oxygen distribution and consumption within the retina in Vascularised and avascular retinas and in animal models of retinal disease. *Progress in Retinal and Eye Research* **20**:175–208. DOI: [https://doi.org/10.1016/s1350-9462\(00\)00027-6](https://doi.org/10.1016/s1350-9462(00)00027-6), PMID: 11173251