

UCLA

UCLA Previously Published Works

Title

The Lipid Energy Model: Reimagining Lipoprotein Function in the Context of Carbohydrate-Restricted Diets

Permalink

<https://escholarship.org/uc/item/2gm171ng>

Journal

Metabolites, 12(5)

ISSN

2218-1989

Authors

Norwitz, Nicholas G

Soto-Mota, Adrian

Kaplan, Bob

et al.

Publication Date

2022

DOI

10.3390/metabo12050460

Copyright Information

This work is made available under the terms of a Creative Commons Attribution License, available at <https://creativecommons.org/licenses/by/4.0/>

Peer reviewed

Hypothesis

The Lipid Energy Model: Reimagining Lipoprotein Function in the Context of Carbohydrate-Restricted Diets

Nicholas G. Norwitz ^{1,*}, Adrian Soto-Mota ², Bob Kaplan ³, David S. Ludwig ^{1,4}, Matthew Budoff ⁵, Anatol Kontush ^{6,†} and David Feldman ^{3,*}

¹ Harvard Medical School, Boston, MA 02115, USA; david.ludwig@childrens.harvard.edu

² Metabolic Diseases Research Unit, National Institute for Medical Sciences and Nutrition Salvador Zubiran, Tlalpan, CDMX 14080, Mexico; adrian.sotom@incmnsz.mx

³ Citizen Science Foundation, Las Vegas, NV 89139, USA; bobotron@gmail.com

⁴ New Balance Foundation Obesity Prevention Center, Boston Children's Hospital, Boston, MA 02115, USA

⁵ Lundquist Institute at Harbor-UCLA Medical Center, Torrance, CA 90502, USA; mbudoff@lundquist.org

⁶ National Institute for Health and Medical Research (INSERM), UMRS 1166 ICAN, Faculty of Medicine Pitié-Salpêtrière, Sorbonne University, 75013 Paris, France; anatol.kontush@upmc.fr

* Correspondence: nicholas_norwitz@hms.harvard.edu (N.G.N.); dave@citizensciencefoundation.org (D.F.)

† These authors contributed equally to this work.

Abstract: When lean people adopt carbohydrate-restricted diets (CRDs), they may develop a lipid profile consisting of elevated LDL-cholesterol (LDL-C) and HDL-cholesterol (HDL-C) with low triglycerides (TGs). The magnitude of this lipid profile correlates with BMI such that those with lower BMI exhibit larger increases in both LDL-C and HDL-C. The inverse association between BMI and LDL-C and HDL-C change on CRD contributed to the discovery of a subset of individuals—termed Lean Mass Hyper-Responders (LMHR)—who, despite normal pre-diet LDL-C, as compared to non-LMHR (mean levels of 148 and 145 mg/dL, respectively), exhibited a pronounced hyperlipidemic response to a CRD, with mean LDL-C and HDL-C levels increasing to 320 and 99 mg/dL, respectively, in the context of mean TG of 47 mg/dL. In some LMHR, LDL-C levels may be in excess of 500 mg/dL, again, with relatively normal pre-diet LDL-C and absent of genetic findings indicative of familial hypercholesterolemia in those who have been tested. The Lipid Energy Model (LEM) attempts to explain this metabolic phenomenon by positing that, with carbohydrate restriction in lean persons, the increased dependence on fat as a metabolic substrate drives increased hepatic secretion and peripheral uptake of TG contained within very low-density lipoproteins (VLDL) by lipoprotein lipase, resulting in marked elevations of LDL-C and HDL-C, and low TG. Herein, we review the core features of the LEM. We review several existing lines of evidence supporting the model and suggest ways to test the model's predictions.

Keywords: carbohydrate restriction; lean mass hyper-responder; LDL-cholesterol; lipoprotein lipase; HDL-cholesterol; triglyceride-rich lipoproteins; VLDL-cholesterol



Citation: Norwitz, N.G.; Soto-Mota, A.; Kaplan, B.; Ludwig, D.S.; Budoff, M.; Kontush, A.; Feldman, D. The Lipid Energy Model: Reimagining Lipoprotein Function in the Context of Carbohydrate-Restricted Diets. *Metabolites* **2022**, *12*, 460. <https://doi.org/10.3390/metabo12050460>

Academic Editor: Phil Whitfield

Received: 19 April 2022

Accepted: 4 May 2022

Published: 20 May 2022

Publisher's Note: MDPI stays neutral with regard to jurisdictional claims in published maps and institutional affiliations.



Copyright: © 2022 by the authors. Licensee MDPI, Basel, Switzerland. This article is an open access article distributed under the terms and conditions of the Creative Commons Attribution (CC BY) license (<https://creativecommons.org/licenses/by/4.0/>).

1. Introduction

Carbohydrate-restricted diets (CRDs) hold promise for weight loss, and treatment of type 2 diabetes and other chronic health conditions [1]. However, this dietary strategy may cause elevated LDL-cholesterol (LDL-C), an important risk factor for atherosclerotic cardiovascular disease (ASCVD). Some studies report marked increases in LDL-C with consumption of a CRD [2–7]. However, others show no clinically meaningful increases [8–15]. Given the rise in popularity of CRD [16], as well as the persistent mortality burden of ASCVD [17], it is important to clarify the mechanistic understanding of the LDL-C elevation, and other alterations in lipid metabolism, in response to carbohydrate restriction.

We recently reported data on a cohort of 548 individuals consuming a CRD, defined as <130 g/day (mean intake of 27 g/day). A hypothesis-naïve exploratory analysis identified body mass index (BMI) and the metabolic health markers, HDL-cholesterol (HDL-C) and triglycerides (TG), pre-CRD, as strong predictors of LDL-C increase. Specifically, BMI and TG-to-HDL-C ratio (TG/HDL-C) were each inversely associated with LDL-C change [18]. Otherwise stated, lean persons with low TG/HDL-C ratio (opposite to that characteristic of atherogenic dyslipidemia) were most likely to experience LDL-C increases with consumption of a CRD. We further characterized a subset of 100 “Lean Mass Hyper-Responders” (LMHR) who were leaner than non-LMHR participants and exhibited exceptional increases in LDL-C and HDL-C upon a CRD in the context of low TG (to mean levels of 320 mg/dL LDL-C, 99 mg/dL HDL-C, and 47 mg/dL TG on a CRD), despite no difference in pre-CRD LDL-C levels, as compared to non-LMHR. In those patients who have been tested, there were no notable genetic findings and the LMHR phenotype was reversible with reintroduction of carbohydrates [7,18].

The aim of this narrative review is to propose a mechanistic explanation for the LMHR phenotype, comprising the Lipid Energy Model (LEM), to inform prospective research. We first describe the core features of the model, with emphasis on the importance of lipoprotein lipase (LPL)-mediated lipolysis of triglyceride-rich lipoprotein (TGRL), including very low-density lipoprotein (VLDL). We consider several lines of evidence supporting the model and then propose future studies that could rigorously test the LEM. The research into this model may have important implications for the understanding of human lipid metabolism and cardiovascular disease.

2. Core Concept of the Lipid Energy Model

2.1. Lipid Energy Model Overview

The central concept of the LEM is that, under conditions of carbohydrate-restriction and relatively low total adiposity, there is a greater reliance on fat as a metabolic substrate, as supplied by TGRL, including VLDL synthesized and secreted by the liver. Under these conditions, increased hepatic VLDL secretion is complemented by increased peripheral VLDL-TG lipolysis (which we will refer to as “VLDL turnover”), mediated by LPL, which results in the observed triad of high LDL-C, high HDL-C, and low TG.

The proposed sequence of events is shown in Figure 1A:

1. Reduction in dietary carbohydrates and depletion of hepatic glycogen stores results in a greater demand for fat as a metabolic fuel, to compensate for reduced glucose availability.
2. Decreased insulin, leptin, and other changes to the hormonal milieu, result in increased hormone-sensitive lipase (HSL)-mediated lipolysis in adipocytes and greater secretion of non-esterified fatty acids (NEFAs) into the bloodstream.
3. In addition to heightened use by tissues in the periphery, there is a greater rate of uptake of NEFAs by the liver. Under these conditions, there is a greater rate of synthesis of TGs from the increased fatty acid pool within hepatocytes.
4. Increased rates of TG synthesis in the liver leads to increased rates of hepatic assembly and secretion of TG-rich VLDL.
5. The increased VLDL secretion rates, in concert with greater LPL-mediated turnover of VLDL in peripheral tissues, and greater transfer of VLDL surface components (including free cholesterol) to HDL, result in higher plasma levels of LDL-C and HDL-C.

An important prediction of the model is that the magnitude of change in triad components is positively associated with reliance on energy supplied by VLDL-TG. Thus, as shown in Figure 1B, (i) greater restriction of carbohydrate, (ii) lower relative adiposity, and (iii) increased total energy expenditure (related to lean mass, physical activity level, and other factors) comprise independent variables that can be manipulated to test the model, as considered below. First, we will review the foundational literature upon which the LEM is based.

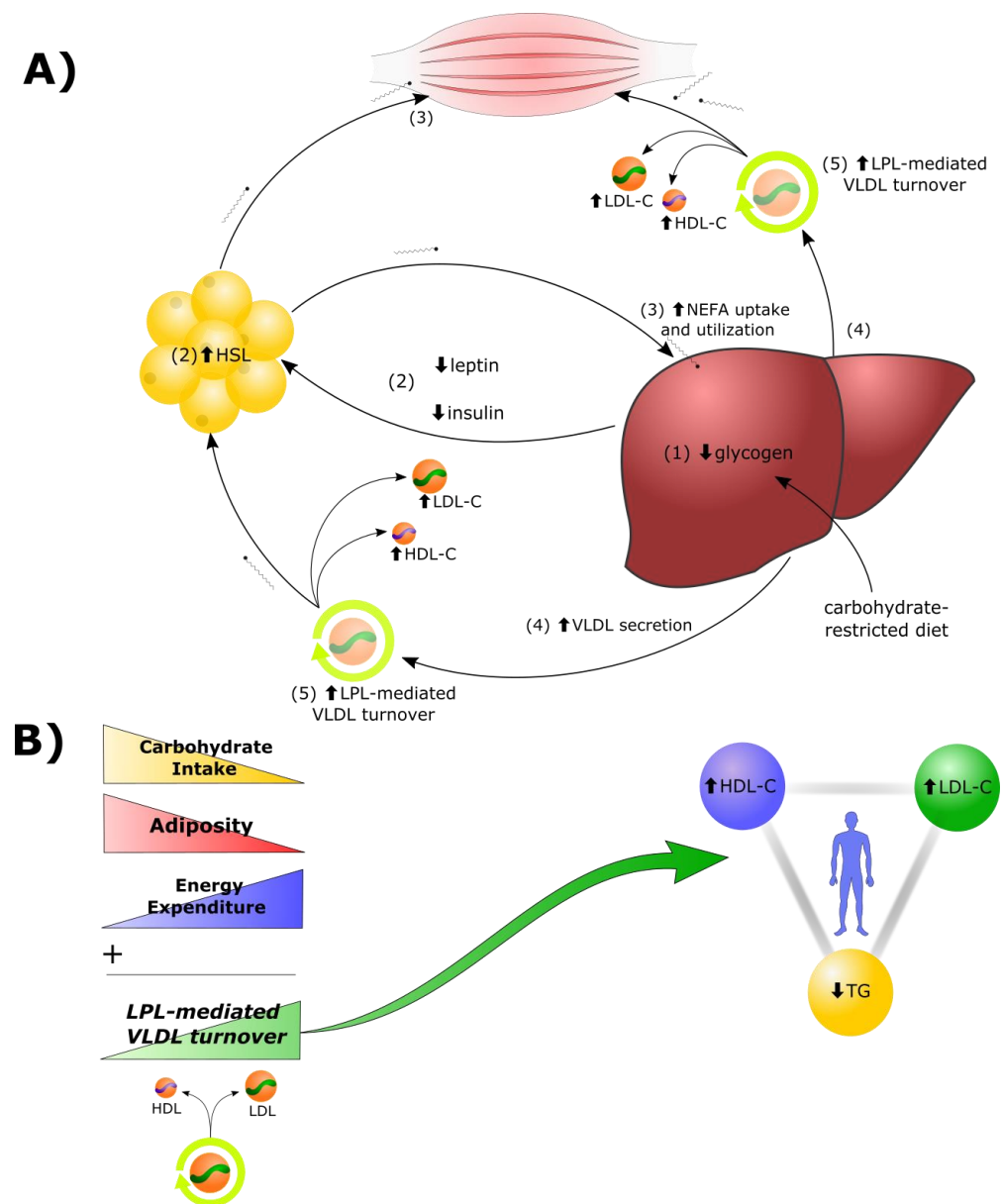


Figure 1. *The Lipid Energy Model.* (A) In the context of carbohydrate restriction, (1) glycogen depletion and (2) changes in circulating hormones stimulate hormone-sensitive lipase (HSL)-mediated secretion of non-esterified fatty acids (NEFA) by adipocytes to fuel oxidative tissues. (3) The liver captures circulating NEFAs and repackages them into triglycerides (TG), (4) secreted aboard VLDL. (5) Increased lipoprotein-lipase (LPL)-mediated VLDL turnover generates increased LDL-C and HDL-C. (Further details can be found in the main text.) The role of chylomicrons in the post-prandial state is presented later in the text. (B) The magnitude of carbohydrate restriction, adiposity, and energy expenditure each contribute, as independent variables, to the degree of LPL-mediated VLDL turnover and, thereby, to the magnitude of change of the triad components.

2.2. LPL Mediates the Exchange between TGRL Donors and HDL Acceptors

Above, we introduced the idea that LPL-mediated VLDL turnover contributes to increases in LDL-C and HDL-C. This statement deserves some unpacking. The enzyme LPL is synthesized by peripheral tissues and anchored to endothelial cells in the capillary lumen. From there, LPL catalyzes the rate-limiting-step for the removal of TGs from TGRL, including chylomicrons in the post-prandial phase and VLDL in the fasted state. Focusing first on VLDL metabolism, LPL liberates NEFAs from TG contained within the core of VLDL to supply local tissues with substrate for storage (e.g., adipocytes) or oxidation

(e.g., skeletal and cardiac muscle). Depletion of the core TG cargo of VLDL requires a complementary remodeling and shrinking of the surface area of the lipoprotein. VLDL surface components—including apolipoproteins, free cholesterol, and phospholipids—are thus transferred to HDL, resulting in increased HDL-C and LDL-C, as well as elevated total HDL and LDL particle mass (Figure 2).

Studies in vitro have demonstrated that LPL activity and resultant VLDL catabolic rate are positively correlated with HDL-C [19]. Moreover, smaller lipid-poor HDLs act as preferential “acceptors” that develop into larger cholesterol-rich HDLs due to LPL-mediated VLDL-TG lipolysis [20,21]. This view is consistent with the observations that fat feeding in humans shifts HDL particle distribution towards larger cholesterol-rich HDLs [22,23] and that insulin resistance and plasma TGs are inversely associated with large cholesterol-rich HDLs [24].

Thus, LPL-mediated VLDL turnover is a process in which TG fuel is drained from VLDLs and, as the VLDL ‘shrinks’ into an LDL, the shed surface components are picked up preferentially by small lipid-poor HDLs. Stated concisely, the LEM emphasizes the donor–acceptor relationship between apoB-containing VLDL and apoA-I-containing HDL, a relationship that is relatively well-accepted in the literature [25]. However, this relationship is further expanded in the LMHR phenotype by the proposed increased rates of VLDL secretion (necessarily resulting in elevated LDL and LDL-C) and by the effect of low-carbohydrate, high-fat feeding on HDL dynamics, a topic to which we will now turn.

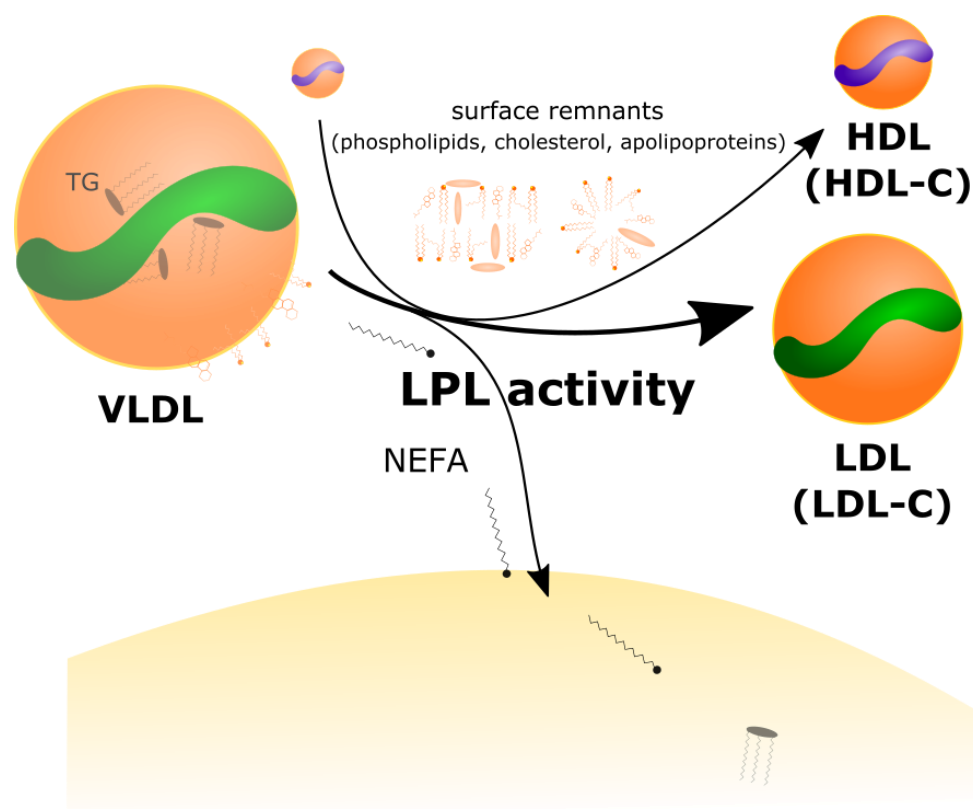


Figure 2. Lipoprotein lipase-mediated increase in LDL-C and HDL-C. In the presence of increased VLDL synthesis and secretion, lipoprotein lipase (LPL) activity liberates non-esterified fatty acids (NEFAs) for adipocytes and oxidative tissues. As TGs are lipolyzed, VLDLs shrink with loss of surface remnants (including cholesterol, phospholipids, and apolipoproteins) to HDL acceptor particles, and subsequent catabolism to LDL, resulting in increases in LDL particle mass, LDL-C, HDL particle mass and HDL-C.

3. The Role of HDL Particles in Lipid Energy Metabolism

3.1. High HDL Is Both a Cause and Consequence of Efficient TGRL Metabolism

In the previous section, we introduced the idea that small lipid-poor HDLs are good acceptors for LPL-mediated release of surface components from TGRLs, including chylomicrons and VLDL. Therefore, one might expect that high-fat feeding would not only contribute to a shift in the HDL particle distribution to larger particles following LPL-mediated TGRL turnover [22,23], but also upregulate the production of new small HDLs to refresh the pool of acceptor particles and in anticipation of increased LPL-mediated release of TGRL surface remnants.

In addition to direct hepatic apoA-I/HDL production, the intestine can produce small nascent HDL particles *de novo* [26–28]. Furthermore, chylomicrons, formed as the inevitable result of fat-feeding, provide a supply of apoA-I that can contribute to the formation of HDL particles following LPL-mediated VLDL turnover. Chylomicrons share a similar apolipoprotein profile with HDL, including apoA-I, a sizeable minority (up to 30–40%) of which is synthesized by the intestines prior to being trafficked in chylomicrons to systemic circulation [27,29]. Once in the bloodstream, LPL-mediated catabolism of chylomicrons transfers apoA-I preferentially to small lipid-poor protein-rich HDL. Given that apoA-I functions as an excellent biological detergent, this transfer of apoA-I can be thought of as conferring the propensity to “accept” TGRL surface components [25,30]. Small “acceptor” HDL particles can also be assembled *de novo* from apoA-I and other surface components released during LPL-mediated chylomicron lipolysis [31].

In summary, low-carbohydrate, high-fat feeding can promote intestinal secretion of apoA-I-containing particles (small nascent HDLs and chylomicrons), an adaptive response that can facilitate efficient LPL-mediated lipolysis of TGRL. In turn, elevated LPL-mediated TGRL turnover results in elevated circulating levels of larger HDLs and the subsequent efficient return of the cholesterol fraction [32] to the liver. In this way, HDL engages in a cycle that serves to couple digestion to energy demands: it accepts surface components upon TGRL lipolysis and returns cholesterol to the liver for bile acid synthesis to facilitate future fat digestion (Figure 3A). As is proposed by the co-author AK in the Reverse Remnant-Cholesterol Transport (RRT) theory, “high plasma HDL concentrations can therefore be a result and cause of efficient [LPL-mediated] clearance of TGRL” [25].

3.2. Cholesteryl Ester Transfer Protein (CETP) in Atherogenic Dyslipidemia and LMHR

In the previous subsection, we explained how high HDL could be both a cause and consequence of efficient TGRL metabolism. To better understand how the converse could also be true as part of the LEM framework—that low HDL could be a cause and consequence of inefficient TGRL metabolism—it is instructive to consider the role of cholesteryl ester transfer proteins (CETPs). CETPs facilitate the exchange of core lipids, cholesteryl ester (CEs) for TGs, between lipoproteins [33]. Specifically, CETP is primarily bound to HDL [34] and facilitates the transfer of CE from apoA-I-containing HDL to TGRL and LDL, in exchange for TG from these apoB-containing particles. After receiving CE from HDL, these apoB-containing particles can traffic it to the liver or intestine in a pathway referred to as indirect reverse cholesterol transport [35,36].

However, given that CETP activity promotes the equimolar exchange of TG and CE, it is also appropriate to think about CETP from a TG-first framework, in line with the LEM. Indeed, CETP activity is largely driven by the availability of TGRL. Simply stated, higher levels of TG in apoB-containing particles drives increased CETP activity by increasing availability of TG substrate [37]. Conversely, in the context of low levels of TG in apoB-containing particles, there is little demand and little driving force for CETP activity.

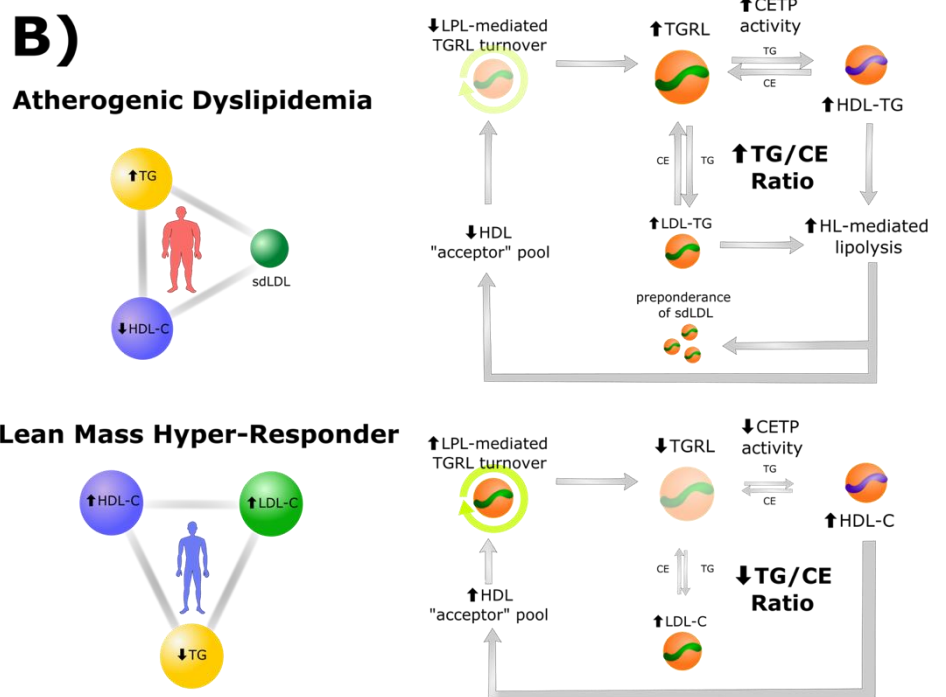
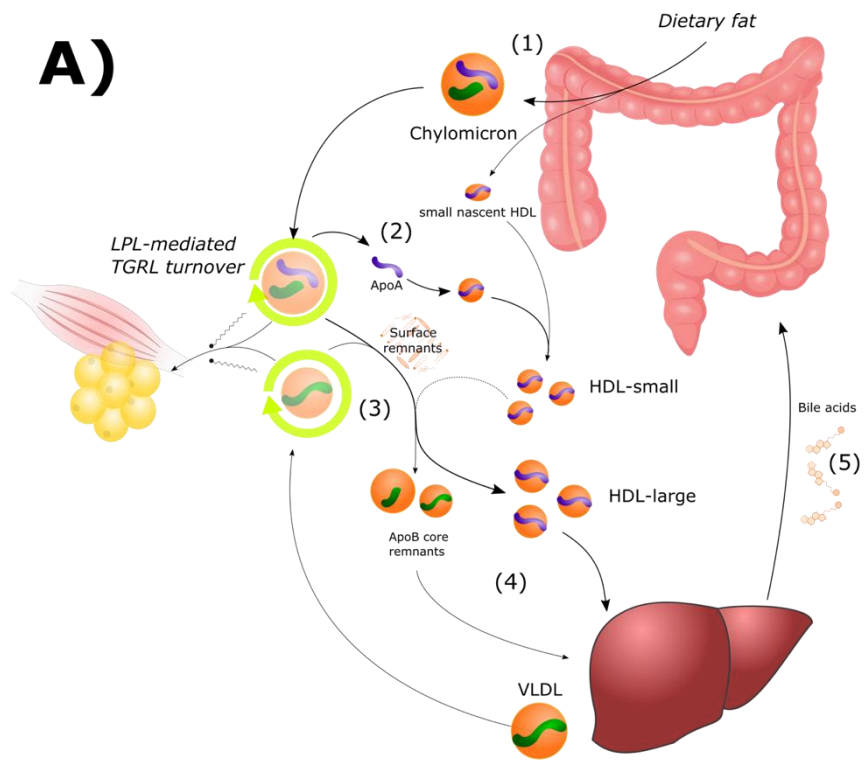


Figure 3. High HDL is a result and cause of efficient lipoprotein lipase-mediated triglyceride-rich lipoprotein metabolism, and vice versa. (A) (1) Ingestion of dietary fat contributes to production of small nascent HDL particles and apoA-I-containing chylomicrons. (2) Lipoprotein lipase (LPL)-mediated catabolism of chylomicrons yields lipid-free/lipid-poor apoA-I to further contribute to the pool of small HDL “acceptor” particles. (3) As LPL-mediated catabolism of triglyceride-rich lipoproteins (TGRLs, including chylomicrons and VLDLs) occurs, TGRLs release surface remnants. Surface remnants, bilayer structures including cholesterol, phospholipids, and apolipoproteins, are predominantly taken up by small acceptor HDL particles. (4) Through this process, lipoproteins, originating as TGRLs, remodel

to intermediate-density lipoprotein (IDL) and finally to LDL and smaller chylomicrons and are returned to the liver. Large cholesterol-rich HDL (produced largely as a function of efficient LPL-mediated TGRL turnover) returns cholesterol to the liver, (5) to be used in various ways, such as the synthesis of bile acids. **(B)** The contrapositive is that low plasma HDL concentrations can be a result and cause of inefficient LPL-mediated TGRL turnover, a phenomenon that can be used to mechanistically contrast atherogenic dyslipidemia and the Lean Mass Hyper-Responder (LMHR) phenotype and involves cholesteryl ester transfer protein (CETP). In atherogenic dyslipidemia, insufficient turnover yields elevated TGRLs, driving CETP-mediated transfer of TGs to HDL and LDL particles (by heterotypic and homotypic exchange, respectively). This increases hepatic lipase (HL)-mediated lipolysis with ensuing depletion of HDL and production of small dense LDL (sdLDL). Decreases in the HDL acceptor pool perpetuates the cycle. This is in contrast to the elevated LPL-mediated TGRL turnover proposed in LMHR, in which low TGRL leads to a low TG/CE ratio in lipoproteins and low CETP activity, resulting in cholesterol-rich HDL (and low levels of HL-mediated lipolysis) and elevated HDL-C and LDL-C.

Conceptualizing of CETP in this way helps explain the profile of individuals with atherogenic dyslipidemia, typified by high serum TG, low HDL-C, and a preponderance of small dense LDL particles (sdLDLs). In atherogenic dyslipidemia, insufficient VLDL turnover relative to secretion (likely in part due to ApoCIII-mediated inhibition of LPL [38,39]) causes TGRL levels to rise and increases TGRL-TG, in favor of increased CETP activity. As a result, there are higher levels of CETP-mediated exchange [40–44], and HDL particles become relatively TG-rich and CE-poor (high TG/CE ratio), corresponding to reduced HDL-C levels. TG-rich HDLs are also prone to hepatic lipase-mediated lipolysis [45] (activity of hepatic lipase is also elevated in atherogenic dyslipidemia [46,47]) and ultimately accelerated HDL clearance by the liver and kidneys, further depleting HDL [45,48–52]. In brief, inefficient LPL-mediated VLDL turnover and increased VLDL levels, marked by elevated serum TG, drive higher rates of CETP-mediated transfer of TG to HDL, and consequently depletion of HDL-C and accelerated HDL catabolism.

The third characteristic of atherogenic dyslipidemia (in addition to elevated TG and diminished HDL-C) is a preponderance of sdLDLs, which can also be framed by our discussion of CETP. While HDL particles serve as the preferential CE donor (TG acceptor) for CETP-mediated exchange [53,54], TGRLs and their remnants that are elevated in atherogenic dyslipidemia also undergo CETP-mediated exchange in which they are the CE acceptor (TG donor) with other apoB particles, including LDL (this is “homotypic exchange,” as opposed to “heterotypic exchange” between apoA-I- and apoB-containing particles), resulting in TG-enriched LDL [35,55]. TG-enriched LDLs are, likewise, prone to hepatic lipase-mediated lipolysis, as with TG-rich HDL [56,57], resulting in sdLDL particles and the pattern B phenotype [58–60]. Moreover, transfer of CE to TGRL remnants, resulting from homotypic exchange generates particles that will eventually become LDL particles and in turn accept TG from, and donate CE to, another TGRL remnant, repeating the cycle.

In summary, the extent of decreased LPL-mediated TGRL turnover rate and increased levels of TG substrate in apo-B-containing particles can drive enhanced CETP-mediated transfer of TG from TGRL to HDL and LDL, leading to depletion of HDL, as well as a preponderance of sdLDL, that defines atherogenic dyslipidemia.

How would the scenario differ in LMHR? According to the LEM, the LMHR phenotype is characterized by a rapid rate of LPL-mediated TGRL turnover, exhibited by the presence of low plasma TG. Efficient turnover results in rapid shrinking of VLDL into CE-rich TG-poor LDL, and its shed surface components, including phospholipids and free cholesterol, that are acquired by HDL. HDL thus becomes enriched in cholesterol and CE, and HDL-C levels rise. Otherwise stated, efficient LPL-mediated TGRL turnover results in a diminution of TG and augmentation of CE in circulating Apo-A-I- and ApoB-containing lipoproteins (a low TG/CE ratio). This in turn results in low CETP activity and a greater proportion of larger CE-rich LDL and HDL and higher LDL-C and HDL-C.

Putting the pieces of the puzzle together (Figure 3B), the LEM predicts that elevated CETP-mediated exchange, observed in people with atherogenic dyslipidemia, is not a cause,

but a consequence, of inefficient LPL-mediated TGRL turnover. Elevated CETP-mediated exchange may then contribute to a vicious cycle of inefficient TGRL turnover, in part due to HDL deficiency. Borrowing from the Reverse Remnant-Cholesterol Transport (RRT) model in the contrapositive: low plasma HDL concentrations can therefore be a result and cause of inefficient [LPL-mediated] clearance of TGRL.

4. Adiposity and Lean Mass Influence Lipid Energy Dynamics

Having discussed some of the core features of the LEM, including the critical roles of LPL and HDL in VLDL-mediated turnover, we now turn to the question, “Why does the high LDL-C, high HDL-C, low TG lipid triad appear primarily in persons who are lean and/or athletic?” More specifically, what are the roles of adiposity and lean mass in lipid energy dynamics?

4.1. Obesity Impairs the Shift from Glucose to Fat Metabolism

Given the relative paucity of data directly comparing people who are lean versus those with obesity on CRD, we will first draw from such comparative data in fasted subjects. Fasting provides a hormonal and metabolic state with parallels to a CRD, including reduced basal insulin level, depleted hepatic glycogen stores, and increased reliance on fat, relative to carbohydrate, for energy requirements.

As early as 1977, Goschke observed that a six-day fast increased plasma NEFAs and ketones to a greater extent in subjects who are lean versus those with obesity. Plasma NEFAs and ketones in the lean participants were 22% and 30% higher, respectively, as compared to levels in those with obesity after six days of fasting [61], a particularly notable finding considering that plasma NEFAs tend to be higher among subjects with obesity at baseline or on a diet including carbohydrates. Similar results were produced more recently by Bak et al. in 2018, who showed that plasma NEFAs, glycerol (a gluconeogenic substrate), and ketones increased to a greater extent after a 72-h fast in subjects who were lean versus in those with obesity [62]. Furthermore, Wijngaarden et al. demonstrated that the shift from glucose to lipid oxidation is attenuated by obesity during a fast. In this study, over a 48-h fast, there was a 214% increase in lipid oxidation in lean subjects, as measured by indirect calorimetry, as compared to a 76% increase in those with obesity, with an accompanying decrease in resting energy expenditure observed in those with obesity only [63]. These studies each support the notion that metabolic flexibility and the shift towards a fat-based metabolism is impaired by obesity.

4.2. Lean Body Mass and Adiposity Impact VLDL Secretion, Clearance, and Turnover

Whereas these fasting studies demonstrate leanness is associated with a greater upregulation of lipid oxidation, they do not examine VLDL dynamics directly. What determines VLDL secretion, clearance, and turnover rates? One telling human radiotracer study performed by Sondergaard et al. observed that lean body mass (LBM) was the strongest positive predictor of VLDL secretion [64]. As LBM is tightly correlated with metabolic rate, the authors interpreted these data as indicating that “VLDL-TG secretion is regulated by oxidative needs [derived from circulating TGRL].” Additionally, they observed that VLDL clearance rate was inversely related to total fat mass and insulin. Applied to the situation of lean, athletic persons with high energy demands on CRD, these tracer data predict elevated secretion rates of VLDL-TG to meet oxidative demand, along with rapid VLDL clearance and turnover rates, consistent with the LEM.

Complementary evidence that adiposity impairs LPL-mediated VLDL turnover rates comes from the examination of reciprocal changes in VLDL and HDL surface lipids in response to cold exposure. Cold stimulates thermogenic brown and beige adipocytes to generate heat, energy from which can be provided by circulating VLDLs. In an elegant series of experiments in mice, Bartelt and colleagues [65] were able to demonstrate that LPL-mediated lipolysis of VLDL was critical to support heat production by thermogenic adipocytes and that this resulted in a reciprocal change of surface components across

VLDL and HDL species. Importantly, when human subjects who were lean or obese were exposed to cold, changes in the HDL lipidome were only observed in the former. These data are consistent with the notion that, when persons with varying levels of adiposity are subjected to similar environmental circumstances that should induce LPL activity to meet energetic demands, the response is attenuated in those with obesity and accentuated in lean individuals.

4.3. Is There a “Threshold Effect” of Carbohydrate Intake on LDL-C Levels?

To summarize, the above human clinical data support the notions that excess adiposity impairs the shift to a fat-centric energy metabolism, in the context of carbohydrate restriction, and that increased oxidative demands can drive increases in VLDL secretion of TGRL. However, thus far, our explanation of the LEM would appear to imply a direct linear, or semi-linear, relationship between relative energy needs derived from fat, as compared to carbohydrate, and LDL-C levels. This is unlikely to be the case. Clinical anecdotes and case series suggest that the relationship between dietary carbohydrate intake as a percentage of energy needs and LDL-C levels may exhibit more of a “threshold” effect. For example, in a case series of five patients [18] on very low-carbohydrate diets (<25g/day), who tested negative for familial hypercholesterolemia, reintroduction of 50–100 g/day of carbohydrates decreased LDL-C levels between 30 and 72% of initial levels (mean decrease of 210 mg/dL from 428 mg/dL to 218 mg/dL), even though all individuals continued to consume a low carbohydrate diet of <130 g/day.

There are several possible explanations for this carbohydrate threshold effect. First, there may be a point at which LDL uptake by hepatic LDL receptors at the liver becomes rate limiting. As LPL-mediated VLDL turnover rates and subsequent LDL formation increase above the point matched by removal by LDL receptors, LDL particle number and LDL-C levels would rise until production and removal kinetics reach a new steady state, asymptotically approaching LDL-receptor saturation.

A second intriguing possibility is that depletion of hepatic glycogen stores could serve as a trigger for increased rates of VLDL secretion and peripheral LPL-mediated VLDL lipolysis. We propose that the co-occurrence of low insulin and low hepatic glycogen (Figure 1A) is necessary to induce increased rates of lipolysis in adipocytes, increased circulating NEFAs, and subsequent increased rate of hepatic uptake of NEFAs, secretion of VLDLs, and LPL-mediated VLDL turnover, thus increasing the pool of resulting LDL particles.

The idea that depletion of hepatic glycogen may underlie a potential threshold effect is supported by rodent experiments in which a decline in the rate of glycogenolysis triggered hypoleptinemia, that was necessary, in addition to low insulin, to increase adipocyte lipolysis, circulating NEFAs, and NEFA uptake by hepatocytes [66]. In this seminal study, either prolonged fasting or blocking glycogenolysis was sufficient to induce hypoleptinemia. Furthermore, infusion of exogenous leptin to physiological levels was sufficient to reduce many of the observed physiological changes induced by fasting, including attenuating increases in plasma NEFAs, glycerol, ketones, and FGF21 (more on FGF21 in a subsequent section). Furthermore, investigation of the human fasting metabolome in persons without obesity confirm hypoleptinemia occurs in the early phases of fasting and that plasma leptin is inversely correlated with NEFA [67].

However, while some hormonal responses to fasting or carbohydrate restriction may be generalizable between species, humans may have adapted to longer periods of fasting and more prolonged dependency on fat as a primary fuel compared to rodents. Indeed, in hyperleptinemic rodents, increased NEFA uptake by hepatocytes is associated with hepatic steatosis and depletion of apoB-100 [66,68]. However, hepatic steatosis is not commonly reported in humans on CRD and has been shown to be beneficial for non-alcoholic fatty liver disease (NAFLD) [69]. It is therefore feasible that humans, who evolved to transition between carbohydrate and fat-based metabolic states, are evolutionarily equipped to export NEFAs taken up by hepatocytes in the form of VLDLs.

In conclusion, the possibility that combined low insulin and low leptin, secondary to hepatic glycogen depletion, are necessary to trigger increased NEFA secretion and uptake by hepatocytes is attractive in the context of the LEM because this would help explain: (i) the potential “threshold” effect (depletion of glycogen triggers hypoleptinemia) and also (ii) why the metabolic phenotype associated with the model presents preferentially in lean persons (leptin is elevated in obesity). Admittedly, the purported presence of a threshold-like relationship between carbohydrate restriction and LDL change remains to be confirmed; and, even if it exists, empirically demonstrating these mechanisms will be a major challenge for the LEM.

5. Lipoprotein Lipase Regulators

We now turn to discussing key LPL regulators, including the apolipoprotein apoC-III, angiopoietin-like (ANGPTL) family of proteins, and FGF21.

5.1. ApoC-III and Other Apolipoproteins

Among the exchangeable apolipoproteins, apo-CIII is a strong negative regulator of LPL. ApoC-III is elevated in metabolic syndrome [70], diabetes [71] and even young “metabolically unhealthy” lean individuals [72]. In addition, its concentration correlates positively with serum TG [73]. Regarding dietary modulation, carbohydrate intake is positively associated with apoC-III in several studies [74–77] and isocaloric carbohydrate restriction (<30g/day), in subjects with NAFLD, lowers apo-CIII [78]. Given these data, and its strong association with ASCVD [79], pharmacological strategies to lower apo-CIII are being explored for the reduction of residual cardiovascular risk [80]. The LEM predicts low levels of TGRL apo-CIII in lean persons on CRD, with implications for the possibility of ASCVD risk attenuation in LMHR. It is also worth acknowledging that other transferable apolipoproteins, including the LPL inhibitor apo-CI, and the LPL activators apo-CII and apo-AV, may also have a particular profile in LMHR. However, the complexities of whether changes in levels of these proteins are a cause or consequence of metabolic dysfunction, and how they interact with dietary macronutrient composition, are beyond the scope of this manuscript and should be the topic of future exploratory investigations.

5.2. ANGPTL Proteins

The ANGPTL family of LPL inhibitory proteins, consisting of ANGPTL 3, 4, and 8, constitute an elegant coordinated system that directs NEFA to adipose tissue during postprandial periods and to skeletal and cardiac muscle during fasting periods. The system operates as follows: ANGPTL4 is expressed locally at adipocytes and is upregulated in the fasted state [81,82], thereby downregulating LPL activity at adipocytes and reserving circulating NEFA for skeletal and cardiac muscle. In the fed state, ANGPTL4 activity decreases and ANGPTL3 and 8 are secreted by the liver and work systemically to direct NEFA away from these lean tissues and toward adipocytes for storage. Since ANGPTL3 expression is largely independent of nutrition status [83], and requires activation by ANGPTL8, which is induced by feeding, the system can be simplified as follows: ANGPTL4 increases and ANGPTL8 decreases in the fasted state to drive TG fuel to oxidative tissue, whereas following mixed diet feeding ANGPTL4 drops and ANGPTL8 levels increase to promote fat storage.

The ANGPTL3-4-8 model [84] has been influential in the development of the LEM, which predicts chronically low ANGPTL8 in lean persons consuming CRDs. This prediction is bolstered by the findings that BMI positively correlates with ANGPTL8 [85] and that ANGPTL8 is induced by insulin [86]. Reduced levels of ANGPTL8 in LMHR could be one mechanism by which skeletal and cardiac myocytes maximize their capacity to oxidize TG from circulating TGRL. Predicting levels of ANGPTL4 is more complicated as, while BMI is positively associated with ANGPTL4 [87], it is induced by NEFA-responsive peroxisome proliferator activated receptor (PPAR) transcriptional regulators [88]. Thus, focusing specifically on the ANGPTL4 system, there are two opposing possibilities: that

chronically elevated ANPGTL4 helps direct NEFA to oxidative tissues or that decreased ANGPTL4 permits rapid replenishment of depleted adipocytes in LMHR and that NEFAs flux from VLDLs through adipocytes and HSL-mediated lipolysis into oxidative tissue at a high rate. Investigating ANGPTL dynamics, in addition to radiotracer studies, could help parse between these two possibilities.

5.3. FGF21

Finally, the role of fibroblast growth factor 21 (FGF21) in VLDL secretion and LPL-mediated VLDL turnover warrants consideration. FGF21 is a hepatokine and myokine induced downstream of PPAR- α in response to states of increased lipid energy demand and circulating NEFAs: states including fasting in humans [89], exercise [90], and a ketogenic diet in mice [91]. FGF21, in turn, regulates the expression of a wide array of genes important in ketosis and lipid oxidation, including ANGPTL4 [91]. Interestingly, in mice, FGF21 knockdown via short hairpin RNA contributed to hypertriglyceridemia that was not exacerbated by pharmacological inhibition of LPL, suggesting FGF21 may positively regulate peripheral LPL activity [91].

One could hypothesize that carbohydrate restriction and fat-adaptation in lean subjects causes increased lipolysis and circulating NEFAs, which activate PPAR- α to induce FGF21 and upregulate ketogenesis, lipid oxidation, and LPL-mediated VLDL turnover. This “NEFA-PPAR-FGF21-LPL” axis is particularly intriguing in light of thinking that obesity and related diseases may represent an “FGF21-resistant” state analogous to insulin resistance [92–95] and with paradoxically high FGF21, and could operate alongside promising efforts to develop FGF21-directed therapy to treat atherogenic dyslipidemia, diabetes, and NAFLD [96,97]. Exploring FGF21 dynamics, as well as the FGF21/FGF1 ratio that has been proposed to regulate lipolysis [98,99] (and even the possible impact of FGF21 on carbohydrate and sugar taste preferences [100] and alcohol consumption [101]), in LMHR as part of the LEM, could provide insight into hormonal mechanisms of metabolic disease.

Admittedly, interpretation of the literature on FGF21 is complicated by the fact that the hormone may serve different signaling roles in rodents and in humans and that serum measures of FGF21 in humans may not reflect levels of downstream signaling given varying degrees of FGF21 sensitivity. For example, weight loss with carbohydrate reduction may result in lower FGF21, associated with improvements in hepatic insulin sensitivity [95]. In brief, investigating FGF21 levels and downstream signaling in LMHR could provide insight more broadly applicable to human metabolism.

6. Testable Predictions of the Lipid Energy Model

The aim of this review is to present an explanation of the LMHR phenotype, with testable hypotheses to guide future investigation. We here provide our “wish-list” of future experiments that could help to evaluate and/or evolve the LEM.

- (i) **Tracer study:** Kinetic studies using stable isotope-labeled tracer methods could be employed to track (1) hepatic NEFA uptake, (2) hepatic VLDL-TG/VLDL-P secretion (3) VLDL peripheral turnover, and (4) free cholesterol transfer from TGRL to HDL.
 - The LEM predicts increased rates of hepatic NEFA uptake, VLDL-TG/VLDL-P secretion and turnover, and transfer of free cholesterol from TGRL to HDL, in lean metabolically healthy persons on CRD, as compared to metabolically unhealthy subjects or those with obesity.
- (ii) **“Gym hypothesis:”** If the LMHR phenotype is a generalizable metabolic phenomenon, it should be reproducible. This possibility could be assessed with a dietary crossover study including a group of lean, athletic persons, and overweight non-diabetic controls consuming mixed diets. Both groups would undergo a controlled four-week weight-maintenance ketogenic diet and a controlled mixed diet to see if the LMHR phenotype could be induced and reversed.

- The LEM predicts implementation of a CRD in lean metabolically healthy persons with high aerobic energy demands would reproducibly induce a LMHR or LMHR-like lipid profile. The LEM also predicts increases in exercise load would increase LDL-C and HDL-C in present (or induced) LMHR when controlling for weight and carbohydrate intake.
- (iii) **Carbohydrate titration crossover:** To establish the nature of the relationship between carbohydrate intake as percent of total energy intake and LDL-C levels, it would be ideal to perform a crossover study including weight-stable LMHR in which calories from fat are traded for those from carbohydrates in increments of ~5% caloric intake.
- The LEM predicts a threshold or bi-phasic relationship between carbohydrate intake and LDL-C, in which VLDL secretion, and LDL-C levels (as well as lipolytic transfer of free cholesterol from TGRL to HDL) decrease in correspondence with elevated hepatic glycogen stores and plasma insulin and leptin.
- (iv) **Genetic heterogeneity:** Even if the LMHR phenotype is reproducible, there will still likely be a meaningful degree of heterogeneity in LDL-C response to CRD among subjects with similar levels of adiposity. It would be informative to perform a cross-sectional analysis of lean persons consuming a CRD with comprehensive genetic testing of genes relevant to the model, including those coding for the LDL-receptor, ApoB, PCSK9, CETP, LPL and its regulatory proteins (GPIHBP1, ANGPTL3, 4, and 8, ApoCI-III, ApoAV, FGF21), and more.
- The LEM predicts inverse correlations between adiposity and LDL-C and HDL-C changes on CRD that would be relatively generalizable, but that the strength of the associations would be modified by gene-environment interactions that could meaningfully advance the LEM and integrate the model with present understanding of ASCVD pathology.
- (v) **LPL regulator analysis:** It would be informative to measure levels of specific LPL regulators to gain insight into the possible mechanisms behind NEFA and TGRL trafficking.
- The LEM predicts low levels of apo-CIII, ANGPTL8, and 3–8 complex. ANGPTL4 levels may be depleted or elevated in LMHR, with implications on whether NEFA are directed from TGRL directly to oxidative tissue or first trafficked through adipocytes. FGF21 may be elevated, although this prediction is complicated by the possible differing roles of FGF21 in rodent models and humans, and by the suggestion of FGF21 resistance in humans with obesity. Nevertheless, interrogating the possibility role of FGF21 signaling in LMHR may prove an informative line of investigation and one that provides broader clarification on FGF21 in human metabolism.
- (vi) **Evaluation of risk:** While not directly related to the LEM itself, an important forthcoming line of inquiry regards an assessment of the degree to which the LMHR profile is associated with increased progression of atherosclerosis. The conservative clinical perspective is to assume that the high levels of apoB-containing lipoproteins present in LMHR are atherogenic and require treatment with lifestyle modification and/or pharmacotherapy, without exception. However, to properly provide evidence-based recommendations for this unique subgroup of patients we must systematically study them. A prospective study assessing atherosclerotic progression in 100 LMHR by coronary computed tomographic angiography, recently launched from the Lindquist institute, will provide data which will be informative regarding the clinical care of LMHR. However, given the absence of comparator coronary computed tomographic angiography data, and the fact that clinically relevant ASCVD can take years to decades to develop, there is much work to be done to assess the absolute clinical risk of the LMHR profile.

Concisely stated, the LEM provides a mechanistic hypothesis explaining the inverse association between BMI and LDL-C and HDL-C change that can occur in individuals adopting CRD in the context of low TG, as well as the associated LMHR phenotype. Critical future lines of investigation include:

- *Those that could evaluate key elements of the LEM:* Demonstrating increased hepatic VLDL secretion and LPL-mediated peripheral VLDL turnover in LMHR (tracer study) and demonstrating that the LMHR phenotype is relatively reproducible (gym hypothesis).
- *Those that would help to refine the LEM:* By better characterizing the dose-response relationship between carbohydrate intake and LDL-C change (carbohydrate titration crossover), describing the putative contribution of genotype (genetic heterogeneity), and defining the endocrinological mechanisms by which LPL activity is regulated in lean persons on CRD (LPL regulator analysis).
- *Those that would evaluate the atherosclerotic risk* associated with the LMHR phenotype (evaluation of risk, ongoing).

7. Conclusions

The Lipid Energy Model could explain the observed inverse association between BMI and LDL-C change in the context of carbohydrate restriction, as well as the Lean Mass Hyper-Responder phenotype. It provides specific and testable predictions that should be assessed in future studies. Insights gained from these studies will help us better understand the mechanisms behind LDL-C change on low-carbohydrate diets and may advance our knowledge of lipid and lipoprotein dynamics across human metabolic states.

Author Contributions: N.G.N. helped to develop the LEM, drafted the manuscript, and was chiefly in charge of implementing revisions. A.S.-M., B.K., D.S.L. and M.B. gave constructive editorial feedback. D.F. was the originator of the LEM concept, and A.K.'s RRT model strongly influenced the develop of the LEM. D.S.L. and A.K. took charge of seeking feedback from a diverse series of experts, including lipidologist, cardiologists, and endocrinologists. All authors contributed substantially and approved the final version for submission. All authors have read and agreed to the published version of the manuscript.

Funding: This research received no external funding.

Institutional Review Board Statement: Not applicable.

Informed Consent Statement: Not applicable.

Data Availability Statement: Not applicable.

Conflicts of Interest: N.G.N. is coauthor of a Mediterranean low-carbohydrate diet cookbook; he donates all royalty payments to nutrition research and education. D.S.L. received royalties for books that recommend a carbohydrate-modified diet, and his spouse owns a nutrition education and consulting business. A.K. is an author of a patent EP17306042 entitled "Novel Assay of HDL Function." D.F. receives financial contributions from membership (e.g., through Patreon) for continued research; and is a partner in Own Your Labs LLC, with all proceeds contributed to the Citizen Science Foundation. A.S.-M. reports no relationship.

Abbreviations

ASCVD	atherosclerotic cardiovascular disease
ANGPTL	angiotensin-like proteins
BMI	body mass index
CE	cholesteryl ester
CETP	cholesteryl ester transfer protein
CRD	carbohydrate-restricted diet
FGF21	fibroblast growth factor 21
HDL-C	HDL-cholesterol
HSL	hormone-sensitive lipase
IDL	intermediate-density lipoprotein

LBM	lean body mass
LDL-C	LDL-cholesterol
LEM	Lipid Energy Model
LMHR	lean mass hyper-responders
LPL	lipoprotein lipase
NAFLD	non-alcoholic fatty liver disease
NEFA	non-esterified fatty acids
PPAR	peroxisome proliferator activated receptor
RRT	Reverse Remnant-Cholesterol Transport
sdLDL	small dense LDL
TG	triglycerides
TGRL	triglyceride-rich lipoprotein
VLDL	very low-density lipoprotein

References

- Ludwig, D.S. The Ketogenic Diet: Evidence for Optimism but High-Quality Research Needed. *J. Nutr.* **2020**, *150*, 1354–1359. [[CrossRef](#)]
- Creighton, B.C.; Hyde, P.N.; Maresh, C.M.; Kraemer, W.J.; Phinney, S.D.; Volek, J.S. Paradox of hypercholesterolaemia in highly trained, keto-adapted athletes. *BMJ Open Sport Exerc. Med.* **2018**, *4*, e000429. [[CrossRef](#)]
- Buren, J.; Ericsson, M.; Damasceno, N.R.T.; Sjodin, A. A Ketogenic Low-Carbohydrate High-Fat Diet Increases LDL Cholesterol in Healthy, Young, Normal-Weight Women: A Randomized Controlled Feeding Trial. *Nutrients* **2021**, *13*, 814. [[CrossRef](#)]
- Retterstol, K.; Svendsen, M.; Narverud, I.; Holven, K.B. Effect of low carbohydrate high fat diet on LDL cholesterol and gene expression in normal-weight, young adults: A randomized controlled study. *Atherosclerosis* **2018**, *279*, 52–61. [[CrossRef](#)] [[PubMed](#)]
- Valsdottir, T.D.; Henriksen, C.; Odden, N.; Nellesmann, B.; Jeppesen, P.B.; Hisdal, J.; Westerberg, A.C.; Jensen, J. Effect of a Low-Carbohydrate High-Fat Diet and a Single Bout of Exercise on Glucose Tolerance, Lipid Profile and Endothelial Function in Normal Weight Young Healthy Females. *Front. Physiol.* **2019**, *10*, 1499. [[CrossRef](#)] [[PubMed](#)]
- Goldberg, I.J.; Ibrahim, N.; Bredefeld, C.; Foo, S.; Lim, V.; Gutman, D.; Huggins, L.A.; Hegele, R.A. Ketogenic diets, not for everyone. *J. Clin. Lipidol.* **2021**, *15*, 61–67. [[CrossRef](#)] [[PubMed](#)]
- Norwitz, N.G.; Soto-Mota, A.; Feldman, D.; Parpos, S.; Budoff, M. Case report: Hypercholesterolemia “Lean Mass Hyper-Responder” phenotype presents in the context of a low saturated fat carbohydrate-restricted diet. *Front. Endocrinol.* **2022**, *13*. [[CrossRef](#)]
- Sharman, M.J.; Gomez, A.L.; Kraemer, W.J.; Volek, J.S. Very low-carbohydrate and low-fat diets affect fasting lipids and postprandial lipemia differently in overweight men. *J. Nutr.* **2004**, *134*, 880–885. [[CrossRef](#)]
- Seshadri, P.; Iqbal, N.; Stern, L.; Williams, M.; Chicano, K.L.; Daily, D.A.; McGrory, J.; Gracely, E.J.; Rader, D.J.; Samaha, F.F. A randomized study comparing the effects of a low-carbohydrate diet and a conventional diet on lipoprotein subfractions and C-reactive protein levels in patients with severe obesity. *Am. J. Med.* **2004**, *117*, 398–405. [[CrossRef](#)]
- Hays, J.H.; DiSabatino, A.; Gorman, R.T.; Vincent, S.; Stillabower, M.E. Effect of a high saturated fat and no-starch diet on serum lipid subfractions in patients with documented atherosclerotic cardiovascular disease. *Mayo Clin. Proc.* **2003**, *78*, 1331–1336. [[CrossRef](#)]
- Hyde, P.N.; Sapper, T.N.; Crabtree, C.D.; LaFountain, R.A.; Bowling, M.L.; Buga, A.; Fell, B.; McSwiney, F.T.; Dickerson, R.M.; Miller, V.J.; et al. Dietary carbohydrate restriction improves metabolic syndrome independent of weight loss. *JCI Insight* **2019**, *4*. [[CrossRef](#)]
- Dong, T.; Guo, M.; Zhang, P.; Sun, G.; Chen, B. The effects of low-carbohydrate diets on cardiovascular risk factors: A meta-analysis. *PLoS ONE* **2020**, *15*, e0225348. [[CrossRef](#)]
- Dashti, H.M.; Al-Zaid, N.S.; Mathew, T.C.; Al-Mousawi, M.; Talib, H.; Asfar, S.K.; Behbahani, A.I. Long term effects of ketogenic diet in obese subjects with high cholesterol level. *Mol. Cell Biochem.* **2006**, *286*, 1–9. [[CrossRef](#)]
- Samaha, F.F.; Iqbal, N.; Seshadri, P.; Chicano, K.L.; Daily, D.A.; McGrory, J.; Williams, T.; Williams, M.; Gracely, E.J.; Stern, L. A low-carbohydrate as compared with a low-fat diet in severe obesity. *N. Engl. J. Med.* **2003**, *348*, 2074–2081. [[CrossRef](#)]
- Ebbeling, C.B.; Knapp, A.; Johnson, A.; Wong, J.M.W.; Greco, K.F.; Ma, C.; Mora, S.; Ludwig, D.S. Effects of a low-carbohydrate diet on insulin-resistant dyslipoproteinemia—a randomized controlled feeding trial. *Am. J. Clin. Nutr.* **2021**, *115*, 154–162. [[CrossRef](#)]
- Abbasi, J. Interest in the Ketogenic Diet Grows for Weight Loss and Type 2 Diabetes. *JAMA* **2018**, *319*, 215–217. [[CrossRef](#)]
- Libby, P. The changing landscape of atherosclerosis. *Nature* **2021**, *592*, 524–533. [[CrossRef](#)]
- Norwitz, N.G.; Feldman, D.; Soto-Mota, A.; Kalayjian, T.; Ludwig, D.S. Elevated LDL-cholesterol with a carbohydrate-restricted diet: Evidence for a ‘lean mass hyper-responder’ phenotype. *Curr. Dev. Nutr.* **2021**, *6*, nzab144. [[CrossRef](#)]
- Magill, P.; Rao, S.N.; Miller, N.E.; Nicoll, A.; Brunzell, J.; St Hilaire, J.; Lewis, B. Relationships between the metabolism of high-density and very-low-density lipoproteins in man: Studies of apolipoprotein kinetics and adipose tissue lipoprotein lipase activity. *Eur. J. Clin. Invest.* **1982**, *12*, 113–120. [[CrossRef](#)]

20. Taskinen, M.R.; Nikkila, E.A.; Kuusi, T.; Tulikoura, I. Changes of high density lipoprotein subfraction concentration and composition by intralipid in vivo and by lipolysis of intralipid in vitro. *Arteriosclerosis* **1983**, *3*, 607–615. [[CrossRef](#)]
21. Patsch, J.R.; Gotto, A.M., Jr.; Olivercrona, T.; Eisenberg, S. Formation of high density lipoprotein2-like particles during lipolysis of very low density lipoproteins in vitro. *Proc. Natl. Acad. Sci. USA* **1978**, *75*, 4519–4523. [[CrossRef](#)]
22. Tall, A.R.; Blum, C.B.; Forester, G.P.; Nelson, C.A. Changes in the distribution and composition of plasma high density lipoproteins after ingestion of fat. *J. Biol. Chem.* **1982**, *257*, 198–207. [[CrossRef](#)]
23. Groot, P.H.; Scheek, L.M. Effects of fat ingestion on high density lipoprotein profiles in human sera. *J. Lipid Res.* **1984**, *25*, 684–692. [[CrossRef](#)]
24. Hirano, T. Pathophysiology of Diabetic Dyslipidemia. *J. Atheroscler Thromb.* **2018**, *25*, 771–782. [[CrossRef](#)]
25. Kontush, A. HDL and Reverse Remnant-Cholesterol Transport (RRT): Relevance to Cardiovascular Disease. *Trends Mol. Med.* **2020**, *26*, 1086–1100. [[CrossRef](#)]
26. Randolph, G.J.; Miller, N.E. Lymphatic transport of high-density lipoproteins and chylomicrons. *J. Clin. Investig.* **2014**, *124*, 929–935. [[CrossRef](#)]
27. Green, P.H.; Glickman, R.M. Intestinal lipoprotein metabolism. *J. Lipid Res.* **1981**, *22*, 1153–1173. [[CrossRef](#)]
28. Han, Y.-H.; Onufer, E.J.; Huang, L.-H.; Sprung, R.W.; Davidson, W.S.; Czepielewski, R.S.; Wohltmann, M.; Sorci-Thomas, M.G.; Warner, B.W.; Randolph, G.J. Enterically derived high-density lipoprotein restrains liver injury through the portal vein. *Science* **2021**, *373*, eabe6729. [[CrossRef](#)]
29. Imaizumi, K.; Havel, R.J.; Fainaru, M.; Vigne, J.L. Origin and transport of the A-I and arginine-rich apolipoproteins in mesenteric lymph of rats. *J. Lipid Res.* **1978**, *19*, 1038–1046. [[CrossRef](#)]
30. Lund-Katz, S.; Lyssenko, N.N.; Nickel, M.; Nguyen, D.; Chetty, P.S.; Weibel, G.; Phillips, M.C. Mechanisms responsible for the compositional heterogeneity of nascent high density lipoprotein. *J. Biol. Chem.* **2013**, *288*, 23150–23160. [[CrossRef](#)]
31. Schaefer, E.J.; Wetzel, M.G.; Bengtsson, G.; Scow, R.O.; Brewer, H.B., Jr.; Olivercrona, T. Transfer of human lymph chylomicron constituents to other lipoprotein density fractions during in vitro lipolysis. *J. Lipid Res.* **1982**, *23*, 1259–1273. [[CrossRef](#)]
32. Gillard, B.K.; Rosales, C.; Xu, B.; Gotto, A.M., Jr.; Pownall, H.J. Rethinking reverse cholesterol transport and dysfunctional high-density lipoproteins. *J. Clin. Lipidol.* **2018**, *12*, 849–856. [[CrossRef](#)] [[PubMed](#)]
33. Barter, P.J.; Hopkins, G.J.; Calvert, G.D. Transfers and exchanges of esterified cholesterol between plasma lipoproteins. *Biochem. J.* **1982**, *208*, 1–7. [[CrossRef](#)] [[PubMed](#)]
34. Tall, A.R. Plasma cholesteryl ester transfer protein. *J. Lipid Res.* **1993**, *34*, 1255–1274. [[CrossRef](#)]
35. Chapman, M.J.; Le Goff, W.; Guerin, M.; Kontush, A. Cholesteryl ester transfer protein: At the heart of the action of lipid-modulating therapy with statins, fibrates, niacin, and cholesteryl ester transfer protein inhibitors. *Eur. Heart J.* **2010**, *31*, 149–164. [[CrossRef](#)]
36. Schwartz, C.C.; VandenBroek, J.M.; Cooper, P.S. Lipoprotein cholesteryl ester production, transfer, and output in vivo in humans. *J. Lipid Res.* **2004**, *45*, 1594–1607. [[CrossRef](#)]
37. Mann, C.J.; Yen, F.T.; Grant, A.M.; Bihain, B.E. Mechanism of plasma cholesteryl ester transfer in hypertriglyceridemia. *J. Clin. Investig.* **1991**, *88*, 2059–2066. [[CrossRef](#)]
38. Boren, J.; Watts, G.F.; Adiels, M.; Soderlund, S.; Chan, D.C.; Hakkarainen, A.; Lundbom, N.; Matikainen, N.; Kahri, J.; Verges, B.; et al. Kinetic and Related Determinants of Plasma Triglyceride Concentration in Abdominal Obesity: Multicenter Tracer Kinetic Study. *Arterioscler. Thromb. Vasc. Biol.* **2015**, *35*, 2218–2224. [[CrossRef](#)]
39. Boren, J.; Packard, C.J.; Taskinen, M.R. The Roles of ApoC-III on the Metabolism of Triglyceride-Rich Lipoproteins in Humans. *Front. Endocrinol.* **2020**, *11*, 474. [[CrossRef](#)]
40. Chapman, M.J. Therapeutic elevation of HDL-cholesterol to prevent atherosclerosis and coronary heart disease. *Pharmacol. Ther.* **2006**, *111*, 893–908. [[CrossRef](#)]
41. Guerin, M.; Lassel, T.S.; Le Goff, W.; Farnier, M.; Chapman, M.J. Action of atorvastatin in combined hyperlipidemia: Preferential reduction of cholesteryl ester transfer from HDL to VLDL1 particles. *Arterioscler. Thromb. Vasc. Biol.* **2000**, *20*, 189–197. [[CrossRef](#)]
42. Guerin, M.; Egger, P.; Soudant, C.; Le Goff, W.; van Tol, A.; Dupuis, R.; Chapman, M.J. Cholesteryl ester flux from HDL to VLDL-1 is preferentially enhanced in type IIB hyperlipidemia in the postprandial state. *J. Lipid Res.* **2002**, *43*, 1652–1660. [[CrossRef](#)]
43. Le Goff, W.; Guerin, M.; Chapman, M.J. Pharmacological modulation of cholesteryl ester transfer protein, a new therapeutic target in atherogenic dyslipidemia. *Pharmacol. Ther.* **2004**, *101*, 17–38. [[CrossRef](#)]
44. McPherson, R.; Mann, C.J.; Tall, A.R.; Hogue, M.; Martin, L.; Milne, R.W.; Marcel, Y.L. Plasma concentrations of cholesteryl ester transfer protein in hyperlipoproteinemia. Relation to cholesteryl ester transfer protein activity and other lipoprotein variables. *Arterioscler. Thromb.* **1991**, *11*, 797–804. [[CrossRef](#)]
45. Goldberg, I.J. Lipoprotein lipase and lipolysis: Central roles in lipoprotein metabolism and atherogenesis. *J. Lipid Res.* **1996**, *37*, 693–707. [[CrossRef](#)]
46. Rashid, S.; Watanabe, T.; Sakaue, T.; Lewis, G.F. Mechanisms of HDL lowering in insulin resistant, hypertriglyceridemic states: The combined effect of HDL triglyceride enrichment and elevated hepatic lipase activity. *Clin. Biochem.* **2003**, *36*, 421–429. [[CrossRef](#)]
47. Deeb, S.S.; Zambon, A.; Carr, M.C.; Ayyobi, A.F.; Brunzell, J.D. Hepatic lipase and dyslipidemia: Interactions among genetic variants, obesity, gender, and diet. *J. Lipid Res.* **2003**, *44*, 1279–1286. [[CrossRef](#)]

48. Charles, M.A.; Kane, J.P. New molecular insights into CETP structure and function: A review. *J. Lipid Res.* **2012**, *53*, 1451–1458. [[CrossRef](#)]
49. Guendouzi, K.; Collet, X.; Perret, B.; Chap, H.; Barbaras, R. Remnant high density lipoprotein2 particles produced by hepatic lipase display high-affinity binding and increased endocytosis into a human hepatoma cell line (HEPG2). *Biochemistry* **1998**, *37*, 14974–14980. [[CrossRef](#)]
50. Newnham, H.H.; Barter, P.J. Synergistic effects of lipid transfers and hepatic lipase in the formation of very small high-density lipoproteins during incubation of human plasma. *Biochim. Biophys. Acta* **1990**, *1044*, 57–64. [[CrossRef](#)]
51. Rye, K.A.; Clay, M.A.; Barter, P.J. Remodelling of high density lipoproteins by plasma factors. *Atherosclerosis* **1999**, *145*, 227–238. [[CrossRef](#)]
52. Xiao, C.; Watanabe, T.; Zhang, Y.; Trigatti, B.; Szeto, L.; Connelly, P.W.; Marcovina, S.; Vaisar, T.; Heinecke, J.W.; Lewis, G.F. Enhanced cellular uptake of remnant high-density lipoprotein particles: A mechanism for high-density lipoprotein lowering in insulin resistance and hypertriglyceridemia. *Circ. Res.* **2008**, *103*, 159–166. [[CrossRef](#)] [[PubMed](#)]
53. Lagor, W.R.; Brown, R.J.; Toh, S.A.; Millar, J.S.; Fuki, I.V.; de la Llera-Moya, M.; Yuen, T.; Rothblat, G.; Billheimer, J.T.; Rader, D.J. Overexpression of apolipoprotein F reduces HDL cholesterol levels in vivo. *Arterioscler. Thromb. Vasc. Biol.* **2009**, *29*, 40–46. [[CrossRef](#)] [[PubMed](#)]
54. Sun, H.Y.; Chen, S.F.; Lai, M.D.; Chang, T.T.; Chen, T.L.; Li, P.Y.; Shieh, D.B.; Young, K.C. Comparative proteomic profiling of plasma very-low-density and low-density lipoproteins. *Clin. Chim. Acta* **2010**, *411*, 336–344. [[CrossRef](#)]
55. Deckelbaum, R.J.; Eisenberg, S.; Oschry, Y.; Butbul, E.; Sharon, I.; Olivecrona, T. Reversible modification of human plasma low density lipoproteins toward triglyceride-rich precursors. A mechanism for losing excess cholesterol esters. *J. Biol. Chem.* **1982**, *257*, 6509–6517. [[CrossRef](#)]
56. Deckelbaum, R.J.; Ramakrishnan, R.; Eisenberg, S.; Olivecrona, T.; Bengtsson-Olivecrona, G. Triacylglycerol and phospholipid hydrolysis in human plasma lipoproteins: Role of lipoprotein and hepatic lipase. *Biochemistry* **1992**, *31*, 8544–8551. [[CrossRef](#)]
57. Goldberg, I.J.; Le, N.A.; Paterniti, J.R., Jr.; Ginsberg, H.N.; Lindgren, F.T.; Brown, W.V. Lipoprotein metabolism during acute inhibition of hepatic triglyceride lipase in the cynomolgus monkey. *J. Clin. Investig.* **1982**, *70*, 1184–1192. [[CrossRef](#)]
58. Krauss, R.M.; Burke, D.J. Identification of multiple subclasses of plasma low density lipoproteins in normal humans. *J. Lipid Res.* **1982**, *23*, 97–104. [[CrossRef](#)]
59. Berneis, K.K.; Krauss, R.M. Metabolic origins and clinical significance of LDL heterogeneity. *J. Lipid Res.* **2002**, *43*, 1363–1379. [[CrossRef](#)]
60. Williams, P.T.; Vranizan, K.M.; Krauss, R.M. Correlations of plasma lipoproteins with LDL subfractions by particle size in men and women. *J. Lipid Res.* **1992**, *33*, 765–774. [[CrossRef](#)]
61. Goschke, H. Mechanism of glucose intolerance during fasting: Differences between lean and obese subjects. *Metabolism* **1977**, *26*, 1147–1153. [[CrossRef](#)]
62. Bak, A.M.; Vendelbo, M.H.; Christensen, B.; Viggers, R.; Bibby, B.M.; Rungby, J.; Jorgensen, J.O.L.; Moller, N.; Jessen, N. Prolonged fasting-induced metabolic signatures in human skeletal muscle of lean and obese men. *PLoS ONE* **2018**, *13*, e0200817. [[CrossRef](#)]
63. Wijngaarden, M.A.; van der Zon, G.C.; van Dijk, K.W.; Pijl, H.; Guigas, B. Effects of prolonged fasting on AMPK signaling, gene expression, and mitochondrial respiratory chain content in skeletal muscle from lean and obese individuals. *Am. J. Physiol. Endocrinol. Metab.* **2013**, *304*, E1012–E1021. [[CrossRef](#)]
64. Sondergaard, E.; Nellemann, B.; Sorensen, L.P.; Christensen, B.; Gormsen, L.C.; Nielsen, S. Lean body mass, not FFA, predicts VLDL-TG secretion rate in healthy men. *Obesity* **2015**, *23*, 1379–1385. [[CrossRef](#)]
65. Bartelt, A.; John, C.; Schaltenberg, N.; Berbee, J.F.P.; Worthmann, A.; Cherradi, M.L.; Schlein, C.; Piepenburg, J.; Boon, M.R.; Rinninger, F.; et al. Thermogenic adipocytes promote HDL turnover and reverse cholesterol transport. *Nat. Commun.* **2017**, *8*, 15010. [[CrossRef](#)]
66. Perry, R.J.; Wang, Y.; Cline, G.W.; Rabin-Court, A.; Song, J.D.; Dufour, S.; Zhang, X.M.; Petersen, K.F.; Shulman, G.I. Leptin Mediates a Glucose-Fatty Acid Cycle to Maintain Glucose Homeostasis in Starvation. *Cell* **2018**, *172*, 234–248.e217. [[CrossRef](#)]
67. Steinhilber, M.L.; Olenchock, B.A.; O’Keefe, J.; Lun, M.; Pierce, K.A.; Lee, H.; Pantano, L.; Klibanski, A.; Shulman, G.I.; Clish, C.B.; et al. The circulating metabolome of human starvation. *JCI Insight* **2018**, *3*. [[CrossRef](#)]
68. Goossens, N.; Jornayvaz, F.R. Translational Aspects of Diet and Non-Alcoholic Fatty Liver Disease. *Nutrients* **2017**, *9*, 1077. [[CrossRef](#)]
69. Luukkonen, P.K.; Dufour, S.; Lyu, K.; Zhang, X.M.; Hakkarainen, A.; Lehtimaki, T.E.; Cline, G.W.; Petersen, K.F.; Shulman, G.I.; Yki-Jarvinen, H. Effect of a ketogenic diet on hepatic steatosis and hepatic mitochondrial metabolism in nonalcoholic fatty liver disease. *Proc. Natl. Acad. Sci. USA* **2020**, *117*, 7347–7354. [[CrossRef](#)]
70. Olivieri, O.; Bassi, A.; Stranieri, C.; Trabetti, E.; Martinelli, N.; Pizzolo, F.; Girelli, D.; Friso, S.; Pignatti, P.F.; Corrocher, R. Apolipoprotein C-III, metabolic syndrome, and risk of coronary artery disease. *J. Lipid Res.* **2003**, *44*, 2374–2381. [[CrossRef](#)]
71. Juntti-Berggren, L.; Berggren, P.O. Apolipoprotein CIII is a new player in diabetes. *Curr. Opin Lipidol.* **2017**, *28*, 27–31. [[CrossRef](#)]
72. Paola Gutierrez Castro, K.; Patricia Gonzalez, A.; Caccavello, R.; Garay-Sevilla, M.E.; Gugliucci, A. Lean adolescents with insulin resistance display higher angiopoietin like protein 3, ApoC-III and chylomicron remnant dyslipidemia. *Clin. Chim. Acta* **2022**, *526*, 43–48. [[CrossRef](#)]
73. Luo, M.; Su, X.; Yi, Y.; Yang, Y.; Peng, D. Apolipoprotein CIII may mediate the impacts of angiopoietin-like protein 8 on triglyceride metabolism. *Lipids Health Dis.* **2018**, *17*, 160. [[CrossRef](#)]

74. Shin, M.J.; Blanche, P.J.; Rawlings, R.S.; Fernstrom, H.S.; Krauss, R.M. Increased plasma concentrations of lipoprotein(a) during a low-fat, high-carbohydrate diet are associated with increased plasma concentrations of apolipoprotein C-III bound to apolipoprotein B-containing lipoproteins. *Am. J. Clin. Nutr.* **2007**, *85*, 1527–1532. [[CrossRef](#)]
75. Furtado, J.D.; Campos, H.; Appel, L.J.; Miller, E.R.; Laranjo, N.; Carey, V.J.; Sacks, F.M. Effect of protein, unsaturated fat, and carbohydrate intakes on plasma apolipoprotein B and VLDL and LDL containing apolipoprotein C-III: Results from the OmniHeart Trial. *Am. J. Clin. Nutr.* **2008**, *87*, 1623–1630. [[CrossRef](#)]
76. Mendoza, S.; Trenchevska, O.; King, S.M.; Nelson, R.W.; Nedelkov, D.; Krauss, R.M.; Yassine, H.N. Changes in low-density lipoprotein size phenotypes associate with changes in apolipoprotein C-III glycoforms after dietary interventions. *J. Clin. Lipidol.* **2017**, *11*, 224–233.e222. [[CrossRef](#)]
77. Huff, M.W.; Nestel, P.J. Metabolism of apolipoproteins CII, CIII1, CIII2 and VLDL-B in human subjects consuming high carbohydrate diets. *Metabolism* **1982**, *31*, 493–498. [[CrossRef](#)]
78. Mardinoglu, A.; Wu, H.; Bjornson, E.; Zhang, C.; Hakkarainen, A.; Rasanen, S.M.; Lee, S.; Mancina, R.M.; Bergentall, M.; Pietilainen, K.H.; et al. An Integrated Understanding of the Rapid Metabolic Benefits of a Carbohydrate-Restricted Diet on Hepatic Steatosis in Humans. *Cell Metab.* **2018**, *27*, 559–571.e555. [[CrossRef](#)]
79. van Capelleve, J.C.; Bernelot Moens, S.J.; Yang, X.; Kastelein, J.J.P.; Wareham, N.J.; Zwinderman, A.H.; Stroes, E.S.G.; Witztum, J.L.; Hovingh, G.K.; Khaw, K.T.; et al. Apolipoprotein C-III Levels and Incident Coronary Artery Disease Risk: The EPIC-Norfolk Prospective Population Study. *Arterioscler. Thromb. Vasc. Biol.* **2017**, *37*, 1206–1212. [[CrossRef](#)]
80. Taskinen, M.R.; Packard, C.J.; Boren, J. Emerging Evidence that ApoC-III Inhibitors Provide Novel Options to Reduce the Residual CVD. *Curr. Atheroscler. Rep.* **2019**, *21*, 27. [[CrossRef](#)]
81. Ruppert, P.M.M.; Michielsen, C.; Hazebroek, E.J.; Pirayesh, A.; Olivecrona, G.; Afman, L.A.; Kersten, S. Fasting induces ANGPTL4 and reduces LPL activity in human adipose tissue. *Mol. Metab.* **2020**, *40*, 101033. [[CrossRef](#)] [[PubMed](#)]
82. Aryal, B.; Price, N.L.; Suarez, Y.; Fernandez-Hernando, C. ANGPTL4 in Metabolic and Cardiovascular Disease. *Trends Mol. Med.* **2019**, *25*, 723–734. [[CrossRef](#)] [[PubMed](#)]
83. Ge, H.; Cha, J.Y.; Gopal, H.; Harp, C.; Yu, X.; Repa, J.J.; Li, C. Differential regulation and properties of angiopoietin-like proteins 3 and 4. *J. Lipid Res.* **2005**, *46*, 1484–1490. [[CrossRef](#)] [[PubMed](#)]
84. Zhang, R.; Zhang, K. An updated ANGPTL3–4–8 model as a mechanism of triglyceride partitioning between fat and oxidative tissues. *Prog. Lipid Res.* **2021**, *85*, 101140. [[CrossRef](#)]
85. Ye, J.; Qin, Y.; Wang, D.; Yang, L.; Yuan, G. The Relationship between Circulating ANGPTL8/Betatrophin Concentrations and Adult Obesity: A Meta-Analysis. *Dis. Markers* **2019**, *2019*, 5096860. [[CrossRef](#)]
86. Ren, G.; Kim, J.Y.; Smas, C.M. Identification of RIFL, a novel adipocyte-enriched insulin target gene with a role in lipid metabolism. *Am. J. Physiol. Endocrinol. Metab.* **2012**, *303*, E334–E351. [[CrossRef](#)]
87. Cinkajzlova, A.; Mraz, M.; Lacinova, Z.; Klouckova, J.; Kavalkova, P.; Kratochvilova, H.; Trachta, P.; Krizova, J.; Haluzikova, D.; Skrha, J.; et al. Angiopoietin-like protein 3 and 4 in obesity, type 2 diabetes mellitus, and malnutrition: The effect of weight reduction and realimentation. *Nutr. Diabetes* **2018**, *8*, 21. [[CrossRef](#)]
88. Dijk, W.; Kersten, S. Regulation of lipoprotein lipase by Angptl4. *Trends Endocrinol. Metab.* **2014**, *25*, 146–155. [[CrossRef](#)]
89. Holmes, D. Metabolism: Fasting induces FGF21 in humans. *Nat. Rev. Endocrinol.* **2016**, *12*, 3. [[CrossRef](#)]
90. Tanimura, Y.; Aoi, W.; Takanami, Y.; Kawai, Y.; Mizushima, K.; Naito, Y.; Yoshikawa, T. Acute exercise increases fibroblast growth factor 21 in metabolic organs and circulation. *Physiol. Rep.* **2016**, *4*. [[CrossRef](#)]
91. Badman, M.K.; Pissios, P.; Kennedy, A.R.; Koukos, G.; Flier, J.S.; Maratos-Flier, E. Hepatic fibroblast growth factor 21 is regulated by PPARalpha and is a key mediator of hepatic lipid metabolism in ketotic states. *Cell Metab.* **2007**, *5*, 426–437. [[CrossRef](#)]
92. Hong, E.S.; Lim, C.; Choi, H.Y.; Lee, Y.K.; Ku, E.J.; Moon, J.H.; Park, K.S.; Jang, H.C.; Choi, S.H. Plasma fibroblast growth factor 21 levels increase with ectopic fat accumulation and its receptor levels are decreased in the visceral fat of patients with type 2 diabetes. *BMJ Open Diabetes Res. Care* **2019**, *7*, e000776. [[CrossRef](#)]
93. Fisher, F.M.; Chui, P.C.; Antonellis, P.J.; Bina, H.A.; Kharitonov, A.; Flier, J.S.; Maratos-Flier, E. Obesity is a fibroblast growth factor 21 (FGF21)-resistant state. *Diabetes* **2010**, *59*, 2781–2789. [[CrossRef](#)]
94. Domouzoglou, E.M.; Maratos-Flier, E.E. Fibroblast growth factor 21 is a metabolic regulator that plays a role in the adaptation to ketosis. *Am. J. Clin. Nutr.* **2011**, *93*, 901S–905S. [[CrossRef](#)]
95. Hron, B.M.; Ebbeling, C.B.; Feldman, H.A.; Ludwig, D.S. Hepatic, adipocyte, enteric and pancreatic hormones: Response to dietary macronutrient composition and relationship with metabolism. *Nutr. Metab.* **2017**, *14*, 44. [[CrossRef](#)]
96. Geng, L.; Lam, K.S.L.; Xu, A. The therapeutic potential of FGF21 in metabolic diseases: From bench to clinic. *Nat. Rev. Endocrinol.* **2020**, *16*, 654–667. [[CrossRef](#)]
97. Tillman, E.J.; Rolph, T. FGF21: An Emerging Therapeutic Target for Non-Alcoholic Steatohepatitis and Related Metabolic Diseases. *Front. Endocrinol.* **2020**, *11*, 601290. [[CrossRef](#)]
98. Sancar, G.; Liu, S.; Gasser, E.; Alvarez, J.G.; Moutos, C.; Kim, K.; van Zutphen, T.; Wang, Y.; Huddy, T.F.; Ross, B.; et al. FGF1 and insulin control lipolysis by convergent pathways. *Cell Metab.* **2022**, *34*, 171–183. [[CrossRef](#)]
99. Wang, A.; Yan, X.; Zhang, C.; Du, C.; Long, W.; Zhan, D.; Luo, X. Characterization of fibroblast growth factor 1 in obese children and adolescents. *Endocr. Connect.* **2018**, *7*, 932–940. [[CrossRef](#)]

100. Jensen-Cody, S.O.; Flippo, K.H.; Claflin, K.E.; Yavuz, Y.; Sapouckey, S.A.; Walters, G.C.; Usachev, Y.M.; Atasoy, D.; Gillum, M.P.; Potthoff, M.J. FGF21 Signals to Glutamatergic Neurons in the Ventromedial Hypothalamus to Suppress Carbohydrate Intake. *Cell Metab.* **2020**, *32*, 273–286.e6. [[CrossRef](#)]
101. Flippo, K.H.; Trammell, S.A.J.; Gillum, M.P.; Aklan, I.; Prez, M.B.; Yavuz, Y.; Smith, N.K.; Jensen-Cody, S.O.; Zhou, B.; Claflin, K.E.; et al. FGF21 suppresses alcohol consumption through an amygdalo-striatal circuit. *Cell Metab.* **2022**, *34*, 317–328.e6. [[CrossRef](#)]