

# UCLA

## UCLA Previously Published Works

### Title

Association of Acute and Chronic Hyperglycemia With Acute Ischemic Stroke Outcomes Post-Thrombolysis: Findings From Get With The Guidelines-Stroke

### Permalink

<https://escholarship.org/uc/item/2bt5f7mf>

### Journal

Journal of the American Heart Association, 4(10)

### ISSN

2047-9980

### Authors

Masrur, Shihab  
Cox, Margueritte  
Bhatt, Deepak L  
[et al.](#)

### Publication Date

2015-10-27

### DOI

10.1161/jaha.115.002193

### Copyright Information

This work is made available under the terms of a Creative Commons Attribution-NonCommercial License, available at <https://creativecommons.org/licenses/by-nc/4.0/>

Peer reviewed

# Association of Acute and Chronic Hyperglycemia With Acute Ischemic Stroke Outcomes Post-Thrombolysis: Findings From Get With The Guidelines-Stroke

Shihab Masrur, MD; Margueritte Cox, MS; Deepak L. Bhatt, MD, MPH; Eric E. Smith, MD, MPH; Gray Ellrodt, MD; Gregg C. Fonarow, MD; Lee Schwamm, MD

**Background**—Hyperglycemia has been associated with adverse outcomes in patients with acute ischemic stroke (AIS) and may influence outcomes after tissue plasminogen activator (tPA). We sought to analyze the association of acute and chronic hyperglycemia on clinical outcomes in tPA-treated patients.

**Methods and Results**—We identified 58 265 AIS patients from 1408 sites who received tPA from 2009 to 2013 in Get With The Guidelines-Stroke. Acute hyperglycemia at admission was defined as a plasma glucose level >140 mg/dL. Chronic hyperglycemia was defined by plasma glycosylated hemoglobin (HbA1c) >6.5%. Post-tPA outcomes were analyzed using logistic regression. Blood glucose >140 mg/dL and HbA1c >6.5 were associated with worse clinical outcomes (symptomatic intracranial hemorrhage [sICH], life-threatening hemorrhage, and in-hospital mortality and length of stay) in diabetic and nondiabetic patients. Among patients with documented history of diabetes, increasing admission glucose up to 200 mg/dL was associated with increased adjusted odds ratio (aOR) of in-hospital mortality (aOR, 1.07) and sICH (aOR, 1.05) per 10 mg/dL increase in blood glucose. Increasing HbA1c to 8% was associated with increased odds of in-hospital mortality (aOR, 1.19) and sICH (aOR, 1.16) per 1% increase in HbA1c. Similar findings were observed in patients without a documented history of diabetes. There was no further increase in poor outcomes above the blood glucose level of 200 mg/dL or HbA1c >8.

**Conclusion**—Acute and chronic hyperglycemia are both associated with increased mortality and worse clinical outcomes in AIS patients treated with tPA. Controlled trials are needed to determine whether acute correction of hyperglycemia can improve outcomes after thrombolysis. (*J Am Heart Assoc.* 2015;4:e002193 doi: 10.1161/JAHA.115.002193)

**Key Words:** acute stroke • hyperglycemia • tissue plasminogen activator

Stroke outcomes are worse in patients with diabetes.<sup>1,2</sup> This is likely due to hyperglycemia, which is considered a poor prognostic factor in stroke patients.<sup>3,4</sup> Increased admission glucose levels in acute stroke have also been

associated with longer in-hospital stay, increased cost, and mortality.<sup>5</sup> Hyperglycemia before reperfusion potentially decreases the beneficial effect of tissue-type plasminogen activator (tPA)<sup>6</sup> given that hyperglycemia may act as an inhibitor of fibrinolysis.<sup>7</sup>

Some studies have reported an increased risk of symptomatic intracranial hemorrhage (sICH) after tPA treatment in patients with diabetes or hyperglycemia,<sup>8–10</sup> and admission glucose has been used in prognostic models to identify patients at risk of sICH after tPA.<sup>11</sup> Even though studies did not find overall reduced benefit of tPA in diabetic patients,<sup>12</sup> decreased rates of tPA administrations are observed in diabetic patients.<sup>13</sup> Guidelines recommend against tPA use in the 3- to 4.5-hour window in patients with prior stroke plus diabetes based on insufficient evidence for its effectiveness, as patients with both prior stroke and diabetes were excluded from the European Cooperative Acute Stroke Study 3 trial.<sup>14</sup> In this study, we sought to evaluate the relationship between admission hyperglycemia and the chronic hyperglycemic state on clinical outcomes in acute ischemic stroke patients with and without a recognized history of diabetes who were treated with tPA.

From the Hartford Hospital, Hartford, CT (S.M.); Duke Clinical Research Institute, Durham, NC (M.C.); Brigham and Women's Hospital Heart & Vascular Center and Harvard Medical School, Boston, MA (D.L.B.); Department of Clinical Neurosciences and Hotchkiss Brain Institute, University of Calgary, Alberta, Canada (E.E.S.); Berkshire Medical Center, Pittsfield, MA (G.E.); Ronald Reagan UCLA Medical Center, Los Angeles, CA (G.C.F.); Massachusetts General Hospital and Harvard Medical School, Boston, MA (L.S.).

Accompanying Tables S1 and S2 are available at <http://jaha.ahajournals.org/content/4/10/e002193/suppl/DC1>

**Correspondence to:** Shihab Masrur, MD, Division of Cardiology, Hartford Hospital, 80 Seymour St, Hartford, CT 06102. E-mail: shihabmasrur@hotmail.com

Received May 13, 2015; accepted August 17, 2015.

© 2015 The Authors. Published on behalf of the American Heart Association, Inc., by Wiley Blackwell. This is an open access article under the terms of the Creative Commons Attribution-NonCommercial License, which permits use, distribution and reproduction in any medium, provided the original work is properly cited and is not used for commercial purposes.

## Methods

We identified 87 975 AIS patients from 1586 sites that received intravenous tPA from 2009 to 2013 using the Get With The Guidelines Stroke (GWTG-Stroke) database. Details of the GWTG-Stroke program, including the methods of data collection and data definitions used, have been described previously.<sup>15–18</sup> All participating institutions were required to comply with local regulatory and privacy guidelines and, if required, to secure institutional review board (IRB) approval. Because data were used primarily at the local site for quality improvement, sites were granted a waiver of informed consent under the common rule. Quintiles (Cambridge, MA) served as the registry coordinating center for the American Heart Association/American Stroke Association Get With The Guidelines programs. The Duke Clinical Research Institute (Durham, NC) served as the data analysis center, and IRB approval was granted to analyze aggregate deidentified data for research purposes. We excluded 3843 patients because of missing documentation on the National Institutes of Health Stroke Scale (NIHSS), and 11 223 patients discharged or transferred to another acute care facility left against medical advice or discharge destination not documented. Of the remaining 72 909 patients, admission glucose was not documented for 14 644 patients. The final cohort consisted of 58 265 AIS patients treated with tPA. Because abnormal glucose metabolism might exert its effects by several different mechanisms, either through chronic injury resulting from diabetes or acute injury through hyperglycemia, we classified patients based on either laboratory findings or clinical history. Random plasma glucose measured at admission identified subjects with or without acute hyperglycemia. Chronic hyperglycemia was manifest as either a known previous diagnosis of diabetes mellitus (DM) in some patients, whereas others presented with occult diabetes diagnosed during the index stroke admission by elevated levels of glycosylated hemoglobin (HbA1c). The two types of hyperglycemia were defined using the latest American Diabetes Association criteria: Acute hyperglycemia at admission was defined as a random plasma glucose level >140 mg/dL, and chronic hyperglycemia was defined as a plasma level of HbA1c >6.5%.<sup>19</sup>

## Statistical Analysis

Contingency tables were generated to explore the relationship between important covariates, including demographics, clinical variables, medical history, and hospital-level characteristics, by presence of acute hyperglycemia in AIS patients treated with tPA. Primary outcomes of interest were complications of tPA thrombolytic therapy (symptomatic hemorrhage [sICH] and life-threatening systemic hemorrhage) and

all-cause in-hospital mortality. Other outcomes of interest were length of stay and ambulatory status at discharge. Chi-square for categorical variables or Wilcoxon test for continuous data were used as tests for statistical associations.

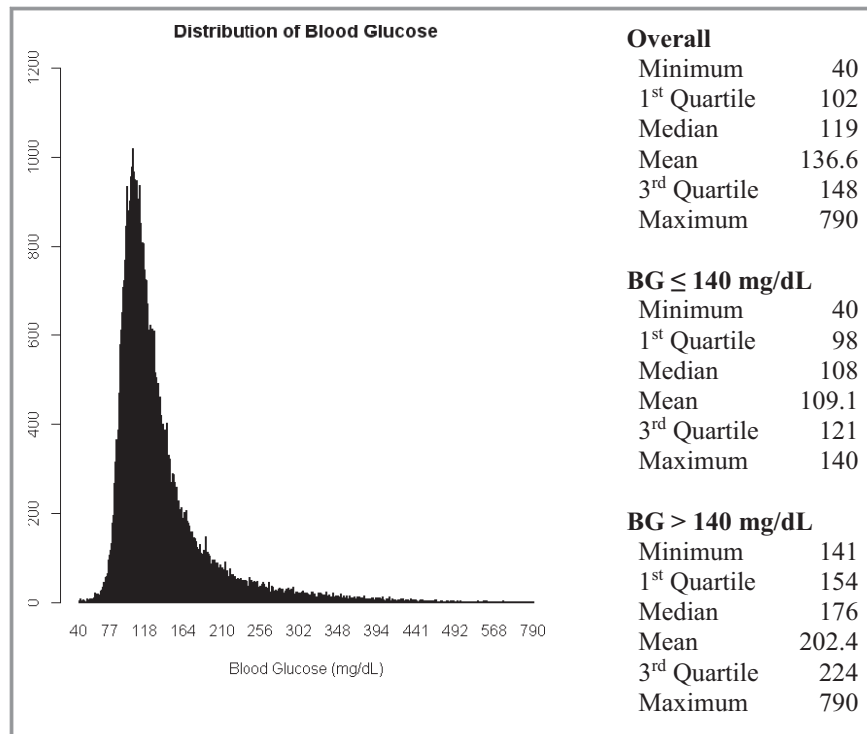
Outcomes among stroke patients receiving tPA were compared between acute hyperglycemic and nonhyperglycemic patients using logistic regression with generalized estimating equations to account for within-site clustering. Each outcome was modeled using a tiered approach. First, the unadjusted odds ratios were calculated. Next, patient characteristics were added to the model (age, gender, race [white vs other], medical history of atrial fib/flutter, previous stroke/transient ischemic attack [TIA], coronary artery disease [CAD]/previous myocardial infarction [MI], carotid stenosis, DM, peripheral vascular disease [PVD], hypertension, dyslipidemia, smoking, and NIHSS). Finally, hospital characteristics (region, academic/teaching hospital, number of beds, rural location, TJC primary stroke center status, annual ischemic stroke volume, and annual tPA volume) were added to the model. Blood glucose and HbA1c were not included in the multivariable models. Single imputations were used to reduce missingness in the models. Blood glucose and HbA1c as continuous variables were modeled with linear splines to analyze relationships with outcomes of in-hospital mortality and sICH. A knot point of 200 mg/dL provided the best fit. There was no evidence of further association above blood glucose 200 mg/dL. Next, blood glucose was modeled from 40 to 200 mg/dL with a linear spline. HbA1c was modeled from 0% to 20%.

Analyses were also performed in 2 important subgroups: (1) patients with chronic hyperglycemia as determined solely by HbA1c values and (2) patients with a documented history of DM and available hyperglycemia laboratory values. For each outcome, interaction between patients with documented history of diabetes versus no diabetes in relation to acute hyperglycemia or HbA1c were analyzed, where an interaction test  $P < 0.05$  would suggest evidence of a significant interaction between diabetic and nondiabetic patients in relation to acute hyperglycemia or HbA1c and outcomes.

Laboratory data on admission were not recorded in a large number of subjects for plasma glucose ( $n = 14\ 644$ ; 20.1%) and HbA1c ( $n = 26\ 760$ ; 36.7%). In order to determine whether this missingness was nonrandom, we compared patients characteristics between those with versus without a recorded admission glucose and those with versus without a recorded HbA1c (Tables S1 and S2).

## Results

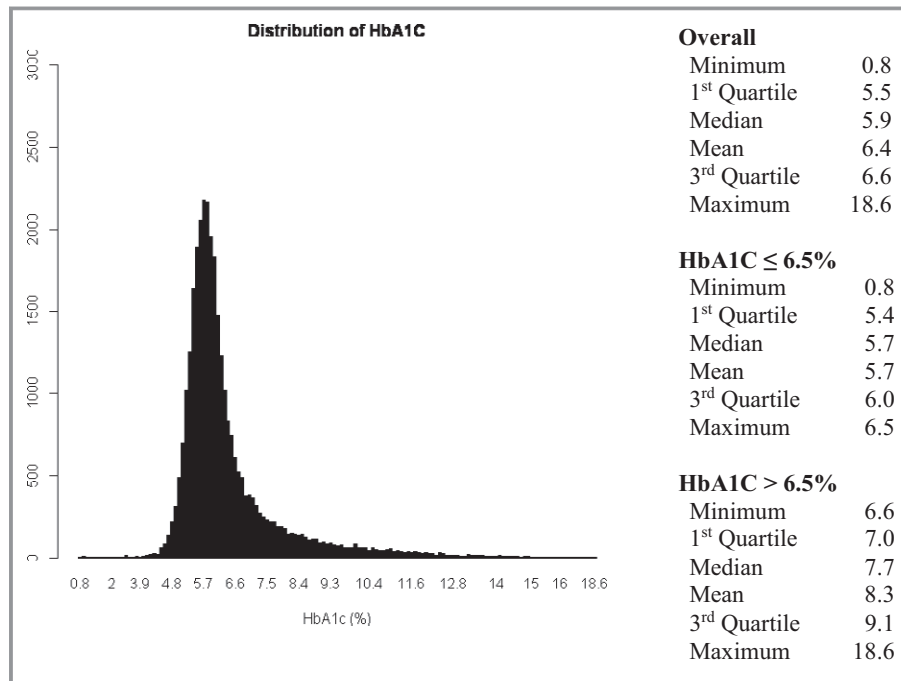
There were 72 909 patients available for analysis overall. Over the entire cohort, median age was 72 years (interquartile



**Figure 1.** Distribution of admission blood glucose (BG) values.

range [IQR], 59 to 82), 50.3% were female, and median NIHSS was 10 (6 to 17). Admission glucose was available for 58 265 and HbA1c for 31 505 patients. Median blood glucose level

was 119 mg/dL (IQR, 102 to 148), and median HbA1c was 5.9% (IQR, 5.5 to 6.6). The distribution of recorded blood glucose and HbA1c values are shown in Figures 1 and 2,



**Figure 2.** Distribution of glycosylated hemoglobin (HbA1c) values.

**Table 1.** Baseline Patient Characteristics of Acute Stroke Patients With vs Without Acute Hyperglycemia

Variable	Level	Overall (N=58 265)		Acute Hyperglycemia (BG >140 mg/dL) (N=17 203)		No Acute Hyperglycemia (BG ≤140 mg/dL) (N=41 062)		P Value
Age	Median	58 265	72.0	17 203	72.0	41 062	71.0	0.0001
	25th		59.0		61.0		59.0	
	75th		82.0		81.0		82.0	
Sex	Female	29 306	50.30	8465	49.2	20 841	50.8	0.0006
Onset to treatment time (minutes)	Median	55 869	141.0	16 463	145.0	39 406	140.0	<0.0001
	25th		110.0		112.0		109.0	
	75th		175.0		175.0		174.0	
<b>Medical history</b>								
CAD/previous MI		14 588	25.1	4999	29.1	9589	23.4	<0.0001
Carotid stenosis		1548	2.7	528	3.1	1020	2.5	<0.0001
Diabetes mellitus		15 232	26.2	9363	54.5	5869	14.3	<0.0001
PVD		2058	3.5	736	4.3	1322	3.2	<0.0001
Hypertension		42 660	73.3	13 763	80.1	28 897	70.4	<0.0001
Smoker		10 605	18.2	2614	15.2	7991	19.5	<0.0001
Dyslipidemia		23 907	41.1	7720	44.9	16 187	39.4	<0.0001
Heart failure		5330	9.2	1905	11.1	3425	8.4	<0.0001
NIHSS Score	Median	58 265	10.0	17 203	11.0	41 062	10.0	<0.0001
	25th		6.0		6.0		6.0	
	75th		17.0		18.0		17.0	
HbA1c, %	Median	31 505	5.9	10 626	6.8	20 879	5.8	<0.0001
	25th		5.5		6.0		5.4	
	75th		6.6		8.3		6.1	
<b>Complications of thrombolytic therapy</b>								
Symptomatic ICH		2717	4.7	1067	6.2	1650	4.0	<0.0001
Serious/life-threatening hemorrhage		594	1.0	279	1.6	315	0.8	<0.0001
Other complication		1968	3.4	717	4.2	1251	3.1	<0.0001
<b>Other outcomes</b>								
In-hospital mortality		4572	7.9	1937	11.3	2635	6.4	<0.0001
LOS >4 days		29 026	51.4	9435	56.5	19 591	49.3	<0.0001
Unable to ambulate at discharge		15 112	29.0	5616	36.5	9496	25.9	<0.0001
<b>Hospital characteristics</b>								
Academic/teaching hospital		36 909	63.7	10 953	64.0	25 956	63.6	0.36
Region	West	11 517	19.8	3306	19.2	8211	20.0	0.0002
	South	20 743	35.6	6128	35.6	14 615	35.6	
	Midwest	11 300	19.4	3237	18.8	8063	19.6	
	Northeast	14 705	25.2	4532	26.3	10 173	24.8	

BG indicates blood glucose; CAD, coronary artery disease; HbA1c, glycosylated hemoglobin; ICH, intracranial hemorrhage; LOS, length of stay; MI, myocardial infarction; NIHSS, National Institutes of Health Stroke Scale; PVD, peripheral vascular disease.

respectively. A previous history of diabetes was documented in 15 232 patients; of these with history of diabetes, 9363 had blood glucose >140 mg/dL at admission and 6346 had HbA1c >6.5.

### Acute Hyperglycemia on Admission

Characteristics of AIS patients treated with intravenous tPA according to admission blood glucose level are presented in

**Table 2.** Multivariable Model of the Association Between Acute Hyperglycemia\* and Clinical Outcomes

Outcome	Unadjusted Model			Adjusted Model (Patient Characteristics)			Fully Adjusted Model (Patient and Hospital Characteristics)		
	OR	95% CI	P Value	OR	95% CI	P Value	OR	95% CI	P Value
<b>Complications of thrombolytic therapy</b>									
Symptomatic ICH	1.57	(1.45, 1.69)	<0.0001	1.40	(1.29, 1.53)	<0.0001	1.41	(1.29, 1.53)	<0.0001
Serious/life-threatening hemorrhage	2.13	(1.82, 2.49)	<0.0001	1.90	(1.61, 2.25)	<0.0001	2.13	(1.82, 2.49)	<0.0001
Other complication	1.38	(1.26, 1.52)	<0.0001	1.24	(1.12, 1.38)	<0.0001	1.25	(1.12, 1.39)	<0.0001
<b>Other outcomes</b>									
In-hospital mortality	1.87	(1.76, 1.98)	<0.0001	1.69	(1.58, 1.82)	<0.0001	1.68	(1.57, 1.80)	<0.0001
LOS >4	1.31	(1.27, 1.36)	<0.0001	1.17	(1.12, 1.22)	<0.0001	1.17	(1.12, 1.22)	<0.0001
Unable to ambulate at discharge	1.65	(1.58, 1.72)	<0.0001	1.52	(1.45, 1.59)	<0.0001	1.51	(1.44, 1.59)	<0.0001

Variables used for patient characteristics: age, gender, race (white vs other), medical history of atrial fib/flutter, previous stroke/TIA, CAD/previous MI, carotid stenosis, diabetes, PVD, hypertension, dyslipidemia, smoking, presentation during off hours, NIHSS, and systolic blood pressure. For hospital characteristics: region, academic/teaching hospital, number of beds, rural location, TJC primary stroke center status, annual ischemic stroke volume, and annual tPA volume. BG indicates blood glucose; CAD, coronary artery disease; CI, confidence interval; ICH, intracranial hemorrhage; LOS, length of stay; MI, myocardial infarction; NIHSS, National Institutes of Health Stroke Scale; OR, odds ratio; PVD, peripheral vascular disease; TIA, transient ischemic attack; TJC, the joint commission; tPA, tissue plasminogen activator.

\*Acute hyperglycemia defined as BG >140 mg/dL.

Table 1. When compared to patients with no acute hyperglycemia, those with acute hyperglycemia (n=17 203) were older in age, more frequently males, and had higher median stroke severity as measured by NIHSS. They had longer median onset to treatment time and had more frequently documented medical history of CAD, DM, PVD, hypertension, carotid stenosis, dyslipidemia, and heart failure and were more likely to be smokers. There were higher rates of sICH (6.2% vs 4.0%;  $P<0.0001$ ), life-threatening hemorrhage (1.6% vs 0.8%;  $P<0.0001$ ), and in-hospital mortality (11.3% vs 6.4%;  $P<0.0001$ ) in patients with acute hyperglycemia when compared to no hyperglycemia (Table 1). Almost one third of patients with hyperglycemia that survived in hospital were unable to ambulate independently at discharge.

In multivariable analyses, fully adjusting for patient and hospital characteristics, blood glucose >140 mg/dL was independently associated with sICH (adjusted odds ratio [aOR], 1.41; 95% confidence interval [CI], 1.29 to 1.53), life-threatening hemorrhage (aOR, 2.13; 95% CI, 1.82 to 2.49), in-patient mortality (aOR, 1.68; 95% CI, 1.57 to 1.8), length of stay >4 days (aOR, 1.17; 95% CI, 1.12 to 1.22), and inability to ambulate at discharge (aOR, 1.51; 95% CI, 1.44 to 1.59) (Table 2).

### Chronic Hyperglycemia by HbA1c

HbA1C was documented in 31 505 AIS patients treated with tPA. When compared to patients with HbA1c  $\leq 6.5\%$ , patients with elevated HbA1c were younger in age, more frequently male, and had a longer median onset to tPA treatment time. They had more-frequent documented history of CAD, DM,

hypertension, PVD, dyslipidemia, and heart failure (Table 3). Patients with elevated HbA1c had higher rates of post-tPA complications, in-patient mortality, and increased length of stay and were less likely to ambulate at discharge. After adjustment for patient and hospital characteristics, patients with HbA1c of >6.5%, compared to those with  $\leq 6.5\%$ , was independently associated with sICH (aOR, 1.25; 95% CI, 1.07 to 1.46), life-threatening hemorrhage (aOR, 1.34; 95% CI, 1.05 to 1.72), in-patient mortality (OR, 1.36; 95% CI, 1.21 to 1.53), length of stay >4 days (aOR, 1.21; 95% CI, 1.13 to 1.3), and inability to ambulate at discharge (aOR, 1.29; 95% CI, 1.19 to 1.39; Table 4).

To determine whether the nature of the association with hyperglycemia was linear or nonlinear, we also analyzed the relationship of admission blood glucose and HbA1c as continuous variables with the outcomes of in-hospital mortality and sICH. This analysis was performed separately in those with and without a documented history of diabetes. Because admission blood glucose among patients with documented history of diabetes increased from 40 to 200 mg/dL, it was associated with an increased odds of in-hospital mortality (OR, 1.07; 95% CI, 1.05 to 1.09; Figure 3A) and sICH (OR, 1.05; 95% CI, 1.03 to 1.07; Figure 3B) for every 10 mg/dL increase in blood glucose. Further increases in admission blood glucose above 200 mg/dL were not associated with further increases in rates of in-patient mortality or sICH. Similar findings were observed in patients without a documented history of diabetes. Because HbA1c among diabetics increased from 6.5% to 8%, it was associated with an increased odds of in-hospital mortality (OR, 1.19; 95% CI, 1.11 to 1.28; Figure 4A) and sICH (OR, 1.16; 95% CI, 1.06 to 1.26;



**Table 3.** Baseline Patient Characteristics of Acute Stroke Patients With vs Without Chronic Hyperglycemia as Measured by HbA 1C Levels

Variable	Level	Overall (N=31 505)	HbA1C >6.5% (N=8060)	HbA1C ≤6.5% (N=23 445)	P Value			
<b>Patient characteristics</b>								
Age	Median	31 505	70.0	8060	68.0	23 445	71.0	<0.0001
	25th		58.0		58.0		58.0	
	75th		81.0		78.0		82.0	
	Mean		68.9		67.7		69.3	
Gender	Female	15 344	48.7	3689	45.8	11 655	49.7	<0.0001
Onset to treatment time (minutes)	Median	30 222	141.0	7710	145.0	22 512	140.0	<0.0001
	25th		110.0		114.0		108.0	
	75th		175.0		177.0		174.0	
<b>Medical history</b>								
Atrial fibrillation/flutter		6329	20.1	1407	17.5	4922	21.0	<0.0001
Previous stroke/TIA		7632	24.2	2128	26.4	5504	23.5	<0.0001
CAD/previous MI		7954	25.3	2588	32.1	5366	22.9	<0.0001
Carotid stenosis		829	2.6	244	3.0	585	2.5	0.01
Diabetes mellitus		9954	31.6	6346	78.8	3608	15.4	<0.0001
PVD		1102	3.5	376	4.7	726	3.1	<0.0001
Hypertension		23 450	74.5	6701	83.2	16 749	71.5	<0.0001
Smoker		6103	19.4	1377	17.1	4726	20.2	<0.0001
Dyslipidemia		13 034	41.4	3961	49.8	9073	38.7	<0.0001
Heart failure		2913	9.3	911	11.3	2002	8.5	<0.0001
NIHSS Score	Median	31 505	10.0	8060	10.0	23 445	10.0	<0.0001
	25th		6.0		6.0		6.0	
	75th		17.0		16.0		17.0	
	Mean		11.7		11.4		11.8	
Blood glucose, mg/dL	Median	31 505	122.0	8060	183.0	23 445	114.0	<0.0001
	25th		104.0		140.0		100.0	
	75th		156.0		250.0		134.00	
<b>Complications of thrombolytic therapy</b>								
Symptomatic ICH		1379	4.4	405	5.1	974	4.2	0.001
Serious/life-threatening hemorrhage		271	0.9	85	1.1	186	0.8	0.02
Other complication		1011	3.2	291	3.6	720	3.1	0.02
<b>Other outcomes</b>								
In-hospital mortality		2145	6.8	639	7.9	1506	6.4	<0.0001
LOS >4 days		16 071	52.8	4438	57.2	11 633	51.3	<0.0001
Unable to ambulate at discharge		8064	27.5	2265	30.3	5799	26.5	<0.0001
<b>Hospital characteristics</b>								
Academic/Teaching Hospital		21 144	67.4	5301	66.1	15 843	67.9	0.003
Region	West	6336	20.1	1530	18.9	4806	20.5	0.02
	South	11 360	36.1	2958	36.7	8402	35.8	
	Midwest	6186	19.6	1566	19.4	4620	19.7	
	Northeast	7623	24.2	2006	24.9	5617	23.9	

CAD indicates coronary artery disease; HbA1c, glycosylated hemoglobin; ICH, intracranial hemorrhage; LOS, length of stay; MI, myocardial infarction; NIHSS, National Institutes of Health Stroke Scale; PVD, peripheral vascular disease; TIA, transient ischemic attack.

**Table 4.** Multivariable Model of the Association Between Chronic Hyperglycemia\* and Clinical Outcomes

Outcome	Unadjusted Model			Adjusted Model (Patient Characteristics Only)			Adjusted Model (Patient and Hospital Characteristics)		
	OR	95% CI	P Value	OR	95% CI	P Value	OR	95% CI	P Value
<b>Complications of thrombolytic therapy</b>									
Symptomatic ICH	1.22	(1.08, 1.38)	0.002	1.24	(1.06, 1.45)	0.01	1.25	(1.07, 1.46)	0.01
Serious/life-threatening hemorrhage	1.34	(1.05, 1.72)	0.02	1.37	(0.99, 1.89)	0.07	1.34	(1.05, 1.72)	0.02
Other complication	1.18	(1.04, 1.35)	0.01	1.05	(0.89, 1.24)	0.57	1.06	(0.89, 1.25)	0.52
<b>Other outcomes</b>									
In-hospital mortality	1.28	(1.17, 1.40)	<0.0001	1.37	(1.21, 1.54)	<0.0001	1.36	(1.21, 1.53)	<0.0001
LOS >4	1.26	(1.20, 1.3)	<0.0001	1.21	(1.13, 1.30)	<0.0001	1.21	(1.13, 1.30)	<0.0001
Unable to ambulate at discharge	1.22	(1.16, 1.3)	<0.0001	1.30	(1.20, 1.40)	<0.0001	1.29	(1.19, 1.39)	<0.0001

Variables used for patient characteristics: age, gender, race (white vs other), medical history of atrial fib/flutter, previous stroke/TIA, CAD/previous MI, carotid stenosis, diabetes, PVD, hypertension, dyslipidemia, smoking, presentation during off hours, NIHSS, and systolic blood pressure. For hospital characteristics: region, academic/teaching hospital, number of beds, rural location, TJC primary stroke center status, annual ischemic stroke volume, and annual tPA volume. CAD indicates coronary artery disease; CI, confidence interval; HbA1c, glycosylated hemoglobin; ICH, intracranial hemorrhage; LOS, length of stay; MI, myocardial infarction; NIHSS, National Institutes of Health Stroke Scale; OR, odds ratio; PVD, peripheral vascular disease; TIA, transient ischemic attack; TJC, the joint commission; tPA, tissue plasminogen activator.

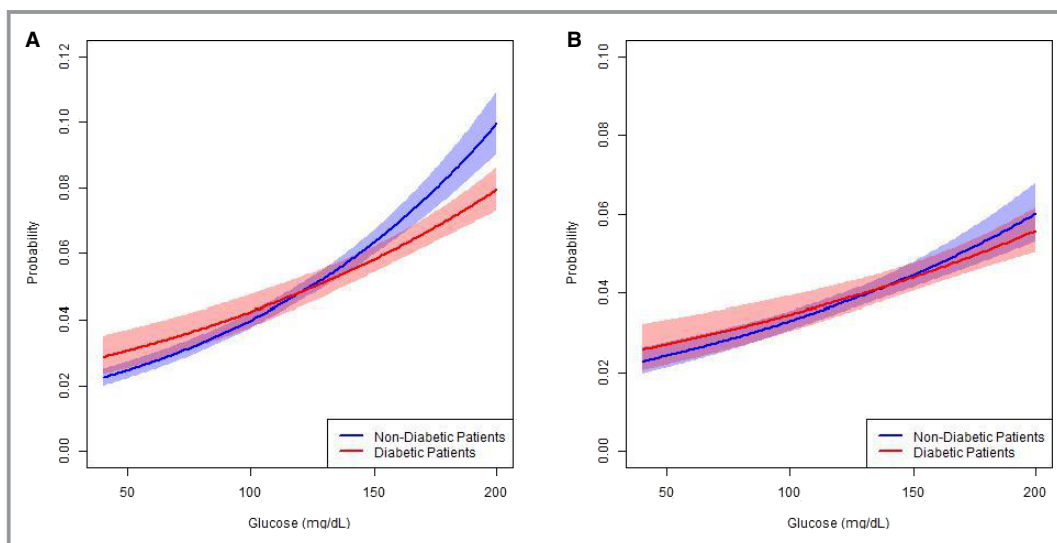
\*Chronic hyperglycemia defined as HbA1C >6.5%.

Figure 4B) per 1% increase in HbA1c. Further increases in HbA1c above 8% were not associated with further increases in rates of in-patient mortality or sICH.

### Patients With a Documented History of DM

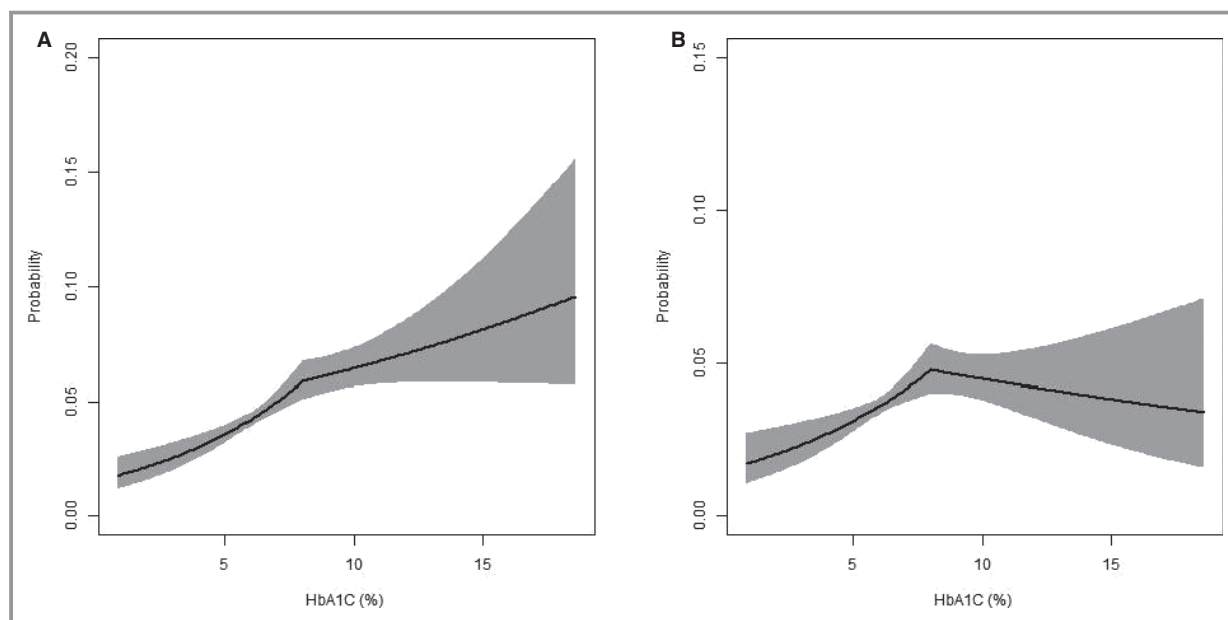
We performed additional exploratory analyses comparing the influence of acute hyperglycemia on clinical outcomes after thrombolysis in patients with a known history of DM. Patients with a history of diabetes who presented with acute hyperglycemia (blood glucose, >140 mg/dL) had worse outcomes when compared to those who presented

without acute hyperglycemia (Table 5). In multivariable analysis, hyperglycemia in patients with a history of diabetes was independently associated with sICH (aOR, 1.39; 95% CI, 1.20 to 1.61), life-threatening hemorrhage (aOR, 1.68; 95% CI, 1.26 to 2.23), in-patient mortality (OR, 1.54; 95% CI, 1.35 to 1.75), length of stay >4 days (aOR, 1.17; 95% CI, 1.10 to 1.25), and inability to ambulate at discharge (aOR, 1.52; 95% CI, 1.40 to 1.66). Finally, we compared clinical outcomes post-tPA in patients with acute hyperglycemia or elevated HbA1c and who were with versus without a known history of diabetes. Patients with acute hyperglycemia or elevated HbA1c had an increased



**Figure 3.** A, Predicted probability of in-hospital mortality (adjusted) with 95% confidence intervals; B, predicted probability of symptomatic intracranial hemorrhage (adjusted) with 95% confidence intervals.





**Figure 4.** A, Predicted probability of in-hospital mortality (adjusted) with 95% confidence intervals; B, predicted probability of symptomatic intracranial hemorrhage (adjusted) with 95% confidence intervals. HbA1c indicates glycosylated hemoglobin.

odds of poor outcomes regardless of a history of known diabetes (Tables 6 and 7, respectively).

## Discussion

In this study, we sought to evaluate the association of disorders of glucose metabolism with outcomes of AIS patients treated with intravenous tPA. We characterized patients as having a disorder of glucose metabolism by admission hyperglycemia, a known diagnosis of diabetes, or by use of glycosylated hemoglobin levels. Hyperglycemia, acute or chronic, was associated with increased mortality and worse clinical outcomes in AIS patients treated with tPA. This held true regardless of a previous known diagnosis of diabetes. The relationship was nonlinear, with a plateau observed at glucose levels above 200 mg/dL and HbA1c levels above 8.0%.

Acute hyperglycemia on admission testing is frequently observed in acute stroke. In patients treated with tPA within 3 hours of stroke onset, acute hyperglycemia has been associated with poor outcomes.<sup>12</sup> These observations may be owing, in part, to the possibility of decreased thrombolytic effectiveness of alteplase in the setting of hyperglycemia. A previous study observed that acute, but not chronic, hyperglycemia was associated with lower rates of tPA-induced recanalization.<sup>20</sup> That study was small and the mean reported HbA1c was  $6.3 \pm 0.8\%$ . Our study is consistent with, and builds upon, previous studies showing that acute hyperglycemia is associated with fewer favorable outcomes in tPA-

treated patients. However, it is also likely that chronic hyperglycemia may be exerting a role in poor outcomes. Our data also demonstrate that patients with chronic hyperglycemia (as defined by HbA1c  $>6.5\%$ ) also experienced worse outcomes compared to those with HbA1c levels  $\leq 6.5\%$ . Subset analyses also suggest that the actual values of plasma glucose and HbA1c during admission are more important than a previous documented diagnosis of diabetes per se. These data should raise concern about the risks of poor outcome after thrombolysis for patients with disorders of glucose metabolism, a condition with increasing incidence and prevalence in the United States.<sup>21</sup> It is possible that this risk could be mitigated by better chronic and acute glycemic control. However, because of the nonrandomized design of our study, we were unable to determine whether this increased sICH risk was associated with fewer benefits from tPA. Previous subgroup analyses of tPA randomized, controlled trials show that the effect of tPA is the same in diabetic versus nondiabetic patients.<sup>22</sup> This supports the recommendations of others that thrombolysis can be safely given to diabetic patients.<sup>23</sup>

The exact threshold at which elevated blood glucose levels are associated with elevated risk has not been well established. Previous studies suggested that a blood glucose level of 160 mg/dL or more may be a cutoff for poor outcomes.<sup>20,24</sup> One study reported a linear relation between admission glucose and an increase in the odds of sICH (OR 1.75 per 100 mg/dL increase in admission glucose).<sup>5</sup> Admission blood glucose levels were identified as a risk factor for sICH after intravenous tPA in several risk models for

**Table 5.** Baseline Patient Characteristics of Acute Stroke Patients and a Documented History of Diabetes (n=15 232) With vs Without Acute Hyperglycemia

Variable	Level	Overall (N=15 232)	Acute Hyperglycemia (BG >140 mg/dL) (N=9363)	No Hyperglycemia (N=5869)	P Value			
<b>Patient characteristics</b>								
Age	Median	15 232	71.0	9363	70.0	5869	72.0	<0.0001
	25th		61.0		60.0		62.0	
	75th		80.0		79.0		81.0	
Gender	Female	7585	49.8	4505	48.1	3080	52.5	<0.0001
Onset to treatment time (minutes)	Median	14 580	145.0	8956	146.0	5624	144.0	0.002
	25th		113.0		115.0		112.0	
	75th		176.0		176.5		175.0	
	Mean		156.2		157.9		153.3	
	STD		134.2		155.6		90.1	
<b>Medical history</b>								
Atrial fibrillation/flutter		3120	20.5	1848	19.7	1272	21.7	0.004
Previous stroke/TIA		4540	29.8	2655	28.4	1885	32.1	<0.0001
CAD/previous MI		5220	34.3	3224	34.4	1996	34.0	0.59
Carotid stenosis		506	3.3	321	3.4	185	3.2	0.36
PVD		815	5.4	496	5.3	319	5.4	0.71
Hypertension		13 223	86.8	8117	86.7	5106	87.0	0.59
Smoker		2247	14.8	1356	14.5	891	15.2	0.25
Dyslipidemia		8093	53.1	4883	52.15	3210	54.7	0.002
Heart failure		1936	12.7	1185	12.7	751	12.8	0.80
NIHSS Score	Median	15 232	10.0	9363	10.0	5869	10.0	0.003
	25th		6.0		6.0		6.0	
	75th		17.0		17.0		17.0	
HbA1C, %	Median	9954	7.0	6244	7.6	3710	6.3	<0.0001
	25th		6.2		6.7		5.9	
	75th		8.3		9.1		6.9	
<b>Complications of thrombolytic therapy</b>								
Symptomatic ICH		826	5.5	570	6.1	256	4.4	<0.0001
Serious/life-threatening hemorrhage		188	1.2	137	1.5	51	0.9	0.001
Other complication		595	3.9	395	4.2	200	3.4	0.01
In-hospital mortality		1349	8.9	951	10.2	398	6.8	<0.0001
LOS >4 days		8168	55.3	5169	56.9	2999	52.7	<0.0001
Unable to ambulate at discharge		4402	32.5	2952	35.3	1450	27.9	<0.0001

BG indicates blood glucose; CAD, coronary artery disease; HbA1c, glycosylated hemoglobin; ICH, intracranial hemorrhage; LOS, length of stay; MI, myocardial infarction; NIHSS, National Institutes of Health Stroke Scale; PVD, peripheral vascular disease; TIA, transient ischemic attack.

sICH post-tPA.<sup>11,25–28</sup> Although blood glucose is one of the potential modifiable factor in these risk scores, further studies are required to evaluate whether treatment of hyperglycemia reduces risk of sICH post-tPA. Furthermore, these studies were designed to identify patients at increased risk of sICH

and do not conclude benefit or harm of tPA in patients with higher predicted risk. Our study supports the previous observations that worsening of acute or chronic plasma glucose control is associated with increasing mortality, but that the effects are nonlinear and plateau above modest levels

**Table 6.** Multivariable Model of the Association Between Acute Hyperglycemia and Clinical Outcomes for Patients With vs Without a Documented History of Diabetes

Outcome	Unadjusted Model			Adjusted Model (Patient Characteristics Only)			Fully Adjusted Model (Patient and Hospital Characteristics)		
	OR	95% CI	P Value	OR	95% CI	P Value	OR	95% CI	P Value
<b>Complications of thrombolytic therapy</b>									
Symptomatic ICH			0.13*			1.0*			0.9*
Diabetic patients	1.41	(1.23, 1.63)	<0.0001	1.40	(1.22, 1.62)	<0.0001	1.40	(1.21, 1.62)	<0.0001
Nondiabetic patients	1.63	(1.46, 1.81)	<0.0001	1.41	(1.26, 1.56)	<0.0001	1.41	(1.27, 1.57)	<0.0001
Serious/life-threatening hemorrhage			0.06*			0.29*			0.27*
Diabetic patients	1.69	(1.28, 2.25)	0.0003	1.66	(1.25, 2.21)	0.0006	1.64	(1.23, 2.20)	0.0007
Nondiabetic patients	2.43	(1.98, 2.97)	<0.0001	2.01	(1.64, 2.46)	<0.0001	2.02	(1.64, 2.47)	<0.0001
<b>Other outcomes</b>									
In-hospital mortality			<0.0001*			0.21*			0.16*
Diabetic patients	1.56	(1.37, 1.76)	<0.0001	1.58	(1.39, 1.80)	<0.0001	1.55	(1.37, 1.76)	<0.0001
Nondiabetic patients	2.13	(1.96, 2.31)	<0.0001	1.75	(1.61, 1.91)	<0.0001	1.74	(1.60, 1.89)	<0.0001
LOS >4			0.005*			1.0*			0.9*
Diabetic patients	1.17	(1.10, 1.25)	<0.0001	1.17	(1.09, 1.25)	<0.0001	1.16	(1.09, 1.24)	<0.0001
Nondiabetic patients	1.31	(1.25, 1.37)	<0.0001	1.17	(1.11, 1.23)	<0.0001	1.17	(1.11, 1.23)	<0.0001
Unable to ambulate at discharge			<0.0001*			0.61*			0.73*
Diabetic patients	1.41	(1.31, 1.53)	<0.0001	1.55	(1.42, 1.69)	<0.0001	1.53	(1.41, 1.67)	<0.0001
Nondiabetic patients	1.78	(1.68, 1.89)	<0.0001	1.51	(1.41, 1.61)	<0.0001	1.50	(1.41, 1.60)	<0.0001

Variables used for patient characteristics: age, gender, race (white vs other), medical history of atrial fib/flutter, previous stroke/TIA, CAD/previous MI, carotid stenosis, diabetes, PVD, hypertension, dyslipidemia, smoking, presentation during off hours, NIHSS, and systolic blood pressure. For hospital characteristics: region, academic/teaching hospital, number of beds, rural location, TJC primary stroke center status, annual ischemic stroke volume, and annual tPA volume. CAD indicates coronary artery disease; CI, confidence interval; ICH, intracranial hemorrhage; LOS, length of stay; MI, myocardial infarction; NIHSS, National Institutes of Health Stroke Scale; OR, odds ratio; PVD, peripheral vascular disease; TIA, transient ischemic attack; TJC, the joint commission; tPA, tissue plasminogen activator.

\*Interaction *P* value: differences in outcomes between patients with documented history of diabetes vs no diabetes.

of hyperglycemia. Whereas early studies suggested that there may be a role of tight glucose control for reducing MI and coronary heart disease events, randomized, clinical trials have failed to demonstrate measurable benefits for strict acute or chronic glycemic control, and some have suggested increased harm.<sup>29</sup> The potential benefit of strict glucose control with aggressive insulin titration in acute stroke is unclear,<sup>30</sup> and this hypothesis is currently being tested in a large, randomized, clinical trial.<sup>31</sup> To avoid the risk of adverse effects related to hypoglycemia, guidelines recommend to maintain blood glucose in a range of 140 to 180 mg/dL.<sup>32</sup> Whereas our retrospective study suggests that better blood glucose regulation measured at admission is associated with better short-term clinical outcomes, we did not test or measure any interventions that were given in response to these glucose measurements, and thus these findings require prospective, randomized, clinical trials to evaluate the potential benefits and potential risks of any treatment in this patient population.

The study has important limitations owing to its observational nature and retrospective design. Residual measured

and unmeasured confounding may account for some of these findings. Acute and chronic hyperglycemic may be a marker, rather than a mediator, for these adverse outcomes and no cause-and-effect relationships should be inferred. Some patients with hyperglycemia on admission, but without diagnosed diabetes, may have had preexisting undiagnosed diabetes. There were missing data for admission glucose and HbA1c, which may have introduced bias into these findings. When compared to patients with missing admission blood glucose, patients with documented admission glucose were similar except for clinically insignificant history of hypertension (73% vs 72%; *P*<0.001) and being smokers (18% vs 17%; *P*=0.002). When compared to patients with HbA1c not recorded, patients with HbA1c recorded were younger in age (70 vs 73 years; *P*<0.0001), had more-frequent documented history of DM (31.6% vs 19.7%; *P*<0.0001), hypertension (74.5% vs 71.9%; *P*<0.0001), and were more likely to be smokers (19.4% vs 16.8%; *P*<0.0001). Data on postdischarge outcomes were not available. In addition, data were not available regarding any treatment of hyperglycemia.

**Table 7.** Multivariable Model of the Association Between Chronic Hyperglycemia and Clinical Outcomes for Patients With vs Without a Documented History of Diabetes

Outcome	Unadjusted Model			Adjusted Model (Patient Characteristics Only)			Adjusted Model (Patient and Hospital Characteristics)		
	OR	95% CI	P Value	OR	95% CI	P Value	OR	95% CI	P Value
<b>Complications of thrombolytic therapy</b>									
Symptomatic ICH			0.45*			0.87*			0.89*
Diabetic patients	1.14	(0.93, 1.39)	0.20	1.26	(1.20, 1.55)	0.03	1.26	(1.02, 1.55)	0.03
Nondiabetic patients	1.27	(1.02, 1.58)	0.03	1.23	(0.98, 1.53)	0.07	1.24	(0.99, 1.54)	0.06
Serious/life-threatening hemorrhage			0.06*			0.15*			0.14*
Diabetic patients	1.04	(0.69, 1.56)	0.87	1.11	(0.74, 1.67)	0.60	1.10	(0.74, 1.65)	0.63
Nondiabetic patients	1.84	(1.20, 2.83)	0.005	1.73	(1.13, 2.64)	0.01	1.73	(1.13, 2.63)	0.01
<b>Other outcomes</b>									
In-hospital mortality			0.02*			0.45*			0.35*
Diabetic patients	1.11	(0.94, 1.30)	0.21	1.31	(1.10, 1.55)	0.002	1.29	(1.09, 1.53)	0.003
Nondiabetic patients	1.11	(1.24, 1.75)	<0.0001	1.45	(1.21, 1.74)	<0.0001	1.46	(1.22, 1.74)	<0.0001
LOS >4			<0.0001*			0.02*			0.02*
Diabetic patients	1.05	(0.96, 1.14)	0.31	1.13	(1.03, 1.24)	0.09	1.13	(1.03, 1.24)	0.01
Nondiabetic patients	1.39	(1.25, 1.55)	<0.0001	1.35	(1.21, 1.51)	<0.0001	1.35	(1.21, 1.51)	<0.0001
Unable to ambulate at discharge			<0.0001*			0.14*			0.12*
Diabetic patients	0.97	(0.89, 1.06)	0.57	1.23	(1.12, 1.37)	<0.0001	1.22	(1.11, 1.35)	<0.0001
Nondiabetic patients	1.36	(1.21, 1.53)	<0.0001	1.40	(1.23, 1.60)	<0.0001	1.40	(1.23, 1.59)	<0.0001

Variables used for patient characteristics: age, gender, race (white vs other), medical history of atrial fib/flutter, previous stroke/TIA, CAD/previous MI, carotid stenosis, diabetes, PVD, hypertension, dyslipidemia, smoking, presentation during off hours, NIHSS, and systolic blood pressure. For hospital characteristics: region, academic/teaching hospital, number of beds, rural location, TJC primary stroke center status, annual ischemic stroke volume, and annual tPA volume. CAD indicates coronary artery disease; CI, confidence interval; ICH, intracranial hemorrhage; LOS, length of stay; MI, myocardial infarction; NIHSS, National Institutes of Health Stroke Scale; OR, odds ratio; PVD, peripheral vascular disease; TIA, transient ischemic attack; TJC, the joint commission; tPA, tissue plasminogen activator.

\*Interaction P value: differences in outcomes between patients with documented history of diabetes vs no diabetes.

In summary, hyperglycemia, whether acute or chronic, is associated with worse clinical outcomes in AIS patients treated with tPA regardless of a previous known diagnosis of diabetes. Admission glucose and HbA1c may help identify patients at increased risk of adverse outcomes, including sICH. Improving glycemic control in the population by primary prevention may help in better outcomes, but needs further evaluation in a prospective, randomized trial.

### Acknowledgments

The American Heart Association and the American Stroke Association fund Get With The Guidelines-Stroke. This study had no funding.

### Sources of Funding

The Get With The Guidelines-Stroke program is supported, in part, by unrestricted educational grants to the American Heart Association by Pfizer, Inc (New York, NY) and the Merck-Schering Plough Partnership (North Wales, PA), who did not participate in the design, analysis, manuscript preparation, or approval.

### Disclosures

Dr Bhatt discloses the following relationships—Advisory Board: Cardax, Elsevier Practice Update Cardiology, Medscape Cardiology, Regado Biosciences; Board of Directors: Boston VA Research Institute, Society of Cardiovascular Patient Care; Chair: American Heart Association Get With The Guidelines Steering Committee; Data Monitoring Committees: Duke Clinical Research Institute, Harvard Clinical Research Institute, Mayo Clinic, Population Health Research Institute; Honoraria: American College of Cardiology (Senior Associate Editor, Clinical Trials and News, ACC.org), Belvoir Publications (Editor in Chief, Harvard Heart Letter), Duke Clinical Research Institute (clinical trial steering committees), Harvard Clinical Research Institute (clinical trial steering committee), HMP Communications (Editor in Chief, Journal of Invasive Cardiology), Journal of the American College of Cardiology (Associate Editor; Section Editor, Pharmacology), Population Health Research Institute (clinical trial steering committee), Slack Publications (Chief Medical Editor, Cardiology Today’s Intervention), WebMD (CME steering committees); Other: Clinical

Cardiology (Deputy Editor); Research Funding: Amarin, AstraZeneca, Bristol-Myers Squibb, Eisai, Ethicon, Forest Laboratories, Ischemix, Medtronic, Pfizer, Roche, Sanofi Aventis, The Medicines Company; Unfunded Research: FlowCo, PLx Pharma, Takeda. Dr Smith: Member of the GWTG Steering Committee. Dr Fonarow: Member of the GWTG steering committee, research support from the PCORI (significant) and is an employee of the University of California, which holds a patent on retriever devices for stroke. Dr Schwamm serves as a volunteer for the American Heart Association as chair of the stroke clinical workgroup for Get with the Guideline-Stroke and chair of the Healthcare Accreditation Science Committee. He serves as the PI of an NINDS funded SPOTRIAS network trial, MR WITNESS, which is a Phase 2 safety study of alteplase delivered in an extended time window with MR-guided patient selection (NCT01282242). The study is funded primarily by NINDS, and alteplase is provided by Genentech to MGH for distribution to sites, as well as modest per patient supplemental site payments. Genentech has no control over study design, analysis or publication. He reports receiving significant research support from the Patient-Centered Outcomes Research Institute (PCORI); serving as a stroke systems consultant to the Massachusetts Department of Public Health; and serving as a scientific consultant regarding trial design and conduct to Lundbeck (international steering committee, DIAS3, 4 trial); NovoNordisk (member of DSMB for the DeVOTE trial, a clinical trial comparing the cardiovascular safety of insulin degludec to that of insulin glargine in subjects with type 2 diabetes at high risk of cardiovascular events); and Penumbra (data and safety monitoring committee, Separator 3D trial).

## References

- Sprafka JM, Virnig BA, Shahar E, McGovern PG. Trends in diabetes prevalence among stroke patients and the effect of diabetes on stroke survival: the Minnesota Heart Survey. *Diabet Med*. 1994;11:678–684.
- Megherbi SE, Milan C, Minier D, Couvreur G, Osseyby GV, Tilling K, Di Carlo A, Inzitari D, Wolfe CD, Moreau T, Giroud M; European BSoSCG. Association between diabetes and stroke subtype on survival and functional outcome 3 months after stroke: data from the European BIOMED Stroke Project. *Stroke*. 2003;34:688–694.
- Bruno A, Biller J, Adams HP Jr, Clarke WR, Woolson RF, Williams LS, Hansen MD. Acute blood glucose level and outcome from ischemic stroke. Trial of ORG 10172 in Acute Stroke Treatment (TOAST) Investigators. *Neurology*. 1999;52:280–284.
- Weir CJ, Murray GD, Dyker AG, Lees KR. Is hyperglycaemia an independent predictor of poor outcome after acute stroke? Results of a long-term follow up study. *BMJ*. 1997;314:1303–1306.
- Bruno A, Levine SR, Frankel MR, Brott TG, Lin Y, Tilley BC, Lyden PD, Broderick JP, Kwiatkowski TG, Fineberg SE; Group Nr-PSS. Admission glucose level and clinical outcomes in the NINDS rt-PA Stroke Trial. *Neurology*. 2002;59:669–674.
- Alvarez-Sabin J, Molina CA, Montaner J, Arenillas JF, Huertas R, Ribo M, Codina A, Quintana M. Effects of admission hyperglycemia on stroke outcome in reperfused tissue plasminogen activator-treated patients. *Stroke*. 2003;34:1235–1241.
- Nordt TK, Klassen KJ, Schneider DJ, Sobel BE. Augmentation of synthesis of plasminogen activator inhibitor type-1 in arterial endothelial cells by glucose and its implications for local fibrinolysis. *Arterioscler Thromb*. 1993;13:1822–1828.
- Tanne D, Kasner SE, Demchuk AM, Koren-Morag N, Hanson S, Grond M, Levine SR. Markers of increased risk of intracerebral hemorrhage after intravenous recombinant tissue plasminogen activator therapy for acute ischemic stroke in clinical practice: the Multicenter rt-PA Stroke Survey. *Circulation*. 2002;105:1679–1685.
- Demchuk AM, Morgenstern LB, Krieger DW, Linda CH, Hu W, Wein TH, Hardy RJ, Grotta JC, Buchan AM. Serum glucose level and diabetes predict tissue plasminogen activator-related intracerebral hemorrhage in acute ischemic stroke. *Stroke*. 1999;30:34–39.
- Lansberg MG, Albers GW, Wijman CA. Symptomatic intracerebral hemorrhage following thrombolytic therapy for acute ischemic stroke: a review of the risk factors. *Cerebrovasc Dis*. 2007;24:1–10.
- Menon BK, Saver JL, Prabhakaran S, Reeves M, Liang L, Olson DM, Peterson ED, Hernandez AF, Fonarow GC, Schwamm LH, Smith EE. Risk score for intracranial hemorrhage in patients with acute ischemic stroke treated with intravenous tissue-type plasminogen activator. *Stroke*. 2012;43:2293–2299.
- Generalized efficacy of t-PA for acute stroke. Subgroup analysis of the NINDS t-PA Stroke Trial. *Stroke*. 1997;28:2119–2125.
- Reeves MJ, Vaidya RS, Fonarow GC, Liang L, Smith EE, Matulonis R, Olson DM, Schwamm LH; Get With The Guidelines Steering C and Hospitals. Quality of care and outcomes in patients with diabetes hospitalized with ischemic stroke: findings from Get With the Guidelines-Stroke. *Stroke*. 2010;41:e409–e417.
- Hacke W, Kaste M, Bluhmki E, Brozman M, Davalos A, Guidetti D, Larrue V, Lees KR, Medeghri Z, Machnig T, Schneider T, Kummer R, Wahlgren N, Toni D; Investigators E. Thrombolysis with alteplase 3 to 4.5 hours after acute ischemic stroke. *N Engl J Med*. 2008;359:1317–1329.
- Schwamm LH, Fonarow GC, Reeves MJ, Pan W, Frankel MR, Smith EE, Ellrodt G, Cannon CP, Liang L, Peterson E, Labresh KA. Get With the Guidelines-Stroke is associated with sustained improvement in care for patients hospitalized with acute stroke or transient ischemic attack. *Circulation*. 2009;119:107–115.
- LaBresh KA, Reeves MJ, Frankel MR, Albright D, Schwamm LH. Hospital treatment of patients with ischemic stroke or transient ischemic attack using the “Get With The Guidelines” program. *Arch Intern Med*. 2008;168:411–417.
- Fonarow GC, Reeves MJ, Smith EE, Saver JL, Zhao X, Olson DW, Hernandez AF, Peterson ED, Schwamm LH; Committee GW-SS and Investigators. Characteristics, performance measures, and in-hospital outcomes of the first one million stroke and transient ischemic attack admissions in get with the guidelines-stroke. *Circ Cardiovasc Qual Outcomes*. 2010;3:291–302.
- Fonarow GC, Reeves MJ, Zhao X, Olson DM, Smith EE, Saver JL, Schwamm LH; Get With the Guidelines-Stroke Steering C and Investigators. Age-related differences in characteristics, performance measures, treatment trends, and outcomes in patients with ischemic stroke. *Circulation*. 2010;121:879–891.
- American Diabetes A. Diagnosis and classification of diabetes mellitus. *Diabetes Care*. 2014;37(suppl 1):S81–S90.
- Ribo M, Molina C, Montaner J, Rubiera M, Delgado-Mederos R, Arenillas JF, Quintana M, Alvarez-Sabin J. Acute hyperglycemia state is associated with lower tPA-induced recanalization rates in stroke patients. *Stroke*. 2005;36:1705–1709.
- Lackland DT, Roccella EJ, Deutsch AF, Fornage M, George MG, Howard G, Kissela BM, Kittner SJ, Lichtman JH, Lisabeth LD, Schwamm LH, Smith EE, Towfighi A; American Heart Association Stroke C, Council on C, Stroke N, Council on Quality of C, Outcomes R, Council on Functional G and Translational B. Factors influencing the decline in stroke mortality: a statement from the American Heart Association/American Stroke Association. *Stroke*. 2014;45:315–353.
- Bluhmki E, Chamorro A, Davalos A, Machnig T, Sauce C, Wahlgren N, Wardlaw J, Hacke W. Stroke treatment with alteplase given 3.0–4.5 h after onset of acute ischaemic stroke (ECASS III): additional outcomes and subgroup analysis of a randomised controlled trial. *Lancet Neurol*. 2009;8:1095–1102.
- Reiter M, Teuschl Y, Matz K, Seyfang L, Brainin M; Austrian Stroke Unit Registry C. Diabetes and thrombolysis for acute stroke: a clear benefit for diabetics. *Eur J Neurol*. 2014;21:5–10.
- Fuentes B, Castillo J, San Jose B, Leira R, Serena J, Vivancos J, Davalos A, Nunez AG, Egido J, Diez-Tejedor E; Stroke Project of the Cerebrovascular Diseases Study Group SSoN. The prognostic value of capillary glucose levels in acute stroke: the GLyemia in Acute Stroke (GLIAS) study. *Stroke*. 2009;40:562–568.
- Lou M, Safdar A, Mehdிரatta M, Kumar S, Schlaug G, Caplan L, Searls D, Selim M. The HAT Score: a simple grading scale for predicting hemorrhage after thrombolysis. *Neurology*. 2008;71:1417–1423.
- Cucchiara B, Tanne D, Levine SR, Demchuk AM, Kasner S. A risk score to predict intracranial hemorrhage after recombinant tissue plasminogen activator for acute ischemic stroke. *J Stroke Cerebrovasc Dis*. 2008;17:331–333.



27. Mazya M, Egado JA, Ford GA, Lees KR, Mikulik R, Toni D, Wahlgren N, Ahmed N; Investigators S. Predicting the risk of symptomatic intracerebral hemorrhage in ischemic stroke treated with intravenous alteplase: safe Implementation of Treatments in Stroke (SITS) symptomatic intracerebral hemorrhage risk score. *Stroke*. 2012;43:1524–1531.
28. Saposnik G, Fang J, Kapral MK, Tu JV, Mamdani M, Austin P, Johnston SC; Investigators of the Registry of the Canadian Stroke Network and Stroke Outcomes Research Canada Working Group. The iScore predicts effectiveness of thrombolytic therapy for acute ischemic stroke. *Stroke*. 2012;43:1315–1322.
29. Ray KK, Seshasai SR, Wijesuriya S, Sivakumaran R, Nethercott S, Preiss D, Erqou S, Sattar N. Effect of intensive control of glucose on cardiovascular outcomes and death in patients with diabetes mellitus: a meta-analysis of randomised controlled trials. *Lancet*. 2009;373:1765–1772.
30. Ntaios G, Papavasileiou V, Bargiota A, Makaritsis K, Michel P. Intravenous insulin treatment in acute stroke: a systematic review and meta-analysis of randomized controlled trials. *Int J Stroke*. 2014;9:489–493.
31. Bruno A, Durkalski VL, Hall CE, Juneja R, Barsan WG, Janis S, Meurer WJ, Fansler A, Johnston KC; Investigators S. The Stroke Hyperglycemia Insulin Network Effort (SHINE) trial protocol: a randomized, blinded, efficacy trial of standard vs. intensive hyperglycemia management in acute stroke. *Int J Stroke*. 2014;9:246–251.
32. Jauch EC, Saver JL, Adams HP Jr, Bruno A, Connors JJ, Demaerschalk BM, Khatri P, McMullan PW Jr, Qureshi AI, Rosenfield K, Scott PA, Summers DR, Wang DZ, Wintermark M, Yonas H; American Heart Association Stroke Council, Council on Cardiovascular Nursing, Council on Peripheral Vascular Disease and Council on Clinical Cardiology. Guidelines for the early management of patients with acute ischemic stroke: a guideline for healthcare professionals from the American Heart Association/American Stroke Association. *Stroke*. 2013;44:870–947.