

UC Davis

UC Davis Previously Published Works

Title

Impact of milk secretor status on the fecal metabolome and microbiota of breastfed infants.

Permalink

<https://escholarship.org/uc/item/29r461v4>

Journal

Gut Microbes, 15(2)

Authors

Wang, Aidong

Diana, Aly

Rahmannia, Sofa

et al.

Publication Date

2023-12-01

DOI


10.1080/19490976.2023.2257273

Copyright Information

This work is made available under the terms of a Creative Commons Attribution License, available at <https://creativecommons.org/licenses/by/4.0/>

Peer reviewed

Impact of milk secretor status on the fecal metabolome and microbiota of breastfed infants

Aidong Wang^a, Aly Diana^{b,c}, Sofa Rahmania^{d,e}, Rosalind S Gibson^f, Lisa A Houghton^f, and Carolyn M Slupsky^g 

^aDepartment of Food Science and Technology, University of California, Davis, CA, USA; ^bDepartment of Public Health, Faculty of Medicine, Universitas Padjadjaran, Bandung, Indonesia; ^cNutrition Working Group, Faculty of Medicine, Universitas Padjadjaran, Bandung, Indonesia; ^dFaculty of Medicine, Universitas Pasundan, Bandung, Indonesia; ^eSchool of Population and Global Health, University of Western Australia, Crawley, Western Australia, Australia; ^fDepartment of Human Nutrition, University of Otago, Dunedin, New Zealand; ^gDepartment of Nutrition, University of California, Davis, CA, USA

ABSTRACT

Maternal secretor status has been shown to be associated with the presence of specific fucosylated human milk oligosaccharides (HMOs), and the impact of maternal secretor status on infant gut microbiota measured through 16s sequencing has previously been reported. None of those studies have confirmed exclusive breastfeeding nor investigated the impact of maternal secretor status on gut microbial fermentation products. The present study focused on exclusively breastfed (EBF) Indonesian infants, with exclusive breastfeeding validated through the stable isotope deuterium oxide dose-to-mother (DTM) technique, and the impact of maternal secretor status on the infant fecal microbiome and metabolome. Maternal secretor status did not alter the within-community (alpha) diversity, between-community (beta) diversity, or the relative abundance of bacterial taxa at the genus level. However, infants fed milk from secretor (Se+) mothers exhibited a lower level of fecal succinate, amino acids and their derivatives, and a higher level of 1,2-propanediol when compared to infants fed milk from non-secretor (Se-) mothers. Interestingly, for infants consuming milk from Se+ mothers, there was a correlation between the relative abundance of *Bifidobacterium* and *Streptococcus*, and between each of these genera and fecal metabolites that was not observed in infants receiving milk from Se- mothers. Our findings indicate that the secretor status of the mother impacts the gut microbiome of the exclusively breastfed infant.

ARTICLE HISTORY

Received 20 March 2023
Revised 15 August 2023
Accepted 6 September 2023

KEYWORDS

Breast milk; secretor status; oligosaccharides; exclusive breastfeeding; infant; microbial metabolism; microbiota


Introduction

Although the total concentration of oligosaccharides in human milk has low biological variability, on any given day the concentrations of individual human milk oligosaccharides (HMOs) exhibit high inter-individual variation.^{1,2} Variation in the concentration of individual oligosaccharides is driven by maternal genetics, stage of lactation, as well as other unknown factors.^{3,4} The secretor (Se) gene, *fut2*, codes for α -1,2-fucosyltransferase 2 (FUT2), which is responsible for producing HMOs such as 2'-fucosyllactose (2'FL), lacto-N-fucopentaose I (LNFP I), and lactodifucotetraose (LDFT).⁵ For women with a functional FUT2 enzyme (Se+), 2'FL is the most abundant HMO in their breast milk, whereas for women with a nonfunctional FUT2 enzyme (Se-), 2'FL has been shown to be below

detection limits.^{1,6} Some studies have reported that for mothers with Se- status, α -1,2-fucosyltransferase 1 (FUT1) can synthesize 2'FL, albeit at low levels.^{4,7} Nonetheless, breastmilk from Se- mothers has been reported to have lower concentrations of fucosylated HMOs, total HMOs, and higher levels of non-fucosylated neutral HMOs when compared to breastmilk from Se+ women.^{1,6,8}

The difference in HMO profiles between women with a Se+ or Se- phenotype poses the question as to whether there may be selective advantages for the infant. As HMOs are important substrates for microbial fermentation, the impact of secretor status on infant gut microbial composition has been the focus of many studies. One such study reported

CONTACT Carolyn M Slupsky  cslupsky@ucdavis.edu  Department of Food Science and Technology, Department of Nutrition, University of California, Davis, CA, USA

 Supplemental data for this article can be accessed online at <https://doi.org/10.1080/19490976.2023.2257273>

© 2023 The Author(s). Published with license by Taylor & Francis Group, LLC.

This is an Open Access article distributed under the terms of the Creative Commons Attribution License (<http://creativecommons.org/licenses/by/4.0/>), which permits unrestricted use, distribution, and reproduction in any medium, provided the original work is properly cited. The terms on which this article has been published allow the posting of the Accepted Manuscript in a repository by the author(s) or with their consent.

that in premature infants fed Se+ milk, a trend toward lower levels of *Proteobacteria* and higher levels of *Firmicutes* was observed in the fecal microbiome compared to premature infants fed Se- milk.⁹ Two separate studies showed that Se+ milk consumption was associated with a higher abundance and faster colonization of *Bifidobacterium* in the gut of term breastfed infants.^{10,11} The impact of maternal secretor status on gut microbial composition has been reported to persist up to the age of 2–3 years, where children of secretor mothers have higher *Bifidobacterium* and lower *Bacteroides* than children of non-secretor mothers.¹² However, these associations have not been observed in all studies. One study reported no impact of maternal secretor status on infant gut microbiota when partially or exclusively breastfed (EBF) infants were born vaginally, but a shift in microbial composition was observed in cesarean-born infants.¹³ Another study reported no impact of maternal secretor status on overall breastfed infant gut microbial community or *Bifidobacterium* amplicon sequence variants (ASVs).¹⁴ A previous study reported a negative correlation between milk 2'FL and gut *Bifidobacterium* in EBF infants.¹⁵

Although studies have investigated the impact of maternal secretor status on infant microbial composition, few have reported whether it alters the gut microbial fermentation capability. It is of great interest to understand if this difference in the milk metabolome based on maternal secretor status has an impact on the production of microbial fermentation products. While previous reports investigating the impact of maternal secretor status on the infant gut microbiome have taken into account infant feeding practices, the determination of EBF status was solely based on mother's self-reporting and was not confirmed through objective techniques, such as the dose-to-mother (DTM) deuterium-oxide method.^{8–14} A previous study investigating the EBF rate of Guatemalan mothers showed that while the self-reported EBF rates were 50% (report of current feeding practice) and 61% (by 24-h recall), the EBF rate measured via the DTM method was only 36%.¹⁶ A separate study reported that based on the DTM technique, 75% of the self-reported EBF infants were fed food other than breastmilk.¹⁷ It is important to confirm EBF

status with an objective technique such as the DTM method to reduce the confounding impact of food and water intake on the infant gut microbiome. In the present study, we evaluated the impact of secretor status on infant gut microbial composition and the fecal metabolome with EBF status confirmed through the DTM method.

Results

The present study aimed to compare the gut microbiota and fecal metabolome between EBF infants receiving milk from phenotypically Se+ and Se- mothers. Only samples from those mother-infant pairs where EBF was confirmed through the DTM method, and from which infant fecal and maternal breastmilk samples were collected, were used in this study. After data generation, a few fecal samples were excluded because of suspected sequencing errors ($n = 2$) or suspected urine contamination ($n = 5$, determined by the presence of urea in the NMR spectrum). In the end, data from a total of 160 mother-infant pairs were included in the analysis.

Although the maternal secretor genotype was not determined, milk secretor phenotype was determined through analysis of quantified oligosaccharides (2'FL, 3-fucosyllactose (3FL), lacto-N-fucopentaose I (LNFP I), lacto-N-fucopentaose II (LNFP II), lacto-N-fucopentaose III (LNFP III), and lactodifucotetraose (LDFT), Supplementary Figure S1, Supplementary Table S1), and defined as Se+: [2'FL] $\geq 200 \mu\text{M}$; and Se-: [2'FL] $< 200 \mu\text{M}$ (Figure 1a). Lewis blood type associated HMOs (3FL, LNFP II and LNFP III) were also measured (Figure 1d–f). As described previously,¹⁸ based on these data, two of the mothers were classified as phenotypically Lewis negative (one in the Se+ group, and one in the Se- group).

As shown in Table 1, 113 of the mother-infant pairs were assigned to the Se+ group, while 47 were assigned to the Se- group. Maternal age and body mass index (BMI, kg/m^2), infant age, length-for-age, weight-for-age, weight-for-length, and infant BMI-for-age z-scores were comparable between the two groups. Morbidity data reflected the prevalence of disease symptoms over the last 7 days prior to sample collection. A total of 14.2% of

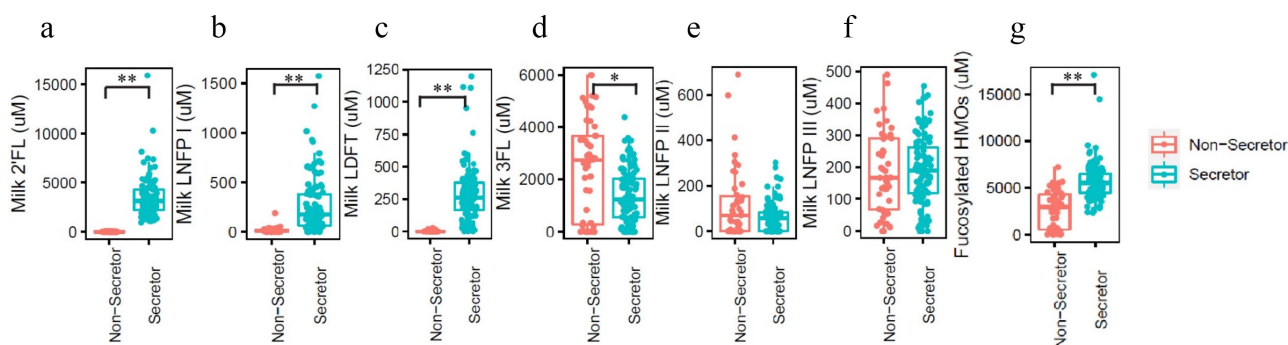


Figure 1. Representative fucosylated milk oligosaccharides measured in breast milk from mothers in this study. (a) 2'-fucosyllactose (2'FL), (b) lacto-N-fucopentaose I (LNFP I), (c) lactodifucotetraose (LDFT), (d) 3-fucosyllactose (3FL), (e) lacto-N-fucopentaose II (LNFP II), (f) lacto-N-fucopentaose III (LNFP III), (g) the summation of (a)-(f).

Table 1. Characteristics of mother and infant subjects based on mother's milk secretor status.

Characteristics	Milk secretor status phenotype		<i>p</i> -value
	Secretor	Non-secretor	
Sample size, <i>n</i>	113	47	
Mother			
Age, year	26.2 (6.0)	25.2 (5.8)	.279
BMI, kg/m ²	24.5 (3.6)	24.0 (3.3)	.486
Infant			
Sex, %female	60.20%	46.80%	.640
Age, months	3.5 (1.1)	3.5 (1.1)	.805
Length, cm	58.8 (6.0)	59.4 (3.1)	.874
Weight, kg	6.1 (0.9)	6.4 (1.0)	.356
LAZ	-1.00 (0.87)	-1.05 (0.82)	.474
WAZ	-0.36 (0.89)	-0.30 (0.89)	.630
WLZ	0.65 (1.02)	0.75 (1.06)	.395
BMIZ	0.29 (0.97)	0.41 (1.04)	.240
Vomit, <i>n</i> (%) #	8 (7.1%)	3 (6.4%)	.874
Fever, <i>n</i> (%) #	19 (16.8%)	8 (17.0%)	.975
Diarrhea, <i>n</i> (%) #	9 (8.0%)	5 (17.0%)	.586
Cough, <i>n</i> (%) #	16 (14.2%)	16 (34.0%)	.004
Tachypnea, <i>n</i> (%) #	4 (3.5%)	2 (4.3%)	.828

Mother's age, body mass index (BMI), infant age, length, weight, length-for-age z-score (LAZ), weight-for-age z-score (WAZ), weight-for-length z-score (WLZ), and infant BMI-for-age z-score (BMIZ) are shown as mean (standard deviation). *P*-values were calculated using the Mann-Whitney U test.

#Morbidity data reflect the prevalence of symptoms over a 7-day period prior to sample collection. *P*-values for morbidity data and infant sex were calculated using the chi-square test.

infants in the Se+ group reported cough, while the prevalence of these symptoms in the Se- group was significantly higher at 34.0% ($p = .004$, chi-square test). The prevalence of vomiting, fever, diarrhea, and tachypnea in the last 7 days was similar between the two groups.

To explore the impact of maternal secretor phenotype on infant fecal microbiota, 16S rRNA sequencing was performed. PCoA showed no clear separation in the microbiome between infants receiving Se+ and Se- milk (Figure 2a). Chao1 and Shannon alpha diversity showed no significant differences between the Se+ and Se- groups via the Mann-Whitney test (Chao1 $p = 0.12$ and Shannon $p = 0.21$, Figure 2b). Figure 2c, d shows those

genera with over 1% relative abundance for each of the infants from both groups, and Figure 2e shows a comparison of the average relative abundance of each genus. As expected, *Bifidobacterium* was the major genus, and the abundance was similar between infants consuming milk from Se+ and Se- mothers. Other genera present in significant amounts included *Bacteroides*, *Collinsella*, *Streptococcus*, and *Veillonella*, and no difference between the relative abundance of these taxa or other taxa with over 1% relative abundance was observed in the feces of infants consuming milk from Se+ or Se- mothers. Since infant age was between 2.5 and 5.5 months, we re-analyzed the relative abundance data by dividing the infants

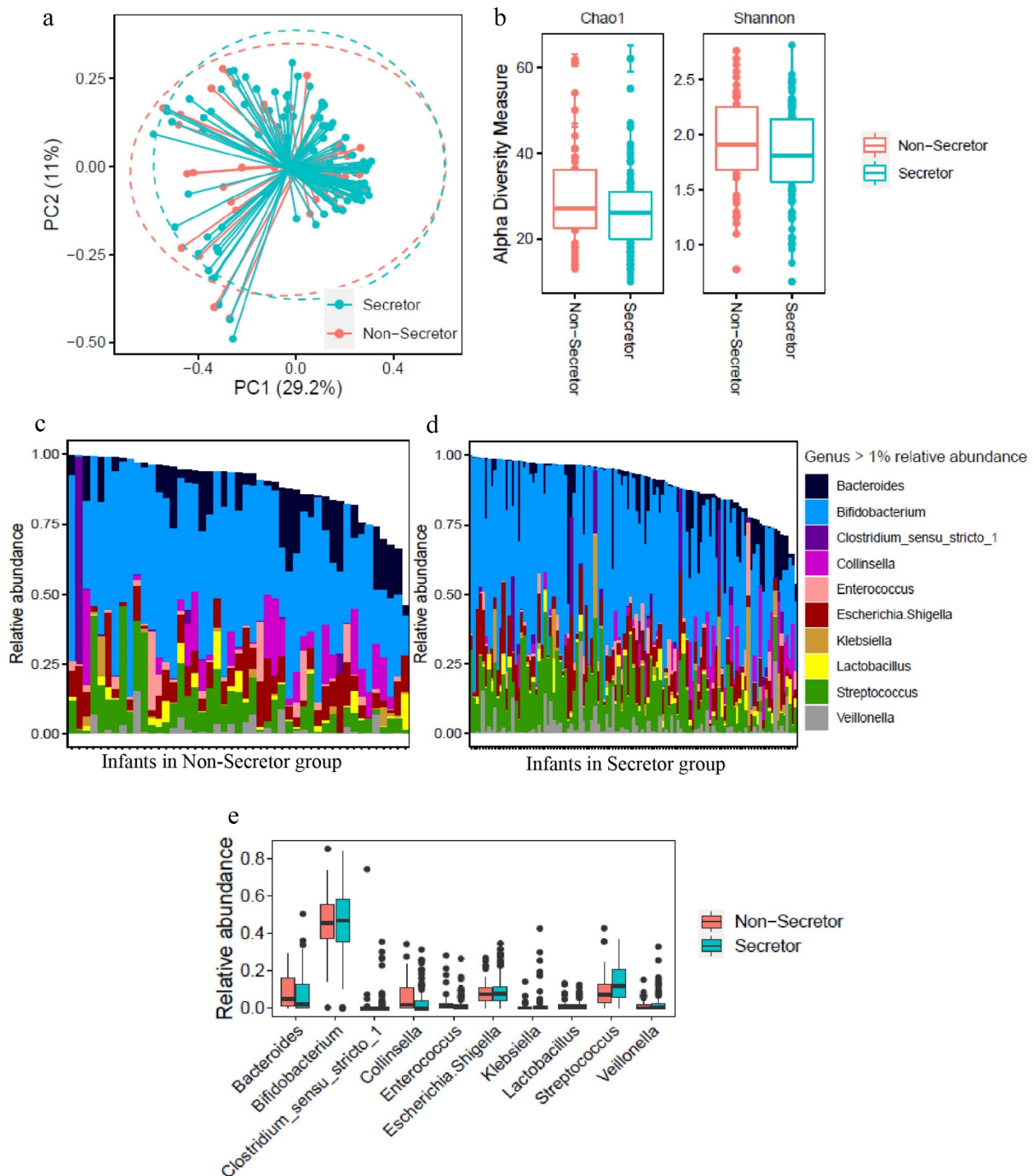


Figure 2. Comparison of fecal microbiome data in infants consuming secretor (cyan) or non-secretor (red) milk. (a) Analysis of beta-diversity using Principal coordinates analysis (PCoA) based on bray distance matrix data. The centroids of each cluster (centroid of mass) were calculated as the average PC1 and PC2 of all samples for each group. The ellipses were constructed based on multivariate normal distribution at 95% confidence level. (b) Analysis of alpha diversity represented as Chao1 and Shannon index. (c) The relative abundance of genera represented at a level of over 1% in the feces of infants consuming secretor milk. (d) The relative abundance of genera represented at a level of over 1% in the feces of infants consuming non-secretor milk.

into two age groups (younger or older than 3.75 months) ensuring an equal number of subjects between Se+ and Se- groups to see if age played a role (Supplementary Figure S2). While we observed more taxa at a relative abundance over 1% in infants at 3.75 months and older, no difference in genera were observed between infants consuming Se+ or Se- milk.

Quantified fecal metabolites (Supplementary Table S2) were examined to evaluate the impact of maternal secretor phenotypes on intestinal microbial fermentation products. PCoA of fecal metabolites showed no clear separation between infants of moms in the Se+ and Se- groups (Figure 3a). To determine if subtle differences in specific metabolites could be detected, fecal metabolites were compared using a combination of effect size (determined using Cliff's δ) and the Mann-Whitney U-test with FDR correction (Figure 3b). 2'FL, LDFT, and 1,2-propanediol were significantly higher in infant feces from the Se+ group compared to the Se- group ($p < .05$, with a small effect size ($0.16 < |\delta| < 0.32$)). Another HMO-related structure, N-acetylglucosamine (GlcNAc) was significantly lower in the Se+ group ($p = .05$, $\delta = 0.20$). Amino acids and related metabolites (glycine, pyroglutamate, 4-hydroxyphenylacetate, and 2-hydroxyisovalerate) were also significantly lower in the Se+ group ($p < .05$, $0.20 < \delta < 0.24$ for all), as was succinate and 2'-deoxyinosine ($p < .05$, $0.25 < \delta < 0.29$). To see if infant age (between 2.5 and 5.5 months) impacted

the fecal metabolome between the Se+ and Se- groups, we divided the infants into two age groups (younger or older than 3.75 months) ensuring an equal number of subjects in the Se+ and Se- groups, and approximately equal representation of males and females. No metabolites were significantly different between infants in the Se+ and Se- groups at either age assessed by the Mann-Whitney U-test with FDR correction, suggesting that a sample size < 30 is not powered enough to observe differences in the fecal metabolome between infants receiving Se+ milk and those receiving Se- milk. A forest plot showing Cliff's δ effect size (Supplementary Figure S3) comparing Se+ and Se- infants less than 3.75 months of age and greater than 3.75 months of age revealed similar differences as when comparing infants in the Se+ and Se- groups in the entire cohort (higher succinate, 2'-deoxyinosine, 4-hydroxyphenylacetate, 2-hydroxyisovalerate, glycine and pyroglutamate in infants in the Se- group and higher 2'-FL, 1,2-propanediol and LDFT in the Se+ group).

To further investigate the association between milk HMO, fecal microbiota, and the metabolome, Spearman correlations were conducted between fecal metabolites and milk HMOs, and between fecal metabolites and microbiome relative abundance data. Fecal 1,2-propanediol concentration, a fermentation byproduct shown to be produced by multiple *Bifidobacterium* species,¹⁹ was positively correlated with the concentration of total milk fucosylated HMOs in the Se- group ($p < .05$)

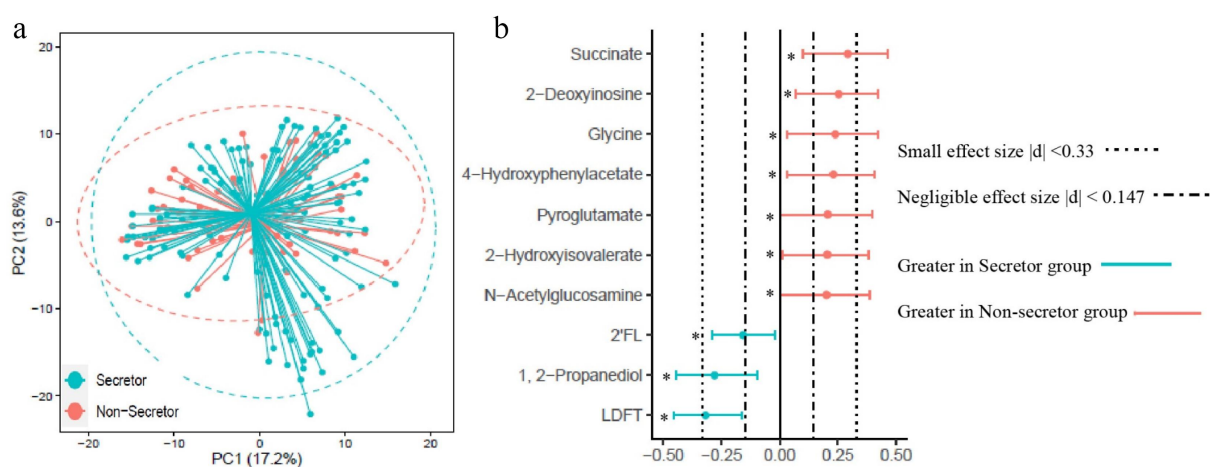


Figure 3. Comparison of infant fecal metabolome data in infants consuming secretor (cyan) or non-secretor (red) milk. (a) Principal coordinate analysis (PCoA) and (b) forest plot illustrating the Cliff's delta effect size analysis of individual metabolites. Metabolites with a $p < .05$ determined using the Mann-Whitney U-test with FDR correction are indicated with an asterisk.

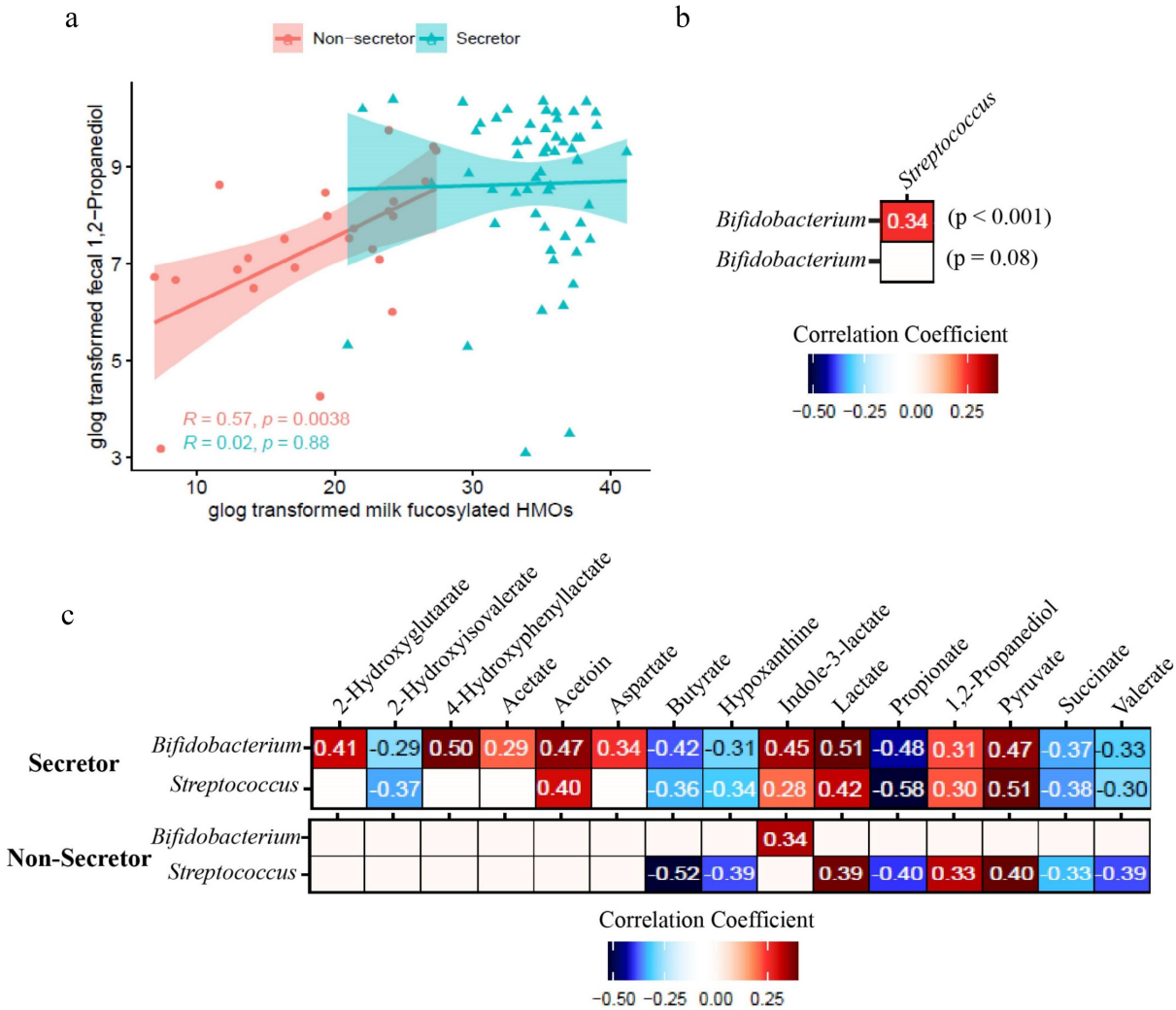


Figure 4. Correlation between the fecal microbiome and fecal metabolome of infants receiving secretor or non-secretor milk. (a) Association between total milk fucosylated HMO concentration in milk from secretor (cyan) and non-secretor (red) mothers and infant fecal 1, 2-propanediol concentrations. (b) Spearman correlation between bacterial taxa in the feces of infants consuming milk from secretor and non-secretor mothers. (c) Spearman correlation between fecal metabolites and the relative abundance of *Bifidobacterium* and *Streptococcus* of infants consuming milk from secretor and non-secretor mothers.

but not in the Se+ group (Figure 4a). Interestingly, no correlation between milk fucosylated HMOs and *Bifidobacterium* relative abundance was observed (data not shown). Since there was an unbalanced sample size, we re-analyzed the samples utilizing a similar number of subjects in the Se+ and Se- groups and a similar result was obtained (Supplementary Figure S4).

A positive correlation was observed between the relative abundance of *Bifidobacterium* and *Streptococcus* ($p < .001$) in infants in the Se+ group but not in the Se- group (Figure 4b). Interestingly, *Bifidobacterium* and *Streptococcus* had similar correlations with fecal metabolites in

the Se+ group but not in the Se- group (Figure 4c). In the Se+ group, the relative abundance of *Bifidobacterium* and *Streptococcus* was negatively correlated with several short chain fatty acids and organic acids including butyrate ($p < .001$), propionate ($p < .001$), valerate ($p < .001$), and succinate ($p < .001$), as well as the amino acid breakdown metabolite 2-hydroxyisovalerate ($p < .01$ for *Bifidobacterium* and $p < .001$ for *Streptococcus*) and a purine degradation metabolite, hypoxanthine ($p < .01$ for *Bifidobacterium* and $p < .001$ for *Streptococcus*). *Bifidobacterium* and *Streptococcus* relative abundances were both positively correlated with acetoin ($p < .001$),

indole-3-lactate ($p < .001$ for *Bifidobacterium* and $p < .05$ for *Streptococcus*), lactate ($p < .001$), 1,2-propanediol ($p < .001$ for *Bifidobacterium* and $p < .01$ for *Streptococcus*) and pyruvate ($p < .001$) in the Se+ group. *Bifidobacterium* relative abundance was also positively correlated with 4-hydroxyphenyllactate ($p < 0.001$), 2-hydroxyglutarate ($p < .001$), acetate ($p < .01$), and aspartate ($p < .001$) in the Se+ group. In the Se- group, *Bifidobacterium* relative abundance was positively correlated with indole-3-lactate ($p < 0.05$), whereas *Streptococcus* relative abundance was positively correlated with lactate ($p < .01$), 1,2-propanediol ($p < .05$), pyruvate ($p < .01$), and negatively correlated with butyrate ($p < .001$), hypoxanthine ($p < .01$) propionate ($p < .01$), succinate ($p < .05$), and valerate ($p < .01$).

Discussion

HMOs have been reported to have beneficial effects on infants through shaping infant gut microbial composition. Receiving Se+ milk has been reported to be positively associated with gut *Bifidobacterium* in some the US,¹⁰ Australian,¹² and Chinese infants,¹¹ not correlated with gut microbiota in some Finnish vaginally born,¹³ and Danish infants,¹⁴ and negatively associated with *Bifidobacterium* in some EBF US infants.¹⁵ One thing in common with all these studies is that reports of exclusive feeding were solely based on maternal self-report. Moreover, these studies mostly took place in resource-rich countries. Our study on EBF infants was performed in a rural setting in Indonesia, and exclusive breastfeeding was validated through the deuterium oxide DTM method. Here, no significant difference in gut microbiota between infants receiving Se+ and Se-milk based on results from PCoA (Figure 2a), alpha diversity measurement (Figure 2b), and comparison of microbial genera (Figure 2e) was observed.

We speculate that geographic and/or socioeconomic factors may play a role in how maternal secretor status shapes infant gut microbial composition and accommodation to the available HMOs entering the gut. Indeed, a difference in infant gut microbiome between WEIRD (western, educated, industrialized, rich, and democratic) societies and other parts of the world has recently drawn

attention. Specifically, a loss of highly specialized *Bifidobacterium* species in the infant gut and an increase in fecal pH have been recognized in resource-rich countries over the past century.²⁰ *Bifidobacterium longum* subsp. *infantis*, which has a complete capacity for HMO utilization, was found to be rare in US infants.²¹ Though without direct evidence, interventions such as provision of antibiotics and cesarean section have been speculated to be part of the reason causing the loss of this bacterial taxon.^{22,23} All infants in the present study were from a rural area in Indonesia, and the sample size reported here is much larger (160 infants) compared to previously published studies (22 to 76 infants).⁹⁻¹⁴

Although no difference in the genus level from the 16s rRNA gene sequencing results was observed, there could be a shift of *Bifidobacterium* at the species level due to the difference in HMO profile (Figure 1a-g). Different species of *Bifidobacterium* have been reported to have different capability and preference for utilizing HMOs.²⁴ For instance, several *Bifidobacterium* subspecies (including *Bifidobacterium longum* subsp. *infantis*, *Bifidobacterium longum* subsp. *suis* BSM11-5, and *Bifidobacterium kashiwanohense*) have been reported to grow in the presence of 2'FL and 3FL,¹⁹ whereas *Bifidobacterium breve* KA179 was reported to grow on 2'FL but not on 3FL.²⁵ The difference in concentration of 1,2-propanediol in infant feces (Figure 3b) between infants consuming milk from Se+ or Se- mothers suggests that there are differences at the species and strain levels of *Bifidobacterium*. 1,2-Propanediol has been reported to be produced by *Bifidobacterium longum* subsp. *infantis* and *Bifidobacterium longum* subsp. *suis* BSM11-5 but not by *Bifidobacterium kashiwanohense* DSM 21854 when grown on 2'FL and 3FL.^{19,26,27} The higher level of 1,2-propanediol in the feces of infants fed Se+ milk is likely a result of colonization of *Bifidobacterium* species that can produce 1,2-propanediol from 2'FL. Importantly, *Bifidobacterium* was positively correlated with 1,2-propanediol in infants fed milk from Se+ mothers but not Se- mothers (Figure 4c).

It is worth noting that 1,2-propanediol was still present in the feces of infants fed milk from Se-mothers. This could be attributed to species such as *B. longum* subsp. *suis* BSM11-5 which synthesize

1,2-propanediol mainly from 3FL when given both 2'FL and 3FL.¹⁹ Furthermore, 1,2-propanediol showed a positive correlation with fucosylated HMOs in the Se- group but not in the Se+ group (Figure 4a). This suggests that the production of 1,2-propanediol arises from the fermentation of fucosylated HMOs and that the production may be slower when 2'FL is not present. Once a certain amount of 1,2-propanediol is produced, it could be that a "steady-state" is reached. Whether this "steady state" is due to increased absorption or utilization by other microbes remains to be studied.²⁸

A lower level of succinate as well as amino acids and related metabolites (glycine, pyroglutamate, 4-hydroxyphenylacetate, and 2-hydroxyisovalerate) (Figure 3b) in the feces of infants fed Se+ milk may suggest a shift in carbohydrate and amino acid fermentation. There were no significant differences in fecal organic acids associated with colonic pH (other than succinate), so it is unlikely that there are differences in stool pH between the groups (although this was not specifically measured). Lower overall levels of fucosylated HMOs in the milk could lead to slight changes in the fermentative capacity of the microbiome, and thus slight changes in the abundance of certain bacterial taxa resulting in the differences observed here. Higher fecal succinate has been associated with inflammatory bowel disease (IBD),²⁹ and succinate accumulation has been attributed to changes in the abundance of succinate-consuming gut microbes.³⁰ One study suggested that higher succinate in the neonate may favor the colonization of strict anaerobes.³¹ The potential impact of succinate in the neonatal gut on infant health needs further study.

Breastfeeding has been reported to decrease respiratory infection in both infancy and childhood,^{32,33} with the benefit attributed to the antiadhesive function of HMOs.³⁴ 2'FL and lacto-N-neotetraose (LNnT) supplemented infant formula was shown to decrease the risk of lower respiratory tract infection in infants,³⁵ and 2'FL was shown to be the most effective HMO in decreasing respiratory syncytial virus load and cytokines in epithelial cells when compared to 3FL, 6'-sialyllactose (6'SL) and other oligosaccharides.³⁶ In this study, cough was more common in infants fed Se- milk (34.0%)

compared to infants fed Se+ milk (14.2%) ($p = .004$, chi-square test) (Table 1).

A positive association between *Bifidobacterium* and *Streptococcus* (Figure 4b) and a similar trend of correlation with fecal metabolites between the two microbes (Figure 4c) in the Se+ group indicate that there could be crosstalk between these two microbial taxa in infants fed Se+ milk. A previous study reported a synergistic effect between *Bifidobacterium lactis* and *Streptococcus thermophilus* when cultured in skim milk, and such positive mutual interaction was further improved by inulin due to its prebiotic and bifidogenic function.³⁷ Specifically, better growth of both organisms was observed in co-culture compared to pure cultures, and the increase in the biomass of the two microbes was larger in the presence of inulin.³⁷ In the present study, Se+ associated HMOs may act as prebiotics favoring the growth of certain species of *Bifidobacterium* and *Streptococcus* that have a synergistic relationship. Indeed, we previously showed that *Streptococcus* is one of the core fecal taxa in infants during the exclusive feeding period between 2 and 6 months of age.³⁸

The positive correlation between *Bifidobacterium* and 4-hydroxyphenyllactate in the Se+ group but not in the Se- group further delineates differences at the species and strain level of *Bifidobacterium* between the two groups. 4-Hydroxyphenyllactate, a tyrosine metabolite, has been shown to be produced by *Bifidobacterium in vitro*.^{39,40} A recent study showed that 4-hydroxyphenyllactate was primarily produced by *Bifidobacterium* species that utilize HMOs including *Bifidobacterium bifidum*, *Bifidobacterium breve*, *Bifidobacterium longum* subsp. *longum*, *Bifidobacterium longum* subsp. *infantis* and *Bifidobacterium sardovii* via aromatic lactate dehydrogenase.⁴¹ Other *Bifidobacterium* species such as *Bifidobacterium adolescentis* and *Bifidobacterium pseudocatenulatum* have not been observed to produce 4-hydroxyphenyllactate.⁴¹ Interestingly, the fecal concentration of 4-hydroxyphenyllactate was not significantly different between infants from Se+ and Se- mothers, which suggests that other bacterial species may be creating this compound. Indeed, 4-hydroxyphenyllactate has been shown to be produced by other microbes including *Lactobacillus fermentum* and *Eubacterium lentum*.³⁹

Bifidobacteria have been reported to be capable of producing lactate,^{37,42} and their ability to produce lactate could be affected by the availability of different HMOs. Specifically, *Bifidobacterium longum* JCM 1260, JCM 7011, and JCM 7009 produce lactate in the presence of 2'FL but not 3FL.⁴³ This could shed light on the presence of the positive correlation between *Bifidobacterium* and lactate in the Se+ group but not in the Se- group. The utilization of lactate by microbes such as *Veillonella* in the infant gut could also be a contributing factor. *Streptococcus thermophilus* ATCC19258, a common human gut microbe, was reported to utilize either 2'FL or 3FL to produce lactate.⁴³ This could explain the positive association between *Streptococcus* and lactate in both the Se+ and Se- groups.

The tryptophan metabolite indole-3-lactate has been shown to be produced by *Bifidobacterium longum* subsp. *infantis* in the presence HMOs.⁴⁴ However, the production of indole-3-lactate is not necessarily dependent on the presence of HMOs, as multiple *Bifidobacterium* species (including *Bifidobacterium longum* subsp. *longum*, *Bifidobacterium longum* subsp. *infantis*, *Bifidobacterium breve*, and *Bifidobacterium bifidum*) are able to produce indole-3-lactate when cultured in DeMan, Rogosa and Sharpe (MRS) medium.⁴⁵ This could explain the presence of the positive association between *Bifidobacterium* in general (Figure 4c) and indole-3-lactate in both Se+ and Se- groups, and a similar concentration of fecal indole-3-lactate between the two groups. Indole-3-lactate has been reported to be anti-inflammatory,⁴⁴ and has been shown to be negatively correlated with calprotectin in premature infant feces.⁴⁶

The results obtained in the present study show the impact of maternal secretor status on infant gut microbial composition and their fermentation capability. Distinct HMO profiles between breast milk from Se+ and Se- women were confirmed. Though previous studies have reported differences in infant microbial composition when consuming Se+ milk and Se- milk,^{8–11} no significant difference in the infant gut microbiome based on 16s sequencing was observed in this study, indicating that there could be differences at the species and strain level, and further that there may be other factors playing a role in shaping the gut microbiome and its function.

One limitation of the current study is that the secretor status of the infants was not measured. Studies have reported that being a Se- infant was associated with resistance against diarrhea prevalence and norovirus.^{47,48} Therefore, information on the secretor status of both mothers and the infants could provide a better understanding of how HMOs function to protect infants. Future studies should also investigate the microbiome with higher resolution to evaluate specific species and strains of *Bifidobacterium* and study the interaction of *Bifidobacterium* and *Streptococcus* at the species or strain level.

Materials and methods

The current study included a total of 160 mother–infant pairs with infant postnatal age from 2 to 5.5 months from the Sumedang district in the province of West Java, Indonesia. The inclusion criteria for infants included gestational age and health status and was described in a previous study.⁴⁹ The anthropometric and morbidity status of the mothers and their infants were measured as described previously.⁵⁰ Ethical approval for the study was granted by the University of Otago Human Research Ethics Committee New Zealand (H15/125) and the Health Research Ethics Committee Faculty of Medicine Universitas Padjadjaran, Bandung (081/UN6.C1.3.2/KEPK/PN/2016), Indonesia.

Breastfeeding status determination

The determination of the EBF status was based on the dose-to-mother (DTM) method described previously.^{49,50} Briefly, mothers were provided a dose of deuterium oxide, and saliva samples were collected from mother–infant pairs over the course of 14 days. Using these data, infant daily water intake from sources other than breastmilk was calculated and then compared to a cut-off value of 86.6 g/d to classify EBF status over the 14-day collection period.⁴⁹

Breast milk sample collection and metabolite extraction

Full expression of morning milk samples was collected using breast pumps (Harmony, Medela,

Baar, Switzerland) after instructing the mothers to take strict precautions to avoid all sources of contamination. After gentle mixing and aliquoting, milk samples were stored at -80°C until analysis.

For metabolomics analysis, milk samples were thawed on ice, vortexed, and centrifuged at 12k rcf, at 4°C for 5 min to separate milk lipids. A total of 350 μL of the aqueous phase was transferred to a pre-washed 3 kDa Amicon filter (Amicon ultra centrifugal filter, Millipore, Billerica, MA) to remove lipids and proteins. To 207 μL of filtrate, 23 μL of internal standard (5 mM 3-(trimethylsilyl)-1-propanesulfonic acid-d6 (DSS-d6) in 99.8% D_2O (to serve as a lock) and 0.2% NaN_3 (to inhibit bacterial growth)) was added. To minimize pH-based peak movement in the NMR spectra, the pH of each sample was adjusted to 6.85 ± 0.07 by adding small amounts of NaOH or HCl. A total of 180 μL of the mixture was transferred to 3 mm Bruker NMR tubes (Bruker, Billerica, MA) and stored at 4°C until spectral acquisition.

Fecal sample collection and metabolite extraction

Fresh fecal samples from infants were collected into Eppendorf tubes directly from the nappy and stored at -80°C until analysis. To prepare for microbiome and metabolome analysis, fecal samples were thawed on ice, and fecal metabolites were extracted as previously described.³⁸ Briefly, 250 mg of fecal material was combined with 1.5 mL of ice-cold Dulbecco's phosphate buffered saline (DPBS, 1X, pH 7.4) for metabolite extraction. After vortexing and centrifugation (14 k rcf, 4°C , for 5 min), the supernatant was filtered through a syringe filter (0.22 μm pore size, Millex-GP syringe filter, Millipore, Billerica, MA) followed by an Amicon filter (3 kDa). Samples were prepared as above for NMR analysis. The pellet was collected and saved at 4°C for DNA extraction (described below).

To estimate the water content of each sample, approximately 75 mg of feces was weighed into a 2 mL screw-cap tube and lyophilized (Labconco FreeZone 4.5 L Freeze Dry System, Labconco, Kansas City, MO). The weight of the tube was analytically determined before and after drying and used below for calculating the amount of water in the extracted sample.

NMR acquisition, data processing, and quantification

^1H NMR spectra were acquired at 298 K using a NOESY ^1H presaturation experiment ('noesypr1d') on a Bruker Avance 600 MHz NMR spectrometer (Bruker BioSpin, Germany) equipped with a SampleJet autosampler (Bruker BioSpin, Germany) as previously described.³⁸ After manual phasing and baseline correction in Chenomx processor, a total of 97 fecal metabolites (Supplementary Table S2) were quantified using Chenomx Profiler (Chenomx NMR Suite v8.3, Chenomx Inc, Edmonton, Alberta, Canada) based on the established method of targeted profiling.⁵¹ The resulting metabolite concentrations were corrected based water content as described in our previous study,³⁸ where fecal water estimate was calculated for each sample as follows:

$$\text{Fecal water estimate} = \left(1 - \frac{\text{Dry weight}}{\text{Wet weight}}\right) \times \text{Weight of extracted sample} \quad (1)$$

Milk secretor status phenotype determination and oligosaccharide quantification

Milk secretor status determination was based on the presence or near absence of 2'FL in the NMR spectra of human milk (Supplementary Table S1), which was identified and quantified from an NMR spectral library created through the analytical preparation of commercially available HMO standards as previously described.^{1,18} Annotation of human milk oligosaccharides in NMR spectra of human milk has been previously reported.^{18,52,53} A figure comparing NMR spectra of Se+ and Se- milk together with spectra of pure oligosaccharide standards is shown in Supplementary Figure S1. For the determination of the secretor phenotype, the identification of 2'FL was accomplished through identifying a combination of the methyl peaks from the fucose ring centered at 1.22 ppm combined with a set of peaks at 5.30 ppm. Information on peaks used to quantify other oligosaccharides is provided in the legend to Supplementary Figure S1. In this study, when $[2'FL] \geq 200 \mu\text{M}$, milk secretor status

was assigned as Se+, while milk samples with [2'FL] <200 µM were assigned as Se-.

Fecal microbial DNA extraction and library preparation

The pellet of each fecal sample from above was used for DNA extraction according to the Human Microbiome Project (HMP) protocol with minor modifications using the MoBio PowerLyzer PowerSoil DNA isolation kit (MoBio, Carlsbad, CA).^{38,54} DNA purity was determined spectrophotometrically using a NanoDrop 2000C Spectrophotometer (Thermo Fisher Scientific, Waltham, MA, USA). One negative control sample using PCR-grade water (MoBio, Carlsbad, CA) was prepared for each batch.

The V4 hypervariable region of the 16S rRNA gene was targeted using a two-step PCR protocol. In step 1, the V4 region was amplified using F515/R806 primers modified to contain an Illumina overhang sequence and a 0–5 bp spacer on the 5' end. The modified F515 forward primer sequence was as follows: 5'-TCGTCGGCAGCGTCAGATGTGTATAAGAGACAG[*spacer*]GTGCCAGCMGCCGCGGTAA-3', and the modified R806 reverse primer sequence was as follows: 5'-GTCTCGTGGGCTCGGAGATGTGTATAAGAGACAG[*spacer*]GGACTACHVGGGTWCTAAT-3'. Before PCR, the forward and reverse primers were diluted to 10 µM. The PCR reactions were performed in 15 µL reaction volumes containing 4 µL DNA template, 0.75 µL DMSO (Fisher Scientific, Waltham, MA), 3 µL 5X KAPA HiFi Buffer (KAPA Biosystems, Woburn, MA), 0.45 µL dNTP Mix (10 mM), 0.3 µL KAPA HiFi HotStart Polymerase (KAPA Biosystems, Woburn, MA), 5.7 µL PCR-grade water (MoBio, Carlsbad, CA), and primers (0.4 µL for each). The amplified DNA products in this step were diluted 1:10 using PCR water and mixed well. In step 2, an 8 bp index was used to multiplex the samples in both the forward and reverse primers. The forward indexing primer sequence was as follows: AATGATACGGCGACCACCGAGATCTACACX-XXXXXXXXTCGTCGGCAGCGTC, and the reverse indexing primer sequence was as follows: CAAGCAGAAGACGGCATACGAGATXXXXXXXXXXGTCTCGTGGGCTCGG (X indicates the positions of the 8-bp indices). The indexing primers were diluted to 5 µM before using. The PCR

reactions were performed in duplicate in 20 µL reaction volumes containing 1 µL diluted DNA template from step 1, 1 µL DMSO (Fisher Scientific, Waltham, MA), 1 µL 5X KAPA HiFi Buffer (KAPA Biosystems, Woburn, MA), 0.6 µL dNTP Mix (10 mM), 0.4 µL KAPA HiFi HotStart Polymerase (KAPA Biosystems, Woburn, MA), 9 µL PCR-grade water (MoBio, Carlsbad, CA), and primers (2 µL for each). In both steps 1 and 2, the PCR reactions consisted of an initial denaturation at 95°C for 5 min followed by a 10-cycle program of 20 s at 98°C for denaturation, 15 s at 55°C for annealing, 60 s at 72°C for primer extension and a final extension of 72°C for 10 min.

Amplified PCR products from step 2 were quality checked by gel electrophoresis. The band intensity (around 430 bp) was visualized using SYBR safe DNA stain (Invitrogen), and its quantity (in ng/µL) was estimated using a molecular ladder with known concentration (BioRad EZ ladder 1 kb) through ImageLab software (v5.2.1, BioRad, Hercules, CA). Amplicons were pooled in equimolar ratios and purified using the QIAquick PCR Purification Kit (QIAGEN, Hilden, Germany) using a modified protocol from the manufacturer's instruction. A purified amplicon library was quality checked by Bioanalyzer and submitted to the UC Davis Genome Center DNA Technologies Core for 300 bp paired-end sequencing on the Illumina MiSeq platform.

Analysis of 16s amplicon sequence

Sequencing reads were demultiplexed by the UC Davis Genome center DNA Technologies Core after sequencing based on the index sequences provided upon library submission. Sequence reads without a corresponding barcode and primer sequence were discarded. Spacers and the V4 region primers were removed using the *cutadapt* function in *cutadapt* module (version 1.8.3). Reads were then split into forward (R1) and reverse (R2) reads before feeding into the *fastqc* and *multiqc* function to evaluate reading quality. DADA2 (version 1.12.1) was then used to filter, trim, merge reads and assign taxonomy. Briefly, forward and reverse reads were trimmed to 200 and 150 bases with a maxEE of 2, respectively. After error rate learning and sample inference, paired reads were merged, and sequences with a length between 250 and 258 bp were kept.

Taxonomy was assigned using the SILVA 16S rRNA database version 138 formatted for DADA2.^{55,56,57} The ASV table and taxonomy table were then exported from the DADA2 pipeline for further analysis in R (version 4.0.3).

Statistical analysis

Statistical analyses and graphical generation were performed using the R programming environment version 4.0.3. The ASV table generated from the DADA2 pipeline was used to calculate the relative abundance of each genus and α -diversity matrices using the *phyloseq* package. The generalized log transformation (defined as $\log(y + 1)$) was applied to all metabolomics data.

The infant length-for-age z-score (LAZ), weight-for-age z-score (WAZ), weight-for-length z-score (WLZ), and infant body-mass-index-for-age z-score (BMIZ) were calculated using the *anthro* package from the CRAN repository.

Principal coordinate analysis (PCoA) of microbiome data was computed using the *pcor* package based on the Bray distance, while PCoA of metabolome data was done based on Euclidean distances. The centroids of each cluster (centroid of mass) were calculated as the average of PC1 and PC2 for each group. The ellipses were constructed based on a multivariate normal distribution at a 95% confidence level.

Differential analysis for the microbiome was computed at the genus level using analysis of composition of microbiomes (ANCOM), and infant age was set as a covariate. The false discovery rate (FDR) was controlled using the Benjamini–Hochberg procedure. For metabolomics data, the significance between secretor status was evaluated using the Mann–Whitney Test (*wilcox.test* function) and p-values from the Mann–Whitney test were then adjusted for FDR (*p.adjust(method = fdr)*). The overall level of significance was set at $p < .05$.

The *cliff.delta* function from the *effsize* package was used to evaluate the effect size between the Se+ and Se- group using Cliff's delta (δ) statistics. The 95% confidence interval of each computed Cliff's delta was further estimated. The threshold of negligible, small, and large δ were assessed according to Romano *et al.*⁵⁸ where $|\delta| < 0.147$ corresponds to

negligible, $0.147 < |\delta| < 0.33$ corresponds to small, $0.33 < |\delta| < 0.474$ corresponds to medium, and $|\delta| > 0.474$ large effect sizes.

The Spearman correlation coefficient (R) was computed using *cor(method = "spearman")* to evaluate the strength of correlations. All plots were generated using *ggplot2*.

Disclosure statement

The authors declare that the research was conducted in the absence of any commercial or financial relationships that could be construed as a potential conflict of interest.

Funding

This research was funded by the Bill & Melinda Gates Foundation (Grant No. OPP1127870). CMS would like to acknowledge support from the USDA National Institute of Food and Agriculture Hatch Project 1021411, and the Kinsella Endowed Chair in Food, Nutrition, and Health.

ORCID

Carolyn M Slupsky  <http://orcid.org/0000-0002-5100-1594>

Author contributions

LAH, AD, and RSG designed the larger research study; AD and SR conducted the field research; AW and CMS designed the research, analyzed, and interpreted the data herein. AW drafted the manuscript. All authors edited and approved the manuscript.

Abbreviations

HMO: human milk oligosaccharides, FUT2: α -1,2-fucosyltransferase 2, FUT1: α -1,2-fucosyltransferase 1, LNFP I: lacto-N-fucopentose I, LNFP II: lacto-N-fucopentose II, LNFP III: lacto-N-fucopentose III, LDFT: lactodifucotetraose, 2'FL: 2'fucosyllactose, 3FL: 3-fucosyllactose, LNnT: lacto-N-neotetraose, GlcNAc: N-Acetylglucosamine, EBF: exclusively breastfed, ASVs: amplicon sequence variants, DTM: dose-to-mother, SCFAs: short chain fatty acids, Se+: secretor, Se-: non-secretor, PCoA: Principal coordinate analysis, FDR: false discovery rate, ANCOM: analysis of composition of microbiomes, BMI: body mass index, LAZ: length-for-age z-score, WAZ: weight-for-age z-score, WLZ: weight-for-length z-score, BMIZ: BMI-for-age index, WEIRD: western, educated, industrialized, rich, and democratic

Data availability statement

Metabolome data are available as supplementary tables. Sequencing data are available at Dryad: <https://datadryad.org/stash/share/tMOWGLIvAJo2yx4QrfCyRxexwL6ewSixWF-sNm74soo>. ((doi:10.25338/B8V93G))

References

- Smilowitz JT, O'Sullivan A, Barile D, German JB, Lönnerdal B, Slupsky CM. The human milk metabolome reveals diverse oligosaccharide profiles. *J Nutr.* 2013;143(11):1709–1718. doi:10.3945/jn.113.178772.
- Spevacek AR, Smilowitz JT, Chin EL, Underwood MA, German JB, Slupsky CM. Infant maturity at birth reveals minor differences in the maternal milk metabolome in the first month of lactation. *J Nutr.* 2015;145(8):1698–1708. doi:10.3945/jn.115.210252.
- Azad MB, Robertson B, Atakora F, Becker AB, Subbarao P, Moraes TJ, Mandhane PJ, Turvey SE, Lefebvre DL, Sears MR, et al. Human milk oligosaccharide concentrations are associated with multiple fixed and modifiable maternal characteristics, environmental factors, and feeding practices. *J Nutr.* 2018;148(11):1733–1742. doi:10.1093/jn/nxy175.
- Durham SD, Robinson RC, Olga L, Ong KK, Chichlowski M, Dunger DB, Barile D. A one-year study of human milk oligosaccharide profiles in the milk of healthy UK mothers and their relationship to maternal FUT2 genotype. *Glycobiology.* 2021;31(10):1254–1267. doi:10.1093/glycob/cwab057.
- Thurl S, Munzert M, Henker J, Boehm G, Müller-Werner B, Jelinek J, Stahl B. Variation of human milk oligosaccharides in relation to milk groups and lactational periods. *Br J Nutr.* 2010;104(9):1261–1271. doi:10.1017/S0007114510002072.
- Totten SM, Zivkovic AM, Wu S, Ngyuen U, Freeman SL, Ruhaak LR, Darboe MK, German JB, Prentice AM, Lebrilla CB, et al. Comprehensive profiles of human milk oligosaccharides yield highly sensitive and specific markers for determining secretor status in lactating mothers. *J Proteome Res.* 2012;11(12):6124–6133. doi:10.1021/pr300769g.
- Newburg DS, Ruiz-Palacios GM, Morrow AL. Human milk glycans protect infants against enteric pathogens. *Annu Rev Nutr.* 2005;25(1):37–58. doi:10.1146/annurev.nutr.25.050304.092553.
- Kunz C, Meyer C, Collado MC, Geiger L, García-Mantrana I, Bertua-Ríos B, Martínez-Costa C, Borsch C, Rudloff S. Influence of gestational age, secretor, and Lewis blood group status on the oligosaccharide content of human milk. *J Pediatr Gastroenterol Nutr.* 2017;64(5):789–798. doi:10.1097/MPG.0000000000001402.
- Underwood MA, Gaerlan S, De Leoz MLA, Dimapasoc L, Kalanetra KM, Lemay DG, German JB, Mills DA, Lebrilla CB. Human milk oligosaccharides in premature infants: absorption, excretion, and influence on the intestinal microbiota. *Pediatr Res.* 2015;78(6):670. doi:10.1038/pr.2015.162.
- Lewis ZT, Totten SM, Smilowitz JT, Popovic M, Parker E, Lemay DG, Van Tassell ML, Miller MJ, Jin Y-S, German JB, et al. Maternal fucosyltransferase 2 status affects the gut bifidobacterial communities of breastfed infants. *Microbiome.* 2015;3(1):13. doi:10.1186/s40168-015-0071-z.
- Bai Y, Tao J, Zhou J, Fan Q, Liu M, Hu Y, Xu Y, Zhang L, Yuan J, Li W, et al. Fucosylated human milk oligosaccharides and N-glycans in the milk of Chinese mothers regulate the gut microbiome of their breast-fed infants during different lactation stages. *mSystems.* 2018;3(6):e00206–18. doi:10.1128/mSystems.00206-18.
- Smith-Brown P, Morrison M, Krause L, Davies PSW. Mother's secretor status affects development of children's microbiota composition and function: a pilot study. *PloS One.* 2016;11(9):e0161211. doi:10.1371/journal.pone.0161211.
- Korpela K, Salonen A, Hickman B, Kunz C, Sprenger N, Kukkonen K, Savilahti E, Kuitunen M, de Vos WM. Fucosylated oligosaccharides in mother's milk alleviate the effects of caesarean birth on infant gut microbiota. *Sci Rep.* 2018;8(1):13757. doi:10.1038/s41598-018-32037-6.
- Laursen MF, Pekmez CT, Larsson MW, Lind MV, Yonemitsu C, Larnkjær A, Mølgaard C, Bode L, Dragsted LO, Michaelsen KF, et al. Maternal milk microbiota and oligosaccharides contribute to the infant gut microbiota assembly. *ISME Commun.* 2021;1(1):21. doi:10.1038/s43705-021-00021-3.
- Wang M, Li M, Wu S, Lebrilla CB, Chapkin RS, Ivanov I, Donovan SM. Fecal microbiota composition of breast-fed infants is correlated with human milk oligosaccharides consumed. *J Pediatr Gastroenterol Nutr.* 2015;60(6):825–833. doi:10.1097/MPG.0000000000000752.
- Medoua GN, Sajo Nana EC, Ndzana ACA, Makamto CS, Etame LS, Rikong HA, Oyono JLE. Breastfeeding practices of Cameroonian mothers determined by dietary recall since birth and the dose-to-the-mother deuterium-oxide turnover technique. *Matern Child Nutr.* 2012;8(3):330–339. doi:10.1111/j.1740-8709.2011.00293.x.
- Mazariegos M, Slater C, Ramirez-Zea M. Validity of Guatemalan mother's self-reported breast-feeding practices of 3-month-old infants. *Food Nutr Bull.* 2016;37(4):494–503. doi:10.1177/0379572116654644.
- Wang A, Koleva P, du Toit E, Geddes DT, Munblit D, Prescott SL, Eggesbø M, Johnson CC, Wegienka G, Shimojo N, et al. The milk metabolome of non-secretor and Lewis negative mothers. *Front Nutr.* 2021;7:576966. doi:10.3389/fnut.2020.576966.
- Bunesova V, Lacroix C, Schwab C. Fucosyllactose and L-fucose utilization of infant *Bifidobacterium longum* and *Bifidobacterium kashiwanohense*. *BMC Microbiol.* 2016;16(1):248. doi:10.1186/s12866-016-0867-4.

20. Henrick BM, Hutton AA, Palumbo MC, Casaburi G, Mitchell RD, Underwood MA, Smilowitz JT, Frese SA. Elevated fecal pH indicates a profound change in the breastfed infant gut microbiome due to reduction of *Bifidobacterium* over the past century. *mSphere*. 2018;3(2):e00041–18. doi:10.1128/mSphere.00041-18.
21. Casaburi G, Duar RM, Brown H, Mitchell RD, Kazi S, Chew S, Cagney O, Flannery RL, Sylvester KG, Frese SA, et al. Metagenomic insights of the infant microbiome community structure and function across multiple sites in the United States. *Sci Rep*. 2021;11(1):1472. doi:10.1038/s41598-020-80583-9.
22. Duranti S, Lugli GA, Mancabelli L, Turrone F, Milani C, Mangifesta M, Ferrario C, Anzalone R, Viappiani A, van Sinderen D, et al. Prevalence of antibiotic resistance genes among human gut-derived bifidobacteria. *Appl Environ Microbiol*. 2017;83(3). doi:10.1128/AEM.02894-16.
23. Betrán AP, Ye J, Moller AB, Zhang J, Gülmezoglu AM, Torloni MR, Zeeb H. The increasing trend in caesarean section rates: global, regional and national estimates: 1990-2014. *PloS One*. 2016;11(2):e0148343. doi:10.1371/journal.pone.0148343.
24. Underwood MA, German JB, Lebrilla CB, Mills DA. *Bifidobacterium longum* subspecies *infantis*: champion colonizer of the infant gut. *Pediatr Res*. 2014;77(1–2):229. doi:10.1038/pr.2014.156.
25. Ruiz-Moyano S, Totten SM, Garrido DA, Smilowitz JT, German JB, Lebrilla CB, Mills DA. Variation in consumption of human milk oligosaccharides by infant gut-associated strains of *Bifidobacterium breve*. *Appl Environ Microbiol*. 2013;79(19):6040–6049. doi:10.1128/AEM.01843-13.
26. Zabel B, Yde CC, Roos P, Marcussen J, Jensen HM, Salli K, Hirvonen J, Ouwehand AC, Morovic W. Novel genes and metabolite trends in *Bifidobacterium longum* subsp. *infantis* bi-26 metabolism of human milk oligosaccharide 2'-fucosyllactose. *Sci Rep*. 2019;9(1):7983. doi:10.1038/s41598-019-43780-9.
27. Dedon LR, Özcan E, Rani A, Sela DA. *Bifidobacterium infantis* metabolizes 2'-fucosyllactose-derived and free fucose through a common catabolic pathway resulting in 1,2-propanediol secretion. *Front Nutr*. 2020;7:237. doi:10.3389/fnut.2020.583397.
28. Cheng CC, Duar RM, Lin X, Perez-Munoz ME, Tollenaar S, Oh J-H, van Pijkeren J-P, Li F, van Sinderen D, Gänzle MG, et al. Ecological importance of cross-feeding of the intermediate metabolite 1,2-propanediol between bacterial gut symbionts. *Appl Environ Microbiol*. 2020;86(11):e00190–20. doi:10.1128/AEM.00190-20.
29. Ariake K, Ohkusa T, Sakurazawa T, Kumagai J, Eishi Y, Hoshi S, Yajima T. Roles of mucosal bacteria and succinic acid in colitis caused by dextran sulfate sodium in mice. *J Med Dent Sci*. 2000;47:233–241.
30. Morgan XC, Tickle TL, Sokol H, Gevers D, Devaney KL, Ward DV, Reyes JA, Shah SA, LeLeiko N, Snapper SB, et al. Dysfunction of the intestinal microbiome in inflammatory bowel disease and treatment. *Genome Biol*. 2012;13(9):R79. doi:10.1186/gb-2012-13-9-r79.
31. Kim YG, Sakamoto K, Seo SU, Pickard JM, Gilliland MG, Pudlo NA, Hoostal M, Li X, Wang TD, Feehley T, et al. Neonatal acquisition of *Clostridia* species protects against colonization by bacterial pathogens. *Sci*. 2017;356(6335):315. doi:10.1126/science.aag2029.
32. Raheem RA, Binns CW, Chih HJ. Protective effects of breastfeeding against acute respiratory tract infections and diarrhoea: findings of a cohort study. *J Paediatr Child Health*. 2017;53(3):271–276. doi:10.1111/jpc.13480.
33. Tromp I, Kiefte-de Jong J, Raat H, Jaddoe V, Franco O, Hofman A, de Jongste J, Moll H. Breastfeeding and the risk of respiratory tract infections after infancy: the generation R study. *PloS One*. 2017;12(2):e0172763. doi:10.1371/journal.pone.0172763.
34. Stepan MBF, Wilhelm SL, Hertzog M, Rodehorst TKC, Blaney S, Clemens B, Polak JJ, Newburg DS. Early consumption of human milk oligosaccharides is inversely related to subsequent risk of respiratory and enteric disease in infants. *Breastfeed Med Off J Acad Breastfeed Med*. 2006;1(4):207–215. doi:10.1089/bfm.2006.1.207.
35. Puccio G, Alliet P, Cajozzo C, Janssens E, Corsello G, Sprenger N, Wernimont S, Egli D, Gosoni L, Steenhout P, et al. Effects of infant formula with human milk oligosaccharides on growth and morbidity: a randomized multicenter trial. *J Pediatr Gastroenterol Nutr*. 2017;64(4):624–631. doi:10.1097/MPG.0000000000001520.
36. Duska-McEwen G, Senft AP, Ruetschilling TL, Barrett EG, Buck RH. Human milk oligosaccharides enhance innate immunity to respiratory syncytial virus and influenza *in vitro*. *Food Nutr Sci*. 2014;5:1387–1398. doi:10.4236/fns.2014.514151.
37. de Souza Oliveira RP, Perego P, de Oliveira MN, Converti A. Growth, organic acids profile and sugar metabolism of *Bifidobacterium lactis* in co-culture with *Streptococcus thermophilus*: the inulin effect. *Food Research International* query. 2012;48(1):21–27. doi:10.1016/j.foodres.2012.02.012.
38. He X, Parenti M, Grip T, Lönnerdal B, Timby N, Domellöf M, Hernell O, Slupsky CM. Fecal microbiome and metabolome of infants fed bovine MFGM supplemented formula or standard formula with breast-fed infants as reference: a randomized controlled trial. *Sci Rep*. 2019;9(1):11589. doi:10.1038/s41598-019-47953-4.
39. Beloborodova N, Bairamov I, Olenin A, Shubina V, Teplova V, Fedotcheva N. Effect of phenolic acids of microbial origin on production of reactive oxygen species in mitochondria and neutrophils. *J Biomed Sci*. 2012;19(1):89. doi:10.1186/1423-0127-19-89.
40. Windey K, De Preter V, Verbeke K. Relevance of protein fermentation to gut health. *Mol Nutr Food Res*. 2012;56(1):184–196. doi:10.1002/mnfr.201100542.

41. Laursen MF, Sakanaka M, von Burg N, Mörbe U, Andersen D, Moll JM, Pekmez CT, Rivollier A, Michaelsen KF, Mølgaard C. Breastmilk-promoted bifidobacteria produce aromatic amino acids in the infant gut. *bioRxiv*. Published online 2020 Jan 1; 2020–2021. [10.1101/2020.01.22.914994](https://doi.org/10.1101/2020.01.22.914994).
42. Peirotén A, Gaya P, Arqués JL, Medina M, Rodríguez E. Technological properties of bifidobacterial strains shared by mother and child. *BioMed Res Int*. 2019;2019:9814623. doi:[10.1155/2019/9814623](https://doi.org/10.1155/2019/9814623).
43. Yu ZT, Chen C, Newburg DS. Utilization of major fucosylated and sialylated human milk oligosaccharides by isolated human gut microbes. *Glycobiology*. 2013;23(11):1281–1292. doi:[10.1093/glycob/cwt065](https://doi.org/10.1093/glycob/cwt065).
44. Ehrlich AM, Pacheco AR, Henrick BM, Taft D, Xu G, Huda MN, Mishchuk D, Goodson ML, Slupsky C, Barile D, et al. Indole-3-lactic acid associated with *Bifidobacterium*-dominated microbiota significantly decreases inflammation in intestinal epithelial cells. *BMC Microbiol*. 2020;20(1):357. doi:[10.1186/s12866-020-02023-y](https://doi.org/10.1186/s12866-020-02023-y).
45. Sakurai T, Odamaki T, Xiao JZ. Production of indole-3-lactic acid by *Bifidobacterium* strains isolated from human infants. *Microorganisms*. 2019;7(9):340. doi:[10.3390/microorganisms7090340](https://doi.org/10.3390/microorganisms7090340).
46. Larke JA, Kuhn-Riordon K, Taft DH, Sohn K, Iqbal S, Underwood MA, Mills DA, Slupsky CM. Preterm infant fecal microbiota and metabolite profiles are modulated in a probiotic specific manner. *J Pediatr Gastroenterol Nutr*. 2022;75(4):535–542. doi:[10.1097/MPG.0000000000003570](https://doi.org/10.1097/MPG.0000000000003570).
47. Muthumuni D, Miliku K, Wade KH, Timpson NJ, Azad MB. Enhanced protection against diarrhea among breastfed infants of nonsecretor mothers. *Pediatr Infect Dis J*. 2021;40(3):260–263. doi:[10.1097/INF.0000000000003014](https://doi.org/10.1097/INF.0000000000003014).
48. Thorven M, Grahn A, Hedlund KO, Johansson H, Wahlfrid C, Larson G, Svensson L. A homozygous nonsense mutation (428G→A) in the human secretor (*FUT2*) gene provides resistance to symptomatic norovirus (GGII) infections. *J Virol*. 2005;79(24):15351. doi:[10.1128/JVI.79.24.15351-15355.2005](https://doi.org/10.1128/JVI.79.24.15351-15355.2005).
49. Liu Z, Diana A, Slater C, Preston T, Gibson RS, Houghton L, Duffull SB. Development of a nonlinear hierarchical model to describe the disposition of deuterium in mother–infant pairs to assess exclusive breastfeeding practice. *J Pharmacokinet Pharmacodyn*. 2019;46(1):1–13. doi:[10.1007/s10928-018-9613-x](https://doi.org/10.1007/s10928-018-9613-x).
50. Leong C, Gibson RS, Diana A, Haszard JJ, Rahmannia S, Ansari MB, Inayah LS, Purnamasari AD, Houghton LA. Differences in micronutrient intakes of exclusive and partially breastfed Indonesian infants from resource-poor households are not accompanied by differences in micronutrient status, morbidity, or growth. *J Nutr*. 2021;151(3):705–715. doi:[10.1093/jn/nxaa381](https://doi.org/10.1093/jn/nxaa381).
51. Weljie AM, Newton J, Mercier P, Carlson E, Slupsky CM. Targeted profiling: quantitative analysis of ¹H NMR metabolomics data. *Anal Chem*. 2006;78(13):4430–4442. doi:[10.1021/ac060209g](https://doi.org/10.1021/ac060209g).
52. van Leeuwen SS, Dijkhuizen L, Gerwig GJ, Kamerling JP, van Leusen-van Kan EJM, Schoemaker RJW. Rapid milk group classification by ¹H NMR analysis of Le and H epitopes in human milk oligosaccharide donor samples. *Glycobiology*. 2014;24(8):728–739. doi:[10.1093/glycob/cwu036](https://doi.org/10.1093/glycob/cwu036).
53. Praticò G, Capuani G, Tomassini A, Baldassarre ME, Delfini M, Miccheli A. Exploring human breast milk composition by NMR-based metabolomics. *Nat Prod Res*. 2014;28(2):95–101. doi:[10.1080/14786419.2013.843180](https://doi.org/10.1080/14786419.2013.843180).
54. Wesolowska-Andersen A, Bahl MI, Carvalho V, Kristiansen K, Sicheritz-Pontén T, Gupta R, Licht TR. Choice of bacterial DNA extraction method from fecal material influences community structure as evaluated by metagenomic analysis. *Microbiome*. 2014;2(1):19. doi:[10.1186/2049-2618-2-19](https://doi.org/10.1186/2049-2618-2-19).
55. Callahan BJ, McMurdie PJ, Rosen MJ, Han AW, Johnson AJA, Holmes SP. DADA2: high-resolution sample inference from Illumina amplicon data. *Nat Methods*. 2016;13(7):581–583. doi:[10.1038/nmeth.3869](https://doi.org/10.1038/nmeth.3869).
56. Quast C, Pruesse E, Yilmaz P, Gerken J, Schweer T, Yarza P, Peplies J, Glöckner FO. The SILVA ribosomal RNA gene database project: improved data processing and web-based tools. *Nucleic Acids Res*. 2013;41(D1):D590–D596. doi:[10.1093/nar/gks1219](https://doi.org/10.1093/nar/gks1219).
57. Yilmaz P, Parfrey LW, Yarza P, Gerken J, Pruesse E, Quast C, Schweer T, Peplies J, Ludwig W, Glöckner FO, et al. The SILVA and “all-species living tree Project (LTP)” taxonomic frameworks. *Nucleic Acids Res*. 2014;42(D1):D643–D648. doi:[10.1093/nar/gkt1209](https://doi.org/10.1093/nar/gkt1209).
58. Romano J, Kromrey JD, Coraggio J, Skowronek J. Appropriate statistics for ordinal level data: should we really be using t-test and Cohen’s d for evaluating group differences on the NSSE and other surveys. *Annu Meet Florida Assoc Inst Res*. 2006;177:34.