

# UCSF

## UC San Francisco Previously Published Works

### Title

Past alcohol consumption and incident atrial fibrillation: The Atherosclerosis Risk in Communities (ARIC) Study

### Permalink

<https://escholarship.org/uc/item/23s6g4zc>

### Journal

PLOS ONE, 12(10)

### ISSN

1932-6203

### Authors

Dixit, Shalini  
Alonso, Alvaro  
Vittinghoff, Eric  
[et al.](#)

### Publication Date

2017

### DOI

10.1371/journal.pone.0185228

### Copyright Information

This work is made available under the terms of a Creative Commons Attribution License, available at <https://creativecommons.org/licenses/by/4.0/>

Peer reviewed

RESEARCH ARTICLE

# Past alcohol consumption and incident atrial fibrillation: The Atherosclerosis Risk in Communities (ARIC) Study

Shalini Dixit<sup>1</sup>, Alvaro Alonso<sup>2</sup>, Eric Vittinghoff<sup>3</sup>, Elsayed Soliman<sup>4</sup>, Lin Y. Chen<sup>5</sup>, Gregory M. Marcus<sup>1\*</sup>

**1** Cardiac Electrophysiology Section, Division of Cardiology, Department of Medicine, University of California, San Francisco, San Francisco, CA, United States of America, **2** Division of Epidemiology and Community Health, School of Public Health, University of Minnesota, Minneapolis, MN, United States of America, **3** Department of Epidemiology and Biostatistics, University of California, San Francisco, San Francisco, CA, United States of America, **4** Department of Epidemiology, Division of Public Health Sciences, Wake Forest University School of Medicine, Winston-Salem, NC, United States of America, **5** Cardiovascular Division, Department of Medicine, University of Minnesota Medical School, Minneapolis, MN, United States of America

\* [marcusg@medicine.ucsf.edu](mailto:marcusg@medicine.ucsf.edu)



**OPEN ACCESS**

**Citation:** Dixit S, Alonso A, Vittinghoff E, Soliman E, Chen LY, Marcus GM (2017) Past alcohol consumption and incident atrial fibrillation: The Atherosclerosis Risk in Communities (ARIC) Study. PLoS ONE 12(10): e0185228. <https://doi.org/10.1371/journal.pone.0185228>

**Editor:** Pavel Strnad, Medizinische Fakultät der RWTH Aachen, GERMANY

**Received:** February 17, 2017

**Accepted:** September 10, 2017

**Published:** October 18, 2017

**Copyright:** © 2017 Dixit et al. This is an open access article distributed under the terms of the [Creative Commons Attribution License](https://creativecommons.org/licenses/by/4.0/), which permits unrestricted use, distribution, and reproduction in any medium, provided the original author and source are credited.

**Data Availability Statement:** The data underlying our work can be obtained through two mechanisms. First, interested investigators can contact the ARIC Coordinating Center at the University of North Carolina – Chapel Hill. Details about the procedures for data request can be found on the following website: <http://www2.csc.c.unc.edu/aric/distribution-agreements>. Second, most ARIC data can be also obtained from BioLINCC, a repository maintained by the National Heart, Lung, and Blood Institute. The BioLINCC website (<https://biolincc.nhlbi.nih.gov/>) includes detailed

## Abstract

### Background

Although current alcohol consumption is a risk factor for incident atrial fibrillation (AF), the more clinically relevant question may be whether alcohol cessation is associated with a reduced risk.

### Methods and results

We studied participants enrolled in the Atherosclerosis Risk in Communities Study (ARIC) between 1987 and 1989 without prevalent AF. Past and current alcohol consumption were ascertained at baseline and at 3 subsequent visits. Incident AF was ascertained via study ECGs, hospital discharge ICD-9 codes, and death certificates. Of 15,222 participants, 2,886 (19.0%) were former drinkers. During a median follow-up of 19.7 years, there were 1,631 cases of incident AF, 370 occurring in former consumers. Former drinkers had a higher rate of AF compared to lifetime abstainers and current drinkers. After adjustment for potential confounders, every decade abstinent from alcohol was associated with an approximate 20% (95% CI 11–28%) lower rate of incident AF; every additional decade of past alcohol consumption was associated with a 13% (95% CI 3–25%) higher rate of AF; and every additional drink per day during former drinking was associated with a 4% (95% CI 0–8%) higher rate of AF.

### Conclusions

Among former drinkers, the number of years of drinking and the amount of alcohol consumed may each confer an increased risk of AF. Given that a longer duration of abstinence was associated with a decreased risk of AF, earlier modification of alcohol use may have a greater influence on AF prevention.

information about the available data and the process to obtain such data. Any interested researcher could obtain a de-identified, minimal dataset needed to replicate or reprove the study findings pending ethical approval following any of the two mentioned mechanisms.

**Funding:** S.D. was supported by the National Center for Advancing Translational Sciences (<https://ncats.nih.gov/>) / National Institutes of Health (NIH, <https://www.nih.gov/>) through UCSF-CTSI Grant Number TL1 TR000144 and by the Doris Duke Charitable Foundation (DDCF, <http://www.ddcf.org/>). This study was also funded by grant R01AA022222 from the National Institute on Alcohol Abuse and Alcoholism (NIAAA, <https://www.niaaa.nih.gov/>)/NIH (G.M.M.), grant 16EIA26410001 from the American Heart Association (A.A., <http://www.heart.org/HEARTORG/>), and by National Heart, Lung, and Blood Institute (NHLBI, <https://www.nhlbi.nih.gov/>) contracts (HHSN268201100005C, HHSN268201100006C, HHSN268201100007C, HHSN268201100008C, HHSN268201100009C, HHSN268201100010C, HHSN268201100011C, and HHSN268201100012C). The contents are solely the responsibility of the authors and do not necessarily represent the official views of the NIH, UCSF or the DDCF. The funders had no role in study design, data collection and analysis, decision to publish, or preparation of the manuscript.

**Competing interests:** Dr. Marcus has received research support from the NIH, the Patient-Centered Outcomes Research Institute, Medtronic and Pfizer and is a consultant for and hold equity in InCarda. This does not alter our adherence to PLOS ONE policies on sharing data and materials.

## Introduction

Atrial fibrillation (AF) affects millions of Americans and is growing in incidence and prevalence [1]. It is one of the most common causes of stroke and nearly doubles mortality [2, 3]. While many efforts have concentrated on the treatment of this important disease, primary prevention has rarely been a focus [4].

Several studies have found an association between heavy alcohol consumption, usually defined as greater than 3 drinks per day, and incident AF [5–7]. Though the data on moderate alcohol consumption is less conclusive, a meta-analysis of fourteen studies determined that there is a linear relationship between alcohol consumption and AF, reporting an 8% increase in risk associated with each 10 grams per day of alcohol intake [8]. A study from our group demonstrated that even greater access to alcohol is associated with a higher prevalence and incidence of AF [9]. In addition, we recently identified alcohol consumption as a predictor of left atrial enlargement and subsequent incident AF, elucidating a possible mechanism for this relationship [10]. Thus, eliminating alcohol intake could be a potentially effective strategy for preventing AF. As of now, it remains unknown whether once an individual has consumed alcohol, the “genie is out of the bottle” or whether cessation may still influence AF risk.

## Methods

### Study population

The ARIC study is a population-based prospective cohort designed to identify risk factors for atherosclerosis and cardiovascular disease. Between 1987 and 1989, 15,792 adults aged 45 to 64 were recruited from 4 U.S. communities: Forsyth County, NC; Jackson, MS; Minneapolis suburbs, MN; and Washington County, MD [11]. After a comprehensive baseline assessment, participants underwent four follow-up visits in 1990–92, 1993–95, 1996–98, and 2011–13 and were contacted yearly by phone to obtain information about hospital admissions and to ascertain vital status. For this analysis, we first excluded individuals with missing alcohol information ( $n = 324$ ), then those without an ECG examination ( $n = 214$ ), and then those with prevalent AF ( $n = 32$ ), for a total of 15,222 participants. Prevalent AF was defined as AF present at baseline examination; these participants were excluded in order to examine specifically new-onset AF. The ARIC study was approved by the institutional review boards at the University of Minnesota, Johns Hopkins University, Wake Forest University, University of North Carolina, University of Texas Health Sciences Center at Houston, and the University of Mississippi Medical Center. All participants provided written informed consent. For this particular analysis, a certificate of approval to conduct research on this de-identified dataset was obtained from the University of California, San Francisco Committee on Human Research.

### AF ascertainment

Prevalent AF was identified by baseline ECG. Incident AF diagnoses were obtained from subsequent study visit ECGs, hospital discharge records, and death certificates [12]. Study participants underwent standard supine 12-lead resting ECG recordings at baseline and at each follow-up exam. All ECG recordings were done with MAC PC Personal Cardiographs (Marquette Electronics, Inc., Milwaukee, WI). ECGs were transmitted by telephone to the ARIC Central ECG Reading Center for coding, interpretation and storage. All ECG recordings automatically coded as AF were visually re-checked by a trained cardiologist to confirm the diagnosis [13].

Annual follow-up phone calls to the study participants were used to identify hospitalizations and deaths, and discharge lists from local hospitals were reviewed for any cardiovascular events. Using International Classification of Diseases, ninth revision, clinical modification (ICD-9- CM) codes, AF was considered present if 427.31 or 427.32 were present in a hospitalization, so long as they were not accompanied by a procedure code for open cardiac surgery. The diagnosis of AF based on hospital discharge records has been previously validated in ARIC [12]. Finally, AF was considered present if the death certificate included ICD-9 code 427.3 or ICD-10 code I48.

## Alcohol assessment

Self-reported alcohol consumption was ascertained at baseline and each subsequent visit through an interviewer-administered dietary questionnaire. Participants were asked whether they currently consumed alcoholic beverages, and, if not, whether they had in the past. Follow-up questions for those citing past drinking included 1) number of years since the participant stopped drinking, 2) number of years the participant drank for, 3) types of alcoholic beverages consumed in the past, and 4) usual number of drinks per week before stopping. The amount of alcohol consumed currently and in the past in grams per week was then calculated assuming the following alcohol content: 4 oz of wine, 10.8 g; 12 oz of beer, 13.2 g; and 1.5 oz of hard liquor, 15.1 g [14, 15].

## Additional covariate ascertainment

At baseline, sex, race, education level, and smoking history were obtained from self-report. Level of education was divided into 3 categories: some high school or less, high school graduate/vocational school, some college/graduate school based on previous ARIC study analyses [14, 16]. Smoking status was classified as current, former, or never smoker, and cigarette years of smoking were calculated from the average number of cigarettes smoked per day times the number of years smoked for both current and former smokers. Body mass index (BMI,  $\text{kg}/\text{m}^2$ ) was calculated from baseline height and weight measurements. Diabetes mellitus (DM) was defined as a fasting glucose  $\geq 126$  mg/dL (or non-fasting glucose of  $\geq 200$  mg/dL), a self-reported physician diagnosis of diabetes, or current use of diabetes medication. Hypertension (HTN) was defined as a blood pressure measurement of  $\geq 140$  mmHg systolic and/or  $\geq 90$  mmHg diastolic, or current use of antihypertensive medication. Prevalent coronary artery disease (CAD) was defined as a self-reported history of myocardial infarction (MI), coronary bypass or angioplasty, or MI indicated on baseline ECG. Prevalent heart failure (HF) was identified by the Gothenburg criteria or by current use of HF medication [17].

## Statistical analysis

Continuous variables with normal distribution are presented as means  $\pm$  standard deviation (SD) and were compared using analysis of variance. Non-normally distributed continuous variables are presented as medians with interquartile ranges (IQRs) and were compared using the Kruskal–Wallis test. The association between categorical variables was determined using the chi-square test.

Cox proportional hazards models were used to investigate the associations between drinker status and past drinking characteristics and incident AF both before and after controlling for potential confounders. Checks for log-linearity of the alcohol consumption variables used as predictors were performed. Covariates were selected based on biological plausibility and past literature indicating associations with alcohol use and/or incident AF. We included study site, age, sex, race, BMI, smoking status, cigarette years, HTN, DM, CAD, and HF as potential

confounders. The proportional hazards assumption was assessed using Kaplan–Meier versus predicted survival plots and log-minus-log survival plots.

Analyses of longitudinal alcohol consumption and incident AF were performed using alcohol intake as a time dependent covariate. Alcohol intake in grams per day was available for visits 1, 2, 3, and 5 and was modeled as linear between visits and stable subsequent to visit 5. From these models, we derived two different predictor variables: average daily intake from baseline to present (in grams per day) and cumulative alcohol exposure (estimated kilograms consumed over follow-up). Cox proportional hazard models were then used to investigate the associations between these predictors and incident AF both in unadjusted and adjusted models as described above.

Data were analyzed using Stata 13 (StataCorp, College Station, TX, USA). A two-tailed  $p < 0.05$  was considered statistically significant. A certificate of approval to conduct research on this de-identified dataset was obtained from the University of California, San Francisco Committee on Human Research.

## Results

After exclusion of those with prevalent AF ( $n = 32$ ), there were 15,222 participants included in our analysis. At baseline, 3,790 (25%) reported being never drinkers, 8,546 (56%) current drinkers, and 2,886 (19%) former drinkers. Former consumers were more likely than current drinkers to be older, black, have a lower level of education, be former smokers, have smoked for longer, have drunk more alcohol per week (when drinking), have a larger BMI, and were more likely to have DM, HTN, CAD, and HF (Table 1). In comparing former drinkers to never drinkers, former consumers were more likely to be male, white, have a lower level of education, be current or former smokers, have smoked for longer, and have DM, CAD, and HF (Table 1).

During a median follow-up of 19.7 years, there were 1,631 cases of incident AF, 370 occurring in former consumers. Past drinkers had an increased risk of developing AF (Fig 1). Focusing on past alcohol consumers ( $n = 2,886$ ), those who did not develop AF quit longer ago, drank for a shorter period of time, and consumed less alcohol in the past (Fig 2). After adjusting for study site, age, sex, race, BMI, smoking status, cigarette years, HTN, DM, CAD, and HF, every decade abstinent from alcohol was associated with an approximate 20% lower rate of incident AF; every additional decade alcohol was consumed in the past was associated with a 13% higher rate of AF; and every additional drink per day during former drinking was associated with a 4% higher rate of AF (Table 2).

In unadjusted analyses, former consumers had an increased risk of developing AF compared to never drinkers (HR 1.46, 95% CI 1.26–1.68,  $p < 0.001$ ), but, after adjusting for study site, age, sex, race, smoking status, years of smoking, BMI, HTN, DM, CAD, and HF, this relationship lost statistical significance (Fig 3). Former drinkers remained at higher risk of AF when compared to current drinkers (HR 1.14, 95% CI 1.00–1.30,  $p = 0.049$  after adjustment). Further analyses stratifying current drinkers by number of drinks per week did not significantly affect our results.

Supplemental analyses examining alcohol type (beer, wine, liquor) consumed in the past or present demonstrated no associations with incident AF after multivariable adjustment. Estimated cumulative alcohol consumption (in kilograms of alcohol) over study follow-up was not associated with an increased risk of AF either before (HR 1.00, 95% CI 0.99–1.00,  $p = 0.081$ ) or after adjustment (HR 1.00, 95% CI 0.99–1.00,  $p = 0.724$ ).

## Discussion

In this community-based, prospective study of past alcohol consumption and incident AF, a longer duration of alcohol abstinence among former drinkers was associated with a lower risk

**Table 1. Baseline characteristics in the Atherosclerosis Risk in Communities (ARIC) study by drinking status.**

	Never Drinkers (N = 3,790)	Current Drinkers (N = 8,546)	Former Drinkers (N = 2,886)	P Value
Mean age ± SD, y	54.6 ± 5.8	53.8 ± 5.8	54.7 ± 5.7	<0.001
Male, n (%)	864 (23)	4,442 (52)	1,550 (54)	<0.001
Race, n (%)				
White	2,009 (53)	7,240 (85)	1,943 (67)	<0.001
Black	1,768 (47)	1,282 (15)	935 (32)	
Other	13 (0.3)	24 (0.3)	8 (0.3)	
Education level, n (%)				
High school or less	1,203 (32)	1,306 (15)	1,103 (38)	<0.001
High school graduate	1,298 (34)	2,789 (33)	841 (29)	
Vocational school	254 (7)	790 (9)	249 (9)	
College	694 (18)	2,672 (31)	513 (18)	
Graduate/professional school	333 (9)	977 (12)	175 (6)	
Smoking status, n (%)				
Never smoker	2,601 (69)	2,853 (33)	835 (29)	<0.001
Current smoker	568 (15)	2,554 (30)	883 (31)	
Former smoker	615 (16)	3,133 (37)	1,166 (40)	
Median cigarette years (IQR)	0 (0–96)	230 (0–620)	280 (0–720)	<0.001
Median drinks per week (IQR)	0 (0–0)	2.3 (0–7.2)	4 (1–12)	<0.001
Mean BMI ± SD, kg/m <sup>2</sup>	29 ± 6	27 ± 5	28 ± 6	<0.001
Diabetes mellitus, n (%)	619 (17)	681 (8)	512 (18)	<0.001
Hypertension, n (%)	1,624 (43)	2,553 (30)	1,115 (39)	<0.001
Coronary artery disease, n (%)	117 (3)	380 (5)	244 (8)	<0.001
Heart failure, n (%)	224 (6)	294 (4)	201 (7)	<0.001

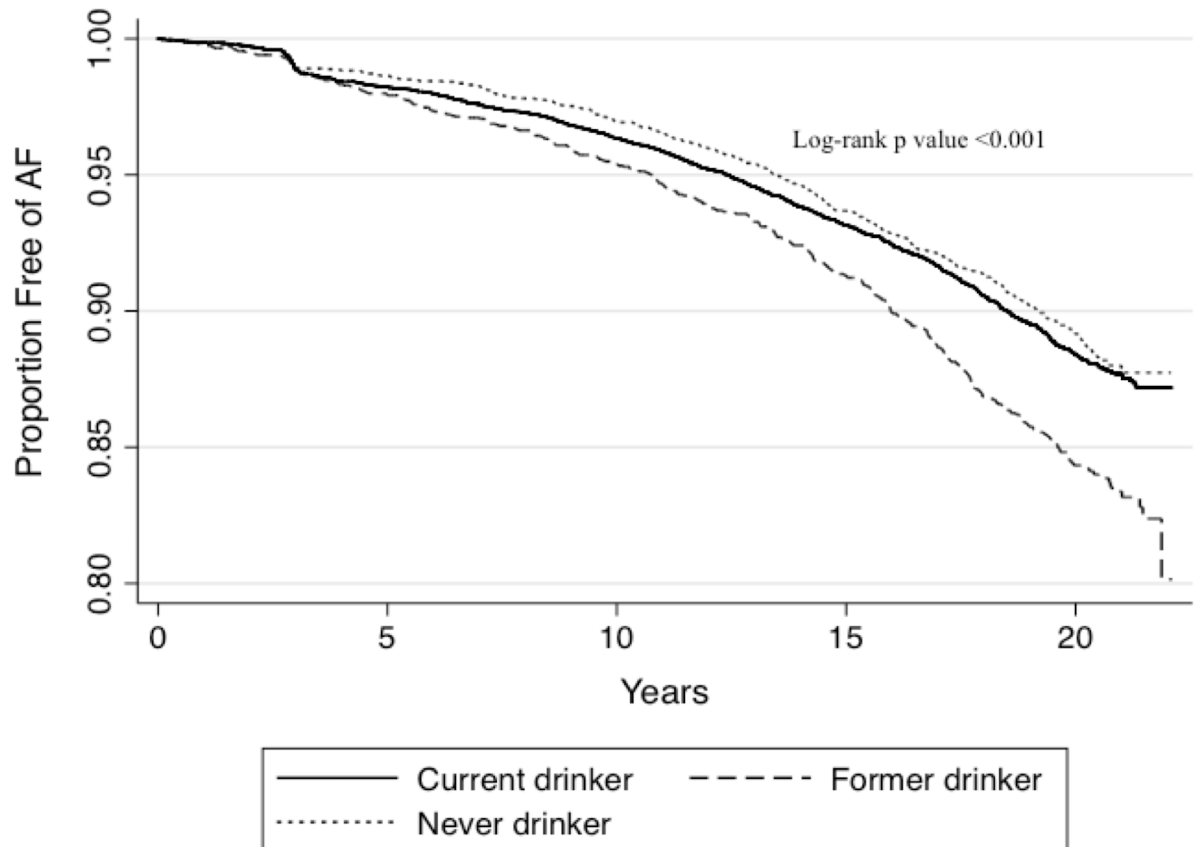
BMI, body mass index; IQR, interquartile range. Values are reported as mean ± SD, median (IQR), or number (%).

<https://doi.org/10.1371/journal.pone.0185228.t001>

of developing AF, whereas previously consuming alcohol for a longer duration and consuming a greater quantity of alcohol were each associated with a higher risk of developing AF.

Episodic heavy alcohol consumption, or binge drinking, has long been posited as a trigger for AF [18], and in recent years, researchers have begun to investigate the effects of chronic alcohol consumption on AF risk [8]. Though several studies have found an association between both heavy [6, 7] and moderate alcohol consumption [8] and incident AF, not all studies have been positive. Indeed, to our knowledge, the only major US community-based cohort studies to have reported on the relationship between alcohol and incident AF are: the Framingham Heart Study, where two examinations found an association [5, 10] and another did not [19], and the Cardiovascular Health Study [20], which failed to demonstrate a statistically significant relationship between current alcohol consumption and risk of AF.

This is the first report regarding alcohol and AF from ARIC, where the nature of the questions enabled a focus on past alcohol consumption. In our study, former drinkers were more likely to have other cardiovascular risk factors and comorbidities, such as current or former smoking, CAD, HF, HTN, and DM. Yet, they actually demonstrated lower rates of AF, including when adjusted for these comorbidities. Indeed, previous research has failed to focus on the potentially clinically relevant issue regarding alcohol cessation and whether or how abstinence from alcohol might influence AF risk. Our findings indicate that the numbers of years of drinking and the amount of alcohol consumed may confer an increased risk of AF, even when

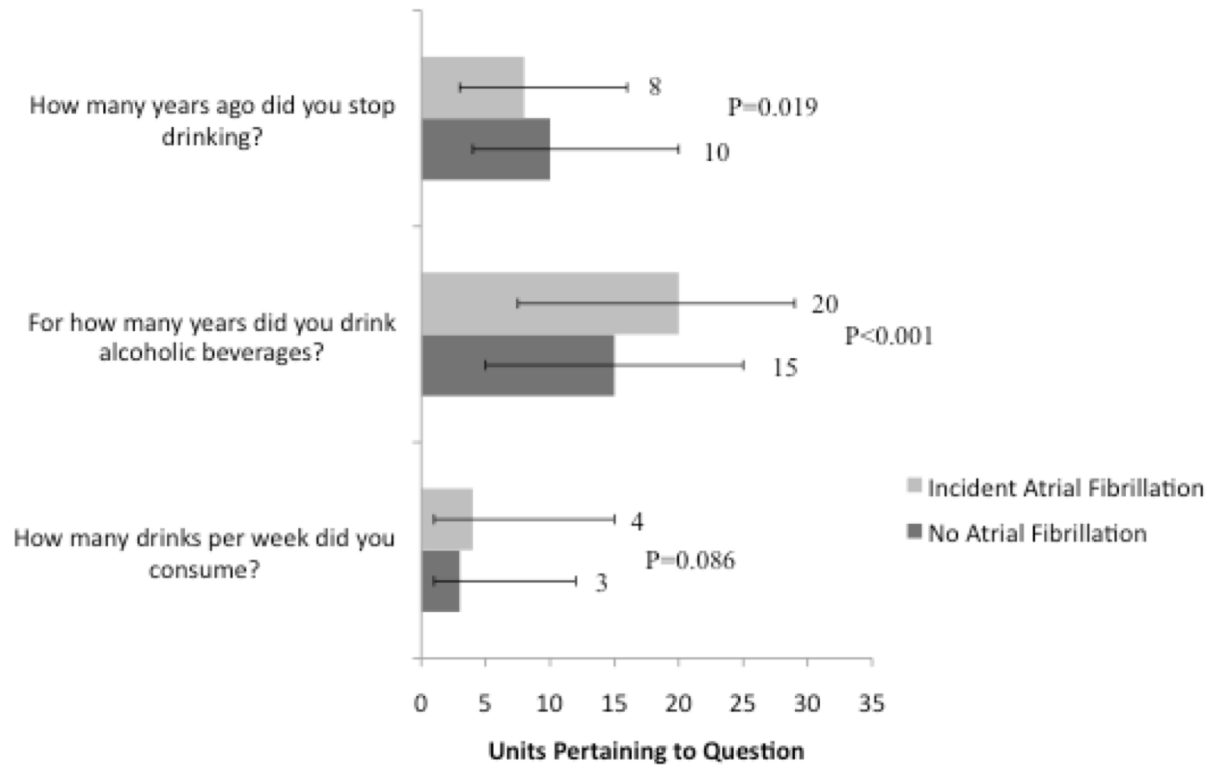


**Fig 1. Kaplan-Meier curves for incident atrial fibrillation (AF) in Atherosclerosis Risk in Communities (ARIC) study participants by baseline drinking status.** Differences in proportions with and without AF are compared using the log-rank test.

<https://doi.org/10.1371/journal.pone.0185228.g001>

abstinence is later practiced, suggesting that there may be chronic remodeling effects of alcohol that do not rely on alcohol as an acute trigger. Every decade of alcohol abstinence was associated with an approximate 20% decreased risk of incident AF, or one can consider the decrease in risk to be about 2% per year. Our recent study of alcohol consumption and incident AF in the Offspring and Original Framingham Study cohorts found that an estimated 24% of the association between alcohol and AF risk was explained by left atrial enlargement, offering a potential mechanism for alcohol's arrhythmogenic effects on the myocardium [10]. Further research into which drinkers experience atrial remodeling and whether left atrial size decreases in those who quit drinking is critical. In addition, future investigations may help identify patients particularly prone to alcohol-related AF, and, when done, targeted counseling to those patients may be especially effective. For a disease that affects millions and is one of the most important causes of stroke [3], identifying modifiable risk factors is especially important.

Of interest, we found no relationship between either current drinking or cumulative alcohol exposure and incident AF. While the explanation for this remains unknown, underascertainment of prevalent AF as a cause must be considered. Specifically, prevalent AF was determined by baseline ECG only and therefore paroxysmal AF patients or formerly cardioverted persistent patients who happened to be in sinus rhythm during their baseline visit would have been misclassified. If those true (yet underascertained) prevalent AF patients had ceased alcohol intake because of their AF, this could lead to the false observation that current alcohol consumption failed to predict "incident" AF. Indeed, past consumption predicted incident AF in



**Fig 2. Summary of alcohol consumption patterns among former drinkers (N = 2,886) stratified by the development of incident atrial fibrillation.** Values are reported as medians for numeric responses. Y error bars denote interquartile ranges.

<https://doi.org/10.1371/journal.pone.0185228.g002>

unadjusted analysis; loss of statistical significance in that relationship appeared to be primarily mediated by smoking. Importantly, this potential limitation of underascertainment would not result in any false positive results regarding the relationship between alcohol consumption and AF and specifically should not explain the results observed regarding differences *within* the past consumption group and AF.

**Table 2. Risk of incident atrial fibrillation according to past alcohol consumption among former drinkers (N = 2,886).**

	Unadjusted Hazard Ratio	95% Confidence Interval	P Value	Adjusted Hazard Ratio	95% Confidence Interval	P Value
<b>Number of Years Abstinent</b>	0.89*	0.81–0.99	0.033	0.80*	0.72–0.89	<0.001
<b>Number of Years Consumed Alcohol</b>	1.30*	1.19–1.42	<0.001	1.13*	1.03–1.25	0.011
<b>Average Number of Drinks per Day</b>	1.07 <sup>†</sup>	1.03–1.10	<0.001	1.04 <sup>†</sup>	1.00–1.08	0.040

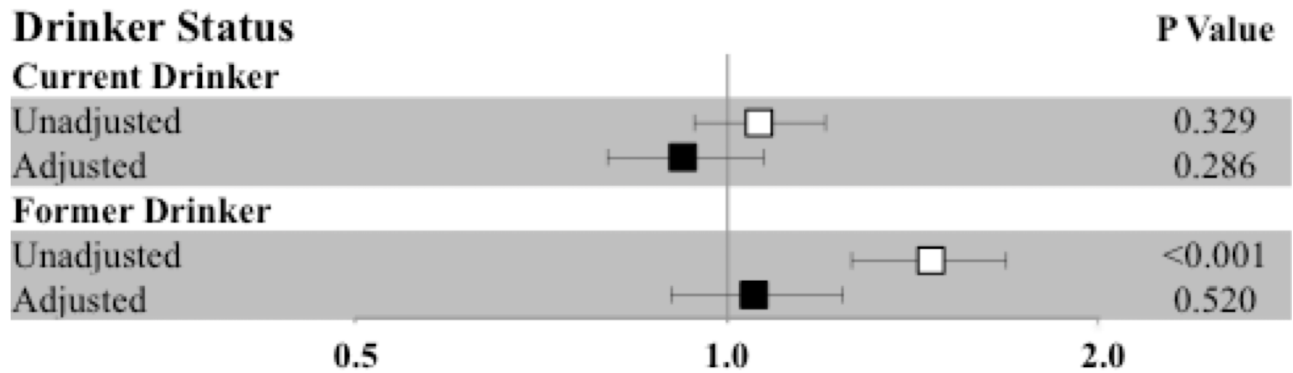
\*Hazard ratio per decade.

<sup>†</sup>Hazard ratio per daily drink.

Multivariate analyses were adjusted for study site, age, sex, race, body mass index, smoking status, cigarette years, hypertension, diabetes mellitus, coronary artery disease, and heart failure.

<https://doi.org/10.1371/journal.pone.0185228.t002>





### Hazard Ratio Compared to Never Drinkers

**Fig 3. Hazard ratios for incident atrial fibrillation according to drinker status with never drinkers as the reference group.** Hazard ratios are shown unadjusted (white square) and adjusted (black square) for study site, age, sex, race, body mass index, smoking status, cigarette years, hypertension, diabetes mellitus, coronary artery disease, and heart failure. Y error bars denote 95% confidence intervals.

<https://doi.org/10.1371/journal.pone.0185228.g003>

Several limitations of our study must be acknowledged. First, we used self-report data as a measure of participants’ past and current drinking behavior. Though self-report has been previously validated as an accurate, reproducible method of assessing alcohol consumption over an extended period of time [21, 22], it is possible that this introduced some error into our data. However, given that participants were unaware of how this alcohol information would be used, it seems unlikely that recall bias was present. Given that diagnosis of AF relied on primarily hospital discharge records, as well as death certificates and study visit ECGs, under-ascertainment of incident AF is likely. It is important to emphasize that, in general, this would lead to inadequate power (and therefore may explain the negative results regarding current alcohol use and cumulative use) but would not be expected to result in false positives—in other words, we do not believe that any of these limitations would explain any false positive findings regarding the primary focus of this paper, alcohol abstinence duration and incident AF. In addition, given that data regarding paroxysmal versus persistent AF was not collected, we cannot comment on how alcohol might influence the risk of one type of AF versus another. A final limitation is our lack of data surrounding participants’ reasons for quitting drinking, as this may help explain the higher risk of AF among former drinkers. However, this again (if indeed the case) would not be sufficient to explain a lower risk of AF with a longer duration of abstinence.

### Conclusions

In this study of over 15,000 ARIC participants, we found that among former drinkers, the number of years of drinking and the amount of alcohol consumed each conferred an increased risk of AF. Finally, a longer duration of abstinence was associated with a decreased risk of AF, indicating that earlier modification of heavy alcohol use may have a greater influence on AF prevention.

### Acknowledgments

The authors thank the staff and participants of the ARIC study for their important contributions.

## Author Contributions

**Conceptualization:** Shalini Dixit, Gregory M. Marcus.

**Data curation:** Shalini Dixit, Eric Vittinghoff.

**Formal analysis:** Shalini Dixit, Eric Vittinghoff, Gregory M. Marcus.

**Funding acquisition:** Shalini Dixit, Alvaro Alonso, Gregory M. Marcus.

**Investigation:** Shalini Dixit, Alvaro Alonso, Elsayed Soliman, Lin Y. Chen, Gregory M. Marcus.

**Methodology:** Shalini Dixit, Gregory M. Marcus.

**Project administration:** Shalini Dixit, Alvaro Alonso, Elsayed Soliman, Lin Y. Chen, Gregory M. Marcus.

**Resources:** Alvaro Alonso, Elsayed Soliman, Lin Y. Chen.

**Supervision:** Gregory M. Marcus.

**Validation:** Shalini Dixit, Alvaro Alonso, Elsayed Soliman, Lin Y. Chen.

**Visualization:** Shalini Dixit, Gregory M. Marcus.

**Writing – original draft:** Shalini Dixit, Gregory M. Marcus.

**Writing – review & editing:** Shalini Dixit, Alvaro Alonso, Eric Vittinghoff, Elsayed Soliman, Lin Y. Chen, Gregory M. Marcus.

## References

1. Naccarelli GV, Varker H, Lin J, Schulman KL. Increasing prevalence of atrial fibrillation and flutter in the United States. *The American journal of cardiology*. 2009; 104(11):1534–9. <https://doi.org/10.1016/j.amjcard.2009.07.022> PMID: 19932788.
2. Fuster V, Ryden LE, Cannom DS, Crijns HJ, Curtis AB, Ellenbogen KA, et al. ACC/AHA/ESC 2006 Guidelines for the Management of Patients with Atrial Fibrillation: a report of the American College of Cardiology/American Heart Association Task Force on Practice Guidelines and the European Society of Cardiology Committee for Practice Guidelines (Writing Committee to Revise the 2001 Guidelines for the Management of Patients With Atrial Fibrillation): developed in collaboration with the European Heart Rhythm Association and the Heart Rhythm Society. *Circulation*. 2006; 114(7):e257–354. <https://doi.org/10.1161/CIRCULATIONAHA.106.177292> PMID: 16908781.
3. Chugh SS, Blackshear JL, Shen WK, Hammill SC, Gersh BJ. Epidemiology and natural history of atrial fibrillation: clinical implications. *Journal of the American College of Cardiology*. 2001; 37(2):371–8. PMID: 11216949.
4. Marcus GM. Predicting incident atrial fibrillation: an important step toward primary prevention. *Archives of internal medicine*. 2010; 170(21):1874–5. <https://doi.org/10.1001/archinternmed.2010.426> PMID: 21098344.
5. Djousse L, Levy D, Benjamin EJ, Bleuse SJ, Russ A, Larson MG, et al. Long-term alcohol consumption and the risk of atrial fibrillation in the Framingham Study. *The American journal of cardiology*. 2004; 93(6):710–3. <https://doi.org/10.1016/j.amjcard.2003.12.004> PMID: 15019874.
6. Conen D, Tedrow UB, Cook NR, Moorthy MV, Buring JE, Albert CM. Alcohol consumption and risk of incident atrial fibrillation in women. *JAMA*. 2008; 300(21):2489–96. Epub 2008/12/04. <https://doi.org/10.1001/jama.2008.755> PMID: 19050192; PubMed Central PMCID: PMC2630715.
7. Whitman IR, Agarwal V, Nah G, Dukes JW, Vittinghoff E, Dewland TA, et al. Alcohol Abuse and Cardiac Disease. *Journal of the American College of Cardiology*. 2017; 69(1):13–24. <https://doi.org/10.1016/j.jacc.2016.10.048> PMID: 28057245; PubMed Central PMCID: PMC5226115.
8. Kodama S, Saito K, Tanaka S, Horikawa C, Saito A, Heianza Y, et al. Alcohol consumption and risk of atrial fibrillation: a meta-analysis. *Journal of the American College of Cardiology*. 2011; 57(4):427–36. <https://doi.org/10.1016/j.jacc.2010.08.641> PMID: 21251583.
9. Dukes JW, Dewland TA, Vittinghoff E, Olgin JE, Pletcher MJ, Hahn JA, et al. Access to alcohol and heart disease among patients in hospital: observational cohort study using differences in alcohol sales

- laws. *Bmj*. 2016; 353:i2714. <https://doi.org/10.1136/bmj.i2714> PMID: 27301557; PubMed Central PMCID: PMC4908314.
10. McManus DD, Yin X, Gladstone R, Vittinghoff E, Vasan RS, Larson MG, et al. Alcohol Consumption, Left Atrial Diameter, and Atrial Fibrillation. *Journal of the American Heart Association*. 2016; 5(9). <https://doi.org/10.1161/JAHA.116.004060> PMID: 27628571; PubMed Central PMCID: PMC4908314.
  11. The Atherosclerosis Risk in Communities (ARIC) Study: design and objectives. The ARIC investigators. *American journal of epidemiology*. 1989; 129(4):687–702. PMID: 2646917.
  12. Alonso A, Agarwal SK, Soliman EZ, Ambrose M, Chamberlain AM, Prineas RJ, et al. Incidence of atrial fibrillation in whites and African-Americans: the Atherosclerosis Risk in Communities (ARIC) study. *American heart journal*. 2009; 158(1):111–7. <https://doi.org/10.1016/j.ahj.2009.05.010> PMID: 19540400; PubMed Central PMCID: PMC2720573.
  13. Soliman EZ, Prineas RJ, Case LD, Zhang ZM, Goff DC Jr. Ethnic distribution of ECG predictors of atrial fibrillation and its impact on understanding the ethnic distribution of ischemic stroke in the Atherosclerosis Risk in Communities (ARIC) study. *Stroke; a journal of cerebral circulation*. 2009; 40(4):1204–11. <https://doi.org/10.1161/STROKEAHA.108.534735> PMID: 19213946.
  14. Eigenbrodt ML, Mosley TH Jr., Hutchinson RG, Watson RL, Chambless LE, Szklo M. Alcohol consumption with age: a cross-sectional and longitudinal study of the Atherosclerosis Risk in Communities (ARIC) study, 1987–1995. *American journal of epidemiology*. 2001; 153(11):1102–11. PMID: 11390330.
  15. Volcik KA, Ballantyne CM, Fuchs FD, Sharrett AR, Boerwinkle E. Relationship of alcohol consumption and type of alcoholic beverage consumed with plasma lipid levels: differences between Whites and African Americans of the ARIC study. *Annals of epidemiology*. 2008; 18(2):101–7. <https://doi.org/10.1016/j.annepidem.2007.07.103> PMID: 17855114; PubMed Central PMCID: PMC2819069.
  16. Misialek JR, Rose KM, Everson-Rose SA, Soliman EZ, Clark CJ, Lopez FL, et al. Socioeconomic Status and the Incidence of Atrial Fibrillation in Whites and Blacks: The Atherosclerosis Risk in Communities (ARIC) Study. *Journal of the American Heart Association*. 2014; 3(4). <https://doi.org/10.1161/JAHA.114.001159> PMID: 25142059.
  17. Chamberlain AM, Agarwal SK, Folsom AR, Duval S, Soliman EZ, Ambrose M, et al. Smoking and incidence of atrial fibrillation: results from the Atherosclerosis Risk in Communities (ARIC) study. *Heart rhythm: the official journal of the Heart Rhythm Society*. 2011; 8(8):1160–6. <https://doi.org/10.1016/j.hrthm.2011.03.038> PMID: 21419237; PubMed Central PMCID: PMC3139831.
  18. Mandyam MC, Vedantham V, Scheinman MM, Tseng ZH, Badhwar N, Lee BK, et al. Alcohol and vagal tone as triggers for paroxysmal atrial fibrillation. *The American journal of cardiology*. 2012; 110(3):364–8. <https://doi.org/10.1016/j.amjcard.2012.03.033> PMID: 22521307; PubMed Central PMCID: PMC3398200.
  19. Shen J, Johnson VM, Sullivan LM, Jacques PF, Magnani JW, Lubitz SA, et al. Dietary factors and incident atrial fibrillation: the Framingham Heart Study. *The American journal of clinical nutrition*. 2011; 93(2):261–6. <https://doi.org/10.3945/ajcn.110.001305> PMID: 21106919; PubMed Central PMCID: PMC3021424.
  20. Mukamal KJ, Psaty BM, Rautaharju PM, Furberg CD, Kuller LH, Mittleman MA, et al. Alcohol consumption and risk and prognosis of atrial fibrillation among older adults: the Cardiovascular Health Study. *American heart journal*. 2007; 153(2):260–6. <https://doi.org/10.1016/j.ahj.2006.10.039> PMID: 17239687.
  21. Giovannucci E, Colditz G, Stampfer MJ, Rimm EB, Litin L, Sampson L, et al. The assessment of alcohol consumption by a simple self-administered questionnaire. *American journal of epidemiology*. 1991; 133(8):810–7. PMID: 2021148.
  22. Del Boca FK, Darkes J. The validity of self-reports of alcohol consumption: state of the science and challenges for research. *Addiction*. 2003; 98 Suppl 2:1–12. PMID: 14984237.