

UCSF

UC San Francisco Previously Published Works

Title

The Development of Plasmodium falciparum-Specific IL10 CD4 T Cells and Protection from Malaria in Children in an Area of High Malaria Transmission

Permalink

<https://escholarship.org/uc/item/22n9g7k4>

Journal

Frontiers in Immunology, 8(OCT)

ISSN

1664-3224

Authors

Boyle, Michelle J
Jagannathan, Prasanna
Bowen, Katherine
[et al.](#)

Publication Date

2017

DOI

10.3389/fimmu.2017.01329

Copyright Information

This work is made available under the terms of a Creative Commons Attribution License, available at <https://creativecommons.org/licenses/by/4.0/>

Peer reviewed



The Development of *Plasmodium falciparum*-Specific IL10 CD4 T Cells and Protection from Malaria in Children in an Area of High Malaria Transmission

Michelle J. Boyle^{1,2}, Prasanna Jagannathan^{1,3}, Katherine Bowen¹, Tara I. McIntyre¹, Hilary M. Vance¹, Lila A. Farrington¹, Alanna Schwartz¹, Felistas Nankya⁴, Kate Naluwu⁴, Samuel Wamala⁴, Esther Sikyomu⁴, John Rek⁴, Bryan Greenhouse¹, Emmanuel Arinaitwe⁴, Grant Dorsey¹, Moses R. Kamya⁵ and Margaret E. Feeney^{1,6*}

¹ Department of Medicine, University of California San Francisco, San Francisco, CA, United States, ² Center for Biomedical Research, The Burnet Institute, Melbourne, VIC, Australia, ³ Department of Medicine, Stanford University, Stanford, CA, United States, ⁴ Infectious Diseases Research Collaboration, Kampala, Uganda, ⁵ Department of Medicine, Makerere University College of Health Sciences, Kampala, Uganda, ⁶ Department of Pediatrics, University of California San Francisco, San Francisco, CA, United States

OPEN ACCESS

Edited by:

Hao Shen,
University of Pennsylvania,
United States

Reviewed by:

Dirk Schlüter,
Otto-Von-Guericke
University Magdeburg, Germany
Joseph Larkin,
University of Florida,
United States

*Correspondence:

Margaret E. Feeney
margaret.feeney@ucsf.edu

Specialty section:

This article was submitted to
Microbial Immunology,
a section of the journal
Frontiers in Immunology

Received: 20 July 2017

Accepted: 29 September 2017

Published: 19 October 2017

Citation:

Boyle MJ, Jagannathan P, Bowen K, McIntyre TI, Vance HM, Farrington LA, Schwartz A, Nankya F, Naluwu K, Wamala S, Sikyomu E, Rek J, Greenhouse B, Arinaitwe E, Dorsey G, Kamya MR and Feeney ME (2017) The Development of *Plasmodium falciparum*-Specific IL10 CD4 T Cells and Protection from Malaria in Children in an Area of High Malaria Transmission. *Front. Immunol.* 8:1329. doi: 10.3389/fimmu.2017.01329

Cytokine-producing CD4 T cells have important roles in immunity against *Plasmodium falciparum* (Pf) malaria. However, the factors influencing functional differentiation of Pf-specific CD4 T cells in naturally exposed children are not well understood. Moreover, it is not known which CD4 T-cell cytokine-producing subsets are most critical for protection. We measured Pf-specific IFN γ -, IL10-, and TNF α -producing CD4 T-cell responses by multi-parametric flow cytometry in 265 children aged 6 months to 10 years enrolled in a longitudinal observational cohort in a high malaria transmission site in Uganda. We found that both age and parasite burden were independently associated with cytokine production by CD4 T cells. IL10 production by IFN γ ⁺ CD4 T cells was higher in younger children and in those with high-parasite burden during recent infection. To investigate the role of CD4 T cells in immunity to malaria, we measured associations of Pf-specific CD4 cytokine-producing cells with the prospective risk of Pf infection and clinical malaria, adjusting for household exposure to Pf-infected mosquitos. Overall, the prospective risk of infection was not associated with the total frequency of Pf-specific CD4 T cells, nor of any cytokine-producing CD4 subset. However, the frequency of CD4 cells producing IL10 but not inflammatory cytokines (IFN γ and TNF α) was associated with a decreased risk of clinical malaria once infected. These data suggest that functional polarization of the CD4 T-cell response may modulate the clinical manifestations of malaria and play a role in naturally acquired immunity.

Keywords: *Plasmodium falciparum*, CD4 T cells, malaria, tolerance, interleukin 10

INTRODUCTION

Despite a decline in the incidence of malaria globally, over 50% of the world's population remains at risk of infection (1), with the largest burden caused by *Plasmodium falciparum* (Pf) parasites. Our incomplete understanding of the mechanisms mediating naturally acquired immunity to Pf poses a barrier to the development of vaccines and other control strategies. In endemic settings,

the incidence of symptomatic malaria declines with increasing age and cumulative exposure. However, even highly exposed individuals remain susceptible to asymptomatic *Pf* infection into adulthood, and adults do not differ in time-to-infection compared with children, indicating that sterile immunity does not usually develop in response to natural infection (2). It is likely that the biological mechanisms underlying protection from infection and restriction of parasite growth are distinct from those that mediate protection from symptomatic malaria.

CD4 T-cell responses are important components of naturally acquired and vaccine-induced immunity to malaria [reviewed in Ref. (3)]. However, many aspects of the *Pf*-specific CD4 T-cell response in naturally exposed individuals, including the critical effector functions responsible for preventing infection and clinical malaria, remain poorly understood. There has been a considerable body of research assessing the role of cytokines in protection or risk of malaria, which has highlighted a role for several cytokines including interferon gamma (IFN γ), interleukin 10 (IL10), and tumor necrosis factor alpha (TNF α) in anti-malarial immunity [reviewed in Ref. (4–6)]. However, these studies have largely been based on plasma cytokine measurements or, alternatively, measurement of cytokine production by bulk cell populations (e.g., ELISA of culture supernatants), and have therefore been unable to characterize the cytokines (or combinations of cytokines) that are produced at the individual cell level, or to phenotype the cell producing the cytokines (i.e., CD4 vs. CD8 T cells, vs. others, such as $\gamma\delta$ T cells). This is of fundamental importance because antigen-specific T cells are functionally heterogeneous, and the functional polarization of CD4 T cells, as defined by their cytokine production profiles, has been associated with the ability—or failure—to prevent or contain infection in several infectious disease models. In the few published studies which have used multicolor flow cytometry to assess *Pf*-specific cytokine production by CD4 T cells at an individual cell level, it has been shown that the *Pf*-specific CD4 T-cell response in highly malaria-exposed children is dominated by IFN γ and IL10 coproducing cells (7–10). Interleukin 10 production by CD4 T cells may help to control immunopathology and limit symptoms of infection (10), as suggested by murine models of malaria and other parasitic infections such as *Leishmania* and toxoplasmosis, where IL10 production from T helper cell (Th1) IFN γ -producing CD4 T cells is essential for dampening inflammatory responses, preventing disease (5, 11, 12), and protecting from IFN γ -dependent, TNF α -mediated pathology (13). CD4 T-cell responses may also be important in mediating protection from malaria by preventing parasite infection or restricting parasite replication once infection is established. We have recently shown that in areas of high malaria transmission, inflammatory CD4 T cells producing IFN γ and TNF α dominate in immune adults, who rarely experience high-density infections or clinical malaria despite constant exposure to infection (9).

Here, we studied a large and well-characterized longitudinal cohort of children from a highly malaria-endemic region of Eastern Uganda (14). We quantified *Pf*-specific IFN γ -, IL10-, and TNF α -producing CD4 T cells from 265 children aged

6 months to 10 years, and identified factors that influence the functional differentiation of *Pf*-specific CD4 T cells. Then, using detailed clinical outcome measures and household-level mosquito data to control for heterogeneity in environmental exposure to infected mosquitos (15), we analyzed the relationship between these CD4 subsets and prospective protection from *Pf* infection, and (separately) risk of developing clinical malaria once infected. Our data suggest opposing roles for TNF α and IL10 *Pf*-specific CD4 T cells in naturally acquired immunity to malaria in children.

MATERIALS AND METHODS

Ethics Statement

This study was carried out in accordance with the recommendations of Uganda National Council of Science and Technology and the institutional review boards of the University of California, San Francisco, and Makerere University, with written informed consent from all adult subjects or parent/guardian of all study participants. All subjects gave written informed consent in accordance with the Declaration of Helsinki.

The protocol was approved by the institutional review boards of the University of California, San Francisco (institutional review board number 11-05995; reference number 067647), and Makerere University.

Study Participants

Samples were obtained from participants in the East African International Centers of Excellence in Malaria Research “PRISM” Nagongera study cohort that was initiated in 2011 and is ongoing (14). This cohort consists of 100 households within the Nagongera sub-county in Tororo district. Malaria transmission in this region is holoendemic, with slight increases in malaria incidence and parasite prevalence during two annual seasonal peaks from October to January and April to July. In all households, one adult caregiver and all eligible children aged 6 months to 10 years were enrolled in the study. Exclusion criteria included any known chronic medical conditions requiring specialized care (including HIV infection). The cohort is dynamic, with children exiting the study at age 11, and new children born into study households enrolled at 6 months of age. For the work presented here, all children were scheduled for an “immunology blood draw” with samples taken between January and April 2013. Children who presented with malaria (currently febrile and blood smear detectable parasites), or had a recorded episode of malaria in the last 7 days, were re-scheduled to be bled at a later time point. In total, plasma blood mononuclear cell (PBMC) responses from 265 out of 270 children enrolled at the time of sampling were collected and analyzed. The study cohort characteristics of sampled children are presented in **Table 1**.

Clinical Management and Measurement of Clinical Parameters

Upon enrollment all study participants were given an insecticide treated bed net and followed for all medical care at a dedicated study clinic. All participants were reimbursed for travel to and

TABLE 1 | Study cohort characteristics.

Characteristic	Finding
Number of children	265
Age, years (median, IQR)	5.8 (3.5–8.1)
Patent infection at blood draw (blood smear positive)	77 (29%)
Subpatent infection at blood draw (PCR positive, smear negative)	29 (11%)
Any infection at blood draw (blood smear and/or PCR positive) ^a	106 (40%)
Clinical characteristics in the year prior to blood draw	
Person-days observed (median, min–max)	365 (36–365)
Malaria incidence (median, IQR)	2.0 (1.0–4.0)
Parasite density during infection in last 3 months (log ₁₀ , parasite/μL, median, IQR) ^b	3.9 (3.3–4.6)
Characteristics in the year following blood draw	
Number of routine visits/child ^c (median, min–max)	4 (0–5)
Odds of any infection at routine visit ^d (OR, 95% CI)	4.8 (3.6–6.5)
Odds of malaria at routine visit (OR, 95% CI)	0.26 (0.21–0.33)
dMER in year following blood draw, female Anopheles/house/day (median IQR) ^e	27.3 (16.5–37.1)

^aCurrent infection measured by PCR from dried blood spots and/or blood smear, all infections are asymptomatic.

^bParasite density is the most recent patent, blood smear positive parasite infection within the last 3 months, log transformed. In total, 211 children had a patent infection in 3 months prior to blood draw.

^cFor protection analysis, all routine visits were considered. Routine visit was characterized as no-infection, low-density infection (LAMP positive, blood smear negative), patent infection (blood smear positive), or malaria (blood smear positive and fever at visit, or within 21 days prior and 7 days following visit). Odds of infection were calculated with mixed-effects logistic regression.

^dOdds of any infection at routine includes symptomatic malaria infection cases, and asymptomatic patent (blood smear detectable) or asymptomatic subpatent (blood smear negative, LAMP positive).

^edMER is estimated from the mean household CDC light trap counts of *Anopheles* mosquito measured at monthly intervals over the 12 months following blood draw. dMER, daily mosquito exposure rate; LAMP, loop-mediated isothermal amplification; PCR, polymerase chain reaction.

from clinic for all visits, increasing the likelihood that all cases of malaria infection were detected. Furthermore, participants agreed to avoid all antimalarial medications administered outside the study, and compliance was tracked with questionnaire at all routine study visits. Children who presented with a fever (tympanic temperature $\geq 38.0^{\circ}\text{C}$) or history of fever in the previous 24 h had blood obtained by finger prick for a thick smear. If the thick smear was positive for *Plasmodium* parasites, the patient was diagnosed with malaria regardless of parasite density, and treated with artemether–lumefantrine, the recommended treatment for malaria in Uganda. Incident episodes of malaria were defined as all febrile episodes accompanied by any parasitemia requiring treatment, but not preceded by another treatment in the prior 14 days.

Routine assessments with active case detection were performed in the study clinic every 3 months, including blood smears and dry blood spots to detect for parasite infection. Negative blood smears obtained at routine assessments were tested for the presence of submicroscopic malaria parasites using loop-mediated isothermal amplification (LAMP) (16). At the time of routine assessments, children were divided into four categories: (1) no evidence of parasite infection; (2) asymptomatic, submicroscopic (LAMP positive) infection; (3) asymptomatic, blood smear positive infection, or (4) symptomatic malaria, with

a window of 21 days prior to and 7 days following the routine visit to ensure capture of malaria episodes that were recently treated or infections that soon became symptomatic.

To assess for submicroscopic infection at the time of the “immunology” blood draw, *Plasmodium* DNA was extracted from dried blood spots and analyzed by polymerase chain reaction (PCR) as previously described (17). In 17 children (6.3%), PCR was not performed due to missing dried blood spots and current infection status was imputed from blood smear (10 were positive by blood smear, and 7 were negative). All analysis considered infection status as positive if participant had either a blood smear patent infection, or a PCR positive, blood smear negative subpatent infection.

Daily Mosquito Exposure Rate (dMER)

The dMER was calculated for each individual based on the mean household-level female *Anopheles* mosquito counts obtained from CDC light traps placed overnight (once per month) within the household of each individual trial participant (15). For analyses to assess drivers of CD4 T-cell responses, dMER was calculated as the mean female *Anopheles* mosquito counts from the prior 12 months, and for analyses to assess outcomes of protection, dMER was calculated as the mean female *Anopheles* mosquito counts from the 12 months following blood draw. dMER was used in analysis as a categorical variable (0–8, >8–40, >40–80, and >80 mosquitos/household/day), based on analyses of the relationship between dMER and infection (Table S1 in Supplementary Material).

Measuring *Pf* CD4 T-Cell Responses

Analysis of CD4 T-cell responses to *Pf*-infected red blood cells (RBCs) *via* intracellular cytokine staining was performed as previously described (8, 9). PBMCs were stimulated with *Pf*-infected RBCs or uninfected RBCs and CD4 T-cell production of IFN γ , IL10, and TNF α were measured *via* intracellular staining. PBMCs were thawed using standard methods and rested overnight in 10% fetal bovine serum. A total of 10^6 PBMCs were stimulated with intact purified trophozoite/schizont-stage *Pf* (clone 3D7)-infected RBCs or uninfected RBCs at an effector to target ratio of 1:2. Parasite cultures were routinely confirmed mycoplasma negative. Following 6 h of stimulation, Brefeldin A and monensin (BD Pharmingen) were added (10 $\mu\text{g}/\text{mL}$). At 24 h, cells were washed, and surface and intracellular staining was performed with the following antibodies: from BD Pharmingen, anti-CD3-PerCP (SK7), anti-CD8-APC-H7 (SK1), anti-IFN γ -PE-Cy7 (B27), anti-IL-10-PE (JES3-19F1), and anti-TNF α -FITC (6401.1111); from Biolegend, anti-CD4-BV650 (OKT4), anti-CD14-Alexa700 (M5E2), anti-CD19-Alexa700 (HIB19), and anti-T-Bet BV421 (4B10); from Miltenyanti- $\gamma\delta\text{V}\delta 2$ -APC (123R3); from R&D anti-BLIMP-1 Alexa647 (646702); and from Invitrogen, Live/Dead aqua amine. Samples were acquired on a BD LSR2 flow cytometer with FACSDiva. A median of 121,000 CD4 T cells were collected (IQR 98,310–144,000, minimum 10,000, maximum 197,000).

Flow cytometry data were analyzed using FlowJo software (Tree Star, San Carlos, CA, USA) and Pestle (version 1.7)/Spice (version 5.3; M. Roederer, Vaccine Research Center, National

Institute of Allergy and Infectious Diseases, National Institute of Health available at: <http://exon.niaid.nih.gov> (18). Color compensation was performed using single-color cell controls or beads stained for each fluorochrome. Responding cells were gated as lymphocytes/singlets/CD14⁻CD19⁻Aqua⁻/CD3⁺γδVδ2⁻/CD8⁻/CD4⁺. Cytokine production was gated as CD4 producing IFNγ, IL-10, or TNFα, and Boolean gating was performed to categorize cells into subsets (Figure S1 in Supplementary Material). To calculate frequencies of *Pf*-specific CD4 T cells, background responses to uninfected RBCs were subtracted from each subset (Figure S2 in Supplementary Material). For data analysis, IFNγ⁺/IL10⁺/TNFα⁺ and IFNγ⁺/IL10⁺/TNFα⁺ responses were combined. Data were analyzed as the frequency of each subset as % of total CD4 T cells. To assess the composition of the *Pf*-specific response, total IFNγ, IL10, or TNFα frequencies or specific subsets as enumerated *via* Boolean gating were divided by the frequency of total responding CD4⁺ T cells and multiplied by 100 to calculate the % of total response.

Statistical Data Analysis

All statistical methods were performed using Prism 4 (GraphPad), STATA version 12 (College Station), or SPICE v.5.3 version 5.3; M. Roederer, Vaccine Research Center, National Institute of Allergy and Infectious Diseases, National Institute of Health available at: <http://exon.niaid.nih.gov> (18). Associations between dMER and age with probability of infection were calculated using Spearman's correlations and linear regression analysis. To assess relationships between age and dMER with retrospective odds of infection measured at quarterly routine assessments, the odds of any infection (defined as either LAMP positive or blood smear positive with or without symptoms) were calculated using multilevel mixed-effects logistic regression, accounting for repeat measures within individuals and clustered on household to account for multiple children in each individual household.

For CD4 T-cell responses, frequencies and proportions of responses were compared with Wilcoxon rank sum for binary variables, Kruskal–Wallis for group variables (age groups: 0–3, >3–7, >7 years), and *via* Spearman's rank correlation for continuous variables. For multivariate analysis, associations were made *via* linear regression, with the frequencies of CD4 T-cell responses log transformed, and predictor variables age (linear), current PCR positive infection (dichotomous), and dMER (categorical 0–8, >8–40, >40–80, >80 female *Anopheles*/house/day) assessed concurrently where indicated. To assess parasite antigen burden during infection in the 3 months prior to the immunology blood draw, parasite density (log transformed) was calculated from blood-smear of most recent infection.

To assess relationships between cross-sectional CD4 T-cell responses and the prospective odds of infection measured at repeated, quarterly routine assessments, the odds of any infection (defined as either LAMP positive or blood smear positive with or without symptoms) and the odds of symptoms when patent infected (defined as malaria when patent blood smear infection detected) were calculated using multilevel mixed-effects logistic regression, accounting for repeat measures within individuals and clustered on household to account for multiple children in each individual household. In multivariate analysis, odds ratios

for infection risk were adjusted for age (linear), dMER (categorical 0–8, >8–40, >40–80, >80 mosquitos/household/day) and PCR positive infection at blood draw.

To assess relationships between CD4 T-cell responses and parasite burden during asymptomatic infection, the geometric mean parasite burden across all detected infections (LAMP positive and blood smear positive) during routine visits was calculated. Associations with CD4 T-cell response were assessed with multivariate logistical regression controlling for age and infection status at time of sampling.

RESULTS

Study Cohort and Clinical Outcomes

We performed a cross-sectional study of 265 children (aged 6 months to 10 years) enrolled in a longitudinal observational cohort in Nagongera, Uganda (Table 1) (14). This region has very high *Pf* malaria transmission, with an estimated annual entomological inoculation rate (aEIR) of 310 bites per person year (15). The malaria epidemiology of this cohort has previously been described (14). Briefly, parasite prevalence is high, increasing from 0.15 at 6 months to >0.3 by 4 years of age. Malaria incidence peaks at approximately four cases/year at age 3, and then declines (Table 1; Figure S3A in Supplementary Material). Consistent with these prior results, at the time of sampling 29% ($n = 77$) of children in our study had asymptomatic *Pf* infection detectable by blood smear ("patent" infection), and an additional 11% ($n = 29$) had subpatent *Pf* infection detectable by PCR. Thus, in total, 40% ($n = 106$) of our study population had asymptomatic infection (patent or subpatent) at time of sampling. Eighty percent ($n = 211$) of children had a blood smear positive parasite infection in the 3 months prior to sampling, at which the median log₁₀ parasite density was 3.9 parasites/μL, IQR 3.3–4.6. Parasite density during recent infection correlated inversely with age ($\rho = -0.52$, $p < 0.0001$, Figure S3B in Supplementary Material).

Blood was drawn for immunological analysis at a single cross-sectional time point, after which children were followed for 1 year, and the odds of parasite infection (patent and subpatent) and symptomatic malaria were assessed during quarterly clinic visits (Table 1). Increasing age was associated with increased odds of any infection (subpatent LAMP positive or patent blood smear positive with or without symptoms, OR 1.17, 95% 1.08–1.27, $p < 0.001$, Table S1 in Supplementary Material), consistent with prior reports in this cohort (14). For every increased year of age, there was a 15% reduced odds of malaria (OR 0.85, 95% CI 0.80–0.92 $p < 0.001$), consistent with the gradual development of clinical immunity. In order to control for the confounding factor of heterogeneity in exposure to *Plasmodium* transmission vectors in protection analyses, household mosquito counts were used to calculate an individual dMER in the year following blood draw (median 27.3 IQR 16.5–37.1 *Anopheles*/house/day, Figure S3C in Supplementary Material). After controlling for age and clustering by household, dMER was strongly associated with an increased odds of infection in the year following blood draw (OR 7.6, $p = 0.007$ for dMER > 80 compared with

dMER 0- < 8, Table S1 in Supplementary Material), suggesting that this measure was able to account for some heterogeneity of exposure within the cohort.

Asymptomatic Parasitemia Associated With a Lower Frequency of Circulating *Pf*-Specific CD4 T Cells

Plasmodium falciparum-specific CD4 T-cell production of IFN γ , IL10, and TNF α was measured by flow cytometry following stimulation of PBMCs with *Pf*-infected RBCs. Responding cells were analyzed as the frequency of total CD4 T cells. All individuals exhibited a measurable CD4 T-cell response to malaria, and among cytokine-producing CD4 T cells, on average 58% were monofunctional (produced a single cytokine),

36% coproduced two cytokines, and 4% coproduced all three cytokines. CD4 T cells producing IFN γ , IL10, or both, dominated the response (Figures 1A,B), consistent with previous observations (7–9). In children with asymptomatic infection (patent or subpatent) at time of blood draw, we observed a lower frequency of total *Pf*-specific CD4 T cells (Figure 1C), and of CD4 T cells producing any of the three cytokines (IFN γ , IL10, and TNF α), as well as all multi-cytokine-producing combinations defined by Boolean gating (Figure 1D; Figure S4A in Supplementary Material). The lower frequency of *Pf*-specific CD4 T cells among parasitemic children remained significant in multivariate analysis after controlling for both household levels of mosquito exposure (dMER) and age (Table S2 in Supplementary Material). There was no difference in the frequency of total CD4 T cells, as a percent of CD3 T cells ($p = 0.51$,

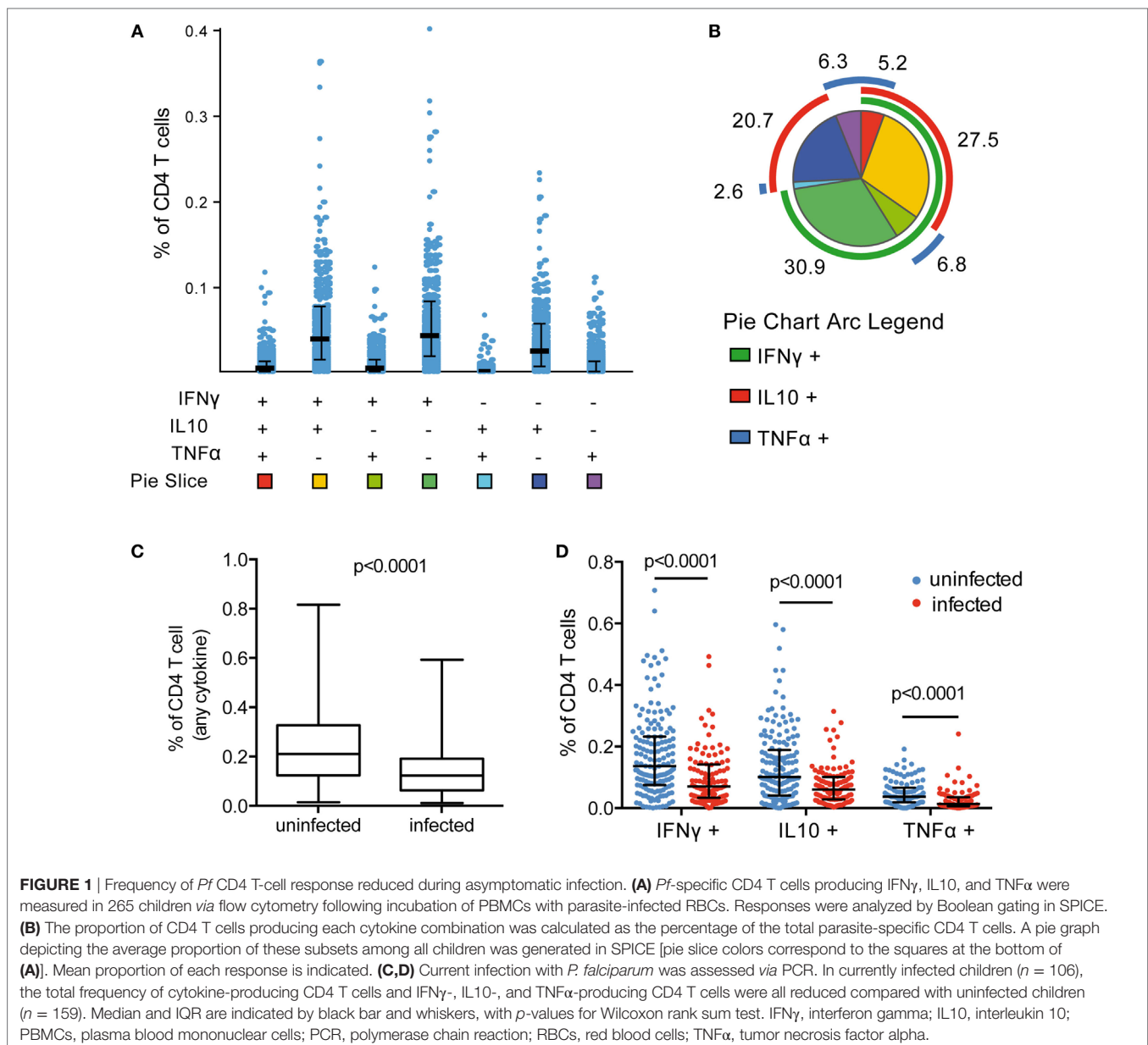


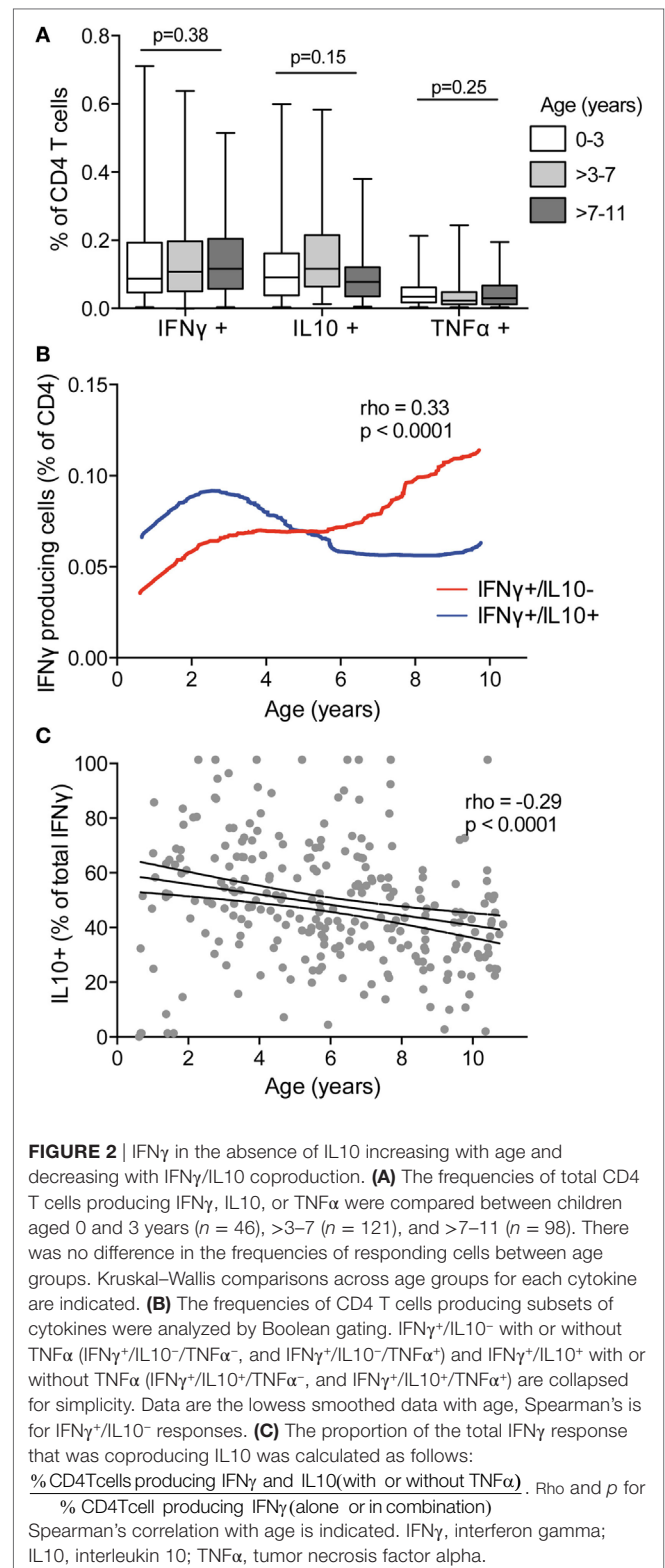
Figure S5A in Supplementary Material) or as a percent of total lymphocytes ($p = 0.71$, Figure S5B in Supplementary Material). This finding is consistent with the hypothesized trafficking of *Pf*-specific CD4 T cells to inflamed sites during active parasite infection (19, 20). The composition of the *Pf*-specific response was also investigated by calculating the proportion of each cytokine-producing combination among the total *Pf*-specific CD4 T-cell population. All subsets of CD4 T-cell responses were reduced during *Pf* infection; hence, there was no difference in the proportion of these subsets between infected and uninfected children after controlling for age (Figure S4B in Supplementary Material).

Coproduction of IL10 by *Pf*-Specific IFN γ -Producing CD4 T Cells Declining with Age

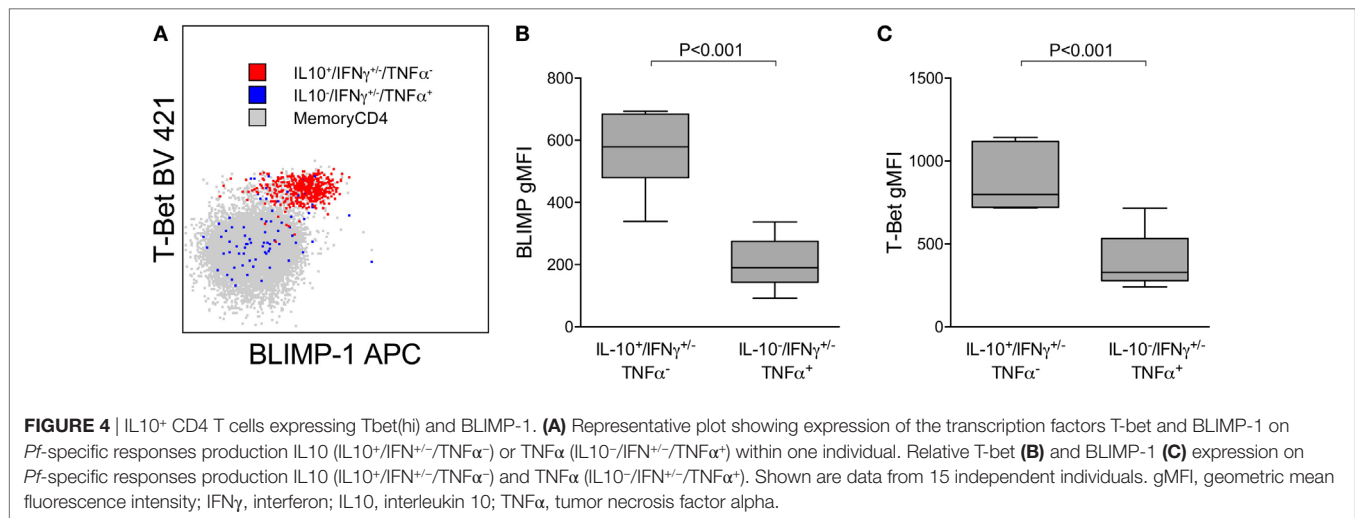
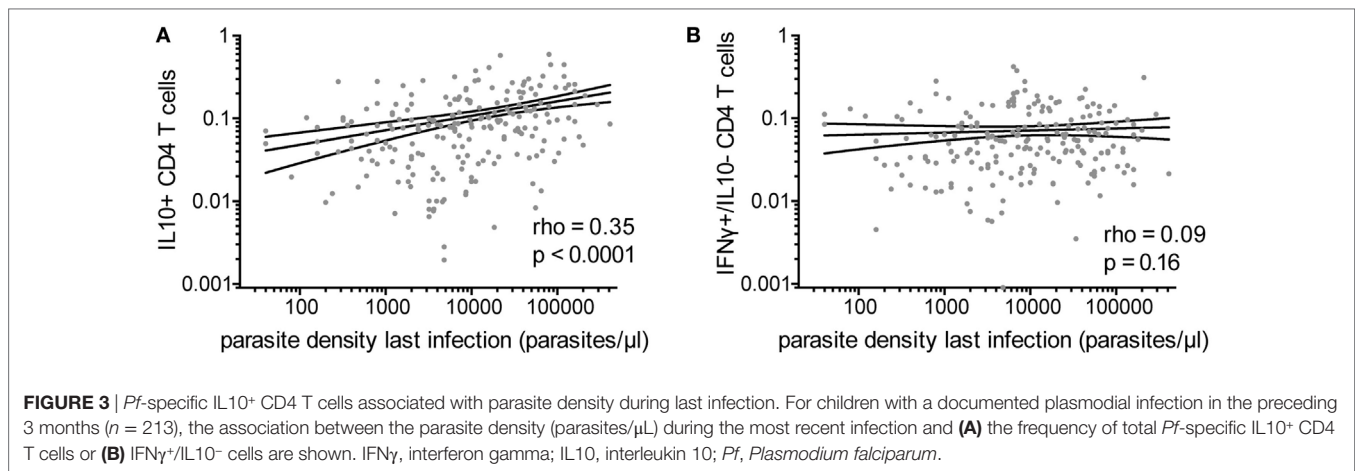
Several murine and human studies have suggested a role for T cells producing the canonical Th1 cytokines IFN γ and TNF α in clearance of parasite infection, whereas T-cell production of IL10, often in combination with IFN γ , has been postulated to prevent immunopathology at the expense of parasite clearance [reviewed in Ref. (3)]. To examine how production of these cytokines by *Pf*-specific CD4 T cells changes with age, we compared children in three age strata (0–3, >3–7, and >7–11 years) spanning the age range during which clinical immunity to malaria typically emerges. We found no difference in the frequencies of total IFN γ -, IL10-, and TNF α -producing CD4 T cells across the different age strata (Figure 2A). However, when CD4 T-cell functional subsets were defined based on specific mono- or multifunctional subsets, several age-based trends became apparent. With increasing age, there was an increase in the frequency of *Pf*-specific CD4 T cells that produced IFN γ (with or without TNF α) but lacked IL10 production ($\rho = 0.33$, $p = 0.001$), whereas the frequency of IFN γ ⁺/IL10⁺ coproducing cells increased from 6 months to 3 years, and then declined (age < 3 $\rho = 0.41$, $p = 0.005$ and age ≥ 3 $\rho = -0.17$, $p = 0.01$, Figure 2B). In parallel, among IFN γ -producing CD4 T cells, the proportion that coproduced IL10 declined across all ages, from 6 months to 10 years ($\rho = -0.29$, $p < 0.001$, Figure 2C). These associations remained significant after accounting for current parasite infection and dMER (adjusted regression Coeff. -1.9 , $p = 0.001$). There was no association between age and IL10 or TNF α monofunctional CD4 T cells.

IL10 Production by CD4 T Cells Associated With Recent High-Density Parasite Infection

Because IFN γ /IL10 CD4 T-cell responses have been associated with high antigen burden in other systems (21, 22), we assessed the relationship of *Pf*-specific responses and parasite density during the most recent infection (within 3 months prior to blood draw). Among the 80% of children who had a parasite infection in the preceding 3 months (with or without symptoms), there was a highly significant positive correlation between the frequencies of *Pf*-specific total IL10 producing CD4 T cells



and parasite density during infection ($\rho = 0.35$, $p < 0.0001$, Figure 3A). This relationship was seen with both IFN γ /IL10 coproducing and IL10 monofunctional (IFN γ ⁻/IL10⁺)



(Spearman's $\rho = 0.37$ $p < 0.0001$ and $\rho = 0.2$ $p = 0.004$, respectively). Parasite density was not associated with the frequency of CD4 T cells producing IFN γ without IL10 (**Figure 3B**) or TNF α responses (monofunctional or in combination with IFN γ). The total IL10 response and frequency of IFN γ /IL10 coproducing cells, but not IL10 single-producing cells, were weakly associated with malaria incidence in the preceding year ($\rho = 0.14$, $p = 0.02$, $\rho = 0.16$, $p = 0.01$ and $\rho = 0.026$, $p = 0.67$, respectively), consistent with prior reports (8). We did not observe any associations between household mosquito exposure (dMER) and IL10 production by *Pf*-specific CD4 T cells. While younger children tended to have higher parasite densities (Figure S1B in Supplementary Material), age did not fully explain the relationship between IL10-producing cells and parasite density during recent infection, as the association with parasite density and total IL10 or IFN γ /IL10 coproducing cells remained significant after controlling for age, dMER, and current infection (adjusted regression coefficient for total IL10 0.15, $p < 0.001$ and for IFN γ ⁺/IL10⁺ cells 0.16, $p < 0.001$).

Pf-Specific IL10-Producing CD4 T Cells Expressing BLIMP-1

We have previously shown that *Pf*-specific IFN γ /IL10 coproducing cells express the canonical Th1 transcription factor Tbet and are not FoxP3⁺ regulatory T cells (8). IL-10 in Th1 CD4 cells may be expressed in part to limit inflammation, at the cost of impaired pathogen clearance (23). Recent reports have also shown that the transcriptional regulator BLIMP-1 is required to program Th effectors into IL-10 producers in murine models of chronic infection (24, 25) [including *Plasmodium* (13)]. We assessed Tbet and BLIMP-1 expression among *Pf*-cytokine-producing cells (**Figure 4A**) and found that levels of Tbet were significantly higher on IL10 producing cells than on IFN γ or TNF α cells that did not produce IL10 (**Figure 4B**). Furthermore, BLIMP-1 was highly expressed among *Pf*-specific IL10-producing CD4 T cells, but not on IFN γ or TNF α cells that did not produce IL10 (**Figure 4C**). Taken together, these data suggest that IL10 production by *Pf*-specific CD4 T cells is associated with high-parasite antigen burden in children heavily exposed to malaria, is independently influenced by age, and may be induced through

expression of the transcriptional regulator BLIMP-1, as recently reported in murine models (13).

Relationship of the CD4 T-Cell Response to Protection from *Pf* Infection and Clinical Malaria

Prospective Protection from *Pf* Infection

Mounting evidence suggests that the immune mechanisms underlying protection from *Pf* infection (or restriction of parasite growth) may be distinct from those that mediate “clinical immunity,” or protection from symptomatic malaria. To investigate the role of cytokine-producing CD4 T cells in both aspects of naturally acquired immunity, we first analyzed the relationship between *Pf*-specific CD4 T-cell responses and protection from any *Pf* infection during 1 year of prospective follow-up. Subjects were assessed during routine quarterly visits for infection detected by blood smear (with or without symptoms) or by the sensitive LAMP assay (16). In univariate analysis, a higher total frequency or proportion of total TNF α -producing

CD4 T cells was associated with a lower risk of infection (any infection, blood smear, or LAMP detected; $p = 0.04$ and 0.007 , **Figure 5A**; Table S3 in Supplementary Material). However, after adjusting for age, dMER, and infection status at sampling (PCR and/or blood smear positive infection), these relationships were not significant ($p = 0.55$ and 0.26 ; Table S3 in Supplementary Material). In contrast, the proportion of cells producing IFN γ without IL10 was associated with a trend to *increased* prospective risk of infection in univariate analysis, but this was not significant following adjustment for dMER and other covariates (OR 1.01 for a 1% increase in IFN γ production in the absence of IL10, $p = 0.06$, Table S3 in Supplementary Material). There was no association between the frequency of total IFN γ , total IL10, nor other subsets of CD4 T-cell responses and prospective risk of infection (**Figure 5A**; Table S3 in Supplementary Material). In summary, among highly exposed children, all of whom had a measurable *Pf*-specific CD4 T-cell response, neither the frequency of these cells nor their cytokine production profiles correlated with prospective protection from infection after adjustment for household exposure intensity.

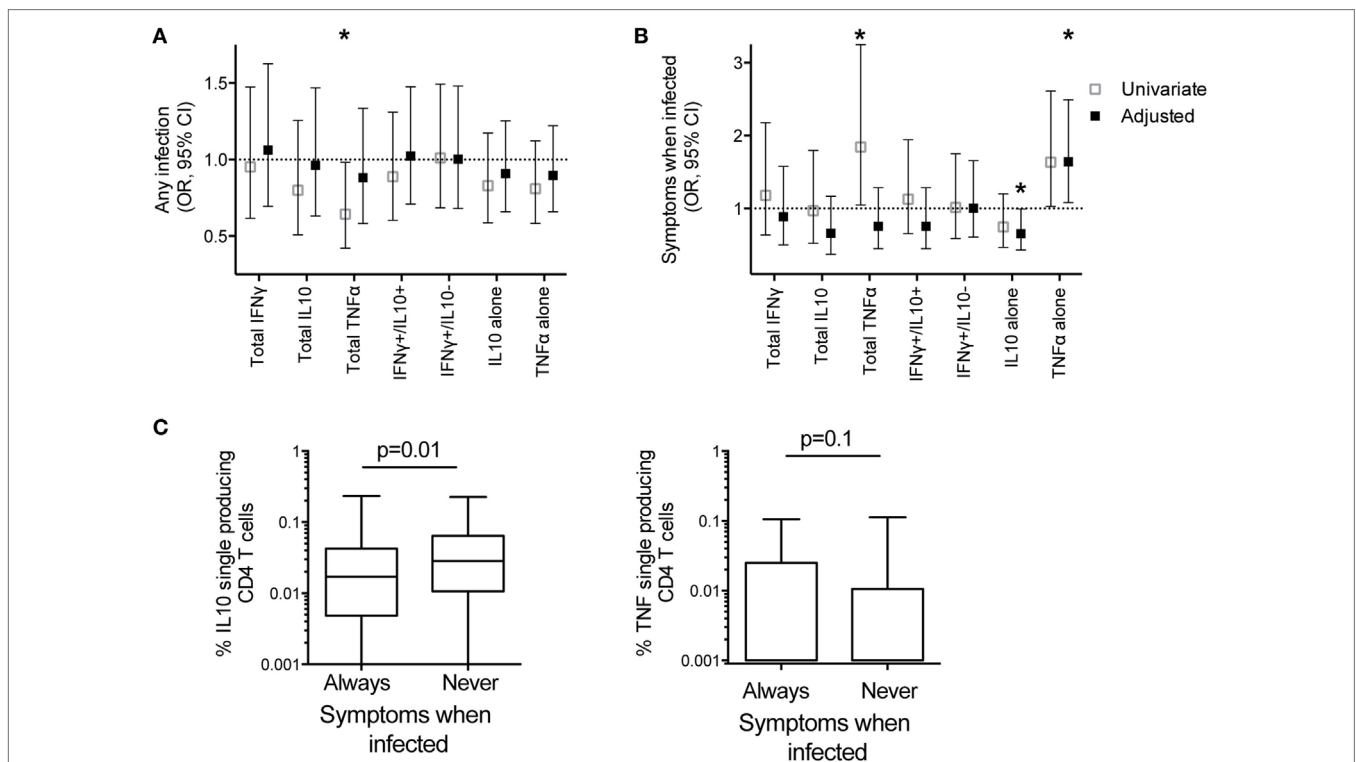


FIGURE 5 | IL10 single-producing CD4 T cells associated with protection from symptomatic malaria. The associations between frequencies of *Pf*-specific total CD4 T cells producing IFN γ , IL10, TNF α , or specific subsets of responses (IFN γ +/IL10+, and IFN γ -/IL10- with or without TNF α , and IL10+ and TNF α + single-producing CD4 T cells) with clinical outcomes in the year following blood draw were calculated by generalized estimate equations with robust SEs accounting for repeated measures within patients; **(A)** Odds ratios for associations with any infection (LAMP positive or blood smear positive). Data are univariate or adjusted for age, mosquito exposure (dMER), and bloodsmear and PCR positive infection at time of sampling, clustered on household. **(B)** Odds ratios for associations with symptoms when infected. Data are univariate, or adjusted for age and bloodsmear and PCR positive infection at blood draw. * $p < 0.05$. **(C)** The frequencies of *Pf*-specific IL10+ single-producing CD4 T and TNF α + single-producing CD4 T cells between children who had at least one blood smear positive infection, who were always symptomatic when infected ($n = 102$), compared with those who were never symptomatic ($n = 26$) when infected in the year following blood draw p -values based on Wilcoxon rank sum test. IFN γ , interferon gamma; IL10, interleukin 10; *Pf*, *Plasmodium falciparum*; dMER, daily mosquito exposure rate; LAMP, loop-mediated isothermal amplification; PCR, polymerase chain reaction; TNF α , tumor necrosis factor alpha.

Prospective Protection from Clinical Malaria Once Infected

Although not all infections result in symptomatic malaria and asymptomatic infections increase with age and prior exposure, we separately analyzed the conditional probability that an individual developed symptomatic malaria, given that s/he had a patent blood smear positive infection. After controlling for age and infection at time of sampling (PCR and/or blood smear positive infection), higher frequencies of *Pf*-specific monofunctional IL10 CD4 T cells were associated with a *decreased* odds of symptoms, given patent infection (adjusted OR 0.66 95% CI 0.43–0.99, $p = 0.05$, **Figure 5B**; Table S4 in Supplementary Material). In contrast, the frequency of *Pf*-specific monofunctional TNF α CD4 T cells was associated with an *increased* odds of developing symptomatic malaria, given patent *Pf* infection (OR 1.64 95% CI 1.08–2.49, $p = 0.02$, **Figure 5B**; Table S4 in Supplementary Material). Consistent with these findings, in the subsequent year, children whose patent infections were all asymptomatic had increased frequencies of *Pf*-specific monofunctional IL10 CD4 T cells ($p = 0.01$) compared with children who always experienced malaria when infected (total children $n = 128$, analysis includes non-routine visits to study clinic) (**Figure 5C**). While there was also a trend to decreased frequencies of *Pf*-specific monofunctional TNF α CD4 T cells in children who always were asymptomatic when infected, this association was not statistically significant ($p = 0.1$). There was no association between the frequency of other functional subsets and the odds of symptoms given patent infection (**Figure 5B**).

DISCUSSION

Prior studies in both humans and animal models support an important role for CD4 T cells in mediating immunity to malaria [reviewed in Ref. (3)]. However, the factors influencing functional differentiation of *Pf*-specific CD4 T cells and the role of specific cytokine-producing subsets in protective immunity remain poorly understood. Here, in a large cohort of children aged 6 months to 10 years, we found that recurrent and/or high-density *Pf* parasitemia was associated with an IL10-dominant CD4 T-cell phenotype, particularly in younger children. *Pf*-specific IL10 production from CD4 T cells, specifically in the absence of IFN γ coproduction, was associated with a reduced likelihood of febrile malaria upon *Pf* infection. In contrast, our data suggest that monofunctional TNF α CD4 T cells may be associated with a higher likelihood of symptoms once infected.

Our data bolster the existing evidence that protection from *Pf* infection and protection from clinical malaria are mediated by distinct immunological processes. In our cohort, the prospective risk of infection increased between 0 and 10 years of age as reported previously (26), possibly due to increasing body surface area (27), behavioral factors such as bed net usage (28) and/or treatment patterns due to increasing immunity. In contrast, the risk of symptomatic malaria and parasite density during infection declined over this age range. These observations are in agreement with those of Tran et al., who reported

no difference in time-to-infection by age among seasonally exposed Malian adults and children (2). Taken together, these findings support the notion that the age-associated clinical immunity observed among residents of endemic regions does not confer sterile protection against *Pf* parasitemia. However, parasite density declined notably over this age interval, indicating the emergence of an adaptive immune response capable of restricting parasite growth and limiting antigen burden. Identifying immune correlates of protection from *Pf* infection and clinical malaria in naturally exposed populations has been difficult for several reasons, including the challenge of accounting for heterogeneity in exposure to infected mosquitoes. Our cohort has the distinct advantage of having a rich longitudinal clinical dataset as well as measures of mosquito exposure both prior to and following the blood draw, enabling evaluation of both the determinants of the CD4 response and correlates of prospective protection from both parasitemia and clinical malaria.

Consistent with our prior observations, the majority of *Pf*-specific CD4 T cells in heavily exposed Ugandan children produced the immunoregulatory cytokine IL10 (7–9). We show that CD4 IL10 production is associated with high-parasite antigen burden, consistent with other infections as well as non-infectious disease models (21, 29). Secretion of IL10 by CD4 T cells may attenuate pathogen-induced immunopathology by both directly inhibiting T-cell cytokine production and proliferation, and limiting the function of antigen presenting cells. We and others have shown that this IL10 is produced largely by CD4 T cells expressing the Th transcription factor Tbet, many of which coproduce IFN γ . Our prior data suggest that these cells appear consistent with “early effector memory” cell phenotype (CD45RA⁻, CCR7⁻, CD27⁺) (8), whereas *Pf*-specific CD4 T cells producing inflammatory cytokines IL2 and TNF α are more consistent with “central memory” phenotypes (CD45RA⁻CCR7⁺) (7). Although IL-10 can be produced by a variety of CD4 T-cell subsets, IL-10 production by using the Th1 subset has been shown to be required for attenuation of morbidity and immune-mediated pathology during primary murine malaria infection (30, 31) and other protozoal infections (11, 12). Here we show that *Pf*-specific IL10-producing CD4 T cells in children express the transcription factor BLIMP-1, a transcriptional regulator recently shown to be critically dependent for IL-10 production from murine “T_R1 cells” (13), further supporting the notion that IL10-producing *Pf*-specific CD4 T cells are Th1 origin. In contrast *Pf*-specific CD4 T cells producing TNF α do not express BLIMP-1 and express significantly lower levels of Tbet.

In our cohort, it was specifically monofunctional IL10 CD4 T cells that were associated with a reduced risk of symptomatic malaria following *Pf* infection; high frequencies of these cells were significantly associated with reduced odds of symptomatic malaria when infection. This is consistent with studies from children who are seasonally exposed to malaria, where IL-10 production following *in vitro* stimulation of PBMCs with malaria antigens was higher among children who persistently harbored parasites through the dry season, but not in children lacking recent parasite exposure (10). Furthermore, a recent

study indicated that patients with severe malaria had reduced proportions of IL10 single-producing CD4 T cells compared with those with uncomplicated malaria, while the proportions of IFN γ single-producing or IFN γ /IL10 coproducing CD4 T cells were similar between disease phenotypes (32). *In vitro* stimulation studies have shown that Th1 IFN γ CD4 T cells can switch to IFN γ /IL10 coproducing, and then to IL10 single-producing CD4 T cells with repeated stimulation (33). In our cohort, both IFN γ /IL10 coproducing and IL10 single-producing subsets were associated parasite density during recent infection, while only IL10 single-producing responses were associated with protection from symptomatic disease. Together, these data suggest that a final switch from IFN γ to IL10 production among malaria-specific CD4⁺ T cells may play a role for in mediating tolerance to malaria. Importantly, exploitation of this pathway has recently been shown to be effective as antigen-specific immunotherapy for autoimmune disease (34).

Our data also indicate that biological age influences CD4 T-cell production of IL10 *independently* of antigen burden, with younger children biased toward a more IL10-skewed CD4 T-cell response, suggesting an inherent age-related developmental difference in the cellular immune response (35). In areas of high malaria transmission, untangling the influence of age and exposure on the immune response is complicated by the colinearity of age and cumulative parasite exposure. Here we used detailed clinical and entomological data to show that age and exposure independently influence the *Pf*-specific CD4 T-cell response. Innate immune responses to T-like receptor stimulation are dominated by regulatory cytokines including IL10 in early life, and the production of cytokines that support Th1 CD4 T-cell development are one of the last to reach adult levels (36–38). This regulatory bias in early life may in part help to explain observations made among Indonesian migrants moving from areas with little or no malaria to high-transmission regions where young children with their first malaria infection were far *less* susceptible to severe malaria and death than adults, but adults developed immunity to mild malaria more rapidly than children (39–42). Despite the age-associated decline in IL10 production, even the oldest children in our cohort exhibited higher frequencies of IL10 CD4 T cells and lower frequencies of TNF α production by CD4 T cells than adults at the same study site (9), which may be related to continued immune maturation and/or to the much lower rates of patent *Pf* parasitemia among adults in this cohort (26).

Our data suggest that in contrast to IL10, *Pf*-specific monofunctional CD4 cells producing TNF α may be associated with a *higher* risk of clinical disease once infected. While the strength and significance of this relationship was less clear in the current study, it is supported by our previous finding that prevalence of asymptomatic parasite infection was reduced in 4-year-old children with high frequencies of *Pf*-specific TNF α -monofunctional CD4 T cells (8). In the present cohort, TNF α -producing CD4 cells were also associated with protection from infection in univariate analysis, but this association was not significant after

controlling for exposure intensity and age. This result suggests that TNF α production from CD4 T cells may be associated with low parasite exposure, highlighting the importance of accounting for heterogeneous exposure to *Pf*-infected mosquitoes in cohort studies examining correlates of prospective infection risk. Together our findings underscore the delicate balance of CD4 T-cell responses required to mediate protection from infection and disease. We did not find any associations between CD4 production of IFN γ and protection from malaria, consistent with our previous studies in this high-transmission setting (7, 8). This is in contrast to previous reports finding such associations when looking at IFN γ responses *via* methods that assess total cytokine from PBMCs (4). These differing results reflect important differences between the use of multi-parametric flow cytometer to assess individual subsets of CD4 T-cell responses versus methods that evaluate global assessments of cytokine production which are unable to distinguish between IFN γ from CD4 T cells, with that from other sources—for example from $\gamma\delta$ T cells where IFN γ production may have a differing role in protection and disease (43–45).

This study has several limitations inherent in its cross-sectional sampling of individuals, including the inability to assess the functional differentiation of CD4 T-cell responses within individuals across time. In addition, we measured CD4 production of only three cytokines, but other CD4 cytokine-producing phenotypes may also be important (7, 46). Furthermore, although we observed significant heterogeneity in environmental exposure to *Pf* based on entomological measures, the vast majority of cohort participants had very high levels of exposure intensity, such that even children with the lowest levels of exposure in this study cohort had very high exposure relative to most malaria-endemic communities. In a study comparing children and adults from the current study site to those in a nearby low-transmission site, we have previously shown that exposure strongly influences the functional phenotype of *Pf*-specific CD4 T-cell responses (9). We did not observe marked differences based on exposure intensity in the current study, perhaps due to “saturated” mosquito exposure. Hence, our findings may not be applicable to other settings with lower transmission intensity. Lastly, while adjustment for entomological exposure helped to limit confounding by exposure intensity, it is possible that associations between *Pf*-specific CD4 T-cell profiles and prospective clinical outcomes may be driven by the impact of antigen burden on CD4 functional phenotype, rather than CD4-mediated immune protection.

In conclusion, in a large cohort of naturally exposed children, we have identified factors influencing the cytokine production profiles of *Pf*-specific CD4 T cells, with both exposure and age being independently associated with IL10 CD4 T-cell responses. Monofunctional IL10 CD4 T cells were associated with high antigen burden and/or repeated infections, and were associated with protection from symptoms once infected. These findings elucidate important factors that influence the development of *Pf*-specific CD4 T cells and their roles in human immunity to malaria.

ETHICS STATEMENT

This study was carried out in accordance with the recommendations of Uganda National Council of Science and Technology and the institutional review boards of the University of California, San Francisco, and Makerere University, with written informed consent from all adult subjects or parent/guardian of all study participants. All subjects gave written informed consent in accordance with the Declaration of Helsinki. The protocol was approved by the institutional review boards of the University of California, San Francisco (institutional review board number 11-05995; reference number 067647), and Makerere University.

AUTHOR CONTRIBUTIONS

Conceptualization: MB, PJ, and MF. Methodology: MB, PJ, MF, and KB. Software: BG. Formal analysis: MB, PJ, BG, GD, and MF. Investigation: MB, KB, TM, HV, LF, and AS. Contributed reagents/materials/analysis tools: FN, KN, SW, ES, JR, BG, EA, and MK. Wrote the paper: MB, PJ, LF, BG, GD, and MF. All authors contributed to editing and revising manuscript.

ACKNOWLEDGMENTS

We are grateful to all the parents and guardians for kindly giving their consent and to the study participants for their cooperation. We thank all the members of the study teams for their dedication and excellent work. We thank Rachel Budker for critical reading of the manuscript.

REFERENCES

- World Health Organization. *World Malaria Report*. Geneva: WHO (2017). p. 1–186.
- Tran TM, Li S, Doumbo S, Doumtabe D, Huang C-Y, Dia S, et al. An intensive longitudinal cohort study of Malian children and adults reveals no evidence of acquired immunity to *Plasmodium falciparum* infection. *Clin Infect Dis* (2013) 57:40–7. doi:10.1093/cid/cit174
- Stanisic DI, Good MF. Examining cellular immune responses to inform development of a blood-stage malaria vaccine. *Parasitology* (2016) 143: 208–23. doi:10.1017/S0031182015001092
- King T, Lamb T. Interferon- γ : the Jekyll and Hyde of malaria. *PLoS Pathog* (2015) 11:e1005118. doi:10.1371/journal.ppat.1005118
- Freitas do Rosario AP, Langhorne J. T cell-derived IL-10 and its impact on the regulation of host responses during malaria. *Int J Parasitol* (2012) 42:549–55. doi:10.1016/j.ijpara.2012.03.010
- Körner H, McMorran B, Schlüter D, Fromm P. The role of TNF in parasitic diseases: still more questions than answers. *Int J Parasitol* (2010) 40:879–88. doi:10.1016/j.ijpara.2010.03.011
- Jagannathan P, Bowen K, Nankya F, McIntyre TI, Auma A, Wamala S, et al. Effective antimalarial chemoprevention in childhood enhances the quality of CD4+ T cells and limits their production of immunoregulatory interleukin 10. *J Infect Dis* (2016) 214:329–38. doi:10.1093/infdis/jiv147
- Jagannathan P, Eccles-James I, Bowen K, Nankya F, Auma A, Wamala S, et al. IFN γ /IL-10 co-producing cells dominate the CD4 response to malaria in highly exposed children. *PLoS Pathog* (2014) 10:e1003864. doi:10.1371/journal.ppat.1003864
- Boyle MJ, Jagannathan P, Bowen K, McIntyre TI, Vance HM, Farrington LA, et al. Effector phenotype of *Plasmodium falciparum*-specific CD4+ T cells is influenced by both age and transmission intensity in naturally exposed populations. *J Infect Dis* (2015) 212:416–25. doi:10.1093/infdis/jiv054

FUNDING

This work was supported by National Institute of Health, National Institute of Allergy and Infectious Diseases (<http://www.niaid.nih.gov/Pages/default.aspx>) (grant number R01AI093615 to MF, grant number K24AI113002 to MF, grant number U19AI089674 to MF, BG, and GD, and grant number K23 AI100949 to PJ); the University of California San Francisco, Centers for AIDS Research (<http://cfar.ucsf.edu/>) (grant number P30AI027763 to MF); the University of California San Francisco Resource Allocation Global Health Policy Award Program (<http://global-healthsciences.ucsf.edu/>) (MB); the Burroughs Wellcome Fund/American Society of Tropical Medicine and Hygiene (<http://www.astmh.org/>) (PJ); and the National Health and Medical Research Council Australia (<https://www.nhmrc.gov.au/>) Early-Career Fellowship (grant number GNT1071736 to MB). The Burnet Institute is supported by the National Health and Medical Research Council Australia Infrastructure for Research Institutes Support Scheme and by the Victorian State Government Operational Infrastructure Support. The funders had no role in study design, data collection and analysis, decision to publish, or preparation of the manuscript.

SUPPLEMENTARY MATERIAL

The Supplementary Material for this article can be found online at <http://www.frontiersin.org/article/10.3389/fimmu.2017.01329/full#supplementary-material>.

- Portugal S, Moebius J, Skinner J, Doumbo S, Doumtabe D, Kone Y, et al. Exposure-dependent control of malaria-induced inflammation in children. *PLoS Pathog* (2014) 10:e1004079. doi:10.1371/journal.ppat.1004079
- Jankovic D, Kullberg MC, Feng CG, Goldszmid RS, Collazo CM, Wilson M, et al. Conventional T-bet(+)/Foxp3(-) Th1 cells are the major source of host-protective regulatory IL-10 during intracellular protozoan infection. *J Exp Med* (2007) 204:273–83. doi:10.1084/jem.20062175
- Anderson CF, Oukka M, Kuchroo VJ, Sacks D. CD4(+)/CD25(-)/Foxp3(-) Th1 cells are the source of IL-10-mediated immune suppression in chronic cutaneous leishmaniasis. *J Exp Med* (2007) 204:285–97. doi:10.1084/jem.20061886
- Montes de Oca M, Kumar R, de Labastida Rivera F, Amante FH, Sheel M, Faleiro RJ, et al. Blimp-1-dependent IL-10 production by Tr1 cells regulates TNF-mediated tissue pathology. *PLoS Pathog* (2016) 12:e1005398. doi:10.1371/journal.ppat.1005398
- Kanya MR, Arinaitwe E, Wanzira H, Katureebe A, Barusya C, Kigozi SP, et al. Malaria transmission, infection, and disease at three sites with varied transmission intensity in Uganda: implications for malaria control. *Am J Trop Med Hyg* (2015) 92:903–12. doi:10.4269/ajtmh.14-0312
- Kilama M, Smith DL, Hutchinson R, Kigozi R, Yeka A, Lavoy G, et al. Estimating the annual entomological inoculation rate for *Plasmodium falciparum* transmitted by *Anopheles gambiae* s.l. using three sampling methods in three sites in Uganda. *Malar J* (2014) 13:111. doi:10.1186/1475-2875-13-111
- Hopkins H, González JJ, Polley SD, Angutoko P, Ategeka J, Asimwe C, et al. Highly sensitive detection of malaria parasitemia in a malaria-endemic setting: performance of a new loop-mediated isothermal amplification kit in a remote clinic in Uganda. *J Infect Dis* (2013) 208:645–52. doi:10.1093/infdis/jit184
- Schwartz A, Baidjoe A, Rosenthal PJ, Dorsey G, Bousema T, Greenhouse B. The effect of storage and extraction methods on amplification of *Plasmodium*

- falciparum* DNA from dried blood spots. *Am J Trop Med Hyg* (2015) 92:922–5. doi:10.4269/ajtmh.14-0602
18. Roederer M, Nozzi JL, Nason MC. SPICE: exploration and analysis of post-cytometric complex multivariate datasets. *Cytometry A* (2011) 79:167–74. doi:10.1002/cyto.a.21015
 19. Hviid L, Kurtzhals JA, Goka BQ, Oliver-Commey JO, Nkrumah FK, Theander TG. Rapid reemergence of T cells into peripheral circulation following treatment of severe and uncomplicated *Plasmodium falciparum* malaria. *Infect Immun* (1997) 65:4090–3.
 20. Elhassan IM, Hviid L, Satti G, Akerstrom B, Jakobsen PH, Jensen JB, et al. Evidence of endothelial inflammation, T cell activation, and T cell reallocation in uncomplicated *Plasmodium falciparum* malaria. *Am J Trop Med Hyg* (1994) 51:372–9. doi:10.4269/ajtmh.1994.51.372
 21. Meiler F, Zumkehr J, Klunker S, Rückert B, Akdis CA, Akdis M. In vivo switch to IL-10-secreting T regulatory cells in high dose allergen exposure. *J Exp Med* (2008) 205:2887–98. doi:10.1084/jem.20080193
 22. Gabryšová L, Wraith DC. Antigenic strength controls the generation of antigen-specific IL-10-secreting T regulatory cells. *Eur J Immunol* (2010) 40:1386–95. doi:10.1002/eji.200940151
 23. O'Garra A, Vieira P. T(H)1 cells control themselves by producing interleukin-10. *Nat Rev Immunol* (2007) 7:425–8. doi:10.1038/nri2097
 24. Parish IA, Marshall HD, Staron MM, Lang PA, Brüstle A, Chen JH, et al. Chronic viral infection promotes sustained Th1-derived immunoregulatory IL-10 via BLIMP-1. *J Clin Invest* (2014) 124:3455–68. doi:10.1172/JCI66108
 25. Neumann C, Heinrich F, Neumann K, Junghans V, Mashreghi M-F, Ahlers J, et al. Role of Blimp-1 in programming Th effector cells into IL-10 producers. *J Exp Med* (2014) 211:1807–19. doi:10.1084/jem.20131548
 26. Rek J, Katrak S, Obasi H, Nayebare P, Katureebe A, Kakande E, et al. Characterizing microscopic and submicroscopic malaria parasitaemia at three sites with varied transmission intensity in Uganda. *Malar J* (2016) 15:470. doi:10.1186/s12936-016-1519-8
 27. Smith T, Maire N, Dietz K, Killen GF, Vounatsou P, Molineaux L, et al. Relationship between the entomologic inoculation rate and the force of infection for *Plasmodium falciparum* malaria. *Am J Trop Med Hyg* (2006) 75:11–8. doi:10.4269/ajtmh.2006.75.2_suppl.0750011
 28. Walldorf JA, Cohee LM, Coalson JE, Bauleni A, Nkanaunena K, Kapito-Tembo A, et al. School-age children are a reservoir of malaria infection in Malawi. *PLoS One* (2015) 10:e0134061. doi:10.1371/journal.pone.0134061
 29. Cardone J, Le Fric G, Vantourout P, Roberts A, Fuchs A, Jackson I, et al. Complement regulator CD46 temporally regulates cytokine production by conventional and unconventional T cells. *Nat Immunol* (2010) 11:862–71. doi:10.1038/ni.1917
 30. Freitas do Rosario AP, Lamb T, Spence P, Stephens R, Lang A, Roers A, et al. IL-27 promotes IL-10 production by effector Th1 CD4+ T cells: a critical mechanism for protection from severe immunopathology during malaria infection. *J Immunol* (2012) 188:1178–90. doi:10.4049/jimmunol.1102755
 31. Couper KN, Blount DG, Riley EM. IL-10: the master regulator of immunity to infection. *J Immunol* (2008) 180:5771–7. doi:10.4049/jimmunol.180.9.5771
 32. Mackroth MS, Abel A, Steeg C, Schulze zur Wiesch J, Jacobs T. Acute malaria induces PD1+CTLA4+ effector T cells with cell-extrinsic suppressor function. *PLoS Pathog* (2016) 12:e1005909. doi:10.1371/journal.ppat.1005909
 33. Kemper C, Chan AC, Green JM, Brett KA, Murphy KM, Atkinson JP. Activation of human CD4+ cells with CD3 and CD46 induces a T-regulatory cell 1 phenotype. *Nature* (2003) 421:388–92. doi:10.1038/nature01315
 34. Clemente-Casares X, Blanco J, Ambalavanan P, Yamanouchi J, Singha S, Fandos C, et al. Expanding antigen-specific regulatory networks to treat autoimmunity. *Nature* (2016) 530:434–40. doi:10.1038/nature16962
 35. Bertoletti A, Hong M. Age-dependent immune events during HBV infection from birth to adulthood: an alternative interpretation. *Front Immunol* (2014) 5:441. doi:10.3389/fimmu.2014.00441
 36. Kollmann TR, Crabtree J, Rein-Weston A, Blimkie D, Thommai F, Wang XY, et al. Neonatal innate TLR-mediated responses are distinct from those of adults. *J Immunol* (2009) 183:7150–60. doi:10.4049/jimmunol.0901481
 37. Kollmann TR, Levy O, Montgomery RR, Goriely S. Innate immune function by toll-like receptors: distinct responses in newborns and the elderly. *Immunity* (2012) 37:771–83. doi:10.1016/j.immuni.2012.10.014
 38. Corbett NP, Blimkie D, Ho KC, Cai B, Sutherland DP, Kallos A, et al. Ontogeny of toll-like receptor mediated cytokine responses of human blood mononuclear cells. *PLoS One* (2010) 5:e15041. doi:10.1371/journal.pone.0015041
 39. Baird JK, Basri H, Weina P, Maguire JD, Barcus MJ, Picarema H, et al. Sekartuti. adult Javanese migrants to Indonesian Papua at high risk of severe disease caused by malaria. *Epidemiol Infect* (2003) 131:791–7. doi:10.1017/S0950268803008422
 40. Baird JK, Jones TR, Danudirgo EW, Annis BA, Bangs MJ, Basri HP, et al. Age-dependent acquired protection against *Plasmodium falciparum* in people having two years exposure to hyperendemic malaria. *Am J Trop Med Hyg* (1991) 45:65–76. doi:10.4269/ajtmh.1991.45.65
 41. Baird JK. Age-dependent characteristics of protection v. susceptibility to *Plasmodium falciparum*. *Ann Trop Med Parasitol* (1998) 92:367–90. doi:10.1080/00034989859366
 42. Baird JK, Masbar S, Basri H, Tirtokusumo S, Subianto B, Hoffman SL. Age-dependent susceptibility to severe disease with primary exposure to *Plasmodium falciparum*. *J Infect Dis* (1998) 178:592–5. doi:10.1086/517482
 43. Jagannathan P, Kim CC, Greenhouse B, Nankya F, Bowen K, Eccles-James I, et al. Loss and dysfunction of Vδ2+γδ T cells are associated with clinical tolerance to malaria. *Sci Transl Med* (2014) 6:251ra117. doi:10.1126/scitranslmed.3009793
 44. Schofield L, Ioannidis LJ, Karl S, Robinson LJ, Tan QY, Poole DP, et al. Synergistic effect of IL-12 and IL-18 induces TIM3 regulation of γδ T cell function and decreases the risk of clinical malaria in children living in Papua New Guinea. *BMC Med* (2017) 15:114. doi:10.1186/s12916-017-0883-8
 45. Farrington LA, Jagannathan P, McIntyre TI, Vance HM, Bowen K, Boyle MJ, et al. Frequent malaria drives progressive Vδ2 T-cell loss, dysfunction, and CD16 up-regulation during early childhood. *J Infect Dis* (2016) 213:1483–90. doi:10.1093/infdis/jiv600
 46. Gitau EN, Tuju J, Karanja H, Stevenson L, Requena P, Kimani E, et al. CD4+ T cell responses to the *Plasmodium falciparum* erythrocyte membrane protein 1 in children with mild malaria. *J Immunol* (2014) 192:1753–61. doi:10.4049/jimmunol.1200547

Conflict of Interest Statement: The authors declare that the research was conducted in the absence of any commercial or financial relationships that could be construed as a potential conflict of interest.

Copyright © 2017 Boyle, Jagannathan, Bowen, McIntyre, Vance, Farrington, Schwartz, Nankya, Naluwu, Wamala, Sikyomu, Rek, Greenhouse, Arinaitwe, Dorsey, Kanya and Feeny. This is an open-access article distributed under the terms of the Creative Commons Attribution License (CC BY). The use, distribution or reproduction in other forums is permitted, provided the original author(s) or licensor are credited and that the original publication in this journal is cited, in accordance with accepted academic practice. No use, distribution or reproduction is permitted which does not comply with these terms.