

# UC Davis

## UC Davis Previously Published Works

### Title

Placenta-derived multipotent mesenchymal stromal cells: a promising potential cell-based therapy for canine inflammatory brain disease

### Permalink

<https://escholarship.org/uc/item/1zt6c52b>

### Journal

Stem Cell Research & Therapy, 11(1)

### ISSN

1757-6512

### Authors

Amorim, Rogério Martins

Clark, Kaitlin C

Walker, Naomi J

et al.

### Publication Date

2020-12-01

### DOI

10.1186/s13287-020-01799-0

### Copyright Information

This work is made available under the terms of a Creative Commons Attribution License, available at <https://creativecommons.org/licenses/by/4.0/>


Peer reviewed

RESEARCH

Open Access



# Placenta-derived multipotent mesenchymal stromal cells: a promising potential cell-based therapy for canine inflammatory brain disease

Rogério Martins Amorim<sup>1,2†</sup>, Kaitlin C. Clark<sup>1,3,4†</sup>, Naomi J. Walker<sup>1</sup>, Priyadarsini Kumar<sup>3,4</sup>, Kyle Herout<sup>3</sup>, Dori L. Borjesson<sup>1</sup> and Aijun Wang<sup>1,3,4,5\*</sup> 

## Abstract

**Background:** Canine inflammatory brain disease (IBD) is a severe inflammatory disorder characterized by infiltration of activated immune cell subsets into the brain and spinal cord. Multipotent mesenchymal stromal cells (MSCs) are a promising therapy for IBD, based on their potent pro-angiogenic, neuroprotective, and immunomodulatory properties. The aims of this study were to compare the immunomodulatory attributes of canine adipose-derived MSCs (ASCs) and placenta-derived MSCs (PMSCs) in vitro. These data will serve as potency information to help inform the optimal MSC cell source to treat naturally occurring canine IBD.

**Methods:** Indoleamine 2,3 dioxygenase (IDO) activity and prostaglandin E<sub>2</sub> (PGE<sub>2</sub>) concentration at baseline and after stimulation with interferon gamma (IFN $\gamma$ ) and/or tumor necrosis factor alpha (TNF $\alpha$ ) were measured from canine ASC and PMSC cultures. Leukocyte suppression assays (LSAs) were performed to compare the ability of ASCs and PMSCs to inhibit activated peripheral blood mononuclear cell (PBMC) proliferation. IDO activity and PGE<sub>2</sub>; interleukin (IL)-2, IL-6, and IL-8; TNF $\alpha$ ; and vascular endothelial growth factor (VEGF) concentrations were also measured from co-culture supernatants. Cell cycle analysis was performed to determine how ASCs and PMSCs altered lymphocyte proliferation.

(Continued on next page)

\* Correspondence: [aawang@ucdavis.edu](mailto:aawang@ucdavis.edu)

<sup>†</sup>Rogério Martins Amorim and Kaitlin C. Clark contributed equally to this work.

<sup>1</sup>Veterinary Institute for Regenerative Cures and Department of Pathology, Microbiology and Immunology, School of Veterinary Medicine, University of California, Davis, Davis, CA, USA

<sup>3</sup>Surgical Bioengineering Laboratory, Department of Surgery, School of Medicine, University of California, Davis, 4625 2nd Ave., Research II, Suite 3005, Sacramento, CA 95817, USA

Full list of author information is available at the end of the article



© The Author(s). 2020 **Open Access** This article is licensed under a Creative Commons Attribution 4.0 International License, which permits use, sharing, adaptation, distribution and reproduction in any medium or format, as long as you give appropriate credit to the original author(s) and the source, provide a link to the Creative Commons licence, and indicate if changes were made. The images or other third party material in this article are included in the article's Creative Commons licence, unless indicated otherwise in a credit line to the material. If material is not included in the article's Creative Commons licence and your intended use is not permitted by statutory regulation or exceeds the permitted use, you will need to obtain permission directly from the copyright holder. To view a copy of this licence, visit <http://creativecommons.org/licenses/by/4.0/>. The Creative Commons Public Domain Dedication waiver (<http://creativecommons.org/publicdomain/zero/1.0/>) applies to the data made available in this article, unless otherwise stated in a credit line to the data.

(Continued from previous page)

**Results:** Activated canine MSCs from both tissue sources secreted high concentrations of IDO and PGE<sub>2</sub>, after direct stimulation with IFN $\gamma$  and TNF $\alpha$ , or indirect stimulation by activated PBMCs. Both ASCs and PMSCs inhibited activated PBMC proliferation in LSA assays; however, PMSCs inhibited PBMC proliferation significantly more than ASCs. Blocking PGE<sub>2</sub> and IDO in LSA assays determined that PGE<sub>2</sub> is important only for ASC inhibition of PBMC proliferation. Activated ASCs increased IL-6 and VEGF secretion and decreased TNF $\alpha$  secretion, while activated PMSCs increased IL-6, IL-8, and VEGF secretion. ASCs inhibited lymphocyte proliferation via cell cycle arrest in the G0/G1 and PMSCs inhibited lymphocyte proliferation via induction of lymphocyte apoptosis.

**Conclusion:** Our results demonstrate that ASCs and PMSCs have substantial in vitro potential as a cell-based therapy for IBD; however, PMSCs more potently inhibited lymphocyte proliferation by inducing apoptosis of activated lymphocytes. These data suggest that the mechanism by which ASCs and PMSCs downregulate PBMC proliferation differs. Additional studies may elucidate additional mechanisms by which canine MSCs modulate neuroinflammatory responses.

**Keywords:** Multipotent progenitor cell, Mesenchymal stromal cell, Adipose tissue, Placenta, Canine, Animal model, Immunomodulation, Inflammatory brain disease, Multiple sclerosis, Translational research

## Background

Over the past decade, stem cell therapy has become a cornerstone in regenerative medicine therapies for many diseases. However, brain and spinal cord diseases represent a challenge in stem cell-based therapy, due to the multiplicity of cell types in the adult central nervous system (CNS) and the precision of cell interactions, in both space and time, required to enhance neuroregeneration [1]. Stem cell therapies for CNS injury are based on cell replacement, via the transplantation of neural progenitor cells, the stimulation of endogenous CNS stem cells, or on improvement of the microenvironment mediated by anti-inflammatory/immunomodulatory paracrine cell effects [2, 3]. However, challenges arise due to a lack of standardization of therapeutic interventions, variability in animal models of disease, alterations in timing and modality of cell application, and a lack of understanding of disease pathology [4].

Multipotent mesenchymal stromal cells (also known as mesenchymal stem cells; MSCs) derived from the bone marrow, adipose tissue, and birth-associated tissues, including umbilical cord, blood cord, amniotic fluid, and placenta, are the most common cell type investigated in cell-based therapy. Several reports have demonstrated positive effects of MSC therapy in a large number of disorders, including brain and spinal cord injuries, in laboratory animals, dogs, and humans [5, 6]. Dogs are increasingly recognized as important animal models for translational medicine because they have naturally occurring brain and spinal cord injuries, such as canine inflammatory brain disease (IBD), similar to multiple sclerosis (MS) in human beings [7–9].

Studies involving MSCs are increasing due to their immunomodulatory, anti-inflammatory, and tissue regenerative properties including the secretion of numerous

bioactive molecules leading to tissue regeneration [10, 11]. However, the mechanisms by which MSCs elicit positive effects on the damaged nervous system are not fully characterized. Mechanisms that may play an important role in neuroregeneration include the secretion of growth factors, antiapoptotic factors, neurotrophic factors, cytokines, and extracellular matrix proteins. The immunomodulatory and anti-inflammatory properties of MSCs are also implicated in their ability to protect and repair neurons. Together, these factors promote endogenous neuronal growth, promote neuro/gliogenesis, encourage synaptic connection from damaged neurons, recruit local oligodendrocyte precursors, reduce demyelination, stimulate angiogenesis, decrease apoptosis, reduce oxidative stress, modulate microglial activation, and regulate inflammation by suppressing pathological T, B, and natural killer (NK) cell responses [12–16]. Moreover, they can accelerate a shift from a predominance of pro-inflammatory Th1 cells toward an increase in the anti-inflammatory Th2 cells [17, 18]. Although controversial, some studies have suggested that MSCs can also migrate into the CNS lesion and differentiate into neurons or astrocytes [19, 20].

Canine adult and fetal/neonatal MSCs have been characterized by immunophenotyping and multipotency assays in many studies [21–27]. Fetal/neonatal MSCs, including placenta-derived stem cells, preserve some features of the primitive embryonic layers. They have the potential to differentiate in many tissues [28], have greater proliferative and immunomodulatory capacity and lesser immunogenicity than adult MSCs [28–30], and are neuroprotective [31, 32]. These stem cells can also be easily harvested and expanded due to the availability of a large amount of tissue which is usually discarded at birth. There is no ethical conflict regarding

placenta harvest making these stem cell sources attractive targets for banking and regenerative therapies [28, 30]. Nonetheless, a deeper understanding of their immunomodulatory function is still lacking.

IBD is a general term used to describe an idiopathic disorder that can be subdivided based on histopathology findings, i.e., granulomatous meningoencephalomyelitis (GME), necrotizing meningoencephalitis (NME), and necrotizing leukoencephalitis (NLE) [33, 34]. Recently, the term meningoencephalomyelitis of unknown origin (MUO) has been proposed to encompass all of these diseases. MUO is presumed to be an autoimmune disease with a genetic predisposition [33]. Immunohistochemical phenotyping of the involved inflammatory cells demonstrates a pivotal role of MHC II<sup>+</sup> cells, T cells, and macrophages in GME and NLE [35–37]. GME can be identified by CD3<sup>+</sup> lymphocyte infiltration into sites of granulomatous inflammation as shown in a representative clinical case shown in Fig. 1. The pattern of mRNA and protein expression of cytokines and chemokine receptors may be disease specific, such as interferon gamma (IFN $\gamma$ ) and CXCR3 in NME, and IL-17 and CCR2 in GME [34]. Cytokines have also been implicated in the phenotype switching of microglia/macrophages from a classically activated pro-inflammatory type (M1) or into an alternatively activated anti-inflammatory phenotype (M2) in canine inflammatory CNS disease [37]. Thus, manipulating this inflammatory phenotype by cell-based therapy might represent a promising therapeutic approach for MUO [37].

Our goal was to compare the in vitro immunomodulatory ability of 2 types of canine MSCs focusing on secretion profiles and neuroreparative assays relevant for canine IBD. This study evaluated the in vitro potential of

canine adipose tissue-derived multipotent mesenchymal stromal cells (ASCs) and placenta-derived multipotent mesenchymal stromal cells (PMSCs) to secrete anti-inflammatory cytokines and to inhibit lymphocyte proliferation, as well as the mechanisms involved in the canine MSC immunomodulatory process.

## Methods

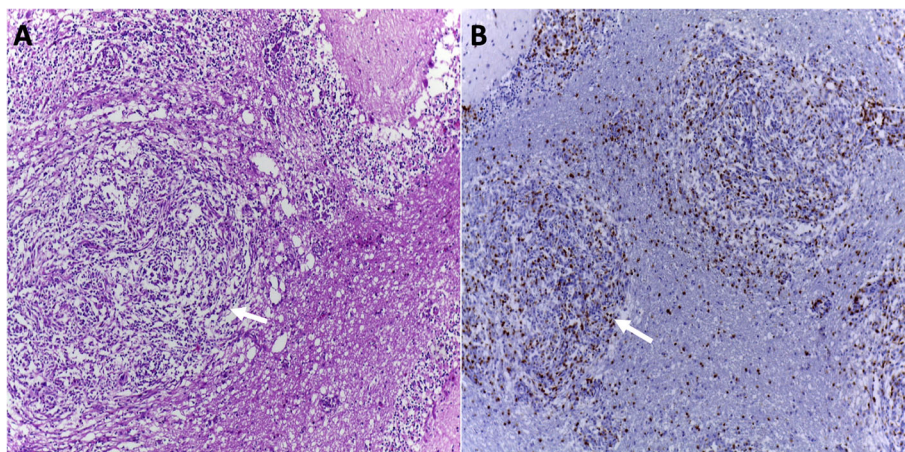
### Canine MSC collection, isolation and culture

#### *Adipose tissue-derived mesenchymal stromal cells (ASCs)*

Canine low passage (P2–P5) ASCs from 5 dogs were obtained from falciform fat collected from UCD William R. Pritchard Veterinary Medical Teaching Hospital healthy patients undergoing routine abdominal surgery. Fat was collected under an approved Institutional Animal Care and Use Committee and the Clinical Trials Review Board protocol at UCD (protocol number 19605). Fat was processed and canine ASCs were isolated, expanded, cryopreserved, and phenotyped exactly as previously described [38, 39]. Briefly, adipose tissue was minced and digested at 37 °C for 1–2 h using 0.1% collagenase type I and 1% bovine-serum albumin (Worthington, Lakewood, NJ). Centrifugation was performed to remove the remaining lipid layer. The cell pellet was washed several times before being plated in standard medium, Dulbecco's modified Eagle's medium (DMEM, Gibco, Invitrogen, Carlsbad, CA) supplemented with 10% FBS (HyClone, Logan, UT), 100 U/mL penicillin and 100  $\mu$ g/mL streptomycin (ThermoFisher Scientific, Gibco, Pittsburgh, PA).

#### *Placenta-derived mesenchymal stromal cells (PMSCs)*

Canine low passage (P2–P5) placenta-derived MSCs from 5 dogs were obtained from Dr. Aijun Wang's laboratory



**Fig. 1** Canine granulomatous meningoencephalomyelitis (GME) in a 2-year-old, female, Miniature Pinscher. **a** Arrow indicates area of granulomatous inflammation (hematoxylin-eosin;  $\times 10$ ). **b** CD3-positive cells in the granulomatous inflammation are indicated (arrow) (immunohistochemistry, DAB, Harris hematoxylin counter stain;  $\times 10$ )



cell bank, University of California Davis Medical Center. Isolation, culture, and full phenotyping of these PMSC lines from discarded term canine placentas was previously described [40]. Briefly, at term, canine placentas were processed by manual dissection and treated with 0.25% trypsin (ThermoFisher) solution for 30 min at 37 °C. Cell pellets were washed and incubated with collagenase IA (1 mg/mL; Sigma-Aldrich, St. Louis, MO) for 45 min at 37 °C. The cell pellet was resuspended and plated onto tissue culture flasks in standard medium.

#### **Stimulation of canine MSCs with IFN $\gamma$ and tumor necrosis factor alpha (TNF $\alpha$ )**

Cryopreserved MSCs were thawed and culture expanded as previously described [38, 40]. When cells were approximately 70% confluent, they were trypsinized and resuspended in standard medium supplemented with L-tryptophan (Sigma-Aldrich) to a final concentration of 600  $\mu$ M. These MSCs were seeded at  $2 \times 10^5$  per well of 24-well plate, with 0.75 mL total media volume per well for the stimulation assays. At plating, MSC was stimulated with IFN $\gamma$  (50 ng/mL; canine recombinant IFN $\gamma$ , Kingfisher, St. Paul, MN) or TNF $\alpha$  (50 ng/mL; canine recombinant TNF $\alpha$ , Kingfisher) or a dual stimulation with both IFN $\gamma$  (50 ng/mL, Kingfisher) and TNF $\alpha$  (50 ng/mL, Kingfisher). Stimulated MSCs were cultured for 4 days at which time supernatants were collected, frozen, and stored at  $-80$  °C for mediator quantification. Stimulation protocols using IFN $\gamma$  and TNF $\alpha$  were optimized by using a dose titration strategy and collection at multiple timepoints for mediator quantification [data not shown]. The optimized strategy is consistent with previous reports on IFN $\gamma$  and TNF $\alpha$  secretion by activated canine MSCs [38, 39].

#### **Canine leukocyte suppression assay (LSA)**

Canine leukocyte suppression assay (LSAs) were performed exactly as previously described [38]. In brief, peripheral blood was collected from healthy dogs 55 pounds or larger between 1 and 8 years old, into tubes containing sodium heparin (Vacutainer®, BD Biosciences) via jugular venipuncture. PBMCs were isolated using a discontinuous Ficoll gradient and were plated with irradiated (10 Gy, Varian 2100C linear accelerator, Varian Medical Systems, Inc., Palo Alto, CA) allogeneic canine ASCs or PMSCs in standard medium (DMEM with 10% FBS, 1% penicillin/streptomycin, supplemented with 600  $\mu$ M L-tryptophan) [38]. PBMCs were activated with 5  $\mu$ g/mL concanavalin A (ConA; Sigma-Aldrich). PBMCs and irradiated MSCs were co-cultured at a ratio of 5:1 in direct contact.

To determine the role of contact, cells were plated in transwell dishes (Corning 0.4  $\mu$ M polycarbonate membrane 24-well plate; Corning, NY, USA) with MSCs

plated in the plate bottom and PBMCs in the insert. To determine the role of IDO and PGE $_2$  in MSC-mediated inhibition of lymphocyte proliferation, inhibitory agents were used in LSA co-cultures. Indomethacin, a cyclooxygenase (COX) inhibitor, was used to chemically block PGE $_2$  production (Cayman Chemical Co., Ann Arbor, MI, 1  $\mu$ M). Alternatively, 1-methyl-DL-tryptophan (1-MT), an IDO competitive inhibitor, was used to partially inhibit IDO activity. Indomethacin was added to LSA assays during plating at a concentration of 10  $\mu$ M (Sigma-Aldrich) as previously described [38] to determine the role of PGE $_2$  on MSC-mediated immunosuppression. Additionally, at plating, 1-MT (Sigma-Aldrich) was added at a concentration of 1 mM as previously described [41] to determine the role of IDO activity on MSC mediated immunosuppression.

After 3 days of co-culture, wells were treated with 1 mM Bromodeoxyuridine (BrdU, BD Biosciences). Twenty-four hours post BrdU treatment, leukocytes were collected, and cells were stained with a viability dye (Fixable Viability Dye Fluor® 780; eBioscience, San Diego, CA) and anti-canine CD3 conjugated to Alexa Fluor® 488 (clone CA17.2A12; Leukocyte Antigen Biology Lab, UCD). Leukocytes were stained for nuclear BrdU incorporation (APC BrdU Flow Kit, BD Biosciences) per manufacturer directions and analyzed by flow cytometry (Cytomics FC500). Fold reduction of leukocyte proliferation by MSCs was normalized to stimulated donor PMBCs for any given experiment. For cell cycle analysis, 7-aminoactinomycin D was added to cultures per manufacturer's instructions (APC BrdU Flow Kit; BD Biosciences) and analyzed by flow cytometry on days 1–4. Flow cytometry data were analyzed using FlowJo flow cytometry software (Tree Star, Inc.). Data was normalized and presented as a reduction of each respective PBMC donor.

At the time of leukocyte collection, culture supernatant was collected, centrifuged, and stored at  $-80$  °C for the measurement of secreted mediators.

#### **Quantification of mediator secretion**

Frozen aliquots of supernatants collected from MSCs stimulated with IFN $\gamma$ /TNF $\alpha$  and from LSA co-cultures using two technical replicates from each assay were used to quantify PGE $_2$  and IDO activity. Canine PGE $_2$  was quantified using an ELISA kit per manufacturer directions (Prostaglandin E2 Express EIA kit (Monoclonal); Cayman Chemical Company, Ann Arbor, MI) [38]. To assess IDO activity, a biochemical assay was performed on frozen supernatants as previously described [42] to quantify the conversion of tryptophan to *N*-formyl kynurenine mediated by IDO. In brief, culture media was treated with 30% trichloroacetic acid (Sigma), and Ehrlich's reagent (1% *p*-dimethylaminobenzaldehyde in

glacial acetic acid, Sigma) was mixed and read at 490 nm on a microplate reader (Synergy HT Multi-Mode Gen5 software) [38].

Supernatants from LSAs co-cultures were used to measure concentrations of interleukin (IL)-2, IL-6, and IL-8; vascular endothelial growth factor (VEGF); and TNF $\alpha$ . IL-2, IL-6, and IL-8 and were quantified via Quantibody<sup>VR</sup> Canine Cytokine Array (RayBio-tech cat# QAC-CYT-1). Negative controls were prepared from wells containing only media. The array was performed according to the manufacturer's instructions, and the resulting glass slide was scanned using a GenePix 4000B microarray scanner (Molecular Devices). Collected images were quantified using GenePix<sup>VR</sup> Pro 6 acquisition and analysis software, and further plotting of standard curves and analysis was performed using Microsoft Excel. TNF $\alpha$  was measured from supernatants using ELISA kits (Canine TNF $\alpha$  DuoSet, R&D Systems) per manufactures instructions. All ELISA samples were read on a Synergy HT Multi-Mode microplate reader with Gen5 software (Biotek, Winooski, VT, USA).

#### Statistical analysis

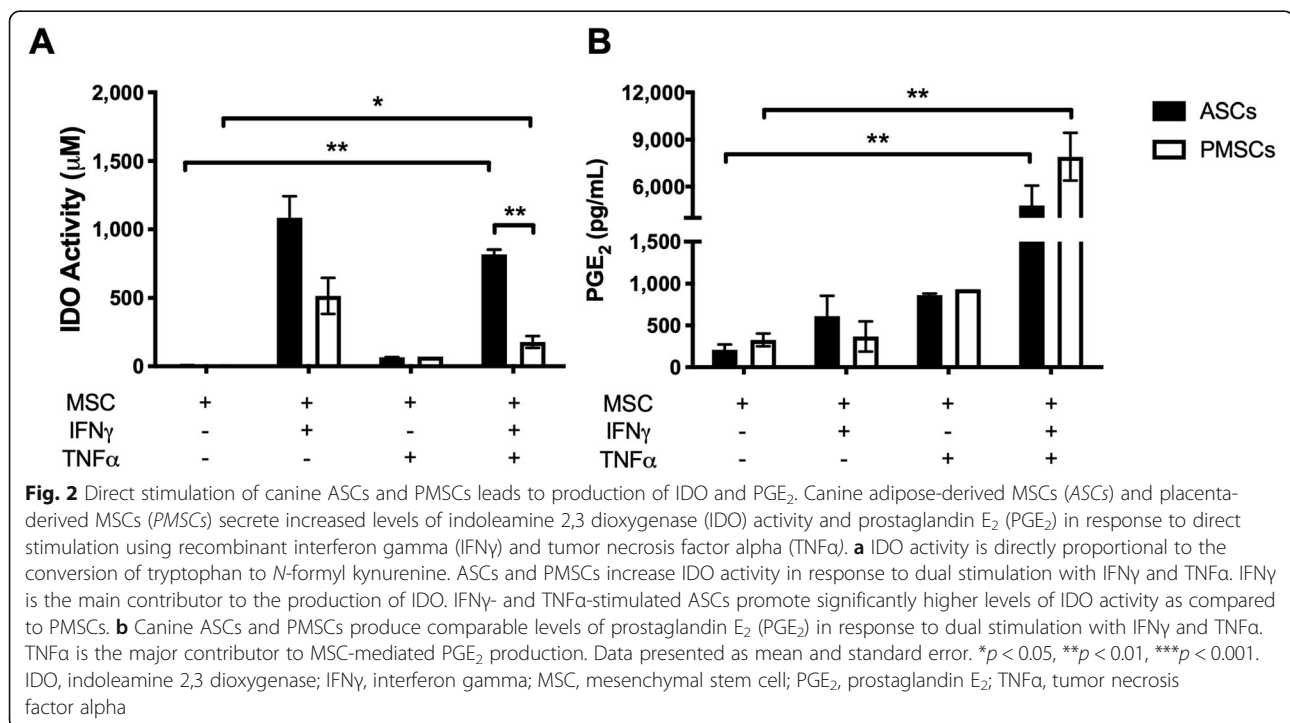
Results are presented as mean and standard error. Data were tested for normality using the Shapiro-Wilk normality test (GraphPad InStat version 3.06 for Windows, La Jolla, CA). Data were analyzed using non-parametric Mann-Whitney-Wilcoxon  $t$  test (GraphPad InStat

version 3.06 for Windows, La Jolla, CA).  $p < 0.05$  was considered statistically significant.

## Results

### Canine MSCs increase IDO and PGE<sub>2</sub> secretion in response to IFN $\gamma$ and TNF $\alpha$ stimulation

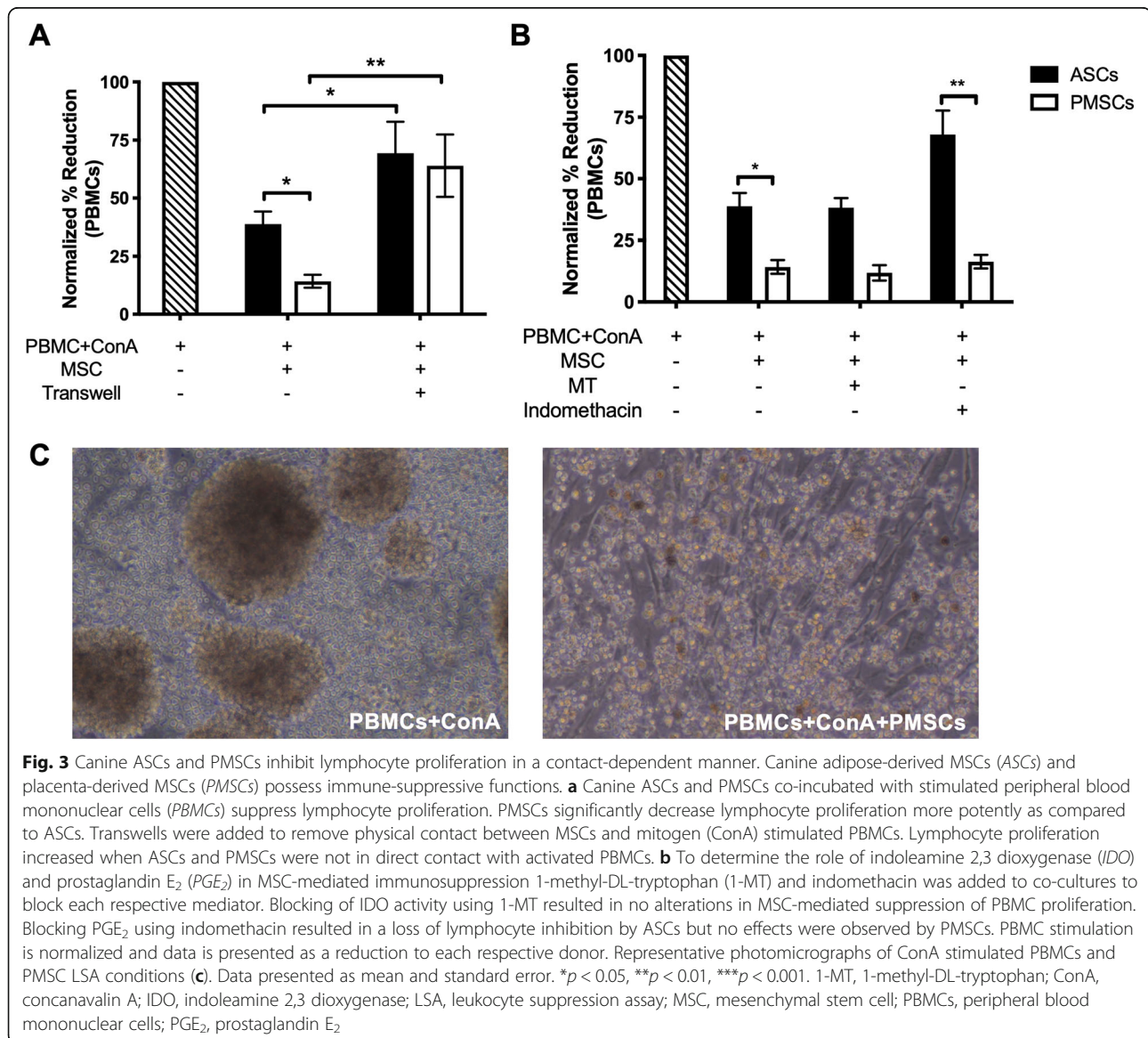
MSC immunomodulatory functions occur in part through the secretion of bioactive factors. MSCs were activated through direct stimulation to determine the immunomodulatory potential using recombinant pro-inflammatory mediators known to be relevant in IBD. Stimulation with IFN $\gamma$  alone increased IDO activity, while stimulation with TNF $\alpha$  alone predominantly stimulated PGE<sub>2</sub> production by both ASCs and PMSCs (Fig. 2a, b). The use of both stimulation agents resulted in a synergistic effect IDO activity and PGE<sub>2</sub> production; therefore, dual stimulation using both IFN $\gamma$  and TNF $\alpha$  was performed in canine ASC and PMSC cultures. Dual stimulation with both IFN $\gamma$  and TNF $\alpha$  resulted in increased PGE<sub>2</sub> production and IDO activity (Fig. 2a, b). Canine ASCs, however, secreted significantly more IDO than PMSCs after 4 days of stimulation with canine recombinant IFN $\gamma$  and TNF $\alpha$  (Fig. 2a;  $p = 0.0079$ ). Dual stimulation of canine ASCs and PMSCs resulted in comparable increases in PGE<sub>2</sub> secretion (Fig. 2b). IDO secretion was exclusively dependent on IFN $\gamma$  with no synergistic increase after the addition of TNF $\alpha$ ; however, PGE<sub>2</sub> secretion was augmented with dual stimulation.



### Canine ASCs and PMSCs inhibit activated PBMC proliferation through distinct mechanisms in a contact-dependent manner

We have previously reported that canine ASCs reduce mitogen-activated PBMC proliferation in LSA co-cultures [38]. Both canine ASCs and PMSCs in direct contact with activated PBMCs inhibited lymphocyte proliferation; however, PMSCs more potently inhibited lymphocyte proliferation compared to ASCs (Fig. 3a,  $p = 0.0127$ ). LSA co-cultures performed within a transwell to remove direct MSC-PBMC cell contact resulted in marked restoration of PBMC proliferation regardless of MSC tissue source (Fig. 3a). These data suggest that canine MSCs reduce activated lymphocyte proliferation in part via direct cell-cell contact.

MSC mediated immunomodulation in dogs also occurs through the secretion of bioactive factors [38, 39, 43, 44].  $\text{PGE}_2$  and IDO have been implicated as crucial mechanisms by which MSCs downregulate inflammatory responses. To evaluate the role of  $\text{PGE}_2$ , the COX inhibitor indomethacin was used to block  $\text{PGE}_2$  synthesis and secretion. The competitive inhibitor 1-MT was used to block the functional properties of IDO. Blocking  $\text{PGE}_2$  led to a significant reduction of ASC-mediated inhibition as compared to PMSCs (Fig. 3b,  $p = 0.0043$ ). Blocking IDO, however, led to no alterations in ASC- or PMSC-mediated suppression of PBMC proliferation (Fig. 3b). Representative photomicrographs of stimulated PBMCs and a PMSC LSA are shown in Fig. 3c. No morphological changes were noted between canine ASC and PMSC LSA conditions.



Secretion of  $\text{PGE}_2$  and IDO in LSA supernatants was determined in standard LSA conditions (MSC-PBMC contact) and in transwell conditions (no cell contact). ASCs and PMSCs secreted comparable levels of IDO when co-cultured in direct contact with mitogen-activated PBMCs (Fig. 4a). Removing direct MSC-PBMC cell contact had no effect on IDO secretion from either MSC source (Fig. 4a). Both ASCs and PMSCs also secreted comparable high levels of  $\text{PGE}_2$  when co-cultured with stimulated PBMCs as compared to basal secretions; however, when direct PBMC cell contact was removed, only PMSCs secretion of  $\text{PGE}_2$  significantly decreased (Fig. 4b).

#### Activated canine PMSC and ASC secretion profiles

Protein concentrations were measured to determine the mediators present in LSA supernatant after co-incubation of activated PBMCs with PMSCs and ASCs. Mediators implicated in the immunomodulatory functions of MSCs were measured and compared to basal levels from unstimulated MSCs. Statistical significance was not achieved; however, trends were observed suggesting that activated ASCs and PMSCs secrete VEGF (Fig. 5a) and IL-6 (Fig. 5b). Additionally, the mediator IL-8, which is secreted by both MSCs and PBMCs, was measured. Unstimulated MSCs did not secrete detectable levels of IL-8 (data not shown). Basal levels of IL-8 from activated PBMCs are comparable to concentrations when ASCs were added to co-culture; however, PMSCs produced greater levels of IL-8 (Fig. 5c). MSCs have also been shown to suppress inflammatory responses through

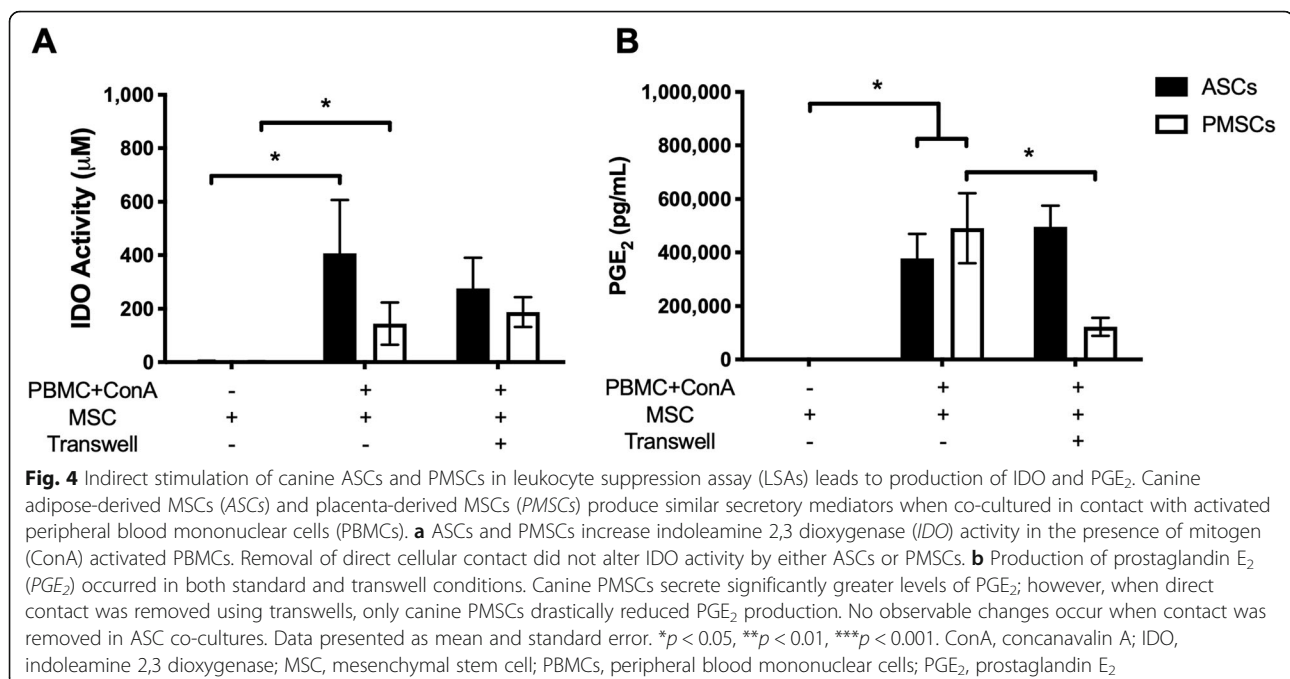
the reduction of pro-inflammatory cytokines. Both ASCs and PMSCs displayed a trend of reduced IL-2 concentrations (Fig. 5d), and both tissues sources reduced  $\text{TNF}\alpha$  to similar concentrations (Fig. 5e).

#### ASCs inhibit lymphocyte proliferation through cycle arrest, while PMSCs induce apoptosis

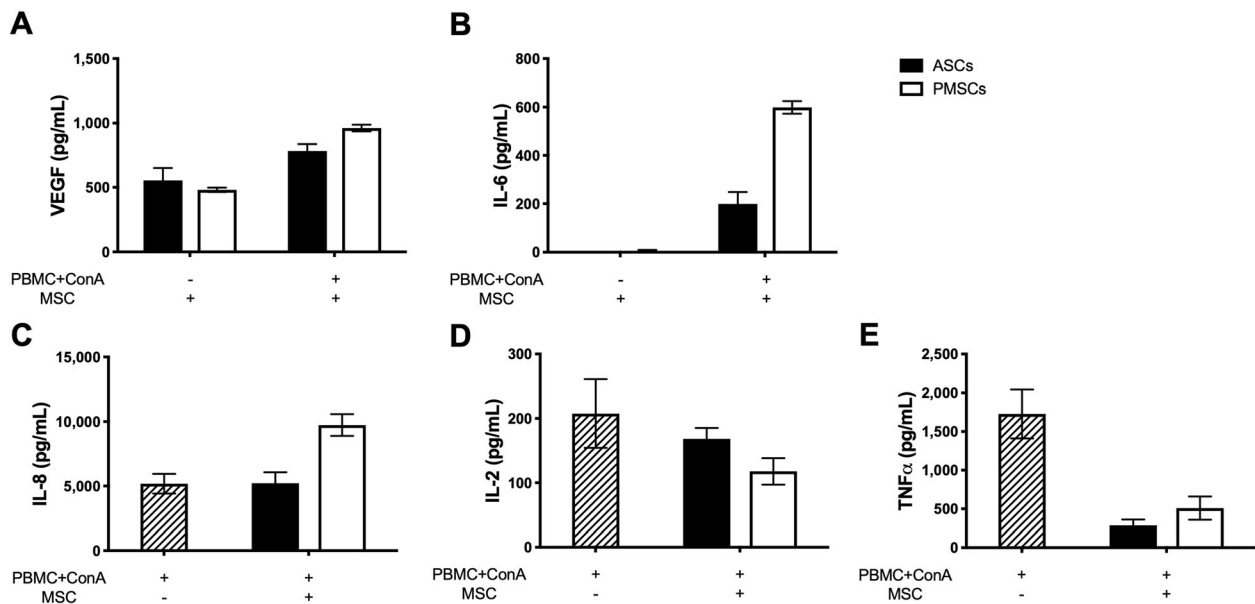
The inhibition of lymphocyte proliferation can be secondary to cell cycle arrest or the induction of apoptosis. Our findings suggest canine MSCs varied in how they inhibited lymphocyte proliferation, depending on the tissue source (adipose or placenta). Our data indicates canine PMSCs induced lymphocyte apoptosis (Fig. 6a) while canine ASCs result in induced lymphocyte arrest in the G0/G1 phase of cell cycle (Fig. 6b). Both tissue sources result in decreased lymphocyte entry into G2/M (Fig. 6c) and S phase (Fig. 6d) of the cell cycle; however, each decreases entry through alternative mechanisms. Representative images of cell cycle flow scatter for unstimulated PBMCs (Fig. 6e, f), ConA stimulated PBMCs (Fig. 6e, f) and LSA conditions for canine ASCs (Fig. 6e) and PMSCs (Fig. 6f) are shown.

#### Discussion

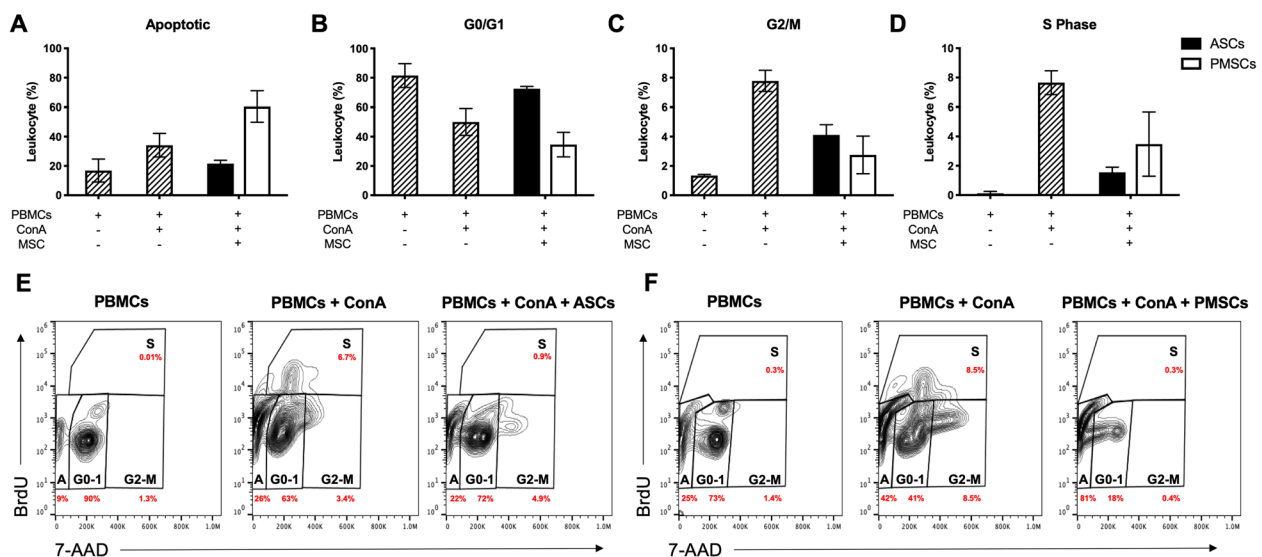
Companion animals are increasingly being utilized as naturally occurring large animal disease models to evaluate the use stem cell-based therapies. Veterinary species suffer from many diseases that closely resemble the pathophysiology of human diseases, making them valuable translational models for preclinical data. The dog has been used to evaluate MSC therapy for the







**Fig. 5** Bioactive factors associated with canine ASC and PMSC mediated immunosuppression differs. Canine adipose-derived MSCs (ASCs) and placenta-derived MSCs (PMSCs) increase production of vascular endothelial growth factor (VEGF) and IL-6. **a** Both canine ASCs and PMSCs mildly increased production of VEGF when co-cultured with mitogen (ConA) activated peripheral blood mononuclear cells (PBMCs). **b** Canine ASCs and PMSCs upregulated IL-6 production; however, PMSCs secreted higher levels of IL-6 as compared to ASCs. **c** Production of IL-8 by canine ASCs was comparable to basal levels of IL-8 produced by stimulated PBMCs; however, PMSCs increased levels of IL-8 greater than basal levels. Additionally, regulation of inflammatory mediators by canine ASCs and PMSCs was similar. **d** IL-2 production from stimulated PBMCs was mildly reduced by both canine ASCs and PMSCs. **e** Canine ASCs and PMSCs inhibit production of tumor necrosis factor alpha (TNFα) by stimulated PBMCs to comparable levels. Data presented as mean and standard error. ConA, concanavalin A; IL, interleukin; TNFα, tumor necrosis factor alpha; VEGF, vascular endothelial growth factor



**Fig. 6** Inhibition of lymphocyte proliferation by canine ASCs and PMSCs occurs through different mechanisms. Cell cycle analysis was performed using peripheral blood mononuclear cells (PBMCs) and BrdU 5-bromo-2'-deoxyuridine and 7-aminoactinomycin D was measured. Unstimulated PBMCs and mitogen (ConA) activated PBMCs were used as controls. **a** Canine PMSCs inhibit lymphocyte proliferation by inducing apoptosis. Alternatively, canine ASCs caused cell cycle arrest which is demonstrated by PBMCs accumulating in G<sub>0</sub>/G<sub>1</sub> (**b**) and hindering cells from entering G<sub>2</sub>/M (**c**) or DNA synthesis (S phase) (**d**). Representative images of cell cycle flow scatter plots and gating strategies for leukocyte DNA content (7-AAD) and proliferation via BrdU incorporation of PBMC controls (**e**, **f**) and co-incubations with canine ASCs (**e**) and PMSCs (**f**) are shown. BrdU, 5-bromo-2'-deoxyuridine and 7-aminoactinomycin D; ConA, concanavalin A; LSA, leukocyte suppression assay; MSC, mesenchymal stem cell

treatment of several inflammatory conditions including osteoarthritis, spinal cord injury, inflammatory bowel disease, and graft-versus-host disease [19, 45–47].

Murine experimental autoimmune encephalomyelitis (EAE) is the most commonly used animal model to study MS. However, EAE does not reproduce all clinical, pathological, or immunological features of human disease [48]. Canine MUO may be useful as a naturally occurring model of MS, given neuroimmunological similarities of these diseases, including the upregulation of IFN $\gamma$ , IL-17, and MHC-II expression in the nervous system [5, 7, 34, 49–51]. Moreover, the genetic association of MHC-II found in dogs with MUO is present in MS [7]. MS is suggested to be mediated by Th1 and Th17 lymphocytes, leading to demyelination and axonal injury [52, 53]. Although the demyelination noted in MS is not present in NME, fulminant or non-prototypic acute variants of MS, such as Marburg variant, Baló's concentric sclerosis, and acute disseminated encephalomyelitis, closely resemble the pathological features of canine NME [7]. The focal and widespread forms of GME, consistent with a delayed hypersensitivity reaction, are also consistent with MS [5]. Cytokine expression in brain lesions of NME and GME display increased levels of interferon gamma (IFN $\gamma$ ) in NME and IL-4 and IL-17 in GME [34]. IL-17 and IFN $\gamma$  production by T lymphocytes is also associated with active disease in MS patients [53]. In addition, CSF in dogs with MUO showed increased levels of CCL19 chemokine, also expressed in neuroinflammatory diseases such as MS / EAE, suggesting similar neuroimmunological events [54].

MSCs are an attractive target for neurodegenerative disease therapies due to their potent neuroprotective, regenerative, and immunomodulatory properties. While most clinical studies utilize adult-derived sources of MSCs, the placenta is a unique source of MSCs that maintain unique functional properties for therapeutic use as compared to adult tissue-derived MSCs. We found that MSCs from adult and fetal tissue sources modulate PBMC proliferation through multiple mechanisms. Both canine ASCs and PMSCs inhibit activated lymphocyte proliferation through a primarily cell-cell contact-mediated mechanism. Notably, PMSCs more potently inhibited lymphocyte proliferation as compared to ASCs *in vitro*. Inhibition of PBMC proliferation by PMSCs occurred through the induction of apoptosis, while ASCs induced cell cycle arrest. Canine ASCs and PMSCs secreted high levels of both PGE $_2$  and IDO through direct stimulation with IFN $\gamma$  and TNF $\alpha$  or through indirect stimulation in our mixed co-culture assay. For PMSCs, when cell-cell contact was removed, a restoration of lymphocyte proliferation and a decrease of PGE $_2$  secretion were observed. Interestingly, blocking PGE $_2$  production in PMSC cultures using a COX-

inhibitor did not restore lymphocyte proliferation. These findings suggest that MSC-PBMC cellular contact is primarily responsible for the production of PGE $_2$  by PMSCs; however, production of this mediator is not directly responsible for induction of lymphocyte apoptosis. Additionally, PMSCs produce IDO but regardless of removing cellular contact or blocking IDO via competitive inhibitor, no effect on PBMC proliferation was observed. Collectively, this data highlights the importance of cellular contact for PMSC-mediated immunosuppression and initiation of PBMC apoptosis.

Similarly, in ASCs, when direct cellular contact was removed with PBMCs, lymphocyte proliferation was restored; however, this contact was not needed for PGE $_2$  secretion. Inhibiting PGE $_2$  production with indomethacin led to increased lymphocyte proliferation by ASCs. These data suggest that for canine ASCs, there are two mechanisms leading to PBMC cell cycle arrest, one that is contact-dependent and one that is PGE $_2$ -dependent. As observed in PMSCs, inhibiting IDO with 1-MT showed no effect on ASC mediated immunosuppression. Removing MSC-PBMC contact did not alter IDO activity in canine ASC co-cultures. These findings suggest that IDO does not play a significant role in canine MSC-mediated immunosuppression from either tissue source.

PGE $_2$  has been shown to play a key role in MSC-mediated immunosuppression in humans, cats, dogs, and horses [18, 55]. PGE $_2$  inhibits production of IFN $\gamma$  and IL-2 and induces T regulatory cells [56]. Decidual stem cells also suppress alloreactivity through induction of T regulatory cells in a contact-dependent manner; however, involvement of programmed cell death 1 (PD-1), IDO, PGE $_2$ , and IFN $\gamma$  still plays a role in this suppression [57]. These data suggest that our findings in canine fetal PMSCs are comparable to human studies. Interestingly, we observed no alterations in immunosuppression by the secretion of IDO, which has been reported in both human adult and fetal-derived tissue sources. Here we report canine MSCs produce IDO when activated; however, this does not seem to be a critical mediator in lymphocyte suppression.

Though not statistically significant, our data suggest that both ASCs and PMSCs secrete VEGF and IL-6. Additionally, PMSCs, trended toward secreting higher levels of IL-6 and IL-8 as compared to ASCs. There is also a trend toward a reduction of IL-2 production by both ASCs and PMSCs. Both tissue sources reduced the production of the pro-inflammatory mediator TNF $\alpha$ . Canine ASC mediators closely recapitulate studies in human ASCs, suggesting that the dog will serve as a useful translational model to evaluate therapeutic applications of MSCs [58]. The ability of canine MSCs from either tissue source to secrete immunomodulatory mediators and suppress

inflammatory cytokines indicates these cells are attractive targets for canine IBD therapeutics.

MSC-immune cell contact, namely in the presence of IFN $\gamma$  and TNF $\alpha$ , has been shown to upregulate PDL-1, vascular cell adhesion molecule 1 (VCAM-1), and inflammatory cytokine-induced adhesion molecule 1 (ICAM-1) and augments the secretion of soluble mediators [59–61]. Additionally, ICAM-1 by feline ASCs has been shown to play a critical role in ASC-T cell adhesion and mediates T cell proliferation [61]. Contact-dependent inhibition of immune cell function has been suggested to play a more important role in local immunosuppression [57]. It has also been shown that blockade of ICAM-1 and VCAM-1 ablates MSC-mediated immunosuppression which highlights the potential mechanistic role of adhesion molecules by MSCs [60]. The role of ICAM-1/LFA ligand has been shown to play a critical role in feline ASC-mediated immunosuppression through induction of G0-G1 cell cycle arrest [61]. Feline ASCs also induce cell cycle arrest by utilizing PGE<sub>2</sub> which is comparable to our findings in dog MSCs, suggesting ICAM-1 may also play a significant role in canine MSC mediated immunosuppression. Therapies targeting adhesion molecules have been used for numerous diseases including MS, using a drug that targets  $\alpha_4\beta_1$ -integrin [62]. Our work has demonstrated the critical role of MSC-immune cell contact in immunoregulation; however, the exact mechanism by which these interactions occur will need to be addressed in future studies. Additionally, a mechanistic comparison of canine and human PMSCs will need to be performed to fully establish the utility of this model.

Taken together, our data suggest that canine ASCs and PMSCs possess immunoregulatory properties. However, the mechanisms by which this immunoregulation occurs differs. Though both cell sources are immunosuppressive, PMSCs displayed more potent ability to decrease activated T cell proliferation. Additionally, PMSCs induce PBMC apoptosis while ASCs induce cell cycle arrest. This highlights the need to consider disease pathology when selecting MSC tissue sources for selected therapies. More studies are needed to understand the mechanistic differences between cell source and immune cell interactions. From our studies, we suggest that PMSCs may be a novel therapeutic source for neurodevelopmental and neurodegenerative diseases.

## Conclusions

The findings from this study demonstrate that canine ASCs and PMSCs have robust immunoregulatory potential. The mechanism of immune suppression by each cell source differs, in that PMSCs induce apoptosis of activated lymphocytes and ASCs induce cell cycle arrest. Secretome profiles of activated MSCs from each source

also differed; however, PMSCs notably more potently inhibit lymphocyte proliferation. While each tissue source holds great potential as a cell-based therapy for IBD, PMSCs may be an ideal tissue source for many neurodegenerative diseases in both animals and humans. Additional studies will be needed to further elucidate the mechanism by which canine MSCs modulate neuroinflammatory responses.

## Abbreviations

1-MT: 1-Methyl-DL-tryptophan; ASC: Adipose-derived mesenchymal stromal cell; BrdU: 5-Bromo-2'-deoxyuridine; ConA: Concanavalin A; CNS: Central nervous system; EAE: Experimental autoimmune encephalomyelitis; FBS: Fetal bovine serum; GME: Granulomatous meningoencephalomyelitis; IBD: Inflammatory brain disease; ICAM-1: Inflammatory cytokine-induced adhesion molecule 1; IDO: Indoleamine 2,3 dioxygenase; IFN $\gamma$ : Interferon gamma; IL: Interleukin; LSA: Leukocyte suppression assay; MS: Multiple sclerosis; MSC: Multipotent mesenchymal stromal cells; MUO: Meningoencephalomyelitis of unknown origin; NK: Natural killer cells; NLE: Necrotizing leukoencephalitis; NME: Necrotizing meningoencephalitis; PBMC: Peripheral blood mononuclear cell; PBS: Phosphate buffered saline; PD-1: Programmed cell death 1; PGE<sub>2</sub>: Prostaglandin E2; PMSC: Placenta-derived mesenchymal stromal cell; TNF $\alpha$ : Tumor necrosis factor alpha; VCAM-1: Vascular cell adhesion molecule 1; VEGF: Vascular endothelial growth factor

## Acknowledgements

Not applicable.

## Authors' contributions

RA developed the idea, performed experiments, analyzed data, and wrote much of the manuscript. KC developed canine fat ASC lines, assisted in statistical analyses and figure compilation, and wrote much of the manuscript. NJW provided oversight and training, ran flow cytometric assays, and helped analyze data. PK ran cytokine assays and helped analyze data. KH developed and qualified canine placental MSC lines. AW conceived ideas, designed experiments, mentored trainees, and edited manuscript versions. DLB wrote the initial grant, designed experiments, interpreted data, mentored trainees, and edited manuscript versions. All authors read and approved the final manuscript.

## Funding

Financial support for this study was provided by the Center for Companion Animal Health and UC Davis Veterinary Institute of Regenerative Cures (MRC), School of Veterinary Medicine, University of California, Davis, the NIH grant (5R01NS100761-02), the Shriners Hospitals for Children research grant (85108-NCA-19), and by a generous gift from Mr. Dick and Carolyn Randall (DLB). Rogério M. Amorim was supported by the Sao Paulo Research Foundation-FAPESP and Sao Paulo State University-Unesp. Kaitlin Clark was supported by the Willis W. and Ethel M. Clark Foundation Investment in Community Fellowship, the Lodric Maddox Graduate Fellowship, and the National Center for Advancing Translational Sciences, National Institutes of Health, through grant number UL1 TR001860 and linked award TL1 TR001861. The content is solely the responsibility of the authors and does not necessarily represent the official views of the NIH.

## Availability of data and materials

The datasets used and/or analyzed during the current study are available from the corresponding author on reasonable request.

## Ethics approval and consent to participate

Canine fat was collected under an approved Institutional Animal Care and Use Committee and the Clinical Trials Review Board protocol at UC Davis (protocol number 19605). Owner informed consent was obtained.

## Consent for publication

Not applicable.

**Competing interests**

The authors declare that they have no competing interests.

**Author details**

<sup>1</sup>Veterinary Institute for Regenerative Cures and Department of Pathology, Microbiology and Immunology, School of Veterinary Medicine, University of California, Davis, Davis, CA, USA. <sup>2</sup>Department of Veterinary Clinics, São Paulo State University "Julio de Mesquita Filho" – UNESP, Botucatu, SP, Brazil. <sup>3</sup>Surgical Bioengineering Laboratory, Department of Surgery, School of Medicine, University of California, Davis, 4625 2nd Ave., Research II, Suite 3005, Sacramento, CA 95817, USA. <sup>4</sup>Institute for Pediatric Regenerative Medicine (IPRM), Shriners Hospitals Pediatric Research Center, Northern California, Sacramento, CA, USA. <sup>5</sup>Department of Biomedical Engineering, University of California, Davis, CA, USA.

Received: 11 December 2019 Revised: 25 June 2020

Accepted: 1 July 2020 Published online: 22 July 2020

**References**

- Tanna T, Sachan V. Mesenchymal stem cells: potential in treatment of neurodegenerative diseases. *Curr Stem Cell Res Ther*. 2014;9(6):513–21.
- Goldman S. Stem and progenitor cell-based therapy of the human central nervous system. *Nat Biotechnol*. 2005;23(7):862–71.
- Lindvall O, Kokaia Z. Stem cells for the treatment of neurological disorders. *Nature*. 2006;441(7097):1094–6.
- Pearse DD, Bunge MB. Designing cell- and gene-based regeneration strategies to repair the injured spinal cord. *J Neurotrauma*. 2006;23(3–4):438–52.
- Hoffman AM, Dow SW. Concise review: stem cell trials using companion animal disease models. *Stem Cells*. 2016;34(7):1709–29.
- Momin EN, Mohyeldin A, Zaidi HA, Vela G, Quinones-Hinojosa A. Mesenchymal stem cells: new approaches for the treatment of neurological diseases. *Curr Stem Cell Res Ther*. 2010;5(4):326–44.
- Greer KA, Wong AK, Liu H, Famula TR, Pedersen NC, Ruhe A, et al. Necrotizing meningoencephalitis of pug dogs associates with dog leukocyte antigen class II and resembles acute variant forms of multiple sclerosis. *Tissue Antigens*. 2010;76(2):110–8.
- Kol A, Arzi B, Athanasiou KA, Farmer DL, Nolte JA, Rebhun RB, et al. Companion animals: translational scientist's new best friends. *Sci Transl Med*. 2015;7(308):308ps21.
- Penha EM, Meira CS, Guimaraes ET, Mendonca MV, Gravelly FA, Pinheiro CM, et al. Use of autologous mesenchymal stem cells derived from bone marrow for the treatment of naturally injured spinal cord in dogs. *Stem Cells Int*. 2014;2014:437521.
- Chamberlain G, Fox J, Ashton B, Middleton J. Concise review: mesenchymal stem cells: their phenotype, differentiation capacity, immunological features, and potential for homing. *Stem Cells*. 2007;25(11):2739–49.
- Carrade DD, Lame MW, Kent MS, Clark KC, Walker NJ, Borjesson DL. Comparative analysis of the immunomodulatory properties of equine adult-derived mesenchymal stem cells. *Cell Med*. 2012;4(1):1–11.
- Hu DZ, Zhou LF, Zhu J, Mao Y, Wu XH. Upregulated gene expression of local brain-derived neurotrophic factor and nerve growth factor after intracisternal administration of marrow stromal cells in rats with traumatic brain injury. *Chin J Traumatol*. 2005;8(1):23–6.
- Parr AM, Tator CH, Keating A. Bone marrow-derived mesenchymal stromal cells for the repair of central nervous system injury. *Bone Marrow Transplant*. 2007;40(7):609–19.
- Maltman DJ, Hardy SA, Przyborski SA. Role of mesenchymal stem cells in neurogenesis and nervous system repair. *Neurochem Int*. 2011;59(3):347–56.
- Uccelli A, Benvenuto F, Laroni A, Giunti D. Neuroprotective features of mesenchymal stem cells. *Best Pract Res Clin Haematol*. 2011;24(1):59–64.
- Paul G, Anisimov SV. The secretome of mesenchymal stem cells: potential implications for neuroregeneration. *Biochimie*. 2013;95(12):2246–56.
- Pittenger MF, Mackay AM, Beck SC, Jaiswal RK, Douglas R, Mosca JD, et al. Multilineage potential of adult human mesenchymal stem cells. *Science*. 1999;284(5411):143–7.
- Aggarwal S, Pittenger MF. Human mesenchymal stem cells modulate allogeneic immune cell responses. *Blood*. 2005;105(4):1815–22.
- Lee J, Kuroda S, Shichinohe H, Ikeda J, Seki T, Hida K, et al. Migration and differentiation of nuclear fluorescence-labeled bone marrow stromal cells after transplantation into cerebral infarct and spinal cord injury in mice. *Neuropathology*. 2003;23(3):169–80.
- Yano S, Kuroda S, Lee JB, Shichinohe H, Seki T, Ikeda J, et al. In vivo fluorescence tracking of bone marrow stromal cells transplanted into a pneumatic injury model of rat spinal cord. *J Neurotrauma*. 2005;22(8):907–18.
- Spencer ND, Chun R, Vidal MA, Gimble JM, Lopez MJ. In vitro expansion and differentiation of fresh and revitalized adult canine bone marrow-derived and adipose tissue-derived stromal cells. *Vet J*. 2012;191(2):231–9.
- Takemitsu H, Zhao D, Yamamoto I, Harada Y, Michishita M, Arai T. Comparison of bone marrow and adipose tissue-derived canine mesenchymal stem cells. *BMC Vet Res*. 2012;8:150.
- Screven R, Kenyon E, Myers MJ, Yancy HF, Skasko M, Boxer L, et al. Immunophenotype and gene expression profile of mesenchymal stem cells derived from canine adipose tissue and bone marrow. *Vet Immunol Immunopathol*. 2014;161(1–2):21–31.
- Zucconi E, Vieira NM, Bueno DF, Secco M, Jazedje T, Ambrosio CE, et al. Mesenchymal stem cells derived from canine umbilical cord vein—a novel source for cell therapy studies. *Stem Cells Dev*. 2010;19(3):395–402.
- Wenceslau CV, Miglino MA, Martins DS, Ambrosio CE, Lizier NF, Pignatari GC, et al. Mesenchymal progenitor cells from canine fetal tissues: yolk sac, liver, and bone marrow. *Tissue Eng Part A*. 2011;17(17–18):2165–76.
- Vieira NM, Brandalise V, Zucconi E, Secco M, Strauss BE, Zatz M. Isolation, characterization, and differentiation potential of canine adipose-derived stem cells. *Cell Transplant*. 2010;19(3):279–89.
- Filioli Uranio M, Valentini L, Lange-Consiglio A, Caira M, Guaricci AC, L'Abbate A, et al. Isolation, proliferation, cytogenetic, and molecular characterization and in vitro differentiation potency of canine stem cells from foetal adnexa: a comparative study of amniotic fluid, amnion, and umbilical cord matrix. *Mol Reprod Dev*. 2011;78(5):361–73.
- Cremonesi F, Corradetti B, Consiglio AL. Fetal adnexa derived stem cells from domestic animal: progress and perspectives. *Theriogenology*. 2011;75(8):1400–15.
- Lee JM, Jung J, Lee HJ, Jeong SJ, Cho KJ, Hwang SG, et al. Comparison of immunomodulatory effects of placenta mesenchymal stem cells with bone marrow and adipose mesenchymal stem cells. *Int Immunopharmacol*. 2012;13(2):219–24.
- Saulnier N, Loriau J, Febre M, Robert C, Rakic R, Bonte T, et al. Canine placenta: a promising potential source of highly proliferative and immunomodulatory mesenchymal stromal cells? *Vet Immunol Immunopathol*. 2016;171:47–55.
- Calzarossa C, Bossolasco P, Besana A, Manca MP, De Grada L, De Coppi P, et al. Neurorescue effects and stem properties of chorionic villi and amniotic progenitor cells. *Neuroscience*. 2013;234:158–72.
- Wang A, Brown EG, Lankford L, Keller BA, Pivetti CD, Sitkin NA, et al. Placental mesenchymal stromal cells rescue ambulation in ovine myelomeningocele. *Stem Cells Transl Med*. 2015;4(6):659–69.
- Coates JR, Jeffery ND. Perspectives on meningoencephalomyelitis of unknown origin. *Vet Clin North Am Small Anim Pract*. 2014;44(6):1157–85.
- Park E-S, Uchida K, Nakayama H. Th1-, Th2-, and Th17-related cytokine and chemokine receptor mRNA and protein expression in the brain tissues, T cells, and macrophages of dogs with necrotizing and granulomatous Meningoencephalitis. *Vet Pathol*. 2013;50(6):1127–34.
- Kipar A, Baumgartner W, Vogl C, Gaedke K, Wellman M. Immunohistochemical characterization of inflammatory cells in brains of dogs with granulomatous meningoencephalitis. *Vet Pathol*. 1998;35(1):43–52.
- Spitzbarth I, Schenk HC, Tipold A, Beineke A. Immunohistochemical characterization of inflammatory and glial responses in a case of necrotizing leucoencephalitis in a French bulldog. *J Comp Pathol*. 2010;142(2–3):235–41.
- Spitzbarth I, Baumgartner W, Beineke A. The role of pro- and anti-inflammatory cytokines in the pathogenesis of spontaneous canine CNS diseases. *Vet Immunol Immunopathol*. 2012;147(1–2):6–24.
- Clark KC, Kol A, Shahbenderian S, Granick JL, Walker NJ, Borjesson DL. Canine and equine mesenchymal stem cells grown in serum free media have altered immunophenotype. *Stem Cell Rev*. 2016;12(2):245–56.
- Kol A, Foutouhi S, Walker NJ, Kong NT, Weimer BC, Borjesson DL. Gastrointestinal microbes interact with canine adipose-derived mesenchymal stem cells in vitro and enhance immunomodulatory functions. *Stem Cells Dev*. 2014;23(16):1831–43.
- Long C, Lankford L, Kumar P, Grahn R, Borjesson DL, Farmer D, et al. Isolation and characterization of canine placenta-derived mesenchymal



- stromal cells for the treatment of neurological disorders in dogs. *Cytometry A*. 2018;93(1):82–92.
41. Hong J, Hueckelhoven A, Wang L, Schmitt A, Wuchter P, Tabarkiewicz J, et al. Indoleamine 2,3-dioxygenase mediates inhibition of virus-specific CD8(+) T cell proliferation by human mesenchymal stromal cells. *Cytotherapy*. 2016;18(5):621–9.
  42. Clark KC, Fierro FA, Ko EM, Walker NJ, Arzi B, Tepper CG, et al. Human and feline adipose-derived mesenchymal stem cells have comparable phenotype, immunomodulatory functions, and transcriptome. *Stem Cell Res Ther*. 2017;8(1):69.
  43. Chow L, Johnson V, Coy J, Regan D, Dow S. Mechanisms of immune suppression utilized by canine adipose and bone marrow-derived mesenchymal stem cells. *Stem Cells Dev*. 2017;26(5):374–89.
  44. Yang HM, Song WJ, Li Q, Kim SY, Kim HJ, Ryu MO, et al. Canine mesenchymal stem cells treated with TNF-alpha and IFN-gamma enhance anti-inflammatory effects through the COX-2/PGE2 pathway. *Res Vet Sci*. 2018;119:19–26.
  45. Perez-Merino EM, Uson-Casas JM, Zaragoza-Bayle C, Duque-Carrasco J, Marinas-Pardo L, Hermida-Prieto M, et al. Safety and efficacy of allogeneic adipose tissue-derived mesenchymal stem cells for treatment of dogs with inflammatory bowel disease: clinical and laboratory outcomes. *Vet J*. 2015; 206(3):385–90.
  46. Black LL, Gaynor J, Adams C, Dhupa S, Sams AE, Taylor R, et al. Effect of intraarticular injection of autologous adipose-derived mesenchymal stem and regenerative cells on clinical signs of chronic osteoarthritis of the elbow joint in dogs. *Vet Ther*. 2008;9(3):192–200.
  47. Mielcarek M, Storb R, Georges GE, Golubev L, Nikitine A, Hwang B, et al. Mesenchymal stromal cells fail to prevent acute graft-versus-host disease and graft rejection after dog leukocyte antigen-haploidentical bone marrow transplantation. *Biol Blood Marrow Transplant*. 2011;17(2):214–25.
  48. Lassmann H, Bradl M. Multiple sclerosis: experimental models and reality. *Acta Neuropathol*. 2017;133(2):223–44.
  49. Park SS, Lee YJ, Lee SH, Lee D, Choi K, Kim WH, et al. Functional recovery after spinal cord injury in dogs treated with a combination of Matrigel and neural-induced adipose-derived mesenchymal stem cells. *Cytotherapy*. 2012; 14(5):584–97.
  50. Moon JH, Jung HW, Lee HC, Jeon JH, Kim NH, Sur JH, et al. A study of experimental autoimmune encephalomyelitis in dogs as a disease model for canine necrotizing encephalitis. *J Vet Sci*. 2015;16(2):203–11.
  51. Jeffery ND, Barker AK, Alcott CJ, Levine JM, Meren I, Wengert J, et al. The association of specific constituents of the fecal microbiota with immune-mediated brain disease in dogs. *PLoS One*. 2017;12(1):e0170589.
  52. Sospedra M, Martin R. Immunology of multiple sclerosis. *Annu Rev Immunol*. 2005;23:683–747.
  53. Atkins HL, Muraro PA, van Laar JM, Pavletic SZ. Autologous hematopoietic stem cell transplantation for autoimmune disease—is it now ready for prime time? *Biol Blood Marrow Transplant*. 2012;18(1 Suppl):S177–83.
  54. Bartels J, Darrow BG, Schatzberg SJ, Bu L, Carlson R, Tipold A. MIP-3beta/CCL19 is associated with the intrathecal invasion of mononuclear cells in neuroinflammatory and non-neuroinflammatory CNS diseases in dogs. *BMC Vet Res*. 2014;10:157.
  55. Carrade DD, Borjesson DL. Immunomodulation by mesenchymal stem cells in veterinary species. *Comp Med*. 2013;63(3):207–17.
  56. Kalinski P. Regulation of immune responses by prostaglandin E2. *J Immunol*. 2012;188(1):21–8.
  57. Erkers T, Nava S, Yosef J, Ringden O, Kaipe H. Decidual stromal cells promote regulatory T cells and suppress alloreactivity in a cell contact-dependent manner. *Stem Cells Dev*. 2013;22(19):2596–605.
  58. Melief SM, Zwaginga JJ, Fibbe WE, Roelofs H. Adipose tissue-derived multipotent stromal cells have a higher immunomodulatory capacity than their bone marrow-derived counterparts. *Stem Cells Transl Med*. 2013;2(6): 455–63.
  59. Mohammadpour H, Pourfathollah AA, Zarif MN, Tahoori MT. TNF-alpha modulates the immunosuppressive effects of MSCs on dendritic cells and T cells. *Int Immunopharmacol*. 2015;28(2):1009–17.
  60. Ren G, Zhao X, Zhang L, Zhang J, L'Huillier A, Ling W, et al. Inflammatory cytokine-induced intercellular adhesion molecule-1 and vascular cell adhesion molecule-1 in mesenchymal stem cells are critical for immunosuppression. *J Immunol*. 2010;184(5):2321–8.
  61. Taechangam N, Iyer SS, Walker NJ, Arzi B, Borjesson DL. Mechanisms utilized by feline adipose-derived mesenchymal stem cells to inhibit T lymphocyte proliferation. *Stem Cell Res Ther*. 2019;10(1):188.
  62. Hutchinson M. Natalizumab: a new treatment for relapsing remitting multiple sclerosis. *Ther Clin Risk Manag*. 2007;3(2):259–68.

# Publisher's Note

Springer Nature remains neutral with regard to jurisdictional claims in published maps and institutional affiliations.

**Ready to submit your research? Choose BMC and benefit from:**

- fast, convenient online submission
- thorough peer review by experienced researchers in your field
- rapid publication on acceptance
- support for research data, including large and complex data types
- gold Open Access which fosters wider collaboration and increased citations
- maximum visibility for your research: over 100M website views per year

**At BMC, research is always in progress.**

Learn more [biomedcentral.com/submissions](https://biomedcentral.com/submissions)

