

# UC Berkeley

## UC Berkeley Previously Published Works

### Title

The behavioural/dysexecutive variant of Alzheimer's disease: clinical, neuroimaging and pathological features

### Permalink

<https://escholarship.org/uc/item/1v8064fz>

### Journal

Brain, 138(9)

### ISSN

0006-8950

### Authors

Ossenkoppele, Rik  
Pijnenburg, Yolande AL  
Perry, David C  
et al.

### Publication Date

2015-09-01

### DOI

10.1093/brain/awv191

Peer reviewed

# The behavioural/dysexecutive variant of Alzheimer's disease: clinical, neuroimaging and pathological features

Rik Ossenkoppele,<sup>1,2,3,4</sup> Yolande A. L. Pijnenburg,<sup>3</sup> David C. Perry,<sup>1</sup> Brendan I. Cohn-Sheehy,<sup>1</sup> Nienke M. E. Scheltens,<sup>3</sup> Jacob W. Vogel,<sup>2</sup> Joel H. Kramer,<sup>1</sup> Annelies E. van der Vlies,<sup>3</sup> Renaud La Joie,<sup>2</sup> Howard J. Rosen,<sup>1</sup> Wiesje M. van der Flier,<sup>3,5</sup> Lea T. Grinberg,<sup>1,6</sup> Annemieke J. Rozemuller,<sup>3</sup> Eric J. Huang,<sup>6</sup> Bart N. M. van Berckel,<sup>4</sup> Bruce L. Miller,<sup>1</sup> Frederik Barkhof,<sup>4</sup> William J. Jagust,<sup>2</sup> Philip Scheltens,<sup>3</sup> William W. Seeley<sup>1,6</sup> and Gil D. Rabinovici<sup>1,2</sup>

A 'frontal variant of Alzheimer's disease' has been described in patients with predominant behavioural or dysexecutive deficits caused by Alzheimer's disease pathology. The description of this rare Alzheimer's disease phenotype has been limited to case reports and small series, and many clinical, neuroimaging and neuropathological characteristics are not well understood. In this retrospective study, we included 55 patients with Alzheimer's disease with a behavioural-predominant presentation (behavioural Alzheimer's disease) and a neuropathological diagnosis of high-likelihood Alzheimer's disease ( $n = 17$ ) and/or biomarker evidence of Alzheimer's disease pathology ( $n = 44$ ). In addition, we included 29 patients with autopsy/biomarker-defined Alzheimer's disease with a dysexecutive-predominant syndrome (dysexecutive Alzheimer's disease). We performed structured chart reviews to ascertain clinical features. First symptoms were more often cognitive (behavioural Alzheimer's disease: 53%; dysexecutive Alzheimer's disease: 83%) than behavioural (behavioural Alzheimer's disease: 25%; dysexecutive Alzheimer's disease: 3%). Apathy was the most common behavioural feature, while hyperorality and perseverative/compulsive behaviours were less prevalent. Fifty-two per cent of patients with behavioural Alzheimer's disease met diagnostic criteria for possible behavioural-variant frontotemporal dementia. Overlap between behavioural and dysexecutive Alzheimer's disease was modest (9/75 patients). Sixty per cent of patients with behavioural Alzheimer's disease and 40% of those with the dysexecutive syndrome carried at least one *APOE*  $\epsilon 4$  allele. We also compared neuropsychological test performance and brain atrophy (applying voxel-based morphometry) with matched autopsy/biomarker-defined typical (amnestic-predominant) Alzheimer's disease (typical Alzheimer's disease,  $n = 58$ ), autopsy-confirmed/Alzheimer's disease biomarker-negative behavioural variant frontotemporal dementia ( $n = 59$ ), and controls ( $n = 61$ ). Patients with behavioural Alzheimer's disease showed worse memory scores than behavioural variant frontotemporal dementia and did not differ from typical Alzheimer's disease, while executive function composite scores were lower compared to behavioural variant frontotemporal dementia and typical Alzheimer's disease. Voxel-wise contrasts between behavioural and dysexecutive Alzheimer's disease patients and controls revealed marked atrophy in bilateral temporoparietal regions and only limited atrophy in the frontal cortex. In direct comparison with behavioural and those with dysexecutive Alzheimer's disease, patients with behavioural variant frontotemporal dementia showed more frontal atrophy and less posterior involvement, whereas patients with typical Alzheimer's disease were slightly more affected posteriorly and showed less frontal atrophy ( $P < 0.001$  uncorrected). Among 24 autopsied behavioural Alzheimer's disease/dysexecutive Alzheimer's disease patients, only two had primary co-morbid FTD-spectrum pathology (progressive supranuclear palsy). In conclusion, behavioural Alzheimer's disease presentations are characterized by a milder and more restricted behavioural profile than in behavioural variant frontotemporal dementia, co-occurrence of memory dysfunction and high *APOE*  $\epsilon 4$  prevalence. Dysexecutive Alzheimer's disease presented as a primarily cognitive

phenotype with minimal behavioural abnormalities and intermediate *APOE*  $\epsilon 4$  prevalence. Both behavioural Alzheimer's disease and dysexecutive Alzheimer's disease presentations are distinguished by temporoparietal-predominant atrophy. Based on the relative sparing of frontal grey matter, we propose to redefine these clinical syndromes as 'the behavioural/dysexecutive variant of Alzheimer's disease' rather than frontal variant Alzheimer's disease. Further work is needed to determine whether behavioural and dysexecutive-predominant presentations of Alzheimer's disease represent distinct phenotypes or a single continuum.

- 1 Memory and Aging Center, University of California San Francisco, San Francisco, USA
- 2 Helen Wills Neuroscience Institute, University of California Berkeley, Berkeley, USA
- 3 Department of Neurology and Alzheimer Center, VU University Medical Center, Amsterdam, The Netherlands
- 4 Department of Radiology and Nuclear Medicine, VU University Medical Center, Amsterdam, The Netherlands
- 5 Department of Epidemiology and Biostatistics VU University Medical Center, Amsterdam, The Netherlands
- 6 Department of Pathology, University of California San Francisco, San Francisco, USA

Correspondence to: Rik Ossenkoppele  
University of California San Francisco,  
Memory and Aging Center 675 Nelson Rising Lane,  
Suite 190 San Francisco,  
CA 94158, USA  
E-mail: r.ossenkoppele@vumc.nl

**Keywords:** Alzheimer's disease; frontotemporal dementia; frontal, behaviour; executive function

**Abbreviations:** CDR = Clinical Dementia Rating; FTD = frontotemporal dementia; MMSE = Mini-Mental State Examination; UCSF = University of California San Francisco; VUMC = VU University Medical Center

## Introduction

The first symptom in the evolution of Alzheimer's disease is usually episodic memory impairment, but visual and language predominant variants of Alzheimer's disease have been well characterized and termed posterior cortical atrophy (Benson *et al.*, 1988; Crutch *et al.*, 2012) and logopenic variant primary progressive aphasia (Mesulam *et al.*, 2008; Gorno-Tempini *et al.*, 2011). A less prevalent phenotype is the 'frontal variant' of Alzheimer's disease, referring to a clinical presentation of predominantly behavioural and/or dysexecutive deficits with Alzheimer's disease as the primary aetiology.

The first description of a frontal variant of Alzheimer's disease was provided by Johnson *et al.* (1999) in three patients with early and predominant executive dysfunction in the face of amyloid plaque and neurofibrillary tangle pathology. Several subsequent studies have reported on a dysexecutive phenotype of Alzheimer's disease (Binetti *et al.*, 1996; Back-Madruga *et al.*, 2002; Snowden *et al.*, 2007; Wolk *et al.*, 2010; Dickerson *et al.*, 2011; Mez *et al.*, 2013), but only few included autopsy/biomarker-confirmed Alzheimer's disease patients. Other autopsy (Forman *et al.*, 2006; Balasa *et al.*, 2011; Mendez *et al.*, 2013; Blennerhassett *et al.*, 2014), clinical (Larner, 2006; Woodward *et al.*, 2010), and case (Taylor *et al.*, 2008; Habek *et al.*, 2010; Herrero-San Martin *et al.*, 2013) studies have shown that the spectrum of frontal variant Alzheimer's disease also comprises patients with early personality and behavioural changes such as disinhibition, apathy or compulsiveness. The clinical picture of frontal

variant Alzheimer's disease may mimic that of behavioural variant frontotemporal dementia (FTD), as illustrated by the 10–40% of patients clinically diagnosed with behavioural variant FTD who are found to have Alzheimer's disease pathology on amyloid PET (Rabinovici *et al.*, 2011; Ossenkoppele *et al.*, 2013a) or post-mortem evaluation (Varma *et al.*, 1999; Forman *et al.*, 2006; Alladi *et al.*, 2007; Beach *et al.*, 2012).

Although frontal variant Alzheimer's disease has been incorporated into new diagnostic criteria for Alzheimer's disease dementia (McKhann *et al.*, 2011; Dubois *et al.*, 2014), little is known about the initial symptoms, risk factors, genetic predispositions, behavioural and neuropsychological profiles and co-pathologies that characterize this phenotype. There is a need for better understanding of neurodegenerative diseases that cross boundaries of distinct clinical entities, as this may improve clinicians' ability to discern the histopathological cause of dementia. In this retrospective study, we assembled a large sample of patients with autopsy/biomarker-defined Alzheimer's disease with behavioural and/or dysexecutive deficits. We aimed to better characterize the clinical, neuropsychological, neuroimaging and neuropathological features of these clinical syndromes, and compared these features to those found in matched behavioural variant FTD and patients with 'typical' (amnestic-predominant) Alzheimer's disease. We hypothesized that patients with Alzheimer's disease selected based on behavioural or dysexecutive-predominant presentations would show a less severe behavioural profile and more impaired cognition than patients with behavioural variant FTD, and would display brain atrophy

in both anterior regions characteristic of behavioural variant FTD and posterior regions characteristic of Alzheimer's disease.

## Materials and methods

### Participants

A total of 253 subjects were included in the study. We identified 75 patients with pathological or biomarker evidence of Alzheimer's disease pathology and a behavioural or dysexecutive-predominant clinical presentation. These included 46 patients selected for a behavioural-predominant presentation (behavioural Alzheimer's disease), 20 selected for a dysexecutive-predominant presentation (dysexecutive Alzheimer's disease), and nine patients who met criteria for both behavioural and dysexecutive Alzheimer's disease (described below). We further included 58 patients with typical Alzheimer's disease, 59 with behavioural variant FTD and 61 control subjects matched with the behavioural-dysexecutive Alzheimer's disease patients for demographical variables and (for patients) disease severity. All subjects were recruited from research cohorts at the University of California San Francisco (UCSF,  $n = 138$ ) Memory and Aging Center and from the VU University Medical Center (VUMC,  $n = 115$ ) Amsterdam Dementia Cohort (van der Flier *et al.*, 2014). All patients underwent standard dementia screening that included a medical history and physical examination, a structured caregiver interview, brain MRI and neuropsychological testing. Mini-Mental State Examination (MMSE,  $n = 250$ ; Folstein *et al.*, 1975), global Clinical Dementia Rating scale (CDR,  $n = 207$ , Morris, 1993), Geriatric Depression Scale (GDS,  $n = 196$ ; Yesavage *et al.*, 1982) and Neuropsychiatric Inventory (NPI,  $n = 186$ ; Kaufer *et al.*, 2000) were administered at baseline. APOE genotyping was performed in 215 subjects. The clinical diagnosis was established by consensus by a multidisciplinary team. Controls were recruited through advertisements in newspapers and underwent the same diagnostic procedures (Ossenkoppele *et al.*, 2012a; Lehmann *et al.*, 2013a). Informed consent was obtained from all subjects or their assigned surrogate decision-makers, and the UCSF and VUMC institutional review boards for human research approved the study.

### Clinical definitions

As there are no consensus clinical criteria for frontal variant Alzheimer's disease, a group of behavioural neurologists (G.D.R., Y.A.L.P., P.S.) and neuropsychologists (R.O., W.vdF., J.H.K.) developed the criteria presented below to identify Alzheimer's disease patients with prominent behavioural and/or dysexecutive presentations. Throughout the manuscript, 'behavioural Alzheimer's disease' and 'dysexecutive Alzheimer's disease' refer to groups of Alzheimer's disease patients selected based on behavioural-predominant or dysexecutive-predominant presentations (specific to this study), respectively, while the generic term 'behavioural/dysexecutive variant Alzheimer's disease' refers to the full spectrum of behavioural/dysexecutive presentations.

### Behavioural-predominant presentations of Alzheimer's disease

The behavioural Alzheimer's disease group was defined as patients with *in vivo* evidence of amyloid pathology on PET or in CSF, and/or autopsy-confirmation (see 'Neuropathology and Alzheimer's disease biomarkers' section), in addition to (i) a clinical diagnosis of possible behavioural variant FTD; or (ii) a differential diagnosis of both possible behavioural variant FTD and probable Alzheimer's disease listed in their medical charts; or (iii) a clinical diagnosis of 'frontal variant' Alzheimer's disease during life. A database search between January 1999 and January 2014 revealed 55 patients (UCSF,  $n = 33$ ; VUMC,  $n = 22$ ) who met these criteria. Although not a prerequisite for inclusion in the behavioural Alzheimer's disease group, 48/55 patients had full neuropsychological testing available. The baseline clinical diagnoses were 'frontal variant' Alzheimer's disease ( $n = 23$ ), behavioural variant FTD ( $n = 15$ ) or included both Alzheimer's disease and behavioural variant FTD in the differential diagnosis ( $n = 17$ ). The mean follow-up period was  $1.5 \pm 1.1$  years with a mean of  $3.3 \pm 2.5$  clinical evaluations. The last available clinical diagnosis included 37 patients with 'frontal variant' Alzheimer's disease, 13 patients with behavioural variant FTD, and five patients with both Alzheimer's disease and behavioural variant FTD as part of the differential diagnosis.

### Dysexecutive-predominant presentations of Alzheimer's disease

The dysexecutive Alzheimer's disease group consisted of patients for whom the first clinical impression was mild cognitive impairment due to Alzheimer's disease or Alzheimer's disease dementia (supported by biomarkers/autopsy), subsequently showing selective impairment of executive functions on extensive neuropsychological testing. First, we searched databases for patients with a clinical diagnosis of probable Alzheimer's disease or mild cognitive impairment due to Alzheimer's disease with (i) positive PET or CSF amyloid biomarkers and/or autopsy-confirmation (see 'Neuropathology and Alzheimer's disease biomarkers' section); (ii) a full neuropsychological test battery available; and (iii) MMSE  $\geq 18$  (to minimize interference of other cognitive domains with executive functions with advancing dementia). After exclusion of patients with posterior cortical atrophy or logopenic variant primary progressive aphasia, 111 patients at UCSF and 104 at VUMC were eligible. Next, z-scores were computed for memory and executive function as described in the neuropsychology section below. The composite score for executive function was subtracted from the memory composite score, and the quartile with worst executive function relative to memory performance was selected. The mean residual (executive z-score minus memory z-score) for patients with dysexecutive variant Alzheimer's disease was  $-1.02 \pm 0.72$  (range:  $-2.82$ – $0.74$ , negative in 27/29 patients) and  $1.64 \pm 1.19$  (range:  $-1.39$ – $4.77$ , positive in 52/56) for the amnesic Alzheimer's disease group ( $P < 0.001$ ). The memory clinics of UCSF and VUMC specifically focus on early-onset dementia patients, a population more frequently demonstrating focal cortical symptoms such as aphasia, apraxia and agnosia, compared to late-onset Alzheimer's disease (Mendez *et al.*, 2012). To identify predominantly dysexecutive syndromes—rather than more global non-amnesic presentations of Alzheimer's disease—only patients

with executive function composite scores at least  $z = 0.5$  lower than language and visuo-spatial function scores were selected from the quartile with worst executive function relative to memory performance. This resulted in 19 patients with dysexecutive Alzheimer's disease from UCSF and 10 from VUMC. Nine patients met inclusion criteria for both behavioural Alzheimer's disease and dysexecutive Alzheimer's disease, and were included in both groups for the analyses.

### Control groups

We identified 58 patients with autopsy/biomarker-confirmed typical Alzheimer's disease and 59 patients with autopsy-confirmed/Alzheimer's disease biomarker-negative behavioural variant FTD who were matched to the behavioural-dysexecutive Alzheimer's disease patients for age, sex, education, MMSE and CDR. We also included 61 cognitively normal controls matched for age, sex and education. The typical Alzheimer's disease patients fulfilled National Institute on Ageing-Alzheimer's Association (NIA-AA) criteria for probable Alzheimer's disease with at least intermediate-likelihood of Alzheimer's disease pathophysiology (McKhann *et al.*, 2011) or mild cognitive impairment due to Alzheimer's disease (Albert *et al.*, 2011) based on positive amyloid markers or autopsy, did not meet criteria for any non-amnesic variant of Alzheimer's disease, and had memory-predominant presentations. Patients with behavioural variant FTD met the core clinical criteria proposed by Neary *et al.* (1998) or Rascovsky *et al.* (2011), and were either autopsy-confirmed or had negative amyloid markers.

## Neuropathology and Alzheimer's disease biomarkers

Patients were only included after autopsy and/or biomarker confirmation of Alzheimer's disease pathology. The breakdown of the number of autopsy, PET and CSF assessments for each diagnostic group is provided in Table 1. Amyloid PET and/or amyloid- $\beta_{42}$  and tau biomarkers in CSF were used for assessment of Alzheimer's disease pathology during life. Amyloid PET and CSF biomarkers correlate with a neuropathological diagnosis of Alzheimer's disease (Strozyk *et al.*, 2003; Ikonovic *et al.*, 2008) and there is excellent concordance between PET and CSF (Landau *et al.*, 2013; Zwan *et al.*, 2014). Amyloid PET scans [using  $^{11}\text{C}$ -Pittsburgh compound B (PiB) (Klunk *et al.*, 2004) in the vast majority and  $^{18}\text{F}$ -flutemetamol (Vandenberghe *et al.*, 2010) in four patients] were performed using previously described procedures (Rabinovici *et al.*, 2011; Ossenkoppele *et al.*, 2012a). Parametric images were assessed by experienced raters and visually interpreted as amyloid-positive or amyloid-negative. CSF data were collected at VUMC only using a previously described method (van der Flier *et al.*, 2014). A cut-off of total tau/amyloid- $\beta_{42}$  ratio  $> 0.52$  was used to classify the CSF as 'Alzheimer's disease-like' (Duits *et al.*, 2014).

Comprehensive neuropathological assessments were performed following previously described standard procedures for the evaluation of dementia (Lee *et al.*, 2011; Schoonenboom *et al.*, 2012). Patients were included if they met NIA-Reagan neuropathological criteria for intermediate or high-likelihood Alzheimer's disease (Hyman and Trojanowski, 1997). The neuropathological diagnosis of FTD

was made using standard criteria (Cairns *et al.*, 2007; Mackenzie *et al.*, 2010). Further microscopic investigations were performed to assess the presence of co-pathologies such as cerebral amyloid angiopathy, cerebrovascular disease and Lewy body disease (Montine *et al.*, 2012). Argrophilic grain disease, TAR DNA-binding protein 43 (encoded by *TARDBP*) and argrophilic thorny astrocyte clusters were noted when observed during neuropathological examination but were not assessed systematically across the entire cohort. Neuropathological protocols have been modified over time (autopsies were performed between 2004 and the present) as novel protein inclusions and analytical methods were detected. Missing data are indicated as 'unknown' in Table 2.

## Clinical data

Structured chart reviews in patients with behavioural Alzheimer's disease and those with dysexecutive Alzheimer's disease were performed by R.O., Y.A.L.P. and G.D.R. to ascertain clinical features (see the example form in the Supplementary material). Five randomly selected charts of both UCSF and VUMC patients were jointly reviewed to ensure sufficient internal consistency. Information was collected on the first symptom(s) reported by the patient and/or caregiver (i.e. cognitive, behavioural and/or motor), medical history, family history of dementia or other neurological/psychiatric disorders, whether each of the diagnostic criteria for behavioural variant FTD (Rascovsky *et al.*, 2011) and probable Alzheimer's disease (McKhann *et al.*, 2011) were met, clinical diagnosis after the first visit, final clinical diagnosis, follow-up period and number of evaluations.

## Neuropsychology

Cognitive functioning was assessed using neuropsychological tests completed at baseline that were either performed at both UCSF and VUMC (Rabinovici *et al.*, 2010; Ossenkoppele *et al.*, 2012b) or that measure equivalent neuropsychological constructs. Four major cognitive domains were covered: memory (delayed recall of the Californian Verbal Learning Test and Benson Figure Test at UCSF and delayed recall of a Dutch version of the Rey Auditory Verbal Learning Test and the Visual Association Test at VUMC), executive functioning (Digit Span backwards, Trail Making Test part B, Stroop Color-Word card subtask and Letter Fluency at both UCSF and VUMC), language (Category Fluency at both sites, Boston Naming Test at UCSF and Visual Association Test picture naming at VUMC) and visuo-spatial functioning [Number Location from the Visual Object Space and Perception battery and (modified) Rey Complex Figure copy test at both centres]. Population-based age, sex and education adjusted normalized scores were available for all memory and executive function tasks, but not for all language and visuo-spatial tests. We therefore converted raw language and visuo-spatial test scores to  $z$ -scores within the final selection (presented in Table 1) of patients and controls. For language and visuo-spatial functions,  $z = 0$  therefore reflects the average performance of the present study population, whereas for memory and executive function  $z = 0$  reflects the average performance of the general population. Finally, composite means were calculated for each cognitive domain by averaging  $z$ -scores for all tasks within a given cognitive domain.

**Table 1** Demographic and clinical characteristics according to diagnostic group

	Behavioural/ dysexecutive variant Alzheimer's disease	Behavioural presentation Alzheimer's disease	Dysexecutive presentation Alzheimer's disease	Typical Alzheimer's disease	Behavioural variant FTD	Controls
N	75	55*	29*	58	59	61
Age <sup>a</sup>	65.8 ± 8.5	64.7 ± 8.8	69.2 ± 8.5	64.4 ± 8.6	63.8 ± 6.8	63.7 ± 8.1
Sex (% male)	68.0	72.7	60.7	65.5	71.2	62.3
Education (years) <sup>b</sup>	15.5 ± 3.1	15.7 ± 2.3	15.7 ± 2.7	15.8 ± 2.5	15.4 ± 3.2	17.3 ± 1.9
MMSE <sup>c</sup>	22.7 ± 5.6	22.5 ± 5.4	24.6 ± 3.3	22.5 ± 4.1	23.7 ± 5.4	29.4 ± 0.7
CDR <sup>d</sup>	0.9 ± 0.6	0.9 ± 0.4	0.8 ± 0.3	0.9 ± 0.5	1.1 ± 0.7	0 ± 0
GDS <sup>e</sup>	3.4 ± 2.9	3.2 ± 2.8	3.7 ± 3.2	2.9 ± 2.1	5.0 ± 3.4	2.0 ± 2.6
NPI <sup>f</sup>	14.3 ± 16.8	15.4 ± 17.6	12.3 ± 18.1	7.0 ± 11.0	21.9 ± 20.0	2.7 ± 1.2
% APOE ε4 carriers <sup>g</sup>	51.7	59.5	40.0	72.1	18.9	16.7
APOE ε4 <sup>+/+/-/-g</sup>	6/25/29	6/19/17	2/8/15	14/17/12	0/10/43	3/7/50
TIV (l)	1.60 ± 0.17	1.60 ± 0.15	1.61 ± 0.19	1.59 ± 0.15	1.64 ± 0.16	1.57 ± 0.14
Autopsy-confirmed	24	17	12	8	21	-
PET/CSF biomarkers	41/22	28/18	15/10	26/29	23/23	-

Data are presented as mean ± SD unless indicated otherwise. Differences between groups were assessed using ANOVA with *post hoc* LSD tests [age, education, MMSE, CDR, Geriatric Depression Scale (GDS), Neuropsychiatric Inventory (NPI) and total intracranial volume (TIV)],  $\chi^2$  (sex and APOE ε4 status), and Kruskal-Wallis with *post hoc* Mann-Whitney U-tests (number of APOE ε4 alleles).

<sup>a</sup>Dysexecutive Alzheimer's disease > other groups,  $P < 0.05$ .

<sup>b</sup>Controls > patients,  $P < 0.01$ .

<sup>c</sup>Patients < controls,  $P < 0.001$ ; behavioural Alzheimer's disease + typical Alzheimer's disease < dysexecutive Alzheimer's disease,  $P < 0.05$ .

<sup>d</sup>Patients > controls,  $P < 0.001$ ; behavioural variant FTD > dysexecutive Alzheimer's disease,  $P < 0.01$ .

<sup>e</sup>Behavioural/dysexecutive Alzheimer's disease + behavioural Alzheimer's disease + dysexecutive Alzheimer's disease + behavioural variant FTD > controls,  $P < 0.05$ ; behavioural variant FTD > behavioural Alzheimer's disease/dysexecutive Alzheimer's disease + behavioural Alzheimer's disease + typical Alzheimer's disease,  $P < 0.01$ .

<sup>f</sup>Behavioural/dysexecutive Alzheimer's disease + behavioural Alzheimer's disease + dysexecutive Alzheimer's disease + behavioural variant FTD > controls,  $P < 0.05$ ; behavioural Alzheimer's disease/dysexecutive Alzheimer's disease + behavioural Alzheimer's disease > typical Alzheimer's disease,  $P < 0.05$ ; behavioural variant FTD > dysexecutive Alzheimer's disease + typical Alzheimer's disease,  $P < 0.05$ .

<sup>g</sup>Behavioural/dysexecutive Alzheimer's disease + behavioural Alzheimer's disease + dysexecutive Alzheimer's disease + typical Alzheimer's disease > behavioural variant FTD + controls,  $P < 0.05$ ; typical Alzheimer's disease > dysexecutive Alzheimer's disease,  $P < 0.05$ .

\*Nine patients met criteria for both behavioural and dysexecutive Alzheimer's disease and were included in both groups.

APOE = Apolipoprotein E; + + = ε4 homozygous, + - = ε4 heterozygous; - - = ε4 negative.

## Magnetic resonance imaging

### Acquisition

Structural MRI scans were available for 46/55 patients with behavioural Alzheimer's disease, 26/29 patients with dysexecutive Alzheimer's disease, 58/58 patients with typical Alzheimer's disease, 57/59 patients with behavioural variant FTD, and 61/61 control subjects. At UCSF, T<sub>1</sub>-weighted images were acquired on a 1.5 T (Magnetom Avanto System/Magnetom VISION system, Siemens,  $n = 87$ ) or 3 T (Tim Trio, Siemens,  $n = 51$ ) unit. At VUMC, MRI scans were performed on a 1 T (Magnetom Impact, Siemens,  $n = 21$ ), 1.5 T (Sonata, Siemens,  $n = 23$ ) or 3 T (SignaHDxt, GE Healthcare,  $n = 66$ ) unit. Acquisition parameters have been published previously (Sluiter *et al.*, 2008; Ossenkoppele *et al.*, 2012a; Lehmann *et al.*, 2013a; Moller *et al.*, 2013). The proportion of subjects scanned on each scanner was balanced across groups and all imaging statistical models included scanner type and acquisition site as nuisance variables.

### Voxel-based morphometry

MRI data were segmented using the New Segment toolbox implemented in the Statistical Parametric Mapping (SPM) 8 software (Wellcome Trust Centre for Neuroimaging, Institute of Neurology at University College London). Diffeomorphic Anatomical Registration Through Exponentiated Lie Algebra

(DARTEL) was used to generate a study-specific template by aligning the grey matter images non-linearly to a common space. Native grey and white matter images were spatially normalized to the DARTEL template using individual flow fields, with modulation applied to preserve the total amount of signal. Images were smoothed using an 8-mm full-width at half-maximum isotropic Gaussian kernel. Images were inspected visually after each step in the processing pipeline, and the final smoothed-modulated-warped grey matter images were checked for sample homogeneity using the VBM8 toolbox to identify potential outliers. Next, we performed voxel-wise contrasts between the four different patient groups (plus a combined behavioural/dysexecutive Alzheimer's disease group) and the healthy control subjects. We additionally performed voxel-wise contrasts against controls for patients with autopsy-confirmed behavioural Alzheimer's disease/dysexecutive Alzheimer's disease ( $n = 24$ ) and for patients with behavioural Alzheimer's disease who were initially diagnosed with behavioural variant FTD ( $n = 13$ ). Finally, we directly compared the patient groups (combined behavioural/dysexecutive Alzheimer's disease, typical Alzheimer's disease and behavioural variant FTD). The primary models included age, sex, total intracranial volume, scanner type and centre as nuisance variables. Secondary models additionally included MMSE (as a proxy of disease severity) as a nuisance variable. Results are displayed at an uncorrected threshold of  $P < 0.001$ .

**Table 2** Neuropathological findings in behavioural and dysexecutive variant Alzheimer's disease patients

#	Phenotype	Age at Diagnosis	Sex	MMSE	Possible bvFTD criteria met <sup>a</sup>	Baseline diagnosis	Last diagnosis	Diagnosis-to-autopsy (months)	NIA-Reagan likelihood <sup>b</sup>	CAA	CVD	LB	AGD	TDP	Other
1	bAD	42	M	18	A/C/D/E	bvFTD	bvFTD	45	High	Absent	No	Absent	Unknown	Unknown	
2	bAD	57	F	11	A	bAD	bAD	64	High	Absent	No	Amygdala	Unknown	Unknown	
3	bAD	63	M	28	A	bAD	bAD	52	High	Absent	No	Amygdala	Unknown	Unknown	
4	bAD	60	F	10	A/D/E/F	bvFTD	bvFTD	22	High	Mild	No	Absent	Unknown	Unknown	
5	bAD	57	M	16	A/B/E	bvFTD	bvFTD	118	High	Moderate	No	Limbic	Unknown	Unknown	
6	bAD	52	F	30	A/B/E	bAD/bvFTD	bAD	82	High	Moderate	No	Absent	Absent	Absent	
7	bAD	71	M	20	A/D	bAD	bAD	25	High	Moderate	No	Absent	Unknown	Unknown	
8	bAD	60	M	22	C	bAD/bvFTD	bAD/bvFTD	85	High	Moderate	No	Amygdala	Absent	Absent	
9	bAD	58	M	Unknown	B/C/D/F	bAD/bvFTD	bAD	58	High	Absent	No	Absent	Unknown	Unknown	
10	bAD	58	M	24	B/F	bAD	bAD	41	High	Mild	Yes <sup>d</sup>	Limbic	Limbic	Absent	
11	bAD	56	M	11	B/C	bAD	bAD	53	High	Moderate	No	Absent	Absent	Absent	
12	bAD	56	F	26	B/D/E	bAD	bAD	50	High	Mild	Yes <sup>e</sup>	Absent	Absent	Absent	ATAC
13	bAD + deAD	81	M	23	A/C/D/F	bvFTD	bvFTD	15	High	Absent	No	Absent	Unknown	Unknown	PSP <sup>f</sup>
14	bAD + deAD	76	F	28	C/F	bAD/bvFTD	bAD/bvFTD	43	High	Absent	No	Absent	Unknown	Unknown	
15	bAD + deAD	58	M	28	B/D/F	bvFTD/PSP	bvFTD/PSP	63	High	Unknown	No	Absent	Unknown	Absent	PSP <sup>f</sup>
16	bAD + deAD	73	M	27	B/C	bAD	bAD	53	High	Unknown	No	Neocortical	Unknown	Unknown	
17	bAD + deAD	83	M	19	A/B/C/D/E/F	bvFTD	bvFTD	82	High	Severe	Yes <sup>f</sup>	Limbic	Limbic	Unclassifiable	ATAC
18	deAD	65	F	25	F	AD	AD	74	High	Absent	Yes <sup>g</sup>	Absent	Unknown	Absent	
19	deAD	72	M	25	F	AD	AD	101	High	Mild	No	Limbic	Limbic	Unknown	ATAC
20	deAD	62	M	25	F	AD/CBD	AD	80	High	Mild	Yes <sup>h</sup>	Absent	Unknown	Absent	
21	deAD	75	F	28	F	AD	AD	62	High	Mild	Yes <sup>i</sup>	Absent	Limbic	Absent	
22	deAD	59	M	18	B/C	AD	AD	74	High	Absent	No	Absent	Absent	Absent	
23	deAD	81	M	19	None	AD	AD	72	High	Moderate	No	Amygdala	Unknown	Absent	
24	deAD	67	M	25	F	AD	AD	47	High	Moderate	No	Neocortical	Unknown	Unknown	

bAD = behavioural-predominant presentation Alzheimer's disease; deAD = dysexecutive-predominant presentation Alzheimer's disease; M = male; F = female; PSP = progressive supranuclear palsy; ADNC = Alzheimer's disease neuropathological change; CAA = cerebral amyloid angiopathy; CVD = cerebrovascular disease; DLB = Lewy bodies; AGD = argyrophilic grain disease; TDP = TAR DNA-binding protein; ATAC = argyrophilic thorny astrocyte clusters.

<sup>a</sup>Rascovsky et al. (2011) criteria for possible behavioural variant FTLD: A = disinhibition, B = apathy, C = loss of empathy or sympathy, D = perseverative, Stereotype or compulsive/ritualistic behaviour, E = hyperorality and dietary changes, F = dysexecutive neuropsychological profile.

<sup>b</sup>Hyman and Trojanowski (1997): all patients had frequent neuritic plaques (CERAD) and neurofibrillary tangles stage V or VI (Braak).

<sup>c</sup>Mixed primary Alzheimer's disease/ progressive supranuclear palsy neuropathological diagnosis.

<sup>d</sup>One lacunar infarct, scarce middle insula and angular gyrus microinfarcts, mild to moderate arteriolosclerosis.

<sup>e</sup>Scarce microinfarction in putamen.

<sup>f</sup>Scarce microinfarction in globus pallidus, moderate arteriolosclerosis.

<sup>g</sup>Lacunar infarcts in right external globus pallidus and putamen.

<sup>h</sup>Lacunar infarct left putamen/pallidum/subinsular white matter.

<sup>i</sup>Moderate microinfarction thalamus and angular gyrus, moderate arteriolosclerosis.

## Frequency maps

As voxel-based morphometry group-level analyses potentially wash out individual effects, we generated frequency maps across the brain to visualize the proportion of patients within each phenotype who showed reduced grey matter density compared to controls (Supplementary Fig. 1). These maps show the relative involvement of each brain region for each diagnostic group. First, we performed voxel-wise regressions in SPM8 on a set of nuisance factors (age, sex, total intracranial volume, scanner type and centre) to estimate their effect on smoothed-modulated-warped grey matter probability images (resulting from VBM processing) in our group of healthy controls. This resulted in beta maps for the nuisance variables as well as a residual map for each healthy control. Next, we used these values to compute a voxel-wise map of *W*-scores for each patient using the formula:  $W\text{-score} = (\text{actual} - \text{expected}) / \text{SD}$ , where actual is the smoothed-modulated-warped grey matter probability for a given patient at a given voxel, expected is the predicted grey matter probability for that voxel using the nuisance factors and beta weights from the regression in healthy controls, and SD is the standard deviation of

the residuals for that voxel among the controls. Thus, *W*-scores (mean = 0, SD = 1 in the control group, similar to *z*-scores) show, at each voxel, where a patient's grey matter probability would fall on the normal distribution of grey matter probabilities in healthy controls, after taking nuisance factors into account (Jack et al., 1997; La Joie et al., 2012). Our last steps were to binarize the *W*-score map for each patient at  $W < -1$ , and to allow for comparison between diagnostic groups we generated frequency maps to show the proportion of patients with suprathreshold *W*-scores for each voxel across the brain.

## Statistical analyses

Differences between groups for baseline characteristics were assessed using ANOVA with *post hoc* Fischer's least significant difference (LSD) tests for continuous variables and  $\chi^2$  and Kruskal-Wallis with *post hoc* Mann-Whitney U-tests for dichotomous or categorical data. Differences in neuropsychological function across groups were assessed using ANOVA with *post hoc* Fischer's LSD tests.

## Results

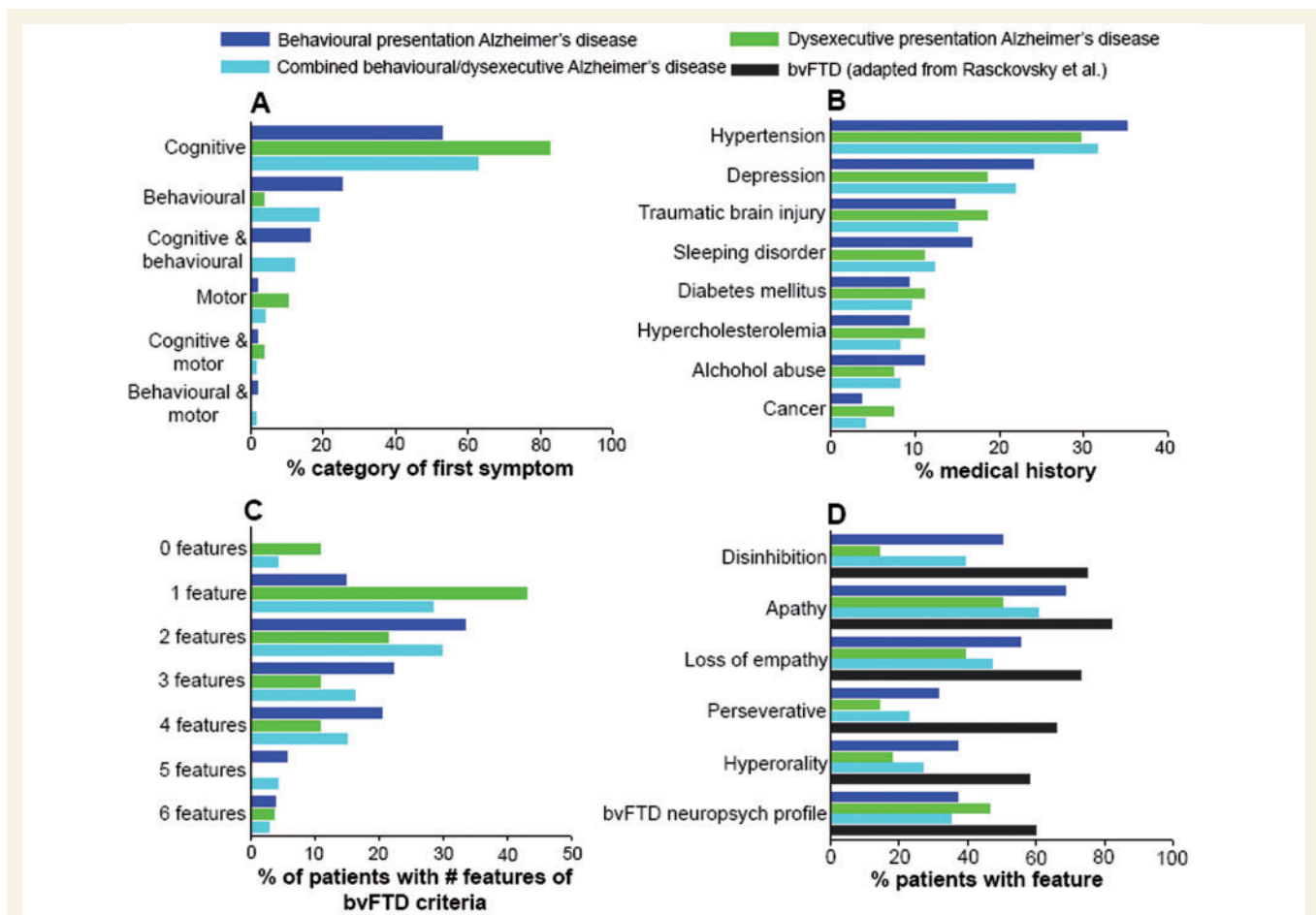
### Participants

Demographic and clinical characteristics are presented in Table 1. Clinical groups consisted of mildly impaired patients with mean MMSE scores ranging from 22 to 25 and an average CDR of  $\sim 1$ . Patients with behavioural Alzheimer's disease (mean age:  $64.7 \pm 8.8$ , median: 64.1, range: 43.1–83.5) and dysexecutive Alzheimer's disease (mean age:  $69.2 \pm 8.5$ , median: 71.3, range: 53.7–83.5) were relatively young at time of diagnosis and more often male (73% and 61%, respectively) than female. Of the patients with behavioural Alzheimer's disease and patients with dysexecutive Alzheimer's disease, 59.5% and 40% carried at least one *APOE*  $\epsilon 4$  allele, respectively.

### Behavioural-predominant presentations of Alzheimer's disease

Patients presented initially with cognitive difficulties (53%) more often than with behavioural changes (25%, Fig. 1A).

The breakdown of cognitive complaints at baseline consisted of memory impairment (26/55, 47%), executive dysfunction (4/55, 7%), both (21/55, 38%) or neither memory nor executive dysfunction (4/55, 7%). Hypertension, depression, sleep disorder and traumatic brain injury were the most frequently mentioned conditions in the medical history (Fig. 1B). Fifty-two per cent met international consensus criteria for possible behavioural variant FTD (Rascovsky *et al.*, 2011). The majority of patients were close to the threshold of  $\geq 3$  of 6 core behavioural/cognitive symptoms required for a diagnosis of possible behavioural variant FTD [2/6 (33%), 3/6 (22%) or 4/6 (20%), Fig. 1C], and had fewer behavioural symptoms compared to patients with behavioural variant FTD. Apathy was more prominent than disinhibition and loss of empathy, while hyperorality and perseverative/compulsive behaviours were less common (Fig. 1D). Figure 1D and the Neuropsychiatric Inventory scores also indicate that the behavioural profile of patients with behavioural Alzheimer's disease was less profound than that of patients with behavioural variant FTD. Neuropsychiatric Inventory domains often cited in typical Alzheimer's disease such as anxiety,



**Figure 1 Clinical features.** Frequency of (A) first symptoms reported by patients and caregivers, (B) self-reported medical conditions in the past history, (C) the number of core behavioural/cognitive symptoms met of diagnostic criteria for behavioural variant FTD (bvFTD; Rascovsky *et al.*, 2011), and (D) these behavioural/cognitive features.



agitation, and irritability were less prevalent in patients with behavioural Alzheimer's disease than in those with behavioural variant FTD.

### Dysexecutive-predominant presentations of Alzheimer's disease

Patients with dysexecutive Alzheimer's disease predominantly presented with cognitive deficits (83%, Fig. 1A). The breakdown of cognitive complaints at baseline consisted of memory impairment (11/29, 38%), executive dysfunction (3/29, 10%), both (11/29, 38%) or neither memory nor executive dysfunction (4/29, 14%). Hypertension, depression, and traumatic brain injury were among the most frequently mentioned conditions in the medical history (Fig. 1B). There was mild overlap between dysexecutive and behavioural Alzheimer's disease as nine patients fulfilled inclusion criteria for both groups. Seven of the patients with dysexecutive/behavioural Alzheimer's disease met international consensus criteria for possible behavioural variant FTD (Rascovsky *et al.*, 2011), whereas none of the dysexecutive Alzheimer's disease only patients met behavioural variant FTD criteria. Most patients experienced only one (43%) or two (21%) core behavioural/cognitive symptoms (Fig. 1C). Apathy was the most common behavioural feature, followed by a behavioural variant FTD neuropsychological profile and loss of empathy, while disinhibition, hyperorality and perseverative/compulsive behaviours were less prevalent (Fig. 1D).

### Neuropsychology

Patient groups showed worse neuropsychological functions than controls in all cognitive domains ( $P < 0.001$ ). Behavioural Alzheimer's disease patients had worse composite memory scores than dysexecutive Alzheimer's disease ( $P < 0.001$ ) and behavioural variant FTD ( $P < 0.01$ ) patients, and memory scores did not significantly differ from typical Alzheimer's disease patients ( $P = 0.06$ , Fig. 2A). Both dysexecutive Alzheimer's disease and behavioural Alzheimer's disease patients had lower composite executive function scores than typical Alzheimer's disease ( $< 0.05$ ) and behavioural variant FTD patients ( $P < 0.05$ ), and did not differ from each other ( $P = 0.29$ , Fig. 2B). The patient groups did not differ in composite scores for language and visuo-spatial functions (Fig. 2C and D).

### Magnetic resonance imaging

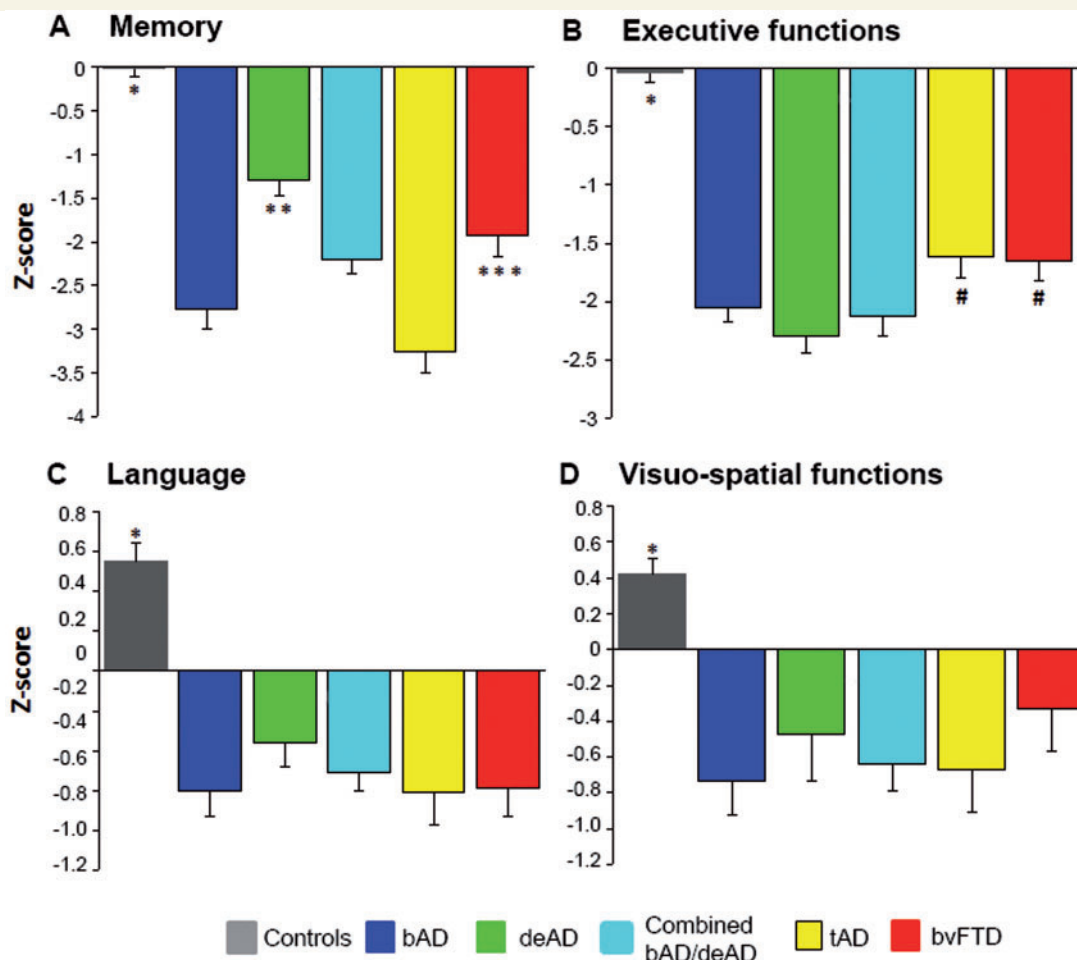
#### Voxel-based morphometry: patients versus controls

We performed voxel-wise contrasts between the different patient groups and controls (Fig. 3), adjusted for age, sex, total intracranial volume, scanner type and centre. Characteristic patterns of brain atrophy were seen in patients with typical Alzheimer's disease (involving large areas of the temporoparietal cortex, including posterior cingulate, precuneus and the medial temporal lobes) and patients with behavioural variant FTD (in medial frontal cortex, anterior

cingulate, frontal insula and bilateral anterior temporal lobes). Compared with healthy controls at  $P < 0.001$  uncorrected, the combined behavioural/dysexecutive Alzheimer's disease group showed a pattern of brain atrophy that was strikingly similar to that observed in the typical Alzheimer's disease patients, with limited atrophy in the frontal cortex (Fig. 3). Patients with behavioural Alzheimer's disease showed a predominant temporoparietal atrophy pattern, with additional involvement of small regions of the left orbitofrontal cortex, frontal poles and middle and superior frontal gyri (at  $P < 0.001$  uncorrected). The effect in frontal regions disappeared when applying a more stringent statistical threshold [ $P < 0.05$  family-wise error (FWE) corrected], while the classical posterior Alzheimer's disease regions survived (Supplementary Table 1). Voxel-wise contrasts between controls and the autopsy-confirmed behavioural Alzheimer's disease patients showed a pattern of atrophy similar to that of the total behavioural Alzheimer's disease group (Supplementary Fig. 2A). Patients with behavioural Alzheimer's disease initially diagnosed with behavioural variant FTD (thus excluding baseline 'frontal Alzheimer's disease' and Alzheimer's disease/behavioural variant FTD differential diagnoses) had similar lateral temporoparietal atrophy compared to the entire behavioural Alzheimer's disease group, but showed more frontal (mainly dorsolateral) and insular atrophy and less mesoparietal involvement (Supplementary Fig. 2B) when compared against controls. At  $P < 0.001$  uncorrected, the dysexecutive Alzheimer's disease group showed diffusely distributed grey matter reductions in superior, middle and inferior temporal gyrus, anterior and posterior cingulate, inferior parietal lobule and parahippocampal gyrus. Apart from the anterior cingulate gyrus, no significant clusters were observed in the frontal cortex. Only one cluster in the left middle temporal cortex survived  $P < 0.05$  FWE correction. Supplementary Table 1 includes the coordinates of local maxima and their anatomical labels, T-values, P-values and cluster sizes of all voxel-wise contrasts described above. In a secondary model including MMSE as an additional covariate the effects attenuated differences between patients and controls (particularly for typical Alzheimer's disease and behavioural variant FTD patients, see Supplementary Fig. 3), but the observed patterns of atrophy were largely similar.

#### Voxel-based morphometry: direct patient contrasts

Figure 4 shows voxel-wise contrasts between the patient groups, adjusted for age, sex, total intracranial volume, scanner type and centre. At  $P < 0.001$  uncorrected, the combined behavioural/dysexecutive Alzheimer's disease group showed greater involvement of various prefrontal and temporal regions whereas patients with typical Alzheimer's disease were more affected in the occipital cortex. Apart from a small cluster in the left medial frontal gyrus in patients with behavioural/dysexecutive Alzheimer's disease, both groups did not differ at  $P < 0.05$  FWE corrected. Direct comparisons between behavioural/dysexecutive Alzheimer's disease and



**Figure 2 Neuropsychological performance.** Composite z-scores for (A) memory, (B) executive functions, (C) language and (D) visuo-spatial functions. Differences between groups were assessed using ANOVA. \*All patient groups < controls,  $P < 0.001$ ; \*\*behavioural Alzheimer's disease (bAD;  $P < 0.001$ ), typical Alzheimer's disease (tAD;  $P < 0.001$ ), behavioural Alzheimer's disease/dysexecutive Alzheimer's disease (bAD/deAD;  $P < 0.05$ ) and behavioural variant FTD (bvFTD;  $P < 0.05$ ) < dysexecutive Alzheimer's disease; \*\*\*behavioural Alzheimer's disease ( $P < 0.01$ ) and typical Alzheimer's disease ( $P < 0.001$ ) < behavioural variant FTD; #dysexecutive Alzheimer's disease < typical Alzheimer's disease ( $P < 0.01$ ) and behavioural variant FTD ( $P < 0.01$ ) and behavioural Alzheimer's disease/dysexecutive Alzheimer's disease and behavioural Alzheimer's disease < typical Alzheimer's disease ( $P < 0.05$ ) and behavioural variant FTD ( $P < 0.05$ ).

behavioural variant FTD revealed a clearly distinct atrophy pattern with posterior involvement in behavioural/dysexecutive Alzheimer's disease and anterior involvement in behavioural variant FTD, which largely survived  $P < 0.05$  FWE correction. Additional adjustment for disease severity (using MMSE) essentially did not change the results (Supplementary Fig. 4). Supplementary Table 2 includes the coordinates of local maxima and their anatomical labels, T-values,  $P$ -values and cluster sizes of all voxel-wise contrasts described above.

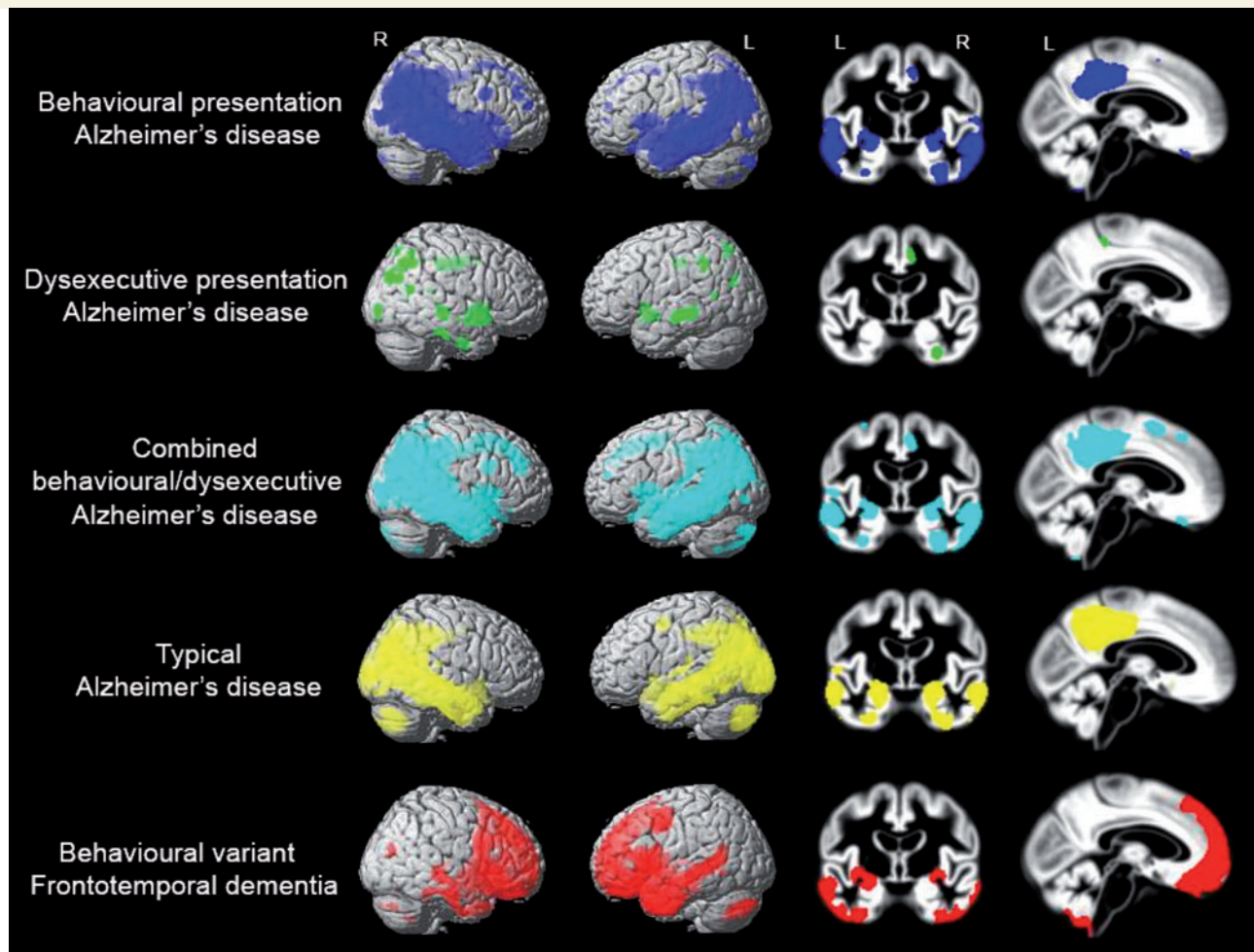
### Frequency maps of brain atrophy

To further assess the relative involvement of the frontal cortex we computed frequency maps showing for each voxel the proportion of patients with suprathreshold  $W$ -scores ( $W < -1$ ). Visual inspection of the  $W$ -score maps indicate that patients in both behavioural Alzheimer's disease and dysexecutive Alzheimer's disease groups showed more frequent involvement in frontal cortical regions (i.e.

anterior cingulate, orbitofrontal cortex, middle and superior frontal gyrus) compared to patients with typical Alzheimer's disease, but markedly less than patients with behavioural variant FTD (Fig. 4). Also, the frequencies were highest in regions typically affected in Alzheimer's disease such as posterior cingulate, precuneus and lateral temporoparietal regions. Patients with dysexecutive Alzheimer's disease showed more frequent relative involvement of the frontal and parietal cortex than patients with behavioural Alzheimer's disease, whereas patients with behavioural Alzheimer's disease showed more (medial) temporal lobe involvement than patients with dysexecutive Alzheimer's disease.

### Neuropathology

Neuropathological data were available for 12 patients with behavioural Alzheimer's disease, seven with dysexecutive



**Figure 3** Voxel-wise comparisons of grey matter volumes between healthy controls and the different diagnostic groups.

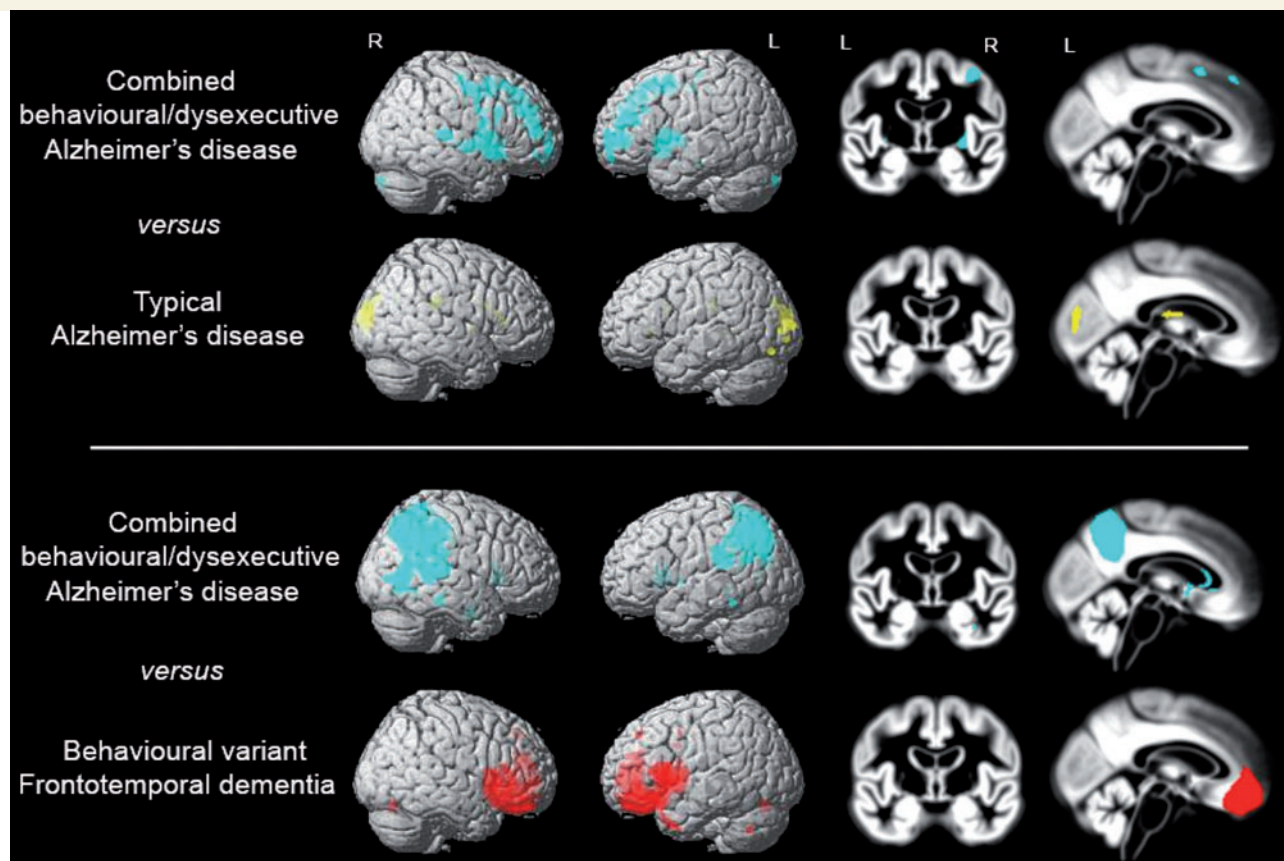
Contrasts were adjusted for age, sex, total intracranial volume, scanner type and centre. Results are superimposed on the SPM8 single-subject template (left) and the study-specific DARTEL template (right), and displayed at  $P < 0.001$  uncorrected. Supplementary Table 1 includes the coordinates of local maxima and their anatomical labels, T-values, P-values and cluster sizes.

Alzheimer's disease and five with mixed behavioural/dysexecutive Alzheimer's disease. The mean interval from time of diagnosis to autopsy was  $60.9 \pm 23.8$  months. All patients with behavioural/dysexecutive Alzheimer's disease met NIA-Reagan neuropathological criteria (Hyman and Trojanowski, 1997) for high-likelihood Alzheimer's disease, with frequent neuritic plaque scores (Mirra *et al.*, 1991) and Braak stage V ( $n = 4$ ) or VI ( $n = 20$ ) for neurofibrillary tangles (Braak and Braak, 1991; Braak *et al.*, 2006). For eight patients, Thal amyloid- $\beta$  plaque stage (Thal *et al.*, 2002) was assessed. All had stage V and thus classified for 'high' Alzheimer's disease neuropathological change according to recently proposed NIA-AA guidelines (Montine *et al.*, 2012). Of all patients, two had mixed dementia with Alzheimer's disease and progressive supranuclear palsy as co-primary neuropathological diagnosis. Both patients met formal criteria for possible behavioural variant FTD during life and additionally met our criteria for dysexecutive Alzheimer's disease. One patient was clinically diagnosed

with behavioural variant FTD and the other with mixed behavioural variant FTD and progressive supranuclear palsy. Several co-pathologies were observed in our neuropathological sample: cerebral amyloid angiopathy in 14/22 (64%, six mild, seven moderate and one severe), cerebrovascular disease in 6/24 (25%, see legend of Table 2 for specification), Lewy body disease in 10/24 (42%, four amygdala-predominant, four transitional limbic and two diffuse neocortical), argyrophilic grain disease in 4/9 (44%, all limbic), and TARDBP in 1/12 patients (8%, unclassifiable-limbic). Additionally, argyrophilic thorny astrocyte clusters (Munoz *et al.*, 2007) were observed in three patients, and one patient had a large pituitary adenoma.

## Discussion

In this retrospective study we assessed the clinical, neuropsychological, morphological and neuropathological



**Figure 4** Voxel-wise comparisons of grey matter volumes between combined behavioural/dysexecutive variant Alzheimer's disease, typical Alzheimer's disease and behavioural variant FTD patients. Contrasts were adjusted for age, sex, total intracranial volume, scanner type and centre. Results are superimposed on the SPM8 single-subject template (*left*) and the study-specific DARTEL template (*right*), and displayed at  $P < 0.001$  uncorrected. Supplementary Table 1 includes the coordinates of local maxima and their anatomical labels, T-values, P-values and cluster sizes.

features of a clinical syndrome that is known in the literature as the frontal variant of Alzheimer's disease. We compared autopsy/biomarker-defined Alzheimer's disease patients selected based on 'behavioural' or 'dysexecutive' predominant presentations against carefully matched and autopsy/biomarker-confirmed typical Alzheimer's disease and behavioural variant FTD patients, along with a group of healthy controls. As a group, patients with Alzheimer's disease selected based on behavioural-predominant presentations more often presented initially with cognitive than behavioural symptoms, both memory and executive functions were more impaired than in behavioural variant FTD, and prevalence of *APOE*  $\epsilon 4$  was high. Patients with Alzheimer's disease selected based on dysexecutive features presented as a primarily cognitive phenotype with minimal behavioural abnormalities and intermediate *APOE*  $\epsilon 4$  prevalence. Both behavioural and dysexecutive Alzheimer's disease patients were distinguished by temporoparietal-predominant atrophy. Based on the relative sparing of frontal grey matter in most patients, we propose future reference to these clinical

syndromes as 'the behavioural/dysexecutive variant of Alzheimer's disease' rather than frontal Alzheimer's disease.

## Clinical features and neuropsychological profiles

In line with Forman *et al.* (2006), patients with behavioural Alzheimer's disease presented twice as often with cognitive as opposed to behavioural symptoms. About 80% of patients were around the threshold required to meet clinical criteria for possible behavioural variant FTD (meeting 2–4 of 6 criteria, with 3/6 criteria required for the diagnosis of 'possible behavioural variant FTD'; Rascovsky *et al.*, 2011), while 52% met formal criteria, illustrating the diagnostic dilemmas these patients can produce. Figure 1D and the Neuropsychiatric Inventory scores indicate that the severity of behavioural symptoms was greater in patients with behavioural variant FTD than behavioural Alzheimer's disease. On the other hand, patients with behavioural Alzheimer's disease had the most profound neuropsychological deficits, showing equivalent memory

performance to patients with typical Alzheimer's disease and worse executive functioning than behavioural variant FTD and typical Alzheimer's disease patients. Altogether, these findings suggest that a combination of early primary cognitive deficits, objectively-confirmed memory deficits and an intermediate behavioural profile can help to differentiate behavioural Alzheimer's disease from behavioural variant FTD clinically. In line with our hypothesis, dysexecutive Alzheimer's disease presented as a primarily cognitive phenotype with minimal behavioural abnormalities (25% of patients with dysexecutive Alzheimer's disease was also included in the behavioural Alzheimer's disease group). Breakdown of the first cognitive symptoms revealed that patients with dysexecutive Alzheimer's disease and/or their caregivers rarely complain about dysexecutive features (only 10%), suggesting that their symptoms are often misclassified as 'memory-related'.

### Potential risk factors

The proportion of patients with behavioural Alzheimer's disease carrying an *APOE*  $\epsilon 4$ -allele (59.5%) was within the range typically observed in patients with Alzheimer's disease (Poirier *et al.*, 1993; Farrer *et al.*, 1997). *APOE*  $\epsilon 4$  is known to predispose for medial temporal lobe vulnerability and memory dysfunction (Wolk *et al.*, 2010; Ossenkoppele *et al.*, 2013b; Lehmann *et al.*, 2014; Manning *et al.*, 2014) and so could partially account for these features. The prevalence of *APOE*  $\epsilon 4$ -carriers in patients with dysexecutive Alzheimer's disease (40%) was intermediate to that of typical Alzheimer's disease and controls, which is in accordance with other studies in non-amnesic variants of Alzheimer's disease (Pa *et al.*, 2009; Wolk *et al.*, 2010; van der Flier *et al.*, 2011; Mez *et al.*, 2013). Future research should assess for potential other genetic risk factors contributing to behavioural/dysexecutive variant Alzheimer's disease. In agreement with previous reports (Duara *et al.*, 1996; Devi *et al.*, 2004), approximately half of the behavioural Alzheimer's disease and dysexecutive Alzheimer's disease groups had a positive family history (first or second degree) of dementia or a psychiatric disorder. Medical histories of behavioural Alzheimer's disease and dysexecutive Alzheimer's disease patients showed roughly equivalent presence of most conditions, e.g. hypertension (30–35%), diabetes mellitus (~10%) and sleeping disorder (11–17%), compared to epidemiological studies (Wild *et al.*, 2004; Nwankwo *et al.*, 2013). The proportion of depression (18–24% received treatment) and traumatic brain injury (15–19% experienced at least one moderate or severe event) seemed overrepresented in behavioural Alzheimer's disease and dysexecutive Alzheimer's disease patients compared to the general population (Soldatos and Lugesesi, 1987; Andrade *et al.*, 2003; Corrigan *et al.*, 2010). However, an ascertainment bias due to the retrospective nature and clinical setting of this study should be taken into account.

### Clinico-anatomical dissociation

In behavioural Alzheimer's disease and dysexecutive Alzheimer's disease patients, the frontal lobe, traditionally considered to be the regulatory core of behaviour and executive functioning (Damasio *et al.*, 1994; Bruen *et al.*, 2008), was relatively spared compared to the temporoparietal regions in voxel-based morphometry group-level analyses (Fig. 3). Although slightly more affected than in typical Alzheimer's disease, frontal atrophy was less prominent than we hypothesized *a priori* based on the behavioural and dysexecutive phenotypes. There are several explanations for this clinico-anatomical dissociation. First, we used somewhat liberal criteria to define our behavioural Alzheimer's disease group. Due to lack of consensus clinical criteria, behavioural Alzheimer's disease has often been operationalized as patients meeting behavioural variant FTD criteria in the face of primary Alzheimer's disease pathology at autopsy (Forman *et al.*, 2006; Mendez *et al.*, 2013). To capture more broadly the clinical spectrum of these patients, we did not only include patients who met formal criteria for behavioural variant FTD, but also included patients who were clinically labelled as having 'frontal Alzheimer's disease' or having a differential diagnosis consisting of both behavioural variant FTD and behavioural Alzheimer's disease. When only looking at patients with behavioural Alzheimer's disease who were initially diagnosed with behavioural variant FTD, frontal atrophy was more prominent than that in the total behavioural Alzheimer's disease group, but temporoparietal atrophy remained predominant (Supplementary Fig. 2B). While previous case studies and our clinical experience demonstrate that profound frontal involvement can be observed in patients with behavioural Alzheimer's disease, these single-subject effects may have been washed in group-level voxel-based morphometry analyses. The W-score frequency maps (Fig. 4) should be more sensitive to individual atrophy patterns, and indeed visual inspection of these maps indicated more frontal involvement compared to the voxel-based morphometry results (Fig. 3). Second, vascular damage in frontal white matter may result in fronto-parietal disconnection (Neufang *et al.*, 2011) and has been associated with both neuropsychiatric symptoms (Kim *et al.*, 2013) and executive dysfunction (Sjoberck *et al.*, 2010) in Alzheimer's disease. Similarly, lesions in basal ganglia that affect fronto-subcortical circuitries have been shown to exert behavioural or dysexecutive symptoms (Reed *et al.*, 2004; Pa *et al.*, 2009). Third, it is conceivable that structural MRI did not capture the full extent of neurodegeneration as a recent study did show increased frontal hypometabolism in patients with Alzheimer's disease with the highest score on a behavioural questionnaire (Woodward *et al.*, 2014). This suggests that  $^{18}\text{F}$ -fluorodeoxyglucose (FDG) PET might be able to detect neuronal injury in an earlier stage. Finally, patients with behavioural Alzheimer's disease and those with dysexecutive Alzheimer's disease might have reduced frontal reserve

related to neurodevelopmental factors, life events (e.g. traumatic brain injury), or differences in premorbid personality traits or genes that regulate behaviour. This would make them more vulnerable to frontal dysfunction when general brain homeostasis is disturbed and could potentially trigger a behavioural/dysexecutive profile when pathogenic processes occur. Future studies applying functional MRI,  $^{18}\text{F}$ -FDG PET, quantification of white matter integrity, subcortical volumetrics or premorbid personality questionnaires are essential to further unravel the neurobiology underlying behavioural/dysexecutive variant Alzheimer's disease.

## Neuroimaging distinction between behavioural/dysexecutive variant Alzheimer's disease and behavioural variant FTD

Clinicians often struggle to differentiate Alzheimer's disease from behavioural variant FTD (Rabinovici *et al.*, 2011), and diagnostic decision-making will likely be even more complex in patients with a behavioural/dysexecutive presentation of Alzheimer's disease. A key finding of this study is that structural MRI clearly distinguished the two groups, as behavioural variant FTD patients showed a characteristic atrophy pattern in anterior brain regions, while the behavioural/dysexecutive variant Alzheimer's disease group showed a classical Alzheimer's disease pattern involving wide regions of the temporoparietal cortex. Direct statistical comparison between the groups survived  $P < 0.05$  FWE correction, and even within a subset ( $n = 13$ ) of patients with autopsy/biomarker-defined Alzheimer's disease with an initial clinical diagnosis of behavioural variant FTD the temporoparietal cortex was the predominant locus of brain atrophy. This suggests that posterior versus anterior brain atrophy on structural MRI provides helpful information when clinicians are uncertain whether Alzheimer's disease or frontotemporal lobar degeneration (FTLD) pathology is driving a behavioural/dysexecutive presentation.

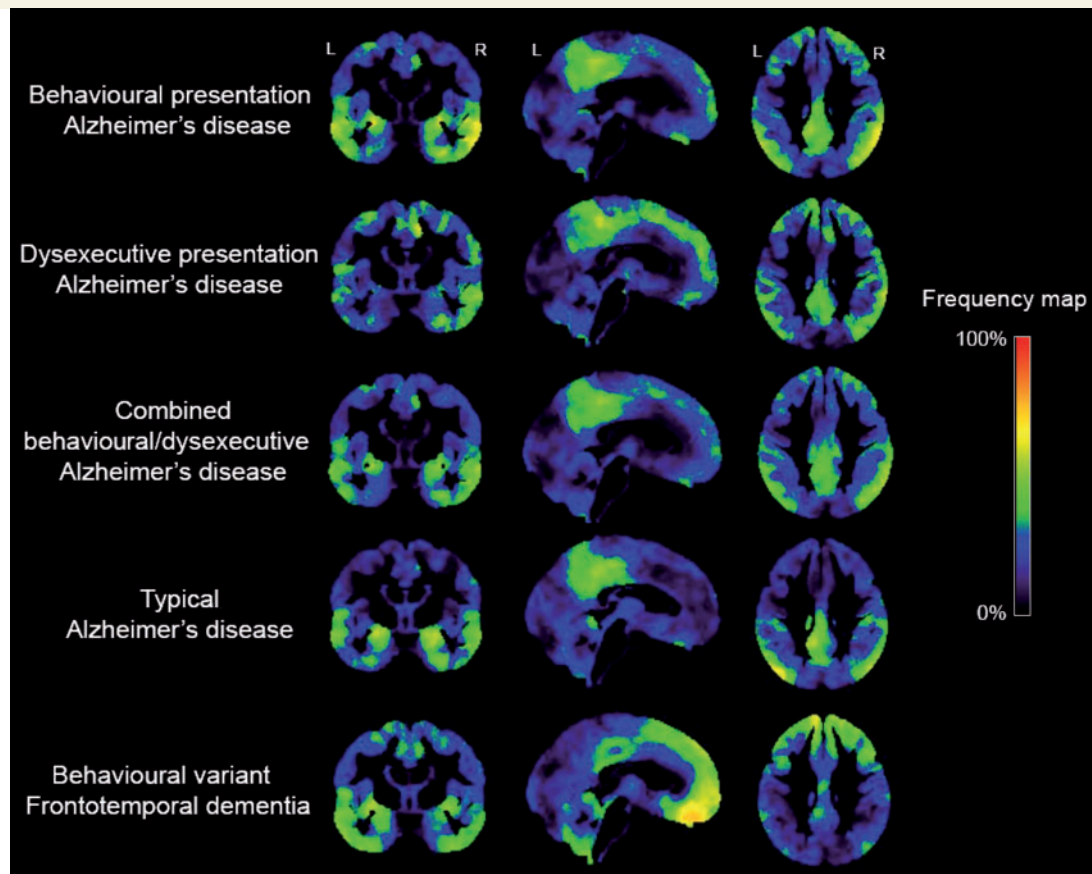
## Neuropathological findings

In the subset of patients with behavioural/dysexecutive Alzheimer's disease who underwent autopsy ( $n = 24$ ), dual Alzheimer's disease and FTLD pathology as co-primary cause for dementia was restricted to two patients with mixed progressive supranuclear palsy and Alzheimer's disease. Another patient harboured unclassifiable limbic/paralimbic TARDBP (also known as TDP) inclusions, which was considered a contributing, rather than the causative, pathology by the neuropathologist. FTLD-tau and FTLD-TDP pathology were thus relatively rare ( $< 10\%$  of all patients), and occurred at a lower rate compared to previous studies demonstrating non-Alzheimer's disease tauopathy in 10–40% and TDP inclusions in 19–57% of more typical

Alzheimer's disease patients (Varma *et al.*, 1999; Forman *et al.*, 2006; Alladi *et al.*, 2007; Amador-Ortiz *et al.*, 2007; Beach *et al.*, 2012; Josephs *et al.*, 2014). Several other co-pathologies were frequently present, but in general these were less extensive compared to the classical plaque and tangle pathology and were thought to have contributed little to the patient's clinical deficits. The proportion of Lewy body disease (42%), cerebrovascular disease (25%) and argyrophilic grain disease (44%) in our patients with behavioural/dysexecutive Alzheimer's disease falls within the range of previous reports on sporadic Alzheimer's disease (Hansen *et al.*, 1990; Mirra *et al.*, 1991; Braak and Braak, 1998; Hamilton, 2000; Togo *et al.*, 2002), while cerebral amyloid angiopathy (64%) may be somewhat less frequent compared to  $\sim 90\%$  found in earlier neuropathological studies in Alzheimer's disease (Kalaria and Ballard, 1999; Attems, 2005). Due to the young average age of patients with behavioural/dysexecutive Alzheimer's disease, comparisons against post-mortem studies in typical Alzheimer's disease should be interpreted with caution as it is known that the onset of a diversity of pathologies accelerates with ageing (Schneider *et al.*, 2007). We further found argyrophilic thorny astrocyte clusters in three patients (Munoz *et al.*, 2007). These 4-repeat tau-positive inclusions may be of interest for future studies as they preferentially localize in frontotemporal and parietal grey-white matter junctions, and may be a common neuropathological feature in atypical manifestations of Alzheimer's disease (Munoz *et al.*, 2007). Future studies will also need to further assess the distribution of amyloid plaques and neurofibrillary tangles in patients with behavioural/dysexecutive Alzheimer's disease (Johnson *et al.*, 1999; Blennerhassett *et al.*, 2014), which was not assessed in our study.

## Behavioural/dysexecutive variant Alzheimer's disease: a continuum or distinct clinical entities?

Driven by previous studies and clinical experience, we developed two distinct sets of inclusion criteria for behavioural-predominant and dysexecutive-predominant Alzheimer's disease patients that cover the spectrum of 'frontal Alzheimer's disease'. Although several potential mechanisms were identified that may differ between behavioural and dysexecutive-predominant presentations of Alzheimer's disease (i.e. *APOE*  $\epsilon 4$  status and cognitive/behavioural profiles), the presence of a single (behaviour) rather than a double dissociation (behaviour and executive dysfunction), suggests at least a certain degree of overlap between the two phenotypes. In this study, we reported results for both combined and distinct groups. Whether these patients represent a single phenotype on a continuum including behavioural features and executive dysfunction, or two separate clinical entities is subject to future studies. We can only conclude that: (i) the majority of patients



**Figure 5 Frequency of brain atrophy.** Frequency maps showing the proportion of patients within each diagnostic group with supratherreshold values ( $W < -1$ ) compared to a group of healthy controls. Hot colours indicate that patients with behavioural/dysexecutive variant Alzheimer's disease (i) strikingly overlapped with patients with typical Alzheimer's disease; and (ii) showed greater involvement of the frontal cortex than patients with typical Alzheimer's disease although to a lesser extent than patients with behavioural variant FTD patients. The methodology for computing these frequency maps is explained in more detail in Supplementary Fig. 1.

selected based on behavioural-predominant presentations also had memory deficits proportionate to or greater than executive impairment; (ii) there were also patients selected based on dysexecutive-predominant presentations showing no significant behavioural changes; and (iii) applying our inclusion criteria resulted in modest overlap between the groups (9/75, 12%).

### Strengths and limitations

The strengths of this study are the relatively large sample of patients with behavioural/dysexecutive Alzheimer's disease, the availability of both antemortem clinical, neuropsychological and neuroimaging data and post-mortem data, and the direct comparison against well-characterized patients with typical Alzheimer's disease and behavioural variant FTD. There are also some limitations. First, the low prevalence of behavioural Alzheimer's disease and dysexecutive Alzheimer's disease compelled us to include patients seen over the course of 15 years. This fact, in addition to data acquisition at two different sites, resulted in some heterogeneity in diagnostic work-up, as dementia screening

and neuropathological protocols evolved over time, higher field-strength MRI scanners were implemented, and there are differences in the timing of clinical assessment and amyloid status determination (i.e. PET/CSF versus autopsy). Second, this is a retrospective study, and clinical data were obtained following standardized chart reviews. In cases of incomplete or ambiguous descriptions, some degree of subjective judgement on the part of the investigators is unavoidable. Also, an ascertainment bias in both directions (i.e. information may be absent in the charts or, in contrast, may be mentioned more frequently as prompted by clinicians) should be taken into account. Third, patients with memory-predominant Alzheimer's disease were relatively young ( $64.4 \pm 8.6$  years) as they were age-matched to patients with behavioural Alzheimer's disease, and may differ in neuropsychological profile and atrophy pattern from late-onset amnesic Alzheimer's disease patients. Fourth, as opposed to autopsy-confirmed patients only, we applied *in vivo* CSF and PET biomarkers as supporting evidence for underlying Alzheimer's disease pathology. Although this does not necessarily exclude the presence of frontotemporal lobar degeneration pathology, our autopsy data show that

**Table 3** Key clinical and neuroimaging features of behavioural/dysexecutive variant Alzheimer's disease

Clinical features	Typical Alzheimer's disease	Behavioural/dysexecutive variant Alzheimer's disease		Behavioural variant FTD
<b>Phenotype</b>	Memory-predominant	Behavioural-predominant	Dysexecutive-predominant	Behavioural
<b>Genetic predisposition</b>				
APOE $\epsilon$ 4 positive	Frequent (~60%) <sup>a</sup>	Frequent (59.5%)	Intermediate (40.0%)	Rare (<20%) <sup>b</sup>
<b>Clinical</b>				
Age-at-onset	Late-onset	Early-onset	Early-onset	Early-onset
First symptom	Cognitive (memory)	Cognitive > behavioural	Cognitive (executive)	Behavioural
<b>Cognition</b>				
Episodic memory	Impaired	Impaired	Relatively spared	Typically spared
Executive function	Relatively spared	Impaired	Impaired	Impaired
Behaviour	Relatively spared	Impaired	Mostly spared	Impaired
<b>MRI</b>				
Atrophy pattern	Medial temporal and temporoparietal lobes	Temporoparietal cortex	Temporoparietal cortex	Frontal and anterior temporal lobes

APOE prevalence estimates derived from <sup>a</sup>Michaelson (2014) <sup>b</sup>Verpillat *et al.* (2002).

the likelihood of mixed primary pathologies was low (<10%). Finally, in contrast to previous autopsy studies (Johnson *et al.*, 1999; Blennerhassett *et al.*, 2014) we were not able to investigate the distribution of amyloid plaque and neurofibrillary tangle pathology across the brain.

## Clinical relevance

Clinical, imaging and neuropathological features of patients with behavioural/dysexecutive Alzheimer's disease are summarized in Table 3 and may serve as a roadmap to identify these patients in a clinical setting. This is important for studying the effects of disease-modifying agents and for appropriate symptomatic treatment (e.g. patients with behavioural/dysexecutive variant Alzheimer's disease may show clinical benefit from acetylcholinesterase inhibitors). The key diagnostic features to distinguish behavioural Alzheimer's disease from behavioural variant FTD are the magnitude of memory impairment and brain atrophy affecting predominantly classical Alzheimer's disease regions in the temporoparietal cortex such as the medial temporal lobes, posterior cingulate and precuneus. Additional clues are provided by a cognitive onset of the disease, presence of an APOE  $\epsilon$ 4 allele and a behavioural profile that is generally less severe than that observed in patients with behavioural variant FTD. Conversely, patients with a dysexecutive presentation without prominent behavioural changes are more likely to have underlying Alzheimer's disease than FTLT pathology. In conclusion, the present study underscores that clinicians should look beyond the prominent and often intrusive behavioural changes, and take full advantage of all information being provided by current diagnostic tools. We propose to start the diagnostic process with extensive history-taking and neuropsychological testing, followed by a brain MRI scan. Voxel-based morphometry yielded a classical Alzheimer's disease pattern in

patients with behavioural/dysexecutive Alzheimer's disease, thus the NIA-AA criteria (McKhann *et al.*, 2011; incorporating neurodegenerative biomarkers, could be more specific than criteria proposed by (Dubois *et al.*, 2014). Finally, if available, amyloid PET or CSF biomarkers could be used to exclude Alzheimer's disease as the causative aetiology in patients with a behavioural or a dysexecutive clinical presentation.

## Acknowledgements

The authors would like to thank Daniel Schonhaut for editing and scientific discussion, Sander Verfaillie for data support, Gaël Chételat and Brigitte Landeau for the inspiration to create W-score frequency maps, Robin Ketelle, Matthew Growdon, Jung Jang, Baber Khan, Teresa Wu for administrative support, and the patients and families for their dedication to research.

## Funding

This research was funded by Marie Curie FP7 International Outgoing Fellowship [628812] (to R.O.); The donors of [Alzheimer's Disease Research], a program of BrightFocus Foundation (to R.O.); National Institute on Aging grants [R01-AG045611] (to G.D.R.), [P01-AG1792403] (to B.L.M. and W.W.S.), [P50-AG023501] (to G.D.R., W.W.S. and B.L.M.), [R01-AG027859] (to W.J.J.), Tau Consortium (to G.D.R., W.W.S. and W.J.J.); Consortium for Frontotemporal Dementia Research (to W.W.S. and B.L.M.); John Douglas French Alzheimer's Foundation (to G.D.R. and B.L.M.); State of California Department of Health Services Alzheimer's Disease Research Centre of California grant [04-33516] (to B.L.M.). Research of the VUMC Alzheimer center is part of the neurodegeneration research program of the Neuroscience Campus Amsterdam.



The VUMC Alzheimer center is supported by Alzheimer Nederland and Stichting VUMC funds. The clinical database structure was developed with funding from Stichting Dioraphte. Aegon NV sponsored a three-month visiting professorship of Dr. Rabinovici to VUMC Alzheimer center, which was partly dedicated to work on the present project.

## Supplementary material

Supplementary material is available at *Brain* online.

## References

- Albert MS, DeKosky ST, Dickson D, Dubois B, Feldman HH, Fox NC, et al. The diagnosis of mild cognitive impairment due to Alzheimer's disease: recommendations from the National Institute on Aging-Alzheimer's Association workgroups on diagnostic guidelines for Alzheimer's disease. *Alzheimer Dement* 2011; 7: 270–9.
- Alladi S, Xuereb J, Bak T, Nestor P, Knibb J, Patterson K, et al. Focal cortical presentations of Alzheimer's disease. *Brain* 2007; 130: 2636–45.
- Amador-Ortiz C, Lin WL, Ahmed Z, Personett D, Davies P, Duara R, et al. TDP-43 immunoreactivity in hippocampal sclerosis and Alzheimer's disease. *Ann Neurol* 2007; 61: 435–45.
- Andrade L, Caraveo-Anduaga JJ, Berglund P, Bijl RV, De Graaf R, Vollebergh W, et al. The epidemiology of major depressive episodes: results from the International Consortium of Psychiatric Epidemiology (ICPE) Surveys. *Int J Methods Psychiatr Res* 2003; 12: 3–21.
- Attems J. Sporadic cerebral amyloid angiopathy: pathology, clinical implications, and possible pathomechanisms. *Acta Neuropathol* 2005; 110: 345–59.
- Back-Madruga C, Boone KB, Briere J, Cummings J, McPherson S, Fairbanks L, et al. Functional ability in executive variant Alzheimer's disease and typical Alzheimer's disease. *Clin Neuropsychol* 2002; 16: 331–40.
- Balasa M, Gelpi E, Antonell A, Rey MJ, Sanchez-Valle R, Molinuevo JL, et al. Clinical features and APOE genotype of pathologically proven early-onset Alzheimer disease. *Neurology* 2011; 76: 1720–5.
- Beach TG, Monsell SE, Phillips LE, Kukull W. Accuracy of the clinical diagnosis of Alzheimer disease at National Institute on Aging Alzheimer Disease Centers, 2005–2010. *J Neuropathol Exp Neurol* 2012; 71: 266–73.
- Benson DF, Davis RJ, Snyder BD. Posterior cortical atrophy. *Arch Neurol* 1988; 45: 789–93.
- Binetti G, Magni E, Padovani A, Cappa SF, Bianchetti A, Trabucchi M. Executive dysfunction in early Alzheimer's disease. *J Neurol Neurosurg Psychiatry* 1996; 60: 91–3.
- Blennerhassett R, Lillo P, Halliday GM, Hodges JR, Kril JJ. Distribution of pathology in frontal variant Alzheimer's disease. *J Alzheimers Dis* 2014; 39: 63–70.
- Braak H, Alafuzoff I, Arzberger T, Kretschmar H, Del Tredici K. Staging of Alzheimer disease-associated neurofibrillary pathology using paraffin sections and immunocytochemistry. *Acta Neuropathol* 2006; 112: 389–404.
- Braak H, Braak E. Neuropathological staging of Alzheimer-related changes. *Acta Neuropathol* 1991; 82: 239–59.
- Braak H, Braak E. Argyrophilic grain disease: frequency of occurrence in different age categories and neuropathological diagnostic criteria. *J Neural Transm* 1998; 105: 801–19.
- Bruen PD, McGeown WJ, Shanks MF, Venneri A. Neuroanatomical correlates of neuropsychiatric symptoms in Alzheimer's disease. *Brain* 2008; 131: 2455–63.
- Cairns NJ, Bigio EH, Mackenzie IR, Neumann M, Lee VM, Hatanpaa KJ, et al. Neuropathologic diagnostic and nosologic criteria for frontotemporal lobar degeneration: consensus of the Consortium for Frontotemporal Lobar Degeneration. *Acta Neuropathol* 2007; 114: 5–22.
- Corrigan JD, Selassie AW, Orman JA. The epidemiology of traumatic brain injury. *J Head Trauma Rehabil* 2010; 25: 72–80.
- Crutch SJ, Lehmann M, Schott JM, Rabinovici GD, Rossor MN, Fox NC. Posterior cortical atrophy. *Lancet Neurol* 2012; 11: 170–8.
- Damasio H, Grabowski T, Frank R, Galaburda AM, Damasio AR. The return of Phineas Gage: clues about the brain from the skull of a famous patient. *Science* 1994; 264: 1102–5.
- Devi G, Williamson J, Massoud F, Anderson K, Stern Y, Devanand DP, et al. A comparison of family history of psychiatric disorders among patients with early- and late-onset Alzheimer's disease. *J Neuropsychiatry Clin Neurosci* 2004; 16: 57–62.
- Dickerson BC, Wolk DA, Alzheimer's Disease Neuroimaging I. Dysexecutive versus amnesic phenotypes of very mild Alzheimer's disease are associated with distinct clinical, genetic and cortical thinning characteristics. *J Neurol Neurosurg Psychiatry* 2011; 82: 45–51.
- Duara R, Barker WW, Lopez-Alberola R, Loewenstein DA, Grau LB, Gilchrist D, et al. Alzheimer's disease: interaction of apolipoprotein E genotype, family history of dementia, gender, education, ethnicity, and age of onset. *Neurology* 1996; 46: 1575–9.
- Dubois B, Feldman HH, Jacova C, Hampel H, Molinuevo JL, Blennow K, et al. Advancing research diagnostic criteria for Alzheimer's disease: the IWG-2 criteria. *Lancet Neurol* 2014; 13: 614–29.
- Duits FH, Teunissen CE, Bouwman FH, Visser PJ, Mattsson N, Zetterberg H, et al. The cerebrospinal fluid “Alzheimer profile”: Easily said, but what does it mean? *Alzheimer Dement* 2014; 10: 713–23.
- Farrer LA, Cupples LA, Haines JL, Hyman B, Kukull WA, Mayeux R, et al. Effects of age, sex, and ethnicity on the association between apolipoprotein E genotype and Alzheimer disease. A meta-analysis. APOE and Alzheimer Disease Meta Analysis Consortium. *JAMA* 1997; 278: 1349–56.
- Folstein MF, Folstein SE, McHugh PR. Mini-mental state. A practical method for grading the cognitive state of patients for the clinician. *J Psychiatr Res* 1975; 12: 189–98.
- Forman MS, Farmer J, Johnson JK, Clark CM, Arnold SE, Coslett HB, et al. Frontotemporal dementia: clinicopathological correlations. *Ann Neurol* 2006; 59: 952–62.
- Gorno-Tempini ML, Hillis AE, Weintraub S, Kertesz A, Mendez M, Cappa SF, et al. Classification of primary progressive aphasia and its variants. *Neurology* 2011; 76: 1006–14.
- Habek M, Hajnsek S, Zarkovic K, Chudy D, Mubrin Z. Frontal variant of Alzheimer's disease: clinico-CSF-pathological correlation. *Can J Neurol Sci* 2010; 37: 118–20.
- Hamilton RL. Lewy bodies in Alzheimer's disease: a neuropathological review of 145 cases using alpha-synuclein immunohistochemistry. *Brain Pathol* 2000; 10: 378–84.
- Hansen L, Salmon D, Galasko D, Masliah E, Katzman R, DeTeresa R, et al. The Lewy body variant of Alzheimer's disease: a clinical and pathologic entity. *Neurology* 1990; 40: 1–8.
- Herrero-San Martin A, Villarejo-Galende A, Rabano-Gutierrez A, Guerrero-Marquez C, Porta-Etessam J, Bermejo-Pareja F. Frontal variant of Alzheimer's disease. Two pathologically confirmed cases and a literature review [in Spanish]. *Rev Neurol* 2013; 57: 542–8.
- Hyman BT, Trojanowski JQ. Consensus recommendations for the postmortem diagnosis of Alzheimer disease from the National Institute on Aging and the Reagan Institute Working Group on diagnostic criteria for the neuropathological assessment of Alzheimer disease. *J Neuropathol Exp Neurol* 1997; 56: 1095–7.

- Ikonomovic MD, Klunk WE, Abrahamson EE, Mathis CA, Price JC, Tsopelas ND, et al. Post-mortem correlates of in vivo PiB-PET amyloid imaging in a typical case of Alzheimer's disease. *Brain* 2008; 131: 1630–45.
- Jack CR Jr, Petersen RC, Xu YC, Waring SC, O'Brien PC, Tangalos EG, et al. Medial temporal atrophy on MRI in normal aging and very mild Alzheimer's disease. *Neurology* 1997; 49: 786–94.
- Johnson JK, Head E, Kim R, Starr A, Cotman CW. Clinical and pathological evidence for a frontal variant of Alzheimer disease. *Arch Neurol* 1999; 56: 1233–9.
- Josephs KA, Whitwell JL, Weigand SD, Murray ME, Tosakulwong N, Liesinger AM, et al. TDP-43 is a key player in the clinical features associated with Alzheimer's disease. *Acta Neuropathol* 2014; 127: 811–24.
- Kalaria RN, Ballard C. Overlap between pathology of Alzheimer disease and vascular dementia. *Alzheimer Dis Assoc Disord* 1999; 13 (Suppl 3): S115–23.
- Kaufer DI, Cummings JL, Ketchel P, Smith V, MacMillan A, Shelley T, et al. Validation of the NPI-Q, a brief clinical form of the Neuropsychiatric Inventory. *J Neuropsychiatry Clin Neurosci* 2000; 12: 233–9.
- Kim HJ, Kang SJ, Kim C, Kim GH, Jeon S, Lee JM, et al. The effects of small vessel disease and amyloid burden on neuropsychiatric symptoms: a study among patients with subcortical vascular cognitive impairments. *Neurobiol Aging* 2013; 34: 1913–20.
- Klunk WE, Engler H, Nordberg A, Wang Y, Blomqvist G, Holt DP, et al. Imaging brain amyloid in Alzheimer's disease with Pittsburgh Compound-B. *Ann Neurol* 2004; 55: 306–19.
- La Joie R, Perrotin A, Barre L, Hommet C, Mezenge F, Ibazizene M, et al. Region-specific hierarchy between atrophy, hypometabolism, and beta-amyloid (A $\beta$ ) load in Alzheimer's disease dementia. *J Neurosci* 2012; 32: 16265–73.
- Landau SM, Lu M, Joshi AD, Pontecorvo M, Mintun MA, Trojanowski JQ, et al. Comparing positron emission tomography imaging and cerebrospinal fluid measurements of beta-amyloid. *Ann Neurol* 2013; 74: 826–36.
- Larner AJ. Frontal variant Alzheimer's disease: a reappraisal. *Clin Neurol Neurosurg* 2006; 108: 705–8.
- Lee SE, Rabinovici GD, Mayo MC, Wilson SM, Seeley WW, DeArmond SJ, et al. Clinicopathological correlations in corticobasal degeneration. *Ann Neurol* 2011; 70: 327–40.
- Lehmann M, Ghosh PM, Madison C, Karydas A, Coppola G, O'Neil JP, et al. Greater medial temporal hypometabolism and lower cortical amyloid burden in ApoE4-positive AD patients. *J Neurol Neurosurg Psychiatry* 2014; 85: 266–73.
- Lehmann M, Ghosh PM, Madison C, Laforce R Jr., Corbetta-Rastelli C, Weiner MW, et al. Diverging patterns of amyloid deposition and hypometabolism in clinical variants of probable Alzheimer's disease. *Brain* 2013a; 136: 844–58.
- Lehmann M, Madison CM, Ghosh PM, Seeley WW, Mormino E, Greicius MD, et al. Intrinsic connectivity networks in healthy subjects explain clinical variability in Alzheimer's disease. *Proc Natl Acad Sci* 2013b; 110: 11606–11.
- Mackenzie IR, Neumann M, Bigio EH, Cairns NJ, Alafuzoff I, Kril J, et al. Nomenclature and nosology for neuropathologic subtypes of frontotemporal lobar degeneration: an update. *Acta Neuropathol* 2010; 119: 1–4.
- Manning EN, Barnes J, Cash DM, Bartlett JW, Leung KK, Ourselin S, et al. APOE epsilon4 is associated with disproportionate progressive hippocampal atrophy in AD. *PloS One* 2014; 9: e97608.
- McKhann GM, Knopman DS, Chertkow H, Hyman BT, Jack CR Jr, Kawas CH, et al. The diagnosis of dementia due to Alzheimer's disease: recommendations from the National Institute on Aging-Alzheimer's Association workgroups on diagnostic guidelines for Alzheimer's disease. *Alzheimers Dement* 2011; 7: 263–9.
- Mendez MF, Lee AS, Joshi A, Shapira JS. Nonamnestic presentations of early-onset Alzheimer's disease. *Am J Alzheimers Dis Other Dement* 2012; 27: 413–20.
- Mendez MF, Joshi A, Tassniyom K, Teng E, Shapira JS. Clinicopathologic differences among patients with behavioural variant frontotemporal dementia. *Neurology* 2013; 80: 561–8.
- Mesulam M, Wicklund A, Johnson N, Rogalski E, Leger GC, Rademaker A, et al. Alzheimer and frontotemporal pathology in subtypes of primary progressive aphasia. *Ann Neurol* 2008; 63: 709–19.
- Mez J, Cosentino S, Brickman AM, Huey ED, Manly JJ, Mayeux R. Dysexecutive versus amnestic Alzheimer disease subgroups: analysis of demographic, genetic, and vascular factors. *Alzheimer Dis Assoc Disord* 2013; 27: 218–25.
- Michaelson DM. ApoE4: The most prevalent yet understudied risk factor for Alzheimer's disease. *Alzheimer's Dement* 2014; 10: 861–8.
- Mirra SS, Heyman A, McKeel D, Sumi SM, Crain BJ, Brownlee LM, et al. The Consortium to Establish a Registry for Alzheimer's Disease (CERAD). Part II. Standardization of the neuropathologic assessment of Alzheimer's disease. *Neurology* 1991; 41: 479–86.
- Moller C, Vrenken H, Jiskoot L, Versteeg A, Barkhof F, Scheltens P, et al. Different patterns of gray matter atrophy in early- and late-onset Alzheimer's disease. *Neurobiol Aging* 2013; 34: 2014–22.
- Montine TJ, Phelps CH, Beach TG, Bigio EH, Cairns NJ, Dickson DW, et al. National Institute on Aging-Alzheimer's Association guidelines for the neuropathologic assessment of Alzheimer's disease: a practical approach. *Acta Neuropathol* 2012; 123: 1–11.
- Morris JC. The Clinical Dementia Rating (CDR): current version and scoring rules. *Neurology* 1993; 43: 2412–4.
- Munoz DG, Woulfe J, Kertesz A. Argophilic thorny astrocyte clusters in association with Alzheimer's disease pathology in possible primary progressive aphasia. *Acta Neuropathol* 2007; 114: 347–57.
- Neary D, Snowden JS, Gustafson L, Passant U, Stuss D, Black S, et al. Frontotemporal lobar degeneration: a consensus on clinical diagnostic criteria. *Neurology* 1998; 51: 1546–54.
- Neufang S, Akhrif A, Riedl V, Forstl H, Kurz A, Zimmer C, et al. Disconnection of frontal and parietal areas contributes to impaired attention in very early Alzheimer's disease. *J Alzheimer Dis* 2011; 25: 309–21.
- Nwankwo T, Yoon SS, Burt V, Gu Q. Hypertension among adults in the United States: National Health and Nutrition Examination Survey, 2011–2012. *NCHS Data Brief* 2013; 133: 1–8.
- Ossenkoppele R, Prins ND, Pijnenburg YA, Lemstra AW, van der Flier WM, Adriaanse SF, et al. Impact of molecular imaging on the diagnostic process in a memory clinic. *Alzheimers Dement* 2013a; 9: 414–21.
- Ossenkoppele R, Tolboom N, Foster-Dingley JC, Adriaanse SF, Boellaard R, Yaqub M, et al. Longitudinal imaging of Alzheimer pathology using [11C]PIB, [18F]FDDNP and [18F]FDG PET. *Eur J Nuc Med Mol Imaging* 2012a; 39: 990–1000.
- Ossenkoppele R, van der Flier WM, Zwan MD, Adriaanse SF, Boellaard R, Windhorst AD, et al. Differential effect of APOE genotype on amyloid load and glucose metabolism in AD dementia. *Neurology* 2013b; 80: 359–65.
- Ossenkoppele R, Zwan MD, Tolboom N, van Assema DM, Adriaanse SF, Kloet RW, et al. Amyloid burden and metabolic function in early-onset Alzheimer's disease: parietal lobe involvement. *Brain* 2012b; 135: 2115–25.
- Pa J, Boxer A, Chao LL, Gazzaley A, Freeman K, Kramer J, et al. Clinical-neuroimaging characteristics of dysexecutive mild cognitive impairment. *Ann Neurol* 2009; 65: 414–23.
- Poirier J, Davignon J, Bouthillier D, Kogan S, Bertrand P, Gauthier S. Apolipoprotein E polymorphism and Alzheimer's disease. *Lancet* 1993; 342: 697–9.
- Rabinovici GD, Furst AJ, Alkalay A, Racine CA, O'Neil JP, Janabi M, et al. Increased metabolic vulnerability in early-onset Alzheimer's disease is not related to amyloid burden. *Brain* 2010; 133: 512–28.

- Rabinovici GD, Rosen HJ, Alkalay A, Kornak J, Furst AJ, Agarwal N, et al. Amyloid vs FDG-PET in the differential diagnosis of AD and FTL. *Neurology* 2011; 77: 2034–42.
- Rascovsky K, Hodges JR, Knopman D, Mendez MF, Kramer JH, Neuhaus J, et al. Sensitivity of revised diagnostic criteria for the behavioural variant of frontotemporal dementia. *Brain* 2011; 134: 2456–77.
- Reed BR, Eberling JL, Mungas D, Weiner M, Kramer JH, Jagust WJ. Effects of white matter lesions and lacunes on cortical function. *Arc Neurol* 2004; 61: 1545–50.
- Schneider JA, Arvanitakis Z, Bang W, Bennett DA. Mixed brain pathologies account for most dementia cases in community-dwelling older persons. *Neurology* 2007; 69: 2197–204.
- Schoonenboom NS, Reesink FE, Verwey NA, Kester MI, Teunissen CE, van de Ven PM, et al. Cerebrospinal fluid markers for differential dementia diagnosis in a large memory clinic cohort. *Neurology* 2012; 78: 47–54.
- Sjoberck M, Elfgren C, Larsson EM, Brockstedt S, Latt J, Englund E, et al. Alzheimer's disease (AD) and executive dysfunction. A case-control study on the significance of frontal white matter changes detected by diffusion tensor imaging (DTI). *Arch Gerontol Geriatr* 2010; 50: 260–6.
- Sluimer JD, van der Flier WM, Karas GB, Fox NC, Scheltens P, Barkhof F, et al. Whole-brain atrophy rate and cognitive decline: longitudinal MR study of memory clinic patients. *Radiology* 2008; 248: 590–8.
- Snowden JS, Stopford CL, Julien CL, Thompson JC, Davidson Y, Gibbons L, et al. Cognitive phenotypes in Alzheimer's disease and genetic risk. *Cortex* 2007; 43: 835–45.
- Soldatos CR, Lugaresi E. Nosology and prevalence of sleep disorders. *Sem Neurol* 1987; 7: 236–42.
- Strozyk D, Blennow K, White LR, Launer LJ. CSF Aβ<sub>42</sub> levels correlate with amyloid-neuropathology in a population-based autopsy study. *Neurology* 2003; 60: 652–6.
- Taylor KI, Probst A, Miserez AR, Monsch AU, Tolnay M. Clinical course of neuropathologically confirmed frontal-variant Alzheimer's disease. *Nat Clin Pract Neurol* 2008; 4: 226–32.
- Thal DR, Rub U, Orantes M, Braak H. Phases of Aβ<sub>42</sub>-deposition in the human brain and its relevance for the development of AD. *Neurology* 2002; 58: 1791–800.
- Togo T, Sahara N, Yen SH, Cookson N, Ishizawa T, Hutton M, et al. Argpyrophilic grain disease is a sporadic 4-repeat tauopathy. *J Neuropath Exp Neurol* 2002; 61: 547–56.
- van der Flier WM, Pijnenburg YA, Fox NC, Scheltens P. Early-onset versus late-onset Alzheimer's disease: the case of the missing APOE ε4 allele. *Lancet Neurol* 2011; 10: 280–8.
- van der Flier WM, Pijnenburg YA, Prins N, Lemstra AW, Bouwman FH, Teunissen CE, et al. Optimizing patient care and research: the Amsterdam Dementia Cohort. *J Alzheimer Dis* 2014; 41: 313–27.
- Vandenberghe R, Van Laere K, Ivanoiu A, Salmon E, Bastin C, Triau E, et al. 18F-flutemetamol amyloid imaging in Alzheimer disease and mild cognitive impairment: a phase 2 trial. *Ann Neurol* 2010; 68: 319–29.
- Varma AR, Snowden JS, Lloyd JJ, Talbot PR, Mann DM, Neary D. Evaluation of the NINCDS-ADRDA criteria in the differentiation of Alzheimer's disease and frontotemporal dementia. *J Neurol Neurosurg Psychiatry* 1999; 66: 184–8.
- Verpillat P, Camuzat A, Hannequin D, Thomas-Anterion C, Puel M, Belliard S, et al. Apolipoprotein E gene in frontotemporal dementia: an association study and meta-analysis. *Eur J Hum Genet* 2002; 10: 399–405.
- Wild S, Roglic G, Green A, Sicree R, King H. Global prevalence of diabetes: estimates for the year 2000 and projections for 2030. *Diabetes Care* 2004; 27: 1047–53.
- Wolk DA, Dickerson BC. Alzheimer's Disease Neuroimaging I. Apolipoprotein E (APOE) genotype has dissociable effects on memory and attentional-executive network function in Alzheimer's disease. *Proc Natl Acad Sci* 2010; 107: 10256–61.
- Woodward M, Jacova C, Black SE, Kertesz A, Mackenzie IR, Feldman H, et al. Differentiating the frontal variant of Alzheimer's disease. *Int J Geriatr Psychiatry* 2010; 25: 732–8.
- Woodward MC, Rowe CC, Jones G, Villemagne VL, Varos TA. Differentiating the frontal presentation of Alzheimer's disease with FDG-PET. *J Alzheimer Dis* 2014; 44: 233–42.
- Yesavage JA, Brink TL, Rose TL, Lum O, Huang V, Adey M, et al. Development and validation of a geriatric depression screening scale: a preliminary report. *J Psychiatr Res* 1982; 17: 37–49.
- Zwan M, van Harten A, Ossenkoppele R, Bouwman F, Teunissen C, Adriaanse S, et al. Concordance between cerebrospinal fluid biomarkers and [11C]PIB PET in a memory clinic cohort. *J Alzheimer Dis* 2014; 41: 801–7.