

Lawrence Berkeley National Laboratory

Lawrence Berkeley National Laboratory

Title

Heavy Quarkonium Production in Single Transverse Polarized High Energy Scattering

Permalink

<https://escholarship.org/uc/item/1qv416hn>

Author

Yuan, Feng

Publication Date

2008-06-24

Heavy Quarkonium Production in Single Transverse Polarized High Energy Scattering

Feng Yuan*

*Nuclear Science Division, Lawrence Berkeley National Laboratory, Berkeley, CA 94720 and
RIKEN BNL Research Center, Building 510A,
Brookhaven National Laboratory, Upton, NY 11973*

Abstract

We formulate the single transverse spin asymmetry in heavy quarkonium production in lepton-nucleon and nucleon-nucleon collisions in the non-relativistic limit. We find that the asymmetry is very sensitive to the production mechanism. The final state interactions with the heavy quark and antiquark cancel out among themselves when the pair are produced in a color-singlet configuration, or cancel out with the initial state interaction in pp scattering when they are in color-octet. As a consequence, the asymmetry is nonzero in ep collisions only in the color-octet model, whereas in pp collisions only in the color-singlet model.

*Electronic address: fyuan@lbl.gov

1. Introduction. Single-transverse spin asymmetry (SSA) is a novel phenomena in hadronic reactions [1, 2], and has long been observed in various processes. In these processes, a transversely polarized nucleon scatters off a unpolarized nucleon (or virtual photon) target, and the final observed hadron have asymmetric distribution in the transverse plane perpendicular to the beam direction depending on the polarization vector of the scattering nucleon. Recent experimental studies have motivated much theoretical developments for understanding the underlying physics associated with the SSA phenomena.

An important theoretical progress made in the last few years is the uncover of the crucial role of the initial/final state interactions [3], which leads to a non-vanishing SSA in the Bjorken limit in the semi-inclusive hadron production in deep inelastic scattering (SIDIS) and Drell-Yan lepton pair production processes. These initial/final state interactions were understood as a result of the gauge link in the gauge invariant transverse momentum dependent (TMD) quark distributions [4–6], and the SSA can be traced back to a naive time-reversal-odd distribution, the so-called Sivers function [7]. The difference between the initial and final state interaction in the above two processes results into a sign change for the associated quark Sivers function and the SSAs. The Sivers function has been extended to the gluon sector, and the associated prospects have been investigated in recent years [8–13].

Heavy quark and quarkonium productions are natural probes for the gluon Sivers function [10, 14]. Especially at low transverse momentum, their production will be sensitive to the intrinsic transverse momentum [15], and can be used to study the gluon Sivers effect. Meanwhile, the heavy quarkonium production has attracted many experimental and theoretical investigations in the last decade, starting from the anomalous production discovered at the Tevatron $p\bar{p}$ experiment [16] and a theoretical framework for studying the heavy quarkonium system, the so-called non-relativistic QCD (NRQCD) [17]. The basic argument for the NRQCD factorization is that the heavy quark pair are produced at short distance in a color-singlet or color-octet configurations. The hadronization of the pair (in singlet or octet) is described by the associated matrix elements, which can be characterized according to the velocity expansion [17]. This framework had success in explaining some experimental observations. Yet, we do not have a definitive answer for the production mechanism [18–21].

In this paper, we formulate the SSA in heavy quarkonium production by carefully examining the initial and final state interaction effects. We follow the general arguments of the NRQCD factorization. The SSA depends on the color configuration of the pair produced

at short distance, although the hadronization details are not relevant to obtaining a non-zero SSA. Therefore, the experimental study of the SSAs shall shed light on the production mechanism for the heavy quarkonium. We will focus on the gluon-gluon (photon-gluon) fusion contributions in two processes: one is the lepton-nucleon ep scattering and one is nucleon-nucleon pp scattering, schematically as

$$A(P_A, S_\perp) + B(P_B) \rightarrow [Q\bar{Q}]^{(1,8)} + X \rightarrow H + X, \quad (1)$$

where A is the polarized nucleon with momentum P_A , B the un-polarized hadron or photon with momentum P_B . The heavy quark pair $Q\bar{Q}$ produced at short distance ($\sim 1/M_Q$, M_Q the heavy quark mass) can be in a color-singlet (labeled with (1)) or color-octet (labeled with (8)) configurations, and H represents the final physical quarkonium state. The SSAs coming from the initial/final state interactions are calculated based on the interactions between the quark pair or the incident gluon with the remanet of the polarized target. We are interested in a kinematic region of low transverse momentum for the heavy quarkonium, $P_\perp \ll M_Q$, where the TMD parton distribution is relevant. In the following, we will present a general analysis for the SSAs coming from these interactions in this kinematic region.. A detailed argument for low P_\perp factorization in terms of the TMD parton distributions is also important. Especially, when P_\perp is the same order of the heavy quark kinetic energy in the quarkonium's rest frame, the Coulomb gluon radiation from the heavy quark might interfere with the initial gluon radiation and break the TMD factorization [15, 22]. We will come to this important issue in the future.

2. Final state interactions with the quark pair in the non-relativistic limit. We first discuss how to formulate the final state interactions effects with the quark pair, taking the lepton-nucleon scattering as an example. In this process, the dominant subprocess is the photon-gluon fusion channel, where the photon comes from the lepton radiation. As we discussed in the introduction, in order to obtain a nonzero Sivers-type SSA, we have to generate a phase from either the initial or final state interactions. Because the lepton (photon) is colorless, there is no initial state interaction in this process.

In Figs. 1 and 2 we plot the generic final state interaction diagrams, for color-singlet and color-octet cases, respectively. If the pair are produced in a color-single configuration, a gluon has to be radiated. In general, we will have final state interactions with the quark pair (Fig. 1(a,b)) and the radiated gluon (Fig. 1(c,d)). The interaction with the unobserved

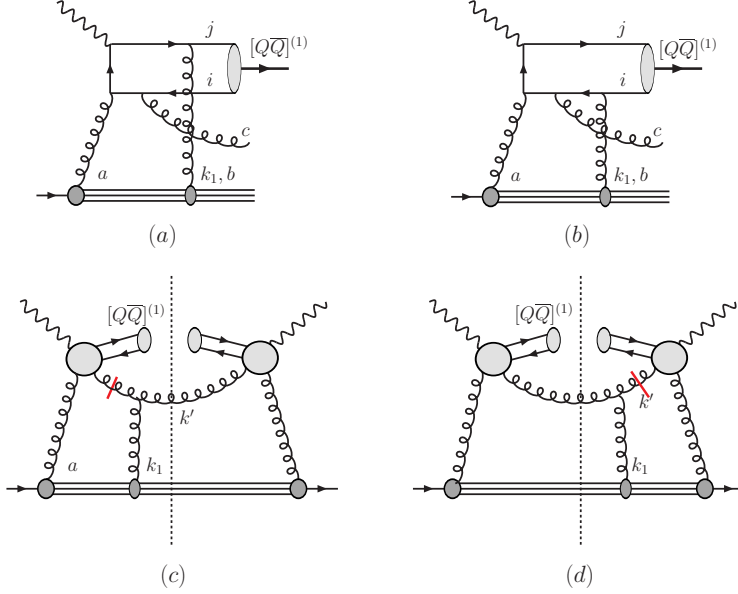


FIG. 1: *Vanishing SSA in photo(lepto)-production of heavy quarkonium when the heavy quark pair are produced in a color-singlet configuration. The two final state interactions with the quark (a) and antiquark (b) cancel out each other; the final state interactions with the unobserved particles cancel out among different cuts.*

particle (here is the radiated gluon) vanishes after we summing different cut diagrams [2, 23]. For example, the contribution from Fig. 1(c) is proportional to pole contribution from the propagator labeled by a short bar with momentum $k' + k_1$,

$$\frac{1}{(k' + k_1)^2 + i\epsilon} \delta((k')^2)|_{\text{pole}} = -i\pi \delta((k' + k_1)^2) \delta((k')^2),$$

whereas the contribution from Fig. 1(d) will be

$$\frac{1}{(k')^2 - i\epsilon} \delta((k' + k_1)^2)|_{\text{pole}} = +i\pi \delta((k')^2) \delta((k' + k_1)^2).$$

Clearly, these two contributions cancel out each other, because the other parts of the scattering amplitudes for these two diagrams are the same except the above pole contributions which are opposite to each other. The above result is quite general, and shows that all the final state interactions with the unobserved particles do not contribute to the SSA for the associated process.

Therefore, we only need to consider the final state interactions with the quark pair. Two example diagrams are shown in Figs. 1(a) and (b). In the non-relativistic limit, the final

state interaction with the quark in Fig. 1(a) can be derived as follows,

$$\begin{aligned} & \Phi(k - \frac{P}{2}; ij)(-ig)\gamma^\rho T^b i \frac{\not{k} - \not{k}_1 + M_Q}{(k - k_1)^2 - M_Q^2 + i\epsilon} \Gamma \\ & \approx \frac{g}{-k_1^+ + i\epsilon} \Phi(k - \frac{P}{2}; ij) T^b \Gamma, \end{aligned} \quad (2)$$

where k and P are momenta for the quark and the quark pair, respectively, Φ represents the wave function for the pair, ij are color indices for the quark and antiquark, b is the color index for the gluon attaching to the quark line, ρ is the index contracted with the gauge potential A^ρ , and Γ represents other hard part for the scattering amplitude. The light-cone momentum components are defined as $k^\pm = (k^0 \pm k^z)/\sqrt{2}$, and we assume that the polarized nucleon is moving along the $+\hat{z}$ direction: $P_A = (P_A^+, 0^-, 0_\perp)$. In the non-relativistic limit, each of the quark and antiquark carries half of the pair's momentum, $k \approx P/2$, and they are on mass shell: $k^2 \approx M_Q^2$. More over, the dominant contribution from the gluon interaction with the nucleon remanet comes from the gauge potential A^+ in the covariant gauge, and where the gluon momentum is collinear to the polarized nucleon. In above derivation, we have also only taken the leading power contributions, and neglected all higher order correction in terms of $1/M_Q$. This derivation shows that we can simplify the final state interaction as an eikonal propagator. Similarly, when the gluon attaches to the antiquark, Fig. 1(b), the contribution will be proportional to

$$\frac{-g}{-k_1^+ + i\epsilon} T^b \Phi(k - \frac{P}{2}; ij) \Gamma, \quad (3)$$

where the Γ is the same as above. The minus sign of this result comes from the interaction with the antiquark. We can combine the contributions from these two diagrams together, and it is proportional to

$$\frac{g}{-k_1^+ + i\epsilon} \left(\Phi(k - \frac{P}{2}; ij) T^b - T^b \Phi(k - \frac{P}{2}; ij) \right) \Gamma. \quad (4)$$

From this, we immediate find that the SSA contribution vanishes if the pair are produced in a color-singlet configuration, for which the color matrix for Φ will be $\Phi_{ij}^{(1)} \propto \delta_{ij}$, and the above two terms cancel out each other completely. This observation is generic, and only depends on the non-relativistic approximation we made and it is valid for higher orders too. Therefore, we conclude that the SSA for heavy quarkonium production in ep scattering vanishes in the non-relativistic limit in the color-singlet model.

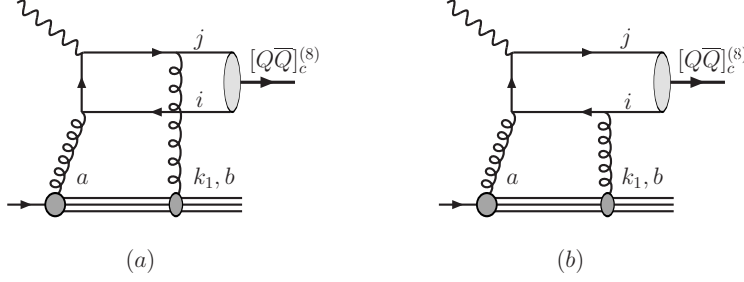


FIG. 2: Nonzero SSA in ep collisions arise when the heavy quark pair are produced in a color-octet configuration. The two final state interactions with the quark (a) and antiquark (b) have net effects.

However, the above arguments do not hold when the pair are produced in a color-octet configuration, for which we will have net effects from the two final state interactions. We show these interactions in Fig. 2. Because the pair are in color-octet, the color matrix of the wave function can be parameterized as $\Phi_{ij}^{(8,c)} \propto T_{ij}^c$ where $c = 1, \dots, 8$ represents the color-index of the pair. The sum of the two final state interactions will be proportional to

$$\frac{g}{-k_1^+ + i\epsilon} (-if_{bcd}) \Phi^{(8,d)} \Gamma, \quad (5)$$

where the latter factor is the same hard part in the above scattering amplitude. This result can be summarized into a diagram shown in Fig. 3(a), and can be easily extended to a two-gluon exchange contributions (b), which is proportional to

$$\frac{g}{-k_2^+ + i\epsilon} \frac{g}{-k_1^+ - k_2^+ + i\epsilon} (-if_{dce}) (-if_{bef}) \Phi^{(8,f)} \Gamma. \quad (6)$$

When it is generalized to all orders, we will find the final state interactions can be summed into a gauge link associated with the gluon distribution, and the SSA depends on the gluon Sivers function, which is the spin-dependent part of the following distribution [25],

$$xG_{1T}^\perp(x, k_\perp) = \int \frac{d\xi^- d^2\xi_\perp}{P^+(2\pi)^3} e^{-ixP^+\xi^- + i\vec{k}_\perp \cdot \vec{\xi}_\perp} \quad (7)$$

$$\times \left\langle PS_\perp | F^+_\mu(\xi^-, \xi_\perp) \mathcal{L}_{\xi^-, \xi_\perp}^\dagger \mathcal{L}_{0,0_\perp} F^{\mu+}(0) | PS_\perp \right\rangle,$$

where sum over color indices is implicit. $F^{\mu\nu}$ is the gluon field strength tensor, $F_a^{\mu\nu} = \partial^\mu A_a^\nu - \partial^\nu A_a^\mu - gf_{abc} A_b^\mu A_c^\nu$, x the momentum fraction carried by the gluon, k_\perp the transverse momentum. \mathcal{L}_ξ the process-dependent gauge link [4, 5]. For the diagrams in Fig. 3, the gauge link sums all the final state interactions with the quark pair (in color-octet state), for

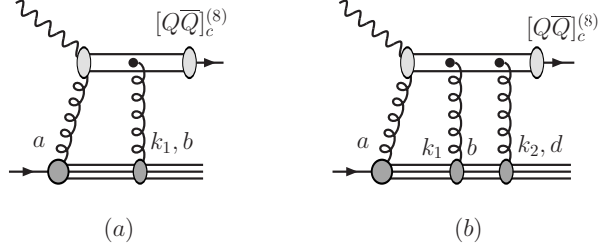


FIG. 3: Summarize the two final state interactions in Fig. 2 into a gauge link associated with the gluon interaction.

which we have future pointing gauge link going to $+\infty$,

$$\mathcal{L}_{\xi^-, \xi_\perp} \rightarrow \mathcal{L}_\xi^\infty = P \exp \left(-ig \int_0^\infty d\zeta^- A^+(\zeta^- + \xi) \right), \quad (8)$$

in the covariant gauge, where $A^\mu = A_c^{\mu t^c}$ is the gluon potential in the adjoint representation, with $t_{ab}^c = -if_{abc}$. A transverse gauge link at the spatial infinity is needed to retain the gauge invariance in a singular gauge [5].

A potential contribution to the above gluon Sivers function comes from the quark Sivers function by splitting. Following the calculations in [24], we find that the large k_\perp gluon Sivers function can be generated from the twist-three quark-gluon correlation function $T_F(x)$ [2],

$$G_{1T}^\perp = \frac{\alpha_s}{2\pi^2} \frac{\epsilon^{\alpha\beta} S_\perp^\alpha k_\perp^\beta}{(\vec{k}_\perp^2)^2} \frac{N_c}{2} \int \frac{dx'}{x'} \left\{ \left(x' \frac{\partial}{\partial x'} T_F(x', x') \right) \times (1 - \xi) [1 + (1 - \xi)^2] + T_F(x', x') 2(1 - \xi)^2 \right\}, \quad (9)$$

where $\xi = x/x'$ and a sum over all quark flavor is implicit. The overall sign of this distribution depends on the relative contribution from the derivative and non-derivative terms, and the up and down quark contributions.

In summary, the SSA in ep collisions vanishes in the color-single model, but survives in the color-octet model.

3. SSA in pp collisions. Now, we turn to the SSA in heavy quarkonium production in pp collisions. In this process, we have both initial and final state interactions. However, as we showed above, when the heavy quark pair are produced in a color-singlet configuration, there is no final state interaction, and we only have initial state interaction contribution. We show a typical diagram in Fig. 4(a) in the gluon-gluon fusion subprocess. This diagram is in particular the dominant channel for χ_c production in the color-singlet model [17]. The

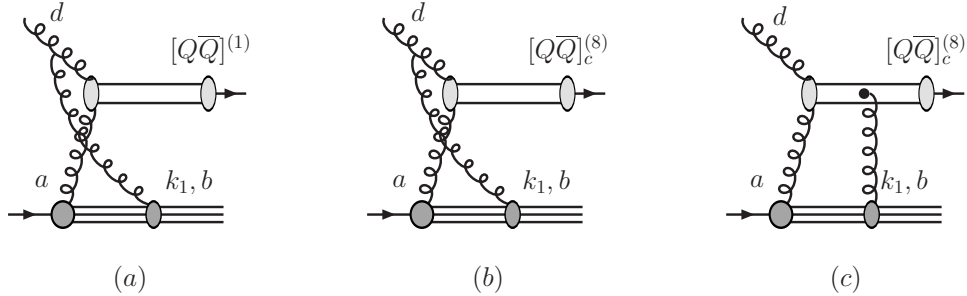


FIG. 4: Only initial state interactions contribute to the SSA in hadron-production process in the color-singlet model (a). On the other hand, the SSA vanishes in the color-octet model, because the cancelation between initial (b) and final (c) state interactions.

initial state interactions for this diagram can be analyzed, and we find the SSA will depend on the gluon Sivers function defined in Eq. (7), however with a gauge link going to $-\infty$,

$$\mathcal{L}_{\xi^-, \xi_\perp} \rightarrow \mathcal{L}_{\xi^-}^{-\infty} = P \exp \left(-ig \int_0^{-\infty} d\zeta^- A^+(\zeta^- + \xi) \right), \quad (10)$$

and the associated SSA will be opposite.

However, if the quark pair are produced in a color-octet configuration, we will have both initial and final state interactions. After taking into account both contributions, the associated gauge link becomes, $\mathcal{L}_{\xi^-, \xi_\perp} \rightarrow \mathcal{L}_{\xi^-}^{-\infty} \mathcal{L}_{\xi^-}^{\infty}$, which is responsible for the SSA. However, the contributions from the two gauge links cancel out each other completely. This is because the combined gauge link is invariant under time-reversal transformation: the two gauge links transform into each other and the combined one remains the same. We have also checked this cancelation by an explicit calculation up to two gluon exchange contributions. This result indicates that a standard TMD factorization breaks down for this case, similar to recent discussions on the dijet-correlation in hadronic collisions [26].

4. Summary. In this paper, we have formulated the single spin asymmetry in heavy quarkonium production in high energy scattering in the non-relativistic limit which should be valid in the limit $M_Q \rightarrow \infty$. Very interesting observations were found. The SSA vanishes in ep collision when the pair are produced in a color-singlet configuration, and a nonzero SSA arises from the color-octet contribution from the gluon Sivers function with the gauge link pointing to $+\infty$. On the other hand, the SSA in pp collisions in the color-single model depends on the initial state interactions leading to a gluon Sivers function with gauge link pointing to $-\infty$, and the initial and final state interactions cancel out each other in the

color-octet model and the SSA vanishes to all orders.

In our discussions, we only considered the gluon-fusion contributions. The quark channel is also important for heavy quarkonium production, especially in pp collisions at relative low energies. In this case, the SSA will depend on the quark Sivers function from the initial state interaction in the color-single model, which however is opposite to the Drell-Yan SSA because of different color-factor, with a relative factor $(-1/2N_c)/C_F$. In the color-octet model, both initial and final state interactions contribute. At one-gluon exchange order, the final state interaction dominate over the initial one, and their total contribution carries an overall factor $-(N_c/2 + 1/2N_c)/C_F$ relative to that in the Drell-Yan process for each quark flavor contribution. It will be interesting to compare the SSA in these two processes, and scan the energy dependence [14, 27].

We thank Xiangdong Ji, Min Liu, Jen-Chiel Peng, Ernst Sichtermann, and Werner Vogelsang for useful discussions and encouragements. We especially thank Jian-Ping Ma and Jianwei Qiu for their valuable comments and discussions. This work was supported in part by the U.S. Department of Energy under grant contract DE-AC02-05CH11231. We are grateful to RIKEN, Brookhaven National Laboratory and the U.S. Department of Energy (contract number DE-AC02-98CH10886) for providing the facilities essential for the completion of this work.

-
- [1] M. Anselmino, A. Efremov and E. Leader, Phys. Rept. **261**, 1 (1995) [Erratum-ibid. **281**, 399 (1997)]; Z. t. Liang and C. Boros, Int. J. Mod. Phys. A **15**, 927 (2000); V. Barone, A. Drago and P. G. Ratcliffe, Phys. Rept. **359**, 1 (2002).
 - [2] J. w. Qiu and G. Sterman, Phys. Rev. Lett. **67**, 2264 (1991); Nucl. Phys. B **378**, 52 (1992).
 - [3] S. J. Brodsky, D. S. Hwang and I. Schmidt, Phys. Lett. B **530**, 99 (2002); Nucl. Phys. B **642**, 344 (2002).
 - [4] J. C. Collins, Phys. Lett. B **536**, 43 (2002).
 - [5] X. Ji and F. Yuan, Phys. Lett. B **543**, 66 (2002); A. V. Belitsky, X. Ji and F. Yuan, Nucl. Phys. B **656**, 165 (2003).
 - [6] D. Boer, P. J. Mulders and F. Pijlman, Nucl. Phys. B **667**, 201 (2003).
 - [7] D. W. Sivers, Phys. Rev. D **43**, 261 (1991).

- [8] D. Boer and W. Vogelsang, Phys. Rev. D **69**, 094025 (2004).
- [9] M. Burkardt, Phys. Rev. D **69**, 091501 (2004).
- [10] M. Anselmino, M. Boglione, U. D'Alesio, E. Leader and F. Murgia, Phys. Rev. D **70**, 074025 (2004).
- [11] M. Anselmino, U. D'Alesio, S. Melis and F. Murgia, Phys. Rev. D **74**, 094011 (2006).
- [12] S. J. Brodsky and S. Gardner, Phys. Lett. B **643**, 22 (2006).
- [13] C. J. Bomhof and P. J. Mulders, JHEP **0702**, 029 (2007).
- [14] M. Liu, talk at SPIN 2006 Symposium, Kyoto, 2006.
- [15] E. L. Berger, J. w. Qiu and Y. l. Wang, Phys. Rev. D **71**, 034007 (2005).
- [16] F. Abe *et al.* [CDF Collaboration], Phys. Rev. Lett. **69**, 3704 (1992).
- [17] G. T. Bodwin, E. Braaten and G. P. Lepage, Phys. Rev. D **51**, 1125 (1995) [Erratum-ibid. D **55**, 5853 (1997)].
- [18] N. Brambilla *et al.* [Quarkonium Working Group], arXiv:hep-ph/0412158.
- [19] G. C. Nayak, J. W. Qiu and G. Sterman, Phys. Lett. B **613**, 45 (2005); Phys. Rev. D **72**, 114012 (2005); Phys. Rev. D **74**, 074007 (2006); arXiv:0707.2973 [hep-ph]; arXiv:0711.3476 [hep-ph].
- [20] Y. J. Zhang, Y. j. Gao and K. T. Chao, Phys. Rev. Lett. **96**, 092001 (2006); Y. J. Zhang and K. T. Chao, Phys. Rev. Lett. **98**, 092003 (2007).
- [21] J. Campbell, F. Maltoni and F. Tramontano, Phys. Rev. Lett. **98**, 252002 (2007); P. Artoisenet, J. P. Lansberg and F. Maltoni, Phys. Lett. B **653**, 60 (2007).
- [22] We thank J.W. Qiu for bringing us attention on this issue.
- [23] Y. Koike, W. Vogelsang and F. Yuan, arXiv:0711.0636 [hep-ph].
- [24] X. Ji, J. W. Qiu, W. Vogelsang and F. Yuan, Phys. Rev. Lett. **97**, 082002 (2006); Phys. Rev. D **73**, 094017 (2006); Phys. Lett. B **638**, 178 (2006).
- [25] X. Ji, J. P. Ma and F. Yuan, JHEP **0507**, 020 (2005).
- [26] J. Collins and J. W. Qiu, Phys. Rev. D **75**, 114014 (2007); J. Collins, arXiv:0708.4410 [hep-ph]; W. Vogelsang and F. Yuan, Phys. Rev. D **76**, 094013 (2007); C. J. Bomhof and P. J. Mulders, arXiv:0709.1390 [hep-ph].
- [27] M. Bai, *et al.*, A Proposal submitted to J-PARC experiment.