

Lawrence Berkeley National Laboratory

Recent Work

Title

USE OF A HIGH ENSITY LEAD GLASS TUBING PROJECTION CHAMBER IN POSITRON EMISSION TOMOGRAPHY AND IN HIGH ENERGY PHYSICS

Permalink

<https://escholarship.org/uc/item/1q15c7d9>

Author

Conti, M.

Publication Date

1985-10-01



Lawrence Berkeley Laboratory

UNIVERSITY OF CALIFORNIA

Physics Division

RECEIVED
LAWRENCE
BERKELEY LABORATORY

14 1986

PHY AND
SECTION

Presented at the ISRP-3, Third International Symposium on Radiation Physics, Ferrara, Italy, September 30-October 4, 1985; and to be published in NIM

USE OF A HIGH DENSITY LEAD GLASS TUBING PROJECTION CHAMBER IN POSITRON EMISSION TOMOGRAPHY AND IN HIGH ENERGY PHYSICS

M. Conti, A. Del Guerra, R. Habel, T. Mulera, V. Perez-Mendez, and G. Schwartz

October 1985

For Reference

Not to be taken from this room



LBL-20491
c.1

DISCLAIMER

This document was prepared as an account of work sponsored by the United States Government. While this document is believed to contain correct information, neither the United States Government nor any agency thereof, nor the Regents of the University of California, nor any of their employees, makes any warranty, express or implied, or assumes any legal responsibility for the accuracy, completeness, or usefulness of any information, apparatus, product, or process disclosed, or represents that its use would not infringe privately owned rights. Reference herein to any specific commercial product, process, or service by its trade name, trademark, manufacturer, or otherwise, does not necessarily constitute or imply its endorsement, recommendation, or favoring by the United States Government or any agency thereof, or the Regents of the University of California. The views and opinions of authors expressed herein do not necessarily state or reflect those of the United States Government or any agency thereof or the Regents of the University of California.

USE OF A HIGH DENSITY LEAD GLASS TUBING PROJECTION CHAMBER
IN POSITRON EMISSION TOMOGRAPHY AND IN HIGH ENERGY PHYSICS *

M. Conti (1), A. Del Guerra(1), R. Habel(2), T. Mulera(3),
V. Perez-Mendez(3), G. Schwartz(1)

- (1) Dipartimento di Fisica, Piazza Torricelli 2,
I-56100 Pisa (Italy).
INFN, Sezione di Pisa, I-56010 S.Piero a Grado (PI)
- (2) ENEA TIB-FIS-TECNLAS, Frascati, I-00044 Frascati (Roma)
- (3) University of California, Lawrence Berkeley Laboratory,
Berkeley, CA 94720, USA

Abstract

We describe the principle of operation of a high density Projection Chamber, in which the converter/radiator and drift field shaping structures are combined in the form of high density ($5-6 \text{ g/cm}^3$) lead glass tubing. The main applications of this type of detector to Medical Physics (Positron Emission Tomography) and High Energy Physics (Electromagnetic Calorimetry) are discussed.

* Work supported in part by the U.S. Department of Energy under Contract DE-AC03-76SF0098, and by M.P.I. (Italy) under Contribution 40% (1983 and 1984), and by C.N.R. (Italy) under Contribution Comitato 02 (1983 and 1984) and Contract 83.02410.11 Comitato 11 (1983).

1. Introduction

The detection of high energy photons in a gas filled medium is limited by the density and the absorption properties of the gas. Honeycomb arrays of lead glass tubing were originally developed at the Lawrence Berkeley Laboratory⁽¹⁾ to enhance the absorption and detection of photons with gas counters.

In Positron Emission Tomography it is necessary to detect the two (511 keV, back to back) annihilation photons in two opposing detectors with high spatial resolution to reconstruct the β^+ emitter radioisotope distribution. A schematic drawing of a MWPC/converter is shown in fig. 1.

The converter is made of lead glass capillaries fused to form honeycomb matrices. In order to have a high efficiency, a high surface to volume ratio is necessary. Therefore, typical dimensions for the tubes are 0.5-2.0 mm inner diameter, 50-200 μ m wall thickness, 1-2 cm drift space. The lead glass matrices are treated in a H_2 reduction process to form a uniform resistive layer⁽²⁾ on the walls of each tube. The Compton or photoelectron produced by the photon interacting within the converter has a finite range which depends on its energy. If it reaches the gas region within the tube, a number of primary ionization electrons are produced. A voltage difference applied between the ends of the tubes drifts these primary electrons along the electric field lines within the tube towards the chamber avalanche region.

Various size capillaries of different diameter and wall thickness have been tried. Our best results have been obtained with a matrix of lead-glass tubing with 0.48 mm inner diameter, 0.06 mm wall thickness (80% PbO , density 6.2 g/cm^3) which gives a measured efficiency of 6.5% for a 1 cm thick converter⁽³⁾. The experimental efficiency measurements for the various converter types agree very well with the Monte Carlo predictions⁽⁴⁾.

We are also investigating the possibility of using this type of converter in High Energy Physics and particularly as

an electromagnetic calorimeter⁽⁵⁾. The proposed drift collection calorimeter (see fig. 2) is a method of achieving fine granularity in gas sampling which minimizes the number of readout channels. The z-coordinate (along the longitudinal direction of the shower) is directly read from the anode wire; the y-coordinate can be obtained by means of delay lines parallel to the anode wires or by charge division method. The third coordinate is given by the drift time of the electrons within the tubes to the anode plane.

2. Construction of the lead-glass matrices

The described PET and HEP applications are both dependent on the use of fused, reduced lead-glass tubes for their success. There are essentially six phases to the construction of the finished project, which are described in detail in reference (6):

i) Cutting of the tubes and their stacking in a mold. The tubes of small diameter (ranging between 0.5 and 1 mm, and wall thickness 50 to 100 μm) used in PET applications were lined up side by side, set flush at one end, ticked with a carborandum blade and the cut lengths were placed in a mold. The bigger diameter tubes (5-10 mm as for calorimetry application) were simply cut to size individually on a lathe. The mold was made of graphite to avoid attachment and to match the expansion coefficient of the glass.

ii) Fusing of the glass The temperature of the oven was slowly raised (over a period of 36 hrs) until the softening point of the glass was reached. A space was left between the mold and its lid to allow for compression of the tubes. A closed lid indicates that the glass has sagged. To avoid a visual inspection of the mold, an electrical sensor has been developed that announces the closure of the lid (see fig. 3), i.e. the end of the fusing process. An annealing and a cooling processes are then performed.

iii) Slicing of the fused glass. The tubes were cut with a diamond saw (400 mm diameter, 2 mm thick with a very fine grit) rotating at high speed (~ 3000 r/min); no polishing of the glass was made.

iv) Cleaning of the glass and HCl treatment. First, the glass was ultrasonic cleaned with deionized water, acetone and again deionized water. Then it was soaked for few minutes in a 0.1 molar HCl solution to produce a protective SiO_2 layer on the surface. This silica layer was then hardened by putting the glass for 8 hrs inside an oven at 140°C .

v) The H_2 reduction treatment. The glass to be treated was placed at the bottom of the oven, which was sealed and evacuated. The temperature of the oven was slowly raised until the desired temperature was reached. The H_2 was then allowed to flow at low rate for a period of some hours.

vi) Production of the conductive layer at the ends of the tubes. A conductive layer was produced by applying silver epoxy with a rubber roller, following a method not unlike that of a printing press. Very thin layer of silver epoxy was transferred to the surface of the glass, to produce a resistance across the surface of 50-200 Ω depending upon the tube diameter.

Two types of glass tubes have been treated: the Nuclear Pacific Hi-D glass, as originally used at Lawrence Berkeley Laboratory⁽¹⁾, and the Schott RS-520 glass. Table I shows the main properties of the latter, that is going to be used for both applications (fig. 4).

TABLE 1

Physical properties of the Schott RS-520 Glass

PbO Composition (by weight)	71%
Density	5.18 g/cm^3
Annealing temperature	423°C
Thermal expansion coefficient	$8.1 \times 10^{-6} / ^\circ\text{C}$

We have investigated the resistivity of this specific glass versus the temperature of the H₂ treatment (fig. 5) and versus the duration of the H₂ treatment at a fixed temperature (fig.6). As a result, we decided to treat the glass in H₂ at 360° for 6 hours which gives a glass resistivity of $\sim 10^{11} \Omega/\square$, adequate for both applications.

3. The applications

3.1 - The HISPET Project

Based on the use of MWPC equipped with this type of converter, a High Spatial resolution Positron Emission Tomograph has been designed. It will consist of six modules arranged so as to form the lateral surface of a hexagonal prism. Each module of HISPET will have two MWPC and two 1 cm thick converter planes (tubing diameters: 0.48 and 0.60 mm ID and OD, respectively), see figure 7. HISPET will be capable of imaging three-dimensional distributions of a positron emitting radioisotope within a typical volume of 3 litres. It will have a volume sensitivity of ~ 100000 c/s per 0.1 μ Ci/ml, a signal to noise (true to accidental coincidences) ratio of 3:1 and an intrinsic spatial resolution of less than 4.5 mm (FWHM)⁽⁷⁾.

A first prototype has been built, which consists of two 50x50 cm² MWPC, each equipped with a 2 cm thick lead glass converter. A fast data taking system based on CAMAC/FASTBUS modules is now under installation.

3.2- The CALTUB Project

We have designed a drift collection calorimeter prototype, with lead glass tubes of 40 cm drift length and a total longitudinal dimension of $\sim 20 X_0$ which fully contains the electromagnetic shower of incident particles of energy up to 10 GeV.

The main characteristics of the prototype are listed in table 2

TABLE 2

Physical characteristics of the calorimeter prototype

Glass used	Schott RS-520
Tubing diameter (ID/OD)	5/7 mm
Radiation length	1.66 cm
Drift length	40 cm
Longitudinal dimension (in radiation lengths)	$\sim 20 X_0$
Actual longitudinal dimension	75 cm
Transverse dimension	30 cm
Total weight	~ 200 kg

The full prototype will be made by assembling several modules of $10 \times 14 \times 40$ cm³ (see fig. 8). A detailed Monte Carlo study⁽⁵⁾ has shown that an energy resolution (σ/E) of $17\%/\sqrt{E}$ is expected with the calorimeter working in proportional sampling mode. The first experimental test have been successfully performed⁽⁸⁾ in the laboratory with radioactive sources and at CERN with m.i.p., and the prototype is now under construction.

References

- (1) - G.K. Lum, M.I. Green, V. Perez-Mendez, and K.C. Tam, "Lead Oxide Glass Tubing Converters for Gamma detection in MWPC", IEEE Trans. Nucl.Sci., NS-27, (1980) 157.
- (2) - K.P. Blodgett, "Surface Conductivity of Lead Silicate Glass after Hydrogen Treatment", Journ. of Amer.Ceram.Soc. ,34, (1951), 14.
- (3) - R. Bellazzini, A. Del Guerra, M.M. Massai, W.R. Nelson, V. Perez-Mendez, and G. Schwartz, "Some Aspects of the Construction of HISPET: a High Spatial resolution Positron Emission Tomograph", IEEE Trans.Nucl.Sci. NS-31, (1984) 645.

- (4) A. Del Guerra, M. Conti, and W.R. Nelson, "Use of EGS for Monte Carlo Calculation in Positron Imaging", INFN/TC-85/1, Proceedings of the "VII International Conference on Positron Annihilation", New Delhi, 6-11 January 1985, World Scientific, Singapore (1985) in press.
- (5) - T. Mulera, V. Perez-Mendez, H. Hirayama, W.R. Nelson, R. Bellazzini, A. Del Guerra, M.M. Massai, "Drift collection calorimetry using a combined radiator and field shaping structure of lead glass tubing", IEEE Trans.Nucl. Sci., NS-31, (1984), 64.
- (6) - G. Schwartz, M. Cinti, M. Conti, A. Del Guerra, M. Di Fino, R. Habel, V. Perez-Mendez, L. Righini, "Construction of Lead Glass tubing matrices for application in Medical Physics and High Energy Physics", INFN, Sezione di Pisa, INFN/TC-85/6, (1985).
- (7) - M. Conti, A. Del Guerra, G.K. Lum, V. Perez-Mendez, R. Porinelli, C. Rizzo, G. Schwartz, "A High Spatial Resolution Positron Emission Tomograph with a 2π solid angle coverage", Proceedings of XIV International Conference on Medical and Biological Engineering and VII International Conference on Medical Physics, Espoo, Finland, 11-16 August 1985, Med.Biol.Eng. and Computing, vol. 23, Supplement, (1985), 1391.
- (8) - A. Del Guerra, R. Bellazzini, M. Conti, M.M. Massai, G. Schwartz, R. Habel, T. Mulera, V. Perez-Mendez, "First Experimental Tests of a Lead Glass Drift Calorimeter", to be presented at the 1985 IEEE NS Symposium, and to be published in the Proceedings, IEEE Trans. on Nucl. Sci. NS-33 (1986).

Figure Captions

1. Schematic drawing of a MWPC equipped with delay line readout and a single layer of lead glass tube converter.
2. Principle of the drift collection calorimeter with lead glass tubes.
3. Graphite mold with its sensors: a $5 \times 5 \text{ cm}^2$ prototype for the calorimeter is inside the mold.
4. Prototypes of lead glass matrices for PET and HEP projects
5. Resistance of a 10 cm (5 mm ID) tube vs. temperature of the H_2 treatment.
6. Resistance of a 10 cm (5 mm ID) tube vs. time of the H_2 treatment.
7. Schematic drawing of HISPET: only three modules are shown.
8. A final module ($10 \times 14 \times 40 \text{ cm}^3$) of the electromagnetic calorimeter, before being polished and H_2 treated.

Fig. 1

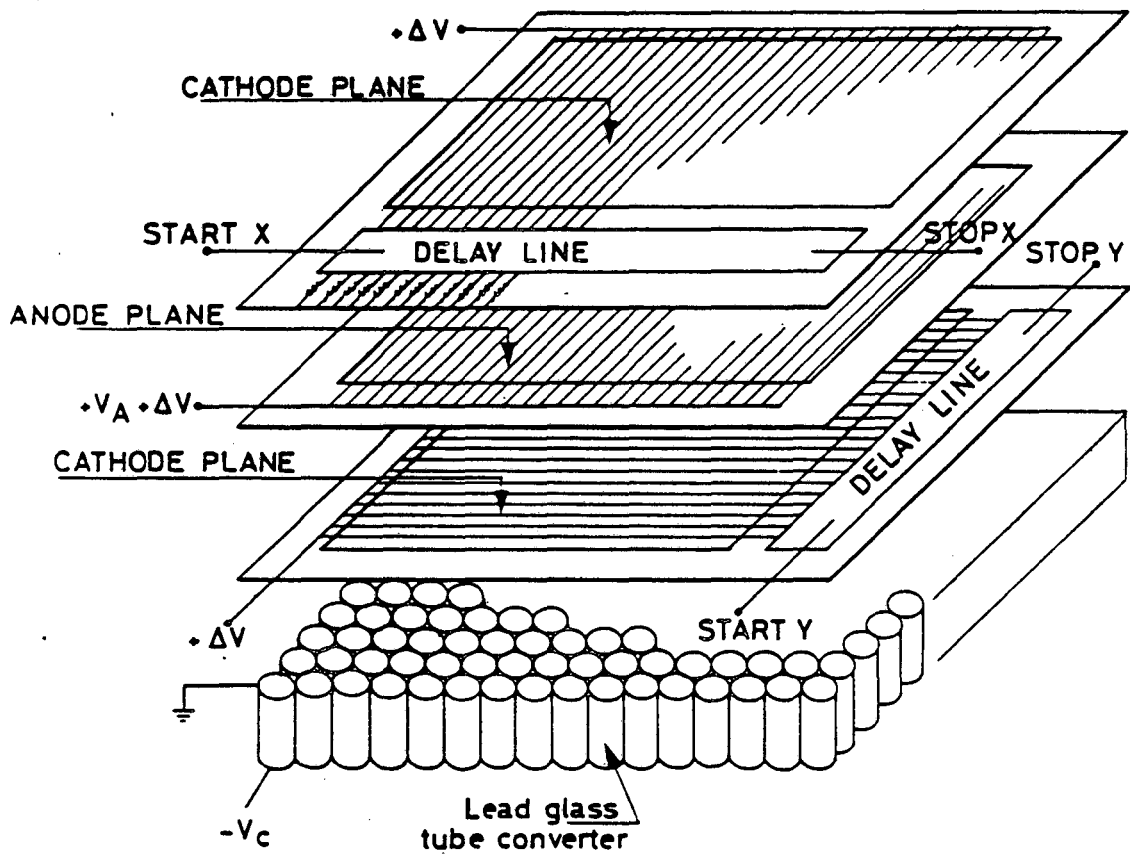
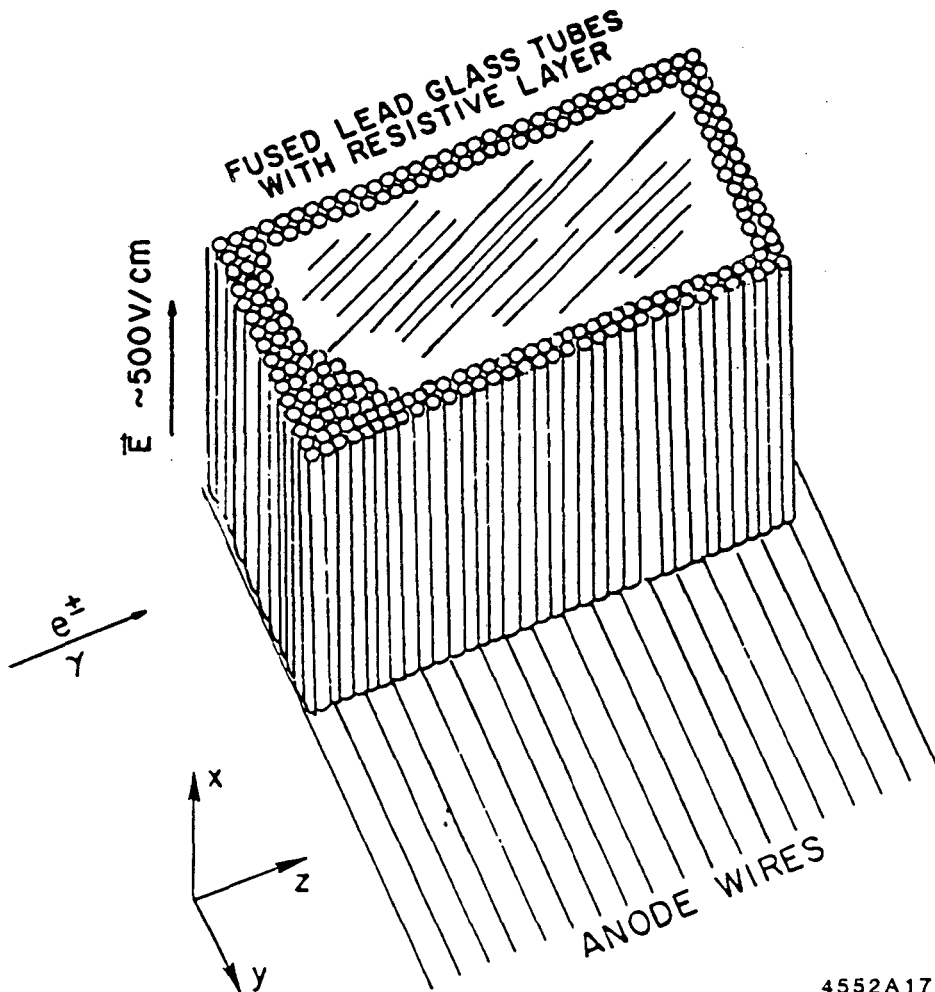


Fig. 2



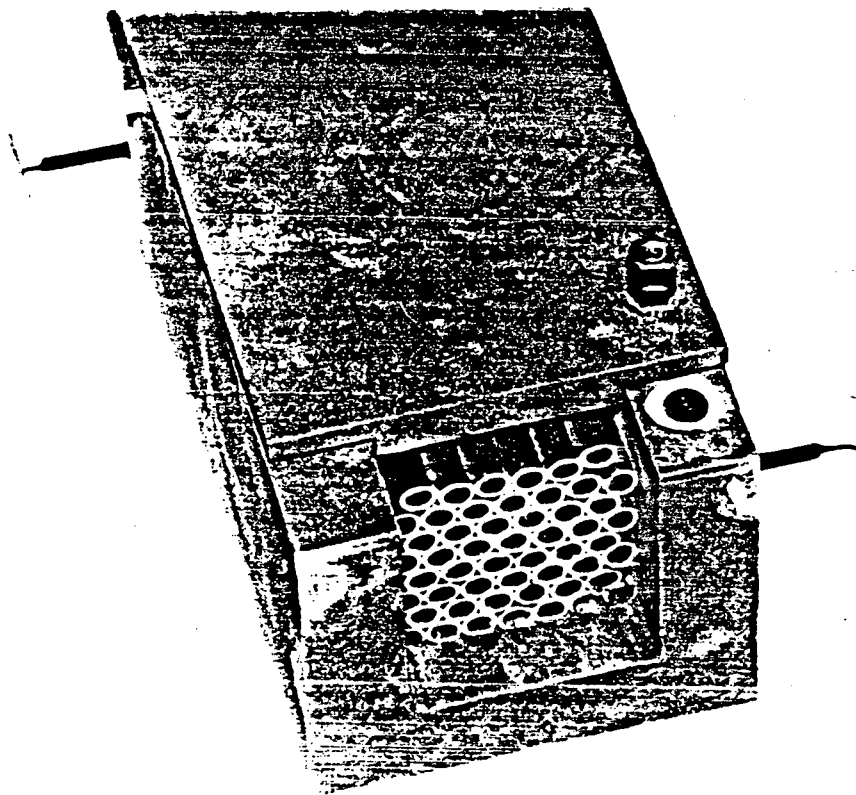


Fig. 3

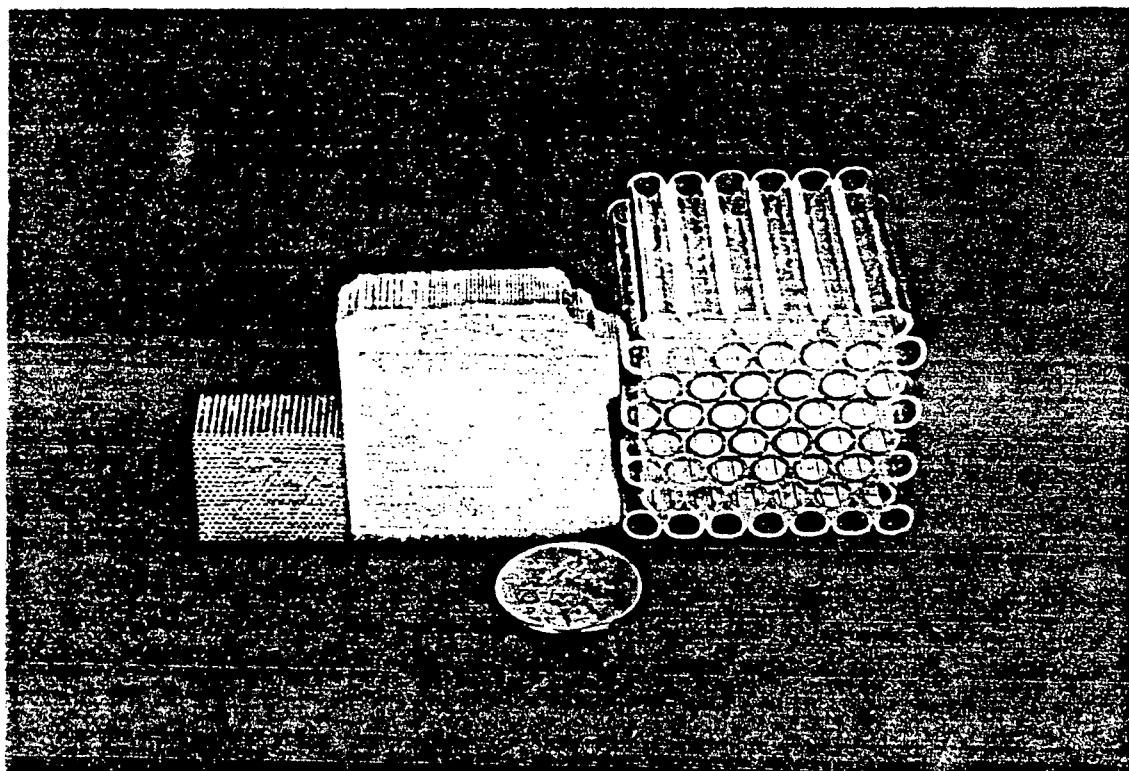


Fig. 4

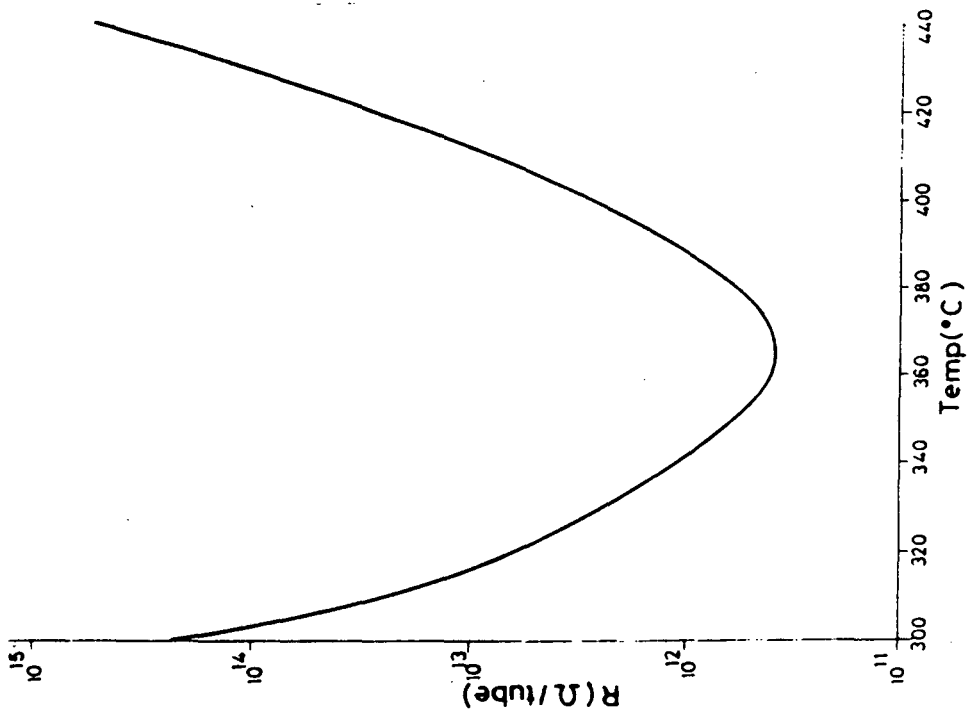


Fig. 5

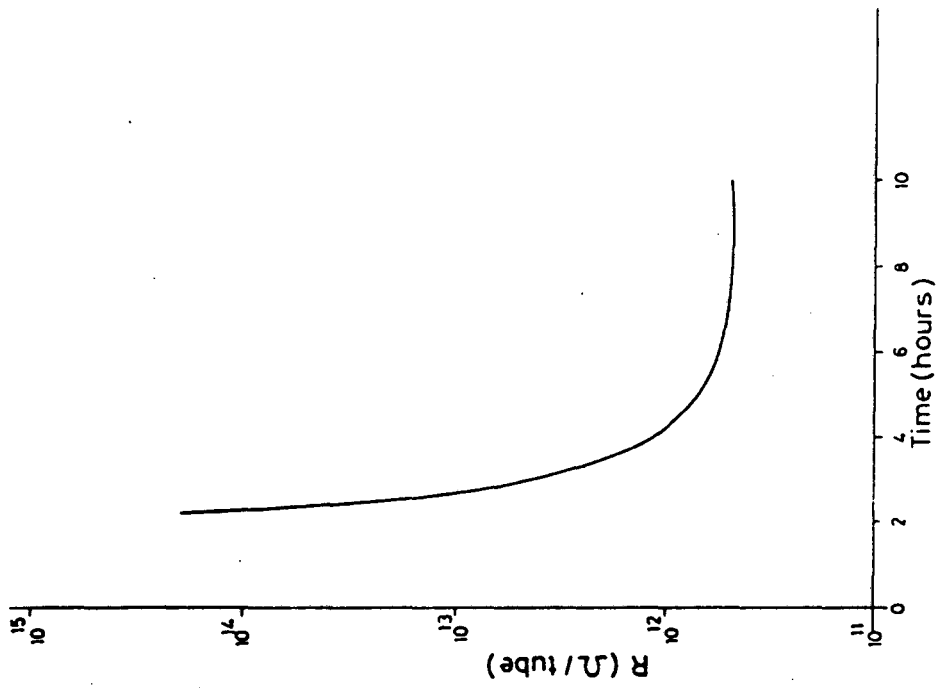
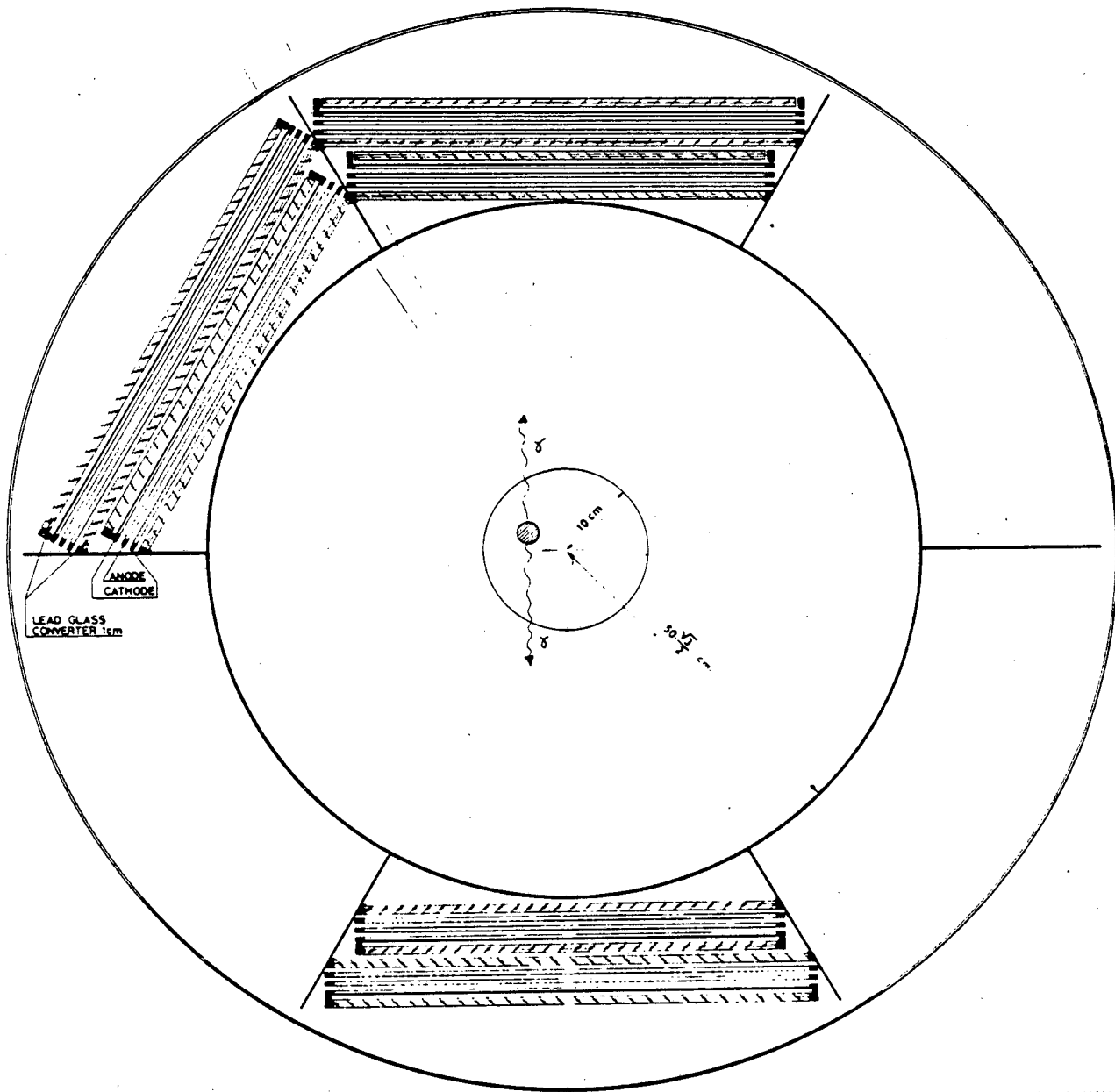


Fig. 6



THE 1970 1111

Fig. 7

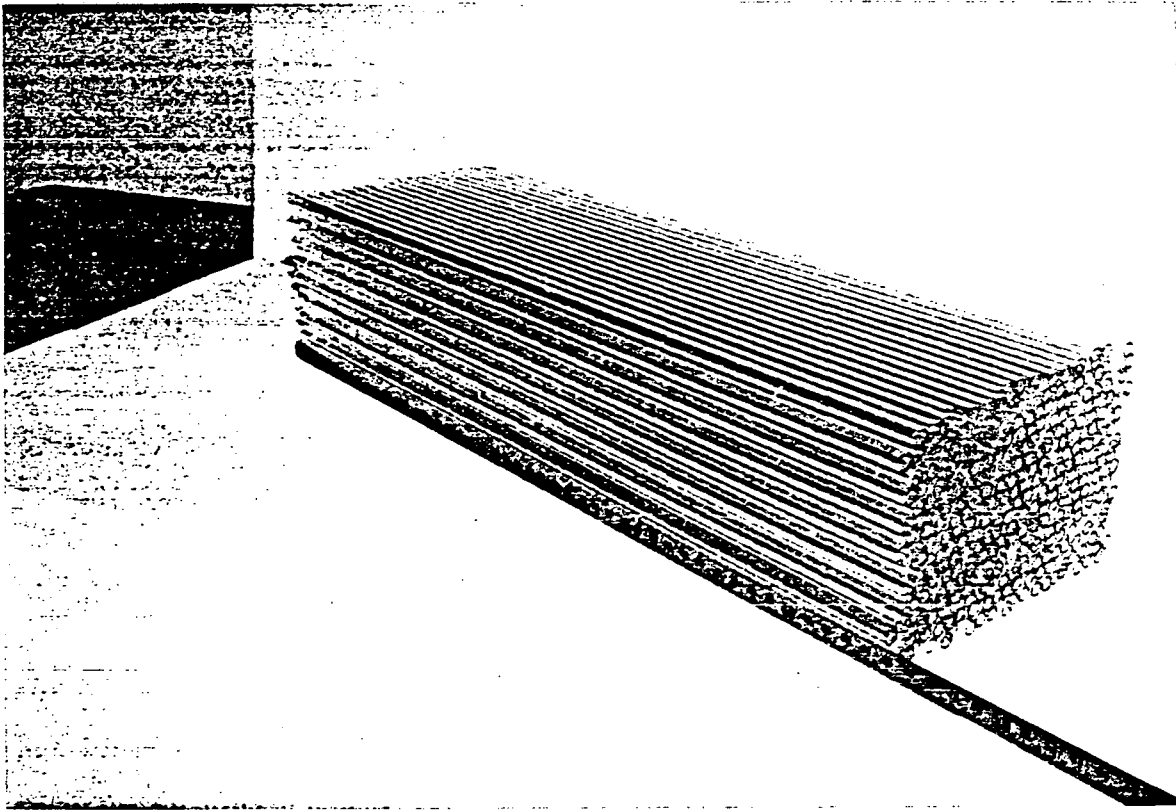


Fig. 8

This report was done with support from the Department of Energy. Any conclusions or opinions expressed in this report represent solely those of the author(s) and not necessarily those of The Regents of the University of California, the Lawrence Berkeley Laboratory or the Department of Energy.

Reference to a company or product name does not imply approval or recommendation of the product by the University of California or the U.S. Department of Energy to the exclusion of others that may be suitable.

*LAWRENCE BERKELEY LABORATORY
TECHNICAL INFORMATION DEPARTMENT
UNIVERSITY OF CALIFORNIA
BERKELEY, CALIFORNIA 94720*