

UCSF

UC San Francisco Previously Published Works

Title

Genome-Wide Meta-analysis Identifies Genetic Variants Associated With Glycemic Response to Sulfonylureas

Permalink

<https://escholarship.org/uc/item/1pj67106>

Journal

Diabetes Care, 44(12)

ISSN

1066-9442

Authors

Dawed, Adem Y
Yee, Sook Wah
Zhou, Kaixin
et al.

Publication Date

2021-12-01

DOI

10.2337/dc21-1152

Peer reviewed



Genome-Wide Meta-analysis Identifies Genetic Variants Associated With Glycemic Response to Sulfonylureas

Diabetes Care 2021;44:2673–2682 | <https://doi.org/10.2337/dc21-1152>

Adem Y. Dawed,¹ Sook Wah Yee,² Kaixin Zhou,¹ Nienke van Leeuwen,³ Yanfei Zhang,⁴ Moneeza K. Siddiqui,¹ Amy Etheridge,⁵ Federico Innocenti,⁵ Fei Xu,⁶ Josephine H. Li,^{7,8} Joline W. Beulens,⁹ Amber A. van der Heijden,^{10,11} Roderick C. Sliker,^{3,10} Yu-Chuan Chang,² Josep M. Mercader,^{7,8} Varinderpal Kaur,^{7,8} John S. Witte,¹² Ming Ta Michael Lee,⁴ Yoichiro Kamatani,¹³ Yukihide Momozawa,¹³ Michiaki Kubo,¹³ Colin N.A. Palmer,¹ Jose C. Florez,^{7,8,14} Monique M. Hedderson,¹⁵ Leen M. 't Hart,^{3,16,17} Kathleen M. Giacomini,^{2,18} and Ewan R. Pearson,¹ for MetGen Plus, for the DIRECT Consortium

OBJECTIVE

Sulfonylureas, the first available drugs for the management of type 2 diabetes, remain widely prescribed today. However, there exists significant variability in glycemic response to treatment. We aimed to establish heritability of sulfonylurea response and identify genetic variants and interacting treatments associated with HbA_{1c} reduction.

RESEARCH DESIGN AND METHODS

As an initiative of the Metformin Genetics Plus Consortium (MetGen Plus) and the Diabetes REsearch on patient stratification (DIRECT) consortium, 5,485 White Europeans with type 2 diabetes treated with sulfonylureas were recruited from six referral centers in Europe and North America. We first estimated heritability using the generalized restricted maximum likelihood approach and then undertook genome-wide association studies of glycemic response to sulfonylureas measured as HbA_{1c} reduction after 12 months of therapy followed by meta-analysis. These results were supported by acute glipizide challenge in humans who were naïve to type 2 diabetes medications, *cis* expression quantitative trait loci (eQTL), and functional validation in cellular models. Finally, we examined for possible drug-drug-gene interactions.

RESULTS

After establishing that sulfonylurea response is heritable (mean ± SEM 37 ± 11%), we identified two independent loci near the *GXYLT1* and *SLCO1B1* genes associated with HbA_{1c} reduction at a genome-wide scale ($P < 5 \times 10^{-8}$). The C allele at rs1234032, near *GXYLT1*, was associated with 0.14% (1.5 mmol/mol), $P = 2.39 \times 10^{-8}$, lower reduction in HbA_{1c}. Similarly, the C allele was associated with higher glucose trough levels ($\beta = 1.61$, $P = 0.005$) in healthy volunteers in the SUGAR-MGH given glipizide ($N = 857$). In 3,029 human whole blood samples, the C allele is a *cis* eQTL for increased expression of *GXYLT1* ($\beta = 0.21$, $P = 2.04 \times 10^{-58}$). The C allele of rs10770791, in an intronic region of *SLCO1B1*, was associated with 0.11% (1.2 mmol/mol) greater reduction in HbA_{1c} ($P = 4.80 \times 10^{-8}$). In 1,183 human liver

¹Population Health and Genomics, School of Medicine, University of Dundee, Dundee, U.K.

²Department of Bioengineering and Therapeutic Sciences, University of California, San Francisco, San Francisco, CA

³Department of Cell and Chemical Biology, Leiden University Medical Center, Leiden, the Netherlands

⁴Genomic Medicine Institute, Geisinger, Danville, PA

⁵Division of Pharmacotherapy and Experimental Therapeutics, Eshelman School of Pharmacy, The University of North Carolina at Chapel Hill, Chapel Hill, NC

⁶Division of Research, Kaiser Permanente Northern California, Oakland, CA

⁷Diabetes Unit and Center for Genomic Medicine, Massachusetts General Hospital, Boston, MA

⁸Programs in Metabolism and Medical and Population Genetics, Broad Institute of Harvard and MIT, Cambridge, MA

⁹Amsterdam UMC, location VUmc, Department of General Practice, Amsterdam Public Health Research Institute, Amsterdam, the Netherlands

¹⁰Amsterdam UMC, location VUmc, Department of Epidemiology and Data Science, Amsterdam Public Health Research Institute, Amsterdam, the Netherlands

¹¹Julius Centre for Health Sciences and Primary Care, University Medical Centre Utrecht, Utrecht, the Netherlands

¹²Department of Epidemiology and Biostatistics, University of California, San Francisco, San Francisco, CA

¹³RIKEN Center for Integrative Medical Sciences, Yokohama, Japan

samples, the C allele at rs10770791 is a *cis* eQTL for reduced *SLCO1B1* expression ($P = 1.61 \times 10^{-7}$), which, together with functional studies in cells expressing *SLCO1B1*, supports a key role for hepatic *SLCO1B1* (encoding OATP1B1) in regulation of sulfonylurea transport. Further, a significant interaction between statin use and *SLCO1B1* genotype was observed ($P = 0.001$). In statin nonusers, C allele homozygotes at rs10770791 had a large absolute reduction in HbA_{1c} ($0.48 \pm 0.12\%$ [5.2 ± 1.26 mmol/mol]), equivalent to that associated with initiation of a dipeptidyl peptidase 4 inhibitor.

CONCLUSIONS

We have identified clinically important genetic effects at genome-wide levels of significance, and important drug-drug-gene interactions, which include commonly prescribed statins. With increasing availability of genetic data embedded in clinical records these findings will be important in prescribing glucose-lowering drugs.

Sulfonylureas are potent glucose-lowering drugs that reduce HbA_{1c} by an average of 1.5% (18 mmol/mol) (1). Despite an increasing trend to use more modern, expensive treatments, sulfonylureas remain commonly prescribed in the U.K., making up 27% of new prescriptions, second only to metformin (2). Due to their very low cost, they are extensively used in low- and middle-income countries. However, considerable variation exists in response to sulfonylureas, with 10–20% of people with diabetes not responding at initiation of sulfonylurea therapy and 30–35% failing to respond to monotherapy after 5 years (3,4). It is likely that a combination of genetic and nongenetic modifying factors underlies the clinical variability of glycemic response to sulfonylureas. While many clinical risk factors such as baseline HbA_{1c}, sex, duration of diabetes, and dose are associated with glycemic response to sulfonylureas (5–7), modulatory genetic factors remain largely unexplored, with the exception of a few proof of concept studies with use of a candidate gene approach (8–12).

Glycemic response to metformin is heritable, with 34% of the variance in response explainable by common genetic variants (13–15). There have been no similar estimates for sulfonylurea response, and to date, no genome-wide association studies (GWAS) of glycemic response to sulfonylurea treatment have been reported,

so the genetic contribution to how patients respond to sulfonylureas and clinical implication of this genetic variation have not been systematically studied. As an initiative of the Metformin Genetics Plus Consortium (MetGen Plus) and the Diabetes REsearchCh on patient stratification (DIRECT) consortium, we report here the first genome-wide meta-analysis of glycemic response to sulfonylureas, measured as HbA_{1c} reduction after 12 months of therapy. Based on these findings we then explore the impact of interacting drugs and identify clinically important genotype-dependent statin-sulfonylurea interactions for this important class of diabetes therapies.

RESEARCH DESIGN AND METHODS

List of abbreviations used throughout this article and their corresponding explanations are shown in Supplementary Table 1.

Study Design and Participants

We established an international consortium allowing recruitment of 5,485 unrelated individuals of European ancestry from six referral centers in Europe and North America as part of MetGen Plus and the DIRECT consortium (Supplementary Table 2). Included participants had a clinical diagnosis of type 2 diabetes and were treated with sulfonylureas as monotherapy or as an add-on to metformin. This study was approved by respective

research ethics review boards, and participants provided written informed consent.

Sample Ascertainment

Clinical, prescription, and biochemical data were retrieved from the electronic medical record systems. Participants with type 2 diabetes aged >35 years at diagnosis who used sulfonylureas with no history of insulin use were identified. They were stably treated with sulfonylureas for at least 6 months with no other glucose-lowering drug started or stopped within the study period. The baseline HbA_{1c} was between 7% (53.0 mmol/mol) and 14% (129.5 mmol/mol) at sulfonylurea initiation.

Measurement of Glycemic Response and Definition of Variables

Participants' glycemic response to sulfonylurea was modeled as the quantitative phenotype of HbA_{1c} reduction between baseline HbA_{1c} and treatment HbA_{1c} while the patients were maintained on stable treatment. Baseline HbA_{1c} was defined as the HbA_{1c} measure closest to sulfonylurea initiation and within 6 months before and 7 days after this date. The treatment HbA_{1c} was the HbA_{1c} measure closest to 12 months after initiation of sulfonylureas (between 6 and 15 months).

In all the studies, covariates were selected based on previous reports and univariate association between the

¹⁴Department of Medicine, Harvard Medical School, Boston, MA

¹⁵Department of Epidemiology and Biostatistics, University of California, San Francisco, San Francisco, CA

¹⁶Department of Biomedical Data Sciences, Section Molecular Epidemiology, Leiden University Medical Center, Leiden, the Netherlands

¹⁷Department of General Practice Medicine, Amsterdam Public Health Research Institute, Amsterdam University Medical Center, Vrije

Universiteit Amsterdam, Amsterdam, the Netherlands

¹⁸Institute for Human Genetics, University of California, San Francisco, San Francisco, CA

Corresponding author: Ewan R. Pearson, e.pearson@dundee.ac.uk

Received 31 May 2021 and accepted 20 August 2021

This article contains supplementary material online at <https://doi.org/10.2337/figshare.16593023>.

A.Y.D. and S.W.Y. are joint first authors.

K.M.G. and E.R.P. are joint senior authors.

© 2021 by the American Diabetes Association. Readers may use this article as long as the work is properly cited, the use is educational and not for profit, and the work is not altered. More information is available at <https://www.diabetesjournals.org/content/license>.

outcome variable (HbA_{1c} reduction) and explanatory variables. The best fit linear regression model was determined using stepwise backward elimination. Accordingly, baseline HbA_{1c}, sex, age at diagnosis, baseline BMI, average daily dose, time between baseline HbA_{1c} and treatment HbA_{1c}, and drug group (sulfonylurea monotherapy or sulfonylurea added to metformin) were considered in the final model as available in each cohort (Supplementary Table 3). Average daily dose was calculated as the mean daily dose of prescriptions filled during the study period (mean of percentage of each sulfonylurea divided by maximum prescribable according to the British National Formulary). Baseline weight was the measure nearest to the sulfonylurea start date (index date) and within 180 days on either side of the index date. Each study was adjusted for the top *n* principal components (PCs) to account for 80–90% of the variation in population structure.

The final response model was as follows: HbA_{1c} reduction ~ baseline HbA_{1c} + PCs + study-specific covariates.

Genome-Wide Array Genotyping, Quality Control, and Imputation

For each respective cohort genome-wide genotyping was performed on a variety of arrays as illustrated in Supplementary Table 3. Genotyping and quality control procedures for the Genetics of Diabetes Audit and Research in Tayside Scotland (GoDARTS), Hoorn Diabetes Care System (DCS), and Pharmacogenomics of Metformin (PMET) cohorts have previously been described (13,15,16). Genotyping data for each platform were individually cleaned by each study center. Standard postgenotyping quality control procedures were applied to each data set (Supplementary Fig. 1). Monomorphic single nucleotide polymorphisms (SNPs) with minor allele frequency (MAF) <1%, call rate <98%, or Hardy-Weinberg equilibrium <10⁻⁶ were removed. Samples with genotyping calls <98% or heterozygosity >3 SDs from the mean or correlated with another sample (identity by descent >0.125) were filtered out. All genetic variants were mapped to and reported with Genome Reference Consortium Human genome build 37 (GRCh37). Each data set was then imputed to the 1000 Genomes CEU reference panel (phase 1, version 3) with IMPUTE software (17), except PMET2 and Geisinger

where imputation was performed with the HRC.r1-1 EUR reference genome (GRCh37 build) using the Michigan server. Postimputation, SNPs with poor imputation quality (INFO < 0.6), monomorphic variants, or MAF <5% were excluded (Supplementary Fig. 1).

Genome-Wide Association Analysis

Following imputation, GWAS was conducted for each respective cohort under an additive genetic model for assessment of the role of common variants (MAF ≥5%) in glycemic response to sulfonylureas. Each SNP was tested for association with quantitative measure of sulfonylurea-related HbA_{1c} reduction with SNPTTEST v2.536 (18) using multiple linear regression correcting for baseline HbA_{1c}, genotypic PCs, and other study-specific variables (Supplementary Table 3). Genome-wide association analyses were carried out separately by respective study centers. Prior to meta-analysis, we performed post-GWAS harmonization and quality control of GWAS results from each cohort to track possible errors in the study-specific analyses. We used the standard protocol accompanied by the EasyQC R package (19). Specifically, we removed SNPs with MAF <5%, low imputation quality (<0.6), large absolute values of β-coefficients and SEs (≥10), low call rate (<0.98), and deviations from Hardy-Weinberg equilibrium ($P < 10^{-6}$). Meta-analysis was then performed with use of an inverse variance-weighted fixed-effects model, implemented in GWAMA v2.1.34 (20). Post-meta-analysis, SNPs with MAF <5%, available in fewer than six studies, with large absolute values of β-coefficients and SEs (≥10) were excluded (Supplementary Fig. 1). Heterogeneity was assessed with the *I*² metric from the complete study-level meta-analysis. Between-study heterogeneity was tested with the Cochran *Q* statistic and considered significant at $P < 0.1$. We used the commonly accepted threshold of 5.0×10^{-8} for joint *P* values to determine statistical significance. Nominal significance was considered to be $P < 0.05$. The CMplot package (21) in R was used to generate Manhattan and quantile-quantile plots. Regional plots around genome-wide or suggestive genes were visualized using LocusZoom (22). The final meta-analysis included 5,385,635 common autosomal

SNPs from 5,485 independent individuals of European ancestors treated with sulfonylureas ($\lambda = 1.008$) (Supplementary Fig. 2).

Common Variant Heritability

We used the generalized restricted maximum likelihood approach under the LDAK assumptions using SumHer v5.1 (23) to estimate how much of the variance in HbA_{1c} reduction after sulfonylurea treatment could be attributed to common genetic variants (SNP-based heritability [*h*² SNP]). This method is a valid approach for estimating heritability in studies in which acquisition of data of family members with the same diagnosis who have received the same medication and were assessed with use of the same treatment outcome is not feasible. In addition, SumHer uses GWAS summary without requiring individual-level data (23). Therefore, we estimated the SNP heritability using summary statistics from the meta-GWAS. To avoid the impact of extreme linkage disequilibrium (LD) regions and disproportionately large effect size SNPs on heritability estimates, we exclude SNPs within the MHC (chromosome 6: 25–34 Mb) and SNPs that individually explain >1% of phenotypic variation and SNPs in LD with these (within 1 cM).

Conditional Analysis

Given rs10770791 is in partial LD with previously established nonsynonymous variants, rs4149056 (*5; V174A, *D'* = 1; *r*² = 0.17) and rs2306283 (*1B; N130D, *D'* = 0.98; *r*² = 0.63), we performed conditional analysis by including these SNPs in the model together. This analysis was carried out with individual-level data from the GoDARTS and PMET cohorts (65% of the total population) and baseline HbA_{1c}, PCs, and other study-specific covariates.

Biochemical Response to Glipizide

To test whether meta-GWAS-identified genetic variants are associated with trough glucose levels, we performed a lookup using data from the Study to Understand the Genetics of the Acute Response to Metformin and Glipizide in Humans (SUGAR-MGH). SUGAR-MGH enrolled 1,000 participants at risk for anti-diabetes therapy in the future or individuals with lifestyle-controlled type 2

diabetes naïve to treatment. Participants received a single dose of 5 mg glipizide followed by measurement of glucose and insulin levels at 30, 60, 90, 120, 180, and 240 min. This was used to construct phenotypes of acute glipizide response. The association of rs1234032 and rs10770791 with glipizide response was assessed with linear regression with baseline glucose, age, sex, and the first 10 PCs as a covariate (see Supplementary Notes).

Drug-Drug-Gene Interaction Analysis

Given we have identified a genetic variant in the *SLCO1B1* (a gene encoding hepatic transporter of statins) associated with glycemic response to sulfonylureas, we checked for interaction between *SLCO1B1* rs10770791 and statin use in a drug-drug-gene interaction model using linear regression, with HbA_{1c} reduction as the dependent variable. This analysis was performed with use of individual-level data from the GoDARTS and PMET cohorts where we have access to prescription data.

Statin-treated case subjects were recipients of sulfonylureas who were also prescribed statins for at least the 3 months prior to the measurement of treatment HbA_{1c}. Statin untreated control subjects were those recipients of sulfonylureas who did not receive a statin prescription for at least 1 year prior to measurement of the treatment HbA_{1c}.

Expression Quantitative Trait Locus Lookups

Expression quantitative trait loci (eQTL) analysis seeks to identify genetic variants that affect the expression of one or more genes: a gene-SNP pair for which the expression of the gene is associated with the allelic configuration of the SNP is referred to as an eQTL. eQTL lookups were performed in human liver and whole blood samples for rs10770791 and rs1234032, respectively. Additional lookups were performed using publicly available data from the Genotype-Tissue Expression (GTEx) consortium.

The human liver eQTL lookups were carried out using data from a previous study performed by the group of F.I. (24). In brief, this eQTL study was performed with 1,183 liver samples, combined from four data sets (24). We looked up the top associated SNP, rs10770791, from this study, as it is in

the *SLCO1B1* and *SLCO1B3* region, which are genes that are abundantly expressed in the liver.

The human whole blood eQTL lookup was performed with use of data from the DIRECT consortium in a total of 3,029 subjects at high risk of developing type 2 diabetes or with recently diagnosed type 2 diabetes (25). A detailed explanation of the eQTL analysis has previously been published (26), and summary statistics are available (DOI: 10.5281/zenodo.4475681).

Cell Culture and In Vitro Transport and Inhibition Studies

Human embryonic kidney (HEK)-293 Flp-In cells stably expressing empty vector (EV), OATP1B1, and OATP1B3, were used for performance of in vitro transport and inhibition studies to establish the potency of inhibitors as IC₅₀ (i.e., concentration of inhibitor required to inhibit 50% uptake of a particular OATP1B1 and OATP1B3 substrate). Stably transfected HEK-293 Flp-In cells were maintained in DMEM H-21 supplemented with 10% FBS, 100 units/mL penicillin, 100 units/mL streptomycin, and 500 µg/mL geneticin. For transport studies, 150,000 cells/well were seeded the day before the experiment on a poly-*d*-lysine-coated 48-well plate. After 16–24 h, media were removed and cells were incubated at 37°C for 5–10 min in 0.5 mL Hanks' balanced salt solution (HBSS) (Thermo Fisher Scientific). Uptake studies were initiated after removal of 0.3 mL of the HBSS above and addition of 0.15 mL HBSS containing a trace amount of ³H-glyburide (NET1024250UC; PerkinElmer), ³H-glipizide (MT1855; Moravek), or ³H-esterone sulfate (as positive control, NET203250UC; PerkinElmer). After 5 min, radioactive substrates were removed and washed twice with 1 mL ice-cold HBSS. For inhibition studies, the same methods above were used, where ³H-glyburide was used as substrate and various concentrations of atorvastatin (Cayman Chemical) or simvastatin (Cayman Chemical) were added together with ³H-glyburide. For comparison of the uptake of ³H-glyburide and ³H-glipizide in OATP1B1 reference and OATP1B1-174A (*5)-expressing cells, studies were performed using stable and transiently transfected cells. The stable and transient experiments were carried out with HEK-293 Flp-In cell lines expressing EV, OATP1B1 reference, and OATP1B1-174A

(*5), previously established by our group (27). These cell lines were used to determine the uptake of ³H-glyburide, ³H-glipizide, and 3H-esterone sulfate (as positive control). In brief, each well was transfected with 200 ng DNA vector with 0.4 µL Lipofectamine LTX transfection reagent (Thermo Fisher Scientific) in a 48-well poly-*d*-lysine-coated plate. Uptake studies were then performed after 48 h with the methods described above and in triplicate wells.

Data and Resource Availability

Summary-level data that underlie the results reported in this article are available upon request to the corresponding author.

RESULTS

Glycemic Response to Sulfonylureas Is Heritable

The SNP heritability estimate (h^2) for a model-adjusted absolute reduction in HbA_{1c} was mean ± SEM 37 ± 11%, comparable with our previous estimate for metformin ($h^2 = 34%$) (14). This suggests that approximately one-third of the total variance of glycemic response to sulfonylureas is due to the additive effects of common variants.

GWAS Identifies Two Variants Associated With Altered Glycemic Response to Sulfonylureas

Meta-GWAS identified two genome-wide significant variants, rs1234032 and rs10770791, both on chromosome 12 (Fig. 1, Supplementary Fig. 2, and Table 1). The most significant association was obtained for rs1234032, with a mean ± SEM $-0.14 \pm 0.03\%$ (-1.5 ± 0.3 mmol/mol) difference in HbA_{1c} reduction per C allele; $P = 2.39 \times 10^{-8}$. No statistical evidence for difference in effect size between studies was observed (P for heterogeneity [P_{het}] = 0.55) (Fig. 3). We then examined data from a healthy volunteer population (SUGAR-MGH, $N = 857$) given a single dose of glipizide (28) and found that the C allele of rs1234032 was associated with higher postdose glucose trough levels ($\beta = 1.61$, $P = 0.005$), and thus worse response, consistent with our GWAS findings. rs1234032 is an intergenic SNP, near *GXYLT1* (Fig. 2 and Fig. 3), a gene that encodes a xylose transferase. rs1234032 is a *cis* eQTL to *GXYLT1* in the

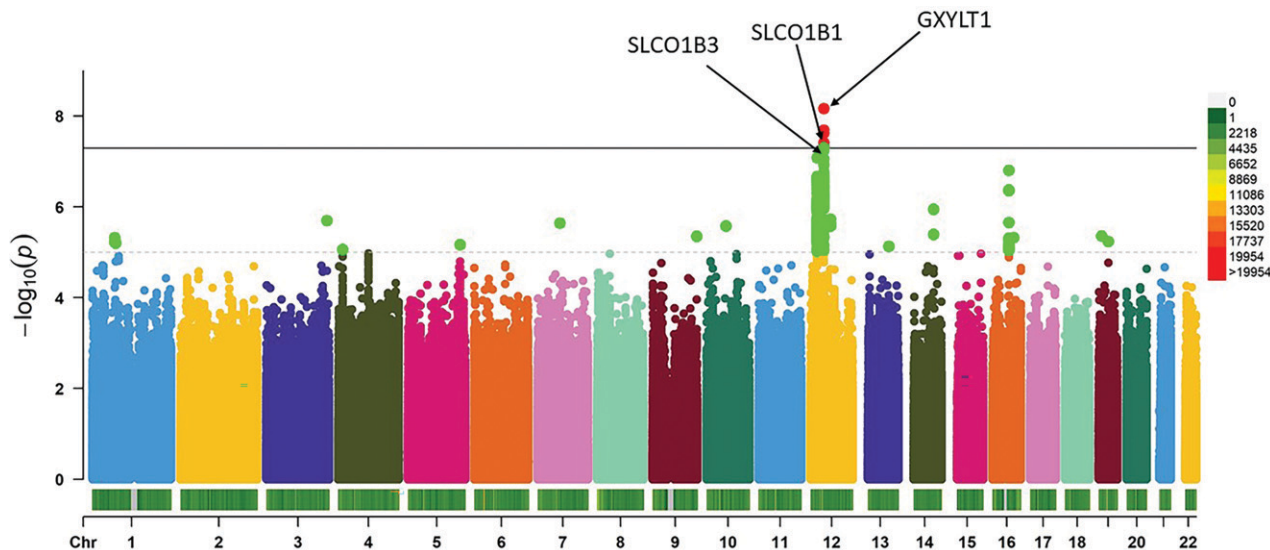


Figure 1—Manhattan plot of genome-wide results from single marker association with glycemic response to sulfonylureas with use of an additive genetic model in a meta-analysis consisting of 5,485 individuals with type 2 diabetes on sulfonylureas.

whole blood with use of 3,029 samples from the DIRECT consortium, with the C allele being associated with increased expression ($\beta = 0.21$, $P = 2.04 \times 10^{-58}$). rs1234032 also showed a significant association with *GXYLT1* expression in multiple tissues including adipose subcutaneous ($P = 8.1 \times 10^{-5}$), artery tibial

($P = 2.8 \times 10^{-9}$), artery aorta ($P = 3.4 \times 10^{-6}$), nerve tibial ($P = 3.6 \times 10^{-6}$) and whole blood ($P = 0.01$) from the GTEx consortium (29), with the C allele associated with increased expression. These significant eQTL analyses could be due to strong linkage of rs1234032 ($D' = 1$ and $R^2 = 0.95$) to rs7958582, which is

within the *cis*-regulatory elements (<https://screen.wenglab.org/>). The C allele of rs1234032 is also in LD with the A allele of rs7964383 ($D' = 0.98$, $r^2 = 0.41$), which is highly associated with increased whole blood gene expression ($P = 1.7 \times 10^{-4}$) (29) and circulating protein levels of *GXYLT1* (30). Both rs7958582 (β per G

Table 1—Results for index variants in the top 15 independent loci ($P < 1.0 \times 10^{-5}$) associated with glycemic response

rsID	Chr	Position	Nearest gene	EA	NEA	EAF	β §	SE	<i>P</i>	<i>N</i> studies	<i>P</i> _{het}	<i>N</i> samples
rs1234032	12	42354629	<i>GXYLT1</i>	C	T	0.252	-0.141429	0.025	2.39×10^{-8}	7	0.55	4,810
rs10770791	12	21338406	<i>SLCO1B1</i>	C	T	0.498	0.107475	0.020	4.80×10^{-8}	8	0.93	5,476
rs2217693	12	21107376	<i>SLCO1B3–SLCO1B7</i>	G	A	0.925	-0.188639	0.037	8.40×10^{-8}	8	0.34	5,479
rs8062936	16	52475969	<i>TOX3</i>	G	A	0.371	0.122292	0.023	1.57×10^{-7}	7	0.39	4,810
rs7965567	12	21161025	<i>SLCO1B3–SLCO1B7</i>	T	G	0.051	0.251377	0.051	7.81×10^{-7}	6	0.57	4,591
rs7703659	5	83222316	LOC107986386	A	G	0.132	-0.14596	0.030	1.15×10^{-6}	8	0.30	5,478
rs1900362	13	85059600	<i>LINC00333</i>	G	A	0.339	-0.102358	0.021	1.26×10^{-6}	8	0.69	5,475
rs11816402	10	61491043	<i>MRLN</i>	T	C	0.082	-0.217113	0.046	2.66×10^{-6}	7	0.39	4,810
rs11667346	19	8817909	<i>NFILZ</i>	G	A	0.099	-0.194814	0.042	4.39×10^{-6}	6	0.37	4,591
rs59012839	9	138419280	<i>LCN1</i>	G	A	0.097	-0.216643	0.047	4.51×10^{-6}	6	0.56	4,210
rs12928694	16	10067543	<i>GRIN2A</i>	A	C	0.159	-0.123792	0.027	5.52×10^{-6}	8	0.56	5,475
rs58013952	19	29917652	<i>LOC284395</i>	T	C	0.115	0.160896	0.036	5.78×10^{-6}	7	0.56	4,810
rs75553467	1	74014130	LINC02238	C	G	0.059	-0.233071	0.052	6.31×10^{-6}	6	0.48	4,591
rs73239453	4	14122932	<i>LINC01085</i>	T	C	0.106	0.160255	0.036	8.69×10^{-6}	7	0.93	4,810
rs10250448	7	33489223	<i>BBS9</i>	G	A	0.10	0.15	0.03	8.94×10^{-6}	8	0.78	5,479

Data shown are for index variants identified in a GWAS meta-analysis of sulfonylurea users with type 2 diabetes. Chr, chromosome; EA, effective allele; EAF, effective allele frequency; NEA, non-effective allele; rsID, reference SNP cluster identifier. §Negative β value implies that the effective allele is associated with reduced response to sulfonylureas.

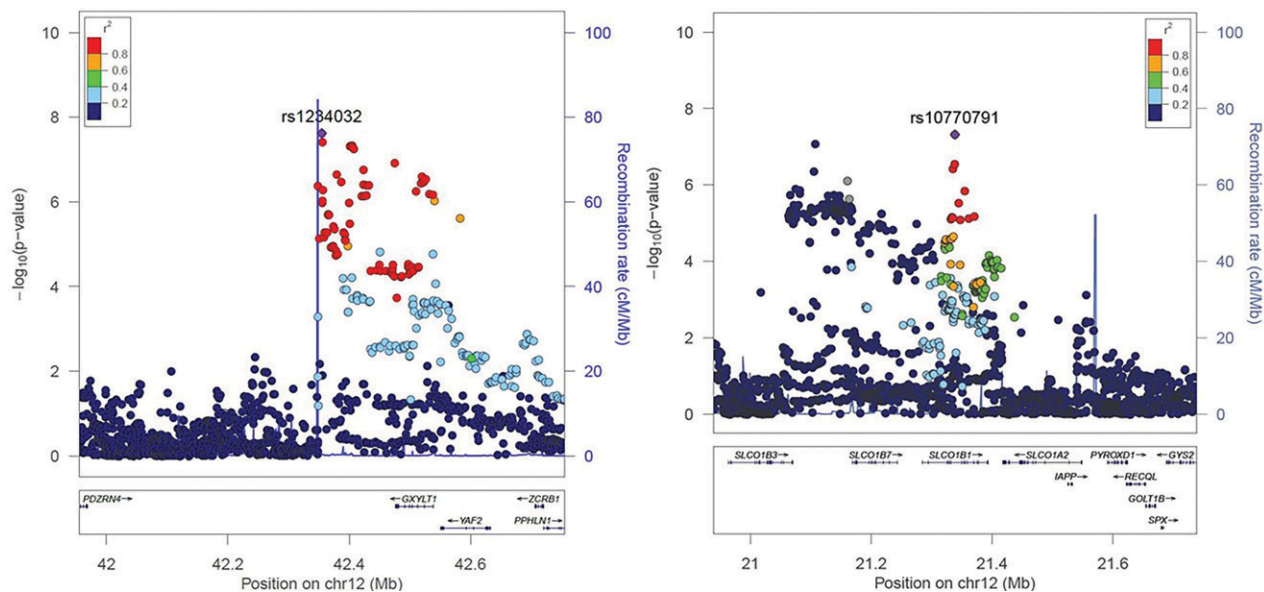


Figure 2—Regional association plots around genome-wide significant SNPs, rs1234032 (left) and rs10770791 (right) locus at chromosome 12, for the meta-GWAS. The purple diamonds in both plots indicate the top SNPs in the locus.

allele = -0.10 , $P = 1.84 \times 10^{-06}$) and rs7964383 (β per A allele = -0.06 , $P = 0.003$) were also nominally associated with glycemic response to sulfonylureas.

The second variant, rs10770791, is located in an intron of *SLCO1B1* (Fig. 2), and each copy of the C allele (frequency 49.8%) was associated with a mean \pm SEM $0.11 \pm 0.02\%$ (1.2 ± 0.2 mmol/mol) greater HbA_{1c} reduction; $P = 4.80 \times 10^{-8}$. Stratified analyses showed a consistent direction of association across

cohorts with similar effect sizes with no significant heterogeneity ($P_{\text{het}} = 0.94$) (Fig. 3). rs10770791 genotype was not significantly associated with sulfonylurea dose modification ($P = 0.16$) or drug group (the likelihood of being on mono- or dual therapy) ($P = 0.29$). No significant association between rs10770791 and postglipizide trough glucose concentration was observed in healthy volunteers given glipizide in SUGAR-MGH ($\beta = -0.37$, $P = 0.46$).

rs10770791 Is an eQTL for *SLCO1B1* That Encodes OATP1B1, a Transporter of Sulfonylureas

Focusing on the *SLCO1B1* locus, we performed locus-wide meta-analysis to identify the candidate causal gene (Fig. 2). We also examined two established common nonsynonymous variants in *SLCO1B1*, rs4149056 (*5; V174A) and rs2306283 (*1B; N130D) (30). rs4149056 ($D' = 1$; $r^2 = 0.17$) and rs2306283 ($D' = 0.98$; $r^2 = 0.63$) were in partial LD with rs10770791, with

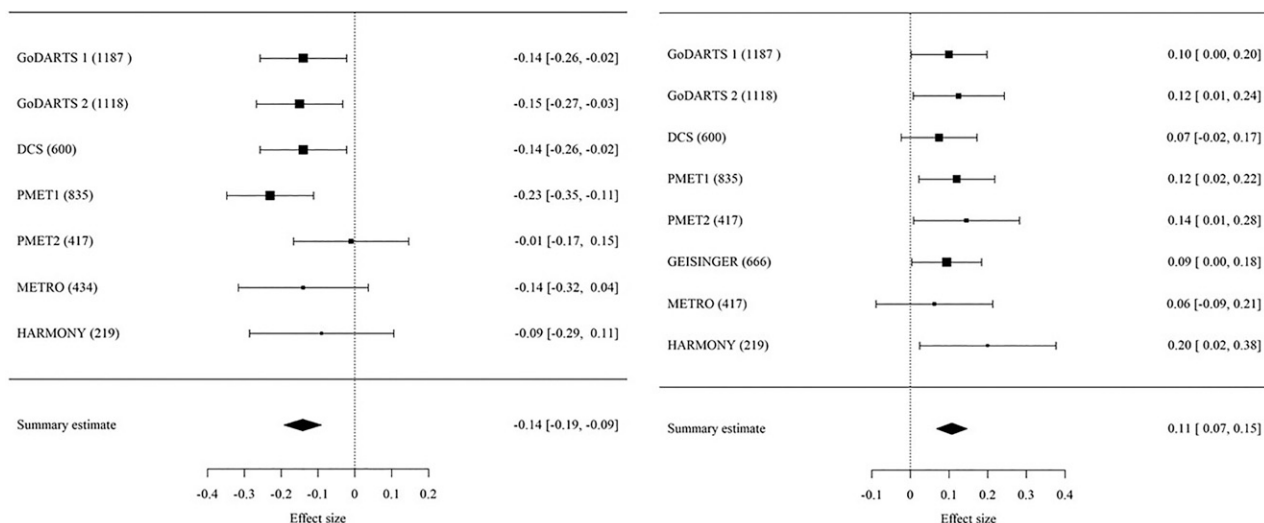


Figure 3—Forest plot of the meta-analysis of the association of HbA_{1c} reduction with rs1234032 (left) and rs10770791 (right) variants after sulfonylurea treatment. Information on the various cohorts can be found in Supplementary Data. The numbers in parentheses indicate the number of individuals in each of the cohorts. The last column shows the effect size [95% CI].

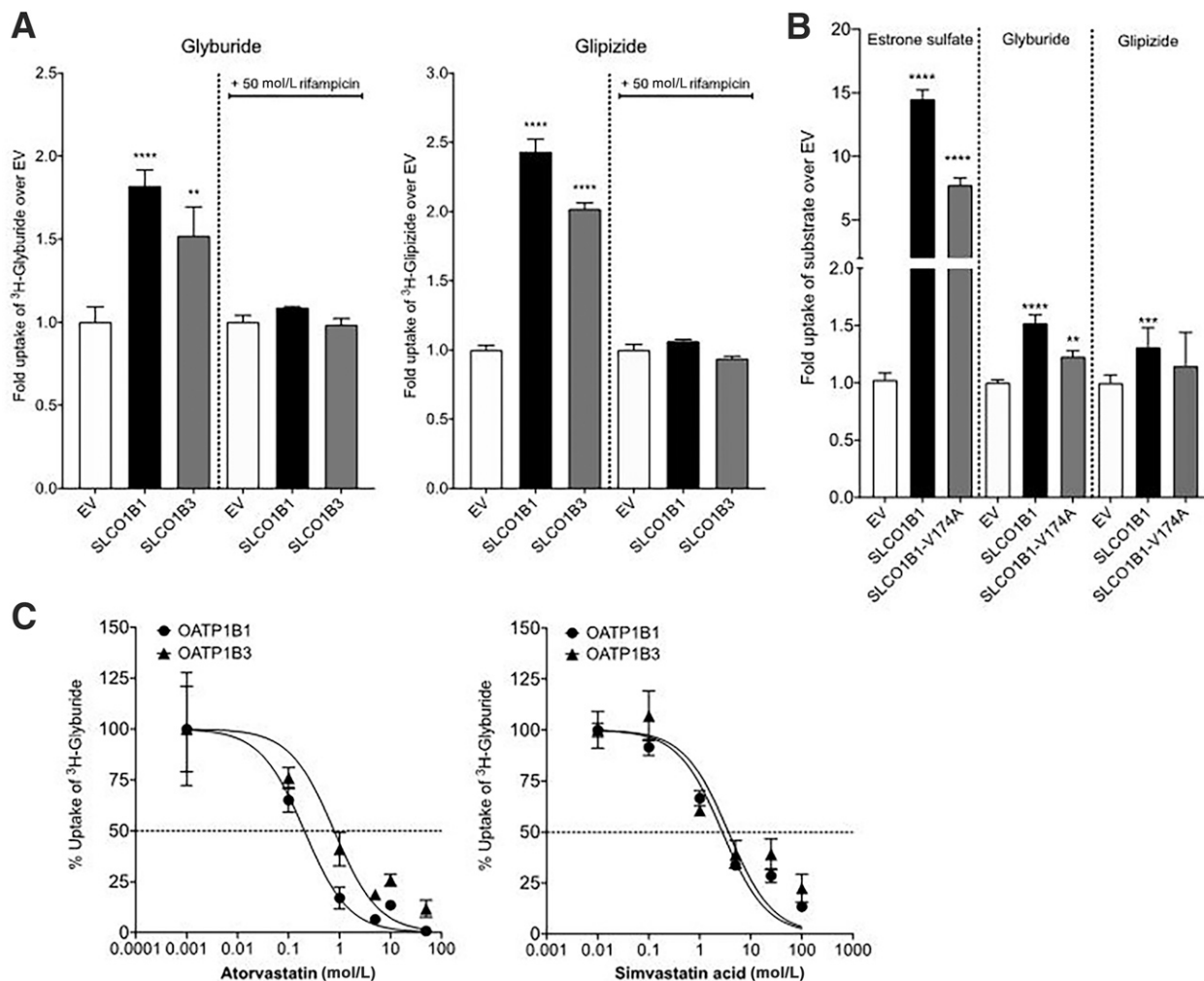


Figure 4—Glyburide and glipizide uptake in HEK-293 Flp-In cells recombinantly expressing SLC01B1 or SLC01B3. **A:** Uptake of [3H]-glyburide and [3H]-glipizide in HEK-293 Flp-In stable cells expressing EV, SLC01B1, or SLC01B3. Rifampicin (50 μ mol/L) is used as a canonical inhibitor of SLC01B1 and SLC01B3. *P* values, representing significance from EV, were determined by one-way ANOVA followed by Dunnett two-tailed test. *****P* < 0.0001; ****P* < 0.001; ***P* < 0.01; **P* < 0.05. Bars represent the mean \pm SEM uptake from three wells. Values shown are from a representative experiment of at least three independent studies. **B:** Uptake of [3H]-estrone sulfate, [3H]-glyburide, and [3H]-glipizide in HEK-293 Flp-In stable cells expressing EV, SLC01B1, and SLC01B1 V174A. Estrone sulfate is a canonical substrate of SLC01B1 and is used as a positive control in this assay. *P* values, for significance from EV, were determined by one-way ANOVA followed by Dunnett two-tailed test. *****P* < 0.0001; ****P* < 0.001; ***P* < 0.01; **P* < 0.05. Bars represent the mean \pm SEM uptake from four wells from a representative experiment. The uptake values for [3H]-glyburide and [3H]-glipizide shown are from at least four independent studies with three or four replicates per study. **C:** Inhibition of [3H]-glyburide uptake by atorvastatin and simvastatin acid in HEK-293 Flp-In stable cells expressing SLC01B1 and SLC01B3. Each point represents the mean \pm SEM uptake from four wells. Values shown are from a representative experiment of two independent studies.

both rs4149056 (mean \pm SEM β = 0.10 \pm 0.03% [1.1 \pm 0.3 mmol/mol], *P* = 2.72 \times 10⁻⁴) and rs2306283 (β = 0.08 \pm 0.02% [0.9 \pm 0.2 mmol/mol], *P* = 4.32 \times 10⁻⁵) nominally associated with sulfonylurea response. However, in a conditional analysis where we have individual-level data from the GoDARTS and PMET cohorts, *n* = 3,557 (65% of the total population), only rs10770791 remained strongly associated with sulfonylurea response (β = 0.15 \pm 0.05% [2 \pm 0.4 mmol/mol], *P* = 1.4 \times 10⁻³), with rs4149056 (β = 0.03 \pm 0.05% [0.3 \pm 0.4 mmol/mol], *P* = 0.58) and rs2306283

(β = 0.06 \pm 0.05% [0.7 \pm 0.4 mmol/mol], *P* = 0.19) not significant.

We then undertook eQTL lookups of *SLCO1B1* expression in 1,183 liver samples of European ancestry (24) and demonstrated that the C-allele of rs10770791 was associated with decreased *SLCO1B1* expression (β = -5.24, *P* = 1.61 \times 10⁻⁷) and, marginally, with decreased *SLCO1B3* expression (β = -2.46, *P* = 0.01). We found directionally consistent but nonsignificant associations in the 208 liver samples examined in the GTEx project (β = -0.06, *P* = 0.13 for *SLCO1B1*).

Glyburide is a substrate of both OATP1B1 and OATP1B3 (31–35), whereas there are conflicting reports about glipizide, which has been shown to be a substrate of OATP1B3 but not OATP1B1 (31). We therefore undertook functional studies on sulfonylurea transport and observed that both glyburide and glipizide were substrates of OATP1B1 and OATP1B3 in HEK-293 cells recombinantly expressing the transporters (Fig. 4A). Further, we observed that OATP1B1 Ala174 (c.521C) had a significantly lower uptake of glyburide (*P* < 0.002) and a trend

toward a lower uptake of glipizide ($P = 0.06$) compared with OATP1B1 Val174 (c.521T) (Fig. 4B).

Statins Inhibit Sulfonylurea Transport via OATP1B1; Genetically Reduced OATP1B1 Transport Has a Large Effect in Nonstatin Users

Given the high frequency with which hypercholesterolemia and diabetes co-occur, statins are often taken concomitantly with sulfonylureas. OATP1B1, expressed on the basolateral membrane of human hepatocytes (36), contributes to the hepatic uptake of sulfonylureas and statins from portal blood (37). We therefore sought to examine whether the initiation of statins in patients receiving sulfonylurea is associated with glycemic response in a drug-drug-gene interaction model with a sample of 3,566 adults, where we have access to individual-level data. On the basis of retrospective data from the GoDARTS and PMET cohorts, 2,096 (59%) sulfonylurea users were coprescribed statins and 1,470 (41%) were not. In a multiple linear regression model adjusted for baseline HbA_{1c}, statin cotreatment was associated with greater HbA_{1c} reduction on initiation of sulfonylurea, but only with adjustment for rs10770791 (mean \pm SEM $0.22 \pm 0.09\%$ [2 ± 1.0 mmol/mol], $P = 0.02$). These results highlight a significant interaction between statin use and *SLCO1B1* genotype (rs10770791) ($P = 0.001$) (Supplementary Table 4). In support of these results, we show that atorvastatin acid and simvastatin acid inhibited OATP1B1- and OATP1B3-mediated uptake of glyburide, with IC₅₀ values ranging between 0.2 and 2.9 μ mol/L (Supplementary Table 5), consistent with previous studies showing that these two statins inhibit OATP1B1-mediated uptake of estradiol-17 β -glucuronide (38).

We then performed stratified analysis to see whether statin use modifies the association between rs10770791 and sulfonylurea-related HbA_{1c} reduction using a similar model. We observed that the effect of rs10770791 was abolished in sulfonylurea users prescribed statins (mean \pm SEM $\beta = 0.053 \pm 0.03\%$ [0.6 ± 0.3 mmol/mol]), $P = 0.11$). However, among users of sulfonylureas without statins, we found a pronounced HbA_{1c} reduction associated with the C allele of rs10770791 ($\beta = 0.23 \pm 0.049\%$ [2.4 ± 0.6 mmol/mol]), $P = 3.1 \times 10^{-6}$)

(Supplementary Table 6). C allele homozygotes at rs10770791 had a $0.48 \pm 0.12\%$ (5.2 ± 1.26 mmol/mol) greater absolute HbA_{1c} reduction than T allele homozygotes.

CONCLUSIONS

We report the first meta-GWAS on glycemic response to sulfonylureas and establish that this trait is heritable with a 37% heritability estimate. We have identified two novel loci at chromosome 12 and confirmed a potential involvement of the *GXYLT1* and *SLCO1B1* genes in glycemic response to sulfonylureas. We report large clinical effects of variants in *SLCO1B1*, which encodes a transporter for sulfonylureas in the liver where it is metabolized, and report interaction with coprescription of statins.

The SNP rs1234032 is an eQTL for *GXYLT1* in multiple tissues including whole blood. *GXYLT1* adds the first xylose to *O*-glucose-modified residues in NOTCH1 (31), which is a major determinant of pancreatic islet cell mass and insulin secretion and is a risk factor for diabetes (32). The C allele at rs1234032 was associated with increased expression of *GXYLT1*. Transgenic overexpression of human *GXYLT1* was previously shown to impair Notch signaling (39). Notch signaling pathway is known to play an important role in regulating development of pancreas and also shown to be expressed in adult pancreas (40). In a recent study, Eom et al. (40) compared glucose levels, insulin secretion, and islet and β -cell masses in Notch1 antisense transgenic (NAS) and control mice after intraperitoneal glucose tolerance test. Higher glucose levels, lower insulin secretion, and decreased total islet and β -cell masses were shown in NAS in comparison with control mice. In line with this, we have shown increased trough glucose concentration with the C allele in healthy volunteers who were naive to type 2 diabetes medications who received a glipizide challenge and, hence, worse response.

The C allele at rs10770791 was significantly associated with reduced expression of *SLCO1B1* mRNA in the liver and worse glycemic response to sulfonylureas. *SLCO1B1* encodes the organic anion-transporting polypeptide, OATP1B1, which facilitates the hepatic uptake of clinically relevant drugs such as statins. Gliclazide, glipizide, glyburide

(glibenclamide), glimepiride, tolazamide, and tolbutamide were prescribed for the subjects in this study. Approximately 90% of the prescriptions in GoDARTS were for gliclazide, and glipizide was the main sulfonylurea in the PMET cohorts. While gliclazide and glimepiride are substrates of OATP1B1 (31,34), glyburide has been shown to be a substrate of both OATP1B1 and OATP1B3 (31,34–36,41,42). However, there are conflicting reports about glipizide, which has been shown to be a substrate of OATP1B3 but not OATP1B1 (36). Here we show that both glyburide and glipizide were substrates of OATP1B1 and OATP1B3. Further, we observed a significantly lower uptake of glyburide ($P < 0.002$) and a trend toward a lower uptake of glipizide ($P = 0.06$) for OATP1B1 Ala174 (c.521C) compared with OATP1B1 Val174 (c.521T). Examination of other known missense variants (rs60140950 [p.Gly256Ala], rs11045681 [p.Tyr311Ser], and rs11045819 [p.Pro155Thr]) in the *SLCO1B3* and *SLCO1B3–SLCO1B7* regions that are in partial LD with rs10770791 showed no significant association. Taken together these results suggest that the pharmacogenetic mechanism for the effect of rs10770791 on sulfonylurea response is primarily a result of altered hepatic expression of *SLCO1B1* and, to a lesser extent, *SLCO1B3*. Partial LD of rs10770791 with various missense variants may contribute to its effect on sulfonylurea response; however, conditional analysis demonstrated association of rs10770791 with glycemic response independent of the missense variants. The reduced *SLCO1B1* expression likely results in less OATP1B1-mediated transport of sulfonylurea into the liver and potentially higher plasma concentrations available at the site of action (pancreas).

There is a high prevalence of multimorbidity and subsequent polypharmacy in type 2 diabetes, highlighting a need to consider drug-drug as well as drug-drug-gene interactions in prediction models of glycemic response to sulfonylureas. Given that statins are often taken concomitantly with sulfonylureas, with both being substrates of OATP1B1, we examined for a possible drug-drug-gene interaction and showed a significant interaction between statin use and *SLCO1B1* genotype (rs10770791) ($P = 0.001$). Stratified analysis by statin use showed differential effects of rs10770791 in statin users and nonusers. While the association between rs10770791 and glycemic response to sulfonylureas was

abolished in statin users, it was more pronounced in statin nonusers. In those not treated with statins nearly one-quarter of the population who carry two C alleles at rs10770791 had a 0.48% (5.2 mmol/mol) greater HbA_{1c} reduction compared with T allele homozygotes. These large effects are the equivalent of those in starting a dipeptidyl peptidase 4 inhibitor (43) and equated to a dose difference of 28 mg gliclazide. Our findings suggest that the previous reported observational association between statins and hypoglycemia in sulfonylurea users (44) may be explained by interactions at *SLCO1B1*, depending on the underlying genotype. The findings are consistent with previous studies in healthy volunteers and rodents demonstrating that atorvastatin administration is associated with increased levels of glimepiride (45) and glyburide (46), respectively. Given that there is a strong recommendation to use statins by recent guidelines, statin use is increasing among people with diabetes (47). Therefore, integrating comedications with genetic data could improve optimization of polypharmacy regimens.

This study has some limitations. First, the modest sample size does not have sufficient power to detect the contribution of rare and low-frequency variants in heritability estimation and/or glycemic response to sulfonylureas. However, this is the first GWAS and largest pharmacogenomic study on sulfonylureas response so far. Second, this study was conducted in Whites of European descent, and therefore the results may not generalize to other populations. Third, even though we have performed several validation studies, direct replication of the findings in an independent study is warranted. Finally, further studies need to be done to elucidate the biological mechanism of the identified associations, especially for *GXYLT1*.

In conclusion, we have established that common genetic variants contribute to the variation in glycemic response to sulfonylureas, with an estimated heritability of 37%. This result shows that a moderate proportion of the variance in glycemic response is genetic, with an important role for common genetic variation in glycemic response to sulfonylureas. We report that a variant that modulates gene expression and circulating *GXYLT1* reduces response to sulfonylureas. We have also revealed a robust association bet-

ween rs10770791, a *cis* eQTL for *SLCO1B1* expression in the liver, and glycemic response to sulfonylureas, with reduced *SLCO1B1* expression associating with increased response to sulfonylureas. Our results suggest the potential of rs10770791 to be a biomarker for stratified medicine in diabetes. In addition, we have highlighted significant drug-drug-gene interactions for sulfonylurea, statin use, and rs10770791, with clinically actionable genetic effects with pronounced differences in HbA_{1c} reduction in a subgroup of patients treated with sulfonylureas without statins. Over the next 5 years we will see an ever-increasing availability of genotype or sequence data embedded in the medical records; given replication, the *SLCO1B1*-statin interaction could be clinically actionable and will need to be taken into account at the point of prescribing sulfonylureas.

Acknowledgments. The authors acknowledge the following individuals for their contributions in providing information required for the studies: Dana Fraser from Parexel, who completed imputation for the Metformin Response (METRO) cohort; Dilrini Ranatunga from Kaiser Permanente Northern California Division of Research, for providing the phenotype and genotype data for the PMET1 cohort and phenotype data for PMET2 cohort; Sara R. Rashkin Center for Applied Bioinformatics, St. Jude Children's Research Hospital, Memphis, TN, for providing advice related to computational coding and analyses required for the PMET cohorts; and Xujia Zhou, University of California, San Francisco, CA, for experimental assistance required for this study. The authors also acknowledge Jennifer L. Aponte, Genomic Medicine, Parexel; Margaret G. Ehm, Target Sciences, GlaxoSmithKline; and Dawn M. Waterworth, Target Sciences, GlaxoSmithKline for their contribution to data analysis and revising the manuscript. The authors also acknowledge clinicalstudydatarequest.com for access to the HARMONY data. Finally, the authors thank all study participants.

Funding and Duality of Interest. The work leading to this publication has received support from the Innovative Medicines Initiative Joint Undertaking under grant agreement no. 115317 (DIRECT), resources of which are composed of financial contribution from the European Union's Seventh Framework Programme (FP7/2007-2013) and European Federation of Pharmaceutical Industries (EFPIA) companies' in kind contribution. Funding was in part from the National Institutes of Health (NIH), R01-GM117163, to J.C.F., M.M.H., and K.M.G. E.R.P. holds a Wellcome New Investigator Award (102820/Z/13/Z). Funding for SUGAR-MGH was provided by National Institute of Diabetes and Digestive and Kidney Diseases (NIDDK), NIH, R01-DK088214. J.H.L. is sup-

ported by NIDDK, NIH, T32-DK007028. J.C.F. is supported by NIDDK, NIH, K24-DK110550. Geisinger MyCode type 2 diabetes project was supported by the Geisinger Health Plan Quality Pilot Fund (Principal Investigator: M.T.M.L.). E.R.P. has received honoraria for speaking from Lilly and Sanofi. J.C.F. has received honoraria for speaking at scientific conferences from Novo and for consulting from Goldfinch Bio. No other potential conflicts of interest relevant to this article were reported.

Author Contributions. A.Y.D., S.W.Y., L.M.†H., K.M.G., and E.R.P. contributed to conception and design of the study. A.Y.D., S.W.Y., N.V.L., Y.Z., M.K.S., A.E., F.I., F.X., J.H.L., R.C.S., and Y.-C.C. contributed to data analysis. S.W.Y., A.E., F.I., J.M.M., V.K., J.S.W., M.T.M.L., Y.K., Y.M., M.K., C.N.A.P., J.C.F., M.M.H., and L.M.†H. contributed to data collection and genotyping. A.Y.D., S.W.Y., K.M.G., and E.R.P. contributed to manuscript writing, with contributions from all authors on the final version. A.Y.D., S.W.Y., K.M.G., and E.R.P. are the guarantors of this work and, as such, had full access to all the data in the study and take responsibility for the integrity of the data and the accuracy of the data analysis.

References

- Hirst JA, Farmer AJ, Dyar A, Lung TW, Stevens RJ. Estimating the effect of sulfonylurea on HbA_{1c} in diabetes: a systematic review and meta-analysis. *Diabetologia* 2013;56:973–984
- Curtis HJ, Dennis JM, Shields BM, et al. Time trends and geographical variation in prescribing of drugs for diabetes in England from 1998 to 2017. *Diabetes Obes Metab* 2018;20:2159–2168
- Kahn SE, Haffner SM, Heise MA, et al.; ADOPT Study Group. Glycemic durability of rosiglitazone, metformin, or glyburide monotherapy. *N Engl J Med* 2006;355:2427–2443
- Pearson ER. Pharmacogenetics and future strategies in treating hyperglycaemia in diabetes. *Front Biosci* 2009;14:4348–4362
- Martono DP, Lub R, Lambers Heerspink HJ, Hak E, Wilffert B, Denig P. Predictors of response in initial users of metformin and sulphonylurea derivatives: a systematic review. *Diabet Med* 2015;32:853–864
- Pearson ER, Donnelly LA, Kimber C, et al. Variation in TCF7L2 influences therapeutic response to sulfonylureas: a GoDARTs study. *Diabetes* 2007;56:2178–2182
- Dennis JM, Henley WE, Weedon MN, et al.; MASTERMIND Consortium. Sex and BMI alter the benefits and risks of sulfonylureas and thiazolidinediones in type 2 diabetes: a framework for evaluating stratification using routine clinical and individual trial data. *Diabetes Care* 2018;41:1844–1853
- Becker ML, Visser LE, Trienekens PH, Hofman A, van Schaik RH, Stricker BH. Cytochrome P450 2C9 *2 and *3 polymorphisms and the dose and effect of sulfonylurea in type II diabetes mellitus. *Clin Pharmacol Ther* 2008;83:288–292
- Suzuki K, Yanagawa T, Shibasaki T, Kaniwa N, Hasegawa R, Tohkin M. Effect of CYP2C9 genetic polymorphisms on the efficacy and pharmacokinetics of glimepiride in subjects with type 2 diabetes. *Diabetes Res Clin Pract* 2006;72:148–154
- Zhou K, Donnelly L, Burch L, et al. Loss-of-function CYP2C9 variants improve therapeutic

- response to sulfonylureas in type 2 diabetes: a Go-DARTS study. *Clin Pharmacol Ther* 2010; 87:52–56
11. Chen L, Li JH, Kaur V, et al. The presence of two reduced function variants in CYP2C9 influences the acute response to glipizide. *Diabet Med* 2020;37:2124–2130
12. Srinivasan S, Kaur V, Chamarthi B, et al. *TCF7L2* genetic variation augments incretin resistance and influences response to a sulfonylurea and metformin: the Study to Understand the Genetics of the Acute Response to Metformin and Glipizide in Humans (SUGAR-MGH). *Diabetes Care* 2018;41:554–561
13. Zhou K, Bellenguez C, Spencer CC, et al.; GoDARTS and UKPDS Diabetes Pharmacogenetics Study Group; Wellcome Trust Case Control Consortium 2; MAGIC investigators. Common variants near *ATM* are associated with glycemic response to metformin in type 2 diabetes. *Nat Genet* 2011;43:117–120
14. Zhou K, Donnelly L, Yang J, et al.; Wellcome Trust Case Control Consortium 2. Heritability of variation in glycaemic response to metformin: a genome-wide complex trait analysis. *Lancet Diabetes Endocrinol* 2014;2:481–487
15. Zhou K, Yee SW, Seiser EL, et al.; MetGen Investigators; DPP Investigators; ACCORD Investigators. Variation in the glucose transporter gene *SLC2A2* is associated with glycemic response to metformin. *Nat Genet* 2016;48:1055–1059
16. Morris AP, Voight BF, Teslovich TM, et al.; Wellcome Trust Case Control Consortium; Meta-Analyses of Glucose and Insulin-related traits Consortium (MAGIC) Investigators; Genetic Investigation of Anthropometric Traits (GIANT) Consortium; Asian Genetic Epidemiology Network–Type 2 Diabetes (AGEN-T2D) Consortium; South Asian Type 2 Diabetes (SAT2D) Consortium; Diabetes Genetics Replication And Meta-analysis (DIAGRAM) Consortium. Large-scale association analysis provides insights into the genetic architecture and pathophysiology of type 2 diabetes. *Nat Genet* 2012;44:981–990
17. Howie BN, Donnelly P, Marchini J. A flexible and accurate genotype imputation method for the next generation of genome-wide association studies. *PLoS Genet* 2009;5:e1000529
18. Marchini J, Howie B, Myers S, McVean G, Donnelly P. A new multipoint method for genome-wide association studies by imputation of genotypes. *Nat Genet* 2007;39:906–913
19. Winkler TW, Day FR, Croteau-Chonka DC, et al.; Genetic Investigation of Anthropometric Traits (GIANT) Consortium. Quality control and conduct of genome-wide association meta-analyses. *Nat Protoc* 2014;9:1192–1212
20. Mägi R, Morris AP. GWAMA: software for genome-wide association meta-analysis. *BMC Bioinformatics* 2010;11:288
21. Yin L, Zhang H, Tang Z, et al. rMVP: a memory-efficient, visualization-enhanced, and parallel-accelerated tool for genome-wide association study. 20 August 2020 [preprint]. bioRxiv:2020.08.20.258491
22. Pruim RJ, Welch RP, Sanna S, et al. LocusZoom: regional visualization of genome-wide association scan results. *Bioinformatics* 2010;26:2336–2337
23. Speed D, Balding DJ. SumHer better estimates the SNP heritability of complex traits from summary statistics. *Nat Genet* 2019; 51:277–284
24. Etheridge AS, Gallins PJ, Jima D, et al. A new liver expression quantitative trait locus map from 1,183 individuals provides evidence for novel expression quantitative trait loci of drug response, metabolic, and sex-biased phenotypes. *Clin Pharmacol Ther* 2020;107:1383–1393
25. Koivula RW, Forgie IM, Kurbasic A, et al.; IMI DIRECT Consortium. Discovery of biomarkers for glycaemic deterioration before and after the onset of type 2 diabetes: descriptive characteristics of the epidemiological studies within the IMI DIRECT Consortium. *Diabetologia* 2019; 62:1601–1615
26. Viñuela A, Brown AA, Fernandez J, et al. Genetic analysis of blood molecular phenotypes reveals regulatory networks affecting complex traits: a DIRECT study. medRxiv. 2021:2021.03.26.21254347.
27. Yee SW, Giacomini MM, Hsueh CH, et al. Metabolomic and genome-wide association studies reveal potential endogenous biomarkers for OATP1B1. *Clin Pharmacol Ther* 2016;100: 524–536
28. Walford GA, Colomo N, Todd JN, et al. The study to understand the genetics of the acute response to metformin and glipizide in humans (SUGAR-MGH): design of a pharmacogenetic resource for type 2 diabetes. *PLoS One* 2015; 10:e0121553
29. GTEx Consortium. The GTEx Consortium atlas of genetic regulatory effects across human tissues. *Science* 2020;369:1318–1330
30. Michalski C, Cui Y, Nies AT, et al. A naturally occurring mutation in the *SLC21A6* gene causing impaired membrane localization of the hepatocyte uptake transporter. *J Biol Chem* 2002; 277:43058–43063
31. Chen Y, Chen L, Zhang H, Huang S, Xiong Y, Xia C. Interaction of sulfonylureas with liver uptake transporters OATP1B1 and OATP1B3. *Basic Clin Pharmacol Toxicol* 2018;123:147–154
32. Koenen A, Köck K, Keiser M, Siegmund W, Kroemer HK, Grube M. Steroid hormones specifically modify the activity of organic anion transporting polypeptides. *Eur J Pharm Sci* 2012;47:774–780
33. Meyer Zu Schwabedissen HE, Boettcher K, Steiner T, et al. OATP1B3 is expressed in pancreatic β -islet cells and enhances the insulinotropic effect of the sulfonylurea derivative glibenclamide. *Diabetes* 2014;63:775–784
34. Yang F, Xiong X, Liu Y, et al. CYP2C9 and OATP1B1 genetic polymorphisms affect the metabolism and transport of glimepiride and gliclazide. *Sci Rep* 2018;8:10994
35. Zheng HX, Huang Y, Frassetto LA, Benet LZ. Elucidating rifampin's inducing and inhibiting effects on glyburide pharmacokinetics and blood glucose in healthy volunteers: unmasking the differential effects of enzyme induction and transporter inhibition for a drug and its primary metabolite. *Clin Pharmacol Ther* 2009;85:78–85
36. Lee HH, Ho RH. Interindividual and interethnic variability in drug disposition: polymorphisms in organic anion transporting polypeptide 1B1 (OATP1B1; SLCO1B1). *Br J Clin Pharmacol* 2017; 83:1176–1184
37. Zhang Y, Panfen E, Fancher M, Sinz M, Marathe P, Shen H. Dissecting the contribution of OATP1B1 to hepatic uptake of statins using the OATP1B1 selective inhibitor estropipate. *Mol Pharm* 2019;16:2342–2353
38. Chen C, Mireles RJ, Campbell SD, et al. Differential interaction of 3-hydroxy-3-methylglutaryl-coa reductase inhibitors with ABCB1, ABCG2, and OATP1B1. *Drug Metab Dispos* 2005;33:537–546
39. Lee TV, Sethi MK, Leonardi J, et al. Negative regulation of notch signaling by xylose. *PLoS Genet* 2013;9:e1003547
40. Eom YS, Gwon AR, Kwak KM, et al. Notch1 has an important role in β -cell mass determination and development of diabetes. *Diabetes Metab J* 2021;45:86–96
41. Holstein A, Beil W, Kovacs P. CYP2C metabolism of oral antidiabetic drugs—impact on pharmacokinetics, drug interactions and pharmacogenetic aspects. *Expert Opin Drug Metab Toxicol* 2012;8:1549–1563
42. Zharikova OL, Fokina VM, Nanovskaya TN, et al. Identification of the major human hepatic and placental enzymes responsible for the biotransformation of glyburide. *Biochem Pharmacol* 2009;78:1483–1490
43. Gan S, Dawed AY, Donnelly LA, et al. Efficacy of modern diabetes treatments DPP-4i, SGLT-2i, and GLP-1RA in White and Asian patients with diabetes: a systematic review and meta-analysis of randomized controlled trials. *Diabetes Care* 2020;43:1948–1957
44. Leonard CE, Bilker WB, Brensinger CM, et al. Severe hypoglycemia in users of sulfonylurea antidiabetic agents and antihyperlipidemics. *Clin Pharmacol Ther* 2016; 99:538–547
45. Sana T, Aslam B, Aslam N, et al. Therapeutic effect of atorvastatin on kidney functions and urinary excretion of Glimepiride in healthy adult human male subjects. *Pak J Pharm Sci* 2016;29(Suppl.):2321–2326
46. Neerati P, Gade J. Influence of atorvastatin on the pharmacokinetics and pharmacodynamics of glyburide in normal and diabetic rats. *Eur J Pharm Sci* 2011;42:285–289
47. Brennan MB, Huang ES, Lobo JM, et al. Longitudinal trends and predictors of statin use among patients with diabetes. *J Diabetes Complications* 2018;32:27–33