

Lawrence Berkeley National Laboratory

LBL Publications

Title

Elucidating gene expression adaptation of phylogenetically divergent coral holobionts under heat stress

Permalink

<https://escholarship.org/uc/item/1hp0w15z>

Journal

Nature Communications, 12(1)

ISSN

2041-1723

Authors

Avila-Magaña, Viridiana

Kamel, Bishoy

DeSalvo, Michael

et al.

Publication Date

2021

DOI

10.1038/s41467-021-25950-4

Peer reviewed

Elucidating gene expression adaptation of phylogenetically divergent coral holobionts under heat stress

Viridiana Avila-Magaña^{1,2✉}, Bishoy Kamel ^{3,10}, Michael DeSalvo^{4,5}, Kelly Gómez-Campo¹, Susana Enríquez ⁶, Hiroaki Kitano^{7,8}, Rori V. Rohlf ⁹, Roberto Iglesias-Prieto ¹ & Mónica Medina ^{1✉}

As coral reefs struggle to survive under climate change, it is crucial to know whether they have the capacity to withstand changing conditions, particularly increasing seawater temperatures. Thermal tolerance requires the integrative response of the different components of the coral holobiont (coral host, algal photosymbiont, and associated microbiome). Here, using a controlled thermal stress experiment across three divergent Caribbean coral species, we attempt to dissect holobiont member metatranscriptome responses from coral taxa with different sensitivities to heat stress and use phylogenetic ANOVA to study the evolution of gene expression adaptation. We show that coral response to heat stress is a complex trait derived from multiple interactions among holobiont members. We identify host and photosymbiont genes that exhibit lineage-specific expression level adaptation and uncover potential roles for bacterial associates in supplementing the metabolic needs of the coral-photosymbiont duo during heat stress. Our results stress the importance of integrative and comparative approaches across a wide range of species to better understand coral survival under the predicted rise in sea surface temperatures.

¹ Biology Department, The Pennsylvania State University, University Park, PA, USA. ² Ecology and Evolutionary Biology Department, University of Colorado Boulder, Boulder, CO, USA. ³ Center for Evolutionary and Theoretical Immunology, University of New Mexico, Albuquerque, NM, USA. ⁴ School of Natural Sciences, University of California, Merced, CA, USA. ⁵ Thermo Fisher Scientific, Carlsbad, CA, USA. ⁶ Unidad Académica de Sistemas Arrecifales Puerto Morelos, ICMYL, Universidad Nacional Autónoma de México, Cancún, Mexico. ⁷ The Systems Biology Institute, Tokyo, Japan. ⁸ Okinawa Institute of Science and Technology, Okinawa, Japan. ⁹ Department of Biology, San Francisco State University, San Francisco, CA, USA. ¹⁰ Present address: US Department of Energy Joint Genome Institute, Lawrence Berkeley National Laboratory, Berkeley, CA, USA. ✉email: viridianaavilamagana@gmail.com; mum55@psu.edu

A coral holobiont comprises the cnidarian host (Hexacorallia:Scleractinia) and its associated microbiome^{1,2} that functions within multiple interaction networks of emerging metabolic, physiological, and ecological capacities of all members³. Reef-building corals are characterized by a mutualistic symbiosis with unicellular algae (Dinophyceae:Symbiodiniaceae)⁴. These photosymbionts play a primary role in host physiology and nutritional exchange, enabling reef-building in oligotrophic environments⁵. Severe loss of the algal symbionts (i.e., bleaching) is associated with changes in light intensity, salinity, and episodes of elevated temperature⁶, with possible fatal consequences for the host. Cellular models of bleaching have been developed using a few host species with each study analyzing single taxa^{7–11} or without a phylogenetic framework in mind. Diverse ranges of thermal susceptibility across different coral holobionts may be partially explained by evolutionarily divergent differential gene expression that could be adaptive. A comparative approach is particularly germane for the dissection of adaptive potential by different holobiont partners under increasingly warmer oceans. By using a controlled thermal stress experiment across three divergent Caribbean coral holobionts (Fig. 1A), we aim to determine if there have been lineage-specific innovations or a conserved molecular response in corals and their algal photosymbionts, as well as whether all members (including bacterial communities) differentially contribute to holobiont robustness.

Here we show that (1) a core set of host and Symbiodiniaceae genes have diverged in their expression among three Caribbean coral species from the Robust (*Pseudodiploria clivosa*, *Orbicella faveolata*) and Complex (*Siderastrea radians*) clades respectively, and their photosymbionts (*Breviolum faviinorum*, *Symbiodinium* A3, and *Breviolum* B5 respectively); (2) microbiomes from heat resistant corals have an increased number of expressed metabolic capabilities when compared to heat-sensitive ones; and (3) the redundancy of key metabolic pathways from different holobiont members may confer robustness to the holobiont under heat stress.

Results and Discussion

Symbiodiniaceae physiology reveals a distinctive response to heat stress. We sought to establish whether the Symbiodiniaceae physiological response in hospite during heat stress was different between coral holobionts by measuring symbiont densities, reflectance at the peak of chlorophyll a absorption at 675 nm (R_{675}) and the maximum photochemical efficiency of photosystem II (Fv/Fm). A Fv/Fm decrease quantifies the magnitude of the impact of light stress on the photosymbionts, expressed as a reduction in the maximum photochemical efficiency of the PSII pool due to photodamage accumulation (Supplementary Note 1). Symbiont density, specifically symbiont cell loss, is used here as an indicator to assess the heat-stress treatment impact. Estimated absorbance from reflectance determinations allowed the quantification of the effective light absorption cross-section of Symbiodiniaceae in hospite, a^*_{sym} , and the magnitude of this variation for samples exposed to similar levels of heat and light stress. This optical trait is a proxy for the estimation of differences among coral species in the internal light environment of the symbionts in hospite, despite the coral exposure to a similar external light environment. By comparing the a^*_{sym} and Fv/Fm it is possible to distinguish between the magnitude of the light pressure experienced by the symbionts in hospite and the level of photodamage accumulated. We found that *O. faveolata* photosymbionts (*Symbiodinium* A3), showed the largest increases in light pressure in hospite after heat stress, resulting in an important increment in a^*_{sym} though they did not accumulate the largest photodamage (Fig. 1B). In contrast, *P. clivosa* symbionts (*Breviolum*

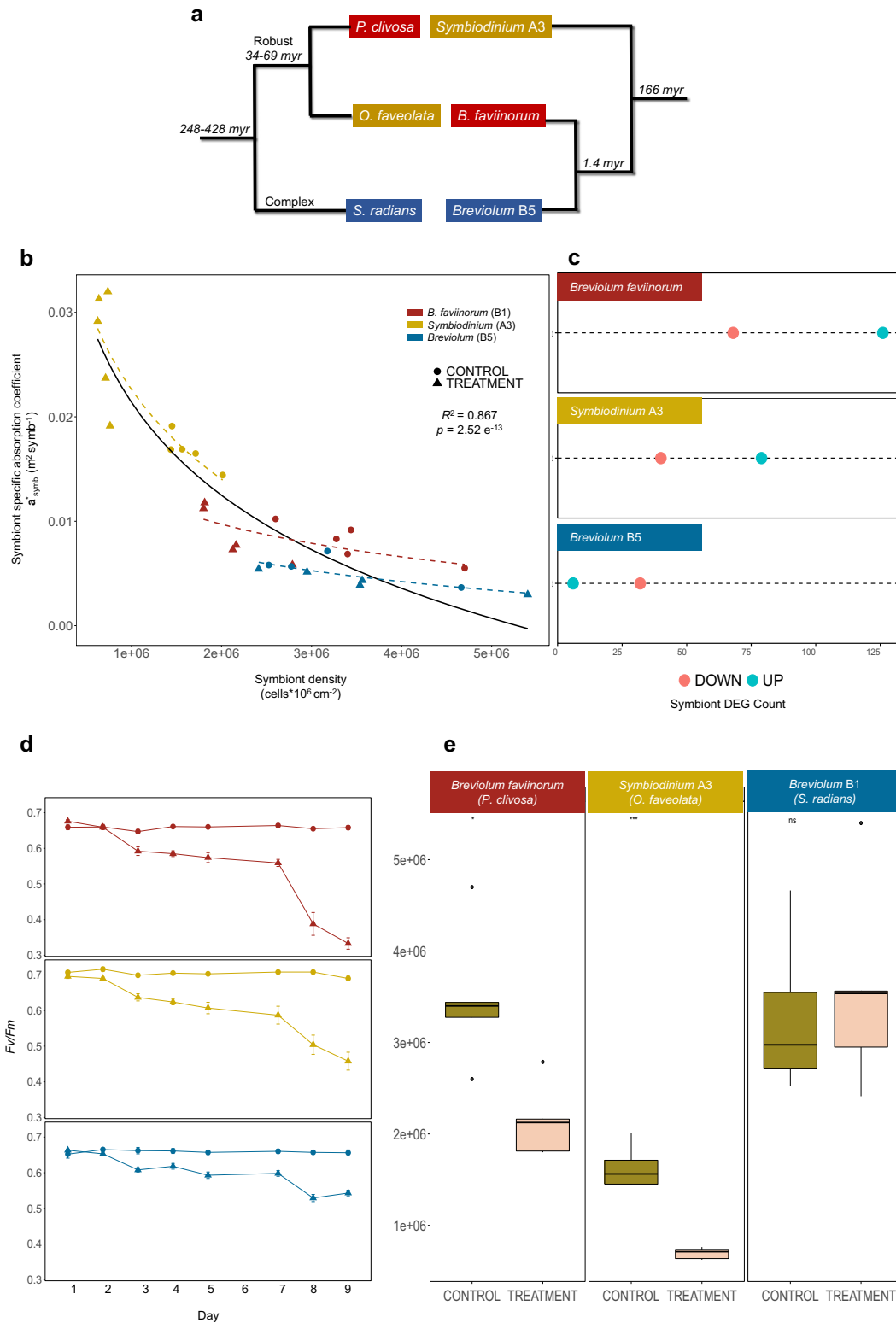
faviinorum) under much lower variation in light pressure and despite the slight changes observed in the number of photosymbionts, exhibited the largest Fv/Fm drop after heat stress treatment (Fig. 1D).

Significant differences in a^*_{sym} were observed between the three photosymbionts (ANOVA, $P < 0.05$; Fig. 1B). The low photosymbiont content of *O. faveolata* can explain the higher values estimated for *Symbiodinium* A3 *in hospite*, considering the negative non-linear association documented for both parameters¹² and also here (Fig. 1B). However, significant differences in a^*_{sym} were also observed between *Breviolum* spp. for corals harboring similar numbers of photosymbionts (Fig. 1B and Supplementary Tables S26–S28). This implies that *B. faviinorum* and *S. radians* *Breviolum* B5 photosymbionts were exposed *in hospite* to different light pressure levels. These differences are likely related to (1) intrinsic differences between photosymbiont species in their effective light absorption cross-section (a^*_{sym}); (2) the contribution of the different scattering properties of coral skeletons¹³ to modify a^*_{sym} *in hospite* for each species; and (3) the presence of host pigments in *S. radians*¹⁴, which may have allowed reducing a^*_{sym} *in hospite*, and level of light pressure and/or stress for the photosymbionts.

From these observations, it is remarkable that *Symbiodinium* A3 increased a^*_{sym} during heat stress at higher risk of reaching the threshold of symbiosis disruption but counterbalancing high light stress when compared to the *B. faviinorum* (Fig. 1B). We interpret this as the *O. faveolata*-*Symbiodinium* A3 photosymbiont's capacity to mount a robust response to high levels of light stress. Additionally, *O. faveolata*'s ability to associate with multiple Symbiodiniaceae species (e.g., *D. trenchii*) during long periods of thermal stress could guarantee a faster photosymbiont tissue repopulation but at the cost of a lower calcification rate for the coral, as it has been documented by others¹⁵. In the case of *P. clivosa*-*B. faviinorum*, we observed a significant loss of photosymbionts during heat-stress, that resulted in the largest impact of light stress on Fv/Fm . This outcome, despite the number of remaining photosymbionts still high enough to moderate the increase in a^*_{sym} , suggests *B. faviinorum*'s higher susceptibility *in hospite* to light stress. By contrast, in the *S. radians*-*Breviolum* B5 holobiont, all physiological parameters remained unaffected by the heat treatment (Fig. 1B, D, E and Supplementary Tables 2, 3, 9). Taken together all these results indicate that (1) *B. faviinorum* is a light-sensitive species in the mutualistic association with *P. clivosa*; (2) *Symbiodinium* A3 is a robust species to light stress when living in association with *O. faveolata*, whereas (3) *Breviolum* B5 living in association with *S. radians* results in a thermally resistant holobiont.

Heat stress induces specific gene expression profiles in corals.

The reference transcriptome assembly for each host resulted in 913,821, 731,432, and 685,205 transcripts for *O. faveolata*, *P. clivosa*, and *S. radians* respectively. While photosymbiont assemblies yielded 202,193, 184,910, and 173,968 transcripts for the corresponding associated Symbiodiniaceae (Supplementary Note 7 and Supplementary Fig. 1A). Orthology-based differential expression was performed by identifying orthologues using OrthoFinder¹⁶ and selecting a specific species transcriptional profile as the baseline for comparison of ortholog expression (Supplementary Fig. 2). We observed Differentially Expressed Genes (DEGs) with a similar profile pattern between the two coral species from the same clade (Robust) and suborder (Faviina), *O. faveolata* and *P. clivosa*, when compared to the outgroup taxon *S. radians* (from the Complex clade, suborder Fungiina) (Fig. 2, Supplementary Fig. 2). Under heat stress, differential gene expression is more dynamic in the host (i.e., more



genes mount an active transcriptional response), when compared to the number of significant DEGs in the photosymbiont (Supplementary Table 6).

We sought to determine if there was a functional transcriptional response to heat stress conserved across host taxa, beyond the strict orthology-based differential expression. By annotating the significant DEGs ($P < 0.01$) for each species with a KEGG ortholog (KO) (Supplementary Data 1), we retrieved genes coding for the same KO among host species. With this, we determine

KEGG module/pathway enrichment of the upregulated and downregulated genes in the three coral hosts ($p = 0.05$, Supplementary Fig. 3A–C). In all three-coral species, the ECM-receptor interaction was an underexpressed KEGG category. This pathway includes proteins from the extracellular matrix, such as collagen types I, II, IV, and VI alpha, agrin, laminin, and heparan sulfate proteoglycan (perlecan), suggesting potentially a decrease in biomineralization. Collagen downregulation has been described in other coral species in response to heat stress/

Fig. 1 Comparative analysis of the Symbiodiniaceae physiological response across species. **a** Phylogeny representing the coral and associated photosymbiont species studied. A taxonomic color assignment is linked to host species throughout all figures. (Red: *P. clivosa*, Yellow: *O. faveolata*, Blue: *S. radians*). **b** Changes in the photosymbiont-specific absorption coefficient a^*_{sym} as a function of photosymbiont density, this descriptor quantifies changes in the total effective area for light absorption experienced by each Symbiodiniaceae cell in hospite. **c** Number of DEGs after the heat treatment in each Symbiodiniaceae species (FDR < 0.001, $-2 > \log\text{FC} > 2$). The color assignment is linked to coral host (Red: *P. clivosa*-*B. faviinorum*, Yellow: *O. faveolata*-*Symbiodinium* A3, Blue: *S. radians*-*Breviolum* B5). Source data are provided as a Source Data file. **d** Fv/Fm (maximum quantum yield of PSII) measured during the nine days experiment between control (circle) ($n = 5$ *S. radians*, $n = 5$ *O. faveolata*, $n = 6$ *P. clivosa* biologically independent coral fragments) and treatment (triangles) samples ($n = 5$ *S. radians*, $n = 5$ *O. faveolata*, $n = 6$ *P. clivosa* biologically independent coral fragments). Data are presented as mean values \pm SEM. **e** Photosymbiont cell density in control ($n = 4$ *S. radians*, $n = 5$ *O. faveolata*, $n = 5$ *P. clivosa* biologically independent coral fragments) and treatment ($n = 5$ *S. radians*, $n = 5$ *O. faveolata*, $n = 5$ *P. clivosa* biologically independent coral fragments) samples. Asterisks depicts a statistical significance (t -test (two-sided), *B. faviinorum* $p = 0.0081$; *Symbiodinium* A3 $p = 2.7e-05$; ns $p > 0.05$; Supplementary Table 3). Boxplot whiskers show minima and maxima; centers indicate medians; box boundaries indicate the 25th and 75th percentiles.

bleaching^{9,11,17}. Its function is related to the extracellular matrix assembly, possibly with the cytoskeleton rearrangements, and the reductions in polyp and skeleton growth^{18,19} that take place during the stress before the disruption of the symbiotic relationship.

Only eight DEGs (KOs) were shared across all the host taxa, six genes were shared between *S. radians* and *O. faveolata*, 11 genes were shared among *S. radians* and *P. clivosa*, and 39 genes shared between the two closely related coral species, *O. faveolata* and *P. clivosa* (Fig. 2). From the eight host core DEGs, four genes shared the same expression profile (i.e., all are underexpressed): agrin, basement membrane-specific heparan sulfate proteoglycan core protein, tenascin, and acid trehalase, which is consistent with the previous KEGG enrichment results. Acid trehalase (K22078) has a conserved gene expression profile across host taxa. This gene codifies for an enzyme that breaks the carbohydrate trehalose, the accumulation of which has been suggested to play a role as an osmoprotectant in the development of symbiotic nitrogen-fixing root nodules²⁰. During heat stress, this sugar-degrading enzyme may be downregulated in the coral hosts due to a compromised Symbiodiniaceae trehalose biosynthesis and/or the host preventing trehalose degradation to promote its accumulation as osmoprotectant against oxidative stress.

From this group of eight shared significantly expressed genes (KOs) across host species, there is one gene with variable inter and intraspecific variation, deleted in malignant brain tumors 1 (*dmdbt1*). Each host species has several transcripts coding for *dmdbt1* differentially expressed (Fig. 2 and Supplementary Data 1). *dmdbt1* has been postulated in regulating host-microbe interactions since it is at the interface between defense mechanisms and the homeostasis of cell proliferation²¹. Furthermore, *dmdbt1* differential expression has been documented in *O. faveolata* upon lipopolysaccharide exposure²². In the coral *Acropora millepora*, *dmdbt1* variable expression has been reported from corals with varying susceptibility to bacterial exposure. Corals with low-mortality and control fragments upregulate this gene, suggesting a significant role in the animal-microbe symbioses maintenance²³. During the heat stress, we found two out of three *dmdbt1* transcripts, highly expressed ($\log\text{FC} \sim 8$) in *S. radians*, highlighting the relevance of the regulation of associated bacterial communities during heat stress.

Gene ontology enrichment analysis across taxa was employed to get a general representation of the biological processes differentially regulated during heat stress (Supplementary Data 3). Aminoglycan catabolism, keratan sulfate catabolic process, and sphingolipid metabolism were downregulated in all host species (Supplementary Data 3). Sphingolipid metabolism has been also documented as a part of a rheostat involved in the cnidarian heat stress response²⁴. Consistent with the DEG orthology analysis, a large number of enriched GO terms is conserved in the closely related species, *O. faveolata* and *P. clivosa* when compared to

S. radians. Diverse metabolite transport was down-regulated in both Faviina species (amino acid, sulfur amino acid, sodium ion, organic cation, L-cystine, bicarbonate, inorganic anion, coenzyme transport). Likewise, L-ascorbic acid and vitamin B6 metabolism, ammonia assimilation, and signal transduction involved in the cellular response to ammonium ion were down-regulated in heat-stressed corals (Supplementary Data 3). In contrast with the downregulation of Faviina metabolite transport, the thermal tolerant species, *S. radians*, upregulated genes involved in modified amino acid, inorganic anion transmembrane transport. Different gene transporters encoding carbonic anhydrase, belonging to the bicarbonate transport, have been identified as cnidarian endosymbiosis-related genes^{25–27}. During heat stress, it is possible that the endosymbiosis disruption affects the nutrient, and metabolite transport across the coral host and its photosymbionts.

Differences in GO enriched terms among these species revealed an upregulation of genes related to DNA replication in *O. faveolata*, whilst *P. clivosa* displayed an opposite response. DNA conformational change, and repair, were upregulated in *O. faveolata*, as well as in *S. radians*, the heat susceptible coral, *P. clivosa* display a down-regulated response (Supplementary Data 3). Oxidative stress has been implicated as a key component in the cnidarian bleaching cascade triggered by heat stress²⁸. The cellular response to oxidative stress, cell-cell adhesion, and cellular redox homeostasis was downregulated in the *S. radians* when compared with *P. clivosa*, where those GO terms were upregulated during heat stress. Reactive oxygen species response, endoplasmic reticulum to Golgi vesicle-mediated transport, protein folding in the endoplasmic reticulum, apoptotic signaling pathway, cellular amino acid, and short chain fatty acid catabolism, cellular response to glucose starvation, and monosaccharide biosynthetic process were up-regulated in both Faviina suborder coral species (Supplementary Data 3). The GO terms enriched in our dataset intersects with multiple other studies reporting similar biological processes in cnidarian studies investigating thermal stress and bleaching^{8,11,17,28–30}.

GO enrichment analysis revealed a series of conserved and contrasting responses across the three corals investigated, highlighting the fact that while ortholog level expression might not be as conserved, overall functional conservation during heat stress can still be detected between distinct species, alluding to the fact that coral species might have adapted to utilize different genes to eventually achieve the same biological functions elicited during thermal stress. (See “Supplementary Note 2” for further dissection of host response).

Symbiodiniaceae photosynthesis gene expression profile is key to heat stress resistance. Differential gene expression analyses in the photosymbiont partners revealed a pattern where in hospite

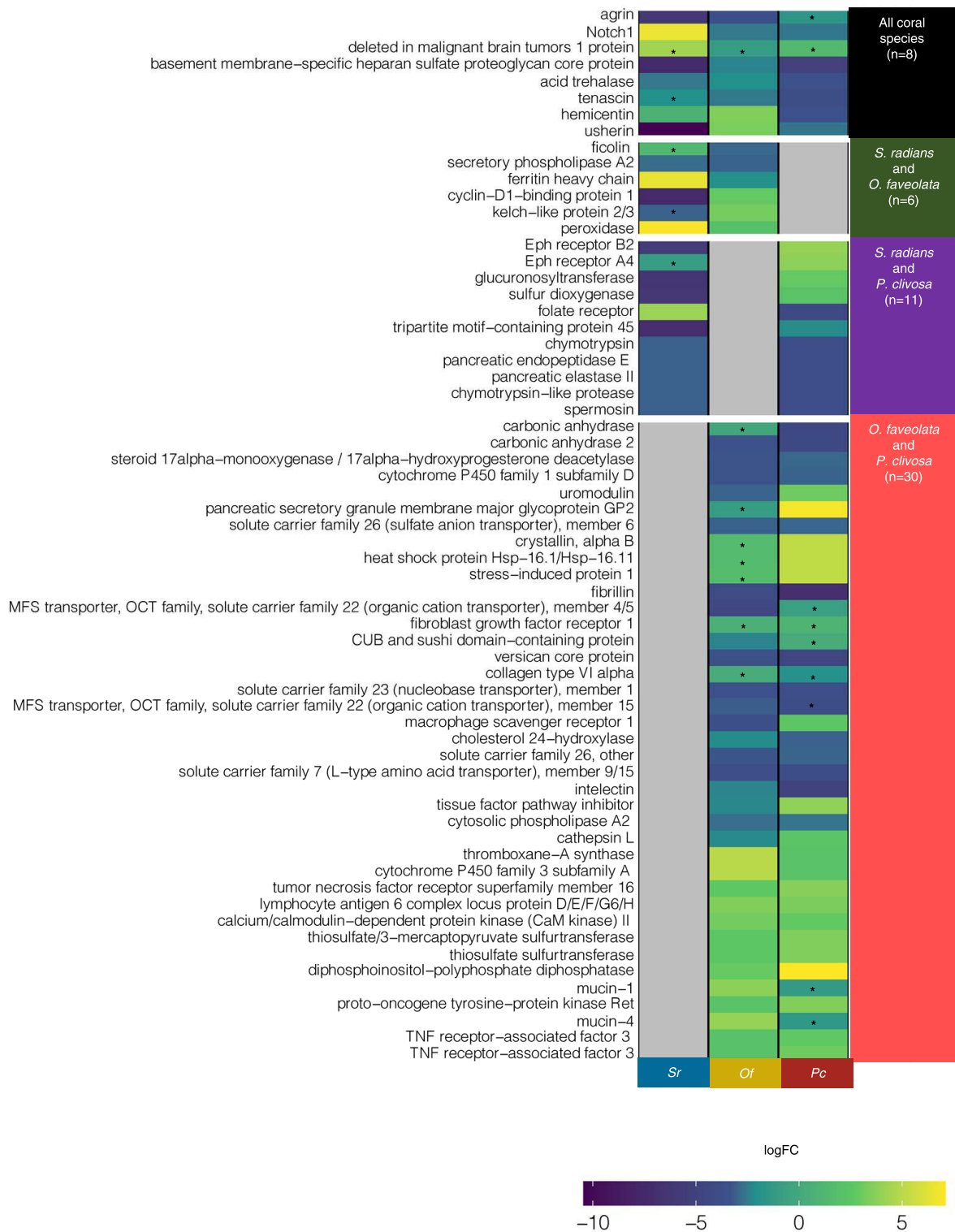


Fig. 2 Significant Differentially Expressed Genes (DEGs) across coral taxa. Each plot lines up DEGs according to their fold change in each species (FDR < 0.01). Asterisks denote variable expression from multiple transcripts with the same functional annotation (KO). Details on these genes with variable expression can be found in Tables S2, S4, S6, S8, S10, S12. Color assignment is linked to coral (Red: Pc *P. clivosa*, Yellow: Of *O. faveolata*, Blue: Sr *S. radians*).

Breviolum B5 photosymbionts displayed the smaller number of DEGs, *Symbiodinium* A3 exhibited an intermediate profile whereas *B. faviinorum* had the highest gene number at both flexible and strict FDR ($P < 0.01$; $P < 0.001$, respectively) (Fig. 3 and Supplementary Table 6). The transcriptional response mounted by Symbiodiniaceae partners is higher in the heat-stressed *P. clivosa* holobiont, when compared to its photochemical efficiency (Fig. 1D, B and Supplementary Table 6). In contrast, the heat resistant species *S. radians* exhibited fewer DEGs revealing a consistent association between symbiont photophysiology *in hospite* and the transcriptional profile displayed as a heat stress response in the photosymbiont partner.

Multiple cellular and metabolic genes involved in transport, metal homeostasis, and photosynthesis (Fig. 3 and Supplementary Data 1) were differentially expressed in the three Symbiodiniaceae species, although many transcripts remain unknown due to a lack of homology to annotated sequences. In most cases, the expression among orthologues was divergent across the three photosymbionts (Fig. 3 and Supplementary Data 1). The

determination of significant DEG at a flexible and strict FDR (< 0.001 and < 0.01) did not uncover conserved gene expression profiles among photosymbiont taxa. Only one gene was conserved between the thermo-susceptible *B. faviinorum* and *Symbiodinium* A3, deoxyribodipyrimidine photo-lyase, a coding gene involved in the repair of UV radiation-induced DNA damage³¹.

When determining genes enriched in any GO category, a similar lack of conserved response across photosymbiont taxa is observed. Only one enriched GO, sodium ion transmembrane transport, is conserved in all three photosymbionts (Supplementary Data 3). However, this category is upregulated in *Breviolum* B5 and downregulated in the photosymbionts establishing symbioses with the Faviina suborder (*B. faviinorum* and *Symbiodinium* A3). Regardless of the photosymbiont phylogenetic relatedness, a higher number of GO categories were enriched and conserved in magnitude of expression among the Faviina associated photosymbiont species. Cation and metal ion transport were downregulated, and the regulation of RNA splicing and mRNA processing was upregulated (Supplementary Data 3).

At the gene expression level, we found multiple photosynthesis species-specific DEGs in response to increasing temperature. Photosynthesis impairment during heat stress severely compromises symbioses. High levels of PSII photoinactivation reduces photosynthesis rates, a phenomenon known as photoinhibition³². During this phase, the D1 protein is compromised due to the limitation of protein repair to cope with the high photodamage rates^{33,34}. Although we did not observe a significant differential expression of D1 *psbA*; *psbH*, a gene involved in the PSII formation and necessary for photoprotection against oxidative damage, was overexpressed significantly in *B. faviinorum* ($\log_{2}FC = 2$) and *Symbiodinium* A3 ($\log_{2}FC = 1.8$), the two photosymbionts exposed *in hospite* to the highest light pressure (i.e., a^*_{sym}) and photodamage (i.e., drop in Fv/Fm). *psbH* promotes the accelerated breakdown of photodamaged D1 protein, which is key to prevent the rapid accumulation of the degraded protein and subsequent photoinactivation. *psbH* expression profile reveals a photosymbiont response to increasing light stress *in hospite* during the heat stress treatment. This photosymbiont's preemption to alleviate heat stress is in fact the expected algal response to light stress. If the duration of an elevated temperature episode is prolonged, D1 degradation and the repair rate will be exceeded by the amount of accumulated damaged PSII reaction centers, leading to photosynthesis inhibition and eventually to coral bleaching³⁵. In contrast, *Breviolum* B5 employs a different strategy by overexpressing another PSII core complex gene, *psbI* ($\log_{2}FC = 2$) which is downregulated in the other Symbiodiniaceae species. *psbI* is associated with the D1/D2 heterodimer and plays a role in the assembly and stabilization of PSII dimers³⁶. This response of the thermotolerant *Breviolum* B5 relies on the PSII stability rather than on its degradation, while *B. faviinorum* induced the genes involved in a degradation mechanism, highlighting the fact that while members of the same genus, these two photosymbionts employ quite different strategies to contend with photodamage and present very contrasting responses to heat stress.

Pentatricopeptide repeat-containing protein *mrl1* gene is overexpressed in the thermotolerant *Breviolum* B5. It has been shown that MRL1 regulates and stabilizes the RuBisCO transcript (*rbcL*), preventing its degradation³⁷. This result, in conjunction with the overexpression of *psbI*, is consistent with the low levels of light pressure shown by *Breviolum* B5 *in hospite*, which allows this coral holobiont to cope with higher temperatures without compromising algal photosynthetic capacity. Indeed, *Breviolum* B5 is capable not only of transcribing genes involved in PSII core

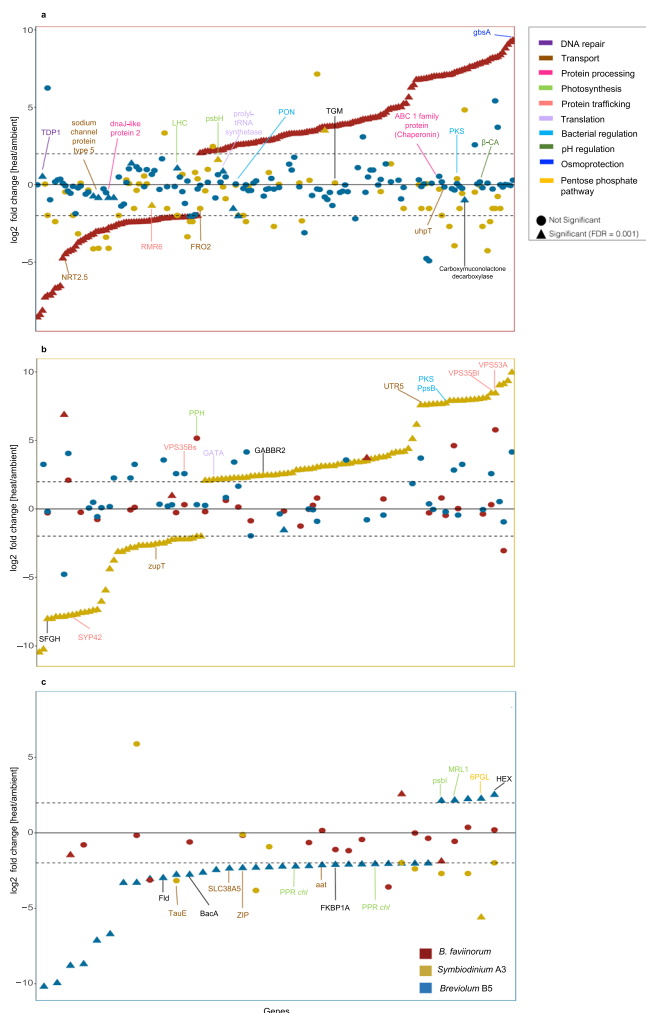


Fig. 3 Fold change of Symbiodiniaceae ortholog expression during heat stress. *B. faviinorum* (a), *Symbiodinium* A3 (b), and *Breviolum* B5 (c) as a baseline and comparing the ortholog genes across the two Symbiodiniaceae species respectively ($-2 > \log_{2}FC > 2$, FDR < 0.001). Each plot lines up DEGs according to their fold change in each species. Each plot also includes fold change for the homologs in other species. Color assignment is linked to coral host (Red: *P. clivosa*-*B. faviinorum*, Yellow: *O. faveolata*-*Symbiodinium* A3, Blue: *S. radians*-*Breviolum* B5). Source data are provided as a Source data file.

complex stabilization but also of synthesizing significant amounts of transcripts involved in chlorophyll biosynthesis, another indication of the low levels of light stress experienced *in hospite* during the heat treatment.

Symbiodinium A3 (*O. faveolata*) prevents the chlorophyll breakdown by under expressing pheophytinase ($\logFC = -2$), whereas *B. faviinorum* tends to overexpress this gene ($\logFC = 5.15$) and in B5, it is not differentially expressed. *Symbiodinium* A3 cell density is drastically reduced by the heat treatment (Fig. 1D). The inhibition of chlorophyll breakdown and the sustained PSII repair rate reflect an intermediate ability of the remaining *in hospite* cells to sustain photosynthesis under heat stress, contrary to the more sensitive *B. faviinorum*. Further evidence described in the following sections supports *Breviolum* B5 as a thermotolerant photosymbiont. (See “Supplementary Note 3” for further dissection of photosymbiont response).

Baseline expression adaptation among coral and photosymbiont species changes during heat stress. By considering the evolutionary gene expression profiles along different coral lineages, we tested for evidence of selection and the adaptive potential in these species by using the expression variance and evolution (EVE) model, also known as Phylogenetic ANOVA³⁸. This approach identifies candidate genes based on expression divergence in a phylogeny where samples are subject to ambient conditions. We developed an extension of the model, EVE-R (EVE-Response) to assess genes with divergent expression in ambient conditions between taxa, and change in expression upon a stimulus (i.e., heat stress) at least in one of the species. This set of genes displays a signature of expression adaptation and has expression levels sensitive to heat stress.

EVE-R found 67 candidates for divergent expression genes in the hosts and 39 in the photosymbionts. When gene expression levels for these potential adaptive lineage-specific genes changed in the basal expression for control samples vs. treated samples, we determined they were thermally induced. Divergent expression in ambient conditions, for genes involved in heat stress response, included 24 host and 18 photosymbiont genes (Figs. 4–5, respectively and Supplementary Data 2). No GO terms were significantly enriched (FDR 10%) for either the host or the photosymbiont. In general, host genes comprised protein processing, ER to Golgi vesicle-mediated transport, ubiquitination, lipid metabolism, metabolism of cofactors and vitamins, cell redox homeostasis, transport, autophagosome maturation, mRNA splicing, DNA repair, apoptosis, and presumably the carbon concentration mechanism.

A key candidate for expression level adaptation is the V-type protein ATPase 21 kDa subunit (ATP6V0B) (EVE divergence test $p = 0.035$), which is part of an ATPase complex acidifying the symbiosome³⁹. This ATPase constitutes a key element in the association, as a carbon concentration mechanism that favors the protonation of HCO_3^- to form CO_2 in the symbiosome to ensure a flux of CO_2 towards RuBisCO to maintain its carboxylation activity and the synthesis of photosynthates that eventually are translocated to the coral host⁴⁰. The inhibition of this proton pump blocks oxygen production, thus presumably may promote Symbiodiniaceae photosynthesis³⁹. This mechanism could allow the host to exert active control on the photosymbiont physiological output in addition to other resource limitations (i.e., nitrogen). Under heat stress, however, carbon transport from the host may be restricted affecting algal photosynthesis. Corals such as *P. clivosa* susceptible to heat stress due to the high levels of light stress and photosynthesis inhibition experienced by the photosymbionts *in hospite*, may favor the CO_2 supply for the Symbiodiniaceae, elevating mRNA

levels of ATPase, in a host attempt to stimulate photosynthesis or photosynthates translocation. In *S. radians*, coupled host-algal translocation and photosynthesis likely remain unaffected supporting the low levels of stress experienced by this species under the experimental treatment.

Our differential expression analyses of metabolic transcripts show evidence for a loss of photochemical efficiency and an increase in photodamage in *P. clivosa*-*B. faviinorum*, impairing photosynthetic support in this system. When this ATPase (*atp6v0b*) expression is compared to *S. radians* we inferred a robust interaction between the thermotolerant host and its photosymbiont. We hypothesize that during a complex ROS feedback between the *S. radians* coral host and its *Breviolum* B5 photosymbiont, the host may be able to fine-tune the ROS production by slowing down the rate of photosynthesis. This coordinated regulation hints at a potential adaptive mechanism in heat resistant species by (1) allowing the photosymbiont to adjust the rate of photosystem repair, and (2) by decreasing ROS production in response to elevated temperature, mitigating the downstream events that lead to coral bleaching.

Our EVE-R model reveals that *gst-mu* (*gst28*/glutathione-S-transferase) has a lineage conserved expression in the genus *Breviolum* where both species expressed it at similar levels in ambient samples (EVE divergence test $p = 0.032$). This suggests a frontloaded expression response (i.e., elevated transcriptional baseline levels in response to heat stimulus previously documented in *Acropora hyacinthus* corals¹⁷) to the ROS generated during host melanin production^{41,42}. *Breviolum* B5 photosymbionts express GST28 at similar levels in both control and treated samples, whereas *B. faviinorum* *gst28* expression in *P. clivosa* slightly increased upon heat stress (Fig. 5). Coral host melanin synthesis generates ROS and nitrogen intermediate compounds that have the potential to inhibit pathogens but can also cause self-damage⁴³. Corals synthesize the antioxidants catalase, peroxidase and superoxide dismutase to alleviate oxidative stress^{43,44}. Melanin levels are higher in *S. radians* whilst the more closely related corals (*P. clivosa*, *O. faveolata*) produce more prophenoloxidase⁴⁵. Host melanin in *S. radians* seems to be actively produced, therefore the expression level adaptation for GST remains constitutively active in its photosymbiont. Additional evidence supporting a late-induction of melanin production after heat stress is overexpression of the melanocyte-stimulating hormone receptor in *P. clivosa* ($\logFC = 2.0$) and underexpression in *S. radians* ($\logFC = -3.12$).

The rate of repair of the photosynthetic machinery is fundamental to understanding the disruption of coral-Symbiodiniaceae symbiosis. During the heat treatment stress and under normal conditions we observed that the uroporphyrinogen decarboxylase (*urod*) gene is highly expressed in *Breviolum* B5 in contrast to the photosymbionts of *P. clivosa* and *O. faveolata*. (Fig. 5) (EVE divergence test $p = 0.023$). This decarboxylase is involved in the formation of the precursor heme (iron) and chlorophyll through tetrapyrrole biosynthesis. The heme group is essential for the synthesis of porphyrins, specifically chlorophyll *chl. a* and *c2*. We did not perform any pigment analysis in this study, limiting our capacity to interpret this variation. The low levels of light stress experienced by *Breviolum* B5 *in hospite*, and measured as low accumulation of photodamage, may explain the maintenance of chlorophyll biosynthesis in the *S. radians*-*Breviolum* B5 association.

Intrinsic expression adaptation in response to heat stress among coral and photosymbiont species. We developed a second EVE method variant to test directly for genes with divergent expression response to the environmental stimulus, EVEReSt

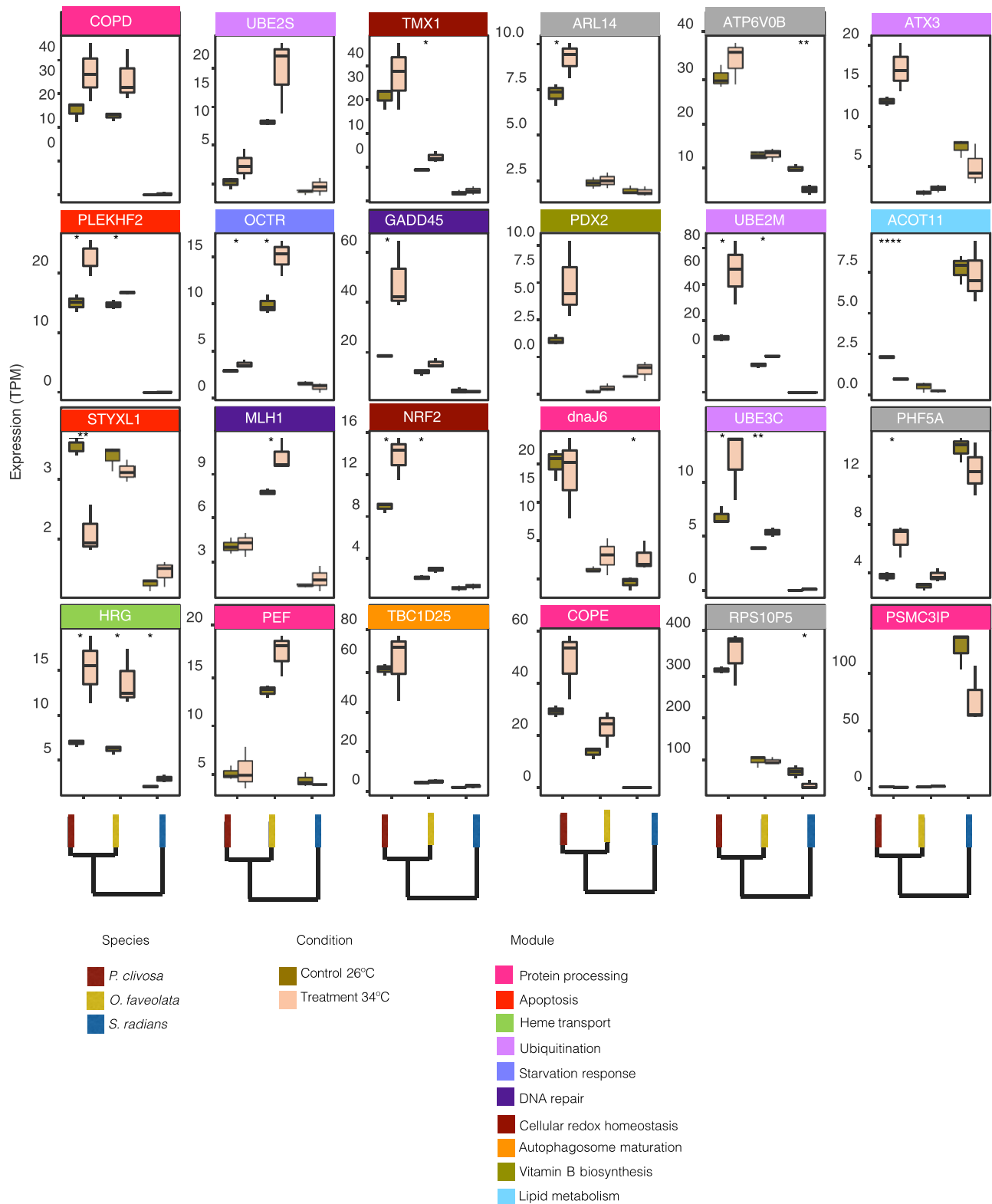


Fig. 4 Coral host expression profiles for the genes identified by EVE-R. These genes have a divergent expression in ambient conditions, as well as a differential expression between ambient conditions ($n = 3$ *S. radians*, $n = 3$ *O. faveolata*, $n = 3$ *P. clivosa* biologically independent coral fragments) and after heat stress treatment ($n = 3$ *S. radians*, $n = 3$ *O. faveolata*, $n = 3$ *P. clivosa* biologically independent coral fragments). Boxplot whiskers show minima and maxima; centers indicate medians; box boundaries indicate the 25th and 75th percentiles. (Two-sided t-test $p < 0.05$; * $p \leq 0.05$; ** $p \leq 0.01$; *** $p \leq 0.001$; **** $p \leq 0.0001$). Specific p -values for each comparison are provided in Supplementary Data 2). Source data are provided as a Source data file.

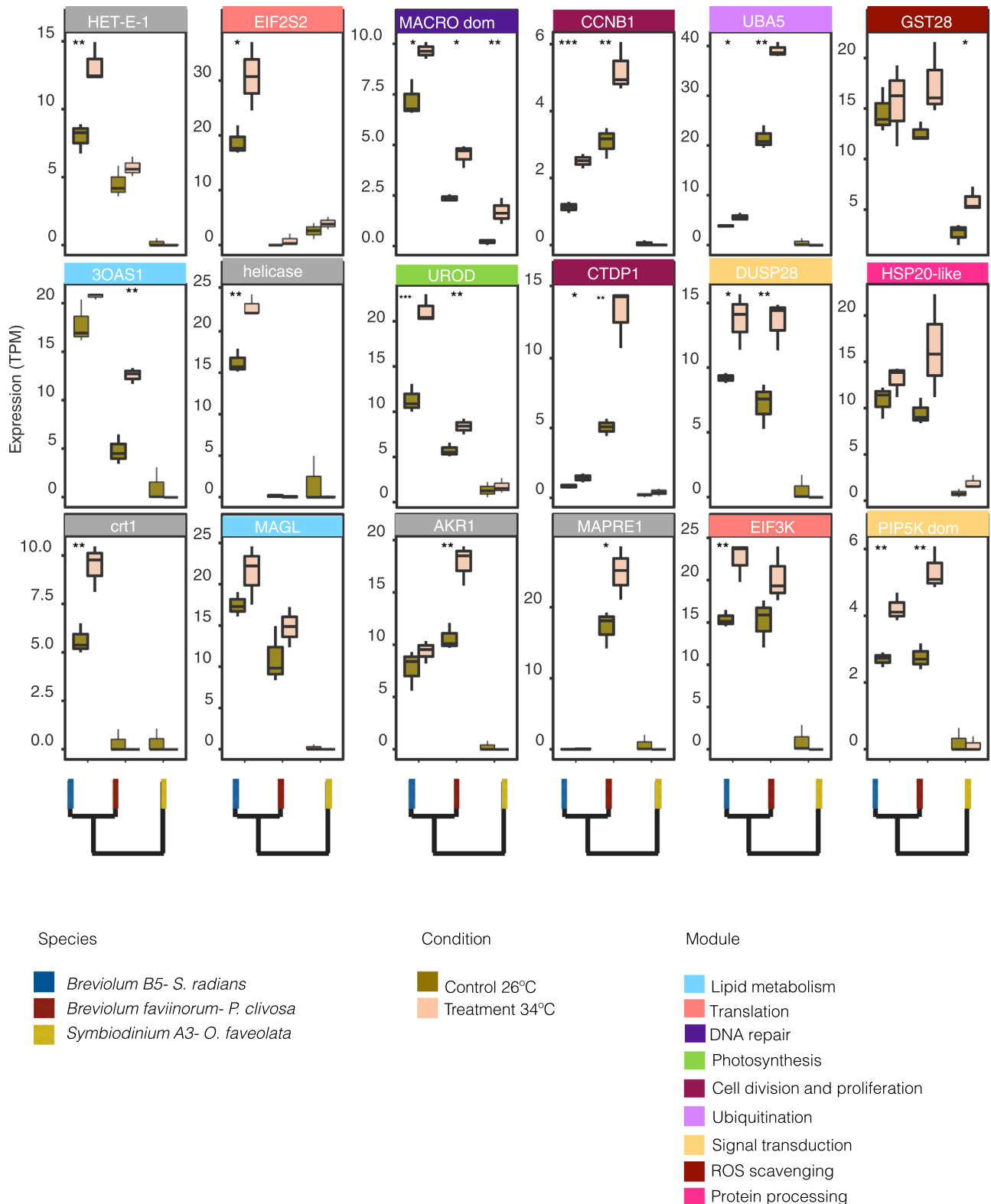


Fig. 5 Symbiodiniaceae expression profiles for the genes identified by EVE-R. These genes have expression divergence in ambient conditions, as well as a differential expression between ambient ($n = 3 S. radians, n = 3 O. faveolata, n = 3 P. clivosa$ biologically independent coral fragments) and heat stress ($n = 3 S. radians, n = 3 O. faveolata, n = 3 P. clivosa$ biologically independent coral fragments) treatments. Boxplot whiskers show minima and maxima; centers indicate medians; box boundaries indicate the 25th and 75th percentiles. (Two-sided t -test $p < 0.05$; * $p \leq 0.05$; ** $p \leq 0.01$; *** $p \leq 0.001$; **** $p \leq 0.0001$. Specific p -values for each comparison are provided in Supplementary Data 2). Source data are provided as a Source data file.

(EVE in Response to Stimulus). Contrary to EVE-R we detected genes that are not divergent in ambient conditions but are responsive to heat stress. This method accounted for the intrinsic relative response to elevated temperatures by subtracting the treatment expression values from the control values in each species and testing for expression divergence with EVE. After running the EVEReSt model, the divergent expression gene candidates were considered adaptive genes for the species to contend with thermal perturbation.

A total of 63 host genes and 76 Symbiodiniaceae genes were considered divergent with a 0.05 *p*-value cutoff (Supplementary Data 2). Functional enrichment for this dataset was performed, however, no GO terms were significantly enriched (FDR 10%) for the host nor the photosymbiont. In general, the biological processes; these genes span a range of essential cellular and metabolic pathways (e.g., starvation response, ever, Golgi pH regulation, iron transport, beta-oxidation, apoptosis, ubiquitination, phagosome maturation during heat stress).

We observed a transcriptional specific-species response with increasing expression of genes involved in DNA repair, protein processing, and degradation pathways on the thermosensitive *B. faviinorum* (Supplementary Data 2). The most divergent gene between the thermotolerant species and the susceptible species despite their phylogeny is the integral light-harvesting complex *acpPC*, a central gene in the symbiont photoacclimatory response to changes in light pressure. *acpPC* expression in the thermotolerant *Breviolum* B5 is higher when compared to *B. faviinorum* and *Symbiodinium* A3. This is consistent with photosynthesis genes overexpressed in *Breviolum* B5 (Fig. 3). The ability to actively synthesize the *acpPC* light-harvesting complex and *UROD* in *Breviolum* B5 reflects the absence of light stress during the exposure of *S. radians* to heat stress and more likely the reduction of the internal light environment of *Breviolum* B5 associated with the maintenance or even increased in photosymbiont number for some samples (Fig. 1B, D–E). This robust response to heat stress is determined by the ability of *S. radians* to maintain or even enhance the number of photosymbionts under stress. Whether this response is conferred by the host or by *Breviolum* B5, or both, remains unclear.

The EVEReSt method uncovered distinct gene expression profiles for the gene kynureninase in both host and photosymbionts highlighting the evolutionary importance of this enzyme in holobiont symbiosis (Supplementary Data 2). Kynureninase is similarly expressed in *P. clivosa* and its respective photosymbiont *B. faviinorum* but not expressed in either *S. radians* and *Breviolum* B5 or *O. faveolata* and its partner *Symbiodinium* A3. Kynureninase is an enzyme catalyzing the kynurenine (KYN) conversion to anthranilate and L-alanine. This enzyme is part of the KYN pathway involved in tryptophan degradation. In mice, KYN metabolite levels in induced gut dysbiosis decreased while Trp increased⁴⁶. After inoculation of gut microbes, levels are restored^{46,47}. Similarly, episodes of elevated temperature stimulate coral microbiome dysbiosis⁴⁸, illustrating the importance of microbiome regulation. We observed a slight decrease and a distribution shift in the bacterial diversity of *P. clivosa* (Supplementary Fig. 4F) together with the increasing kynureninase expression. The enzyme kynureninase in *S. radians* is downregulated in both partners. This suggests that Coral-Symbiodiniaceae KYN and Trp metabolism may play a role in the holobiont crosstalk with their microbiota and heat stress may contribute to its disruption.

Consistent with a bacterial diversity decrease in *P. clivosa* and *O. faveolata* the differential expression analysis revealed the overexpression of polyketide synthase and a potential microbial quorum sensing quencher gene (paraoxonase/arylesterase 1) in *P. clivosa* and its photosymbiont (*B. faviinorum*) as well as in

Symbiodinium A3, the *O. faveolata* photosymbiont (Fig. 3A, B and Supplementary Data 2). The resulting protein products could be interfering with the microbiota's survival and growth.

Comparative quantitative metabolic fingerprint reveals a distinct role of holobiont members upon temperature increase.

There is some evidence for coral-microbiome phyllosymbiosis with specific bacterial members^{49,50}. Since every coral holobiont has a characteristic physiological, transcriptional and evolutionary response to heat stress we sought to integrate the microbial communities' metabolic response to elevated temperature. A vast majority of *P. clivosa* metabolic capabilities are dictated by the host, followed by its photosymbiont (Fig. 6B, C). *O. faveolata*, which is the species with the largest thermal susceptibility according to its photosymbiont loss under stress (Fig. 1E), derives a great percentage of metabolic capabilities from its photosymbiont *Symbiodinium* A3 in combination with the host capacities. In *S. radians* a higher proportion of metabolic capabilities are derived from its microbial communities (Fig. 6B, C). As a proxy for the metabolically expressed capacities, we calculate the Quantitative Metabolic Fingerprint (QMF)⁵¹ for *O. faveolata*, *S. radians*, and *P. clivosa* holobiont members (i.e., host, photosymbiont, microbiome) (Fig. 6A). We observed a divergent baseline of expression across members of the three holobionts, with regards to QMF. Thus, each holobiont starts with different metabolic capabilities under ambient conditions creating divergent trajectories during thermal challenge (Fig. 6A).

S. radians holobiont members had the greatest QMFs capacity. In agreement with the highest proportion of deduced bacterial metabolic capabilities, there was a corresponding increment in overall expressed transcripts with metabolic function (Fig. 6A). The QMF from the associated *Breviolum* B5 was higher for most of the metabolic modules when compared with the other Symbiodiniaceae (i.e., sustaining an active metabolism). This suggests a holobiont coordinated response where all the different members are actively engaged towards a symbiosis paired with subtle attenuated Symbiodiniaceae expression (Fig. 6A–C). *Symbiodinium* A3 QMF follows a trend similar to that of the host during heat stress, however certain metabolic modules like purine, glutathione, and carbohydrate metabolism, do not follow the trajectory of the host as seen in other species. This is likely due to adjustments being made by the host and the algae to overcome the disruption of symbiosis, which is congruent with the observed algal cell loss. *P. clivosa* metabolic capabilities are contributed in higher proportion by the host, but paradoxically during heat stress the QMF is lower in many metabolic modules, as well as in the *B. faviinorum* counterpart, suggesting a less robust holobiont system highly sensitive under elevated temperature (Fig. 6A, B).

Diversity in metabolic capabilities and redundancy contributes to holobiont robustness.

We determined the shared of metabolic reactions among different members, host with Symbiodiniaceae, host and Bacteria, Symbiodiniaceae and Bacteria and multipartite (host, Symbiodiniaceae and Bacteria) as well as unique reactions performed in the holobiont (Fig. 6C). We found that the majority of metabolic capabilities in the *P. clivosa* holobiont are encoded by the host. The coral-algal set shared a good proportion of metabolic capabilities, their metabolic compatibility during heat stress is generally decoupled (Fig. 6A). The number of overlapping shared metabolic capabilities of *O. faveolata* with the algal symbiont is high, therefore, the host can compensate for some of the metabolic pathways rendered inactive by the photosymbiont. Although this holobiont had the most dramatic decrease in cell density (Fig. 1E), the QMF demonstrates that the remaining

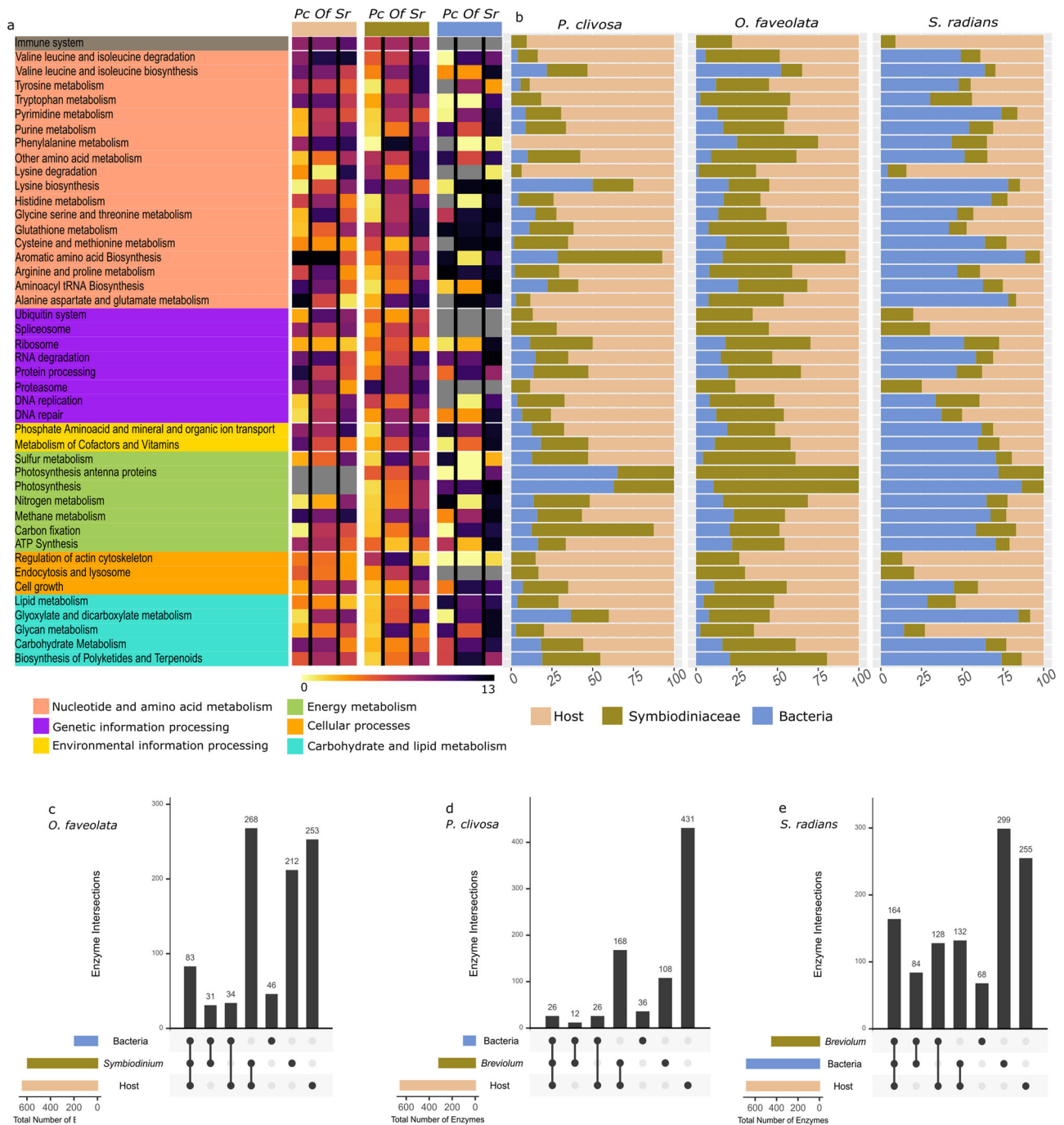


Fig. 6 Quantitative Metabolic Fingerprint (QMF) and metabolic capabilities of holobiont members differ among coral species. The impact of heat stress from different holobiont members was assessed using QMF. **a** The fold change from ambient vs. heat-treated summed proportion of mapped reads falling into each of the KEGG pathways per species (*Pc* *P. clivosa*, *Of* *O. faveolata*, *Sr* *S. radians*) and normalized by the total expression of all KEGG pathways per holobiont member is depicted as a heatmap. **b** The metabolic capabilities are represented in a bar plot and were determined by calculating the proportion of transcripts derived from the sequenced metatranscriptomes falling into each KEGG pathway in a specific holobiont member and across coral species. **(c, d)** Comparative analyses of the shared and unique metabolic capabilities (annotated KEGG enzymatic reactions inferred in the metatranscriptome) within the holobiont members across coral species: **c** *O. faveolata*; **d** *P. clivosa*; **e** *S. radians*.

population of algal cells are still metabolically active. Furthermore, despite the large reduction in photosymbiont number and the consequent fast rise in the effective light absorption per photosymbiont (a^*_{sym}), *Symbiodinium* A3 in *O. faveolata* showed a robust response to light stress, as reflected by the relative smaller declines in *Fv/Fm* observed. In comparison, *Breviolum faviinorum* showed larger *Fv/Fm* reductions associated with much smaller increases in a^*_{sym} originated from the cell loss

experienced by *P. clivosa* during heat stress. *O. faveolata* can rely on establishing symbiosis with other Symbiodiniaceae during prolonged stress raising new trade-off scenarios as previously observed¹⁵. *S. radians* shows a contrasting trend, most of the reactions are redundant across the different members, an advantageous trait during stress. Bacterial diversity in the thermotolerant species *S. radians* is significantly higher ab initio when compared to the susceptible *O. faveolata* and *P. clivosa*

(Supplementary Fig. 4). The bacterial diversity, bacterial metabolic capabilities, and transcriptional activity in the thermo-tolerant species, suggests a crucial role of coral microbiomes in holobiont metabolism which can lead to increased survival during stressful conditions.

To the best of our knowledge, we have uncovered more genes associated with a thermal stress response in coral holobionts than any previous study and we show the gene expression level adaptation for each one of those genes. Our differential expression analyses of both orthologues, and lineage-specific transcripts, revealed a non-conserved response. The documented divergent transcriptional endpoint across holobionts during a thermal challenge highlights the fact that each photosymbiont establishes a specific extended phenotype with the host. By focusing on the expression level variance using a phylogenetic framework, we captured evolutionary differences in gene expression along different branches of the Scleractinia and Symbiodiniaceae trees that are undetectable with conventional transcriptome analyses. We identified 30 conserved gene expression profiles across two members of the suborder Faviina in the Robust clade, a scleractinian branch that dates back at least 93 million years. We also identified lineage-specific adaptations for each coral and associated Symbiodiniaceae species. The conservation of these gene adaptations can now be tested within each of those genera (e.g., within the *Orbicella* species complex, or Symbiodiniaceae genera) or at higher taxonomic ranks (e.g., family) with confirmed monophyly. Our findings illustrate how knowing the evolutionary history of gene expression adaptation can help us better predict future outcomes under the unidirectional trends of climate change-induced natural selection. We have implemented novel variations (EVE-R and EVEReSt) of the Phylogenetic ANOVA to include the response to any given stimulus, making it a tool that can be universally used across taxa and under any treatment condition.

Many of these genes divergently transcribed in different coral lineages are directly involved in coral-algal symbiosis. Few of them have been previously identified as genetic markers correlated with stress tolerance in coral populations^{52,53}. The divergence observed in transcriptional activity for those genes may provide a rapid mechanism for adaptation to environmental factors at the regulatory level⁵⁴. Corals have experienced episodes of elevated temperatures through evolutionary time⁵⁵, and those lineage-specific expression shifts could be key in setting the host-photosymbiont thermal thresholds. Whether variation in transcriptional regulation contributes to faster adaptation is a fundamental question to understand the potential of coral-algal evolvability under the face of global warming. Future population level studies need to consider the regulatory potential of cnidarian and photosymbiont genomes, to build a clear understanding of the adaptive potential of each species.

Thermotolerance can be conferred through multiple layers of adaptation (i.e., at the genomic and regulatory levels). The role and the possible contribution of each regulatory level to the acquisition of thermotolerance in corals is still poorly understood, as is the possible contribution of the microbiome^{56,57}. Metabolic redundancy is key to holobiont robustness hinting at potentially different holobiont metabolic strategies (i.e., synergistic, competitive, one-way interactions) taking place during heat stress. Our data suggest that coral holobiont thermotolerance can be boosted by the redundancy of key metabolic pathways from different members though this is yet to be experimentally tested. We show that thermotolerant species harbor a stable and diverse microbiome translating as a vast array of metabolic capabilities remaining active during the thermal challenge, contrary to the susceptible species, where the bacterial activity and diversity are reduced ab initio. Our study corroborates the observations that

specific coral-microbiome dynamics can lead to different outcomes when divergent holobionts are faced with environmental changes⁵⁸. Coral robustness to heat stress depends on coral ability to minimize light stress to the symbiotic algae, and this can be achieved by different strategies, one of them is to prevent or minimize photosymbiont loss under stress.

Our results set the stage for a mechanistic understanding of how different holobiont members bestow robustness on the coral as a unit. This study highlights the power of comparative metatranscriptomics and multispecies comparisons to unravel the complex coral holobiont metabolic interactions, fundamental to better predict the species survival of these ancient holobiont interactions under the current global climate change threats.

Methods

Experimental approach. Samples of *O. faveolata*, *P. clivosa*, and *S. radians* were collected in the reef lagoon of Puerto Morelos, Mexican Caribbean, Quintana Roo, Mexico, in November 2008 (20°55'39.54" N - 86°49'58.90" W; Permit Registration MX-HR-010-MEX folio 016). Samples were transported to the mesocosm facilities at the Unidad Académica de Sistemas Arrecifales, Universidad Nacional Autónoma de México (UASA-UNAM), and placed in outdoor tanks equipped with running seawater supplied from the reef lagoon. Tanks were shaded with neutral mesh screens, allowing for the reduction of light intensity to levels similar to the collection depth (~37% of surface irradiance, Es). For all species, samples consisted of two fragments from 5 different colonies, which were distributed over two outdoor 152 L tanks ($n = 6$ specimens per species/per tank). The average flow rate in the experimental tanks was 1.45 L s^{-1} , with a turnover rate of ~105 min. Water temperature was maintained for 16 days at $28^\circ\text{C} (\pm 0.4^\circ\text{C}$ in November) after sampling using commercial aquaria heaters (Process Technology, USA), located in header tanks and connected to thermocouple sensors (J type, TEI Ingeniería, Mexico). Irradiance ($\mu\text{mol quanta m}^{-2} \text{ s}^{-1}$) and water temperature ($^\circ\text{C}$) were continuously monitored using a cosine-corrected light sensor (LI-192) connected to a Data Logger (LI-COR 1400, Lincoln, NE, USA), and Hobo data loggers (Onset Computer Corporation, MA, USA). One of which was placed in a control tank and the other in an experimental tank at Instituto de Ciencias del Mar y Limnología, Universidad Nacional Autónoma de México. Each species was represented by three biological replicates in the control tank paired with three replicates in the experimental tank.

Following the 16 days of acclimation, heaters were turned on for one of the tanks. The temperature in the control tank remained at $\sim 28^\circ\text{C}$, while in the heat-treatment tank was increased to $32^\circ\text{C} \pm 0.34$ at day 0. Photosynthetically Active Radiation (PAR) measured at noon was average $230 \pm 57 \mu\text{mol quanta m}^{-2} \text{ s}^{-1}$ for both tanks. As no signs of changes in coral color were observed for 7 days, the water temperature was increased to $34^\circ\text{C} \pm 0.30$ and maintained for 2 days until the end of the experiment. The stress period lasted a total of 9 days. During the stress treatment algal physiology was monitored daily using diving pulse amplitude modulated (PAM) fluorometry (Heinz-Walz GmbH, Germany). Measurements of the maximum photochemical efficiency of photosystem II of the photosymbiont (F_v/F_m) were performed at dusk, as this time allows for detection of the maximum value of diurnal variation in F_v/F_m ⁵⁹. At the end of the experiment, fragments were immediately flash frozen and preserved in liquid nitrogen, and kept at -80°C until further processing. Symbiodiniaceae cell density within the control and experimental coral fragments was measured for a defined area of coral tissue. For the same area and previously to freeze the samples, the optical properties of each organism were characterized according to Scheufen et al.⁶⁰ and Vásquez-Elizondo et al.⁶¹, using reflectance determinations. Reflectance at the peak of chlorophyll-a absorption at 675 nm (R_{675}) was selected to estimate the variation of the effective light absorption by Symbiodiniaceae in *hospite* (a^*_{sym}), according to the following equation: $a^*_{\text{sym}} = [\text{De}_{675}/\text{photosymbiont density}] \cdot \ln(10)$ (see refs. 17,60,62). De_{675} refers to the estimated absorbance^{62,63} and was calculated as $[\text{De}_{675} = \log(1/R_{675})]$. This parameter, a^*_{sym} , can be used as a proxy for the variability among species and coral phenotypes in the efficiency for solar energy collection of Symbiodiniaceae in *hospite*⁶². The parameterization is similar to the calculation of the specific absorption coefficient of chlorophyll-a developed for phytoplankton^{64–67} and previously determined for symbiotic tissues by^{68–70}, and more recently for the whole coral structure by^{12,60,62}. The quantification of a^*_{sym} allows a description of the magnitude of the effective area expanded by each photosymbiont cell in *hospite* for solar energy collection and has the units $\text{m}^2 \text{ sym}^{-1}$. Differences among control and heat treatments were analyzed using a *t*-test for all the tested parameters. One-way ANOVA and Post-hoc Tukey HSD tests were used to detect significant differences on all the photophysiology traits studied among Symbiodiniaceae species in the response to thermal stress. An ANCOVA analysis allowed for the assessing the differences between species in the linear relation of log-log transformed a^*_{sym} and symbiont density. All statistical analyses were conducted using R (v. 3.6.0) and using the car library to implement type III errors.

RNA library preparation. Coral tissue from three biological replicates for the control and treatment were ground to a fine powder in liquid nitrogen, after skeleton removal on dry ice using a chisel and hammer. We extracted total RNA using the mirVana miRNA Isolation Kit (Life Technologies) according to the manufacturer's protocol, with the following modification. In order to disrupt the photosymbiont cell wall, for all the collected and ground corals, we added 0.2 grams of coral fine powder into a tube containing of 0.1 mm silica beads and we added immediately the Lysis/Binding Buffer. We used a bead better for 30 s and we let sit the sample for 1 min on ice, this procedure was repeated three times in order to achieve cell wall and cell lysis in the sample. The resultant supernatant was used for the subsequent steps using the manufacturer's protocol. We purified and concentrated the RNA by using the RNA Clean and Concentrator kit (Zymo Research, Irvine, USA). RNA yield was assessed on a Nanodrop and Qubit using 2.0 RNA Broad Range Assay Kit (Invitrogen). We verified RNA quality using the Agilent Bioanalyzer 2100 (Agilent Technologies, Santa Clara, USA). The RNA samples had an RNA Integrity Number (RIN) between 8.3 and 9.5 (Supplementary Table 1). Total RNA samples (100 ng per sample) were sent for metatranscriptome sequencing to the JGI, in Walnut Creek, California. RNA integrity and quality were again reassessed prior to the subsequent ribosomal RNA depletion and mRNA enrichment from whole holobionts employing the Ribo-Zero kits (Epicenter). Following the RiboZero protocol, mRNA was converted to cDNA and amplified. The libraries were sequenced on the Illumina HiSeq 2000 platform using 2 × 151 bp overlapping paired end reads.

Metatranscriptome assembly, quantification, and expression analyses. The raw reads were quality-trimmed to Q10 adapter-trimmed and then filtered for process artifacts using BBDuk⁷¹. Ribosomal RNA reads were removed by mapping against a trimmed version of the Silva database using BBmap (<http://sourceforge.net/projects/bbmap>)⁷¹. A summary of metatranscriptome libraries sequencing statistics is provided in Supplementary Table 5. In order to generate a de novo reference metatranscriptome for each holobiont species, the cleaned and filtered reads from the replicates from control and treatment fragments per each species were pooled and assembled using Trinity (v2.4.0)⁷², generating three metatranscriptomes (*O. faveolata*, *S. radians*, and *P. clivosa*).

In order to identify and separate the different members (i.e., host, photosymbiont and bacterial associated communities) of the holobiont per each metatranscriptome species assembly, a blastn search using the megablast-dc algorithm⁷³ was performed. A local database built with available cnidarian genomes (*Nematostella vectensis*⁷⁴, *Acropora digitifera*⁷⁵, *Orbicella faveolata*³, and *Exaiptasia pallida*⁷⁶), Symbiodiniaceae genomes (*Breviolum minutum*⁷⁷, *Fugacium kawagutii*⁷⁸, and *Symbiodinium microadriaticum*⁷⁹) as well as *Breviolum* transcriptomes⁸⁰ was used for the aforementioned blastn⁷³. To identify bacterial species represented in each coral holobiont metatranscriptome we computed a blastx alignment with DIAMOND (v0.8.22)⁸¹ against nr. The results were inspected, and bacterial taxa were filtered using MEGAN (v5)⁸². The bacterial taxa identification was used to retrieve full bacterial genomes corresponding to the blastx matches from NCBI. We added all these bacterial genomic sequences obtained at the previous step to the coral host and photosymbiont genome database and we performed the blastn search using the MEGABLAST-DC algorithm⁶¹ to select high confidence bacterial transcripts. Transcriptome completeness was assessed using the bioinformatics tool BUSCO (Benchmarking Universal Single-Copy Orthologues) (v4.1.4)⁸³ using the Metazoa odb9 set against the three separated host transcriptomes for the three coral species, and by using the Eukarya database against the three associated- Symbiodiniaceae transcriptomes. We determined transcriptomes statistics such as N50 and mean length by using abyss-fac (v2.1.5)⁸⁴. Summary statistics for each assembly are provided in Supplementary Note 7, Supplementary Fig. 1.

Kallisto (v0.43.0)⁸⁵ was used to perform a pseudoalignment and to quantify transcript abundances. Kallisto quantification does not rely on an available genome reference, instead, it uses de novo assembled reference transcriptomes. A comparison of counts per million, a correlation matrix and principal component analysis among samples was done for quality check of the replicates per species. Expression analysis was performed using the DESeq2 software (v1.16.1)⁸⁶. Differential Expressed Genes (DEGs) were defined by using both a strict cutoff threshold of FDR < 0.001 and a flexible FDR < 0.01, and $-2 < \log_2 \text{Fold Change} > 2$. Amino acid sequences were predicted from the Coral host and Symbiodiniaceae transcriptomes by using Transdecoder (v2.0.1)⁸⁷. Orthologous groups of protein sequences amongst the three coral and their associated three photosymbiont species were determined with the OrthoFinder (v2.4.0)¹⁶ bioinformatics tool, using default parameters. Using reciprocal best-hits via BLAST all-v-all algorithm, Orthofinder determined the number of conserved putative orthologues among the three coral and three photosymbiont species. By a custom python script, the ortholog differential gene expression (logFC) was retrieved for each expression dataset per species against the other two species.

Functional Gene Ontology (GO) Summaries. Gene ontology (GO) annotations for genes were obtained through eggNOG-mapper (v2.0)^{88,89}. The GO annotation was used to identify gene functional annotation. GO enrichment analysis was performed using RBGOA⁹⁰, an R package available on GitHub (GO-MWU, https://github.com/zoon/GO_MWU) enabling us to measure significance on a

continuous value by performing Mann–Whitney U tests. Signed log *p*-values from the previous differential expression were used as input for the enrichment analyses. We performed this analysis for the coral and photosymbiont taxa, enriched GOs per host or photosymbiont were filtered based on FDR < 0.05. Conserved enriched GO terms across host and photosymbiont species were determined using set operations.

Symbiodiniaceae genotyping. Approximately 0.2 g of coral fine powder obtained at RNA library preparation previous step was used as the input material for the DNA extraction. DNA was extracted using the Mo Bio Laboratories PowerFecal DNA Isolation Kit, following the manufacturer's standard procedure. 30 ng of total DNA was used to amplify the Symbiodiniaceae ITS2 region using the oligonucleotide primers described in Pochon et al.,⁹¹ (Supplementary Table 8). Each 30 µL PCR reaction was prepared with 10 µL GoTaq (Promega), 3 µL forward primer (10 µM), 3 µL reverse primer (10 µM), 2 µL template DNA, and 12 µL PCR-grade water. PCR amplifications consisted of a 5 min denaturation at 94 °C; 30 cycles of 40 s at 95 °C, 2 min at 59 °C and 1 min at 72 °C; and 5 min at 72 °C. These amplicons were sequenced using Illumina MiSeq 250 bp PE libraries, targeting ~ 50 K reads at the Genomic Sequencing and Analysis Facility, University of Texas. A quality check on the sequencing data was performed using FastQC (v0.11.2)⁹². We built a script to run a pipeline processing all the samples at once. Pair end data from each sample were merged using FLASH (v1.2.11)⁹³ with overlapping of 300 nucleotides. A quality filtering on the extended amplicons was performed using USEARCH (v6.1)⁹⁴ (fastq_filter option). For finding the unique OTUs, identical sequences were removed with the USEARCH function for dereplication (derep_fulllength). OTUs were clustered from the sequences in all samples with 97% similarity through the cluster_otus function in USEARCH. Then all the sequences for each colony sample were mapped to the OTUs to assess the specific abundance using usearch_global. Absolute abundances were normalized by calculating the OTU abundance per coral sample by the total abundance ratio. OTUs with < 20 reads in a coral species were discarded. OTU identification was done using blastn against a curated database with sequences from *Cladocopium* published in⁹⁵, and other genera including, *Symbiodinium*, *Breviolum*, *Durusdinium*, and *Effrenium* from ref.⁹⁶.

16 S rRNA analyses. Approximately 0.2 grams of coral fine powder obtained at the RNA library preparation previous step was used as the input material for the DNA extraction. DNA was extracted using the Mo Bio Laboratories PowerFecal DNA Isolation Kit, following the manufacturer's standard procedure. 10 ng of total DNA was used to amplify the rRNA DNA 16 S region using the oligonucleotide primers using the 515 F/806 R primer pair that targets bacterial and archaeal communities for V4-V5 (16 S) described in Parada et al.,⁹⁷ (Supplementary Table 8). Each 25 µL PCR reaction was prepared with 10 µL 5Prime HotMaster Mix (VWR International), 0.5 µL forward primer (10 µM), 0.5 µL reverse primer (10 µM), 1 µL template DNA, and 13 µL PCR-grade water. PCR amplifications consisted of a 3 min denaturation at 94 °C; 30 cycles of 45 s at 94 °C, 60 s at 50 °C and 90 s at 72 °C; and 10 min at 72 °C. These amplicons were sequenced using Illumina MiSeq 250 bp PE libraries, targeting ~ 200 K total reads per sample (Supplementary Table 7). Sequencing was done at the JGI. We used QIIME2 (v2017.7)⁹⁸ and DADA (v2)⁹⁹ to denoise the amplicon sequences to determine the amplicon sequence variants (ASV) to process all 16 S rRNA libraries. We estimated the alpha Shannon diversity index, and Chao richness by using the phyloseq (v1.32.0)¹⁰⁰, and microbiome R packages (v1.10.0) (<https://microbiome.github.io/microbiome/>). vegan R package (v2.5-6)¹⁰¹ was used to compute and visualize the rarefaction curves for each sample.

Quantitative metabolic fingerprinting (QMF). The QMF was calculated by normalizing by the median expression at the module level (KEGG metabolic pathway) to the total mapped reads in each metatranscriptome^{51,102}. Briefly KEGG (Kyoto Encyclopedia of Genes and Genomes) pathways and KEGG Ortholog (KO) annotations were assigned to assembled transcripts for each metatranscriptome using MEGAN (v5)⁸². We only considered genes with at least 10 Transcripts Per Million (TPM) in at least 2 control and/or treatment samples. We calculated the TPM mapping for each transcript mapping to a certain KEGG module for the whole holobiont. The number of transcripts belonging to each KEGG module per holobiont member (Host, Symbiodiniaceae, and Bacteria) was calculated.

Metabolic capabilities and redundancy analyses. The transcriptomes of each member for the three coral species were annotated retrieving the Enzyme Commission (EC) Number from the KEGG database using MEGAN (v5)⁸². Using a customized Perl script EC total reactions were quantified. The metabolic reactions were classified as multipartite if all the holobiont members (Host, Symbiodiniaceae, and Bacteria) could perform the same metabolic reaction, bipartite if at least the reaction is present in two members (Host-Symbiodiniaceae, Host-Bacteria, Symbiodiniaceae-Bacteria) and unique if a single member could perform a specific reaction. Gene expression (Transcript Per Million) of these enzymes per taxa in the three coral holobionts was quantified and classified per category: multipartite if all the members are capable to perform an enzymatic reaction; dipartite if at least two members perform the same reaction or unique when just one member has the capability to perform a specific enzymatic reaction.

Expression variance and evolution model. Through RNA-seq is possible to test the variation in gene expression among species and within species assuming gene expression as a quantitative trait. By considering a phylogenetic ANOVA and the Expression Variance and Evolution Model EVE³⁸ that parametrizes the ratio (β) of population to evolutionary expression level, it is possible to detect genes with ratios between lineage expression divergence, as well as within species expression diversity. If there is stabilizing selection or no selection is acting in the expression (quantitative trait) then β will remain constant. If this ratio of within-species expression variance to across species expression evolutionary variance is higher and the variance is more within versus between lineages, there is diversity of expression. When β is lower for genes with an increased variance between lineages, lineage specific expression shifts can be tested, i.e., expression divergence. Here we use EVE to identify genes with high expression divergence in coral hosts and their dinoflagellate photosymbiont as candidates for expression level adaptation.

A gene expression matrix with the control samples for a core conserved gene among coral and Symbiodiniaceae species defined by orthology was generated by using Agalma (v0.5.0)¹⁰³. The former phylogenomic algorithm was also used to build the coral and Symbiodiniaceae phylogenetic tree needed to run the EVE model. The EVE model calculates a likelihood ratio test (LRT) test to examine the null hypothesis of a β ratio for a given gene equal to β for all the tested genes. χ^2 distribution is expected for the LRT statistic under the null model. By using a cutoff value of $p < 0.05$, candidate genes were determined for lineage-specific shifts in expression vs. expression diversity gene candidates deviated from the null distribution. Our first approach, EVE-R (EVE-Response) considered candidate genes determined by the model as divergent expression with a different expression baseline between species from control samples. Genes were filtered by selecting those for which expression changed after the heat treatment. Our second approach EVEReSt (EVE in response to stimulus) took into account the intrinsic response to heat stress by subtracting the expression values from the treatment to the control samples per species. After running the EVE model, the divergent expression gene candidates were considered as likely thermal adaptive genes.

Gene ontology enrichment analysis was performed using RBGOA⁹⁰. Since we wanted to test our specific EVE ortholog gene expression as the overall set of genes and determine enriched GOs for the adaptive gene expression candidates, a Fisher exact test was performed. Adaptive gene expression candidates were labeled as 1, and the rest of the orthologues expression was set to 0. This binary list was used as input for the enrichment analyses. This analysis was performed for the coral host and photosymbiont taxa.

Reporting Summary. Further information on research design is available in the Nature Research Reporting Summary linked to this article.

Data availability

All raw sequencing data that support the findings of this study have been deposited in the National Center for Biotechnology Information Sequencing Reading Archive (SRA) and are accessible through the SRA Series accession numbers: “SRP123687”, “SRP123688”, “SRP123689”, “SRP123701”, “SRP123703”, “SRP123705”, “SRP123711”, “SRP123713”, “SRP123717”, “SRP123716”, “SRP123715”, “SRP123719”, “SRP123718”, “SRP123722”, “SRP123725”, “SRP123724”, “SRP123726”, “SRP123727”, “SRP325190”, “SRP325186”, “SRP325185”, “SRP325188”, “SRP325181”, “SRP325183”, “SRP325199”, “SRP325197”, “SRP325194”, “SRP325196”, “SRP325195”, “SRP325192”, “SRP325184”, “SRP325198”, “SRP325193”, “SRP325201”, “SRP325203”, “SRP325182”. Additionally all raw and filtered metatranscriptomic and 16 S rRNA amplicon sequencing data, statistics, and quality sequencing reports for *Orbicella faveolata*, *Siderastrea radians* and *Pseudodiploria clivosa* are available at the US Department of Energy’s Joint Genome Institute (JGI) Genome Portal (<https://genome.jgi.doe.gov/portal>) with accession numbers: 1086628, 1086630, 1086632, 1086634, 1086636, 1086638, 1086592, 1086594, 1086596, 1086598, 1086600, 1086602, 1086622, 1086624, 1086626, 1086616, 1086618, 1086620, 1101076. (Community Sequencing Project 1622: How do coral hosts communicate with their associated microbial community?). Data generated in this study have also been deposited in the Dryad repository (<https://doi.org/10.5061/dryad.k3j9kd57b>). Source data are provided with this paper.

Code availability

The code to replicate our analyses is available in the Zenodo repository (<https://doi.org/10.5281/zenodo.5310663>).

Received: 18 February 2020; Accepted: 1 September 2021;

Published online: 30 September 2021

References

- Rohwer, F., Seguritan, V., Azam, F. & Knowlton, N. Diversity and distribution of coral-associated bacteria. *Mar. Ecol. Prog. Ser.* **243**, 1–10 (2002).
- Rohwer, F., Breitbart, M., Jara, J., Azam, F. & Knowlton, N. Diversity of bacteria associated with the Caribbean coral *Montastraea franksi*. *Coral reefs* **20**, 85–91 (2001).
- Kamel, B. S. Homology, Homoplasy, and The Holobiont: A Comparative Genomics Approach. (The Pennsylvania State University, University Park, 2016).
- LaJeunesse, T. C. et al. Systematic revision of Symbiodiniaceae highlights the antiquity and diversity of coral endosymbionts. *Curr. Biol.* **28**, 2570–2580. e2576 (2018).
- Muscatine, L. & Porter, J. W. Reef corals: mutualistic symbioses adapted to nutrient-poor environments. *Bioscience* **27**, 454–460 (1977).
- Glynn, P. W. Coral reef bleaching: facts, hypotheses and implications. *Glob. Change Biol.* **2**, 495–509 (1996).
- Thomas, L. et al. Mechanisms of thermal tolerance in reef-building corals across a fine-grained environmental mosaic: lessons from Ofu. *Am. Samoa. Front. Mar. Sci.* **4**, 434 (2018).
- DeSalvo, M. et al. Differential gene expression during thermal stress and bleaching in the Caribbean coral *Montastraea faveolata*. *Mol. Ecol.* **17**, 3952–3971 (2008).
- DeSalvo, M. K., Sunagawa, S., Voolstra, C. R. & Medina, M. Transcriptomic responses to heat stress and bleaching in the elkhorn coral *Acropora palmata*. *Mar. Ecol. Prog. Ser.* **402**, 97–113 (2010).
- Pinzón, J. H. et al. Whole transcriptome analysis reveals changes in expression of immune-related genes during and after bleaching in a reef-building coral. *R. Soc. open Sci.* **2**, 140214 (2015).
- Maor-Landaw, K. & Levy, O. in *The Cnidaria, Past, Present and Future* (Springer, 2016).
- Scheufen, T., Iglesias-Prieto, R. & Enriquez, S. Changes in the number of symbionts and *Symbiodinium* cell pigmentation modulate differentially coral light absorption and photosynthetic performance. *Front. Mar. Sci.* **4**, 309 (2017).
- Enriquez, S., Méndez, E. R., Hoegh-Guldberg, O. & Iglesias-Prieto, R. Key functional role of the optical properties of coral skeletons in coral ecology and evolution. *Proc. R. Soc. B: Biol. Sci.* **284**, 20161667 (2017).
- Sassi, R., Sassi, C. F. C., Gorch-Lira, K. & Fitt, W. K. Pigmentation changes in *Siderastrea* spp. during bleaching events in the coastal reefs of northeastern Brazil. *Lat. Am. J. Aquat. Res.* **43**, 176–185 (2015).
- Pettay, D. T., Wham, D. C., Smith, R. T., Iglesias-Prieto, R. & LaJeunesse, T. C. Microbial invasion of the Caribbean by an Indo-Pacific coral zooxanthella. *Proc. Natl Acad. Sci.* **112**, 7513–7518 (2015).
- Emms, D. M. & Kelly, S. OrthoFinder: solving fundamental biases in whole genome comparisons dramatically improves orthogroup inference accuracy. *Genome Biol.* **16**, 157 (2015).
- Barshis, D. J. et al. Genomic basis for coral resilience to climate change. *Proc. Natl Acad. Sci.* **110**, 1387–1392 (2013).
- Colombo-Pallotta, M., Rodríguez-Román, A. & Iglesias-Prieto, R. Calcification in bleached and unbleached *Montastraea faveolata*: evaluating the role of oxygen and glycerol. *Coral Reefs* **29**, 899–907 (2010).
- Tambutté, S. et al. Coral biomineralization: from the gene to the environment. *J. Exp. Mar. Biol. Ecol.* **408**, 58–78 (2011).
- Iturriaga, G., Suárez, R. & Nova-Franco, B. Trehalose metabolism: from osmoprotection to signaling. *Int. J. Mol. Sci.* **10**, 3793–3810 (2009).
- Rosenstiel, P., Philipp, E. E., Schreiber, S. & Bosch, T. C. Evolution and function of innate immune receptors—insights from marine invertebrates. *J. Innate Immun.* **1**, 291–300 (2009).
- Fuess, L. E., Weil, E. & Mydlarz, L. D. Associations between transcriptional changes and protein phenotypes provide insights into immune regulation in corals. *Dev. Comp. Immunol.* **62**, 17–28 (2016).
- Wright, R. M. et al. Intraspecific differences in molecular stress responses and coral pathobiome contribute to mortality under bacterial challenge in *Acropora millepora*. *Sci. Rep.* **7**, 1–13 (2017).
- Kitchen, S. A. & Weis, V. M. The sphingosine rheostat is involved in the cnidarian heat stress response but not necessarily in bleaching. *J. Exp. Biol.* **220**, 1709–1720 (2017).
- Hu, M., Zheng, X., Fan, C.-M. & Zheng, Y. Lineage dynamics of the endosymbiotic cell type in the soft coral. *Xenia. Nat.* **582**, 534–538 (2020).
- Matthews, J. L. et al. Optimal nutrient exchange and immune responses operate in partner specificity in the cnidarian-dinoflagellate symbiosis. *Proc. Natl Acad. Sci.* **114**, 13194–13199 (2017).
- Lehnert, E. M. et al. Extensive differences in gene expression between symbiotic and aposymbiotic cnidarians. *G3: Genes, Genomes, Genet.* **4**, 277–295 (2014).
- Weis, V. M. Cellular mechanisms of Cnidarian bleaching: stress causes the collapse of symbiosis. *J. Exp. Biol.* **211**, 3059–3066 (2008).
- Davy, S. K., Allemand, D. & Weis, V. M. Cell biology of cnidarian-dinoflagellate symbiosis. *Microbiol. Mol. Biol. Rev.* **76**, 229–261 (2012).
- Louis, Y. D., Bhagooli, R., Kenkel, C. D., Baker, A. C. & Dyall, S. D. Gene expression biomarkers of heat stress in scleractinian corals: promises and

- limitations. *Comp. Biochem. Physiol. Part C: Toxicol. Pharmacol.* **191**, 63–77 (2017).
31. Reef, R. et al. Photoreactivation is the main repair pathway for UV-induced DNA damage in coral planulae. *J. Exp. Biol.* **212**, 2760–2766 (2009).
 32. Warner, M., Fitt, W. & Schmidt, G. The effects of elevated temperature on the photosynthetic efficiency of zooxanthellae in hospite from four different species of reef coral: a novel approach. *Plant, Cell Environ.* **19**, 291–299 (1996).
 33. Warner, M. E., Fitt, W. K. & Schmidt, G. W. Damage to photosystem II in symbiotic dinoflagellates: a determinant of coral bleaching. *Proc. Natl Acad. Sci.* **96**, 8007–8012 (1999).
 34. Takahashi, S., Nakamura, T., Sakamizu, M., Woelik, R. V. & Yamasaki, H. Repair machinery of symbiotic photosynthesis as the primary target of heat stress for reef-building corals. *Plant Cell Physiol.* **45**, 251–255 (2004).
 35. McGinley, M. P. et al. Transcriptional response of two core photosystem genes in *Symbiodinium* spp. exposed to thermal stress. *PLoS ONE* **7**, e50439 (2012).
 36. Ikeuchi, M., Shukla, V. K. & Pakrasi, H. B. Directed inactivation of the *psbI* gene does not affect Photosystem II in the cyanobacterium *Synechocystis* sp. PCC 6803. *Mol. Gen. Genet.* **249**, 622–628 (1995).
 37. Johnson, X. et al. MRL1, a conserved Pentatricopeptide repeat protein, is required for stabilization of rbcL mRNA in *Chlamydomonas* and *Arabidopsis*. *Plant Cell* **22**, 234–248 (2010).
 38. Rohlf, R. V. & Nielsen, R. Phylogenetic ANOVA: the expression variance and evolution model for quantitative trait evolution. *Syst. Biol.* **64**, 695–708 (2015).
 39. Barott, K. L., Venn, A. A., Perez, S. O., Tambutté, S. & Tresguerres, M. Coral host cells acidify symbiotic algal microenvironment to promote photosynthesis. *Proc. Natl Acad. Sci.* **112**, 607–612 (2015).
 40. Suescún-Bolívar, L. P., Iglesias-Prieto, R. & Thome, P. E. Induction of glycerol synthesis and release in cultured *Symbiodinium*. *PLoS ONE* **7**, e47182 (2012).
 41. Palmer, C. V., Bythell, J. C. & Willis, B. L. Levels of immunity parameters underpin bleaching and disease susceptibility of reef corals. *FASEB J.* **24**, 1935–1946 (2010).
 42. Mydlarz, L. D., McGinty, E. S. & Harvell, C. D. What are the physiological and immunological responses of coral to climate warming and disease? *J. Exp. Biol.* **213**, 934–945 (2010).
 43. Palmer, C. & Traylor-Knowles, N. Towards an integrated network of coral immune mechanisms. *Proc. R. Soc. B: Biol. Sci.* **279**, 4106–4114 (2012).
 44. Palmer, C. V. et al. Patterns of coral ecological immunology: variation in the responses of Caribbean corals to elevated temperature and a pathogen elicitor. *J. Exp. Biol.* **214**, 4240–4249 (2011).
 45. Pinzón, J., Beach-Letendre, J., Weil, E. & Mydlarz, L. D. Relationship between phylogeny and immunity suggests older Caribbean coral lineages are more resistant to disease. *PLoS ONE* **9**, e104787 (2014).
 46. Van der Leek, A. P., Yanishevsky, Y. & Kozyrskyj, A. L. The kynurenine pathway as a novel link between allergy and the gut microbiome. *Front. Immunol.* **8**, 1374 (2017).
 47. Wikoff, W. R. et al. Metabolomics analysis reveals large effects of gut microflora on mammalian blood metabolites. *Proc. Natl Acad. Sci.* **106**, 3698–3703 (2009).
 48. Zaneveld, J. R., McMinds, R. & Thurber, R. V. Stress and stability: applying the Anna Karenina principle to animal microbiomes. *Nat. Microbiol.* **2**, 1–8 (2017).
 49. Pollock, F. J. et al. Coral-associated bacteria demonstrate phyllosymbiosis and cophylogeny. *Nat. Commun.* **9**, 4921 (2018).
 50. Sunagawa, S., Woodley, C. M. & Medina, M. Threatened corals provide underexplored microbial habitats. *PLoS ONE* **5**, e9554 (2010).
 51. Alexander, H., Jenkins, B. D., Rynearson, T. A. & Dyrhrman, S. T. Metatranscriptome analyses indicate resource partitioning between diatoms in the field. *Proc. Natl Acad. Sci.* **112**, E2182–E2190 (2015).
 52. Lundgren, P., Vera, J. C., Peplow, L., Manel, S. & van Oppen, M. J. Genotype - environment correlations in corals from the Great Barrier Reef. *BMC Genet* **14**, 9 (2013).
 53. Bay, R. A. & Palumbi, S. R. Multilocus adaptation associated with heat resistance in reef-building corals. *Curr. Biol.* **24**, 2952–2956 (2014).
 54. López-Maurty, L., Marguerat, S. & Bähler, J. Tuning gene expression to changing environments: from rapid responses to evolutionary adaptation. *Nat. Rev. Genet.* **9**, 583 (2008).
 55. Zamagni, J., Mutti, M. & Košir, A. The evolution of mid Paleocene-early Eocene coral communities: How to survive during rapid global warming. *Palaeogeogr., Palaeoclimatol., Palaeoecol.* **317**, 48–65 (2012).
 56. Rosado, P. M. et al. Marine probiotics: increasing coral resistance to bleaching through microbiome manipulation. *ISME J.* **13**, 921 (2019).
 57. Ziegler, M., Seneca, F. O., Yum, L. K., Palumbi, S. R. & Voolstra, C. R. Bacterial community dynamics are linked to patterns of coral heat tolerance. *Nat. Commun.* **8**, 14213 (2017).
 58. Ziegler, M. et al. Coral bacterial community structure responds to environmental change in a host-specific manner. *Nat. Commun.* **10**, 1–11 (2019).
 59. Gorbunov, M. Y., Kolber, Z. S., Lesser, M. P. & Falkowski, P. G. Photosynthesis and photoprotection in symbiotic corals. *Limnol. Oceanogr.* **46**, 75–85 (2001).
 60. Scheufen, T., Krämer, W. E., Iglesias-Prieto, R. & Enriquez, S. Seasonal variation modulates coral sensibility to heat-stress and explains annual changes in coral productivity. *Sci. Rep.* **7**, 4937 (2017).
 61. Vásquez-Elizondo, R. M. et al. Absorbance determinations on multicellular tissues. *Photosynth. Res.* **132**, 311–324 (2017).
 62. Enriquez, S., Méndez, E. R. & Iglesias-Prieto, R. Multiple scattering on coral skeletons enhances light absorption by symbiotic algae. *Limnol. Oceanogr.* **50**, 1025–1032 (2005).
 63. Shibata, K. Pigments and a UV-absorbing substance in corals and a blue-green alga living in the Great Barrier Reef. *Plant Cell Physiol.* **10**, 325–335 (1969).
 64. Kirk, J. T. *Light and Photosynthesis in Aquatic Ecosystems*. (Cambridge university press, 1994).
 65. Duxens, L. Energy transformations in photosynthesis. *Annu. Rev. plant Physiol.* **7**, 25–50 (1956).
 66. Bricaud, A. & Morel, A. Light attenuation and scattering by phytoplanktonic cells: a theoretical modeling. *Appl. Opt.* **25**, 571–580 (1986).
 67. Geider, R. & Osborne, B. Light absorption by a marine diatom: experimental observations and theoretical calculations of the package effect in a small *Thalassiosira* species. *Mar. Biol.* **96**, 299–308 (1987).
 68. Dubinsky, Z., Falkowski, P., Porter, J. & Muscatine, L. Absorption and utilization of radiant energy by light-and shade-adapted colonies of the hermatypic coral *Stylophora pistillata*. *Proc. R. Soc. Lond. Ser. B. Biol. Sci.* **222**, 203–214 (1984).
 69. Dubinsky, Z. et al. The effect of external nutrient resources on the optical properties and photosynthetic efficiency of *Stylophora pistillata*. *Proc. R. Soc. Lond. B. Biol. Sci.* **239**, 231–246 (1990).
 70. Lesser, M. P. L., Mazel, C., Phinney, D. & Yentsch, C. S. Light absorption and utilization by colonies of the congeneric hermatypic corals *Montastraea faveolata* and *Montastraea cavernosa*. *Limnol. Oceanogr.* **45**, 76–86 (2000).
 71. Bushnell, B. BBMap short read aligner. <http://sourceforge.net/projects/bbmap>.
 72. Haas, B. J. et al. De novo transcript sequence reconstruction from RNA-seq using the Trinity platform for reference generation and analysis. *Nat. Protoc.* **8**, 1494 (2013).
 73. Altschul, S. F. et al. Gapped BLAST and PSI-BLAST: a new generation of protein database search programs. *Nucleic acids Res.* **25**, 3389–3402 (1997).
 74. Putnam, N. H. et al. Sea anemone genome reveals ancestral eumetazoan gene repertoire and genomic organization. *Science* **317**, 86–94 (2007).
 75. Shinzato, C. et al. Using the *Acropora digitifera* genome to understand coral responses to environmental change. *Nature* **476**, 320–323 (2011).
 76. Baumgarten, S. et al. The genome of *Aiptasia*, a sea anemone model for coral symbiosis. *Proc. Natl Acad. Sci.* **112**, 11893–11898 (2015).
 77. Shoguchi, E. et al. Draft assembly of the *Symbiodinium minutum* nuclear genome reveals dinoflagellate gene structure. *Curr. Biol.* **23**, 1399–1408 (2013).
 78. Lin, S. et al. The *Symbiodinium kawagutii* genome illuminates dinoflagellate gene expression and coral symbiosis. *Science* **350**, 691–694 (2015).
 79. Aranda, M. et al. Genomes of coral dinoflagellate symbionts highlight evolutionary adaptations conducive to a symbiotic lifestyle. *Sci. Rep.* **6**, 39734 (2016).
 80. Parkinson, J. E. et al. Gene expression variation resolves species and individual strains among coral-associated dinoflagellates within the genus *Symbiodinium*. *Genome Biol. Evol.* **8**, 665–680 (2016).
 81. Buchfink, B., Xie, C. & Huson, D. H. Fast and sensitive protein alignment using DIAMOND. *Nat. methods* **12**, 59–60 (2015).
 82. Huson, D. H. et al. MEGAN community edition-interactive exploration and analysis of large-scale microbiome sequencing data. *PLoS Comput. Biol.* <https://doi.org/10.1371/journal.pcbi.1004957> (2016).
 83. Simão, F. A., Waterhouse, R. M., Ioannidis, P., Kriventseva, E. V. & Zdobnov, E. M. BUSCO: assessing genome assembly and annotation completeness with single-copy orthologs. *Bioinformatics* **31**, 3210–3212 (2015).
 84. Simpson, J. T. et al. ABySS: A parallel assembler for short read sequence data. *Genome Res.* **19**, 1117–1123 (2009).
 85. Bray, N. L., Pimentel, H., Melsted, P. & Pachter, L. Near-optimal probabilistic RNA-seq quantification. *Nat. Biotechnol.* **34**, 525–527 (2016).
 86. Love, M. I., Huber, W. & Anders, S. Moderated estimation of fold change and dispersion for RNA-seq data with DESeq2. *Genome Biol.* **15**, 550 (2014).
 87. Haas, B. & Papanicolaou, A. TransDecoder (find coding regions within transcripts). <https://github.com/TransDecoder/TransDecoder>.
 88. Huerta-Cepas, J. et al. eggNOG 5.0: a hierarchical, functionally and phylogenetically annotated orthology resource based on 5090 organisms and 2502 viruses. *Nucleic acids Res.* **47**, D309–D314 (2019).
 89. Huerta-Cepas, J. et al. Fast genome-wide functional annotation through orthology assignment by eggNOG-mapper. *Mol. Biol. evolution* **34**, 2115–2122 (2017).
 90. Wright, R. M., Aglyamova, G. V., Meyer, E. & Matz, M. V. Gene expression associated with white syndromes in a reef building coral, *Acropora hyacinthus*. *BMC genomics* **16**, 371 (2015).

91. Pochon, X., Pawlowski, J., Zaninetti, L. & Rowan, R. High genetic diversity and relative specificity among *Symbiodinium*-like endosymbiotic dinoflagellates in soritid foraminiferans. *Mar. Biol.* **139**, 1069–1078 (2001).
92. Andrews, S. FastQC: A Quality Control Tool for High Throughput Sequence Data. <http://www.bioinformatics.babraham.ac.uk/projects/fastqc/>.
93. Magoč, T. & Salzberg, S. L. FLASH: fast length adjustment of short reads to improve genome assemblies. *Bioinformatics* **27**, 2957–2963 (2011).
94. Edgar, R. C. Search and clustering orders of magnitude faster than BLAST. *Bioinformatics* **26**, 2460–2461 (2010).
95. Thornhill, D. J., Lewis, A. M., Wham, D. C. & LaJeunesse, T. C. Host-specialist lineages dominate the adaptive radiation of reef coral endosymbionts. *Evolution* **68**, 352–367 (2014).
96. Franklin, E. C., Stat, M., Pochon, X., Putnam, H. M. & Gates, R. D. GeoSymbio: a hybrid, cloud-based web application of global geospatial bioinformatics and ecoinformatics for *Symbiodinium*-host symbioses. *Mol. Ecol. Resour.* **12**, 369–373 (2012).
97. Parada, A. E., Needham, D. M. & Fuhrman, J. A. Every base matters: assessing small subunit rRNA primers for marine microbiomes with mock communities, time series and global field samples. *Environ. Microbiol.* **18**, 1403–1414 (2016).
98. Bolyen, E. et al. Reproducible, interactive, scalable and extensible microbiome data science using QIIME 2. *Nat. Biotechnol.* **37**, 852–857 (2019).
99. Callahan, B. J. et al. DADA2: high-resolution sample inference from Illumina amplicon data. *Nat. methods* **13**, 581–583 (2016).
100. McMurdie, P. J. & Holmes, S. phyloseq: an R package for reproducible interactive analysis and graphics of microbiome census data. *PLoS ONE* **8**, e61217 (2013).
101. Oksanen, J. et al. The vegan package. *Community Ecol.* **10**, 719 (2007).
102. Alexander, H. et al. Functional group-specific traits drive phytoplankton dynamics in the oligotrophic ocean. *Proc. Natl Acad. Sci.* **112**, E5972–E5979 (2015).
103. Dunn, C. W., Howison, M. & Zapata, F. Agalma: an automated phylogenomics workflow. *BMC Bioinform.* **14**, 330 (2013).

Acknowledgements

This work has been supported by the DOE Joint Genome Institute, CSP grant: 1622 to M.M., V.A.M., and R.I.P. And by NSF grants to M.M.: OCE 1442206 and IOS 0644438. In addition to funding from Pennsylvania State University startup funds to M.M. and the Canon Foundation grant to M.M., R.I.P., and H.K. V.A.M. was supported by CONACyT doctoral fellowship 216837, and the Pennsylvania State University, Biology Department Henry W. Popp Graduate Award. M.D.S. was supported by NSF OISE Dissertation Improvement. We thank Rosa Rodríguez-Martínez for providing *O. faveolata* field site bleaching records (GEF project, UNAM in Puerto Morelos). We would like to thank the UNM Center for Advanced Research Computing, supported in part by the National

Science Foundation, for providing some of the research computing resources used in this work.

Author contributions

V.A.M., M.D.S., H.K., and M.M. conceived the experiment. V.A.M. and M.M. outlined the manuscript. M.D.S. and R.I.P. executed the field and physiological experiments. V.A.M. analysed and interpreted the genomic and physiological data and drafted the manuscript. B.K. contributed to the genomic data, statistical analysis, and interpretation. K.G.C. and S.E. contributed to the physiological data interpretation. V.A.M., R.V.R., and B.K. contributed to the development of variations of the phylogenetic ANOVA. All authors contributed to the revision and writing of the paper.

Competing interests

The authors declare no competing interests.

Additional information

Supplementary information The online version contains supplementary material available at <https://doi.org/10.1038/s41467-021-25950-4>.

Correspondence and requests for materials should be addressed to Viridiana Avila-Magaña or Mónica Medina.

Peer review information *Nature Communications* thanks Oren Levy and the other 3 anonymous reviewer(s) for their contribution to the peer review of this work.

Reprints and permission information is available at <http://www.nature.com/reprints>

Publisher's note Springer Nature remains neutral with regard to jurisdictional claims in published maps and institutional affiliations.



Open Access This article is licensed under a Creative Commons Attribution 4.0 International License, which permits use, sharing, adaptation, distribution and reproduction in any medium or format, as long as you give appropriate credit to the original author(s) and the source, provide a link to the Creative Commons license, and indicate if changes were made. The images or other third party material in this article are included in the article's Creative Commons license, unless indicated otherwise in a credit line to the material. If material is not included in the article's Creative Commons license and your intended use is not permitted by statutory regulation or exceeds the permitted use, you will need to obtain permission directly from the copyright holder. To view a copy of this license, visit <http://creativecommons.org/licenses/by/4.0/>.

© The Author(s) 2021