

UC Davis

UC Davis Previously Published Works

Title

Seasonal variation in the canopy color of temperate evergreen conifer forests

Permalink

<https://escholarship.org/uc/item/1h98q1db>

Journal

New Phytologist, 229(5)

ISSN

0028-646X

Authors

Syednasrollah, Bijan

Bowling, David R

Cheng, Rui

et al.

Publication Date

2021-03-01

DOI






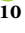


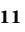

10.1111/nph.17046

Copyright Information

This work is made available under the terms of a Creative Commons Attribution License, available at <https://creativecommons.org/licenses/by/4.0/>

Peer reviewed

Seasonal variation in the canopy color of temperate evergreen conifer forests

Bijan Seyednasrollah^{1,2} , David R. Bowling³ , Rui Cheng^{4,5} , Barry A. Logan⁶ , Troy S. Magney⁷ , Christian Frankenberg^{4,5} , Julia C. Yang³ , Adam M. Young^{1,2} , Koen Hufkens^{8,9} , M. Altaf Arain¹⁰ , T. Andrew Black¹¹ , Peter D. Blanken¹² , Rosvel Bracho¹³ , Rachhpal Jassal¹¹ , David Y. Hollinger¹⁴ , Beverly E. Law¹⁵ , Zoran Nesic¹¹  and Andrew D. Richardson^{1,2} 

¹School of Informatics, Computing & Cyber Systems, Northern Arizona University, Flagstaff, AZ 86011, USA; ²Center for Ecosystem Science and Society, Northern Arizona University, Flagstaff, AZ 86011, USA; ³School of Biological Sciences, University of Utah, Salt Lake City, UT 84112, USA; ⁴Division of Geological and Planetary Sciences, California Institute of Technology, Pasadena, CA 91125, USA; ⁵Jet Propulsion Laboratory, California Institute of Technology, Pasadena, CA 91125, USA; ⁶Department of Biology, Bowdoin College, Brunswick, ME 04011, USA; ⁷Department of Plant Sciences, University of California Davis, Davis, CA 95616, USA; ⁸Computational & Applied Vegetation Ecology Lab, Ghent University, Ghent 9000, Belgium; ⁹INRA, UMR ISPA, Villenave d'Ornon 75011, France; ¹⁰School of Earth, Environment and Society and McMaster Center for Climate Change, McMaster University, Hamilton, ON L8S 4K1, Canada; ¹¹Faculty of Land and Food Systems, University of British Columbia, Vancouver, BC V6T 1Z4, Canada; ¹²Department of Geography, University of Colorado, Boulder, CO 80309, USA; ¹³School of Forest Resources and Conservation, University of Florida, Gainesville, FL 32611, USA; ¹⁴Northern Research Station, USDA Forest Service, Durham, NH 03824, USA; ¹⁵College of Forestry, Oregon State University, Corvallis, OR 97330, USA

Summary

Author for correspondence:
Bijan Seyednasrollah
Email: bijan.s.nasr@gmail.com

Received: 23 July 2020
Accepted: 13 October 2020

New Phytologist (2021) 229: 2586–2600
doi: 10.1111/nph.17046

Key words: AmeriFlux, evergreen conifer, PhenoCam, phenology, PRI, seasonality, xanthophyll.

- Evergreen conifer forests are the most prevalent land cover type in North America. Seasonal changes in the color of evergreen forest canopies have been documented with near-surface remote sensing, but the physiological mechanisms underlying these changes, and the implications for photosynthetic uptake, have not been fully elucidated.
- Here, we integrate on-the-ground phenological observations, leaf-level physiological measurements, near surface hyperspectral remote sensing and digital camera imagery, tower-based CO₂ flux measurements, and a predictive model to simulate seasonal canopy color dynamics.
- We show that seasonal changes in canopy color occur independently of new leaf production, but track changes in chlorophyll fluorescence, the photochemical reflectance index, and leaf pigmentation. We demonstrate that at winter-dormant sites, seasonal changes in canopy color can be used to predict the onset of canopy-level photosynthesis in spring, and its cessation in autumn. Finally, we parameterize a simple temperature-based model to predict the seasonal cycle of canopy greenness, and we show that the model successfully simulates inter-annual variation in the timing of changes in canopy color.
- These results provide mechanistic insight into the factors driving seasonal changes in evergreen canopy color and provide opportunities to monitor and model seasonal variation in photosynthetic activity using color-based vegetation indices.

Introduction

Evergreen conifer forests are the dominant land cover type across much of the mid-latitudes of North America (Pielou, 2011). These forests account for a substantial portion of continental-scale CO₂ uptake and carbon sequestration, influence water cycling and the ecohydrology of some of the continent's largest watersheds, and have major effects on land–atmosphere interactions that are relevant in the context of the global Earth system (Bonan, 2008). Therefore, they play a critical role in the response of the terrestrial biosphere to environmental change.

In cold climates, conifer forests are photosynthetically dormant during the winter months, despite maintaining foliage year-round (Hänninen, 2016). Downregulation of photosynthetic capacity occurs in response to shorter and cooler days in autumn (Hollinger *et al.*, 1999; Way & Montgomery, 2015; Gamon *et al.*, 2016; Bowling *et al.*, 2018). Likewise, upregulation of photosynthetic capacity is observed to occur in spring in response to increasing temperature (Tanja *et al.*, 2003; Richardson *et al.*, 2009b). However, incident solar radiation at temperate latitudes remains relatively high during winter, and thus the photosynthetic apparatus must be protected from excess absorbed energy to prevent damage (Demmig-Adams & Adams, 1996). Conifers

achieve winter photoprotection through thermal dissipation of excess absorbed excitation energy (Míguez *et al.*, 2015). As reviewed by Verhoeven (2014) and Ensminger *et al.* (2006), this appears to involve both rearrangement of the photosynthetic apparatus—with the light harvesting centers essentially being converted into ‘energy dissipating centers’—and upregulation of the xanthophyll cycle.

Conventional remote sensing indices, which are based on the red-edge transition between low visible-wavelength reflectance and high near infrared-wavelength reflectance (e.g. normalized difference vegetation index or NDVI; Tucker, 1979) typically fail to robustly detect seasonal changes in the carotenoid pigment pool (Magney *et al.*, 2019) or photosynthetic activity (Balzarolo *et al.*, 2016; Gamon *et al.*, 2016) in evergreen conifer forests. Intriguingly, visible-wavelength indices may offer improved potential for remote sensing of the seasonality of evergreen conifer photosynthesis (Wong & Gamon, 2015a). Gamon *et al.* (2016) presented a ‘chlorophyll/carotenoid index’ (CCI), calculated from bands 11 (531 nm) and 1 (645 nm) on NASA’s MODerate resolution Imaging Spectroradiometer (MODIS) satellite sensors. CCI performed better than NDVI at characterizing the seasonality of daily gross photosynthesis (or gross primary productivity, GPP, estimated from eddy covariance CO₂ flux measurements) across three evergreen sites.

Other studies have shown that visible-wavelength indices derived from digital camera (or ‘phenocam’; Richardson, 2019) imagery offer similar potential (Toomey *et al.*, 2015), although it is uncertain whether any single color-based index can robustly track seasonal changes in photosynthetic activity across different evergreen species mixtures, ecosystem types, or climate regimes. Richardson *et al.* (2009a) reported that a ‘green excess’ index mimicked the seasonal pattern of GPP at the conifer-dominated Howland Forest. Results from the Niwot Ridge subalpine forest (Colorado, USA) suggested that seasonal variation in the light-saturated rate of canopy photosynthesis, a proxy for photosynthetic capacity, was better correlated ($r = 0.92$ vs $r = 0.76$, respectively) with an index known as the green chromatic coordinate (G_{cc}) than with the green–red vegetation index (GRVI), an approximation to CCI (Bowling *et al.*, 2018). Most recently, Liu *et al.* (2020), reported that start-of season (SOS) and end-of-season (EOS) transition dates derived from the red chromatic coordinate (R_{cc}) better predicted seasonal transitions in evergreen conifer photosynthesis than transition dates derived from G_{cc} . However, the seasonal trajectory of R_{cc} did not itself align with the seasonal trajectory of GPP, and day-to-day variation in R_{cc} was much higher than G_{cc} . On top of uncertainties about which is the best index to use, mechanistic studies to understand the underlying physiological basis for the observed seasonal variation in canopy color have been lacking.

Upregulation of photosynthetic capacity in spring has been modeled as a function of air temperature (Tanja *et al.*, 2003; Richardson *et al.*, 2009b, 2019), and observational studies point to temperature as the key factor driving concurrent seasonal changes in evergreen conifer canopy color and photosynthesis (e.g. Bowling *et al.*, 2018). Experimental warming has been shown to advance spring ‘green-up’ transition dates, and delay

autumn ‘green-down’ transition dates (both derived from G_{cc}) for mature black spruce trees (Richardson *et al.*, 2018b). To date, the potential to model the seasonal trajectory of evergreen conifer canopy color as a function of temperature has not yet been investigated.

Here, using data from evergreen conifer sites across the PhenoCam Network, we explore the relationships between seasonal variation in canopy color and photosynthetic activity. We begin by using leaf-level field data from three winter-dormant sites (Howland Forest, Harvard Forest, and Niwot Ridge) to investigate the physiological mechanisms associated with seasonal changes in canopy color. Next, using data from 11 sites in the AmeriFlux and FLUXNET-Canada networks, we conduct an analysis that links seasonal variation in G_{cc} and GRVI to the seasonality of GPP at the seven sites that are winter-dormant. Finally, using a multi-year time series of G_{cc} from 26 evergreen PhenoCam sites, we parameterize and test a temperature-based model that simulates the seasonal trajectory of G_{cc} , from winter dormancy to the summertime peak in activity and back to winter dormancy.

Materials and Methods

PhenoCam data

The PhenoCam Network uses digital repeat photography to track seasonal changes in canopy color at over 600 sites across North America and around the world (Richardson, 2019). Over 100 sites in the network include evergreen conifer vegetation, and the most recent curated PhenoCam data release (v.2; Seyednasrollah *et al.*, 2019b) includes 265 site-years of data for evergreen conifer sites. The PhenoCam processing workflow is fully described in previous publications (Richardson *et al.*, 2018a; Seyednasrollah *et al.*, 2019a); we summarize the key steps here.

Imagery used in the current study was obtained from cameras (NetCam SC IR; StarDot Technologies, Buena Park, CA, USA) deployed (see <http://phenocam.sr.unh.edu/>) and configured (<https://khufkens.github.io/phenocam-installation-tool/>) using a common protocol. Images were recorded from 04:00 to 22:00 (local time; images captured when the sun was less than 5° above the horizon were excluded), uploaded to the PhenoCam server, and processed to yield quantitative information about canopy color for a predefined region of interest (ROI) corresponding to the vegetation under study. We used only ROIs specific to evergreen needleleaf (EN) vegetation, while excluding exposed ground and other vegetation types, in this analysis.

For each image, the mean intensity (across the ROI) of the red, green, and blue (RGB) color channels was determined, and from these 8-bit digital numbers (R_{DN} , G_{DN} , B_{DN}) we calculated the G_{cc} and GRVI (Richardson *et al.*, 2013b; Bowling *et al.*, 2018) as:

$$G_{cc} = \frac{G_{DN}}{R_{DN} + G_{DN} + B_{DN}} \quad \text{Eqn 1}$$

$$\text{GRVI} = \frac{G_{\text{DN}} - R_{\text{DN}}}{G_{\text{DN}} + R_{\text{DN}}} \quad \text{Eqn 2}$$

Following Richardson *et al.* (2018b), we visually inspected the imagery from each camera, and identified days on which the canopy was at least partially obscured by snow at midday. These days were excluded from analysis. To further minimize the effects of variation in lighting conditions (e.g. clouds, aerosols, and illumination geometry), we aggregated data from multiple images recorded each day to composite products at a 1- and 3-d time step using the quantile-based approach described by Sonnentag *et al.* (2012). We then used a LOESS-based method to smooth the G_{cc} and GRVI time series, identify outliers, and extracted seasonal transition dates based on predefined thresholds (10%, 25%, and 50%) of the seasonal amplitude (Richardson *et al.*, 2018a; Seyednasrollah *et al.*, 2019a).

All PhenoCam data used here (Fig. 1) are publicly available from the PhenoCam dataset v.2.0 (Seyednasrollah *et al.*, 2019a) which is available for download from the ORNL DAAC (Seyednasrollah *et al.*, 2019b).

Leaf-level observations and measurements

Howland Forest The Howland Forest site (US-Ho1, 45.2°N, 68.7°W, elevation 60 m above sea level (asl) is located in a boreal-northern hardwood transition forest about 50 km north of Bangor, ME, USA. Forest composition is dominated by the evergreen conifers, red spruce (*Picea rubens* Sarg., 44% of basal area) and eastern hemlock (*Tsuga canadensis* (L.) Carrière, 26% of basal area). Mean annual temperature (MAT) is 5.3°C and mean annual precipitation (MAP) is 1070 mm. Phenological observations (budburst) have been conducted at Howland Forest since 1990 and are ongoing. The mean aggregate date of budburst by the dominant coniferous species was estimated from visual observations made during weekly or twice-weekly site visits (Richardson *et al.*, 2009b). A phenocam was installed at Howland in 2007.

Harvard Forest The Harvard Forest (US-Ha1, 42.5°N, 72.2°W, elevation 340 m asl) is a mixed temperate forest about 110 km west of Boston, MA, USA. Forest composition is dominated by the deciduous species red oak (*Quercus rubra* L., 36% of basal area) and red maple (*Acer rubrum* L., 22% of basal area), although mixed and pure stands of evergreen conifer species are found throughout the forest, for example eastern hemlock (13% of basal area) and white pine (*Pinus strobus* L., 6% of basal area). MAT is 6.6°C and MAP is 1070 mm. Field observations of phenology have been conducted at Harvard Forest since 1990 (Richardson & O'Keefe, 2009) and are ongoing, although observations of budburst for both white pine and eastern hemlock were discontinued in 2001. Phenocams were installed on the Hemlock tower (forest dominated by eastern hemlock) in 2010 and the Barn tower (mixed forest dominated by red oak and white pine) in 2011.

Leaf-level physiological studies of white pine and eastern hemlock were initiated at Harvard Forest in mid-winter 2015 and

continued through late-winter 2016. Needle samples were collected from three trees of each species in the vicinity of the Hemlock and Barn towers, monthly during the dormant season and every 2 weeks during spring and autumn. The chlorophyll fluorescence ratio F_v/F_m was measured using a hand-held Optisciences OS-30p fluorometer (Opti-Sciences, Hudson, NH, USA) on needles ($n = 20$) that had been dark acclimated for a minimum of 15 min. Spectral reflectance (350–2500 nm) was measured using a FieldSpec 3 portable spectrometer (Analytical Spectral Devices, Boulder, CO, USA). The spectrometer was connected to a needle leaf clip (PP Systems, Amesbury, MA, USA), with illumination provided by a quartz tungsten halogen light source (Thorlabs SLS201L), referenced to a white Spectralon (Labsphere, North Sutton, NH, USA) standard. We calculated the photochemical reflectance index (PRI; Gamon *et al.*, 1992, 1997) using reflectance at 531 and 570 nm (ρ_{531} and ρ_{570} , respectively) as:

$$\text{PRI} = \frac{\rho_{531} - \rho_{570}}{\rho_{531} + \rho_{570}} \quad \text{Eqn 3}$$

Niwot Ridge The subalpine Niwot Ridge site (US-NR1, 40.0°N, 105.6°W, elevation 3050 m asl) is located about 25 km west of Boulder, CO, USA. Forest composition is dominated by the evergreen conifer species: subalpine fir (*Abies lasiocarpa* (Hook.) Nutt., 46% stem density), Engelmann spruce (*Picea engelmannii* Parry ex Engelm., 28% stem density), and lodgepole pine (*Pinus contorta* Dougl. ex. Loud., 26% stem density). MAT is 1.5°C and MAP is 800 mm, of which 65% typically falls as snow. A phenocam was first installed at Niwot Ridge in 2009.

We used leaf pigment data from Magney *et al.* (2019) to investigate relationships between changes in canopy color and leaf-level pigment pools and ratios. Approximately monthly from June 2017 to June 2018, samples were collected from two lodgepole pine and three Engelmann spruce trees growing in close proximity to the tower, and flash-frozen in liquid nitrogen. Pigments were extracted in acetone and analyzed by high-performance liquid chromatography (HPLC; Bowling *et al.*, 2018). Pigments measured included Chl a and Chl b , violaxanthin (V), antheraxanthin (A), zeaxanthin (Z), neoxanthin, lutein, and α - and β -carotene.

Three of the trees sampled for pigments (two lodgepole pines and one Engelmann spruce) were in the field of view of the *niwot5* phenocam. We developed custom ROI masks and extracted canopy color information for each tree on the day on which pigment sampling occurred. We used these data to assess the linear correlations between color indices (G_{cc} and GRVI) and pigment contents (total chlorophyll, total carotenoids, and total xanthophyll cycle pigments), their ratios (chl : car, chl : xan), and xanthophyll cycle epoxidation state ($[(Z + A)/(V + Z + A)]$).

For further insight into relationships between pigments and seasonal changes in canopy color, we used hyperspectral reflectance measured from a two-dimensional (2D) scanning

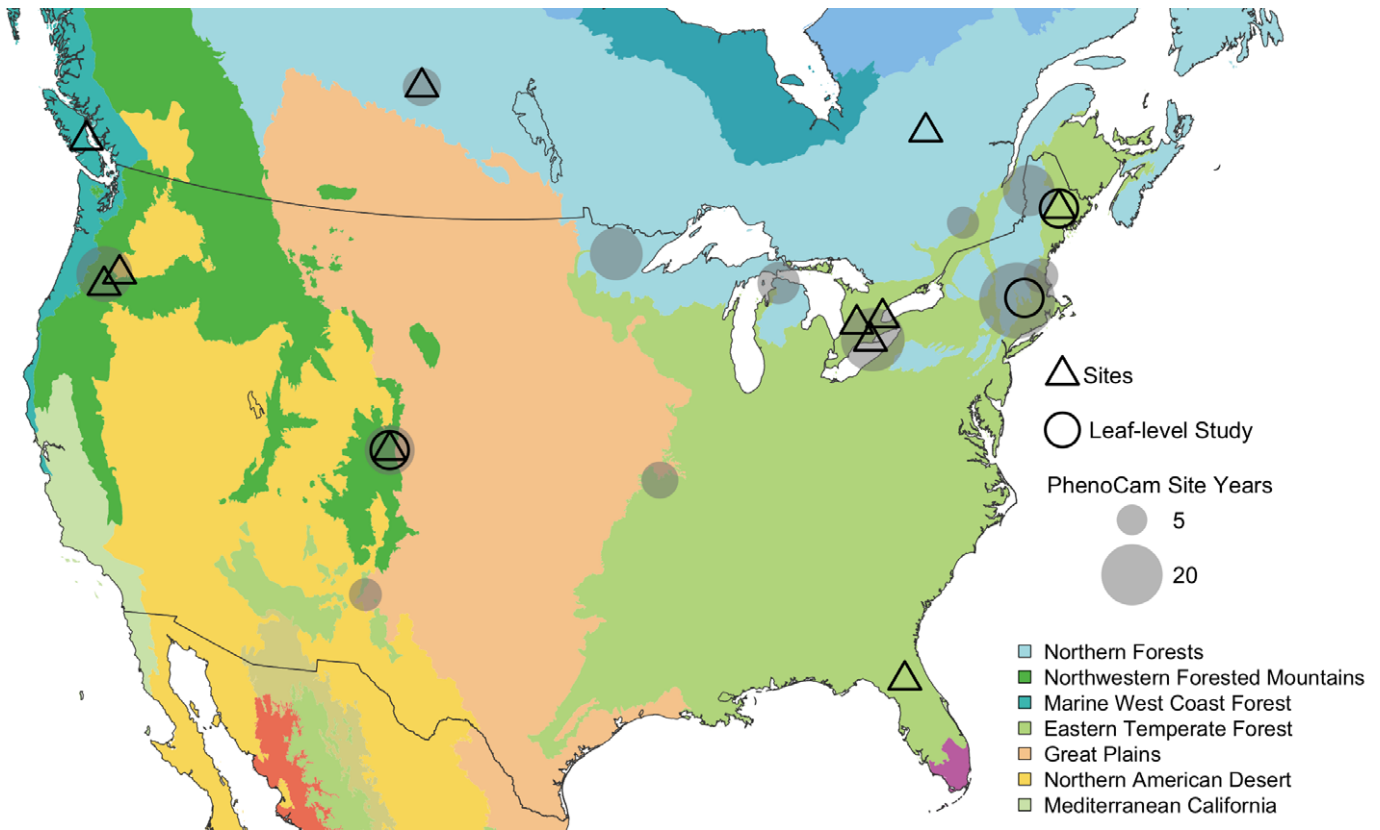


Fig. 1 Distribution of the study sites used in the present analysis. PhenoCam site-year counts, used in the modeling analysis, are aggregated to $1^\circ \times 1^\circ$ grids.

telescope, PhotoSpec (Grossmann *et al.*, 2018), mounted on top of the Niwot Ridge AmeriFlux tower (Cheng *et al.*, 2020). PhotoSpec measures canopy reflectance (ρ_λ) from 400 nm to 900 nm (1.2 nm full-width-half-maximum) with a Flame-S spectrometer (Ocean Optics Inc., Dunedin, FL, USA). The field of view of PhotoSpec is 0.7° . The narrow field of view allowed us to point the instrument at the individual trees that were sampled for pigment analysis. From the PhotoSpec data, we calculated a full suite of normalized difference reflectance indices (NDIs), using all possible combinations for ρ_{λ_1} and ρ_{λ_2} , as in Eqn 4.

$$\text{NDI}(\lambda_1, \lambda_2) = \frac{\rho_{\lambda_1} - \rho_{\lambda_2}}{\rho_{\lambda_1} + \rho_{\lambda_2}} \quad \text{Eqn 4}$$

Eddy covariance measurements of forest–atmosphere exchange

To place seasonal changes in canopy color in the context of the seasonality of canopy photosynthesis, we used tower-based eddy covariance measurements of forest–atmosphere CO_2 fluxes (Balocchi, 2008). We identified 11 evergreen sites in North America that had multiple years of flux data with overlapping PhenoCam data (Supporting Information Table S1). The eddy covariance measurements (net ecosystem exchange (NEE) of CO_2 , in μmol

$\text{m}^{-2} \text{s}^{-1}$) were obtained from the AmeriFlux (sites: US-Ho1, US-NR1, US-Me2, US-Me6, CA-TP1, CA-TP3, CA-TP4, and CA-Obs) and FLUXNET2015 (CA-Qfo) archives, or directly from site PI (Ca-Obs (most recent data), Ca-Ca3, and US-SP1).

Our workflow for processing the CO_2 flux measurements is illustrated in Fig. S1. The flux data were evaluated to determine an appropriate friction velocity threshold (u^*) to remove periods of low turbulence, and flux and meteorological data were then gap-filled using the REDDYPROC package in R (Wutzler *et al.*, 2018).

Gross primary productivity (GPP) was derived following Hollinger *et al.* (2004) by first estimating ecosystem respiration (R_{eco}) from the average nighttime NEE over a moving 5-d window, and then subtracting R_{eco} from NEE. The light response of GPP was characterized using a Michaelis–Menten approach (Eqn 5):

$$\text{GPP} = A_{\text{max}} \times \text{PPFD} / (K_m + \text{PPFD}) \quad \text{Eqn 5}$$

where PPFD is photosynthetic photon flux density (in $\mu\text{mol} \text{m}^{-2} \text{s}^{-1}$), A_{max} is the theoretical maximum rate of photosynthesis, and K_m is the half-saturation constant; A_{max} and K_m were fit parameters. The canopy-level photosynthetic capacity index (Bowling *et al.*, 2018), GPP_{sat} , was calculated by evaluating the fit to Eqn 5 within each moving window, assuming full-sun conditions ($\text{PPFD} = 2000 \mu\text{mol} \text{m}^{-2} \text{s}^{-1}$).

The GPP_{sat} time series were used to determine the start and end of the photosynthetically active season (SOS and EOS, respectively, see Fig. S1). For each year, the time series of daily GPP_{sat} was smoothed with a LOESS filter, from which the annual maximum GPP_{sat} was determined. At winter dormant sites, the annual minimum of GPP_{sat} was zero (Fig. S1). Similar to how transition dates were determined from PhenoCam data, the GPP-based SOS transition dates were determined as the day that the smoothed GPP_{sat} crossed the thresholds of 10, 25 and 50% (SOS10, SOS25, and SOS50) of the annual maximum GPP_{sat} . EOS transition dates were similarly determined during the decrease of GPP_{sat} in autumn. Uncertainties on these transition dates were estimated by bootstrapping.

We evaluated the agreement between PhenoCam-based transition dates and GPP-based transition dates using Type II regression and correlation analysis. Because there are various ways to statistically aggregate (e.g. mean, median, 75th and 90th quantile) the G_{cc} and GRVI data from multiple images to a single 3-d index value, and then to extract SOS and EOS transition dates from 3-d data using different thresholds (10%, 25%, and 50%) of the seasonal amplitude (Richardson *et al.*, 2018a), we evaluated all 12 possible combinations of these approaches for both G_{cc} and GRVI (Table S3, see later). We report results here for only one method each for G_{cc} and GRVI. We selected the ‘best’ method by identifying, for each index, the method that had the highest aggregate correlation (sum of SOS and EOS PhenoCam–GPP correlation coefficients) across all site-years of data. For G_{cc} , 3-d values were calculated as the 90th quantile of the index, calculated across all daytime images, and transition dates were determined based on the 25% threshold of the seasonal amplitude. For GRVI, 3-d values were calculated as the mean value of the index, across all daytime images, and transition dates were determined based on the 50% threshold of the seasonal amplitude.

Modeling the seasonal trajectory of canopy color

We developed a temperature-driven model to simulate the seasonal trajectory of canopy greenness (cf. directly modeling SOS and EOS transition dates, e.g. Melaas *et al.*, 2016; Richardson *et al.*, 2019b), whereby day-to-day changes in greenness are driven by the preceding day’s maximum (spring) or minimum (autumn) air temperature. The model was inspired by formulations previously presented to simulate the seasonality of developmental processes (Hänninen & Kramer, 2007; Hänninen, 2016), and seasonal upregulation and downregulation of photosynthetic capacity (Richardson *et al.*, 2010b) of winter-dormant conifers. Our Bayesian framework (Eqns 6–8) accommodates missing data and uncertainty in the observations, which makes it powerful for statistical inference from phenological time series.

$$G_{\text{cc},s,t} \sim N(\gamma_{s,t}, \sigma^2) \quad \text{Eqn 6}$$

$$\gamma_{s,t} = \min(\max(\gamma_{s,t-1} + \Delta\gamma_{s,t}, \gamma_{s,\text{min}}), \gamma_{s,\text{max}}) \quad \text{Eqn 7}$$

$$\Delta\gamma_{s,t} = \begin{cases} \max(T_{\text{max},s,t} - \theta_{s,1}, 0) \cdot \rho_{s,1} & t < D \\ \min(T_{\text{min},s,t} - \theta_{s,2}, 0) \cdot \rho_{s,2} & t \geq D \end{cases} \quad \text{Eqn 8}$$

Briefly, canopy greenness, G_{cc} (Eqn 6), for site s at time t is assumed to be distributed by a Gaussian distribution (N) with mean $\gamma_{s,t}$ and variance σ^2 . The state variable, $\gamma_{s,t}$ (Eqn 7), tracks daily changes in G_{cc} and is constrained to fall within the range defined by $\gamma_{s,\text{min}}$ and $\gamma_{s,\text{max}}$, which are estimated parameters. The daily change in that state variable, $\Delta\gamma_{s,t}$ (Eqn 8), is prescribed as a function of air temperature. In spring, the increase in G_{cc} occurs as the product of the daily T_{max} above the threshold temperature $\theta_{s,1}$, multiplied by the temperature sensitivity factor, $\rho_{s,1}$. In autumn, the decrease in G_{cc} occurs as the product of the daily T_{min} below the threshold temperature $\theta_{s,2}$, multiplied by the temperature sensitivity factor, $\rho_{s,2}$. The timing of the transition from the spring phenology phase to the autumn phenology phase is determined by the parameter D , which is specified as a day of year.

The posterior distributions of the model parameters ($\theta_{s,1}$, $\theta_{s,2}$, $\rho_{s,1}$, $\rho_{s,2}$ and D) were fitted on a site-by-site basis for 26 evergreen conifer PhenoCam sites in North America (Table S2). We selected evergreen conifer sites with more than 4 yr of data in the PhenoCam data set v.2.0 (Seyednasrollah *et al.*, 2019a) and where the seasonal signal-to-noise ratio was at least 20 : 1. We quantified ‘signal’ as the seasonal amplitude of G_{cc} , and ‘noise’ as the mean absolute difference in G_{cc} across successive days (over which time phenological change is expected to be small). Daily minimum and maximum temperature data were obtained from Daymet (Thornton *et al.*, 2016). A Gibbs sampling method (‘RJAGS’ package in R 4.0; Plummer, 2013) was used to fit the posterior distributions. For cross-validation of an n -year time series, the first $n - 1$ year were used for model calibration parameters (see Fig. S2), and the final year of data was used for out-of-sample validation. To evaluate the ability of the model to capture interannual variation in the timing of phenological shifts, SOS and EOS transition dates were estimated from the model as 50% of the seasonal amplitude of simulated G_{cc} and compared against the 50% seasonal amplitude transition dates described in section entitled ‘PhenoCam data’.

Results

Leaf-level observations

Howland Forest At Howland Forest, the time series of G_{cc} and GRVI showed strong seasonality in canopy color, with both color indices following approximately sinusoidal patterns, reaching a minimum in winter and a maximum in summer (Fig. 2). On days with snow on the canopy (open symbols), G_{cc} was shifted downward by a relatively small amount relative to G_{cc} measured on days without snow on the canopy (blue symbols). By comparison, when there was snow on the canopy, GRVI was shifted upward to levels that were more similar to summer values. Filtering data for snow on canopy is therefore important for G_{cc} but critical for GRVI. Even when there was no snow on the canopy,

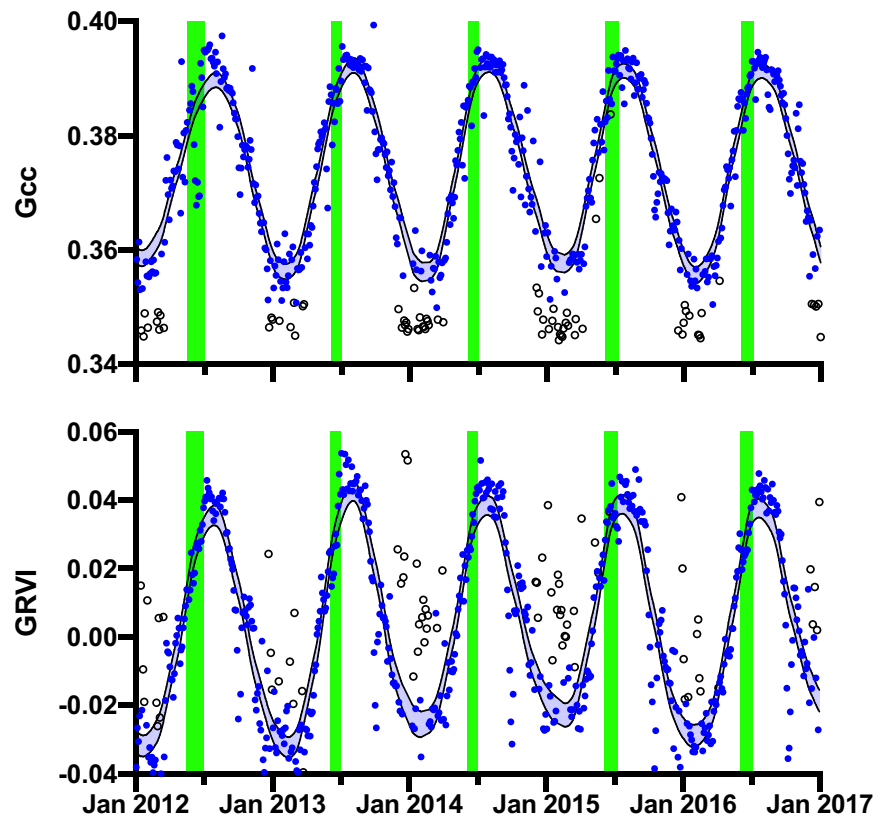


Fig. 2 Seasonality of canopy color, as characterized by the green chromatic coordinate (G_{cc} , upper panel) and green–red vegetation index (GRVI, lower panel), from PhenoCam imagery for Howland Forest. Filled blue symbols indicate 3-d composite values from high-frequency imagery; hollow symbols are data that have been screened because of snow on the evergreen canopy. Shaded blue bands indicate LOESS smoothing spline fit to the snow-filtered data, \pm 95% confidence interval. Vertical green bars indicate the period between conifer budburst and completion of leaf development, based on on-the-ground surveys conducted each spring since 1990.

GRVI appeared to be more variable, day-to-day, than G_{cc} , with some obvious outliers. There was less year-to-year variation in the winter minimum of G_{cc} than GRVI, but overall the two time series were well correlated ($r = 0.89$).

The data indicate that the onset of increases in G_{cc} and GRVI occurred independently of the production of new foliage, as determined by on-the-ground phenological surveys (Fig. 2). Notably the date of budburst by the dominant conifer species, red spruce and eastern hemlock, occurs after the point when more than half of the annual seasonal amplitude of these indices has already been reached.

Harvard Forest At Harvard Forest, leaf-level measurements on white pine and eastern hemlock showed strong seasonal patterns in two key physiological indices, chlorophyll fluorescence, F_v/F_m , and the PRI (Fig. 3). The value of F_v/F_m indicates that leaf-level changes in the quantum efficiency of photosystem II (PS II; Bolh ar-Nordenkamp *et al.*, 1989) occurred in parallel with changes in G_{cc} over the course of the year. PRI suggests that the changes in G_{cc} were associated with variation in the chl : car ratio (Garbulsky *et al.*, 2011). As was the case at Howland Forest (Fig. 2), increases in G_{cc} (normalized in Fig. 3c to account for the differences in winter baseline and summer maxima between the two species) began many weeks before the production of new foliage occurred in June.

Niwot Ridge At Niwot Ridge, our analysis of the temporal patterns in leaf pigments highlights the strong relationship between canopy color and leaf-level pigment pools and ratios. First, the

seasonal patterns in both color indices (G_{cc} and GRVI) and pigment data were highly consistent across the three trees (Fig. 4; two lodgepole pines: P1 and P2, and one Engelmann spruce: S1) in the field of view of the *niwot5* phenocam, with one exception: chlorophyll content did not vary across individuals, or over time. This is consistent with results presented by Bowling *et al.* (2018) using data from a previous year.

Second, the seasonal patterns of variation in G_{cc} correlated best with those for the chl : xan ratio, while GRVI correlated best with the chl : car ratio (Fig. 5). These results show clear covariation on seasonal timescales between leaf-level pigments and canopy color as quantified from phenocam imagery.

We complement the earlier analysis of broad-band changes in canopy color with a more detailed analysis using hyperspectral vegetation reflectance data (Fig. 6). Across all wavelength combinations, we found $\lambda_1 \sim 530$ nm (green) and $\lambda_2 \sim 690$ nm (red) resulted in high correlation ($r > 0.95$) between a two-wavelength NDI and the chl : car ratio, highlighting the importance of seasonal changes in leaf pigment content as a likely mechanism driving changes in spectral reflectance, and the potential to detect these changes with color-based indices (specifically GRVI, given the optimal bands for λ_1 and λ_2) retrieved from camera imagery. There were a number of narrowly-defined spectral ranges (e.g. for any λ_2 , $500 < \lambda_1 < 550$ nm and $675 < \lambda_1 < 700$ nm, and also $700 < \lambda_2 < 725$ nm when $525 < \lambda_1 < 650$) where correlations with chl : car were high. We further note that for any value of λ_2 when $\lambda_1 < 500$ nm, correlation of NDI with chl : car was not as strong as with the green–red band combinations.

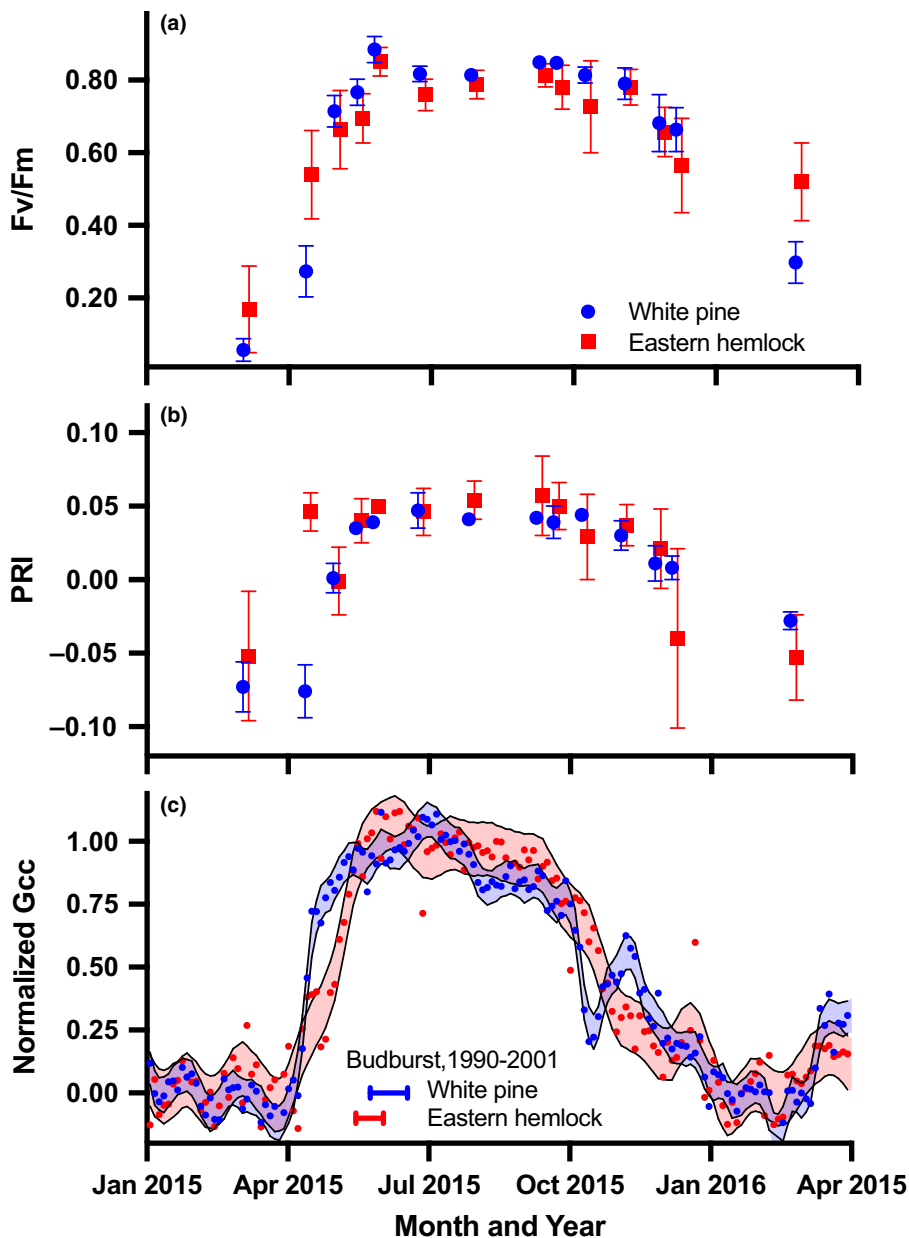


Fig. 3 Seasonal variation in leaf-level physiological measurements for white pine and eastern hemlock at Harvard Forest. (a) Chlorophyll fluorescence F_v/F_m ; (b) the photochemical reflectance index, PRI; (c) the green chromatic coordinate (G_{cc}), normalized by observed seasonal maxima and minima to fall within the range 0–1. In (c), the horizontal bars indicate the mean dates of budburst (production of new foliage) for each species, over the period 1990–2001 (ground observations were discontinued before the start of the present study). The errors bars in (a) and (b) show the SD of the observations.

Links between seasonal changes in canopy color and photosynthetic capacity

SOS and EOS transition dates derived from G_{cc} and GRVI were generally aligned with the corresponding dates indicating the start and end of photosynthetic activity, as estimated from GPP (Fig. 7). But there were obvious outliers to these relationships at sites which were not fully winter dormant; although photosynthetic capacity does decline in winter at the warm sites, it does not shut down completely, and thus the concept of SOS and EOS dates is not applicable (even though seasonal variation in canopy color was observed even at the warmest site, US-SP1). Our analysis is therefore restricted to the remaining seven winter-dormant sites, which ranged across 14° in latitude, 37° in

longitude, and more than 8°C in MAT. SOS and EOS transition dates varied by more than 2 months across site-years ($n = 38$ and $n = 34$, respectively).

As described in the Methods section, we found that many different calculations could provide PhenoCam-based transition dates that were well-correlated with GPP-based transition dates, although some methods were superior (Table S3). The best methods resulted in transition dates for both G_{cc} and GRVI that were well-correlated with GPP-based dates for both SOS ($r = 0.70$ and $r = 0.69$, respectively) and EOS ($r = 0.73$ and $r = 0.74$) (Fig. 7). However, the root-mean-square error (RMSE) for G_{cc} SOS (6 d) was substantially smaller than for G_{cc} EOS (11 d), and for either GRVI SOS (10 d) or EOS (11 d).

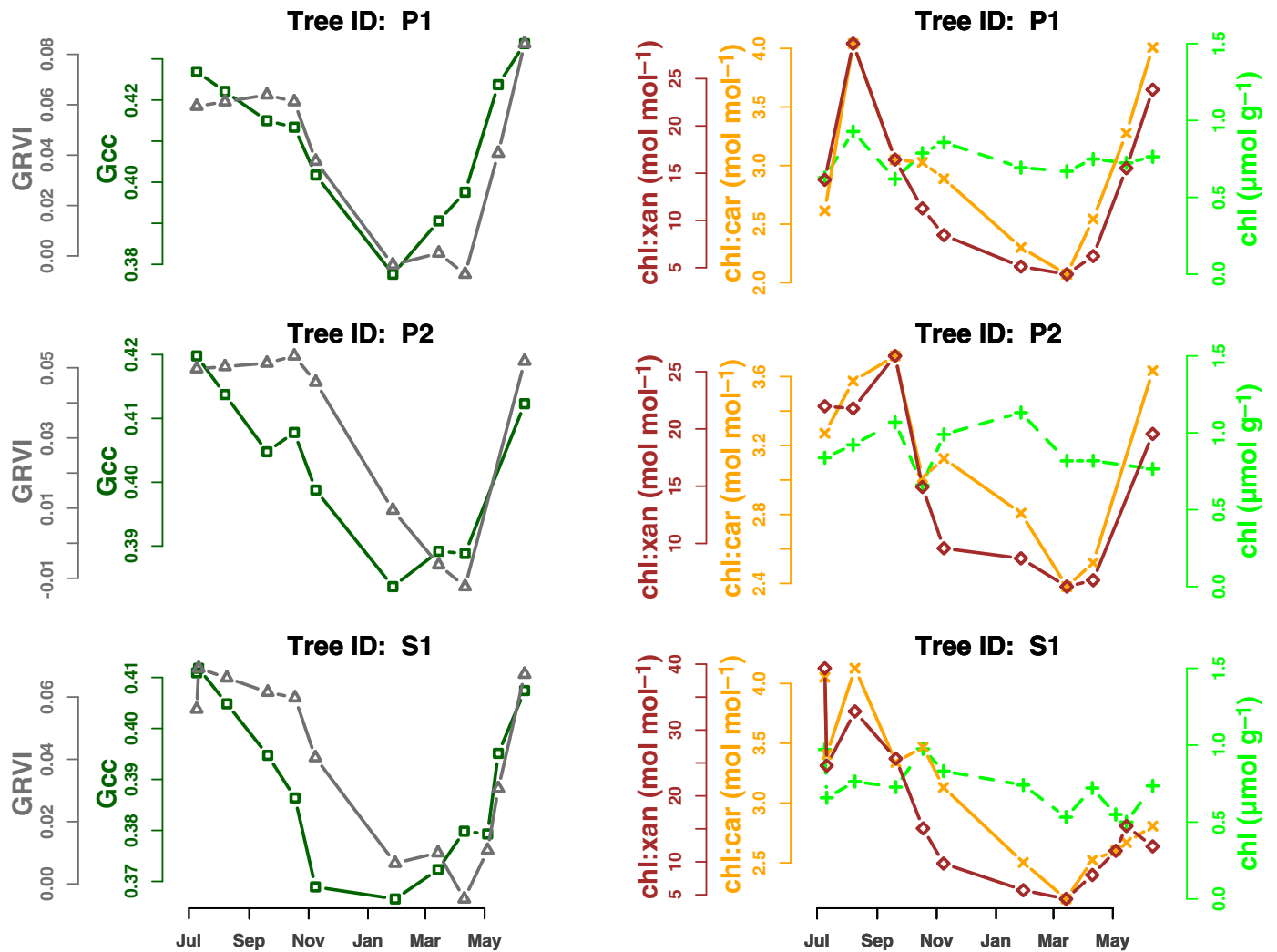


Fig. 4 Seasonal patterns in phenocam-derived canopy color indices (G_{cc} and GRVI), and pigment contents and ratios, for three trees (two lodgepole pine: P1 and P2, and one Engelmann spruce: S1) in the field of view of the niwot5 phenocam. For additional pigment content (total carotenoids and total xanthophylls) data, see Supporting Information Fig. S3.

Temperature-based modeling of evergreen phenology

Our temperature-based phenology model performed well, in that it was able to reproduce both the seasonal trajectory of canopy color and transition dates for in-sample data, as well as out-of-sample data (Fig. 8).

Despite the large climatological range, and differences in species composition across sites, the model consistently replicated the seasonal patterns of G_{cc} and successfully predicted the year held out for cross-validation at each site. For example, US-Mpj is a semi-arid pinyon-juniper forest in New Mexico, USA while CA-Obs is a boreal spruce forest in Saskatchewan, Canada. The two contrasting sites exhibited distinct trends in their seasonal change of canopy color (Fig. S2). The seasonal amplitude of greenness at CA-Obs was more than twice as much as that at US-Mpj, and green-up and green-down occurred at a faster rate at CA-Obs than at US-Mpj. The model performed almost equally well at both sites (Fig. S2).

Our temperature-based model closely tracked the timing and the rate of changes in greenness for all site-years. The values of R^2 for calibration data (82% of the data) and validation data (18% of the data) were 0.94 and 0.89, respectively (Fig. 8). The spring and autumn transition dates extracted from the modeled time series also matched well with the transition dates derived from the G_{cc} time series. The median absolute error was 6 d for both spring and autumn transition dates when we used the calibration data. For the validation data, the median absolute errors were 6 and 9 d for spring and autumn transition dates, respectively. Model parameters were generally similar across different species and climate regimes (see Table S4). More specifically, G_{min} , G_{max} and D showed small variability across sites. The spring threshold temperature (θ_1) expressed higher variability than the autumn threshold temperature (θ_2), but the variability of temperature sensitivity coefficient of spring (ρ_1) was larger than that of autumn (ρ_2). Overall, the model parameters did not vary in relation to climate (MAT or MAP) or site location (latitude,

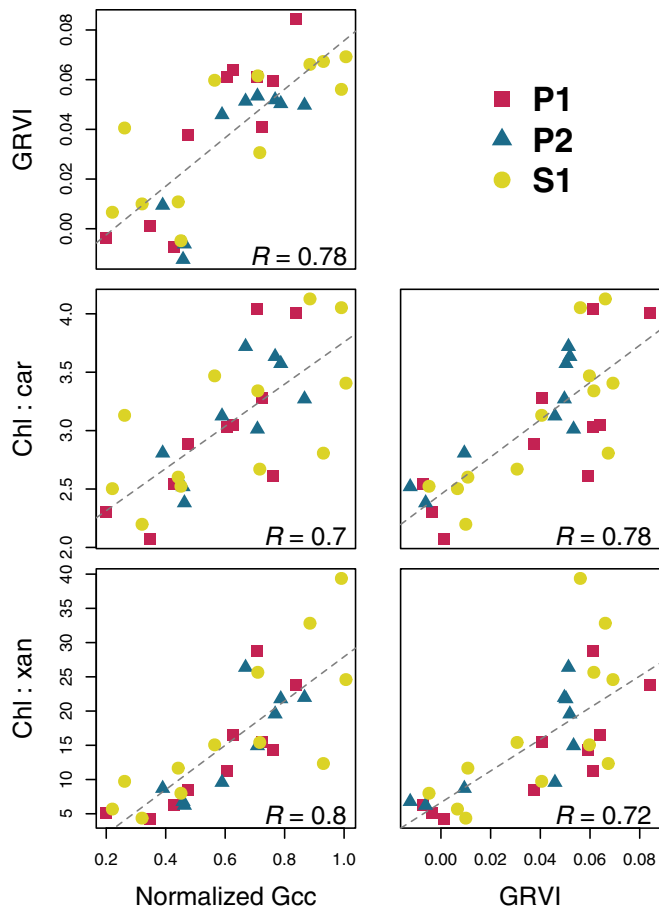


Fig. 5 Correlation of canopy color indices and pigment ratio data for Niwot Ridge. Data are plotted using different symbols for each of the three trees (two lodgepole pine: P1 and P2, and one Engelmann spruce: S1) within the *nivot5* phenocam field of view. Rather than presenting the full correlation matrix (see Supporting Information Fig. S3), here we show only the strongest correlations. To account for the different seasonal maxima and minima of green chromatic coordinate (G_{cc}) across different trees, the values were normalized.

longitude, elevation) factors, but as the PhenoCam data archive grows, it may be possible to identify biogeographic patterns in model parameters.

Discussion

Our study shows that changes in evergreen conifer canopy color that occur on seasonal timescales are associated with variation in leaf pigment ratios. Furthermore, our results show that changes in canopy color can be detected from digital camera imagery, and SOS and EOS transition dates derived from canopy color metrics align with corresponding dates representing the start and end of photosynthetic activity in winter-dormant ecosystems (Gamon *et al.*, 2016; Wong *et al.*, 2020). Finally, the seasonal trajectory of changes in canopy color can be simulated with a temperature-based model which likewise successfully reproduces the timing of SOS and EOS transition dates across a wide range of evergreen ecosystems. Our work builds on previous studies (Richardson *et al.*, 2009a; Toomey *et al.*, 2015;

Bowling *et al.*, 2018; Liu *et al.*, 2020) by providing new insight into the underlying mechanisms and drivers of the observed relationship between canopy color and photosynthesis, and highlighting the broader generality of these results across North America.

The seasonality of canopy color variation is directly linked to photochemical processes

We found that two visible-wavelength spectral indices, G_{cc} and GRVI, reveal strong seasonal variation in color of evergreen conifer canopies. This variation occurred independently of new leaf development in spring (Figs 2, 3c; see also Zhang *et al.*, 2020). Seasonal variation in canopy color occurred in tandem with shifts in the quantum efficiency of PS II photochemistry as measured by F_v/F_m (Fig. 3a), as well as PRI (Fig. 3b) and leaf pigment pools and their ratios (Fig. 5). The leaf-level processes associated with seasonal upregulation and downregulation of the photosynthetic machinery, and related mechanisms of photoprotection, in evergreen conifer forests have been well-documented (Busch *et al.*, 2009; Fr chet te *et al.*, 2015, 2016; Wong *et al.*, 2019; Grebe *et al.*, 2020). Downregulation of photosynthesis involves inactivation of PS II reaction centers and re-organization of light harvesting complexes to function for energy dissipation (Ensminger *et al.*, 2006). Ensminger *et al.* (2004) reported that the springtime increase in NEE of a Scots pine forest, which occurred as temperatures rose above 0 C, is correlated with detectable changes in leaf pigments, F_v/F_m , and chloroplast protein synthesis. This previous work provides context for the results and support for the conclusions drawn here.

The PRI has been shown to be a reliable index of photosynthetic radiation use efficiency in evergreen forests (Garbulsky *et al.*, 2011; Soudani *et al.*, 2014). Although originally conceived to detect changes in xanthophyll cycle epoxidation state occurring on minutes to diurnal timescales (Gamon *et al.*, 1992), on seasonal timescales PRI is more indicative of shifts in the chl : car ratio that occur independently of the xanthophyll cycle (Wong & Gamon, 2015a). Upregulation and downregulation of photosynthesis occurs as a complex process involving a number of discrete components that are coordinated but operate on different timescales (Wong & Gamon, 2015b; see also Busch *et al.*, 2009; Fr chet te *et al.*, 2016). Nevertheless, on seasonal timescales PRI and CCI are reliable indicators of potential photosynthetic activity because of their sensitivity to the chl : car ratio (Wong & Gamon, 2015b; Gamon *et al.*, 2016; Wong *et al.*, 2020). Likewise, the indices used here to track canopy color, G_{cc} and GRVI, mimic the seasonality of PRI and F_v/F_m (Fig. 3) and are correlated with the chl : xan and chl : car ratios (Fig. 5), thereby establishing a plausible link between canopy color and photochemical processes.

Changes in pigment pools and ratios are detected from canopy-scale near-surface remote sensing

Near-surface remote sensing at the canopy level presents new challenges that are not typically an issue with leaf-level spectral

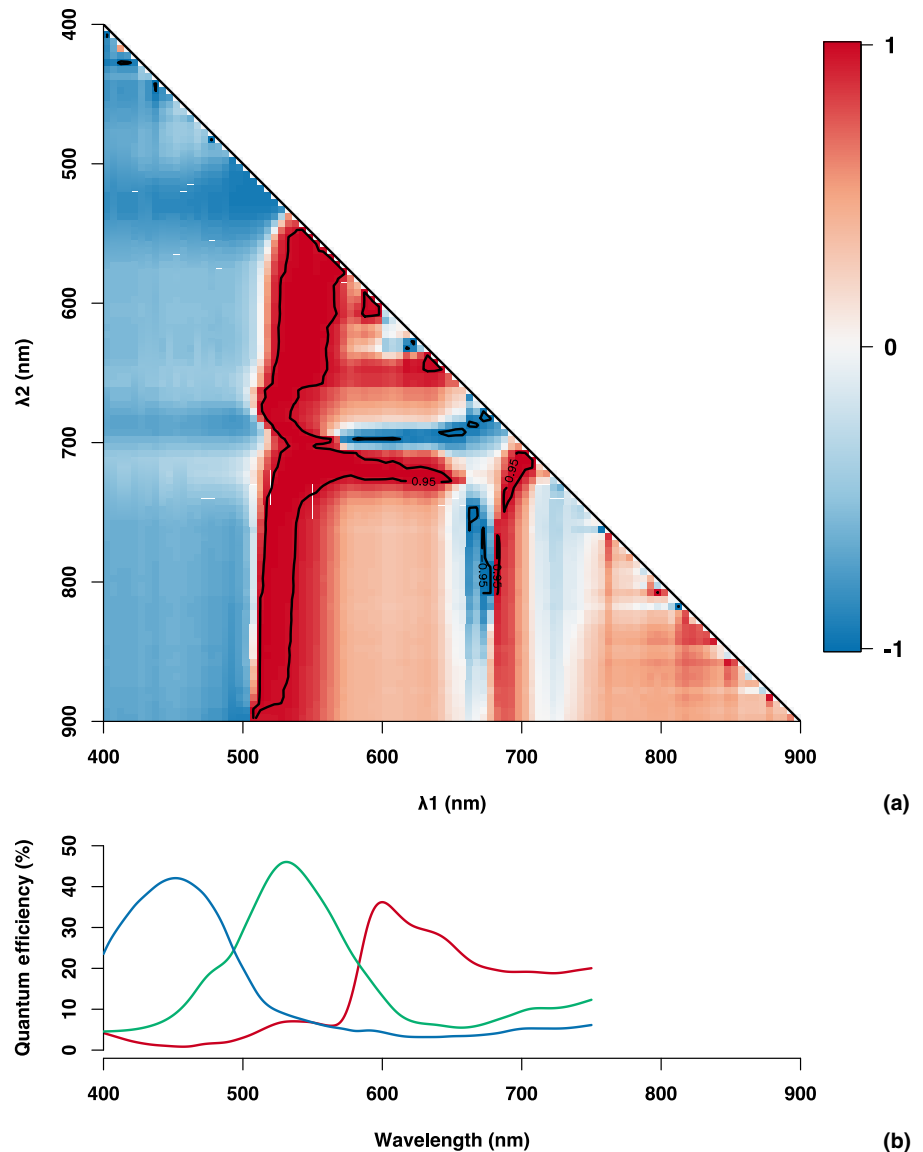


Fig. 6 (a) Heatmap plot showing Pearson (r) correlation of normalized difference indices (Eqn 3), λ_1 and λ_2 wavelengths, with leaf-level measurements of chl : car pigment ratio conducted over the course of the year. The white contour line indicates $|r| = 0.95$. (b) Quantum efficiency of PhenoCam digital cameras for each color channel. The hyperspectral reflectance data were obtained from a 2D scanning telescope, PhotoSpec.

measurements. These include the effects of canopy structure and nonphotosynthetic biomass, as well as changing illumination geometry and weather. Our study builds on previous work that has linked leaf- and canopy-level spectral measurements to seasonal co-variation in pigments and photosynthesis (Wong *et al.*, 2019, 2020). In addition to showing that vegetation indices calculated from hyperspectral PhotoSpec data correlated well with pigment pools and ratios, we found that color indices derived from broadband phenocam imagery performed almost equally well (Fig. 5). Phenocam indices have been shown to have a non-linear relationship with pigment concentrations in senescing deciduous foliage (Junker & Ensminger, 2016; Liu *et al.*, 2018). Thus, changes in pigment pools and ratios are associated with changes in foliage color that can be detected using broad-band visible-wavelength color indices.

Snow is problematic for remote sensing of evergreen forests (Jönsson *et al.*, 2010); it obscures the vegetation of interest and confounds the spectral signature. This is particularly an issue with

GRVI (Fig. 3). An advantage of the phenocam approach is that images can be visually inspected to identify days when there is snow on the canopy, and the affected images removed from the analysis (Richardson *et al.*, 2018b). Automated methods have also been developed to identify snowy images (Kosmala *et al.*, 2018). By comparison, snow cover data products from satellite remote sensing (e.g. MODIS MOD10A1 and MYD10A1) may fail to detect discontinuous snow cover (Kosmala *et al.*, 2018), which could still adversely impact spectral indices. Future studies that attempt to link data from orbiting sensors to tower-based carbon and water flux measurements could benefit from making use of the imagery from collocated phenocams to identify snowy days.

Canopy color indices derived from digital camera imaging can be used to characterize photosynthetic phenology

Although the term ‘phenology’ is typically applied to visually observable developmental events, such as budburst and flowering,

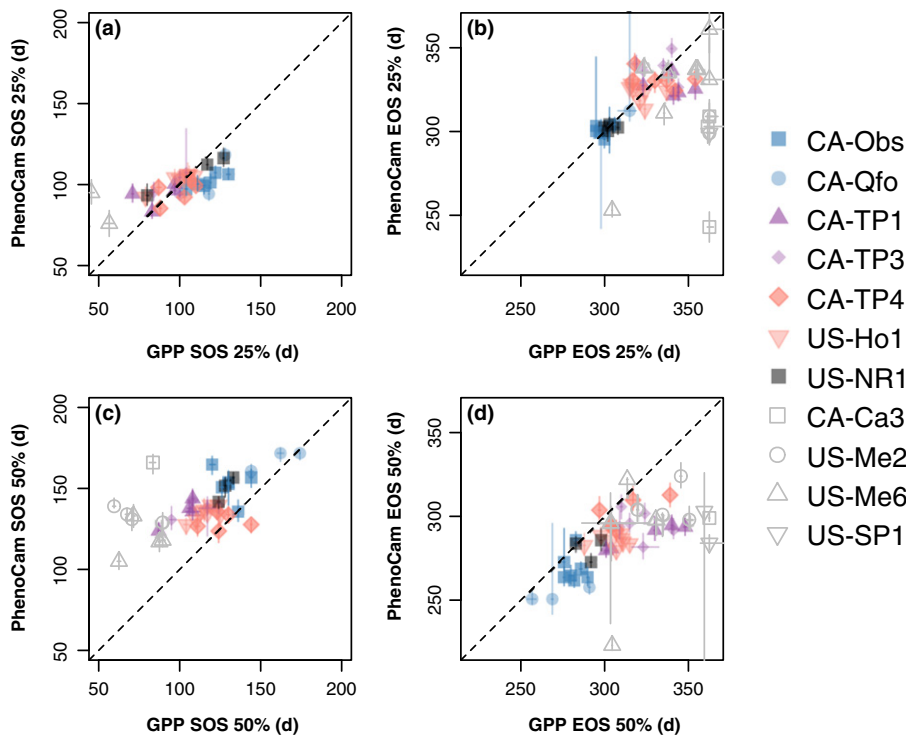


Fig. 7 Start-of-season (SOS) and end-of-season (EOS) derived from PhenoCam reflectance indices and from gross primary productivity (GPP) were highly correlated. Vertical axes show PhenoCam-based transition dates. Horizontal axes show GPP-based transition dates. Upper panels (a, b) are based on the 90th percentile of the green chromatic coordinate (G_{cc}) time series. Lower panels (c, d) are based on the mean green-red vegetation index (GRVI) time series. Individual years for each site are shown separately. Uncertainties are shown as error bars. Warm sites, where photosynthesis occurs year-round, are shown with hollow symbols.

it has also been used to describe the seasonality of physiological processes at leaf-to-ecosystem scales, e.g. ‘photosynthetic phenology’ (Gu *et al.*, 2009; Richardson *et al.*, 2013a; Gamon *et al.*, 2016). The timing of the start and end of the photosynthetically active season plays a large role in controlling annual ecosystem productivity, and how productivity varies in time and space (Richardson *et al.*, 2010a). Low-cost sensors that could be used to characterize photosynthetic phenology would be of value for scaling photosynthetic uptake from a small set of intensively-monitored sites with eddy covariance instrumentation to a much larger, more spatially extensive observation network.

Previous studies have highlighted the ability of CCI and PRI, measured at both the leaf- (Eitel *et al.*, 2019; Wong *et al.*, 2019) and canopy-level (Gamon *et al.*, 2016), to provide robust measures of the SOS and EOS dates for photosynthetic phenology. The results presented here show that G_{cc} and GRVI offer similar potential. Our analysis includes sites across a wide geographic range in North America, with SOS and EOS dates both varying by up to 70 d across sites and years (Fig. 7). We acknowledge that relationships between our phenocam indices and GPP-derived transition dates broke down at warm sites where photosynthesis was maintained year-round (albeit at a reduced rate in winter), even though G_{cc} and GRVI indicated variation in canopy color. One hypothesis to explain this pattern is that the photoprotective mechanisms at these warmer sites are not upregulated (or downregulated) to the same degree that they are in colder sites, and this drives differences in the relationship between reflectance characteristics and photochemistry. Nevertheless, our results support the idea that phenocams are low-cost but sensitive instruments that have a wide applicability in environmental monitoring (Richardson, 2019). Here, we have specifically shown the

potential value of phenocams for identifying seasonal patterns in evergreen conifer forests.

A temperature-based model can simulate the trajectory of seasonal changes in canopy color

We presented a dynamic modeling framework for simulating canopy color, and by proxy photosynthetic activity, that can be flexibly adapted to larger scales and applications. The structure of our model has roots in previous representations of evergreen phenology (Hänninen & Kramer, 2007; Hänninen, 2016). The strong sensitivity of increases in canopy greenness to warm temperature in spring, and decreases in canopy greenness in autumn that are driven by cold temperature, is consistent with our understanding of the role of temperature and photoperiod in driving evergreen seasonality (Tanja *et al.*, 2003; Ensminger *et al.*, 2004; Fréchette *et al.*, 2016). The results are also consistent with previous empirical analyses of phenocam data, which found that inter-annual variation in evergreen conifer SOS and EOS dates was mostly explained by air temperature during a narrow window preceding each transition (Richardson *et al.*, 2019). But, similar to Tanja *et al.* (2003), we found that it was necessary to parameterize our model separately at each site. And, although we had anticipated that unusually cold temperature in spring (or warm temperatures in autumn) might cause temporary reversal of the overall upward (downward) trajectory, we were unable to identify the associated temperature thresholds, perhaps because at the site level, such events are relatively rare. While further work is therefore needed to develop an improved model that generalizes well across sites, this framework may ultimately have application in global land surface models in which the seasonality of evergreen

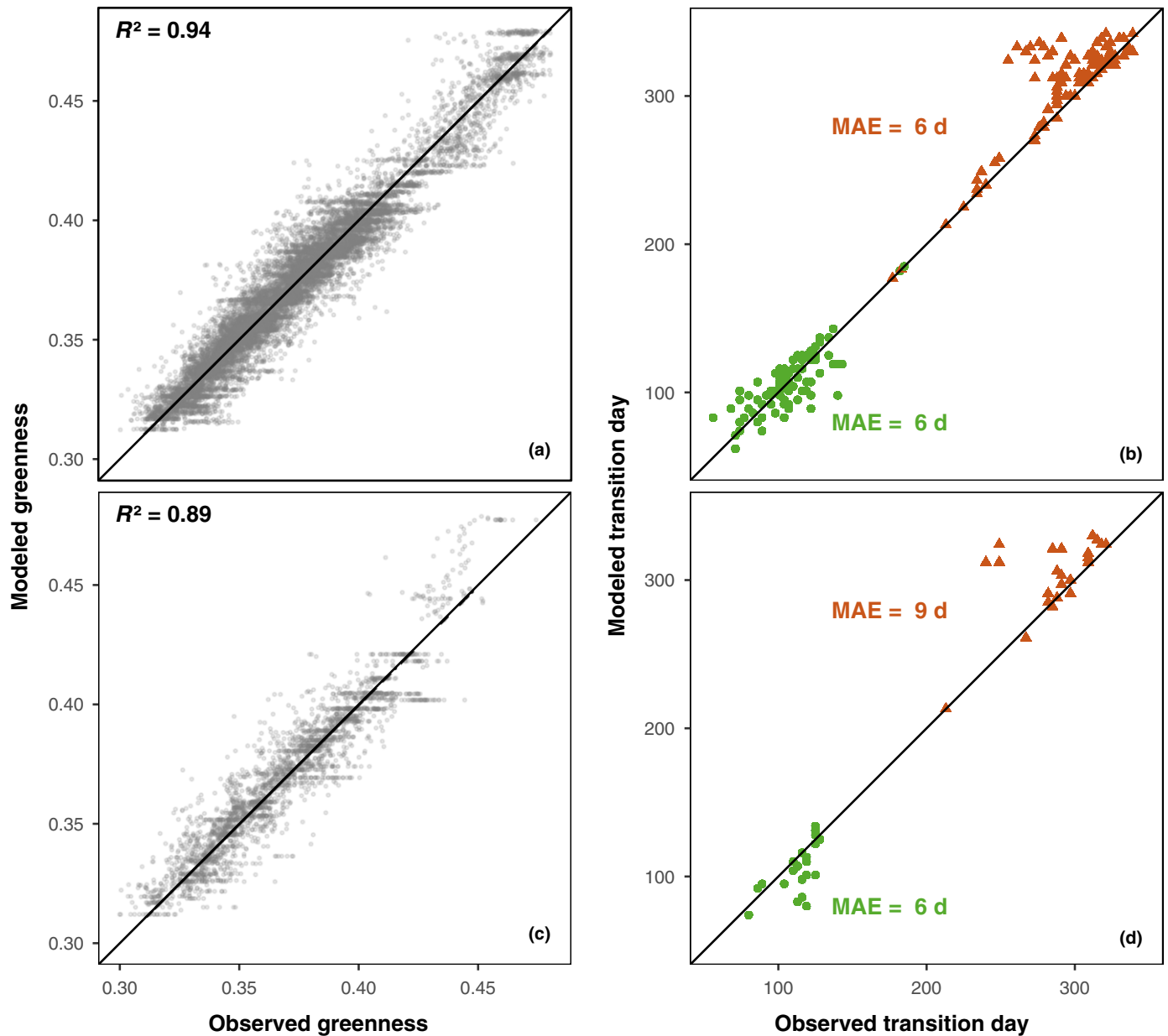


Fig. 8 Validations of the phenology model for (a, b) in-sample and (c, d) out-of-sample data. The plots on the left (a, c) are modeled vs observed greenness values. The plots on the right (b, d) are modeled vs observed transition dates values. MAE stands for median absolute error. Green circles and orange triangles on the right-hand-side panels indicate spring and autumn transition dates, respectively. Horizontal features in (a) and (c) are due to the minimum and maximum greenness values in the model parameters.

conifer forests is poorly represented (Lawrence *et al.*, 2011; Richardson *et al.*, 2012; Peaucelle *et al.*, 2019) and in incorporating potential effects from other factors such as daylength (Way & Montgomery, 2015).

Conclusion

The novel contribution of our study is the finding that seasonal pigment changes in evergreen conifers are detectable at the canopy level using imagery from low-cost, commercially available digital cameras. Given the low cost of digital cameras, our work highlights the potential value in co-locating phenocams with

more advanced instruments such as solar induced fluorescence (SIF). SIF has been shown to track changes in canopy-level photosynthetic capacity across a range of timescales in evergreen ecosystems (Zuromski *et al.*, 2018; Magney *et al.*, 2019). We note that many leaf-level studies have found it advantageous to simultaneously measure both F_v/F_m and PRI to fully understand the factors that are regulating photosynthesis at different times of the year (Busch *et al.*, 2009; Fr chet te *et al.*, 2016; Wong *et al.*, 2019). Likewise, installing phenocams at sites where SIF instrumentation is already installed may have great value for offsetting the specific limitations of each method. These measurements would be complementary and not redundant and would allow

independent quantification of the temporal kinetics of both chlorophyll fluorescence and leaf pigmentation.

Acknowledgements


This is a product of the IMGG workshop held in Flagstaff, AZ, in May 2019. ADR and DRB thank J. Page, J. White, and D. Evans for inspiration. ADR acknowledges support from the National Science Foundation, through the Macrosystems Biology (awards EF-1065029 and EF-1702697) and Long-Term Ecological Research (award DEB-1832210) programs. DRB acknowledges support from the NASA Carbon Monitoring Systems (awards NNX16AP33G and 80NSSC20K0010) and ABoVE (80NSSC19M0130) programs, and the National Science Foundation, through the Macrosystems Biology and NEON-Enabled Science program (DEB-1926090). Thanks to flux tower scientists for hosting the PhenoCams and providing flux and met data, and to many agencies for funding the flux towers. PhenoCam acknowledgments for individual sites are presented in Supporting Information. Needle pigments were quantified by Sophia Lopez, who held a Langbein Research Fellowship (Bowdoin College), with Jaret Reblin's support. The authors declare no conflict of interest.


Author contributions

ADR and DRB planned the IMGG workshop and designed the research. BS, DRB, RC, BAL, TSM, CF, JCY, AMY and KH conducted research. MAA, TAB, PDB, RB, RJ, DYH, BEL and ZN contributed tower measurements. BS, RC, DRB and ADR analyzed data. BS, DRB and ADR drafted the manuscript with input from RC, BAL, TSM and KH. All authors provided feedback on manuscript drafts and approved the manuscript for submission.

ORCID

M. Altaf Arain  <https://orcid.org/0000-0002-1433-5173>
 T. Andrew Black  <https://orcid.org/0000-0002-7494-9767>
 Peter D. Blanken  <https://orcid.org/0000-0002-7405-2220>
 David R. Bowling  <https://orcid.org/0000-0002-3864-4042>
 Rosvel Bracho  <https://orcid.org/0000-0002-8015-9796>
 Rui Cheng  <https://orcid.org/0000-0002-3003-8339>
 Christian Frankenberg  <https://orcid.org/0000-0002-0546-5857>
 Koen Hufkens  <https://orcid.org/0000-0002-5070-8109>
 David Y. Hollinger  <https://orcid.org/0000-0002-4284-1575>
 Rachhpal Jassal  <https://orcid.org/0000-0002-6727-5215>
 Beverly E. Law  <https://orcid.org/0000-0002-1605-1203>
 Barry A. Logan  <https://orcid.org/0000-0003-3920-2139>
 Troy S. Magney  <https://orcid.org/0000-0002-9033-0024>
 Zoran Nesic  <https://orcid.org/0000-0001-5728-513X>
 Andrew D. Richardson  <https://orcid.org/0000-0002-0148-6714>
 Bijan Seyednasrollah  <https://orcid.org/0000-0002-5195-2074>

Julia C. Yang  <https://orcid.org/0000-0001-9698-9033>

Adam M. Young  <https://orcid.org/0000-0003-2668-2794>

Data availability

Freely available code and data can be accessed from <https://github.com/bnasr/ENPhenology>.

References

- Baldocchi D. 2008. Turner review no. 15. 'Breathing' of the terrestrial biosphere: Lessons learned from a global network of carbon dioxide flux measurement systems. *Australian Journal of Botany* 56: 1–26.
- Balzarolo M, Vicca S, Nguy-Robertson AL, Bonal D, Elbers JA, Fu YH, Grünwald T, Horemans JA, Papale D, Peñuelas J *et al.* 2016. Matching the phenology of Net Ecosystem Exchange and vegetation indices estimated with MODIS and FLUXNET *in-situ* observations. *Remote Sensing of Environment* 174: 290–300.
- Bolhàr-Nordenkamp HR, Long SP, Baker NR, Oquist G, Schreiber U, Lechner EG. 1989. Chlorophyll fluorescence as a probe of the photosynthetic competence of leaves in the field: a review of current instrumentation. *Functional Ecology* 3: 497.
- Bonan GB. 2008. Forests and climate change: forcings, feedbacks, and the climate benefits of forests. *Science* 320: 1444–1449.
- Bowling DR, Logan BA, Hufkens K, Aubrecht DM, Richardson AD, Burns SP, Anderegg WRL, Blanken PD, Eiriksson DP. 2018. Limitations to winter and spring photosynthesis of a Rocky Mountain subalpine forest. *Agricultural and Forest Meteorology* 252: 241–255.
- Busch F, Hüner NPA, Ensminger I. 2009. Biochemical constraints limit the potential of the photochemical reflectance index as a predictor of effective quantum efficiency of photosynthesis during the winter spring transition in Jack pine seedlings. *Functional Plant Biology* 36: 1016–1026.
- Cheng R, Magney TS, Dutta D, Bowling DR, Logan BA, Burns SP, Blanken PD, Grossmann K, Lopez S, Richardson AD *et al.* 2020. Decomposing reflectance spectra to track gross primary production in a subalpine evergreen forest. *Biogeosciences Discussions* 17: 4523–4544.
- Demmig-Adams B, Adams WW. 1996. The role of xanthophyll cycle carotenoids in the protection of photosynthesis. *Trends in Plant Science* 1: 21–26.
- Eitel JUH, Maguire AJ, Boelman N, Vierling LA, Griffin KL, Jensen J, Magney TS, Mahoney PJ, Meddens AJH, Silva C *et al.* 2019. Proximal remote sensing of tree physiology at northern treeline: do late-season changes in the photochemical reflectance index (PRI) respond to climate or photoperiod? *Remote Sensing of Environment* 221: 340–350.
- Ensminger I, Busch F, Hüner NPA. 2006. Photostasis and cold acclimation: sensing low temperature through photosynthesis. *Physiologia Plantarum* 126: 28–44.
- Ensminger I, Sveshnikov D, Campbell DA, Funk C, Jansson S, Lloyd J, Shibistova O, Öquist G. 2004. Intermittent low temperatures constrain spring recovery of photosynthesis in boreal Scots pine forests. *Global Change Biology* 10: 995–1008.
- Fréchette E, Chang CY-Y, Ensminger I. 2016. Photoperiod and temperature constraints on the relationship between the photochemical reflectance index and the light use efficiency of photosynthesis in *Pinus strobus*. *Tree Physiology* 36: 311–324.
- Fréchette E, Wong CYS, Junker LV, Yao C, Chang Y, Ensminger I. 2015. Zeaxanthin-independent energy quenching and alternative electron sinks cause a decoupling of the relationship between the photochemical reflectance index (PRI) and photosynthesis in an evergreen conifer during spring. *Journal of Experimental Botany* 66: 7309–7323.
- Gamon JA, Huemmrich KF, Wong CYS, Ensminger I, Garrity S, Hollinger DY, Noormets A, Peñuelas J. 2016. A remotely sensed pigment index reveals photosynthetic phenology in evergreen conifers. *Proceedings of the National Academy of Sciences, USA* 113: 13087–13092.

- Gamon JA, Peñuelas J, Field CB. 1992. A narrow-waveband spectral index that tracks diurnal changes in photosynthetic efficiency. *Remote Sensing of Environment* 41: 35–44.
- Gamon JA, Serrano L, Surfus JS. 1997. The photochemical reflectance index: an optical indicator of photosynthetic radiation use efficiency across species, functional types, and nutrient levels. *Oecologia* 112: 492–501.
- Garbulsky MF, Peñuelas J, Gamon J, Inoue Y, Filella I. 2011. The photochemical reflectance index (PRI) and the remote sensing of leaf, canopy and ecosystem radiation use efficiencies. A review and meta-analysis. *Remote Sensing of Environment* 115: 281–297.
- Grebe S, Trotta A, Bajwa AA, Mancini I, Bag P, Jansson S, Tikkanen M, Aro EM. 2020. Specific thylakoid protein phosphorylations are prerequisites for overwintering of Norway spruce (*Picea abies*) photosynthesis. *Proceedings of the National Academy of Sciences, USA* 117: 17499–17509.
- Grossmann K, Frankenberg C, Magney TS, Hurlock SC, Seibt U, Stutz J. 2018. PhotoSpec: a new instrument to measure spatially distributed red and far-red solar-induced chlorophyll fluorescence. *Remote Sensing of Environment* 216: 311–327.
- Gu L, Post WM, Baldocchi DD, Black TA, Suyker AE, Verma SB, Vesala T, Wofsy SC. 2009. Characterizing the seasonal dynamics of plant community photosynthesis across a range of vegetation types. In: Noormets A, ed. *Phenology of ecosystem processes*. New York, NY, USA: Springer, 35–58.
- Hänninen H. 2016. *Boreal and temperate trees in a changing climate*. Dordrecht, the Netherlands: Springer.
- Hänninen H, Kramer K. 2007. A framework for modelling the annual cycle of trees in boreal and temperate regions. *Silva Fennica* 41: 167–205.
- Hollinger DY, Aber J, Dail B, Davidson EA, Goltz SM, Hughes H, Leclerc MY, Lee JT, Richardson AD, Rodrigues C *et al.* 2004. Spatial and temporal variability in forest-atmosphere CO₂ exchange. *Global Change Biology* 10: 1689–1706.
- Hollinger DY, Goltz SM, Davidson EA, Lee JT, Tu K, Valentine HT. 1999. Seasonal patterns and environmental control of carbon dioxide and water vapour exchange in an ecotonal boreal forest. *Global Change Biology* 5: 891–902.
- Jönsson AM, Eklundh L, Hellström M, Bärring L, Jönsson P. 2010. Annual changes in MODIS vegetation indices of Swedish coniferous forests in relation to snow dynamics and tree phenology. *Remote Sensing of Environment* 114: 2719–2730.
- Junker LV, Ensminger I. 2016. Relationship between leaf optical properties, chlorophyll fluorescence and pigment changes in senescing *Acer saccharum* leaves. *Tree Physiology* 36: 694–711.
- Kosmala M, Hufkens K, Richardson AD. 2018. Integrating camera imagery, crowdsourcing, and deep learning to improve high-frequency automated monitoring of snow at continental-to-global scales. *PLoS ONE* 13: e0209649.
- Lawrence DM, Oleson KW, Flanner MG, Thornton PE, Swenson SC, Lawrence PJ, Zeng X, Yang Z-L, Levis S, Sakaguchi K *et al.* 2011. Parameterization improvements and functional and structural advances in version 4 of the Community Land Model. *Journal of Advances in Modeling Earth Systems* 3: art. M03001.
- Liu Y, Wu C, Sonnentag O, Desai AR, Wang J. 2020. Using the red chromatic coordinate to characterize the phenology of forest canopy photosynthesis. *Agricultural and Forest Meteorology* 285–286: 107910.
- Liu Z, An S, Lu X, Hu H, Tang J. 2018. Using canopy greenness index to identify leaf ecophysiological traits during the foliar senescence in an oak forest. *Ecosphere* 9: e02337.
- Magney TS, Bowling DR, Logan BA, Grossmann K, Stutz J, Blanken PD, Burns SP, Cheng R, Garcia MA, Köhler P *et al.* 2019. Mechanistic evidence for tracking the seasonality of photosynthesis with solar-induced fluorescence. *Proceedings of the National Academy of Sciences, USA* 116: 11640–11645.
- Melaas EK, Friedl MA, Richardson AD. 2016. Multiscale modeling of spring phenology across deciduous forests in the eastern United States. *Global Change Biology* 22: 792–805.
- Míguez F, Fernández-Marín B, Becerril JM, García-Plazaola JI. 2015. Activation of photoprotective winter photoinhibition in plants from different environments: a literature compilation and meta-analysis. *Physiologia Plantarum* 155: 414–423.
- Peaucelle M, Ciais P, Maignan F, Nicolas M, Cecchini S, Viovy N. 2019. Representing explicit budburst and senescence processes for evergreen conifers in global models. *Agricultural and Forest Meteorology* 266–267: 97–108.
- Pielou EC. 2011. *The World of Northern evergreens*. Ithaca, NY, USA: Cornell University Press.
- Plummer M. 2013. *rjags: Bayesian graphical models using MCMC, v.4-10*. The Comprehensive R Archive Network [WWW document] URL <https://cran.r-project.org/package=rjags>.
- Richardson AD. 2019. Tracking seasonal rhythms of plants in diverse ecosystems with digital camera imagery. *New Phytologist* 222: 1742–1750.
- Richardson AD, Anderson RS, Arain MA, Barr AG, Bohrer G, Chen G, Chen JM, Ciais P, Davis KJ, Desai AR *et al.* 2012. Terrestrial biosphere models need better representation of vegetation phenology: results from the North American carbon program site synthesis. *Global Change Biology* 18: 566–584.
- Richardson AD, Andy Black T, Ciais P, Delbart N, Friedl MA, Gobron N, Hollinger DY, Kutsch WL, Longdoz B, Luysaert S *et al.* 2010a. Influence of spring and autumn phenological transitions on forest ecosystem productivity. *Philosophical Transactions of the Royal Society B: Biological Sciences* 365: 3227–3246.
- Richardson AD, Braswell BH, Hollinger DY, Jenkins JP, Ollinger SV. 2009a. Near-surface remote sensing of spatial and temporal variation in canopy phenology. *Ecological Applications* 19: 1417–1428.
- Richardson AD, Hollinger DY, Dail DB, Lee JT, Munger JW, Okeefe J. 2009b. Influence of spring phenology on seasonal and annual carbon balance in two contrasting New England forests. *Tree Physiology* 29: 321–331.
- Richardson AD, Hufkens K, Li X, Ault TR. 2019. Testing Hopkins' Bioclimatic Law with PhenoCam data. *Applications in Plant Sciences* 7: e01228.
- Richardson AD, Hufkens K, Milliman T, Aubrecht DM, Chen M, Gray JM, Johnston MR, Keenan TF, Klosterman ST, Kosmala M *et al.* 2018a. Tracking vegetation phenology across diverse North American biomes using PhenoCam imagery. *Scientific Data* 5.
- Richardson AD, Hufkens K, Milliman T, Aubrecht DM, Furze ME, Seyednasrollah B, Krassovski MB, Latimer JM, Nettles WR, Heiderman RR *et al.* 2018b. Ecosystem warming extends vegetation activity but heightens vulnerability to cold temperatures. *Nature* 560: 368–371.
- Richardson AD, Keenan TF, Migliavacca M, Ryu Y, Sonnentag O, Toomey M. 2013a. Climate change, phenology, and phenological control of vegetation feedbacks to the climate system. *Agricultural and Forest Meteorology* 169: 156–173.
- Richardson AD, Klosterman S, Toomey M. 2013b. Near-surface sensor-derived phenology. In: Schwartz MD, ed. *Phenology: an Integrative environmental science*. Dordrecht, the Netherlands: Springer, 413–430.
- Richardson AD, O'Keefe J. 2009. Phenological differences between understory and overstory. In: Noormets A, ed. *Phenology of ecosystem processes*. New York, NY, USA: Springer, 87–117.
- Richardson AD, Williams M, Hollinger DY, Moore DJP, Dail DB, Davidson EA, Scott NA, Evans RS, Hughes H, Lee JT *et al.* 2010b. Estimating parameters of a forest ecosystem C model with measurements of stocks and fluxes as joint constraints. *Oecologia* 164: 25–40.
- Seyednasrollah B, Young AM, Hufkens K, Milliman T, Friedl MA, Frohling S, Richardson AD. 2019a. Tracking vegetation phenology across diverse biomes using version 2.0 of the PhenoCam dataset. *Scientific Data* 6: 222.
- Seyednasrollah B, Young AM, Hufkens K, Milliman T, Friedl MA, Frohling S, Richardson AD, Abrahama M, Allen DW, Apple M *et al.* 2019b. *PhenoCam dataset v2.0: vegetation phenology from digital camera imagery, 2000–2018*. Oak Ridge, TN, USA: ORNL DAAC. doi: 10.3334/ornlndaac/1674.
- Sonnentag O, Hufkens K, Teshera-Sterne C, Young AM, Friedl M, Braswell BH, Milliman T, O'Keefe J, Richardson AD. 2012. Digital repeat photography for phenological research in forest ecosystems. *Agricultural and Forest Meteorology* 152: 159–177.
- Soudani K, Hmimina G, Dufréne E, Berveiller D, Delpierre N, Ourcival JM, Rambal S, Joffre R. 2014. Relationships between photochemical reflectance index and light-use efficiency in deciduous and evergreen broadleaf forests. *Remote Sensing of Environment* 144: 73–84.
- Tanja S, Berninger F, Vesala T, Markkanen T, Hari P, Mäkelä A, Ilvesniemi H, Hänninen H, Nikinmaa E, Huttula T *et al.* 2003. Air temperature triggers the

- recovery of evergreen boreal forest photosynthesis in spring. *Global Change Biology* 9: 1410–1426.
- Thornton PE, Thornton MM, Mayer BW, Wei Y, Devarakonda R, Vose RS, Cook RB. 2016. *Daymet: daily surface weather data on a 1-km grid for North America, Version 3*. Oak Ridge, TN, USA: ORNL DAAC.
- Toomey M, Friedl MA, Frohling S, Hufkens K, Klosterman S, Sonnentag O, Baldocchi DD, Bernacchi CJ, Biraud SC, Bohrer G *et al.* 2015. Greenness indices from digital cameras predict the timing and seasonal dynamics of canopy-scale photosynthesis. *Ecological Applications* 25: 99–115.
- Tucker CJ. 1979. Red and photographic infrared linear combinations for monitoring vegetation. *Remote Sensing of Environment* 8: 127–150.
- Verhoeven A. 2014. Sustained energy dissipation in winter evergreens. *New Phytologist* 201: 57–65.
- Way DA, Montgomery RA. 2015. Photoperiod constraints on tree phenology, performance and migration in a warming world. *Plant, Cell & Environment* 38: 1725–1736.
- Wong CYS, D'Odorico P, Arain MA, Ensminger I. 2020. Tracking the phenology of photosynthesis using carotenoid-sensitive and near-infrared reflectance vegetation indices in a temperate evergreen and mixed deciduous forest. *New Phytologist* 226: 1682–1695.
- Wong CYS, D'Odorico P, Bhatena Y, Arain MA, Ensminger I. 2019. Carotenoid based vegetation indices for accurate monitoring of the phenology of photosynthesis at the leaf-scale in deciduous and evergreen trees. *Remote Sensing of Environment* 233: 111407.
- Wong CYS, Gamon JA. 2015a. Three causes of variation in the photochemical reflectance index (PRI) in evergreen conifers. *New Phytologist* 206: 187–195.
- Wong CYS, Gamon JA. 2015b. The photochemical reflectance index provides an optical indicator of spring photosynthetic activation in evergreen conifers. *New Phytologist* 206: 196–208.
- Wutzler T, Lucas-Moffat A, Migliavacca M, Knauer J, Sickel K, Šigut L, Menzer O, Reichstein M. 2018. Basic and extensible post-processing of eddy covariance flux data with REddyProc. *Biogeosciences* 15: 5015–5030.
- Zhang S, Buttó V, Khare S, Deslauriers A, Morin H, Huang J-G, Ren H, Rossi S. 2020. Calibrating PhenoCam data with phenological observations of a black spruce stand. *Canadian Journal of Remote Sensing* 46: 154–165.
- Zuromski LM, Bowling DR, Köhler P, Frankenberg C, Goulden ML, Blanken PD, Lin JC. 2018. Solar-induced fluorescence detects interannual variation in gross primary production of coniferous forests in the western United States. *Geophysical Research Letters* 45: 7184–7193.

Supporting Information

Additional Supporting Information may be found online in the Supporting Information section at the end of the article.

Fig. S1 Illustration of workflow for processing tower-measured fluxes of net ecosystem exchange (NEE) of CO₂ to extract seasonality of photosynthetic capacity and associated transition dates.

Fig. S2 Temperature-based phenology model captures the seasonal trajectory of changes in canopy color for two sites with strong climatological and species composition differences.

Fig. S3 Seasonal patterns in phenocam-derived canopy color indices (G_{cc} and GRVI), and pigment contents and ratios, for three trees (two lodgepole pine: P1 and P2, and one Engelmann spruce: S1) in the field of view of the niwot5 phenocam.

Fig. S4 Heatmaps show correlation values between color- and pigment-based indices.

Table S1 Metadata for eddy covariance study sites.

Table S2 Metadata for PhenoCam study sites.

Table S3 Evaluation of correlation of start-of-season (SOS) and end-of-season (EOS) transition dates, derived from PhenoCam imagery, with corresponding dates derived from tower-based estimates of gross primary production (GPP).

Table S4 List of the fitted model parameters.

Please note: Wiley Blackwell are not responsible for the content or functionality of any Supporting Information supplied by the authors. Any queries (other than missing material) should be directed to the *New Phytologist* Central Office.