

## UC Davis

### UC Davis Previously Published Works

**Title**

COLQ variant associated with Devon Rex and Sphynx feline hereditary myopathy

**Permalink**

<https://escholarship.org/uc/item/1gq3v10s>

**Journal**

Animal Genetics, 46(6)

**ISSN**

0268-9146

**Authors**

Gandolfi, Barbara  
Grahn, Robert A  
Creighton, Erica K  
[et al.](#)

**Publication Date**

2015-12-01

**DOI**

10.1111/age.12350

Peer reviewed



## COLQ variant associated with Devon Rex and Sphynx feline hereditary myopathy

Barbara Gandolfi<sup>1</sup>, Robert A. Grahn<sup>2</sup>, Erica K. Creighton<sup>1</sup>, D. Colette Williams<sup>3</sup>, Peter J. Dickinson<sup>4</sup>, Beverly K. Sturges<sup>4</sup>, Ling T. Guo<sup>4</sup>, G. Diane Shelton<sup>5</sup>, Peter A. J. Leegwater<sup>6</sup>, Maria Longeri<sup>7</sup>, Richard Malik<sup>8</sup> and Leslie A. Lyons<sup>1</sup>

<sup>1</sup>Department of Veterinary Medicine and Surgery, College of Veterinary Medicine, University of Missouri – Columbia, Columbia, MO 65211, USA. <sup>2</sup>Veterinary Genetics Laboratory, School of Veterinary Medicine, University of California – Davis, Davis, CA 95616, USA. <sup>3</sup>The William R. Pritchard Veterinary Medical Teaching Hospital, School of Veterinary Medicine, University of California – Davis, Davis, CA 95616, USA. <sup>4</sup>Department of Surgical and Radiological Sciences, School of Veterinary Medicine, University of California – Davis, Davis, CA 95616, USA. <sup>5</sup>Department of Pathology, University of California – San Diego, La Jolla, CA 92093, USA. <sup>6</sup>Department of Clinical Sciences of Companion Animals, Faculty of Veterinary Medicine, Utrecht University, 3508 TD, Utrecht, The Netherlands. <sup>7</sup>Dipartimento di Scienze Veterinarie e Sanità Pubblica, University of Milan, Milan, Italy. <sup>8</sup>Centre for Veterinary Education, University of Sydney, Sydney, NSW 2006, Australia.

### Summary

Some Devon Rex and Sphynx cats have a variably progressive myopathy characterized by appendicular and axial muscle weakness, megaesophagus, pharyngeal weakness and fatigability with exercise. Muscle biopsies from affected cats demonstrated variable pathological changes ranging from dystrophic features to minimal abnormalities. Affected cats have exacerbation of weakness following anticholinesterase dosing, a clue that there is an underlying congenital myasthenic syndrome (CMS). A genome-wide association study and whole-genome sequencing suggested a causal variant for this entity was a c.1190G>A variant causing a cysteine to tyrosine substitution (p.Cys397Tyr) within the C-terminal domain of *collagen-like tail subunit (single strand of homotrimer) of asymmetric acetylcholinesterase (COLQ)*. Alpha-dystroglycan expression, which is associated with *COLQ* anchorage at the motor end-plate, has been shown to be deficient in affected cats. Eighteen affected cats were identified by genotyping, including cats from the original clinical descriptions in 1993 and subsequent publications. Eight Devon Rex and one Sphynx not associated with the study were identified as carriers, suggesting an allele frequency of ~2.0% in Devon Rex. Over 350 tested cats from other breeds did not have the variant. Characteristic clinical features and variant presence in all affected cats suggest a model for *COLQ* CMS. The association between the *COLQ* variant and this CMS affords clinicians the opportunity to confirm diagnosis via genetic testing and permits owners and breeders to identify carriers in the population. Moreover, accurate diagnosis increases available therapeutic options for affected cats based on an understanding of the pathophysiology and experience from human CMS associated with *COLQ* variants.

**Keywords** *collagen-like tail subunit of asymmetric acetylcholinesterase*, congenital myasthenic syndrome, domestic cat, *Felis catus silvestris*

Neuromuscular disorders encompass a variety of diseases that impair normal function of skeletal muscle. A subset of neuromuscular disorders, the congenital myasthenic

syndromes (CMSs), represent a heterogeneous group of heritable diseases caused by abnormal signal transmission at the motor endplate (EP), a synaptic connection between motor axon nerve terminals and skeletal muscle fibers (see review: Engel *et al.* 2015). Most CMSs are autosomal recessive conditions characterized by functional or structural abnormalities of proteins localized to the presynaptic, synaptic or postsynaptic regions of the motor EP. At least 18 genes are associated with genetically distinct forms of CMS (<http://www.ncbi.nlm.nih.gov/omim/?term=congenital+>

#### Address for correspondence

L. A. Lyons, Department of Veterinary Medicine & Surgery, College of Veterinary Medicine, E109 Vet Med Building, 1600 E. Rollins St., University of Missouri – Columbia, Columbia, MO 65211, USA.  
E-mail: Lyonsla@Missouri.edu

Accepted for publication 30 July 2015

myasthenic+syndromes), encoding proteins expressed at the neuromuscular junction. Their defined molecular basis in human patients supports targeted and efficient therapies for disease management and improved prognosis (see reviews: Ohno & Engel 2003; Mihaylova *et al.* 2008; Engel *et al.* 2012; Hantai *et al.* 2013).

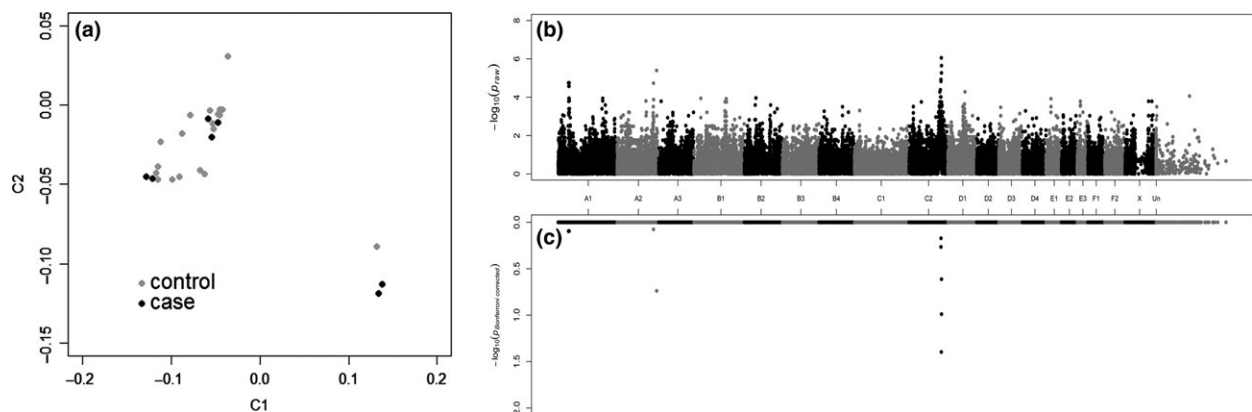
Variants in *collagen-like tail subunit (single strand of homotrimer) of asymmetric acetylcholinesterase (COLQ)* result in EP acetylcholinesterase (AChE) deficiency (EAD) and account for 10–15% of human CMS (Abicht *et al.* 2012). A diagnostic clue to an EAD is worsening of clinical weakness with anticholinesterase drugs (Engel *et al.* 2015). Thus, therapeutic options in humans include the adrenergic agonists ephedrine and albuterol, although mechanisms of action are not understood. Approximately 30 *COLQ* variants are currently associated with CMS (Ohno *et al.* 2000; Engel *et al.* 2003b; Engel & Sine 2005; Mihaylova *et al.* 2008).

Several animal models for neuromuscular disorders exist (Gaschen *et al.* 2004; Shelton & Engvall 2005). Genetically defined recessive CMS models, orthologs of human diseases, are limited: Old Danish Pointing Dogs have a *CHAT* missense variant (OMIA 000685-9615) (Proschowsky *et al.* 2007) and Brahman cattle have a *CHRNE* deletion (OMIA 000685-9913) (Kraner *et al.* 2002), whereas Labrador retrievers are the only companion animal species with a naturally occurring *COLQ* variant causing a CMS (OMIA 001928-9615) (Rinz *et al.* 2014).

A congenital myopathy in cats with autosomal recessive inheritance has been defined in Devon Rex and Sphynx breeds (OMIA 001621-9685) (Lievesley & Gruffydd-Jones 1989; Robinson 1992; Malik *et al.* 1993). Affected cats present with passive ventroflexion of the head and neck,

head bobbing, scapulae protrusion, megaesophagus, generalized muscle weakness and fatigability (Malik *et al.* 1993) (Video S1, Case 1 (Martin *et al.* 2008); Video S2, Case 1 (Shelton *et al.* 2007)). Muscle biopsies from affected cats demonstrated variable pathological changes ranging from dystrophic features (Malik *et al.* 1993) to minimal abnormalities (Martin *et al.* 2008). Weakness of an affected cat was exacerbated by dosing with edrophonium, a clue that the problem might be a CMS. Crystalline inclusions were reported in a single cat (Shelton *et al.* 2007). In a Sphynx and Devon Rex with identical clinical presentations, reduced expression of  $\alpha$ -dystroglycan was noted, whereas  $\beta$ -dystroglycan, sarcoglycans, laminin  $\alpha$ 2 and dystrophin were expressed at normal levels (Martin *et al.* 2008).

To genetically localize the Devon Rex/Sphynx myopathy, a case–control genome-wide association study was conducted. Seven affected Devon Rex and 19 healthy Devon Rex cats were genotyped on the Illumina Infinium feline 63K array. Case–control population substructure was evaluated with identity by descent (IBD) and samples clustering (multidimensional scaling) analyses using PLINK (Purcell *et al.* 2007), as described previously (Gandolfi *et al.* 2012) (Fig. 1a). Two affected cats were full siblings, two samples had an IBD value of  $\sim$ 0.3 and the remaining three samples showed some relatedness ( $\sim$ 0.2). The most significantly associated SNP ID C2:144738996 on cat chromosome C2, the homolog to human chromosome 3, was at position C2:131,341,886 ( $P_{\text{raw}} = 8.89e^{-7}$ , Bonferroni correction = 0.04) of feline genome assembly 6.2 (Montague *et al.* 2014) (Fig. 1b, c), which is  $\sim$ 463-Kb upstream of *COLQ*. A common homozygous haplotype of almost 5 Mb within all cases spanning from position C2:128 192 494–131 992 072 contained 31 annotated genes (Fig. S1).



**Figure 1** Multidimensional scaling and Manhattan plot of the myopathy genome-wide association study (GWAS). (a) Multidimensional scaling illustrating the distribution in two dimensions of the cases and controls of the Devon Rex used in the GWAS. The GWAS genomic inflation ( $\lambda$ ) was 1.68. Although the detected population substructure is attributable to the relatedness between individuals, all samples were kept in the analysis due to the low number of available cases. Population stratification can confound a study, resulting in both false-positive and false-negative results. False results can be corrected using Bonferroni adjustment for multiple comparison and permutation testing analyses (see below). (b) Manhattan plot summarizing the case–control GWAS for myopathy cats. The most significantly associated SNPs were on cat chromosome C2 at positions 131 341 886 and 132 070 766; *COLQ* was located within the two highest SNP associations. (c) Bonferroni-corrected values of each SNP included in the case–control study. Variant at position 131 341 886 on chromosome C2 remained significant after Bonferroni correction (0.04) ( $-\log_{10}$  1.4) and almost attains genome-wide significance after 100 000 permutations ( $P_{\text{genome}}$  value = 0.13).

As part of the 99 Lives Cat Genome Sequencing Initiative ([www.felinegenetics.missouri.edu/99Lives](http://www.felinegenetics.missouri.edu/99Lives)), one Devon Rex cat with myopathy (Case 1; Shelton *et al.* 2007) was whole-genome sequenced. Two bar-coded PCR-free libraries (350 and 550 bp) were prepared using Illumina's TruSeq DNA PCR-Free sample preparation kit (#FC-121-3001), pooled and sequenced on a HiSeq 2000 (Illumina), generating paired-end 100-base reads to a genome depth of 20X. Reads were demultiplexed, trimmed with TRIMMOMATIC (Bolger *et al.* 2014) and aligned to the *Felis catus* 6.2 genome (<http://www.ncbi.nlm.nih.gov/assembly/320798>) with BWA-MEM (Li & Durbin 2009). Duplicates were marked with SAMBLASTER (Faust & Hall 2014), and variants were called with PLATYPUS (Rimmer *et al.* 2014). Variant effects were predicted with SnpEff (Cingolani *et al.* 2012) based on Ensembl gene model release 75 (Cunningham *et al.* 2015). Candidate variants genome wide and in the region of association and their depth of coverage were identified using dynamic filters based on phenotype-specific allele frequencies in the Variant Explorer tool on the MAVERIX ANALYTIC PLATFORM ([maverixbio.com](http://maverixbio.com)) and viewed using the UCSC Genome Browser (Rosenbloom *et al.* 2015).

Considering SNP effects and their impacts (Table S2), only five moderate impact variants in three different genes (*TOPBP1*, *NPHP3* and *COLQ*) were detected within the associated haplotype, unique to the affected sequenced cat and wild type in a sequence database of 18 additional healthy cats of different breeds. *COLQ* (C2:131 805 630–131 863 452) represented the only candidate gene in the region, and only one missense mutation (c.1190G>A at position 131 809 279 of chromosome C2) was identified within the gene coding region, suggesting the cat as a model for CMS. The publicly available *COLQ* sequence ([www.ensembl.org](http://www.ensembl.org)) more likely has exon 1 annotated incorrectly; using the human exon 1 sequence, the feline sequence was retrieved using the NCBI 'trace archive' tool ([http://blast.ncbi.nlm.nih.gov/Blast.cgi?PROGRAM=blastn&BLAST\\_SPEC=TraceArchive&PAGE\\_TYPE=BlastSearch&PROG\\_DEFAULTS=on](http://blast.ncbi.nlm.nih.gov/Blast.cgi?PROGRAM=blastn&BLAST_SPEC=TraceArchive&PAGE_TYPE=BlastSearch&PROG_DEFAULTS=on)). The exon 1 sequence is included in the latest version of the genome assembly (position on chromosome C2: 131 863 337–131 863 442), and reads from all cats were aligned to the reference genome by MAVERIX. No additional mutations segregating with the phenotype were detected in exon 1. *In silico* sequence translation of feline wild-type *COLQ* generated from the 1368-bp coding sequence (CDS) predicted a length of 455 amino acids. The predicted alignment suggests 88.4% identity to human *COLQ* (Fig. S2). To further correlate the identified variant with disease, 627 cats were genotyped by direct Sanger-based sequencing or an allele-specific assay, as described previously (Bighignoli *et al.* 2007; Gandolfi *et al.* 2012) (Table 1, Table S1, Table S3). Eighteen affected cats were homozygous for the variant, including DNA isolated from formalin-fixed paraffin-embedded samples of the originally described affected Devon Rex cats (Malik *et al.*

**Table 1** *COLQ* c.1190A>G genotypes in domestic cats breeds

Type <sup>1</sup>	Population	No.	Wild type (C/C)	Carrier (C/T)	Affected (T/T)
Biased	Devon Rex	40	17	5	18
Unbiased	Devon Rex	202	194	8 (1.8%)	0
	Sphynx	217	216	1 (0.2%)	0
	Other breeds (26)	168	168	0	0
	Subtotal	587	578	9	0
Total		627	595	14	18

<sup>1</sup>Type implies if the cat samples were 'biased' because of collection as part of the disease study versus 'unbiased' because the laboratory conducted a population screen of samples submitted for other genetic tests (typically coat color). Biased-affected cats include the cats from all three publications (Malik *et al.* 1993; Shelton *et al.* 2007; Martin *et al.* 2008). Four of five sampled cats from Malik *et al.* (1993) were successfully genotyped from formalin-fixed paraffin-embedded muscle specimens.

1993), case 1 with inclusion bodies (Shelton *et al.* 2007) and cases 1 and 2 (four cats) with the  $\alpha$ -dystroglycan deficiency (Martin *et al.* 2008). To estimate the variant frequency in the Devon Rex and Sphynx breeds, 202 Devon Rex and 217 Sphynx that were submitted for DNA typing of coat colors (i.e. not associated with the disease study) were genotyped. Eight Devon Rex and one Sphynx were heterozygotes, and none were homozygous for the *COLQ* variant, implying allele frequencies of ~2.0% for Devon Rex and 0.2% for Sphynx, a breed that has allowable outcrosses to Devon Rex (Gandolfi *et al.* 2010). The variant was absent in 168 cats from 26 different breeds (Table S1). The disease was first identified in the Devon Rex, and the higher allele frequency suggests the variant originated in this breed.

*COLQ* encodes the collagenous tail of acetylcholinesterase, the enzyme that terminates signal transduction at the neuromuscular junction (Cartaud *et al.* 2004; Kimbell *et al.* 2004). *COLQ* has three domains: an N-terminal proline-rich attachment domain (PRAD), a collagen central domain and a C-terminal domain. The ColQ strand is attached to an AChE tetramer by the PRAD domain, whereas the collagen and C-terminal domains assemble the triple helix (Ohno *et al.* 2000). Moreover, the C-terminal domain anchors the structure to the muscle cell membrane basal lamina (Kimbell *et al.* 2004) that includes association with the  $\alpha$ -dystroglycan complex (Rotundo *et al.* 2005; Sigoillot *et al.* 2010). This association may explain reduced expression of  $\alpha$ -dystroglycan observed in some cats (Martin *et al.* 2008) as a downstream effect of *COLQ* variants.

Human patients with *COLQ* variants (OMIM 603034) are generally severely disabled from an early age, with respiratory difficulties and progressive involvement of the axial muscles leading to severe scoliosis and restrictive ventilatory deficit (Engel *et al.* 2003a). This clinical presentation is similar in cats, which show lordosis rather than scoliosis. Cats generally succumb to the disease by food-related asphyxiation or aspiration pneumonia referable to bulbar

weakness (Malik *et al.* 1993; Shelton & Engvall 2005). As more CMS cases are attributed to *COLQ* variants, the heterogeneity of the disease has proven to be substantial. The majority of *COLQ* variants associated with CMS are frameshift or nonsense mutations that truncate the protein distally to PRAD (Ohno *et al.* 2000; Engel *et al.* 2003a; Engel & Sine 2005; Mihaylova *et al.* 2008). *COLQ* missense variants in humans have been identified in all three domains (Mihaylova *et al.* 2008; Engel *et al.* 2015). The cat variant (c.1190G>A) is associated with a cysteine to tyrosine substitution (p.Cys397Tyr) in the wild-type protein within the C-terminal domain (submitted NCBI SNP identifier 1791785835). In humans, missense changes have been noted at p.Cys386Ser, p.Arg410Gln and p.Arg410Pro, including a similar but upstream variant at p.Cys417Tyr as well as a nonsense variant at p.Gln371Xaa.

The wide phenotypic and genotypic spectrum of EP AChE deficiency has led to the discovery of several patients with an absence of classical clinical symptoms that complicate diagnoses, including absence of a multiple compound muscle action potential (CMAP) (Mihaylova *et al.* 2008). Clinical findings were similarly variable in the cats of this report. Four genotyped cats [two Devon Rex (Shelton *et al.* 2007) and two Sphynxes (Martin *et al.* 2008)], which all were considered affected, underwent electrodiagnostic testing, consisting of electromyography (EMG), motor and sensory nerve conduction velocity testing and repetitive nerve stimulation (RNS). EMG findings ranged from prolonged insertion to spontaneous activity (fibrillation potentials, positive sharp waves and complex repetitive discharges). Numerous complex repetitive discharges were found in the laryngeal muscles of one Sphynx. Although CMAP amplitudes were reduced in one cat, sensory nerve conduction velocity values were normal in all cats. All cats had a normal CMAP morphology, that is multiple CMAPs following a single stimulus were not observed. RNS results were variable: One Devon Rex and one Sphynx had no significant decrement (i.e. <10%), another Devon Rex showed a mild decremental response whereas the other Sphynx decremented greatly (Fig. S3a). Edrophonium administration had no effect (Fig. S3b).

Identification of the *COLQ* variant associated with this feline CMS affords clinicians the opportunity of establishing a diagnosis via genetic testing in these breeds. Furthermore, owners and breeders can now easily identify carriers in the population. An accurate diagnosis increases available therapeutic options for affected cats, such as the use of drugs such as ephedrine.

## Acknowledgements

Funding was provided by the National Center for Research Resources R24 RR016094 and is currently supported by the Office of Research Infrastructure Programs/OD R24OD010928, the University of Missouri–Columbia

Gilbreath-McLorn Endowment, the Winn Feline Foundation (W10-014, W11-041, MT13-010), the Phyllis and George Miller Trust (MT08-015), the University of California–Davis, Center for Companion Animal Health (2008-36-F, 2008-06-F) and the Cat Health Network (D12FE-510) (LAL). Richard Malik is supported by the Valentine Charlton Bequest. We appreciate the assistance of Nicholas Gustafson, the dedication of cat breeders Sybil Drummond and Pam Dowlings, Paolo Valiati, and the Italian Feline Biobank-Vetogene.

## References

- Abicht A., Dusl M., Gallenmuller C. *et al.* (2012) Congenital myasthenic syndromes: achievements and limitations of phenotype-guided gene-after-gene sequencing in diagnostic practice: a study of 680 patients. *Human Mutation* **33**, 1474–84.
- Bighignoli B., Niini T., Grahn R.A., Pedersen N.C., Millon L.V., Polli M., Longeri M. & Lyons L.A. (2007) Cytidine monophospho-N-acetylneuraminic acid hydroxylase (CMAH) mutations associated with the domestic cat AB blood group. *BMC Genetics* **8**, 27.
- Bolger A.M., Lohse M. & Usadel B. (2014) TRIMMOMATIC: a flexible trimmer for Illumina sequence data. *Bioinformatics* **30**, 2114–20.
- Cartaud, A., Strohlic, L., Guerra, M., Blanchard, B., Lambergeon, M., Krejci, E., Cartaud, J. and Legay, C. (2004) *J Cell Biol.*, **165**, 505–15.
- Cingolani P., Platts A., Wang L.L., Coon M., Nguyen T., Wang L., Land S.J., Lu X. & Ruden D.M. (2012) A program for annotating and predicting the effects of single nucleotide polymorphisms, SNPEFF: SNPs in the genome of *Drosophila melanogaster* strain w1118; iso-2; iso-3. *Fly*, **6**, 80–92.
- Cunningham F., Amode M.R., Barrell D. *et al.* (2015) Ensembl 2015. *Nucleic Acids Research* **43**, D662–9.
- Engel A.G. & Sine S.M. (2005) Current understanding of congenital myasthenic syndromes. *Current Opinion in Pharmacology* **5**, 308–21.
- Engel A.G., Ohno K. & Sine S.M. (2003a) Congenital myasthenic syndromes: progress over the past decade. *Muscle and Nerve* **27**, 4–25.
- Engel A.G., Ohno K. & Sine S.M. (2003b) Sleuthing molecular targets for neurological diseases at the neuromuscular junction. *Nature Reviews Neuroscience* **4**, 339–52.
- Engel A.G., Shen X.M., Selcen D. & Sine S. (2012) New horizons for congenital myasthenic syndromes. *Annals of the New York Academy of Sciences* **1275**, 54–62.
- Engel A.G., Shen X.-M., Selcen D. & Sine S.M. (2015) Congenital myasthenic syndromes: pathogenesis, diagnosis, and treatment. *The Lancet Neurology* **14**, 420–34.
- Faust G.G. & Hall I.M. (2014) SAMBLASTER: fast duplicate marking and structural variant read extraction. *Bioinformatics* **30**, 2503–5.
- Gandolfi B., Outerbridge C.A., Beresford L.G., Myers J.A., Pimentel M., Alhaddad H., Grahn J.C., Grahn R.A. & Lyons L.A. (2010) The naked truth: Sphynx and Devon Rex cat breed mutations in *KRT71*. *Mammalian Genome* **21**, 509–15.
- Gandolfi B., Gruffydd-Jones T.J., Malik R., Cortes A., Jones B.R., Helps C.R., Prinzenberg E.M., Erhardt G. & Lyons L.A. (2012) First WNK4-hypokalemia animal model identified by genome-wide association in Burmese cats. *PLoS ONE* **7**, e53173.

- Gaschen F., Jaggy A. & Jones B. (2004) Congenital diseases of feline muscle and neuromuscular junction. *Journal of Feline Medicine & Surgery* **6**, 355–66.
- Hantai D., Nicole S. & Eymard B. (2013) Congenital myasthenic syndromes: an update. *Current Opinion in Neurology* **26**, 561–8.
- Kimbell L.M., Ohno K., Engel A.G. & Rotundo R.L. (2004) C-terminal and heparin-binding domains of collagenic tail subunit are both essential for anchoring acetylcholinesterase at the synapse. *Journal of Biological Chemistry* **279**, 10997–1005.
- Kraner S., Sieb J.P., Thompson P.N. & Steinlein O.K. (2002) Congenital myasthenia in Brahman calves caused by homozygosity for a *CHRNE* truncating mutation. *Neurogenetics* **4**, 87–91.
- Li H. & Durbin R. (2009) Fast and accurate short read alignment with Burrows–Wheeler transform. *Bioinformatics* **25**, 1754–60.
- Lievesley P. & Gruffydd-Jones T. (1989) Episodic collapse and weakness in cats. *Veterinary Annual* **29**, 261–9.
- Malik R., Mepstead K., Yang F. & Harper C. (1993) Hereditary myopathy of Devon Rex cats. *Journal of Small Animal Practice* **34**, 539–46.
- Martin P.T., Shelton G.D., Dickinson P.J. *et al.* (2008) Muscular dystrophy associated with  $\alpha$ -dystroglycan deficiency in Sphynx and Devon Rex cats. *Neuromuscular Disorders* **18**, 942–52.
- Mihaylova V., Müller J.S., Vilchez J.J. *et al.* (2008) Clinical and molecular genetic findings in *COLQ*-mutant congenital myasthenic syndromes. *Brain* **131**, 747–59.
- Montague M.J., Li G., Gandolfi B. *et al.* (2014) Comparative analysis of the domestic cat genome reveals genetic signatures underlying feline biology and domestication. *PNAS* **111**, 17230–5.
- Ohno K. & Engel A.G. (2003) Congenital myasthenic syndromes: gene mutation. *Neuromuscular Disorders* **13**, 854–7.
- Ohno K., Engel A.G., Brengman J.M. *et al.* (2000) The spectrum of mutations causing end-plate acetylcholinesterase deficiency. *Annals of Neurology* **47**, 162–70.
- Proschowsky H.F., Flagstad A., Cirera S., Joergensen C.B. & Fredholm M. (2007) Identification of a mutation in the *CHAT* gene of Old Danish Pointing Dogs affected with congenital myasthenic syndrome. *Journal of Heredity* **98**, 539–43.
- Purcell S., Neale B., Todd-Brown K. *et al.* (2007) PLINK: a tool set for whole-genome association and population-based linkage analyses. *The American Journal of Human Genetics* **81**, 559–75.
- Rimmer A., Phan H., Mathieson I., Iqbal Z., Twigg S.R., WGS500 Consortium, Wilkie A.O., McVean G. & Lunter G. (2014) Integrating mapping-, assembly- and haplotype-based approaches for calling variants in clinical sequencing applications. *Nature Genetics* **46**, 912–8.
- Rinz C.J., Levine J., Minor K.M., Humphries H.D. *et al.* (2014) A *COLQ* missense mutation in Labrador Retrievers having congenital myasthenic syndrome. *PLoS One*. 2014 Aug **28**;9(8): e106425. doi: 10.1371/journal.pone.0106425. eCollection 2014
- Robinson R. (1992) 'Spasticity' in the Devon Rex cat. *Veterinary Record* **132**, 302.
- Rosenbloom K.R., Armstrong J., Barber G.P. *et al.* (2015) The UCSC Genome Browser database: 2015 update. *Nucleic Acids Research* **43**, D670–81.
- Rotundo R.L., Rossi S.G., Kimbell L.M., Ruiz C. & Marrero E. (2005) Targeting acetylcholinesterase to the neuromuscular synapse. *Chemico-Biological Interactions*, **157–158**, 15–21.
- Shelton G.D. & Engvall E. (2005) Canine and feline models of human inherited muscle diseases. *Neuromuscular Disorders* **15**, 127–38.
- Shelton G.D., Sturges B.K., Lyons L.A., Williams D.C., Aleman M., Jiang Y. & Mizisin A.P. (2007) Myopathy with tubulin-reactive inclusions in two cats. *Acta Neuropathologica* **114**, 537–42.
- Sigoillot S.M., Bourgeois F., Lambergeon M., Strohlic L. & Legay C. (2010) ColQ controls postsynaptic differentiation at the neuromuscular junction. *Journal of Neuroscience* **30**, 13–23.

## Supporting information

Additional supporting information may be found in the online version of this article.

**Table S1** *COLQ* c.1190G>A genotypes in domestic cat breeds

**Table S2** WGS variants identified in 20× coverage of an affected Devon Rex.

**Table S3** PCR primers used for genotyping *COLQ* variant in cats.

**Figure S1** Haplotype comparison between cases and controls in the region of association.

**Figure S2** *COLQ* CDS and protein sequence. Presented are the feline wild-type and mutated CDS and amino acid *COLQ* sequences.

**Figure S3** Decremental response to repetitive nerve stimulation at 3 Hz in an affected Sphynx cat.

**Video S1** Sphynx cats with *COLQ* variant for congenital myasthenic syndrome (CMS). Affected cats present with passive ventroflexion of the head and neck, head bobbing, scapulae protrusion, megaesophagus, generalized muscle weakness and fatigability (Malik *et al.* 1993). The video represents the three Sphynx male siblings that demonstrated  $\alpha$ -dystroglycan deficiency - Case 1 (Martin *et al.* 2008). Each cat died of food-related asphyxiation or aspiration;

**Video S2** Devon Rex cat with *COLQ* variant for congenital myasthenic syndrome (CMS). Affected cats present with passive ventroflexion of the head and neck, head bobbing, scapulae protrusion, megaesophagus, generalized muscle weakness and fatigability (Malik *et al.* 1993). The video represents the Devon Rex with milder disease and crystalline inclusion bodies in muscle biopsy specimens – Case 1 (Shelton *et al.* 2007). This cat was euthanized due to complications of a fibrosarcoma.