

UC Davis

UC Davis Previously Published Works

Title

Towards an eco-evolutionary understanding of endemism hotspots and refugia.

Permalink

<https://escholarship.org/uc/item/1qg7p556>

Journal

Annals of Botany, 122(6)

ISSN

0305-7364

Authors

Keppel, Gunnar
Ottaviani, Gianluigi
Harrison, Susan
et al.

Publication Date

2018-11-30

DOI

10.1093/aob/mcy173

Peer reviewed

VIEWPOINT

Towards an eco-evolutionary understanding of endemism hotspots and refugia

Gunnar Keppel^{1,2,3,*†}, Gianluigi Ottaviani^{4,5,†}, Susan Harrison⁶, Grant W. Wardell-Johnson⁷,
Matteo Marcantonio⁸ and Ladislav Mucina^{4,9}

¹Natural and Built Environments Research Centre, School of Natural and Built Environments, University of South Australia, GPO Box 2471, SA 5001, Adelaide, Australia, ²Future Industries Institute, University of South Australia, GPO Box 2471, SA 5001, Adelaide, Australia, ³Biodiversity, Macroecology & Biogeography, Faculty of Forest Sciences, University of Göttingen, Büsgenweg 1, 37077 Göttingen, Germany, ⁴School of Biological Sciences, The University of Western Australia, 35 Stirling Highway, Crawley, WA 6009, Perth, Australia, ⁵Institute of Botany, Academy of Sciences of the Czech Republic, 135 Dukelská, 379 82, Třeboň, Czech Republic, ⁶Department of Environmental Science and Policy, University of California Davis, Davis, CA 95616, USA, ⁷Curtin Institute for Biodiversity and Climate, ARC Centre for Mine Site Restoration and School of Molecular and Life Sciences, Curtin University, Kent St., Bentley, Australia, ⁸Department of Pathology, Microbiology, and Immunology, School of Veterinary Medicine, University of California, Davis, CA 95616, USA and ⁹Department of Geography and Environmental Studies, Stellenbosch University, Private Bag X1, Matieland 7602, Stellenbosch, South Africa.

* For correspondence. E-mail gunnar.keppel@unisa.edu.au

†These authors contributed equally to this paper.

Received: 6 April 2018 Returned for revision: 4 June 2018 Editorial decision: 16 August 2018 Accepted: 11 September 2018
Published electronically 15 September 2018

- **Background** Refugia are island-like habitats that are linked to long-term environmental stability and, as a result, high endemism. Conservation of refugia and endemism hotspots should be based on a deep ecological and evolutionary understanding of their functioning, which remains limited. Although functional traits can provide such insights, a corresponding, coherent framework is lacking.
- **Proposed Framework** Plant communities in refugia and endemism hotspots should, due to long-term environmental stability, display unique functional characteristics linked to distinct phylogenetic patterns. Therefore, such communities should be characterized by a functional signature that exhibits: (1) distinct values and combinations of traits, (2) higher functional diversity and (3) a prevalence of similar traits belonging to more distantly related lineages inside, compared to outside, of endemism hotspots and refugia. While the limited functional trait data available from refugia and endemism hotspots do not allow these predictions to be tested rigorously, three potential applications of the functional signature in biogeography and conservation planning are highlighted. Firstly, it allows the functional characteristics of endemism hotspots and refugia to be identified. Secondly, the strength of the functional signature can be compared among these entities, and with the surrounding landscape, to provide an estimate of the capacity of endemism hotspots and refugia to buffer environmental changes. Finally, the pattern of the functional signature can reveal ecological and evolutionary processes driving community assembly and functioning, which can assist in predicting the effect of environmental changes (e.g. climate, land-use) on communities in endemism hotspots and refugia.
- **Conclusion** The proposed functional signature concept allows the systematic integration of plant functional traits and phylogeny into the study of endemism hotspots and refugia, but more data on functional traits in these entities are urgently needed. Overcoming this limitation would facilitate rigorous testing of the proposed predictions for the functional signature, advancing the eco-evolutionary understanding of endemism hotspots and refugia.

Key words: Biodiversity, capacity of refugia, centres of endemism, community assembly, conservation planning, eco-evolutionary processes, endemism hotspots, environmental changes, functional biogeography, functional diversity and redundancy, plant functional traits, refugia.

INTRODUCTION

Refugia provide more stable environmental conditions (e.g. climate, resource availability) for biota than the surrounding landscape, either through large areas that are environmentally buffered (macrorefugia) or by environmental heterogeneity facilitating the retention of smaller areas with suitable habitats (microrefugia) within close proximity (Rull, 2009; Ashcroft, 2010; Dobrowski, 2011; Keppel *et al.*, 2012; Costa *et al.*, 2018). Refugia therefore affect past, current and future distributions of

biota that can retreat to these more benign, island-like habitats during unfavourable conditions (Fig. 1), and then potentially recolonize the surrounding landscape when conditions again become favourable (Taberlet *et al.*, 1998; Svenning *et al.*, 2008). Hence, refugia can be considered spatially distinct geographical units (Ashcroft *et al.*, 2009, 2012; Mackey *et al.*, 2012) of relative long-term environmental stability (Tzedakis *et al.*, 2002; Taberlet and Cheddadi, 2002; Médail and Diadema, 2009).

The conditions of stability and isolation in refugia (when compared to similar habitats that are not refugia) promote the

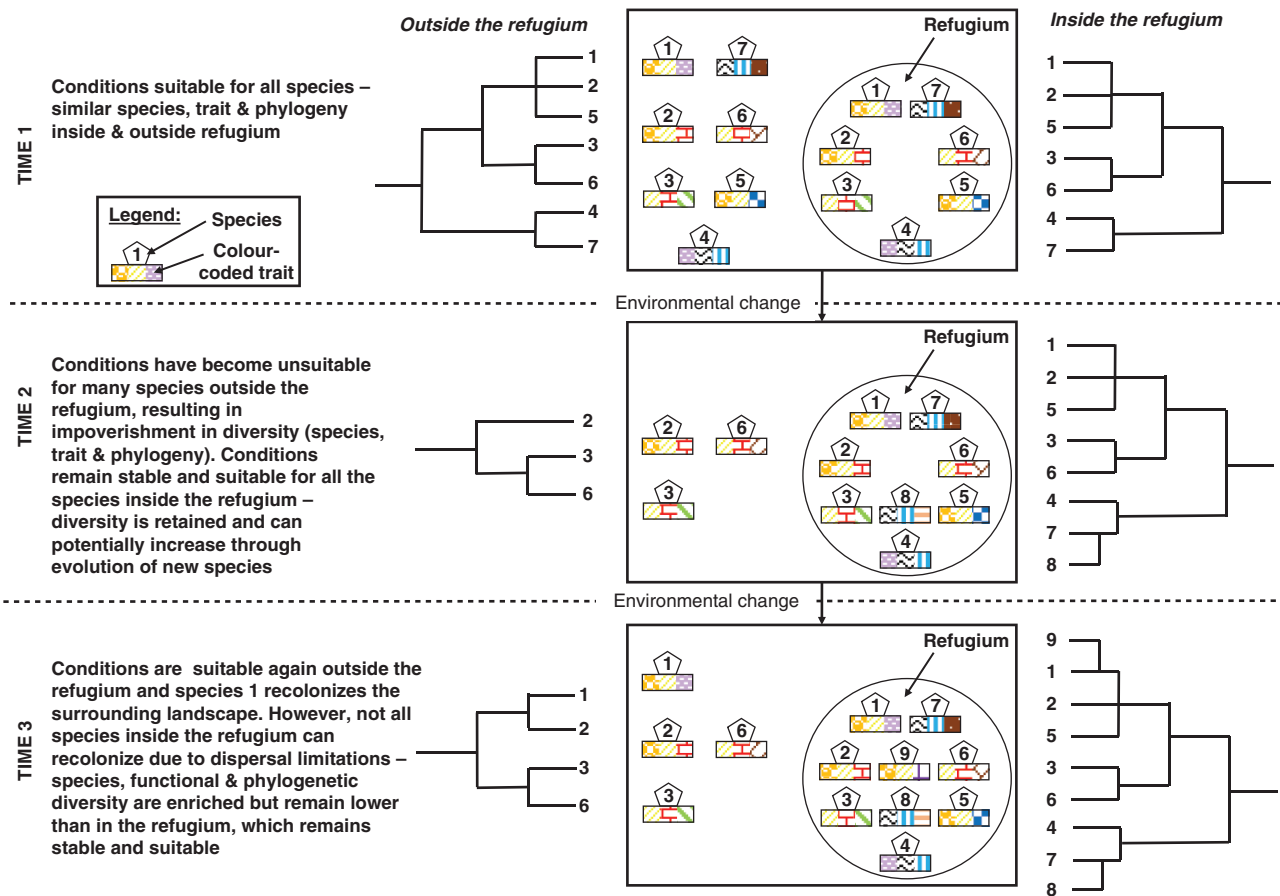


FIG. 1. Schematic representation of the eco-evolutionary emergence of a refugium, indicating the traits and phylogeny of species inside and outside of a refugium at three time periods separated by environmental change. The number of species (indicated numbers), functional traits (colour-coded squares in rectangles) and phylogenetic diversity (illustrated by phylogenetic trees) are retained and increase inside refugia compared to the surrounding landscape, which is experiencing harsher environmental conditions.

persistence and evolution of species, producing high endemism (Kier *et al.*, 2009; Harrison and Noss, 2017; Sandel *et al.*, 2017). Macrorefugia would be expected to support larger populations and more species and are hence considered to have a larger capacity to support biodiversity (Keppel *et al.*, 2015). However, several microrefugia could also combine to provide a high-capacity refugium, provided there is sufficient connectivity. In addition to size, the amount of environmental stability and microclimatic heterogeneity have been proposed to influence the capacity of refugia (Keppel *et al.*, 2015). Here we will focus on refugia with a high capacity to enable the persistence of biodiversity by providing relatively stable conditions over long periods of time, whether this capacity is facilitated by a macrorefugium or an aggregation of several microrefugia.

Such high-capacity refugia facilitate the persistence and evolution of species and are therefore strongly linked to endemism hotspots (Weber *et al.*, 2014; Harrison and Noss, 2017; Molina-Venegas *et al.*, 2017). Indeed, stable environments as offered by refugia are considered a major contributing formation to many of the 36 global biodiversity hotspots, each of which has >1500 endemic species (Myers *et al.*, 2000; Harrison and Noss, 2017). Despite this link, the concept of a refugium is independently relevant for conservation planning, because refugia of

lower capacity may still contribute to species survival during environmental change by being holdouts and stepping stones (Keppel and Wardell-Johnson, 2015), and because many past refugia may not remain stable under future anthropogenic climate change (Mokany *et al.*, 2017). As a result, both endemism hotspots and refugia are key entities for biodiversity conservation under environmental change (Myers *et al.*, 2000; Keppel and Wardell-Johnson, 2012; Morelli *et al.*, 2016).

Effective conservation requires a good understanding of the ecological and evolutionary processes shaping biotic communities (Balmford and Cowling, 2006). Plant functional traits can provide such insights, especially when combined with phylogenetic analyses (Kooyman *et al.*, 2011; Pavoine and Bonsall, 2011; Molina-Venegas *et al.*, 2015). Functional trait studies have the potential to detect contemporary ecological mechanisms driving community assembly (Lavorel and Garnier, 2002; Violle *et al.*, 2007; Götzenberger *et al.*, 2012) and to inform on the ‘evolutionary heritage’ of current trait patterns (Molina-Venegas *et al.*, 2015, 2017; de Bello *et al.*, 2017).

However, few studies have investigated plant functional traits within endemism hotspots or refugia (see Table 1 for examples). Furthermore, the complexity of ecological and evolutionary processes often prevents clear predictions of trait patterns. For

TABLE 1. Potential plant functional traits that should contribute to the unique functional signature of refugia in general, and to that of mesic (wetter) and pyric (lower fire frequency) refugia in particular. Refugia retain more stable environmental conditions, allowing on-spot persistence of plants over evolutionary time scales (e.g. Australian Wet Tropics, Brazilian campos rupestre). Note that this table provides examples and is not an exhaustive list

Trait	Expectations for trait in refugium	Example references
<i>Traits associated with generally more stable and favourable environmental conditions</i>		
Lifespan	More long-lived plants due to stable conditions	Bhagwat and Willis (2008); Mosblech <i>et al.</i> (2011); De Smedt <i>et al.</i> (2018)
Reproduction type	Prevalence of vegetative (less genetic variation) over riskier sexual reproduction	Dayrell <i>et al.</i> (2017); Jiménez-Alfaro <i>et al.</i> (2016)
Seed dormancy	Low dormancy associated with lower investment in sexual reproduction	Dayrell <i>et al.</i> (2017)
Seed size & mass	Large, heavy seeds due to less need for long-distance dispersal	Rossetto and Kooyman (2005); Bhagwat and Willis (2008); Kooyman <i>et al.</i> (2011); Weber <i>et al.</i> (2014)
<i>Traits associated with consistently cooler and moister (more mesic) conditions, as found on north-facing slopes in the Northern Hemisphere</i>		
Plant height	Small plants associated with ecological limits imposed by cold, wind stress and high elevations	Doležal <i>et al.</i> (2012); Copeland and Harrison (2015)
Specific leaf area (SLA)	High SLA as a result of reduced sclerophylly and more acquisitive nutrient uptake strategies	Spasojevic <i>et al.</i> (2013); Copeland and Harrison (2015)
Dispersal mode	Low proportion of wind-dispersed species, related to more investments in on-spot persistence	Copeland and Harrison (2015)
<i>Traits associated with consistently lower fire frequency as found on some Australian rocky outcrops</i>		
Fire response (seeders vs. resprouters)	Persistence of obligate-seeders (killed by fire)	Clarke (2002); Enright <i>et al.</i> (2014)
Serotiny (seed storage in canopy and release after fire)	Prevalence of serotinous plants, a less resilient recruitment strategy to cope with changing fire regimes	Enright <i>et al.</i> (2014)

example, the same process (e.g. competition) may generate different patterns (both trait convergence and divergence), or the same trait pattern may be produced by different mechanisms (see de Bello *et al.*, 2012 for details). In addition, various ecological processes operate simultaneously and at different scales, further complicating the detection of prevalent mechanisms (de Bello *et al.*, 2012; Götzenberger *et al.*, 2012; Spasojevic and Suding, 2012; Gross *et al.*, 2013). Coupling trait data with phylogenetic analyses can help to disentangle the various eco-evolutionary processes determining trait expression (Molina-Venegas *et al.*, 2015, 2017; Dayrell *et al.*, 2017; de Bello *et al.*, 2017).

Despite the current limitations, i.e. lack of trait data and challenges to infer processes from trait patterns, we argue that the inherent environmental stability of refugia should create unique combinations of traits that could provide important insights about eco-evolutionary processes at the community level, especially when combined with phylogenetic data. Endemism hotspots should also be associated with these unique functional and phylogenetic characteristics, due to the aforementioned contribution of refugia to their formation. It has been argued that a whole-community, trait-based approach is urgently needed and could make valuable contributions to understanding evolution and ecology in endemism hotspots and refugia (Hampe *et al.*, 2013; Harrison and Noss, 2017). We therefore propose a coherent conceptual framework to investigate the unique functional characteristics of these entities through systematic integration of functional and phylogenetic analyses.

We propose that the consistent, long-term, eco-evolutionary selective forces in endemism hotspots and refugia produce a functional signature potentially characterized by (1) distinct values and combinations of traits, (2) higher functional diversity (FD) and (3) functionally similar traits belonging to distantly related lineages. We argue that implementation of the

proposed framework will produce essential insights about the eco-evolutionary functioning of endemism hotspots and refugia. Furthermore, we highlight three important applications of the functional signature: (1) description of the functional composition, (2) comparison of functional characteristics, and (3) inference of ecological and evolutionary drivers of community assembly in endemism hotspots and refugia, especially when compared with the surrounding landscape (Fig. 2). Such knowledge could be applied to predicting likely past and future responses to environmental changes (e.g. climate, land-use) of plant species and communities in endemism hotspots and refugia. However, as a first step, an understanding of the spatial, temporal and environmental context for the endemism hotspots or refugia under consideration is needed.

CLARIFYING THE CONTEXT

Spatial and temporal parameters define endemism hotspots and refugia (Myers *et al.*, 2000; Bennett and Provan, 2008; Keppel and Wardell-Johnson, 2015). The location of these habitats may differ among taxonomic groups (Stewart *et al.*, 2010; Mosblech *et al.*, 2011; Howard *et al.*, 2015). For example, while the Southwest Pacific Islands are a hotspot for plant endemism (Keppel *et al.*, 2016; Ibanez *et al.*, 2018), this is not the case for mammals (Flannery, 1995). Furthermore, a refugium for cold-adapted species may not be one for species adapted to warmer conditions (Bátori *et al.*, 2017; Mokany *et al.*, 2017).

The spatial grain used in a study of endemism hotspots and refugia is of central importance and needs to be appropriate for the target organism, as demonstrated in the identification of suitable future habitats in the Californian Floristic Province (Ackerly *et al.*, 2010; Franklin *et al.*, 2013). In addition,

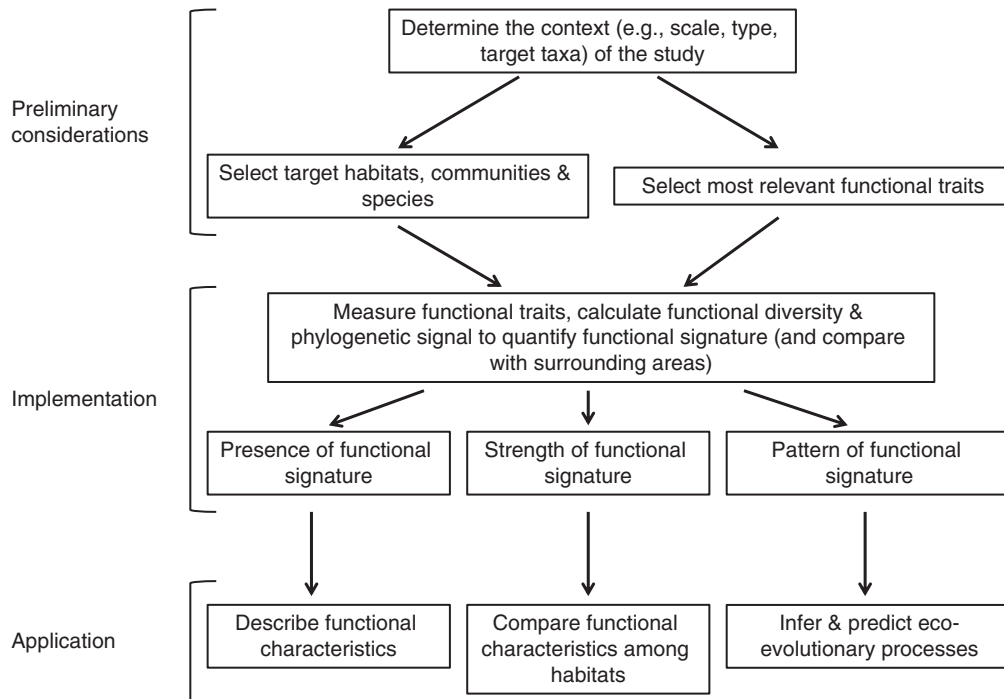


FIG. 2. A conceptual framework for integrating functional traits in research on endemism hotspots and refugia using the functional signature.

endemism hotspots and refugia can differ considerably in geographical size. For example, refugia can range from large areas facilitating the persistence of entire remnant ecosystems (i.e. macrorefugia; [Kooyman et al., 2011](#); [Dayrell et al., 2017](#); [Molina-Venegas et al., 2017](#)) to unique microhabitats supporting specific taxa and local biotic communities (i.e. microrefugia; [Rull, 2009](#); [Stewart et al., 2010](#); [Mosblech et al., 2011](#)).

Time is another relevant factor when considering the dynamics of endemism hotspots and refugia ([Keppel et al., 2012](#)). For example, endemism hotspots may be of varying age, affecting the proportion of palaeo- and neoendemic species ([Kraft et al., 2010](#); [Molina-Venegas et al., 2017](#)). Furthermore, refugia are known to fluctuate through time with regard to size and prevalent environmental conditions ([Graham et al., 2010](#); [Keppel and Wardell-Johnson, 2015](#); [Mokany et al., 2017](#)). Some refugia are indeed transient, providing environmental conditions that are unique from the surrounding landscape only for a limited period ([Graham et al., 2010](#); [Keppel and Wardell-Johnson, 2015](#)).

Finally, it is key to consider the key environmental stressor(s) a refugium provides relief from, when compared to the surrounding landscape ([Keppel et al., 2012](#); [Reside et al., 2014](#); [Table 1](#)). For example, mesic refugia buffer against increasing aridification ([Byrne, 2008](#); [Mosblech et al., 2011](#); [McLaughlin et al., 2017](#)), thermal refugia provide relatively stable temperatures through time ([Bhagwat and Willis, 2008](#); [Stewart et al., 2010](#); [Dobrowski, 2011](#)) and pyric refugia have a lower frequency of fire ([Clarke, 2002](#); [Schwilk and Keeley, 2006](#); [De Smedt et al., 2018](#)).

THE FUNCTIONAL SIGNATURE

Biotic communities are shaped by ecological and evolutionary processes, such as species coexistence and filtering, according

to the prevailing biotic interactions and environmental conditions ([Fukami et al., 2005](#); [de Bello et al., 2012](#); [Spasojevic and Suding, 2012](#)). The ecological and evolutionary histories of plant communities are reflected in the life histories and functional trait compositions of organisms ([Weiher and Keddy, 1995](#); [Díaz and Cabido, 1997](#)). As a result, communities generally display unique sets of functional characteristics that relate to the major abiotic and biotic drivers and are manifested in trait values and functional metrics. These distinct trait values and functional metrics define the functional signature of a community ([Hunter et al., 2004](#); [Pakeman et al., 2009](#)).

In the context of both endemism hotspots and refugia, functional traits and phylogeny should reflect the prevalent evolutionary and ecological processes associated with long-term stability and insularity ([Kooyman et al., 2011](#); [Molina-Venegas et al., 2015](#); [Fig. 1](#)). Phylogenies should reflect the long-term persistence of lineages, reflected in high palaeoendemism ([Mishler et al., 2014](#); [Molina-Venegas et al., 2017](#); [Smyčka et al., 2017](#)). Furthermore, the environmental stability of these entities imposes a cascade of abiotic and biotic trait filters at different spatial scales, as in any other ecosystem ([de Bello et al., 2012](#); [Götzenberger et al., 2012](#)). This eco-evolutionary, continuous and consistent filtering process should select for species more distantly related phylogenetically and characterized by unique, highly conserved functional traits that are adapted to the stable environmental conditions inside the endemism hotspot or refugium (e.g. [Dayrell et al., 2017](#); [Molina-Venegas et al., 2017](#)), compared to similar habitats in the less stable surrounding landscape ([Costa et al., 2018](#); [Fig. 1](#)).

These unique and conserved functional traits should be reflected in the expression (values and range), combinations and FD of traits ([Figs 1 and 2](#)). Traits associated with poor

dispersal, which should be favoured in environments with long-term stability, have indeed been found to be more prevalent in refugia (Bhagwat and Willis, 2008; Weber *et al.*, 2014; Costa *et al.* 2018). Similarly, the *campo rupestre* grasslands in Brazil, which are considered an endemism hotspot and macrorefugium (Silveira *et al.*, 2016; Mucina, 2018) that has experienced long-term stability, have a very high proportion of species with non-dormant seeds when compared with communities outside this endemism hotspot (Dayrell *et al.*, 2017).

The long-term environmental stability of endemism hotspots and refugia should also influence FD patterns (Fig. 1). FD is defined as the extent of trait variability in a unit of study (Petchev and Gaston, 2002; Villéger *et al.*, 2008; Laliberté and Legendre, 2010). Furthermore, environmental stability should facilitate strong biotic interactions (e.g. competition, facilitation within and among species), allowing for fine-tuning of plant–plant interactions at both habitat and micro-habitat scales (Kooyman *et al.*, 2011; de Bello *et al.*, 2012). These interactions, and continuously favourable environmental conditions, should facilitate the persistence of species and functional traits that are purged from the less stable surrounding landscape (Fig. 1). We suggest that endemism hotspots and refugia should therefore exhibit higher FD values (see Ordoñez and Svenning, 2015). However, as mentioned earlier, trait patterns can be hard to predict and may not be linked to a single, prevalent ecological process (de Bello *et al.*, 2012; Spasojevic and Suding, 2012; Gross *et al.*, 2013). Therefore, FD may not always be higher inside endemism hotspots and refugia.

Functional redundancy (FRed) measures the degree to which similar traits are present in multiple species of an assemblage and indicates the degree to which organisms have evolved to carry out similar functional roles (Rosenfeld, 2002; Laliberté *et al.*, 2010). While FRed would be expected to differ inside and outside of endemism hotspots and refugia, such patterns are challenging to predict, and no study, to our knowledge, has investigated this. For example, similar functional characteristics may be selected for in traits that are sensitive to stable environmental conditions, producing higher FRed values. Alternatively, stability may facilitate the persistence of traits that disappear outside endemism hotspots and refugia, reducing FRed values. Detailed studies will be required to determine the tendencies of FRed in refugia and endemism hotspots, and we therefore have not made concrete predictions here.

Traits in endemism hotspots and refugia should also be strongly linked to evolutionary history, due to the evolutionary constraints imposed by persistent stability and isolation. The evolutionary effect on functional traits can be investigated either by jointly examining separate functional and phylogenetic patterns (Kooyman *et al.*, 2011; Molina-Venegas *et al.*, 2015), by determining the variation in a trait explained by phylogeny (Desclaves *et al.*, 2003) or by quantifying the phylogenetic signal in trait expression (Blomberg *et al.*, 2003; Dayrell *et al.*, 2017; Molina-Venegas and Rodríguez, 2017). A strong phylogenetic signal indicates co-occurring species that are more closely related and more functionally similar to each other than expected by chance (Blomberg *et al.*, 2003, Molina-Venegas and Rodríguez, 2017). However, phylogenetic patterns of communities can be strongly influenced by dispersal and the evolutionary history of immigrants (Taylor and Keller, 2007; Wilson *et al.*, 2009).

Endemism hotspots and refugia should therefore have a distinct functional signature (Figs 1 and 2). We hypothesize that biota in these entities should exhibit the following characteristics (when compared to the surrounding, less stable landscape of the same habitat type):

- (1) different trait expression and unique suites of functional traits,
- (2) greater FD, and
- (3) functionally similar traits belonging to deeply related lineages in phylogenetic trees.

These hypotheses should be rigorously tested, as should patterns of FRed, to determine whether these are indeed consistent features of refugia. Whether or not these predictions are supported, results will provide essential insights into the characteristics and eco-evolutionary functioning of refugia and endemism hotspots.

USING THE FUNCTIONAL SIGNATURE

As mentioned above, specifying the context is key when studying endemism hotspots or refugia. It is a crucial first step that will facilitate selection of the most appropriate functional traits, i.e. those expected to be sensitive to key environmental stressors and ecosystem properties (Fig. 2). For example, seed size and seed mass are good candidate traits for quantifying the functional signature of refugia and endemism hotspots in the tropical and subtropical rain forests of eastern Australia, which experienced severe contractions during the glacial cycles (Rossetto and Kooyman, 2005; Kooyman *et al.*, 2011; Weber *et al.*, 2014; Table 1).

Once selected, functional traits can be measured; FD and the phylogenetic signal can be calculated in comparable habitats inside and outside of endemism hotspots and refugia, e.g. across lowland tropical rain forests. Such comparisons facilitate three key implementations for endemism hotspots and refugia: (1) describing functional characteristics, (2) quantifying and comparing the strengths of functional signatures, and (3) evaluating patterns of functional traits, FD and phylogeny to provide a better understanding of eco-evolutionary processes involved in plant community dynamics. These implementations have important applications in biogeography and conservation planning, as outlined below.

Description of the functional characteristics

While scientists agree that endemism hotspots and refugia should be functionally unique from the surrounding landscape (Keppel *et al.*, 2012; Hampe *et al.*, 2013; Harrison and Noss, 2017), no study has demonstrated this comprehensively. Bhagwat and Willis (2008) found that species restricted to high-capacity, southern macrorefugia in Europe during the last glacial maximum have unique functional traits, namely the predominance of long-lived plants with large seeds, which differ considerably from plants believed to have persisted in northern microrefugia (Mosblech *et al.*, 2011; Table 1). These insights highlight the importance of improving our understanding of how functional characteristics shape endemism hotspots and different types of refugia.

Functional characteristics should be linked to the phylogeny of species in the communities, as this can provide additional insights. For example, in the *campo rupestre*, diversity in dormancy strategies was predominantly found near the base of the phylogenetic tree, suggesting that dormancy traits were strongly selected for in this refugium (Dayrell *et al.*, 2017). Furthermore, ignoring the evolutionary effects on traits can lead to false conclusions (Li and Ives, 2017), as can focusing solely on phylogenetic patterns (Costion *et al.*, 2015).

Comparing the strengths of functional signatures

The strength of functional signatures, i.e. the magnitude of differences in functional traits, can be compared between endemism hotspots or refugia and the surrounding landscape (Fig. 2). As a first step, it is important to determine which aspects (i.e. functional traits, FD, phylogeny) of the functional signature most strongly differentiate the habitats. The functional signatures of different endemism hotspots and refugia can then be compared by focusing on the magnitude of differences in these characteristics.

The strength of the functional signature could be used to indicate the capacity of refugia to buffer environmental change and thereby to facilitate the persistence of biota, which is relevant to the prioritization process in conservation planning (Keppel *et al.*, 2015). Assuming that environmentally stable refugia have more distinctive functional characteristics, the functional signature should be an indicator of the capacity of refugia to facilitate the persistence of biodiversity under environmental change. In this context, the magnitude of differences in FD within and outside refugia, and among different refugia, should be particularly informative, as FD is strongly correlated with functional resilience (Hooper *et al.*, 2005). However, few refugia can provide protection under opposing environmental trends (e.g. cooler and warmer climates; Mokany *et al.*, 2017). Therefore, caution must be exercised when projecting the capacity of refugia into future climates that are novel for the region under consideration.

Using functional signatures to infer and predict eco-evolutionary processes of community assembly

Integrating patterns of FD (i.e. trait convergence and divergence), and potentially FRed, with phylogenetic data can provide a broader view about ecological and evolutionary processes in plant communities of endemism hotspots and refugia (Lavorel and Garnier, 2002; Molina-Venegas *et al.*, 2015; de Bello *et al.*, 2017; Harrison and Noss, 2017). Analyses of functional trait patterns can be cautiously used to infer the prevalent ecological mechanisms shaping community assembly, such as habitat filtering, niche differentiation and facilitation (de Bello *et al.*, 2012; Spasojevic and Suding, 2012; Spasojevic *et al.*, 2014), and to quantify the relative role of resilience (Rosenfeld, 2002; Hooper *et al.*, 2005). Additionally, combining trait data and phylogenetic patterns can inform about evolutionary effects on traits (Blomberg *et al.*, 2003; Kooyman *et al.*, 2011; Molina-Venegas *et al.*, 2015), providing important information about the history and functioning of endemism hotspots and refugia (Dayrell *et al.*, 2017; Harrison and Noss, 2017; Fig. 2).

The proposed eco-evolutionary functional signature approach to the study of endemism hotspots and refugia is also potentially powerful for making predictions about the likely impacts of projected environmental change on plant species, traits and communities. For example, the grasslands of the Brazilian *campo rupestre* have experienced long-term stability (Silveira *et al.*, 2016) in edaphic conditions (extremely nutrient-poor soils), climate (arid and seasonal precipitation) and disturbance (predictable and frequent fire regime). Plant species and communities in these grasslands (1) are highly stress-tolerant (Negreiros *et al.*, 2014), (2) invest little in seed production with low seed dormancy and (3) are phylogenetically distantly related (Dayrell *et al.*, 2017).

The *campo rupestre* is projected to experience increasing aridification and altered fire regimes, with some of these changes occurring relatively rapidly. While the trait conservatism associated with long-term stability in the *campo rupestre* may enhance ecosystem resilience, adaptations to predictable, but stressful, environmental conditions may increase the vulnerability of the flora to collapse under abrupt, swift climate changes (Díaz *et al.*, 2013; Cornelissen and Makoto, 2014; Dayrell *et al.*, 2017). Including additional traits that are informative about above- and below-ground plant strategies related to nutrient and water acquisition, retention and use (e.g. specific leaf area, fine roots, mycorrhizal associations), as well as to resource storage and resprouting ability (e.g. bark thickness, bud bank, rhizomes), could provide valuable information (Pausas *et al.*, 2018). These functional characteristics have been shown to be highly relevant in the Southwest Australian biodiversity hotspot that experiences similar environmental pressures (Enright *et al.*, 2014; Zemunik *et al.*, 2015; Silveira *et al.*, 2016).

CONCLUDING REMARKS

We have provided a conceptual operational framework that facilitates the integration of plant functional traits in studies of endemism hotspots and refugia. This approach allows the systematic integration of ecological characteristics (i.e. functional traits) and evolutionary information (i.e. phylogenetic data) when studying these entities, addressing a major gap in studies of endemism hotspots and refugia (Hampe *et al.*, 2013; Harrison and Noss, 2017). Despite the existing limitations (i.e. lack of trait data, issues in disentangling ecological processes from trait patterns), implementing the proposed eco-evolutionary framework will advance our understanding of endemism hotspots and refugia – especially of the processes shaping biotic patterns. This should assist in predicting the effects of environmental change on these entities, which is likely to be the most important application of our framework, given the pervasive impacts of climate change (Pecl *et al.*, 2017) and the relevance of endemism hotspots and refugia as safe havens for biodiversity (Keppel *et al.*, 2012; Harrison and Noss, 2017).

ACKNOWLEDGEMENTS

We thank Etienne Laliberté (University of Montreal, Canada), Jodi Price (Charles Sturt University, Australia), Andy Gillison (Center

for Biodiversity Management, Yangaburra, Australia), Marko J. Spasojevic (University of California Riverside, USA) and Camilla Wellstein (Free University of Bozen, Italy) for insightful comments on early versions of the manuscript. We also acknowledge the helpful comments by Mick Ashcroft (University of Wollongong), one anonymous reviewer and Trude Schwarzacher (handling editor). The authors acknowledge the following funding sources: an ARC Linkage Project (LP0990914) supported by the Australian Research Council, Alexander von Humboldt Fellowship for experienced researchers to GK; Endeavour Europe Award (Australian Government), CIPRS (Curtin University), SIRF, UPAIS, UWA Safety-Net To-Up, and Ad-Hoc scholarship schemes (The University of Western Australia) to GO; Iluka Chair in Vegetation Science and Biogeography at The University of Western Australia, and an ARC linkage project to LM; NASA grant 3-V4B3111 and the Pacific Southwest Regional Center of Excellence for Vector-Borne Diseases funded by the U.S. Centers for Disease Control and Prevention (Cooperative Agreement 1U01CK000516) to MM.

LITERATURE CITED

- Ackerly DD, Loarie SR, Cornwell WK, et al. 2010. The geography of climate change: implications for conservation biogeography. *Diversity and Distributions* 16: 476–487.
- Ashcroft MB. 2010. Identifying refugia from climate change. *Journal of Biogeography* 37: 1407–1413.
- Ashcroft MB, Chisholm LA, French KO. 2009. Climate change at the landscape scale: predicting fine-grained spatial heterogeneity in warming and potential refugia for vegetation. *Global Change Biology* 15: 656–667.
- Ashcroft MB, Gollan JR, Warton DI, Ramp D. 2012. A novel approach to quantify and locate potential microrefugia using topoclimate, climatic stability, and isolation from the matrix. *Global Change Biology* 18: 1866–1879.
- Balmford A, Cowling RM. 2006. Fusion or failure? The future of conservation biology. *Conservation Biology* 20: 692–695.
- Bátori Z, Vojtkó A, Farkas T, et al. 2017. Large and small-scale environmental factors drive plant distributions in karstic microrefugia. *Annals of Botany* 119: 301–309.
- Bennett KD, Provan J. 2008. What do we mean by refugia? *Quaternary Science Reviews* 27: 2449–2455.
- Bhagwat SA, Willis KJ. 2008. Species persistence in northerly glacial refugia of Europe: a matter of chance or biogeographical traits? *Journal of Biogeography* 35: 464–482.
- Blomberg S, Garland T Jr, Ives AR. 2003. Testing for phylogenetic signal in comparative data: behavioral traits are more labile. *Evolution* 57: 717–745.
- Byrne M. 2008. Evidence for multiple refugia at different time scales during Pleistocene climatic oscillations in southern Australia inferred from phylogeography. *Quaternary Science Reviews* 27: 2576–2585.
- Clarke PJ. 2002. Habitat islands in fire-prone vegetation: do landscape features influence community composition? *Journal of Biogeography* 29: 677–684.
- Copeland SM, Harrison SP. 2015. Identifying plant traits associated with topographic contrasts in a rugged and diverse region (Klamath-Siskiyou Mts, OR, USA). *Ecography* 38: 569–577.
- Cornelissen JHC, Makoto K. 2014. Winter climate change, plant traits and nutrient and carbon cycling in cold biomes. *Ecological Research* 29: 517–527.
- Costa GC, Hampe A, Ledru MP, et al. 2018. Biome stability in South America over the last 30 kyr: inferences from long-term vegetation dynamics and habitat modelling. *Global Ecology and Biogeography* 27: 285–297.
- Costion CM, Edwards W, Ford AJ, et al. 2015. Using phylogenetic diversity to identify ancient rain forest refugia and diversification zones in a biodiversity hotspot. *Diversity and Distributions* 21: 279–289.
- Dayrell RLC, Garcia QS, Negreiros D, Baskin CC, Baskin JM, Silveira FAO. 2017. Phylogeny strongly drives seed dormancy and quality in a climatically buffered hotspot for plant endemism. *Annals of Botany* 119: 267–277.
- de Bello F, Price J, Münkemüller T, et al. 2012. Functional species pool framework to test for biotic effects on community assembly. *Ecology* 93: 2263–2273.
- de Bello F, Šmilauer P, Diniz-Filho JAF, et al. 2017. Decoupling phylogenetic and functional diversity to reveal hidden signals in community assembly. *Methods in Ecology and Evolution* 8: 1200–1211.
- De Smedt P, Ottaviani G, Wardell-Johnson G, Šýkora KV, Mucina L. 2018. Habitat heterogeneity promotes intraspecific trait variability of shrub species in Australian granite inselbergs. *Folia Geobotanica* 53: 133–145.
- Desdevises Y, Legendre P, Azouzi L, Morand S. 2003. Quantifying phylogenetically structured environmental variation. *Evolution* 57: 2647–2652.
- Díaz S, Cabido M. 1997. Plant functional types and ecosystem function in relation to global change. *Journal of Vegetation Science* 8: 463–474.
- Díaz S, Purvis A, Cornelissen JHC, et al. 2013. Functional traits, the phylogeny of function, and ecosystem service vulnerability. *Ecology and Evolution* 3: 2958–2975.
- Dobrowski SZ. 2011. A climatic basis for microrefugia: the influence of terrain on climate. *Global Change Biology* 17: 1022–1035.
- Doležal J, Altman J, Kopecký M, et al. 2012. Plant diversity changes during the postglacial in east Asia: insights from forest refugia on Halla Volcano, Jeju Island. *PLoS ONE* 7: e33065.
- Enright NJ, Fontaine JB, Lamont BB, Miller BP, Westcott VC. 2014. Resistance and resilience to changing climate and fire regime depend on plant functional traits. *Journal of Ecology* 102: 1572–1581.
- Flannery T. 1995. *Mammals of the South-West Pacific & Moluccan Islands*. Ithaca, NY: Cornell University Press.
- Franklin J, Davis FW, Ikegami M, et al. 2013. Modeling plant species distributions under future climates: how fine scale do climate projections need to be? *Global Change Biology* 19: 473–483.
- Fukami T, Bezemer TM, Mortimer SR, van der Putten WH. 2005. Species divergence and trait convergence in experimental plant community assembly. *Ecology Letters* 8: 1283–1290.
- Götzenberger L, de Bello F, Bräthen KA, et al. 2012. Ecological assembly rules in plant communities—approaches, patterns and prospects. *Biological Reviews* 87: 111–127.
- Graham CH, VanDerWal J, Phillips SJ, Moritz C, Williams SE. 2010. Dynamic refugia and species persistence: tracking spatial shifts in habitat through time. *Ecography* 33: 1062–1069.
- Gross N, Börger L, Soriano-Morales SI, et al. 2013. Uncovering multiscale effects of aridity and biotic interactions on the functional structure of Mediterranean shrublands. *Journal of Ecology* 101: 637–649.
- Hampe A, Rodríguez-Sánchez F, Dobrowski S, Hu FS, Gavin DG. 2013. Climate refugia: from the Last Glacial Maximum to the twenty-first century. *New Phytologist* 197: 16–18.
- Harrison S, Noss R. 2017. Endemism hotspots are linked to stable climatic refugia. *Annals of Botany* 119: 207–214.
- Hooper DU, Chapin FS III, Ewel JJ, et al. 2005. Effects of biodiversity on ecosystem functioning: a consensus of current knowledge. *Ecological Monographs* 75: 3–35.
- Howard JK, Klausmeyer KR, Fesenmyer KA, et al. 2015. Patterns of freshwater species richness, endemism, and vulnerability in California. *PLoS ONE* 10: e0130710.
- Hunt R, Hodgson JG, Thompson K, et al. 2004. A new practical tool for deriving a functional signature for herbaceous vegetation. *Applied Vegetation Science* 7: 163–170.
- Ibanez T, Blanchard E, Hequet V, et al. 2018. High endemism and stem density distinguish New Caledonian from other high-diversity rainforests in the Southwest Pacific. *Annals of Botany* 121: 25–35.
- Jiménez-Alfaro B, García-Calvo L, García P, Acebes JL. 2016. Anticipating extinctions of glacial relict populations in mountain refugia. *Biological Conservation* 201: 243–251.
- Keppel G, Wardell-Johnson GW. 2012. Refugia: keys to climate change management. *Global Change Biology* 18: 2389–2391.
- Keppel G, Wardell-Johnson GW. 2015. Refugial capacity defines holdouts, microrefugia and stepping-stones: a response to Hannah et al. *Trends in Ecology and Evolution* 30: 233–234.
- Keppel G, Van Niel KP, Wardell-Johnson GW, et al. 2012. Refugia: identifying and understanding safe havens for biodiversity under climate change. *Global Ecology and Biogeography* 21: 393–404.

- Keppel G, Mokany K, Wardell-Johnson GW, Phillips BL, Welbergen JA, Reside A. 2015. The capacity of refugia for conservation planning under climate change. *Frontiers in Ecology and the Environment* 13: 106–112.
- Keppel G, Gillespie TW, Ormerod P, Fricker GA. 2016. Habitat diversity predicts orchid diversity in the tropical south-west Pacific. *Journal of Biogeography* 43: 2332–2342.
- Kier G, Kreft H, Lee TM, et al. 2009. A global assessment of endemism and species richness across island and mainland regions. *Proceedings of the National Academy of Sciences of the United States of America* 106: 9322–9327.
- Kooyman R, Rossetto M, Cornwell WK, Westoby M. 2011. Phylogenetic tests of community assembly across regional to continental scales in tropical and subtropical rain forests. *Global Ecology and Biogeography* 20: 707–716.
- Kraft NJ, Baldwin BG, Ackerly DD. 2010. Range size, taxon age and hotspots of neoendemism in the California flora. *Diversity and Distributions* 16: 403–413.
- Laliberté E, Legendre P. 2010. A distance-based framework for measuring functional diversity from multiple traits. *Ecology* 91: 299–305.
- Laliberté E, Wells JA, DeClerck F, et al. 2010. Land-use intensification reduces functional redundancy and response diversity in plant communities. *Ecology Letters* 13: 76–86.
- Lavorel S, Garnier E. 2002. Predicting changes in community composition and ecosystem functioning from plant traits: revisiting the Holy Grail. *Functional Ecology* 16: 545–556.
- Li D, Ives AR. 2017. The statistical need to include phylogeny in trait-based analyses of community composition. *Methods in Ecology and Evolution* 8: 1192–1199.
- Mackey B, Berry S, Hugh S, Ferrier S, Harwood TD, Williams KJ. 2012. Ecosystem greenspots: identifying potential drought, fire, and climate change micro-refuges. *Ecological Applications* 22: 1852–1864.
- McLaughlin BC, Ackerly DD, Klos PZ, Natali J, Dawson TE, Thompson SE. 2017. Hydrologic refugia, plants, and climate change. *Global Change Biology* 23: 2941–2961.
- Médail F, Diadema K. 2009. Glacial refugia influence plant diversity patterns in the Mediterranean Basin. *Journal of Biogeography* 36: 1333–1345.
- Mishler BD, Knerr N, González-Orozco CE, Thornhill AH, Laffan SW, Miller JT. 2014. Phylogenetic measures of biodiversity and neo- and paleo-endemism in Australian *Acacia*. *Nature Communications* 5: 4473.
- Mokany K, Jordan GJ, Harwood TD, et al. 2017. Past, present and future refugia for Tasmania's palaeoendemic flora. *Journal of Biogeography* 44: 1537–1546.
- Molina-Venegas R, Rodríguez MA. 2017. Revisiting phylogenetic signal; strong or negligible impacts of polytomies and branch length information? *BMC Evolutionary Biology* 17: 53.
- Molina-Venegas R, Aparicio A, Slingsby JA, Lavergne S, Arroyo J. 2015. Investigating the evolutionary assembly of a Mediterranean biodiversity hotspot: deep phylogenetic signal in the distribution of eudicots across elevational belts. *Journal of Biogeography* 42: 507–518.
- Molina-Venegas R, Aparicio A, Lavergne S, Arroyo J. 2017. Climatic and topographical correlates of plant palaeo- and neoendemism in a Mediterranean biodiversity hotspot. *Annals of Botany* 119: 229–238.
- Morelli TL, Daly C, Dobrowski SZ, et al. 2016. Managing climate change refugia for climate adaptation. *PLoS ONE* 11: e0159909.
- Mosblech NAS, Bush MB, van Woesik R. 2011. On metapopulations and microrefugia: palaeoecological insights. *Journal of Biogeography* 38: 419–429.
- Mucina L. 2018. Vegetation of Brazilian campos rupestre on siliceous substrates and their global analogues. *Flora* 238: 11–23.
- Myers N, Mittermeier RA, Mittermeier CG, da Fonseca GAB, Kent J. 2000. Biodiversity hotspots for conservation priorities. *Nature* 403: 853–858.
- Negreiros D, Le Stradic S, Fernandes GW, Rennó HC. 2014. CSR analysis of plant functional types in highly diverse tropical grasslands of harsh environments. *Plant Ecology* 215: 379–388.
- Ordóñez A, Svenning J-C. 2015. Geographic patterns in functional diversity deficits are linked to glacial-interglacial climate stability and accessibility. *Global Ecology and Biogeography* 24: 826–837.
- Pakeman RJ, Lepš J, Kleyer M, Lavorel S, Garnier E, The VISTA Consortium. 2009. Relative climatic, edaphic and management controls of plant functional trait signatures. *Journal of Vegetation Science* 20: 148–159.
- Pausas JG, Lamont BB, Paula S, Appezzato-da-Glória B, Fidelis A. 2018. Unearthing belowground bud banks in fire-prone ecosystems. *New Phytologist* 217: 1435–1448.
- Pavoine S, Bonsall MB. 2011. Measuring biodiversity to explain community assembly: a unified approach. *Biological Reviews* 86: 792–812.
- Pecl GT, Araújo MB, Bell JD, et al. 2017. Biodiversity redistribution under climate change: impacts on ecosystems and human well-being. *Science* 355: eaai9214.
- Petchey OL, Gaston KJ. 2002. Functional diversity (FD), species richness and community composition. *Ecology Letters* 5: 402–411.
- Reside AE, Welbergen JA, Phillips BL, et al. 2014. Characteristics of climate change refugia for Australian biodiversity. *Austral Ecology* 39: 887–897.
- Rosenfeld JS. 2002. Functional redundancy in ecology and conservation. *Oikos* 98: 156–162.
- Rossetto M, Kooyman RM. 2005. The tension between dispersal and persistence regulates the current distribution of rare palaeo-endemic rain forest flora: a case study. *Journal of Ecology* 93: 906–917.
- Rull V. 2009. Microrefugia. *Journal of Biogeography* 36: 481–484.
- Sandel B, Monnet A-C, Govaerts R, Vorontsova M. 2017. Late Quaternary climate stability and the origins and future of global grass endemism. *Annals of Botany* 119: 279–288.
- Schwilk DW, Keeley JE. 2006. The role of fire refugia in the distribution of *Pinus sabiniana* (Pinaceae) in the southern Sierra Nevada. *Madroño* 53: 364–372.
- Silveira FAO, Negreiros D, Barbosa NPU, et al. 2016. Ecology and evolution of plant diversity in the endangered campo rupestre: a neglected conservation priority. *Plant and Soil* 403: 129–152.
- Smyčka J, Roquet C, Renaud J, Thuiller W, Zimmermann NE, Lavergne S. 2017. Disentangling drivers of plant endemism and diversification in the European Alps – A phylogenetic and spatially explicit approach. *Perspectives in Plant Ecology, Evolution and Systematics* 28: 19–27.
- Spasojevic M, Suding KN. 2012. Inferring community assembly mechanisms from functional diversity patterns: the importance of multiple assembly processes. *Journal of Ecology* 100: 652–661.
- Spasojevic M, Bowman WD, Humphries HC, Seastedt TR, Suding KN. 2013. Changes in alpine vegetation over 21 years: are patterns across a heterogeneous landscape consistent with predictions? *Ecosphere* 4: 1–18.
- Spasojevic M, Harrison S, Day HW, Southard RJ. 2014. Above- and below-ground biotic interactions facilitate relocation of plants into cooler environments. *Ecology Letters* 17: 700–709.
- Stewart JR, Lister AM, Barnes I, Dalén L. 2010. Refugia revisited: individualistic responses of species in space and time. *Proceedings of the Royal Society London, B: Biological Sciences* 277: 661–671.
- Svenning J-C, Normand S, Skov F. 2008. Postglacial dispersal limitation of widespread forest plant species in nemoral Europe. *Ecography* 31: 316–326.
- Taberlet P, Cheddadi R. 2002. Quaternary refugia and persistence of biodiversity. *Science* 297: 2009–2010.
- Taberlet P, Fumagalli L, Wust-Saucy A-G, Cosson J-F. 1998. Comparative phytogeography and postglacial colonization routes in Europe. *Molecular Ecology* 7: 453–464.
- Taylor DR, Keller SR. 2007. Historical range expansion determines the phylogenetic diversity introduced during contemporary species invasion. *Evolution* 61: 334–345.
- Tzedakis PC, Lawson IT, Frogley MR, Hewitt GM, Preece RC. 2002. Buffered tree population changes in a Quaternary refugium: evolutionary implications. *Science* 297: 2044–2047.
- Villéger S, Mason NWH, Mouillot D. 2008. New multidimensional functional diversity indices for a multifaceted framework in functional ecology. *Ecology* 89: 2290–2301.
- Violle C, Navas M-L, Vile D, et al. 2007. Let the concept of trait be functional! *Oikos* 116: 882–892.
- Weber LC, VanDerWal J, Schmidt S, McDonald WJF, Shoo LP. 2014. Patterns of rain forest plant endemism in subtropical Australia relate to stable mesic refugia and species dispersal limitations. *Journal of Biogeography* 41: 222–238.
- Weihner E, Keddy PA. 1995. Assembly rules, null models, and trait dispersion: new questions from old patterns. *Oikos* 74: 159–164.
- Wilson JRU, Dormontt EE, Prentis PJ, Lowe AJ, Richardson DM. 2009. Something in the way you move: dispersal pathways affect invasion success. *Trends in Ecology and Evolution* 24: 136–144.
- Zemunik G, Turner BL, Lambers H, Laliberté E. 2015. Diversity of plant nutrient-acquisition strategies increases during long-term ecosystem development. *Nature Plants* 1: 1–4.