

UCSF

UC San Francisco Previously Published Works

Title

Accumulation of BDCA1+ Dendritic Cells in Interstitial Fibrotic Lung Diseases and Th2-High Asthma

Permalink

<https://escholarship.org/uc/item/1fr301p8>

Journal

PLOS ONE, 9(6)

ISSN

1932-6203

Authors

Greer, Alexandra M

Matthay, Michael A

Kukreja, Jasleen

et al.

Publication Date

2014

DOI

10.1371/journal.pone.0099084

Peer reviewed



Accumulation of BDCA1⁺ Dendritic Cells in Interstitial Fibrotic Lung Diseases and Th2-High Asthma

Alexandra M. Greer¹, Michael A. Matthay², Jasleen Kukreja³, Nirav R. Bhakta⁴, Christine P. Nguyen⁴, Paul J. Wolters⁴, Prescott G. Woodruff⁴, John V. Fahy⁴, Jeoung-Sook Shin^{1*}

1 Department of Microbiology and Immunology, Sandler Asthma Basic Research Center, University of California San Francisco, San Francisco, California, United States of America, **2** Department of Medicine and Anesthesia, University of California San Francisco, San Francisco, California, United States of America, **3** Division of Cardiothoracic Surgery, University of California San Francisco, San Francisco, California, United States of America, **4** Division of Pulmonary, Critical Care, Allergy and Sleep Medicine, University of California San Francisco, San Francisco, California, United States of America

Abstract

Dendritic cells (DCs) significantly contribute to the pathology of several mouse lung disease models. However, little is known of the contribution of DCs to human lung diseases. In this study, we examined infiltration with BDCA1⁺ DCs of human lungs in patients with interstitial lung diseases or asthma. Using flow cytometry, we found that these DCs increased by 5~6 fold in the lungs of patients with idiopathic pulmonary fibrosis or hypersensitivity pneumonitis, which are both characterized by extensive fibrosis in parenchyma. The same DC subset also significantly increased in the lung parenchyma of patients with chronic obstructive pulmonary disease, although the degree of increase was relatively modest. By employing immunofluorescence microscopy using FcεRI and MHCII as the specific markers for BDCA1⁺ DCs, we found that the numbers of BDCA1⁺ DCs also significantly increased in the airway epithelium of Th2 inflammation-associated asthma. These findings suggest a potential contribution of BDCA1⁺ DCs in human lung diseases associated with interstitial fibrosis or Th2 airway inflammation.

Citation: Greer AM, Matthay MA, Kukreja J, Bhakta NR, Nguyen CP, et al. (2014) Accumulation of BDCA1⁺ Dendritic Cells in Interstitial Fibrotic Lung Diseases and Th2-High Asthma. *PLoS ONE* 9(6): e99084. doi:10.1371/journal.pone.0099084

Editor: Marco Idzko, University Hospital Freiburg, Germany

Received: July 3, 2013; **Accepted:** April 9, 2014; **Published:** June 10, 2014

Copyright: © 2014 Greer et al. This is an open-access article distributed under the terms of the Creative Commons Attribution License, which permits unrestricted use, distribution, and reproduction in any medium, provided the original author and source are credited.

Funding: MAM was supported by National Heart, Lung, and Blood Institute grant #HL51854. NRB was supported by National Institutes of Health grants F32 HL110720 and T32 HL007185. PJW was supported by the UCSF Nina Ireland Lung Disease Program. PGW was supported by a grant from Genentech and from the NIH (HL095372). AMG and JS were supported by the American Thoracic Society and the UCSF Sandler Asthma Basic Research Center. The funders had no role in study design, data collection and analysis, decision to publish, or preparation of the manuscript.

Competing Interests: The authors have read the journal's policy and have the following conflicts: PGW has received research grants from Pfizer and Genentech, serves as a consultant for Medimmune, Genentech, Merck, Boehringer-Ingelheim, Kalobios. This does not alter adherence to all the PLOS ONE policies on sharing data and materials.

* E-mail: Jeoung-Sook.Shin@ucsf.edu

Introduction

Dendritic cells (DCs) play an important role in immune surveillance in the lungs. DCs located within or beneath the airway epithelia send projections toward the lumen to capture antigens in the airway [1]. DCs also reside in alveoli and capture antigens that have reached deep into the alveolar space [2]. Mice deficient in lung DCs exhibit significant defects in developing protective immunity against respiratory antigens [3], indicating that antigen capture and subsequent presentation by lung DCs plays an important role in inducing and propagating respiratory immunity. Interestingly, a number of studies suggest that DCs also play pathologic roles in several lung diseases, at least in mouse models. In a mouse model of viral lung infection, DCs produce chemoattractants that recruit Th2 cells that mediate persistent airway inflammation and mucus production [4]. DCs also both initiate and perpetuate Th2 inflammation driven by allergens in mice [5]. Furthermore, DCs contribute to persistent inflammation in murine lungs by mediating development and maintenance of tertiary lymphoid organs, which promote local activation of T cells [6]. However, relatively little is known about the contribution of DCs to human lung diseases.

Bronchial biopsies serve as an important source of accessible human lung tissue and immunohistochemistry is an important method to examine DCs in these small tissue samples. Previously, immunohistochemical analyses using antibodies to CD11c, DC-SIGN, CD1a, or Langerin have been performed to identify DCs in human bronchial biopsies [7]. These analyses have suggested that asthma, chronic obstructive pulmonary disease, and fibrosis are associated with a significant increase in DCs [7–10]. However, recent advances in characterization of human DC subsets reveal that many of these antibodies are neither specific nor sufficiently label broad human DC subsets. For example, CD11c is not only expressed in DCs but also highly expressed in monocytes and macrophages in humans [11]. DC-SIGN was found to be only expressed in monocyte-derived DCs, at least in mice [12]. CD1a and Langerin were found to be restricted to DC subsets specifically localized in the epithelium [13]. More recently, BDCA1 was found to be specifically expressed in the major DC subset in human blood [14]. Since this finding, anti-BDCA1 antibodies have been used to label DCs in various tissues, including lungs [13,15–17]. Although this antibody labels a significant proportion of lung DC subsets, including CD1a or Langerin-expressing epithelial DCs [10,18,19], it additionally labels B cells [14]. Thus, immunohistochemistry-based methods of DC identification require an

improved staining strategy by which DCs of a broadly representative subset are labeled in a specific manner.

Another method useful for DC analysis in human lungs is flow cytometry. This method allows accurate identification of DCs by using multiple cell-specific markers and also provides a powerful means of generating quantitative analysis of the frequency of DCs. A major limitation, however, is that this method requires relatively large sized tissues due to the scarcity of DCs in the lungs. Although not common, lung transplantation is sometimes performed for patients with severe interstitial lung diseases (ILDs) [20]. Resected lungs from these patients would be very useful sources for flow cytometric analysis of DCs, which may reveal potential association of DCs with these specific diseases.

In this study, we examined by flow cytometry the prevalence of BDCA1⁺ DCs in the lungs isolated from patients with ILDs: idiopathic pulmonary fibrosis (IPF), hypersensitivity pneumonitis (HP), and chronic obstructive pulmonary disease (COPD). We also identified a new marker for BDCA1⁺ lung DCs, developed a dual-fluorescence staining strategy, and quantified the DCs in bronchial biopsies from patients with asthma [21].

Materials and Methods

Ethics

All studies were approved by the UCSF Committee on Human Research, and written informed consent was obtained from all subjects. The interstitial lung disease study was approved by the UCSF IRB #10-00198. For the asthma study, subjects also provided consent for their biospecimens to be placed in the UCSF Airway Tissue Bank IRB #11-05176 for studies. Blood samples were collected as part of a larger study approved by the UCSF IRB #10-02596.

Interstitial lung disease (ILD) study population

The study population consists of 9 patients with idiopathic pulmonary fibrosis (IPF), 7 with chronic hypersensitivity pneumonitis (HP), 7 with COPD/emphysema, and 13 without lung disease who had died from a non-pulmonary cause. All ILD diagnoses were established thorough multidisciplinary review of clinical data, radiology, and pathology. Diseased lung tissues were obtained from donors undergoing lung transplantation. Normal lung tissues were from lungs originally designated for transplantation by the Northern California Transplant Donor Network, but ultimately not used for various reasons.

Asthma study population

Asthmatic subjects had been characterized by a prior physician diagnosis of asthma, airway hyper-responsiveness (methacholine PC₂₀<8.0 mg/mL), and at least one of the following: asthma symptoms on 2 or more days per week; β -agonist use on 2 or more days per week; FEV₁ less than 85% predicted. Subjects had not taken inhaled or oral corticosteroids for 4 weeks before enrollment. Healthy control subjects had reported no lifetime history of pulmonary disease and lacked airway hyper-responsiveness. Criteria for exclusion for both healthy and asthmatic subjects included a demonstration of any previous history of lung disease other than asthma, a history of an upper or lower respiratory tract infection in the 4 weeks preceding the study enrollment visit, females who were pregnant or breast feeding, taking beta-blocker medication, current cigarette smoking or a total smoking history > 15 pack-years. Characterization of Th2-low and -high asthma was performed by microarray hierarchical clustering analysis on epithelial brushings as described previously [21].

Bronchial biopsy preparation

Endobronchial biopsy samples from healthy and steroid naïve asthmatic subjects were obtained from the Airway Tissue Bank at the University of California, San Francisco. These samples had been collected during multiple research studies performed at UCSF between 2007 and 2013 in which all characterization studies and biospecimen collection had followed standardized protocols. For immunofluorescence microscopy study, biopsies were collected at the lateral edges of 2nd to 5th-order carinae, washed in PBS, fixed in ice-cold 10% formalin, and suspended in paraffin wax. Tissue blocks were arranged with 2–6 biopsies per paraffin block and were cut at a thickness of 3 μ m. For flow cytometric analysis, biopsies were not fixed but instead digested with 1 mg/mL collagenase I (Roche) in RPMI without phenol red for 2 hours at 37 degrees, then dispersed with a syringe and passed through a cell filter. The resulting single-cell suspension was spun and resuspended in FACS buffer for staining.

Peripheral blood mononuclear cell (PBMC) isolation

Blood was collected from healthy anonymous individuals with written and informed consent. PBMCs were isolated by layering blood diluted 1:1 with HBSS over a Ficoll (GE Sciences) density gradient and subsequently centrifuging it.

Pulmonary mononuclear cell (PMC) isolation

Lungs were removed from the patient, and large vessels were perfused with PBS. The parenchyma was cut into 2 cm³ to 5 cm³ sections and placed in cold media for storage until use. Lung specimens were used within 72 hours of isolation. To prepare single cell suspensions for flow cytometry, first the lung specimen was minced with scissors in warm digestion media (20 mL HBSS with 10 mg Collagenase D [Roche] and 2 mg DNase I [Roche]). Minced tissue was rocked at 37 degrees for 45 minutes. Then the tissue was pushed through a 75 μ m-mesh cell strainer over a 50 mL falcon tube with a plunger. The resulting single-cell suspension was spun at 1300 rpm for 5 minutes and washed with HBSS, resuspended in 20 mL HBSS, and layered over 15 mL of Ficoll and spun at 2400 rpm for 20 minutes at room temperature with no brake. Red blood cells and platelets were discarded and the mononuclear cell layer was collected for FACS staining. The resulting cell population was washed once with FACS buffer before staining.

Flow cytometry

Samples were resuspended in FACS buffer (2% FBS, 0.1% sodium azide) and stained with the following mixtures of Biolegend antibodies: BDCA1-Percp/Cy5.5, CD14-APC, HLADR-Pacific Blue, CD3/19/56-FITC, CD123-PE/Cy7, and either Fc ϵ RI α -PE or mouse IgG_{2b}-PE, all at manufacturer's recommended concentrations. Some samples were stained with CD45-A700 to identify hematopoietic cells and CD203c-biotin (Biolegend, at manufacturer's recommended concentrations) followed by streptavidin-A647 (Invitrogen, at manufacturer's recommended concentration) to identify mast cells. Cells were stained with antibodies and propidium iodide (PI) (Biolegend) at 1:400 for 15 minutes at 4 degrees, washed and spun at 1300 rpm, and resuspended in FACS buffer. At least 1 \times 10⁶ cells were run on slow or medium speed on a BD LSRII machine and analyzed with Flowjo software.

Confocal microscopy

Tissue sections mounted on glass slides were rehydrated in 2 xylene baths for 5 minutes each, 2 100% Ethanol baths for 3 minutes each, and 1 bath of 95% ethanol and 1 bath of 80%

ethanol for 1 minute each. Afterwards, slides were rinsed with distilled water and dried. Samples were washed once with 10% goat serum (MP Biomedicals) with 0.05% saponin in PBS ("wash buffer") and then stained with 1:10 human IgG block for 1 hour. Slides were then washed 3 times with wash buffer for 5 minutes each and then stained for 1 hour with 1:50 anti-FcεRI (CRA-1, Biolegend) and 1:200 anti-MHCII ("DRAB" polyclonal rabbit antisera). After 1 hour, slides were washed again and stained with 1:300 goat anti-mouse Alexa 568 and goat anti-rabbit Alexa 488 (Life Technologies) for 1 hour. After rinsing with wash buffer, slides were washed 3 times with PBS and 2 times with distilled water. Slides were dried thoroughly and mounted with Prolong Gold anti-fade mounting reagent with DAPI (Life Technologies). They were then left in the dark at room temperature overnight to cure and were stored at -20 degree for imaging. Slides were imaged using a Nikon C1si confocal microscope. First, overlapping images were taken at 20x and epithelial regions were identified using FIJI software. We calculated the area in microns of the epithelium for each biopsy for each patient. Once regions of epithelium were identified, slides were imaged at 60x to identify FcεRI⁺, MHCII⁺ DCs within the noted regions of epithelium. The numbers of double-positive cells and single-positive FcεRI⁺ cells were counted and recorded for each area of epithelium, and the number of FcεRI⁺ DCs per mm² was quantified for each donor's biopsies. Significance was determined via unpaired, two-tailed Student's T-test. The operator performing the microscopy experiments was blind to clinical status of donor who had provided the tissue section.

Results

BDCA1⁺ DCs markedly increase in the lungs of patients with IPF or HP

To examine whether DCs infiltrate the lungs in association with human interstitial lung diseases, we isolated pulmonary mononuclear cells (PMCs) from lung parenchyma of healthy deceased donors and patients with IPF, HP, and COPD (Table 1) and identified DCs by flow cytometry. First, singlet, live cells were gated based on forward and side scatter and a lack of PI staining (Fig. 1A). A great majority of these cells, even in fibrotic lungs, were found to be of hematopoietic origin as they were CD45⁺ (Fig. 1B). Next, BDCA1⁺ DCs were identified by gating BDCA1⁺lymphocyte marker⁻ cells and further gating MHCII⁺ cells (Fig. 1C). In contrast to blood BDCA1⁺ DCs (Fig. 1D), we found that lung BDCA1⁺ DCs were mostly CD14⁺ for all donors tested (Fig. 1E). A quantitative analysis of DC frequencies revealed that BDCA1⁺ DCs represented around 0.1-0.9% of PMCs in healthy lungs (Fig. 1F) and that this frequency increased in both of IPF and HP patients by five to six fold (Fig. 1F). COPD patients also had a significant increase in BDCA1⁺ DCs but to a much lesser degree than patients with fibrotic diseases (Fig. 1F). Thus, IPF and HP are associated with a robust increase in BDCA1⁺ DCs while COPD is associated with relatively a modest increase.

BDCA1⁺ DCs express FcεRI in lung parenchyma and airways

To aid in identification of BDCA1⁺ DCs in microscopic studies using small lung biopsies, we searched for specific markers that could be used to better identify these cells. Previous studies have shown that the high affinity IgE receptor, FcεRI, is expressed not only in mast cells and basophils but also in BDCA1⁺ DCs of human tissues. Blood and tonsil BDCA1⁺ DCs and Langerhans cells, the skin epidermal DC subset, express FcεRI [22–24]. BDCA1⁺ DCs from arthritic synovial fluid and malignant tumor

ascites also express FcεRI [15]. Whether lung BDCA1⁺ DCs express FcεRI has not been examined, although CD1a⁺ DCs in the airways have been shown to express FcεRI by immunohistochemistry [25].

First, we examined FcεRI expression in human lung BDCA1⁺ DCs by flow cytometry. We found that lung BDCA1⁺ DCs bound an anti-FcεRI antibody significantly more than an isotype control antibody, indicating that these cells indeed express FcεRI (Fig. 2A). Next, we examined how stably FcεRI is expressed in BDCA1⁺ DCs using our cohort of healthy and diseased lungs. We found that FcεRI was expressed in BDCA1⁺ lung DCs throughout cohort to varying degrees (Fig. 2B), which is consistent with previous reports of varying FcεRI levels in BDCA1⁺ DCs in the blood [22,26,27]. Despite this variation, surface FcεRI was detectable for all donors examined (Fig. 2B), and the average expression levels did not significantly differ between health and disease (Fig. 2B). This finding indicates that FcεRI is stably expressed in BDCA1⁺ DCs in the lungs.

We also examined whether FcεRI was expressed in cell types other than BDCA1⁺ DCs in the lungs. First, macrophages were examined. These cells were gated by high autofluorescence and high side scatter (Fig. 2C). This gating strategy has been previously used by others [13], and further validated by us confirming the expression of human macrophage markers such as CD68 in gated cells (Fig. 2C). No FcεRI expression was detected in these cells (Fig. 2C, right panel). Secondly, B-cells were examined. They were identified as [CD3/19/56 antibody mixtures]⁺MHCII⁺ BDCA1⁺ (Fig. 2D). No FcεRI expression was detected in these cells, either (Fig. 2D, right panel). Lastly, to get a more comprehensive view of FcεRI-expressing cells present in the lungs, we gated all PMCs that were non-autofluorescent but labeled by FcεRI antibody (Fig. 2E), and determined which cells are included in this gating. Expression of CD203c, a specific marker of human mast cells and basophils, and BDCA1 were examined. We found that FcεRI⁺ PMCs were segregated into two distinct populations that were either CD203⁺ or BDCA1⁺ (Fig. 2E, right panel). This finding suggested to us that the FcεRI⁺ PMCs are almost entirely composed of basophils/mast cells and BDCA1⁺ DCs. Further examination of the BDCA1⁺ cells showed that they were MHCII⁺CD14⁺ (Fig. 2F), confirming they were indeed BDCA1⁺ DCs. Conversely, CD203c⁺ cells had very low levels of MHCII and CD14 (Fig. 2F). This finding indicates that mast cells/basophils and BDCA1⁺ DCs are the only significant cell types expressing FcεRI in human lungs.

To expand our examination of FcεRI expression in BDCA1⁺ DCs in lung parenchyma, we also examined BDCA1⁺ DCs in airways. Two airway bronchial biopsies were obtained from a patient with asthma and the whole biopsy digests, rather than PMCs, were analyzed by flow cytometry to maximize the recovery of cells. By looking only at CD45⁺ cells, we found a distinct population of cells that express BDCA1 but not lymphocyte markers (Fig. 2G). A majority of these cells were MHCII⁺ (Fig. 2G), confirming that they are BDCA1⁺DCs. Furthermore, we found that these DCs expressed FcεRI similar to what we found with parenchymal DCs (Fig. 2G, right panel). We also analyzed the composition of FcεRI⁺ cells in the airway by taking the same approach described above for parenchymal tissues. We found that like in the parenchyma, FcεRI⁺ cells in the airways were segregated into either BDCA1⁺ or CD203c⁺ cells (Fig. 2H), and that BDCA1⁺ cells but not CD203⁺ cells expressed MHCII and CD14 (Fig. 2I). Thus, mast cells/basophils and BDCA1⁺ DCs are the only cell types expressing FcεRI in the airways. These findings indicate that FcεRI can be used as a marker of BDCA1⁺ DCs in human lungs and airways when combined with either BDCA1, MHCII, or CD14.

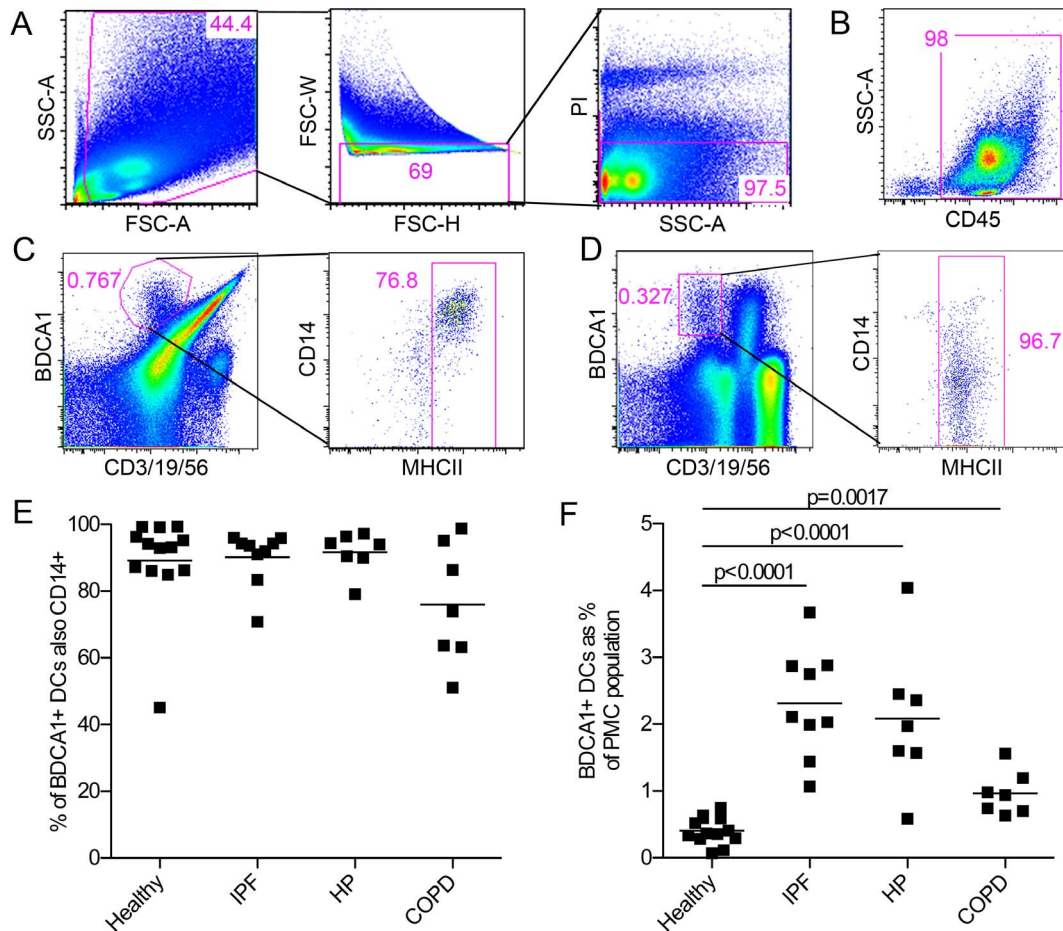


Figure 1. BDCA1⁺ DCs markedly increase in the lungs of IPF and HP. (A) Pulmonary mononuclear cells were isolated from surgically resected parenchymal lung tissue. Live singlet cells were identified based on forward and side scatter and a lack of PI-staining. Data from one representative donor of over 20 are shown. Numbers in pink represent the gate population as a % of parent. (B) Live, singlet cells were stained with an anti-CD45 antibody to determine the prevalence of hematopoietic cells. Data from one representative donor of 3 healthy and 6 ILD patients are shown. (C) BDCA1⁺ DCs were identified in PMC isolates by their expression of BDCA1, MHCII, and their lack of expression of the lymphocyte markers CD3, CD19, and CD56. Data from one representative donor of over 20 are shown. (D) DCs were identified from peripheral blood mononuclear cells in a similar fashion based on their expression of BDCA1, and their lack of expression of the lymphocyte markers CD3, CD19, and CD56. They were further examined for their expression of MHCII. Data from one representative donor of over 20 are shown. (E) Percentage of BDCA1⁺ lung DCs that are also CD14⁺ from a cohort of donors described in Table 1. Each dot represents a unique donor and bar represents mean. There are no significant differences between subject groups as measured by unpaired, two-tailed Student's t-test. (F) BDCA1⁺ DCs were determined as a percentage of total PMCs from the same cohort of donors. Each dot represents a unique donor and bar represents mean. Statistical significance was determined by unpaired, two-tailed Student's t-tests. doi:10.1371/journal.pone.0099084.g001

BDCA1⁺ DCs increase in the epithelium of Th2-high but not Th2-low asthmatic airways

Having found that BDCA1⁺ DCs in human airways can be identified by their co-expression of FcεRI and MHCII, we examined the prevalence of BDCA1⁺ DCs in asthma by employing immunofluorescence microscopy of bronchial biopsies using FcεRI and MHCII antibodies. Recent studies have illustrated that human asthma is heterogeneous and can be segregated into two distinct subsets based on differential expression of Th2-responsive genes in the airway epithelium [21]. “Th2-high” asthma is characterized by high levels of Th2-responsive gene expression and it is associated with mast cell infiltration, sub-epithelial fibrosis, and eosinophilia [21]. In comparison, “Th2-low” asthma is characterized by the usual airflow dysfunction but relative absence of mast cell infiltration, sub-epithelial fibrosis, and eosinophilia [21].

We examined bronchial biopsies of eight Th2-low asthmatics and eight Th2-high asthmatics compared to seven healthy controls (Table 2). 3 μm-thick biopsy sections were stained with FcεRI and MHCII antibodies and subsequently with fluorophore-conjugated secondary antibodies. Images of each section were taken by confocal microscopy at 20x magnification and the area of epithelium was manually marked with Fiji software (Fig. 3A, left panel), which was then quantified as μm²/biopsy. The same section was then imaged at 60x and the number of FcεRI⁺MHCII⁺ cells in the epithelium was counted. (Fig. 3A, right panel). The reason that we analyzed DCs only within the epithelium is that Th2-low and -high asthma had been characterized based on gene expression profiles of the airway epithelium [28]. In addition, recent mouse studies suggest a significant contribution of epithelial cell-to-DC crosstalk to asthma pathology [29], implicating the important role of epithelial DCs in this disease. We found that the number of FcεRI⁺MHCII⁺ cells was significantly increased in the

Table 1. Subject data for ILD cohort.

	IPF	HP	COPD/Emphysema
Number	9	7	7
Age \pm SD	60 \pm 7	52 \pm 14	62 \pm 7
Gender M:F (% F)	5:4 (44%)	3:4 (57%)	4:3 (43%)
Ethnicity			
White	7	5	5
African American	0	0	2
Asian	0	0	0
Pacific Islander	0	0	0
Hispanic	2	2	0
FEV % predicted \pm SD	59 \pm 17	40 \pm 10	18 \pm 6

Healthy discarded donor lungs or diseased lungs from transplantation were examined for DC content of pulmonary mononuclear cells (PMCs). All ILD diagnoses were made using accepted standard diagnostic criteria. Lungs were lavaged and stored at 4 degrees in media until use (<72 hours from harvest). Age and FEV % predicted are shown as mean \pm SD.

doi:10.1371/journal.pone.0099084.t001

epithelium of Th2-high asthmatics compared to Th2-low asthmatics and healthy controls (Fig. 3B). Thus, BDCA1⁺ DCs accumulate in the airway epithelium of Th2-high asthma but not Th2-low. We also counted the number of epithelial Fc ϵ RI⁺MHCII⁺ cells - presumably mast cells or basophils - and found that these cells also significantly increased in Th2-high asthmatics but not in Th2-low asthmatics (Fig. 3C), consistent with previous findings [30].

Discussion

Our study demonstrates that IPF is associated with a robust (5–6 fold) increase in BDCA1⁺ DCs in the parenchyma. By quantifying DCs as a percentage of PMCs, we show a specific increase in DCs as opposed to overall increase in hematopoietic cells. Others have shown a significant increase in DCs in bronchoalveolar lavage from IPF patients [31], consistent with our finding. We also found that HP is associated with a dramatic increase in BDCA1⁺ DCs in lung parenchyma. To our knowledge, this is the first study that examined DC frequency in HP in a quantitative manner. We also found a significant increase in the frequency of DCs in the lungs of COPD, but to a much lesser degree (~2 fold) than IPF or HP. Others have examined the frequency of the same interstitial lung DC subsets in COPD and found a slight increase (up to ~2 fold) in the median DC frequency compared to healthy controls [32], although it did not reach significance in their statistical analysis. Notably, this study had significant patient variation and used a different method of statistical analysis, which may have lowered their threshold for statistical significance.

Our finding that DCs dramatically increased in IPF and HP implicates a potential contribution of DCs to these two diseases. As DCs are potent activators of T cells, they may contribute to lymphocyte-mediated inflammation in these diseases. Consistent with this hypothesis, chemokines that favor recruitment and accumulation of DCs and lymphocytes have been shown to significantly increase in the bronchoalveolar lavage fluid and lungs of IPF or HP patients [7,33,34]. While there are notable infiltrates of mixed lymphocytic populations in IPF lungs [35], the major pathology associated with IPF is progressive, extensive fibrosis of the lungs [36], and the ineffectiveness of immunosuppressant treatment such as corticosteroids [37] has led to the belief that immune cells are not likely involved in the disease process. Like IPF, late stage, chronic HP is also associated with severe fibrosis in the lungs [38], though there is also a significant contribution of

lymphocytic inflammation especially at early stages of the disease [39]. Alternatively, or in addition to their role in activating inflammatory T cells, DCs may significantly contribute to fibrosis in these diseases. In a mouse model of bleomycin-induced lung fibrosis, pharmacological inactivation of DCs resulted in a marked reduction in fibrosis [40]. Furthermore, DCs in IPF accumulate in fibrotic foci [7] and recent evidence indicates that they can regulate the vasculature and function of fibroblast-type cells [41]. Indeed, DCs can express TGF- β 1, which could potentially act directly on mesenchymal cells to modulate their behavior to be more profibrotic [42,43].

Our studies indicate that Fc ϵ RI can serve as a useful marker of BDCA1⁺ lung DCs. Fc ϵ RI expression by antigen presenting cells in human lungs has been previously examined by immunohistochemistry, which showed that some CD1a⁺ cells were Fc ϵ RI⁺ [25]. However, the extent to which Fc ϵ RI is expressed in a more comprehensive lung DC subset has not been examined. Our study indicates that Fc ϵ RI is constitutively expressed in BDCA1⁺ lung DCs, similarly to what had been found in blood, tonsil [22], and intestine [44]. Furthermore, a recent study revealed that Fc ϵ RI is expressed in BDCA1⁺ DCs in human arthritic synovial fluid and malignant tumor ascites [15], and additionally demonstrated that Fc ϵ RI is a useful marker that distinguishes DCs from macrophages, which do not express Fc ϵ RI but do express mannose receptors and DC-SIGN [15]. Collectively, these and our findings suggest that Fc ϵ RI can serve as a useful marker for BDCA1⁺ DCs in the lungs and possibly many other human tissues.

We found that the majority of BDCA1⁺ DCs in the lungs express CD14 while those in the blood do not. A previous study has shown that BDCA1⁺ DCs in tissues of inflammatory conditions express CD14 and suggested that CD14 expression is a specific feature of inflammatory DCs [15]. However, this study did not analyze DCs from any non-inflammatory tissue environment. Therefore, it was unclear whether CD14 expression is linked to the inflammatory environment or due to the distinct property of tissue DCs versus blood DCs. When we examined BDCA1⁺ DCs in healthy lungs, we found that most express CD14. Thus, we suggest that CD14 expression is not a marker of inflammatory DCs, but a marker of tissue DCs as opposed to circulating blood DCs. Interestingly, a minor fraction of BDCA1⁺ DCs in the blood also express CD14 along with Fc ϵ RI; these cells may represent DCs that are initiating or are in the process of migrating into peripheral tissue sites.

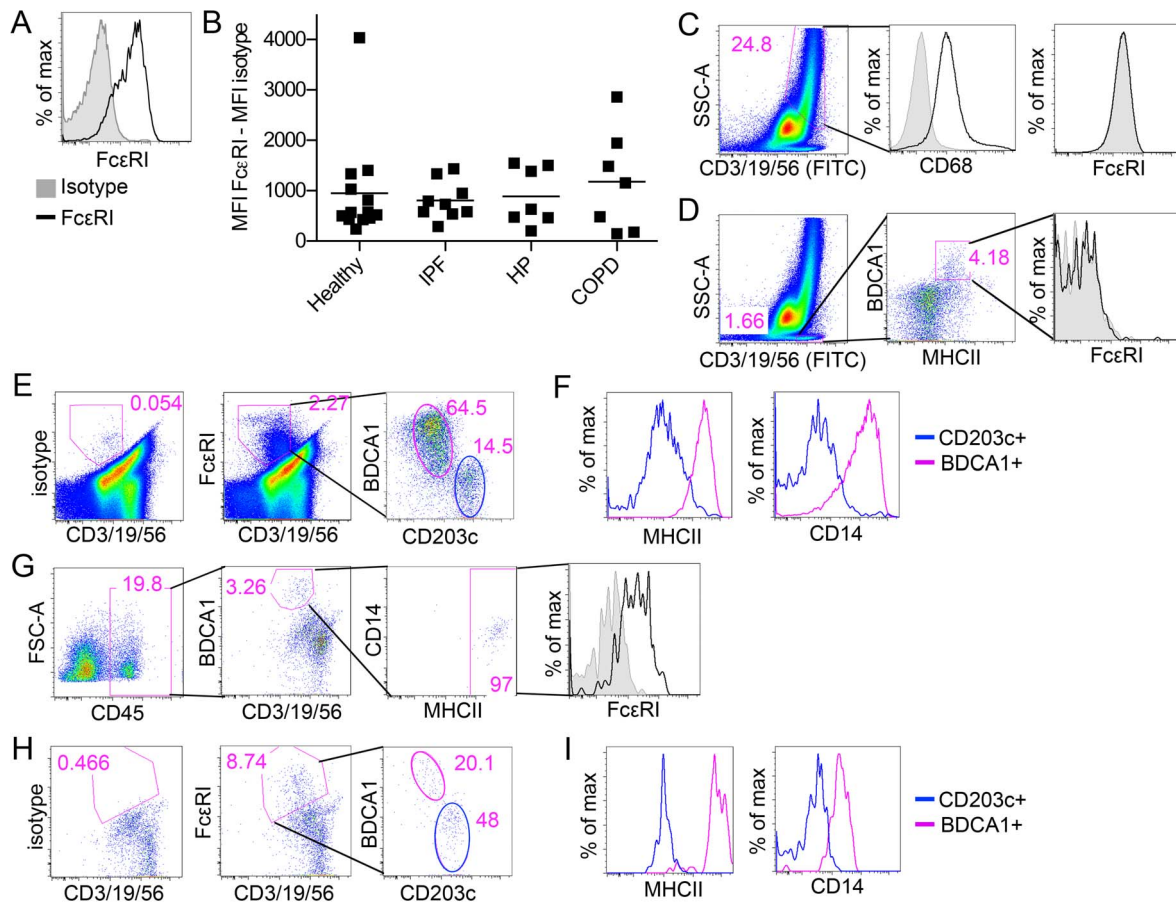


Figure 2. Lung BDCA1⁺ DCs express FcεRI. (A) Lung BDCA1⁺ DCs from one representative donor were gated using the strategy as described in Figure 1 and examined for expression of FcεRI. Isotype control is shown in grey and anti-FcεRI antibody is in black. (B) Mean fluorescence intensity of FcεRI signal minus isotype control intensity in lung BDCA1⁺ DCs was plotted for each donor tested in Figure 1. Bar represents mean. There are no significant differences between subject groups as measured by unpaired, two-tailed Student's t-test. (C) Macrophages were gated based on high autofluorescence reflected to the FITC channel and high side scatter and tested for their expression of CD68 and FcεRI. Isotype control is shown in grey and anti-CD68 antibody or FcεRI antibody is in black. (D) B-cells were gated based on lymphocyte marker (CD3/19/56)⁺SSC^{lo}MHCII⁺BDCA1⁺ cells and tested for their expression of FcεRI. Isotype control is shown in grey and anti-FcεRI antibody is in black. (E) FcεRI⁺ cells from lung parenchyma were identified by comparing isotype control antibody-stained PMCs (left panel) to FcεRI antibody-stained PMCs (middle panel). FcεRI⁺ cells from the middle panel were examined for the expression of the DC marker BDCA1 and the mast cell/basophil marker CD203c (right panel). (F) Cell populations gated in Fig. 2E (right panel) were compared for expression of MHCII and CD14; only BDCA1⁺ cells (pink line) are MHCII⁺CD14⁺. (G) BDCA1⁺ DCs were identified from airway biopsies and were examined for FcεRI expression. Among CD45⁺ cells, BDCA1⁺ DCs were gated as described in Fig. 1C and examined for the expression of FcεRI. Isotype control is shown in grey and anti-FcεRI antibody is in black. (H) FcεRI⁺ cells from airway biopsies were identified and analyzed for the expression of BDCA1 and CD203c as described in Fig. 2E. (I) Cell populations gated in Fig. 2H (right panel) were compared for expression of MHCII and CD14; only BDCA1⁺ cells (pink line) are MHCII⁺CD14⁺. doi:10.1371/journal.pone.0099084.g002

By employing dual-antibody immunofluorescence microscopy using FcεRI and MHCII antibodies, we found that BDCA1⁺ DCs are enriched specifically in Th2-high asthmatic airway epithelium. One might suspect that DCs of healthy and Th2-low asthmatics were undercounted in association with their FcεRI expression levels compared to Th2-high asthmatics, as Th2-associated conditions such as high serum IgE tend to correlate with surface FcεRI expression [27]. However, we consider this unlikely because we were able to readily localize rare FcεRI^{low} cells by using a high laser power and a high magnification optic (60X), and thus were able to clearly distinguish them from FcεRI⁺ cells. One might also argue that basophils or mast cells contaminated our DC identification strategy because of potential MHCII expression in these cells. Besides remaining controversy surrounding MHCII expression levels in lung mast cells or basophils [45,46], we found their MHCII expression levels to be 10-100-fold lower than DCs

(Fig. 2F), even in Th2-high asthmatic airways (Fig. 2I). This large difference was readily distinguishable with fluorescence microscopy by keeping the laser power within a non-saturating range of MHCII levels. Thus, it is unlikely that mast cells or basophils were included in our MHCII⁺FcεRI⁺ cell counting.

Our finding of BDCA1⁺ DC accumulation in Th2-high asthma is consistent with data in mouse models of asthma, and the functional role of BDCA1⁺ DCs in asthma can be predicted from these studies. Depletion of mouse lung DCs or inhibition of their function has been shown to abrogate asthma-like pathology in mouse models [5,47]. DCs also have been found to play a critical role in inducing and maintaining Th2 immunity in mouse lungs [47,48]. Similar to DCs in mice, BDCA1⁺ DCs in humans may play a crucial role in generating and maintaining Th2 immunity in asthma. Notably, Th2-high asthma typically responds well to steroid therapy [21], and steroid treatment has been shown to

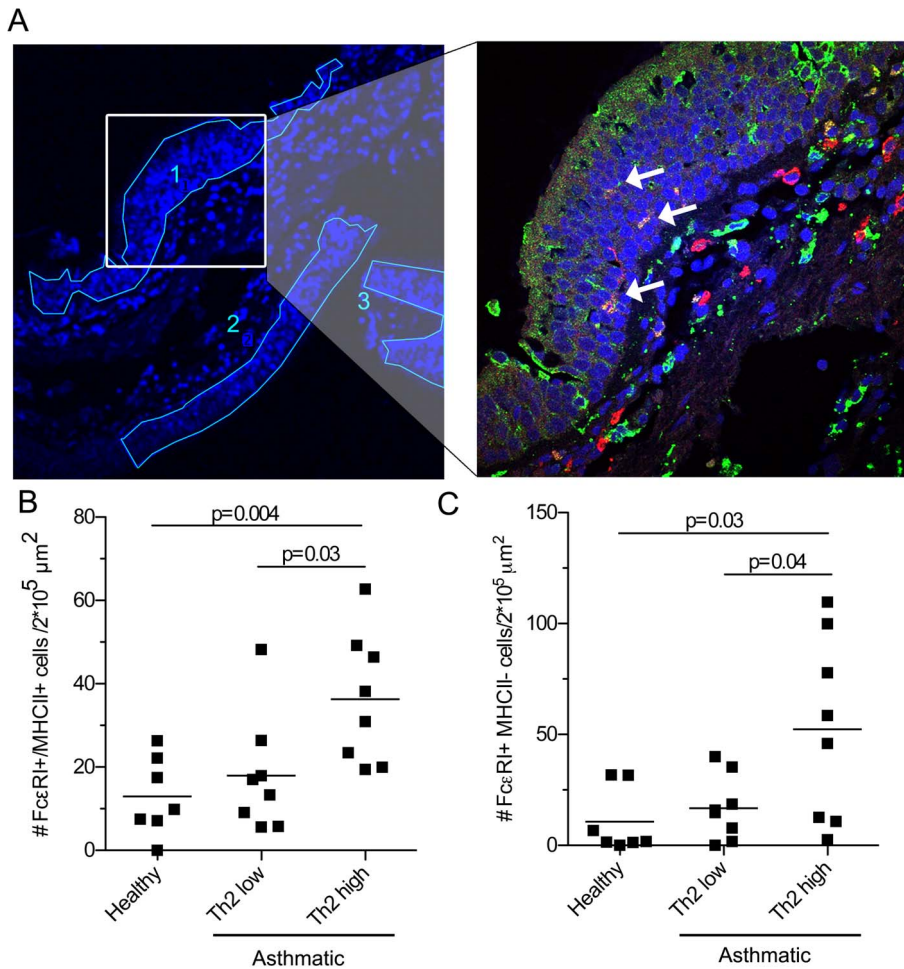


Figure 3. BDCA1⁺ DCs increase in the epithelium of Th2-high but not Th2-low asthmatic airways. (A) Left panel, representative image of bronchial airway biopsy showing DAPI staining in blue (other channels are omitted for clarity). Lumen is located at the image peripheries and sub-epithelial tissues are centrally located. Images were obtained by a Nikon C1si microscope at 20x magnification. Areas of airway epithelium (numbered) were manually outlined using FIJI software and area was calculated for each individual biopsy. Region highlighted in left was imaged at 60x as shown in right panel (lumen is located to the top left); DCs were identified based on expression of MHCII (green) and FcεRI (red) and presence of significant cell body. Double-positive DCs in epithelium are indicated with arrows. (B–C) FcεRI⁺ MHCII⁺ double positive cells (B) and FcεRI⁺ single positive cells (C) in the epithelium were counted for each biopsy. Number of cells per $2 \times 10^5 \mu\text{m}^2$ epithelium was calculated. Bar represents mean. Statistical significance (p values) was determined via two-tailed, unpaired Student's t-test. doi:10.1371/journal.pone.0099084.g003

Table 2. Subject data for asthmatic cohort.

	Healthy	Asthmatic	
		Th2-low	Th2-high
Number	7	8	8
Age ± SD	36±12	30±12	41±8
Gender M:F (% F)	5:2 (29%)	6:2 (25%)	5:3 (38%)
Ethnicity			
White	5	5	6
African American	0	1	1
Asian	1	1	1
Pacific Islander	0	0	0
Hispanic	1	1	0
FEV1 % predicted ± SD	92%±7	91%±10	79%±10

Healthy or asthmatic subjects were enrolled and tested for airway hyper-responsiveness as measured by airway hyper-responsiveness upon methacholine challenge and allergies as measured by serum IgE. Th2 skew was categorized by methods from Woodruff et al. [21]. Age and FEV1 % predicted are shown as mean ± SD. doi:10.1371/journal.pone.0099084.t002

lower the number of DCs in airways [49]. DC accumulation may be tightly connected to disease exacerbation; however, the specific mechanism by which airway epithelial DCs accumulate remains to be determined. Epithelial cells in Th2-high asthma express a number of cytokines and chemokines [28] which may recruit DCs to the epithelium. Alternatively, DCs may proliferate in the epithelium of Th2-high asthmatics; interestingly, a recent study has shown that airway epithelial DCs but not interstitial DCs proliferate in a Th2 mouse asthma model [50]. Given the central role of DCs in inducing and perpetuating Th2 inflammation in mouse and possibly human asthma, understanding the mechanism by which DCs increase in the airway epithelium may provide a novel therapeutic approach to control this disease.

In conclusion, by using flow cytometry and dual-color immunofluorescence microscopy we found that IPF, HP, COPD, and Th2-high asthma are associated with the accumulation of BDCA1⁺ DCs at the sites of disease pathology. Further

biochemical and functional analyses of this DC subset are expected to improve our understanding of the pathogenesis of these diseases.

Acknowledgments

We thank Stacy Shen for the preparation of lung specimens, the BIDC microscopy core for the support of confocal microscopes, Laura Simpson for the use of a CD45 antibody, and Amy Putnam for blood collection.

Author Contributions

Conceived and designed the experiments: AMG CPN PGW JS. Performed the experiments: AMG. Analyzed the data: AMG JS PGW PJW. Contributed reagents/materials/analysis tools: AMG MAM JK NRB CPN PJW PGW JVF JS. Wrote the paper: AMG MAM NRB CPN PJW PGW JVF JS.

References

- Jahnsen FL, Strickland DH, Thomas JA, Tobagus IT, Napoli S, et al. (2006) Accelerated antigen sampling and transport by airway mucosal dendritic cells following inhalation of a bacterial stimulus. *J Immunol* 177: 5861–5867.
- Thornton EE, Looney MR, Bose O, Sen D, Sheppard D, et al. (2012) Spatiotemporally separated antigen uptake by alveolar dendritic cells and airway presentation to T cells in the lung. *J Exp Med* 209: 1183–1199. doi:10.1084/jem.20112667
- McGill J, Van Rooijen N, Legge KL (2008) Protective influenza-specific CD8 T cell responses require interactions with dendritic cells in the lungs. *J Exp Med* 205: 1635–1646. doi:10.1084/jem.20080314
- Grayson MH, Cheung D, Rohlfing MM, Kitchens R, Spiegel DE, et al. (2007) Induction of high-affinity IgE receptor on lung dendritic cells during viral infection leads to mucous cell metaplasia. *J Exp Med* 204: 2759–2769. doi:10.1084/jem.20070360
- van Rijt LS, Jung S, Kleinjan A, Vos N, Willart M, et al. (2005) In vivo depletion of lung CD11c⁺ dendritic cells during allergen challenge abrogates the characteristic features of asthma. *J Exp Med* 201: 981–991. doi:10.1084/jem.20042311
- GeurtsvanKessel CH, Willart MAM, Bergen IM, van Rijt LS, Muskens F, et al. (2009) Dendritic cells are crucial for maintenance of tertiary lymphoid structures in the lung of influenza virus-infected mice. *J Exp Med* 206: 2339–2349. doi:10.1084/jem.20090410
- Marchal-Somme J, Uzunhan Y, Marchand-Adam S, Kambouchner M, Valeyre D, et al. (2007) Dendritic cells accumulate in human fibrotic interstitial lung disease. *Am J Respir Crit Care Med* 176: 1007–1014. doi:10.1164/rccm.200609-1347OC
- Möller GM, Overbeck SE, Van Helden-Meeuwse CG, van Haarst JM, Prens EP, et al. (1996) Increased numbers of dendritic cells in the bronchial mucosa of atopic asthmatic patients: downregulation by inhaled corticosteroids. *Clin Exp Allergy* 26: 517–524.
- Jahnsen FL, Moloney ED, Hogan T, Upham JW, Burke CM, et al. (2001) Rapid dendritic cell recruitment to the bronchial mucosa of patients with atopic asthma in response to local allergen challenge. *Thorax* 56: 823–826.
- Van Pottelberge GR, Bracke KR, Demedts IK, De Rijck K, Reinartz SM, et al. (2010) Selective accumulation of langerhans-type dendritic cells in small airways of patients with COPD. *Respir Res* 11: 35. doi:10.1186/1465-9921-11-35
- Masten BJ, Olson GK, Tarleton CA, Rund C, Schuyler M, et al. (2006) Characterization of myeloid and plasmacytoid dendritic cells in human lung. *J Immunol* 177: 7784–7793.
- Cheong C, Matos I, Choi J-H, Dandamudi DB, Shrestha E, et al. (2010) Microbial stimulation fully differentiates monocytes to DC-SIGN/CD209(+) dendritic cells for immune T cell areas. *Cell* 143: 416–429. doi:10.1016/j.cell.2010.09.039
- Demedts IK, Brusselle GG, Vermaelen KY, Pauwels RA (2005) Identification and characterization of human pulmonary dendritic cells. *Am J Respir Cell Mol Biol* 32: 177–184. doi:10.1165/rcmb.2004-0279OC
- Dzionic A, Fuchs A, Schmidt P, Cremer S, Zysk M, et al. (2000) BDCA-2, BDCA-3, and BDCA-4: three markers for distinct subsets of dendritic cells in human peripheral blood. *J Immunol* 165: 6037–6046.
- Segura E, Touzot M, Bohineust A, Cappuccio A, Chiochia G, et al. (2013) Human Inflammatory Dendritic Cells Induce Th17 Cell Differentiation. *Immunity*. doi:10.1016/j.immuni.2012.10.018
- Tsoumakidou M, Demedts IK, Brusselle GG, Jeffery PK (2008) Dendritic cells in chronic obstructive pulmonary disease: new players in an old game. *Am J Respir Crit Care Med* 177: 1180–1186. doi:10.1164/rccm.200711-1727PP
- Segura E, Valladeau-Guilemond J, Donnadieu M-H, Sastre-Garau X, Soumelis V, et al. (2012) Characterization of resident and migratory dendritic cells in human lymph nodes. *J Exp Med* 209: 653–660. doi:10.1084/jem.20111457
- van Haarst JM, Verhoeven GT, de Wit HJ, Hoogsteden HC, Debets R, et al. (1996) CD1a⁺ and CD1a⁻ accessory cells from human bronchoalveolar lavage differ in allostimulatory potential and cytokine production. *Am J Respir Cell Mol Biol* 15: 752–759.
- van Haarst JM, Hoogsteden HC, de Wit HJ, Verhoeven GT, Havenith CE, et al. (1994) Dendritic cells and their precursors isolated from human bronchoalveolar lavage: immunocytologic and functional properties. *Am J Respir Cell Mol Biol* 11: 344–350.
- Orens JB, Estenne M, Arcasoy S, Conte JV, Corris P, et al. (2006) International guidelines for the selection of lung transplant candidates: 2006 update—a consensus report from the Pulmonary Scientific Council of the International Society for Heart and Lung Transplantation. *J Heart Lung Transplant* 25: 745–755. doi:10.1016/j.healun.2006.03.011
- Woodruff PG, Modrek B, Choy DF, Jia G, Abbas AR, et al. (2009) T-helper type 2-driven inflammation defines major subphenotypes of asthma. *Am J Respir Crit Care Med* 180: 388–395. doi:10.1164/rccm.200903-0392OC
- Foster B, Metcalfe DD, Prussin C (2003) Human dendritic cell 1 and dendritic cell 2 subsets express FcεpsilonRI: correlation with serum IgE and allergic asthma. *J Allergy Clin Immunol* 112: 1132–1138. doi:10.1016/j.jaci.2003.09.011
- Bieber T, la Salle de H, Wollenberg A, Hakimi J, Chizzonite R, et al. (1992) Human epidermal Langerhans cells express the high affinity receptor for immunoglobulin E (Fc epsilon RI). *J Exp Med* 175: 1285–1290.
- Wang B, Rieger A, Kilgus O, Ochiai K, Maurer D, et al. (1992) Epidermal Langerhans cells from normal human skin bind monomeric IgE via Fc epsilon RI. *J Exp Med* 175: 1353–1365.
- Tunon-De-Lara JM, Redington AE, Bradding P, Church MK, Hartley JA, et al. (1996) Dendritic cells in normal and asthmatic airways: expression of the alpha subunit of the high affinity immunoglobulin E receptor (Fc epsilon RI -alpha). *Clin Exp Allergy* 26: 648–655.
- Vasudev M, Cheung DS, Pincsak H, Li S-H, Yan K, et al. (2012) Expression of high-affinity IgE receptor on human peripheral blood dendritic cells in children. *PLoS ONE* 7: e32556. doi:10.1371/journal.pone.0032556
- Dehlink E, Baker AH, Yen E, Nurko S, Fiebiger E (2010) Relationships between levels of serum IgE, cell-bound IgE, and IgE-receptors on peripheral blood cells in a pediatric population. *PLoS ONE* 5: e12204. doi:10.1371/journal.pone.0012204
- Woodruff PG, Boushey HA, Dolganov GM, Barker CS, Yang YH, et al. (2007) Genome-wide profiling identifies epithelial cell genes associated with asthma and with treatment response to corticosteroids. *Proc Natl Acad Sci USA* 104: 15858–15863. doi:10.1073/pnas.0707413104
- Lambrech BN, Hammad H (2012) The airway epithelium in asthma. *Nat Med* 18: 684–692. doi:10.1038/nm.2737
- Dougherty RH, Sidhu SS, Raman K, Solon M, Solberg OD, et al. (2010) Accumulation of intraepithelial mast cells with a unique protease phenotype in T(H)2-high asthma. *J Allergy Clin Immunol* 125: 1046–1053. doi:10.1016/j.jaci.2010.03.003
- Tsoumakidou M, Karagiannis KP, Bouloukaki I, Zakyntinos S, Tzanakis N, et al. (2009) Increased Bronchoalveolar Lavage Fluid CD1c Expressing Dendritic Cells in Idiopathic Pulmonary Fibrosis. *Respiration* 78: 446–452. doi:10.1159/000226244
- Freeman CM, Martinez FJ, Han MK, Ames TM, Chensue SW, et al. (2009) Lung dendritic cell expression of maturation molecules increases with worsening chronic obstructive pulmonary disease. *Am J Respir Crit Care Med* 180: 1179–1188. doi:10.1164/rccm.200904-0552OC

33. Pisabarro MT, Leung B, Kwong M, Corpuz R, Frantz GD, et al. (2006) Cutting edge: novel human dendritic cell- and monocyte-attracting chemokine-like protein identified by fold recognition methods. *J Immunol* 176: 2069–2073.
34. Burkhardt AM, Tai KP, Flores-Guiterrez JP, Vilches-Cisneros N, Kamdar K, et al. (2012) CXCL17 is a mucosal chemokine elevated in idiopathic pulmonary fibrosis that exhibits broad antimicrobial activity. *J Immunol* 188: 6399–6406. doi:10.4049/jimmunol.1102903
35. Scadding JG, Hinson KF (1967) Diffuse fibrosing alveolitis (diffuse interstitial fibrosis of the lungs). Correlation of histology at biopsy with prognosis. *Thorax* 22: 291–304.
36. Noble PW, Barkauskas CE, Jiang D (2012) Pulmonary fibrosis: patterns and perpetrators. *J Clin Invest* 122: 2756–2762. doi:10.1172/JCI60323
37. Richeldi L, Davies HR, Ferrara G, Franco F (2003) Corticosteroids for idiopathic pulmonary fibrosis. *Cochrane Database Syst Rev*: CD002880. doi:10.1002/14651858.CD002880
38. Hanak V, Golbin JM, Ryu JH (2007) Causes and presenting features in 85 consecutive patients with hypersensitivity pneumonitis. *Mayo Clin Proc* 82: 812–816. doi:10.4065/82.7.812
39. Selman M, Pardo A, King TE (2012) Hypersensitivity pneumonitis: insights in diagnosis and pathobiology. *Am J Respir Crit Care Med* 186: 314–324. doi:10.1164/rccm.201203-0513CI
40. Bantsimba-Malanda C, Marchal-Sommé J, Goven D, Freynet O, Michel L, et al. (2010) A role for dendritic cells in bleomycin-induced pulmonary fibrosis in mice? *Am J Respir Crit Care Med* 182: 385–395. doi:10.1164/rccm.200907-1164OC
41. Chyou S, Benahmed F, Chen J, Kumar V, Tian S, et al. (2011) Coordinated regulation of lymph node vascular-stromal growth first by CD11c+ cells and then by T and B cells. *J Immunol* 187: 5558–5567. doi:10.4049/jimmunol.1101724
42. Zhou LJ, Tedder TF (1995) A distinct pattern of cytokine gene expression by human CD83+ blood dendritic cells. *Blood* 86: 3295–3301.
43. Gruschwitz MS, Hornstein OP (1992) Expression of transforming growth factor type beta on human epidermal dendritic cells. *J Invest Dermatol* 99: 114–116.
44. Bannert C, Bidmon-Fliegenschnee B, Stary G, Hotzy F, Stift J, et al. (2012) Fc-epsilon-RI, the high affinity IgE-receptor, is robustly expressed in the upper gastrointestinal tract and modulated by mucosal inflammation. *PLoS ONE* 7: e42066. doi:10.1371/journal.pone.0042066
45. Galli SJ, Nakae S, Tsai M (2005) Mast cells in the development of adaptive immune responses. *Nat Immunol* 6: 135–142. doi:10.1038/ni1158
46. Hammad H, Plantinga M, Deswarte K, Pouliot P, Willart MAM, et al. (2010) Inflammatory dendritic cells—not basophils—are necessary and sufficient for induction of Th2 immunity to inhaled house dust mite allergen. *J Exp Med* 207: 2097–2111. doi:10.1084/jem.20101563
47. Idzko M, Hammad H, van Nimwegen M, Kool M, Müller T, et al. (2006) Local application of FTY720 to the lung abrogates experimental asthma by altering dendritic cell function. *J Clin Invest* 116: 2935–2944. doi:10.1172/JCI28295
48. Sallmann E, Reininger B, Brandt S, Duschek N, Hoflehner E, et al. (2011) High-affinity IgE receptors on dendritic cells exacerbate Th2-dependent inflammation. *J Immunol* 187: 164–171. doi:10.4049/jimmunol.1003392
49. Nelson DJ, McWilliam AS, Haining S, Holt PG (1995) Modulation of airway intraepithelial dendritic cells following exposure to steroids. *Am J Respir Crit Care Med* 151: 475–481. doi:10.1164/ajrccm.151.2.7842209
50. Veres TZ, Voedisch S, Spies E, Valtonen J, Prenzler F, et al. (2013) Aeroallergen challenge promotes dendritic cell proliferation in the airways. *J Immunol* 190: 897–903. doi:10.4049/jimmunol.1200220