

UC San Diego

UC San Diego Previously Published Works

Title

Improved compressed sensing and super-resolution of cardiac diffusion MRI with structure-guided total variation.

Permalink

<https://escholarship.org/uc/item/1fq915w2>

Journal

Magnetic resonance in medicine, 84(4)

ISSN

0740-3194

Authors

Teh, Irvin

McClymont, Darryl

Carruth, Eric

et al.

Publication Date

2020-10-01

DOI

10.1002/mrm.28245

Copyright Information

This work is made available under the terms of a Creative Commons Attribution License, available at <https://creativecommons.org/licenses/by/4.0/>

Peer reviewed

Improved compressed sensing and super-resolution of cardiac diffusion MRI with structure-guided total variation

Irvin Teh¹  | Darryl McClymont²  | Eric Carruth³  | Jeffrey Omens⁴  | Andrew McCulloch^{4,5}  | Jürgen E. Schneider¹ 

¹Leeds Institute of Cardiovascular & Metabolic Medicine, University of Leeds, Leeds, United Kingdom

²Perspectum Diagnostics Ltd, Oxford, United Kingdom

³Geisinger Health System, Danville, Pennsylvania

⁴Department of Medicine, University of California San Diego, La Jolla, California

⁵Department of Bioengineering, University of California San Diego, La Jolla, California

Correspondence

Irvin Teh, Leeds Institute of Cardiovascular & Metabolic Medicine, Worsley Building, Room 8.49j, Clarendon Way, University of Leeds, Leeds LS2 9NL, United Kingdom.
Email: i.teh@leeds.ac.uk

Funding information

This work was supported by the British Heart Foundation, United Kingdom (SI/14/1/30718, PG/13/33/30210, and FS/11/50/29038), the Engineering and Physical Sciences Research Council (EP/J013250/1), the Wellcome Trust (090532/Z/09/Z), and the Medical Research Council (MR/M008991/1).

Purpose: Structure-guided total variation is a recently introduced prior that allows reconstruction of images using knowledge of the location and orientation of edges in a reference image. In this work, we demonstrate the advantages of a variant of structure-guided total variation known as directional total variation (DTV), over traditional total variation (TV), in the context of compressed-sensing reconstruction and super-resolution.

Methods: We compared TV and DTV in retrospectively undersampled ex vivo diffusion tensor imaging and diffusion spectrum imaging data from healthy, sham, and hypertrophic rat hearts.

Results: In compressed sensing at an undersampling factor of 8, the RMS error of mean diffusivity and fractional anisotropy relative to the fully sampled ground truth were 44% and 20% lower in DTV compared with TV. In super-resolution, these values were 29% and 14%, respectively. Similarly, we observed improvements in helix angle, transverse angle, sheetlet elevation, and sheetlet azimuth. The RMS error of the diffusion kurtosis in the undersampled data relative to the ground truth was uniformly lower (22% on average) with DTV compared to TV.

Conclusion: Acquiring one fully sampled non-diffusion-weighted image and 10 diffusion-weighted images at 8× undersampling would result in an 80% net reduction in data needed. We demonstrate efficacy of the DTV algorithm over TV in reducing data sampling requirements, which can be translated into higher apparent resolution and potentially shorter scan times. This method would be equally applicable in diffusion MRI applications outside the heart.

KEYWORDS

cardiac MRI, compressed sensing, diffusion kurtosis, diffusion tensor imaging, directional total variation, super-resolution

This is an open access article under the terms of the Creative Commons Attribution License, which permits use, distribution and reproduction in any medium, provided the original work is properly cited.

© 2020 The Authors. *Magnetic Resonance in Medicine* published by Wiley Periodicals, Inc. on behalf of International Society for Magnetic Resonance in Medicine

1 | INTRODUCTION

Diffusion tensor imaging is a method for noninvasive assessment of tissue microstructure, and measures water diffusion that serves as a surrogate marker of features such as cell integrity and tissue anisotropy.¹ Diffusion tensor imaging is used in a wide range of applications and diseases, such as the assessment of neurodegenerative disorders,² chronic kidney disease,³ and prostate cancer.⁴ In the heart, for example, diffusion tensor imaging (DTI) has been used to identify changes in myocardial sheetlet dynamics in patients with hypertrophic cardiomyopathy and dilated cardiomyopathy,⁵⁻⁷ and to assess remodeling in the heart following infarction.⁸ However, DTI is inherently slow, due to the need to acquire at least seven images, including images that are diffusion-weighted (DW) in at least six unique directions, and one non-DW image. For example, for robust measurements, in the presence of noise, 20 or more unique diffusion directions are recommended, thereby extending scan times.^{9,10} In cardiac imaging,¹¹ scan times are further prolonged by the need to acquire multiple averages to compensate for motion and short T_2 .

To address this limitation, several methods have been proposed that can accelerate DTI and diffusion MRI in general, including parallel imaging,¹² simultaneous multislice imaging,¹³⁻¹⁵ and compressed sensing.¹⁶ The former two methods typically operate in image space or k -space, and rely on dedicated multichannel RF coils, and their performance depends on the spatially variant noise amplification characterized by the geometry or g -factor of the coil. Given that diffusion MRI requires multiple acquisitions with different diffusion-encoding directions and magnitudes of diffusion weighting in q -space, compressed-sensing approaches are well-placed to additionally exploit redundancies in q -space. Applications of compressed sensing include reconstruction of complex fiber architecture in the brain from single q -shell data,¹⁷ and recovery of fiber orientation information in the presence of 3-8 \times undersampling of data.^{18,19} Joint k - q -space acceleration has been proposed, including the use of ℓ_1 regularization and motion compensation,^{20,21} and phase-constrained low-rank models.²² These used spiral or pseudo-randomized undersampling in both k -space and q -space to achieve 4-fold time savings and/or reductions in image distortion. Furthermore, k - b principal component analysis has been proposed for the reconstruction of up to 6 \times undersampled intravoxel-incoherent motion imaging data in human brain.²³

Structural total variation is a recently introduced regularizer that allows the reconstruction of images using edge information from a reference image.²⁴ This approach, and in particular the variant of it known as directional total variation (DTV), in which both the location and orientation of edges is used, has been demonstrated to great effect in phantoms as well as T_1 -weighted and T_2 -weighted MRI in the brain. One

advantage of this algorithm, in particular over the method of Jiang and Hsu,²⁵ is that the contrast of the reference image has no effect on the image to be reconstructed. This makes it an ideal candidate for DWI reconstruction, in which images with similar image structure, but different diffusion contrast, are acquired. In particular, non-DW images are well-suited to being used as a reference image for DWI reconstruction, as the SNR is typically higher.

Although acceleration of image acquisition is one relevant aspect, undersampling of k -space or q -space is only relevant in acquisitions involving multiple shots or diffusion MRI data with multiple, and typically large, numbers of q -samples. Where images are acquired in a single shot, as is often the case in single-shot EPI diffusion MRI, data undersampling may be used in conjunction with super-resolution techniques to instead improve image resolution and minimize image distortions. Various algorithms have been proposed to improve the resolution of diffusion MRI. Peled and Yeshurun applied a method based on subvoxel shifts²⁶; however, the viability of this method for improving resolution has been questioned,²⁷ as a subvoxel shift is equivalent to a linear phase offset in k -space. Jiang and Hsu used reduced encoding imaging²⁸ to modify the edges of k -space from a high-resolution reference image.²⁵ Poot proposed a method that combines information from thick 2D slices acquired in a unique orientation for each DW image.²⁹ Alexander et al proposed a method based on image-quality transfer to perform super-resolution in diffusion MRI.³⁰ As with all methods based on machine learning, this approach relies on the training data being representative of any images that are being reconstructed.

In this paper, we demonstrate the suitability of the DTV regularizer for the reconstruction of diffusion-weighted images. This is demonstrated by retrospectively undersampling and reconstructing images using both a compressed-sensing framework with random undersampling of k -space, and in a super-resolution framework that reconstructs down-sampled images through k -space truncation. The source data consist of ex vivo rat hearts imaged at high resolution on a preclinical MR scanner, and the reconstructions are validated against fully sampled MR images. Although the algorithm is performed on ex vivo cardiac data, it is equally applicable to DW images of other organs, in which there is structural similarity between a reference image and DW images.

2 | THEORY

We consider the process of image formation to be formulated as an inverse problem. Let 3D volume \mathbf{Z} be sampled under the process \mathbf{A} to yield discrete data \mathbf{X} . Assuming additive Gaussian noise ϵ , this is modeled as $\mathbf{X} = \mathbf{AZ} + \epsilon$. The process \mathbf{A} can include a combination of spatial transforms, integral transforms (such as the Fourier transform in MRI, or the Radon transform

in CT), convolution with a point spread function, and data sampling. Assuming that the problem is well posed, the reconstructed image \mathbf{Y} may be obtained as follows:

$$\mathbf{Y}^* = \underset{\mathbf{Y}}{\operatorname{argmin}} (\mathbf{A}\mathbf{Y} - \mathbf{X})_2^2 \quad (1)$$

In many cases, such as in super-resolution or compressed sensing, this problem is badly conditioned or underdetermined. A common approach to addressing this is in the use of a regularizer, in the form of

$$\mathbf{Y}^* = \underset{\mathbf{Y}}{\operatorname{argmin}} (\mathbf{A}\mathbf{Y} - \mathbf{X})_2^2 + \lambda R(\mathbf{Y}). \quad (2)$$

The regularizer, R , introduces an assumption to the solution, such as controlling the smoothness of the image. Common choices for regularizers include TV³¹ or squared Laplacian.²⁹ We consider the DTV method of Ehrhardt et al.²⁴

2.1 | Directional total variation

The TV of a 3D image \mathbf{A} may be expressed as

$$\operatorname{TV}(\mathbf{A}) = \sum_{n=1}^3 |\nabla \mathbf{A}_n|. \quad (3)$$

The 3D DTV constraint J applied to image \mathbf{A} with reference image \mathbf{B} is defined as²⁴

$$J(\mathbf{A}, \mathbf{B}) = \sum_{n=1}^3 |D_n \nabla \mathbf{A}_n|, \quad (4)$$

where matrix field $D_n \in \mathbb{M}^3 = \mathbf{I} - \xi_n \xi_n^*$, \mathbf{I} is the identity matrix; and $\xi_n := \frac{\nabla \mathbf{B}_n}{|\nabla \mathbf{B}_n|_n}$. Tuning parameter η relates to the size of the edges in reference image \mathbf{B} .

Images are reconstructed by minimizing the 3D DTV while maintaining consistency with the acquired data, as follows:

$$\mathbf{Y}^* = \underset{\mathbf{Y}}{\operatorname{argmin}} \|\mathbf{F}\mathbf{Y} - \mathbf{X}\|_2^2 + \lambda J(\mathbf{Y}, \mathbf{I}_{\text{ref}}) \quad (5)$$

where \mathbf{Y} is the reconstructed image; \mathbf{X} is the sampled data; \mathbf{F} consists of the 3D Fourier transform and the sampling operator; and \mathbf{I}_{ref} is the reference image with the same size as \mathbf{Y} .

Two experiments were performed to demonstrate the algorithm. The first applies the DTV before the problem of reconstructing randomly undersampled data (ie, a compressed-sensing-style acquisition). The second applied the prior to the problem of super-resolution. In both experiments,

Equation 5 was solved using the algorithm and software described previously.²⁴ As the original software operated on magnitude-only 2D images, modifications were made to extend it to operate on complex 3D images. The modified software will be made available upon request.

3 | METHODS

3.1 | Data acquisition

Ex vivo rat heart data were acquired in a previous study.³² Briefly, hearts were excised from Sprague Dawley rats ($N = 5$). Isolated hearts were perfused in Langendorff constant pressure mode with modified Krebs-Henseleit solution, cardioplegically arrested with high potassium, and then perfused and stored in low-osmolality Karnovsky's fixative doped with 2 mM gadolinium solution (ProHance; Bracco, Minnesota). Before imaging, the fixed hearts were washed in phosphate-buffered saline + 2 mM gadolinium, and embedded in 1% agarose gel (Web Scientific, Crewe, United Kingdom). Nonselective 3D fast spin-echo DTI data were acquired on a 9.4T preclinical MRI scanner (Agilent, Santa Clara, CA) with transmit/receive birdcage coil (inner diameter = 20 mm; Rapid Biomedical, Rimpar, Germany). Acquisition parameters were as follows: TR = 250 ms, TE = 9.3 ms, echo spacing = 4.9 ms, echo train length = 8, FOV = $20 \times 16 \times 16$ mm, resolution = $100 \mu\text{m}^3$ isotropic, $b = 1000 \text{ s/mm}^2$, diffusion duration (δ) = 2 ms, diffusion time (Δ) = 5.5 ms, and number of DW directions = 10. Three-dimensional spoiled gradient-echo anatomical images were acquired with the same FOV, TR = 20 ms, TE = 4 ms, flip angle = 30° , and resolution = $33 \mu\text{m}^3$ isotropic. Noise data were acquired using an identical sequence without RF pulses and with TR minimized. The shims, receiver gain, and center frequency were unchanged during acquisition of the noise data. Experimental investigations conformed to the UK Home Office guidance on the Operations of Animals (Scientific Procedures) Act 1986 and were approved by the University of Oxford ethical review board.

To demonstrate application in cardiomyopathy, we examined data from a previous study³³ comparing male Sprague Dawley rats with sham surgery ($N = 4$) and transverse aortic constriction (TAC; $N = 4$). Use of these rats followed National Institutes of Health guidelines and were approved by the University of California San Diego Institutional Animal Care and Use Committee. Hearts were excised, arrested, fixed, and embedded for imaging in the same manner as described previously. Diffusion spectrum imaging data were acquired using a fast spin-echo sequence: TR = 250 ms, TE = 15 ms, echo spacing = 4 ms, echo train length = 8, FOV = $21.6 \times 14.4 \times 14.4$ mm, resolution = $180 \mu\text{m}^3$ isotropic, $b_{\text{max}} = 10\,000 \text{ s/mm}^2$, and number of DW directions = 514.

For further details on the generation of the TAC model and pulse sequence, please refer to McClymont et al.³³

3.2 | Experiment 1: Random undersampling in k-space

In experiment 1, the data were randomly retrospectively undersampled in k-space. A random sampling mask was applied based on a Gaussian distribution of samples in the two phase-encoding directions. The central region of k-space was fully sampled, using a circle with a radius of 10 samples. The readout dimension was fully sampled. The acceleration factor for the 10 DW images, A_{dw} , varied between 2 and 10. The non-DW image was fully sampled and used as the reference image. Therefore, the effective acceleration for the acquisition, A_{eff} , was

$$A_{eff} = \frac{11}{1 + \frac{10}{A_{dw}}}. \quad (6)$$

The undersampled data were reconstructed using both traditional TV (Equation 3) and DTV (Equation 4) as priors. The optimization settings for the DTV and TV reconstruction algorithms were identical. The algorithm was run with 200 iterations, and tuning parameter λ was set such that $\|\mathbf{FY} - \mathbf{X}\|_2^2 \approx \sigma^2$, where σ^2 is the measured variance of the noise. The noise level was computed based on the real

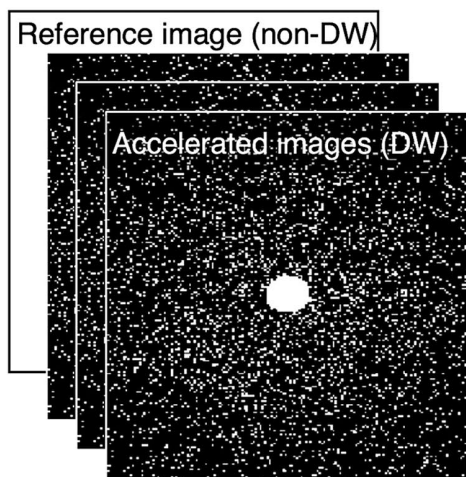
component of the noise data in k-space according to our previous work.¹⁶ In the DTV reconstruction, η was set to 0.05. The value of η was empirically determined as a reasonable compromise between allowing edge information to be reconstructed in the target image without introducing spurious edges.

3.3 | Experiment 2: Super-resolution using non-DW reference

In experiment 2, the central portion of k-space was selected to simulate a low-resolution acquisition, effectively down-sampling the image as shown in Figure 1. As in experiment 1, the non-DW image was used as a reference, and was not down-sampled. The DW images were down-sampled in each dimension by a factor of 2, 4, 6, 8, and 10, effectively reducing the isotropic resolution to 200 μm , 400 μm , 600 μm , 800 μm , and 1 mm, respectively. The retrospective undersampling masks for experiments 1 and 2 are shown (Figure 1).

In both experiments 1 and 2, the reconstructed images were validated using the original fully sampled data. The magnitude of the images was fit to a diffusion tensor model, and the mean diffusivity and fractional anisotropy were calculated. The helix angle, transverse angle, sheetlet elevation, and sheetlet azimuth were generated using the local coordinate system described.³² The RMS error (RMSE) in the myocardium of these six parameters was calculated, and the

Experiment 1: Under-sampling in k-space



Experiment 2: Down-sampling via k-space truncation



FIGURE 1 Masks for retrospective undersampling of k-space. In Experiment 1, masks in 2D were generated based on random sampling with a Gaussian distribution along the first and second phase-encoding directions (in-plane). The central region and the readout dimension (through-plane) were fully sampled. The number of remaining k-samples was equal to the total number of samples in 3D divided by the acceleration factor, A_{dw} . In Experiment 2, the masks retained only the central region of k-space, where the number of samples in each dimension were down-sampled by a factor of A_{dw}

mean and SD of the RMSE across the five hearts is reported. In addition, the DTV algorithm was applied using the high-resolution anatomical data as a reference.

In the sham and TAC groups, the DW data were down-sampled by a factor of 8 using both random undersampling and super-resolution approaches described in Experiments 1 and 2. We showed previously that the diffusion kurtosis was useful in discriminating the sham versus TAC groups where DTI was not. The beta distribution model was therefore fitted to the diffusion spectrum imaging data, and the diffusion kurtosis was obtained along the principal eigenvectors of the diffusion tensor.³³ The kurtosis and RMSE of the kurtosis relative to the fully sampled case were reported in the left ventricular myocardium in a single long-axis slice. We evaluated whether

there were significant differences in kurtosis between sham and TAC hearts, and in the RMSE of the kurtosis between TV and DTV reconstructions. Unpaired two-tailed t-tests were performed, and $P = .05$ significance level was used.

4 | RESULTS

Figure 2 presents sample parameter maps for the reconstruction algorithms. Heart 5, with the DW images down-sampled to $600\ \mu\text{m}$, was selected as representative of the algorithm performance. Zero-filled images show significant blurring and Gibbs ringing. In the super-resolution reconstructions, the traditional TV algorithm effectively removes Gibbs

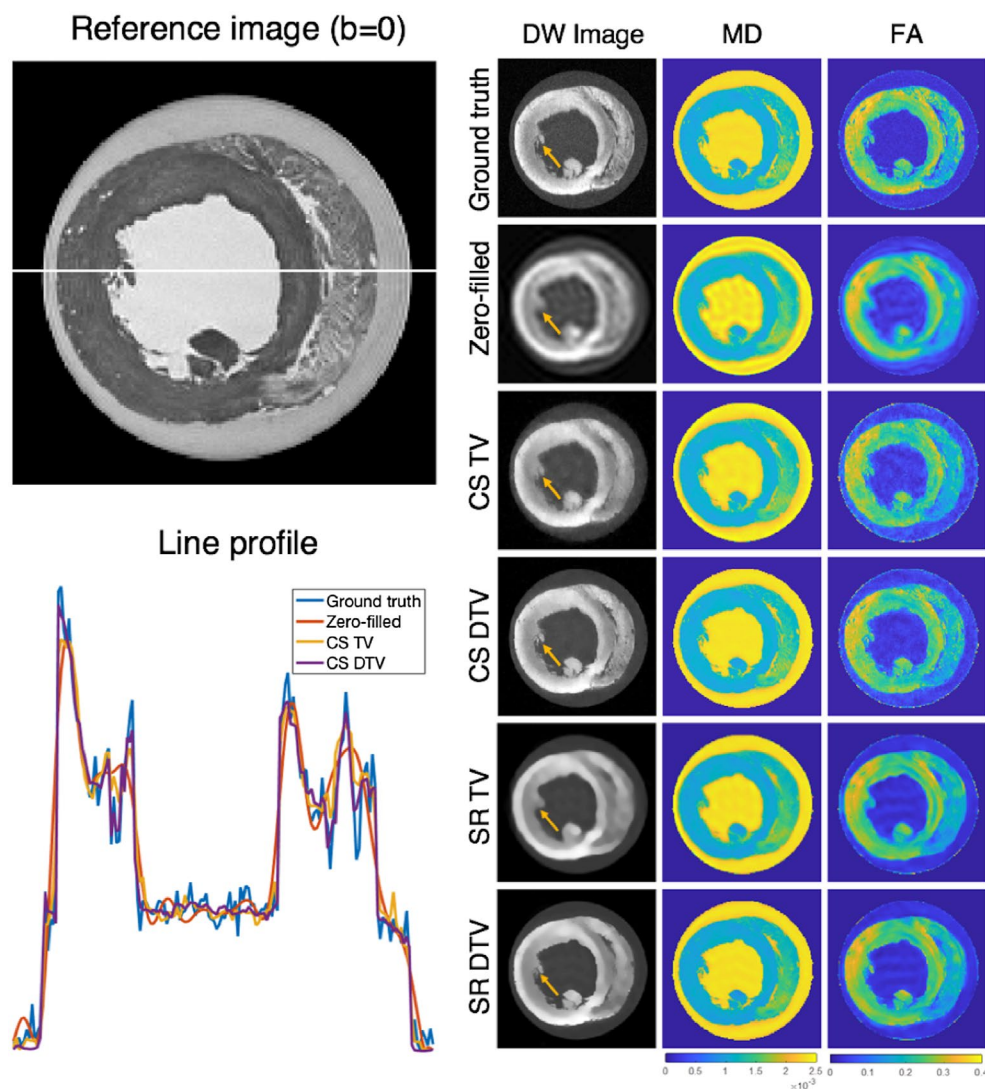


FIGURE 2 (Right) Representative diffusion-weighted (DW) images, mean diffusivity (MD; mm^2/s), and fractional anisotropy (FA) maps in a midventricular slice. (Top to bottom) Fully sampled ground truth, zero-filled, compressed-sensing (CS) total variation (TV) and directional total variation (DTV), and super-resolution (SR) TV and DTV data, where CS data were undersampled by $6\times$ and the zero-filled and SR data were undersampled by 6^3 . Ground-truth and zero-filled data are shown for comparison. Improvements in edge definition are shown in data reconstructed with DTV (arrows). (Top left) A reference non-DW image is shown, and (bottom left) corresponding line profiles through the lateral and septal walls in the DW images show better fidelity compared with the ground-truth data when using DTV. The SR line profiles are not shown for clarity

ringing, but does not sharpen edges. In comparison, the DTV algorithm removes Gibbs ringing and sharpens the image at the interfaces between tissue and gel/buffer. Edges that were not present in the low-resolution image (such as the observed fine structures within the right ventricle) were not introduced in the TV or DTV reconstructed image. In the case of compressed sensing, we present data undersampled by 6 \times . Here, the observed fine structures were better preserved compared with the super-resolution data, and edges were sharper using DTV compared with TV. Figure 3 shows that helix angle and transverse angle in all cases are close to the ground truth due

to their inherent smoothness. However, the blurring in the zero-filled and super-resolution data exceeds that of the data reconstructed with compressed sensing. This is reflected in larger angles between the reconstructed and ground-truth primary eigenvectors.

The results of experiment 1 representing the compressed-sensing approach are presented in Figure 4. The data show that the RMSE in the DTV reconstructions were uniformly lower than that of TV, as measured against the ground-truth data. At an undersampling factor of 8, for example, the RMSE of the TV/DTV reconstructions were mean diffusivity

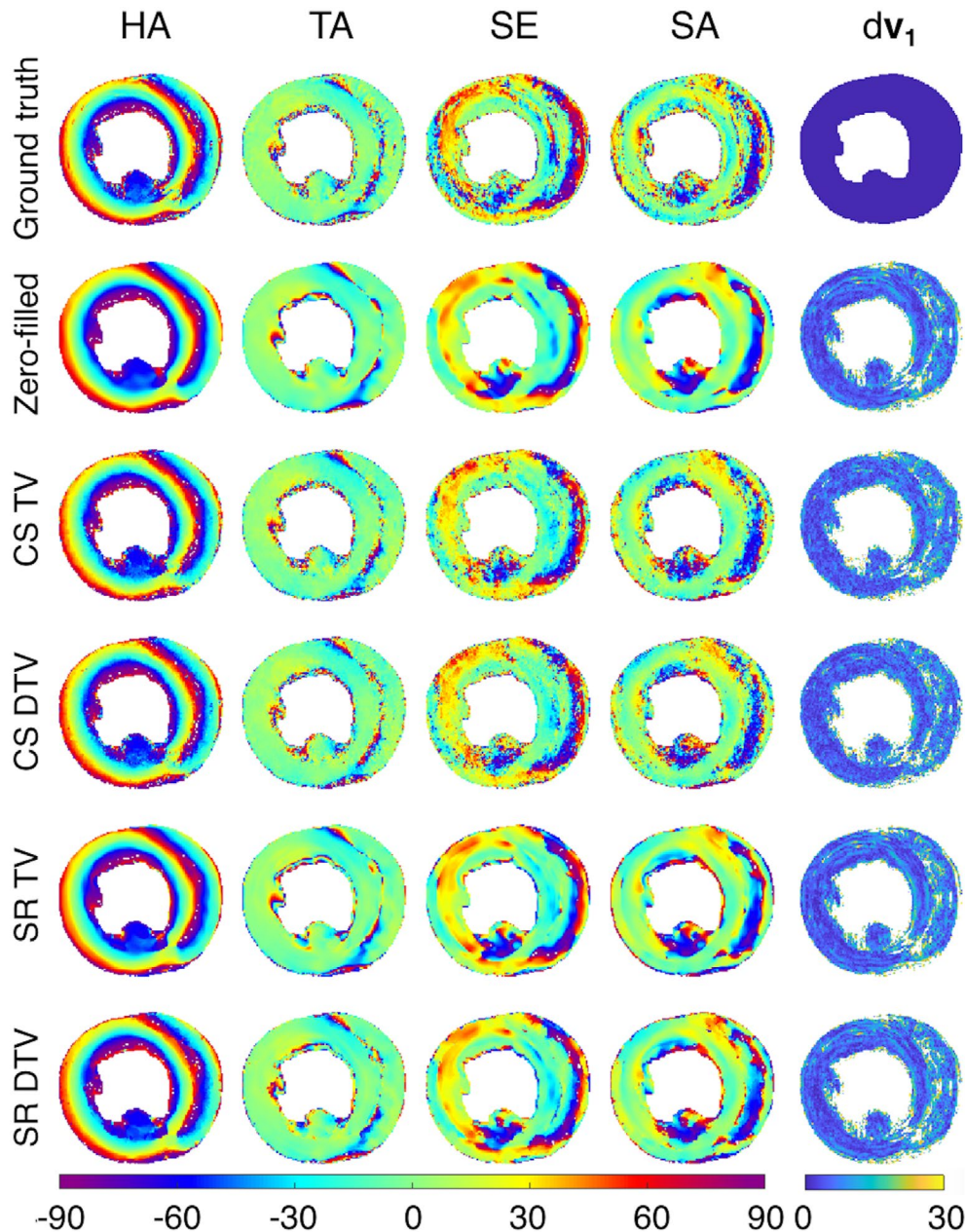


FIGURE 3 (Left to right) Representative helix angle (HA), transverse angle (TA), sheetlet elevation (SE), sheetlet azimuth (SA) maps, and the angle between reconstructed and ground-truth primary eigenvectors (dv_1) (in $^\circ$). (Top to bottom) Fully sampled ground truth, zero-filled, CS TV and CS DTV, and SR TV and SR DTV data, where CS data were undersampled by 6 \times and the zero-filled and SR data were undersampled by 6 3

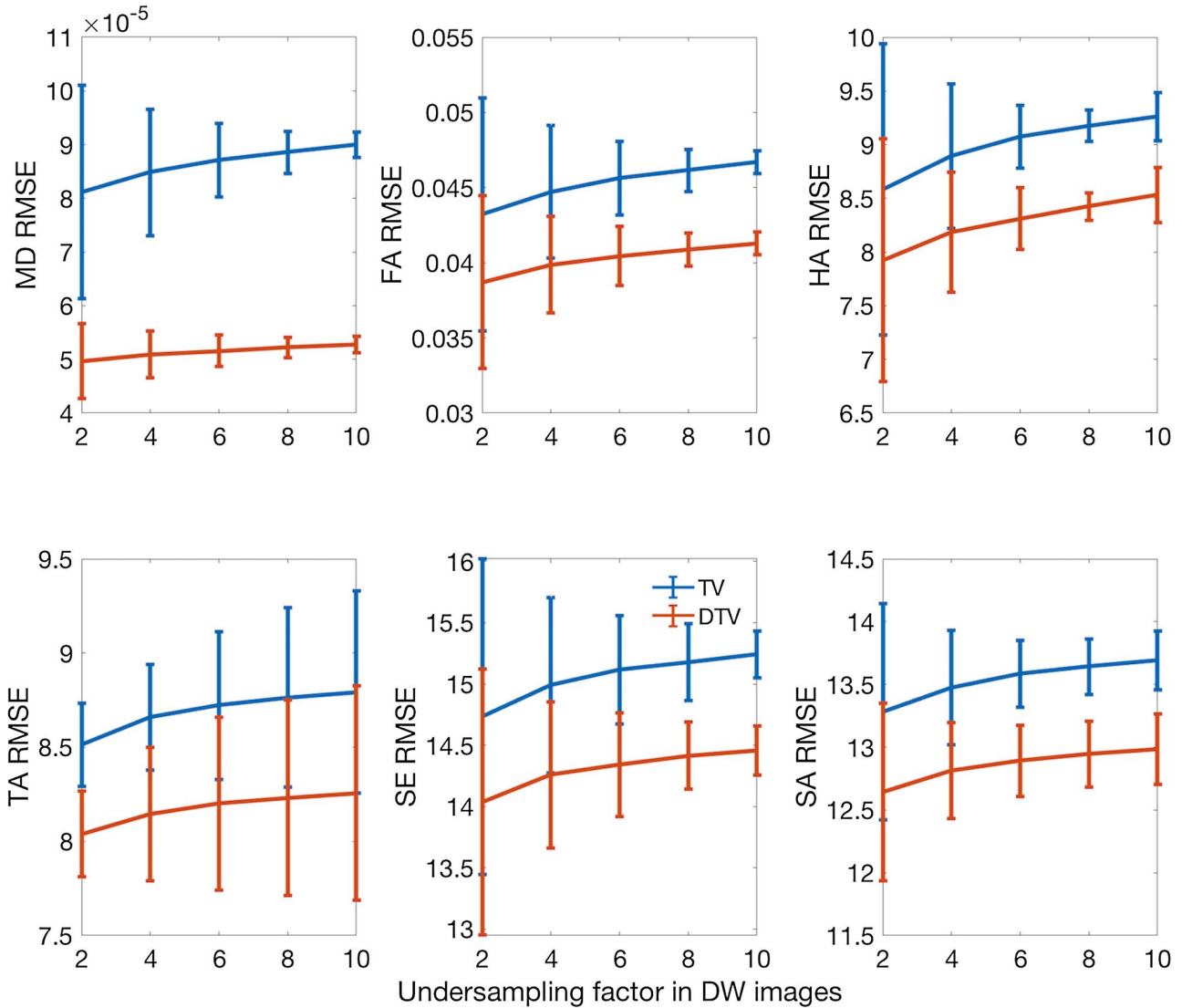


FIGURE 4 Root mean square error (RMSE) from experiment 1 with random undersampling of k-space shows greater agreement of DTV reconstructions with the fully sampled ground-truth data, compared with that of the TV reconstructions. Mean diffusivity (mm^2/s), FA, HA ($^\circ$), TA ($^\circ$), SE ($^\circ$), and SA ($^\circ$) are reported (mean \pm SD across hearts)

($[8.86 \pm 0.39] \times 10^{-5}/[5.22 \pm 0.19] \times 10^{-5} \text{ mm}^2/\text{s}$), fractional anisotropy ($0.0461 \pm 0.0014/0.0409 \pm 0.0011$), helix angle ($9.18^\circ \pm 0.15^\circ/8.42^\circ \pm 0.13^\circ$), transverse angle ($8.76^\circ \pm 0.48^\circ/8.23^\circ \pm 0.52^\circ$), sheetlet elevation ($15.18^\circ \pm 0.31^\circ/14.42^\circ \pm 0.27^\circ$), and sheetlet azimuth ($13.64^\circ \pm 0.22^\circ/12.94^\circ \pm 0.26^\circ$), respectively.

The results of experiment 2 indicate that the DTV algorithm consistently yields lower RMSE than the TV algorithm (Figure 5). At an undersampling factor of 8, corresponding to an effective isotropic resolution of $800 \mu\text{m}$, the RMSE of the TV/DTV reconstructions were MD ($1.40 \pm 0.14 \times 10^{-4}/[1.00 \pm 0.09] \times 10^{-4} \text{ mm}^2/\text{s}$), fractional anisotropy ($0.0711 \pm 0.0058/0.0637 \pm 0.0055$), helix angle ($13.17^\circ \pm 1.02^\circ/12.73^\circ \pm 0.73^\circ$), transverse angle ($9.45^\circ \pm 0.41^\circ/9.20^\circ \pm 0.45^\circ$), sheetlet elevation ($16.95^\circ \pm 0.56^\circ/16.16^\circ \pm 0.49^\circ$), and sheetlet azimuth ($15.12^\circ \pm 0.32^\circ/14.21^\circ \pm 0.35^\circ$), respectively.

The DW images reconstructed to $33 \mu\text{m}^3$ isotropic resolution using the DTV algorithm and the high-resolution anatomical data as a reference are shown in Figure 6.

Figure 7 depicts the sample DW images at $b = 2012 \text{ s}/\text{mm}^2$ and the kurtosis along principal eigenvectors of the diffusion tensor \mathbf{v}_1 , \mathbf{v}_2 , and \mathbf{v}_3 as reconstructed using compressed-sensing, super-resolution, TV, and DTV methods. Fully sampled data are shown as a reference. Edges are generally better preserved in the DTV reconstructed data, and regions of artifactually high kurtosis can be seen particularly in the TV reconstructed sham heart data.

Figure 8 and Table 1 show that the kurtosis is higher in the TAC hearts compared with the sham hearts, regardless of the method of undersampling and reconstruction. The differences were significant in all cases of kurtosis along \mathbf{v}_2 and \mathbf{v}_3 . Furthermore, only the super-resolution DTV reconstructed

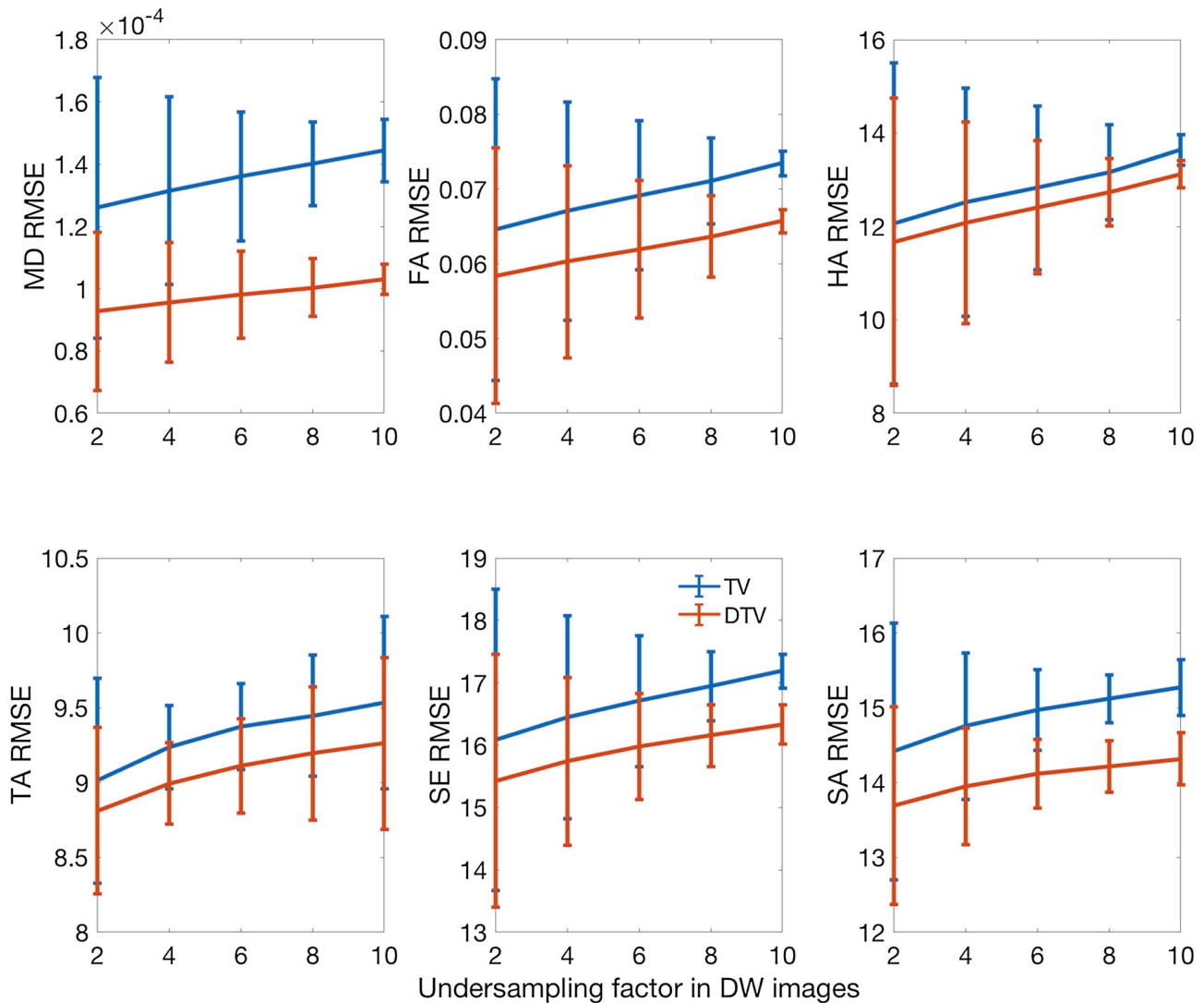


FIGURE 5 Root mean square error from experiment 2 with down-sampling of k-space by $2 \leq A_{dw} \leq 10$ in each dimension, resulting in effective undersampling of A_{dw}^3 , and reducing the effective isotropic resolution to 200, 400, 600, 800, and 1000 μm , respectively. Directional TV yielded consistently lower RMSE than TV reconstructions. Mean diffusivity (mm^2/s), FA, HA ($^\circ$), TA ($^\circ$), SE ($^\circ$), and SA ($^\circ$) are reported (mean \pm SD across hearts)

data showed significant differences in the kurtosis along \mathbf{v}_1 between TAC and sham, which were present in the fully sampled data. Artificially high kurtosis along \mathbf{v}_1 was observed in the TV reconstructed data, particularly along the subendocardium of the sham heart. Across sham, TAC, compressed sensing, and super-resolution groups, the RMSE of the kurtosis was consistently lower, by 22% on average, in the DTV compared with the TV reconstructed data, although the differences were not significant.

5 | DISCUSSION

In this work, the DTV algorithm of Ehrhardt et al was applied to diffusion MRI, with the aim of accelerating the acquisition with minimal loss in image quality and accuracy of diffusion

metrics. An 8 \times undersampling in the DW data resulted in an 80% net reduction in data requirements, factoring in fully sampled non-DW data, which could be translated into time savings.

Image reconstruction was achieved by leveraging edge information provided by a reference image to build the peripheral portions of k-space. The DTV algorithm works by promoting edges in reconstructed images occurring in regions where edges are known to exist in the reference image. This is in contrast to the original TV algorithm, which penalizes all edges. Therefore, enough data in the center of k-space must be acquired to drive the image contrast.

Because each DW image is reconstructed individually, the reconstruction algorithms presented here do not impose any specific model on the data. This also means that the reconstruction is highly parallelizable. However, it is possible to additionally impose a model that uses the DWI

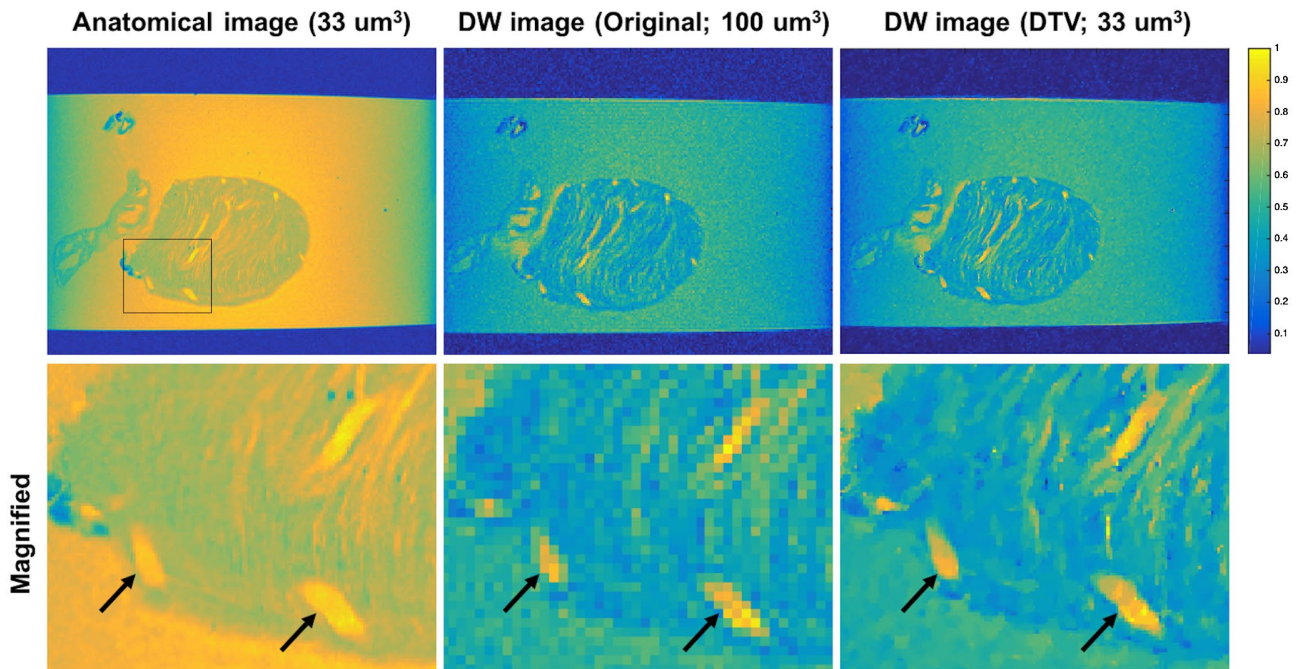


FIGURE 6 Representative DW image reconstructed at $33 \mu\text{m}^3$ isotropic resolution using the DTV algorithm and the high-resolution anatomical data as a reference. The DTV reconstructed image is less pixelated than the original image, with structures such as large vessels (arrows) corresponding well with the anatomical image

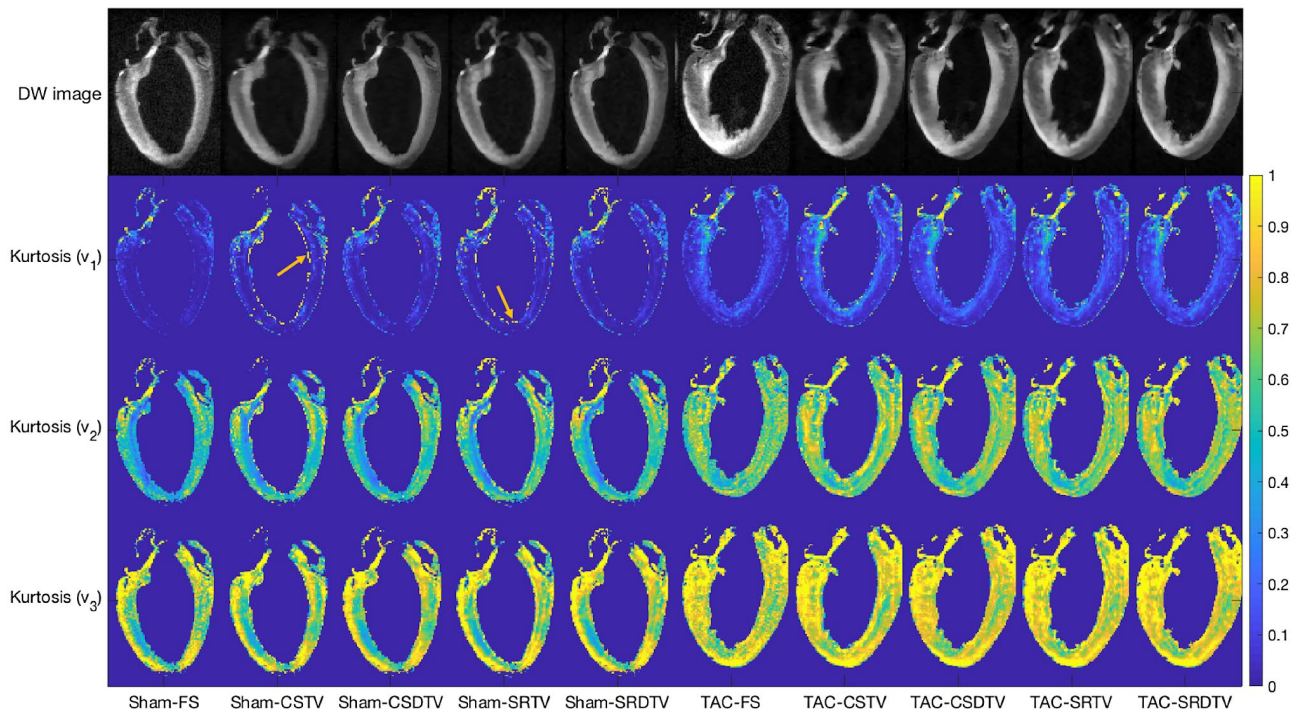


FIGURE 7 Diffusion-weighted images and kurtosis maps in representative sham and transverse aortic constriction (TAC) hearts. (Top to bottom) Single DW image at $b = 2012 \text{ s/mm}^2$ and diffusion kurtosis along principal eigenvectors of the diffusion tensor \mathbf{v}_1 , \mathbf{v}_2 , and \mathbf{v}_3 . (Left to right) Sham heart data reconstructed with fully sampled (FS) k -space in the DW images, and 12.5% k -space in the DW images reconstructed with CS, SR, TV, and DTV. Artificially high kurtosis was seen along \mathbf{v}_1 in the subendocardium of the TV-reconstructed sham heart data (arrows)

relationships in q -space, such as the diffusion tensor model or compartmental model,³⁴ to further constrain the reconstructed image.

The random acquisition scheme used in experiment 1 yielded better results than the truncated k -space scheme used in experiment 2, due to the incoherence of the random

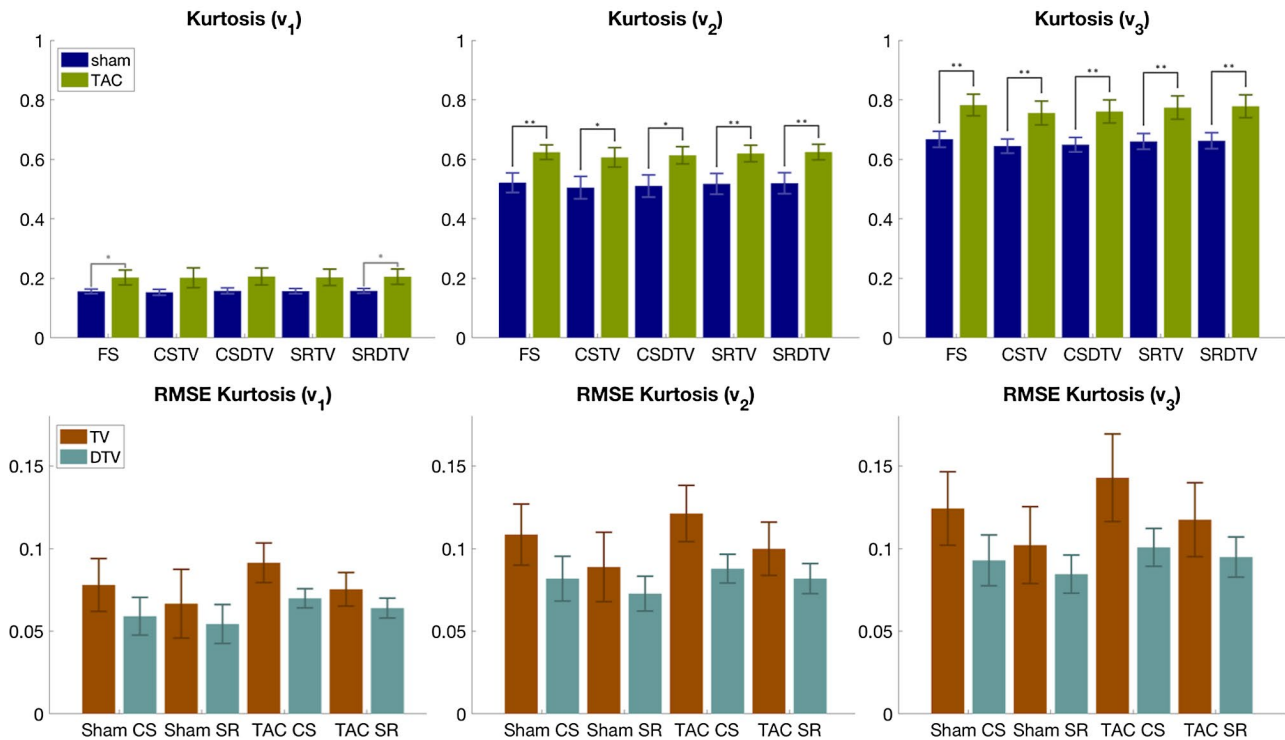


FIGURE 8 (Top) Diffusion kurtosis along principal eigenvectors of the diffusion tensor v_1 , v_2 , and v_3 (mean \pm SD across hearts). Unpaired two-tailed t-tests were performed between corresponding sham-TAC pairs with $P < .05$ (*) and $P < .01$ (**). Data reconstructed with FS, CS, SR, TV, and DTV approaches. (Bottom) Corresponding RMSE of diffusion kurtosis with respect to the fully sampled data (mean \pm SD across hearts). The differences between TV and DTV pairs were not significant at $P = .05$

undersampling pattern with TV. In experiment 2, the reconstruction algorithm was effective at removing ringing and sharpening large edges, but did not re-introduce the fine details that were lost in the down-sampling process. Among the parameters reported, the difference in RMSE between TV and DTV reconstructions was greatest in the mean diffusivity. This is due to the DTV algorithm more efficiently reducing blurring than the TV algorithm. Consequently, the effect of partial volume at the interfaces of the myocardium with the gel and buffer, wherein the latter have considerably higher diffusivities than the myocardium, is mitigated with DTV. Across parameters, there appears to be a general trend toward increasing RMSE with decreasing SD as the undersampling factor is increased. The increasing RMSE can be explained by the increased smoothing of the images at higher undersampling. The decreasing SD of RMSE across the hearts suggests that the RMSE plateaus at higher undersampling.

The results in sham and TAC hearts showed that DTV consistently outperformed TV in terms of RMSE of the kurtosis relative to the fully sampled data. We observed that the kurtosis was consistently higher in TAC than sham hearts, particularly in the directions of the second and third diffusion eigenvectors, recapitulating our previous observations in fully sampled data.³³ We additionally show that DTV was able to detect significant differences in kurtosis along v_1 between TAC and sham hearts, where TV was unable to. We note that

the sample size was small, and similar trends, not reaching statistical significance, were observed in the TV data. The artifactually high kurtosis at the subendocardial border with the buffer in the TV reconstructed data are reflective of the contributions of TV-related blurring and partial voluming of myocardium and buffer to non-mono-exponential diffusion signal behavior. This effect is also present elsewhere along the myocardial surfaces. The benefits of using DTV may be further enhanced in applications with greater microstructural heterogeneity such as myocardial infarction, and this is the subject of future investigation. Importantly, these findings demonstrate that the utility of DTV extends beyond DTI to more extensive q -space sampling approaches, in which acceleration becomes even more critical.

Here, we applied DTV in the ex vivo heart. Although the technique would be applicable in vivo, additional issues need to be considered. For example, the use of single-shot EPI may limit the application of compressed sensing due to the impracticalities of irregular k -space sampling, and the super-resolution approach may be more appropriate. The DTV algorithm also requires good alignment of the reference and target image. Therefore, it is important to design sequences that can be undersampled without changing the distortion profile relative to a fully sampled reference image. The algorithm assumes that edges are spatially co-located in the reference and target image. As shown by Ehrhardt et al,

TABLE 1 Diffusion kurtosis and its RMSE along principal eigenvectors of the diffusion tensor v_1 , v_2 , and v_3 as illustrated in Figure 8 (mean \pm SD across hearts)

		v_1			v_2			v_3				
		Mean	SD	P	Mean	SD	P	Mean	SD	P		
Kurtosis	FS	Sham	0.156	0.008	.043	0.522	0.033	.006	0.667	0.027	.005	
		TAC	0.203	0.025		0.624	0.025		0.783	0.036		
	CS TV	Sham	0.153	0.010	.081	0.505	0.038	.013	0.645	0.024	.010	
		TAC	0.202	0.033		0.607	0.033		0.756	0.040		
	CS DTV	Sham	0.158	0.010	.054	0.510	0.037	.010	0.649	0.024	.008	
		TAC	0.206	0.029		0.614	0.029		0.761	0.039		
	SR TV	Sham	0.157	0.009	.057	0.518	0.035	.008	0.660	0.026	.008	
		TAC	0.203	0.028		0.620	0.028		0.774	0.039		
	SR DTV	Sham	0.158	0.008	.044	0.520	0.035	.007	0.663	0.027	.007	
		TAC	0.206	0.026		0.625	0.026		0.779	0.038		
	RMSE Kurtosis	Sham CS	TV	0.078	0.016	.291	0.109	0.018	.414	0.124	0.022	.389
			DTV	0.059	0.011		0.082	0.014		0.093	0.015	
Sham SR		TV	0.067	0.021	.209	0.089	0.021	.545	0.102	0.023	.504	
		DTV	0.054	0.012		0.073	0.011		0.085	0.012		
TAC CS		TV	0.091	0.012	.548	0.121	0.017	.500	0.143	0.026	.441	
		DTV	0.070	0.006		0.088	0.009		0.101	0.011		
TAC SR		TV	0.075	0.010	.269	0.100	0.016	.303	0.117	0.022	.327	
		DTV	0.064	0.006		0.082	0.009		0.095	0.012		

Note: P-values of corresponding sham-TAC pairs and TV-DTV pairs are reported.

this creates the potential to suppress real edges or create false edges in the target image if this assumption is violated. One way to reduce distortion, and simultaneously increase resolution, is the use of multishot fast spin-echo sequences, including the twin navigator³⁵ and split echo approaches.³⁶ This could be combined with a weighted k-space sampling scheme and T_2 correction for compressed sensing in fast spin echo.¹⁶ However, there is the challenge of validating in vivo measurements due to the inherently lower imaging resolution and lack of a suitable high-resolution ground truth. This limitation was observed in our reconstruction of DW data at $33 \mu\text{m}^3$ isotropic resolution. Although we show potential improvements, acquisition of such high-resolution DW data may be impractical, due primarily to inadequate SNR. This difficulty is compounded in vivo due to motion and distortion. Although in vivo implementation will be challenging, we foresee that unconventional k-space sampling schemes will provide opportunities to exploit the proposed DTV technique, and this is the subject of future work.

6 | CONCLUSIONS

The DTV algorithm of Ehrhardt et al was introduced to address the problem of accelerating DWI. Two important purposes of DTV are to (1) improve the accuracy in quantification of data acquired with accelerated imaging methods, such as compressed sensing and super-resolution, and (2) to enable acquisition of large data sets, such as multiple q -shell diffusion MRI, not otherwise possible with full k-space sampling. Although applied in the heart in this context, the algorithm is non-application-specific. The algorithm was used in the context of reconstructing DW data undersampled by up to $10\times$, as well as sharpening and removing ringing artifacts from images with $10\times$ lower resolution than the reference image. One important feature of the algorithm is that it is contrast-independent, using only on the location and orientation of edges in a reference image. Furthermore, it does not require any training data or impose any particular diffusion model on the data, but could potentially yield even better results when applied in combination with these types of reconstruction algorithms.

CONFLICT OF INTEREST

A.D.M. and J.H.O. are co-founders of and have an equity interest in Insilicomed, and A.D.M. has an equity interest in Vektor Medical. A.D.M. and J.H.O. serve on the scientific advisory board of Insilicomed, and A.D.M. as scientific advisor to both companies. Some of their research grants have been identified for conflict of interest management based on the overall scope of the project and its potential benefit to these companies. The authors are required to disclose this relationship in publications acknowledging the grant support; however, the research

subject and findings reported in this study did not involve the companies in any way and have no specific relationship with the business activities or scientific interests of either company. The terms of this arrangement have been reviewed and approved by the University of California San Diego in accordance with its conflict of interest policies. The other authors have no conflicts of interest to declare.

ORCID

Irvin Teh  <https://orcid.org/0000-0002-6705-3129>

Darryl McClymont  <https://orcid.org/0000-0002-2039-7522>

Eric Carruth  <https://orcid.org/0000-0001-8184-8676>

Jeffrey Omens  <https://orcid.org/0000-0002-6851-0977>

Andrew McCulloch  <https://orcid.org/0000-0002-1708-5675>

Jürgen E. Schneider  <https://orcid.org/0000-0003-0999-5684>

REFERENCES

1. Basser PJ, Mattiello J, LeBihan D. MR diffusion tensor spectroscopy and imaging. *Biophys J*. 1994;66:259-267.
2. Tae WS, Ham BJ, Pyun SB, Kang SH, Kim BJ. Current clinical applications of diffusion-tensor imaging in neurological disorders. *J Clin Neurol*. 2018;14:129-140.
3. Gaudiano C, Clementi V, Busato F, et al. Diffusion tensor imaging and tractography of the kidneys: assessment of chronic parenchymal diseases. *Eur Radiol*. 2013;23:1678-1685.
4. Gurses B, Tasdelen N, Yencilek F, et al. Diagnostic utility of DTI in prostate cancer. *Eur J Radiol*. 2011;79:172-176.
5. Nielles-Vallespin S, Khalique Z, Ferreira PF, et al. Assessment of myocardial microstructural dynamics by in vivo diffusion tensor cardiac magnetic resonance. *J Am Coll Cardiol*. 2017;69:661-676.
6. Ferreira PF, Kilner PJ, McGill LA, et al. In vivo cardiovascular magnetic resonance diffusion tensor imaging shows evidence of abnormal myocardial laminar orientations and mobility in hypertrophic cardiomyopathy. *J Cardiovasc Magn Reson*. 2014;16:87.
7. von Deuster C, Sammut E, Asner L, et al. Studying dynamic myofiber aggregate reorientation in dilated cardiomyopathy using in vivo magnetic resonance diffusion tensor imaging. *Circ Cardiovasc Imaging*. 2016;9:e005018.
8. Wu MT, Tseng WY, Su MY, et al. Diffusion tensor magnetic resonance imaging mapping the fiber architecture remodeling in human myocardium after infarction: correlation with viability and wall motion. *Circulation*. 2006;114:1036-1045.
9. Jones DK. The effect of gradient sampling schemes on measures derived from diffusion tensor MRI: a Monte Carlo study. *Magn Reson Med*. 2004;51:807-815.
10. Zhan L, Jahanshad N, Ennis DB, et al. Angular versus spatial resolution trade-offs for diffusion imaging under time constraints. *Hum Brain Mapp*. 2013;34:2688-2706.
11. Stoeck CT, von Deuster C, Genet M, Atkinson D, Kozerke S. Second-order motion-compensated spin echo diffusion tensor imaging of the human heart. *Magn Reson Med*. 2016;75:1669-1676.
12. Taouli B, Martini AJ, Qayyum A, et al. Parallel imaging and diffusion tensor imaging for diffusion-weighted MRI of the liver:

- preliminary experience in healthy volunteers. *Am J Roentgenol*. 2004;183:677-680.
13. Setsompop K, Cohen-Adad J, Gagoski BA, et al. Improving diffusion MRI using simultaneous multi-slice echo planar imaging. *NeuroImage*. 2012;63:569-580.
 14. Mekkaoui C, Reese TG, Jackowski MP, et al. Diffusion tractography of the entire left ventricle by using free-breathing accelerated simultaneous multisection imaging. *Radiology*. 2017;282:850-856.
 15. Lau AZ, Tunnicliffe EM, Frost R, Koopmans PJ, Tyler DJ, Robson MD. Accelerated human cardiac diffusion tensor imaging using simultaneous multislice imaging. *Magn Reson Med*. 2015;73:995-1004.
 16. McClymont D, Teh I, Whittington HJ, Grau V, Schneider JE. Prospective acceleration of diffusion tensor imaging with compressed sensing using adaptive dictionaries. *Magn Reson Med*. 2016;76:248-258.
 17. Landman BA, Bogovic JA, Wan HL, ElShahaby FE, Bazin PL, Prince JL. Resolution of crossing fibers with constrained compressed sensing using diffusion tensor MRI. *NeuroImage*. 2012;59:2175-2186.
 18. Bilgic B, Setsompop K, Cohen-Adad J, Yendiki A, Wald LL, Adalsteinsson E. Accelerated diffusion spectrum imaging with compressed sensing using adaptive dictionaries. *Magn Reson Med*. 2012;68:1747-1754.
 19. Menzel MI, Tan ET, Khare K, et al. Accelerated diffusion spectrum imaging in the human brain using compressed sensing. *Magn Reson Med*. 2011;66:1226-1233.
 20. Mani M, Jacob M, Guidon A, Magnotta V, Zhong JH. Acceleration of high angular and spatial resolution diffusion imaging using compressed sensing with multichannel spiral data. *Magn Reson Med*. 2015;73:126-138.
 21. Chao TC, Chiou JYG, Maier SE, Madore B. Fast diffusion imaging with high angular resolution. *Magn Reson Med*. 2017;77:696-706.
 22. Gao H, Li LC, Zhang K, Zhou WF, Hu XP. PCLR: phase-constrained low-rank model for compressive diffusion-weighted MRI. *Magn Reson Med*. 2014;72:1330-1341.
 23. Spinner GR, Schmidt JFM, von Deuster C, Federau C, Stoeck CT, Kozerke S. Enhancing intravoxel incoherent motion parameter mapping in the brain using k-b PCA. *NMR Biomed*. 2018;31:e4008.
 24. Ehrhardt MJ, Betcke MM. Multicontrast MRI reconstruction with structure-guided total variation. *SIAM J Imaging Sci*. 2016;9:1084-1106.
 25. Jiang Y, Hsu EW. Accelerating MR diffusion tensor imaging via filtered reduced-encoding projection-reconstruction. *Magn Reson Med*. 2005;53:93-102.
 26. Peled S, Yeshurun Y. Superresolution in MRI: application to human white matter fiber tract visualization by diffusion tensor imaging. *Magn Reson Med*. 2001;45:29-35.
 27. Van Reeth E, Tham IWK, Tan CH, Poh CL. Super-resolution in magnetic resonance imaging: a review. *Concept Magn Reson A*. 2012;40A:306-325.
 28. Liang ZP, Lauterbur PC. An efficient method for dynamic magnetic resonance imaging. *IEEE T Med Imaging*. 1994;13:677-686.
 29. Poot DH, Jeurissen B, Bastiaensen Y, et al. Super-resolution for multislice diffusion tensor imaging. *Magn Reson Med*. 2013;69:103-113.
 30. Alexander DC, Zikic D, Ghosh A, et al. Image quality transfer and applications in diffusion MRI. *NeuroImage*. 2017;152:283-298.
 31. Rudin LI, Osher S, Fatemi E. Nonlinear total variation based noise removal algorithms. *Physica D*. 1992;60:259-268.
 32. Teh I, McClymont D, Burton RA, et al. Resolving fine cardiac structures in rats with high-resolution diffusion tensor imaging. *Sci Rep*. 2016;6:30573.
 33. McClymont D, Teh I, Carruth E, et al. Evaluation of non-Gaussian diffusion in cardiac MRI. *Magn Reson Med*. 2017;78:1174-1186.
 34. Nedjati-Gilani S, Alexander DC, Parker GJM. Regularized super-resolution for diffusion MRI. In: Proceedings of the 5th IEEE International Symposium on Biomedical Imaging: From Nano to Macro, Paris, France, 2008. pp 875-878.
 35. Mori S, van Zijl PCM. A motion correction scheme by twin-echo navigation for diffusion-weighted magnetic resonance imaging with multiple RF echo acquisition. *Magn Reson Med*. 1998;40:511-516.
 36. Schick F. SPLICE: sub-second diffusion-sensitive MR imaging using a modified fast spin-echo acquisition made. *Magn Reson Med*. 1997;38:638-644.

How to cite this article: Teh I, McClymont D, Carruth E, Omens J, McCulloch A, Schneider JE. Improved compressed sensing and super-resolution of cardiac diffusion MRI with structure-guided total variation. *Magn Reson Med*. 2020;84:1868-1880.

<https://doi.org/10.1002/mrm.28245>