

UC Davis

UC Davis Previously Published Works

Title

YeATSAM analysis of the walnut and chickpea transcriptome reveals key genes undetected by current annotation tools

Permalink

<https://escholarship.org/uc/item/1f90k151>

Authors

Chakraborty, Sandeep

Martínez-García, Pedro J

Dandekar, Abhaya M

Publication Date

2016

DOI

10.12688/f1000research.10040.1

Copyright Information

This work is made available under the terms of a Creative Commons Attribution License, available at <https://creativecommons.org/licenses/by/4.0/>

Peer reviewed



RESEARCH ARTICLE

YeATSAM analysis of the walnut and chickpea transcriptome reveals key genes undetected by current annotation tools [version 1; referees: 2 approved, 1 not approved]

Sandeep Chakraborty, Pedro J. Martínez-García, Abhaya M. Dandekar

Department of Plant Sciences, University of California, Davis, USA

v1 First published: 17 Nov 2016, 5:2689 (doi: [10.12688/f1000research.10040.1](https://doi.org/10.12688/f1000research.10040.1))
 Latest published: 17 Nov 2016, 5:2689 (doi: [10.12688/f1000research.10040.1](https://doi.org/10.12688/f1000research.10040.1))

Abstract

Background: The transcriptome, a treasure trove of gene space information, remains severely under-used by current genome annotation methods. **Methods:** Here, we present an annotation method in the YeATS suite (YeATSAM), based on information encoded by the transcriptome, that demonstrates artifacts of the assembler, which must be addressed to achieve proper annotation. **Results and Discussion:** YeATSAM was applied to the transcriptome obtained from twenty walnut tissues and compared to MAKER-P annotation of the recently published walnut genome sequence (WGS). MAKER-P and YeATSAM both failed to annotate several hundred proteins found by the other. Although many of these unannotated proteins have repetitive sequences (possibly transposable elements), other crucial proteins were excluded by each method. An egg cell-secreted protein and a homer protein were undetected by YeATSAM, although these did not produce any transcripts. Importantly, MAKER-P failed to classify key photosynthesis-related proteins, which we show emanated from Trinity assembly artifacts potentially not handled by MAKER-P. Also, no proteins from the large berberine bridge enzyme (BBE) family were annotated by MAKER-P. BBE is implicated in biosynthesis of several alkaloids metabolites, like anti-microbial berberine. As further validation, YeATSAM identified ~1000 genes that are not annotated in the NCBI database by Gnomon. YeATSAM used a RNA-seq derived chickpea (*Cicer arietinum* L.) transcriptome assembled using Newbler v2.3. **Conclusions:** Since the current version of YeATSAM does not have an *ab initio* module, we suggest a combined annotation scheme using both MAKER-P and YeATSAM to comprehensively and accurately annotate the WGS.

Open Peer Review

Referee Status:

	Invited Referees		
	1	2	3
version 1 published 17 Nov 2016	 report	 report	 report

- Carmen Cuadrado**, SGIT - INIA (Deputy Directorate General of Research and Technology-National Institute for Agricultural and Food Research and Technology) Spain, **Africa Sanchiz**, SGIT-INIA Spain
- Margaret E. Staton**, University of Tennessee USA, **Miriam Payá Milans**, University of Tennessee USA
- Nic Herndon**, University of Connecticut USA

Discuss this article

Comments (0)

Corresponding authors: Sandeep Chakraborty (sanchak@gmail.com), Abhaya M. Dandekar (amdandekar@ucdavis.edu)

How to cite this article: Chakraborty S, Martínez-García PJ and Dandekar AM. **YeATSAM analysis of the walnut and chickpea transcriptome reveals key genes undetected by current annotation tools [version 1; referees: 2 approved, 1 not approved]** *F1000Research* 2016, 5:2689 (doi: [10.12688/f1000research.10040.1](https://doi.org/10.12688/f1000research.10040.1))

Copyright: © 2016 Chakraborty S *et al.* This is an open access article distributed under the terms of the [Creative Commons Attribution Licence](#), which permits unrestricted use, distribution, and reproduction in any medium, provided the original work is properly cited.

Grant information: AMD wishes to acknowledge grant support from the California Walnut Board.
The funders had no role in study design, data collection and analysis, decision to publish, or preparation of the manuscript.

Competing interests: No competing interests were disclosed.

First published: 17 Nov 2016, 5:2689 (doi: [10.12688/f1000research.10040.1](https://doi.org/10.12688/f1000research.10040.1))

Introduction

The genome of a particular organism is static in all cells, unlike the dynamic transcriptome, which is the transcription of the gene space into RNA molecules in a fashion responsive to a variety of factors, such as developmental stage, tissue, and external stimuli. RNA-seq, a high-throughput RNA sequencing method, has radically transformed the identification of transcripts and quantification of transcriptional levels (Flintoft, 2008; Wang *et al.*, 2009). It is supported by a diverse set of computational methods for analyzing the resulting data (Chakraborty *et al.*, 2015; Chang *et al.*, 2015; Chu *et al.*, 2013; Fu *et al.*, 2012; Grabherr *et al.*, 2011; Lohse *et al.*, 2012; Mbandi *et al.*, 2015; Schulz *et al.*, 2012; Simpson *et al.*, 2009; Trapnell *et al.*, 2009; Trapnell *et al.*, 2012; Wang *et al.*, 2010; Zerbino & Birney, 2008).

Rapid advances in genome sequencing technologies have generated sequences for a deluge of organisms and species. The task of annotating these sequences has been addressed by several flows. These pipelines are categorized in <http://omictools.com/genome-annotation-category> and <http://genometools.org/> and reviewed in (Yandell & Ence, 2012). Here, we focus specifically on MAKER-P (Campbell *et al.*, 2014; Holt & Yandell, 2011; Law *et al.*, 2015; Neale *et al.*, 2014), which was used to annotate the recently published walnut genome sequence (WGS) (Martínez-García *et al.*, 2016).

In the current study, the YeATS suite (Chakraborty *et al.*, 2015) was enhanced to include genome annotation capabilities using RNA-seq-derived transcriptomes (YeATS annotation module - YeATSAM). First, the Trinity-assembled transcriptome obtained from twenty different tissues was compared to the WGS, excluding transcripts emanating from extraneous sources. This step incidentally revealed both biodiversity and plant-microbe interactions in walnut tree(s) from Davis, California (Chakraborty *et al.*, 2016a). The WGS-derived transcripts were split into three open reading frames (ORFs), which were subjected to BLAST analysis using a plant proteome database obtained from the Ensembl database (Kersey *et al.*, 2016). Transcripts can contain more than one significant ORF and must be handled differently depending on whether they map to the same or a different protein. The resulting analysis provided the WGS annotation.

Both MAKER-P and YeATSAM failed to annotate several hundred proteins annotated by the other. Many of the proteins had repetitive sequences or domains that, although difficult to detect, do not represent critical proteins during annotation. An egg cell-secreted protein (Sprunck *et al.*, 2012), a copper chaperone (Shin *et al.*, 2012), and a clavata3/ESR-Related protein (Kinoshita *et al.*, 2007) were among the proteins not detected through the YeATSAM flow. Some proteins undetected in the MAKER-P flow are more significant in the context of a plant genome: several photosynthesis-related proteins encoded by the chloroplast (Nelson & Yocum, 2006) and the large family of FAD-binding berberine bridge enzymes (BBE) involved in biosynthesis of antimicrobial benzophenanthridines (Cheney, 1963; Winkler *et al.*, 2008). We posited possible reasons for such exclusions and recommend incorporating both flows for comprehensive enumeration of genes in the WGS.

As further validation, YeATSAM was applied to chickpea (*Cicer arietinum* L.), an important pulse crop with many nutritional and health benefits (Jukanti *et al.*, 2012). The RNA-seq-derived transcriptome of chickpea has also been sequenced (Garg *et al.*, 2011) and was processed through the YeATSAM pipeline to identify ~1000 proteins that are encoded by these transcripts, but are not annotated in the NCBI database, most of which were annotated using Gnomon (Souvorov *et al.*, 2010).

Methods

The input to YeATSAM is a set of post-assembly transcripts (\emptyset_{TRS}) and the walnut genome sequence (WGS) (Figure 1). Transcripts that do not align to the WGS were removed (Chakraborty *et al.*, 2016a). A BLAST database of protein peptides (plantpep.fasta: 1M sequences) using ~30 organisms (list.plants) from the Ensembl genome was created (Kersey *et al.*, 2016). The three longest open reading frames (ORF), obtained using the 'getorf' utility in the EMBOSS suite (Rice *et al.*, 2000), for each transcript in (\emptyset_{TRS}) underwent BLAST analysis (Camacho *et al.*, 2013) to the 'plantpep.fasta'. For cutoff E-value=1E-8, depending on the number of matches, the transcripts were clustered as:

1. None - either a previously unknown gene or non-coding RNA.
2. One - unique ORF.
3. Multiple ORFs matching to the same gene - merge the ORFs if the E-value of the combined ORF is significantly lower.
4. Multiple ORFs matching to different genes - duplicate the transcripts, associating each transcript with a different ORF.

In vitro methods

Fifteen samples of walnut tissue were gathered from Chandler trees growing in the Stuke block at UC Davis between April and October 2008. Four additional samples were taken from Chandler plant material from the same orchard maintained in tissue culture. Several grams of leaf and root tissue from each plant were frozen in liquid nitrogen and then transferred to a -80 C freezer. RNA was isolated from each sample using the hot borate method (Wilkins & Smart, 1996) followed by purification and DNase treatment using an RNA/DNA Mini Kit (Qiagen, Valencia, CA) per the manufacturer's protocol. High-quality RNA was confirmed by running an aliquot of each sample on an Experion Automated Electrophoresis System (Bio-Rad Laboratories, Hercules, CA). The cDNA libraries were constructed following the Illumina mRNA-sequencing sample preparation protocol (Illumina Inc., San Diego, CA). Final elution was performed with 16µL RNase-free water. The quality of each library was determined using a BioRad Experion (BioRad, Hercules, CA). Each library was run as an independent lane on a Genome Analyzer II (Illumina, San Diego, CA) to generate 85bp paired-end sequences from each cDNA library. Over a billion reads were obtained. Prior to assembly, all reads underwent quality control for paired-end reads and trimming using Sickel v1.33 (Joshi & Fass, 2011). The minimum read length was 45bp with a minimum Sanger quality score of 35. The quality-controlled reads were *de novo* assembled

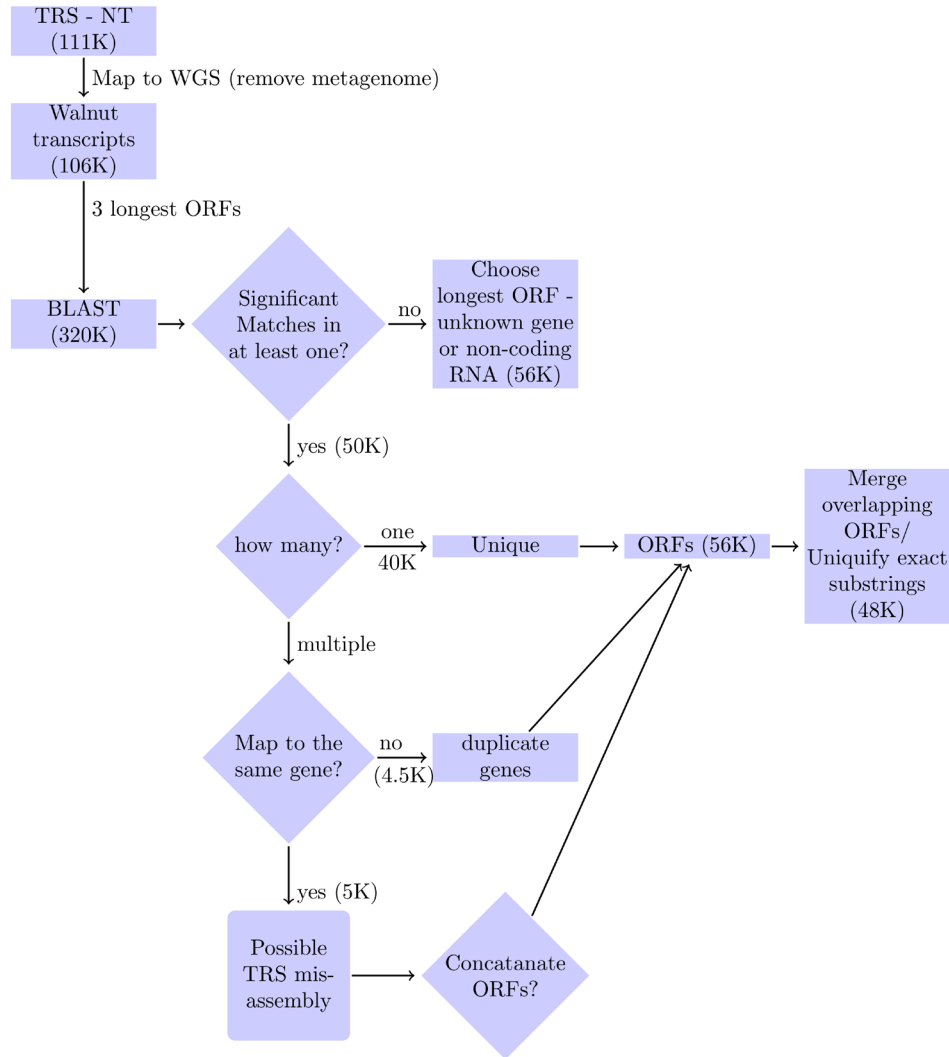


Figure 1. YeATSAM flow. First, transcripts from extraneous organisms are pruned. Next, the three longest open reading frames (ORFs) from each transcript undergo BLAST analysis to a database of plant peptides. Depending on the number of significant matches, the transcripts are clustered as: **(a)** None - either a previously unknown gene, or non-coding RNA. **(b)** One - Unique ORF **(c)** Multiple ORFs matching to the same gene - merge the ORFs if the Evaluate of the combined ORF is significantly lower. **(d)** Multiple ORFs matching to different genes - duplicate the transcripts, associating each with a different ORF. Subsequently, the ORFs are merged based on overlapping amino acid sequences and exact substrings are removed.

with Trinity v2.0.6 (Grabherr *et al.*, 2011). Standard parameters were used and the minimum contig length was 300bp. Individual assemblies for each library and a combined assembly of all tissues were performed.

The walnut genome sequence has been released to the public domain (<http://ucanr.edu/sites/wgig/>). The Illumina (Genome Analyzer II) for all 20 tissues can be accessed at <http://www.ncbi.nlm.nih.gov/sra/PRJNA232394>.

The transcriptome of *Cicer arietinum* (transHybrid.fasta, ICC4958; Desi chickpea) was obtained from <http://www.nipgr.res.in/ctdb.html> (Garg *et al.*, 2011). The dataset 'represents optimized *de novo* hybrid assembly of 454 and short-read sequence data.' About two

million 454 reads were assembled using Newbler v2.3 followed by hybrid assembly with 53409 transcripts generated by optimized short-read data assembly using TGICL, as reported previously (Garg *et al.*, 2011). The set of annotated proteins from chickpea was obtained from the NCBI database (chickpea.pep.fasta, N=34198).

PHYML v3.0 was used to generate phylogenetic trees from alignments (Guindon *et al.*, 2005). Multiple sequence alignment was done using ClustalW (Larkin *et al.*, 2007) and figures were generated using the ENDscript server 2.0 (Robert & Gouet, 2014). The source code written in Perl is provided as Dataset 1 (YeATSAM.tgz). A README is provided inside the top-level directory for installation and running the programs.

Results and discussion

The input to YeATSAM was ~111K Trinity-assembled transcripts (Combined TrinityFull.fasta) (Figure 1). Each transcript was aligned to the WGS (wgs.5d.scafSeq200+.trimmed) using BLAST (Camacho *et al.*, 2013). Transcripts that did not align to the WGS (cutoff BLAST bitscore=75) were excluded (Chakraborty *et al.*, 2016a). Those transcripts that aligned to the WGS (list.transcriptome.clean: 106K) were split into the three longest open reading frames (ORF) (list.transcriptome.clean.ORFS: 320K).

A BLAST database of protein peptides (plantpep.fasta:1M sequences) using ~30 organisms (list.plants) from the Ensembl genome was created (Kersey *et al.*, 2016). The availability of proteomes from related organisms accelerates the annotation. The BLAST results of list.transcriptome.clean.ORFS: 320K on 'plantpep.fasta' was processed using a cutoff: bitscore=60, Eval=1E-10.

Merging ORFs: broken transcripts

There are two instances in which ORFs can be merged to create a longer amino acid sequence. The first scenario occurs when a particular transcript has multiple ORFs that match to the same protein with high significance, indicating that a sequencing or assembly error has broken a contiguous ORF (Chakraborty *et al.*, 2015). In total, 5% of the present transcripts (5,000 of 106,000) had two or more ORFs matching with high significance to the same protein, exactly mirroring the 5% error rates seen in transcripts restricted to the transcriptome from the tissue at the heartwood/sapwood transition zone in black walnut (Chakraborty *et al.*, 2015). While most of these transcripts have repetitive elements, there were other non-repetitive sequences with this particular problem. C20727_G1_I1 is one example: it has two ORFs, ORF_15 and ORF_36, that match a DNA repair metallo- β -lactamase family protein (Accession number: XP007043420.1) with Evalues=9E-70 and 6E-96, respectively (Figure 2a). The two ORFs were merged (inserting the sequence 'ZZZ', although the length of the missing fragment is not known) since the Evaluate of the combined ORF reduces to 2E-175 and the merged sequence was chosen as representative for the transcript. ORFs are not merged when the combined ORF did not significantly decrease the Evaluate and the longer ORF was selected to represent the transcript.

The other scenario occurs when the assembler fails to merge two transcripts into a single one. In this instance, two ORFs emanating from different transcripts with significant overlaps were merged. While the merging of two ORFs was described previously (Chakraborty *et al.*, 2015), we introduced an additional filter to select mergeable ORFs based on whether the E-value obtained by merging the two ORFs is significantly reduced. For example, transcripts C53209_G8_I1 and C53209_G6_I1 both map to the scaffold SUPER472 and their corresponding ORFs can be merged based on the sequence string 'PNRSSLP' (Figure 2b). The individual ORFs and the combined ORFs align to an autophagy-related protein (TAIR ID: AT3G49590.2) with Evalues 2e-106, 8e-63, and 1e-180, respectively. The increased significance of the combined ORF, in addition to other checks, like ensuring that mapping is to the same scaffold, adds further support to the fact that these transcripts should have been contiguous in the final assembled transcriptome.

Transcripts with multiple ORFs

About 3% of transcripts have ORFs that map to different proteins. Some transcripts should not have been merged. C1089_G1_I1 is an interesting example: a 4574 nt transcript that maps to the chloroplast and encodes two genes. One is highly variable and the other is conserved. The two ORFs, ORF_64 (fwd: 1117-2631) and ORF_108 (fwd: 3195 - 4271), map to maturase K (TAIR ID: ATCG00040.1) and photosystem II reaction center protein (TAIR ID: ATCG00020.1) with very high significance. Maturase K is a good candidate for barcoding angiosperms because it has highly variable coding sequences (Yu *et al.*, 2011), while the photosystem II reaction center protein is completely conserved (100% similarity with *Arabidopsis*). Another example is C19241_G1_I1 (4702 nt), split into ORF_68 (fwd: 176-3487) and ORF_115 (reverse: 4509-4096) encoding a damaged DNA binding protein (TAIR ID: AT4G05420.1) and photosystem I subunit K (TAIR ID: AT1G30380.1) with high significance, respectively. These transcripts are split in the YeATSAM flow, resulting in one ORF per transcript. Subsequently, this artifact of the Trinity assembly led to several unannotated proteins in the MAKER-P flow.

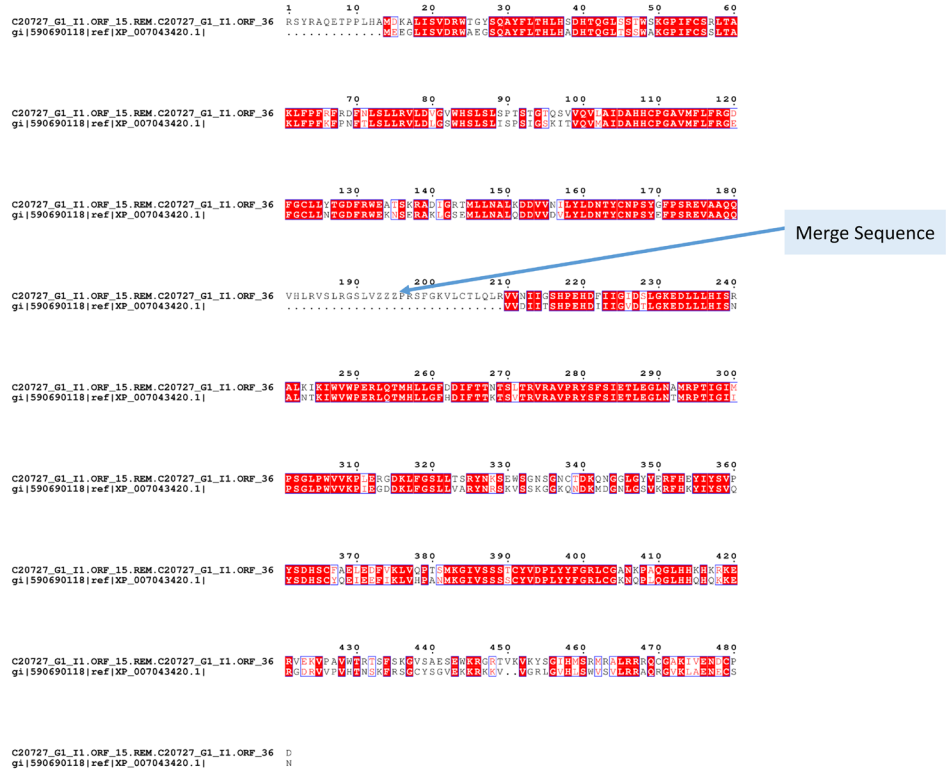
Identifying genes not detected by either YeATSAM or MAKER-P

We compared the annotations of walnut by MAKER-P (walnut.wgs.5d.all.maker.proteins.fasta) and YeATSAM (DB.ORFBEST.60). MAKER-P and YeATSAM each failed to annotate several proteins identified by the other (MAKER-P=4000; YeATSAM=700). Although most of these unannotated proteins have repetitive sequences (transposable elements), some vital, non-repetitive proteins were excluded by each method. For example, an egg cell-secreted protein ('WALNUT 00001389-RA') (Sprunck *et al.*, 2012), a Clavata3/esr-related gene ('WALNUT 00023705-RA') (Kinoshita *et al.*, 2007) and a copper chaperone ('WALNUT 00006344-RA') (Shin *et al.*, 2012) were not annotated in the YeATSAM flow. These genes do not have transcripts in the twenty tissues analyzed in the current study and are most likely pseudogenes.

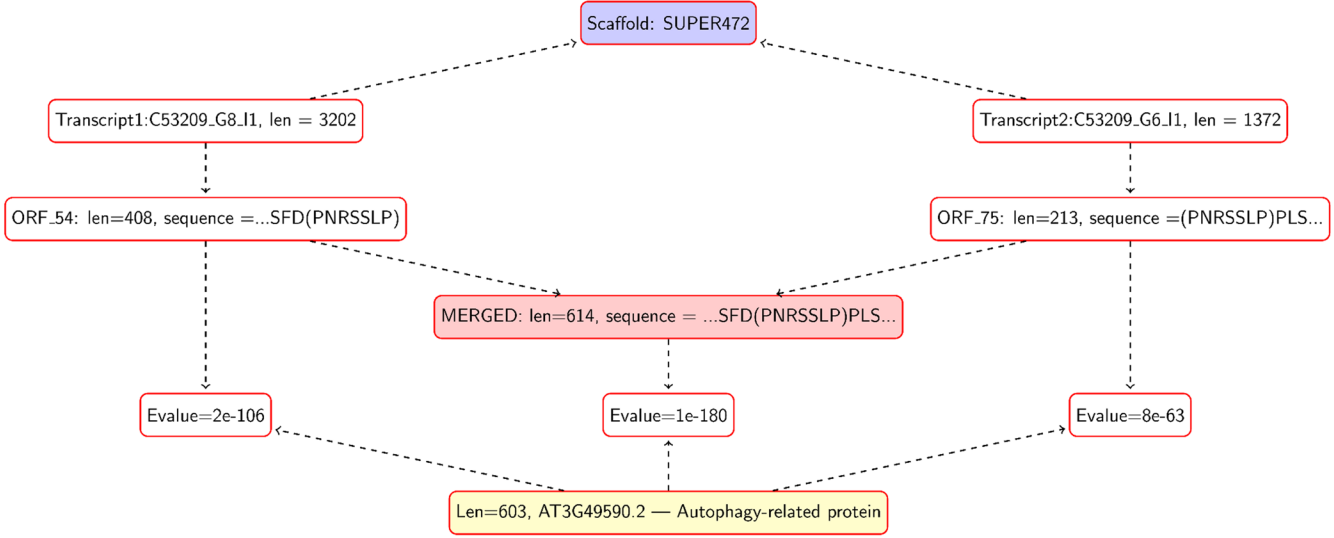
Proteins unannotated by MAKER-P

MAKER-P fails to annotate many key photosystem-related proteins (Table 1). The transcript C59245_G1_I1 has ORF_43 (fwd: 176-1714) and ORF_70 (fwd: 2212-2496) mapping to photosystem II reaction center protein B (PSBB) and photosystem II reaction center protein H (PSBH), respectively. While MAKER-P does annotate PSBB, it failed to detect PSBH. These proteins map to transcripts encoding two significant ORFs (>1E-10), indicating that failure to handle this might have excluded these proteins. Also, these proteins are encoded by the chloroplast. However, this limitation of MAKER-P is not confined to transcripts emanating from the chloroplast. For example, C48031_G3_I1 encodes a leucine-rich repeat transmembrane protein kinase (AT5G48940.1) and a metallo- β -lactamase family protein (TAIR ID: AT4G33540.1) and is mapped to scaffold 'SUPER374'. MAKER-P failed to annotate the β -lactamase family protein.

Furthermore, MAKER-P failed to annotate any FAD-binding berberine bridge enzymes (BBE) in the WGS (Kutchan & Ditttrich, 1995). These enigmatic enzymes are implicated in the transformation of (S)-reticuline to (S)-scoulerine during



(a)



(b)

Figure 2. Open reading frames (ORF) that can be merged. (a) ORFs from the same transcript: C20727_G1_I1 has two ORFs (ORF 15 and ORF 36) matching to a DNA repair metallo-β-lactamase family protein (Accession number: XP007043420.1) with high significance. We merged the two ORFs (inserting 'ZZZ') since the Evalue of the combined ORF is significantly reduced. (b) ORFs from different transcripts: We merged ORFs from two different transcripts (C53209_G8_I1 and C53209_G6_I1), since both transcripts map to the same scaffold (SUPER472) can be overlapped based on the sequence string 'PNRSSLP', and the merged ORF has a significantly reduced Evalue.

Table 1. Key photosystem-related proteins in the chloroplast not annotated by MAKER-P and YeATSAM. These transcripts have multiple open reading frames (ORFs) mapping to different proteins with high significance. For example, C59245_G1_I1 has another ORF (43) which maps to photosystem II reaction center protein B (PSBB). MAKER-P annotates PSBB, but not PSBH. These transcripts all emanate from the chloroplast, although not all genes that MAKER-P failed to annotate were from the chloroplast. Genes predicted by MAKER-P that are not identified by YeATSAM are listed with their homology to corresponding genes in the TAIR database.

TRS	ORF	Len	TAIR	Description	E-value
C52274_G4_I1_B	189	231	ATCG00720.1	PETB photosynthetic electron transfer B	4.00e-155
C52274_G4_I1_C	231	177	ATCG00730.1	PETD photosynthetic electron transfer D	1.00e-108
C53854_G1_I1_A	45	98	ATCG00070.1	PSBK photosystem II reaction center protein K precursor	1.00E-27
C53854_G1_I1_B	62	62	ATCG00080.1	PSBI photosystem II reaction center protein I	3.00E-20
C54343_G2_I1_A	8	91	ATCG00580.1	PSBE photosystem II reaction center protein E	4.00E-54
C59245_G1_I1_B	70	95	ATCG00710.1	PSBH photosystem II reaction center protein H	4.00E-43
WALNUT_00014004-RA	-	1117	AT5G16850.1	TERT Telomerase reverse transcriptase	0.0
WALNUT_00018632-RA	-	295	ATMG00560.1	RPL2 Nucleic acid-binding, OB-fold-like protein	9e-152
WALNUT_00019747-RA	-	326	AT1G24040.1	Acyl-CoA N-acyltransferases (NAT) superfamily protein	5e-121
WALNUT_00031866-RA	-	311	AT5G07810.1	SNF2 domain-containing protein/helicase domain-containing	9e-115
WALNUT_00020600-RA	-	155	ATCG01240.1	RPS7.2 ribosomal protein S7 chrC:140704-141171	1e-108
WALNUT_00016414-RA	-	231	AT5G41850.1	alpha/beta-Hydrolases superfamily protein chr5:16756698-16757791	6e-96
WALNUT_00027509-RA	-	289	AT2G43190.3	ribonuclease P family protein chr2:17956220-17957833	2e-94
WALNUT_00022174-RA	-	389	AT2G07707.1	Plant mitochondrial ATPase, F0 complex, subunit	5e-86
WALNUT_00018616-RA	-	124	ATCG00890.1	NDHB.1 NADH-Ubiquinone/plastoquinone (complex I)	1e-79
WALNUT_00007302-RA	-	924	AT5G14990.1	BEST Arabidopsis thaliana protein match is: myosin	2e-79

benzophenanthridine alkaloid biosynthesis in plants (Winkler *et al.*, 2006). This pathway is over-expressed upon osmotic stress and pathogen attack (Attila *et al.*, 2008; González-Candelas *et al.*, 2010), provides resistance in lettuce, sunflower and transgenic tobacco by generating anti-microbial compounds (Custers *et al.*, 2004), and has unknown functions at specific developmental stages in *Arabidopsis* (Irshad *et al.*, 2008; Pagnussat *et al.*, 2005). Moreover, it is expressed in floral nectar (Nectarin V, *NrBBE*) (Carter & Thornburg, 2004) and roots of tobacco (Kajikawa *et al.*, 2011), and in xylem sap of cabbage (Ligat *et al.*, 2011) and grapevine (Chakraborty *et al.*, 2016b). *NrBBE* was constitutively expressed in the *Phytophthora infestans*-resistant potato genotype SW93-1015 (Ali *et al.*, 2012). Benzophenanthridines are antimicrobial; the California poppy (*Eschscholzia californica*) is used as a traditional medicine (Cheney, 1963; Oldham *et al.*, 2010). Oral administration of the alkaloid berberine isolated from a Chinese herb lowered cholesterol in 32 hypercholesterolemic patients over three months (Kong *et al.*, 2004). Berberine has also been shown to possess antidiabetic properties (Lee *et al.*, 2006).

The number of BBE genes in different plant species varies significantly from one in moss (*Physcomitrella patens*) to 64 in western poplar (*Populus trichocarpa*) (Daniel *et al.*, 2015). *A. thaliana* has 27 TAIR IDs assigned to BBE enzymes, with two splice variants (Supplementary Table 1) (Daniel *et al.*, 2015). Based on the current transcriptome, there are four full length

BBE genes (*JrBBE1* to 4) that map to different scaffolds in the WGS, in addition to other fragmented transcripts (Table 2 and Table 3). *JrBBE1* (C54052_G1_I1) maps to the scaffold JCF7180001213852 and encodes a 564 aa long ORF, which has significant matches to Uniprot:P30986. The closest match of Uniprot:P30986 (with a low significance of 1E-07) to the MAKER-P annotation is 'WALNUT 00019959-RA', a 476 aa long cytokinin dehydrogenase. The sequence alignment of *JrBBE* genes to Uniprot (P30986) is shown (Figure 3a).

As with the walnut transcriptome, the chickpea transcriptome (transHybrid.fasta: n=34760) (Garg *et al.*, 2011) was split into three ORFs, each of which was BLAST'ed to the subset of plant proteins created from the Ensembl database. Subsequently, the ORFs with significant homology to this database (n=29263) were BLAST'ed to the set of annotated chickpea proteins in the NCBI database (n=34198). Most of these annotations were done using Gnomon (Souvorov *et al.*, 2010) (<http://www.ncbi.nlm.nih.gov/bioproject/PRJNA190909>), which analyzed ~35000 transcripts. There are ~1500 proteins identified by YeATSAM that are absent in the NCBI database (Evalue cutoff 1E-10). Some of these proteins and their corresponding genes in the TAIR database are shown (Table 4). TC00902 is an interesting example with two merged genes: a hydrogen ion-transporting ATP synthase (TAIR ID: ATMG00640.1) and a cytochrome C biogenesis (TAIR ID: ATMG00900.1). While Gnomon identified the cytochrome C

Table 2. FAD-binding berberine bridge enzymes (BBE) are undetected in MAKER-P. These oxidases are involved in the benzophenanthridine alkaloid biosynthesis in plants. *Arabidopsis* has 27 loci for this family (and a splice variant) (Table 3). Here, there are four full length berberine bridge enzyme (BBE) genes (named *JrBBE1-4*) identified using the transcriptome. Some of the proteins are truncated (like C54286_G1_I1), which might be an artifact of the Trinity assembler. Thus, this is not a complete enumeration of the *JrBBE* genes.

Id	Transcript	Length	Scaffold	ORF	TAIR Id
<i>JrBBE1</i>	C54052_G1_I1	564	JCF7180001213852	34	AT1G26420.1
<i>JrBBE2</i>	C53871_G1_I1	564	JCF7180001217410	28	AT1G30700.1
<i>JrBBE3</i>	C55152_G1_I1	552	JCF7180001222284:2429142-2890931	37	AT4G20820.1
<i>JrBBE4</i>	C7952_G1_I1	559	JCF7180001218369	110	AT2G34790.1
	C54286_G2_I1	307	JCF7180001217076	35	AT1G11770.1
	C54286_G1_I1	128	JCF7180001217076	7	AT4G20830.1
	C12765_G1_I1	114	JCF7180001218369	8	AT4G20840.1
	C51815_G1_I4	168	JCF7180001218369	29	AT4G20860.1

Table 3. Expression counts (normalized) of transcripts from the FAD-binding berberine bridge enzyme (BBE) family. The genes have tissue-specific expression - *JrBBE3* is highly expressed in the roots and transition zone. The tissue abbreviations are from Chakraborty *et al.*, 2016a.

id	Transcript	CE	CI	CK	EM	FL	HC	HL	HP	HU	IF	LE	LM	LY	PK	PL	PT	RT	SE	TZ
<i>JrBBE1</i>	C54052_G1_I1										44				4	136	197			
<i>JrBBE2</i>	C53871_G1_I1	2		3		2			1	1			15					79	1	
<i>JrBBE3</i>	C55152_G1_I1	43	34	25		62						1	2		35			1040		346
<i>JrBBE4</i>	C7952_G1_I1	32	85	8		55	11	711	15	8	241	137	37	123	315	420	160	217	5	18
	C54286_G2_I1					33						20		30						
	C54286_G1_I1					19						7		24						
	C12765_G1_I1	26	77	2		39	4	42	8	23	23	19	5	22	9	2	8	6		
	C51815_G1_I4																			

biogenesis protein (Genbank: XP_004500083.1), it failed to identify the ATP synthase. Unlike MAKER-P, Gnomon generates transcripts through predictive algorithms and does not take the transcriptome as an input. Notwithstanding, these chickpea genes remain unannotated despite the presence of a straightforward method to detect them from available transcripts.

Future work

Among the ~700 genes not detected by YeATSAM, there are ~500 genes with no matches in the complete 'nr' database. Of these, ~300 have no transcripts (SetA), while the remaining ~200 have matches among the transcripts (SetB). Considering the sensitivity of RNA-seq and the wide coverage of twenty tissues, it is a definite possibility that SetA are pseudogenes. Future work in YeATSAM will focus on methods to distinguish these two classes of genes.

Conclusions

The availability of a RNA-seq-derived transcriptome from a newly sequenced organism like walnut, for which there are related annotated genomes (*Arabidopsis*, *Vitis*, etc), immensely simplifies annotation of the genome and influences the choice of annotation software. Here, we introduce a new annotation method

in the YeATS suite (YeATS Annotation Module - YeATSAM), which was used to annotate the newly-sequenced walnut genome using a simple workstation. The key differentiating factor in YeATSAM is the splitting of the assembled transcriptome into multiple ORFs (Chakraborty *et al.*, 2015). Transcripts often have more than one significant ORF that must be handled differently depending on whether they map to the same or different proteins. We show that YeATSAM failed to annotate ~700 genes identified by MAKER-P, while identifying ~4000 genes missed by MAKER-P. While most of these genes have repetitive stretches, both methods missed vital genes identified by the other. Since many of the additional genes identified by MAKER-P have no known transcripts, we posit that these were identified using *ab initio* methods. In the absence of such an *ab initio* module in YeATSAM, we propose a combined method using both MAKER-P and YeATSAM to annotate the WGS. YeATSAM was also applied to the chickpea transcriptome and identified ~1000 proteins that are not annotated in the NCBI database. This transcriptome was assembled using Newbler v2.3 (Garg *et al.*, 2011) and most of the 34198 chickpea proteins in the NCBI database were annotated using Gnomon, the standard annotation tool (<http://www.ncbi.nlm.nih.gov/genome/guide/gnomon.shtml>).

E. californica. PDB-3D2D

E. californica. PDB-3D2D
JrFBRO1.C54052_G1_I1
JrFBRO2.C53871_G1_I1
JrFBRO3.C55152_G1_I1
JrFBRO4.C7952_G1_I1
AtBBE15.PDB-4UD8
N.tabacum.NECTAR5

E. californica. PDB-3D2D

E. californica. PDB-3D2D
JrFBRO1.C54052_G1_I1
JrFBRO2.C53871_G1_I1
JrFBRO3.C55152_G1_I1
JrFBRO4.C7952_G1_I1
AtBBE15.PDB-4UD8
N.tabacum.NECTAR5

E. californica. PDB-3D2D

E. californica. PDB-3D2D
JrFBRO1.C54052_G1_I1
JrFBRO2.C53871_G1_I1
JrFBRO3.C55152_G1_I1
JrFBRO4.C7952_G1_I1
AtBBE15.PDB-4UD8
N.tabacum.NECTAR5

E. californica. PDB-3D2D

E. californica. PDB-3D2D
JrFBRO1.C54052_G1_I1
JrFBRO2.C53871_G1_I1
JrFBRO3.C55152_G1_I1
JrFBRO4.C7952_G1_I1
AtBBE15.PDB-4UD8
N.tabacum.NECTAR5

E. californica. PDB-3D2D

E. californica. PDB-3D2D
JrFBRO1.C54052_G1_I1
JrFBRO2.C53871_G1_I1
JrFBRO3.C55152_G1_I1
JrFBRO4.C7952_G1_I1
AtBBE15.PDB-4UD8
N.tabacum.NECTAR5

E. californica. PDB-3D2D

E. californica. PDB-3D2D
JrFBRO1.C54052_G1_I1
JrFBRO2.C53871_G1_I1
JrFBRO3.C55152_G1_I1
JrFBRO4.C7952_G1_I1
AtBBE15.PDB-4UD8
N.tabacum.NECTAR5

E. californica. PDB-3D2D

E. californica. PDB-3D2D
JrFBRO1.C54052_G1_I1
JrFBRO2.C53871_G1_I1
JrFBRO3.C55152_G1_I1
JrFBRO4.C7952_G1_I1
AtBBE15.PDB-4UD8
N.tabacum.NECTAR5

E. californica. PDB-3D2D

E. californica. PDB-3D2D
JrFBRO1.C54052_G1_I1
JrFBRO2.C53871_G1_I1
JrFBRO3.C55152_G1_I1
JrFBRO4.C7952_G1_I1
AtBBE15.PDB-4UD8
N.tabacum.NECTAR5

E. californica. PDB-3D2D

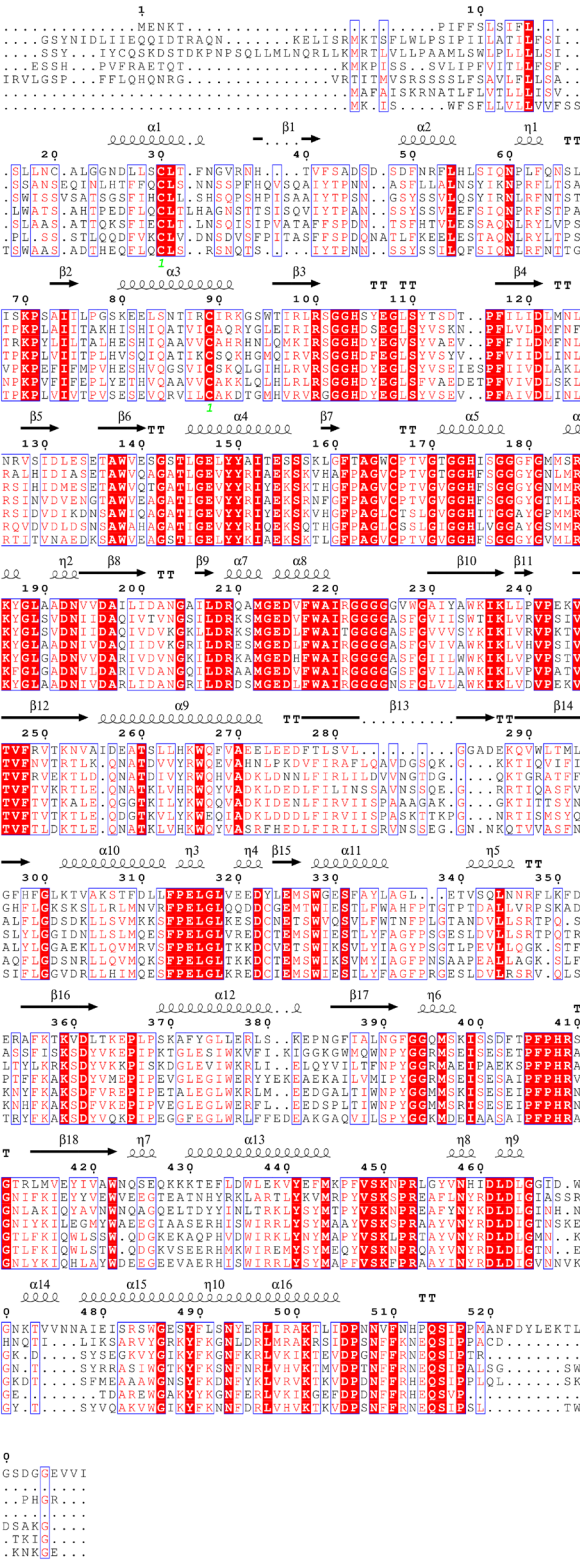
E. californica. PDB-3D2D
JrFBRO1.C54052_G1_I1
JrFBRO2.C53871_G1_I1
JrFBRO3.C55152_G1_I1
JrFBRO4.C7952_G1_I1
AtBBE15.PDB-4UD8
N.tabacum.NECTAR5

E. californica. PDB-3D2D

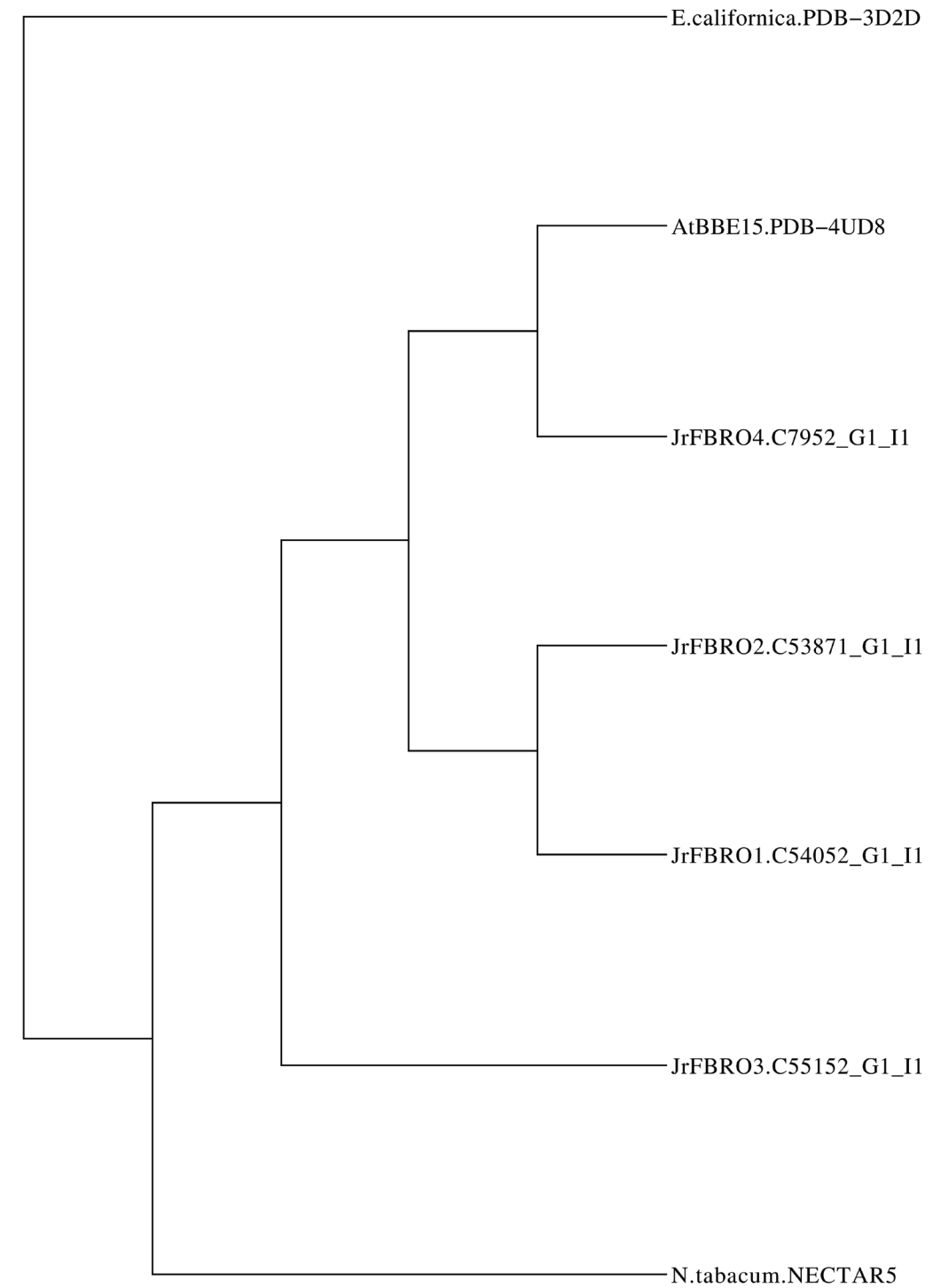
E. californica. PDB-3D2D
JrFBRO1.C54052_G1_I1
JrFBRO2.C53871_G1_I1
JrFBRO3.C55152_G1_I1
JrFBRO4.C7952_G1_I1
AtBBE15.PDB-4UD8
N.tabacum.NECTAR5

E. californica. PDB-3D2D

E. californica. PDB-3D2D
JrFBRO1.C54052_G1_I1
JrFBRO2.C53871_G1_I1
JrFBRO3.C55152_G1_I1
JrFBRO4.C7952_G1_I1
AtBBE15.PDB-4UD8
N.tabacum.NECTAR5



(a)



(b)

Figure 3. Multiple sequence alignment of BBE from walnut and other organisms. (a) The JrBBE sequences were aligned to berberine bridge enzyme (BBE) genes from *Eschscholzia californica* (EcbBE; California poppy), *Arabidopsis thaliana* (AtBBE15) and *Nicotiana tabacum* (Nectarin V). Secondary structure information from the structure PDBid:3D2D (*E. californica*) was used to annotate the sequences. The signal peptides are different in these proteins, suggesting different localization of these proteins in walnut. (b) Phylogenetic tree generated from the multiple sequence alignment.

Table 4. Selected genes in chickpea that are not annotated in the NCBI database. Most of the NCBI genes were predicted using Gnomon. YeATSAM used the publicly available transcriptome from chickpea to identify these genes. The corresponding genes from the TAIR database are shown. Several transcripts (like TC20962) encode multiple genes, while others (like TC01181) have only one significant ORF. TRid, transcript id; TAIRid: *Arabidopsis thaliana* id.

TRid	TAIRid	Description	Evalue
TC20962 A	ATMG00070.1	NAD9 NADH dehydrogenase subunit 9 chrM:23663-24235	3e-116
TC20962 B	AT2G07687.1	Cytochrome c oxidase, subunit III chr2:3311854-3312651	3e-107
TC20962 C	AT2G07674.1	Unknown conserved protein chr2:3269151-3269906	6e-41
TC01181	ATMG01360.1	COX1 cytochrome oxidase chrM:349830-351413	0.0
TC11063	AT3G30841.1	Cofactor-independent phosphoglycerate mutase chr3:12591595-12593401	0.0
TC06038	ATMG00090.1	Structural constituent of ribosome;protein binding chrM:25482-28733	3e-124
TC13206	AT3G13440.1	S-adenosyl-L-methionine-dependent methyltransferases superfamily	1e-118
TC07586	AT2G07725.1	Ribosomal L5P family protein chr2:3448402-3448959	2e-113
TC19047	ATMG00570.1	Sec-independent periplasmic protein translocase	8e-107
TC00902 B	ATMG00640.1	Hydrogen ion transporting ATP synthases, rotational	3e-104
TC15163	AT4G28360.1	Ribosomal protein L22p/L17e family protein chr4:14029294-14030926	1e-100
TC13677	AT5G05210.1	Surfeit locus protein 6 chr5:1548198-1549534	9e-91
TC13780 A	AT2G07707.1	Plant mitochondrial ATPase, F0 complex, subunit 8 protein	2e-90
TC18786	AT1G73440.1	Calmodulin-related chr1:27611418-27612182	5e-45

Software availability

Latest source code: <https://github.com/sanchak/YeATSAM>

Archived source code at time of publication: DOI: [10.5281/zenodo.165992](https://doi.org/10.5281/zenodo.165992) (Sanchak, 2016)

License: GNU General Public License

Competing interests

No competing interests were disclosed.

Grant information

AMD wishes to acknowledge grant support from the California Walnut Board.

The funders had no role in study design, data collection and analysis, decision to publish, or preparation of the manuscript.

Author contributions

AMD and SC were involved in the study design. SC developed the software and designed pipeline that enabled the annotations, PJM-G was involved in the validation with the walnut genome sequence. SC wrote the first draft and the rest of the authors were involved in subsequent editing and modifications.

Acknowledgements

The authors wish to thank the California Walnut Board for their generous support. We appreciate the efforts of Mary Lou Mendum in editing this manuscript.

Supplementary material

Supplementary Table 1. FAD-binding (Berberine family) reticuline oxidases in *Arabidopsis*. These proteins are involved in the benzophenanthridine alkaloid biosynthesis in plants. Benzophenanthridine is an anti-microbial metabolite. There are 27 loci in chromosomes 1,2,4 and 5, with one splice variant (AT4G20830) marked with an asterisk.

[Click here to access the data.](#)

References

- Ali A, Moushib LI, Lenman M, *et al.*: Paranoid potato: phytophthora-resistant genotype shows constitutively activated defense. *Plant Signal Behav.* 2012; 7(3): 400–408.
[PubMed Abstract](#) | [Publisher Full Text](#) | [Free Full Text](#)
- Attila C, Ueda A, Cirillo SL, *et al.*: *Pseudomonas aeruginosa* PAO1 virulence factors and poplar tree response in the rhizosphere. *Microb Biotechnol.* 2008; 1(1): 17–29.
[PubMed Abstract](#) | [Publisher Full Text](#) | [Free Full Text](#)
- Camacho C, Madden T, Ma N, *et al.*: BLAST Command Line Applications User Manual. 2013.
[Reference Source](#)
- Campbell MS, Law M, Holt C, *et al.*: Maker-P: a tool kit for the rapid creation, management, and quality control of plant genome annotations. *Plant Physiol.* 2014; 164(3): 513–524.
[PubMed Abstract](#) | [Publisher Full Text](#) | [Free Full Text](#)
- Carter CJ, Thornburg RW: Tobacco nectarin V is a flavin-containing berberine bridge enzyme-like protein with glucose oxidase activity. *Plant Physiol.* 2004; 134(1): 460–469.
[PubMed Abstract](#) | [Publisher Full Text](#) | [Free Full Text](#)
- Chakraborty S, Britton M, Martínez-García PJ, *et al.*: Deep RNA-seq profile reveals biodiversity, plant-microbe interactions and a large family of NBS-LRR resistance genes in walnut (*Juglans regia*) tissues. *AMB Express.* 2016a; 6(1): 12.
[PubMed Abstract](#) | [Publisher Full Text](#) | [Free Full Text](#)
- Chakraborty S, Britton MT, Wegrzyn JL, *et al.*: YeATS - a tool suite for analyzing RNA-seq derived transcriptome identifies a highly transcribed putative extensin in heartwood/sapwood transition zone in black walnut [version 2; referees: 3 approved]. *F1000Res.* 2015; 4: 155.
[PubMed Abstract](#) | [Publisher Full Text](#) | [Free Full Text](#)
- Chakraborty S, Nascimento R, Zaini PA, *et al.*: Sequence/structural analysis of xylem proteome emphasizes pathogenesis-related proteins, chitinases and β -1, 3-glucanases as key players in grapevine defense against *Xylella fastidiosa*. *PeerJ.* 2016b; 4: e2007.
[PubMed Abstract](#) | [Publisher Full Text](#) | [Free Full Text](#)
- Chang Z, Li G, Liu J, *et al.*: Bridger: a new framework for de novo transcriptome assembly using RNA-seq data. *Genome Biol.* 2015; 16: 30.
[PubMed Abstract](#) | [Publisher Full Text](#) | [Free Full Text](#)
- Cheney RH: Therapeutic potential of *Eschscholtzia californica* herb. *Q J Crude Drug Res.* 1963; 3(3): 413–416.
[PubMed Abstract](#) | [Publisher Full Text](#)
- Chu HT, Hsiao WW, Chen JC, *et al.*: EBARDenovo: highly accurate de novo assembly of RNA-seq with efficient chimera-detection. *Bioinformatics.* 2013; 29(8): 1004–1010.
[PubMed Abstract](#) | [Publisher Full Text](#)
- Custers JH, Harrison SJ, Sela-Buurlage MB, *et al.*: Isolation and characterisation of a class of carbohydrate oxidases from higher plants, with a role in active defence. *Plant J.* 2004; 39(2): 147–160.
[PubMed Abstract](#) | [Publisher Full Text](#)
- Daniel B, Pavkov-Keller T, Steiner B, *et al.*: Oxidation of monolignols by members of the berberine bridge enzyme family suggests a role in plant cell wall metabolism. *J Biol Chem.* 2015; 290(30): 18770–18781.
[PubMed Abstract](#) | [Publisher Full Text](#) | [Free Full Text](#)
- Flintoft L: Transcriptomics: digging deep with RNA-seq. *Nat Rev Genet.* 2008; 9: 568.
[PubMed Abstract](#) | [Publisher Full Text](#)
- Fu L, Niu B, Zhu Z, *et al.*: CD-HIT: accelerated for clustering the next-generation sequencing data. *Bioinformatics.* 2012; 28(23): 3150–3152.
[PubMed Abstract](#) | [Publisher Full Text](#) | [Free Full Text](#)
- Garg R, Patel RK, Tyagi AK, *et al.*: De novo assembly of chickpea transcriptome using short reads for gene discovery and marker identification. *DNA Res.* 2011; 18(1): 53–63.
[PubMed Abstract](#) | [Publisher Full Text](#) | [Free Full Text](#)
- González-Candelas L, Alamar S, Sánchez-Torres P, *et al.*: A transcriptomic approach highlights induction of secondary metabolism in citrus fruit in response to *Penicillium digitatum* infection. *BMC Plant Biol.* 2010; 10: 194.
[PubMed Abstract](#) | [Publisher Full Text](#) | [Free Full Text](#)
- Grabherr MG, Haas BJ, Yassour M, *et al.*: Full-length transcriptome assembly from RNA-seq data without a reference genome. *Nat Biotechnol.* 2011; 29(7): 644–652.
[PubMed Abstract](#) | [Publisher Full Text](#) | [Free Full Text](#)
- Guindon S, Lethiec F, Duroux P, *et al.*: PHYML Online—a web server for fast maximum likelihood-based phylogenetic inference. *Nucleic Acids Res.* 2005; 33(Web Server issue): W557–559.
[PubMed Abstract](#) | [Publisher Full Text](#) | [Free Full Text](#)
- Holt C, Yandell M: Maker2: an annotation pipeline and genome-database management tool for second-generation genome projects. *BMC Bioinformatics.* 2011; 12: 491.
[PubMed Abstract](#) | [Publisher Full Text](#) | [Free Full Text](#)
- Irshad M, Canut H, Borderies G, *et al.*: A new picture of cell wall protein dynamics in elongating cells of *Arabidopsis thaliana*: Confirmed actors and newcomers. *BMC Plant Biol.* 2008; 8: 94.
[PubMed Abstract](#) | [Publisher Full Text](#) | [Free Full Text](#)
- Joshi N, Fass J: Sickle: A sliding-window, adaptive, quality-based trimming tool for fastq files. (version 1.33) [software]; 2011.
[Reference Source](#)
- Jukanti AK, Gaur PM, Gowda CL, *et al.*: Nutritional quality and health benefits of chickpea (*Cicer arietinum* L.): a review. *Br J Nutr.* 2012; 108(Suppl 1): S11–S26.
[PubMed Abstract](#) | [Publisher Full Text](#)
- Kajikawa M, Shoji T, Kato A, *et al.*: Vacuole-localized berberine bridge enzyme-like proteins are required for a late step of nicotine biosynthesis in tobacco. *Plant Physiol.* 2011; 155(4): 2010–2022.
[PubMed Abstract](#) | [Publisher Full Text](#) | [Free Full Text](#)
- Kersey PJ, Allen JE, Armean I, *et al.*: Ensembl genomes 2016: more genomes, more complexity. *Nucleic Acids Res.* 2016; 44(D1): D574–D580.
[PubMed Abstract](#) | [Publisher Full Text](#) | [Free Full Text](#)
- Kinoshita A, Nakamura Y, Sasaki E, *et al.*: Gain-of-function phenotypes of chemically synthetic CLAVATA3/ESR-related (CLE) peptides in *Arabidopsis thaliana* and *Oryza sativa*. *Plant Cell Physiol.* 2007; 48(12): 1821–1825.
[PubMed Abstract](#) | [Publisher Full Text](#)
- Kong W, Wei J, Abidi P, *et al.*: Berberine is a novel cholesterol-lowering drug working through a unique mechanism distinct from statins. *Nat Med.* 2004; 10(12): 1344–1351.
[PubMed Abstract](#) | [Publisher Full Text](#)
- Kutchan TM, Dittich H: Characterization and mechanism of the berberine bridge enzyme, a covalently flavinylated oxidase of benzophenanthridine alkaloid biosynthesis in plants. *J Biol Chem.* 1995; 270(41): 24475–24481.
[PubMed Abstract](#) | [Publisher Full Text](#)
- Larkin MA, Blackshields G, Brown NP, *et al.*: Clustal W and Clustal X version 2.0. *Bioinformatics.* 2007; 23(21): 2947–2948.
[PubMed Abstract](#) | [Publisher Full Text](#)
- Law M, Childs KL, Campbell MS, *et al.*: Automated update, revision, and quality control of the maize genome annotations using MAKER-P improves the B73 refgen_v3 gene models and identifies new genes. *Plant Physiol.* 2015; 167(1): 25–39.
[PubMed Abstract](#) | [Publisher Full Text](#) | [Free Full Text](#)
- Lee YS, Kim WS, Kim KH, *et al.*: Berberine, a natural plant product, activates AMP-activated protein kinase with beneficial metabolic effects in diabetic and insulin-resistant states. *Diabetes.* 2006; 55(8): 2256–2264.
[PubMed Abstract](#) | [Publisher Full Text](#)
- Ligat L, Lauber E, Albenne C, *et al.*: Analysis of the xylem sap proteome of *Brassica oleracea* reveals a high content in secreted proteins. *Proteomics.* 2011; 11(9): 1798–1813.
[PubMed Abstract](#) | [Publisher Full Text](#)
- Lohse M, Bolger MA, Nagel A, *et al.*: RobiNA: a user-friendly, integrated software solution for RNA-Seq-based transcriptomics. *Nucleic Acids Res.* 2012; 40(Web Server issue): W622–W627.
[PubMed Abstract](#) | [Publisher Full Text](#) | [Free Full Text](#)
- Martínez-García PJ, Crepeau MW, Puij D, *et al.*: The walnut (*Juglans regia*) genome sequence reveals diversity in genes coding for the biosynthesis of non-structural polyphenols. *Plant J.* 2016; 87(5): 507–32.
[PubMed Abstract](#) | [Publisher Full Text](#)
- Mbandi SK, Hesse U, van Heusden P, *et al.*: Inferring bona fide transfrags in RNA-Seq derived-transcriptome assemblies of non-model organisms. *BMC Bioinformatics.* 2015; 16(1): 58.
[PubMed Abstract](#) | [Publisher Full Text](#) | [Free Full Text](#)
- Neale DB, Wegrzyn JL, Stevens KA, *et al.*: Decoding the massive genome of loblolly pine using haploid DNA and novel assembly strategies. *Genome Biol.* 2014; 15(3): R59.
[PubMed Abstract](#) | [Publisher Full Text](#) | [Free Full Text](#)
- Nelson N, Yocum CF: Structure and function of photosystems I and II. *Annu Rev Plant Biol.* 2006; 57: 521–565.
[PubMed Abstract](#) | [Publisher Full Text](#)
- Oldham JT, Hincapie M, Rejtar T, *et al.*: Shotgun proteomic analysis of yeast-elicited California poppy (*Eschscholzia californica*) suspension cultures producing enhanced levels of benzophenanthridine alkaloids. *J Proteome Res.* 2010; 9(9): 4337–4345.
[PubMed Abstract](#) | [Publisher Full Text](#)
- Pagnussat GC, Yu HJ, Ngo OA, *et al.*: Genetic and molecular identification of genes required for female gametophyte development and function in *Arabidopsis*. *Development.* 2005; 132(3): 603–614.
[PubMed Abstract](#) | [Publisher Full Text](#)
- Rice P, Longden I, Bleasby A: EMBOSS: the European Molecular Biology Open Software Suite. *Trends Genet.* 2000; 16(6): 276–277.
[PubMed Abstract](#) | [Publisher Full Text](#)
- Robert X, Gouet P: Deciphering key features in protein structures with the new endsript server. *Nucleic Acids Res.* 2014; 42(Web Server issue): W320–W324.
[PubMed Abstract](#) | [Publisher Full Text](#) | [Free Full Text](#)
- Sanchak: sanchak/YeATSAM 1 [Data set]. *Zenodo.* 2016.
[Data Source](#)

Schulz MH, Zerbino DR, Vingron M, *et al.*: **Oases: robust *de novo* RNA-seq assembly across the dynamic range of expression levels.** *Bioinformatics*. 2012; **28**(8): 1086–1092.

[PubMed Abstract](#) | [Publisher Full Text](#) | [Free Full Text](#)

Shin LJ, Lo JC, Yeh KC: **Copper chaperone antioxidant protein1 is essential for copper homeostasis.** *Plant Physiol*. 2012; **159**(3): 1099–1110.

[PubMed Abstract](#) | [Publisher Full Text](#) | [Free Full Text](#)

Simpson JT, Wong K, Jackman SD, *et al.*: **Abys: a parallel assembler for short read sequence data.** *Genome Res*. 2009; **19**(6): 1117–1123.

[PubMed Abstract](#) | [Publisher Full Text](#) | [Free Full Text](#)

Souvorov A, Kapustin Y, Kiryutin B, *et al.*: **Gnomon-NCBI eukaryotic gene prediction tool.** *NCBI*. 2010; 1–24.

[Reference Source](#)

Sprunck S, Rademacher S, Vogler F, *et al.*: **Egg cell-secreted ec1 triggers sperm cell activation during double fertilization.** *Science*. 2012; **338**(6110): 1093–1097.

[PubMed Abstract](#) | [Publisher Full Text](#)

Trapnell C, Pachter L, Salzberg SL: **TopHat: discovering splice junctions with RNA-seq.** *Bioinformatics*. 2009; **25**(9): 1105–1111.

[PubMed Abstract](#) | [Publisher Full Text](#) | [Free Full Text](#)

Trapnell C, Roberts A, Goff L, *et al.*: **Differential gene and transcript expression analysis of RNA-seq experiments with TopHat and cufflinks.** *Nat Protoc*. 2012; **7**(3): 562–578.

[PubMed Abstract](#) | [Publisher Full Text](#) | [Free Full Text](#)

Wang L, Feng Z, Wang X, *et al.*: **DEGseq: an R package for identifying**

differentially expressed genes from RNA-seq data. *Bioinformatics*. 2010; **26**(1): 136–138.

[PubMed Abstract](#) | [Publisher Full Text](#)

Wang Z, Gerstein M, Snyder M: **RNA-seq: a revolutionary tool for transcriptomics.** *Nat Rev Genet*. 2009; **10**(1): 57–63.

[PubMed Abstract](#) | [Publisher Full Text](#) | [Free Full Text](#)

Wilkins TA, Smart LB: **Isolation of RNA from plant tissue.** Ed. Paul A. Kriedg, *A laboratory guide to RNA: Isolation, Analysis, and Synthesis*. 1996; 21–42.

[Reference Source](#)

Winkler A, Hartner F, Kutchan TM, *et al.*: **Biochemical evidence that berberine bridge enzyme belongs to a novel family of flavoproteins containing a bi-covalently attached fad cofactor.** *J Biol Chem*. 2006; **281**(30): 21276–21285.

[PubMed Abstract](#) | [Publisher Full Text](#)

Winkler A, Lyskowski A, Riedl S, *et al.*: **A concerted mechanism for berberine bridge enzyme.** *Nat Chem Biol*. 2008; **4**(12): 739–741.

[PubMed Abstract](#) | [Publisher Full Text](#)

Yandell M, Ence D: **A beginner's guide to eukaryotic genome annotation.** *Nat Rev Genet*. 2012; **13**(5): 329–342.

[PubMed Abstract](#) | [Publisher Full Text](#)

Yu J, Xue JH, Zhou SL: **New universal *matK* primers for DNA barcoding angiosperms.** *J Syst Evol*. 2011; **49**(3): 176–181.

[Publisher Full Text](#)

Zerbino DR, Birney E: **Velvet: algorithms for *de novo* short read assembly using de Bruijn graphs.** *Genome Res*. 2008; **18**(5): 821–829.

[PubMed Abstract](#) | [Publisher Full Text](#) | [Free Full Text](#)

Open Peer Review

Current Referee Status:



Version 1

Referee Report 28 December 2016

doi:10.5256/f1000research.10816.r18792



Nic Herndon

Department of Ecology and Evolutionary Biology, Plant Computational Genomics Lab, University of Connecticut, Storrs, CT, USA

The article presents an annotation method, YeATSAM, that leverages the information contained in RNA-Seq derived transcriptomes. The method was compared with two other annotation methods using two organisms: MAKER-P (a RNA evidence based and *ab initio* hybrid method) with walnut, and NCBI Gnomon (a homology based and *ab initio* hybrid method) with chickpea. Although YeATSAM and MAKER-P identified same genes, there were also genes that were identified by only one of them (about 4,000 by YeATSAM and about 700 by MAKER-P), as well as genes that both methods failed to identify. Similarly, YeATSAM identified about 1,000 genes that Gnomon failed to identify.

The article is well written, the analysis is technically sound, the tables and figures present the results well, and the conclusions are supported by the data. Nonetheless, I would suggest the following changes:

- Address discrepancies in the numbers reported, e.g., 20 tissues (in abstract, introduction, results, and future work) v. 19 tissues (in methods: 15 samples + four additional samples); 700 (in results) v. ~700 (in future work, and conclusions); ~1,500 chickpea proteins (in results) v. ~1,000 (in conclusions). Instead of approximate values report actual values.
- As the tool is designed to be used with other organisms (besides walnut and chickpea), make the method and workflow (Figure 1) independent of any organism (e.g., the input to YeATSAM is the genome sequence rather than the walnut genome).
- Figure 3 (b) can be resized without losing its readability.

I have read this submission. I believe that I have an appropriate level of expertise to confirm that it is of an acceptable scientific standard.

Competing Interests: No competing interests were disclosed.

Referee Report 06 December 2016

doi:10.5256/f1000research.10816.r17771



Margaret E. Staton, Miriam Payá Milans

Department of Entomology and Plant Pathology, University of Tennessee, Knoxville, TN, USA

This work focuses on a current major challenge in improving genome and transcriptome automated annotation. It also deals with difficulties derived from imperfect de novo assemblies, such as transcripts representing fused and split genes. The increasing affordability to generate sequencing data enhances the demand for more powerful annotation predicting tools and pipelines, although exact annotations will still remain for wet-lab experimentation. This paper compares the YeATSAM tool to previously annotated genomes, in which existing de novo assemblies are used as generated and analyzed with blast, interproscan or similar tools for homology-based annotation. Even though the paper indicates novelty of the method, there are critical points that need modification.

The method reported here - YeATSAM - is not clearly different from the work already reported in a previous paper¹. This method reported here (identify 3 longest ORFs, then blast to known proteins, then merge or split if needed) looks identical to previously published in F1000 Research¹ - for instance, Figure 1 in the previously published paper is an almost identical replica of the Figure 1 in this paper. The current work does appropriately cite this previous paper. However, if there is a novel algorithm to describe here, it needs to be clearly delineated from this previous work. Otherwise, it should just be cited.

This previous publication also compares the annotation of the walnut genome by YeATS and Maker-P. The previous paper and this paper both profile walnut transcripts where ORFs were merged and transcripts that match multiple proteins; this paper does use different transcripts to demonstrate the methodology and results. To emphasize the novelty of the present paper, the authors should clarify exactly what this paper offers in addition to the previous paper. In this regard, the paper does go a bit further than the previous one by detailing genes that were unannotated by MAKER-P but found via this method; those genes were not reported previously. If the algorithm has not changed from the previous work, a new focus for this paper is needed, possibly reporting these novel genes such as the BBEs.

The addition of the chickpea genome annotation is barely described - a single short results paragraph. The author also has an existing F1000 research article describing the use of YeATS on chickpea transcripts and describing the detection of missed genes and describing multiple ORFs mapping to different proteins and fragmented ORFs of the same protein². How does this report differ from that one? That one is not cited in this report

Data reproducibility and accessibility - the new annotations are not made available for either walnut or chickpea (unless they are the same as the ones provided already in Chakraborty et al. 2015¹). It would be very difficult to replicate this experiment. No parameters or commands are provided to determine how PHYML, ClustalW or ENDscript server were utilized. I confirmed that YeATSAM.zip (listed as YeATSAM.tgz in manuscript) with README is available for download and the links to data are functional. I was unable to install YeATSAM; the installation and usage instructions are very vague.

Specifics:

The joined results of MAKER-P and YeATSAM look promising for improving genome annotations. However, a figure or table describing the total number of genes predicted by each software and the overlap would be very helpful to visualize the results. The report commonly has words like "several" or "many" and the usage of "~" in front of numbers. Numbers should be reported exactly where they are important to the method and results. Examples:

- "A BLAST database of protein peptides (plantpep.fasta: 1M sequences) using ~30 organisms (list.plants)" - also list.plants does not link to anything.

- “About 3% of transcripts have ORFs that map to different proteins”
- “MAKER-P and YeATSAM each failed to annotate several proteins identified by the other (MAKER-P= \sim 4000; YeATSAM=700)”
- “Among the \sim 700 genes not detected by YeATSAM, there are \sim 500 genes with no matches in the complete ‘nr’ database. Of these, \sim 300 have no transcripts (SetA), while the remaining \sim 200 have matches among the transcripts (SetB).”

Based on the content of the manuscript, the introduction focuses adequately on the explanation of the problematic of annotating newly assembled genomes and transcriptomes. However, a deeper introduction to the software utilized may be relevant for a better understanding of their choice and also of their basic mechanics. In relation to the results commented on the introduction, the relevance of some of the selected genes is not clear. Specifically, the relevance of the three “critical” proteins not detected by YeATSAM, which are not transcribed and are thus considered pseudogenes, is confusing.

In relation to the generation of de novo assemblies, the authors are suggested to provide detail on how the assemblies were combined, considering that the simple addition of libraries would lead to high redundancy. For the walnut genome, were the MAKER-P and YeATSAM packages using the same set of RNASeq reads? This would be an important point to emphasize - a true comparison of the two methods would preferably use the same starting point. The original walnut paper reports using 19 libraries (Martinez-Garcia et al. 2016); this paper reports 20 libraries.

In the results and discussion section, the manipulation of ORFs is an interesting concept, although the difference to the described methodology in Chakraborty et al. 2015¹ is not clear. The use of the term ORF is confusing here since it appears that the merged sequences are the encoded peptides, while ORFs are nucleotide sequences. Moreover, it seems likely the ORFs from the same gene might match different proteins because they are being compared to 30 different organisms. The ORFs could match to the orthologs of the gene in question from different organisms. (i.e. they have different matches to database entries, both orthologs, but they are legitimately from the same gene). In this case, merging is the best avenue, but the software would actually split the transcript apart. Was this seen in some transcripts? Also, when referring to significance with similar proteins, values should be provided.

The authors mention that many genes unannotated by MAKER-P have repetitive stretches. What types of repetitive stretches? There is no methodology given for this analysis? This needs to be described/explained. In regards to the sentence “Although most of these unannotated proteins have repetitive sequences (transposable elements)” - does that mean the unannotated proteins originate from within transposable elements, or transposable elements have inserted into the gene itself?

The authors do not address the overall differences in proteins detected by each annotation program - is a pattern that may explain these? Pseudogenes are mentioned twice, but this idea is not fully explained. While 20 tissues will capture many genes, it is probably not exhaustive – is there any additional evidence these “genes” are actually pseudogenes such as premature stop codons or frameshift mutations?

Minor:

This sentence needs improved clarity:

“The BLAST results of list.transcriptome.clean.ORFS: 320K on ‘plantpep.fasta’ was processed using a cutoff: bitscore=60, Evalue= \sim 1E-10”

Heading “Transcripts with multiple ORFs” - the section above also deals with transcripts with multiple ORFs. This heading could be clarified.

Some revision on the writing would improve readability. Abbreviations are recommended to be properly specified at first use in the manuscript and always in figures. Also, numbers and units should be spaced. In relation to the language, the authors are advised to review the use of scientific English, as well as verb tense consistency.

In Table 1, the main line indicates proteins not annotated by either program while the last line indicates listing of genes predicted by MAKER-P. These two sentences in the same caption lead to confusion. In addition, sizing and description of other figures might be improved.

References

1. Chakraborty S, Britton M, Wegrzyn J, Butterfield T, Martínez-García PJ, Reagan RL, Rao BJ, Leslie CA, Aradhaya M, Neale D, Woeste K, Dandekar AM: YeATS - a tool suite for analyzing RNA-seq derived transcriptome identifies a highly transcribed putative extensin in heartwood/sapwood transition zone in black walnut. *F1000Res.* 2015; **4**: 155 [PubMed Abstract](#) | [Publisher Full Text](#)
2. Chakraborty S: RNA-seq assembler artifacts can bias expression counts and differential expression analysis - case study on the chickpea transcriptome emphasizes importance of freely accessible data for reproducibility. *F1000Research.* 2016; **5**. [Publisher Full Text](#)

We have read this submission. We believe that we have an appropriate level of expertise to state that we do not consider it to be of an acceptable scientific standard, for reasons outlined above.

Competing Interests: No competing interests were disclosed.

Referee Report 30 November 2016

doi:[10.5256/f1000research.10816.r17772](https://doi.org/10.5256/f1000research.10816.r17772)



Carmen Cuadrado¹, Africa Sanchiz²

¹ Department of Food Technology, SGIT - INIA (Deputy Directorate General of Research and Technology-National Institute for Agricultural and Food Research and Technology), Madrid, Spain

² Departamento de Tecnología de Alimentos, SGIT-INIA, Madrid, Spain

In this paper the authors investigate a new annotation method in the YeATS suite (YeATS Annotation Module - YeATSAM), which was used to annotate the newly-sequenced walnut genome using a simple workstation. In YeATSAM the assembled transcriptome is splitting into multiple ORFs. They show that YeATSAM failed to annotate ~700 genes identified by MAKER-P, while identifying ~4000 genes missed by MAKER-P. While most of these genes have repetitive stretches, both methods missed important genes identified by the other. Since many of the additional genes identified by MAKER-P have no known transcripts, the authors suggest that these were identified using ab initio methods. In the absence of such an ab initio module in YeATSAM, they propose a combined method using both MAKER-P and YeATSAM to annotate the WGS. This work is very interesting because the results probe the adequacy of this new annotation method. In general, the presentation is clear and the conclusions are adjusted to the results obtained. The figures and tables are also clear. Some comments are listed below:

- In the abstract, please change the order in “Results and Conclusions” part, from lines 17 to 21. Consider to mention first “YeATSAM used a [...] chickpea transcriptome assembled using Newbler v2.3” and then that “1000 genes were identified, which were not previously annotated by Gnomon annotation tool”.
- Fourth and fifth paragraphs of Introduction could be changed to the discussion and in the introduction leave some short sentences about this.
- En fifth line of Methods section correct “sequeunces”.
- Please consider to explain further section “future work”.

We have read this submission. We believe that we have an appropriate level of expertise to confirm that it is of an acceptable scientific standard.

Competing Interests: No competing interests were disclosed.
