

Lawrence Berkeley National Laboratory

LBL Publications

Title

Mummified baboons reveal the far reach of early Egyptian mariners

Permalink

<https://escholarship.org/uc/item/1d88m033>

Authors

Dominy, Nathaniel J

Ikram, Salima

Moritz, Gillian L

et al.

Publication Date

2020

DOI

10.7554/elife.60860

Peer reviewed

Mummified baboons reveal the far reach of early Egyptian mariners

Nathaniel J Dominy^{1*}, Salima Ikram², Gillian L Moritz^{1†}, Patrick V Wheatley³, John N Christensen³, Jonathan W Chipman⁴, Paul L Koch⁵

¹Departments of Anthropology and Biological Sciences, Dartmouth College, Hanover, United States; ²Department of Sociology, Egyptology, and Anthropology, American University in Cairo, New Cairo, Egypt; ³Center for Isotope Geochemistry, Lawrence Berkeley National Laboratory, Berkeley, United States; ⁴Department of Geography, Dartmouth College, Hanover, United States; ⁵Department of Earth and Planetary Sciences, University of California, Santa Cruz, Santa Cruz, United States

Abstract The Red Sea was witness to important events during human history, including the first long steps in a trade network (the spice route) that would drive maritime technology and shape geopolitical fortunes for thousands of years. Punt was a pivotal early node in the rise of this enterprise, serving as an important emporium for luxury goods, including sacred baboons (*Papio hamadryas*), but its location is disputed. Here, we use geospatial variation in the oxygen and strontium isotope ratios of 155 baboons from 77 locations to estimate the geoprovenance of mummified baboons recovered from ancient Egyptian temples and tombs. Five Ptolemaic specimens of *P. anubis* (404–40 BC) showed evidence of long-term residency in Egypt prior to mummification, consistent with a captive breeding program. Two New Kingdom specimens of *P. hamadryas* were sourced to a region that encompasses much of present-day Ethiopia, Eritrea, and Djibouti, and portions of Somalia and Yemen. This result is a testament to the tremendous reach of Egyptian seafaring during the 2nd millennium BC. It also corroborates the balance of scholarly conjecture on the location of Punt.

***For correspondence:**

nathaniel.j.dominy@dartmouth.edu

Present address: [†]Department of Physiology and Cell Biology, University of Nevada, Reno, United States

Competing interests: The authors declare that no competing interests exist.

Funding: See page 16

Received: 08 July 2020

Accepted: 09 November 2020

Published: 15 December 2020

Reviewing editor: Ammie K Kalan, Max Planck Institute for Evolutionary Anthropology, Germany

© This is an open-access article, free of all copyright, and may be freely reproduced, distributed, transmitted, modified, built upon, or otherwise used by anyone for any lawful purpose. The work is made available under the [Creative Commons CC0 public domain dedication](https://creativecommons.org/licenses/by/4.0/).

Introduction

The sacred baboon (*Papio hamadryas*) was a recurring motif in ancient Egyptian art and religion, from Predynastic statuettes to later mortuary traditions, including wall paintings, reliefs, amulets, and statues—a tradition exceeding 3000 years (**Figure 1**). In most cases, *P. hamadryas* was the embodiment of Thoth, a deity associated with the moon and wisdom. It is a rare example of apotheosis among nonhuman primates. The archetype of this manifestation—a male baboon in a seated posture, hands on knees, and often surmounted with a lunar disc or crescent—was strikingly consistent for millennia. Figurines of seated baboons even spread into the Levant and across the Mediterranean during the Middle Bronze Age, but the biological realism diminished with increasing distance from Egypt, becoming symbolic renderings rather than species-specific representations (**Dothan and Regev, 2011**). Such a pattern invites two complementary interpretations: first, that ancient Egyptian artists were concerned with species-level realism and second, that they were themselves witness to the plants and animals in their works. Accordingly, some ecologists have viewed the artistic record of Egypt as a biological survey and used it to assess ecosystem stability through time (**Yeakel et al., 2014**).

Yet, the Holocene fossil record of Egypt is devoid of any monkey species, let alone *P. hamadryas* (**Geraads, 1987**). Gaps in the fossil record are common, of course, and seldom conclusive on the question of regional absence, but the premise is reinforced by ecological modeling (**Chala et al., 2019**), which indicates little appreciable change to the distributions of baboons during the past

eLife digest Strontium is a chemical element that can act as a geographic fingerprint: its composition differs between locations, and as it enters the food chain, it can help to retrace the life history of extant or past animals. In particular, strontium in teeth – which stop to develop early – can reveal where an individual was born; strontium in bone and hair, on the other hand, can show where it lived just before death. Together, these analyses may hold the key to archaeological mysteries, such as the location of a long-lost kingdom revered by ancient Egyptians.

For hundreds of years, the Land of Punt was one of Egypt's strongest trading partners, and a place from which to import premium incense and prized monkeys. Travellers could reach Punt by venturing south and east of Egypt, suggesting that the kingdom occupied the southern Red Sea region. Yet its exact location is still highly debated.

To investigate, Dominy et al. examined the mummies of baboons present in ancient Egyptian tombs, and compared the strontium compositions of the bones, hair and teeth of these remains with the ones found in baboons living in various regions across Africa. This shed a light on the origins of the ancient baboons: while some were probably raised in captivity in Egypt, others were born in modern Ethiopia, Eritrea, Djibouti, Somalia and Yemen – areas already highlighted as potential locations for the Land of Punt.

The work by Dominy et al. helps to better understand the ancient trade routes that shaped geopolitical fortunes for millennia. It also highlights the need for further archaeological research in Eritrea and Somalia, two areas which are currently understudied.

20,000 years. Such evidence distinguishes *P. hamadryas* as the only animal member of the Egyptian pantheon that is naturally absent from Egypt today and during antiquity. Setting aside the puzzling question of why ancient Egyptians deified *P. hamadryas* (Thomas, 1979), the level of reverence was sufficient to justify the importation, husbandry, and mummification of it and another species, *P. anubis*, the olive baboon. (See **Box 1** on the biogeography of *Papio*).

The distributions of *P. anubis* and *P. hamadryas* differ, a fact that bears on the trade networks that supplied living baboons to Egypt (Figure 2). Assuming little change to these distributions over the past 5000 years (Chala et al., 2019), then *P. anubis* was readily available via overland trade, whereas *P. hamadryas* was more practically obtained via maritime trade—indeed, the distinction is apparent on temple walls, insofar as *P. hamadryas* is the only baboon associated with long-distance seafaring (Figure 1c). The problem that motivates us lies with the contested nautical range of Egyptian ships (Wicker, 1998), and the untapped potential of baboons to reveal the geography of early maritime trade in relation to Punt, a fabled emporium. Our goal is to use isotopic mapping to determine the geoprovenance of mummified baboons recovered from New Kingdom temples and Ptolemaic catacombs; but first, a brief chronology is necessary to introduce the specimens, as the cultural context and availability of each species varied through time (Figure 2).

Predynastic specimens

Skeletal remains of *P. anubis* (n = 16) are present at the cemetery site HK6, Hierakonpolis (3750–3550 BC) (Van Neer et al., 2017). The assemblage contains adults and juveniles of both sexes, buried singly and in groups. A juvenile baboon (age: 4–5 years) was interred with an adolescent person (age: 10–15 years), suggesting status as a pet (Van Neer et al., 2004). The prevalence of skeletal pathologies points to physical abuse under captive conditions (Van Neer et al., 2017). The absence of *P. anubis* at every other Egyptian site of this time period, both archaeological and non-archaeological, together with the presence of two elephants at HK6, is interpreted as evidence of overland animal trade with peoples farther south in present-day Sudan (Van Neer et al., 2004).

New Kingdom specimens

In 1837, the British Museum purchased two mummified baboons from the estate of Henry Salt, British Consul-General in Egypt from 1816 to 1827. The given provenance of each specimen—Temple of Khons (EA6736; Figure 3a) and Thebes (EA6738; Figure 3c)—is itself sufficient to impute a (late) New Kingdom origin, an inference bolstered by two lines of typological evidence illustrated in



Figure 1. Egyptian iconography of *Papio hamadryas*, a tradition exceeding 3000 years. (a) Statuette inscribed with the name of King Narmer, Early Dynastic Period, 1st Dynasty, ca. 3150–3100 BC (no. ÄM 22607, reproduced with permission from the Ägyptisches Museum und Papyrussammlung, 2020, under the terms of a [CC0 1.0 license](https://creativecommons.org/licenses/by/4.0/)). (b) Bronze axe head, Middle Kingdom, 12th or 13th Dynasty, ca. 1981–1640 BC (no. 30.8.111, reproduced with permission from The Metropolitan Museum of Art, 2020, under the terms of a [CC0 1.0 license](https://creativecommons.org/licenses/by/4.0/)). (c) Reliefs at the mortuary temple of Queen Hatshepsut [Deir el-Bahari]. A hamadryas baboon sits in the rigging of a ship. It is one of five being imported from Punt; New Kingdom, 18th Dynasty, ca. 1473–1458 BC. (d) Wall painting in the mortuary chapel of Rekhmire (TT 100), Vizier to Tutmoses III and Amenhotep II. A baboon (*P. hamadryas*) is shown as tribute in a procession from Nubia. Three vervets (*Chlorocebus aethiops*) are also illustrated, one of which climbs the neck of a beautifully rendered giraffe; New Kingdom, 18th Dynasty, ca. 1479–1425 BC. (e) Large 35-ton statue at Hermopolis Magna (author NJD shown for scale); erected by Amenhotep III, New Kingdom, 18th Dynasty, ca. 1370 BC. (f) Frieze of baboons on the east-facing facade of the rock-cut temple of Abu Simbel (g), New Kingdom, 18th Dynasty, ca. 1265 BC. The raised arms are interpreted as a posture of adoration toward the rising sun, whereas the open mouth may represent vocal behavior (te Velde, 1988). (h) Pectoral necklace of Tutankhamun; baboons are surmounted with lunar disks and simultaneously adoring the central solar disk, a rare combination of two stereotypical postures; New Kingdom, 18th Dynasty, ca. 1341–1323 BC (no. JE 61885, Museum of Egyptian Antiquities). (i) Faience figurine and exemplary representation of Thoth: a male *P. hamadryas* in a seated posture, hands on knees, and Figure 1 continued on next page

Figure 1 continued

surmounted by a lunar disc, Ptolemaic period, 332–30 BC (no. E 17496, Musée du Louvre).

© 2020, Rama, Creative Commons Attribution-ShareAlike 3.0. **Figure 1I** is reproduced with permission from Rama, 2020, under the terms of the [Creative Commons Attribution-ShareAlike 3.0](#); this image is not distributed under the terms of the CC0 1.0 license, and further reproduction of this image panel should adhere to the terms of the CC-BY-SA 3.0 license.

© 2019, Sandro Vannini. All rights reserved. **Figure 1D** is reproduced with permission from Sandro Vannini, 2019; this image is not distributed under the terms of the CC0 1.0 license, and further reproduction of this image panel would need permission from the copyright holder.

Figure 2. First, the species attribution is *P. hamadryas* (Anderson and de Winton, 1902), the subject of numerous New Kingdom wall paintings and reliefs, some of which depict the act of importation from distant polities (Appendix 1—figure 1). Second, the seated posture and right-curved tail of EA6736 resembles the state of five mummified *P. hamadryas* found in the Valley of the Kings in 1906 (Davis et al., 1908; Lortet and Gaillard, 1909). The baboon-bearing tombs (KV50, KV51, KV52) are attributed on the basis of proximity to Amenhotep II (ca. 1427–1401 BC) or King Horemheb (1319–1307 BC), both members of the 18th Dynasty (Ikram, 2005). A third line of evidence concerns ante-mortem canine extraction (Figure 3), an idiosyncrasy that unites EA6736 and EA6738 with other specimens from the New Kingdom period. (See Box 2 and Appendix 1—figure 2 on the New Kingdom practice of canine extraction).

Late and Ptolemaic specimens

Excavations in 1968 revealed a catacomb in the sacred animal necropolis of North Saqqara (Figure 2 and see Appendix 1—figure 3), containing the remains of olive baboons (*P. anubis*; n = 143), vervets (*Chlorocebus aethiops*; n = 2), and Barbary macaques (*Macaca sylvanus*; n = 21) (Goudsmit and Brandon-Jones, 1999). Inscriptions indicate use from ca. 404 to 40 BC (Davies, 2006). The sample of *P. anubis* includes every age class, a demographic pattern consistent with captive breeding; however, the 2:1 ratio of males to females indicates sex-biased internment (Goudsmit and Brandon-Jones, 1999). An outstanding feature of the site is the preservation of six obituaries written in demotic script. In one example, an animal named Harnufi (and later, Djeho-the-baboon, a sacred by-name) was imported into Egypt in year 6 of Ptolemy V (200/199 BC) and buried on 06 September 168 BC (Ray, 2011), a minimum captive span of 31 years. In other examples, we learn that animals were brought from Alexandria or the temple estate of Ptah-under-his-moringa-tree in Memphis, where they were born, housed, and mummified (Ray, 2011). Most of the baboons (82%) have cranio-dental or developmental anomalies associated with vitamin D deficiency and prolonged indoor confinement (Goudsmit and Brandon-Jones, 1999).

Mummified baboons are also known from the subterranean galleries of Tuna el-Gebel (Figure 2 and see Appendix 1—figure 3), dating from the reigns of Ptolemy I and II (303–246 BC) (von den Driesch, 1993b). The assemblage was described in 1989 (82 specimens of *P. anubis*, Kessler, 1989) and again in 2005 (>200 specimens, including one *P. hamadryas* [Kessler and Nur el-Din, 2005]). The total number of burials is estimated at ~2000 (Kessler and Nur el-Din, 2005). The initial data set contained a comparable number of adult males (n = 34) and females (n = 28), which hints at captive breeding, yet it was devoid of animals < 2 years of age. Severe bone deformations and chronic degenerative pathologies in 38 individuals suggest extended captivity under abject conditions (von den Driesch and Boessneck, 1985; von den Driesch, 1993a; Nerlich et al., 1993).

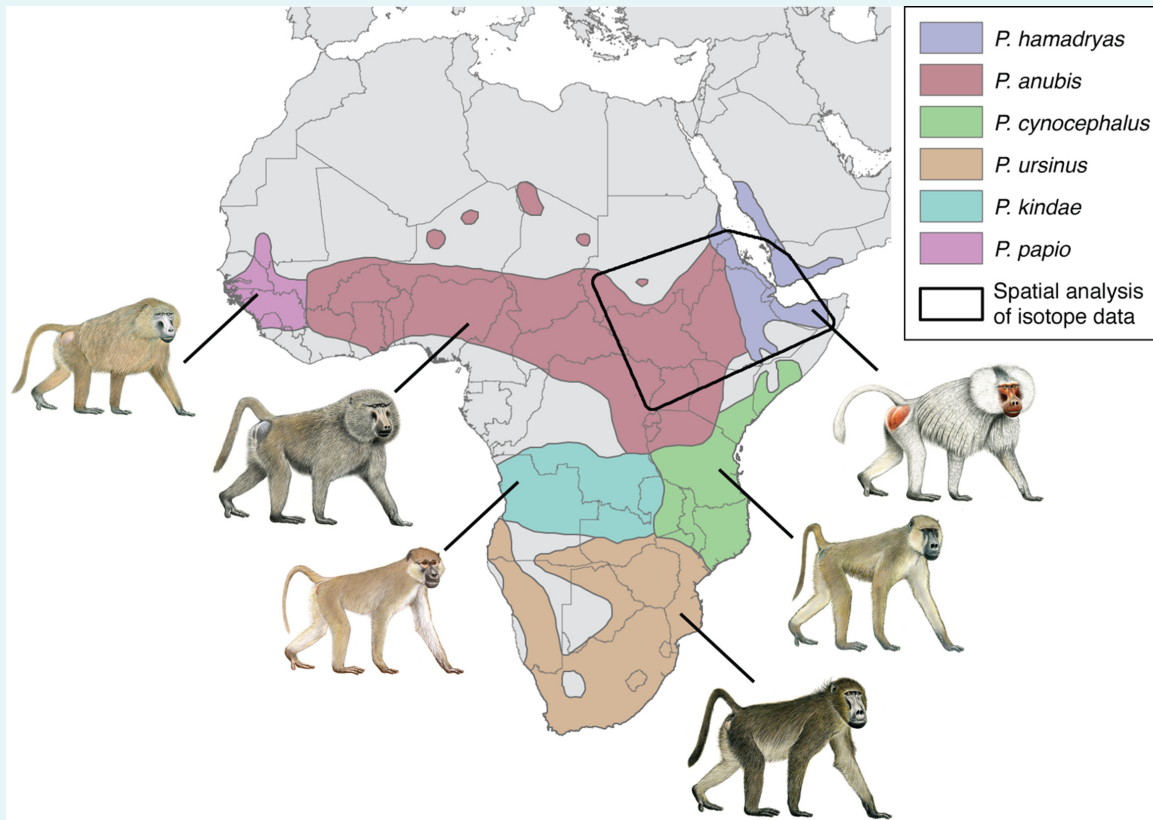
This treatment of *P. anubis* stands in stark contrast with the veneration directed toward *P. hamadryas*, as attested by massive statues at Hermopolis Magna, a temple 6 km east of Tuna el-Gebel (Figure 1e). The reasons for this distinction—the mummification of *P. anubis* vs. the iconography of *P. hamadryas*, both in the service of Thoth—are uncertain, but it was widespread during this time period.

Study design and aims

Isotopic mapping (isomapping) is used to project geospatial variation in the isotope ratios of a given element, together with isotope ratios in biological tissues such as hair, bones, and teeth. The method is useful for estimating the geographic origin and subsequent movement of mobile organisms. Here, our goal is to use oxygen and strontium isomapping to estimate the source of baboons

Box 1. Biogeography of baboons.

The taxonomy of baboons is a topic of enduring debate, with major types classified as either species or allopatric subspecies of the superspecies *Papio hamadryas* (Jolly, 1993). The distinction is essentially a matter of philosophy, and here we follow Zinner et al., 2013 by recognizing six phenotypically distinct allotaxa as species: the sacred or hamadryas baboon (*P. hamadryas*), the olive baboon (*P. anubis*), the yellow baboon (*P. cynocephalus*), the chacma baboon (*P. ursinus*), the Kinda baboon (*P. kindae*), and the Guinea baboon (*P. papio*). Still, these allomorphs interbreed freely in areas of sympatry, and molecular studies report widespread mitochondrial paraphyly within and between the northern and southern clades, suggesting a long history of introgressive hybridization.



Box 1—figure 1. Modern geographic distribution of baboons (*Papio*) in Africa and southwest Arabia.

The polygon illustrates our area of geospatial analysis, which encompasses regions inhabited by sacred baboons (*P. hamadryas*) and olive baboons (*P. anubis*).

© 2013, Stephen D. Nash. All rights reserved. The illustrations of baboons are reproduced with permission from Stephen D. Nash / IUCN SSC Primate Specialist Group, 2013; these images are not distributed under the terms of the CC0 1.0 license, and further reproduction of this image panel would need permission from the copyright holder.

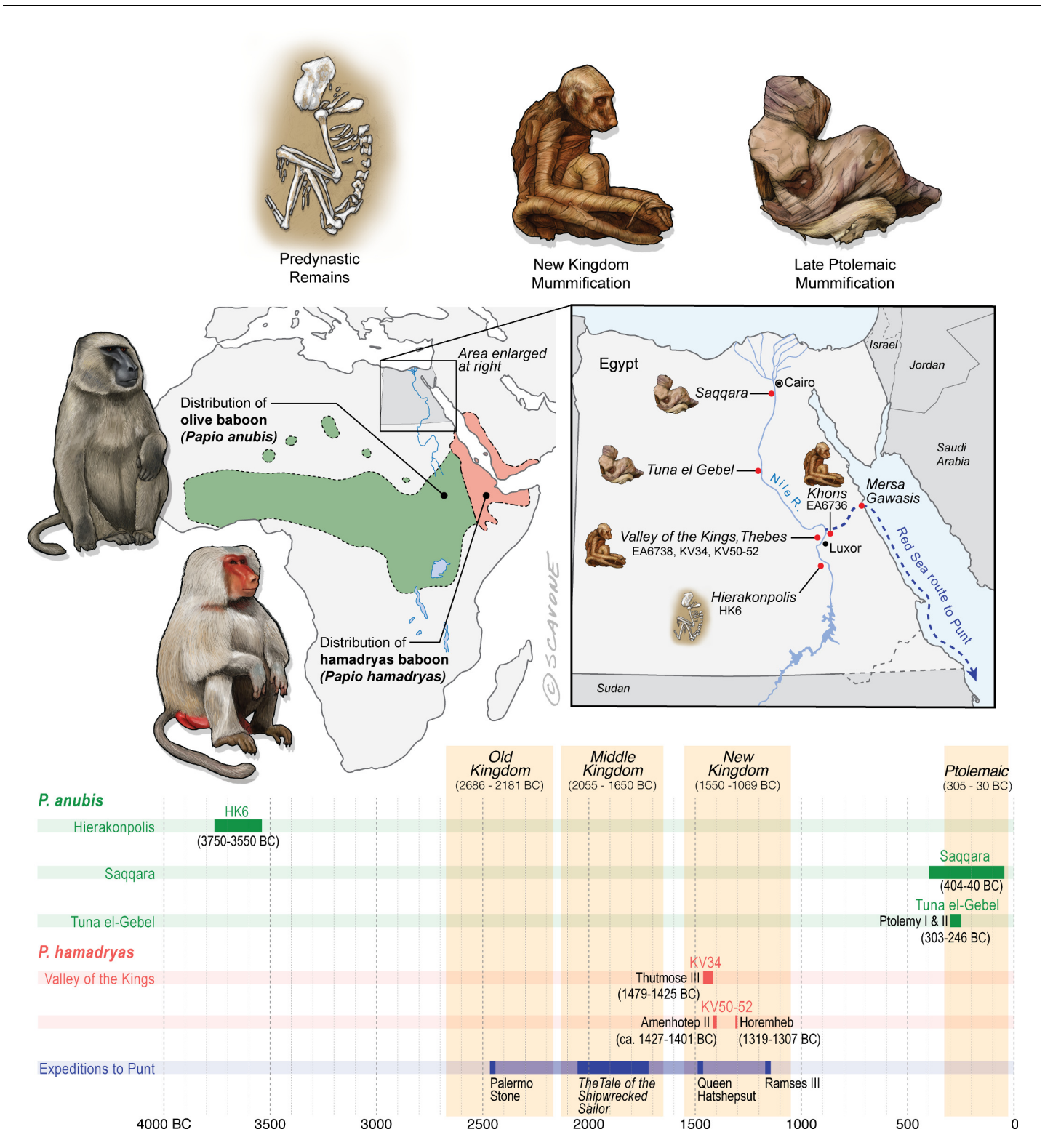


Figure 2. Egypt lies well beyond the distributions of *P. anubis* and *P. hamadryas*, and there is no evidence of natural populations in Egypt during antiquity. The remains of baboons in Egypt are therefore interpreted as evidence of foreign trade. This figure puts the present study specimens—EA6736, EA6738, and those of Saqqara—into context by illustrating spatiotemporal variation in the preservation of baboons, emphasizing differences in taxonomy, wrapping, and deposition (i.e., burials, tombs, or catacombs). Horizontal bars represent the temporal spans of baboon-bearing archaeological sites and known expeditions to Punt. Every New Kingdom specimen of *P. hamadryas* is penecontemporaneous with expeditions to Punt
 Figure 2 continued on next page

Figure 2 continued

and associated with a royal temple or tomb. The quality of New Kingdom mummification is often extremely high, in part because the limb and tail elements were wrapped individually. Excluded from this figure is a baboon of uncertain taxonomy and disposition found buried in a palace at Tell el-Dab'a, and dating from the 18th Dynasty (*von den Driesch, 2006*). Mersa Gawasis is a Middle Kingdom harbor and port that was used to launch and receive seafaring voyages to Punt.

Illustration by William Scavone, Kestrel Studios.

in ancient Egypt. The physiology of baboons is particularly well suited to this approach, although the above evidence of prolonged captivity poses a practical challenge.

Baboons sweat under conditions of thermal stress, turning to sources of meteoric water (pools, streams, lakes) to replenish their body water and maintain homeothermy. Termed 'obligate drinking', this daily behavior produces a strong, mechanistic link between the oxygen isotope ratios ($^{18}\text{O}/^{16}\text{O}$) of precipitation and the baboons themselves (*Moritz et al., 2012*). Such a relationship is advantageous when using oxygen isotope values ($\delta^{18}\text{O}$) to trace the regional movements of animals (*Bowen et al., 2005b*), including primates (*Ehleringer et al., 2008*); however, it can be difficult to determine region-of-origin from $\delta^{18}\text{O}$ values alone, a problem that is only exacerbated with increasing time depth.

Another problem is twofold: first, each mummified baboon in our sample died under captive conditions, and it follows that they were provisioned with Nile-sourced drinking water for some portion of their lives (*Touzeau et al., 2013*), which is expected to undermine the geospatial value of $\delta^{18}\text{O}$ values in tissues that turn over quickly; and second, we have a limited sample of mixed tissues—hair from EA6736 (*Figure 3a*); hair, bone, and enamel from EA6738 (*Figure 3c*); and bone from five skulls, each from the Baboon Catacomb of North Saqqara—representing varying periods of temporal integration. Bone and enamel apatite incorporate years of dietary behavior at different life history stages, whereas hair keratin records information over weeks and months prior to death depending on length.

The enamel of EA6738 holds promise because the mineralization of its permanent incisors occurred early in life, between 1 and 3 years of age (*Dirks et al., 2002*); and because, in contrast to bone mineral, enamel apatite is resistant to postmortem alteration (*Hoppe et al., 2003*). It invites measurement of strontium isotope ratios—the $^{87}\text{Sr}/^{86}\text{Sr}$ ratio of soils enters foodwebs through leaching by surface waters—together with those of modern baboons for the purpose of isomapping (*Bataille et al., 2020*). Accordingly, we collected 155 tissue samples from modern baboons representing 77 discrete locations (*Appendix 1—tables 1 and 2*), and employed a dual-isotope ($\delta^{18}\text{O}$; $^{87}\text{Sr}/^{86}\text{Sr}$) approach to estimate the geoprovenance of baboons imported into ancient Egypt.

Results and discussion

Late and Ptolemaic specimens

We measured strontium isotope ratios in the bone apatite of *P. anubis* ($n = 5$) recovered from the Baboon Catacomb of North Saqqara and accessioned in the Petrie Museum of Egyptian Archaeology, University College London (*Appendix 1—figure 3*). The $^{87}\text{Sr}/^{86}\text{Sr}$ ratios were strikingly invariant ($\bar{x} = 0.70779 \pm 0.00007$; *Appendix 1—table 3*) and indistinguishable from those of ancient Egyptians and Theban carbonate rocks (*Figure 4*). This finding could result from Sr exchange (diagenesis) with the catacomb itself—indeed, the present samples were probably sourced from piles of macerated, jettisoned bones, the likely result of fourth-century Roman vandalism (*Appendix 1—figure 3*). Diagenesis from contact with the catacomb walls or dust is therefore plausible (*Hoppe et al., 2003*), but it fails to account for the distinctly non-local $^{87}\text{Sr}/^{86}\text{Sr}$ ratio of a vervet in the same assemblage (*Appendix 1—tables 3*).

In general, the aridity of Egyptian tombs acts to preserve the in vivo (biogenic) Sr isotope values of bone apatite (*Touzeau et al., 2013*). If the present Sr values from *P. anubis* are biogenic then they indicate a uniform diet of provisioned food and water that was essentially identical to that of Egyptians living in the Nile Valley. The significance of this interpretation is twofold: first, it corroborates written and osteopathological evidence of prolonged captivity in Egypt, and, by extension, the possibility of a baboon breeding program in Memphis (*Ray, 2011*); and second, it thwarts our goal

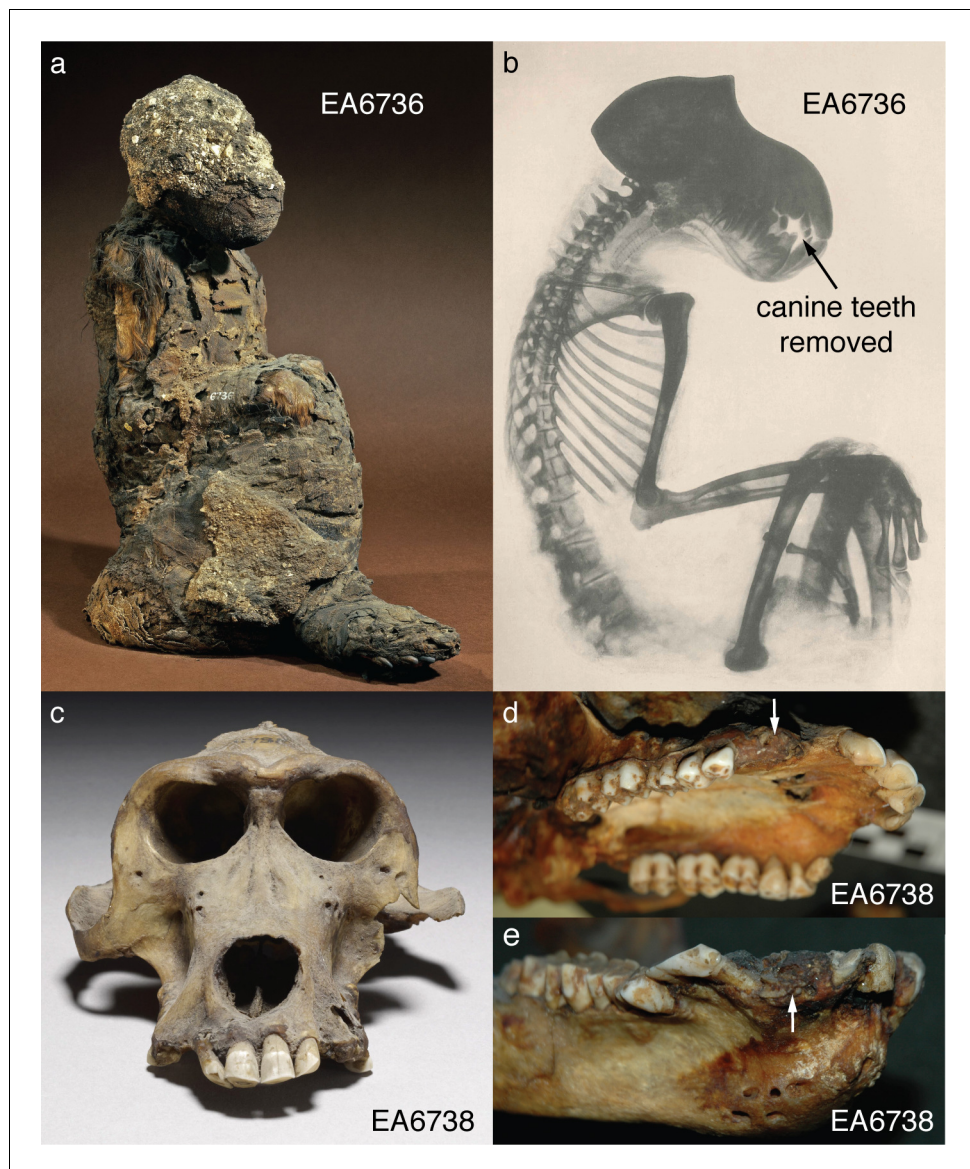


Figure 3. The British Museum holds two mummified baboons with New Kingdom attributions. (a) EA6736 is attributed to *P. hamadryas* (Anderson and de Winton, 1902). The present analysis is based on six strands of hair sourced from the upper right arm. (b) EA6736 was the subject of an early radiograph in 1899, which revealed the absence of four canine teeth (Anderson and de Winton, 1902). (c) EA6738 is also attributed to *P. hamadryas* (Anderson and de Winton, 1902), and it was the source of three tissue types: hair, bone, and enamel. It is also devoid of canines. Ossification of the corresponding maxillary (d) and mandibular (e) alveolar sockets is evidence that the animal survived the procedure for many years.

Photographs in panels (d) and (e) by author NJD.

© 2020, The Trustees of the British Museum, CC BY-NC-SA 4.0. Figure 3A is reproduced from The Trustees of the British Museum, 2020, under the terms of the Creative Commons Attribution-NonCommercial-ShareAlike 4.0; this image is not distributed under the terms of the CC0 1.0 license, and further reproduction of this image panel should adhere to the terms of the CC BY-NC-SA 4.0 license).

© 2020, The Trustees of the British Museum, CC BY-NC-SA 4.0. Figure 3C is reproduced from The Trustees of the British Museum, 2020, under the terms of the Creative Commons Attribution-NonCommercial-ShareAlike 4.0; this image is not distributed under the terms of the CC0 1.0 license, and further reproduction of this image panel should adhere to the terms of the CC BY-NC-SA 4.0 license).

Box 2. Canine teeth and their extraction.

The extraction of canines in vivo was a prudent safety precaution—a single bite from an adult male baboon can cut human thigh muscle to the bone (**Walker, 1984**), and the available evidence points to regular interactions between humans and baboons at close quarters. Scores of New Kingdom paintings depict *P. hamadryas* working with people, often in a utilitarian role (as police animals; as fruit-harvesters [**d’Abbadie, 1964; d’Abbadie, 1965; d’Abbadie, 1966; Houlihan, 1997; Osborn and Osbornová, 1998; Deputte and Anderson, 2009**]), whereas some mummified individuals are interpreted as royal pets (**Ikram, 2004**) due to the high quality of mummification (**Lortet and Gaillard, 1909**) and close association with royal tombs (**Davis et al., 1908**). Canine extraction is evident in specimens of *P. hamadryas* from three royal tombs—KV34 (Thutmose III), KV51, and KV52—in the Valley of the Kings. It is also evident in the assemblage of baboons from nearby Gabanet el Giroud (**Lortet and Gaillard, 1907**), containing *P. hamadryas* ($n = 4$ females, two males), *P. anubis* ($n = 5$ females, one male), and five indeterminate juveniles. It has some New Kingdom affinities (**Lortet and Gaillard, 1907**), but radiocarbon dating of one specimen (MHNL 90001206; Musée des Confluences, Lyon) produced a date range of 803–544 BC (**Porcier et al., 2019**). The assemblage features numerous osteopathologies and examples of burial in lieu of formal mummification. In general, scholars tend to view canine extraction as a measure of human esteem because it speaks to close human-baboon interactions.



Box 2—figure 1. Adult males of *Papio hamadryas* have large, formidable canine teeth that can be used to telling effect.

Photograph by author NJD.

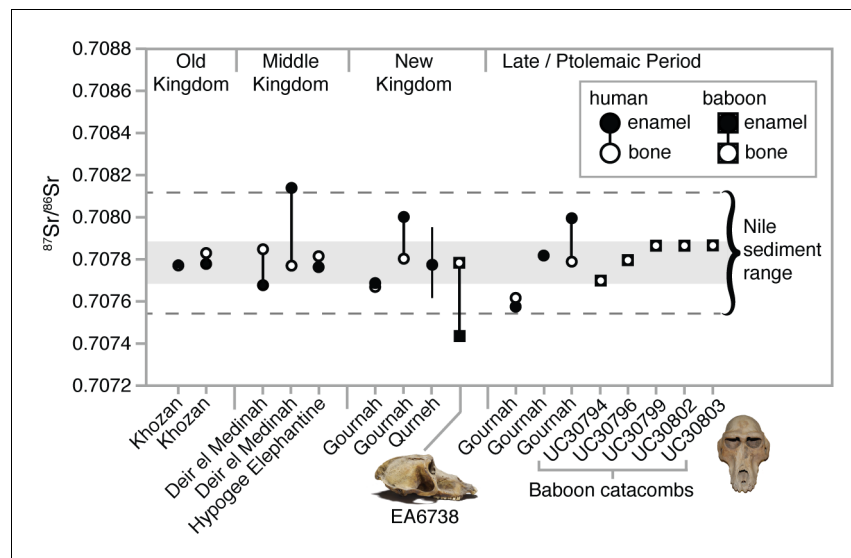


Figure 4. Strontium isotope ratios ($^{87}\text{Sr}/^{86}\text{Sr}$) of enamel and bone from humans (Touzeau et al., 2013) and baboons—EA6738 (*Papio hamadryas*; Thebes) and UC30794–UC30803 (*P. anubis*; Baboon Catacomb, North Saqqara)—recovered from Egyptian sites. The data set from Qurneh represents 15 people (mean \pm 1 SD; source: Buzon and Simonetti, 2013). The gray-shaded region represents the range of Theban carbonate rocks, whereas the dashed lines define the range of Nile sediments (source: Touzeau et al., 2013). The divergent strontium isotope ratios of EA6738 are telling: the composition of enamel indicates early-life mineralization outside of Egypt, whereas the composition of bone indicates complete diagenesis or many years of living in Egypt prior to death and mummification.

of determining the geoprovenance of this sample. Fortunately, our analysis of two New Kingdom specimens proved more revealing.

New Kingdom specimens

We sampled three tissues—enamel, bone, and hair—from EA6738; and, significantly, we detected contrasting $^{87}\text{Sr}/^{86}\text{Sr}$ ratios between the enamel (0.707431), a tissue that formed early in life (before 3 years of age), and bone (0.707768), a tissue that is either entirely diagenetic or reflective of the final 5–10 years of life. The former ratio lies beyond the range of Nile sediments, whereas the latter is indistinguishable from those of New Kingdom Egyptians (Figure 4). This result is important for two reasons: it demonstrates that EA6738 was (i) born outside of Egypt and (ii) imported into Egypt where it lived for many years. Thus, we infer that the hair of EA6738—with a mean $\delta^{18}\text{O}$ value of $16.4 \pm 1.2\%$ ($n = 3$ replicates)—is a reflection of the water that it drank under captive conditions.

Crucially, the hair of another specimen (EA6736) is substantially more enriched in ^{18}O , with a mean $\delta^{18}\text{O}$ value of $19.2 \pm 0.4\%$ ($n = 5$ replicates). The magnitude of this difference is telling, for it indicates the likely retention of geoprovenance-reflecting $\delta^{18}\text{O}$ values; that is, it would appear that the death and mummification of EA6736 occurred soon (days-to-months) after its arrival in Egypt. Thus, our dual-isotope ($\delta^{18}\text{O}$; $^{87}\text{Sr}/^{86}\text{Sr}$) approach to isomapping was based on the hair of EA6736 and enamel of EA6738, respectively.

To estimate the geoprovenance of these tissues, we derived spatially distributed estimates of $\delta^{18}\text{O}$ and $^{87}\text{Sr}/^{86}\text{Sr}$ from the tissues of modern baboons (Appendix 1—tables 1 and 2), and calculated normalized differences against each target tissue, the hair of EA6736 (Figure 5a) and enamel of EA6738 (Figure 5b). It is evident that variation in $\delta^{18}\text{O}$ does little to constrain our results geographically, but it does refine our sparse sample of bone- and enamel-derived $^{87}\text{Sr}/^{86}\text{Sr}$ ratios. Accordingly, we combined the normalized differences of both isotope ratios to visualize an area within 1 SE of both target tissues (Figure 5c). The area encompasses much of present-day Ethiopia, Eritrea, and Djibouti, and portions of Somalia and Yemen.

A limitation of this analysis is our use of a baboon-derived isoscape, which excludes areas now devoid of baboons, such as Nubia in northern Sudan and southern Egypt. During antiquity, it is

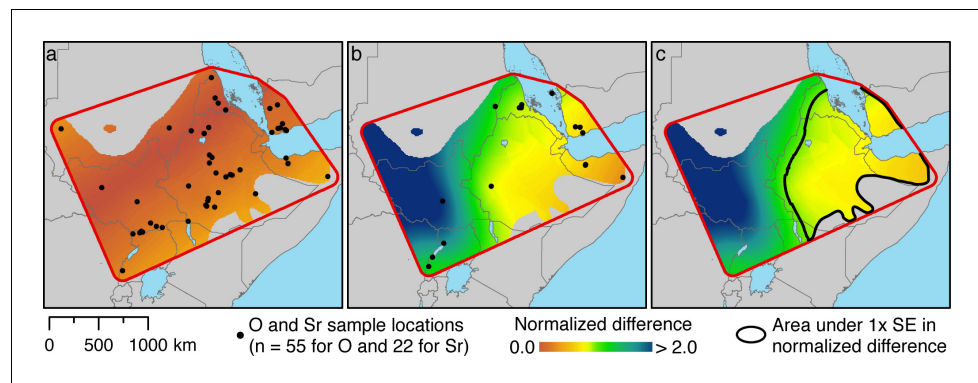


Figure 5. Spatial estimation of isotope ratios and their differences from target values using Empirical Bayesian Kriging. (a) Specimen locations of modern baboons (black points; source: **Appendix 1—table 1**) and the normalized difference values for $\delta^{18}\text{O}$ against our target tissue, the hair of EA6736. (b) Specimen locations of modern baboons (black points; source: **Appendix 1—table 2**) and the normalized difference values for $^{87}\text{Sr}/^{86}\text{Sr}$ ratios against our target tissue, the enamel of EA6738. (c) The combined normalized difference of both isotope ratios against both target tissues. The black line bounds the area within 1 SE. Some points in panels (a) and (b) include multiple samples.

plausible that this region accommodated wild or captive populations of export-ready baboons. To explore whether EA6738 could have origins in ancient Nubia, we produced a spatial model (**Appendix 1—figure 4**) using the global bioavailable strontium isoscape of *Bataille et al., 2020*. This exercise rules out ancient Nubia as a source of EA6738, but see **Box 3** for further discussion.

Geoprovenance and Punt

A strength of our result is that it puts EA6738 squarely within the natural distribution of *P. hamadryas* (**Figure 2**). The significance is twofold: first, it bears witness to the astounding reach of Egyptian seafaring during the 2nd millennium BC; and second, it corroborates reports of long-distance trade with Punt, a toponym of enduring fascination and debate.

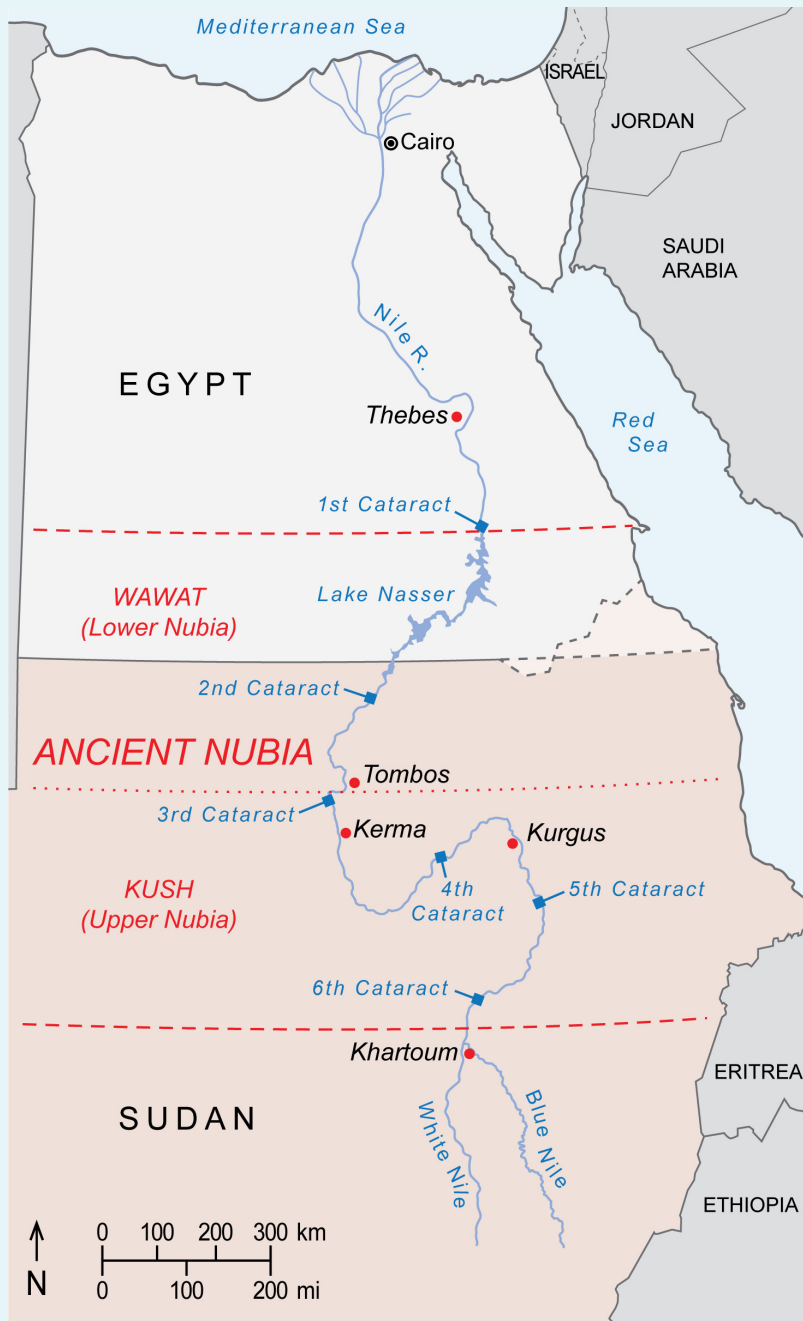
Punt occupied a region south and east of Egypt, and was accessible by land or sea. For Egyptians, Punt was a source of ‘marvels’, particularly aromatic resins, that drove bidirectional trade for 13 centuries (ca. 2500–1170 BC; **Figure 2**). Some scholars view this commercial enterprise as the beginning of globalization (*Fattovich, 2012*), whereas others describe it as the beginning of the spice route (*Keay, 2006*), a trade network that would shape geopolitical fortunes for millennia. The global historical importance of Punt is therefore considerable, but there is a problem, which *Phillips, 1997* put succinctly: “Punt has not yet been located with certainty on any map and no archaeological remains have ever been identified even tentatively as Puntite”.

Egyptologists of the 19th century were enthralled with Punt, producing at least 54 arguments for its location (*Breyer, 2016*), but it was the work of *Mariette, 1875* that ushered consensus. He put Punt on the Somali coast, an area that produces premium resin from *Boswellia frereana* (frankincense). A legacy of this era is the modern autonomous state of Puntland in northeast Somalia. *Herzog, 1968* broke with this view when he argued for a location in southern Sudan and northern Ethiopia, between Atbara and the confluence of the White and Blue Niles. Kenneth Kitchen then extended Punt eastward to the Red Sea coast of present-day Eritrea (*Kitchen, 1971; Kitchen, 1993; Kitchen, 2004*), a stretch of Africa favored by most scholars since (*O’Connor, 1982; Sleswyk, 1983; Fattovich, 1993; Bradbury, 1996; Balanda, 2005; Kalb, 2009; Breyer, 2016; Bard and Fattovich, 2018*). Some authors have argued for locations as distant as Lake Albert, Uganda (*Wicker, 1998*) or Mozambique (*Lacroix, 1998*), but these claims have met with strong criticism or refutation (*Phillips, 1999; Bard and Fattovich, 2018*). Lastly, sound reasoning exists for the Arabian Peninsula, with Punt representing the whole eastern Red Sea coast as far as present-day Yemen (*Meeks, 2003; Tallet, 2013*).

Nonhuman primates are germane to this debate because Punt was a major emporium for monkeys. The pyramid causeway of Sahure (ca. 2480 BC) depicts the earliest known expedition to Punt, and monkeys are among the imported goods (*El Awady, 2009*). Literature provides another

Box 3. Considering a Nubian origin for EA6738.

Ancient Nubia is divided into Lower Nubia (including the area between the First and Second Nile Cataracts, referred to as Wawat) and the Kingdom of Kush based at Kerma, Upper Nubia. Much of Nubia may have accommodated baboons during the African Humid Period of the early Holocene, before the shift to hyper-arid conditions around 4500 years ago. Scholars have long presumed that relicts of this former distribution survived into antiquity, and that Nubians captured or raised local baboons for export. But supporting evidence is equivocal, including inscrutable rock art near the Fourth Nile Cataract (**Paner and Borcowski, 2005**) and accounts of Nubian tribute in the tomb of Rekhmire (**Figure 1d**) and Papyrus Koller (**Gardiner, 1911**), neither of which rule out Nubia as an entrepôt for trade goods sourced elsewhere. Yet, the enamel of EA6738 has an $^{87}\text{Sr}/^{86}\text{Sr}$ ratio that lies comfortably in the range of values reported for floodplain sediments and human and animal tissues from ancient Nubia (**Buzon et al., 2007; Buzon and Simonetti, 2013; Woodward et al., 2015**), raising the possibility of a Nubian origin for EA6738. This premise is weakened, however, by Egyptian occupations of Lower Nubia during the Middle Kingdom and again during the New Kingdom, when much of Kush fell to Thutmose I during a military campaign that struck deep into Upper Nubia, reaching Kurgus (**Davies, 2005**). Had *P. hamadryas* existed in Wawat or Kush during these periods of Egyptian control, it would have been readily available for export. Yet, there are no physical specimens of *P. hamadryas* in Egypt prior to the reign of Queen Hatshepsut (**Figure 2**), the first New Kingdom monarch to resume maritime trade with Punt (**Creasman, 2014**). We are mindful of the absence-of-evidence fallacy of logic, but it is telling that imports of *P. hamadryas* from Punt are featured so prominently on the walls of Queen Hatshepsut's mortuary temple (**Figure 1c**), for it suggests a significant achievement that postdates the conquests of Wawat and Kush. On balance, there is little reason to impute a Nubian origin for EA6738.



Box 3—figure 1. Borders of ancient Nubia (orange dashed lines) and present-day political borders.

example. In *The Tale of the Shipwrecked Sailor*, a story dated to the Middle Kingdom, an Egyptian sailor is washed ashore on a magical island in the Red Sea. There he meets a serpent identified as the 'Lord of Punt'. When the sailor is rescued, the serpent presents him with many gifts, including long-tailed monkeys and baboons (Phillips, 1997). Speculation that shipwrecked Egyptian sailors

were responsible for introducing *P. hamadryas* to the Arabian Peninsula is a testament to the curious distribution of this species (Kummer, 1981), but the idea is now refuted (Wildman et al., 2004; Winney et al., 2004; Fernandes, 2009; Kopp et al., 2014).

New Kingdom expeditions to Punt imported living specimens of *P. hamadryas*, as depicted on the reliefs of Deir el-Bahri (Figure 1c) and the tomb-chapels of high officials, dating from Tuthmose III to Amenhotep III. Thus, if the New Kingdom attributions of EA6736 and EA6738 are correct (and the specimens are contemporaneous with voyages to Punt) then our findings corroborate the balance of evidence that puts Punt in (i) the Horn of Africa and (ii) a broader realm, 'God's Land' (Bradbury, 1996), that may encompass the eastern and western coasts of the southern Red Sea (Balanda, 2005; Cooper, 2011). This possibility is attested by Egyptian texts that mention sacred baboons in another Red Sea region called Wetenet, an enigmatic toponym frequently mentioned as the origin of the solar birth and sunrise, evidently in the environs of Punt (Cooper, 2017). It would seem plausible or even probable that Egyptians distinguished between African and Arabian populations of *P. hamadryas*, but resolving this question is a priority for future research.

Greco-Roman traffic in baboons

Our effort to determine the geoprovenance of five Ptolemaic baboons failed to bear fruit, but thousands of additional specimens exist in the subterranean galleries of North Saqqara and Tuna el-Gebel. It is likely that many of these animals were bred in captivity, but it is equally likely that some were imported via the Red Sea, which raises the possibility of using Sr isotope analysis to establish primatological continuity between Punt and the rise of Axum as the principal supplier of African goods to Roman Egypt (Phillips, 1997). Agatharchides of Cnidus (~145 BC) described the shipment of baboons from Ethiopia-Eritrea to Alexandria (Burstein, 1989), as well as cepi (probably patas monkeys, *Erythrocebus patas* [Burstein, 1989]) and sphinx monkeys (probably geladas, *Theropithecus gelada* [Jolly and Ucko, 1969]). Pliny the Elder named the source port—Adulis (near present-day Massawa, Eritrea)—in his *Naturalis Historia*, whereas the Egyptian port of Berenice—then a central hub in the maritime spice route, connecting East and South Asia with Egypt and the Mediterranean Basin (Sidebotham, 2011)—is linked to the transshipment of baboons ('cenocephali') on the *Tabula Peutingeriana* (Geissen, 1984).

Berenice lies ~250 km south of Mersa Gawasis, a Middle Kingdom harbour and port for seafaring to Punt (Figure 2). It has a rich archaeological record, including ceramics from the Gash lowlands, Eritrea, and Yemen, as well as botanical remains from the coastal plains (and immediate hinterland) of Eritrea, from Aqiq to Adulis (Bard and Fattovich, 2018). It is tempting, then, to suggest that Greco-Roman traffic in baboons between Adulis and Berenice merely followed in the wake of Egyptian sailors navigating between Punt and Mersa Gawasis some 2000 years earlier.

Conclusion

Our effort to map the fabled land of Punt should be viewed as provisional. It is evident, however, that ancient Egyptians venerated *P. hamadryas* and traveled great distances to acquire living exemplars. Yet, the distribution of baboons is often overlooked when scholars discuss the location of Punt or the luxury goods that drove the evolution of international maritime commerce. Our results suggest that *P. hamadryas* was an important, contributing factor to the rise of Red Sea trade during the 2nd millennium BC.

Materials and methods

Tissues from mummified baboons were sourced from the British Museum (Figure 3) and the Petrie Museum of Egyptian Archaeology, University College London (n = 5 bone fragments, each from the Baboon Catacomb of North Saqqara; [Appendix 1—figure 3]). We limited sampling to detached tissue fragments contained in specimen boxes, excepting the hair of EA6736, which was cut directly from the specimen (length: ~2 cm). Enamel fragments from EA6738 (Appendix 1—figure 5) were re-fit to the source tooth to verify association. Similarly, hair and bone samples of modern baboons were sourced from the American Museum of Natural History (New York, USA), the Field Museum (Chicago, USA), the Museo di Storia Naturale di Firenze, La Specola (Florence, Italy), the National Museum of Natural History (Washington, D.C., USA), the Natural History Museum (London, UK), and the Powell-Cotton Museum (Quex Park, UK). Additional tissues samples were supplied by colleagues

(Clifford J. Jolly, New York University; Derek E. Wildman, University of South Florida) or collected by ourselves in the field.

Sample preparation and analysis

Oxygen isotope ratios are presented as δ values, where $\delta = 1000[(R_{\text{sample}}/R_{\text{standard}}) - 1]$ and $R = {}^{18}\text{O}/{}^{16}\text{O}$; the reference standard is Vienna standard mean oceanic water (VSMOW). Units are expressed as parts per thousand (‰). To measure the $\delta^{18}\text{O}$ of hair, two to three strands were cleaned of debris, washed three times in a 2:1 mixture of chloroform:methanol, cut into 3 mm-segments, and weighed ($150 \pm 15 \mu\text{g}$) into pre-combusted silver foil capsules. Next, the samples were vacuum dehydrated for a minimum of 6 days to remove oxygen under active exchange with atmospheric water vapor (Bowen et al., 2005a; Bowen et al., 2009). The dried samples were immediately combusted and analyzed with a Thermo-Chemical Elemental Analyzer (TCEA) interfaced with a Delta Plus XP isotope ratio mass spectrometer (IRMS, Thermo Finnigan, Bremen, Germany) located in the Stable Isotope Laboratory of the University of California, Santa Cruz. Analytical precision (± 1 SD) based on 65 IAEA-601 (Benzoic acid) replicates was 0.1‰ and the repeated analysis of a check reference for keratin (local horse hair) was 0.3‰.

Samples of enamel or bone were rinsed with DI H₂O to remove surface contaminants. The samples were then weighed and dissolved in concentrated HNO₃ and 6 M HCl in closed Teflon vials, and dried down. The samples were then re-dissolved in 8 M HNO₃, aliquoted, dried down, and again dissolved in 200 μl of 8 M HNO₃. This solution was loaded onto Sr specific resin (Eichrom) contained in Teflon micro-columns, eluted with 8 M HNO₃, and the Sr collected with DI H₂O. A drop of HClO₄ was then added to the Sr cut which was then dried down at $\sim 150^\circ\text{C}$. The Sr was taken up in one drop concentrated HNO₃ and dried down in preparation for loading for TIMS (thermal ionization mass spectrometry). For TIMS analysis, the Sr samples were taken up in 10% phosphoric acid and dried along with a TaCl emitter solution on outgassed zone refined Re filaments. Sr isotopic measurements were accomplished with a Thermo Scientific Triton multi-collector TIMS instrument located in the Center of Isotope Geochemistry (associated with Lawrence Berkeley National Laboratory and UC Berkeley), and used in static mode (200 ratio cycles measured per analysis). Measured ${}^{87}\text{Sr}/{}^{86}\text{Sr}$ was normalized to a ${}^{86}\text{Sr}/{}^{88}\text{Sr}$ ratio of 0.1194. During the course of analysis, the NBS987 Sr isotopic standard (at least one per barrel) gave a ${}^{87}\text{Sr}/{}^{86}\text{Sr}$ of 0.710253 ± 0.000007 (± 2 s, external, $n = 8$).

Spatial analysis of isotope ratios

The spatial analysis of isotope ratios was conducted within a 100 km buffer region surrounding the polygonal convex hull defined by the location of each tissue sample at the time of collection in the wild. It was further constrained to the mapped range of *P. hamadryas* and *P. anubis* as shown in **Box 1**, which is based on the distributions of Zinner et al., 2013, Fischer et al., 2017, and Singleton et al., 2017. Within this region, Empirical Bayesian Kriging (EBK) was used to derive spatially distributed estimates of $\delta^{18}\text{O}$ for each hair sample and ${}^{87}\text{Sr}/{}^{86}\text{Sr}$ for each bone or enamel sample, using the EBK geoprocessing tool in ArcGIS 10.7 (ESRI, 2019). This Bayesian method of kriging does not require specification of the prior distributions of model parameters and is able to handle non-stationary data (Krivoruchko and Grubov, 2014). For both the $\delta^{18}\text{O}$ values and ${}^{87}\text{Sr}/{}^{86}\text{Sr}$ ratios, a K-Bessel detrended semivariogram model type was used with a local model area overlap factor of 5, a 10-km grid spacing, and a circular search neighborhood including 10 to 15 neighboring points. This process yielded estimated $\delta^{18}\text{O}$ values and ${}^{87}\text{Sr}/{}^{86}\text{Sr}$ ratios and their uncertainties for each grid cell (**Appendix 1—figures 6 and 7**). These values were then transformed into normalized differences from the two target values, the hair of EA6736 (19.2‰) and the enamel of EA6738 (0.707431), by subtracting the target values and dividing by the mean standard error of prediction from the EBK process (2.2 for $\delta^{18}\text{O}$ and 0.0011159 for ${}^{87}\text{Sr}/{}^{86}\text{Sr}$). The two normalized differences were combined using the root sum of squares (RSS) to produce the overall normalized difference metric shown in **Figure 5c**.

Acknowledgements

We acknowledge the assistance of N Abraha, P Agnelli, D Andreasen, D Antoine, A Berhanu, AM Borgstrom, D Brandon-Jones, GAO Britton, EE Butler, V Camomilla, AJ Cunningham, D Deutsch,

PF Dorman, N Fourie, S Gippoliti, L Gordon, R Johnson, CJ Jolly, HL Kafka, MI Khaled, M Harman, T Heath, LR Heaney, A Khattab, JJ and PA Lia, Y Libsekal, M Lowe, DP Lunde, S Pancaldo, JE Phillips-Conroy, S Quirke, JD Ray, JW and MD Ridges, R Sabin, WT Stanley, JH Taylor, I Tesfamariam, DE Wildman, JD Yeakel, and R Young. Archaeological site visits were approved by the Supreme Council of Antiquities (Egypt, permit no. 022569) and the Ministry of Tourism (Eritrea, permit no. DSA-M5. A2). Sampling from wild populations was approved by the Dartmouth Institutional Animal Care and Use Committee (protocol no. 10-16-13), the Uganda National Council for Science and Technology (permit no. NS-267), and the Uganda Wildlife Authority (permit no. FOD/33/02). Samples were exported under CITES permit nos. 314933/01 and 478050/01. Support for the Center of Isotope Geochemistry at LBNL is provided by the Department of Energy, Office of Basic Energy Sciences through contract DE-AC02-05CH11231 to Lawrence Berkeley National Laboratory. Additional funding was received from the Council of American Overseas Research Centers (Multi-Country Research Fellowship to NJD), Dartmouth College (the Professor Arthur M Wilson and Mary Tolford Wilson Faculty Research Fellowship award to NJD; the Women in Science Project), the David and Lucile Packard Foundation (Fellowship no. 2007–31754 to NJD), and the US-Egypt Joint Technology Fund administered by the National Science Foundation (OISE-0923655 to NJD, SI, and PLK).

Additional information

Funding

Funder	Grant reference number	Author
National Science Foundation	OISE-0923655	Nathaniel J Dominy Salima Ikram Paul L Koch
David and Lucile Packard Foundation	2007-31754	Nathaniel J Dominy
U.S. Department of Energy	DE-AC02-05CH11231	John N Christensen
Council of American Overseas Research Centers	Multi-Country Research Fellowship	Nathaniel J Dominy
Dartmouth College	Wilson Faculty Research Fellowship	Nathaniel J Dominy
Dartmouth College	Women in Science Project	Nathaniel J Dominy Gillian L Moritz

The funders had no role in study design, data collection and interpretation, or the decision to submit the work for publication.

Author contributions

Nathaniel J Dominy, Conceptualization, Resources, Data curation, Formal analysis, Funding acquisition, Investigation, Methodology, Writing - original draft, Project administration; Salima Ikram, Conceptualization, Funding acquisition, Methodology, Writing - original draft, Writing - review and editing; Gillian L Moritz, Patrick V Wheatley, Formal analysis, Investigation, Methodology; John N Christensen, Jonathan W Chipman, Formal analysis, Investigation, Methodology, Writing - review and editing; Paul L Koch, Conceptualization, Funding acquisition, Writing - review and editing

Author ORCIDs

Nathaniel J Dominy  <https://orcid.org/0000-0001-5916-418X>

Paul L Koch  <http://orcid.org/0000-0001-5248-1529>

Decision letter and Author response

Decision letter <https://doi.org/10.7554/eLife.60860.sa1>

Author response <https://doi.org/10.7554/eLife.60860.sa2>

Additional files

Supplementary files

- Transparent reporting form

Data availability

All data generated or analyzed during this study are included in the manuscript and supporting files.

References

- Anderson J, de Winton WE. 1902. *Zoology of Egypt: Mammalia*. London: Hugh Rees.
- Balanda S. 2005. The so-called "Mine of Punt" and its location. *Journal of the American Research Center in Egypt* **42**:33–44.
- Bard KA, Fattovich R. 2018. *Seafaring Expeditions to Punt in the Middle Kingdom: Excavations at Mersa/Wadi Gawasis, Egypt*. Leiden: Brill.
- Bataille CP, Crowley BE, Wooller MJ, Bowen GJ. 2020. Advances in global bioavailable strontium isoscapes. *Palaeogeography, Palaeoclimatology, Palaeoecology* **555**:109849. DOI: <https://doi.org/10.1016/j.palaeo.2020.109849>
- Bowen GJ, Chesson L, Nielson K, Cerling TE, Ehleringer JR. 2005a. Treatment methods for the determination of $\delta^2\text{H}$ and $\delta^{18}\text{O}$ of hair keratin by continuous-flow isotope-ratio mass spectrometry. *Rapid Communications in Mass Spectrometry* **19**:2371–2378. DOI: <https://doi.org/10.1002/rcm.2069>, PMID: 16047316
- Bowen GJ, Wassenaar LI, Hobson KA. 2005b. Global application of stable hydrogen and oxygen isotopes to wildlife forensics. *Oecologia* **143**:337–348. DOI: <https://doi.org/10.1007/s00442-004-1813-y>, PMID: 15726429
- Bowen GJ, Ehleringer JR, Chesson LA, Thompson AH, Podlesak DW, Cerling TE. 2009. Dietary and physiological controls on the hydrogen and oxygen isotope ratios of hair from mid-20th century indigenous populations. *American Journal of Physical Anthropology* **139**:494–504. DOI: <https://doi.org/10.1002/ajpa.21008>, PMID: 19235792
- Bradbury L. 1996. Kpn-boats, Punt trade, and a lost emporium. *Journal of the American Research Center in Egypt* **33**:37–60. DOI: <https://doi.org/10.2307/40000604>
- Breyer F. 2016. *Punt: Die Suche Nach Dem 'Gottesland'*. Leiden: Brill.
- Burstein SM. 1989. *Agatharchides of Cnidus: on the Erythraean Sea*. London: Hakluyt Society.
- Buzon MR, Simonetti A, Creaser RA. 2007. Migration in the Nile Valley during the New Kingdom period: a preliminary strontium isotope study. *Journal of Archaeological Science* **34**:1391–1401. DOI: <https://doi.org/10.1016/j.jas.2006.10.029>
- Buzon MR, Simonetti A. 2013. Strontium isotope ($^{87}\text{Sr}/^{86}\text{Sr}$) variability in the Nile Valley: identifying residential mobility during ancient Egyptian and Nubian sociopolitical changes in the New Kingdom and Napatan periods. *American Journal of Physical Anthropology* **151**:1–9. DOI: <https://doi.org/10.1002/ajpa.22235>, PMID: 23440634
- Chala D, Roos C, Svenning JC, Zinner D. 2019. Species-specific effects of climate change on the distribution of suitable baboon habitats - ecological niche modeling of current and Last Glacial Maximum conditions. *Journal of Human Evolution* **132**:215–226. DOI: <https://doi.org/10.1016/j.jhevol.2019.05.003>, PMID: 31203848
- Cooper J. 2011. The geographic and cosmographic expression T3-ntr. *Bulletin for the Australian Centre for Egyptology* **22**:47–66.
- Cooper J. 2017. Between this world and the Duat: the Land of Wetenet and Egyptian cosmography of the Red Sea. In: Di Biase-Dyson C, Donovan L (Eds). *The Cultural Manifestations of Religious Experience: Studies in Honour of Boyo G. Ockinga*. Münster: Ugarit-Verlag. p. 383–394.
- Creasman PP. 2014. Hatshepsut and the politics of Punt. *African Archaeological Review* **31**:395–405. DOI: <https://doi.org/10.1007/s10437-014-9160-9>
- Davies W. 2005. *Egypt and Nubia: Conflict with the Kingdom of Kush*. New York: Metropolitan Museum of Art.
- Davies S. 2006. *The Sacred Animal Necropolis at North Saqqara: The Mother of Apis and Baboon Catacombs: The Archaeological Report*. London: Egypt Exploration Society.
- Davis TM, Maspero G, Ayrton E, Daressy G, Jones E. 1908. *The Tomb of Siptah; the Monkey Tomb and the Gold Tomb*. London: Archibald Constable.
- Deputte BL, Anderson JR. 2009. Baboon palm nut harvesters in ancient Egypt: new (ancient) evidence, new questions. *Folia Primatologica* **80**:70–73. DOI: <https://doi.org/10.1159/000214225>
- Dirks W, Reid DJ, Jolly CJ, Phillips-Conroy JE, Brett FL. 2002. Out of the mouths of baboons: stress, life history, and dental development in the Awash National Park hybrid zone, Ethiopia. *American Journal of Physical Anthropology* **118**:239–252. DOI: <https://doi.org/10.1002/ajpa.10089>, PMID: 12115280
- Dothan T, Regev D. 2011. An inscribed baboon statuette from Tel Miqne-Ekron. *Ägypten und Levante* **21**:211–230. DOI: <https://doi.org/10.1553/AEundL21s211>
- d'Abbadie JV. 1964. Les singes familiers dans l'Antienne Égypte (peintures et bas-reliefs): I. L'Antien Empire. *Revue d'Égyptologie* **16**:147–177.

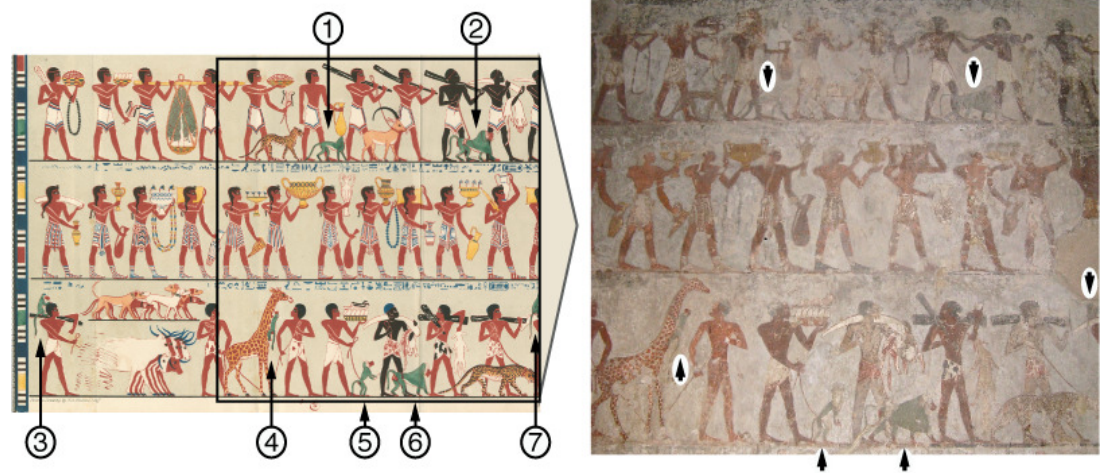
- d'Abbadie JV. 1965. Les singes familiers dans l'Ancienne Égypte (peintures et bas-reliefs): II. *Le Moyen Empire*. *Revue d'Égyptologie* **17**:177–188.
- d'Abbadie JV. 1966. Les singes familiers dans l'Ancienne Égypte (peintures et bas-reliefs): III. *Le Nouvel Empire*. *Revue d'Égyptologie* **18**:143–204.
- Ehleringer JR, Bowen GJ, Chesson LA, West AG, Podlesak DW, Cerling TE. 2008. Hydrogen and oxygen isotope ratios in human hair are related to geography. *PNAS* **105**:2788–2793. DOI: <https://doi.org/10.1073/pnas.0712228105>, PMID: 18299562
- El Awady T. 2009. *Abusir XVI: Sahure - the Pyramid Causeway: History and Decoration Program in the Old Kingdom*. Prague: Charles University in Prague.
- Emery WB. 1969. Preliminary report on the excavations at North Saqqâra, 1968. *Journal of Egyptian Archaeology* **55**:31–35. DOI: <https://doi.org/10.2307/3855997>
- Emery WB. 1970. Preliminary report on the excavations at North Saqqâra, 1968–9. *Journal of Egyptian Archaeology* **56**:5–11. DOI: <https://doi.org/10.1177/030751337005600102>
- ESRI. 2019. *Empirical Bayesian Kriging*. Redlands: Environmental Systems Research Institute.
- Fattovich R. 1993. Punt: the archaeological perspective. In: Zaccone G. M, di Netro T. R (Eds). *Sesto Congresso Internazionale De Egittologia: Atti, Vol. 2*. Torino: Società Italiana per il Gas. p. 399–405.
- Fattovich R. 2012. Egypt's trade with Punt: new discoveries on the Red Sea coast. *British Museum Studies in Ancient Egypt and Sudan* **18**:1–59.
- Fernandes CA. 2009. Bayesian coalescent inference from mitochondrial DNA variation of the colonization time of Arabia by the hamadryas baboon (*Papio hamadryas hamadryas*). In: Petraglia MD, Rose JI (Eds). *The Evolution of Human Populations in Arabia. Vertebrate Paleobiology and Paleoanthropology*. Dordrecht: Springer. p. 89–100. DOI: https://doi.org/10.1007/978-90-481-2719-1_7
- Fischer J, Kopp GH, Dal Pesco F, Goffe A, Hammerschmidt K, Kalbitzer U, Klapproth M, Maciej P, Ndao I, Patzelt A, Zinner D. 2017. Charting the neglected west: the social system of Guinea baboons. *American Journal of Physical Anthropology* **162 Suppl 63**:15–31. DOI: <https://doi.org/10.1002/ajpa.23144>, PMID: 28105722
- Gardiner AH. 1911. *Egyptian Hieratic Texts. Series I: Literary Texts From the New Kingdom, Part I: The Papyrus Anastasi I and the Papyrus Koller, Together with Parallel Texts*. Leipzig: JC Hinrichs.
- Geissen A. 1984. Hic cenocephali nascuntur. *Zeitschrift für Papyrologie und Epigraphik* **55**:229–230.
- Geraads D. 1987. Dating the northern African cercopithecoid fossil record. *Human Evolution* **2**:19–27. DOI: <https://doi.org/10.1007/BF02436528>
- Goudsmit J, Brandon-Jones D. 1999. Mummies of olive baboons and barbary macaques in the Baboon Catacomb of the sacred animal necropolis at North Saqqara. *Journal of Egyptian Archaeology* **85**:45–53. DOI: <https://doi.org/10.1177/030751339908500104>
- Groves CP. 1970. *Primate Remains From Saqqâra*: Unpublished report, Department of Physical Anthropology, University of Cambridge.
- Güell i Rous JM. 2018. *The Tomb of Vizier Rekhmire (TT100): A Textual and Iconographic Study*. Rekhmire Receiving Tribute. Barcelona: Editorial La Vocal de Lis.
- Harris JE, Weeks KR. 1973. *X-Raying the Pharaohs*. New York: Charles Scribner's Sons.
- Herzog R. 1968. *Punt. Abhandlungen Des Deutsches Archäologischen Instituts Kairo*. Glückstadt: Verlag JJ Augustin.
- Hoppe KA, Koch PL, Furutani TT. 2003. Assessing the preservation of biogenic strontium in fossil bones and tooth enamel. *International Journal of Osteoarchaeology* **13**:20–28. DOI: <https://doi.org/10.1002/oa.663>
- Hoskins GA. 1835. *Travels in Ethiopia, Above the Second Cataract of the Nile; Exhibiting the State of That Country, and Its Various Inhabitants, Under the Dominion of Mohammed Ali; and Illustrating the Antiquities, Arts, and History of the Ancient Kingdom of Meroe*. London: Longman, Rees, Orme, Brown, Green, & Longman.
- Houlihan PF. 1997. Harvesters or monkey business? *Göttinger Miszellen* **157**:31–43.
- Ikram S. 2004. *Beloved Beasts: Animal Mummies From Ancient Egypt*. Cairo: Supreme Council of Antiquities Press.
- Ikram S. 2005. *Divine Creatures: Animal Mummies in Ancient Egypt*. Cairo: American University in Cairo Press.
- Ikram S, Iskander N. 2002. *Catalogue Général of Egyptian Antiquities in the Cairo Museum: Non-Human Mummies*. Cairo: Supreme Council of Antiquities Press.
- Jolly CJ. 1993. Species, subspecies, and baboon systematics. In: Kimbel WH, Martin LB (Eds). *Species, Species Concepts and Primate Evolution*. Boston, MA: Springer. p. 67–107.
- Jolly CJ, Ucko PJ. 1969. The riddle of the sphinx-monkey. In: Douglas M, Kaberry PM (Eds). *Man in Africa*. London: Tavistock. p. 319–335.
- Kalb J. 2009. Awsa and Punt: into the mix. *Nyame Akuma* **71**:31–34.
- Keay J. 2006. *The Spice Route: A History*. Berkeley: University of California Press. DOI: https://doi.org/10.1111/j.1540-6563.2008.00233_73.x
- Kessler D. 1989. *Die Heiligen Tiere Und Der König. Teil I: Beiträge Zu Organisation, Kult Und Theologie Der Spätzeitlichen Tierfriedhöfe*. Wiesbaden: Otto Harrassowitz. DOI: <https://doi.org/10.21608/ejars.2016.6846>
- Kessler D, Nur el-Din AH. 2005. Tuna al-Gebel: millions of ibises and other animals. In: Ikram S (Ed). *Divine Creatures: Animal Mummies in Ancient Egypt*. Cairo: American University in Cairo Press. p. 120–163.
- Kitchen KA. 1971. Punt and how to get there. *Orientalia* **40**:184–207.
- Kitchen KA. 1993. The Land of Punt. In: Shaw T, Sinclair P, Andah B, Okpoko A (Eds). *The Archaeology of Africa: Food, Metals and Towns*. London: Routledge. p. 587–608.

- Kitchen KA.** 2004. The elusive Land of Punt revisited. In: Lunde P, Porter A (Eds). *Trade and Travel in the Red Sea Region*. Oxford: Argentum Press. p. 25–31.
- Kopp GH, Roos C, Butynski TM, Wildman DE, Alagaili AN, Groeneveld LF, Zinner D.** 2014. Out of Africa, but how and when? the case of hamadryas baboons (*Papio hamadryas*). *Journal of Human Evolution* **76**:154–164. DOI: <https://doi.org/10.1016/j.jhevol.2014.08.003>, PMID: 25257698
- Krivoruchko K, Gribov A.** 2014. Pragmatic Bayesian kriging for non-stationary and moderately non-Gaussian data. In: Pardo-Igúzquiza E, Guardiola-Albert C, Heredia J, Moreno-Merino L, Durán J, Vargas-Guzmán J (Eds). *Mathematics of Planet Earth. Lecture Notes in Earth System Sciences*. Berlin: Springer. p. 61–64.
- Kummer H.** 1981. Mammals of Saudi Arabia: primates: a survey of hamadryas baboons in Saudi Arabia. *Fauna of Saudi Arabia* **3**:441–471.
- Lacroix WFG.** 1998. *Africa in Antiquity: A Linguistic and Toponymic Analysis of Ptolemy's Map of Africa, Together with a Discussion of Ophir, Punt and Hanno's Voyage*. Saarbrücken: Verlag für Entwicklungspolitik.
- Lortet L, Gaillard C.** 1907. La faune momifiée de l'Ancienne Égypte (deuxieme serie). *Archives Du Muséum d'Histoire Naturelle De Lyon* **9**:1–130.
- Lortet L, Gaillard C.** 1909. La faune momifiée de l'Ancienne Égypte et recherches anthropologiques: Nécropole des Singes et Vallée des Rois. *Archives Du Muséum d'Histoire Naturelle De Lyon* **10**:1–9.
- Mariette A.** 1875. *Les Listes Géographiques Des Pylons De Karnak Comprenant La Palestine, L'Ethiophe, Le Pays De Somal*. Leipzig: Hinrichs.
- Meeks D.** 2003. Locating Punt. In: O'Connor D, Quirke S (Eds). *Mysterious Lands*. London: University College London Press. p. 53–80.
- Moritz GL, Fourie N, Yeakel JD, Phillips-Conroy JE, Jolly CJ, Koch PL, Dominy NJ.** 2012. Baboons, water, and the ecology of oxygen stable isotopes in an arid hybrid zone. *Physiological and Biochemical Zoology* **85**:421–430. DOI: <https://doi.org/10.1086/667533>, PMID: 22902370
- Nerlich AG, Parsche F, Von Den Driesch A, Löhrs U.** 1993. Osteopathological findings in mummified baboons from ancient Egypt. *International Journal of Osteoarchaeology* **3**:189–198. DOI: <https://doi.org/10.1002/oa.1390030305>
- Osborn DJ, Osbornová J.** 1998. *The Mammals of Ancient Egypt*. Warminster: Aris & Phillips.
- O'Connor D.** 1982. Egypt, 1552–664 BC. In: Clark J. D (Ed). *The Cambridge History of Africa, Volume I: From the Earliest Times to c. 500 BC*. Cambridge: Cambridge University Press. p. 830–940.
- Paner H, Borowski Z.** 2005. Gdańsk Archaeological Museum Expedition. A summary of eight seasons' work at the Fourth Cataract. In: Paner H, Jakobielski S (Eds). *Proceedings of the Archaeology of the Fourth Nile Cataract, Gdańsk–Gniew, 23–25 July 2004*. Gdańsk: Gdańsk Archaeological Museum. p. 89–115.
- Phillips J.** 1997. Punt and Aksum: Egypt and the Horn of Africa. *Journal of African History* **38**:423–457. DOI: <https://doi.org/10.1017/S0021853797007068>
- Phillips J.** 1999. Rereading Ptolemy's map. *Journal of African History* **40**:477–478.
- Porcier S, Richardin P, Louarn G, Ikram S, Berthet D.** 2019. Datations par le carbone 14 de 63 momies animales du Musée des Confluences à Lyon (France). In: Porcier S, Ikram S, Pasquali S (Eds). *Creatures of Earth, Water and Sky: Essays on Animals in Ancient Egypt and Nubia*. Leiden: Sidestone Press. p. 283–292.
- Ray JD.** 2011. *Texts From the Baboon and Falcon Galleries: Demotic, Hieroglyphic and Greek Inscriptions From the Sacred Animal Necropolis, North Saqqara*. London: Egypt Exploration Society.
- Sidebotham SE.** 2011. *Berenike and the Ancient Maritime Spice Route*. Berkeley: University of California Press.
- Singleton M, Seitelman BC, Krecioch JR, Frost SR.** 2017. Cranial sexual dimorphism in the kinda baboon (*Papio hamadryas kindae*). *American Journal of Physical Anthropology* **164**:665–678. DOI: <https://doi.org/10.1002/ajpa.23304>, PMID: 28877335
- Sleeswyk AW.** 1983. On the location of the land of Pwnt on two Renaissance maps. *International Journal of Nautical Archaeology* **12**:279–291. DOI: <https://doi.org/10.1111/j.1095-9270.1983.tb01161.x>
- Tallet P.** 2013. Deux notes sur les expéditions au Pays de Pount. *Revue d'Égyptologie* **64**:189–209.
- te Velde H.** 1988. Some remarks on the mysterious language of the baboons. In: Kamstra J. H, Milde H, Wagtendonk K (Eds). *Funerary Symbols and Religion*. Kampen: JH Kok. p. 129–137.
- Thomas E.** 1979. *Papio hamadryas* and the rising sun. *Bulletin of the Egyptological Seminar* **1**:91–94.
- Touzeau A, Blichert-Toft J, Amiot R, Fourel F, Martineau F, Cockitt J, Hall K, Flandrois J-P, Lécuyer C.** 2013. Egyptian mummies record increasing aridity in the Nile valley from 5500 to 1500 yr before present. *Earth and Planetary Science Letters* **375**:92–100. DOI: <https://doi.org/10.1016/j.epsl.2013.05.014>
- Van Neer W, Linseele V, Friedman RF.** 2004. Animal burials and food offerings at the Elite Cemetery HK6 of Hierakonpolis. In: Hendrickx S, Friedman R. F, Cialowicz K. M, Chlodnicki M (Eds). *Egypt at Its Origins: Studies in Memory of Barbara Adams*. Leuven: Peeters. p. 67–129.
- Van Neer W, Udrescu M, Linseele V, De Cupere B, Friedman R.** 2017. Traumatism in the wild animals kept and offered at Predynastic Hierakonpolis, Upper Egypt. *International Journal of Osteoarchaeology* **27**:86–105. DOI: <https://doi.org/10.1002/oa.2440>
- von den Driesch A.** 1993a. Affenhaltung und affenverehrung in der Spätzeit des Alten Ägypten. *Tierärztliche Praxis* **21**:95–101.
- von den Driesch A.** 1993b. The keeping and worshiping of baboons during the Later Phase in Ancient Egypt. *Sartonia* **6**:15–36.
- von den Driesch A.** 2006. Ausgefallenes wild in Pi-Ramesse (Qantir) und Auaris (Tell el Dab'a) und seine kulturgeschichtliche ausdeutung. In: Czerny E, Heini I, Hunger H (Eds). *Timelines: Studies in Honour of Manfred Bietak*. Leuven: Peeters. p. 311–315.

- von den Driesch A**, Boessneck J. 1985. Krankhaft veränderte skelettreste von pavianen aus Altägyptischer zeit. *Tierärztliche Praxis* **13**:367–372.
- Walker A**. 1984. Mechanisms of honing in the male baboon canine. *American Journal of Physical Anthropology* **65**:47–60. DOI: <https://doi.org/10.1002/ajpa.1330650108>, PMID: 6541880
- Wicker FDP**. 1998. The road to Punt. *The Geographical Journal* **164**:155–167. DOI: <https://doi.org/10.2307/3060367>
- Wildman DE**, Bergman TJ, al-Aghbari A, Sterner KN, Newman TK, Phillips-Conroy JE, Jolly CJ, Disotell TR. 2004. Mitochondrial evidence for the origin of hamadryas baboons. *Molecular Phylogenetics and Evolution* **32**:287–296. DOI: <https://doi.org/10.1016/j.ympev.2003.12.014>, PMID: 15186814
- Winney BJ**, Hammond RL, Macasero W, Flores B, Boug A, Biquand V, Biquand S, Bruford MW. 2004. Crossing the Red Sea: phylogeography of the hamadryas baboon, *Papio hamadryas hamadryas*. *Molecular Ecology* **13**:2819–2827. DOI: <https://doi.org/10.1111/j.1365-294X.2004.02288.x>, PMID: 15315692
- Woodward J**, Macklin M, Fielding L, Millar I, Spencer N, Welsby D, Williams M. 2015. Shifting sediment sources in the world's longest river: a strontium isotope record for the Holocene Nile. *Quaternary Science Reviews* **130**:124–140. DOI: <https://doi.org/10.1016/j.quascirev.2015.10.040>
- Yeakel JD**, Pires MM, Rudolf L, Dominy NJ, Koch PL, Guimarães PR, Gross T. 2014. Collapse of an ecological network in ancient Egypt. *PNAS* **111**:14472–14477. DOI: <https://doi.org/10.1073/pnas.1408471111>, PMID: 25201967
- Zinner D**, Wertheimer J, Liedigk R, Groeneveld LF, Roos C. 2013. Baboon phylogeny as inferred from complete mitochondrial genomes. *American Journal of Physical Anthropology* **150**:133–140. DOI: <https://doi.org/10.1002/ajpa.22185>, PMID: 23180628

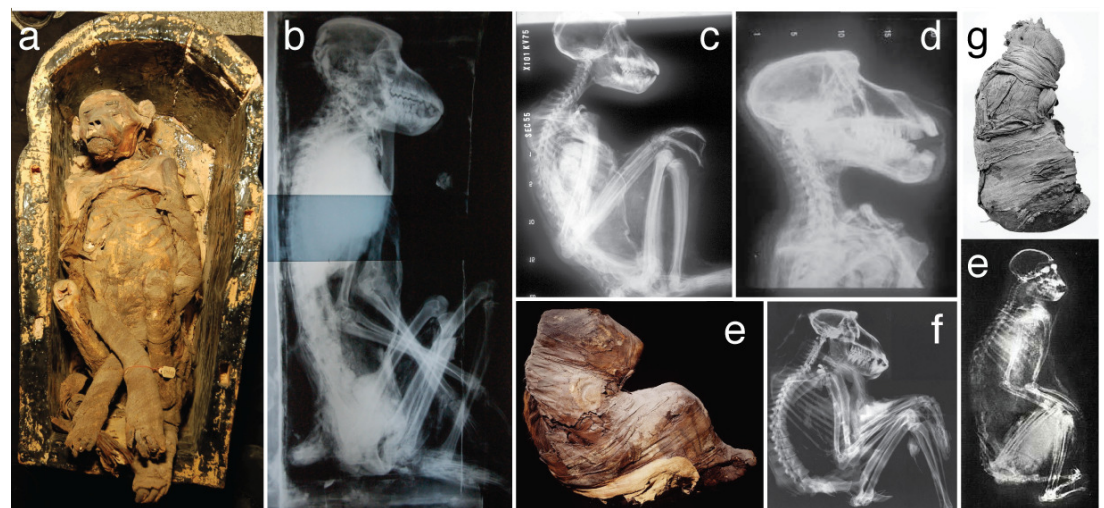
Appendix 1

Monkeys as foreign tribute



Appendix 1—figure 1. Monkeys were depicted as foreign tribute in the mortuary chapel of Rekhmire (TT 100), Vizier to Tuthmose III and Amenhotep II; New Kingdom, 18th Dynasty, ca. 1479–1425 BC. (Left) Facsimile painting by *Hoskins, 1835* (reproduced with permission from the Manuscripts, Archives and Rare Books Division, Schomburg Center for Research in Black Culture, The New York Public Library; this image is free to use without restriction). The upper, middle, and lower registers depict processions from Punt, Keftiu (Crete), and Nubia, Lower Nubia, and Khenethennefer, respectively (*Güell i Rous, 2018*). The tribute bearers from Punt and Nubia are associated with a wide range of natural resources, including seven monkeys, which Hoskins rendered as *Papio hamadryas*. (Right) Six of seven monkeys are detailed in a photograph by author NJD. Monkeys 2 and 6 are unambiguously *P. hamadryas*, whereas monkeys 1, 4, and 5 closely resemble vervets (*Chlorocebus aethiops*) on the basis of tail and cranial morphology.

Further examples of canine tooth extraction

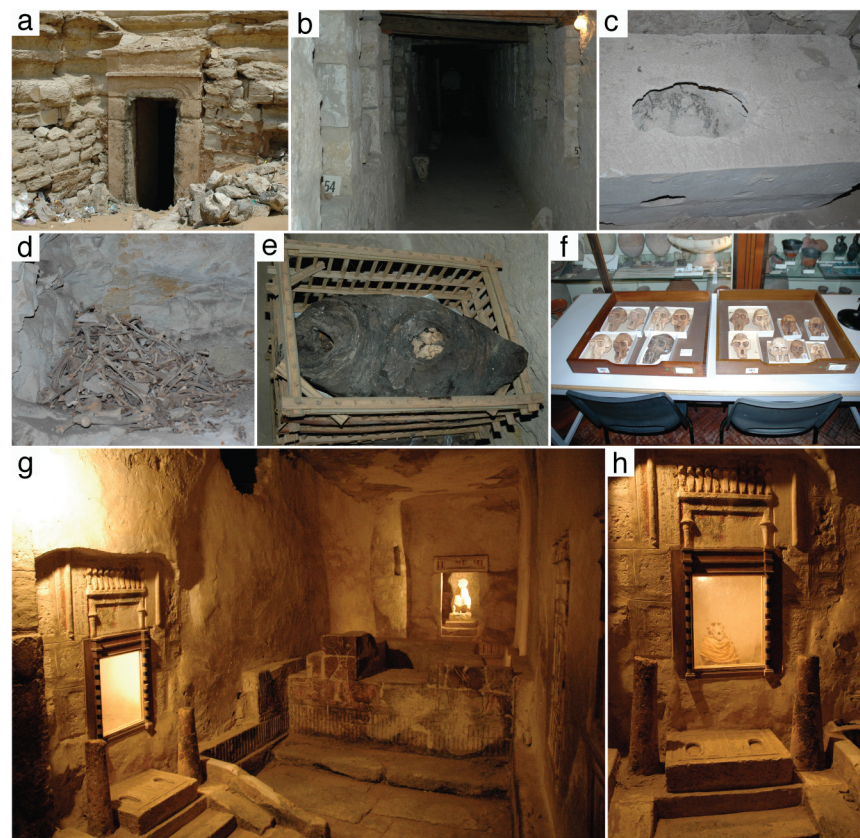


Appendix 1—figure 2 continued on next page

Appendix 1—figure 2 continued

Appendix 1—figure 2. Radiographs reveal the absence of canine teeth in four mummified baboons. (a) Specimen of *P. hamadryas* recovered from KV52, Valley of the Kings, in 1906 (accession no. MM39, Mummification Museum, Luxor). The absence of canines is evident in the corresponding radiograph of MM39 (b) as well as those of two males, (c) JE38746 and (d) JE38744, recovered from KV51 in 1906 and accessioned in the Museum of Egyptian Antiquities, Cairo. In general, the extraction of canine teeth is a hallmark of the New Kingdom; however, it is evident in at least one specimen (e and f) from the Ptolemaic period, demonstrating that the practice is imperfect evidence of a New Kingdom provenance. This specimen has no feet for unknown reasons (accession no. AMM 15). A mummified monkey (g) found with Maetkare (1070–945 BC), a high priestess of the 21 st Dynasty, is often described as a young specimen of *P. hamadryas* based on the radiograph (e) of **Harris and Weeks, 1973**; however, the animal is equipped with adult dentition and is therefore a smaller species, probably *Chlorocebus aethiops* or *Erythrocebus patas* (**Ikram and Iskander, 2002**). It is also missing its canine teeth (accession no. JE26200(e), Museum of Egyptian Antiquities, Cairo). © 2008, Rijksmuseum van Oudheden. Images in panels e and f reproduced from the Rijksmuseum van Oudheden, 2008, under the terms of the [Creative Commons Attribution-ShareAlike 3.0](#); these images are not distributed under the terms of the CC 1.0 license, and further reproduction should adhere to the terms of the CC-BY-SA 3.0 license.

Late and Ptolemaic period specimens of *Papio anubis*



Appendix 1—figure 3. Sources of Late/Ptolemaic period specimens of *Papio anubis*. (a) Entrance to the Baboon Catacomb, North Saqqara, discovered in 1968 (**Emery, 1969**). (b) Niches cut into the walls of the upper gallery. (c) Each niche accommodated a single linen-wrapped baboon in a custom-built rectangular wooden box, infilled with gypsum plaster (**Emery, 1970**). The capacity of the catacomb was 437 burials (**Goudsmit and Brandon-Jones, 1999**). (d) Jettisoned osteological

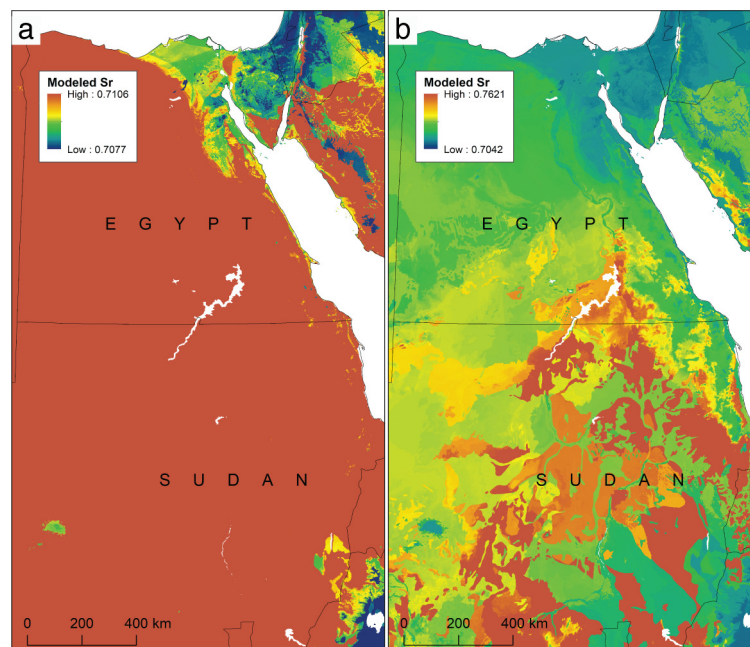
Appendix 1—figure 3 continued on next page

Appendix 1—figure 3 continued

remains are present in some niches, possibly the result of Roman-era destruction. **Emery, 1969** described the wreckage as a ‘frenzy of religious intolerance’. (e) Inventory organized by the 1996 joint expedition mounted by the Egypt Exploration Society and the University of Amsterdam. See **Davies, 2006** for detailed object descriptions. In some cases, the skeletal remains of baboons escaped destruction, existing intact and held together by thick layers of bandages. (f) Skulls from the Baboon Catacomb were donated to the Petrie Museum of Egyptian Archaeology, University College London, in 1969. Detached bone fragments are often present in the specimen boxes, and five such samples were analyzed here. (g) Chamber in the subterranean galleries of Tuna el-Gebel; the baboonification of Thoth is evident in the granite statue at the far end. (h) In the early Ptolemaic period, each niche was fronted by a staircase made of stone slabs, flanked by a pair of conical stone columns that acted as bases for flat bronze offering plates. Between them was a limestone offering-table for libations (**Kessler and Nur el-Din, 2005**).

Photographs by author NJD.

Strontium isoscape of Nubia



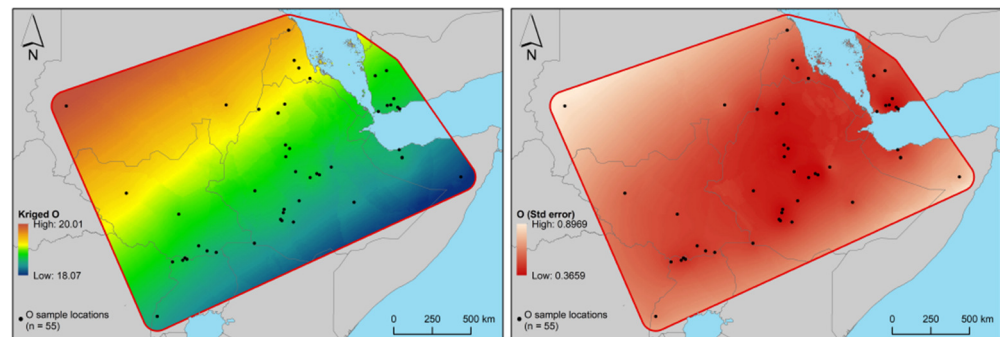
Appendix 1—figure 4. Recent publication of a global bioavailable strontium isoscape motivated us to consider whether the enamel of EA6748 could have an $^{87}\text{Sr}/^{86}\text{Sr}$ ratio (0.707431) that corresponds to areas now devoid of baboons, such as Nubia in northern Sudan and southern Egypt. (a) Spatial model of the Sr isoscape based on the data set of **Bataille et al., 2020**, with values mapped using the same color gradient and range of Sr values in our own spatial model (**Appendix 1—figure 7**). (b) Same, but with a range based on the global mean ± 2 SD in the data set of **Bataille et al., 2020**.

Enamel fragments of EA6738

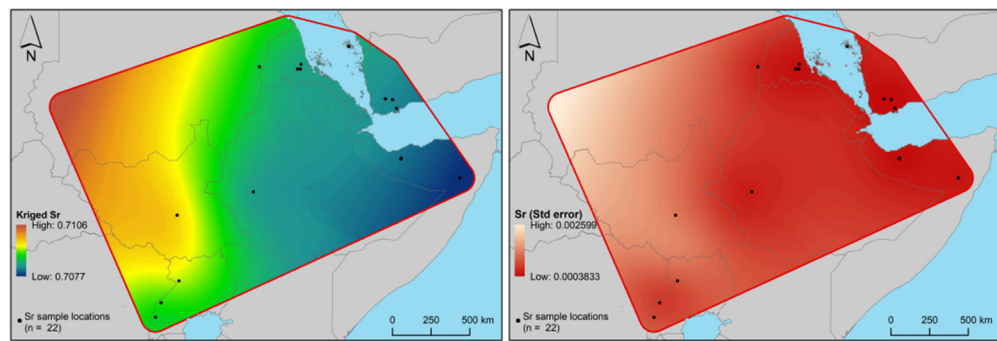


Appendix 1—figure 5. Enamel fragments associated with EA6738. The detached fragments were found in the specimen box and re-fit to the source tooth to verify association.

Spatial estimations and error



Appendix 1—figure 6. Spatial estimation of $\delta^{18}\text{O}$ values (*left*) and the spatially distributed estimated error of prediction (*right*) from Empirical Bayesian Kriging. Black points indicate specimen locations of modern baboons ($n = 55$; some points include multiple samples).



Appendix 1—figure 7. Spatial estimation of $^{87}\text{Sr}/^{86}\text{Sr}$ ratios (*left*) and the spatially distributed estimated error of prediction (*right*) from Empirical Bayesian Kriging. Black points indicate specimen locations of modern baboons ($n = 22$; some points include multiple samples).

Appendix 1—table 1. Sources and identifications of baboon hair samples, together with corresponding oxygen isotope values ($\delta^{18}\text{O}$; ‰, VSMOW) and geoprovenance, as described by collectors, and converted to present-day country names and geographic coordinates in decimal degrees ($^{\circ}$, + = N, - = S for Latitude; + = E for Longitude).

Source	Accession/ID	$\delta^{18}\text{O}$	Source description 1	Source description 2	Country	Latitude	Longitude
NJD	QENJD7	19.8	Queen Elizabeth National Park		Uganda	-0.010358	30.0028
AMNH	184247	18.6	W Nile Dist.	Koboko Co., Utukiliri	Uganda	3.4	30.95
BMNH	1931.4.1.1	19.9	West Madi, N.P.	Pulu	Uganda	3.5	31.5833
BMNH	1937.7.24.1	20.1	Laropi, Moyo	West Madi	Uganda	3.56667	31.85
AMNH	184248	15.2	W Nile Dist.	W. Madi, Moyo	Uganda	3.64967	31.7239
PCM	Uganda	17.4	Kedef Valley	W. of Dodinga	Sudan	4	33.6667
FMNH	67015	16.7	E Equatoria	Torit 50 mi SE; Ikoto	Sudan	4.1	33.1
FMNH	67016	19.2	E Equatoria	Torit 50 mi SE; Ikoto	Sudan	4.1	33.1
NMNH	299672	17.6	Al-Istiwa'lyah Ash-Sharqiyah	Torit	Sudan	4.40806	32.575
BMNH	1900.11.7.1	19.0	R. Omo, L. Rudolf		Ethiopia	4.58333	36.05
FMNH	32906	18.0	Sidamo	Boran Gatelo	Ethiopia	5.91667	38.4667
BMNH	1967.1152	19.1	R. Cullufu	between L. Abaya and L. Chamo	Ethiopia	6	37.75
BMNH	1967.1151	19.8	southwest corner L. Abaya	near Arba Minch	Ethiopia	6.08333	37.6667
AMNH	82184	16.4	Bor to Shambe		Sudan	6.36667	31.3333
BMNH	1964.2174	18.6	Near NW Lake Abaya	Gamo-Gofa	Ethiopia	6.5	37.8333
FMNH	27034	18.9	Arusi	Abul Casim ("Abu el Kassim")	Ethiopia	6.7	37.8833
FMNH	27036	19.5	Bale	Webi Shebeli	Ethiopia	7.16667	42.2333
FMNH	27043	17.2	Shoa, Salali	Awada R; E side; nr Mt Duro	Ethiopia	7.23278	38.8147
BMNH	1902.9.2.1	21.2	Waw [Wau], R. Tur [Jur]	Bahr el Ghazal	Sudan	7.66667	28.0667
AMNH	81061	16.7	Sidamo	Agarasalam	Ethiopia	7.83333	36.0667
AMNH	81062	17.4	Sidamo	Agarasalam	Ethiopia	7.83333	36.0667
PCM	ABYS II 60	21.3	Hawash	6 hr from Oulanketi	Ethiopia	8.67513	39.4938

Continued on next page

Appendix 1—table 1 continued

Source	Accession/ ID	$\delta^{18}\text{O}$	Source description 1	Source description 2	Country	Latitude	Longitude
CJJ		20.0	average of 20 <i>P. anubis</i> (Moritz et al., 2012)	along Awash River, near falls	Ethiopia	8.85	40.0667
CJJ		19.9	average of 23 <i>P. hamadryas</i> (Moritz et al., 2012)	north of Lake Basaka	Ethiopia	8.91667	39.9
FMNH	8171	15.5	Arusi	Menegesha	Ethiopia	9.03333	38.5833
FMNH	27188	13.3	Shoa, Salali	Mugher R; N bank Mulu 25 mi NW	Ethiopia	9.33333	40.8
MZUF	6278	19.7	Garoe	Run	Somalia	8.8	48.8667
BMNH	1910.10.3.1	23.2	Upper Sheikh	British Somaliland	Somalia	9.93333	45.2
BMNH	1902.9.9.3	19.1	Ahuillet, Kotai	West Shoa	Ethiopia	9.95	37.9667
FMNH	1474	19.4	Togdheer	Qar Goliis ("Golis") Mts, Shiikh Pass	Somalia	9.96667	45.2
CMZ	E.7543B	17.8	Somaliland	Berbera	Somalia	10.4333	45.0167
FMNH	27035	18.7	Gojjam	Bichena	Ethiopia	10.45	38.2
FMNH	27041	17.1	Gojjam	Jigga 5 mi E	Ethiopia	10.6667	37.95
FMNH	27042	18.6	Gojjam	Jigga 5 mi E	Ethiopia	10.6667	37.95
FMNH	27037	18.8	Gojjam	Jigga 5 mi E	Ethiopia	10.6667	37.95
FMNH	27192	17.6	Begemdir	Gondar	Ethiopia	12.6	37.4667
FMNH	27191	19.0	Begemdir	Gondar 15 mi NE	Ethiopia	12.6167	37.4833
BMNH	1855.12.24.19	13.0	Subaihi country	60 miles NW of Aden	Yemen	12.75	43.7
FMNH	27193	19.3	Begemdir	Metemma 15 mi SE Gendoa R Camp	Ethiopia	12.8333	36.2833
BMNH	1973.1811	15.6	?Aden	South Yemen	Yemen	12.9196	45.0203
BMNH	1920.7.30.1	20.2	Jebel Marra	Darfur	Sudan	13	24.3333
BMNH	1904.8.2.1	20.9	Mountainous country	behind Lahej, Aden	Yemen	13.0167	44.9
BMNH	1914.3.8.1	22.7	Kamisa, R. Dinder		Sudan	13.0833	34.25
BMNH	1914.3.8.2	22.8	Kamisa, R. Dinder		Sudan	13.0833	34.25
DEW	104	20.5	Jebel Iraf		Yemen	13.1167	44.25
FMNH	27183	18.7	Begemdir	Devark 30 mi NE Gonder	Ethiopia	13.153	37.883
DEW	55	15.3	Salah-Taiz		Yemen	13.15	44.4667
BMNH	1902.11.22.1	21.2	Azraki Ravine		Yemen	13.5333	44.65
BMNH	1939.1027	21.9	Senafe	Habesch	Eritrea	14.7167	39.4333
DEW	30	17.3	Jebel Bura'a		Yemen	14.9	43.4833
DEW	152	14.9	Sana'a		Yemen	15.2167	44.1833
DEW	106	15.5	Bab Al Yemen		Yemen	15.2167	44.1833
PCM	ABYS I	18.1	Nr. Asmara		Eritrea	15.3333	38.75
MZUF	100	19.7	Ausebo	presso Keren, (Bogos?)	Eritrea	15.7833	38.45
PCM	Sudan	21.0	Jebel	Kassala	Sudan	17.5833	38.1

Source abbreviations: American Museum of Natural History (AMNH); Clifford J. Jolly (CJJ); Derek E. Wildman (DEW); Field Museum of Natural History (FMNH); Museo di Storia Naturale di Firenze, La Specola, University of Florence (MZUF); Nathaniel J. Dominy (NJD); National Museum of Natural History (NMNH); Natural History Museum, formerly the British Museum of Natural History (BMNH); Powell-Cotton Museum (PCM); and University Museum of Zoology, Cambridge (CMZ).

Appendix 1—table 2. Sources and identifications of baboon enamel and bone samples, together with corresponding strontium isotope compositions ($^{87}\text{Sr}/^{86}\text{Sr}$) and geoprovenance, as described by collectors, and converted to present-day country names and geographic coordinates in decimal degrees ($^{\circ}$, + = N, - = S for Latitude; + = E for Longitude).

Source	Accession/ ID	$^{87}\text{Sr}/^{86}\text{Sr}$	Source description 1	Source description 2	Country	Latitude	Longitude
MZUF	6278	0.707604	Garoe	Run	Somalia	8.80	48.8667
BMNH	1927.8.14.1	0.709239	Lower Sheikh	British Somaliland	Somalia	9.98333	45.2167
BMNH	1910.10.3.1	0.707509	Upper Sheikh	British Somaliland	Somalia	9.93333	45.20
AMNH	82185	0.712311	Bor to Shambe		Sudan	6.36667	31.3333
PCM	Sudan II	0.708761	Eireirib	Red Sea Province, Kassala	Sudan	15.45	36.40
NJD	MFNP6	0.711806	Murchison Falls National Park		Uganda	2.27729	31.4617
NJD	MFNP8	0.711651	Murchison Falls National Park		Uganda	2.27729	31.4617
NJD	MFNP3	0.711659	Murchison Falls National Park		Uganda	2.27729	31.4617
NJD	SEM BAB3	0.709508	Semliki National Park		Uganda	0.908781	30.356
NJD	SEM BAB2	0.708062	Semliki National Park		Uganda	0.908781	30.356
NJD	QENP5	0.707549	Queen Elizabeth National Park		Uganda	-0.01036	30.0028
AMNH	81062	0.707375	Sidamo	Agarasalam	Ethiopia	7.83333	36.0667
AMNH	81061	0.707406	Sidamo	Agarasalam	Ethiopia	7.83333	36.0667
PCM	ABYS I	0.707030	near Asmara		Eritrea	15.3333	38.75
NJD	Eritrea 1	0.707788	near FilFil		Eritrea	15.6167	38.9667
NJD	Eritrea 2	0.707925	near FilFil		Eritrea	15.6167	38.9667
NJD	Eritrea 3	0.709306	Asmara		Eritrea	15.3324	38.9262
DEW	T650 A	0.707922	Jebel Sabir		Yemen	13.5833	44.20
DEW	T650 B	0.707937	Jebel Sabir		Yemen	13.5833	44.20
MZUF	11329	0.708758	Isole Farasan	Isola Kebir	Saudi Arabia	16.7065	41.9076
BMNH	1902.11.22.1	0.708158	Azraki Ravine		Saudi Arabia	13.5333	44.65
BMNH	1904.8.2.1	0.708629	mountainous country	behind Lahej, Aden	Yemen	13.0167	44.90
MZUF	1669	0.707928	Balad (dintorni)		Somalia	2.36	45.39
MZUF	3267	0.707693	Giohar, ex Villabruzzi		Somalia	2.78	45.50
MZUF	3016	0.707935	Gelib	Isola Alessandra	Somalia	0.49	42.78
MZUF	2557	0.707665	Afgoi		Somalia	2.14	45.12
MZUF	2460	0.708416	Jesomma	Bulo Burti	Somalia	3.85	45.57
AMNH	216246	0.723349	Manica and Sofala		Mozambique	-19.20	34.85
AMNH	216250	0.720642	Inhambane	Zinave	Mozambique	-21.67	33.53
AMNH	216247	0.724701	Manica and Sofala		Mozambique	-19.20	34.85
AMNH	216249	0.722069	Inhambane	Zinave	Mozambique	-21.67	33.53

Source abbreviations: American American Museum of Natural History (AMNH); Derek E. Wildman (DEW); Museo di Storia Naturale di Firenze, La Specola, University of Florence (MZUF); Nathaniel J. Dominy (NJD); Natural History Museum, formerly the British Museum of Natural History (BMNH); and Powell-Cotton Museum (PCM). Nota bene: samples from beyond the distributions of *Papio anubis* and *P. hamadryas* were excluded from further analysis.

Appendix 1—table 3. Strontium isotope compositions ($^{87}\text{Sr}/^{86}\text{Sr}$) of detached bone fragments from skulls recovered from the Baboon Catacomb, North Saqqara, and accessioned in the Petrie Museum of Egyptian Archaeology, University College London.

Accession number	Species	$^{87}\text{Sr}/^{86}\text{Sr}$	$\pm 2\text{ s}$	Notes: Groves, 1970
UC30794	<i>Papio anubis</i>	0.707775	0.000006	Adult female
UC30796	<i>Papio anubis</i>	0.707845	0.000006	Adult female
UC30799	<i>Papio anubis</i>	0.707848	0.000006	Juvenile II male
UC30802	<i>Papio anubis</i>	0.707848	0.000006	Juvenile I, probably female
UC30803	<i>Papio anubis</i>	0.707678	0.000006	Juvenile I, sex indeterminate
UC30804	<i>Macaca sylvanus</i>	0.707851	0.000007	Adult male
UC30807	<i>Chlorocebus aethiops</i>	0.708209	0.000008	Adult male