

UC Irvine

Clinical Practice and Cases in Emergency Medicine

Title

Hyperkalemia-induced Leg Paresis in Primary Adrenal Insufficiency

Permalink

<https://escholarship.org/uc/item/1bk2w6z8>

Journal

Clinical Practice and Cases in Emergency Medicine, 1(4)

Authors

Mansella, Gregory
Stephan, Frank P.
Bingisser, Roland
[et al.](#)

Publication Date

2017

DOI

10.5811/cpcem.2017.7.35165

Copyright Information

Copyright 2017 by the author(s). This work is made available under the terms of a Creative Commons Attribution License, available at <https://creativecommons.org/licenses/by/4.0/>

Peer reviewed

Hyperkalemia-induced Leg Paresis in Primary Adrenal Insufficiency

Gregory Mansella, MD*
 Frank P. Stephan, MD†
 Roland Bingisser, MD*
 Christian H. Nickel, MD*

*University Hospital Basel, Department of Emergency Medicine, Basel, Switzerland
 †University Hospital Basel, Department of Cardiology, Basel, Switzerland

Section Editor: Rick A. McPheeters, DO

Submission history: Submitted June 11, 2017; Revision received July 18, 2017; Accepted July 28, 2017

Electronically published October 6, 2017

Full text available through open access at http://escholarship.org/uc/uciem_cpem

DOI: 10.5811/cpcem.2017.7.35165

[Clin Pract Cases Emerg Med. 2017;1(4):430–432.]

CASE PRESENTATION

A 49-year-old man presented to our emergency department complaining of progressive muscle weakness in his legs for three days. He had no past history of significant health issues, and denied any illicit or recreational drug use. At presentation, vital signs were normal. Physical exam revealed reduced strength (3/5) in his lower extremities but no focal deficits. Laboratory studies showed severe hyperkalemia of 8.6 mmol/l (3.6-4.8 mmol/l),

hyponatremia of 130 mmol/l (135-145 mmol/l) and mild hyperchloremic metabolic acidosis. Kidney function was moderately impaired (serum creatinine 120 μ mol/l (50-100 μ mol/l)). The electrocardiogram (ECG) demonstrated a sinus rhythm with normal heart rate, prolonged PR- and QRS-intervals, tall peaked T-waves and type I Brugada-like pattern in leads V1 and V2 (Image 1).

Four hours after treatment with calcium gluconate, insulin with glucose, and nebulized beta-2 agonist, the ECG

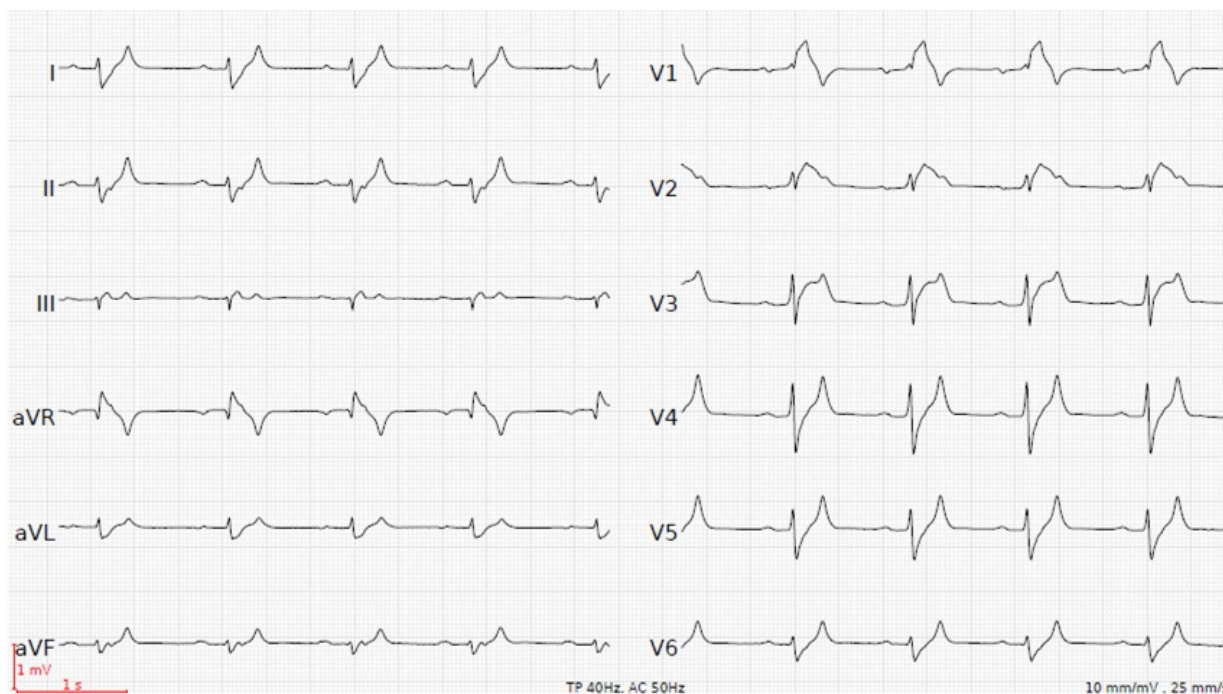


Image 1. Initial electrocardiogram with a heart rate of 54 beats per minute, PR-interval 270 milliseconds, QRS-interval 122 milliseconds. Potassium level of 8.6 mmol/l.

returned to baseline with preexisting right bundle branch block at a potassium level of 6.6 mmol/l (Image 2). Hyponatremia persisted with 130 mmol/l. The patient's symptoms completely resolved.

Autoimmune primary adrenal insufficiency (Addison's disease) was found as the underlying cause of this severe hyperkalemia.

DIAGNOSIS

Hyperkalemia is found in up to 40% of patients with primary adrenal insufficiency due to mineralocorticoid deficiency.¹ Severe hyperkalemia typically causes muscle weakness and rhythm disturbances. Muscle weakness typically begins in the legs with progression to the trunk and arms. Sphincter tone and cranial nerve function are typically not affected. Cardiac manifestations include electrocardiographic changes, conduction abnormalities and cardiac arrhythmias (Table 1).^{2,3} Of note, the progression and severity of ECG changes do not correlate well with the serum potassium level.⁴

This case highlights that hyperkalemia-induced muscle weakness with associated electrocardiographic changes can be the major presenting symptom in primary adrenal insufficiency. The treatment consists of lowering potassium levels and replacement of hydrocortisone and fludrocortisone.¹

CPC-EM Capsule

What do we already know about this clinical entity?
Patients with primary adrenal insufficiency can present with nonspecific symptoms such as weakness. Hyperkalemia is found in up to 40% of patients with primary adrenal insufficiency.

What is the major impact of the image(s)?
The images show reversible hyperkalemia-induced electrocardiographic manifestations (including type I Brugada-like pattern) as a main finding in primary adrenal insufficiency.

How might this improve emergency medicine practice?
This case highlights that hyperkalemia-induced muscle weakness with associated electrocardiographic changes may be the only presenting symptom in primary adrenal insufficiency.



Image 2. Post-treatment electrocardiogram with a heart rate of 66 beats per minute, PR-interval 170 milliseconds, QRS-interval 120 milliseconds. Return to pre-existing right bundle branch block pattern. Potassium level of 6.6 mmol/l.

Table 1. Cardiac manifestations in hyperkalemia.

Electrocardiographic changes	Conduction abnormalities	Cardiac arrhythmias
tall peaked T-waves with shortened QT-interval	right or left bundle branch block	sinus bradycardia, sinus arrest
prolonged PR- and QRS-intervals with small or disappearing P-waves	bifascicular block	slow idioventricular rhythms
further prolongation of the QRS-interval to a sine wave pattern	advanced atrioventricular block	ventricular tachycardia, ventricular fibrillation
	type I Brugada pattern (characterized by high takeoff ≥ 2 mm coved ST-segment elevation followed by a negative T-wave in at least two precordial leads)	asystole

Address for Correspondence: Gregory Mansella, MD, University Hospital Basel, Department of Emergency Medicine, Petersgraben 2, 4031 Basel, Switzerland. Email: gregory.mansella@usb.ch.

Conflicts of Interest: By the CPC-EM article submission agreement, all authors are required to disclose all affiliations, funding sources and financial or management relationships that could be perceived as potential sources of bias. The authors disclosed none.

Copyright: © 2017 Mansella et al. This is an open access article distributed in accordance with the terms of the Creative Commons Attribution (CC BY 4.0) License. See: <http://creativecommons.org/licenses/by/4.0/>

REFERENCES

1. Bancos I, Hahner S, Tomlinson J, et al. Diagnosis and management of adrenal insufficiency. *Lancet Diabetes Endocrinol.* 2015;3(3):216-26.
2. Alfonzo AV, Isles C, Geddes C, et al. Potassium disorders--clinical spectrum and emergency management. *Resuscitation* 2006;70(1):10-25.
3. Littmann L, Monroe MH, Taylor L, 3rd, et al. The hyperkalemic Brugada sign. *J Electrocardiol.* 2007;40(1):53-9.
4. Montague BT, Ouellette JR, Buller GK. Retrospective review of the frequency of ECG changes in hyperkalemia. *Clin J Am Soc Nephrol.* 2008;3(2):324-30.