

UCSF

UC San Francisco Previously Published Works

Title

Expression of Liver Fatty Acid Binding Protein (LFABP) in Hepatocellular Carcinomas

Permalink

<https://escholarship.org/uc/item/19c584p9>

Authors

Cho, S-J
Ferrell, LD
Gill, RM

Publication Date

2013

Peer reviewed



Published in final edited form as:

Hum Pathol. 2016 April ; 50: 135–139. doi:10.1016/j.humpath.2015.12.002.

Expression of liver fatty acid binding protein in hepatocellular carcinoma*

Soo-Jin Cho, MD, PhD, Linda D. Ferrell, MD, and Ryan M. Gill, MD, PhD*

Department of Pathology, University of California, San Francisco, CA 94143

Summary

Loss of expression of liver fatty acid binding protein (LFABP) by immunohistochemistry has been shown to be characteristic of a subset of hepatocellular adenomas (HCAs) in which *HNF1A* is inactivated. Transformation to hepatocellular carcinoma is thought to be a very rare phenomenon in the *HNF1A*-inactivated variant of HCA. However, we recently observed 2 cases at our institution, 1 definite hepatocellular carcinoma and 1 possible hepatocellular carcinoma, with loss of LFABP staining, raising the possibility that LFABP down-regulation may be associated with hepatocellular carcinogenesis. Our aim was to evaluate hepatocellular carcinomas arising in various backgrounds and with varying degrees of differentiation for loss of LFABP staining. Twenty total cases of hepatocellular carcinoma were examined. Thirteen cases arose in a background of cirrhosis due to hepatitis C (n = 8) or steatohepatitis (n = 5); 7 cases arose in a noncirrhotic background, with 2 cases arising within *HNF1A*-inactivated variant HCA and 2 cases arising within inflammatory variant HCA. Complete loss of expression of LFABP was seen in 6 of 20 cases, including 2 cases of hepatocellular carcinoma arising within *HNF1A*-inactivated variant HCA. Thus, loss of staining for LFABP appears to be common in hepatocellular carcinoma and may be seen in well-differentiated hepatocellular carcinoma. Therefore, LFABP loss should not be interpreted as evidence for hepatocellular adenoma over carcinoma, when other features support a diagnosis of hepatocellular carcinoma. The findings raise consideration for a role of *HNF1A* inactivation in hepatocellular carcinogenesis, particularly in less differentiated tumors.

Keywords

Liver fatty acid binding protein; Hepatocellular carcinoma; Hepatocellular adenoma; *HNF1A*; Well differentiated hepatocellular neoplasm

1. Introduction

Hepatocellular carcinoma (HCC) is the most common malignant primary tumor in the liver with most cases arising in the setting of chronic liver disease, often in patients with cirrhosis. Common etiologic associations include cirrhosis, viral hepatitis (specifically in chronic hepatitis B and C infection), aflatoxin B1, hereditary hemochromatosis, alcohol, and fatty

*Disclosures: The authors have no conflict of interest to declare.

*Corresponding author. Department of Pathology, University of California, 505 Parnassus Ave, Box 0102, San Francisco, CA 94143. ryan.gill@ucsf.edu (R. M. Gill).

liver disease. HCC arising outside the setting of cirrhosis has been particularly noted in patients with metabolic syndrome, emphasizing that multiple mechanisms of disease likely account for progression to HCC.

Hepatocellular adenoma (HCA), on the other hand, is a benign liver tumor, often seen in the setting of oral contraceptive use. Recent molecular studies have allowed for subclassification of HCAs [1–7]. One subtype, accounting for approximately 30% to 40% of HCAs, is defined by biallelic inactivating mutations in *HNF1A* (on chromosome 12q), which encodes hepatocyte nuclear factor 1 α [7,8]. Hepatocyte nuclear factor 1 α belongs to the hepatocyte nuclear factor family of proteins and is a key transcription factor known to be involved in the control of hepatocyte differentiation as well as glucose and lipid metabolism in the liver [9–11]. *HNF1A*-inactivated HCAs are characterized by marked steatosis, but steatosis can be seen in other subtypes of HCA. Steatosis may also be present in other well-differentiated (WD) hepatocellular lesions (ie, focal nodular hyperplasia and WD HCC) that may be considered in a differential diagnosis with HCA, especially on core biopsy. Further analysis has shown that expression of liver fatty acid binding protein (LFABP), which is normally expressed at high levels within hepatocyte cytoplasm and involved in fatty acid trafficking, is down-regulated in *HNF1A*-inactivated HCAs [8]. This down-regulation of LFABP can be demonstrated by immunohistochemical methods, with loss of hepatocyte staining for LFABP reported in all *HNF1A*-inactivated HCAs [2].

The risk of transformation of HCA to HCC is highest in the β -catenin–mutated subtype of HCAs but was originally described as a rare phenomenon in *HNF1A*-inactivated HCAs [7,12]; thus, the molecular mechanisms of carcinogenesis may be distinct in this scenario. Early studies of LFABP expression in HCC considered LFABP as a potential positive marker of HCC [13]. *FABP1* (the murine homolog of *LFABP*) down-regulation has been demonstrated in a murine model of hepatocellular carcinogenesis [14], and *hnf1a*-deficient mice have been shown to develop liver enlargement associated with increased hepatocyte proliferation, with some cases associated with hepatocyte dysplasia [10,15,16]. However, there has been no systematic study of LFABP staining in HCC. In this study, we evaluated a range of HCC differentiation (well to poorly differentiated) arising in various clinical settings (eg, hepatitis C, steatohepatitis, HCA) for LFABP loss.

2. Materials and methods

2.1. Study population

The cases (n = 20) included in this study (Table 1) were selected from our institutional archives with the goal of selecting cases with a representative mix of background liver disease and with a spectrum of HCC differentiation. Thirteen cases (65%) of HCC arose in a background of cirrhosis due to hepatitis C (n = 8) or steatohepatitis (n = 5). Seven cases (35%) of HCC arose in a noncirrhotic background. Two of these cases (cases 1 and 2) had WD HCCs arising within *HNF1A*-inactivated variant HCAs; 1 case (case 1) had 2 separate HCCs, both arising within separate HCAs. Two other cases had HCC arising within inflammatory variant HCA (cases 3 and 9). Differentiation of HCC ranged from well to poorly differentiated, with a few cases demonstrating 2 distinct regions of differentiation (ie, well to moderately differentiated or moderately to poorly differentiated, as designated)

(Table 2). The diagnosis of HCC was established using a combination of clinical, imaging, and histopathologic findings, including histochemical staining for reticulin, performed on formalin-fixed, paraffin-embedded tissue using standard methodology. This research was approved by the University of California, San Francisco, Institutional Review Board.

2.2. Immunohistochemical staining

Immunohistochemical staining for LFABP (rabbit polyclonal antibody, 1:50 dilution; Abcam, Cambridge, United Kingdom) was performed on formalin-fixed, paraffin-embedded tissue using standard methodology on the Leica BOND platform (Leica Biosystems, Nussloch, Germany), with appropriate positive and negative controls. Only complete loss of staining for LFABP throughout the tumor was considered negative (Table 2, “-”); all other staining intensities and patterns were considered positive (Table 2, “+”).

3. Results

Overall, 6 of 20 HCCs demonstrated complete loss of staining for LFABP (6/20, 30%). The LFABP staining intensity and pattern in HCC varied from complete loss of staining throughout the tumor, to patchy loss, to weak patchy staining, to diffusely strong positive staining. Only complete loss of staining for LFABP throughout the tumor was considered negative (summarized in Table 2). Of the WD HCC cases (n = 9), 2 cases showed complete loss of staining for LFABP (cases 1 and 2). In case 1, 2 WD HCCs were observed, both arising in separate *HNFI*A-inactivated HCAs; both WD HCCs in this case showed complete loss of staining for LFABP (Fig. 1). Of note, this patient’s partial hepatectomy specimen contained a third nodule, which was also an *HNFI*A-inactivated HCA, without associated HCC. In case 2, 1 WD HCC was seen, arising in an *HNFI*A-inactivated HCA, with complete loss of staining for LFABP in both the HCC and HCA regions. The remainder of the WD HCCs showed intact staining for LFABP (eg, case 4 in Fig. 2A and B). Complete loss of LFABP staining was also demonstrated in 1 of 2 well to moderately differentiated HCC (case 11, Fig. 2C and D), 1 of 5 moderately differentiated HCC (case 16, Fig. 2E and F), and 2 of 3 poorly differentiated HCC (eg, case 20, Fig. 2G and H). Focal variable LFABP loss (overall considered positive/intact) was noted in moderately to poorly differentiated HCC (n = 1 of 1 moderately to poorly differentiated HCC; case 17, Fig. 2I and J).

4. Discussion

Recent studies have shed light on the diagnosis and subclassification of HCAs, providing practical tools, particularly immunohistochemistry, that may be used in the daily practice of surgical pathology. HCA subclassification aids clinical decision making, as it provides a means to stratify HCA cases by risk of transformation to HCC. The risk of transformation is thought to be greatest for those HCA harboring β -catenin mutations [7]. In addition to the β -catenin-mutated variant of HCA, some cases of inflammatory variant HCA have also been shown to harbor mutations in β -catenin [17]. In contrast, the risk of transformation to HCC is thought to be exceedingly low for *HNFI*A-inactivated HCA, although previous molecular studies have reported biallelic inactivation of *HNFI*A in rare WD HCC [3]. In our study, 22% of WD HCC (2/9) showed loss of staining for LFABP. Both of these cases are of

particular note as they represent examples of WD HCC arising within *HNFI*A-inactivated HCAs.

Although loss of staining for LFABP is thought to be a highly sensitive and specific finding in *HNFI*A-inactivated HCAs, our study also shows that LFABP loss is commonly seen in HCC, even outside the setting of preexisting *HNFI*A-inactivated HCAs (4/18). Our findings thus highlight the potential pitfall of using LFABP immunohistochemistry as the sole means of diagnosing a lesion as *HNFI*A-inactivated HCA. As seen in this study, loss of staining for LFABP can be seen in WD HCCs. Therefore, LFABP loss should not be interpreted as evidence of HCA over HCC when other features support a diagnosis of HCC. In addition, as others have reported [18], interpretation of LFABP staining can be problematic, especially in the absence of background liver for comparison and when LFABP staining intensity is weak. For example, case 14 shows very weak staining for LFABP in moderately differentiated HCC (Fig. 3), which can only be interpreted in comparison to background uninvolved liver parenchyma, which, in such cases, not uncommonly also shows weak staining for LFABP.

Given that a greater proportion of moderately and poorly differentiated HCC showed complete loss of LFABP (Table 2), it is possible that LFABP loss may be associated with these morphologic changes and thus may represent a pathway involved in HCC differentiation/carcinogenesis, as well as in variant HCA tumorigenesis. It should be noted that, in previous reports, β -catenin-inactivating mutations appeared “exclusive of *HNFI*A mutations,” although they could be found in combination with *GPI30* or *GNAS* mutations seen in the inflammatory variant of HCA [4]. Further investigation is needed to understand the biologic significance of focal loss of LFABP staining in hepatocellular neoplasms.

Abbreviations

HCA	hepatocellular adenoma
HCC	hepatocellular carcinoma
LFABP	liver fatty acid binding protein
WD	well differentiated

References

1. Bioulac-Sage P, Laurent-Puig P, Balabaud C, Zucman-Rossi J. Genetic alterations in hepatocellular adenomas. *Hepatology*. 2003; 37:480. author reply 480–481. [PubMed: 12540806]
2. Bioulac-Sage P, Rebouissou S, Thomas C, et al. Hepatocellular adenoma subtype classification using molecular markers and immunohistochemistry. *Hepatology*. 2007; 46:740–8. [PubMed: 17663417]
3. Bluteau O, Jeannot E, Bioulac-Sage P, et al. Bi-allelic inactivation of TCF1 in hepatic adenomas. *Nat Genet*. 2002; 32:312–5. [PubMed: 12355088]
4. Nault JC, Bioulac-Sage P, Zucman-Rossi J. Hepatocellular benign tumors—from molecular classification to personalized clinical care. *Gastroenterology*. 2013; 144:888–902. [PubMed: 23485860]
5. Nault JC, Zucman Rossi J. Molecular classification of hepatocellular adenomas. *Int J Hepatol*. 2013; 2013:315947. [PubMed: 23401783]

6. Zucman-Rossi J. Genetic alterations in hepatocellular adenomas: recent findings and new challenges. *J Hepatol.* 2004; 40:1036–9. [PubMed: 15158349]
7. Zucman-Rossi J, Jeannot E, Nhieu JT, et al. Genotype-phenotype correlation in hepatocellular adenoma: new classification and relationship with HCC. *Hepatology.* 2006; 43:515–24. [PubMed: 16496320]
8. Pelletier L, Rebouissou S, Paris A, et al. Loss of hepatocyte nuclear factor 1alpha function in human hepatocellular adenomas leads to aberrant activation of signaling pathways involved in tumorigenesis. *Hepatology.* 2010; 51:557–66. [PubMed: 20041408]
9. Rebouissou S, Imbeaud S, Balabaud C, et al. HNF1alpha inactivation promotes lipogenesis in human hepatocellular adenoma independently of SREBP-1 and carbohydrate-response element-binding protein (ChREBP) activation. *J Biol Chem.* 2007; 282:14437–46. [PubMed: 17379603]
10. Servitja JM, Pignatelli M, Maestro MA, et al. Hnf1alpha (MODY3) controls tissue-specific transcriptional programs and exerts opposed effects on cell growth in pancreatic islets and liver. *Mol Cell Biol.* 2009; 29:2945–59. [PubMed: 19289501]
11. Pelletier L, Rebouissou S, Vignjevic D, Bioulac-Sage P, Zucman-Rossi J. HNF1alpha inhibition triggers epithelial-mesenchymal transition in human liver cancer cell lines. *BMC Cancer.* 2011; 11:427. [PubMed: 21975049]
12. Bioulac-Sage P, Laumonier H, Sa Cunha A, Balabaud C. Hepatocellular adenomas. *Liver Int.* 2009; 29:142. [PubMed: 18828785]
13. Suzuki T, Watanabe K, Ono T. Immunohistochemical demonstration of liver fatty acid-binding protein in human hepatocellular malignancies. *J Pathol.* 1990; 161:79–83. [PubMed: 2164578]
14. Elchuri S, Naeemuddin M, Sharpe O, Robinson WH, Huang TT. Identification of biomarkers associated with the development of hepatocellular carcinoma in CuZn superoxide dismutase deficient mice. *Proteomics.* 2007; 7:2121–9. [PubMed: 17514684]
15. Pontoglio M, Barra J, Hadchouel M, et al. Hepatocyte nuclear factor 1 inactivation results in hepatic dysfunction, phenylketonuria, and renal Fanconi syndrome. *Cell.* 1996; 84:575–85. [PubMed: 8598044]
16. Lee YH, Sauer B, Gonzalez FJ. Laron dwarfism and non-insulin-dependent diabetes mellitus in the Hnf-1alpha knockout mouse. *Mol Cell Biol.* 1998; 18:3059–68. [PubMed: 9566924]
17. Pilati C, Letouze E, Nault JC, et al. Genomic profiling of hepatocellular adenomas reveals recurrent FRK-activating mutations and the mechanisms of malignant transformation. *Cancer Cell.* 2014; 25:428–41. [PubMed: 24735922]
18. Bioulac-Sage P, Cubel G, Balabaud C, Zucman-Rossi J. Revisiting the pathology of resected benign hepatocellular nodules using new immunohistochemical markers. *Semin Liver Dis.* 2011; 31:91–103. [PubMed: 21344354]

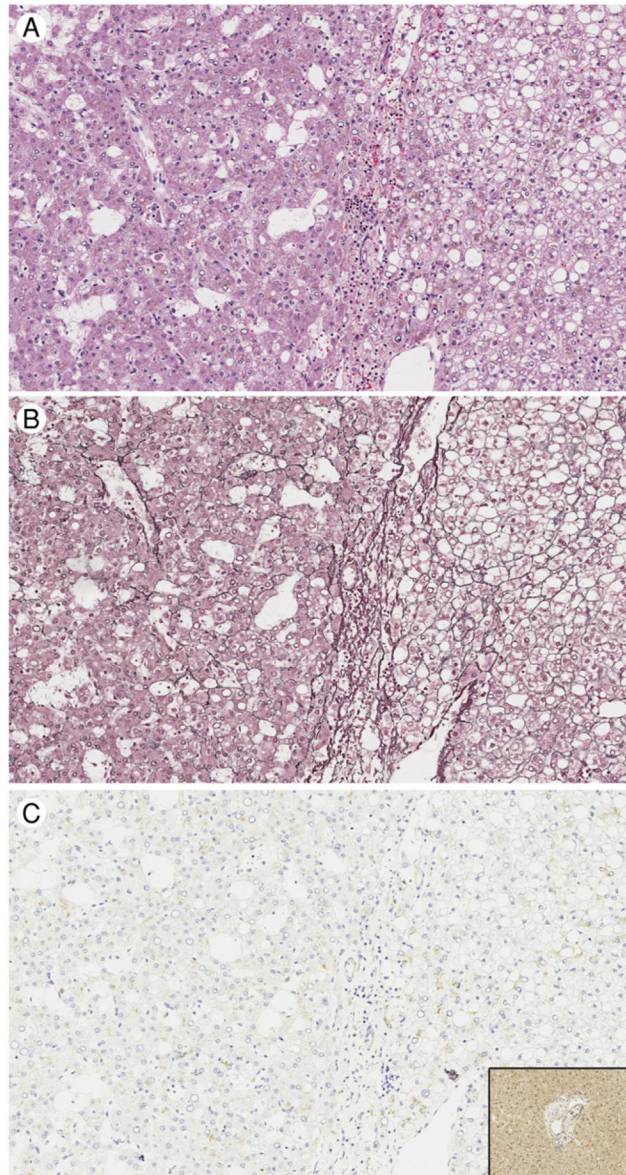


Fig. 1. Case 1: Well-differentiated hepatocellular carcinoma (HCC) arising in *HNFI*A-inactivated variant hepatocellular adenoma (HCA). A, The right-hand portion of each panel shows the *HNFI*A-inactivated HCA portion of the tumor, whereas the left-hand portion of each panel shows the HCC portion of the tumor, hematoxylin and eosin, original magnification $\times 200$. B, Loss of staining for reticulin is seen in the HCC component (left), $\times 200$. C, Complete loss of staining for LFABP is seen in both components, compared to the intact staining seen in the background uninvolved liver parenchyma (inset), $\times 200$.

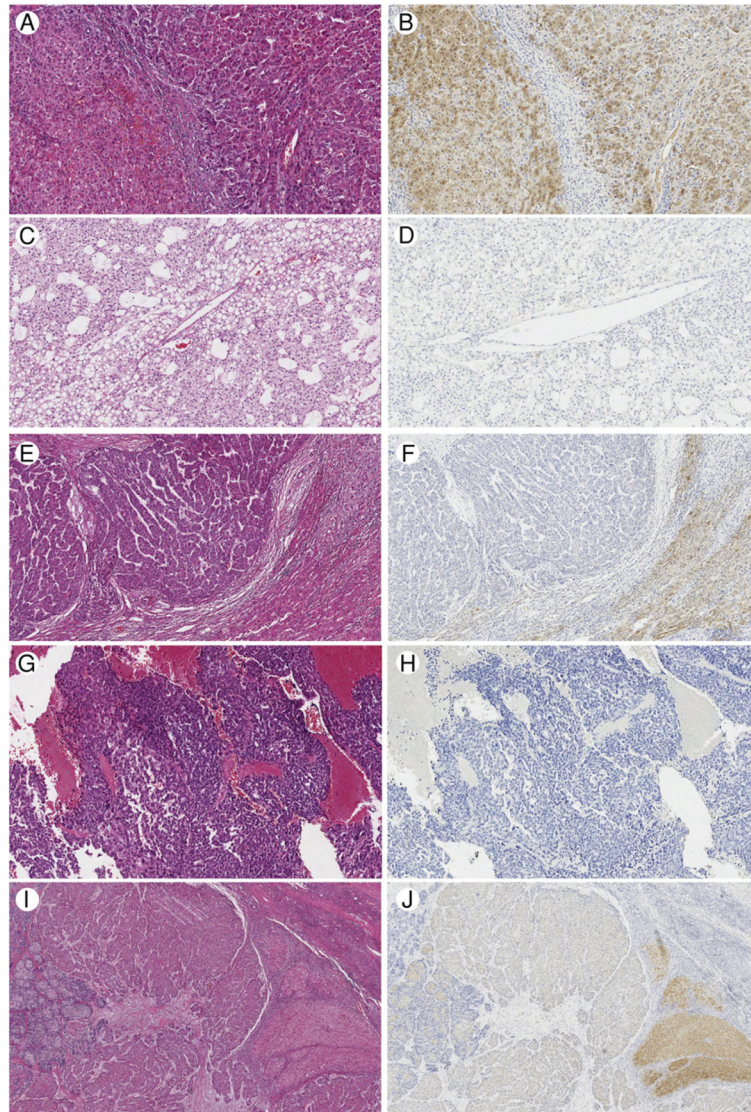


Fig. 2. Spectrum of LFABP staining. A, Case 4, uninvolved hepatic parenchyma on left with well-differentiated hepatocellular carcinoma (HCC) on right, hematoxylin and eosin (H&E), $\times 100$. B, Case 4, diffuse, strong LFABP staining in uninvolved hepatic parenchyma and HCC, $\times 100$. C, Case 11, representative area of well to moderately differentiated HCC, H&E, $\times 100$. D, Case 11, complete loss of LFABP staining, $\times 100$. E, Case 16, moderately differentiated HCC on left, uninvolved hepatic parenchyma on right, H&E, $\times 100$. F, Case 16, complete loss of LFABP staining in HCC with diffuse, strong LFABP staining in uninvolved hepatic parenchyma, $\times 100$. G, Case 20, representative area of poorly differentiated HCC, H&E, $\times 100$. H, Case 20, complete loss of LFABP staining, $\times 100$. I, Case 17, Moderately to poorly differentiated HCC, H&E, $\times 40$. J, Case 17, patchy, variably intense LFABP staining, $\times 40$. A small portion of uninvolved hepatic parenchyma is seen at the right, with the most intense staining for LFABP.

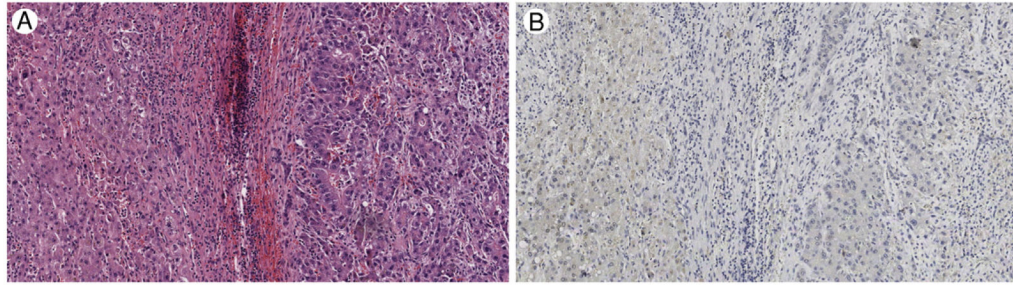


Fig. 3. Moderately differentiated hepatocellular carcinoma (HCC), case 14. A, Uninvolved hepatic parenchyma on left with HCC on right, hematoxylin and eosin, $\times 100$. B, Both the HCC and uninvolved hepatic parenchyma show diffuse, but weak, LFABP staining, $\times 100$.

Table 1

Cases selected for study

Case	Age	Sex	Cirrhosis	Background liver disease
1	65	F	No	Multiple <i>HNF1A</i> -inactivated HCAs
2	19	F	No	Multiple <i>HNF1A</i> -inactivated HCAs
3	29	F	No	Inflammatory HCA
4	67	F	Yes	Hepatitis C
5	61	M	Yes	Steatohepatitis
6	48	M	Yes	Steatohepatitis
7	53	M	Yes	Hepatitis C
8	56	M	Yes	Hepatitis C
9	40	F	No	Inflammatory HCA
10	36	M	No	Mild steatosis
11	65	F	No	None
12	59	M	No	None
13	52	M	Yes	Hepatitis C
14	68	F	Yes	Steatohepatitis
15	59	F	Yes	Steatohepatitis
16	59	M	Yes	Hepatitis C
17	48	M	Yes	Hepatitis C
18	71	M	Yes	Steatohepatitis
19	53	M	Yes	Hepatitis C
20	59	F	Yes	Hepatitis C

Abbreviations: HCA, hepatocellular adenoma; F, female; M, male.

Table 2

LFABP expression in hepatocellular carcinoma

Case	Degree of HCC differentiation	LFABP expression
1	WD	-
2	WD	-
3	WD	+
4	WD	+
5	WD	+
6	WD	+
7	WD	+
8	WD	+
9	WD	+
10	WD-MD	+
11	WD-MD	-
12	MD	+
13	MD	+
14	MD	+
15	MD	+
16	MD	-
17	MD-PD	+
18	PD	+
19	PD	-
20	PD	-

Abbreviations: HCC, hepatocellular carcinoma; LFABP, liver fatty acid binding protein; WD, well differentiated; MD, moderately differentiated; PD, poorly differentiated.

Author Manuscript

Author Manuscript

Author Manuscript

Author Manuscript