

UC Berkeley

UC Berkeley Previously Published Works

Title

Acute Gastroenteritis and Recreational Water: Highest Burden Among Young US Children

Permalink

<https://escholarship.org/uc/item/1721r9wq>

Journal

American Journal of Public Health, 106(9)

Author

Arnold, Benjamin F

Publication Date

2016

Data Availability

The data associated with this publication are available upon request.

Peer reviewed

Acute Gastroenteritis and Recreational Water: Highest Burden Among Young US Children

Benjamin F. Arnold, PhD, MPH, Timothy J. Wade, PhD, MPH, Jade Benjamin-Chung, PhD, MPH, Kenneth C. Schiff, MA, John F. Griffith, PhD, Alfred P. Dufour, PhD, Stephen B. Weisberg, PhD, and John M. Colford, Jr, MD, PhD, MPH

Objectives. To provide summary estimates of gastroenteritis risks and illness burden associated with recreational water exposure and determine whether children have higher risks and burden.

Methods. We combined individual participant data from 13 prospective cohorts at marine and freshwater beaches throughout the United States ($n = 84\,411$). We measured incident outcomes within 10 days of exposure: diarrhea, gastrointestinal illness, missed daily activity (work, school, vacation), and medical visits. We estimated the relationship between outcomes and 2 exposures: body immersion swimming and *Enterococcus* spp. fecal indicator bacteria levels in the water. We also estimated the population-attributable risk associated with these exposures.

Results. Water exposure accounted for 21% of diarrhea episodes and 9% of missed daily activities but was unassociated with gastroenteritis leading to medical consultation. Children aged 0 to 4 and 5 to 10 years had the most water exposure, exhibited stronger associations between levels of water quality and illness, and accounted for the largest attributable illness burden.

Conclusions. The higher gastroenteritis risk and associated burden in young children presents important new information to inform future recreational water quality guidelines designed to protect public health. (*Am J Public Health*. 2016;106:1690–1697. doi:10.2105/AJPH.2016.303279)

Each year there are an estimated 2.2 billion tourist day visits to freshwater and marine beaches in the United States.¹ To minimize illness associated with swimming in contaminated water, the US Environmental Protection Agency (EPA) and the World Health Organization publish beach-monitoring guidelines on the basis of *Enterococcus* spp. fecal indicator bacteria levels.^{2,3} Elevated *Enterococcus* levels in recreational waters can indicate potential contamination with fecal waste from sewage or other sources and can be associated with pathogens such as norovirus, *Campylobacter* spp., *Salmonella* spp., *Cryptosporidium* spp., and *Giardia* spp. Recent waterbody closures at Brazilian Olympic venues⁴ and Waikiki beach, Hawaii⁵ illustrate recreational water contamination's public health and economic reach.

Several cohort studies and randomized trials have measured swimming-related health

risks and risks associated with exposure to waters containing elevated fecal indicator bacteria levels,^{6–17} but individual studies are usually too small to estimate the public health burden associated with water exposure with respect to missed daily activities (work, school, vacation) or medical visits and hospitalizations that result from gastroenteritis. Moreover, individual studies have not typically enrolled enough swimmers to estimate risks separately for children. Children are hypothesized to have a higher risk of

swimming-related gastroenteritis than are adults because they spend more time in the water, are more likely to swallow water (the primary mechanism of pathogen exposure), and have less developed immune systems.^{8,18–20} The EPA and the World Health Organization acknowledge that children could be at higher risk than is the general population but note that evidence for higher risks among children has been inconclusive when viewed across diverse environmental settings such as marine water and freshwater.^{2,21}

We conducted a pooled analysis of 13 prospective cohorts in the United States (84 411 participants).^{7–14} We coordinated studies to ensure similar designs and measurement methods. This approach enabled us to calculate summary estimates for gastroenteritis risk and related medical and daily activity impacts associated with recreational water exposure and *Enterococcus* levels; it also enabled us to report for the first time, to our knowledge, separate estimates for children aged 0 to 4 and 5 to 10 years. We had 3 objectives: (1) estimate the risk of diarrhea among beachgoers associated with recreational water exposure, (2) estimate the risk of diarrhea among swimmers associated with *Enterococcus* levels measured in the water, and (3) estimate the illness burden attributable to recreational water exposure and exposure above regulatory guidelines for the following outcomes: diarrhea, gastrointestinal illness, missed daily activities

ABOUT THE AUTHORS

Benjamin F. Arnold, Jade Benjamin-Chung, and John M. Colford Jr are with the Division of Epidemiology, School of Public Health, University of California, Berkeley. Timothy J. Wade is with the US Environmental Protection Agency (EPA), National Health and Environmental Effects Research Laboratory, Research Triangle Park, NC. Kenneth C. Schiff, John F. Griffith, and Stephen B. Weisberg are with the Southern California Coastal Water Research Project, Costa Mesa, CA. Alfred P. Dufour is with the US EPA, National Exposure Research Laboratory, Cincinnati, OH.

Correspondence should be sent to Benjamin F. Arnold, PhD, MPH, Division of Epidemiology, School of Public Health, 101 Haviland Hall, MC #7358, University of California, Berkeley, Berkeley, CA 94720-7358 (e-mail: benarnold@berkeley.edu). Reprints can be ordered at <http://www.ajph.org> by clicking the "Reprints" link.

This article was accepted May 17, 2016.

doi: 10.2105/AJPH.2016.303279

(work, school, vacation) owing to gastrointestinal illness, and medical consultations owing to gastrointestinal illness.

METHODS

Individual studies took place between 2003 and 2009 and have been described in detail elsewhere.^{7–14} The beaches represented a range of recreational water conditions across the United States: 4 freshwater beaches were in the Great Lakes region, 4 marine beaches were in Southern California, and the remaining 5 marine beaches were spread along the Gulf Coast, Eastern Seaboard, and Puerto Rico. Nine of the beaches were located near a known source of treated sewage discharge (referred to as “point source”—affected beaches), and the remaining 4 beaches had more diffuse contamination from urban runoff (details are available in Appendix A, available as a supplement to the online version of this article at <http://www.ajph.org>).

Studies enrolled beachgoers between May and September, typically on weekends. Interviewers approached people on the beach and enrolled all members of a household who were present and provided consent. Individuals were excluded from participating if they had enrolled in the study in the previous month, if no adult household member was present, or if they did not speak English or Spanish. California cohorts excluded individuals if they were not citizens of the United States, Mexico, or Canada to facilitate follow-up. Participants completed a short survey when leaving the beach to report swim exposure. Interviewers called participants 10 to 14 days after the beach visit to assess outcomes; a knowledgeable member from each household reported the timing and details of illness symptoms for all household participants.

Exposure Definition

We considered 2 types of exposure. First, we determined whether individuals entered the water and, if so, their level of water contact. Consistent with previous studies,^{7–14} we used graded exposure levels: body immersion swimming (waist depth or greater), head immersion, and swallowed water. The

categories were not exclusive; for example, individuals who swallowed water may have been body immersion swimmers. We classified individuals with no reported water contact as nonswimmers.

Second, studies collected water samples from multiple locations at each beach and at multiple times during the day concurrent with participant enrollment. We estimated *Enterococcus* levels in each sample using a culture-based method, EPA 1600,²² or at 1 beach Enterolert (IDEXX, Westbrook, ME). We also tested water samples for *Enterococcus* using a quantitative polymerase chain reaction (qPCR) method (EPA 1611).²³ The analysis used daily mean log₁₀ *Enterococcus* per 100 milliliters, averaged over all sampling locations and times (for 3 beaches we used swimmer beach location to assign water quality measurements; Appendix A). We classified *Enterococcus* exposure in 2 ways: we used quartiles of *Enterococcus* to assess the relationship between water quality and swimmer diarrhea, and we used a dichotomous measure indicating whether water conditions exceeded EPA regulatory guidelines. For culture methods this was greater than 35 colony-forming units per 100 milliliters, and for qPCR this was greater than 470 calibrator cell equivalents per 100 milliliters.² Our prespecified primary analysis focused on culture method regulatory guidelines, and we included qPCR results in supporting information.

Outcomes

The primary outcome was incident diarrhea, defined as 3 or more loose or watery stools in 24 hours.²⁴ We did not consider individuals who reported an episode of diarrhea or vomiting in the 3 days before enrollment at risk. Secondary outcomes for attributable risk calculations included incident gastrointestinal illness, defined consistently with previous studies^{10–13} as (1) diarrhea, (2) vomiting, (3) nausea and stomachache, or (4) nausea or stomachache and missed regular activities as a result of illness; days of missed work, school, or vacation owing to any gastrointestinal illness; days of missed paid work owing to gastrointestinal illness; and medical consultations associated with gastrointestinal illness, including telephone consultations,

inpatient or outpatient care, and emergency room visits.

For days of missed work, school, or vacation, we included days missed by individuals aged 13 years or older who were caring for other family members even if they were not ill themselves. Participants reported the outcomes during the telephone interview 10 to 14 days following the beach visit. We included incident outcomes in the 10 days following the beach visit.

Statistical Analysis

The study protocol and analysis plan prespecified all choices about exposures, outcomes, effect modifiers, and analysis methods (data are available in the Supplemental Protocol, available as a supplement to the online version of this article at <http://www.ajph.org>; Open Science Framework registration <https://osf.io/i3742>). Analyses treated beaches as a fixed effect to derive summary estimates across the 13 cohorts.²⁵ We estimated cumulative incidence ratios (CIRs) using log-linear models with robust SEs clustered at the household level.²⁶ Adjusted models controlled for the following characteristics: age, gender, race, reported chronic gastrointestinal problems at enrollment (irritable bowel syndrome, ulcerative colitis), contact with animals, contact with gastrointestinal illness in the 3 days before enrollment, and consumption of undercooked or raw eggs, meat, or fish in the 3 days before enrollment or at any time during follow-up.

We prespecified the following age categories to examine effect modification: aged 0 to 4, 5 to 10, and older than 10 years. Our rationale was that the intensity of water exposure (time in the water and ingestion of water) was different in these 3 age groups, which would translate into different health risks. We also assessed effect modification by water type (fresh vs marine) and pollution type (nearby source of treated human sewage “point source” vs nonpoint source). We have reported stratified results if there was effect modification on additive or multiplicative scales ($P < .2$).²⁷ We did not analyze individuals enrolled at beaches that were not measured at follow-up (assumed missing completely at random). Earlier analyses of the cohorts demonstrated that participants

lost to follow-up were similar to those who completed follow-up.⁷⁻¹⁴

Diarrhea associated with water exposure and *Enterococcus* levels. We estimated the CIR associated with water exposure by comparing diarrhea incidence among swimmers with different levels of water exposure (body immersion, head immersion, swallowed water) with incidence among nonswimmers. We estimated the CIR associated with *Enterococcus* levels in the water by comparing diarrhea incidence among body immersion swimmers exposed to *Enterococcus* quartiles 2 to 4 with that in quartile 1. We estimated the CIR associated with swimming exposure above regulatory guidelines by comparing diarrhea incidence among swimmers who were exposed above the guideline (>35 colony-forming units per 100 ml) with that of nonswimmers and with that of swimmers exposed below the guideline.

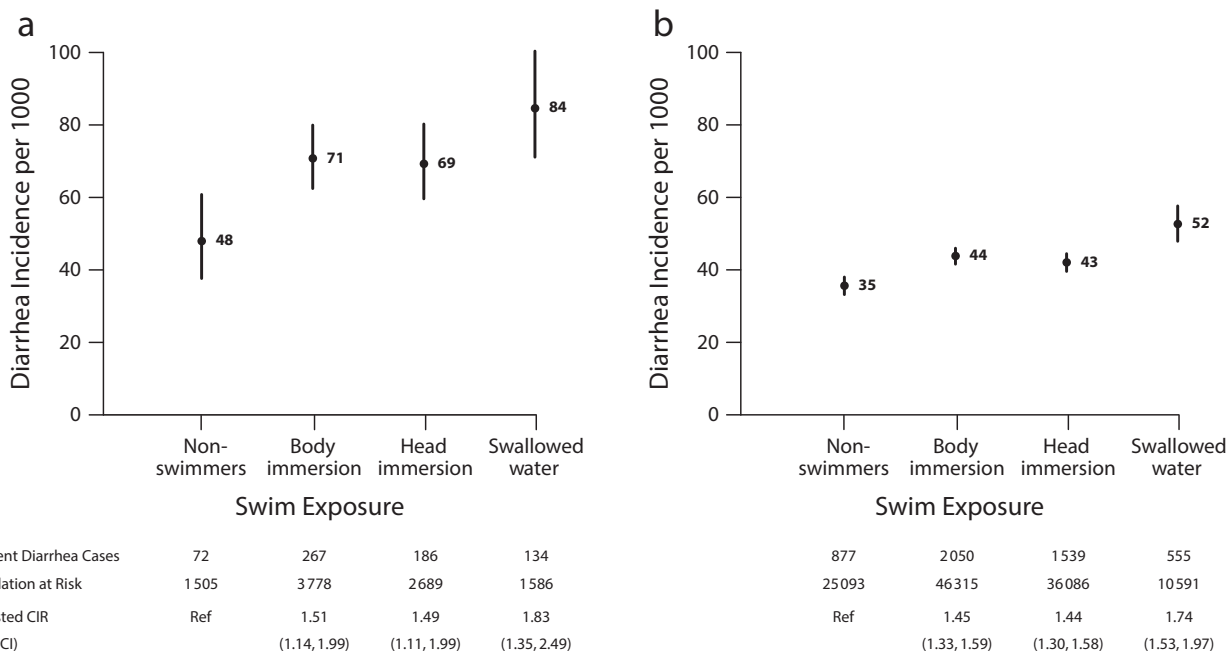
Population-attributable risk and attributable fraction. The population-attributable risk (PAR) represents cases that would be prevented if an exposure were removed. In this study it measures the attributable illness

burden in the beachgoer population.²⁸

We estimated the PAR for any water exposure to measure the overall burden of recreational swimming. We estimated a second PAR, assuming no beachgoer swam in water that exceeded the EPA guideline (*Enterococcus* >35 colony-forming units per 100 ml), to measure the burden associated with swim exposure above EPA guidelines. We estimated adjusted PARs using predicted outcome probabilities from log-linear models under the observed exposure and covariate distribution and under the counterfactual scenarios, where $PAR = Pr(\text{disease}) - Pr(\text{disease} | \text{no exposure})$.²⁸ We calculated the population-attributable fraction by dividing the PAR by the baseline risk, which represents the percentage of cases that would be prevented if the exposure were removed. We calculated percentile-based 95% confidence intervals (CIs) for PARs and population-attributable fractions using a nonparametric, clustered bootstrap (1000 iterations) that resampled households with replacement, stratified by beach.²⁹

RESULTS

The 13 cohorts comprised 102 903 beachgoers, of whom 84 411 (82%) completed a follow-up survey and were analyzed. The analysis population included 6580 children aged 0 to 4 years, 10 822 children aged 5 to 10 years, and 65 854 people older than 10 years (n = 1155; 1.4% missing age). More children aged 5 to 10 years immersed their body in water (81%) than did those aged 0 to 4 years (59%) and those older than 10 years (52%), and they spent more time in the water (median = 2 hours compared with 1 hour in other age groups). Swallowing water was more common among children aged 0 to 4 (25%) and 5 to 10 (28%) years than among older beachgoers (9%). A minority of body immersion swimmers at risk for gastroenteritis were exposed to water that exceeded EPA regulatory guidelines for *Enterococcus* (13% [5870/46 069] using culture methods; 3% [1355/44 857] using qPCR methods). Among 82 463 individuals at risk for gastrointestinal illness, there were 3409 incident diarrhea cases during the 10-day follow-up period (detailed population characteristics



Note. CI = confidence interval; CIR = cumulative incidence ratios. We estimated adjusted CIRs with nonswimmers as the reference group.

FIGURE 1—Incident Diarrhea Associated With Water Exposure for (a) Children Aged 0–4 Years and (b) All Ages: Estimates From a Pooled Analysis of 13 US Prospective Cohorts, 2003–2009

and exposure summaries are available in Appendix A).

Incident Diarrhea Associated With Water Exposure and *Enterococcus*

Compared with nonswimmers, diarrhea incidence increased for individuals with body or head immersion and further increased among individuals who swallowed water; children aged 0 to 4 years had the highest incidence of any age group (Figure 1; an extended version of Figure 1 is available in Appendix C, as a supplement to the online version of this article at <http://www.ajph.org> as). There was low to moderate heterogeneity across beaches (Appendix B, available as a supplement to the online version of this article at <http://www.ajph.org>). Body immersion swimming was more strongly associated with diarrhea at freshwater beaches (adjusted CIR = 1.70; 95% CI = 1.45, 1.99) than at marine beaches (adjusted CIR = 1.35; 95% CI = 1.21, 1.51; effect modification $P = .004$ [additive]; $P = .05$ [multiplicative]; Appendix B). *Enterococcus* levels were positively associated with diarrhea risk within age

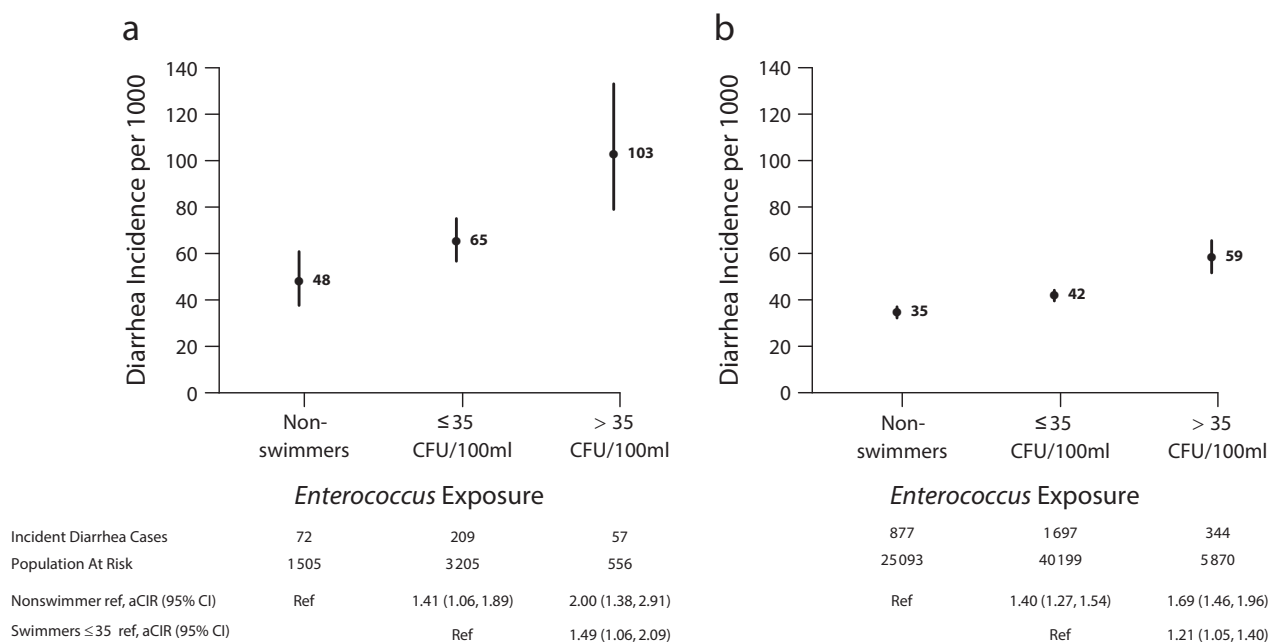
strata, with the largest absolute increases in risk among children aged 0 to 4 years (effect modification $P = .02$ [additive]; $P = .08$ [multiplicative]; Figure 2; an extended version of Figure 2 is available in Appendix C).

Swimmers exposed to *Enterococcus* levels above EPA guidelines had higher diarrhea incidence than did nonswimmers and swimmers exposed below the guideline in all age groups. Children aged 0 to 4 years exposed to water above regulatory guidelines experienced 103 episodes per 1000 compared with 48 episodes per 1000 among nonswimmers (adjusted CIR = 2.00; 95% CI = 1.38, 2.91; Figure 2). Swim exposure above the regulatory guideline increased diarrhea incidence only at beaches with a known point source of human fecal pollution (effect modification $P = .09$ [additive]; $P = .16$ [multiplicative]; Appendix C). The relationships between culture- and qPCR-based measures of *Enterococcus* and incident diarrhea episodes were similar and showed increased diarrhea risk at higher quartiles of *Enterococcus* levels (i.e., no clear risk threshold; Appendix C).

The exposure-response relationship was more consistently monotonic for *Enterococcus* measured using qPCR methods versus culture methods across different analyses, even when restricted to beaches without a known point source of pollution (Appendix C). The relationships between swim exposure, *Enterococcus* exposure, and more broadly defined gastrointestinal illness were very similar to diarrhea (Appendix D, available as a supplement to the online version of this article at <http://www.ajph.org>). Negative control analyses^{30,31} showed no association between *Enterococcus* levels and diarrhea incidence among nonswimmers, and sensitivity analyses showed that the results were robust to different definitions of exposure, modeling approach, and lengths of follow-up (Appendix E, available as a supplement to the online version of this article at <http://www.ajph.org>).

Estimates of Attributable Illness Burden

Among beachgoers, 8.6 diarrhea episodes per 1000 (21% of all episodes) and 4.9 days of missed activities (work, school, or vacation)



Note. aCIR = adjusted cumulative incidence ratios; CFU = colony-forming units; CI = confidence interval. We estimated aCIRs using 2 reference groups: nonswimmers and swimmers exposed below Environmental Protection Agency regulatory guidelines for *Enterococcus*: > 35 CFU/100 ml.

FIGURE 2—Incident Diarrhea Among Beachgoers Associated with *Enterococcus* Levels Above and Below Regulatory Guidelines for (a) Children Aged 0–4 Years and (b) All Ages: Estimates From a Pooled Analysis of 13 US Prospective Cohorts, 2003–2009

TABLE 1—Population-Attributable Risk Among Beachgoers Owing to Body Immersion Swimming: Estimates From a Pooled Analysis of 13 US Prospective Cohorts, 2003–2009

Outcome	No. Events	No. at Risk	Predicted Incidence, ^a per 1000		Population-Attributable Risk ^b (95% CI)	Population-Attributable Fraction, ^c % (95% CI)
			Observed Exposure	No Swim Exposure		
Diarrhea, episodes						
All ages	3409	82 463	41	33	8.6 (6.6, 10.6)	21 (16, 25)
Age stratified, y						
0–4	398	6394	62	48	14.7 (3.8, 25.3)	23 (6, 40)
5–10	393	10 633	37	20	16.9 (7.3, 26.1)	46 (20, 69)
> 10	2585	64 295	40	33	6.9 (4.8, 8.9)	17 (12, 22)
Gastrointestinal illness,^d episodes						
All ages	5024	82 463	61	52	9.2 (6.6, 11.8)	15 (11, 19)
Age stratified, y						
0–4	562	6394	88	66	22.4 (9.9, 34.8)	25 (12, 40)
5–10	697	10 633	66	54	11.8 (–2.6, 24.7)	18 (–4, 37)
> 10	3716	64 295	58	50	7.8 (5.4, 10.1)	14 (9, 17)
Missed daily activities,^e days						
All ages	4551	82 463	55	50	4.9 (0.4, 9.2)	9 (1, 17)
Age stratified, y						
0–4	445	6394	70	43	27.1 (7.7, 44.5)	39 (12, 61)
5–10	691	10 633	65	58	7.2 (–17.0, 29.6)	11 (–26, 45)
> 10	3377	64 295	53	48	4.3 (0.1, 8.9)	8 (0, 17)
Missed paid work,^f days						
All ages ^{g,h}	1051	82 463	13	13	–0.6 (–2.8, 1.3)	NA
Medical visits, events						
All ages ^{g,h}	915	82 463	11	11	0.4 (–1.3, 2.1)	4 (–12, 18)

Note. CI = confidence interval; NA = not applicable (owing to negative attributable risk estimate).

^aPredicted incidence per 1000 among all beachgoers under the empirical distribution of swim exposure (observed) and under a counterfactual scenario in which nobody entered the water. Estimates are from a multivariable regression model adjusted for a range of potential confounders and beach-level fixed effects.

^bPopulation-attributable risk is the number of events per 1000 beachgoers that would be prevented if swimming exposure were removed from the population. The proportion exposed to body immersion swimming was all ages (56%), 0–4 years (59%), 5–10 years (81%), > 10 years (52%).

^cPopulation-attributable fraction is the percentage of events among beachgoers attributable to body immersion swimming.

^dGastrointestinal illness was defined as (1) diarrhea, (2) vomiting, (3) stomach cramps and missed daily activities, or (4) nausea and missed daily activities.

^eIncludes days of school, work, or vacation missed because of gastrointestinal illness.

^fIncludes work days missed because of gastrointestinal illness.

^gIncludes telephone consultations, outpatient visits, and emergency room visits owing to gastrointestinal illness.

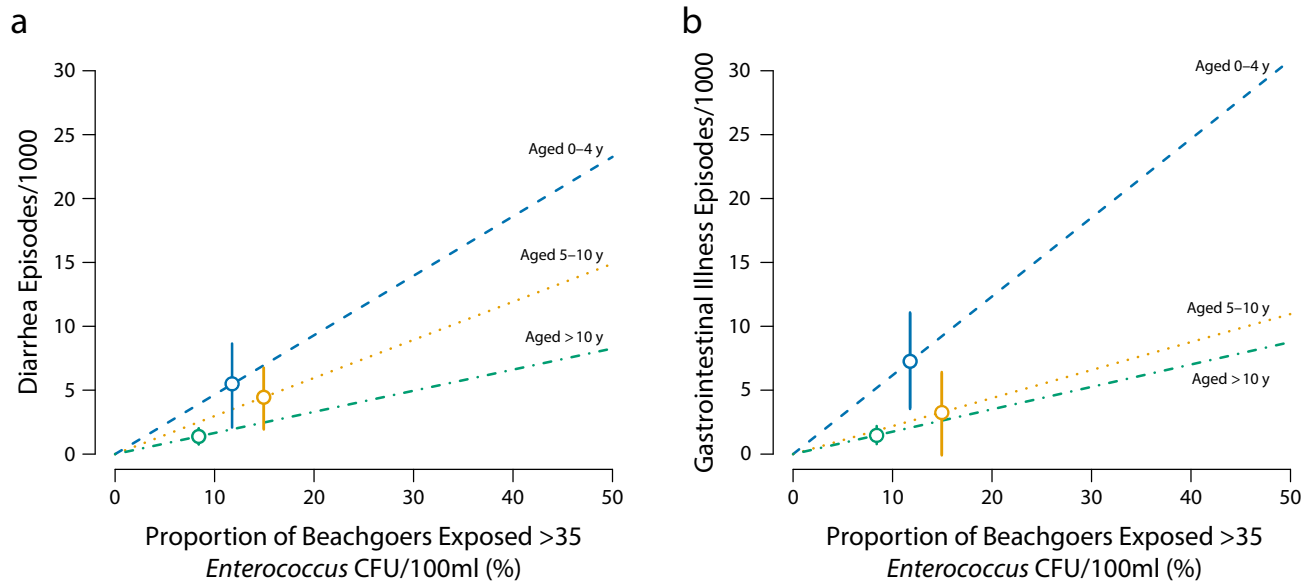
^hOutcome incidence was too rare to calculate age-stratified estimates.

per 1000 (9% of all days missed) were attributable to swimming (Table 1). Removing swim exposure would not reduce cases of gastroenteritis that result in missed paid work or medical consultations. The diarrhea illness burden attributable to swimming among children aged 5 to 10 years was more than double that of those older than 10 years, and children aged 0 to 4 years had higher attributable risks than did those older than 10 years for diarrhea, gastrointestinal illness, and days of missed work, school, or vacation.

For example, the attributable risk for gastrointestinal illness among children aged 0 to 4 years was 22.4 cases per 1000 compared with 7.8 cases per 1000 among individuals older than 10 years (Table 1).

The risk attributable to swimming in water that exceeded EPA *Enterococcus* guidelines was modified by age, with the highest levels of exposure and preventable illness burden among children aged 0 to 4 and 5 to 10 years (Figure 3). The attributable risk for this higher level of exposure was

small and not distinguishable from zero for missed days of paid work and medical consultations (Appendix F, available as a supplement to the online version of this article at <http://www.ajph.org>). The illness burden attributable to swimming in water that exceeded EPA guidelines was low because a minority of beachgoers (10%) were exposed above the guideline (Figure 3) despite a large increase in risk associated with exposure (aged 0–4 years: risk difference = 55 episodes per 1000; aged 5–10 years: 34 per



Note. CFU = colony-forming units. Circles mark the observed levels of exposure and corresponding population-attributable risk estimates with 95% confidence intervals. Dashed lines show adjusted model predictions over a range of exposure levels assuming the same risk relationship within age strata for different proportions exposed.

FIGURE 3—Age-Stratified Attributable Risk Among Beachgoers From Swimming in Water With *Enterococcus* Levels That Exceed Environmental Protection Agency Regulatory Guidelines of *Enterococcus* >35 CFU/100 ml for (a) Diarrhea and (b) Gastrointestinal Illness: Estimates From a Pooled Analysis of 13 US Prospective Cohorts, 2003–2009

1000; older than 10 years: 20 per 1000—comparing swimmers above the guideline vs nonswimmers in Figure 2).

DISCUSSION

Our results provide, to our knowledge, the largest summary of the gastroenteritis risk and related public health burden associated with recreational water exposure in the United States. Increased risk at the highest *Enterococcus* levels supports their use as a monitoring indicator for diarrhea risk among beachgoers, although the association between *Enterococcus* and illness was weaker at beaches without an identified source of human fecal pollution. The higher diarrhea risk among younger children associated with water exposure and larger illness burden attributable to swimming exposure were consistent with longer water contact times and a greater propensity to swallow water. An earlier analysis of this study's freshwater cohorts reported higher swimming-associated gastrointestinal illness risk among children younger than 10 years compared with the overall population,⁸ but our findings provide

evidence for heightened sensitivity among children across a broader set of beach conditions, including marine water and diffuse, “nonpoint” sources of pollution from urban runoff. Our analysis also highlights for the first time, to our knowledge, the largest attributable burden among the youngest children, those aged 0 to 4 years.

The illness burden attributable to swimming was substantial (21% of diarrhea episodes; Table 1). Yet, the burden attributable to swimming in water that exceeded EPA guidelines was smaller (5% of diarrhea episodes; Appendix F) because just 10% of beachgoers were exposed above the guideline. This result illustrates that attaining EPA water quality guidelines is protective of public health. On the basis of the relationships we estimated, the illness burden would be considerably higher if water quality were worse and a higher percentage of beachgoers were exposed above the guideline (Figure 3). Nevertheless, swimmers exposed to low levels of *Enterococcus* had higher diarrhea rates than did nonswimmers (Figure 2), which could result from non-infectious causes of diarrhea associated with swimming (e.g., swallowing excess salt

water), outcome reporting bias, or pathogens present in recreational waters that do not covary with *Enterococcus*.³² Our results suggest that recreational water exposure generally leads to less severe gastroenteritis because episodes leading to a medical consultation were not associated with water exposure (Table 1).

Our study had some limitations. First, we did not randomize beachgoers to swimming exposure, and if healthier individuals were more likely to swim then we could have underestimated the risk associated with swimming. The magnitude of association between swim exposure and diarrhea we estimated was similar to those reported in trials that randomized participants to enter the ocean,^{6,15} so we expect this was not a significant source of bias. Second, we matched daily averages of *Enterococcus* levels to swimmers, which could lead to random error in their exposure and bias estimates toward the null.³³ Third, we measured outcomes using participant report, which could be subject to recall errors or other reporting biases.

The negative control exposure analyses suggested that unmeasured sources of measurement or confounding bias were unlikely

to explain the associations between *Enterococcus* and incident diarrhea (Appendix E). Excess incidence among swimmers occurred mainly within 2 days after exposure (Appendix E), but pathogen-specific outcome measurements would be necessary to make definitive conclusions about etiology. Finally, we limited the analysis to gastroenteritis and related impacts, but extending similar analyses to additional endpoints such as ear infections or eye infections could increase estimates of public health burden.³⁴ These limitations notwithstanding, the large study population, broad range of beach and water conditions, stability of the findings across many sensitivity and negative control analyses, and internal consistency of the results all lend credibility to our findings.

The synthesis of data across 13 cohorts creates many opportunities for research beyond our prespecified objectives. For example, an analysis of the freshwater cohorts included in this study identified beachgoers older than 55 years as a high-risk group for gastroenteritis,⁸ which suggests there could be additional age categories beyond younger children that are more sensitive to exposure than is the general population. A more detailed characterization of swimmer exposure could help inform quantitative microbial risk assessment models,² and more detailed comparisons of risk associated with *Enterococcus* measured by qPCR versus culture methods could inform future regulatory guidelines.

PUBLIC HEALTH IMPLICATIONS

Recreational water exposure was associated with an increased risk of acute gastroenteritis resulting in missed daily activities—but not medical visits—with the highest risk and attributable burden among younger children. Combining information from 13 cohorts enabled us to estimate, for the first time to our knowledge, risk among the youngest children (aged 0–4 and 5–10 years), who had higher levels of exposure (time in the water and swallowed water). We found that 87% of swimmers were exposed to water that met EPA regulatory guidelines on the basis of levels of cultured *Enterococcus*, but if more swimmers were exposed to poor water quality the attributable risk for incident

diarrhea would increase substantially, particularly among children aged 0 to 4 years.

Exposure to water with *Enterococcus* levels above EPA regulatory guidelines was associated with increased diarrhea risk in all age groups at beaches with known point sources of human fecal pollution but not at beaches without an identified pollution source. The higher gastroenteritis risk and associated burden in the youngest children and the absence of an association between *Enterococcus* levels and gastroenteritis risk at beaches with no identified pollution source presents important new information to inform future recreational water quality guidelines designed to protect public health. **AJPH**

CONTRIBUTORS

B. F. Arnold wrote the first draft of the article. B. F. Arnold, T. J. Wade, S. B. Weisberg, and J. M. Colford designed the research. B. F. Arnold, T. J. Wade, K. C. Schiff, J. F. Griffith, A. P. Dufour, S. B. Weisberg, and J. M. Colford conducted the original cohort studies. B. F. Arnold and J. Benjamin-Chung conducted the statistical analyses. All authors revised the article.

ACKNOWLEDGMENTS

This study was funded by the National Institutes of Health (NIH; grant R03-HD076066).

We are grateful to Jenny Liang and Meghana Bhimarao at the University of California, Berkeley for help creating maps of the study beaches and to Sharon Nappier, John Ravenscroft, and Andrey Egorov at the US Environmental Protection Agency (EPA) for helpful comments on a draft of this article.

Note. The views expressed in this article are those of the authors and do not necessarily reflect the views or policies of the EPA. NIH had no role in the design and conduct of the study; collection, management, analysis, and interpretation of the data; preparation, review, or approval of the article; or decision to submit the article for publication.

HUMAN PARTICIPANT PROTECTION

The 13 study protocols were each reviewed and approved by institutional review boards at the University of California, Berkeley, the University of North Carolina, Chapel Hill, and the Centers for Disease Control and Prevention and received ethical approval from the US Environmental Protection Agency human subjects official. All participants provided written informed consent.

REFERENCES

- Houston JR. The economic value of beaches—a 2013 update. *Shore & Beach*. 2013;81(1):3–11.
- US Environmental Protection Agency. *Recreational Water Quality Criteria*. Washington, DC: Office of Water; 2012.
- Guidelines for Safe Recreational Water Environments. Volume 1: Coastal and Fresh Waters*. Geneva, Switzerland: World Health Organization; 2003.
- Concerns raised over water quality at the Rio Olympics. *Lancet Infect Dis*. 2015;15(9):987.
- Roig S. Sewage spill closes Honolulu's Waikiki beach through Wednesday. 2015. Available at: <http://www.reuters.com/article/2015/08/26/us-usa-hawaii-sewage-idUSKCN0QU26L20150826>. Accessed September 17, 2015.

6. Wade TJ, Pai N, Eisenberg JNS, Colford JM. Do U.S. Environmental Protection Agency water quality guidelines for recreational waters prevent gastrointestinal illness? A systematic review and meta-analysis. *Environ Health Perspect*. 2003;111(8):1102–1109.

7. Wade TJ, Calderon RL, Sams E, et al. Rapidly measured indicators of recreational water quality are predictive of swimming-associated gastrointestinal illness. *Environ Health Perspect*. 2006;114(1):24–28.

8. Wade TJ, Calderon RL, Brenner KP, et al. High sensitivity of children to swimming-associated gastrointestinal illness: results using a rapid assay of recreational water quality. *Epidemiology*. 2008;19(3):375–383.

9. Colford JM, Wade TJ, Schiff KC, et al. Water quality indicators and the risk of illness at beaches with nonpoint sources of fecal contamination. *Epidemiology*. 2007;18(1):27–35.

10. Wade TJ, Sams E, Brenner KP, et al. Rapidly measured indicators of recreational water quality and swimming-associated illness at marine beaches: a prospective cohort study. *Environ Health*. 2010;9:66.

11. Colford JM, Schiff KC, Griffith JF, et al. Using rapid indicators for *Enterococcus* to assess the risk of illness after exposure to urban runoff contaminated marine water. *Water Res*. 2012;46(7):2176–2186.

12. Arnold BF, Schiff KC, Griffith JF, et al. Swimmer illness associated with marine water exposure and water quality indicators: impact of widely used assumptions. *Epidemiology*. 2013;24(6):845–853.

13. Yau VM, Schiff KC, Arnold BF, et al. Effect of submarine groundwater discharge on bacterial indicators and swimmer health at Avalon Beach, CA, USA. *Water Res*. 2014;59:23–36.

14. Wade TJ, Sams EA, Haugland R, et al. *Report on 2009 National Epidemiologic and Environmental Assessment of Recreational Water Epidemiology Studies*. Washington, DC: US Environmental Protection Agency; 2010.

15. Fleisher JM, Fleming LE, Solo-Gabriele HM, et al. The BEACHES study: health effects and exposures from non-point source microbial contaminants in subtropical recreational marine waters. *Int J Epidemiol*. 2010;39(5):1291–1298.

16. Dorevitch S, Pratap P, Wroblewski M, et al. Health risks of limited-contact water recreation. *Environ Health Perspect*. 2012;120(2):192–197.

17. Lamparelli CC, Pogreba-Brown K, Verhougstraete M, et al. Are fecal indicator bacteria appropriate measures of recreational water risks in the tropics: a cohort study of beach goers in Brazil? *Water Res*. 2015;87:59–68.

18. Dufour AP, Evans O, Behymer TD, Cantú R. Water ingestion during swimming activities in a pool: a pilot study. *J Water Health*. 2006;4(4):425–430.

19. Koehler KM, Lasky T, Fein SB, et al. Population-based incidence of infection with selected bacterial enteric pathogens in children younger than five years of age, 1996–1998. *Pediatr Infect Dis J*. 2006;25(2):129–134.

20. Nwachuku N, Gerba CP. Health risks of enteric viral infections in children. *Rev Environ Contam Toxicol*. 2006;186:1–56.

21. *Addendum to Guidelines for Safe Recreational Water Environments*. Geneva, Switzerland: World Health Organization; 2009.

22. *Method 1600: Enterococci in Water by Membrane Filtration Using Membrane-Enterococcus Indoxyl-Beta-D-Glucoside Agar (mEI)*. Washington, DC: US Environmental Protection Agency; 2006.

23. US Environmental Protection Agency. Method 1611: enterococci in water by TaqMan® quantitative polymerase chain reaction (qPCR) assay. 2012. Available at: https://www.epa.gov/sites/production/files/2015-08/documents/method_1611_2012.pdf. Accessed May 31, 2016.
24. Baqui AH, Black RE, Yunus M, Hoque AR, Chowdhury HR, Sack RB. Methodological issues in diarrhoeal diseases epidemiology: definition of diarrhoeal episodes. *Int J Epidemiol*. 1991;20(4):1057–1063.
25. Hedges LV, Vevea JL. Fixed- and random-effects models in meta-analysis. *Psychol Methods*. 1998;3(4):486.
26. Zou G. A modified Poisson regression approach to prospective studies with binary data. *Am J Epidemiol*. 2004;159(7):702–706.
27. VanderWeele TJ, Knol MJ. A tutorial on interaction. *Epidemiol Methods*. 2014;3(1):33–72.
28. Greenland S, Drescher K. Maximum likelihood estimation of the attributable fraction from logistic models. *Biometrics*. 1993;49(3):865–872.
29. Greenland S. Interval estimation by simulation as an alternative to and extension of confidence intervals. *Int J Epidemiol*. 2004;33(6):1389–1397.
30. Lipsitch M, Tchetgen ET, Cohen T. Negative controls: a tool for detecting confounding and bias in observational studies. *Epidemiology*. 2010;21(3):383–388.
31. Arnold BF, Ercumen A, Benjamin-Chung J, Colford JM Jr. Negative controls to detect selection bias and measurement bias in epidemiologic studies. *Epidemiology*. May 11, 2016. [Epub ahead of print]
32. Wu J, Long SC, Das D, Dorner SM. Are microbial indicators and pathogens correlated? A statistical analysis of 40 years of research. *J Water Health*. 2011;9(2):265–278.
33. Fleisher JM. The effects of measurement error on previously reported mathematical relationships between indicator organism density and swimming-associated illness: a quantitative estimate of the resulting bias. *Int J Epidemiol*. 1990;19(4):1100–1106.
34. Fleisher JM, Kay D, Wyer MD, Godfree AF. Estimates of the severity of illnesses associated with bathing in marine recreational waters contaminated with domestic sewage. *Int J Epidemiol*. 1998;27(4):722–726.