

# Lawrence Berkeley National Laboratory

Lawrence Berkeley National Laboratory

## Title

The farthest known supernova: Support for an accelerating universe and a glimpse of the epoch of deceleration

## Permalink

<https://escholarship.org/uc/item/15m50317>

## Authors

Riess, Adam G.  
Nugent, Peter E.  
Schmidt, Brian P.  
[et al.](#)

## Publication Date

2001-04-01

Peer reviewed

# The Farthest Known Supernova: Support for an Accelerating Universe and a Glimpse of the Epoch of Deceleration<sup>1</sup>

*Accepted to the Astrophysical Journal*

Adam G. Riess<sup>2</sup>, Peter E. Nugent<sup>3</sup>, Brian P. Schmidt<sup>4</sup>, John Tonry<sup>5</sup>, Mark Dickinson<sup>2</sup>, Ronald L. Gilliland<sup>2</sup>, Rodger I. Thompson<sup>6</sup>, Tamás Budavári<sup>7</sup>, Stefano Casertano<sup>2</sup>, Aaron S. Evans<sup>8</sup>, Alexei V. Filippenko<sup>9</sup>, Mario Livio<sup>2</sup>, David B. Sanders<sup>5</sup>, Alice E. Shapley<sup>10</sup>, Hyron Spinrad<sup>7</sup>, Charles C. Steidel<sup>10</sup>, Daniel Stern<sup>11</sup>, Jason Surace<sup>12</sup>, and Sylvain Veilleux<sup>13</sup>

## ABSTRACT

We present photometric observations of an apparent Type Ia supernova (SN Ia) at a redshift of  $\sim 1.7$ , the farthest SN observed to date. The supernova, SN 1997ff, was discovered in a repeat observation by the *Hubble Space Telescope* (*HST*) of the Hubble Deep Field–North (HDF-N), and serendipitously monitored with NICMOS on *HST* throughout the Thompson et al. GTO campaign. The SN type can be determined from the host galaxy type: an evolved, red elliptical lacking enough recent star formation to provide a significant population of core-collapse supernovae. The classification is further supported by diagnostics available from the observed colors and temporal behavior of the SN, both of which match a typical SN Ia. The photometric record of the SN includes a dozen flux measurements in the *I*, *J*, and *H* bands spanning 35 days

---

<sup>1</sup>Based on observations with the NASA/ESA *Hubble Space Telescope*, obtained at the Space Telescope Science Institute, which is operated by AURA, Inc., under NASA contract NAS 5-26555

<sup>2</sup>Space Telescope Science Institute, 3700 San Martin Drive, Baltimore, MD 21218

<sup>3</sup>Lawrence Berkeley National Laboratory, Berkeley, CA 94720

<sup>4</sup>Mount Stromlo and Siding Spring Observatories, Private Bag, Weston Creek P.O. 2611, Australia

<sup>5</sup>Institute for Astronomy, University of Hawaii, 2680 Woodlawn Dr., Honolulu, HI 96822

<sup>6</sup>Steward Observatory, University of Arizona, Tucson, AZ 85721

<sup>7</sup>Department of Physics and Astronomy, The Johns Hopkins University, Baltimore, MD 21218; and Department of Physics, Eötvös University, Budapest, Pf. 32, Hungary, H-1518

<sup>8</sup>Department of Physics and Astronomy, SUNY, Stony Brook, NY 11794-3800

<sup>9</sup>Department of Astronomy, University of California, Berkeley, CA 94720-3411

<sup>10</sup>Palomar Observatory, California Institute of Technology, Mail Code 105-24, Pasadena, CA 91125

<sup>11</sup>Jet Propulsion Laboratory, California Institute of Technology, Mail Code 169-327, Pasadena, CA 91109

<sup>12</sup>SIRTF Science Center, California Institute of Technology, Mail Code 314-6, Pasadena, CA 91125

<sup>13</sup>Department of Astronomy, University of Maryland, College Park, MD 20742

in the observed frame. The redshift derived from the SN photometry,  $z = 1.7 \pm 0.1$ , is in excellent agreement with the redshift estimate of  $z = 1.65 \pm 0.15$  derived from the  $U_{300}B_{450}V_{606}I_{814}J_{110}J_{125}H_{160}H_{165}K_s$  photometry of the galaxy. Optical and near-infrared spectra of the host provide a very tentative spectroscopic redshift of 1.755. Fits to observations of the SN provide constraints for the redshift-distance relation of SNe Ia and a powerful test of the current accelerating Universe hypothesis. The apparent SN brightness is consistent with that expected in the decelerating phase of the preferred cosmological model,  $\Omega_M \approx 1/3, \Omega_\Lambda \approx 2/3$ . It is inconsistent with grey dust or simple luminosity evolution, candidate astrophysical effects which could mimic previous evidence for an accelerating Universe from SNe Ia at  $z \approx 0.5$ . We consider several sources of potential systematic error including gravitational lensing, supernova misclassification, sample selection bias, and luminosity calibration errors. Currently, none of these effects alone appears likely to challenge our conclusions. Additional SNe Ia at  $z > 1$  will be required to test more exotic alternatives to the accelerating Universe hypothesis and to probe the nature of dark energy.

subject headings: supernovae: general — cosmology: observations

## 1. Introduction

The unexpected faintness of Type Ia supernovae (SNe Ia) at  $z \approx 0.5$  provides the most direct evidence that the expansion of the Universe is accelerating, propelled by “dark energy” (Riess et al. 1998; Perlmutter et al. 1999). This conclusion is supported by measurements of the characteristic angular scale of fluctuations in the cosmic microwave background (CMB) which reveal a total energy density well in excess of the fraction attributed to gravitating mass (de Bernardis et al. 2000; Balbi et al. 2000; Jaffe et al. 2001).

However, contaminating astrophysical effects can imitate the evidence for an accelerating Universe. A pervasive screen of grey dust could dim SNe Ia with little telltale reddening apparent from their observed colors (Aguirre 1999a,b; Rana 1979, 1980). Although the first exploration of a distant SN Ia at near-infrared (near-IR) wavelengths provided no evidence of nearly grey dust, more data are needed to perform a definitive test (Riess et al. 2000).

A more familiar challenge to the measurement of the global acceleration or deceleration rate is luminosity evolution (Sandage & Hardy 1973). The lack of a complete theoretical understanding of SNe Ia and an inability to identify their specific progenitor systems undermines our ability to predict with confidence the direction or degree of luminosity evolution (Höflich, Wheeler, & Thielemann 1998; Umeda et al. 1999a,b; Livio 2000; Drell, Loredo, & Wasserman 2000; Pinto & Eastman 2000; Yungelson & Livio 2000). The weight of empirical evidence appears to disfavor evolution as an alternative to dark energy, as the cause of the apparent faintness of SNe Ia at  $z \approx 0.5$  (see Riess 2000 for a review). However, the case against evolution remains short of



F814W filter. The elliptical host of SN 1997ff indicated that this supernova was “most probably a SN Ia...[at] the greatest distance reported previously for SNe,” but the observations at a single epoch and in a single band were insufficient to provide useful constraints on the SN and hence to perform cosmological tests (Gilliland, Nugent, & Phillips 1999, hereafter GNP99).

Here we report additional, *serendipitous* observations of SN 1997ff obtained in the Guaranteed Time Observer (GTO) NICMOS campaign (Thompson et al. 1999) and in General Observer (GO) program 7817 (Dickinson et al. 2001), as well as spectroscopy of the host. The combined data set provides the ability to put strong constraints on the redshift and distance of this supernova and shows it to be the highest-redshift SN Ia observed (to date). These measurements further provide an opportunity to perform a new and powerful test of the accelerating Universe by probing its preceding epoch of deceleration.

In §2 of this paper, we describe the observations of the SN and its host in the HDF-N and report photometry of the SN from the NICMOS campaign. In §3 we analyze the observations to constrain the SN parameters: redshift, luminosity, age of discovery, and distance. The constraints are used to extend the distance-redshift relation of SNe Ia to  $z > 1$  and to discriminate between cosmological models and contaminating astrophysical effects. Section 4 contains a discussion of the systematic uncertainties in our measurements and their implications. We summarize our findings in §5.

## 2. Observations

### 2.1. The Discovery of SN 1997ff

Between Dec. 23 and Dec. 26, 1997, Gilliland & Phillips (GO 6473) re-observed the HDF-N with *HST* to detect high-redshift SNe. These observations were obtained with WFPC2 (F814W) during 18 *HST* orbits in the continuous viewing zone (CVZ) and at a spacecraft orientation as closely matched to the original HDF-N as possible. To critically sample the WF point-spread function (PSF) and robustly reject all hot pixels, CCD defects, and noise fluctuations, the exposures were well dithered using 18 different sub-pixel and multi-pixel offsets. Additional F300W frames were obtained during the bright portion of the CVZ orbits to support improved rejection of transient hot pixels. The total F814W exposure time in the second HDF-N epoch (6300 s) was 51% of that obtained in the original epoch 2.0 years prior.

After careful processing, the second epoch was registered with the first and difference frames in both temporal directions were produced. Robust SN detection thresholds were determined by a Monte Carlo exercise of adding PSFs of varying brightness onto host galaxies of varying redshifts. From this exercise it was determined that a brightness threshold of  $m_I < 27.7$  (Johnson-Cousins) would ensure the rejection of all spurious transients. Simulations of completeness indicated that 95% of SNe at  $m_I = 27$  coincident with host galaxies at  $1.5 < z < 1.9$  would be discovered.

Only transients which were brighter than the rejection threshold, visible in each of three subsets and near a host galaxy, were identified as SNe. Candidates coincident with hosts' centers were discarded as possible active galactic nuclei. The harvest from the HDF-N SN search was two robust SN detections: SN 1997fg and SN 1997ff at a signal-to-noise ratio ( $S/N$ ) of 20 and 9, respectively. The former was hosted by a late-type galaxy with a spectroscopic redshift of 0.95.

SN 1997ff was discovered at  $m_I = 27.0$  mag,  $RA = 12^h 36^m 44.11^s$ ,  $Dec = +62^\circ 12' 44.8''$  (equinox J2000),  $0.16''$  southwest of the center of the host galaxy, 4-403.0 (Williams et al. 1996). The host has been classified as an elliptical galaxy based on measurements of its surface-brightness profile, concentration, asymmetry, and colors as well as by visual inspection (Williams et al. 1996; Fernandez-Soto, Lanzetta, & Yahil 1999; Dickinson 1999; Thompson et al. 1999; Budavári et al. 2000). A section of the HDF-N near the SN host is shown in Figure 1 as observed with WFPC2 and NICMOS. GNP99 favored the classification of SN 1997ff as Type Ia due to the red, elliptical host.

Photometric redshift determinations of the host had been published using only  $U_{300}B_{450}V_{606}I_{814}$  photometry of the HDF-N ( $z = 0.95$ ; Sawicki, Lin, & Yee 1997), as well as from the later addition of  $J_{125}H_{165}K_s$  data from the ground ( $z = 1.32$ ; Fernandez-Soto et al. 1999). To span the rest-frame optical breaks in the spectral energy distribution (SED) of galaxies with  $z > 1$  and reliably estimate their photometric redshift, it is necessary to employ both optical and near-IR data. GNP99 assumed the Fernandez-Soto et al. (1999) redshift which employed the best available coverage of the host SED to date. However, even with the monochromatic detection of a probable SN Ia and an estimate of its redshift, the extraction of useful cosmological information from SN 1997ff was not feasible and was not attempted.

## 2.2. Serendipity: The NICMOS Campaigns

Two near-IR assaults on the HDF-N with NICMOS on *HST* provided a wealth of data and understanding on the natural history of galaxies (see Ferguson, Dickinson, & Williams 2000 for a review). The GTO program of Thompson et al. (1999; GTO 7235) consisted of  $\sim 100$  orbits of F110W and F160W exposures of a single  $55'' \times 55''$  Camera-3 field, reaching a limiting AB magnitude (Oke & Gunn 1983) of 29 in the latter. The observations were gathered during 14 consecutive days and the field was contained within the WF4 portion of HDF-N, *serendipitously* imaging the host of SN 1997ff. (It is interesting to note that the placement of the GTO field within the HDF-N had less than a 20% chance of containing SN 1997ff.) Although the program did not begin until January 19, 1998, about 25 days after the discovery of the SN, a series of single-dither exposures (GO 7807) was taken between the discovery of the SN and the start of the GTO program for the purpose of verifying the suitability of the chosen guide stars. Each of these exposures was for a duration 960 s. A single F110W and F240M exposure on Jan. 6, 1998 included the host as did a F160W exposure from Jan. 2, 1998 and another on Dec. 26, 1997. *The Dec. 26 NICMOS exposure was coincident within hours of the WFPC2 discovery exposures.* (It is

of further interest to note the low likelihood of the chance temporal coincidence of the HDF-N SN Search and the GTO program, each initially scheduled in different *HST* cycles.)

Table 1: AB magnitudes of the host galaxy of SN 1997ff

| bandpass      | $\log(\lambda/\mu\text{m})$ | AB mag                  |
|---------------|-----------------------------|-------------------------|
| $FUV_{160}^b$ | -0.80                       | <30.0                   |
| $NUV_{250}^b$ | -0.60                       | <29.2                   |
| $U_{300}$     | -0.53                       | $27.84^{+2.48}_{-0.70}$ |
| $B_{450}$     | -0.34                       | $26.67 \pm 0.16$        |
| $V_{606}$     | -0.22                       | $25.64 \pm 0.04$        |
| $I_{814}$     | -0.10                       | $24.42 \pm 0.02$        |
| $J_{110}$     | 0.04                        | $22.60 \pm 0.02$        |
| $J_{125}^a$   | 0.10                        | $21.96 \pm 0.03$        |
| $H_{160}$     | 0.20                        | $21.59 \pm 0.01$        |
| $H_{165}^a$   | 0.22                        | $21.55 \pm 0.03$        |
| $K_s^a$       | 0.33                        | $21.03 \pm 0.02$        |

<sup>a</sup>Ground-based observation; Fernandez-Soto et al. (1999).

<sup>b</sup>95% limits from *HST* STIS; Ferguson (2001, private communication).

A second program was undertaken 6 months after the GTO program, between June 14 and June 22, 1998 by Dickinson et al. (2001; GO 7817). This program observed the entire HDF-N in F110W and F160W to a limiting AB magnitude of  $\sim 26.5$  by mosaicing Camera 3 of NICMOS to study a wider field of galaxies. This program also contained the host galaxy and the greatly faded light of the supernova. The space-based near-IR photometry of the SN host offered greater precision and coverage of the SED than the ground-based data alone and allowed an improved estimate of the photometric redshift. Using the space-based  $U_{300}B_{450}V_{606}I_{814}J_{110}H_{160}$  photometry and the ground-based  $J_{125}H_{165}K_s$  photometry contained in Table 1, Budavári et al. (2000) determined the redshift of the host to be  $z = 1.65 \pm 0.15$  from fits to either galaxy SED eigenspectra or these same eigenspectra mildly corrected to improve the agreement between spectroscopic and photometric redshifts. The redshift constraints derived from the host photometry are analyzed in §3.1.

### 2.3. SN Photometry

The two HDF-N NICMOS campaigns taken together offer a rare opportunity to measure the behavior of a supernova a-417.6-4y998-7-97011-12-0-7-0-15) 22-56-9-7-0-12-0-7-0-15) Td (a) Tj-33-6-9-9-0-10-16-

$\sim 24$  mag and in F110W at  $\sim 24.5$  mag. The 130 kiloseconds of exposure time in each bandpass of the GTO program would be expected to reach  $S/N \approx 100$  for a SN Ia at peak, though actual measurements impacted by the shot noise of the bright host may be more uncertain. Because the SN would not be at peak for some or all of the observations, we expect further reductions in the measurement precision. If the apparent brightnesses of high-redshift SNe are dominated by evolution and/or dust, and not by cosmology, the  $S/N$  of the SN might be further reduced. For the single dithers used to test guide stars we expect a  $S/N$  no better than  $\sim 10$  and possibly worse due to the above mitigating factors.

Another valuable and fortuitous feature of the NICMOS campaigns is that they likely sample the rest-frame light of the supernova in the  $B$  and  $V$  bands, the most studied and best understood wavelength region of nearby SNe. Indeed, the great difficulty in observing these wavelengths from the ground has generally limited the detection and monitoring of SNe Ia to  $z \lesssim 1$ . In the  $\sim 2$  rest-frame months expected to have elapsed between the two separate NICMOS programs, a SN Ia is expected to fade  $\sim 3$  mag, resulting in a significant surplus of flux in the difference image of the two epochs.

Our goal is to measure the photometry of the SN throughout the 35 days of the GTO program. However, our task is complicated by the proximity of the SN to its bright host. GNP99 found that the SN was located at the half-light radius of the galaxy in F814W. As we will find, the host contains 2 to 6 times as much flux at the position of the SN as the peak of the SN PSF, depending on the band and the date of the exposure. The strategy of digitally subtracting an image of the host obtained when the SN has faded (template image) from one taken when the SN is relatively bright has been successfully employed by the SCP (Perlmutter et al. 1995) and the High- $z$  Team (Schmidt et al. 1998), as well as by GNP99 using the original HDF-N images as a template image. This is the method we employed.

The task of geometrically mapping (i.e., registering) the images from the Thompson et al. campaign to align with the template image from the Dickinson et al. campaign was complicated by the timing and field location of the former. As seen in Figure 2, the exposure time for the SN in the Thompson et al. campaign was dispersed irregularly over a 35-day time interval, requiring careful consideration of the optimal way to measure the temporal behavior of the SN while still yielding robust photometry (see below). In addition, the location of the SN was always extremely close to the corner of the Camera 3 field of  $256 \times 256$  pixels, missing the chip during a third of the dithers, and landing 1 to 15 pixels from the corner in the rest. Although the Camera-3 field is remarkably distortion-free in its interior, a mild degree of “pincushion” distortion exists in the extreme corners. Even distortions of a few tenths of a pixel are intolerable for the accurate subtraction of the host flux from the SN (Cox et al. 1997). Although application of the NIC-3 geometric distortion map removes much of the distortion in the field corners, we applied an empirically derived linear mapping between the SN image and template to further reduce host contamination.



Our first step was to use the SExtractor algorithm (Bertin & Arnouts 1996) to detect sources and measure their centroids in the template and SN images. Custom software was used to match identical sources in the two lists (Schmidt et al. 1998). Next, the *geomap* routine in IRAF was used to derive a flux-conserving mapping of the SN images to the template coordinate system. In practice we found that many of the individual 900-s dithers in the GTO campaign did not provide the desired  $S/N$  in the centroid measurements to derive a robust mapping to the template coordinate system. A tenable alternative is to first drizzle together a subset of the dithers (Fruchter & Hook 1997; Thompson et al. 1999; GNP99) before deriving the nonlinear coordinate transform. This practice has the advantage of increasing the precision of the centroid measurements of the sources, allowing for the critical sampling of the PSF, reducing the effects of NICMOS interpixel sensitivity (Storrs et al. 1999), and providing the ability to further remove cosmic rays (Thompson et al. 1999). However, the obvious disadvantage of combining the dithers before further processing (i.e., binning) is a reduction in our ability to resolve the temporal behavior of the SN. After much experimentation, we chose an intermediate strategy of combining the dithers from the main GTO campaign into 3 temporal bins of observed-frame width  $\sim 2$  days for each of the F110W and F160W data sets. A similar strategy was used by GNP99 to provide time-resolved magnitudes of the SN in F814W. The necessary exception to the practice of binning was for the measurement of the SN flux in the individual 960-s dithers used to test guide stars before the GTO campaign.

We employed the Alard (2000) algorithm to match the PSF, mean intensity, and background in the template and SN images. Using the nearest visible sources to the SN’s position, we first derived and then applied a convolution kernel with a linear variation across the sources. (Again, experimentation showed a constant convolution kernel was inadequate for matching the two image PSFs, and second-order convolutions were unstable due to a lack of enough sources with sufficient  $S/N$  to measure the kernel variation.) Next, we subtracted the template image from the SN images. As seen in Figure 3, the resulting image contains the SN without the contaminating light of the host. An important test of these image-processing routines is to verify a lack of significant flux residuals in the vicinity of other galaxies (which did not host SNe) in the field. Confirmation of this test can be seen in Figure 3 (see also GNP99, Figure 1 for the comparable F814W discovery images of SN 1997ff).

Next, we measured the flux of the SN. Again, the format of the NICMOS campaigns (optimized for galaxy studies, not for the monitoring of SN 1997ff) presented challenges rarely encountered by past high-redshift supernova programs. Typically, the leading source of noise in the measurements of the flux in high-redshift SNe is the shot noise in the sky (or the host galaxy in *HST* observations). For the NICMOS observations of SN 1997ff, the dominant source of uncertainty is the host galaxy residuals in the difference image. The location of the SN near the core of a much brighter host results in the appearance of significant galaxy residuals from typically tolerable errors of 0.1 pixels in the image pair registration. Eradicating registration errors at the position of the SN is made more difficult by the location of the host galaxy near the corner of the Camera 3 field in the Thompson et al. (1999) campaign. For some images we reduced this error by

processing only a subset of the image around the SN. Galaxy residuals in the difference image can also result from the undersampling of Camera 3 and from variations of the intrapixel sensitivity. To derive a robust measure of the SN flux we used a relatively large aperture to contain the net flux near the SN impacted by the galaxy residuals. In practice apertures with a radius of 5 to 10 oversampled-by-two pixels ( $0.5''$  to  $1.0''$ ) were used. The flux of the SN was measured relative to that contained in an equal-sized aperture of a bright comparison star at the center of the GTO field. Flux uncertainties were determined by a Monte Carlo exercise of adding and measuring artificial SNe in the field with the same brightness and background as SN 1997ff (Schmidt et al. 1998). For the single F110W dither from Jan. 6, 1998, the SN was not detected but a flux upper limit was established by the Monte Carlo exercise.

We transformed the relative SN flux onto the F110W AB and F160W AB magnitude systems by applying the zero points of the transformation equation from Dickinson et al. (2001). A count rate for the comparison star of 3.22 and 1.85 ADU per second was measured in F110W and F160W, respectively. Using the zero points of 22.89 for AB F110W and 22.85 for AB F160W gave a measured mag of 21.62 and 22.18 for the star in these two bandpasses, respectively. (An expected uncertainty of  $\sim 5\%$  in these zero points is insignificant in comparison to the uncertainties in the relative photometry.) Addition of the measured magnitude differences between the star and the SN yielded the measurements for the SN on the AB system. To transform the AB system magnitudes onto the Vega system we calculated the bandpass-weighted magnitudes of spectrophotometry of Vega (relative to a flat spectrum) and derived the zero-point offsets of  $-1.34$  and  $-0.75$  mag for F160W and F110W, respectively. The Vega-system F160W and F110W magnitudes are given in Table 2 as are the F814W Vega system magnitudes from GNP99. It is important to note, that the magnitudes of the SN in F110W and F160W as listed in Table 2 are *underestimates* of the flux due to the presence of SN flux in the template images from Dickinson et al. The templates were obtained 177 days after the discovery epoch of Dec. 23, 1997. To accurately correct the SN mags in Table 2 for the oversubtraction, it is necessary to fit the light curve to determine this correction. This step is performed in §3.2.

## 2.4. Host Spectroscopy

On the nights of 21, 26, and 27 Nov. 2000 UT, about 2 hours of optical spectroscopy were obtained of the SN host using the echelle spectrograph and imager (ESI) on Keck II under poor conditions (seeing  $\sim 1.3''$  and an airmass of 1.7–2). During the nights of 23 and 24 Feb. 2001 UT, 3.5 hours of optical spectroscopy were gathered using the low-resolution imaging spectrograph (LRIS; Oke et al. 1995) on Keck I in good conditions (seeing  $\sim 0.8''$  and an airmass of 1.4). An additional 2.5 hours of optical spectroscopy were obtained with ESI on Keck II on the nights of 26 and 27 Feb. 2001 UT. The total data set of optical spectroscopy consisted of 8 hours with a wavelength coverage of 4000 Å to 10000 Å. A small amount of continuum flux was detected in the composite spectrum with evidence of some minor breaks in the galaxy SED, but there was no

Table 2: Vega magnitudes of SN 1997ff\*

| Days since 12/23/97 | F814W<br>(mag)           | F110W*<br>(mag) | F160W*<br>(mag) | $K_B^d$<br>(mag) | $m_{eff}(B)$<br>(mag) |
|---------------------|--------------------------|-----------------|-----------------|------------------|-----------------------|
| –770.               | >27.3 <sup>b</sup>       | —               | —               | —                | —                     |
| –229.               | >26.0 <sup>a</sup>       | —               | —               | —                | —                     |
| 0.83                | 26.94(0.15) <sup>c</sup> | —               | —               | 0.96             | 25.98(0.15)           |
| 2.78                | 27.09(0.15) <sup>c</sup> | —               | —               | 1.01             | 26.08(0.15)           |
| 3.0                 | —                        | —               | 23.49(0.20)     | –2.57            | 26.00(0.20)           |
| 3.74                | 26.92(0.13) <sup>c</sup> | —               | —               | 1.03             | 25.89(0.13)           |
| 10.                 | —                        | —               | 23.56(0.15)     | –2.69            | 26.17(0.15)           |
| 14.                 | —                        | >23.3           | —               | –1.64            | > 24.86               |
| 28.5                | —                        | —               | 23.84(0.20)     | –3.14            | 26.83(0.20)           |
| 30.5                | —                        | —               | 24.26(0.25)     | –3.20            | 27.30(0.25)           |
| 32.0                | —                        | 25.67(0.30)     | —               | –1.65            | 27.16(0.30)           |
| 32.5                | —                        | —               | 24.27(0.20)     | –3.26            | 27.36(0.20)           |
| 34.5                | —                        | 25.67(0.20)     | —               | –1.66            | 27.14(0.20)           |
| 37.0                | —                        | 25.92(0.20)     | —               | –1.66            | 27.38(0.20)           |

\*Underestimates due to flux in template observed at +177 days.

<sup>a</sup>Estimated from *HST* archive images (GO 7588).

<sup>b</sup>Estimated from initial HDF-N.

<sup>c</sup>From GNP99.

<sup>d</sup> $K$ -corrections to the  $B$ -band for best fit:  $z = 1.7$ , SN discovered one week past maximum brightness.

evidence of either a strong break in the galaxy SED or any emission lines.

Observations were made with the near-IR spectrograph NIRSPEC (McLean et al. 1998) on Keck II on the nights of 16 and 17 March 2001 UT and on 14 April 2001 UT. On all dates the 0.76'' slit was oriented at a position angle (PA) of 184.6° to include a galaxy ~ 3'' to the North.

In the March campaign, the slit was rotated to a PA such that light from both the host galaxy and the nearby bright galaxy fell onto the slit. The host galaxy was then positioned on the slit by first obtaining short-integration images of the field, then moving the telescope to position the nearby galaxy onto the slit. Spectroscopic observations were obtained by taking four 600-s integrations. After the first integration, the slit was moved 15'' in the spatial direction on the array for the second integration, then moved back to the original position where the process was repeated.

In the April campaign, the target was acquired by placing a nearby bright star onto the slit position desired, and offsetting the telescope ~ 85'' to place the target at the same position on the

slit. The conditions were excellent, with seeing estimated at  $0.45''$  FWHM for the duration of the observation. Eight exposures of 900 seconds each were obtained; after each exposure, the offsets were reversed and the alignment of the star on the slit was checked using images obtained with the IR slit viewing camera. Judging by these checks, the telescope offsetting and guiding was accurate to better than 1 pixel ( $\sim 0.14''$ ). For each exposure, the target was placed on a different position along the  $42''$  slit, to reduce detector systematics and to allow for more accurate sky subtraction.

All the data were reduced following a procedure very similar to that described in Pettini et al. (2001). The data from 2001 March and 2001 April were reduced independently, and then combined with appropriate weighting into the final co-added 2-D spectrum. The 1-D spectrum was extracted using an aperture of  $1.2''$ .

The feature which may be *very* tentatively identified as the [O II]  $\lambda 3727$  line at  $z = 1.755$  falls in a relatively rare region that is unaffected by bright OH lines in the night sky, although there is a strong sky emission feature at  $1.029 \mu\text{m}$ , i.e., just to the red of the putative [O II] feature. The excess emission is present in individual subsets of the data, and becomes more prominent when the 40 minutes of integration time from 2001 March are combined with the 120 minutes from 2001 April. The line is well resolved at a spectral resolution of  $\sim 7.5 \text{ \AA}$ , consistent with expectations for the [O II] doublet which has a rest-frame separation of  $\sim 2 \text{ \AA}$ . (Single emission lines in the spectrum of the nearby  $z = 0.556$  galaxy, and most but not all sky-subtraction residuals, are significantly narrower.) This feature is noteworthy and may function as a useful hypothesis to test with future observations, but at this time its validity is highly uncertain.

### 3. Analysis

#### 3.1. The Redshift of the SN and its Host

As discussed in §2, fitting the  $U_{300}B_{450}V_{606}I_{814}J_{110}H_{160}$  space-based photometry and the  $J_{125}H_{165}K_s$  ground-based photometry of 4-403.0 to galaxy SEDs yields a photometric redshift of  $z = 1.55$  to  $1.70$  with variations depending on whether the fitted model is based on template galaxy SEDs (Coleman, Wu, & Weedman 1980, hereafter CWW) or galaxy eigenspectra (Budavári et al. 2000). These fits can be seen in Figure 4. The well-constrained fits between model and data indicate a far greater degree of precision in the redshift ( $1\sigma \approx 0.02$ ) than is empirically found by comparing photometric and spectroscopic redshifts. We therefore consider the empirical dispersion from Budavári et al. (2000) as the measure of the individual uncertainty.

Using a set of orthogonal eigenspectra derived from the CWW galaxy template SEDs yields the lowest redshift,  $z = 1.55 \pm 0.15$ , and empirically the least precise and robust (Budavári et al. 2000). Indeed, significant outliers occasionally result from the application of this method. A more robust and precise redshift estimate comes from the fitting of improved eigenspectra. These are derived from the CWW SED eigenspectra which are first “repaired” (see Budavári et al.

2000) as required to improve the agreement between the photometric and spectroscopic redshifts. Mild repairing yields  $z = 1.65 \pm 0.13$  (model KL2) and further repairing (model KL5) provides  $z = 1.70 \pm 0.10$  (Budavári et al. 2000). The biggest advantage of first repairing the eigenspectra is the suppression of outliers, yielding a more robust estimate. In addition, the relatively simple SEDs of early-type galaxies such as 4-403 generally provide more robust photometric redshifts (Budavári et al. 2000). For 4-403.0 we will adopt  $z = 1.65 \pm 0.15$  as a measurement which is representative of the photometric redshift.

An additional and independent pathway to determine the redshift is from the SN colors. For the following analysis we will provisionally adopt the classification from GNP99 of SN 1997ff as a Type Ia supernova based on its red, elliptical host galaxy. However, in §4.1 we will analyze the degree to which this classification is merited.

As seen in Table 2, coincident or near-coincident measurements of SN 1997ff in different bands provide an observed  $I - H$  color of  $3.5 \pm 0.2$  mag and a  $J - H$  color of  $1.6 \pm 0.2$  mag,  $30/(1+z)$  days later in the rest frame. In Figure 5 we plot these measurements as a function of expected colors of SNe Ia over their temporal evolution at different redshifts (note that the size of the point scales with the temporal proximity to  $B$  maximum). SNe Ia are bluest shortly after explosion and become redder with age. They reach their reddest color  $\sim 25$  days after maximum in these bandpasses and return to a modestly bluer color during the subsequent nebular phase. As seen in Figure 5, either of the observed colors of SN 1997ff is redder than a SN Ia at any phase for  $z < 1$ . The  $I - H$  color sets a limit of  $z > 1.2$  while the  $J - H$  color is more stringent with  $z > 1.4$ , both at the  $>95\%$  confidence level.

However, the constraint obtained from each observed color treated independently is less restrictive than if we consider their separation in time. In this case our lower limit on the redshift comes from assuming that the later color measurement occurs at the reddest phase of the SN and requiring the earlier color measurement to be consistent with an earlier, bluer phase of the SN. In this way we find  $z > 1.45$  at the 95% confidence level. An upper limit on the redshift comes from the colors and the observation that the SN is declining during the five F160W measurements by  $\sim 1$  mag in the  $\sim 30$  observed-frame days. As seen in Figure 5, the redshift of the SN must be less than 2.0 to both match the  $I - H$  color and be discovered on the decline. A redshift in the range of  $1.5 < z < 1.8$  is coarsely consistent with the observed colors and temporal behavior.

This simple analysis assumes negligible reddening from the host. While this assumption is appropriate for most elliptical hosts, we will consider the effect of reddening explicitly in §4.2. Note that Galactic reddening is very low toward the HDF-N.

The above exercise cannot readily be performed if we assume the SED of a common SN II instead of a SN Ia. Not surprisingly, a comparison of the observed colors of SN 1997ff to those expected for a blue SN II (similar to the well-observed SN 1979C; e.g., Schmidt et al. 1994) yields poor fits to both color measurements and their time separation. For any value of the redshift, the observed  $J - H$  color is far bluer than the color of a common SN II-P or SN II-L (for definitions,

see Barbon, Ciatti, & Rosino 1979) at a phase dictated by the requirement of matching the earlier  $I - H$  color. A common SN II would not match both color measurements of SN 1997ff unless it were observed shortly after explosion and at  $z \approx 2$ . However, the observed decline of SN 1997ff appears inconsistent with the expected rising luminosity or plateau phase of a SN II shortly after explosion. Reddening of the SN would result in an even greater difference between the data and a common SN II. Based on the observed colors and declining luminosity alone, the identification of SN 1997ff as a normal SN II is strongly disfavored, a conclusion which is further discussed in §4.2.

The blue color, bright magnitude, and observed decline of SN 1997ff might be consistent with some SNe IIn (Filippenko 1997), which show considerable heterogeneity in their light curves (Schlegel 1990; Filippenko 2001, private communication). However, these objects are rare, and they are not found in old stellar populations (§4.2). Similarly, SN 1997ff was unlikely to be a SN Ib or SN Ic, which occur in very young stellar populations, are generally redder than SN 1997ff, and are rare; see §4.2.

The spectroscopy of the host presented in §2.4 provides some evidence which is consistent with the preceding redshift determinations and is potentially more precise, but is currently unreliable. As seen in Figure 6a, the optical spectrum of the host suggests two minor breaks which could be identified with the rest-frame breaks at 2640 Å and 2900 Å due to blends of metals (Spinrad et al. 1997). A simple  $\chi^2$  minimization between the optical spectrum of the host and the same region of the SED of the  $z = 1.55$  elliptical LBDS 53w091 (Spinrad et al. 1997) yields a significant minimum bounded by  $z = 1.67$  and  $1.79$  ( $3\sigma$  confidence level). However, this minimum does not appear robust and we cannot rule out the possibility that other redshift matches are possible given other models for the host SED.

The shape of the extracted continuum (Figure 6b) is consistent with the broad-band photometry from *HST* WFPC-2 and NICMOS observations, and is not inconsistent with the presence of a break at 4000 Å in the galaxy rest frame (for  $z \approx 1.7$ ), although for a possible redshift of  $z \approx 1.8$ , the region longward of the 4000 Å break is beyond the wavelength range covered by the NIRSPEC spectrum.

Although the spectroscopic redshift indicators are suggestive of a match with the photometric indicators, the quality of the spectra is too low and the identification of spectral features too uncertain to reach a robust determination of the redshift from the spectroscopy alone. Therefore in the following section we derive constraints from the SN without employing the spectroscopic redshift indications.

### 3.2. Probability Density Functions for SN 1997ff

The simple method for constraining the redshift described in the previous section can be refined to make use of all of the SN photometric data simultaneously. By varying the parameters needed to empirically fit a SN Ia, such as the light-curve shape, distance, redshift, and age, we can

use the quality of the fit to determine the probability density function (PDF) of these parameters. An additional component of this fitting process is to include the known correlation between SN Ia light-curve shapes and their peak luminosities (Phillips 1993; Phillips et al. 1999; Riess, Press, & Kirshner 1996; Perlmutter et al. 1997). Examples of this fitting process can be seen in Figure 7 as applied to SN 1997ff.

In Appendix A we develop a simple formalism for using the observations of SN 1997ff and any prior information which is appropriate to determine the PDF of the parameters of luminosity, distance, redshift, and age commonly used to empirically model SNe Ia. This method is quite general and its application to SN Ia photometry is equivalent to the use of a common light-curve fitting method such as  $\Delta m_{15}(B)$  (Phillips et al. 1999; Hamuy et al. 1996), MLCS (Riess et al. 1996, 1998), or the “stretch method” (Perlmutter et al. 1997), in cases for which the light-curve information is more constraining than prior information. The advantage of this method is its ability to incorporate prior information (e.g., a photometric redshift) in a statistically sound way which properly assigns weights to the relative constraints provided by data and priors.

Due to the presence of SN light in the Dickinson et al. (2001) template images taken 177 days after the SN discovery, it is necessary to restore the flux which is necessarily oversubtracted from the F110W and F160W magnitudes listed in Table 2. The size of the correction depends on the redshift, age of discovery, and shape of the SN light curve. Therefore, we implemented this correction during the process of fitting the data to parameterized models. In the case of the best-fitting light curve, the underestimate of the SN magnitudes from the GTO campaign is 0.1 to 0.2 mag (depending on the phase), and for the guide star test exposures (taken when the SN is  $\sim 1$  mag brighter) the correction is 0.05 mag.

We determined the PDF for SN 1997ff using the methods outlined in Appendices A and B, the previously described data, and specific priors we discuss here.

Riess et al. (1998) found that the observed peak  $B$ -band luminosities of SNe Ia at low redshift ( $0.01 < z < 0.1$ ) and high redshift ( $0.3 < z < 1.0$ ) are characterized by distribution functions with  $\sigma_M \leq 0.25$  mag. An even narrower luminosity function of  $\sigma_M = 0.17$  mag for SNe Ia was found by Perlmutter et al. (1999) for a similar set of low-redshift SNe Ia and an independent set of high-redshift SNe Ia. Although the peak luminosity function of very nearby SNe Ia ( $z < 0.01$ ) includes a low-luminosity “tail” populated by so-called SN 1991bg-like SNe Ia (Filippenko et al. 1992b; Leibundgut et al. 1993; Modjaz et al. 2001), such SNe which are dimmer at peak by  $\sim 2$  mag are undetected in high-redshift, magnitude-limited surveys (Li, Filippenko, & Riess 2001a). We defined a normal function prior for the observed peak luminosity of SNe Ia with a standard deviation of 0.25 mag. Assuming that SN 1997ff was drawn from the same population of SNe Ia that lower-redshift SNe Ia have sampled, we expect this prior to be valid. If, however, the luminosities of SNe Ia have significantly evolved by  $z \approx 1.7$ , then this should be apparent in the divergence of the redshift-magnitude relation of SNe Ia from cosmological models. We also considered a much less constraining prior of  $\sigma_M = 0.50$  mag. Though this prior underutilizes our

empirical knowledge of SN Ia luminosities, it does provide a wider latitude to allow the photometry of SN 1997ff to constrain the fit to its model light-curve shape. (Quantitatively, this prior yields similar results as a perfectly flat luminosity prior.) It also provides for a possibly larger dispersion in peak luminosities of SNe Ia at higher redshifts.

As provided in §3.1, the photometric redshift of the host galaxy from space-based  $U_{300}B_{450}V_{606}I_{814}J_{110}H_{160}$  photometry and the ground-based  $J_{125}H_{165}K_s$  photometry results in the prior constraint  $z = 1.65 \pm 0.15$  (Budavári et al. 2000). (This constraint is also consistent with the host spectroscopy as presented in §3.1.) We determined the PDF of SN 1997ff both with and without this prior photometric constraint. The latter approach, while not optimal for determining the best constraints, does allow us to determine the SN redshift solely from the SN data and test its compatibility with the photometric and spectroscopic redshift determinations.

Finally, because no additional information is available to constrain the remaining two SN Ia parameters, distance and age at discovery (see Appendix A), no further knowledge of these variables was included in the priors.

By marginalizing the 4-D PDF for SN 1997ff over any 3 parameters, we determined the PDF for the fourth parameter of interest. The marginal probability for the redshift, age at discovery, and luminosity are shown in Figure 8. The marginalized PDF of the redshift is not a simple function, though it is strongly peaked near  $z \approx 1.7$  and is insignificant outside the range  $1.4 < z < 1.95$ . A much lower local maximum is seen at  $z = 1.55$ . The redshift measurement of SN 1997ff can be crudely approximated by  $z = 1.7^{+0.10}_{-0.15}$ .

The consistency of the three redshift indicators, determined independently from the galaxy colors, the supernova colors, and the host spectroscopy, provides a powerful and successful crosscheck of our redshift determination. Excluding any galaxy redshift information has little impact on the marginalized redshift PDF of the SN because the SN data are significantly more constraining for the redshift determination. The cause of the difference in measured photometric redshift precision lies in the difference in the relative homogeneity of galaxy and SN Ia colors. For the galaxy photometric determination, the precision of this method is limited by the variations of galaxy SEDs beyond those which can even be accounted for from the superposition of eigenspectra. In contrast, SNe Ia colors are far more homogeneous and their mild inhomogeneities are well characterized, leading to more precise constraints on the photometric redshift.

From the redshift determination we conclude that SN 1997ff is the highest-redshift SN observed to date (as suspected by GNP99), easily surpassing the two SNe Ia at  $z = 1.2$  from the HZT (Tonry et al. 1999; Coil et al. 2000) and the SCP (Aldering et al. 1998). The statistical confidence in this statement is very high.

Marginalizing the PDF for SN 1997ff over the age-of-discovery parameter yields the function shown in Figure 8. We conclude that the SN was discovered by Gilliland & Phillips (1998) at an age of a week past  $B$ -band maximum with an uncertainty of  $\sim 5$  days; however, this estimate is highly non-Gaussian, as seen in Figure 8. An additional, local maximum in the marginalized



probability is evident at an age of  $\sim 15$  days after maximum. The possibility that the SN was discovered at this later age corresponds to the same model for which the weaker maximum in the redshift PDF indicated that  $z = 1.55$ . This correlation between the redshift and age parameters is a natural consequence of the reddening of a SN Ia as it ages, and is shown in Figure 9.

Little additional constraint on the peak-luminosity/light-curve-shape parameter is gained from the fit, beyond what is provided by the luminosity function prior as seen in Figure 8. The  $B$ -band light curve of a typical SN Ia (e.g., Leibundgut 1988;  $\Delta m_{15}(B) = 1.1$  mag from Hamuy et al. 1996;  $\Delta = 0$  mag from Riess et al. 1998) provides an excellent fit to the SN 1997ff data when the other three parameters are set to their most likely values as seen in the middle panel of Figure 7. By relaxing the prior to  $\sigma_M = 0.50$  mag, we can better determine the degree to which the SN fit constrains its possible light-curve shape, and hence its correlated peak luminosity. As shown in Figure 8, the fit to the SN 1997ff data disfavors a fast declining, subluminescent SN Ia light-curve shape. Quantitatively this result excludes the hypothesis that SN 1997ff is as much as 0.5 mag subluminescent at peak.

On the bright limb of the peak-luminosity/light-curve-shape relationship, the constraints are nearly parallel to the luminosity function prior. The bright limb is defined by spectroscopically peculiar SNe Ia known as SN 1991T-like events (Filippenko et al. 1992a; Phillips et al. 1992; Li et al. 1999), which may be overluminous by 0.3–0.6 mag. It is important to note that SNe Ia are neither observed nor expected to reach peak magnitudes of more than  $\sim 0.6$  mag brighter than the typical (Hamuy et al. 1996; Höflich & Khokhlov 1996). Therefore, we do not consider light-curve shape models which are extrapolated beyond the most luminous SNe Ia observed locally.

Of critical importance to cosmological hypothesis testing is the determination of the luminosity distance to such high-redshift SNe Ia. Because of the significant correlation between the distance and photometric redshift parameters, and the need to use both of these parameters for cosmological applications, we determined the 2-D PDF for distance and redshift, simultaneously. This function is shown in Figure 10 for the different priors described above. Although it is preferable to include prior information from the galaxy photometric redshift estimate and the observed luminosity function of SNe Ia, the constraints shown in the distance-redshift plane are only minimally improved with this information and our subsequent conclusions are insensitive to these priors.

We also determined the likelihood function for the distance assuming the tentative spectroscopic redshift. We find  $m - M = 42.15 \pm 0.34$  mag. This likelihood function is quite Gaussian within the  $2\sigma$  boundaries, but flattens beyond for shorter distances (corresponding to an older discovery age) and steepens beyond for longer distances (corresponding to a discovery near maximum). If we assume the tentative spectroscopic redshift, we find the age of discovery to be  $6 \pm 2$  days after  $B$ -band maximum and tighter constraints on the peak-luminosity/light-curve-shape parameter. For the latter, we find the SN to be  $0.05 \pm 0.20$  mag fainter at peak than average, which makes it a highly typical supernova.

### 3.3. Cosmological Constraints

In Figure 11 we show the redshift and distance data (i.e., the Hubble diagram) for SNe Ia as presented by the Supernova Cosmology Project (Perlmutter et al. 1999) and the High- $z$  Supernova Search Team (Riess et al. 1998). These data have been binned in redshift to depict the statistical leverage of the SN Ia sample. Overplotted are the cosmological models  $\Omega_M = 0.35, \Omega_\Lambda = 0.65$  (favored),  $\Omega_M = 0.35, \Omega_\Lambda = 0.0$  (open),  $\Omega_M = 1.00, \Omega_\Lambda = 0.0$  (Einstein–de Sitter), and an astrophysical model representing a progressive dimming in proportion to redshift due to grey dust or simple evolution within an open cosmology. This model is further described in §4.2. All data and models are plotted as their difference from an empty Universe ( $\Omega_M = 0.0, \Omega_\Lambda = 0.0$ ).

All models are equivalent in the limit of  $z = 0$ . Differences in the models are considerable and detectable at  $z > 0.1$ . Evidence for a significant dark energy density and current acceleration is provided by the excessive faintness of the binned data with  $0.3 < z < 0.8$  compared to the open model, a net difference of  $\sim 0.25$  mag.

The lack of SNe Ia at an independent redshift interval, beyond  $z = 1$ , provides only the slimmest of margins for inferring the need for dark energy. An alternative explanation for the faintness of SNe Ia at  $z \approx 0.5$  is a contaminating astrophysical effect. Two often-cited candidates for these effects are SN evolution and grey intergalactic dust. Although direct tests for these effects have thus far yielded little evidence to support either (Riess 2000; Riess et al. 2000), the standard of proof for accepting vacuum energy (or quintessence) is high. A more powerful test for any astrophysical effect which continues to dim SNe at ever greater redshifts is to observe SNe Ia at  $z > 1$  (Filippenko & Riess 2000). At these redshifts, the Universe was more compact and familiar gravity would have dominated cosmological repulsion. The resulting deceleration at these redshifts would be apparent as a *brightening* of SNe Ia relative to a coasting cosmology or to the aforementioned astrophysical effects. The redshift of SN 1997ff is high enough to probe this earlier epoch and together with the distance measurement provides the means to discriminate between these hypotheses.

In Figure 11 we show the constraints derived from SN 1997ff. In the redshift-distance plane the principal axes of the error matrix from the photometric analysis are not quite perpendicular and the confidence contours are complex. Because there is only one object available in this highest redshift interval we prefer to interpret Figure 11 with broad brushstrokes.

SN 1997ff is brighter by  $\sim 1.1$  mag (and therefore closer) than expected for the persistence of a purported source of astrophysical dimming at  $z \approx 0.5$  and beyond. The statistical confidence of this statement is high ( $> 99.99\%$ ). *This conclusion supports the reality of the measured acceleration of the Universe from SNe Ia at  $z \approx 0.5$  by excluding the most likely, simple alternatives.* To avoid this conclusion requires the addition of an added layer of astrophysical complexity (e.g., intergalactic dust which dissipates in the interval  $0.5 < z < 1.7$ , or luminosity evolution which is suppressed or changes sign in this redshift interval). Other astrophysical effects such as a change in the SN Ia luminosity distance due to a change in metallicity with redshift are also disfavored

(Shanks et al. 2001). Systematic challenges to these conclusions are addressed in §4.

Other cosmological models which predict a relative dimming of SNe Ia at  $z > 1$  such as the “quasi-steady state hypothesis” appear to be in disagreement with this observation (Banerjee et al. 2000; Behnke et al. 2001). Similarly, models with relatively high vacuum energy and relatively low mass density are excluded (e.g.,  $\Omega_\Lambda \approx 1$ ,  $\Omega_M \approx 0$ ). If we assume an approximately flat cosmology as required by observations of the CMB, and a cosmological constant-like nature for dark energy, the observations of SN 1997ff disfavor  $\Omega_\Lambda > 0.85$  or alternately  $\Omega_M < 0.15$ .

SN 1997ff also provides an indication that the Universe was decelerating at the time of the supernova’s explosion. To better understand this likelihood, in Figure 12 we show the redshift-distance relation of SNe Ia compared to a family of flat,  $\Omega_\Lambda$  cosmologies. For such cosmologies, the transition redshift between the accelerating and decelerating epochs occurs at a redshift of  $[2\Omega_\Lambda/\Omega_M]^{1/3} - 1$  (M. Turner, 2001, private communication). For increasing values of  $\Omega_\Lambda$ , the transition point (i.e., the coasting point) occurs at increasing redshifts. The highest value of  $\Omega_\Lambda$  which is marginally consistent with SN 1997ff is  $\Omega_\Lambda=0.85$  (at the  $\sim 3\sigma$  confidence level), for which the transition redshift occurs at  $z = 1.25$ , significantly below the redshift of SN 1997ff. For the Universe to have commenced accelerating before the explosion of SN 1997ff requires a value of  $\Omega_\Lambda > 0.9$ , a result which is highly in conflict with the SN brightness. We conclude that, within the framework of these simple but plausible cosmological models, SN 1997ff exploded when the Universe was still decelerating. Indeed, the increase in the measured luminosity distance of SNe Ia between  $z \approx 0.5$  and  $z \approx 1.7$ , a factor of 4.0, is significantly smaller than in most eternally coasting cosmologies (e.g.,  $\Omega_M = 0$ ,  $\Omega_\Lambda = 0$ ) and appears to favor the empirical reality of a net deceleration over this range in redshift. However, a rigorous and quantitative test of past deceleration requires a more complete consideration of the possible nature of dark energy and is beyond the scope of this paper.

The above conclusions are unchanged if we adopt the tentative spectroscopic redshift of the SN host in place of the photometric redshift indicators (in Figures 11 and 12 the contours would be replaced by a point at  $z = 1.755$ ,  $\Delta(m - M) = -0.74 \pm 0.34$ ). In this case the redshift uncertainty is greatly diminished and the distance uncertainty is mildly reduced. However, the dominant source of statistical uncertainty in the testing of cosmological hypothesis remains the distance uncertainty, not the redshift uncertainty.

A great deal of theoretical effort has recently been expended to understand the nature of dark energy. Some of the possibilities include Einstein’s cosmological constant, a decaying scalar field (“quintessence”; Peebles & Ratra 1988; Caldwell et al. 1998), and so on. A large sample of SNe Ia distributed over the redshift interval of  $0.5 < z < 2.0$  could empirically break degeneracies between these models (by distinguishing among different average equations of state,  $w = P/\rho c^2$ , where  $P$  is the pressure and  $\rho$  is the density) if theory alone is insufficient to explain dark energy. SN 1997ff is in the right redshift range to discriminate between different dark-energy models, and if one assumes that high-redshift SNe are tracing the cosmological model and not an astrophysical

effect, then SN 1997ff may be useful for this task. However, the large uncertainty present in the measurement of only one SN Ia provides very little leverage to discriminate between dark-energy models at this time.

## 4. Discussion

The results of §3 indicate that SN 1997ff is the most distant SN Ia observed to date with a redshift of  $z = 1.7_{-0.15}^{+0.1}$ . Moreover, an estimate of its luminosity distance is consistent with an earlier epoch of deceleration and is inconsistent with astrophysical challenges (e.g., simple evolution or grey dust) to the inference of a currently accelerating Universe from SNe Ia at  $z \approx 0.5$ . In this section we explore systematic uncertainties in these conclusions.

### 4.1. SN Classification

SNe are generally classified by the presence or absence of characteristic features in their spectra. For example, SNe Ia are distinguished by the absence of hydrogen lines and the presence of Si II  $\lambda 6150$  absorption (see Filippenko 1997 for a review). Unfortunately, our inability to observe the defining regions of a SN SED at high redshift necessitates the use of additional indicators of SN type.

However, an alternate way to discriminate some SNe Ia is from the morphology of their host galaxy and its associated star-formation history. While all types of SNe have been observed in late-type galaxies, *SNe Ia are the only type to have been observed in early-type galaxies*. Although this lore is well known by experienced observers of SNe, this correlation is empirically apparent from an update of the Asiago SN catalog (Cappellaro et al. 1997; Asiago website) and can be seen in Figure 13. Of the  $>1000$  SNe whose type and host galaxy morphologies are all well-defined and have been classified in the modern scheme, there have been no core-collapse SNe observed in early-type galaxies (that is, only SNe Ia have been found in such galaxies). All  $\sim 40$  SNe in elliptical hosts, and classified since the identification of the SN Ia sub-type, have been SNe Ia. The same homogeneity of type is true for the  $\sim 40$  SNe classified in S0 hosts. Core-collapse SNe (types II, Ib, and Ic) first appear along the Hubble sequence in Sa galaxies, and even within these hosts they form a minority and their relative frequency to SNe Ia is suppressed by a factor of  $\sim 6$  compared to their presence in late-type spirals (Cappellaro et al. 1997, 1999). Evolved systems lose their ability to produce core-collapse SNe.

The explanation for this well-known observation is deeply rooted in the nature of supernova progenitors and their ages. Unlike all other types of SNe which result from core collapse in massive stars, SNe Ia are believed to arise from the thermonuclear disruption of a white dwarf near the Chandrasekhar limit and thus occur in evolved stellar populations (see Livio 2000 for a review). The loss of massive stars in elliptical and S0 galaxies, without comparable replacement, quenches

the production of core-collapse SNe, while SNe Ia, arising from relatively old progenitors, persist. From the host type of SN 1997ff we might readily conclude, as did GNP99, that it is of Type Ia.

However, more careful consideration is needed to classify SN 1997ff. Due to its high redshift, we need to determine the degree of ongoing star formation and hence the likelihood of the appearance of a core-collapse SN from a young, massive star. While the question of how and when elliptical galaxies form and evolve is beyond the scope of this paper, we are only concerned with the nature of the star formation history and stellar populations in the host of SN 1997ff.

One study of the host galaxy was made previously by Dickinson (1999; see also Dickinson et al. 2001), who used IR NICMOS photometry to compare the rest-frame  $B - V$  colors of high-redshift HDF-N ellipticals to those expected for different formation and evolution scenarios. Dickinson found the host and another nearby red elliptical to have rest-frame  $B - V$  colors consistent with a burst of star formation at  $z \approx 4$  or 5 followed by passive evolution.

Here we extend this analysis by comparing the complete ultraviolet-optical-infrared SED of the host galaxy to Bruzual & Charlot (1993) population synthesis models. The upper panel of Figure 14 superimposes the galaxy photometry with models that assume a single, short burst of star formation with a Salpeter initial mass function. Such a model has negligible ongoing star formation after the initial burst, and thus its rest-frame ultraviolet (UV) to optical colors redden as quickly as possible. After 1 Gyr has elapsed, this model approximately matches the observed-frame colors of the host galaxy; a burst occurring 0.5 Gyr or 2.0 Gyr before the SN appears too short and too long, respectively. We expect very few remaining massive stars  $\geq 1$  Gyr after the cessation of star formation, and therefore a negligible chance that SN 1997ff could be a core-collapse SN (whose progenitors live for less than 40 Myr). An alternative history would extend the star-formation timescale, providing a small residual of ongoing star formation to boost the UV flux while allowing the rest-frame optical colors to redden to match the  $IJK$  photometry. The bottom panel of Figure 14 shows such a model, with an exponential star-formation timescale of 0.3 Gyr. This model matches the observed SED at an age between 2.0 and 2.5 Gyr (with the far-UV limit favoring the older age). Normalized to the  $H$ -band magnitude of the galaxy, and assuming  $\Omega_M = 0.3$ ,  $\Omega_\Lambda = 0.7$ , and  $H_0 = 70 \text{ km s}^{-1} \text{ Mpc}^{-1}$  to compute the luminosity distance, this model provides an ongoing star formation rate of 0.7 to 0.2  $M_\odot \text{ yr}^{-1}$  at the time SN 1997ff exploded [ $(2.4\text{--}10) \times 10^{-4}$  times the initial rate]. The remaining population of massive stars should produce 0.004 to 0.001 core-collapse SNe per year (in the rest frame). We employ a more empirical route to determine the expected rate of SNe Ia due to our inability to identify conclusively their progenitor systems. Estimates for the rate of SNe Ia at high redshift from Pain et al. (1996) yield 0.48 SNe Ia per century per  $10^{10}$  solar blue luminosities ( $H_0 = 70 \text{ km s}^{-1} \text{ Mpc}^{-1}$ ). Sullivan et al. (2000) and Kobayashi, Tsujimoto, & Nomoto (2000) predict a rise in this rate by a factor of  $\sim 2$  at the redshift of SN 1997ff. The host galaxy luminosity is  $M_B = -21.9$ , and hence we expect a rate of  $\sim 0.07$  SNe Ia per year. We thus expect the host to produce 20 to 70 times as many SNe Ia as core-collapse SNe at the time SN 1997ff exploded (with the far-UV limit favoring the larger ratio), favoring its classification as a SN Ia independent of the cosmological model.

A longer timescale of star formation pushes the time of the initial burst uncomfortably close to the formation of globular clusters without significantly altering the expected production ratio of core-collapse SNe to SNe Ia.

The very tentative identification of a noisy spectral feature with [O II] emission would provide an [O II] flux  $f([\text{O II}]) \approx 8.7 \times 10^{-18} \text{ erg s}^{-1}$ , with a very large uncertainty (at least 50%) due to its low  $S/N$ . As discussed by Kennicutt (1998), the conversion from [O II] line flux to star-formation rate is imprecise, and large variations in [O II]/ $H\alpha$  (as much as 0.5–1 dex) are seen among local galaxies. Nevertheless, adopting Kennicutt’s conversion for a Salpeter initial mass function (IMF), and assuming (as in §4.1) a cosmology with  $\Omega_M = 0.3$ ,  $\Omega_\Lambda = 0.7$  and  $H_0 = 70 \text{ km s}^{-1} \text{ Mpc}^{-1}$ , we estimate a host galaxy star-formation rate of  $2.6 M_\odot \text{ yr}^{-1}$  from the tentative [O II] line identification. This is 4 to 13 times larger than the rates we estimated from the broad-band photometric modeling, and would result in a rate of core-collapse SNe of  $\sim 0.01 \text{ yr}^{-1}$ , still a factor of  $\sim 10$  smaller than our estimate of the Type Ia SN rate. However, we consider the identification of this spectral feature as [O II] emission very tentative and the putative flux very uncertain, and therefore the calculation of its implied star-formation rate is highly speculative.

Another route to estimating the fraction of core-collapse progenitors comes from a direct conversion of rest-frame UV flux (e.g., from the  $B_{450}$  magnitude, which corresponds to roughly  $1650 \text{ \AA}$  in the host-galaxy rest frame at  $z = 1.7$ ) to star-formation rates, following the conversion for a Salpeter IMF from Kennicutt (1998). This yields an estimated star-formation rate of  $0.8 M_\odot \text{ yr}^{-1}$ , consistent with the results previously derived using an extended star-formation scenario. However, this value is likely to be an overestimate, since the standard conversion factor is estimated from models with constant star-formation rates, while the galaxy colors resemble those of an early-type galaxy whose current star-formation rate is almost certainly far lower than its past average. Some significant fraction of the UV light may therefore come from longer-lived stars, and less need be attributed to ongoing star formation.

A potentially powerful tool to discriminate between SN types comes from enlisting the observed SN data set. Both the High- $z$  Supernova Search Team and the Supernova Cosmology Project have relied on the photometric behavior of a SN when a useful spectrum was not available (Riess et al. 1998; Perlmutter et al. 1999). The distance-independent observables of color and light-curve shape have the potential to discriminate Type Ia SNe from other SN types. As discussed in §3.1, from the observed colors and decline of SN 1997ff we conclude that its photometric behavior is inconsistent with a Type II supernova at any redshift. Also, the scarcity of SNe IIn having similar photometric properties argues against SN 1997ff being a SN IIn on photometric grounds. In contrast, the goodness-of-fit between SN 1997ff and an empirical model of a SN Ia at  $z = 1.7$  discovered a week after maximum and with a typical light-curve shape (see middle panel of Figure 7) is highly consistent with the SN Ia identification (reduced  $\chi^2 = 0.5$  for  $\sim 10$  degrees of freedom). Coupled with the apparent consistency of the two photometric redshifts and the tentative spectroscopic redshift, we might consider the SN data to be the best arbiter of type.

Unfortunately, when using only photometric information it may be possible to confuse a SN Ia with a luminous SN Ic or SN Ib (Clocchiatti et al. 2000; Riess et al. 1998). However, SNe Ib and Ic are far rarer than SNe Ia (Cappellaro et al. 1997, 1999) and they are expected to arise from even more massive progenitors than SNe II (e.g., Wolf-Rayet stars); if so, these progenitors should be even less populous than those of SNe II in the comparatively red host of SN 1997ff. (However, the masses of progenitors of SNe II and SNe Ib/Ic can overlap, if the hydrogen envelope of the progenitor can be lost through mass transfer in a binary system; e.g., Filippenko 1997) Empirically, SNe Ib and Ic are only common in very late-type galaxies (i.e., Sc; Cappellaro et al. 1997, 1999), environments of marked contrast to the host of SN 1997ff. The rare, peculiar, highly luminous supernovae (“hypernovae”) that may be associated with gamma-ray bursts, such as SN 1998bw (e.g., Galama et al. 1998; Iwamoto et al. 1998; Woosley, Eastman, & Schmidt 1999), SN 1997cy (Germany et al. 2000; Turatto et al. 2000), and SN 1999E (Filippenko 2000), also seem to be produced by core collapse in very massive stars.

Based on the nature of the host galaxy (an evolved, red elliptical) and diagnostics available from the observed colors and temporal behavior of the SN, we find the most likely interpretation is that SN 1997ff was of Type Ia.

## 4.2. Caveats

Because we have employed the SN colors to seek constraints on the SN redshift and age at discovery, both of which are strong functions of SN color, we cannot employ the colors to determine if there is any reddening by interstellar dust. The HDF-N was chosen (at high Galactic latitude) in part to minimize foreground extinction, so we assume that Milky Way reddening of SN 1997ff is negligible. Similarly, given the evolved nature of the red, elliptical host, we assume negligible reddening by the host of the SN. However, the apparent consistency with past cosmological deceleration and the apparent inconsistency with contaminating astrophysical effects reported here would not be challenged by unexpected, interstellar reddening to SN 1997ff. To demonstrate this conclusion, we reddened the SN by  $A_B=0.25$  mag in the rest frame and recalculated the PDF in the distance-redshift plane. As shown in Figure 11, the fit is shifted along a “reddening vector” further away from the model of astrophysical effects or cosmological non-deceleration. While we consider solutions along the reddening vector less likely, they are important to bear in mind when assessing quantitative estimates of cosmological parameters based on the previous analysis.

Our empirical model of evolution or intergalactic grey extinction (in magnitudes) is highly simplistic (i.e., linear), and consists only of the product of a constant and the redshift. Relative to the empty cosmology ( $\Omega_M = 0, \Omega_\Lambda = 0$ ), this constant is chosen to be 0.3 mag per unit redshift to match the observed distances of SNe Ia at  $z \approx 0.5$ . The functional form of this model is the same as that derived by York et al. (2001) from the consideration of a dust-filled Universe and is shown to be valid for redshifts near unity. It also approximates the calculations of Aguirre (1999a,b). However, depending on the epoch when the hypothetical dust is expected to form, the optical

depth might be expected to drop at a redshift higher than two.

Evolution is far more difficult to model and predict (Höflich et al. 1998; Umeda et al. 1999a,b; Livio 2000). For this hypothetical astrophysical effect our model is that the amount of luminosity evolution would scale with the mean age available for the growth of the progenitor system (for  $z \approx 1$ ). While more complex parameterizations are possible, the salient feature of our simple luminosity evolution model is its monotonic increase with redshift.

Drell et al. (2000) considered somewhat more complex phenomenological models of evolution (in magnitudes) consisting of a variable offset and a variable coefficient multiplied by the logarithm of  $(1 + z)$ . While the functional form of this model may be less motivated by considerations of the natural scaling of the physical parameters involved (e.g., time or metallicity), the additional free parameters make it possible to empirically fit both the observed dimming ( $z \approx 0.5$ ) and the observed brightening ( $z \approx 1.7$ ) within a wider range of underlying cosmological models (e.g., Einstein–de Sitter). To test higher-order parameterizations of evolution than the one we considered here will require measurements of more distant SNe Ia in new redshift intervals.

As discussed in Appendices A and B, constraints derived from the photometry of SN 1997ff can be recovered from any of the methods used to characterize the relationship between SN Ia light curves, color curves, and luminosity. To test the sensitivity of our analysis to the light-curve shape method employed, we rederived the SN constraints in §3 using the “stretch method” described by Perlmutter et al. (1997). The results were in excellent agreement with those presented using the MLCS method (Riess et al. 1998) in §3. The only noteworthy exception is that the constraints on the expected luminosity and distance of SN 1997ff were somewhat narrower for the stretch-method analysis. The explanation for this difference can be found in the calibration of the relationship between the peak luminosity and light-curve shape used by each method. The stretch method expects a somewhat smaller change in peak luminosity for a given variation in light-curve shape than the MLCS method. For the range of possible light-curve shapes allowed by the quality of the fit to the SN 1997ff data, the stretch method therefore predicts a smaller variation in luminosity (and hence distance) for SN 1997ff than the MLCS method. The cosmological conclusions reported here are supported by either method.

Sample selection biases can be important factors to consider when employing sources detected in a magnitude-limited survey (e.g., Li et al. 2001). However, because cosmological measurements from SNe Ia are generally based on the *difference* in the apparent luminosities of SNe from such surveys, a propagated bias in the cosmological measurements is greatly diminished (Schmidt et al. 1998; Riess et al. 1998; Perlmutter et al. 1999). In addition, the relatively low *intrinsic* scatter of SN Ia distance measurements ( $\sigma = 0.15$  mag) further reduces such biases. Monte Carlo simulations of these biases indicate that the appropriate corrections to the measured distance moduli are  $< 0.05$  mag, negligible compared to the statistical uncertainties for SN 1997ff presented here.

It is important to devote special consideration to the likelihood that SN 1997ff resembles the overluminous and slow declining SN 1991T (Filippenko et al. 1992a). An unexpected



overluminosity of SN 1997ff would result in an overestimation of the apparent disagreement with an astrophysical source of dimming. The best estimate of the overluminosity of SN 1991T is  $0.3 \pm 0.3$  mag based on a recent determination of the Cepheid distance to the host using HST (Saha et al. 2001). If SN 1997ff were unexpectedly overluminous by this amount, it would still remain brighter than expected for the dust or simple evolution model (by about 0.8 mag), but the significance of the difference would be reduced. However, the possibility that SN 1997ff matches SN 1991T-like SNe is explicitly included in the analysis in §3 by comparing the fit between the photometry of the former and the latter (and by employing the widest luminosity prior). The good fit between SN 1997ff and a typical SN Ia disfavors its identification with the slower declining SN 1991T. Empirically, SN 1991T-like events appear to favor hosts with younger stellar populations (Hamuy et al. 2000; Howell 2000), but this diagnostic is not as useful as the observed light curve shape in determining the likelihood that SN 1997ff resembles SN 1991T.

Clustering of mass in the Universe can cause the line of sight to most SNe to be underdense relative to the mean, while an occasional supernova may be seen through an overdense region. In Riess et al. (1998) and Perlmutter et al. (1999), stochastic lensing which decreased typical fluxes due to underdense lines of sight to the SNe was considered and found to have little effect on the cosmological measurements. The typical deamplification would be larger at  $z \approx 1.7$  and may approach a 10%–15% decrease in the observed brightness of a typical SN such as SN 1997ff (Holz 1998). For a large sample of SNe, the mean would provide an unbiased estimate of the unlensed value, but for a single SN, median statistics are more robust and deamplification of SN 1997ff is applicable.

Lensing by the foreground large-scale structure can also alter the apparent brightness of a distant supernova (Metcalf & Silk 1999) in the opposite sense of the preceding consideration. There is a pair of galaxies in the foreground of SN 1997ff at  $z = 0.56$ , with a separation of  $\sim 3''$  and  $5.5''$  from the SN. If we assume  $H_0 = 70 \text{ km s}^{-1} \text{ Mpc}^{-1}$ ,  $\Omega_M = 0.3$ , and  $\Omega_\Lambda = 0.7$ , these galaxies are found at projected distances of  $\sim 20$  and  $35$  kpc in the lens plane, and have approximately  $L^*$  luminosity, with  $M_V \approx -21$ , implying a velocity dispersion of  $\sim 200 \text{ km s}^{-1}$ . Assuming that the two galaxies have an approximately isothermal mass distribution, the resulting magnification of SN 1997ff would be  $\sim 0.3$  mag, in good agreement with the results of Lewis & Ibata (2001). However, without detailed knowledge of the form of the mass potential, it is not possible to recover the precise amplification (and to accurately correct the measured luminosity). Our estimate is only an approximation since the mass profile could fall off more steeply than assumed, or there could be an excess dark matter concentration associated with this pair of galaxies.

The  $H\alpha$  linewidth measured from the NIRSPEC spectrum for the nearby  $z = 0.56$  foreground galaxy is not significantly resolved at an instrumental resolution of about  $180 \text{ km s}^{-1}$  (FWHM), indicating  $\sigma \leq 90 \text{ km s}^{-1}$  with no indication of any rotational shear. This may not provide a strong constraint on the foreground galaxy mass, given uncertainties in the galaxy orientation (it appears to be somewhat face-on, although this is difficult to assess given its irregular morphology) and the fact that the line emission may only trace one star forming region within the galaxy rather

than the full potential well depth. We can only say that there is no immediate kinematic evidence from existing spectroscopy for a large mass for the closest foreground galaxy.

It is possible to derive a useful constraint on the *maximum likely* amplification of the SN by the closest foreground lenses by examining the shape of the host galaxy which would be stretched in the tangential direction by an amount that depends on the SN amplification. This calculation is performed in Appendix C and the results can be seen in Figure 15. From this calculation we conclude that the *lack* of apparent tangential ellipticity of the host galaxy (for the degree of specific SN amplification estimated above) is not very surprising ( $\sim 20\%$  of randomly selected hosts would exhibit as little tangential stretching as seen). However, significantly greater amplifications are not very likely; 0.6 or 0.8 mag amplifications would produce galaxies with no evidence of tangential stretching only in 6% and 3% of identical ensembles, respectively. The observed roundness of the image of the host galaxy, with an axis ratio of 0.85, is further circumstantial evidence against the presence of substantial lensing. While unremarkable in the absence of lensing, such roundness is unusual in images produced from highly elliptical galaxies oriented so as to counteract the tangential stretching due to lensing. We estimate that only  $\sim 4\%$  of randomly selected hosts will look as round as observed in the presence of 0.4 magnitudes of amplification, and the fraction drops below 1% for a magnification of 0.8 mag. However, this test is more circumstantial and therefore less preferable than the tangential ellipticity test described in Appendix C.

Together, the specific and stochastic lensing cases result in a possible net  $\sim 0.2$  mag shift in the luminosity. This value is considerably smaller than the  $\sim 1$  mag observed difference between the SN luminosity and that expected for astrophysical contaminants (grey dust or evolution), although it is in the direction to reduce this spread. Thus, our cosmological conclusions appear robust to lensing effects, although we cannot rule out more exotic lensing scenarios (e.g., a massive dark matter sheet amplifying the SN but not shearing the host). Moreover, given that a  $\sim 0.2$  mag error due to lensing remains a potential source of systematic uncertainty, we discourage future attempts to refine the distance measurement to SN 1997ff without a careful consideration of the full impact of weak lensing. The challenge posed by disentangling the affects of lensing and apparent distance provide a strong impetus to collect more SNe Ia at  $z > 1$  to reduce the statistical impact of such degeneracies.

We note that the reported consistency with cosmological deceleration and the exclusion of the dust model or a simple evolution model for SN 1997ff would remain unchanged in light of a future, high-precision measurement of the redshift of the host if it is found to be within the redshift interval  $1.4 < z < 1.95$ . This interval is the range over which the SN data are even minimally consistent with the empirical models of SNe Ia. A future redshift determination which is inconsistent with this range would cast serious doubt on the interpretation of SN 1997ff as a familiar SN Ia or any conclusions based on this interpretation.

Finally, the detection of SNe Ia at high redshifts can potentially add valuable insights into the nature of the progenitors of SNe Ia. Unfortunately, with the single case of SN 1997ff, the

conclusions are not very restrictive, and perhaps even circular, since the fact that it occurred in an elliptical galaxy was used to infer that it is a SN Ia; many SNe Ia may be needed, preferably with spectroscopic confirmation, over a *range* of redshifts to constrain the progenitors of SNe Ia. The time allowed for the progenitor system of SN 1997ff to form and evolve is likely to be more than 1 Gyr (based on the star-formation history of the elliptical host) and less than about 4 Gyr (based on the time interval between the redshift of the SN and that of the initial formation of stars). However, we already know that the progenitors of *some* SNe Ia are very old ( $\sim 10^{10}$  yr), since they are found in present-day, gas-deficient, old elliptical galaxies. Also, it already appears that the progenitors of *most* SNe Ia are relatively young ( $\lesssim 1$  Gyr), since they are found with greatest frequency in late-type galaxies (Cappellaro et al. 1997, 1999) and might even exhibit a loose correlation with spiral arms (Bartunov, Tsvetkov, & Filimonova 1994).

## 5. Conclusions

1. SN 1997ff is the highest-redshift SN Ia observed to date, and we estimate its redshift to be  $\sim 1.7$ . This redshift is consistent with the measurements made from either the SN data, the 9-band photometric redshift of the host, or the tentative indication from the host-galaxy spectroscopy. The classification as a SN Ia is derived from observational and theoretical evidence that the evolved, elliptical host is deficient in the progenitors of core-collapse SNe. The classification is also supported by diagnostics available from the observed colors and temporal behavior of the SN.

2. The derived constraints for the redshift and distance of SN 1997ff are consistent with the early decelerating phase of a currently accelerating Universe and thus are a valuable test of a Universe with dark energy. The results are inconsistent with simple evolution or grey dust, the two most favored astrophysical effects which could mimic previous evidence for an accelerating Universe from SNe Ia at  $z \approx 0.5$ .

3. We consider several sources of potential systematic error including gravitational lensing, supernova misclassification, sample selection bias, and luminosity calibration errors. Currently, none of these effects alone appears likely to challenge our conclusions. However, observations of more SNe Ia at  $z > 1$  are needed to test more complex challenges to the accelerating Universe hypothesis and to probe the nature of dark energy.

We wish to thank Chris Fassnacht, Kailash Sahu, Nick Suntzeff, Bruno Leibundgut, Steve Beckwith, Sean Carroll, Harry Ferguson, Greg Aldering, and Casey Papovich for valuable contributions and discussions. We are indebted to Michael Turner for his efforts to refine our consideration of a past deceleration. Parts of this project were supported by grants GO-6473, GO-7817, and AR-7984 from the Space Telescope Science Institute, which is operated by the Association of Universities for Research in Astronomy, Inc., under NASA contract NAS 5-26555; we also acknowledge NASA support of the NICMOS GTO team. A.V.F. is grateful for a

Guggenheim Foundation Fellowship and for NSF grant AST-9987438. This work was supported by a NASA LTSA grant to PEN and by the Director, Office of Science under U.S. Department of Energy Contract No. DE-AC03-76SF00098. PEN also thanks NERSC for a generous allocation of computer time.

## APPENDICES

### A. SN and Cosmological Likelihood Function

Our goal is to define a simple formalism to combine the popular light-curve fitting methods with prior information (e.g., a likelihood function) in a statistically sound way. The motivation for this method is for application to sparse or inhomogeneous SN Ia data sets which can be augmented with additional information. Current light-curve fitting methods can include four free parameters (age, distance, extinction, and luminosity), and could include more such as a photometric redshift or an extinction law which can be constrained from SN colors. Alternatively, it may be desirable to discard the two parameters of distance and redshift in exchange for cosmological parameters such as  $H_0$ ,  $\Omega_m$ ,  $\Omega_\Lambda$ ,  $w$ , etc. However, data sets gathered at high redshift are often noisy, sparse, and inhomogeneous, and may provide a high or low degree of leverage on any of these parameters. It may be desirable to supplement the data set with prior information such as a host galaxy photometric redshift or a luminosity function, while adding no additional information to some parameters such as the age at discovery.

Of course, a powerful language for such formalism is Bayes’s theorem. In our case,

$$p(\mathbf{q}|\mathbf{D}) = \frac{p(\mathbf{D}|\mathbf{q})p(\mathbf{q})}{p(\mathbf{D})}, \quad (\text{A1})$$

where  $\mathbf{D}$  is a set of SN data and priors, and  $\mathbf{q}$  is a combination of SN or cosmological parameters we are trying to constrain. Because we have no prior constraints on  $\mathbf{D}$ , we have

$$p(\mathbf{q}|\mathbf{D}) \propto p(\mathbf{D}|\mathbf{q})p(\mathbf{q}). \quad (\text{A2})$$

In principle,  $\mathbf{q}$  should contain the set of all SN or cosmological parameters which cause our data to appear as they do, but in practice it is only necessary to include parameters to which our data set is sensitive. Here we consider the set of parameters  $\mu_B$  (apparent distance modulus),  $t_d$  (days past  $B$ -band maximum at the time of discovery),  $\Delta$  (the MLCS luminosity/light-curve-shape parameter; Riess et al. 1996), and  $z$  (the redshift). Also,  $\mathbf{D}$  is the set  $\mathbf{m}$  of magnitude measurements in Table 1 for SN 1997ff.

As a result we have

$$p(\mu_B, t_d, \Delta, z|\mathbf{m}) \propto \left( \prod_i \frac{1}{\sqrt{2\pi\sigma_{m,i}^2}} \right) \exp\left(-\frac{\chi^2}{2}\right) [p(t_d)p(\Delta|t_d)p(\mu_B|t_d, \Delta)p(z|\mu_B, t_d, \Delta)] \quad (\text{A3})$$

and  $\chi^2$  is defined as

$$\chi^2(\mu_B, t_d, \Delta, z) = \sum_i \frac{(\mu_B + M_B(\Delta, t_d, t_i, z) - m_i + K_i(z, t_i, t_d, \Delta))^2}{\sigma_{m_i}^2}. \quad (\text{A4})$$

The term  $M_B(\Delta, t_d, t_i, z)$  is an empirical light-curve model of a SN Ia in the  $B$  band. To compare an apparent magnitude measurement  $m_i$  at time  $t_i$  we compute the expected magnitude of a SN MLCS model  $\mathbf{M}_B(\Delta)$  at the rest-frame age relative to  $B$ -band maximum of  $(t_i - t_d)/(1 + z)$ . The term  $K_i(z, t_i, t_d, \Delta)$  is a cross-filter  $K$ -correction and is discussed extensively for SNe Ia elsewhere (Kim, Goobar, & Perlmutter 1996; Riess et al. 1998; Schmidt et al. 1998; Nugent, Kim, & Perlmutter 2001). It is determined by synthetically calculating the pseudocolor  $X - B$  (where  $X$  represents the passband F814W, F110W, or F160W blueshifted by  $1 + z$ ) using the SED of a SN Ia (with intrinsic colors appropriate to a SN Ia with a luminosity parameter of  $\Delta$ ) at an age relative to  $B$  maximum of  $(t_i - t_d)/(1 + z)$ .

The PDFs in brackets on the right-hand side of equation (A3) are priors in which we can include any desired amount of prior information about these parameters.  $p(t_d)$  is the prior distribution on the age at which the SN was discovered given no other information. A spectrum of a SN Ia can be used to set a prior constraint on the age (Riess et al. 1997), or without such information we would choose this prior to be constant.  $p(\Delta|t_d)$  is the observed luminosity function of SNe Ia.  $p(\mu_B|t_d, \Delta)$  is given by the area of the hypershell with a radius of  $\mu_B$ . In principle this prior, derived from the area of hypershells, is cosmology-dependent because the geometry of these hypershells is determined by the cosmological parameters. However, for SN data which are moderately constraining (such as is the case for SN 1997ff), the specific cosmology chosen has a negligible impact on the fits. If this were not the case, it would be necessary to substitute the “nuisance parameters” of distance and redshift for cosmological parameters and the additional constraint in the form of the equation of the luminosity distance (Schmidt et al. 1998). For now treating  $z$  and distance as independent, the term  $p(z|\mu_B, t_d, \Delta)$  contains the prior constraint on the redshift (such as a photometric redshift) and possibly a time dilation effect such as the  $1 + z$  expansion in time intervals (and hence the likelihood of finding a SN Ia at higher redshifts).

Either the  $\chi^2$  statistic or the *a posteriori* probability may be used in the usual ways to determine constraints on any combinations of the parameters  $\mathbf{q}$  (Press et al. 1992).

## B. Cross-Band $K$ -Corrections

For a full description of the  $K$ -corrections and the uncertainties involved with their application see Nugent et al. (2001). In what follows we briefly summarize the relevant issues which concern us here.

The magnitude of a SN Ia in filter  $y$  can be expressed as the sum of its absolute magnitude  $M_x$ , cross-filter  $K$ -correction  $K_{xy}$ , distance modulus  $\mu$ , and extinction due to dust in both the

host galaxy,  $A_x$ , and our galaxy,  $A_y$ :

$$m_y(t(1+z)) = M_x(t, s) + K_{xy}(z, t, s) + \mu(z, \Omega_M, \Omega_\Lambda, H_o) + A_x + A_y. \quad (\text{B1})$$

Here  $t$  refers to the epoch when the SN Ia is being observed and  $z$  is its redshift. The parameter,  $s$ , can be any parameter (or method) which is used to characterize the relationship between the light curves, colors, and luminosity of an individual SN Ia. For the MLCS method (Riess et al. 1996, 1998) this parameter would be the  $\Delta$  parameter, formally the peak absolute luminosity of the visual light curve (relative to a fiducial SN Ia). Alternatively it could be the  $\Delta m_{15}(B)$  parameter (Phillips 1993; Phillips et al. 1999) or the stretch-factor (as described in Perlmutter et al. 1997).

The spectral template used to produced the  $K$ -corrections was created by gathering together all the spectra of well-observed SNe Ia currently available to the authors. Especially important to these calculations were the SNe observed in the UV by *IUE* and *HST* (Cappellaro et al. 1995; Kirshner et al. 1993). A set of standard photometric templates was then created for a fiducial SN Ia as well as SNe Ia with values of  $s$  chosen to sample and span the observed range of SNe Ia in *UBVRI*. The spectra were then “flux calibrated” in order to reproduce the observed magnitudes of these template light curves by both adjusting the zero point of the flux scale and applying a slope correction to the flux so that each spectrum would have the correct color (Riess et al. 1996, 1998) ) for a particular phase. The slope correction was performed by altering the flux using the reddening law of Cardelli, Clayton, & Mathis (1989) (either making them bluer or redder accordingly). For the list of the SNe Ia and their corresponding *UBVRI* magnitudes see Nugent et al. (2001).

To determine the  $K$ -correction for a given value of  $s$  and  $z$ , the set of spectra were first flux calibrated (as described above) to match the fluxes of the set of template light curves described by the parameter  $s$ . The cross-band  $K$ -correction was then calculated according to the formulae of Kim, Goobar, & Perlmutter (1996; see also Schmidt et al. 1998). After identification of the observed bandpass and a rest-frame bandpass, a pseudocolor is numerically calculated. This pseudocolor is the difference in the magnitude of the SN in the rest-frame bandpass and the observed-frame bandpass, the latter blueshifted by  $(1+z)$ , and is calculated from the template SN spectrophotometry. These calculations are derived from spectrophotometry of SNe Ia at different phases and we interpolate these values to determine the correction at a given phase. Examples of these calculations are given in Table 2; they are uncertain to less than 10%.

### C. The Tangential Ellipticity Test for the SN Host Galaxy

Significant gravitational lensing due to galaxies close to the line of sight would be expected to cause a detectable distortion — primarily a tangential stretch — of the shape of the host galaxy. The observed tangential ellipticity can in turn be used to constrain the amplification due to

lensing. However, the intrinsic shape of the host galaxy is not known, and thus it is possible that the galaxy is intrinsically elongated in the radial direction, so that the final image does appear nearly round.

We can, however, apply a statistical test to determine the likelihood that we would be able to detect the tangential stretch. We ask how frequently, for a randomized distribution of the intrinsic (i.e., unlensed) parameters of the galaxy, the lensed image will appear to have as little tangential stretch as is observed. (Note that this test is one-sided, since we know that the lens causes a *tangential* stretch.)

For simplicity, we first limit our consideration to lensing from the nearest bright galaxy, about  $3''$  N and  $0.6''$  E of the host galaxy, and we assume a circularly symmetric, singular isothermal mass distribution. For a mass distribution of this form, images are not stretched radially, but only tangentially, and the amplification factor ( $\mu$ ) of the amplification is identical to the factor by which the tangential component of the host galaxy is stretched.

We define the *tangential ellipticity* of a

orientation angle  $\theta_I$ . Since there should be no physical interaction between lens and host galaxy, the orientation  $\theta_I$  is distributed randomly and uniformly in the allowed range  $0^\circ \leq \theta_I \leq 90^\circ$ . We draw the axis ratio  $(b/a)_I$  from the distribution observed by Lambas, Maddox, & Loveday (1992) for galaxies classified as ellipticals in the APM survey. Although this distribution is obtained for low-redshift objects, we expect it to be representative of the high-redshift host galaxy because the latter is observed in the near-IR (rest-frame optical) and does not appear significantly perturbed.

Figure 15 shows a subset ( $10^4$  of the  $10^6$  samples) of randomly selected combinations of the intrinsic axis ratio and orientation angle of simulated host galaxies. For several different hypothetical values of the SN amplification, a curve is shown indicating the combinations of the intrinsic axis ratio and orientation angle resulting in the observed tangential eccentricity of the SN host. Intrinsic values above each curve correspond to galaxies whose elongation and orientation are such as to produce a tangential ellipticity smaller than the observed value of 0.037. Since many ellipticals are intrinsically nearly round ( $b/a > 0.7$ ), for large assumed amplifications the intrinsic position angle must be very close to radial ( $\theta_I > 70^\circ$ ) if the observed ellipticity is to be as small as observed. Each curve is labelled with the assumed amplification (in magnitudes) of the SN and the fraction of randomly selected galaxies that fall above it, i.e., whose observed tangential ellipticity would be 0.037 or smaller.

The small degree of observed tangential ellipticity of the SN host provides a useful constraint for the maximum likely amplification of the SN. (This determination is independent of the estimate in §4.2 of the *expected* amount of net amplification of the SN by both stochastic and specific lensing,  $\sim 0.2$  mag.) For example, if we assumed that the SN was amplified by 0.6 mag by the foreground lens, we would conclude that we were relatively lucky (i.e., a 6% chance) to see such a small apparent tangential ellipticity for the host (a result which can occur for an E6 or E7 host galaxy intrinsically aligned within  $20^\circ$  of the radial orientation). The chance of seeing such a small apparent tangential ellipticity for an amplification which moves the SN from the dust-filled Universe model to its observed brightness ( $\sim 1.1$  mag) is less than 1%.

Interestingly, the calculations above have predictive power for the other close lens candidate, located  $5.3''$  from the host and also at  $z = 0.56$ . This galaxy lies only  $20^\circ$  from the radial axis joining the host and the closest lens. This lens would distort the host galaxy in a direction very similar to the one resulting from the closest lens.



## References

- Aguirre, A. 1999a, ApJ, 512, 19
- Aguirre, A. 1999b, ApJ, 525, 583
- Alard, C. 2000, A&AS, 114,363
- Aldering, G., et al. 1998, IAU Circ. 7046
- Balbi, A., et al. 2000, ApJ, 545, L1
- Banerjee, S. K., Narlikar, J. V., Wickramasinghe, N. C., Hoyle, F., & Burbidge, G. 2000, AJ, 119, 2583
- Barbon, R., Ciatti, F., & Rosino, L. 1979, A&A, 72, 287
- Bartunov, O. S., Tsvetkov, D. Yu., & Filimonova, I. V. 1994, PASP, 106, 1276
- Behnke, D., et al. 2001, arXive: gr-qc/0102039
- Bertin, E., & Arnouts, S. 1996, A&AS, 117, 393
- Branch, D., Romanishin, W., & Baron, E. 1996, ApJ, 465, 73 (Erratum: 467, 473)
- Bruzual, A. G., & Charlot, S. 1993, ApJ, 405, 538
- Budavári, T., Szalay, A. S., Connolly, A. J., Csabai, I., & Dickinson, M. 2000, AJ, 120, 1588
- Caldwell, R. R., Davé, R., & Steinhardt, P. J. 1998, Ap&SS, 261, 303
- Cappellaro, E., Turatto, M., & Fernley, J. 1995, IUE – ULDA Access Guide No. 6: Supernovae (The Netherlands: ESA)
- Cappellaro, E., Evans, R., & Turatto, M. 1999, A&A, 351, 459
- Cappellaro, E., et al. 1997, A&A, 322,431
- Cardelli, J. A., Clayton, G. C., & Mathis, J. S. 1989, ApJ, 345, 245
- Clocchiatti, A., et al. 2000, ApJ, 529, 661
- Cohen, J. G., et al. 2000, ApJ, 538, 29
- Coil, A., et al. 2000, ApJ, 544, L111
- Coleman, G. D., Wu, C.-C., & Weedman, D. W. 1980, ApJS, 43, 393 (CWW)
- Cox, C., Ritchie, C., Bergeron, E., MacKenty, J., & Noll, K. 1997, NICMOS STScI Instrument Science Report 97-07 (Baltimore: STScI)
- Curtis, D., et al. 2000, Supernova/Acceleration Probe (SNAP), proposal to DOE and NSF, <http://snap.lbl.gov/>
- de Bernardis, P., et al. 2000, Nature, 404, 955
- Dickinson, M. 1999, in *After the Dark Ages: When Galaxies were Young (the Universe at  $2 < z < 5$ )*, ed. S. Holt & E. Smith (New York: AIP), 122
- Dickinson, M., et al. 2001, in preparation
- Drell, P. S., Loredó, T. J., & Wasserman, I. 2000, ApJ, 530, 593
- Ferguson, H. C., Dickinson, M., & Williams, R. 2000, ARA&A, 38, 667
- Fernandez-Soto, A., Lanzetta, K. M., & Yahil, A. 1999, ApJ, 513, 34
- Filippenko, A. V. 1997, ARA&A, 35, 309
- Filippenko, A. V. 2000, in *Cosmic Explosions*, ed. S. S. Holt & W. W. Zhang (New York: AIP), 123
- Filippenko, A. V., & Riess, A. G. 2000, in *Particle Physics and Cosmology: Second Tropical*

- Workshop*, ed. J. F. Nieves (New York: AIP), 227
- Filippenko, A. V., et al. 1992a, *ApJ*, 384, L15
- Filippenko, A. V., et al. 1992b, *AJ*, 104, 1543
- Fruchter, A. S., & Hook, R. N. 1997, *Proc. SPIE*, 3164, 120
- Galama, T. J., et al. 1998, *Nature*, 395, 670
- Germany, L. M., Reiss, D. J., Sadler, E. M., & Schmidt, B. P. 2000, *ApJ*, 533, 320
- Gilliland, R. L., Nugent, P. E., & Phillips, M. M. 1999, *ApJ*, 521, 30 (GNP99)
- Gilliland, R. L., & Phillips, M. M. 1998, *IAU Circ.* 6810
- Hamuy, M., et al. 1996, *AJ*, 112, 2408
- Höflich, P., & Khokhlov, A. 1996, *ApJ*, 457, 500
- Höflich, P., Nomoto, K., Umeda, H., & Wheeler, J. C. 2000, *ApJ*, 528, 590
- Höflich, P., Wheeler, J. C., & Thielemann, F. K. 1998, *ApJ*, 495, 617
- Holz, D. E. 1998, *ApJ*, 506, 1
- Iwamoto, K., et al. 1998, *Nature*, 395, 672
- Jaffe, A., et al. 2001, *astro-ph/0007333*
- Kennicutt, R. C. 1998, *ARA&A*, 36, 189
- Kim, A., Goobar, A., & Perlmutter, S. 1996, *PASP*, 108, 190
- Kirshner, R., et al. 1993, *ApJ*, 415, 589
- Kobayashi, C., Tsujimoto, T., & Nomoto, K. 2000, *ApJ*, 539, 26
- Lambas, D. G., Maddox, S. J., & Loveday, J. 1992, *MNRAS*, 258, 404
- Leibundgut, B. 1988, PhD thesis, University of Basel
- Leibundgut, B., et al. 1993, *AJ*, 105, 301
- Lewis, G. F., & Ibata, R. A. 2001, *MNRAS*, submitted (*astro-ph/0104254*)
- Li, W., Filippenko, A. V., & Riess, A. G. 2001a, *ApJ*, 546, 719
- Li, W. D., et al. 1999, *AJ*, 117, 2709
- Livio, M. 2000, in *Type Ia Supernovae: Theory and Cosmology*, eds. J. C. Niemeyer & J. W. Truran (Cambridge: Cambridge Univ. Press), 33
- McLean, I., et al. 1998, *Proc. SPIE*, 3354, 566
- Metcalf, R. B., & Silk, J. 1999, *ApJ*, 519, 1
- Modjaz, M., Li, W., Filippenko, A. V., King, J. Y., Leonard, D. C., Matheson, T., Treffers, R. R., & Riess, A. G. 2001, *PASP*, 113, 308
- Nomoto, K., Umeda, H., Hachisu, I., Kato, M., Kobayashi, C., & Tsujimoto, T. 2000, in *Type Ia Supernovae: Theory and Cosmology*, eds. J. C. Niemeyer & J. W. Truran (Cambridge: Cambridge Univ. Press), 63
- Nugent, P. 2000, in *Particle Physics and Cosmology: Second Tropical Workshop*, ed. J. F. Nieves (New York: AIP), 263
- Nugent, P. E., Kim, A., & Perlmutter, S. 2001, in preparation
- Oke, J. B., & Gunn, J. E. 1983, *ApJ*, 266, 713
- Oke, J. B., et al. 1995, *PASP*, 107, 375
- Pain, R., et al. 1996, *ApJ*, 473, 356

- Peebles, P. J. E., & Ratra, B. 1988, *ApJ*, 325, L17
- Perlmutter, S., et al. 1995, *ApJ*, 440, 41
- Perlmutter, S., et al. 1997, *ApJ*, 483, 565
- Perlmutter, S., et al. 1999, *ApJ*, 517, 565
- Pettini, M., Shapley, A. E., Steidel, C. C., Cuby, J.-G., Dickinson, M., Moorwood, A. F. M., Adelberger, K. L., & Giavalisco, M. 2001, *ApJ*, 554, in press (astro-ph/0102456)
- Phillips, M. M. 1993, *ApJ*, 413, L105
- Phillips, M. M., Lira, P., Suntzeff, N. B., Schommer, R. A., Hamuy, M., & Maza, J. 1999, *AJ*, 118, 1766
- Phillips, M. M., et al. 1992, *AJ*, 103, 1632
- Pinto, P. A., & Eastman, R. G. 2000, *ApJ*, 530, 744
- Press, W. H., Teukolsky, S. A., Vetterling, W. T., & Flannery, B. P. 1992, *Numerical Recipes in FORTRAN* (2nd ed.; Cambridge: Cambridge Univ. Press)
- Rana, N. C. 1979, *Ap&SS*, 66, 173
- Rana, N. C. 1980, *Ap&SS*, 71, 123
- Riess, A. G. 2000, *PASP*, 112, 1284
- Riess, A. G., Press, W.H., & Kirshner, R. P. 1996, *ApJ*, 473, 88
- Riess, A. G., et al. 1997, *AJ*, 114, 722
- Riess, A. G., et al. 1998, *AJ*, 116, 1009
- Riess, A. G., et al. 2000, *ApJ*, 536, 62
- Ruiz-Lapuente, P., & Canal, R. 1998, *ApJ*, 497, 57
- Saha, A., et al. 2001, *ApJ*, in press
- Sandage, A., & Hardy, E. 1973, *ApJ*, 183, 743
- Sawicki, M., Lin H., & Yee, H. 1997, *AJ*, 113, 1
- Schlegel, E. M. 1990, *MNRAS*, 244, 269
- Schmidt, B. P., et al. 1994, *ApJ*, 432, 42
- Schmidt, B. P., et al. 1998, *ApJ*, 507, 46
- Shanks, T., Allen, P. D., Hoyle, F., & Tanvir, N. R. 2001, in *New Cosmological Data and the Value of the Fundamental Parameters*, ed. A. N. Lasenby & A. Wilkinson (San Francisco: ASP), in press (astro-ph/0102450)
- Spinrad, H., Dey, A., Stern, D., Dunlop, J., Peacock, J., Jimenez, R., & Windhorst, R. 1997, *ApJ*, 484, 581
- Storrs, A., Hook, R., Stiavelli, M., Hanley, C., & Freudling, W. 1999. *NICMOS STScI Instrument Science Report 99-05* (Baltimore: STScI)
- Sullivan, M., Ellis, R., Nugent, P., Smail, I., & Madau, P. 2000, *MNRAS*, 319, 549
- Thompson, R. I., Storrie-Lombardi, L. J., Weymann, R. J., Rieke, M. J., Schneider, G., Stobie, E., & Lytle, D. 1999, *AJ*, 117, 17
- Tonry, J., et al. 1999, *IAU Circ.* 7312
- Turatto, M., et al. 2000, *ApJ*, 534, L57
- Umeda, H., Nomoto, K., Kobayashi, C., Hachisu, I., & Kato, M. 1999a, *ApJ*, 522, L43

- Umeda, H., Nomoto, K., Yamaoka, H., & Wanajo, S. 1999b, *AJ*, 513, 861  
Williams, R. E., et al. 1996, *AJ*, 112, 1335  
Woosley, S. E., Eastman, R. G., & Schmidt, B. P. 1999, *ApJ*, 516, 788  
York, T., et al. 2001, in preparation  
Yungelson, L. R., & Livio, M. 2000, *ApJ*, 528, 108

**Figure 1:** Color-composite images of the region of the HDF-N near the host of SN 1997ff. The WFPC2 images were taken during the HDF-N campaign (Williams et al. 1996) and the NICMOS images were taken during the GTO campaign (Thompson et al. 1999). The arrow indicates the SN host galaxy.

**Figure 2:** *HST* exposures obtained for SN 1997ff as a function of time in different bandpasses. Time in days (the abscissa) is given relative to December 23, 1997, the start of the HDF-N SN search with WFPC2 (GO 6473). The subsequent GTO campaign with NICMOS (Thompson et al. 1999; GTO 7235) and its preceding tests for guide-star suitability (7807) provided valuable coverage of the light curve of the SN found during the search. A subsequent NICMOS campaign (Dickinson et al. 2001; GO 7817) provided templates to remove the contaminating light of the host after the SN had faded.

**Figure 3:** SN 1997ff in F814W (*I*), F110W (*J*), and F160W (*H*). The images on the left show the region of the HDF-N near the SN host without the SN (template images). The images on the right show the difference in intensity between a SN image and the template image. Superimposed on this image are intensity contours. Spectroscopic redshifts (Cohen et al. 2000) are listed as exact while photometric redshifts (Budavári et al. 2000) are listed as approximate.

**Figure 4:** Photometric redshift estimate for the host of SN 1997ff. This estimate employs 6 photometric magnitudes from *HST* observations and 3 from ground-based observations (Budavári et al. 2000). The galaxy magnitudes are given in Table 1. The top panel shows the best fits for the CWW (galaxy SEDs), KL2 (eigenspectra), and KL5 (eigenspectra) models. The middle plot shows the sensitivity of the fit to the redshift. The bottom plot shows the biases which result from using only the WFPC2 data.

**Figure 5:** A comparison between the observed and expected near-IR colors of a SN Ia as a function of assumed redshift. For a given redshift, the color evolution is plotted beginning 15 days before maximum (bluest point) and again in 5-day intervals. SNe Ia redden with time, reach their reddest color at 25–30 days after maximum, and then become bluer by a few tenths of a magnitude. The relative size of the point scales with temporal proximity to *B* maximum. The observed colors of SN 1997ff at discovery and  $30/(1+z)$  days later puts strong constraints on the redshift and age of the SN.

**Figure 6:** Optical and near-IR spectroscopy of the host, HDF 4-403.0, from the Keck telescope. The upper panel shows the optical spectra of the SN host compared to the spectrum of an old, red elliptical galaxy, LBDS 53w091 ( $z = 1.55$ ; Spinrad et al. 1997) transformed to  $z = 1.755$ . A simple  $\chi^2$  minimization provides a possible match at a redshift for the SN host of  $z = 1.67$  to  $1.79$ , but this match is not robust. The bottom panel shows the near-IR spectroscopy of the host. An apparent weak emission line, if identified as [O II]  $\lambda 3727$ , would yield  $z = 1.755$ , but this redshift determination is tentative. A gradient in the detected continuum is apparent, with an increase to the red.

**Figure 7:** Comparison between the *B*-band light curve of a normal SN Ia and the observed data transformed to rest-frame *B* for different assumed redshifts and discovery ages. The observed SN colors, or, for the transformation to a fixed bandpass shown here, the *K*-corrections are a

strong function of redshift and SN age. The distance modulus may be constrained by offsetting the model light curve in magnitudes. A good fit between model and data only occurs in a narrow range of redshifts and ages as seen in the middle panel.

**Figure 8:** Marginalized probability density functions for SN Ia model parameters used to fit SN 1997ff. The top panel shows the PDF for the redshift constraints from the galaxy photometry, from the SN, and from both sources. The middle panel shows the constraint on the age of the discovery relative to  $B$  maximum. The bottom panel shows two forms of the observed luminosity function for SNe Ia and the constraints on the luminosity of SN 1997ff using the priors and the light-curve fits.

**Figure 9:** Confidence intervals for the discovery age (days relative to  $B$ -band maximum) and redshift of SN 1997ff. Because the observed SN colors are a strong function of both of these parameters, a high degree of correlation exists in their simultaneous determination.

**Figure 10:** Confidence intervals for the distance modulus ( $m - M$ ) and redshift of SN 1997ff. The intervals were calculated using the galaxy photometric redshift and the observed luminosity function of SNe Ia (optimal), neglecting the galaxy photometric redshift, and using a weak prior on SN Ia luminosities described in the text.

**Figure 11:** Hubble diagram of SNe Ia minus an empty (i.e., “empty”  $\Omega = 0$ ) Universe compared to cosmological and astrophysical models. The points are the redshift-binned data from the HZT (Riess et al. 1998) and the SCP (Perlmutter et al. 1999). Confidence intervals (68%, 95%, and 99%) for SN 1997ff are indicated. The modeling of the astrophysical contaminants to cosmological inference, intergalactic grey dust or simple evolution, is discussed in §4.2. The measurements of SN 1997ff are inconsistent with astrophysical effects which could mimic previous evidence for an accelerating Universe from SNe Ia at  $z \approx 0.5$

**Figure 12:** Same as Figure 11 with the inclusion of a family of plausible, flat  $\Omega_\Lambda$  cosmologies. The transition redshift (i.e., the coasting point) between the accelerating and decelerating phases is indicated and is given as  $[2\Omega_\Lambda/\Omega_M]^{1/3} - 1$ . SN 1997ff is seen to lie within the epoch of deceleration. This conclusion is drawn from the result that the apparent brightness of SN 1997ff is inconsistent with values of  $\Omega_\Lambda \geq 0.9$  and hence a transition redshift greater than that of SN 1997ff.

**Figure 13:** SN type versus host morphology as compiled by the Asiago catalog (Cappellaro et al. 1997). This set includes all SNe through SN 2001X for which a modern SN classification and galaxy classification are available.

**Figure 14:** Possible star-formation histories of the host of SN 1997ff compared to its observed SED. The upper panel shows the expected SED for a single burst of star formation occurring at 0.5 Gyr, 1 Gyr, and 2 Gyr before the explosion SN 1997ff. The favored age of 1 Gyr is long after the loss of the progenitors of core-collapse SNe. For a star-formation history consisting of a burst (lower panel) followed by continuous and exponential decay of extended star formation ( $\tau = 0.3$  Gyr), the expected ratio of SNe Ia to core-collapse SNe is between 20 and 70.

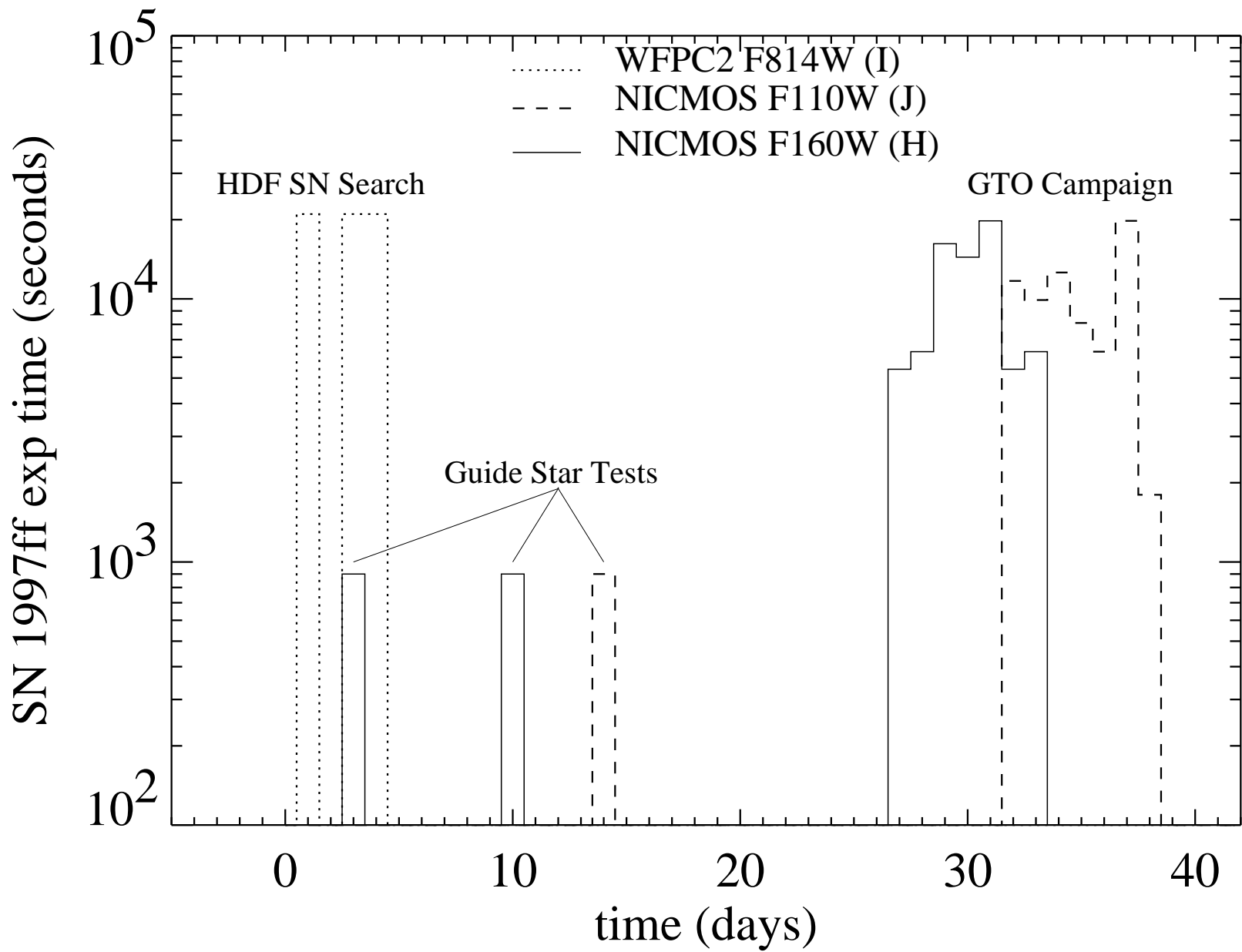
**Figure 15:** The tangential ellipticity test for the SN host galaxy. The points show a subset ( $10^4$  of the  $10^6$  samples) of randomly selected combinations of the intrinsic axis ratio and orientation angle of simulated host galaxies. For several different hypothetical values of the SN

amplification, a curve is shown indicating the combinations of intrinsic axis ratio and orientation angle resulting in the observed tangential eccentricity of the SN host. Each curve is labelled with a hypothetical amplification (in magnitudes) of the SN and the fraction of randomly selected galaxies whose observed tangential ellipticity would be as small as that observed or smaller (see Appendix C).

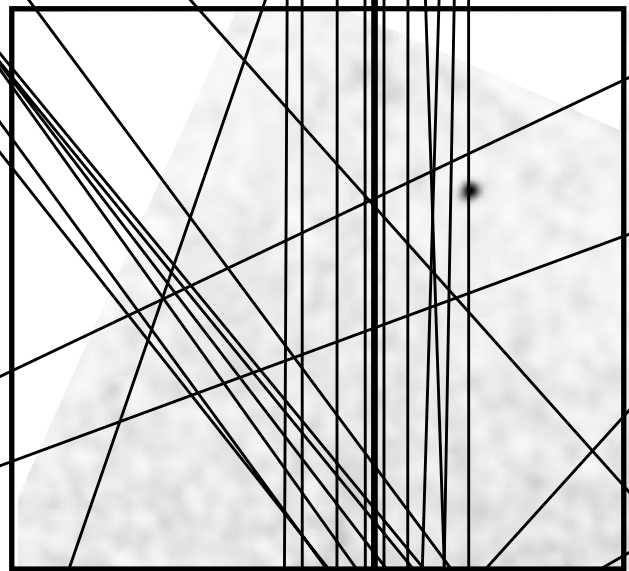
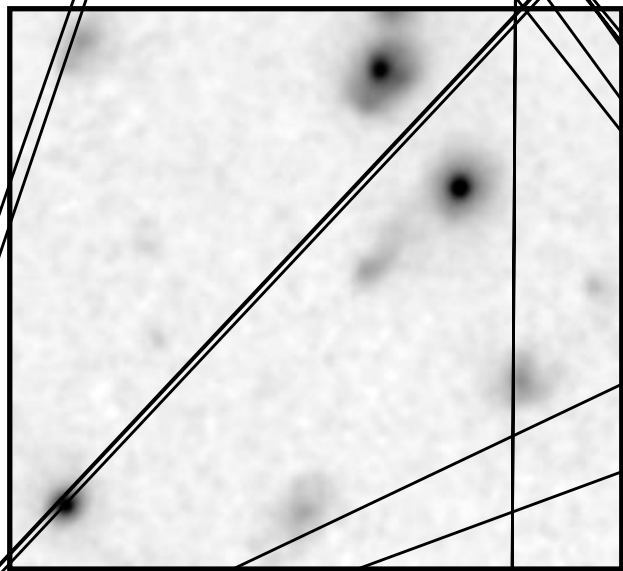
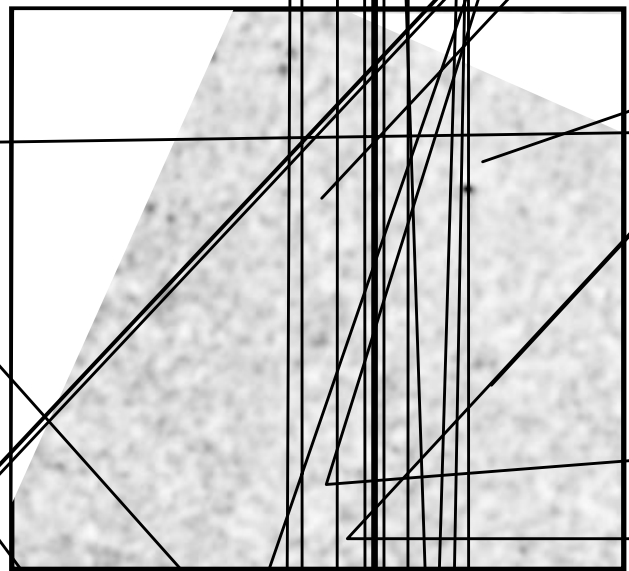
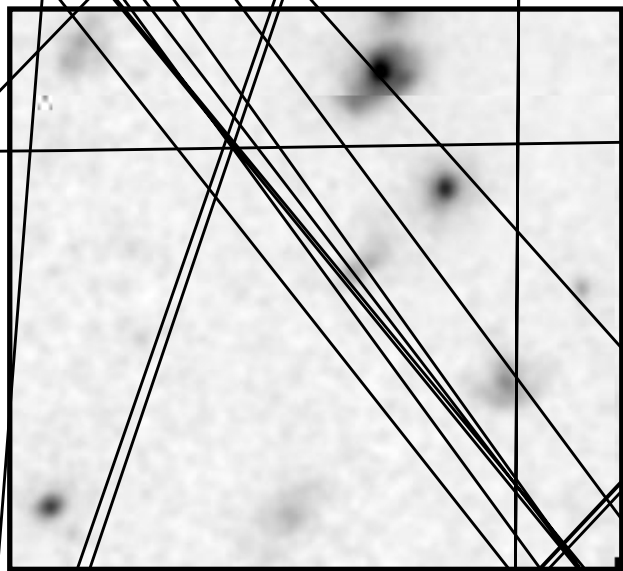
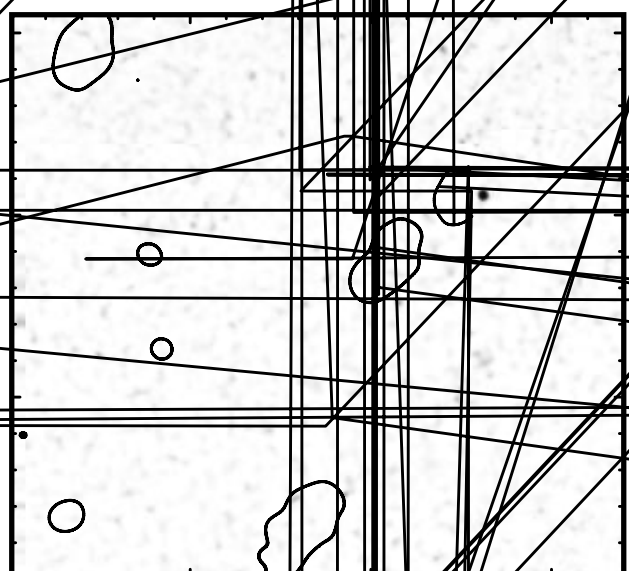
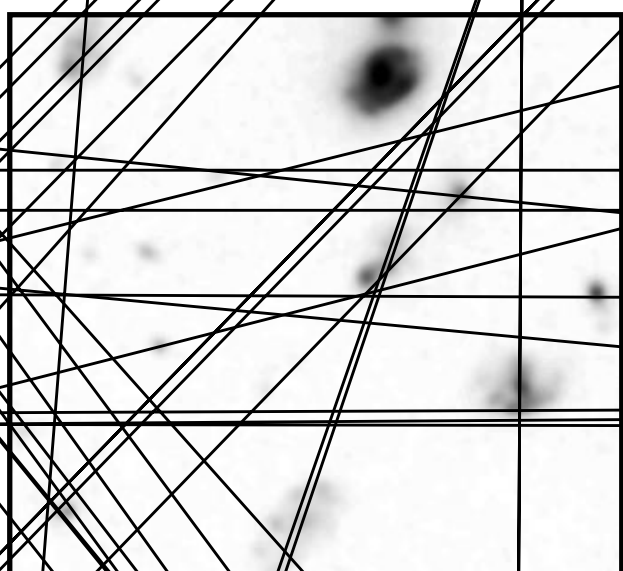
This figure "fig1.gif" is available in "gif" format from:

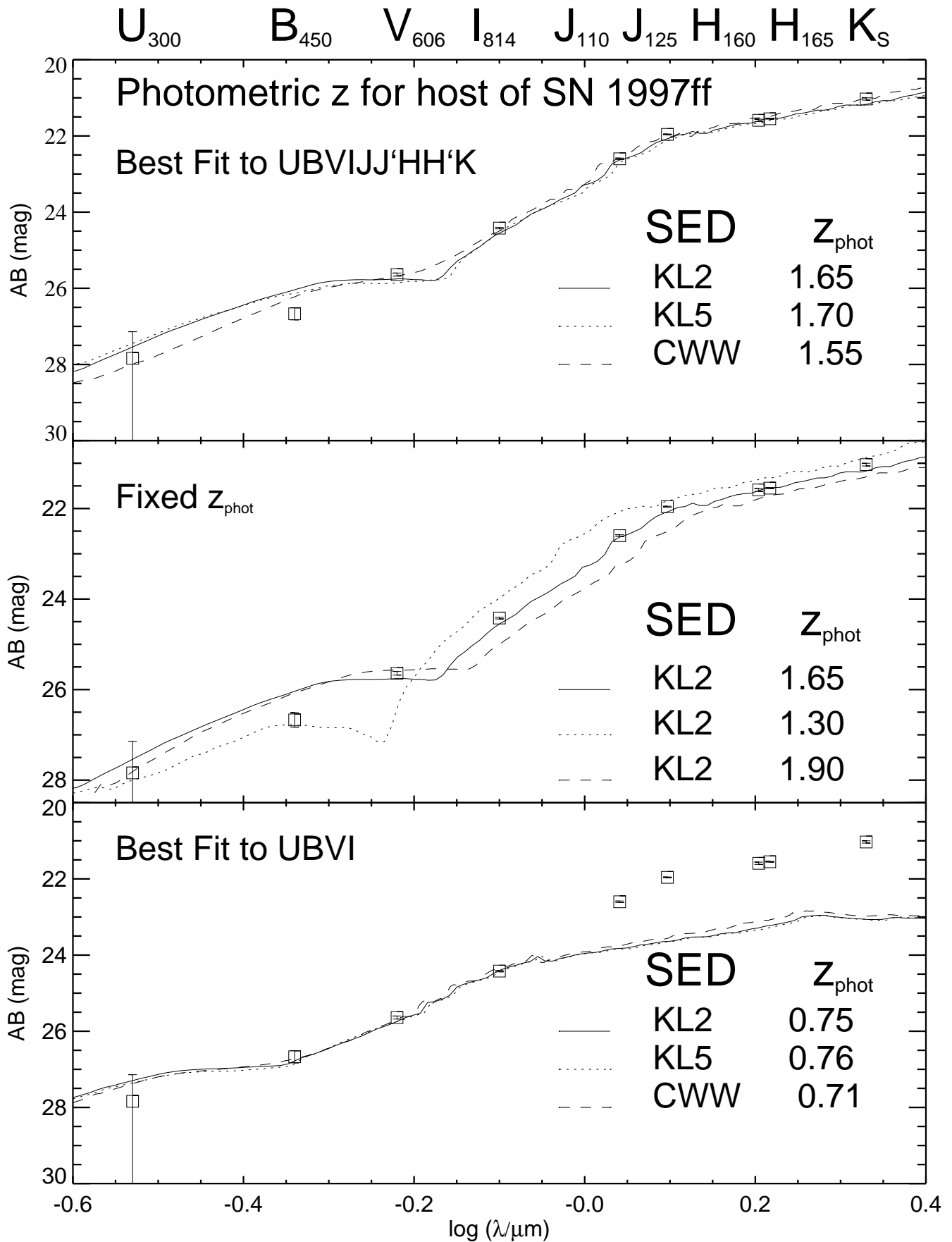
<http://ttn.lanl.gov/ps/astro-ph/0104455>

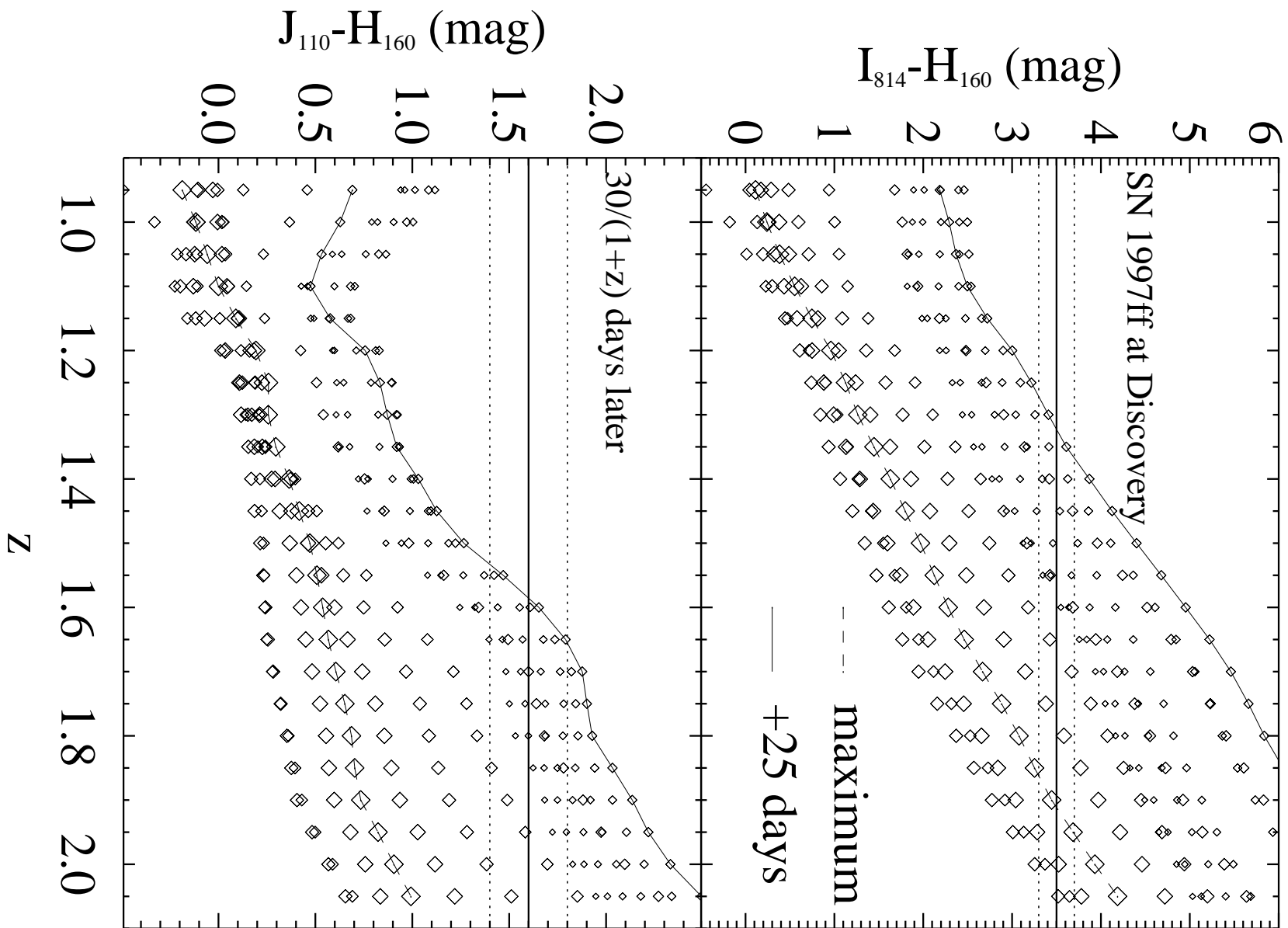


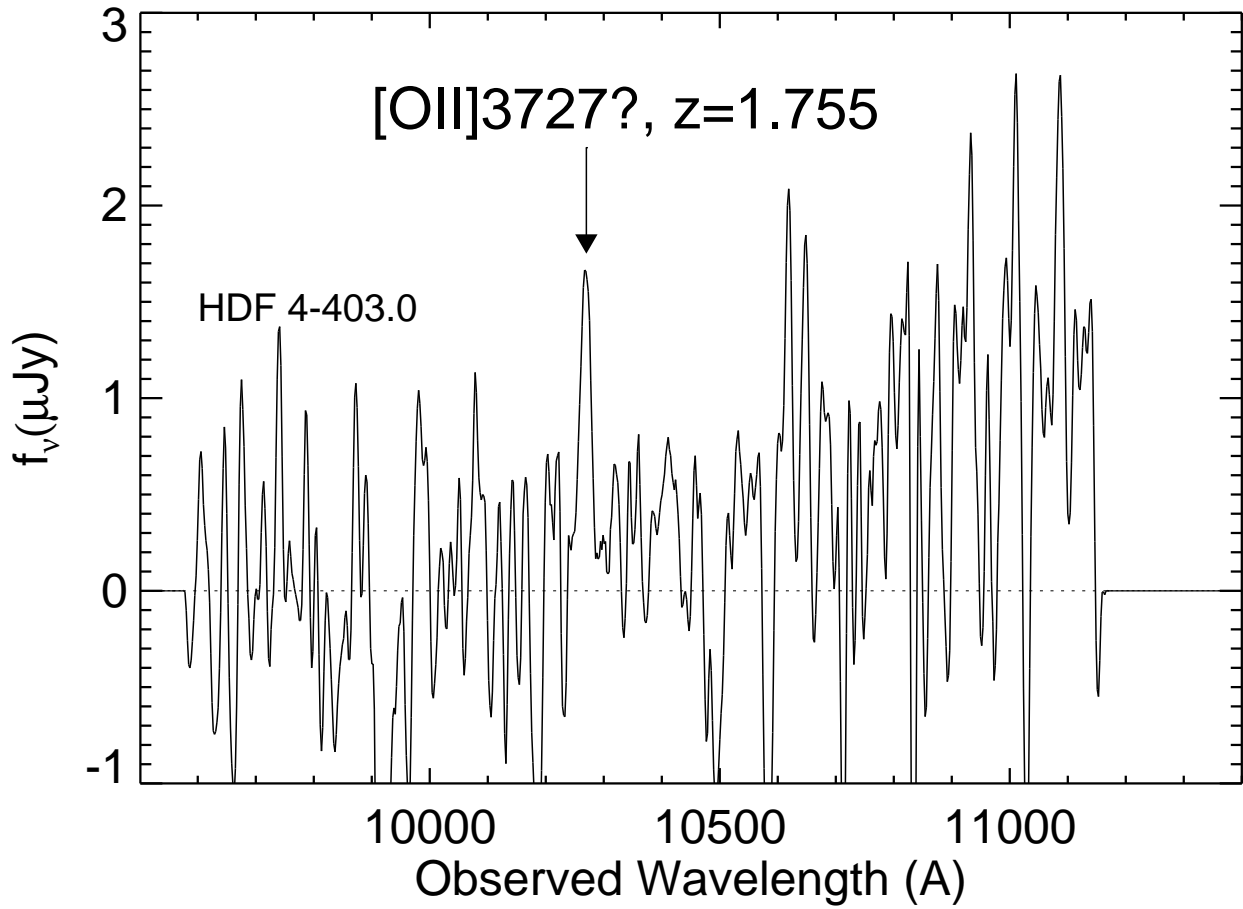
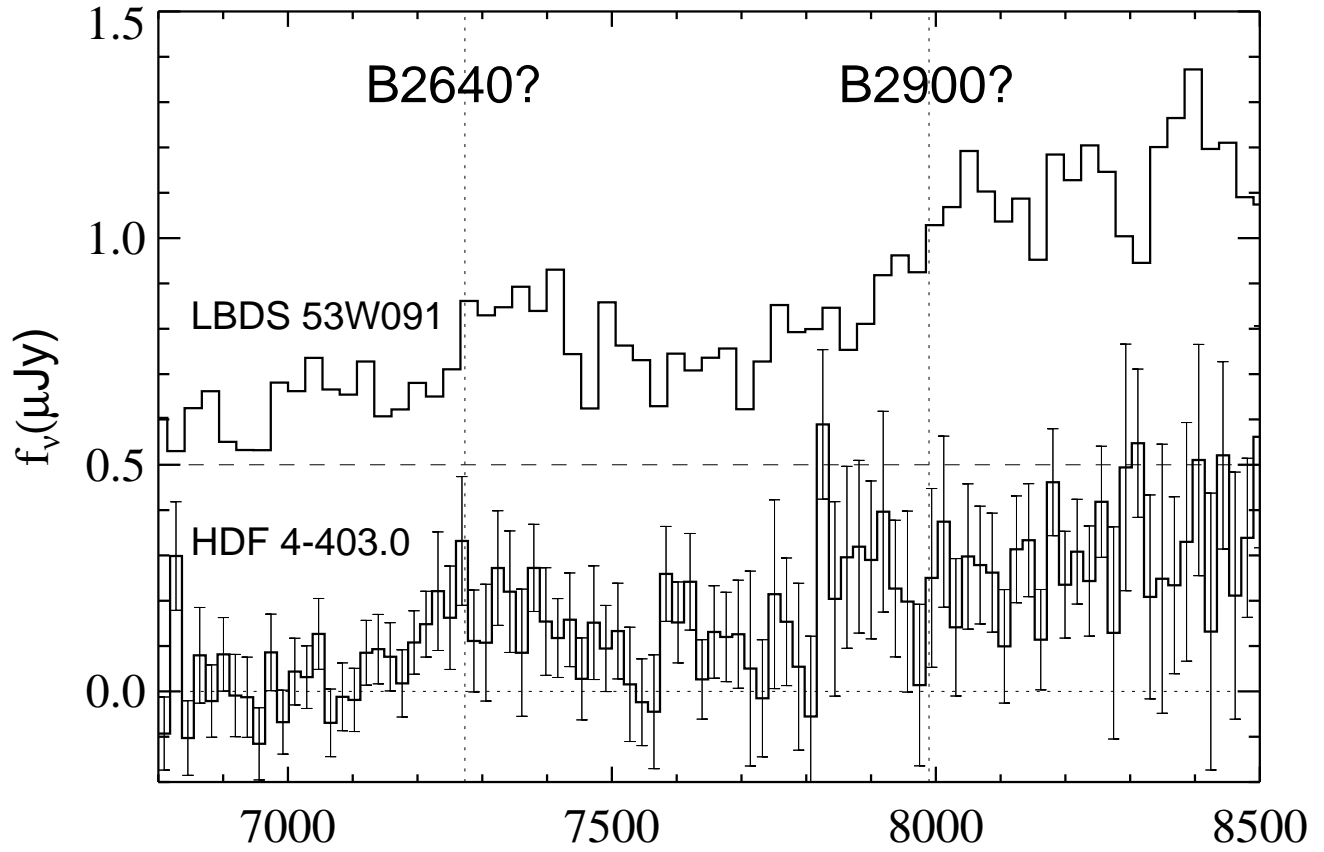


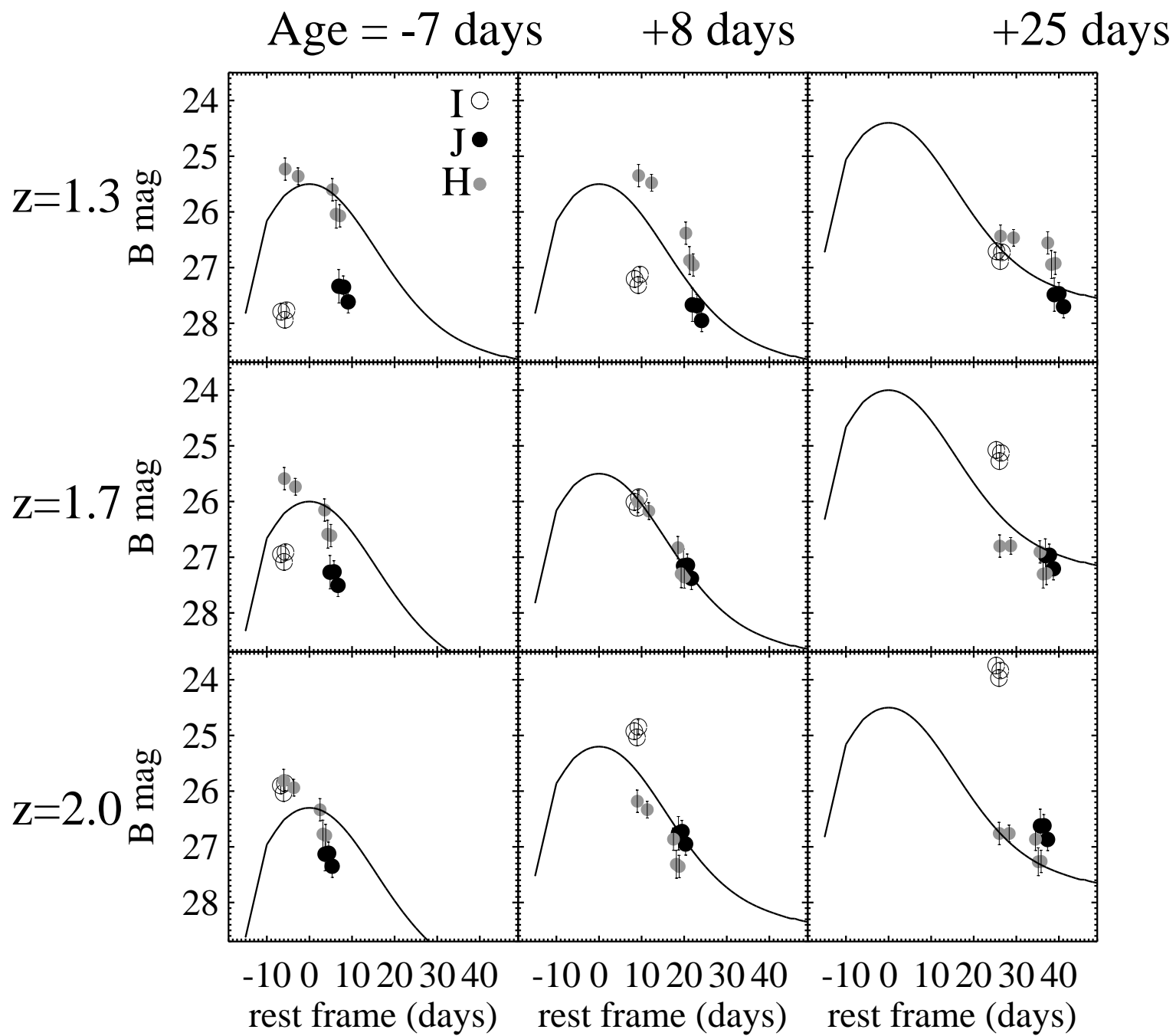
12 pairs of images

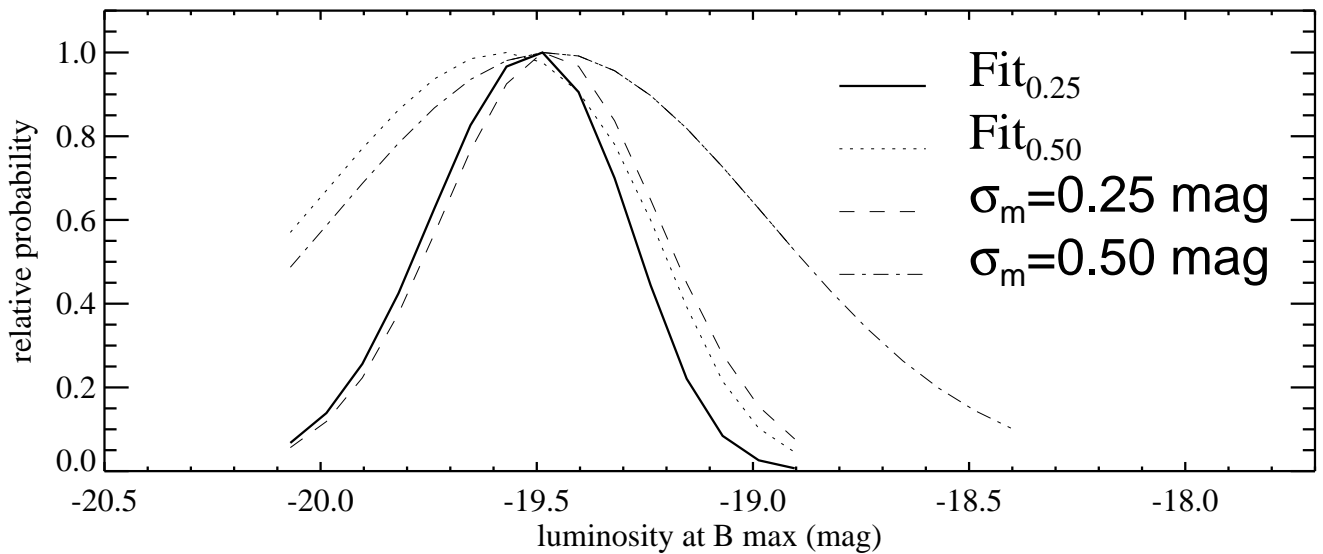
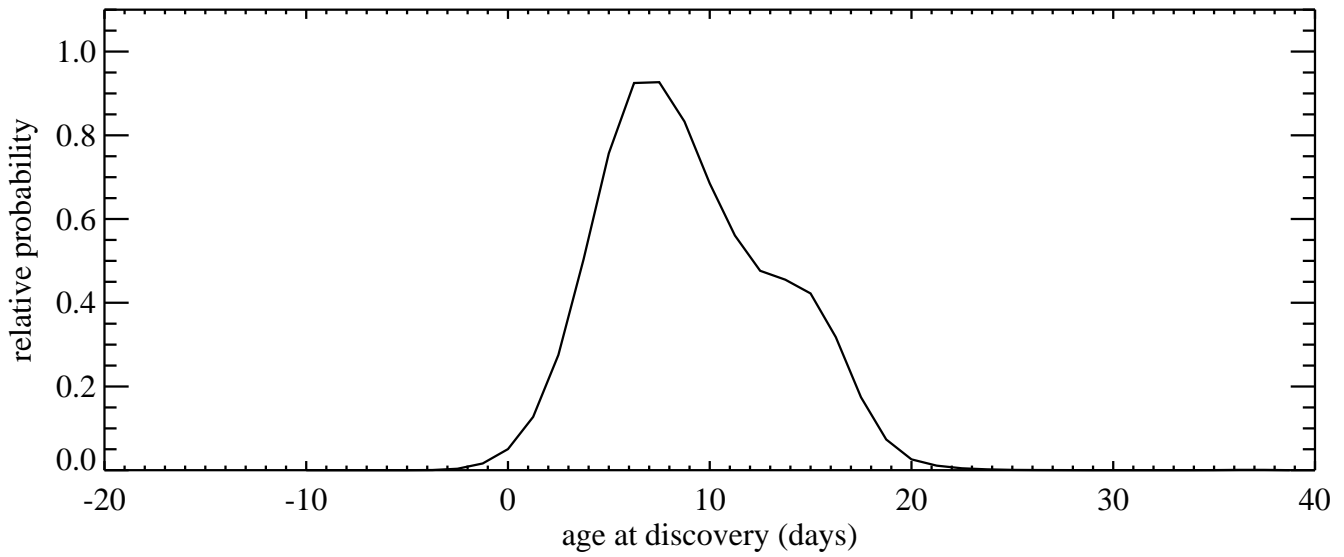
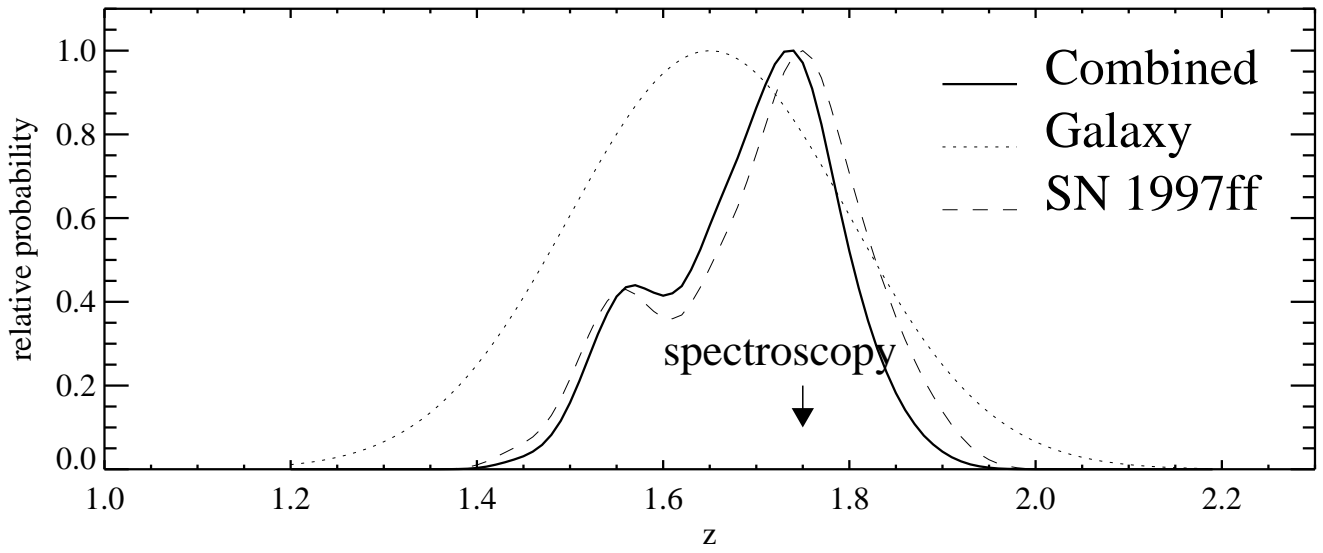


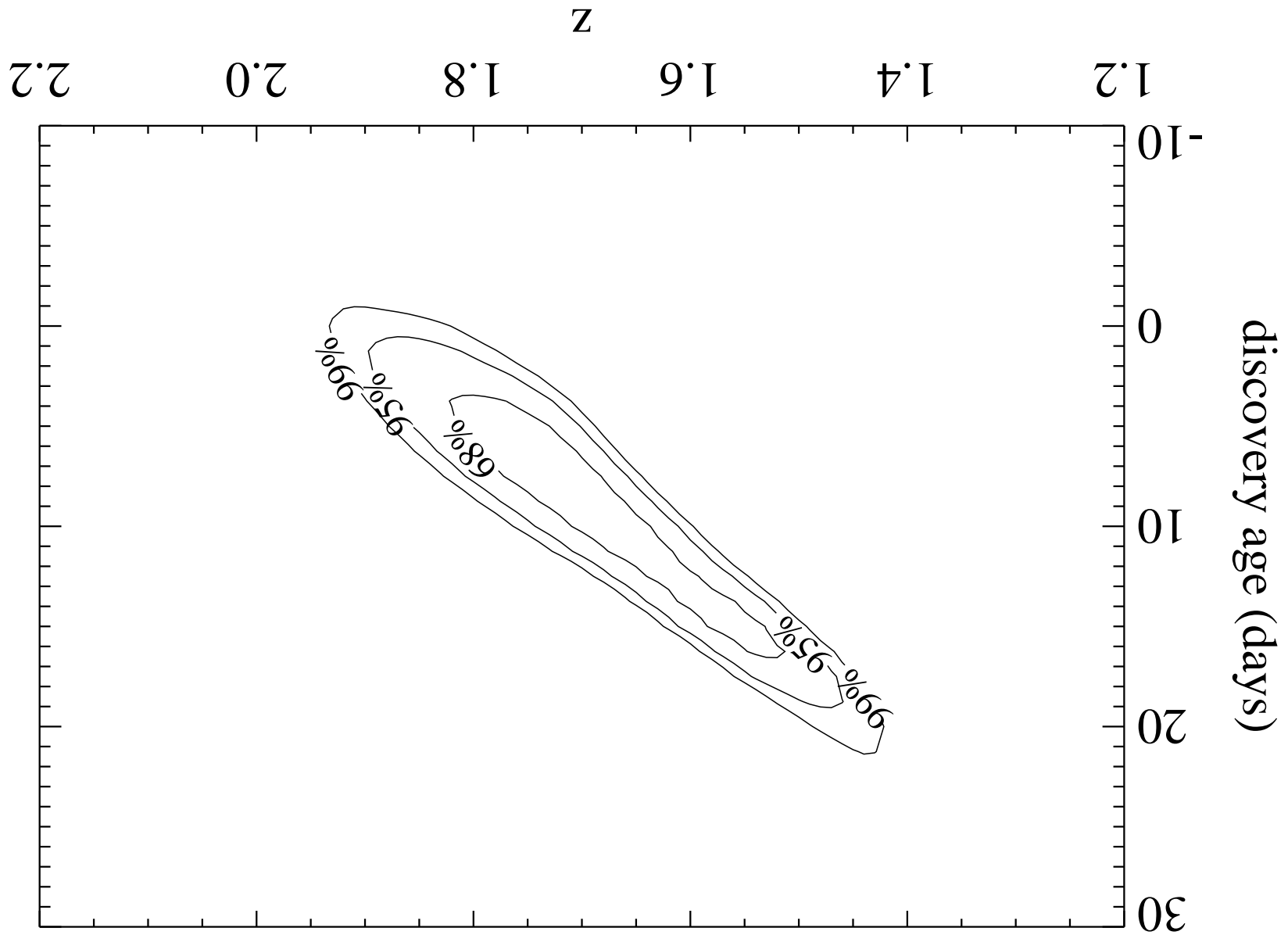




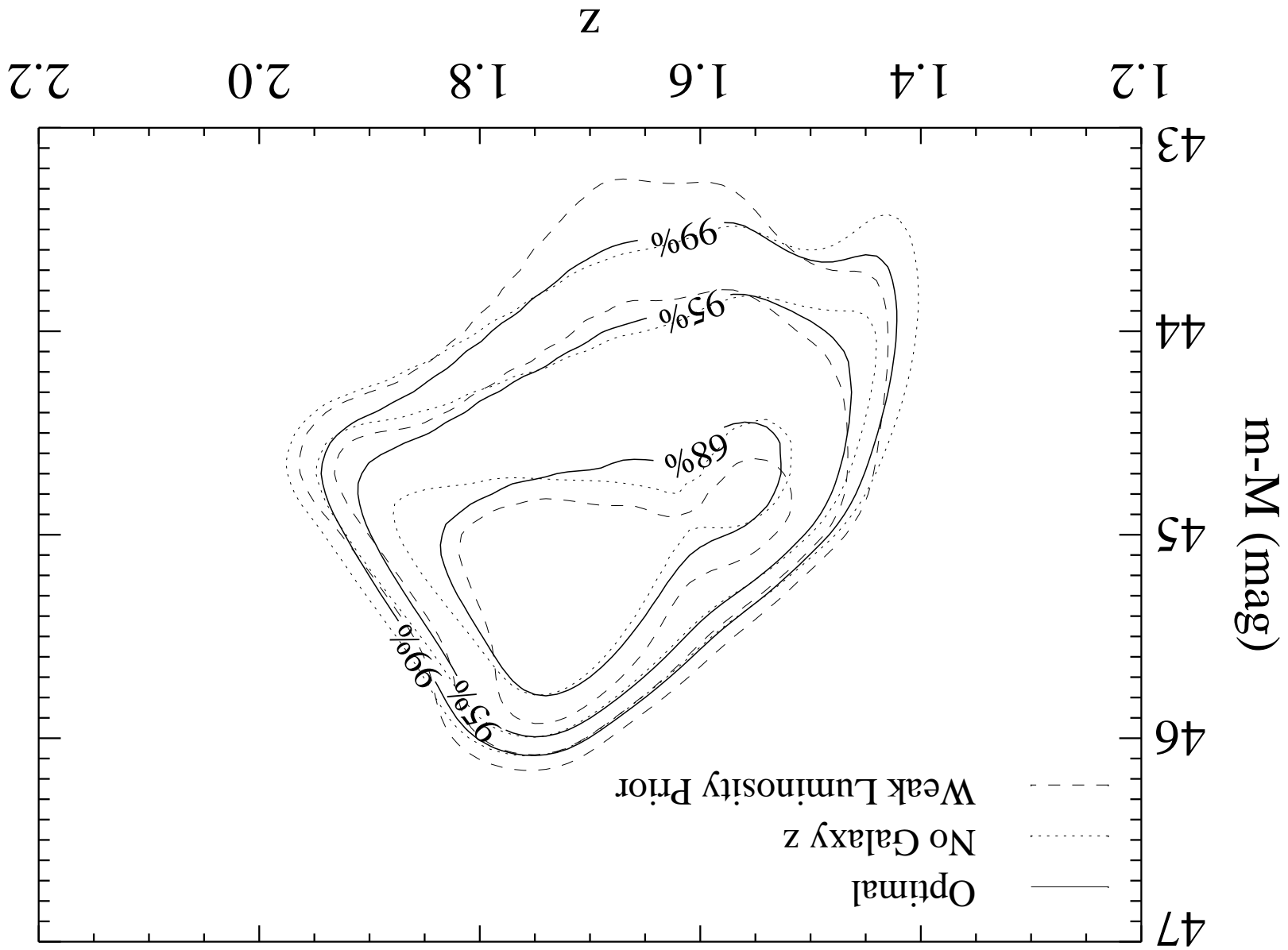


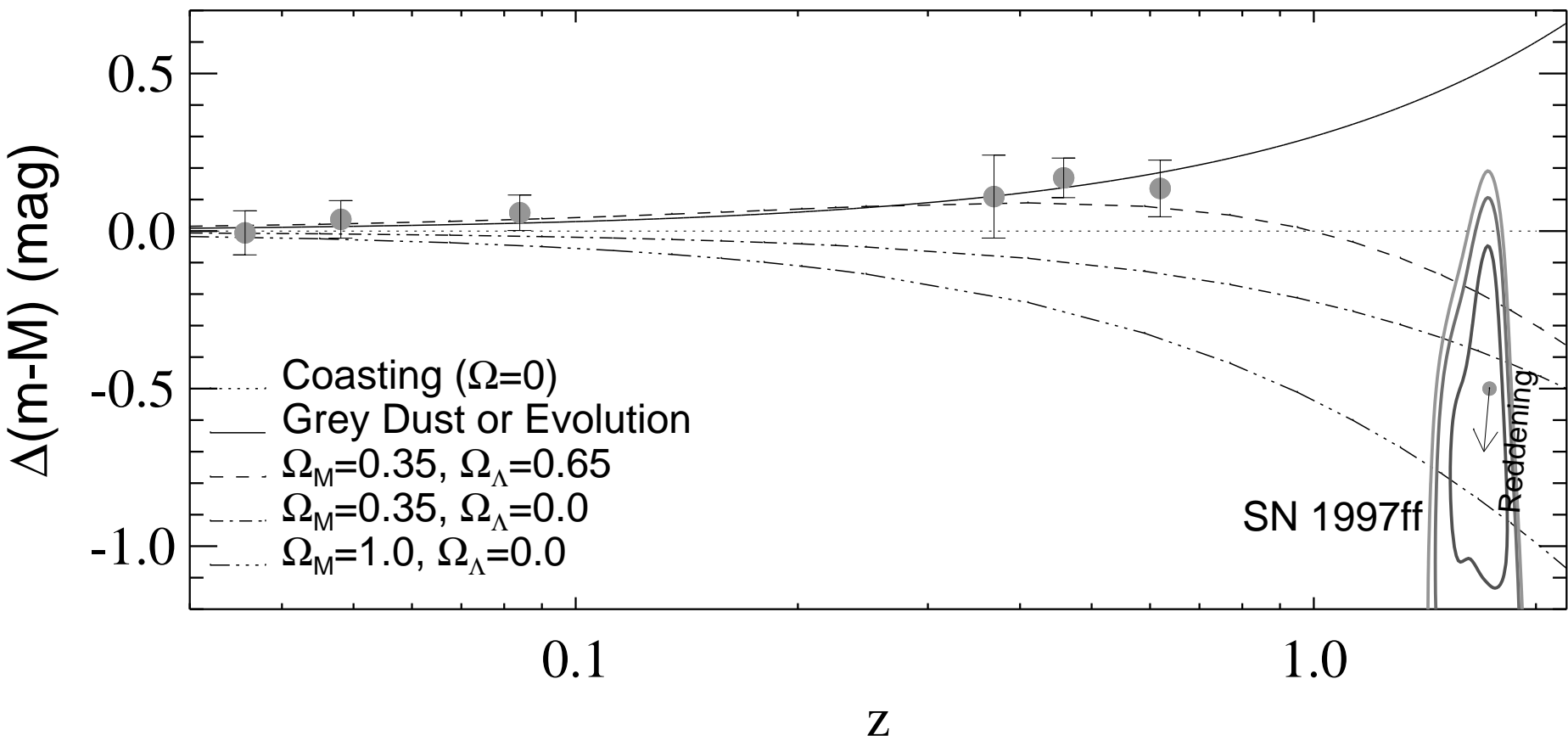


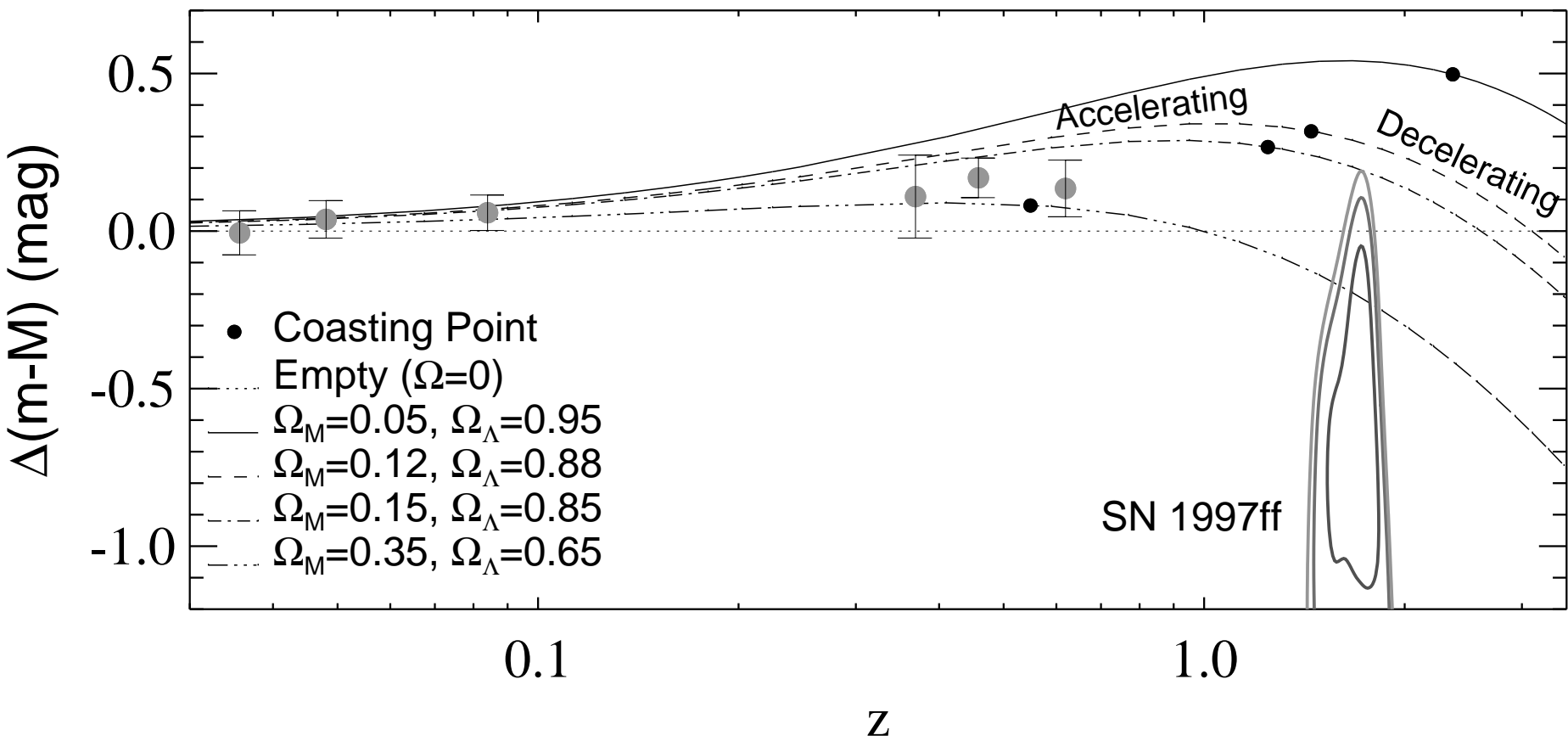


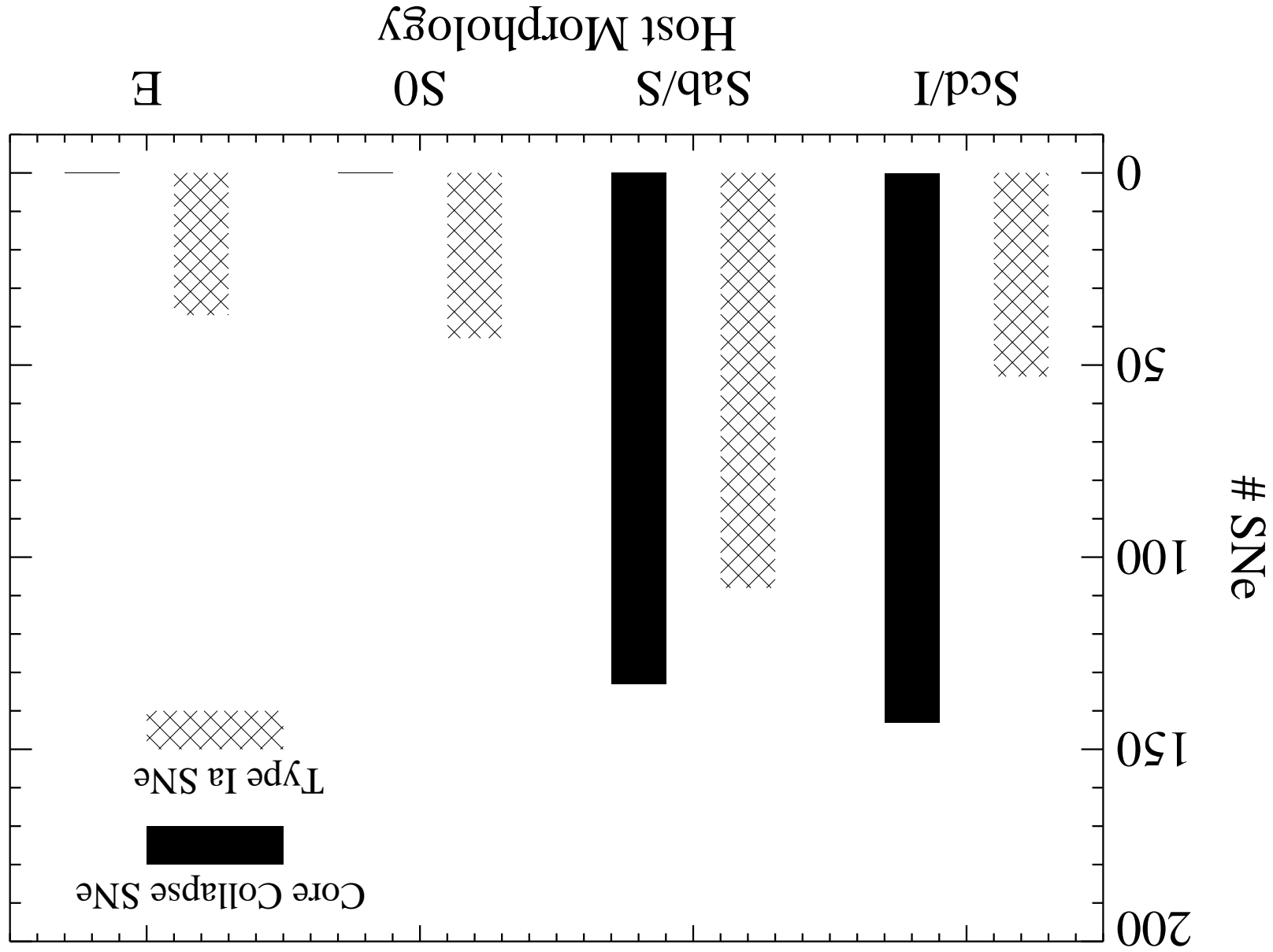












AB mag

