

UCLA

UCLA Previously Published Works

Title

Barriers and facilitators to the uptake of Test and Treat in Mozambique: A qualitative study on patient and provider perceptions

Permalink

<https://escholarship.org/uc/item/13d7j4pg>

Journal

PLOS ONE, 13(12)

ISSN

1932-6203

Authors

Nhassengo, Pedroso

Cataldo, Fabian

Magaço, Amilcar

et al.

Publication Date

2018

DOI

10.1371/journal.pone.0205919

Peer reviewed

RESEARCH ARTICLE

Barriers and facilitators to the uptake of Test and Treat in Mozambique: A qualitative study on patient and provider perceptions

Pedroso Nhassengo^{1*}, Fabian Cataldo², Amilcar Magaço¹, Risa M. Hoffman³, Lucas Nerua¹, Mohomede Saide¹, Rosa Cuco⁴, Roxanne Hoek⁴, Francisco Mbofana⁵, Aleny Couto⁴, Eduardo Gudo¹, Sergio Chicumbe¹, Kathryn Dovel^{3,6}

1 Health System Research Sector, National Institute of Health, Maputo, Mozambique, **2** Institute for Global Health and Development, Queen Margaret University, Edinburgh, United Kingdom, **3** David Geffen School of Medicine, University of California Los Angeles, Los Angeles, California, United States of America, **4** National STI-HIV/AIDS Program, Ministry of Health, Maputo, Mozambique, **5** National Council against HIV/AIDS, Maputo, Mozambique, **6** Research Department, Partners in Hope, Lilongwe, Malawi

* pedrosoepedro@gmail.com



OPEN ACCESS

Citation: Nhassengo P, Cataldo F, Magaço A, Hoffman RM, Nerua L, Saide M, et al. (2018) Barriers and facilitators to the uptake of Test and Treat in Mozambique: A qualitative study on patient and provider perceptions. PLoS ONE 13(12): e0205919. <https://doi.org/10.1371/journal.pone.0205919>

Editor: Jonathan Garcia, Oregon State University, UNITED STATES

Received: May 8, 2018

Accepted: October 2, 2018

Published: December 26, 2018

Copyright: © 2018 Nhassengo et al. This is an open access article distributed under the terms of the [Creative Commons Attribution License](https://creativecommons.org/licenses/by/4.0/), which permits unrestricted use, distribution, and reproduction in any medium, provided the original author and source are credited.

Data Availability Statement: Due to the qualitative nature of this study, the presence of sensitive information, and the potential to identify some participants based on their responses in the interviews, data are not publicly available. De-identified data may be available upon request for researchers who meet the criteria for access to confidential data (received a letter of human subjects research exemption from an institutional review board and have completed the research ethics trainings required by their institution). All

Abstract

Background

In mid-2016, Mozambique began phased implementation of the ‘Test-and-Treat’ policy, which enrolls HIV positive clients into antiretroviral treatment (ART) immediately regardless of CD4 cell count or disease stage. Novel insights into barriers and facilitators to ART initiation among healthy clients are needed to improve implementation of Test and Treat.

Methods and findings

A cross-sectional qualitative study was conducted across 10 health facilities in Mozambique. In-depth interviews (IDIs) were conducted with HIV-positive clients (60 who initiated/20 who did not initiate ART within Test and Treat) and 9 focus group discussion (FGDs) were conducted with health care workers (HCWs; n = 53). Data were analyzed using deductive and inductive analysis strategies. Barriers to ART initiation included: (1) feeling ‘healthy’; (2) not prepared to start ART for life; (3) concerns about ART side effects; (4) fear of HIV disclosure and discrimination; (5) poor interactions with HCWs; (6) limited privacy at health facilities; and (7) perceptions of long wait times. Facilitators included the motivation to stay healthy and to take care of dependents, as well as new models of ART services such as adaptation of counseling to clients’ specific needs, efficient patient flow, and integrated HIV/primary care services.

Conclusions

ART initiation may be difficult for healthy clients in the context of Test-and-Treat. Specific strategies to engage this population are needed. Strategies could include targeted support for clients, community sensitization on the benefits of early ART initiation, client-centered

requests should be sent to the overarching implementation science manager for Partners in Hope, Khumbo Phiri, at khumbophiri@gmail.com. Requests will be considered on a case-by-case basis.

Funding: This study is funded by the U.S. Agency for International Development (<https://www.usaid.gov/>) and the U.S. President's Emergency Plan for AIDS Relief (<https://www.pepfar.gov/>) under Cooperative Agreement AID-OAA-A-15-00070. KD's time was partially funded by the National Institute of Mental Health (<https://www.nimh.nih.gov/>) through T32MH080634-10. KD and RH receive support from the UCLA Center for AIDS Research/AIDS Institute (<http://aidsinstitute.ucla.edu/cfar>) grant AI028697. The funders had no role in study design, data collection and analysis, decision to publish, or preparation of the manuscript.

Competing interests: The authors have declared that no competing interests exist.

approaches to patient care, and improved efficiency through multi-month scripting and increased workforce.

Introduction

In 2015, the World Health Organization (WHO) announced new universal treatment guidelines for antiretroviral treatment (ART), which support initiation of ART for all individuals living with HIV, independent of their immunologic or clinical status.[1] Since then, countries throughout sub-Saharan Africa have adopted the “Universal Test-and-Treat” (Test and Treat) strategy.[2] The strategy is expected to contribute to improved client outcomes and attaining UNAIDS 90-90-90 treatment targets, specifically the ART coverage target.[3] Despite rapid advances in the implementation of Test and Treat, to date, there are limited data on barriers and facilitators to ART initiation under the new policy, particularly among non-pregnant and non-breastfeeding populations who are, for the first time, eligible for ART initiation when asymptomatic at the time of HIV diagnosis (i.e., healthy clients). Limited research has been conducted in Mozambique to understand barriers and facilitators to ART initiation.[4–11]

Previous research in sub-Saharan Africa identified multiple barriers to ART initiation for adults eligible for treatment based on clinical criteria, such as CD4 count or WHO stage.[12–15] Dominant barriers include: concerns related to stigma, confidentiality, and privacy whilst accessing HIV services; negative treatment by clinical staff; conflicting demands on clients' time; distance to the health facility; poor knowledge of ART regimens; and fear of side effects.[15–20] Another body of literature on Option B+, whereby universal treatment is available for all pregnant and breastfeeding women regardless of CD4 count, may provide insight on the experiences of healthy populations. Pregnant and/or breastfeeding women eligible for treatment under Option B+ report the following barriers to ART initiation: not prepared to start lifelong treatment; fearing partner response to a positive status; fear of disclosure; and fear of side effects.[21–23] While these findings provide insight to healthy populations, they may not apply to healthy, non-pregnant clients. Non-pregnant/breastfeeding HIV positive clients who feel healthy may not perceive or understand the need to start ART immediately; they also may not have the additional motivation of preventing mother-to-child-transmission experienced by pregnant/breastfeeding women.

We performed a qualitative study to assess barriers and facilitators to ART initiation among healthy clients eligible for ART under the new Test and Treat policy in Mozambique. The study includes perspectives from both providers and clients. This is one of the first studies in sub-Saharan Africa to explore barriers to ART uptake among asymptomatic non-pregnant/breastfeeding populations in the context of Test and Treat.

Methods

Setting

In Mozambique, a country of 27 million people, an estimated 13.2% of adults (aged 15 to 49 years) are living with HIV.[24] To date, approximately 56% of clients eligible for ART have initiated treatment.[25] In August 2016 Mozambique began a phased implementation of Test and Treat, known locally as *Testar e Iniciar* (“Test and Start”), which intends to enroll all HIV positive clients into care and start ART within fifteen days of a positive HIV diagnosis. Mozambique has taken a human rights approach to linkage to care. While linkage is actively facilitated, clients who test HIV positive and are not ready to initiate ART can remain

anonymous, allowing positive clients to 'opt-in' by presenting themselves for ART rather than being actively traced. Clients may enroll into ART program to receive support for their HIV positive status, such as counseling and support groups, and decline treatment initiation.

Study sites

Study participants were recruited from 10 health facilities located in urban and peri-urban areas across 4 provinces in the Northern, Central, and Southern regions of the country. Sites were eligible if they had a medium to large ART cohort size (defined as > 2000 patients currently on ART) and an active electronic patients tracking system (EPTS) in place 12 months before the Test and Treat policy. All included sites began the Test and Treat rollout in August 2016. Provincial, central and private hospitals were excluded because of their non-representative characteristics of the primary level of care and HIV services (in relation to staffing, service provision and levels of technical expertise). Since multiple sites from the same province met inclusion criteria, we randomly selected a geographical region within each province (see Fig 1). Eligible sites from the same geographical region were grouped together and numbered. Through consecutive randomization processes, 12 potential sites were identified. Two sites were excluded due to concerns around accessibility and low number of new enrollees during the study period.

Study participants and data collection

Focus group discussions (FGDs) ($n = 9$) were conducted with health care workers (HCWs) at study sites. A total of 53 HCWs participated. Four of the 9 FGDs were conducted with health care providers who directly provided ART care (doctors, clinical officers, nurses, maternal and child health nurses, laboratory, and pharmacy staff). The other 5 FGDs were conducted with supporting staff who were engaged in HIV care services (HIV counselors, community health workers called "*Agente Polivalente Elementary*", and trained peer educators). HCWs were eligible for the study if they had been actively engaged in HIV/ART services for at least one year. Discussions focused on HCW observations and perceptions of barriers and facilitators to ART initiation under Test and Treat. We specifically asked if HCWs believed there barriers and facilitators differed for healthy clients under the new policy as compared to clients eligible for ART under older eligibility criteria that relied on CD4 count and/or clinical stage.

In-depth interviews (IDIs) were conducted with 80 people (43 females and 37 males). Eligibility criteria included: (1) non-pregnant/breastfeeding; (2) adult (15 years of age and older); (3) newly diagnosed HIV-positive between August 2016 –February 2017, after the implementation of Test and Treat; and (4) asymptomatic at the time of diagnosis (i.e., not requiring ART initiation due to acute illness or opportunistic infection). We enrolled two groups of individuals who received an HIV positive test under Test and Treat and categorized them based on whether they initiated ART within 14 days of diagnosis (based on government guidelines recommending initiation within a 14 day window): (1) those who initiated ART within 14 days after receiving an HIV positive diagnosis ($n = 60$) ('initiates') and (2) those who were enrolled into care but did not initiate ART within 15 days ($n = 20$) ('non-initiates'). New ART initiates were recruited after ART uptake and counseling sessions. Non-initiates were recruited from HIV service clinics that provide support for people living with HIV or from referrals through community health workers. All clients were screened through the standard study screening procedure (see Fig 2). The interview guide was informed by existing literature [10, 11, 15, 18, 19] and the socioecological model that provides a platform to examine the multiple and dynamic levels within individuals, communities, and society that influence ART initiation [26]. The interview guide included four domains: sociodemographic data; experience with

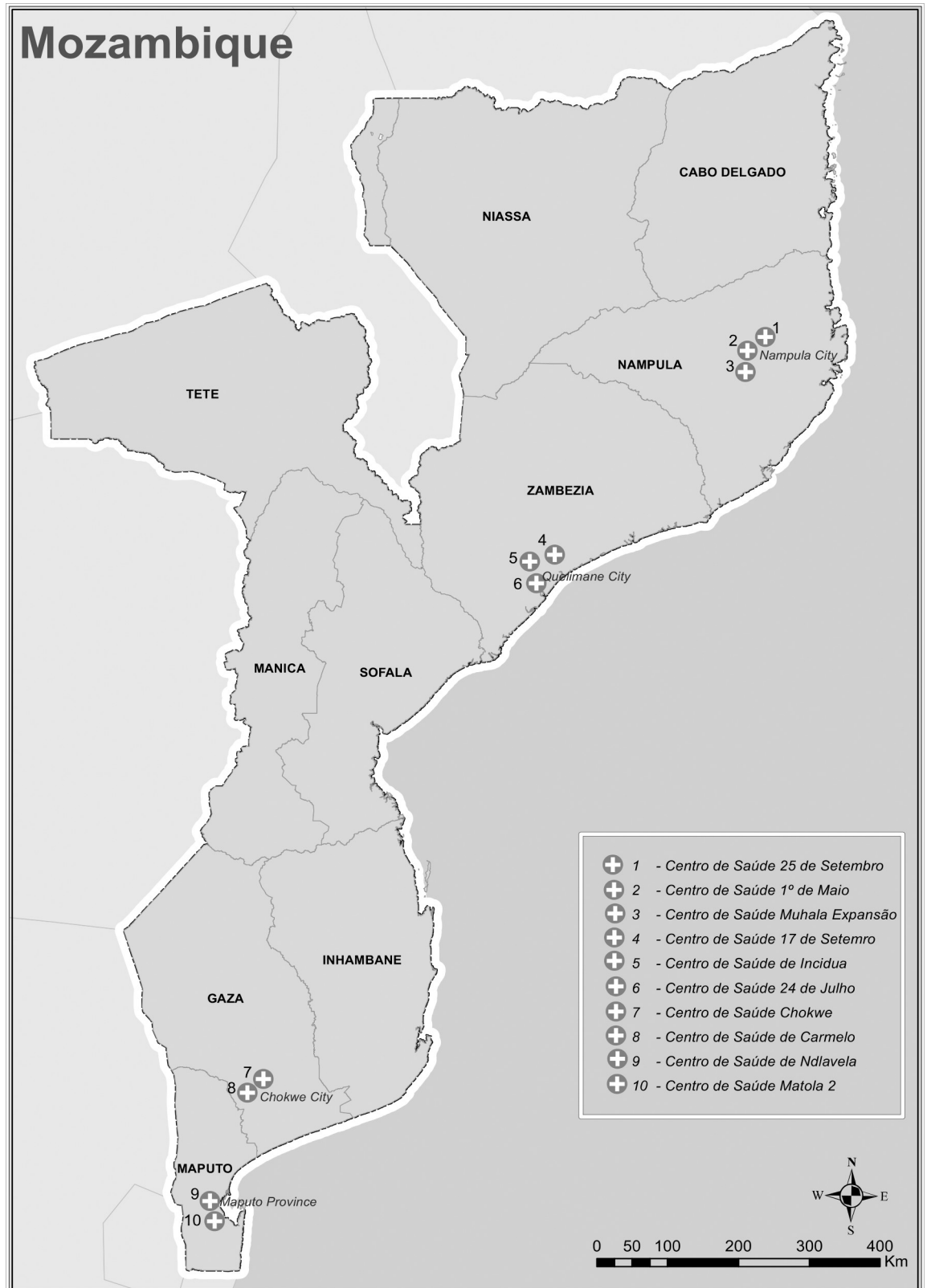


Fig 1. Map of study sites.

<https://doi.org/10.1371/journal.pone.0205919.g001>

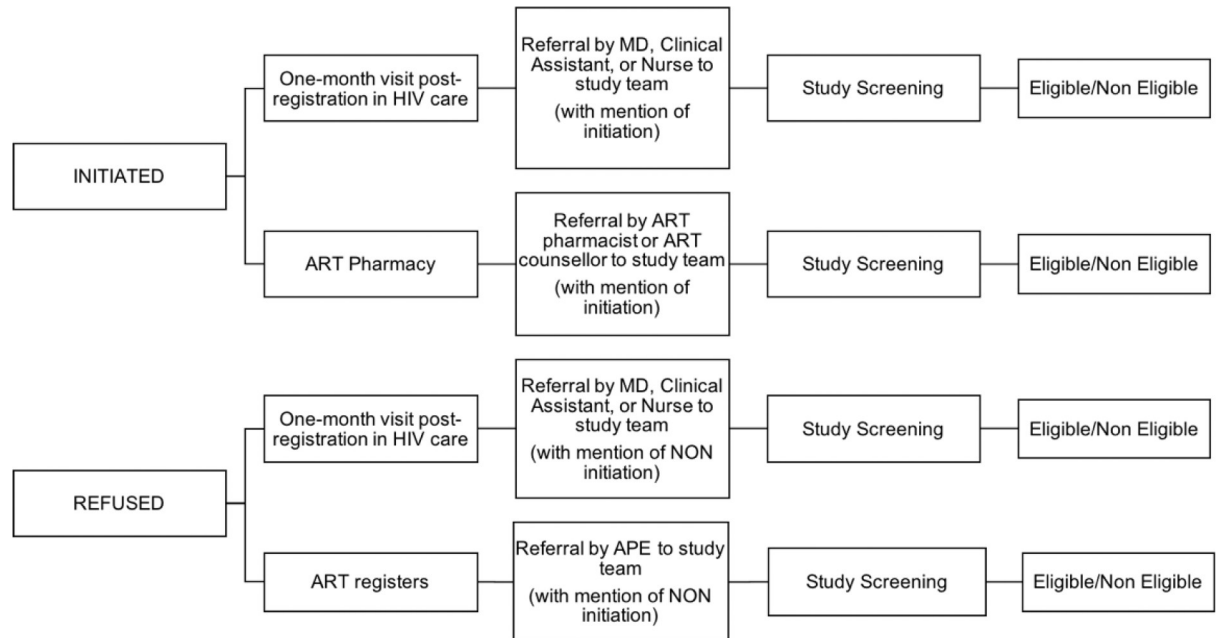


Fig 2. Study recruitment process and screening.

<https://doi.org/10.1371/journal.pone.0205919.g002>

HIV diagnosis and HIV services at their local health facility; perceptions of ART; and perceived barriers and facilitators to their initiation of ART, drawing specifically on barriers and facilitators at multiple levels of the socioecological model.

All data were collected by trained, local research assistants who were experienced in qualitative research in the field of HIV and health services. Data collection tools were developed based on the outcomes of similar studies carried out in the region and open-ended questions were predominant. Probing technique was applied for following up and clarification as needed. In-depth interviews lasted approximately 40 minutes while focus group discussions lasted approximately 80 minutes.

Analysis

All FGDs and IDIs were recorded and transcribed verbatim in Portuguese and translated into English. Analytical themes and codes were derived from the study objectives around facilitators and barriers of ART uptake and retention in care.[27] Transcripts were analyzed using NVivo11 software to extract and sort interview text into single-file statements with the same code from all interviews.[28] Deductive and inductive coding was conducted independently by PN, LN, MS, FC, and AM.[29] Codes were compared for consistency and all discrepancies resolved across the five investigators.

Ethical considerations

This study was approved by the Institutional Ethics Committee of the Instituto Nacional de Saúde (National Institute of Health) in Maputo, Mozambique (ref. no. 025/CIBS-INS/2017) and the Institutional Review Board at the University of California, Los Angeles, USA (approval no. 17–001182). Based on Mozambique law, no parent/guardian consent was needed for participants. This was approved by local ethics review committees. Further, while our eligibility criteria was 15 years of age or older, we did not enroll anyone below 18 years (based on who

presented as a new HIV positive client during the study period). The study was performed in accordance with the study protocol, the Declaration of Helsinki (October 2013) and the WHO Handbook for Good Clinical Research Practice (July 2002). Participants were not paid for their participation in the study. All study participants completed a written informed consent prior to enrollment in the study. Thumb prints were taken for respondents who were unable to write.

Results

Socio demographic data

Sociodemographic data of HIV-infected participants in IDIs are described in Table 1. Respondents included 43 females and 37 males. Median age was 37 (IQR, 28–43). Thirty-seven

Table 1. Socio-demographic data—individuals living with HIV.

	Initiates (n = 60)	Non-initiates (n = 20)	Total (N = 80)
Median age (IQR)	37	38	37 (28–43)
Male	24 (40%)	13 (65%)	37 (46%)
Female	36 (60%)	7 (35%)	43 (54%)
Mean n. of children (Range)	2 (0–2)	1 (0–1)	1 (0–2)
Education level completed			
Primary	27 (45%)	7 (35%)	34 (42.5%)
Secondary/Higher	22 (37%)	11 (55%)	33 (41%)
No education	11 (13%)	2 (10%)	13 (16%)
Occupation			
Formal/Informal work	52 (87%)	15 (75%)	67 (84%)
No work/Student	8 (13%)	5 (25%)	13 (16%)
Time knowing HIV+ serostatus			
1–3 Months	32	9	41
3–6 Months	28	11	39
Average travel time to clinic			
< 30 Min	30	11	41
30 Min–2h	25	9	34
> 2h	5	0	5
Self-assessment of health status			
Very good/Excellent	33 (55%)	8 (40%)	41 (51%)
Good	26 (43%)	10 (50%)	36 (45%)
Poor	1 (1%)	2 (10%)	3 (3%)
Disclosed to partner	36 (60%)	10 (50%)	46 (57%)
Know partner status	34 (56%)	10 (50%)	44 (55%)
Partner status			
HIV +	25 (42%)	9 (45%)	34 (42.5%)
HIV -	9 (15%)	1 (5%)	10 (12.5%)
Refuse to disclose	4 (7%)	1 (5%)	5 (6%)
Do not know	22 (36%)	9 (45%)	31 (39%)
Total informants by Province			
Maputo	11	5	16
Gaza	20	3	23
Zambézia	13	3	16
Nampula	16	9	25

<https://doi.org/10.1371/journal.pone.0205919.t001>

Table 2. Socio-demographic data—Health care providers participating in FGDs.

	Maputo (n = 12)	Gaza (n = 14)	Zambézia (n = 8)	Nampula (n = 19)	Total (N = 53)
Median age (IQR)	29 (28–39)	36 (29–39)	36 (26–40)	36 (30–44)	36 (28–40)
Male	3	8	8	14	33 (62%)
Female	9	6	0	5	20 (38%)
Occupation					
Health facility clinical staff (doctor, clinical officer, nurse, pharmacist, lab technician, etc.)	5	8	4	9	26
Supporting staff (counselors, community health workers)	7	6	4	10	27
Median years working in HIV services (IQR)	2 (1–5)	4.5 (4–7)	3 (3–9)	3 (1–6)	4 (2–7)

<https://doi.org/10.1371/journal.pone.0205919.t002>

respondents had known their HIV status for 1–3 months, and 43 for more than 3 months. Education levels varied, with most completing at least primary school. Most interviewees received some income from formal or informal work including subsistence agriculture (83%). Average travel time to health facilities ranged from 30 minutes to 2 hours, with about half of the interviewees (51%) requiring less than 30 minutes to reach a health facility. More than half of the respondents (57%) had disclosed their HIV status to their spouse or partner, and more than half stated that they knew their partner’s serostatus (55%).

Sociodemographic data of providers participating in FGDs are described in Table 2. Respondents included 20 females and 33 males. Median age was 36 years (IQR 28–40) and median years working in HIV services was 4 years (IQR 2–7).

Barriers to initiating ART

Both HCWs and clients identified a range of barriers to ART initiation.

Client acceptance of HIV status and ART. Feeling ‘healthy’ was described by health providers (8/9 FGDs) and some of the clients (7/80) as one of the main reasons for not believing a positive test result. One female client who refused to start ART described her “disbelief” at receiving a positive HIV diagnosis despite feeling well: “*I didn’t believe it [HIV test result], I’m fine, I don’t feel anything*” (Female client, Non-initiate, Maputo). Another client stated: “*I thought they [HCWs] were playing with me*” (Male client, Non-initiate, Gaza).

Feeling ‘healthy’ and being asymptomatic was also cited by most providers (9/9 FGDs), and some clients (7/80), as an important barrier to starting ART. One of the HCWs in Nampula explained that “*patients say: I am not yet prepared because I am not yet sick, I am not yet sick, I cannot accept to start with the treatment today*” (female HCW, support staff, Nampula). Another HCW described:

“A person, as long as he has no symptoms, having been tested and diagnosed, to say he has to start ART does not seem to be a reality; the person wants to believe that he is ill when he is in bed, while he is still healthy does not feel like he is really sick” (male HCW, support staff, Gaza).

Lack of information about ART was cited by both health providers and clients as an important barrier to starting ART. Some clients complained about having to start medication without fully understanding adherence requirements and how long they needed to take treatment. Others explained they were not aware of the new Test and Treat policy and felt confused and unprepared to start treatment immediately after a positive test.

“They [HCWs] were not very explicit, they didn’t explain much. They just started the process and said tomorrow you should come back to pick up these medicines, I didn’t know what medicines they were talking about.” (Male client, Non-initiate, Nampula)

“Every patient resists” added one of the HCWs in Zambézia, who explained that clients may not understand the reason for starting ART and the necessity to be on any treatment. Another HCW described the difficulties in starting ART immediately after the HIV test:

“It is hard for them [clients] to suddenly start the treatment immediately after the results, some who are supposed to benefit from this treatment may not understand [. . .] for some people it is so sudden and immediate” “Some people when they are tested are very skeptical to start on the very same day” (male HCW, support staff, Gaza).

Several clients (26/80) expressed being reluctant to start ART ‘for life’. One of the women in Gaza said: “pills for the rest of life is worrying” (Female client, Initiate, Gaza). One woman in Maputo who refused to start ART described the challenge of embarking on lifelong therapy:

“I will have to take pills forever. . . . Tablets forever, my God I never thought that would happen to me, it’s unbearable to take pills the whole life. [. . .] taking pills for life every day is complicated, very complicated” (Female client, Non-initiate, Maputo).

Perceived side effects. Most clients (59/80) reported that feeling dizzy and unwell could lead them to stop taking ART: “They [ARVs] torture me, I feel bad when I take more” said a woman who had recently initiated ART in Gaza (Female client, Initiate, Gaza). Another woman attests to the personal challenges of starting ART: “on the first day, the reaction is very strong and you can even quit if you are not strong and determined” (Female client, Initiate, Nampula).

Concern about side effects was also cited as a key barrier during all discussions with HCWs, who described their clients’ fear of possible harmful reactions:

“She [patient] was doing the treatment here but had severe reactions to the drugs and her family didn’t understand what was going on and they thought that it was witchcraft” (male HCW, support staff, Zambézia).

Some health providers also pointed at widespread negative beliefs around HIV and ART, whereas clients described ART as a poison purposefully dispensed by HCWs. One provider described an interaction with a client who was trying to decide to whether to take treatment or not:

“[the patient said]: ‘My mother said don’t take it [ART]. Let’s do the family treatment [home-made herbal medication] because it [ART] will kill you, those people [HCWs] want to kill you” (female HCW, clinical staff, Nampula).

Disclosure and partner involvement. Health providers and clients described the challenge of disclosure for individuals who recently tested HIV positive: “I do not trust other people”, said one female client who initiated treatment in Gaza. Fear of discrimination, being stigmatized, and lack of trust towards sexual partners and health providers were cited by the majority of clients (59/80) as the main reason for not disclosing their serostatus to other individuals, including family members, friends, neighbors and the larger community; “When you tell them [other individuals], they start to discriminate and stigmatize you, saying you are taking antiretrovirals” (Female client, Initiate, Gaza).

One of the HCWs described their clients’ fear of disclosing in relation to the pervasive stigma around HIV transmission:

“[. . .] what comes to their [clients’] mind is that being HIV positive is equal to having had promiscuous conduct, bad conduct that the society doesn’t approve of” (male HCW, support staff, Gaza).

HCWs (7/9 FGDs) indicated that some of the women who refused to start ART needed to seek consent from their partner in order to start treatment. The low level of disclosure within couples limited partner involvement. Several women feared that disclosing their serostatus or openly discussing ART initiation with their partner would negatively impact their relationship and result in rejection from their partner.

“Wives do not reveal [their HIV status] because they fear that the partner can beat them or even get divorced because nowadays when the men know about it, they abandon the family” (female, support staff, Zambézia).

One of the women who initiated ART in Gaza described the changes in her relationship after sharing that she is living with HIV: “I realized that nothing was worthwhile looking at the way he [partner] started talking to me. [. . .] He stopped treating me like a lady and things got worse day in and day out” (Female client, Initiate, Gaza).

In Maputo, one of the women interviewed who refused to start ART narrated some of her challenges in sharing her serostatus with her partner:

“I left [the facility] with the determination that I will tell him [partner] that [I am HIV positive] but when I arrived I didn’t have the courage [. . .] He will put the blame on me. [. . .] I really want to [start ART] but I cannot start the treatment without my partner I live with. Imagine if I start the treatment I have to take pills where am I going to hide the pills? In our house, there is no place to hide. [. . .] I don’t want to start treatment alone [. . .] it’s as if I were betraying him. [. . .] The biggest cause for me not to start treatment is my partner, he doesn’t know [that I am living with HIV]; I don’t know how to tell him. (Female client, non-initiate, Maputo)

Interactions with providers and privacy at health facilities. Some HIV-infected clients (30/80) described negative interactions with HCWs. Clients attributed self-transfers to other health facilities or the desire to stop ART to the perceived negative attitudes of HCWs. Some of the clients (15/60) who had recently initiated ART perceived mistreatment by HCWs as having a negative impact on every aspect of their clinical visits:

“They [doctors and nurses] treat us as if we are mad people. And most of the time people who are infected tend to lose their hope in taking their life forward” (Female client, Initiate, Maputo).

Due to limited privacy at health facilities, clients who felt healthy tended to avoid ART clinics because they were concerned about being seen by relatives, friends, or neighbors. HCWs (9/9 FGDs) reported that lack of privacy at health facilities hinders ART uptake and retention in care. Some clients (27/80) also raised privacy as a barrier, some traveling long distances to seek HIV care where minimum privacy could be ensured; HCWs indicated that clients who travel long distances for HIV care are more likely to default due to limited transport money and other expenses related to accessing care. One of the women in Gaza mentioned that “there is no privacy, even when they [HCWs] give a prescription, because of the call [in public], people know that so-and-so comes to get pills [ART]” (Female client, Initiate, Gaza). Some initial HIV

counseling sessions for newly diagnosed individuals are set up as ‘group counseling’, and clients reported this as an additional deterrent due to lack of privacy and confidentiality.

Long wait times. The perception of the time required for HIV services negatively impacted clients’ ability to initiate and continue ART, particularly for clients who fear disclosure or fear to lose their job for absenteeism. One male client who refused to initiate said: “*This [wait time] makes it a bit difficult because I live based on small business, if I’m here for 30 minutes, this is wasting my time*” (Male client, Non-initiate, Gaza).

One of the HCWs raised that it may seem impossible for some clients to take time off to attend monthly clinic visits:

“The person [client] says [. . .] I cannot come to the hospital because my boss will not let me if I tell him that I’m going to the hospital every month, I’m going to lose my job” (female HCW, clinical staff, FGD).

HCWs (6/9 FGDs) also mentioned that the implementation of Test and Treat is causing a rapid increase in the number of people coming to health facilities seeking ART services. Health facilities are at or over capacity to deal appropriately with HIV positive clients, causing additional delays for clients needing to navigate through several cares and counseling services on the same day.

Facilitators to initiating ART

Several facilitators were mentioned by HCWs and clients, although facilitators were mentioned less frequently than barriers.

Staying healthy. HCWs (8/9 FGDs) noted that women were motivated to stay healthy in order to guarantee their children’s well-being. Most female clients (36/43) perceived ART as a major positive determinant of their own well-being and short- as well as long-term survival. Men also emphasized that starting ART early is a determinant of long-term survival (28/37), helping them to be healthy and prevent opportunistic infections. A few men mentioned the need to continue feeling healthy in order to work and make a living:

“I like what I do, so I didn’t want to have to give up because I’m sick, so the concern was to start the treatment being healthy and to continue my work” (Male client, Initiate, Maputo).

Health service models. Health providers (9/9 FGDs) believe that new strategies for HIV service delivery can improve ART uptake. Several new approaches to service delivery were suggested by HCWs, such as the adaptation of counseling sessions to clients’ specific needs (e.g. providing counselors with talking points that can be tailored to a client’s specific situation); locally-designed strategies to manage client flow and reduce waiting time in light of increased demand under Test and Treat, such as additional dedicated time for ART services and increased workforce; gender-specific consultations for mothers, children, and men; and ‘one-stop’ services with integrated HIV/primary care. Integrated services (HIV and primary care services) were perceived as particularly important because the strategy could decrease wait time and improve client privacy. In addition, HCWs believed community health-information programs were valuable resources to increase knowledge of ART, promoting timely treatment acceptance by clients.

Providers also noted that being professional, expressing empathy, having a caring attitude and investing time in counseling clients, were key strategies to facilitate the initiation of ART. Some clients (32/80) expressed feeling encouraged to continue accessing HIV services due to the supportive attitude of some HCWs:

“Whenever I come here I don’t find the same doctor or the same nurse, but they always receive me well. Even when I go to get tablets, they ask me [about] sadness, they tell me not to feel bad. They always talk to us. They care about a sick person and everyone. They do the job well” (Female client, Initiate, Matola).

Discussion

This study is one of the first to examine barriers and facilitators for ART initiation in the context of universal Test and Treat among asymptomatic non-pregnant/breastfeeding adults. We find that already established barriers to care remain a problem for newly diagnosed clients under the Test and Treat policy; traditional barriers continue to limit ART initiation, alongside new barriers for healthy clients where good health makes it difficult for clients to accept a positive status or treatment initiation. Dominant barriers identified by both clients and providers in this study include: (1) feeling healthy; (2) non-acceptance of a positive HIV status; (3) poor knowledge about ART; (4) fear of ART side effects; and (5) fear of disclosure and lack of partner involvement due to stigma and discrimination. Less dominant, but still important, barriers identified include reluctance to start ART for life and needing time to accept positive test results before initiating treatment.[17, 19, 30–35] Provider perspectives closely mirrored accounts from client participants. Similar to our findings, several studies have reported that the idea of feeling ‘healthy’ was linked to refusing to initiate ART. [18, 34, 36, 37]

Negative attitudes among some HCWs, combined with the lack of privacy at clinics, distance to access services, and time needed to access HIV care were cited as key barriers to starting ART among clients in our study. Lack of privacy in HIV and ART services has been associated with individuals avoiding health facilities for fear of inadvertent disclosure to others.[17, 31, 33] Poor treatment of HIV-infected clients has been noted in other studies, particularly among pregnant women.[15] It is notable that in our study, there was a mixed experience with some clients reporting poor treatment at clinics and others specifically raising kindness and support from HCWs as a facilitator to ART initiation, including variation within a single clinic. It is likely that chronic shortages in health care workers strain the ability of existing HCWs to provide compassionate, holistic care.

Our findings also point to the rapid increase in HCWs’ workload as an important consideration as more countries start to implement Test and Treat. The implementation of multi-month scripting (3- or 6-month scripts) could address this concern by decreasing the number of clients seen each month.[38, 39] Expanding staffing may also be needed to accommodate the influx of new clients. Studies have shown the negative impact of an increase in HCWs’ workload without corresponding increase in manpower, particularly in a context with limited health system infrastructures.[19, 40, 41]

At the community level, some providers and clients suggested that fear of stigma and discrimination affected clients’ health-seeking behaviors. Several studies have described how anticipated stigma and fear of stigma are associated with non-disclosure and represent important barriers to treatment initiation.[17–20, 30–32, 35, 36, 42–45] In addition, religious beliefs [44] and alternative healing systems or remedies[34, 36] have been reported as barriers to ART initiation. At least one study identified the concern that ART may affect livelihood if side effects limit an individual’s ability to carry out daily work.[34] We found that fear of side effects was a common theme among clients, and individuals who feel healthy have concerns that starting ART will reduce their quality of life and their ability to carry out daily activities, including work. Current first-line ART in Mozambique includes the non-nucleoside reverse transcriptase inhibitor efavirenz (EFV), which is associated with central nervous system (CNS)

side effects;[46] however, these are typically most pronounced early after initiation and often improve over time. Education around possible side effects and availability of other ART regimens may reassure patients and help them remain on treatment and/or seek care if they don't feel well on first-line EFV. Newer regimens using integrase-inhibitors may eventually replace EFV with fewer CNS side effects.[47]

Our study found that a few key facilitators positively influenced clients' willingness to start and remain in treatment. These included better knowledge about the benefits of ART, the desire for good health, and the desire to remain healthy to be able to care for dependents. [35] The desire to appear healthy and avoid the stigma associated with AIDS-related symptoms has been linked to individuals seeking to test and starting ART in other settings.[37, 48] Other studies have highlighted that being able to continue to care for family dependents is central to clients' decisions to start treatment.[4, 35]

Test and Treat marks a paradigm change from previous strategies addressing the HIV epidemic. With the increasing focus on early treatment to optimize long-term health and treatment as prevention, understanding the unique barriers to ART that healthy individuals face is an important step to ensuring the success of Test and Treat in Mozambique and similar contexts. Our data suggest that the following strategies may be helpful optimize treatment uptake and retention in Test and Treat among healthy clients:

- Individual and group counseling should include messages targeted to clients' specific needs. Specific counseling material is needed about the benefits of starting on ART while feeling healthy and remaining on ART for life, as well as specific strategies healthy clients can use to overcome barriers to care. Such information may help clients better understand and accept immediate treatment initiation as part of Test and Treat.
- Community sensitization campaigns are needed to improve client understanding and acceptance of immediate treatment initiation under Test and Treat, even before they reach the health facility. Information on the benefits of treatment for prevention should also be included. Recent data show understanding treatment as a form of prevention may increase use of testing and treatment at the community-level.[49]
- Strategies to improve client privacy and decrease wait times should be pursued. Locally-designed strategies may help manage client flow and reduce wait times in light of increased demand under Test and Treat. 'One-stop' services with integrated HIV/primary care may also decrease concerns around client privacy and wait times.[50] Client-centered HIV services should continue to be pursued as they increase support and improve the over-arching environment in which care is delivered, potentially improving ART uptake and retention among healthy clients. Privacy may also be improved through community-based distribution strategies.
- Multi-month dispensing strategies are needed to accommodate increased demands for ART. Three-month scripting is well established and successful in other settings.[51, 52] Likewise, six-month scripting has been validated in other settings[38, 39] and is currently being evaluated in Malawi and Zambia, similar low-resourced settings as Mozambique.[53]
- Additional investments in staffing may be needed to support the increasing number of clients initiating ART. In particular, there may be a need for additional support staff (counselors and peer-educators) who can provide additional support to healthy clients initiating ART under Test and Treat.

The implementation of Test and Treat in Mozambique marks an important paradigm shift in the enrolment of clients in HIV care, with asymptomatic non-pregnant/breastfeeding adults

now being offered ART. This study provides novel insights into the way previously established barriers and facilitators are exacerbated for healthy clients in the context of universal access to treatment. In order to optimize uptake and retention and achieve the 90/90/90 goals as established by UNAIDS, programs will need to address barriers for this population, including stigma reduction, improved counseling and appropriate education on HIV services, emphasis on compassionate, client-centered care, and improved privacy and confidentiality at ART clinics. The implementation of the Test and Treat guidelines has generated a rapid increase in the number of clients enrolled in HIV care, and in the perceived workload of HCWs. New strategies to improve efficiencies and potentially expand the workforce may help to reduce barriers to care, improve uptake and retention, and optimize long-term outcomes for clients.

Limitations

This study included the perspectives of health providers, as well as men and women who have both accepted and refused ART as part of the national Test and Treat program; however, there are several limitations. First, over half of respondents were diagnosed between 3–6 months prior to completing the in-depth interview. This may create recall bias. However, findings were similar with clients who were diagnosed recently (<3 months), suggesting recall bias is minimal. Second, the cross-sectional nature of the research design means that we are unable to confirm that perceived barriers and facilitators predict ART initiation (or not). Finally, representation of findings may be limited as only 4 of Mozambique's 10 provinces were included in the study, and we excluded provincial and private hospitals, as well as smaller, rural health facilities, where perspectives of HIV-infected clients and HCWs may be different.

Acknowledgments

Disclaimer: This study is funded by the U.S. Agency for International Development (USAID) and the President's Emergency Plan for AIDS Relief (PEPFAR) under Cooperative Agreement AID-OAA-A-15-00070. KD's time was partially funded by the National Institute of Mental Health (NIMH) through T32MH080634-10. KD and RH receive support from the UCLA CFAR grant AI028697 and the UCLA AIDS Institute. The opinions expressed in this article do not necessarily reflect the views or policies of USAID, the EQUIP consortium, or the National Institute of Health, Maputo (INS).

The authors are grateful to the research assistants who contributed to data collection, as well as to study participants for their dedicated contribution to the study. The team would also thank Rachel Thomas for her contribution to launching the study, the Mozambique Ministry of Health and other key stakeholders who contributed to the conception of the study and study implementation, and to USAID for the funding and valuable guidance that was made available to the EQUIP consortium.

Author Contributions

Conceptualization: Risa M. Hoffman, Kathryn Dovel.

Formal analysis: Pedroso Nhassengo, Fabian Cataldo, Amilcar Magaço, Lucas Nerua, Mohamede Saide.

Funding acquisition: Risa M. Hoffman.

Investigation: Pedroso Nhassengo, Fabian Cataldo, Amilcar Magaço, Lucas Nerua, Sergio Chicumbe.

Methodology: Pedroso Nhassengo, Amilcar Magaço, Aleny Couto, Eduardo Gudo, Sergio Chicumbe, Kathryn Dovel.

Project administration: Pedroso Nhassengo, Fabian Cataldo, Amilcar Magaço.

Supervision: Sergio Chicumbe, Kathryn Dovel.

Writing – original draft: Pedroso Nhassengo, Fabian Cataldo, Amilcar Magaço, Lucas Nerua, Mohomede Saide, Sergio Chicumbe, Kathryn Dovel.

Writing – review & editing: Pedroso Nhassengo, Fabian Cataldo, Amilcar Magaço, Risa M. Hoffman, Lucas Nerua, Mohomede Saide, Rosa Cuco, Roxanne Hoek, Francisco Mbofana, Aleny Couto, Eduardo Gudo, Sergio Chicumbe, Kathryn Dovel.

References

1. WHO. Guideline on when to Start Antiretroviral Therapy and on Pre-Exposure Prophylaxis for HIV. Geneva: WHO, 2015.
2. Nsanzimana S, Kanters S, Mills E. Towards Test and Treat Strategy for HIV in Sub-Saharan Africa. 2015; 351(h6839):2 pages. <https://doi.org/10.1136/bmj.h6839> PMID: 26714871
3. UNAIDS. 90-90-90 An ambitious treatment target to help end the AIDS epidemic. Geneva: 2014.
4. Schwitters A, Lederer P, Zilvermit L, Gudo PS, Ramiro I, Cumba L, et al. Barriers to health care in rural Mozambique: a rapid ethnographic assessment of planned mobile health clinics for ART. *Glob Health Sci Pract.* 2015; 3(1):109–16. <https://doi.org/10.9745/GHSP-D-14-00145> PMID: 25745124; PubMed Central PMCID: PMC4356279.
5. Posse M BR. Barriers to access to antiretroviral treatments in Mozambique, as perceived by patients and health workers in urban and rural settings. *AIDS Patient Care and STDs.* 2009; 23(10):867–75. <https://doi.org/10.1089/apc.2009.0050> PMID: 19803678
6. Lahuerta M, Lima J, Nuwagaba-Biribonwoha H, Okamura M, Alvim MF, Fernandes R, et al. Factors associated with late antiretroviral therapy initiation among adults in Mozambique. *PLoS One.* 2012; 7(5):e37125. <https://doi.org/10.1371/journal.pone.0037125> PMID: 22615917; PubMed Central PMCID: PMC3352894.
7. Pati R, Lahuerta M, Elul B, Okamura M, Alvim MF, Schackman B, et al. Factors associated with loss to clinic among HIV patients not yet known to be eligible for antiretroviral therapy (ART) in Mozambique. *J Int AIDS Soc.* 2013; 16:18490. <https://doi.org/10.7448/IAS.16.1.18490> PMID: 23755857; PubMed Central PMCID: PMC3679527.
8. Caluwaerts C, Maendaenda R, Maldonado F, Biot M, Ford N, Chu K. Risk factors and true outcomes for lost to follow-up individuals in an antiretroviral treatment programme in Tete, Mozambique. *Int Health.* 2009; 1(1):97–101. <https://doi.org/10.1016/j.inhe.2009.03.002> PMID: 24036299.
9. Decroo T, Rasschaert F, Telfer B, Remartinez D, Laga M, Ford N. Community-based antiretroviral therapy programs can overcome barriers to retention of patients and decongest health services in sub-Saharan Africa: a systematic review. *Int Health.* 2013; 5(3):169–79. <https://doi.org/10.1093/inthealth/iht016> PMID: 24030268.
10. da Silva M, Blevins M, Wester CW, Manjolo J, Jose E, Gonzalez LC, et al. Patient loss to follow-up before antiretroviral therapy initiation in rural Mozambique. *AIDS Behav.* 2015; 19(4):666–78. <https://doi.org/10.1007/s10461-014-0874-0> PMID: 25096897.
11. Pati R, Lahuerta M, Elul B, Okamura M, Alvim MF, Schackman B, et al. Factors associated with loss to clinic among HIV patients not yet known to be eligible for antiretroviral therapy (ART) in Mozambique. *Journal of the International AIDS Society.* 2013; 16(1). <https://doi.org/10.7448/IAS.16.1.18973>
12. Anglaret X, Scott CA, Walensky RP, Ouattara E, Losina E, Moh R, et al. Could early antiretroviral therapy entail more risks than benefits in sub-Saharan African HIV-infected adults? A model-based analysis. *Antiviral therapy.* 2013; 18(1):45. <https://doi.org/10.3851/IMP2231> PMID: 22809695
13. Katz IT, Essien T, Marinda ET, Gray GE, Bangsberg DR, Martinson NA, et al. Antiretroviral refusal among newly diagnosed HIV-infected adults in Soweto, South Africa. *AIDS (London, England).* 2011; 25(17):2177.
14. Nachege JB, Uthman OA, Del Rio C, Mugavero MJ, Rees H, Mills EJ. Addressing the Achilles' heel in the HIV care continuum for the success of a test-and-treat strategy to achieve an AIDS-free generation. *Clinical Infectious Diseases.* 2014; 59(suppl_1):S21–S7.

15. Clouse K, Schwartz S, Van Rie A, Bassett J, Yende N, Pettifor A. "What They Wanted Was to Give Birth; Nothing Else": Barriers to Retention in Option B+ HIV Care among Postpartum Women in South Africa. *Journal of Acquired Immune Deficiency Syndromes*. 2014; 67(1):e12–e8. <https://doi.org/10.1097/QAI.0000000000000263> PMID: 24977376
16. Katz IT, Bangsberg DR. Cascade of Refusal—What Does It Mean for the Future of Treatment as Prevention in Sub-Saharan Africa? *Current HIV/AIDS Reports*. 2016; 13(2):125–30. <https://doi.org/10.1007/s11904-016-0309-9> PMID: 26894487
17. Cataldo F, Chiwaula L, Nkhata M, van Lettow M, Kasende F, Rosenberg NE, et al. Exploring the Experiences of Women and Health Care Workers in the Context of PMTCT Option B Plus in Malawi. *Journal of Acquired Immune Deficiency Syndromes* (1999). 2017; 74(5):517–22.
18. Katz IT, Dietrich J, Tshabalala G, Essien T, Rough K, Wright AA, et al. Understanding treatment refusal among adults presenting for HIV-testing in Soweto, South Africa: a qualitative study. *AIDS and Behavior*. 2015; 19(4):704–14. <https://doi.org/10.1007/s10461-014-0920-y> PMID: 25304330
19. Govindasamy D, Ford N, Kranzer K. Risk Factors, Barriers and Facilitators for Linkage to Antiretroviral Therapy Care: a Systematic Review. *AIDS*. 2012; 26(16):2059–67. <https://doi.org/10.1097/QAD.0b013e3283578b9b> PMID: 22781227
20. Mshana GH, Wamoyi J, Busza J, Zaba B, Changalucha J, Kaluvya S, et al. Barriers to Accessing Antiretroviral Therapy in Kisesa, Tanzania: a Qualitative Study of Early Rural Referrals to the National Program. *AIDS Patient Care & STDs*. 2006; 20(9):649–57.
21. McMahan SA, Kennedy CE, Winch PJ, Kombe M, Killewo J, Killewo C. Stigma, facility constraints, and personal disbelief: why women disengage from HIV care during and after pregnancy in Morogoro Region, Tanzania. *AIDS and Behavior*. 2017; 21(1):317–29. <https://doi.org/10.1007/s10461-016-1505-8> PMID: 27535755
22. McLean E, Renju J, Wamoyi J, Bukonya D, Ddaaki W, Church K, et al. 'I wanted to safeguard the baby': a qualitative study to understand the experiences of Option B+ for pregnant women and the potential implications for 'test-and-treat' in four sub-Saharan African settings. *Sex Transm Infect*. 2017; 93(Suppl 3):e052972. <https://doi.org/10.1136/sextrans-2016-052972> PMID: 28736391
23. Kim MH, Zhou A, Mazenga A, Ahmed S, Markham C, Zomba G, et al. Why did I stop? Barriers and facilitators to uptake and adherence to ART in Option B+ HIV care in Lilongwe, Malawi. *PloS one*. 2016; 11(2):e0149527. <https://doi.org/10.1371/journal.pone.0149527> PMID: 26901563
24. Instituto_Nacional_de_Saúde, Instituto_Nacional_de_Estatística, ICF_Internacional. Inquérito de Indicadores de Imunização, Malária e HIV/SIDA em Moçambique 2015. Relatório Preliminar de Indicadores de HIV Maputo, Moçambique, and Rockville, Maryland, US: INS, INE and ICF, 2015.
25. PEPFAR. Mozambique Operational Plan (COP/ROP) 2017 Strategic Direction Summary. 2017.
26. Krieger N. Theories for social epidemiology in the 21st century: an ecosocial perspective. *International journal of epidemiology*. 2001; 30(4):668–77. PMID: 11511581
27. Hsieh H-F, Shannon SE. Three approaches to qualitative content analysis. *Qualitative health research*. 2005; 15(9):1277–88. <https://doi.org/10.1177/1049732305276687> PMID: 16204405
28. Nvivo Q. Qualitative Analysis Software Version 11 (2016) QSR International Pty Ltd. 2016.
29. Fereday J, Muir-Cochrane E. Demonstrating Rigor Using Thematic Analysis: A Hybrid Approach of Inductive and Deductive Coding and Theme Development. *International Journal of Qualitative Methods*. 2006; 5(1):80–92.
30. Patel RC, Odoyo J, Anand K, Stanford-Moore G, Wakhungu I, Bukusi EA, et al. Facilitators and Barriers of Antiretroviral Therapy Initiation among HIV Discordant Couples in Kenya: Qualitative Insights from a Pre-Exposure Prophylaxis Implementation Study. *PloS one*. 2016; 11(12):e0168057. <https://doi.org/10.1371/journal.pone.0168057> PMID: 27930740
31. Maeri I, El Ayadi A, Getahun M, Charlebois E, Akatukwasa C, Tumwebaze D, et al. "How can I tell?" Consequences of HIV status disclosure among couples in eastern African communities in the context of an ongoing HIV "test-and-treat" trial. *AIDS care*. 2016; 28(sup3):59–66.
32. Jones DL, Zulu I, Vamos S, Cook R, Chitalu N, Weiss SM. Determinants of engagement in HIV treatment and care among Zambians new to antiretroviral therapy. *Journal of the Association of Nurses in AIDS Care*. 2013; 24(5):e1–e12. <https://doi.org/10.1016/j.jana.2012.06.009> PMID: 23009738
33. Liu Y, Osborn CY, Qian H-Z, Yin L, Xiao D, Ruan Y, et al. Barriers and facilitators of linkage to and engagement in HIV care among HIV-positive men who have sex with men in China: a qualitative study. *AIDS patient care and STDs*. 2016; 30(2):70–7. <https://doi.org/10.1089/apc.2015.0296> PMID: 26784360
34. Musheke M, Bond V, Merten S. Deterrents to HIV-patient initiation of antiretroviral therapy in urban Lusaka, Zambia: a qualitative study. *AIDS patient care and STDs*. 2013; 27(4):231–41. <https://doi.org/10.1089/apc.2012.0341> PMID: 23530573

35. Lambert RF, Orrell C, Bangsberg DR, Haberer JE. Factors that Motivated Otherwise Healthy HIV-Positive Young Adults to Access HIV Testing and Treatment in South Africa. *AIDS and Behavior*. 2017; 22(3):733–41.
36. Layer EH, Kennedy CE, Beckham SW, Mbwambo JK, Likindikoki S, Davis WW, et al. Multi-level factors affecting entry into and engagement in the HIV continuum of care in Iringa, Tanzania. *PLoS One*. 2014; 9(8):e104961. <https://doi.org/10.1371/journal.pone.0104961> PMID: 25119665
37. Inguane CA, Gloyd S, Manuel JL, Brown C, Wong V, Augusto O, et al. Assessment of linkages from HIV testing to enrolment and retention in HIV care in Central Mozambique. *Journal of the International AIDS Society*. 2016; 19(5Suppl 4).
38. Mody A, Roy M, Sikombe K, Savory T, Holmes C, Bolton-Moore C, et al. Improved Retention with Six Month Clinic Return Intervals for Stable HIV-Infected Patients in Zambia. *Clinical Infectious Diseases*. 2017.
39. Young B, Hart RL, Buchacz K, Scott M, Palella F, Brooks JT. HIV viral load monitoring frequency and risk of treatment failure among immunologically stable HIV-infected patients prescribed combination antiretroviral therapy. *Journal of the International Association of Providers of AIDS Care (JIAPAC)*. 2015; 14(6):536–43.
40. Bigna JJR, Plottel CS, Koulla-Shiro S. Challenges in initiating antiretroviral therapy for all HIV-infected people regardless of CD4 cell count. *Infectious Diseases of Poverty*. 2016; 5(1):85. <https://doi.org/10.1186/s40249-016-0179-9> PMID: 27593965
41. Gelaude DJ, Hart J, Carey JW, Denson D, Erickson C, Klein C, et al. HIV Provider Experiences Engaging and Retaining Patients in HIV Care and Treatment: “A Soft Place to Fall”. *Journal of the Association of Nurses in AIDS Care*. 2017; 28(4):491–503. <https://doi.org/10.1016/j.jana.2017.03.006> PMID: 28442187
42. Colasanti J, Stahl N, Farber EW, del Rio C, Armstrong WS. An exploratory study to assess individual and structural level barriers associated with poor retention and re-engagement in care among persons living with HIV/AIDS. *JAIDS Journal of Acquired Immune Deficiency Syndromes*. 2017; 74:S113–S20. <https://doi.org/10.1097/QAI.0000000000001242> PMID: 28079721
43. Hall BJ, Sou K-L, Beanland R, Lacky M, Tso LS, Ma Q, et al. Barriers and facilitators to interventions improving retention in HIV care: a qualitative evidence meta-synthesis. *AIDS and Behavior*. 2017; 21(6):1755–67. <https://doi.org/10.1007/s10461-016-1537-0> PMID: 27582088
44. Musumari PM, Feldman MD, Techasrivichien T, Wouters E, Ono-Kihara M, Kihara M. “If I have nothing to eat, I get angry and push the pills bottle away from me”: A qualitative study of patient determinants of adherence to antiretroviral therapy in the Democratic Republic of Congo. *AIDS care*. 2013; 25(10):1271–7. <https://doi.org/10.1080/09540121.2013.764391> PMID: 23383757
45. Conroy A, Leddy A, Johnson M, Ngubane T, van Rooyen H, Darbes L. ‘I told her this is your life’: relationship dynamics, partner support and adherence to antiretroviral therapy among South African couples. *Culture, health & sexuality*. 2017:1–15.
46. Marzolini C, Telenti A, Decosterd LA, Greub G, Biollaz J, Buclin T. Efavirenz plasma levels can predict treatment failure and central nervous system side effects in HIV-1-infected patients. *Aids*. 2001; 15(1):71–5. PMID: 11192870
47. Seden K, Boffito M, Khoo S. Drug interactions and the role of pharmacokinetic trials in guiding choices in first-line HIV therapy in low-income and middle-income countries. *Current Opinion in HIV and AIDS*. 2017; 12(4):377–82. <https://doi.org/10.1097/COH.0000000000000384> PMID: 28570369
48. Horter S, Thabede Z, Dlamini V, Bernays S, Stringer B, Mazibuko S, et al. “Life is so Easy on ART, Once You Accept It”: Acceptance, Denial and Linkage to HIV care in Shiselweni, Swaziland. *Social Science & Medicine*. 2017; 176:52–9.
49. Derksen L, Muula A, Matengeni A, van Lettow M, Sodhi S, van Oosterhout J, editors. Reducing stigma and increasing HIV testing with a health information intervention, a cluster-randomized trial from Malawi. Eighth International AIDS Society Conference on HIV Pathogenesis, Treatment, and Prevention Vancouver, Canada: IAS; 2015.
50. Hodgson I, Plummer ML, Konopka SN, Colvin CJ, Jonas E, Albertini J, et al. A systematic review of individual and contextual factors affecting ART initiation, adherence, and retention for HIV-infected pregnant and postpartum women. *PLoS One*. 2014; 9(11):e111421. <https://doi.org/10.1371/journal.pone.0111421> PMID: 25372479
51. Keane J, Pharr JR, Buttner MP, Ezeanolue EE. Interventions to Reduce Loss to Follow-up During All Stages of the HIV Care Continuum in Sub-Saharan Africa: A Systematic Review. *AIDS and Behavior*. 2017; 21(6):1745–54. <https://doi.org/10.1007/s10461-016-1532-5> PMID: 27578001
52. Hardon AP, Akurut D, Comoro C, Ekezie C, Irunde HF, Gerrits T, et al. Hunger, waiting time and transport costs: time to confront challenges to ART adherence in Africa. *AIDS care*. 2007; 19(5):658–65. <https://doi.org/10.1080/09540120701244943> PMID: 17505927

53. Hoffman R, Bardon A, Rosen S, Fox M, Kalua T, Xulu T, et al. Varying intervals of antiretroviral medication dispensing to improve outcomes for HIV patients (The INTERVAL Study): study protocol for a randomized controlled trial. *Trials*. 2017; 18(1):476. <https://doi.org/10.1186/s13063-017-2177-z> PMID: [29029644](https://pubmed.ncbi.nlm.nih.gov/29029644/)