

UC Irvine

UC Irvine Previously Published Works

Title

X-ray Crystallography Reveals Parallel and Antiparallel β -Sheet Dimers of a β -Hairpin Derived from A β 16-36 that Assemble to Form Different Tetramers.

Permalink

<https://escholarship.org/uc/item/1191b7vh>

Journal

ACS Chemical Neuroscience, 11(15)

Authors

Kreutzer, Adam

Samdin, Tuan

Guaglianone, Gretchen

et al.

Publication Date

2020-08-05

DOI

10.1021/acchemneuro.0c00290

Peer reviewed



HHS Public Access

Author manuscript

ACS Chem Neurosci. Author manuscript; available in PMC 2021 August 05.

Published in final edited form as:

ACS Chem Neurosci. 2020 August 05; 11(15): 2340–2347. doi:10.1021/acscchemneuro.0c00290.

X-Ray Crystallography Reveals Parallel and Antiparallel β -Sheet Dimers of a β -Hairpin Derived from $A\beta_{16-36}$ that Assemble to Form Different Tetramers

Adam G. Kreutzer^a, Tuan D. Samdin^a, Gretchen Guaglianone^a, Ryan K. Spencer^a, James S. Nowick^{a,b}

^aDepartment of Chemistry, University of California, Irvine, California 92697-2025, United States

^bDepartment of Pharmaceutical Sciences, University of California, Irvine, California 92697-2025, United States

Abstract

High-resolution structures of oligomers formed by the β -amyloid peptide, $A\beta$, are important for understanding the molecular basis of Alzheimer's disease. Dimers of $A\beta$ are linked to the pathogenesis and progression of Alzheimer's disease, and tetramers of $A\beta$ are neurotoxic. This paper reports the X-ray crystallographic structures of dimers and tetramers, as well as an octamer, formed by a peptide derived from the central and C-terminal regions of $A\beta$. In the crystal lattice, the peptide assembles to form two different dimers—an antiparallel β -sheet dimer and a parallel β -sheet dimer—that each further self-assemble to form two different tetramers—a sandwich-like tetramer and a twisted β -sheet tetramer. The structures of these dimers and tetramers derived from $A\beta$ serve as potential models for dimers and tetramers of full-length $A\beta$ that form *in vitro* and in Alzheimer's disease brains.

Graphical Abstract

Corresponding Author: jsnowick@uci.edu.

Author Contributions

A.G.K., R.K.S., and J.S.N. conceived and designed the paper. A.G.K. and G.G. synthesized peptide **1**. A.G.K. performed the X-ray crystallography studies. T.S. performed the REMD studies. A.G.K. and J.S.N. wrote the manuscript. All authors read and approved the manuscript.

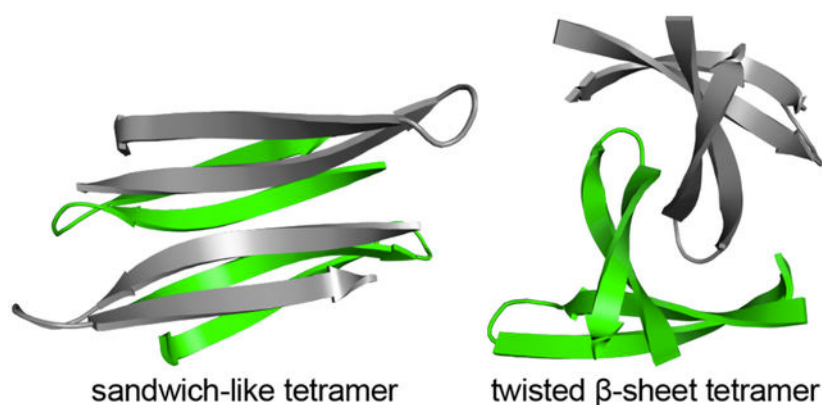
Supporting Information

The Supporting Information is available free of charge on the ACS Publications website at <http://pubs.acs.org/>.

(1) Procedures for the synthesis of peptide **1**, crystallization of peptide **1**, preparation of $A\beta$ oligomers, SDS-PAGE and silver staining, and replica-exchange molecular dynamics; (2) details of X-ray crystallographic data collection, processing, and refinement; (3) characterization data for peptide **1** (PDF). Crystallographic data for peptide **1** (cif file).

Crystallographic coordinates of peptide **1** were deposited into the Protein Data Bank (PDB) with code 6WXM.

The authors declare no competing financial interest.



Keywords

Amyloid; A β ; Oligomer; Dimer; Tetramer; Crystal Structure; Alzheimer's Disease

INTRODUCTION

Interactions among β -sheets are ubiquitous in protein folding and protein-protein interactions. The self-assembly of β -sheets is particularly important in the aggregation of amyloidogenic peptides and proteins to form oligomers and fibrils. Understanding how β -sheets fold and assemble to form amyloid oligomers and fibrils is fundamental to peptide and protein science and is also important for understanding devastating diseases such as Alzheimer's disease, Parkinson's disease, and type II diabetes. Recent cryo-EM structural studies of amyloid fibrils have revealed a rich tapestry of β -sheet assemblies composed of continuous extended networks of parallel β -sheets that fold and intricately pack together.^{1,2,3,4,5,6,7,8,9,10,11,12,13,14,15,16} The structures of amyloid oligomers remain more elusive. X-ray crystallographic studies of fragments of amyloidogenic peptides and proteins, as well as NMR studies of full-length proteins, have provided clues about amyloid oligomer structures indicating that many amyloid oligomers are composed of antiparallel β -sheets and packed hydrophobic cores.^{17,18,19,20,21,22,23,24,25,26}

The β -amyloid peptide, A β , assembles to form oligomers that vary in size and shape and are thought to be important in the pathogenesis and progression of Alzheimer's disease.^{27,28} Elucidating the structures of these oligomers is central to understanding the molecular basis of Alzheimer's disease. Recently, our laboratory has elucidated a wealth of X-ray crystallographic structures of oligomers formed by peptides designed to mimic A β β -hairpins. In studying these peptides, we have discovered new structural motifs for A β oligomers including triangular trimers, barrel-like and sandwich-like hexamers, ball-shaped dodecamers, and large annular pore-like structures.^{29,30,31,32,33,34} These structures have revealed the novel and unpredictable ways that β -hairpin peptides containing A β sequences can fit together to form oligomers, and may also help shed light on the structures of oligomers that full-length A β forms in Alzheimer's disease.

In the current paper, we report the X-ray crystallographic structures of two different β -sheet dimers—one antiparallel β -sheet dimer and one parallel β -sheet dimer—formed by peptide **1**, a β -hairpin derived from A β _{16–36}. In the crystal lattice, these two dimers self-assemble to form different tetramers. The antiparallel dimer self-assembles with another antiparallel dimer to form a sandwich-like tetramer stabilized by a tightly packed hydrophobic core. In contrast, the parallel dimer self-assembles with another parallel dimer to form a tetramer composed of a highly twisted eight-stranded β -sheet. The parallel tetramer is stabilized by hydrophobic packing and edge-to-edge hydrogen bonding between the two parallel dimers. These oligomer structures further illustrate the remarkable ways in which β -hairpins derived from A β can interact to form oligomers, and add to the diversity of oligomers that β -hairpins can form.

RESULTS AND DISCUSSION

Design of peptide **1**.

Peptide **1** is designed to mimic a β -hairpin formed by A β _{16–36} (Figures 1A and B). Peptide **1** contains A β residues 16–36 linked together at the *N*- and *C*-termini with a δ -linked ornithine turn unit and also contains a cross-strand disulfide bond in place of Ala₂₁ and Ile₃₁ to stabilize the β -hairpin structure.³⁵ The disulfide bond at this position maintains the hydrophobic character of this region of the peptide. Peptide **1** also contains an *N*-methyl group on Gly₃₃ to block uncontrolled aggregation of the peptide. These design features facilitate crystallization of the peptide. Variants of peptide **1** without the cross-strand disulfide bond or without the *N*-methyl group did not crystallize in any of the 864 different crystallization conditions tested. To facilitate determination of the X-ray crystallographic phases, peptide **1** also contains a *para*-iodo group on Phe₁₉.³⁶

X-ray crystallographic structure of peptide **1**.

The X-ray crystallographic structure of peptide **1** reveals that the peptide folds to form a twisted β -hairpin and that the β -hairpins assemble to form oligomers. The asymmetric unit of the X-ray crystallographic structure contains 11 copies of peptide **1**. Each copy folds to form a β -hairpin that is composed of an A β _{16–23} β -strand and an A β _{27–36} β -strand connected by an A β _{24–28} loop (Figure 1C). The peptide backbones of the β -strands share comparable geometries for all 11 copies of peptide **1** in the asymmetric unit, while the loop regions vary (Figure 1D).

In the crystal lattice, peptide **1** forms assemblies that may be thought of as oligomers. Peptide **1** forms two different β -sheet dimers—an antiparallel β -sheet dimer and a parallel β -sheet dimer. Both dimers comprise four-stranded β -sheets. The antiparallel dimer further assembles with another antiparallel dimer to form a sandwich-like tetramer. The parallel dimer further assembles with another parallel dimer to form a twisted β -sheet tetramer. Two of these twisted β -sheet tetramers further assemble to form an octamer. An additional antiparallel dimer, that is not part of a tetramer, rests upon the octamer in the crystal lattice. The following describes these oligomers in detail.

Antiparallel dimer.

The antiparallel dimer formed by peptide **1** consists of two peptide monomers arranged in an antiparallel orientation in which the A β_{16-23} β -strand of one monomer is across from the A β_{16-23} β -strand of the other monomer (Figure 2A). Five hydrogen-bonding interactions between the amide backbones of the two monomers stabilize the antiparallel dimer: Phe₁₉^I and Cys₂₁ on one monomer pair with Cys₂₁ and Phe₁₉^I on the other monomer; a water molecule bridges Asp₂₃ on one monomer and Leu₁₇ on the other monomer.

Parallel dimer.

The parallel dimer formed by peptide **1** consists of two peptide monomers arranged in a parallel orientation in which the A β_{16-23} β -strand of one monomer is across from the A β_{16-23} β -strand of the other monomer (Figure 2B). Four hydrogen bonds between the amide backbones of the two monomers stabilize the parallel dimer: Phe₂₀ and Cys₂₁ on one monomer pair with Phe₁₉^I and Phe₂₀ on the other monomer; a water molecule bridges Phe₁₉^I on one monomer and Leu₁₇ on the other monomer.

The antiparallel dimer and the parallel dimer each self-assemble to form different tetramers. The antiparallel dimer assembles with another antiparallel dimer to form a sandwich-like tetramer, whereas the parallel dimer assembles with another parallel dimer to form a highly twisted β -sheet tetramer. The twisted β -sheet tetramer further assembles with another twisted β -sheet tetramer to form an octamer.

Sandwich-like tetramer formed by the antiparallel dimer.

Two antiparallel dimers further assemble to form a sandwich-like tetramer (Figure 3A). The sandwich-like tetramer is stabilized by packing between the two antiparallel dimers to create a hydrophobic core (Figure 3B). In the hydrophobic core, the side chains of Val₁₈, Phe₂₀, Ile₃₂, Leu₃₄, and Val₃₆ from four copies of peptide **1** pack together, creating a dense core containing 20 hydrophobic amino acid side chains. The hydrophilic A β_{25-27} loops extend off of the sandwich-like tetramer and do not make any significant contacts.

Twisted β -sheet tetramer formed by the parallel dimer.

Two parallel dimers further assemble in a parallel orientation to form a highly twisted β -sheet tetramer comprising an eight-stranded β -sheet (Figures 4A and B). In the twisted β -sheet tetramer, the A β_{27-36} β -strand of one dimer is across from the A β_{27-36} β -strand of the other dimer. Four hydrogen bonds between the amide backbones of the two parallel dimers stabilize the twisted β -sheet tetramer: Gly₂₉ and Cys₃₁ on one parallel dimer pair with Lys₂₈ and Ala₃₀ on the other parallel dimer. The twisted β -sheet tetramer is further stabilized by hydrophobic packing between the two parallel dimers to create a hydrophobic core (Figure 4C). In the hydrophobic core, the side chains of Phe₁₉^I, Phe₂₀, Cys₂₁, Val₂₄, Ala₃₀, Cys₃₁, Ile₃₂, Leu₃₄, and Val₃₆ of each parallel dimer pack together, creating a dense core containing 18 hydrophobic amino acid side chains.

Octamer.

Two twisted β -sheet tetramers further assemble to form an octamer. The inner four β -hairpin monomers of the octamer create a continuous hydrogen-bonding network containing 12 intermolecular hydrogen bonds between the peptide backbones (Figure 5A). Packing between hydrophobic residues on the inner four β -hairpin monomers further stabilizes the octamer. The side chains of Leu₁₇, Phe₁₉^I, Phe₂₀, Ile₃₂, Leu₃₄, Met₃₅, and Val₃₆ pack together, creating a core containing 22 hydrophobic amino acid side chains.

The dimers, tetramers, and octamer are all part of the same crystal lattice.

The assembly of peptide **1** into a crystal lattice reveals the ways in which the peptide can self-assemble with other copies of the peptide to form oligomers. The oligomers described above are all part of the same crystal lattice. The asymmetric unit of the X-ray crystallographic structure of peptide **1** contains 11 copies of the peptide (Figure 6A). The asymmetric unit contains two crystallographically unique twisted β -sheet tetramers that comprise the octamer (Figure 6B, cyan strands). The octamer is flanked by three additional copies of peptide **1**: Two copies — by a symmetry operation — comprise the sandwich-like tetramer (Figure 6B, magenta strands). One copy — by a symmetry operation — forms an antiparallel dimer that rests upon the octamer in the crystal lattice (Figure 6B, yellow strands).

Oligomers of A β ₄₀ and A β ₄₂ in SDS-PAGE.

Dimers and tetramers of synthetic or expressed A β have been observed to form *in vitro*. In SDS-PAGE, A β ₄₀ predominantly forms two oligomers that migrate at molecular weights consistent with a dimer and tetramer, in addition to the monomer (Figure 7). A β ₄₂ predominantly forms two oligomers that migrate at molecular weights consistent with a trimer and tetramer, in addition to the monomer (Figure 7). The structures of these oligomers are unknown. The parallel and antiparallel dimers formed by peptide **1** provide two potential structural models for the dimer formed by A β ₄₀ in SDS-PAGE. Furthermore, the sandwich-like tetramer and twisted β -sheet tetramer formed by peptide **1** provide potential structural models for the tetramers formed by A β ₄₀ and A β ₄₂ in SDS-PAGE.

Crystallographically based models of two A β ₁₂₋₄₀ tetramers.

We envision that the full-length A β peptide can assemble in the same fashion as peptide **1** to form sandwich-like tetramers and twisted β -sheet tetramers. To better understand what a sandwich-like tetramer (dimer of antiparallel dimers) and a twisted β -sheet tetramer (dimer of parallel dimers) containing full-length A β might look like, we modeled A β ₁₂₋₄₀ into the crystallographic coordinates of each tetramer.³⁷ We first appended the *N*- and *C*-terminal regions 12–15 (VHHQ) and 37–40 (GGVV) onto the crystallographic coordinates of the four peptide **1** monomers that comprise each tetramer, and mutated all modified residues back to the native residues. We then performed replica-exchange molecular dynamics (REMD) to generate realistic conformations the *N*- and *C*-terminal regions of the β -hairpins (Figures 8A and B).^{38,39} In these models, the β -hairpins constitute the cores of the tetramers, and the *N*- and *C*-termini surround the cores. The REMD simulations shows that both tetramers can accommodate the *N*- and *C*-terminal residues without steric clashes and

suggests that full-length A β could form a sandwich-like tetramer or a twisted β -sheet tetramer.

The structures of the dimers and tetramers formed by peptide **1** provide new models for A β oligomers. A β dimers are thought to have special significance in the pathogenesis and progression of Alzheimer's disease. A β plaques from Alzheimer's disease patients contain cross-linked A β dimers that are composed of different A β alloforms.⁴⁰ A β dimers appear to be the building blocks of large, mildly cytotoxic oligomers with molecular weights ranging from 150–650 kDa.⁴¹ A β dimers also promote phosphorylation and aggregation of the microtubule-associated protein tau, which is also involved in Alzheimer's disease progression.⁴² The structures of these dimers are unknown. The parallel and antiparallel β -sheet dimers formed by peptide **1** provide two potential structural models for the dimers observed in Alzheimer's disease brains.

A β tetramers have been observed in protein extracts from Alzheimer's disease brains, but their exact roles in the pathogenesis and progression of the disease is less clear than that of dimers.^{43,44} A β tetramers prepared *in vitro* are toxic toward both neuroblastoma cells and cultured hippocampal neurons.^{45,46} Furthermore, covalently stabilized A β tetramers prepared using photo-induced cross-linking of unmodified proteins (PICUP) interact with the cell membranes of hippocampal neurons.⁴⁷ The structures of the A β tetramers in these studies are unknown. The sandwich-like tetramer and twisted β -sheet tetramer formed by peptide **1** provide two potential structural models for the tetramers observed in Alzheimer's disease brains, as well as the tetramers prepared *in vitro*.

CONCLUSIONS

The structures of the dimers, tetramers, and octamer formed by peptide **1** contribute to the rich structural landscape of amyloidogenic peptides and proteins. CryoEM structures of fibrils formed by amyloidogenic peptides and proteins such as A β , islet amyloid polypeptide, tau, α -synuclein, and human prion protein have revealed that the peptides and proteins adopt highly convoluted shapes and pack together to form twisted filaments.^{8,10,12,13,14,15,16} The twisted shapes of the oligomers formed by peptide **1** are distinct from the twists of fibrils and filaments. The structure of the sandwich-like tetramer formed by peptide **1** (PDB 6WXM) is reminiscent of the A β tetramer reported by Streltsov *et al.* (PDB 3MOQ), as well as the tetramer formed by transthyretin (*e.g.*, PDB 1TTC).^{21,48} It is also evocative of the A β tetramer and octamer structural models from Ciudad *et al.* (PDB 6RHY).²⁶ Prominent features of these structures include antiparallel β -hairpins that pack together in a sandwich-like fashion to form a hydrophobic core, much like the sandwich-like tetramer formed by peptide **1**.

The parallel and antiparallel β -sheet dimers, the sandwich-like and twisted β -sheet tetramers, and the octamer formed by peptide **1** add to the diversity of A β -derived oligomers observed by our laboratory. In studying, β -hairpin peptides that contain the central and C-terminal regions of A β , we have discovered a variety of different structures (Figure 9). These structures reveal the intricate ways that A β β -hairpins can fit together to form compact oligomers that are stabilized by edge-to-edge hydrogen bonding interactions and

hydrophobic cores. We believe the variety of structures we have observed exemplifies the heterogeneity of oligomers formed by A β *in vitro* and in the brain. Investigating the exact relationship between the oligomer structures we have observed crystallographically and the structures of A β oligomers in Alzheimer's disease is an active area of research in our laboratory, and we will report our findings from these studies in due course.

METHODS

Synthesis of peptide **1**, X-ray crystallographic procedures, A β oligomer preparation, SDS-PAGE and silver staining, and replica-exchange molecular dynamics were performed as described previously.^{29,30,31,32,33} These procedures are restated in detail in the Materials and Methods section in the Supporting Information.

Supplementary Material

Refer to Web version on PubMed Central for supplementary material.

ACKNOWLEDGEMENTS

We thank the National Institutes of Health (NIH) National Institute of General Medical Sciences (NIGMS) for funding (Grant GM097562).

REFERENCES AND NOTES

1. Paravastu AK, Leapman RD, Yau WM, Tycko R. Molecular structural basis for polymorphism in Alzheimer's beta-amyloid fibrils. *Proc Natl Acad Sci U S A*. 2008 Nov 25;105(47):18349–54. Epub 2008 Nov 17. [PubMed: 19015532]
2. Petkova AT, Yau WM, Tycko R. Experimental constraints on quaternary structure in Alzheimer's beta-amyloid fibrils. *Biochemistry*. 2006 Jan 17;45(2):498–512. [PubMed: 16401079]
3. Lu JX, Qiang W, Yau WM, Schwieters CD, Meredith SC, Tycko R. Molecular structure of β -amyloid fibrils in Alzheimer's disease brain tissue. *Cell*. 2013 Sep 12;154(6):1257–68. [PubMed: 24034249]
4. Qiang W, Yau WM, Luo Y, Mattson MP, Tycko R. Antiparallel β -sheet architecture in Iowa-mutant β -amyloid fibrils. *Proc Natl Acad Sci U S A*. 2012 Mar 20;109(12):4443–8. Epub 2012 Mar 8. [PubMed: 22403062]
5. Wälti MA, Ravotti F, Arai H, Glabe CG, Wall JS, Böckmann A, Güntert P, Meier BH, Riek R. Atomic-resolution structure of a disease-relevant A β (1–42) amyloid fibril. *Proc Natl Acad Sci U S A*. 2016 Aug 23;113(34):E4976–84. Epub 2016 Jul 28. [PubMed: 27469165]
6. Colvin MT, Silvers R, Ni QZ, Can TV, Sergeev I, Rosay M, Donovan KJ, Michael B, Wall J, Linse S, Griffin RG. Atomic Resolution Structure of Monomorphic A β 42 Amyloid Fibrils. *J Am Chem Soc*. 2016 Aug 3;138(30):9663–74. [PubMed: 27355699]
7. Xiao Y, Ma B, McElheny D, Parthasarathy S, Long F, Hoshi M, Nussinov R, Ishii Y. A β (1–42) fibril structure illuminates self-recognition and replication of amyloid in Alzheimer's disease. *Nat Struct Mol Biol*. 2015 Jun;22(6):499–505. Epub 2015 May 4. [PubMed: 25938662]
8. Gremer L, Schölzel D, Schenk C, Reinartz E, Labahn J, Ravelli RBG, Tusche M, Lopez-Iglesias C, Hoyer W, Heise H, Willbold D, Schröder GF. Fibril structure of amyloid- β (1–42) by cryo-electron microscopy. *Science*. 2017 Oct 6;358(6359):116–119. Epub 2017 Sep 7. [PubMed: 28882996]
9. Tuttle MD, Comellas G, Nieuwkoop AJ, Covell DJ, Berthold DA, Kloepper KD, Courtney JM, Kim JK, Barclay AM, Kendall A, Wan W, Stubbs G, Schwieters CD, Lee VM, George JM, Rienstra CM. Solid-state NMR structure of a pathogenic fibril of full-length human α -synuclein. *Nat Struct Mol Biol*. 2016 May;23(5):409–15. Epub 2016 Mar 28. [PubMed: 27018801]

10. Fitzpatrick AWP, Falcon B, He S, Murzin AG, Murshudov G, Garringer HJ, Crowther RA, Ghetti B, Goedert M, Scheres SHW. Cryo-EM structures of tau filaments from Alzheimer's disease. *Nature*. 2017 Jul 13;547(7662):185–190. Epub 2017 Jul 5. [PubMed: 28678775]
11. Dregni AJ, Mandala VS, Wu H, Elkins MR, Wang HK, Hung I, DeGrado WF, Hong M. In vitro 0N4R tau fibrils contain a monomorphic β -sheet core enclosed by dynamically heterogeneous fuzzy coat segments. *Proc Natl Acad Sci U S A*. 2019 Aug 13;116(33):16357–16366. Epub 2019 Jul 29. [PubMed: 31358628]
12. Falcon B, Zhang W, Murzin AG, Murshudov G, Garringer HJ, Vidal R, Crowther RA, Ghetti B, Scheres SHW, Goedert M. Structures of filaments from Pick's disease reveal a novel tau protein fold. *Nature*. 2018 Sep;561(7721):137–140. Epub 2018 Aug 29. [PubMed: 30158706]
13. Kollmer M, Close W, Funk L, Rasmussen J, Bsoul A, Schierhorn A, Schmidt M, Sigurdson CJ, Jucker M, Fändrich M. Cryo-EM structure and polymorphism of A β amyloid fibrils purified from Alzheimer's brain tissue. *Nat Commun*. 2019 Oct 29;10(1):4760. [PubMed: 31664019]
14. Glynn C, Sawaya MR, Ge P, Gallagher-Jones M, Short CW, Bowman R, Apostol M, Zhou ZH, Eisenberg DS, Rodriguez JA. Cryo-EM structure of a human prion fibril with a hydrophobic, protease-resistant core. *Nat Struct Mol Biol*. 2020 May;27(5):417–423. Epub 2020 Apr 13. [PubMed: 32284600]
15. Schweighauser M, Shi Y, Tarutani A, Kametani F, Murzin AG, Ghetti B, Matsubara T, Tomita T, Ando T, Hasegawa K, Murayama S, Yoshida M, Hasegawa M, Scheres SHW, Goedert M. Structures of α -synuclein filaments from multiple system atrophy. *Nature*. 2020 May 27.
16. Röder C, Kupreichyk T, Gremer L, Schäfer LU, Pothula KR, Ravelli RBG, Willbold D, Hoyer W, Schröder GF. Cryo-EM structure of islet amyloid polypeptide fibrils reveals similarities with amyloid- β fibrils. *Nat Struct Mol Biol*. 2020 Jun 15.
17. Laganowsky A, Liu C, Sawaya MR, Whitelegge JP, Park J, Zhao M, Pensalfini A, Soriaga AB, Landau M, Teng PK, Cascio D, Glabe C, Eisenberg D. Atomic view of a toxic amyloid small oligomer. *Science*. 2012 Mar 9;335(6073):1228–31. [PubMed: 22403391]
18. Sangwan S, Zhao A, Adams KL, Jayson CK, Sawaya MR, Guenther EL, Pan AC, Ngo J, Moore DM, Soriaga AB, Do TD, Goldschmidt L, Nelson R, Bowers MT, Koehler CM, Shaw DE, Novitch BG, Eisenberg DS. Atomic structure of a toxic, oligomeric segment of SOD1 linked to amyotrophic lateral sclerosis (ALS). *Proc Natl Acad Sci U S A*. 2017 Aug 15;114(33):8770–8775. Epub 2017 Jul 31. [PubMed: 28760994]
19. Apostol MI, Perry K, Surewicz WK. Crystal structure of a human prion protein fragment reveals a motif for oligomer formation. *J Am Chem Soc*. 2013 Jul 17;135(28):10202–5. Epub 2013 Jul 2. [PubMed: 23808589]
20. Yu L, Edalji R, Harlan JE, Holzman TF, Lopez AP, Labkovsky B, Hillen H, Barghorn S, Ebert U, Richardson PL, Miesbauer L, Solomon L, Bartley D, Walter K, Johnson RW, Hajduk PJ, Olejniczak ET. Structural characterization of a soluble amyloid beta-peptide oligomer. *Biochemistry*. 2009 Mar 10;48(9):1870–7. [PubMed: 19216516]
21. Streltsov VA, Varghese JN, Masters CL, Nuttall SD. Crystal structure of the amyloid- β p3 fragment provides a model for oligomer formation in Alzheimer's disease. *J Neurosci*. 2011 Jan 26;31(4):1419–26. [PubMed: 21273426]
22. Chimon S, Shaibat MA, Jones CR, Calero DC, Aizezi B, Ishii Y. Evidence of fibril-like β -sheet structures in a neurotoxic amyloid intermediate of Alzheimer's β -amyloid. *Nat Struct Mol Biol*. 2007 Dec;14(12):1157–64. [PubMed: 18059284]
23. Ahmed M, Davis J, Aucoin D, Sato T, Ahuja S, Aimoto S, Elliott JI, Van Nostrand WE, Smith SO. Structural conversion of neurotoxic amyloid-beta(1–42) oligomers to fibrils. *Nat Struct Mol Biol*. 2010 May;17(5):561–7. Epub 2010 Apr 11. [PubMed: 20383142]
24. Huang D, Zimmerman MI, Martin PK, Nix AJ, Rosenberry TL, Paravastu AK. Antiparallel β -Sheet Structure within the C-Terminal Region of 42-Residue Alzheimer's Amyloid- β Peptides When They Form 150-kDa Oligomers. *J Mol Biol*. 2015 Jul 3;427(13):2319–28. Epub 2015 Apr 16. [PubMed: 25889972]
25. Lendel C, Bjerring M, Dubnovitsky A, Kelly RT, Filippov A, Antzutkin ON, Nielsen NC, Härd T. A hexameric peptide barrel as building block of amyloid- β protofibrils. *Angew Chem Int Ed Engl*. 2014 Nov 17;53(47):12756–60. Epub 2014 Sep 26. [PubMed: 25256598]

26. Ciudad S, Puig E, Botzanowski T, Meigooni M, Arango AS, Do J, Mayzel M, Bayoumi M, Chaignepain S, Maglia G, Cianferani S, Orekhov V, Tajkhorshid E, Bardiaux B, Carulla N. A β (1–42) tetramer and octamer structures reveal edge conductivity pores as a mechanism for membrane damage. *Nat Commun*. 2020 Jun 15;11(1):3014. [PubMed: 32541820]
27. Benilova I, Karran E, De Strooper B. The toxic A β oligomer and Alzheimer's disease: an emperor in need of clothes. *Nat Neurosci*. 2012 Jan 29;15(3):349–57. Review. [PubMed: 22286176]
28. Larson ME, Lesné SE. Soluble A β oligomer production and toxicity. *J Neurochem*. 2012 Jan;120 Suppl 1:125–39. Epub 2011 Nov 28. Review.
29. Spencer RK, Li H, Nowick JS. X-ray crystallographic structures of trimers and higher-order oligomeric assemblies of a peptide derived from A β (17–36). *J Am Chem Soc*. 2014 Apr 16;136(15):5595–8. Epub 2014 Apr 3. [PubMed: 24669800]
30. Kreutzer AG, Yoo S, Spencer RK, Nowick JS. Stabilization, Assembly, and Toxicity of Trimers Derived from A β . *J Am Chem Soc*. 2017 Jan 18;139(2):966–975. Epub 2017 Jan 10. [PubMed: 28001392]
31. Kreutzer AG, Hamza IL, Spencer RK, Nowick JS. X-ray Crystallographic Structures of a Trimer, Dodecamer, and Annular Pore Formed by an A β 17–36 β -Hairpin. *J Am Chem Soc*. 2016 Apr 6;138(13):4634–42. Epub 2016 Mar 29. [PubMed: 26967810]
32. Salveson PJ, Spencer RK, Kreutzer AG, Nowick JS. X-ray Crystallographic Structure of a Compact Dodecamer from a Peptide Derived from A β (16–36). *Org Lett*. 2017 Jul 7;19(13):3462–3465. Epub 2017 Jun 15. [PubMed: 28683555]
33. Kreutzer AG, Spencer RK, McKnelly KJ, Yoo S, Hamza IL, Salveson PJ, Nowick JS. A Hexamer of a Peptide Derived from A β (16–36). *Biochemistry*. 2017 Nov 14;56(45):6061–6071. Epub 2017 Oct 27. [PubMed: 29028351]
34. Kreutzer AG, Nowick JS. Elucidating the Structures of Amyloid Oligomers with Macrocyclic β -Hairpin Peptides: Insights into Alzheimer's Disease and Other Amyloid Diseases. *Acc Chem Res*. 2018 Mar 20;51(3):706–718. Epub 2018 Mar 6. Review. [PubMed: 29508987]
35. Nowick JS, Brower JO. A new turn structure for the formation of beta-hairpins in peptides. *J Am Chem Soc*. 2003 Jan 29;125(4):876–7. [PubMed: 12537479]
36. Mutation of Phe₁₉ to serine has previously been shown to impact the assembly of A β ₄₂. (Marshall KE, Vadukul DM, Dahal L, Theisen A, Fowler MW, Al-Hilaly Y, Ford L, Kemenes G, Day IJ, Staras K, Serpell LC. A critical role for the self-assembly of Amyloid- β 1–42 in neurodegeneration. *Sci Rep*. 2016 7 22;6:30182.)
37. To simplify the REMD simulation and reduce computing time, we truncated the *N*-terminus to Val12.
38. Zhou R Replica exchange molecular dynamics method for protein folding simulation. *Methods Mol Biol*. 2007;350:205–23. [PubMed: 16957325]
39. Phillips JC, Braun R, Wang W, Gumbart J, Tajkhorshid E, Villa E, Chipot C, Skeel RD, Kale L, Schulten K. Scalable molecular dynamics with NAMD. *J Comput Chem* 2005;26:1781–1802. [PubMed: 16222654]
40. Brinkmalm G, Hong W, Wang Z, Liu W, O'Malley TT, Sun X, Frosch MP, Selkoe DJ, Portelius E, Zetterberg H, Blennow K, Walsh DM. Identification of neurotoxic cross-linked amyloid- β dimers in the Alzheimer's brain. *Brain*. 2019 May 1;142(5):1441–1457. [PubMed: 31032851]
41. Yang T, Li S, Xu H, Walsh DM, Selkoe DJ. Large Soluble Oligomers of Amyloid β -Protein from Alzheimer Brain Are Far Less Neuroactive Than the Smaller Oligomers to Which They Dissociate. *J Neurosci*. 2017 Jan 4;37(1):152–163. [PubMed: 28053038]
42. Jin M, Shepardson N, Yang T, Chen G, Walsh D, Selkoe DJ. Soluble amyloid beta-protein dimers isolated from Alzheimer cortex directly induce Tau hyperphosphorylation and neuritic degeneration. *Proc Natl Acad Sci U S A*. 2011 Apr 5;108(14):5819–24. Epub 2011 Mar 18. [PubMed: 21421841]
43. McLean CA, Cherny RA, Fraser FW, Fuller SJ, Smith MJ, Beyreuther K, Bush AI, Masters CL. Soluble pool of Abeta amyloid as a determinant of severity of neurodegeneration in Alzheimer's disease. *Ann Neurol*. 1999 Dec;46(6):860–6. [PubMed: 10589538]

44. Sokolow S, Henkins KM, Bilousova T, Miller CA, Vinters HV, Poon W, Cole GM, Gylys KH. AD synapses contain abundant A β monomer and multiple soluble oligomers, including a 56-kDa assembly. *Neurobiol Aging*. 2012 Aug;33(8):1545–55. Epub 2011 Jul 7. [PubMed: 21741125]
45. Bernstein SL, Dupuis NF, Lazo ND, Wyttenbach T, Condron MM, Bitan G, Teplow DB, Shea JE, Ruotolo BT, Robinson CV, Bowers MT. Amyloid- β protein oligomerization and the importance of tetramers and dodecamers in the aetiology of Alzheimer's disease. *Nat Chem*. 2009 Jul;1(4):326–31. [PubMed: 20703363]
46. Ono K, Condron MM, Teplow DB. Structure-neurotoxicity relationships of amyloid beta-protein oligomers. *Proc Natl Acad Sci USA*. 2009 Sep 1;106(35):14745–50. Epub 2009 Aug 12. [PubMed: 19706468]
47. Jana MK, Cappai R, Pham CL, Ciccotosto GD. Membrane-bound tetramer and trimer A β oligomeric species correlate with toxicity towards cultured neurons. *J Neurochem*. 2016 Feb;136(3):594–608. [PubMed: 26608930]
48. Hamilton JA, Steinrauf LK, Braden BC, Liepnieks J, Benson MD, Holmgren G, Sandgren O, Steen L. The x-ray crystal structure refinements of normal human transthyretin and the amyloidogenic Val-30-->Met variant to 1.7-Å resolution. *J Biol Chem*. 1993 Feb 5;268(4):2416–24. [PubMed: 8428915]

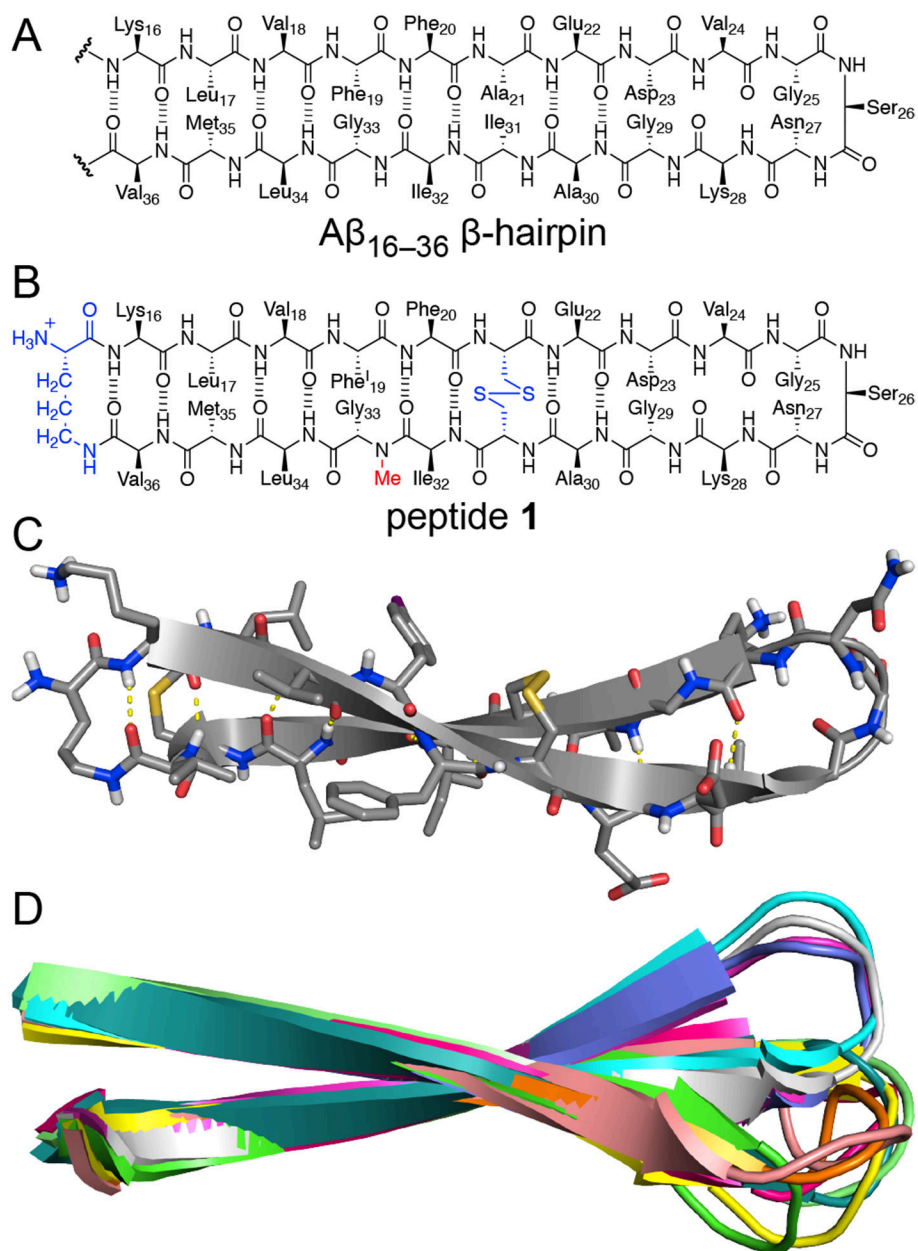


Figure 1. Peptide 1. (A) Chemical structure of an $A\beta_{16-36}$ β -hairpin. (B) Chemical structure of peptide 1. (C) X-ray crystallographic structure of a representative β -hairpin monomer formed by peptide 1 (PDB 6WXM). (D) Overlay of the 11 peptide 1 β -hairpins in the asymmetric unit.

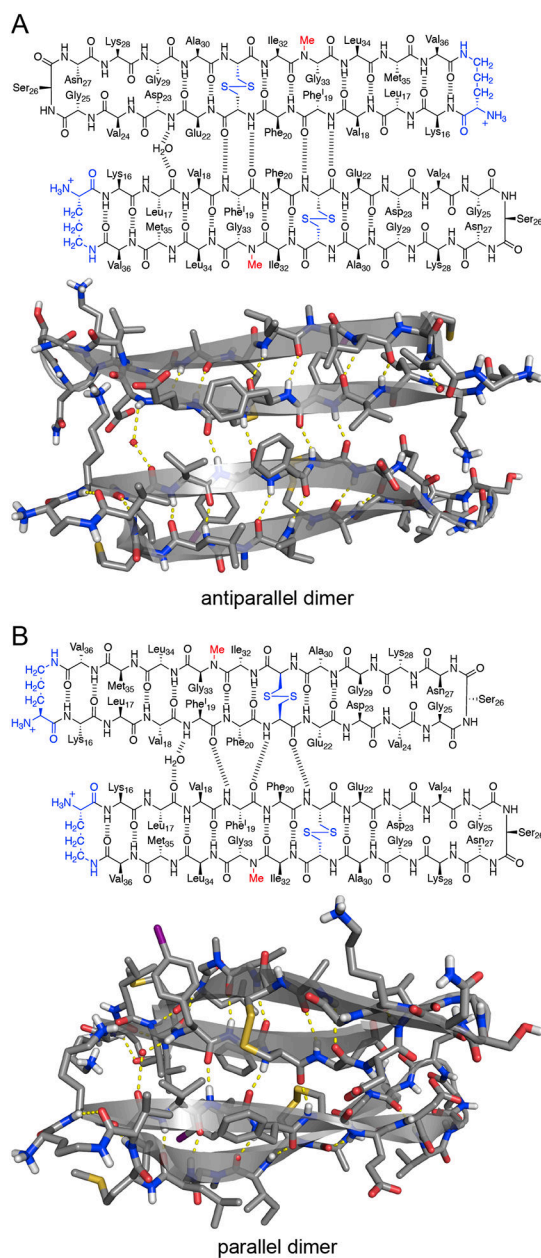


Figure 2. Dimers formed by peptide **1**. (A) Chemical structure (top) and X-ray crystallographic structure (bottom) of the antiparallel dimer formed by peptide **1**. (B) Chemical structure (top) and X-ray crystallographic structure (bottom) of the parallel dimer formed by peptide **1**.

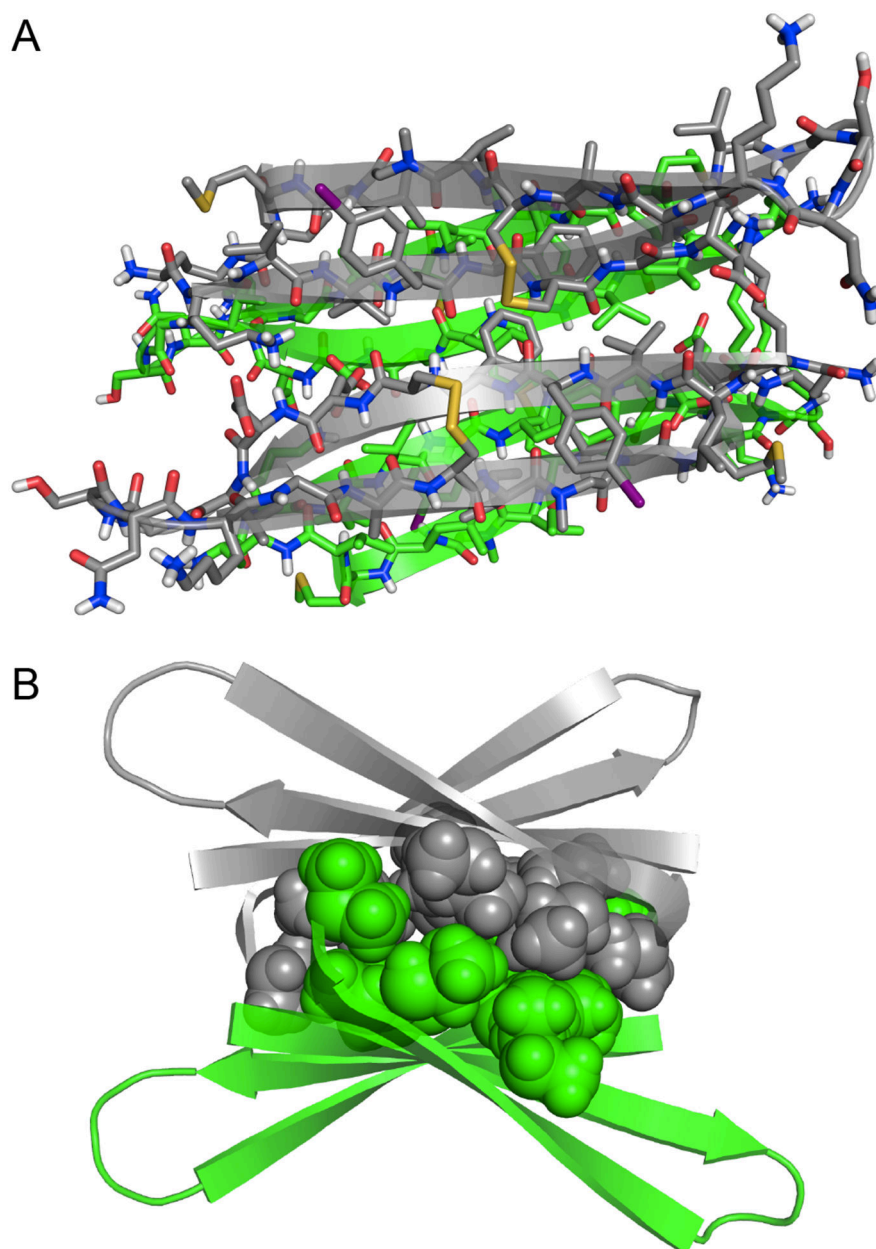


Figure 3. X-ray crystallographic structure of the sandwich-like tetramer (dimer of antiparallel dimers) formed by peptide **1**. (A) Cartoon and stick model of the sandwich-like tetramer. (B) Cartoon and sphere model of the sandwich-like tetramer. The residues that comprise the hydrophobic core are shown as spheres.

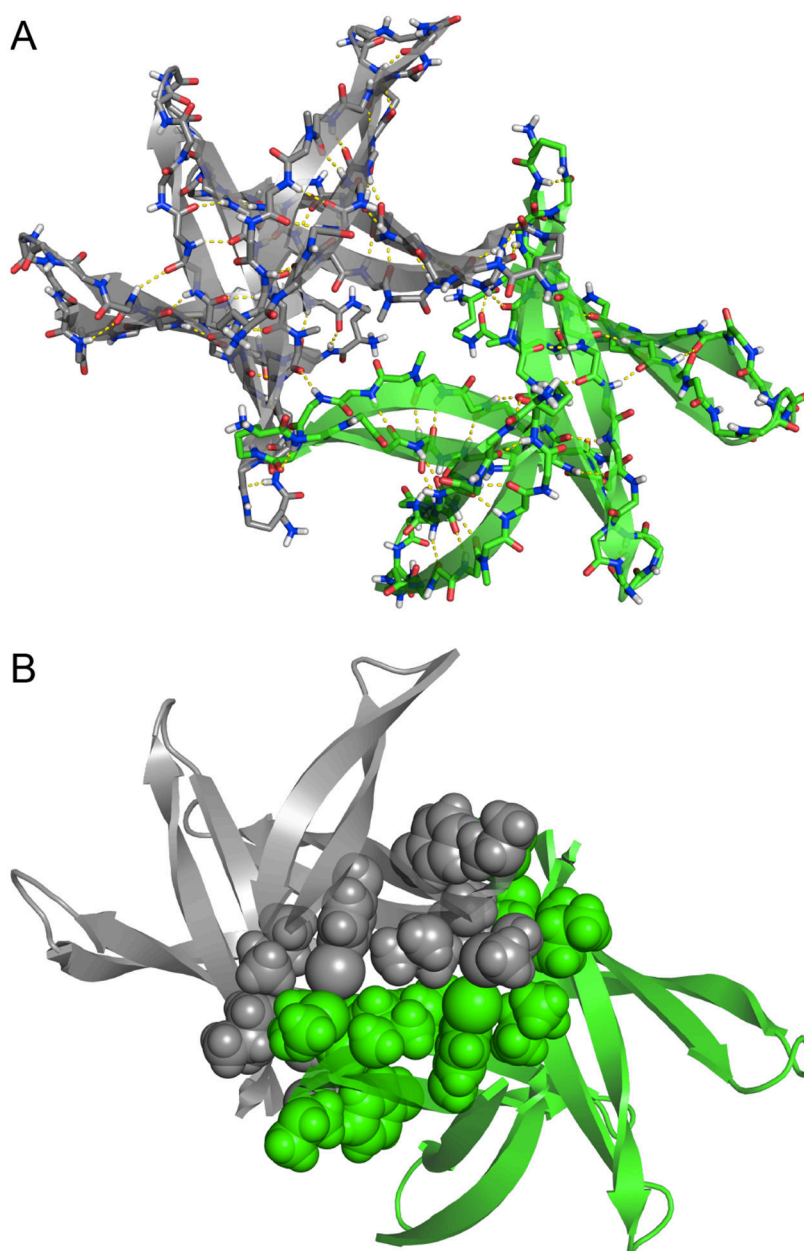


Figure 5. X-ray crystallographic structure of the octamer (dimer of twisted β -sheet tetramers) formed by peptide **1**. (A) Cartoon and stick model of the octamer (side chains are omitted for clarity). (B) Cartoon and sphere model of the octamer illustrating the hydrophobic packing between the two twisted β -sheet tetramers. The side chains of the hydrophobic core are shown as spheres.

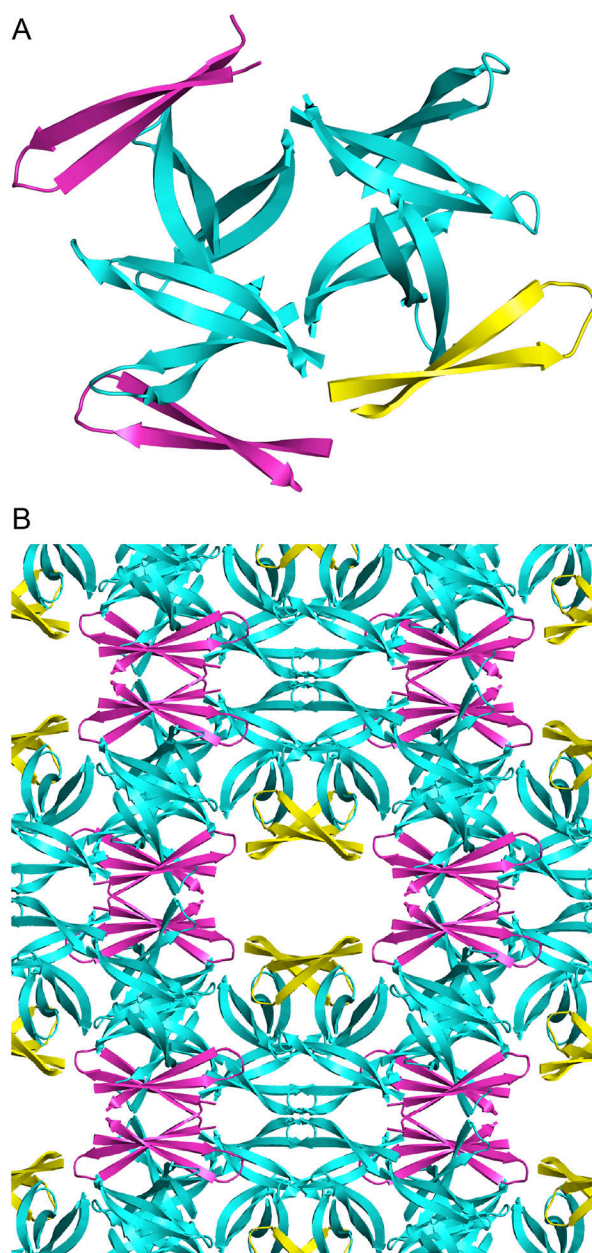


Figure 6. (A) The asymmetric unit of the X-ray crystallographic structure of peptide **1**. (B) The crystal lattice of peptide **1**, illustrating the relationship between the sandwich-like tetramer (magenta) and the twisted β -sheet tetramers that comprise the octamer (cyan). An antiparallel dimer that rests on the octamer is shown in yellow.

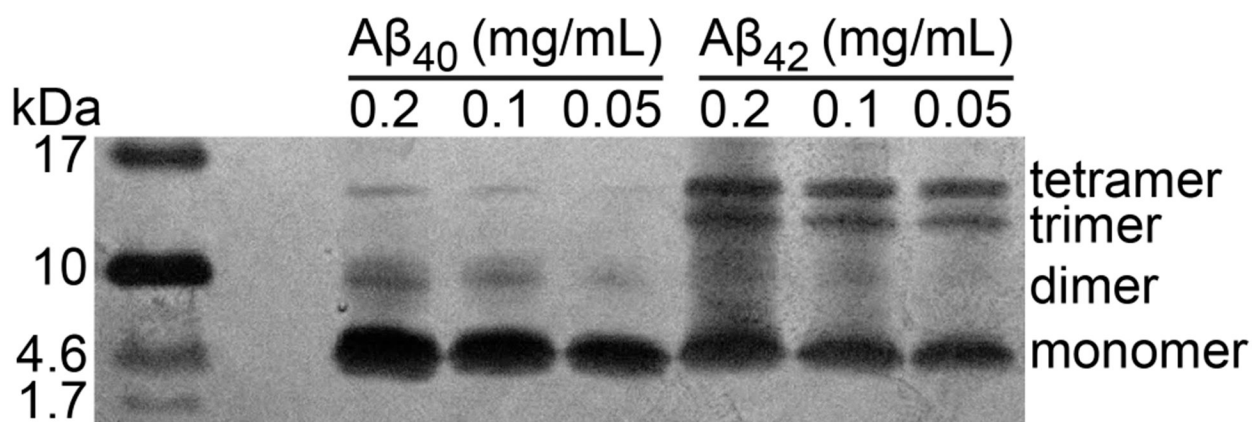


Figure 7. Silver-stained SDS-PAGE of recombinantly expressed $A\beta_{40}$ and $A\beta_{42}$ illustrating the oligomers that the peptides form *in vitro*. A 5- μ L aliquot of each peptide concentration in a serial dilution was run on the gel.

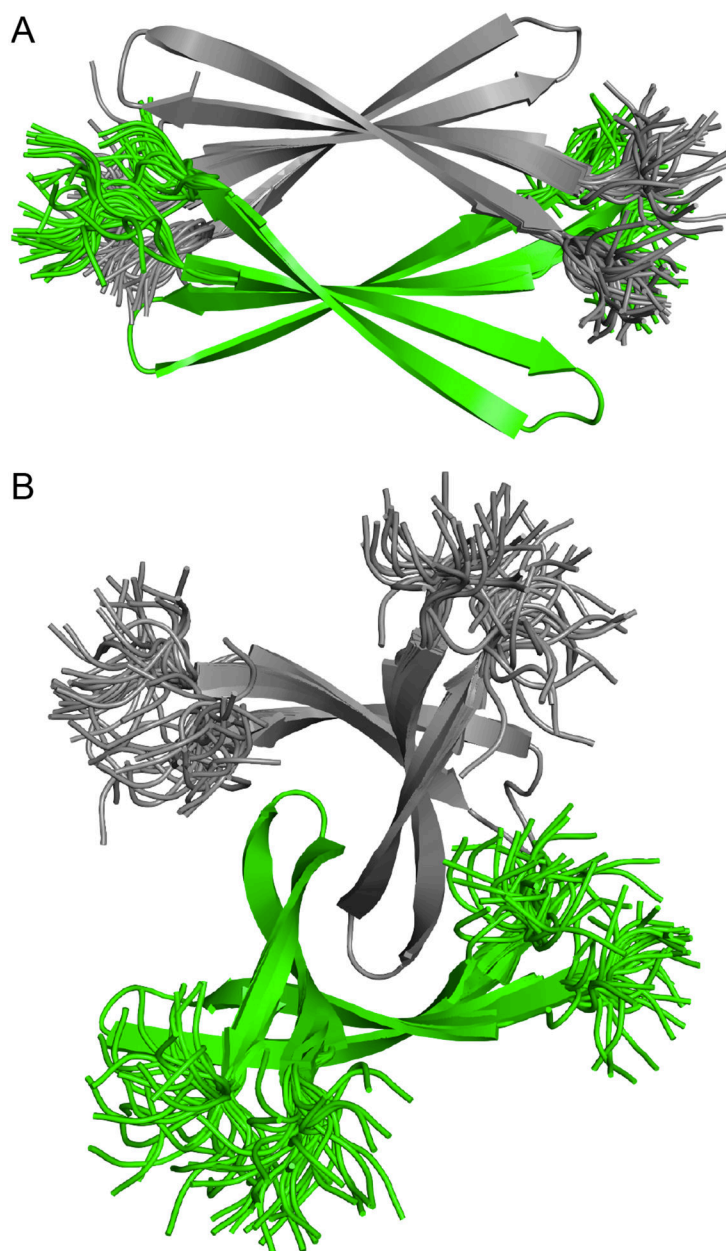


Figure 8. Crystallographically based models of an A β_{12-40} sandwich-like tetramer (A) and an A β_{12-40} twisted β -sheet tetramer (B). Superpositions of 32 structures generated by replica-exchange molecular dynamics.

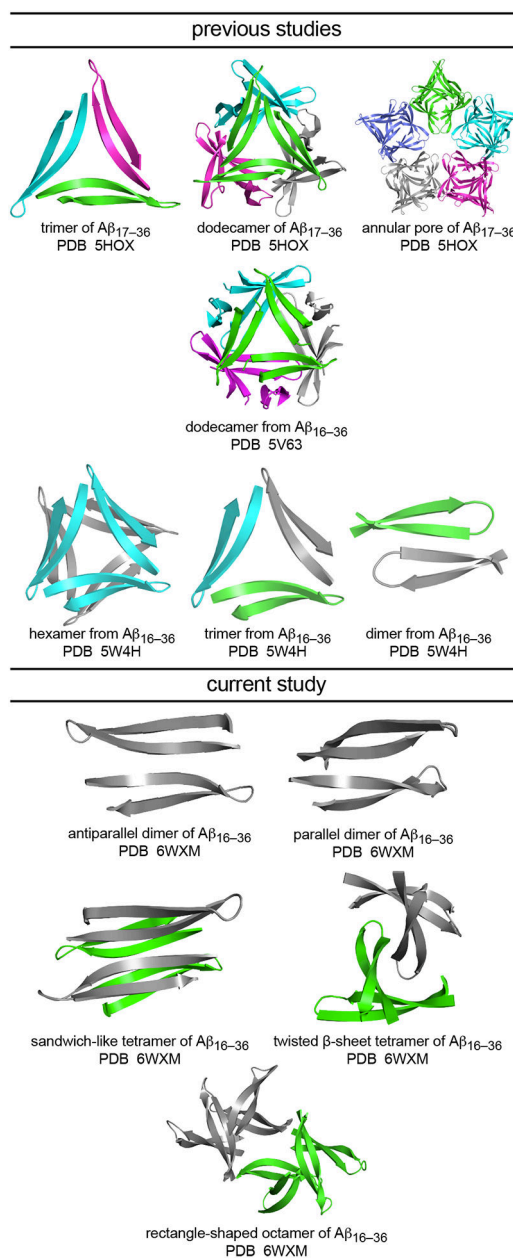


Figure 9. Representative oligomers of A β -derived peptides observed in our laboratory by X-ray crystallography.