

UC Davis

UC Davis Previously Published Works

Title

Placental methylome analysis from a prospective autism study

Permalink

<https://escholarship.org/uc/item/0pn0f6ct>

Journal

Molecular Autism, 7(1)

ISSN

2040-2392

Authors

Schroeder, Diane I
Schmidt, Rebecca J
Crary-Dooley, Florence K
et al.

Publication Date

2016-12-01

DOI

10.1186/s13229-016-0114-8

Peer reviewed

RESEARCH

Open Access



Placental methylome analysis from a prospective autism study

Diane I. Schroeder¹, Rebecca J. Schmidt^{2,6}, Florence K. Crary-Dooley¹, Cheryl K. Walker^{3,6}, Sally Ozonoff^{4,6}, Daniel J. Tancredi⁵, Irva Hertz-Picciotto^{2,6} and Janine M. LaSalle^{1,6*}

Abstract

Background: Autism spectrum disorders (ASD) are increasingly prevalent neurodevelopmental disorders that are behaviorally diagnosed in early childhood. Most ASD cases likely arise from a complex mixture of genetic and environmental factors, an interface where the epigenetic marks of DNA methylation may be useful as risk biomarkers. The placenta is a potentially useful surrogate tissue characterized by a methylation pattern of partially methylated domains (PMDs) and highly methylated domains (HMDs) reflective of methylation patterns observed in the early embryo.

Methods: In this study, we investigated human term placentas from the MARBLES (Markers of Autism Risk in Babies: Learning Early Signs) prospective study by whole genome bisulfite sequencing. We also examined the utility of PMD/HMDs in detecting methylation differences consistent with ASD diagnosis at age three.

Results: We found that while human placental methylomes have highly reproducible PMD and HMD locations, there is a greater variation between individuals in methylation levels over PMDs than HMDs due to both sampling and individual variability. In a comparison of methylation differences in placental samples from 24 ASD and 23 typically developing (TD) children, a HMD containing a putative fetal brain enhancer near *DLL1* was found to reach genome-wide significance and was validated for significantly higher methylation in ASD by pyrosequencing.

Conclusions: These results suggest that the placenta could be an informative surrogate tissue for predictive ASD biomarkers in high-risk families.

Keywords: Epigenetics, Genomics, DNA methylation, Methylome, Placenta, Biomarkers

Background

Autism spectrum disorders (ASD) are currently estimated to affect one in 68 births in the USA [1]. Diagnosis of ASD typically occurs in children 3 years old or later through the Autism Diagnostic Observation Schedule (ADOS) that identifies impairments in social interaction and communication, as well as restrictive and repetitive interests and behaviors [2, 3]. Having an older sibling with ASD increases the risk for ASD, especially if multiple older siblings are affected [4]. Research into genetic causes of ASD has been extensive and has identified multiple pathogenic mutations and copy number variants (CNV) [5, 6]. However, any single genetic cause makes up <1% of total ASD cases, and the majority of ASD cases appears to

be multifactorial, involving complex interactions between genetic and environmental risks and protective factors [7]. Epidemiological evidence suggests that periconception and in utero periods are the most vulnerable to environmental factors influencing ASD risk [8–12]. Since early identification and behavioral intervention in ASD has improved outcomes in individuals with ASD [13], an important goal is to develop molecular biomarkers that could predict increased ASD risk at birth.

Epigenetic marks such as DNA methylation are at the interface of genetic and environmental risk and protective factors in ASDs and therefore could make ideal biomarkers [14]. However, choice of a surrogate tissue is critical for epigenome-wide association studies since the brain is not accessible and blood DNA methylation patterns are influenced by variables such as cell type heterogeneity [15]. Also, blood cells have cell lineage differences from neurons that may impact the ability to

* Correspondence: jmlasalle@ucdavis.edu

¹Department of Medical Microbiology and Immunology, Genome Center, Davis, CA 95616, USA

⁶MIND Institute, University of California, Davis, CA 95616, USA

Full list of author information is available at the end of the article



detect methylation differences relevant to the brain. The placenta is a readily accessible tissue at birth that is normally discarded but could offer a unique epigenetic window into the interface of genetic and environmental factors that were present in utero.

The human placenta has a distinct methylation landscape found throughout all the three trimesters of pregnancy, characterized by large partially methylated domains (PMDs) interspersed with highly methylated domains (HMDs) [16]. PMDs are usually over 100 kb in length and cover tissue-specific, transcriptionally repressed genes [17]. Interestingly, neuronal development and synaptic transmission genes are statistically overrepresented in the placental PMDs, as are autism candidate genes [17]. The large-size and regionally defined methylation levels of PMDs make them amenable to analysis in low coverage ($\times 1-2$) whole genome bisulfite sequencing datasets [16, 18], which are much more affordable to generate for clinical samples than individual CpG resolution analysis at $\times 30$ coverage. Our prior study demonstrated that high versus low coverage placental MethylC-seq analyses show nearly identical global methylation patterns, with pairwise correlations of >0.95 [18].

Because hypomethylation in the placenta probably derives from the hypomethylated state of the early embryo and trophoblast, disturbances in the large-scale methylation patterns of the placenta could be indicative of methylation irregularities present in the embryo, which could later affect neuronal development in the fetus [18]. Placental inclusions, which are markers for genetic abnormalities and abnormal trophoblast inclusions, were previously observed in increased numbers in placental samples from participants in MARBLES (Markers of Autism Risk in Babies: Learning Early Signs), who are at high risk for developing autism compared to a general clinical population sample [19]. In this study, we performed whole genome methylome analyses on MARBLES placental samples to determine the utility of placental samples in identifying methylation markers indicative of ASD risk.

Methods

MARBLES study and sample selection

The placental tissues were obtained as previously described [19] from the MARBLES (Markers of Autism Risk in Babies: Learning Early Signs) study, a prospective study of the environmental, genetic, and epigenetic factors leading to autism spectrum disorder (ASD) (Hertz-Picciotto, in revision). Pregnant women and women planning a pregnancy were enrolled if they or the father already had a child with ASD; they were thus at significantly (13-fold) higher risk of having another child with ASD, as compared with parents not having a previous child with ASD [4]. MARBLES recruited Northern Californian families from lists of children receiving services for ASD funded

through the California Department of Developmental Services. Proband ASD status was confirmed, and the mothers were seen at regular intervals during pregnancy with biosample collection starting at enrollment and repeated at each visit. The placenta, cord blood, and other samples were collected and frozen at birth, and the children were followed to age 36 months when a final developmental diagnosis of autism or typical development was made by ADI-R in addition to the other assessments. DNA was isolated for MethylC-seq analysis from MARBLES placentas from births of 24 children who received a final 36-month clinical diagnosis of ASD by September 29, 2014 and 23 typically developing children matched to the children with ASD by gender and birth year (within 1.5 years), with preference given to those with greater availability of other study data. Due to the naturally occurring high proportion of males to females with autism, seen also in the MARBLES study, only two in each of the autism and typical placentas came from females (Additional file 1: Table S1). For non-MARBLES population control samples, full-term human placental samples were obtained from routine Cesarean sections, as described previously [16]. All participants gave written informed consent for data and sample use, and protocols were approved by UC Davis IRB (protocol # 225645-35).

Diagnostic classification

Children's development was assessed by trained and reliable examiners with final diagnostic assessments at 36 months. All children are assessed for autism symptoms using the gold standard Autism Diagnostic Observation Schedule-Generic (ADOS-G) [20, 21]. A clinical best estimate diagnosis was given through the consensus of two clinicians based on *DSM-IV* or *DSM-5* criteria. Placental samples were categorized based on whether the child met ADOS and *DSM* criteria for ASD, showed typical development, (TD), or had impairments in some domains, but did not meet the full ASD diagnostic criteria (ODC for Other Developmental Concerns).

MethylC-seq

The placental samples were frozen immediately after birth. DNA was extracted using Qiagen's Puregene kit, sonicated to ~ 300 bp, and methylated Illumina adapters were ligated to the ends using NEB's NEBNext DNA library prep kit. The library was bisulfite-converted using Zymo's EZ DNA Methylation-Lightning Kit, amplified for 14 cycles using PfuTurbo Cx, purified with Agencourt AMPure XP beads, and sequenced on an Illumina HiSeq 2000. Reads were mapped to the hg19 version of the human genome using BS Seeker [22]. To eliminate clonal PCR amplification duplicates, only one read out of those with identical genomic positions was kept; Genome and CpG coverage was estimated by multiplying the number and the length of the

mapped reads and dividing by the size of the human genome (Additional file 1: Table S1). CpG site methylation data were combined from both DNA strands.

Defining PMD/HMDs

Methylation data from 17 typical placentas from MARBLES were combined to create a single, high-coverage map of methylation across the genome. Visually annotated PMD and HMD portions of this consensus genome were used to train a two-state hidden Markov model (HMM) to differentiate PMDs and HMDs using an HMM called hidden Markov models of methylation (StochHMM) [23], as previously described [16]. The model was then applied to the same high-coverage methylation data to define the boundaries of PMD/HMDs in the typical placentas. Those boundary chromosome coordinates were used for calculating average percent methylation in both typical and autism placental samples in the MARBLES study. For each sample, the average % methylation over all PMDs and all HMDs was calculated. In addition, % methylation for each PMD and HMD for each individual was calculated, and differences between ASD and TD samples were assessed for significance using two-tailed *t* tests and false discovery rate (FDR) multiple hypothesis correction (0.05).

Determination of maternal blood contamination by X chromosome methylation

Since the majority of fetal samples were male that only contains a single active X chromosome, we used DNA methylation values from specific regions of the X chromosome that are specifically methylated in females due to X chromosome inactivation on the second X chromosome. All CpG islands within HMDs on the X chromosome were selected, and the mean percent methylation was determined. Since a sample containing no female cells would theoretically be expected to have lower methylation over these regions, the percentage of female cells in each sample was estimated and compared between samples for potential differences.

Methylation pyrosequencing

Samples were taken from six different locations in ten full-term control placentas (non-MARBLES samples and primers described previously [16]). Genomic DNA was isolated and bisulfite-converted as above, PCR-amplified for 45 cycles using HotStarTaq polymerase (PyroMark PCR Kit, Qiagen), and run on a PyroMark Q24. Primer sequences for the *DLL1* locus were from hg19 chr6:170,534,692-170,534,733 spanning three CpG sites:

```
DLL_enh_BS_F1:TTGGGTTTAGTTGGGGATAGGG
DLL_enh_BS_R1:AACCCAAAACTTCCCTCTC
DLL_enh_BS_S1:TTTATTTGTTTGTATAG
TTTGAG
```

Statistical analyses for associations between methylation and sequencing and demographic factors

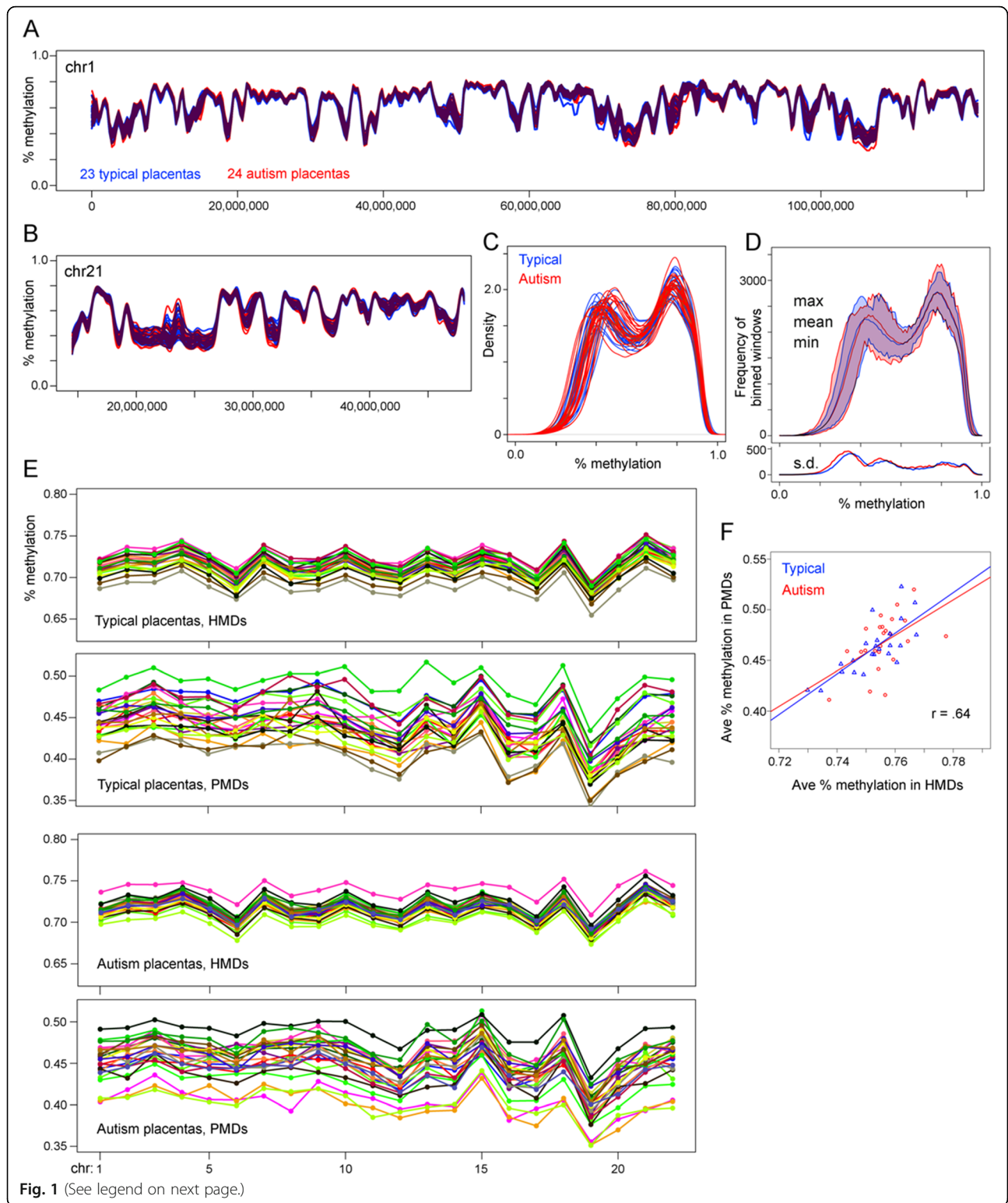
Information on demographic factors were collected through telephone-assisted interviews. The following variables were analyzed for associations with PMD total average methylation, HMD total average methylation, and the percent of the 20 kb windows with methylation below 60%: sequencing run, order, and coverage; child race (white non-Hispanic [reference], Asian, multi-racial, white Hispanic, non-white Hispanic); and child sex (male [reference]/female).

We performed univariate linear regression using the SAS software version 9.4 for each variable in relation to PMD methylation, PMD methylation adjusted for HMD methylation, HMD methylation, HMD methylation adjusted for PMD methylation, and the percent of the 20 kb windows with methylation below 60% (using a 5% change as the unit) (Additional file 1: Table S6). To facilitate interpretation of regression coefficients, PMD and HMD methylation was expressed in 5 percentage point and 2 percentage point units, respectively, so that coefficients (and effect size estimates based on them) correspond to an approximately 2 SD change in the independent variable. To account for the multiplicity of hypotheses being assessed, we controlled the FDR at 5% [24]. In ad hoc analyses, we examined demographic factors in relation to *DLL1* methylation (unit was 5% change). We used the Akaike information criterion (AIC) to select the most parsimonious among the candidate models [25, 26]. To produce a final model, we used sandwich estimators to produce homoscedasticity-robust estimates of the 95% confidence interval given that the conditional variance of outcomes appeared to vary with the regression-based predicted values.

Results

Human placentas have highly reproducible PMD/HMD patterns with higher variability over PMDs than HMDs

MethylC-seq analysis of 24 ASD and 23 TD placental samples showed that global genome-wide methylation patterns were very similar between individuals, with methylation variability between samples being larger within the PMDs than HMDs (Fig. 1a, b, Additional file 1: Table S1). In particular, there seemed to be a little deviation in the locations of PMD/HMDs and their boundaries. When graphing average methylation in 20 kb windows across the genome, PMD/HMDs show up as a bimodal distribution in the human placenta [16]. Similar bimodal curves were seen in all typical and autism MARBLES placentas (Fig. 1c, d, Additional file 2: Figure S1). Greater inter-individual variability was observed in PMDs as a higher standard deviation over the peaks with lower methylation (Fig. 1d).



(See figure on previous page.)

Fig. 1 Genome-wide methylation landscape of MARBLES typical and autism placentas. **a–d** Average methylation in non-overlapping 20 kb windows tiled across the autosomes. CpG islands were not removed. **a** Methylation across the p arm of chromosome 1 and **b** the q arm of chromosome 21. Curves were smoothed with a first order local polynomial. Overlap between autism and typical is shown in *maroon*. **c** Distribution of average window methylation across all autosomes with kernel density smoothing. **d** Because of high curve overlap in **c**, the average window methylation was binned at 1% methylation increments for each sample, and the minimum, mean, maximum, and standard deviation were plotted for both typical and autism placentas. No additional smoothing was done. **e** Average methylation of CpG sites in PMDs/HMDs on each individual autosome. PMD/HMD boundaries were determined using a hidden Markov model on a combined set of 17 typical placentas. Each individual placenta has the same color in the HMD and PMD graphs. **f** Correlation between genome-wide methylation levels in PMDs and HMDs for each placenta. Least squares regression lines are shown for the typical and autism placentas. The Pearson correlation for all samples combined is 0.64

Since there is some difference in methylation between individuals, particularly in PMDs, we next asked if higher versus lower average methylation for a given individual (relative to the group) is consistent across chromosomes or different between chromosomal loci. In Fig. 1a, b, individual samples appeared follow a similar pattern across each chromosome, and that pattern was also observed for each sample graphed by average methylation for each chromosome for each individual (Fig. 1e). Individuals with higher or lower methylation in HMDs on one chromosome also tended to have similar higher or lower methylation in HMDs on the other chromosomes. Genome-wide methylation levels in HMDs varied by as much as 4.76% between individuals. For PMDs, the same trend of consistently higher or lower methylation across chromosomes was still observed, but there was a more random mixing of relative methylation levels in PMDs compared to HMDs. Genome-wide methylation levels in PMDs varied by as much as 11.17% between individuals. These genomic individual differences in methylation levels between individuals were observed in both autism and typical placental samples, with negligible differences between diagnostic groups.

Note that in Fig. 1e, a typical placenta was given the same color in both the PMD and HMD graphs (likewise for the autism placentas). Since individuals with relatively high or low methylation in HMDs did not necessarily have the same relatively high or low methylation in PMDs, we next asked how well genome-wide average methylation levels in PMDs and HMDs correlated. For both typical placentas and autism placentas, there are significant positive correlations between methylation levels in PMDs and HMDs, with a combined correlation of 0.64 (Fig. 1f).

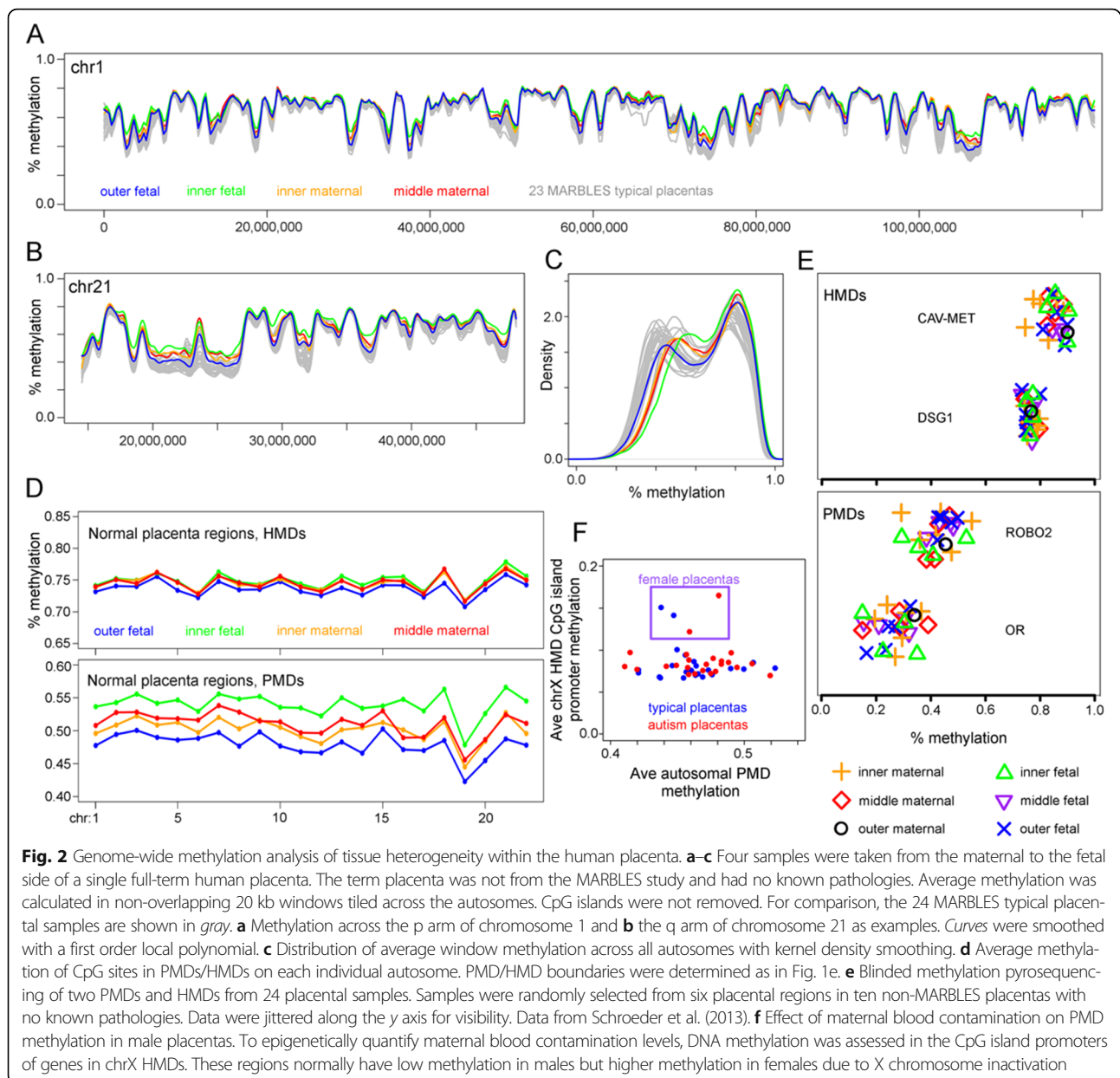
Intra-tissue DNA methylation variability mirrors inter-individual variability

Although PMD/HMD patterns were consistent between individual placentas, we next asked how much of the variability in the relative level of methylation between individuals could be due to tissue sampling heterogeneity. More specifically, are methylation levels or patterns different on the maternal versus fetal sides or between the

different regions within the placenta? To answer this question, we sampled the outer fetal, inner fetal, inner maternal, and middle maternal portions of a single normal placenta that was not part of the MARBLES study. Figure 2a–d shows that the variability in relative methylation levels between regions within a single placenta are similar to the inter-individual variability seen in typical MARBLES placentas. Specifically, the ~10% range of methylation values for PMD intra-tissue variability shown in Fig. 2d is no greater than the PMD inter-individual variability shown in Fig. 1e.

To examine whether placental sampling location was predictive of methylation level, pyrosequencing analysis was performed over four genomic loci, representing 2 HMD and 2 PMD loci described previously [16]. Samples were from ten normal placentas that were not part of the MARBLES study, and each placenta was sampled from one to five of the six placental regions (Fig. 2e). Samples from the same placental region but different placentas did not co-cluster but appeared fairly randomly distributed relative to the other samples. At all four loci, two-way ANOVA tests showed neither statistically significant effects of individual placenta nor placental location on percent methylation over these loci.

We next asked whether the inter-individual variability in methylation observed in PMDs could be attributed to differences in levels of maternal blood contamination. Because global methylation levels in the blood are typically high, similar to other adult somatic tissues, the amount of blood in the placental sample would proportionally raise the amount of observed methylation in PMDs. To address this in the MARBLES placentas, we utilized the epigenetic feature that females have higher methylation in CpG island promoters on the inactive X chromosome [27]. We reasoned that if maternal cells were contributing to placental methylation levels, higher levels of maternal cells in the placentas of male offspring would correspond to increased methylation in X chromosome CpG island promoters. Figure 2f, however, shows that there is no correlation between autosomal PMD methylation and X chromosome CpG island promoter methylation. However, four of the MARBLES samples were from female offspring (marked with a purple box), and increased methylation is observed in their



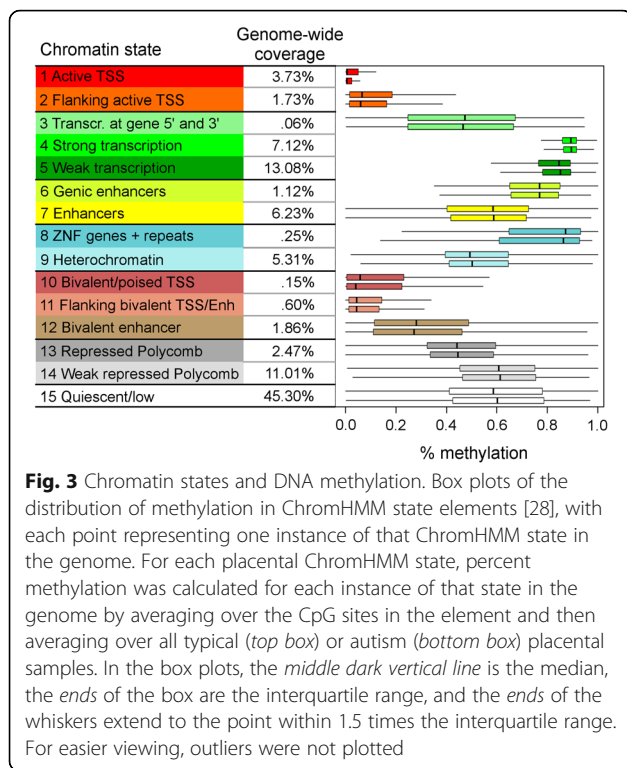
X chromosome CpG island promoters, as would be expected from a female genome.

Methylation differences between typical and autism placentas

In order to determine if DNA methylation in placenta could be used as a biomarker for early autism detection, we first performed linear regression tests on both global average HMD methylation and global average PMD methylation, looking at the effects not only of child diagnosis (autism or typical) but also sex, the sequencing run number, the order of sequencing (since Illumina sequencing chemistries changed during the course of the study), and the average sequencing coverage. None of the factors,

including diagnosis, had statistically significant effects on either average HMD or PMD methylation (data in Additional file 1: Table S2). In addition, no significant difference in percent methylation between ASD and TD samples was observed over any chromosome (data in Additional file 1: Table S3). Average methylation in individual promoters, CpG islands, gene bodies, and non-overlapping 20 kb windows were also tested as above, but no statistically significant differences between ASD and TD samples were found after FDR correction.

To determine if there were methylation differences within chromatin states, hidden Markov models of chromatin states (ChromHMM) mappings for the human placenta were investigated [28]. Figure 3 shows the average



methylation, across autism/typical placental samples, for each chromatin state. This shows, for example, not only the average methylation for heterochromatin but also the range of methylation found for individual heterochromatin elements. Within the human placenta, both active and poised transcription start sites (TSSs) show low methylation; however, active TSSs show the lowest methylation levels. Transcribed regions show the highest methylation and heterochromatin, Polycomb-regulated, quiescent, and many enhancer regions show partial methylation. In order to determine if ASD and typical placentas differed in their global levels of methylation in any of the chromatin states, average genome-wide methylation for each chromatin state was calculated for each MARBLES placental sample. Two-tailed *t* tests showed no statistically significant differences between ASD and TD samples for any of the ChromHMM states after FDR correction (Additional file 1: Table S4).

We next tested average methylation in individual PMDs and HMDs using two-tailed *t* tests and FDR multiple hypothesis correction (0.05). No PMDs showed statistically significant differences between autism and typical placental sample; however, one HMD showed significance with a *p* value of 0.0267 (Additional file 2: Figure S2). It is located on chromosome 6, 45 kb downstream from the *DLL1* gene and 16 kb downstream of the *LOC15444* non-coding RNA. This differentially methylated HMD includes a region with the enhancer marks H3K4me1 and H3K27ac in the fetal brain (Fig. 4a). Evidence for three-dimensional interaction between this putative enhancer and the *DLL1* promoter is

provided by visualization of this locus in published HiC data (Fig. 4b) [29]. A pyrosequencing analysis of bisulfite-converted DNA using primers designed to the enhancer region validated significantly increased DNA methylation in ASD compared to TD samples (Fig. 4c). In contrast, samples from the “other developmental concerns” (ODC) group in MARBLES with behavioral features that did not fall into either TD or ASD categories showed intermediate methylation levels at this *DLL1* locus (Fig. 4d, Additional file 1: Table S5). Similar to the other specific loci shown in Fig. 2e, methylation analysis of the *DLL1* locus by pyrosequencing did not reveal detectable differences based on location of the placental sample (Fig. 4e).

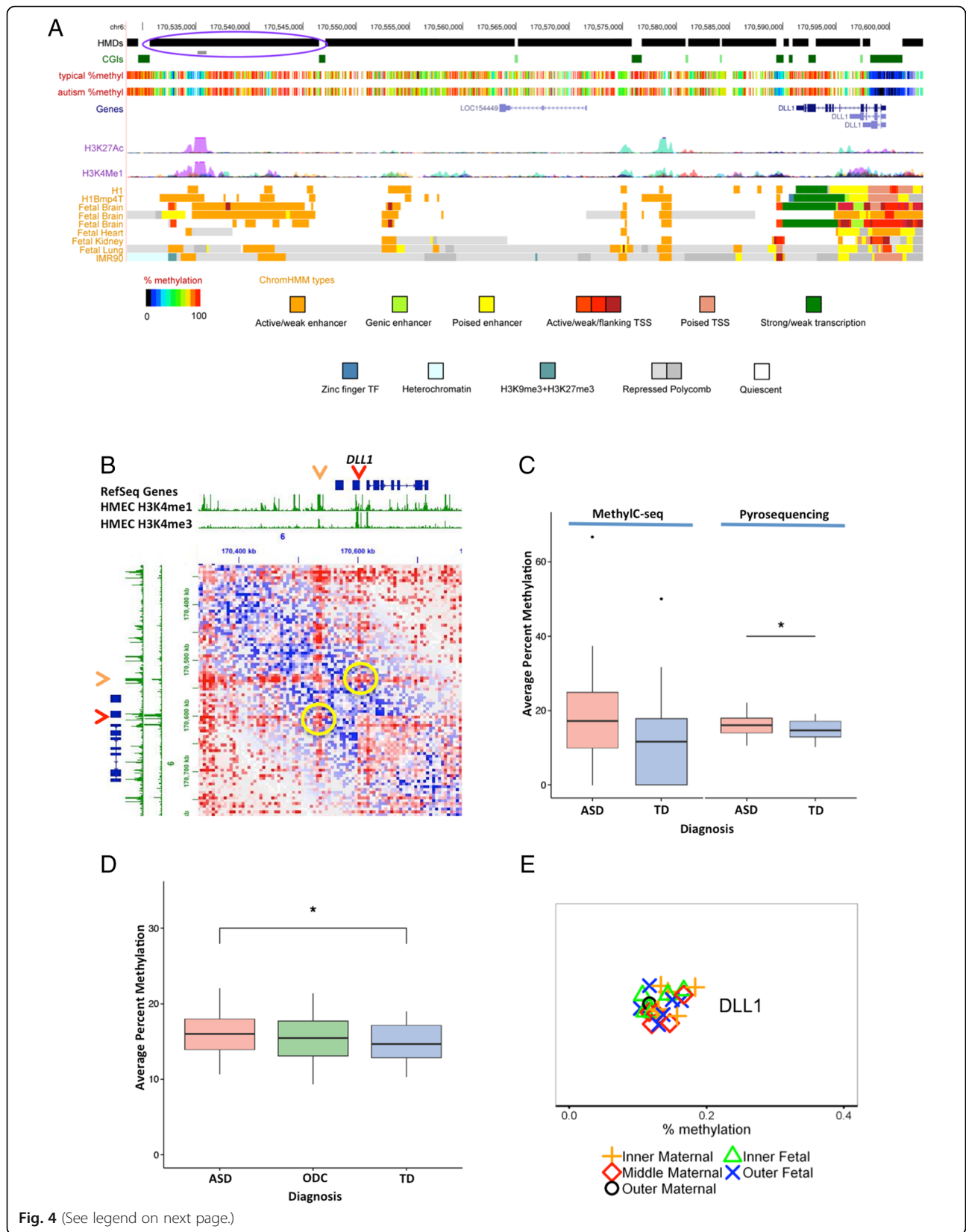
Influence of sequencing and demographic factors

Sequencing run, order, and coverage and child race/ethnicity and sex were evaluated as predictors of average PMD and HMD values, as well as the percentage of 20 kb windows less than 60% methylation, in univariate linear regression analysis. None of these factors was a significant predictor of methylation though child race/ethnicity showed a trend toward an association with PMD methylation prior to FDR correction (Additional file 1: Table S6). Sequencing and demographic variables were not independently significantly associated with *DLL1* locus methylation, and the most parsimonious model selected by AIC included only ASD status, which was associated with higher average *DLL1* methylation (estimate = 0.24, 95% CI -0.04, 0.51, *p* = 0.09).

Discussion

Identifying methylation signatures of risk for neurodevelopmental disorders such as ASD in placenta is a challenging goal that we sought to address with an initial study on the feasibility of using MethylC-seq in placental samples from a prospective ASD study. Despite the inherent limitations in the study design (low coverage of individual CpG sites, small sample size, sampling heterogeneity), several novel findings were obtained by this approach.

First, MethylC-seq and PMD/HMD analyses were successfully used to identify a novel differentially methylated region between ASD and TD placentas corresponding to an apparent fetal brain enhancer near the *DLL1* locus. Differential methylation at this locus was not explained by differences in sequencing or demographic factors between ASD and TD placentas. *DLL1* encodes the *Delta*-like1 ligand of Notch receptors that mediates lateral inhibition of neighboring cells in embryonic development through Hes1 transcriptional feedback. In mouse embryonic brain, *Dll1* and Hes1 proteins show reciprocal oscillations in neural precursor cells [30], and *Dll1* oscillations are predicted to act to control proliferation versus differentiation of neurons [31], a developmental period of importance to ASD [32, 33]. Furthermore, loss-of-function mutations have



(See figure on previous page.)

Fig. 4 Epigenetic characteristics of differentially methylated region over a predicted enhancer near the *DLL1* gene and validation by pyrosequencing. **a** UCSC Genome Browser screenshot showing the differentially methylated HMD region (circled in blue-purple). Methylation data for the 23 typical MARBLES placentas and 24 autism MARBLES placentas were combined to produce composite methylation tracks with each vertical bar showing percent methylation at individual CpG sites. H3K27ac and H3K4me1 tracks are from ENCODE. ChromHMM tracks are from the Roadmap Epigenomics Consortium [28]. HMD highly methylated domain, CGI CpG island, *H1Bmp4T* H1 human embryonic stem cells differentiated into trophoblasts, *IMR90* human fetal lung fibroblasts, TSS transcription start site, TF transcription factor. **b** Long-range interactions in the *DLL1* locus revealed by “Juicebox” visualization tool of human HUMEC HiC data (HUMEC in situ combined, observed, red; expected, blue) [29]. Red arrow designates *DLL1* promoter; orange arrow, putative *DLL1* enhancer; yellow circles highlight evidence for observed 3D interactions over expected for these two loci. **c** Three CpG sites corresponding to the H3K27ac/H3K4me1 peaks were assayed by pyrosequencing on the same samples analyzed by MethylC-seq (region shown by gray bar in **a** within circled HMD). Average MethylC-seq % methylation for the three CpG sites is plotted compared to the pyrosequencing values. ASD and TD pyrosequencing values from three replicates per sample were tested for significance by *t* test. * $p < 0.05$. **d** An “Other Developmental Concerns” (ODC) group that was neither TD nor ASD was compared to TD and ASD by pyrosequencing as in **c**. No significant differences were observed between ODC and ASD or ODC and TD, although the values were between the two groups, as expected. $N = 24$ ASD, 23 TD, 23 ODC. **e** *DLL1* pyrosequencing analysis of methylation levels by placental region. Results shown are from six different control placentas and samples obtained from five different regions as labeled

been observed in *DLL1* in human ASD, as well as other members of Notch signal transduction [34]. While this locus has the histone marks and chromatin organization associated with being a strong fetal brain enhancer, future analyses in animal models would be needed to determine the functional relevance of methylation at this epigenomically defined enhancer to *DLL1* expression in the embryonic brain.

A sex hormone imbalance during pregnancy has been implicated to explain the male bias of ASD [35]. In rodents, inhibition of DNA methyltransferases in the sexually dimorphic preoptic brain region resulted in masculinized reproductive behaviors [36]. Furthermore, in human prostate cells, dynamic changes in DNA methylation at regulatory regions corresponded with transcriptional changes in response to androgen treatment [37]. Since Notch signaling and *Dll1* expression are responsive to progesterone in mouse models [38, 39], and human pregnancies resulting in ASD diagnosis showed increased fetal steroidogenic activities from amniotic samples [40], perhaps the higher methylation levels for the putative *DLL1* enhancer observed in ASD versus TD in our study reflect fetal steroidogenic alterations. Future human studies could attempt to detect steroid protein levels in relation to DNA methylation in stored frozen placental samples [41] from high-risk ASD cohorts.

Interestingly, this putative *DLL1* enhancer locus was not represented on the Illumina Infinium 450 k array platform, so prior ASD studies of differential methylation in the brain [42, 43] or in surrogate tissues [44, 45] would not have been able to detect it. Since the current cost for MethylC-seq at the coverage we performed in this study is becoming closer to that of array-based technologies, our approach represents an alternative method with increased genomic coverage for finding epigenetic biomarkers. While transcriptome differences are often used for biomarker discovery, RNA quality is notoriously poor due to nuclease activity of placenta, and the term placenta may not be ideal for uncovering gene

expression differences that occurred earlier in gestation. Due to the low coverage of individual CpGs inherent in our approach, however, some relevant methylation differences may have been missed, but this limitation is expected to improve in future studies using whole genome methylation sequencing. Another limitation in our study was the small sample size of currently available placental samples with ASD diagnoses, which may decrease the sensitivity to detect methylation differences in the *DLL1* locus that were due to ASD as opposed to other confounding factors. Small effect sizes for methylation differences are a common finding in children’s studies, but combining multiple putative methylation biomarkers could increase sensitivity of these assays [46]. Prior methylation studies in ASD have identified oxytocin receptor (*OXTR*), Engrailed 2 (*EN2*), and methyl CpG binding protein 2 (*MECP2*) with the largest effect sizes in the brain or blood [14, 47–52]. With additional power from increased sample size in future studies, these and other ASD candidate epigenetic biomarkers may be confirmed or identified in placenta.

In addition, we investigated sources of inter-individual variability in methylation patterns in human placental samples independent of ASD diagnosis. While PMDs are the most interesting epigenetic feature of the placental methylome, these regions are also the most variable between individuals, a potential confounding factor in the search for disease or exposure relevant biomarkers within PMDs. Interestingly, the inter-individual methylation levels appeared to be genome-wide rather than locus-specific, with individual samples showing relatively higher or lower methylation over both PMDs and HMDs. One explanation for variability over PMDs was heterogeneity in sampling location, likely due to the different mixture of cell types represented in different placental regions. At individual PMD loci measured by pyrosequencing, however, sampling location did not apparently account for significant differences. Maternal blood contamination was determined to be less than 10% of cells by methylation analysis

of promoters on the X chromosome in male samples, and degree of X-linked methylation did not correlate with average methylation over PMDs, suggesting that this is not a likely source of inter-individual variation in methylation levels over PMDs.

Placental tissue contains a heterogeneous mixture of different cell types, including trophoblasts (cytotrophoblasts and syncytiotrophoblasts), mesenchymal stromal cells (fibroblasts and mesenchymal-derived macrophages), fetal vascular cells (smooth muscle cells, pericytes, endothelial cells), and fetal hematopoietic cells (extravascular fetal red blood cells, hematopoietic stem cells) [53, 54]. Therefore, different ratios of these mixed populations of cell types between individual placental samples could be a source of the inter-individual variation observed over PMDs or possible intra-tissue variability not detectable in our analyses. However, a prior comparison between isolated trophoblast cells and the whole placenta in rhesus macaque showed strong correlation between their methylation levels (0.89), suggesting that cell type methylation differences in the placenta may be lower than would be expected [18]. In the cord blood samples, fetal nucleated red blood cells (nRBCs) are hypomethylated relative to other blood cell types, and variable numbers of these nucleated RBCs can affect methylation levels [55]. The possibility that differences in fetal nRBCs could explain inter-individual variation over placental PMDs may be investigated in future studies through cell sorting and data normalization approaches described for cord blood [56].

Conclusions

In conclusion, whole genome bisulfite sequencing analyses of human placental samples are expected to be useful in the future for the detection of disease methylation biomarkers in prospective studies of ASD with increased sample size.

Additional files

Additional file 1: Tables S1-S6. Table S1. MethylC-seq sequencing statistics. **Table S2.** Average methylation over all PMDs and HMDs in placental samples. **Table S3.** Average DNA methylation for all chromosomes in placental samples. Table also shows average methylation over all autosomes, which is the average methylation over all CpG sites in the autosomes, not just the average over the chromosome-wide averages. **Table S4.** Average autosomal DNA methylation for ChromHMM states in placental samples. For each ChromHMM state and each placental sample, average methylation was calculated for all autosomal CpG sites in elements of that state. **Table S5.** Pyrosequencing analysis at the *DLL1* locus. Percent methylation for each of the 3 CpG sites (P1, P2, P3) was determined by pyrosequencing for each ASD, TD, and ODC placental sample. **Table S6.** Demographic and environmental factors in relation to placental methylation. Statistical analyses of potential covariates including, run, order, coverage, ethnicity, and sex with methylation of PMD, HMD, % 20 kb windows <60% methylation, and *DLL1* locus. (XLSX 51 kb)

Additional file 2: Figures S1-S3. Figure 1. Histograms of average methylation in 20 kb windows for each placental sample. Individual histograms (no smoothing) for each MARBLES typical and autism placentas as well as three biological replicates of "normal" non-MARBLES placentas which have no known pathologies [16]. Methylation data was omitted if a window had fewer than 20 covered CpG sites. Red vertical lines show the arbitrary 60% methylation cutoff between windows with low and high methylation. Percentage of 20 kb windows with average methylation below 60% also shown in red (excluding omitted windows). n = number of windows with required CpG coverage, m = number of windows omitted due to insufficient coverage. **Figure S2.** Plots showing location and statistical significance of differential methylation in HMDs and PMDs. Each point shows the FDR-corrected probability of that HMD/PMD being differentially methylated between autism and typical MARBLES placentas. Chromosomes are alternately colored red and black for clarity. The blue line shows the 0.05 cutoff for statistical significance. **Figure S3.** *DLL1* Pyrosequencing results by individual CpG position. Three CpG sites corresponding to the H3K27ac/H3K4me1 peaks were assayed by pyrosequencing on the same samples analyzed by MethylC-seq (region shown by gray bar in Fig. 4a within circled HMD). (PDF 3999 kb)

Abbreviations

ADOS: Autism Diagnostic Observation Schedule; ASD: Autism spectrum disorder; ChromHMM: Hidden Markov models of chromatin states; CNV: Copy number variation; FDR: False discovery rate; HMD: Highly methylated domain; MARBLES: Markers of Autism Risk in Babies, Learning Early Signs; MethylC-seq: Whole genome bisulfite sequencing; PMD: Partially methylated domain; StochHMM: Hidden Markov models of methylation; TD: Typically developing

Acknowledgements

We would like to thank Charles Mordaunt and Yihui Zhu for the technical assistance, members of the LaSalle lab and UCD Children's Center for Environmental Health for the helpful discussions, and the MARBLES study participants.

Funding

This work was supported by DOD AR110194, NIH R01ES021707, NIH R01ES025574, NIH P01ES011269 (CCEH), EPA 83543201 (CCEH), R01ES020392 (MARBLES), U54HD079125 (IDDR), and NIH-UL1-TR000002 (CTSC). This work used the Vincent J. Coates Genomics Sequencing Laboratory at UC, Berkeley, supported by NIH S10 Instrumentation Grants S10RR029668 and S10RR027303.

Availability of data and materials

Sequencing data are available NDAR #362 for those participants who consented to data release.

Authors' contributions

JML conceived the study. DIS, RJS, CKW, IHP, and JML designed the study. DIS and FKJ acquired the data. DIS, RJS, FKJ, and JML analyzed the data. DJT provided statistical analyses expertise and input. RJS, CKW, DJT, SO, and IHP contributed placental tissue, data, critical expertise or analysis tools. DIS, RJS, and JML wrote the manuscript. All authors read and approved the final manuscript.

Competing interests

The authors declare that they have no competing interests.

Consent for publication

Not applicable.

Ethics approval and consent to participate

This study was reviewed and approved by the UC Davis Institutional review Board, #225645-35. Consent was obtained from all participants for use of placental samples in research. A subset of participants also consented for release of data from this study in the National Database for Autism Research (NDAR).

Author details

¹Department of Medical Microbiology and Immunology, Genome Center, Davis, CA 95616, USA. ²Department of Public Health Sciences, University of California, Davis, CA 95616, USA. ³Department of Obstetrics and Gynecology,

University of California, Davis, CA 95616, USA. ⁴Department of Psychiatry and Behavioral Sciences, University of California, Davis, CA 95616, USA.

⁵Department of Pediatrics, University of California, Davis, CA 95616, USA.

⁶MIND Institute, University of California, Davis, CA 95616, USA.

Received: 7 October 2016 Accepted: 28 November 2016

Published online: 15 December 2016

References

- Center for Disease Control and Prevention. Prevalence and characteristics of autism spectrum disorder among children aged 8 years — Autism and Developmental Disabilities Monitoring Network, 11 Sites, United States, 2012. *MMWR Surveill Summ*. 2016;65:1-23.
- Messinger D, Young GS, Ozonoff S, Dobkins K, Carter A, Zwaigenbaum L, Landa RJ, Charman T, Stone WL, Constantino JN, et al. Beyond autism: a baby siblings research consortium study of high-risk children at three years of age. *J Am Acad Child Adolesc Psychiatry*. 2013;52(3):300–8. e301.
- Chawarska K, Shic F, Macari S, Campbell DJ, Brian J, Landa R, Hutman T, Nelson CA, Ozonoff S, Tager-Flusberg H, et al. 18-month predictors of later outcomes in younger siblings of children with autism spectrum disorder: a baby siblings research consortium study. *J Am Acad Child Adolesc Psychiatry*. 2014;53(12):1317–27. e1311.
- Ozonoff S, Young GS, Carter A, Messinger D, Yirmiya N, Zwaigenbaum L, Bryson S, Carver LJ, Constantino JN, Dobkins K, et al. Recurrence risk for autism spectrum disorders: a baby siblings research consortium study. *Pediatrics*. 2011;128(3):e488–95.
- Bourgeron T. From the genetic architecture to synaptic plasticity in autism spectrum disorder. *Nat Rev Neurosci*. 2015;16(9):551–63.
- Geschwind DH, State MW. Gene hunting in autism spectrum disorder: on the path to precision medicine. *Lancet Neurol*. 2015;14(11):1109–20.
- LaSalle JM. Epigenomic strategies at the interface of genetic and environmental risk factors for autism. *J Hum Genet*. 2013;58(7):396–401.
- Hellerstedt WL, McGovern PM, Fontaine P, Oberg CN, Cordes JE. Prenatal environmental exposures and child health: Minnesota's role in the National Children's Study. *Minn Med*. 2008;91(9):40–3.
- Brown AS. Epidemiologic studies of exposure to prenatal infection and risk of schizophrenia and autism. *Dev Neurobiol*. 2012;72(10):1272–6.
- Roberts AL, Lyall K, Hart JE, Laden F, Just AC, Bobb JF, Koenen KC, Ascherio A, Weisskopf MG. Perinatal air pollutant exposures and autism spectrum disorder in the children of nurses' health study II participants. *Environ Health Perspect*. 2013;121(8):978–84.
- Schmidt RJ, Tancredi DJ, Ozonoff S, Hansen RL, Hartiala J, Allayee H, Schmidt LC, Tassone F, Hertz-Picciotto I. Maternal periconceptual folic acid intake and risk of autism spectrum disorders and developmental delay in the CHARGE (Childhood Autism Risks from Genetics and Environment) case-control study. *Am J Clin Nutr*. 2012;96(1):80–9.
- Schmidt RJ. Maternal folic acid supplements associated with reduced autism risk in the child. *Evid Based Med*. 2013;18(6):e53.
- Estes A, Munson J, Rogers SJ, Greenon J, Winter J, Dawson G. Long-term outcomes of early intervention in 6-year-old children with autism spectrum disorder. *J Am Acad Child Adolesc Psychiatry*. 2015;54(7):580–7.
- Loke YJ, Hannan AJ, Craig JM. The role of epigenetic change in autism spectrum disorders. *Front Neurol*. 2015;6:107.
- Flanagan JM. Epigenome-wide association studies (EWAS): past, present, and future. *Methods Mol Biol*. 2015;1238:51–63.
- Schroeder DJ, Blair JD, Lott P, Yu HO, Hong D, Cray F, Ashwood P, Walker C, Korf I, Robinson WP, et al. The human placenta methylome. *Proc Natl Acad Sci U S A*. 2013;110(15):6037–42.
- Schroeder DJ, Lott P, Korf I, LaSalle JM. Large-scale methylation domains mark a functional subset of neuronally expressed genes. *Genome Res*. 2011;21(10):1583–91.
- Schroeder DJ, Jayashankar K, Douglas KC, Thirkill TL, York D, Dickinson PJ, Williams LE, Samollow PB, Ross PJ, Bannasch DL, et al. Early developmental and evolutionary origins of gene body DNA methylation patterns in mammalian placentas. *PLoS Genet*. 2015;11(8):e1005442.
- Walker CK, Anderson KW, Milano KM, Ye S, Tancredi DJ, Pessah IN, Hertz-Picciotto I, Kliman HJ. Trophoblast inclusions are significantly increased in the placentas of children in families at risk for autism. *Biol Psychiatry*. 2013;74(3):204–11.
- Lord C, Risi S, Lambrecht L, Cook Jr EH, Leventhal BL, DiLavore PC, Pickles A, Rutter M. The autism diagnostic observation schedule-generic: a standard measure of social and communication deficits associated with the spectrum of autism. *J Autism Dev Disord*. 2000;30(3):205–23.
- Lord C, Rutter M, DiLavore PC, Risi S. The Autism Diagnostic Observation Schedule (ADOS). Los Angeles: Western Psychological Services; 2000.
- Chen PY, Cokus SJ, Pellegrini M. BS Seeker: precise mapping for bisulfite sequencing. *BMC Bioinformatics*. 2010;11:203.
- Lott PC, Korf I. StochHMM: a flexible hidden Markov model tool and C++ library. *Bioinformatics*. 2014;30(11):1625–6.
- Benjamini Y, Hochberg Y. Controlling the false discovery rate: a practical and powerful approach to multiple testing. *J R Stat Soc Series B Stat Methodol*. 1995;57(1):289–300.
- Bozdogan H. Model selection and Akaike's Information Criterion (AIC): the general theory and its analytical extensions. *Psychometrika*. 1987;52(3):345–70.
- Akaike H. Information theory and an extension of the maximum likelihood principle. In: Csaki BNPBF, editor. Second international symposium on information theory. Budapest: Akademiai Kiado; 1973.
- Cotton AM, Avila L, Penaherrera MS, Affleck JG, Robinson WP, Brown CJ. Inactive X chromosome-specific reduction in placental DNA methylation. *Hum Mol Genet*. 2009;18(19):3544–52.
- Kundaje A, Meuleman W, Ernst J, Bilenky M, Yen A, Heravi-Moussavi A, Kheradpour P, Zhang Z, Wang J, Ziller MJ, et al. Integrative analysis of 111 reference human epigenomes. *Nature*. 2015;518(7539):317–30.
- Rao SS, Huntley MH, Durand NC, Stamenova EK, Bochkov ID, Robinson JT, Sanborn AL, Machol I, Omer AD, Lander ES, et al. A 3D map of the human genome at kilobase resolution reveals principles of chromatin looping. *Cell*. 2014;159(7):1665–80.
- Shimojo H, Ohtsuka T, Kageyama R. Oscillations in notch signaling regulate maintenance of neural progenitors. *Neuron*. 2008;58(1):52–64.
- Shimojo H, Isomura A, Ohtsuka T, Kori H, Miyachi H, Kageyama R. Oscillatory control of Delta-like1 in cell interactions regulates dynamic gene expression and tissue morphogenesis. *Genes Dev*. 2016;30(1):102–16.
- Amiri A, Cho W, Zhou J, Birnbaum SG, Sinton CM, McKay RM, Parada LF. Pten deletion in adult hippocampal neural stem/progenitor cells causes cellular abnormalities and alters neurogenesis. *J Neurosci*. 2012;32(17):5880–90.
- Chen J, Alberts I, Li X. Dysregulation of the IGF-1/PI3K/AKT/mTOR signaling pathway in autism spectrum disorders. *Int J Dev Neurosci*. 2014;35:35–41.
- Hormozdiazari F, Penn O, Borenstein E, Eichler EE. The discovery of integrated gene networks for autism and related disorders. *Genome Res*. 2015;25(1):142–54.
- Baron-Cohen S, Lombardo MV, Auyeung B, Ashwin E, Chakrabarti B, Knickmeyer R. Why are autism spectrum conditions more prevalent in males? *PLoS Biol*. 2011;9(6):e1001081.
- Nugent BM, Wright CL, Shetty AC, Hodes GE, Lenz KM, Mahurkar A, Russo SJ, Devine SE, McCarthy MM. Brain feminization requires active repression of masculinization via DNA methylation. *Nat Neurosci*. 2015;18(5):690–7.
- Dhiman VK, Attwood K, Campbell MJ, Smiraglia DJ. Hormone stimulation of androgen receptor mediates dynamic changes in DNA methylation patterns at regulatory elements. *Oncotarget*. 2015;6(40):42575–89.
- Otti GR, Saleh L, Velicky P, Fiala C, Pollheimer J, Knofler M. Notch2 controls prolactin and insulin-like growth factor binding protein-1 expression in decidualizing human stromal cells of early pregnancy. *PLoS ONE*. 2014;9(11):e112723.
- Murta D, Batista M, Trindade A, Silva E, Mateus L, Duarte A, Lopes-da-Costa L. Dynamics of Notch signalling in the mouse oviduct and uterus during the oestrous cycle. *Reprod Fertil Dev*. 2015;28(11):1663–78. doi:10.1071/RD15029.
- Baron-Cohen S, Auyeung B, Norgaard-Pedersen B, Hougaard DM, Abdallah MW, Melgaard L, Cohen AS, Chakrabarti B, Ruta L, Lombardo MV. Elevated fetal steroidogenic activity in autism. *Mol Psychiatry*. 2015;20(3):369–76.
- Huuskonen P, Amezaga MR, Bellingham M, Jones LH, Storvik M, Hakkinen M, Keski-Nisula L, Heinonen S, O'Shaughnessy PJ, Fowler PA, et al. The human placental proteome is affected by maternal smoking. *Reprod Toxicol*. 2016;63:22–31.
- Ladd-Acosta C, Hansen KD, Briem E, Fallin MD, Kaufmann WE, Feinberg AP. Common DNA methylation alterations in multiple brain regions in autism. *Mol Psychiatry*. 2014;19(8):862–71.
- Nardone S, Sams DS, Reuveni E, Getselter D, Oron O, Karpij M, Elliott E. DNA methylation analysis of the autistic brain reveals multiple dysregulated biological pathways. *Transl Psychiatry*. 2014;4:e433.
- Feinberg JL, Bakulski KM, Jaffe AE, Tryggvadottir R, Brown SC, Goldman LR, Croen LA, Hertz-Picciotto I, Newschaffer CJ, Fallin MD, et al. Paternal sperm DNA methylation associated with early signs of autism risk in an autism-enriched cohort. *Int J Epidemiol*. 2015;44(4):1199–210.

45. Berko ER, Suzuki M, Beren F, Lemetre C, Alaimo CM, Calder RB, Ballaban-Gil K, Gounder B, Kampf K, Kirschen J, et al. Mosaic epigenetic dysregulation of ectodermal cells in autism spectrum disorder. *PLoS Genet.* 2014;10(5): e1004402.
46. CV B, CJ M, E F, K N, JM G, DC D, J H, N H, JM L, R S et al: Small magnitude effect sizes in epigenetic endpoints are important in children's environmental health studies. *Environ Health Perspect.* in press.
47. Gregory SG, Connelly JJ, Towers AJ, Johnson J, Biscocho D, Markunas CA, Lintas C, Abramson RK, Wright HH, Ellis P, et al. Genomic and epigenetic evidence for oxytocin receptor deficiency in autism. *BMC Med.* 2009;7:62.
48. Behnia F, Parets SE, Kechichian T, Yin H, Dutta EH, Saade GR, Smith AK, Menon R. Fetal DNA methylation of autism spectrum disorders (ASD) candidate genes: association with spontaneous preterm birth. *Am J Obstet Gynecol.* 2015;212(4):533.e1–9.
49. James SJ, Shpyleva S, Melnyk S, Pavliv O, Pogribny IP. Elevated 5-hydroxymethylcytosine in the Engrailed-2 (EN-2) promoter is associated with increased gene expression and decreased MeCP2 binding in autism cerebellum. *Transl Psychiatry.* 2014;4:e460.
50. James SJ, Shpyleva S, Melnyk S, Pavliv O, Pogribny IP. Complex epigenetic regulation of engrailed-2 (EN-2) homeobox gene in the autism cerebellum. *Transl Psychiatry.* 2013;3:e232.
51. Nagarajan RP, Patzel KA, Martin M, Yasui DH, Swanberg SE, Hertz-Picciotto I, Hansen RL, Van de Water J, Pessah IN, Jiang R, et al. MECP2 promoter methylation and X chromosome inactivation in autism. *Autism Res.* 2008; 1(3):169–78.
52. Nagarajan RP, Hogart AR, Gweye Y, Martin MR, LaSalle JM. Reduced MeCP2 expression is frequent in autism frontal cortex and correlates with aberrant MECP2 promoter methylation. *Epigenetics.* 2006;1(4):e1–11.
53. Wang YS Z. Chapter 4, Cell Types of the Placenta. In: *Vascular biology of the placenta.* San Rafael (CA): Morgan & Claypool Life Sciences; 2010.
54. Van Handel B, Prashad SL, Hassanzadeh-Kiabi N, Huang A, Magnusson M, Atanassova B, Chen A, Hamalainen EI, Mikkola HK. The first trimester human placenta is a site for terminal maturation of primitive erythroid cells. *Blood.* 2010;116(17):3321–30.
55. de Goede OM, Razzaghian HR, Price EM, Jones MJ, Kobor MS, Robinson WP, Lavoie PM. Nucleated red blood cells impact DNA methylation and expression analyses of cord blood hematopoietic cells. *Clin Epigenetics.* 2015;7:95.
56. Bakulski KM, Feinberg JI, Andrews SV, Yang J, Brown S, Mckenney SL, Witter F, Walston J, Feinberg AP, Fallin MD. DNA methylation of cord blood cell types: applications for mixed cell birth studies. *Epigenetics.* 2016;11(5):354–62.

Submit your next manuscript to BioMed Central and we will help you at every step:

- We accept pre-submission inquiries
- Our selector tool helps you to find the most relevant journal
- We provide round the clock customer support
- Convenient online submission
- Thorough peer review
- Inclusion in PubMed and all major indexing services
- Maximum visibility for your research

Submit your manuscript at
www.biomedcentral.com/submit

