

UC Berkeley

UC Berkeley Previously Published Works

Title

Epidermal growth factor (EGF)-like repeats of human tenascin-C as ligands for EGF receptor

Permalink

<https://escholarship.org/uc/item/0ph6d5cv>

Journal

Journal of Cell Biology, 154(2)

ISSN

0021-9525

Authors

Swindle, C Scott
Tran, Kien T
Johnson, Terry D
[et al.](#)

Publication Date

2001-07-23

DOI

10.1083/jcb.200103103

Peer reviewed

Epidermal growth factor (EGF)-like repeats of human tenascin-C as ligands for EGF receptor

C. Scott Swindle,² Kien T. Tran,¹ Terry D. Johnson,⁴ Pallab Banerjee,³ Anne M. Mayes,³ Linda Griffith,⁴ and Alan Wells^{1,2}

¹Department of Pathology, University of Pittsburgh, Pittsburgh, PA 15261

²Department of Pathology, University of Alabama at Birmingham, Birmingham, AL 35294

³Department of Materials Science and Engineering, and ⁴Division of Bioengineering and Environmental Health and Department of Chemical Engineering, Massachusetts Institute of Technology, Cambridge, MA 02139

Signaling through growth factor receptors controls such diverse cell functions as proliferation, migration, and differentiation. A critical question has been how the activation of these receptors is regulated. Most, if not all, of the known ligands for these receptors are soluble factors. However, as matrix components are highly tissue-specific and change during development and pathology, it has been suggested that select growth factor receptors might be stimulated by binding to matrix components. Herein, we describe a new class of ligand for the epidermal growth factor (EGF) receptor (EGFR) found within the EGF-like repeats of tenascin-C, an antiadhesive matrix component present during organogenesis, development, and wound repair. Select EGF-like repeats of tenascin-C elicited mitogenesis and EGFR autophosphorylation in an EGFR-dependent manner. Micromolar concentrations of EGF-like repeats induced EGFR autophosphorylation and activated extracellular signal-regulated, mitogen-activated protein kinase to levels

comparable to those induced by subsaturating levels of known EGFR ligands. EGFR-dependent adhesion was noted when the ligands were tethered to inert beads, simulating the physiologically relevant presentation of tenascin-C as hexabrachion, and suggesting an increase in avidity similar to that seen for integrin ligands upon surface binding. Specific binding to EGFR was further established by immunofluorescence detection of EGF-like repeats bound to cells and cross-linking of EGFR with the repeats. Both of these interactions were abolished upon competition by EGF and enhanced by dimerization of the EGF-like repeat. Such low affinity behavior would be expected for a matrix-“tethered” ligand; i.e., a ligand which acts from the matrix, presented continuously to cell surface EGF receptors, because it can neither diffuse away nor be internalized and degraded. These data identify a new class of “insoluble” growth factor ligands and a novel mode of activation for growth factor receptors.

Introduction

The EGF receptor (EGFR)* transduces signals from the extracellular milieu to trigger diverse cell functions. EGFR signaling has been shown to play critical roles in organogenesis, tissue maintenance and repair, and, when dysregulated in cancers, to promote tumor progression (Khazaie et al., 1993; Wells et al., 1998; Wells, 2000). The several known ligands for EGFR are peptide growth factors that are processed from membrane-associated propeptides. These ligands can engage

and activate EGFR in both their soluble and membrane-anchored forms (Brachmann et al., 1989; Anklesaria et al., 1990; Wells et al., 1990) and when chemically tethered to a substratum (Kuhl and Griffith-Cima, 1996). In addition, EGFR signaling and mitogenesis can be fully signaled from plasma membrane-restricted receptors (Wells et al., 1990; Vieira et al., 1996; Haugh et al., 1999). As internalization of ligand serves to attenuate signaling (Wells et al., 1990; Reddy et al., 1996b), presenting an EGFR ligand as part of a larger extracellular complex would present novel signaling and modulatory possibilities. It may, for example, serve to coposition activated integrin and growth factor receptors to modulate integrin functioning in processes like cell migration. Although growth factor receptors have been traditionally thought to interact with high avidity to individual ligands, the discoidin domain receptor recognize and initiate signaling in response to epitopes in matrix collagen (Shrivastava et al., 1997; Vogel

Address correspondence to Alan Wells, Department of Pathology, 713 Scaife, University of Pittsburgh, Pittsburgh, PA 15261. Tel.: (412) 647-7813. Fax: (412) 647-8567. E-mail: wells@msx.upmc.edu

C. Scott Swindle and Kien T. Tran contributed equally to this work.

*Abbreviations used in this paper: EGFR, EGF receptor; ERK, extracellular signal-regulated kinase; M, mutant; MAP, mitogen-activated protein; mEGF, murine EGF; PEO, polyethylene oxide; WT, wild-type.

Key words: receptor signaling; cell-substratum interactions; adhesion; extracellular matrix; tissue engineering

et al., 1997). Thus, it has been hypothesized that similar matrix signals may exist for other growth factor receptors.

Several matrix components possess EGF-like repeats, the functions of which are largely unknown. Two of these components have been suggested to initiate signaling through the EGFR. The EGF-like repeats in laminin and tenascin-C (hexabrachion) have been shown to modulate cell adhesion and cell motility (Prieto et al., 1992; Nelson et al., 1995). Experiments have suggested that these repeats may directly trigger EGFR signaling by acting as very low affinity ligands (Engel, 1989; Panayotou et al., 1989; Nelson et al., 1995) or potentiate signaling from soluble EGF (Jones et al., 1997). However, these previous studies did not directly isolate EGFR signaling or binding and therefore the exact mechanism of signaling remains undetermined. Furthermore, low affinity ligands (dissociation constant k_d in the micromolar range at best) would not be detected by standard binding assays. Low values of solution phase affinity would be predicted for matrix-embedded EGFR ligands because they effectively act from two dimensions, constrained at the cell surface. The effective concentration is increased by being constrained to the interface between the extracellular matrix and the cell surface. Further, the tethered ligand receptor complexes are physically restrained from entering the cell and thus impervious to the major long-term attenuation mechanism of ligand-dependent internalization and degradation (Herbst et al., 1994).

We decided to investigate whether the EGF-like repeats in tenascin-C activate EGFR, as tenascin-C is restricted to sites of tissue development and regeneration and is up-regulated in tumor cells, all of which are sites of EGFR functioning (Erickson, 1993; Chiquet-Ehrismann, 1995). To isolate EGFR signaling, we used NR6 mouse fibroblasts devoid of endogenous EGFR (Pruss and Herschman, 1977) that have been engineered to express various EGFR constructs (Wells, et al., 1990). We found that select EGF-like repeats of tenascin-C were capable of eliciting mitogenesis in an EGFR-dependent manner. Furthermore, although EGFR autophosphorylation was negligible at best, extracellular signal-regulated kinase (ERK) mitogen-activated protein (MAP) kinase activation was comparable to subsaturating levels of known EGFR ligands. These cell responses required the extracellular ligand-binding motifs of EGFR, suggesting direct binding. EGFR-dependent adhesion was noted when the predicted avidity of the EGF-like repeat was increased by dimerization or polyvalency via tethering the ligands to inert beads, thereby simulating the physiologically relevant presentation of tenascin-C as hexabrachion. Immunofluorescent imaging further revealed EGFR-dependent binding of the EGF-like repeats to the cell surface. These bindings were abolished upon preincubation with EGF ligand. Direct proof of interaction was demonstrated by cross-linking of EGFR to the EGF-like repeats of tenascin-C.

Results

EGF-like repeats of tenascin-C have mitogenic activity dependent on functional EGFR

The EGF-like repeats of tenascin-C were expressed and purified as recombinant proteins in *Escherichia coli*; this mode

of expression was chosen because bacterial expression results in fully functional EGF (Reddy et al., 1996a). All 14 repeats were divided among separate clones containing one, two, or three contiguous repeats. Each clone was tested for EGFR-dependent mitogenic activity by a ^3H -thymidine incorporation assay using NR6 fibroblasts transduced to overexpress either the wild-type (WT) or a kinase-inactive mutant (M) EGFR (WT NR6 and M NR6, respectively). The EGFR M mutant contains a methionine substituted for lysine 721, abolishing the kinase activity of the EGFR and, hence, its autophosphorylation. Cells were treated with concentrations of each protein, which varied from 1–4 μM , depending on the preparation/purification. The two proteins corresponding to EGF-like repeats 1/2 (Ten1/2) and 11/12/13 (Ten11/12/13), exhibited mitogenic activity on WT NR6 cells at 2 and 4 μM , respectively, but not at 10 and 1% of their initial concentration (Fig. 1 A). Ten14 (the 14th EGF-like repeat from the NH_2 -terminal end) exhibited mitogenic activity at 3 μM (ninefold over uninduced) and slight mitogenic activity at 0.3 μM (threefold over uninduced), but none at 0.03 μM . Since known soluble EGFR ligands can drive proliferation at ~ 0.01 kd , this suggested that we were at the lower end of effective ligand concentration and below the solution k_d of this matrix-derived ligand (Reddy et al., 1996a). The mitogenic activity was dependent on functional EGFR, as no increased incorporation was observed for the M NR6 cells expressing the kinase-inactive EGFR mutant. To exclude the possibility that these repeats might be potentiating an unknown growth factor signal within the quiescence media, mitogenesis was repeated in serum-free media for the Ten14 repeat. Fold induction of thymidine incorporation over uninduced control in dialyzed serum-free media was comparable to results obtained with quiescence media (Fig. 1 B). Thus, mitogenic stimulation is an inherent property of these repeats. The absence of activity from similar concentrations of proteins containing repeats 9/10, and of EGF-like repeats from laminin $\beta 1$ chain (data not shown), which were cloned and purified in parallel and identical manner, establishes specificity of the observed activity to select EGF-like repeats.

EGF-like repeats of tenascin-C directly activate EGFR

The ability of these three repeat proteins to activate the EGFR was assessed by induction of tyrosine phosphorylation of the EGFR in treated cells. Activation of the WT EGFR of WT NR6 cells was induced upon treatment with each of the three repeat proteins that scored for mitogenesis, as detected by slightly increased tyrosyl-directed phosphorylation (Fig. 2 A). The induced activation required EGFR kinase, because tyrosine phosphorylation of the kinase-inactive EGFR mutant protein of M NR6 cells was not observed upon treatment. The degree of EGFR phosphorylation by the EGF-like repeats was seen to be relatively small compared with EGF or the low-affinity EGF ligand Y13G at concentrations approximately kd (~ 2 nM for EGF; ~ 0.1 μM for Y13G); yet it was comparable to the degree of EGFR phosphorylation achieved by lower (~ 0.01 kd), but physiologically relevant, concentrations of these two ligands (Fig. 3 A). Both EGF and Y13G elicit maximal stimulation of mito-

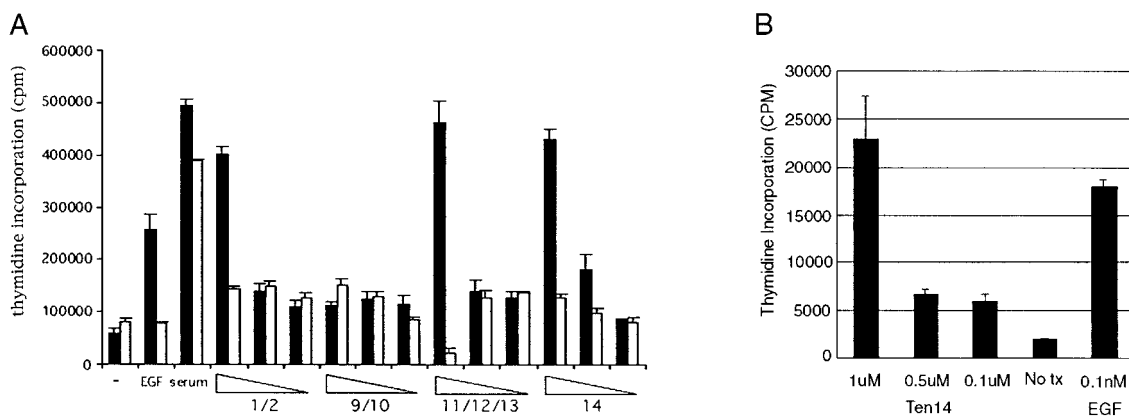


Figure 1. **Tenascin-C EGF-like repeats stimulate cell mitogenesis.** (A) WT (black) or M (open) NR6 cells were exposed to the EGF-like repeat proteins, and ^3H -thymidine incorporation was assessed. EGF (1 nM) and serum (1%) were used as positive controls (for WT and M NR6 cells, respectively). The EGF-like repeat proteins were used at the following concentrations: left bars are 2 μM for 1/2; 1 μM for 9/10; 4 μM for 11/12/13; and 3 μM for 14, and at 10 and 1% of that level for each concentration (middle and right bars). (B) Mitogenesis assay performed in serum-free media on WT NR6 cells with decreasing concentrations of Ten14 as described. No tx designates cells not exposed to ligand. Values are the mean \pm SD (performed in triplicate) for one experiment representative of three experiments.

genic response in WT NR6 cells at concentrations of ~ 0.01 kd (Reddy et al., 1996a). Thus, the activation pattern for EGFR by the tenascin EGF-like repeats in soluble form is similar to that for an EGFR ligand at a concentration significantly below solution kd but significantly above the threshold required to stimulate a mitogenic response.

Because the degree of EGFR phosphorylation is not a sensitive indicator of the degree of mitogenic response, we also determined whether downstream signaling is initiated. A crucial pathway for mitogenesis and motility signaled by EGFR is the one leading to MAP kinase activation. Both ERK MAP kinases were dually phosphorylated in response to the tenascin repeats 1/2, 11/12/13, and 14, but not 9/10 (Fig. 2 B). Again, this was noted only in WT NR6, not M NR6 cells. That the M NR6 cells were competent was demonstrated by exposure to serum inducing both mitogenesis and ERK/ MAP kinase phosphorylation.

This pattern of relatively small phosphorylation of EGFR but robust activation of ERK MAP kinases is not unexpected if one considers the highly nonlinear effects that result from differential rates of signal activation and attenuation of molecules activated downstream from EGFR (Bhalla and Iyengar, 1999). Such nonlinearities can result, for example, in persistent activation of MAP kinase or PKC after the EGF signal is withdrawn and maximal pathway stimulation over a wide range of concentrations of signaling pathway components (Bhalla and Iyengar, 1999). The EGFR is subject to multiple signal attenuation mechanisms, including rapid dephosphorylation and internalization (Welsh et al., 1991; Countaway et al., 1992; Hernandez-Sotomayor et al., 1993), but at the same time is associated with a prolonged activation or slower deactivation of downstream signals, such as persistence of grb2-SOS interactions (Waters et al., 1996). The observed EGFR activation pattern would be expected for either a ligand at concentrations significantly below kd or a low affinity ligand with a high off-rate. This was tested with both a high affinity ligand (EGF, kd ~ 2 nM) and a lower affinity ligand (Y13G-EGF, kd ~ 100 nM; 41;

Fig. 3 B). As observed, EGFR autophosphorylation was barely demonstrable at 0.1 kd for both these ligands. Notably, though, dually phosphorylated ERK MAP kinase could be detected at even lower concentrations: 0.01 kd for both ligands, and both ligands stimulated maximal MAP kinase phosphorylation at 0.01 kd. It was at approximately this level of fractional kd that Ten14 induced dually phosphorylated ERK MAP kinase (Fig. 3 C).

These data suggest that EGFR phosphorylation would be enhanced by limiting attenuation or increasing ligand accessibility. We used sodium vanadate to block receptor dephosphorylation, as this is the most rapid attenuation event (Hernandez-Sotomayor et al., 1993; Fig. 3 D). Treatment with this generalized tyrosine phosphatase inhibitor increased EGFR phosphotyrosine content after exposure to Ten14; similar vanadate-increased EGFR phosphorylation was noted in response to low levels of EGF (0.01 nM), demonstrating fidelity of the assay. To increase signaling persistence and/or ligand accessibility, we tethered EGFR ligands via the NH_2 -termini to ~ 1 - μm diameter latex beads using 20 nm polyethylene oxide (PEO) flexible spacer chains to ensure ligand accessibility. This represents an initial attempt to present low affinity ligands in a context that mirrors ligands constrained within the extracellular matrix (Kuhl and Griffith-Cima, 1996). When the tenascin 14 repeat was covalently tethered to these beads, a significantly higher level of tyrosyl-phosphorylation was observed over that obtained with soluble, monomeric ten14 (Fig. 3 E). It was noted that EGFR phosphorylation increased with time exposed to the tenascin-tethered beads; however, it remains to be determined whether this is due to slow diffusion and settling of beads or reflects a situation akin to eph receptor activation (Davis et al., 1994). These data support the finding that select tenascin EGF-like repeats directly activate the EGF receptor from an insoluble presentation mode. Furthermore, the initial findings with these insoluble ligand complexes strongly suggest that manner of ligand presentation alters the balance between signaling and attenuation.

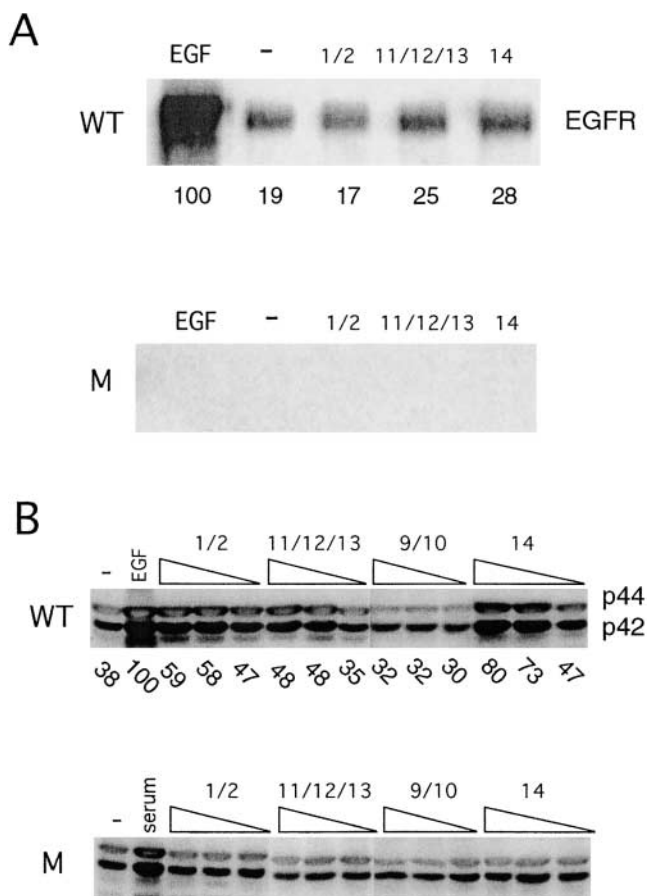


Figure 2. Tenascin EGF-like repeats activate the EGFR kinase cascade. WT (top) and M (bottom) NR6 cells were treated with EGF-like repeat proteins and activation of EGFR signaling was assessed. (A) EGFR autophosphorylation was determined by antiphosphotyrosine immunoblotting of immunoprecipitated EGFR after treatment with EGF or EGF-like repeats 1/2 (5 μ M), 11/12/13 (1 μ M), or 14 (6 μ M). Immunoblotting with an antibody to EGFR demonstrated equal loading (data not shown). (B) ERK MAP kinase activation was assessed by immunoblotting for dually phosphorylated p44/p42 ERK, indicative of activated ERK. The cells were treated with various concentrations of the EGF-like repeats (5 μ M for 1/2; 2 μ M for 9/10; 1 μ M for 11/12/13; and 6 μ M for 14) and at 50 and 10% of those levels. EGF and serum were used as positive controls (for WT and M NR6 cells, respectively). Numbers below a lane represent relative values of intensity for pEGFR or p42 in each lane for that experiment as determined by densitometry. In both panels, an experiment representative of at least three determinations is shown.

The MAP kinase signaling pathway is activated by the EGF-like repeats of tenascin-C through their direct activation of EGFR

That EGFR kinase activity is required for downstream cell responses was corroborated directly by inhibiting EGFR using the pharmacological agent PD153035. This selective inhibitor of EGFR kinase blocked ERK MAP kinase activation by the tenascin EGF-like repeats (Fig. 4 A).

The foregoing results may be due to the tenascin repeats interacting with an unknown receptor but transmitting signal through an intact EGFR kinase, as has been reported recently for G protein-linked receptors (Daub et al., 1996), integrins (Li et al., 1999), and growth hormone receptor (Yamauchi et al., 1997). To probe this unlikely possibility,

we blocked the external binding site of known EGFR ligands using a nonactivating antibody (clone 528; Sunada et al., 1986). The extracellular domain antibody inhibited the induced MAP kinase activation (Fig. 4 B), indicating that activation of the EGFR by tenascin-C EGF-like repeat occurs through the ligand binding, extracellular domain of the EGFR. However, it is still possible that the signals occur by a receptor cascade in which the unknown receptor causes release of membrane-anchored EGFR ligands that then act in autocrine fashion, as has been shown for G protein-coupled receptors (Prenzel et al., 1999). This is unlikely, as NR6 cells are not known to produce significant levels of EGFR ligands. However, we challenged B82 cells that have been shown not to express any of the known EGFR ligands (Oehrman et al., 1998) with the tenascin 14 fragment (Fig. 4 C). The tenascin 14 fragment activated ERK MAP kinase similarly to what had been noted in WT NR6 cells.

Tenascin EGF-like repeats directly bind to EGFR

Final proof that these EGF-like repeats act as novel direct EGFR ligands, however, requires a visualization of EGFR-dependent binding and/or a demonstration of an interaction with EGFR. In direct binding assays, we were unable to detect specific binding to the EGFR by the EGF-like repeat proteins at micromolar concentration (data not shown). This indicates that the ligand is quite low affinity (≥ 10 μ M) when compared with prototypical growth factor ligands for EGFR (in the low nanomolar range). This proposed low solution affinity of the tenascin 14 repeats appears to be commensurate with the solution affinities for integrin ligands, which are in the micromolar range for fibronectin (Akiyama and Yamada, 1985) and the millimolar range for linear arginine-glycine-aspartic acid peptides (Pierschbacher and Ruoslahti, 1987). Since specific binding to these integrin ligands can be readily detected by presenting the ligands from the solid phase (i.e., bound to beads or the substrate; Pierschbacher and Ruoslahti, 1984) in a relatively normal physiological manner, we reasoned that specific binding to the tenascin 14 repeats might also be detected by presenting the repeats in a method that resembles their presentation in ECM. We generated ~ 1 - μ m diameter beads that presented a high surface density of ligand (either tenascin 14 or EGF). Beads presenting EGF or the tenascin 14 fragment exhibited specific adhesion to WT NR6 cells compared with control beads (Fig. 5). That this occurred via EGFR is demonstrated by blocking of binding by anti-EGFR antibodies (number of bound beads were reduced by $>90\%$ in each of three independent experiments). There was negligible binding to M721 NR6 cells, which are devoid of EGFR.

Direct interaction of the EGF-like repeats with EGFR should be enhanced by increasing the valency of the ligand, with even dimerization sufficient to achieve a log-greater avidity (Mammen et al., 1998). Ligands were predimerized with an antibody to the poly-His tag at the NH₂ terminus of the expressed repeats. The binding of these ligands to WT NR6 cells was visualized by indirect immunofluorescence (Fig. 6). As a positive control, murine EGF (mEGF-His6) was cloned and purified in a similar manner as the tenascin EGF-like repeats. Ten14 dimers bound at a level significantly greater than antibody alone. Most importantly, this

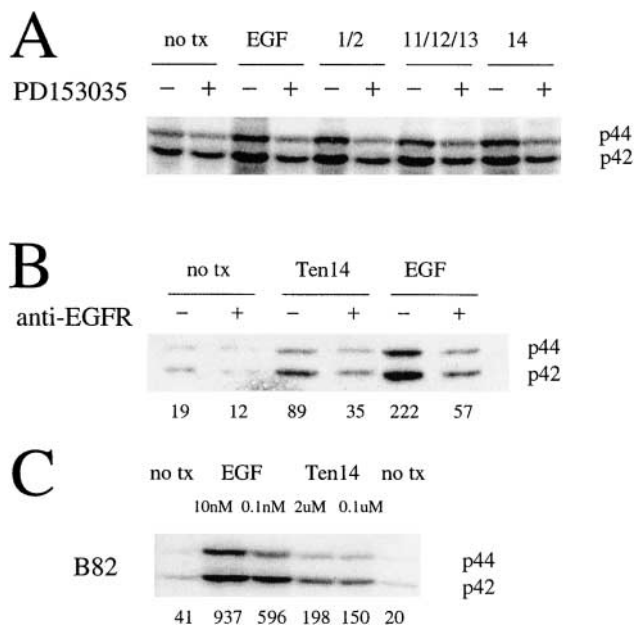


Figure 4. Inhibition of EGFR activation prevents signaling from EGF-like repeats. (A) WT NR6 cells were treated with the tenascin EGF-like repeats at concentrations that activate ERK MAP kinase (5 μ M for 1/2; 1 μ M for 11/12/13; and 6 μ M for 14). The cells were treated with the EGF-like repeat proteins in the absence (–) or presence (+) of the EGFR-specific pharmacologic inhibitor PD153035. no tx represents no ligand. (B) WT NR6 cells were treated with Ten14 (1 μ M) or EGF (0.01 nM) in the presence (+) or absence (–) of an antibody specific for the extracellular domain of EGFR (Clone 528; Calbiochem) under serum-free conditions. (C) B82 cells expressing WT EGFR were challenged with tenascin 14 repeats (2 μ M) under serum-free conditions. Numbers below a lane represent relative values of intensity for p42 in each lane for that experiment as determined by densitometry. Shown are one of three experiments.

chemically cross-linked proteins. In summation, these data demonstrate that Ten14 directly binds to EGFR.

Discussion

These data indicate that select EGF-like repeats may act as low affinity ligands of the EGFR. We could detect binding to EGFR upon tethering tenascin fragments to a bead to present a multivalent ligand in a manner similar to a matrix-embedded situation, a situation which is predicted of low affinity ligands and has been observed for integrin ligands (Juliano et al., 1993; Maheshwari et al., 2000), and by increasing the valency by dimerization with antibody. Most conclusively, we could cross-link an EGF-like repeat to EGFR. It is not surprising that these repeats are of low affinity, since they lack the second loop of the EGF structure that is required for high affinity interaction with the receptor (Montelione et al., 1987; Engler et al., 1988; Tadaki and Niyogi, 1993). Still, these tenascin EGF-like repeats may represent a new class of matrix-encoded ligands for growth factor receptors (“matrikines”), further supporting the opinion that “there is little or no justification for drawing a distinction between adhesion receptors and receptors for soluble ligands...indeed, many “soluble” growth factors often do not function as truly soluble molecules” (Hynes, 1999).

It has been suggested previously that EGF-like repeats potentiate signaling from growth factor receptors through the activation of integrins and other signaling transducers (Jones et al., 1997). The entire matrix protein tenascin-C presents numerous interactive and signaling elements. However, we do not feel that this indirect action explains the signaling from the EGF-like repeats. First, these repeats activated biochemical and biological responses in the absence of soluble factors (i.e., serum-free conditions) dependent on binding to a signaling competent EGFR (Figs. 1–4). These data do not exclude the possibility of signaling through release of membrane-associated EGFR ligands (Daub et al., 1996; Prenzel et al., 1999). This scenario is countered by the second set of data, those demonstrating direct interactions between Ten14 and EGFR (Figs. 5–7). We could demonstrate EGFR-specific bead binding and Ten14 binding and cross-linking. These interactions were prevented by anti-EGFR antibodies and competed by unlabeled EGF, demonstrating that they occurred through the ligand binding site of EGFR. In short, we have provided definitive evidence for direct binding of EGFR by EGF-like repeats.

The physiological role of such a low affinity ligand remains an open question. One of the main attenuation mechanisms necessary to prevent excessive signaling is EGFR internalization and subsequent degradation of receptor and/or ligand (Welsh et al., 1991; Reddy et al., 1996b). For a ligand that is embedded in the extracellular matrix, such internalization would be physically limited and constantly represent itself even after dissociation due to its physical proximity to the cell surface. A matrix-embedded ligand with high affinity would lead to continuous, strong signaling through EGFR; this has been shown to lead to cellular transformation (DiFiore et al., 1987; Wells et al., 1990). In contrast, a ligand with low affinity (fast off rate; Ebner and Derynck, 1991) would result in ligand decoupling from receptor, allowing dephosphorylation and other mechanisms (Welsh et al., 1991; Countaway et al., 1992; Hernandez-Sotomayor et al., 1993) to function more efficiently at attenuating signaling.

Tenascin-C is an excellent candidate to present such activators of a receptor that can stimulate both cell proliferation and migration. Tenascin-C is expressed, by and large, only during periods of organogenesis and remodeling, such as the fetal/neonatal growth period and during wound repair, and is expressed as a hexamer allowing for physiological presentation of multiple potential matricrine ligands (Schalkwijk et al., 1991; Whitby et al., 1991; Erickson, 1993; Chiquet-Ehrismann, 1995). During these events EGFR signaling is required both for proliferation and migration of the cells (Ashcroft et al., 1995; Miettinen et al., 1995; Sibilina and Wagner, 1995; Threadgill et al., 1995; Xie et al., 1998; Kim et al., 1999). In support of such a model, we have found that NR6 fibroblasts expressing motility competent WT EGFR (8) present greater transmigration of the human extracellular matrix Amgel than NR6 cells expressing the motility-deficient c'973 EGFR ($26.8 \pm 0.2\%$ vs. $9.6 \pm 0.3\%$ of the invasiveness of highly invasive HT1080 fibrosarcoma cells; $P < 0.01$). This result is similar to transmigration actuated by EGFR triggered by ligand derived either from autocrine signaling (Xie et al., 1995) or the extracellular milieu (Chakrabarty et al., 1995; Kassis et al., 1999). This is intriguing as

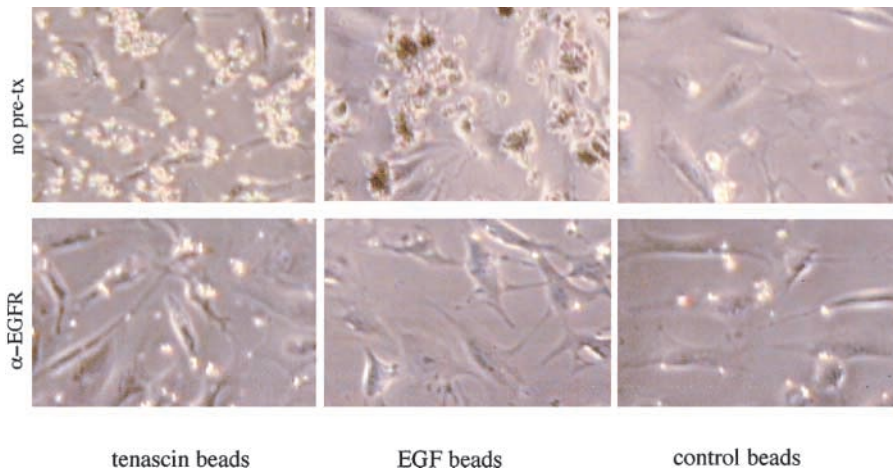
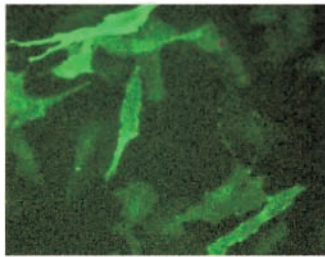


Figure 5. Beads presenting tethered tenascin 14 fragments bind to EGFR.

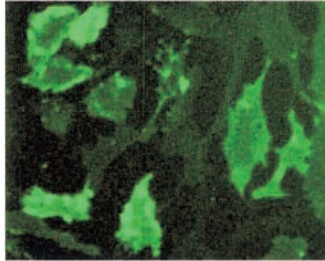
WT NR6 cells were treated for 4 h at 37°C with beads tethered with either tenascin 14 or EGF or control beads. Cells were washed three times with iced PBS and visualized by phase-contrast microscopy (top). In parallel, cells were treated with 5 µg/ml anti-EGFR antibody (clone 528; Sunada et al., 1986; Turner et al., 1996) for 15 min before addition of beads and continuing throughout the 4 h (bottom). Beads appear as bright, refractile, and translucent spheres mainly above the plane of the cells. Shown is one of three experiments.

A

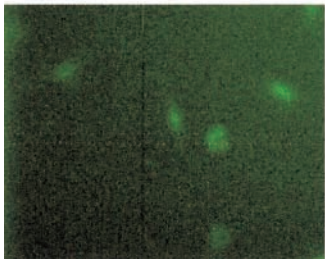
a) mEGF-His6 (50nM)



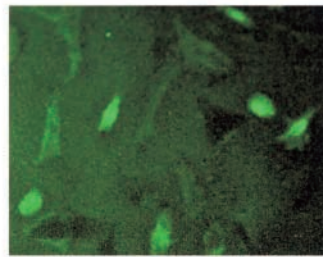
b) mEGF-His6 (50nM)-Ab (25nM) Dimer



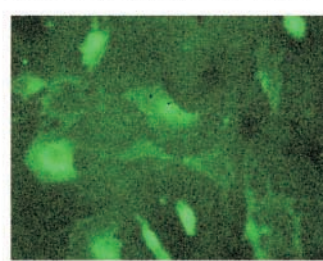
c) Pre-incubate EGF (100nM)/ mEGF-His6(50nM)-Ab(25nM)



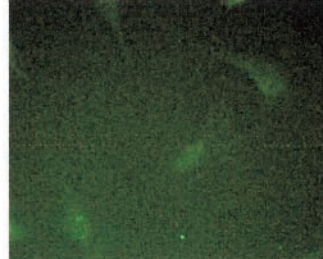
d) Ten14 (2µM)



e) Ten14 (2µM)-Ab (0.63µM) Dimer



f) Pre-inc. EGF(100nM)/Ten14(2µM)-Ab(0.63µM)



B

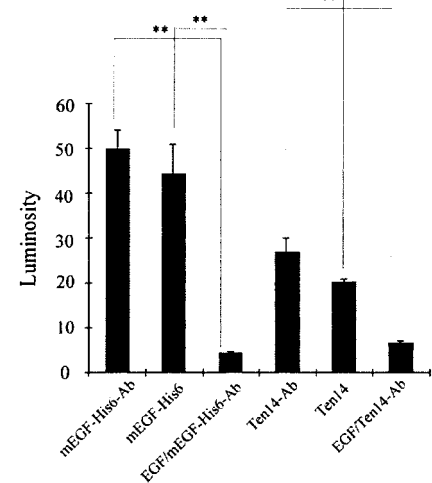


Figure 6. Tenascin 14 binds to EGFR-expressing WT NR6 cells.

(A) WT NR6 cells were quiesced for 24 h and exposed to various concentrations of monomeric or dimerized ligand to visualize binding to EGFR. Ten14 and mEGF-His6 expressed from the same vector (pRSETA; Invitrogen) as Ten14 were incubated overnight for dimerization with monoclonal anti-HisG (Invitrogen) antibody that recognized the NH₂-terminal poly His epitope of mEGF-His6 and Ten14. This was at concentrations of 50 nM for mEGF-His6 and 25 nM for monoclonal anti-HisG antibody and 2 µM Ten14 with 0.63 µM of the antibody (Ab) to increase affinity to receptor.

Ligands were incubated for 10 min at room temperature before fixation. 1:500 of goat anti-mouse antibody conjugated to Oregon green was used as secondary antibody before visualizing by fluorescence microscopy and captured at a constant exposure by a SPOT II CCD camera. a, mEGF-His6 (50 nM); b, mEGF-His6 (50 nM) dimerized with primary antibody (25 nM); c, cells were preincubated with EGF (100 nM) for 5 min to compete for EGFR with mEGF-His6 (50 nM) dimerized with antibody (25 nM); d, Ten14 (2 µM); e, Ten14 (2 µM) dimerized with primary antibody (0.63 µM); f, cells preincubated with EGF (100 nM) for 5 min with Ten14 (2 µM) preincubated with 0.63 µM antibody subsequently added. (B) Each cell in four randomly selected fields were outlined and measured for luminosity as compared with background. The data are the mean ± SE of an average of >25 cells per experimental condition. Statistical analyses were performed via Student's *t* test. Double asterisk represents *P* < 0.01. Shown is one representative of two sets of experiments.

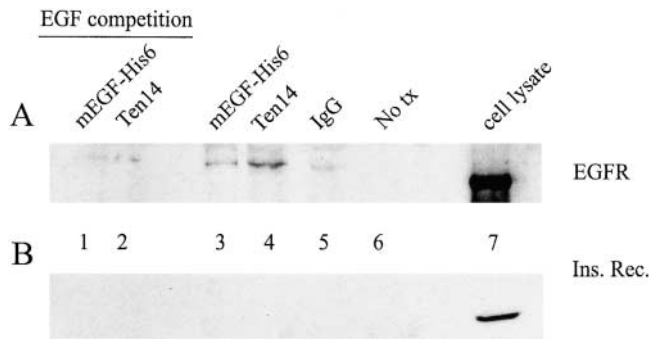


Figure 7. Tenascin 14 can be cross-linked to EGFR. Ten14 (2 μ M) and mEGF (mEGF-His6; 10 nM) were bound and chemically cross-linked to quiesced WT NR6 fibroblasts and immunoprecipitated from ensuing lysates with anti-HisG. Presence of EGFR (A) or insulin receptor β chain was assessed by immunoblotting with respective antibodies. In lanes 1 and 2, cells were preincubated with 100 nM EGF for 5 min and throughout cross-linking as a competitive ligand. In lane 5, cells were exposed to and cross-linked with antibody alone and lysate was immunoprecipitated. From left to right: 1, EGF/mEGF-His6 (pretreatment with EGF and addition of mEGF-His6 ligand); 2, EGF/Ten14 (pretreatment with EGF and addition of Ten14 ligand); 3, mEGF-His6 (10 nM); 4, Ten14 (2 μ M); 5, IgG (anti-HisG antibody); 6, No tx (no treatment with ligand); and 7, cell lysate (WT NR6 lysate). Shown is a representative of two experiments.

NR6 cells do not produce known EGFR ligands, and Amgel, derived from human amniotic membranes (Siegal et al., 1993), does not contain detectable levels of EGF, TGF- α , or other soluble EGFR ligands, but does contain appreciable levels of tenascin (75 mg/ml out of \sim 1,300 mg/ml proteinaceous material). Thus, low affinity ligands encrypted within matrix components might represent a new mode of modulation of cellular responses by matrix acting directly through growth factor receptors.

Materials and methods

Cell lines and plasmids

The establishment and maintenance of the WT and M NR6 cell lines have been described previously (Wells et al., 1990; Chen et al., 1994). In brief, cells were grown in MEM with 7.5% fetal calf serum and 350 μ g/ml G418. Cells were quiesced in MEM containing 1% dialyzed fetal calf serum. Failure to adequately quiesce the cells results in higher background phosphorylation of EGFR and ERK even in the absence of exogenous added EGFR ligand. The percentage of dialyzed serum and length of time of the quiescence before testing must be empirically determined for each lot of dialyzed serum. For the NR6 cells and our lots of serum, 24 h of quiescence was sufficient. Tenascin-C cDNA was generated from human placental RNA by reverse transcriptase PCR using tenascin-C-specific primers (cgcgatccggcccaactgctctgagc and ccggaattcagacacctgagcagtc), and ligated into pTrc-His-A (Invitrogen) to yield plasmid pTrc-ten. DNAs coding for specific EGF-like repeat regions within tenascin-C were generated from the pTrc-ten template by PCR and ligated into pRSET-A (Invitrogen) to yield plasmids pTen-1/2, -9/10, -11/12/13, and -14 with the numbers corresponding to the order with which each repeat occurs within tenascin C. Sequences of primer pairs used in the PCR were cgcgatccggcccaactgctctgagc and ccggaattcagacacctgagcagtc for pTen-1/2; cgcgatccagcagctacgggtgc and ccggaattcctggcagctccggcag for pTen-9/10; cgcgatccgggatcccaatgc and ccggaattcggatgctggccacag for pTen-11/12/13; and cgcgatccggccagcactctgc and ccggaattcagacacctgagcagtc for pTen-14. mEGF-His6 was similarly cloned to serve as a control. These clonings yielded the EGF-like repeats and mEGF preceded by poly-His.

Expression and purification of EGF-like repeat proteins

Midlog phase cultures of *Escherichia coli* strain BL21/DE3/pLys-S (Strat-

agene) transformed with the individual expression plasmids were induced for recombinant protein expression with 1 mM isopropyl- β -D-thiogalactopyranoside for 4 h at 37°C. Bacteria were harvested by centrifugation for 10 min at 5,000 g at 4°C, and bacterial lysates were prepared by extraction with 0.02 culture volumes of B-PER detergent (Pierce Chemical Co.). Recombinant proteins were purified from bacterial lysates by nickel-agarose chromatography with imidazole elution. Purified protein was dialyzed against PBS, 0.25 mM 2-mercaptoethanol for 24 h at room temperature.

Mitogenesis assay

Cells were quiesced for 24 h under normal growth conditions in starvation medium (serum-free growth medium supplemented with 1% dialyzed fetal calf serum). The ligand-induced 3 H-thymidine incorporation assay has been described previously (Chen et al., 1996). In brief, cells were exposed to EGF (1 nM), serum (1%), or various concentrations of EGF-like repeat proteins for 24 h. 3 H-thymidine was added to the cells for the last 8 h to determine stimulation of proliferation.

Phosphorylation assays

For assaying EGFR activation, quiesced cells were treated with ligand for 5 min in quiescence medium (for the experiments described in Fig. 3 D only, the medium was supplemented with 0.1 mM sodium vanadate during this time period and treated for 30 min). When indicated in the figure legends, after cells were quiesced the experiment was performed under serum-free conditions; this further reduces background phosphorylation of ERK. Detergent lysates were immunoprecipitated at 4°C with anti-EGFR antibody (Ab-1; Oncogene Research Products) bound to protein A-conjugated agarose (GIBCO BRL). Immunoprecipitated EGFR was analyzed for tyrosine phosphorylation by immunoblotting using antiphosphotyrosine antibody (PY20; Transduction Laboratories). For assessing MAP kinase activation, quiesced cells were treated with ligand for 5 min in the presence or absence of anti-EGFR Ab-1 (4 μ g/ml; Calbiochem) or PD153035 (1 μ M). Whole cell lysates were analyzed for dually-phosphorylated ERK MAP kinase by immunoblotting using antiphospho-MAP kinase antibody (New England Biolabs, Inc.). Equal loading was assured using the pan-erk antibody. Relative densitometric values were derived with the NIH Image shareware and Adobe Photoshop[®] software.

Tethered ligands

Tenascin 14 fragments and EGF were covalently tethered to surfaces to present the ligands in a manner analogous to physiological presentation of matrix-associated tenascin. Poly(methyl methacrylate) latex beads were synthesized by dispersion polymerization using an amphiphilic comb copolymer stabilizer, following a procedure adapted from (Banerjee et al., 2000). A comb stabilizer comprised of methylmethacrylate, polyethylene glycol methacrylate (Mn = 526 g/mol), and methoxypolyethylene glycol methacrylate (Mn = 425 g/mol) in a weight ratio of 30:10:10 was synthesized by free radical polymerization using AIBN as initiator. The hydroxy-terminated polyethylene glycol side chains were subsequently carboxylated by refluxing 16 g of comb with 10 g succinic anhydride, and 0.15 ml N-methyl imidazole in 300 ml of dichloroethane overnight at 80°C. The carboxylated product was precipitated and washed with acidified water. Polyethylene methylmethacrylate latexes were synthesized by the addition of 9 ml methylmethacrylate, 1.25 g of carboxylated comb stabilizer, 1.2 ml vinyl methacrylate cross-linking agent, and 0.50 g of ammonium persulfate initiator to 45 ml of 70:30 (vol/vol) methanol/water. The reaction proceeded at 50°C for 3 h, resulting in a highly stable dispersion of micron-sized polyethylene methylmethacrylate latex beads, each coated by comb polymers that situate and become grafted at the water/bead interface. The carboxylated latex suspension was purified by repeated centrifugation and redispersion, before peptide coupling.

The NH₂-terminal amine groups of EGF and tenascin 14 fragments were used to covalently link the peptides to ends of the PEO chains emanating from the surface of the latex beads. Beads were resuspended in dry ethanol with 20 mg/mL sulfo-NHS (Pierce Chemical Co.) and 1-ethyl-3-(3-dimethylaminopropyl)carbodiimide hydrochloride (Pierce Chemical Co.) and activated at room temperature for 3 h, then centrifuged to remove supernatant and resuspended in ethanol for a total of three washes. Beads were washed a final time in 100 mM phosphate buffer, pH 7, and resuspended in 5 μ g/mL mouse EGF (Collaborative Biomedical), tenascin 14 fragment, or buffer alone in 100 mM phosphate buffer, pH 7. The coupling reaction was allowed to proceed for 24 h at 4°C. Unreacted peptide was removed and residual NHS reactivity blocked by washing three times in 100 mM tris buffer, pH 7. The beads were then washed once with sterile PBS before addition to cells.

Immunofluorescence

WT NR6 cells were quiesced at 50% confluency. Mouse anti-HisG antibody (Invitrogen) was incubated 24 h at 4°C with Ten14 or mEGF-His6 for dimerization. After quiescence, ligand, either without antibody or antibody-ligand mix, was added to cells in serum-free media and incubated for 10 min at room temperature. 100 nM EGF served as a competitor and was added 5 min before the Ten14 or mEGF-His6. Cells were fixed with 3% formaldehyde for 15 min at room temperature, washed three times with PBS and incubated in 1% BSA for 30 min. Cells that were exposed to ligand alone were washed twice with PBS and incubated with mouse anti-HisG antibody (Invitrogen; 1:1000) for 30 min at 37°C. Cells were washed five times with PBS and secondary goat anti-mouse conjugated to Oregon green (Molecular Probes; 1:1,000) was added at 37°C for 30 min. Cells were once again washed three times, mounted, and viewed.

Immunoprecipitation

WT NR6 cells were quiesced at 80% confluency. Cells were washed once with PBS. 100 nM EGF served as a competitor and was added 5 min before the Ten14 or mEGF-His6. Cells were then washed with PBS and incubated with ligands Ten14 (2 μ M) or mEGF-His6 (10 nM) in PBS for 5 min at room temperature. In parallel, cells were incubated with just PBS (no tx) or with monoclonal anti-HisG (0.01 μ M) in PBS. Dithiobis(succinimidyl propionate) (Pierce Chemical Co.) was added to the solution and the cells were placed at 4°C for 30 min. Cells were then washed with 0.2% glycine solution in PBS twice and incubated with 0.2% glycine in PBS for 5 min at 4°C followed by a final wash with 0.2% glycine in PBS once again. Cells were lysed with RIPA lysis buffer with PMSF, aprotinin, and leupeptin as protease inhibitors. 30 μ l of protein G agarose beads (GIBCO BRL) and mouse anti-HisG (Invitrogen; final concentration, 0.01 μ M) was added to the lysate and incubated overnight. Beads were washed for a total of five times. Lysates were separated by SDS-PAGE with 2-mercaptoethanol (to cleave the cross-linker), transferred, and immunoblotted. The upper half of the membrane was probed with a monoclonal anti-EGFR (Zymed Laboratories; 1:500) and the bottom for polyclonal anti-insulin receptor β -subunit (Transduction Laboratories; 1:1,000).

We thank Alan Hall and Doug Lauffenburger for critical insights and discussions. We thank Hidenori Shiraha and Latha Satish for excellent assistance with the immunofluorescence studies.

These studies were supported by grants from the National Institutes of Health/National Institute of General Medical Sciences and the National Science Foundation.

Submitted: 22 March 2001

Revised: 24 May 2001

Accepted: 29 May 2001

References

- Akiyama, S.K., and K.M. Yamada. 1985. Synthetic peptides competitively inhibit both direct binding to fibroblasts and functional biological assays for the purified cell-binding domain of fibronectin. *J. Biol. Chem.* 260:4492–4500.
- Anklesaria, P., J. Teixido, M. Laiho, J.H. Pierce, J.S. Greenberger, and J. Massague. 1990. Cell adhesion mediated by binding of membrane-anchored transforming growth factor alpha to epidermal growth factor receptors promotes cell proliferation. *Proc. Natl. Acad. Sci. USA.* 87:3289–3293.
- Ashcroft, G.S., M.A. Horan, and M.W. Ferguson. 1995. The effects of ageing on cutaneous wound healing in mammals. *J. Anat.* 187:1–26.
- Banerjee, P., D.J. Irvine, A.M. Mayes, and L.G. Griffith. 2000. Polymer latexes for controlling cell adhesion and receptor-mediated interactions. *J. Biomed. Mater. Res.* 50:331–339.
- Bhalla, U.S., and R. Iyengar. 1999. Emergent properties of networks of biological signaling pathways. *Science.* 283:381–387.
- Brachmann, R., P.B. Lindquist, M. Nagashima, W. Kohr, T. Lipari, M. Napier, and R. Derynck. 1989. Transmembrane TGF- α precursors activate EGF/TGF- α receptors. *Cell.* 56:691–700.
- Chakrabarty, S., S. Rajagopal, and S. Huang. 1995. Expression of antisense epidermal growth factor receptor RNA downmodulates the malignant behavior of human colon cancer cells. *Clin. Exp. Metastasis.* 13:191–195.
- Chen, P., K. Gupta, and A. Wells. 1994. Cell movement elicited by epidermal growth factor receptor requires kinase and autophosphorylation but is separable from mitogenesis. *J. Cell Biol.* 124:547–555.
- Chen, P., H. Xie, and A. Wells. 1996. Mitogenic signaling from the EGF receptor is attenuated by a motility-associated phospholipase C- γ /protein kinase C feedback mechanism. *Mol. Biol. Cell.* 7:871–881.
- Chiquet-Ehrismann, R. 1995. Tenascins, a growing family of extracellular matrix proteins. *Experientia.* 51:853–862.
- Countaway, J.L., A.C. Nairn, and R.J. Davis. 1992. Mechanism of desensitization of the epidermal growth factor receptor protein-tyrosine kinase. *J. Biol. Chem.* 267:1129–1140.
- Daub, H., T.U. Weiss, C. Wallasch, and A. Ullrich. 1996. Role of transactivation of the EGF receptor in signalling by G-protein-coupled receptors. *Nature.* 379:557–560.
- Davis, S., N.W. Gale, T.H. Aldrich, P.C. Maisonpierre, V. Lhotak, T. Pawson, M. Goldfarb, and G.D. Yancopoulos. 1994. Ligands for EPH-related receptor tyrosine kinases that require membrane attachment or clustering for activity. *Science.* 266:816–819.
- DiFiore, P.P., J.H. Pierce, T.P. Fleming, R. Hazan, A. Ullrich, C.R. King, J. Schlessinger, and S.A. Aaronson. 1987. Overexpression of the human EGF receptor confers an EGF-dependent transformed phenotype to NIH 3T3 cells. *Cell.* 51:1063–1070.
- Ebner, R., and R. Derynck. 1991. Epidermal growth factor and transforming growth factor- α : differential intracellular routing and processing of ligand-receptor complexes. *Cell Regul.* 2:599–612.
- Engel, J. 1989. EGF-like domains in extracellular matrix proteins: localized signals for growth and differentiation? *FEBS Lett.* 251:1–7.
- Engler, D.A., R.K. Matsunami, S.R. Campion, C.D. Stringer, A. Stevens, and S. Niyogi. 1988. Cloning of authentic human epidermal growth factor as a bacterial secretory protein and its initial structure-function analysis by site-directed mutagenesis. *J. Biol. Chem.* 263:12384–12390.
- Erickson, H.P. 1993. Tenascin-C, tenascin-R and tenascin-X: a family of talented proteins in search of functions. *Curr. Opin. Cell Biol.* 5:869–876.
- Haugh, J.M., K. Schooler, A. Wells, H.S. Wiley, and D.A. Lauffenburger. 1999. Effect of epidermal growth factor receptor internalization on regulation of the phospholipase C- γ signaling pathway. *J. Biol. Chem.* 274:8958–8965.
- Herbst, J.J., L.K. Opresko, B.J. Walsh, D.A. Lauffenburger, and H.S. Wiley. 1994. Regulation of postendocytic trafficking of the epidermal growth factor receptor through endosomal retention. *J. Biol. Chem.* 269:12865–12873.
- Hernandez-Sotomayor, S.M.T., C.L. Artega, C. Soler, and G. Carpenter. 1993. Epidermal growth factor stimulates substrate-selective protein-tyrosine phosphatase activity. *Proc. Natl. Acad. Sci. USA.* 90:7691–7695.
- Hynes, R.O. 1999. Cell adhesion: old and new questions. *Trends Biol. Sci.* 24: M33–M37.
- Jones, P.L., J. Crack, and M. Rabinovitch. 1997. Regulation of tenascin-C, a vascular smooth muscle cell survival factor that interacts with the α v β 3 integrin to promote epidermal growth factor receptor phosphorylation and growth. *J. Cell Biol.* 139:279–293.
- Juliano, D.J., S.S. Saavedra, and G.A. Trusky. 1993. Effect of the conformation and orientation of adsorbed fibronectin on endothelial cell spreading and the strength of adhesion. *J. Biomed. Mater. Res.* 27:1103–1113.
- Kassis, J., J. Moellinger, H. Lo, N. Greenberg, H.-G. Kim, and A. Wells. 1999. A role for phospholipase C- γ -mediated signaling in tumor cell invasion. *Clin. Cancer Res.* 5:2251–2260.
- Khazaie, K., V. Schirrmacher, and R.B. Lichtner. 1993. EGF receptor in neoplasia and metastasis. *Cancer and Metastasis Reviews.* 12:255–274.
- Kim, H., T. Turner, J. Kassis, J. Souto, and A. Wells. 1999. EGF receptor signaling in prostate development. *Histol. Histopathol.* 14:1175–1182.
- Kuhl, P.R., and L.G. Griffith-Cima. 1996. Tethered epidermal growth factor as a paradigm for growth factor-induced stimulation from the solid phase. *Nat. Med.* 2:1022–1027.
- Li, J., M.L. Lin, G.J. Wiepz, A.G. Guadarrama, and P.J. Bertics. 1999. Integrin-mediated migration of murine B82L fibroblasts is dependent on the expression of an intact epidermal growth factor receptor. *J. Biol. Chem.* 274: 11209–11219.
- Maheshwari, G., G. Brown, D.A. Lauffenburger, A. Wells, and L.G. Griffith. 2000. Cell adhesion and motility depend on nanoscale RGD clustering. *J. Cell Sci.* 113:1677–1686.
- Mammen, M., S.-K. Choi, and G.M. Whitesides. 1998. Polyvalent interactions in biological systems: implications for design and use of multivalent ligands and inhibitors. *Angew. Chem. Int. Ed.* 37:2754–2794.
- Miettinen, P.J., J.E. Berger, J. Meneses, Y. Phung, R.A. Pedersen, Z. Werb, and R. Derynck. 1995. Epithelial immaturity and multiorgan failure in mice lacking epidermal growth factor receptor. *Nature.* 376:337–341.
- Montelione, G.T., K. Wuthrich, E.C. Nice, A.W. Burgess, and H.A. Scheraga. 1987. Solution structure of murine epidermal growth factor: determination of the polypeptide backbone chain-fold by nuclear magnetic resonance and

- distance geometry. *Proc. Natl. Acad. Sci. USA*. 84:5226–5230.
- Nelson, J., W.E. Allen, W.N. Scott, J.R. Bailie, B. Walker, N.V. McFarren, and D.J. Wilson. 1995. Murine epidermal growth factor (EGF) fragment (33–42) inhibits both EGF- and laminin-dependent endothelial cell motility and angiogenesis. *Cancer Res.* 55:3772–3776.
- Oehrman, G.T., H.S. Wiley, and D.A. Lauffenburger. 1998. Escape of autocrine ligands into extracellular medium: experimental test of theoretical model predictions. *Biotechnol. Bioeng.* 57:571–582.
- Panayotou, G., P. End, M. Aumailley, R. Timpl, and J. Engel. 1989. Domains of laminin with growth-factor activity. *Cell*. 56:93–101.
- Pierschbacher, M.D., and E. Ruoslahti. 1984. Cell attachment activity of fibronectin can be duplicated by small synthetic fragments of the molecule. *Nature*. 309:30–33.
- Pierschbacher, M.D., and E. Ruoslahti. 1987. Influence of stereochemistry of the sequence Arg-Gly-Asp-Xaa on binding specificity in cell adhesion. *J. Biol. Chem.* 262:17294–17298.
- Prenzel, N., E. Zwick, H. Daub, M. Leserer, R. Abraham, C. Wallasch, and A. Ullrich. 1999. EGF receptor transactivation by G-protein-coupled receptors requires metalloproteinase cleavage of proHB-EGF. *Nature*. 402:884–888.
- Prieto, A.L., C. Andersson-Fisone, and K.L. Crossin. 1992. Characterization of multiple adhesive and counteradhesive domains in the extracellular matrix protein cytotactin. *J. Cell Biol.* 119:663–678.
- Pruss, R.M., and H.R. Herschman. 1977. Variants of 3T3 cells lacking mitogenic response to epidermal growth factor. *Proc. Natl. Acad. Sci. USA*. 74:3918–3921.
- Reddy, C.C., S.K. Niyogi, A. Wells, H.S. Wiley, and D.A. Lauffenburger. 1996a. Re-engineering epidermal growth factor for enhanced potency. *Nat. Biotechnol.* 14:1696–1699.
- Reddy, C.C., A. Wells, and D.A. Lauffenburger. 1996b. Receptor-mediated effects on ligand availability influence relative mitogenic potencies of epidermal growth factor and transforming growth factor α . *J. Cell. Physiol.* 166:512–522.
- Schalkwijk, J., P.M. Steijlin, I.M.J.J.v. Vlijmen-Willems, B. Oosterling, E.J. Mackie, and A.A. Verstraeten. 1991. Tenascin expression in human dermis is related to epidermal proliferation. *Am. J. Pathol.* 139:1143–1150.
- Shrivastava, A., C. Radziejewski, E. Campbell, L. Kovac, M. McGlynn, T.E. Ryan, S. Davis, M.P. Goldfarb, D.J. Glass, G. Lemke, and G.D. Yancopoulos. 1997. An orphan receptor tyrosine kinase family whose members serve as nonintegrin collagen receptors. *Mol. Cell*. 1:25–34.
- Sibilia, M., and E.F. Wagner. 1995. Strain dependent epithelial defects in mice lacking the EGF receptor. *Science*. 269:234–238.
- Siegel, G.P., M.-H. Wang, C.A. Rinehart, J.W. Kennedy, L.J. Goodly, Y. Miller, D.G. Kaufman, and R.K. Singh. 1993. Development of a novel human extracellular matrix for quantitation of the invasiveness of human cells. *Cancer Lett.* 69:123–132.
- Sunada, H., B.E. Magun, J. Mendelsohn, and C.L. MacLeod. 1986. Monoclonal antibody against epidermal growth factor receptor is internalized without stimulating receptor phosphorylation. *Proc. Natl. Acad. Sci. USA*. 83:3825–3829.
- Tadaki, D.K., and S.K. Niyogi. 1993. The functional importance of hydrophobicity of the tyrosine at position 13 of human epidermal growth factor in receptor binding. *J. Biol. Chem.* 268:10114–10119.
- Threadgill, D.W., A.A. Dlugosz, L.A. Hansen, T. Tennenbaum, U. Lichti, D. Yee, C. LaMantia, T. Mourton, K. Herrup, R.C. Harris, et al. 1995. Targeted disruption of mouse EGF receptor: effects of genetic background on mutant phenotype. *Science*. 269:230–234.
- Turner, T., P. Chen, L.J. Goodly, and A. Wells. 1996. EGF receptor signaling enhances *in vivo* invasiveness of DU-145 human prostate carcinoma cells. *Clin. Exp. Metastasis*. 14:409–418.
- Vieira, A.V., C. Lamaze, and S.L. Schmid. 1996. Control of EGF receptor signaling by clathrin-mediated endocytosis. *Science*. 274:2086–2089.
- Vogel, W., G.D. Gish, F. Alves, and T. Pawson. 1997. The discoidin domain receptor tyrosine kinases are activated by collagen. *Mol. Cell*. 1:13–23.
- Waters, S.B., D. Chen, A.W. Kao, S. Okada, K.H. Holt, and S.E. Pessin. 1996. Insulin and epidermal growth factor receptors regulate distinct pools of grb2-sos in the control of ras activation. *J. Biol. Chem.* 271:18224–18230.
- Wells, A. 2000. Tumor invasion: role of growth factor-induced cell motility. *Adv. Cancer Res.* 78:31–101.
- Wells, A., J.B. Welsh, C.S. Lazar, H.S. Wiley, G.N. Gill, and M.G. Rosenfeld. 1990. Ligand-induced transformation by a non-internalizing EGF receptor. *Science*. 247:962–964.
- Wells, A., K. Gupta, P. Chang, S. Swindle, A. Glading, and H. Shiraha. 1998. Epidermal growth factor receptor-mediated motility in fibroblasts. *Microsc. Res. Tech.* 43:395–411.
- Welsh, J.B., G.N. Gill, M.G. Rosenfeld, and A. Wells. 1991. A negative feedback loop attenuates EGF-induced morphological changes. *J. Cell Biol.* 114:533–543.
- Whitby, D.J., M.T. Longaker, M.R. Harrison, N.S. Adzick, and M.W.J. Ferguson. 1991. Rapid epithelialisation of fetal wounds is associated with the early deposition of tenascin. *J. Cell Sci.* 99:583–586.
- Xie, H., T. Turner, M.-H. Wang, R.K. Singh, G.P. Siegal, and A. Wells. 1995. In vitro invasiveness of DU-145 human prostate carcinoma cells is modulated by EGF receptor-mediated signals. *Clin. Exp. Metastasis*. 13:407–419.
- Xie, H., M.A. Pallero, K. Gupta, M.F. Ware, P. Chang, W. Witke, D.J. Kwiatkowski, D.A. Lauffenburger, J. Murphy-Ullrich, and A. Wells. 1998. EGF receptor regulation of cell-substratum interactions: EGF-induced disassembly of focal adhesions does not require the motility-associated PLC signaling pathway. *J. Cell Sci.* 111:616–625.
- Yamauchi, T., K. Ueki, K. Tobe, H. Tamemoto, N. Sekine, M. Wada, M. Honjo, M. Takahashi, T. Takahashi, H. Hirai, et al. 1997. Tyrosine phosphorylation of the EGF receptor by the kinase Jak2 is induced by growth hormone. *Nature*. 390:91–96.