

UC Irvine

UC Irvine Previously Published Works

Title

Phase II Trial of Erlotinib during and after Radiotherapy in Children with Newly Diagnosed High-Grade Gliomas.

Permalink

<https://escholarship.org/uc/item/0ms382p2>

Authors

Qaddoumi, Ibrahim

Kocak, Mehmet

Pai Panandiker, Atmaram

et al.

Publication Date

2014

DOI

10.3389/fonc.2014.00067

Copyright Information

This work is made available under the terms of a Creative Commons Attribution License, available at <https://creativecommons.org/licenses/by/4.0/>

Peer reviewed



Phase II trial of erlotinib during and after radiotherapy in children with newly diagnosed high-grade gliomas

Ibrahim Qaddoumi^{1,2*}, Mehmet Kocak^{3†}, Atmaram S. Pai Panandiker⁴, Gregory T. Armstrong⁵, Cynthia Wetmore^{1,2}, John R. Crawford⁶, Tong Lin³, James M. Boyett³, Larry E. Kun⁴, Fredrick A. Boop⁷, Thomas E. Merchant⁴, David W. Ellison⁸, Amar Gajjar^{1,2} and Alberto Broniscer^{1,2}

¹ Department of Oncology, St. Jude Children's Research Hospital, Memphis, TN, USA

² Department of Pediatrics, University of Tennessee Health Sciences Center, Memphis, TN, USA

³ Department of Biostatistics, St. Jude Children's Research Hospital, Memphis, TN, USA

⁴ Department of Radiological Sciences, St. Jude Children's Research Hospital, Memphis, TN, USA

⁵ Department of Epidemiology and Cancer Control, St. Jude Children's Research Hospital, Memphis, TN, USA

⁶ Department of Neurosciences, University of California San Diego, San Diego, CA, USA

⁷ Semmes-Murphey Neurologic and Spine Institute, Memphis, TN, USA

⁸ Department of Pathology, St. Jude Children's Research Hospital, Memphis, TN, USA

Edited by:

Nader Sanai, Barrow Neurological Institute, USA

Reviewed by:

Johan Pallud, University Paris-Descartes, Sainte-Anne Hospital Center, France
Kamalakkannan Palanichamy, The Ohio State University Medical Center, USA

*Correspondence:

Ibrahim Qaddoumi, St. Jude Children's Research Hospital, 262 Danny Thomas Place, Memphis, TN 38105-3678, USA
e-mail: ibrahim.qaddoumi@stjude.org

† Present address:

Mehmet Kocak, Department of Preventive Medicine, University of Tennessee Health Science Center, Memphis, USA

Background: Epidermal growth factor receptor is overexpressed in most pediatric high-grade gliomas (HGG). Since erlotinib had shown activity in adults with HGG, we conducted a phase II trial of erlotinib and local radiotherapy (RT) in children with newly diagnosed HGG.

Methods: Following maximum surgical resection, patients between 3 and 21 years with non-metastatic HGG received local RT at 59.4 Gy (54 Gy for spinal tumors and those with $\geq 70\%$ brain involvement). Erlotinib started on day 1 of RT (120 mg/m² per day) and continued for 2 years unless there was tumor progression or intolerable toxicities. The 2-year progression-free survival (PFS) was estimated for patients with intracranial anaplastic astrocytoma (AA) and glioblastoma (GBM).

Results: Median age at diagnosis for 41 patients with intracranial tumors (21 with GBM and 20 with AA) was 10.9 years (range, 3.3–19 years). The 2-year PFS for patients with AA and GBM was 15 ± 7 and $19 \pm 8\%$, respectively. Only five patients remained alive without tumor progression. Twenty-six patients had at least one grade 3 or 4 toxicity irrespective of association with erlotinib; only four required dose modifications. The main toxicities were gastrointestinal ($n = 11$), dermatologic ($n = 5$), and metabolic ($n = 4$). One patient with gliomatosis cerebri who required prolonged corticosteroids died of septic shock associated with pancreatitis.

Conclusion: Although therapy with erlotinib was mostly well-tolerated, it did not change the poor outcome of our patients. Our results showed that erlotinib is not a promising medication in the treatment of children with intracranial AA and GBM.

Keywords: erlotinib, epidermal growth factor receptor, high-grade glioma, pediatric, phase II, radiotherapy

INTRODUCTION

High-grade gliomas (HGGs) arising outside the brainstem account for 8–12% of all pediatric central nervous system tumors (1). The 5-year survival for children with glioblastoma (GBM) and anaplastic astrocytoma (AA), the most common types of HGGs, remains <15 and $<30\%$, respectively, despite the use of multimodality therapies consisting of maximum surgical resection, radiotherapy (RT), and different regimens of chemotherapy (2–4).

The epidermal growth factor receptor (EGFR) belongs to a family of cell-surface proteins that also includes human epidermal growth factor receptors (HER) 2–4. EGFR is activated by binding to its ligands, leading to autophosphorylation of its intracellular tyrosine kinase domain (5). This autophosphorylation activates a downstream cascade of proteins involved in various cell-survival functions. Activation of EGFR is important for tumor survival and

growth and is associated with poor clinical outcome in different malignancies (5).

Several EGFR inhibitors have been used for treating different types of cancers, including GBM (5–7). Erlotinib (Tarceva™, OSI Pharmaceuticals, Melville, NY, USA; Roche, Basel, Switzerland; and Genentech, South San Francisco, CA, USA) is an orally active, potent, and selective inhibitor of EGFR and HER2 (8). Early studies showed that EGFR amplification is rare in pediatric HGG (9, 10). However, EGFR is overexpressed by immunohistochemistry in 80% of these tumors (11). Preliminary studies showed promising activity of erlotinib against GBM in adult patients (12, 13). In a phase I study of adults with malignant gliomas receiving erlotinib alone or with temozolomide, eight [GBM ($n = 5$), AA ($n = 1$), gemistocytic astrocytoma ($n = 1$), and oligodendroglioma ($n = 1$)] of 57 evaluable patients had a partial response, six of

whom received only erlotinib (12). Of these eight patients, four had a progression-free survival (PFS) of more than 6 months, including three patients with GBM. Also, two patients [GBM ($n = 1$) and AA ($n = 1$)] with no tumor response to therapy had a PFS of ≥ 6 months, including one patient who received only erlotinib.

The preliminary results of clinical trials in adults and the high incidence of EGFR overexpression in pediatric HGGs provided the rationale for conducting a pediatric study using erlotinib to treat children with HGG. Our institution completed a phase I clinical trial, including pharmacokinetic studies, of erlotinib administered during and after RT in children with HGG (14). There were 23 children (12 GBM, 8 AA, and 3 other HGG) treated on our phase I study. The maximum tolerated dose (MTD) of erlotinib was 120 mg/m² per day. Dose limiting toxicities (DLT) in our phase I study were grade 3 diarrhea despite supportive care ($n = 1$ at MTD level), grade 3 increase in serum lipase concomitant with abdominal pain, and grade 3 intolerable skin rash associated with pruritus. The latter two DLT occurred at dose level of 160 mg/m² per day. Use of erlotinib for at least 6 months ($n = 18$) and 12 months ($n = 12$) was well-tolerated with chronic toxicities such as grade 1–3 indirect hyperbilirubinemia, grade 1–3 hypokalemia and hypophosphatemia, and grade 1–3 lymphopenia. Also, one of our patients on the phase I study developed a second neoplasm (rhabdomyosarcoma) outside the radiation field within 6 months of therapy.

We present the results of the phase II study combining RT and erlotinib in children with newly diagnosed, intracranial GBM and AA. Although the outcomes of our patients were not better than those reported in previous clinical trials, our results are relevant since EGFR-targeting agents alone or in combination, particularly erlotinib, continue to be tested in several recent clinical trials on pediatric HGG.

PATIENTS AND METHODS

Patients aged 3–21 years with non-metastatic, newly diagnosed HGG or unfavorable low-grade glioma were eligible for this phase II trial (NCT00124657). Unfavorable low-grade gliomas were defined as World Health Organization grade II gliomas with the radiologic diagnosis of gliomatosis cerebri or bithalamic involvement. However, only data from patients with intracranial GBM or AA were included in the analysis of PFS and overall survival (OS). Except for one case, all tumors were centrally reviewed at St. Jude Children's Research Hospital (St. Jude). Five patients (four with GBM and one with AA) were previously treated at the MTD during the phase I study (14); these patients met the eligibility criteria for the phase II study and were included in this analysis.

Additional eligibility criteria included an interval of ≤ 42 days between surgery and start of therapy; a performance score ≥ 40 and adequate organ functions (absolute neutrophil count $\geq 1000/\mu\text{L}$, platelet count $\geq 100,000/\mu\text{L}$, hemoglobin concentration ≥ 8 g/dL, serum creatinine concentration less than twice the institutional normal values for age, total bilirubin < 1.5 times the upper limit of normal, alanine aminotransferase < 5 times the institutional upper limit of normal, and albumin ≥ 2 g/dL). Exclusion criteria included diagnosis of diffuse intrinsic pontine glioma, diagnosis of radiation induced HGG, use of enzyme-inducing anticonvulsants,

use of other concomitant anticancer treatments, presence of other significant medical problems, and pregnancy or lactation.

The institutional review boards (IRBs) at St. Jude and Rady Children's Hospital approved the study before initial patient enrollment, and a written informed consent (or assent when appropriate) was obtained from patients or their legal guardians.

STUDY DESIGN AND TREATMENT PLAN

Patients from St. Jude and Rady Children's Hospital were enrolled on the study. Following maximum surgical resection, eligible patients received 59.4 Gy local RT administered at a dose of 1.8 Gy per fraction, 5 days per week for 6.5 weeks. The treatment volume encompassed the entire tumor defined on preoperative imaging by the combination of T1, T2-weighted, and FLAIR sequences, a 2-cm margin to account for microscopic disease, and a 0.3- to 0.5-cm margin to account for uncertainty in immobilization and patients' positioning. The prescribed RT dose was limited to 54 Gy when the required target volume included $\geq 70\%$ of the whole brain and in patients with spinal tumors.

Since the degree of surgical resection is a major prognostic factor for children with HGG (2), achieving a gross or near-total resection was attempted whenever possible even if more than one surgical procedure was required. Gross total resection was defined as no visible tumor left based on imaging and operative report, and near-total resection was identified as removal of $> 90\%$ but $< 100\%$ of the tumor. Subtotal and partial resections were defined as resection of 50–89 and 10–49% of the tumor, respectively. Biopsies were defined as $< 10\%$ of tumor resection.

Erlotinib was initiated on the first day of RT at the phase II recommended dose of 120 mg/m² per day (maximum dose 200 mg per day) (14). Patients received erlotinib for 26 courses (2 years) without interruption unless there was tumor progression or intolerable toxicities. Each course of erlotinib lasted 28 days.

Table 1 provides the recommendations for dose modifications in case of significant toxicities. All adverse events were graded according to the National Cancer Institute Common Terminology Criteria for Adverse Events (CTCAE) version 3.0. Clinical and radiologic evaluations were similar to those used in the phase I trial (14).

Progression-free survival was defined as the interval between the start of treatment and initial failure, including clinical or radiologic progression, or death from any cause. OS was defined as the interval between the start of treatment and death. Progressive disease (PD) was defined as worsening neurologic status not explained by causes unrelated to tumor progression, or a greater than 25% increase in the product of the maximum perpendicular diameters of any lesions, or increasing doses of corticosteroids required to maintain stable neurologic status.

STATISTICAL CONSIDERATIONS

The primary objective of the current trial was to estimate the PFS for patients with intracranial AA and GBM by the Kaplan–Meier method. The “intent-to-treat” principle was followed, and all eligible patients who received any treatment were included in the analyses. The sequential probability ratio test (SPRT) was used to monitor PFS independently for patients with AA and GBM in order to halt accrual within each stratum as soon as statistical

Table 1 | Recommended dose modifications in the phase II study.

Toxicity	Action at first occurrence	Action at recurrence	Grounds for drug discontinuation
Non-hematologic grade 2 (except skin rash and diarrhea) ^a	Hold erlotinib until resolution to \leq grade 1; restart at 90 mg/m ² per day	If grade 2, hold erlotinib until resolution to \leq grade 1; restart at 70 mg/m ² per day	If recurrent grade 2 toxicity after two dose reductions
Diarrhea and/or skin rash grade 2	Supportive care only; hold erlotinib and restart at 90 mg/m ² per day if duration >7 days and toxicity intolerable	Supportive care only; hold erlotinib and restart at 70 mg/m ² per day if duration >7 days and toxicity intolerable	If recurrent grade 2 intolerable toxicity lasting >7 days after 2 dose reductions
Non-hematologic grade 3 ^b	Hold erlotinib until resolution to \leq grade 2; restart erlotinib at 90 mg/m ² per day if resolution \leq 7 days. Discontinue erlotinib if grade 3 toxicity persists for >7 days	Discontinue erlotinib if recurrent grade 3 toxicity occurs after 1 dose reduction	If grade 3 toxicity lasts >7 days or if grade 3 toxicity recurs after one dose reduction
Transaminase grade 3 (lasting >7 days)	Hold erlotinib until resolution to \leq grade 1; resume at 90 mg/m ² per day	Discontinue erlotinib if recurrent grade 3 toxicity lasts >7 days	If recurrent grade 3 toxicity lasts >7 days
Non-hematologic grade 4 ^c	Discontinue erlotinib		
Interstitial lung disease	If suspected, hold erlotinib until disease is ruled out or improved		

Since hematologic toxicities were not expected with erlotinib, the protocol mandated that the PI to be contacted for grade 3 and 4 hematologic toxicities, prior any holding of modifying the erlotinib dose.

^aNot attributable to another cause and severe enough to warrant treatment discontinuation.

^bExcluding weight gain or loss, diarrhea for \leq 48 h not given optimal supportive therapy, tolerable skin rash, fever or non-neutropenic infection, nausea, and vomiting for \leq 48 h not given optimal supportive therapy, seizures, elevation of transaminases that resolves to \leq grade 1 within 7 days of discontinuing the drug, or electrolyte abnormalities that resolve to \leq grade 2 within 7 days with or without clinical intervention.

^cExcluding grade 4 electrolyte abnormalities that resolve to \leq grade 2 within 7 days with or without clinical intervention.

confidence developed that the treatment regimen was not meeting efficacy expectations (15). The SPRT monitoring design for each stratum was based on type 1 and type 2 error rates of 0.10, and monitoring did not begin until five failures had been observed. The fully sequential monitoring rule for patients with AA was based on comparing true and unknown 2-year PFS rates of 25 versus 45%, respectively. The monitoring criteria for patients with GBM were based on comparing true and unknown 2-year PFS rates of 10 versus 25%, respectively. The maximum expected accrual was 29 patients with AA and 30 with GBM. Futility analyses closed accrual for patients with AA and GBM after the 14th and 16th failures, respectively. At that point, 20 patients with AA and 21 with GBM had been accrued to this study. The Fisher's exact test was used to examine the correlation between dexamethasone use and lymphopenia.

RESULTS

PATIENTS' CHARACTERISTICS

Thirty-nine patients were enrolled on the phase II study between August 2007 and November 2010. Five additional patients treated at the MTD during the phase I trial were incorporated into the current analysis (14). Overall, 20 patients had AA, 21 had GBM, one had anaplastic oligoastrocytoma, one had unfavorable fibrillary astrocytoma, and one had spinal GBM. All patients underwent complete imaging evaluation of the neuraxis before the start of therapy, which showed no evidence of metastatic disease. All 44 patients were included for evaluation of toxicity profiles.

Forty-three patients were treated at St. Jude and one at Rady Children's Hospital.

Table 2 provides the characteristics of 41 patients with intracranial AA and GBM who were eligible for PFS estimation. Thirteen (32%) of these 41 patients had gliomatosis cerebri ($n = 7$; five with AA and two with GBM) or bithalamic tumors ($n = 6$; five with AA and one with GBM).

OUTCOMES

After excluding the three non-intracranial GBM or AA cases (one anaplastic oligoastrocytoma, one unfavorable fibrillary astrocytoma, and one spinal GBM), the 2-year PFS was 15 ± 7 and $19 \pm 8\%$ for patients with intracranial AA and GBM, respectively (**Figure 1**). The 2-year OS for patients with AA and GBM was 20 ± 8 and $19 \pm 8\%$, respectively. The 5-year PFS was 15 ± 8 and $9.5 \pm 9\%$ for patients with AA and GBM, respectively. The 5-year OS for patients with AA and GBM was 15 ± 10 and $14 \pm 13\%$, respectively. The median PFS for patients with AA and for GBM was 10.7 and 6.3 months, respectively. The median OS for patients with AA and GBM was 15.4 and 11.7 months, respectively.

Two patients died while on study, one each from disease progression and toxicity. The median follow-up for these 41 patients was 13.5 months (range, 1.8–66.5 months).

Thirty-five of 41 patients died (17 AA, 18 GBM), all except one due to disease progression. Five patients (three with AA, two with GBM) remain alive without experiencing disease progression. The median duration of follow-up for these five patients was

Table 2 | Patients' characteristics.

Characteristic	All patients (n = 41)	AA (n = 20)	GBM (n = 21)
AGE AT DIAGNOSIS (YEARS)			
Median	10.9	11.8	8.9
Range	3.3–19	3.6–19	3.3–16.6
LENGTH OF FOLLOW-UP (MONTHS)^a			
Median	13.5	16.0	11.7
Range	1.8–66.5	3.9–66.5	1.8–54.8
SEX			
Female	24	11	13
Male	17	9	8
RACE			
White	30	15	15
Black	7	4	3
Other	4	1	3
ETHNICITY			
Non-Hispanic	37	18	19
Hispanic	4 ^b	2	2
LOCATION			
Cerebrum	22	10	12
Cerebellum	5	1	4
Thalamus	13	9	4
Pineal	1	0	1
EXTENT OF RESECTION			
Gross/near-total	10	4	6
Subtotal	12	3	9
Partial/biopsy	19	13	6

AA, anaplastic astrocytoma; GBM, glioblastoma multiforme.

^aDefined as last contact.

^bIncluded one of each of the following: Cuban, Mexican, Central/South American, and Spanish not other was specified.

55 months (range, 43–66.5 months), of whom three underwent a gross total resection (two with AA and one with GBM), one a subtotal resection (AA), and one a biopsy only (GBM). Two of these five patients discontinued erlotinib due to non-compliance after less than 1 and 12 courses of therapy, respectively. One patient with intracranial GBM who remains alive experienced disease progression 54 months after diagnosis.

PROGRESSIVE DISEASE CHARACTERISTICS

Of 35 patients who developed PD, 25 had local progression only, five experienced metastatic failures (three in the spine and two in distant locations within the brain), and five had both local and metastatic PD. Metastatic disease in patients with mixed PD was ventricular ($n = 3$), spinal ($n = 1$), and cerebellar ($n = 1$).

TOXICITIES

Twenty-six (59%) of 44 patients developed at least one grade 3 or 4 toxicity irrespective of attribution to erlotinib. Patients received a median of nine courses of chemotherapy (range 1–33). One of the five patients enrolled on the phase I study received 33 courses of chemotherapy since treatment duration was extended for 3 years in the phase I trial (14). The dose of erlotinib was reduced six times in four patients (dose reduction required twice in two patients) due to grade 3 or 4 non-hematologic toxicities (gastrointestinal and dermatologic in three instances each). Treatment with erlotinib was discontinued because of PD ($n = 32$), non-compliance ($n = 4$), or toxicity ($n = 1$). The four non-compliant patients received less than one course ($n = 1$), six courses ($n = 2$), and 12 courses ($n = 1$) of erlotinib. Seven patients tolerated erlotinib well and completed the planned therapy. **Table 3** summarizes the toxicities in patients.

The only treatment-related mortality occurred in a 12.9-year-old African-American female with extensive gliomatosis cerebri (AA) who was on chronic use of corticosteroids for 44 weeks

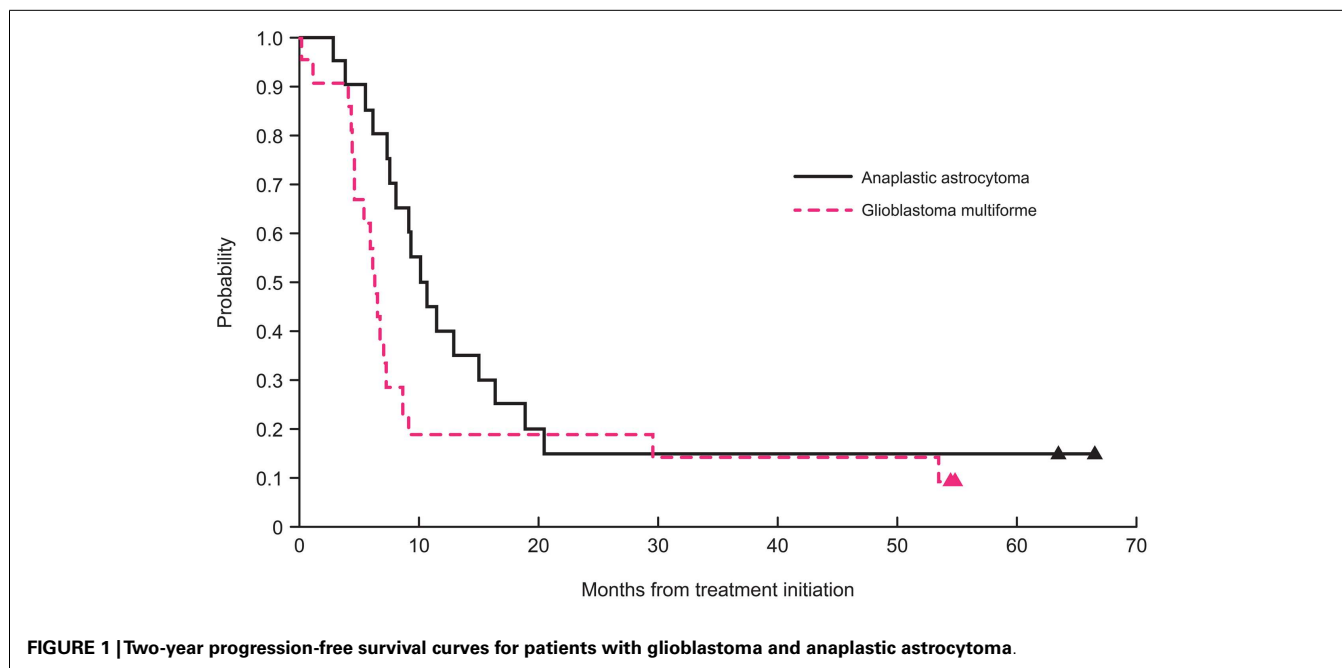


FIGURE 1 | Two-year progression-free survival curves for patients with glioblastoma and anaplastic astrocytoma.

Table 3 | Toxicity profiles of the study cohort irrespective of attribution to erlotinib.

Category	Toxicity description	Toxicity grade		Distinct patients for each category
		Grade 3	Grade 4	
Blood	Hemoglobin	2	1	18
	Lymphopenia ^a	7	9	
	Neutrophils	2	1	
	Platelets	–	1	
Dermatologic	Pruritus	3	–	5
	Rash/desquamation	1	–	
	Rash/acne	2	–	
Gastrointestinal	Anorexia	3	–	11
	Diarrhea	5	–	
	Dysphagia	1	–	
	Mucositis	1	–	
	Nausea	2	–	
	Vomiting	4	–	
Metabolic	ALT/AST	2	–	4
	Hypokalemia	2	–	
	Bilirubin	1	–	
Pain ^b	Headache	1	1	2
Constitutional	Fatigue	1	–	3
	Weight loss	2	–	
Total distinct number of patients				26

^aEight of the 16 patients with lymphopenia received dexamethasone within 4 weeks of the recorded toxicity.

^bThere was a documented progressive disease within 3 days of the recorded headache.

(30 weeks before study enrollment). Erlotinib was held in this patient after 73 days of treatment because of diarrhea. Three days later, laboratory tests and imaging confirmed pancreatitis. Peak serum levels of lipase and amylase were 892 units/L (grade 4 toxicity) and 375 units/L (grade 3 toxicity), respectively. Her lowest total and ionized calcium concentrations were 6.9 and 1.1 mmol/L, respectively. Her peak total and direct bilirubin concentrations were 8.9 and 6.2 mg/dL, respectively. She also developed a wound infection at the craniotomy site. She subsequently developed septic shock and died 99 days after the start of therapy. An autopsy was not performed. It was impossible to determine the exact cause of the septic shock in this patient, but we believe that the pancreatitis was the main contributing factor.

DISCUSSION

Unlike for adults with HGG (16), no chemotherapy regimen is considered part of standard care for children with newly diagnosed HGG in North America. When our phase II trial was designed, temozolomide during and/or after local RT did not improve the outcome of children with AA and GBM (3, 4). The failure of

temozolomide to improve the outcome of children with HGG, the common overexpression of EGFR in pediatric HGG, and the preliminary promising activity of erlotinib against recurrent GBM in adults prompted us to conduct this trial (3, 4, 11–13).

We showed that the use of erlotinib during and after RT did not improve the poor outcome of children with newly diagnosed intracranial AA and GBM. Although five patients were long-term survivors and free of tumor progression, including one who received less than 1 course of erlotinib, the majority had at least one characteristic at diagnosis associated with a better outcome (e.g., the diagnosis of AA and the presence of no residual disease at the start of therapy). On the other hand, a large majority of our 41 patients had poor prognostic factors before the start of therapy, including less than a gross total/near-total resection (76%), presence of gliomatosis cerebri (17%), or tumors arising from one (17%) or both thalami (15%) (17, 18). Interestingly, the majority of the gliomatosis cerebri cases (5 of 7) and bithalamic tumors (5 of 6) were patients with AA tumors, and this could explain the similar outcome to GBM patients in our cohort.

Three phase I trials reported the safety, pharmacokinetics, and MTD of erlotinib alone or in combination in children with newly diagnosed or progressive/recurrent brain and solid tumors (14, 19, 20). In one study, two patients, one with a malignant glioma and one with an anaplastic oligoastrocytoma, experienced a 44 and 47% tumor regression after therapy with erlotinib alone, respectively (20).

Similar to our phase I trial (14), we incorporated detailed, optional plasma pharmacokinetic analysis in the current study. Unfortunately, adherence to these studies was very low in the phase II trial, which precluded any meaningful analysis.

Erlotinib was in general well-tolerated by our patients. Only four (9%) patients required dose modification due to toxicities, specifically significant diarrhea and skin rash. Other grade 3 and 4 toxicities were uncommon and were mainly pruritus, anorexia with weight loss, nausea, and vomiting, indirect hyperbilirubinemia, increase in liver function tests, and hypokalemia. These toxicities were very similar to those described in both phase II adult and phase I pediatric trials using erlotinib as a single agent (14, 19–22). To explain the high rate of lymphopenia in our study, we examined the correlation between the use of dexamethasone and onset of lymphopenia. One patient who was treated outside of St. Jude was not included in the analysis due to lack of dexamethasone information. There were 16 patients who had at least one episode of grade 3/4 lymphopenia in this study. Eight of them (8/16, 50%) received dexamethasone as concomitant treatment. Among the other 27 patients, 9 of them (9/27, 33%) received dexamethasone. The Fisher's exact test has p -value = 0.34. The concomitant use of dexamethasone might promote the development of lymphopenia in some of the patients, but in general, we do not have sufficient evidence to say it is associated with lymphopenia in this cohort.

Although one patient died of septic shock, both the chronic use of steroids and the pancreatitis that preceded this event likely contributed to her death. Interestingly, one patient who received erlotinib at 160 mg/m² developed a grade 3 increase in serum lipase without radiologic findings suggestive of pancreatitis in the phase I study (14). There is only one report of fatal pancreatitis in a 46-year-old patient with non-small-cell lung cancer receiving

erlotinib (23). However, in that case erlotinib was combined with sunitinib, which is reported to cause grade 3 and 4 increases in serum amylase and lipase in 5 and 16% of adult patients with renal carcinoma, respectively (24).

Several studies in adults with GBM suggested that specific tumor markers are associated with a better response to small-molecule inhibitors of EGFR, including erlotinib (13, 25). Although a recent study showed a slightly higher occurrence of *EGFR* amplification and/or mutations in children with HGG (26), larger recent genome-wide molecular analyses demonstrated that these changes occur in only a few cases (27, 28). Although we performed extensive molecular analysis in the phase I study (14), we did not perform these studies in the current trial because of the poor outcome of patients. Likewise, a more recent randomized clinical trial in adults with progressive GBM showed that erlotinib less effective than temozolomide and lomustine (21).

In summary, similar to previous studies using other chemotherapy regimens, we showed that the use of erlotinib during and after local RT did not change the poor outcome of children with intracranial AA and GBM. The advances made in elucidating the molecular mechanisms regulating the genesis of pediatric HGG (27–29) will hopefully lead to the use of targeted therapies that are more suitable to the biologic characteristics of these cancers.

ACKNOWLEDGMENTS

The authors thank Betsy Williford for help with the illustrations and Vani Shanker for editing the manuscript. This work was presented in part at the 15th International Symposium of Pediatric Neuro-Oncology (ISPNO) June 24–27, 2012, Toronto, Canada. Funding: this work was supported in part by the National Institutes of Health Cancer Center Support (Core) grant P30 CA021765; by OSI Pharmaceuticals Inc.; by Genentech Inc.; and by the American Lebanese Syrian Associated Charities (ALSAC).

REFERENCES

- Broniscer A, Gajjar A. Supratentorial high-grade astrocytoma and diffuse brainstem glioma: two challenges for the pediatric oncologist. *Oncologist* (2004) 9:196–7. doi:10.1634/theoncologist.9-2-197
- Finlay JL, Boyett JM, Yates AJ, Wisoff JH, Milstein JM, Geyer JR, et al. Randomized phase III trial in childhood high-grade astrocytoma comparing vincristine, lomustine, and prednisone with the eight-drugs-in-1-day regimen. Children's Cancer Group. *J Clin Oncol* (1995) 13:112–23.
- Broniscer A, Chintagumpala M, Fouladi M, Krasin MJ, Kocak M, Bowers DC, et al. Temozolomide after radiotherapy for newly diagnosed high-grade glioma and unfavorable low-grade glioma in children. *J Neurooncol* (2006) 76:313–9. doi:10.1007/s11060-005-7409-5
- Cohen KJ, Pollack IF, Zhou T, Buxton A, Holmes EJ, Burger PC, et al. Temozolomide in the treatment of high-grade gliomas in children: a report from the Children's Oncology Group. *Neuro Oncol* (2011) 13:317–23. doi:10.1093/neuonc/nuq191
- Salomon DS, Brandt R, Ciardiello F, Normanno N. Epidermal growth factor-related peptides and their receptors in human malignancies. *Crit Rev Oncol Hematol* (1995) 19:132–83. doi:10.1016/1040-8428(94)00144-I
- Raizer JJ. HER1/EGFR tyrosine kinase inhibitors for the treatment of glioblastoma multiforme. *J Neurooncol* (2005) 74:76–7. doi:10.1007/s11060-005-0603-7
- Dhomen NS, Mariadason J, Tebbutt N, Scott AM. Therapeutic targeting of the epidermal growth factor receptor in human cancer. *Crit Rev Oncog* (2012) 17:31–50. doi:10.1615/CritRevOncog.v17.i1.40
- Norman P. OSI-774 OSI Pharmaceuticals. *Curr Opin Investig Drugs* (2001) 2:298–304.
- Sung T, Miller DC, Hayes RL, Alonso M, Yee H, Newcomb EW. Preferential inactivation of the p53 tumor suppressor pathway and lack of EGFR amplification distinguish de novo high grade pediatric astrocytomas from de novo adult astrocytomas. *Brain Pathol* (2000) 10:249–59. doi:10.1111/j.1750-3639.2000.tb00258.x
- Pollack IF, Hamilton RL, James CD, Finkelstein SD, Burnham J, Yates AJ, et al. Rarity of PTEN deletions and EGFR amplification in malignant gliomas of childhood: results from the Children's Cancer Group 945 cohort. *J Neurosurg* (2006) 105(5 Suppl):418–24. doi:10.3171/ped.2006.105.5.418
- Bredel M, Pollack IF, Hamilton RL, James CD. Epidermal growth factor receptor expression and gene amplification in high-grade non-brainstem gliomas of childhood. *Clin Cancer Res* (1999) 5:1786–92.
- Prados MD, Lamborn KR, Chang S, Burton E, Butowski N, Malec M, et al. Phase I study of erlotinib HCl alone and combined with temozolomide in patients with stable or recurrent malignant glioma. *Neuro Oncol* (2006) 8:67–8. doi:10.1215/S1522851705000451
- Mellinghoff IK, Wang MY, Vivanco I, Haas-Kogan DA, Zhu S, Dia EQ, et al. Molecular determinants of the response of glioblastomas to EGFR kinase inhibitors. *N Engl J Med* (2005) 353:2012–24. doi:10.1056/NEJMoa051918
- Broniscer A, Baker SJ, Stewart CF, Merchant TE, Laningham FH, Schaquevich P, et al. Phase I and pharmacokinetic studies of erlotinib administered concurrently with radiotherapy for children, adolescents, and young adults with high-grade glioma. *Clin Cancer Res* (2009) 15:701–7. doi:10.1158/1078-0432.CCR-08-1923
- Piantadosi S. *Clinical Trials: A Methodologic Perspective*. Wiley Series in Probability and Statistics. New Jersey: John Wiley & Sons, Inc (1997). 238 p.
- Stupp R, Mason WP, van den Bent MJ, Weller M, Fisher B, Taphoorn MJ, et al. Radiotherapy plus concomitant and adjuvant temozolomide for glioblastoma. *N Engl J Med* (2005) 352:987–96. doi:10.1056/NEJMoa043330
- Armstrong GT, Phillips PC, Rorke-Adams LB, Judkins AR, Localio AR, Fisher MJ. Gliomatosis cerebri: 20 years of experience at the Children's Hospital of Philadelphia. *Cancer* (2006) 107:1597–606. doi:10.1002/cncr.22210
- Kramm CM, Butenhoff S, Rausche U, Warmuth-Metz M, Kortmann RD, Pietsch T, et al. Thalamic high-grade gliomas in children: a distinct clinical subset? *Neuro Oncol* (2011) 13:680–9. doi:10.1093/neuonc/nor045
- Jakacki RI, Hamilton M, Gilbertson RJ, Blaney SM, Tersak J, Krailo MD, et al. Pediatric phase I and pharmacokinetic study of erlotinib followed by the combination of erlotinib and temozolomide: a Children's Oncology Group Phase I Consortium Study. *J Clin Oncol* (2008) 26:4921–7. doi:10.1200/JCO.2007.15.2306
- Geogger B, Hargrave D, Thomas F, Ndiaye A, Frappaz D, Andreiulo F, et al. Innovative therapies for children with cancer: pediatric phase I study of erlotinib in brainstem glioma and relapsing/refractory brain tumors. *Neuro Oncol* (2011) 13:109–18. doi:10.1093/neuonc/nuq141
- van den Bent MJ, Brandes AA, Rampling R, Kouwenhoven MC, Kros JM, Carpenter AF, et al. Randomized phase II trial of erlotinib versus temozolomide or carmustine in recurrent glioblastoma: EORTC brain tumor group study 26034. *J Clin Oncol* (2009) 27:1268–74. doi:10.1200/JCO.2008.17.5984
- Raizer JJ, Abrey LE, Lassman AB, Chang SM, Lamborn KR, Kuhn JG, et al. A phase II trial of erlotinib in patients with recurrent malignant gliomas and nonprogressive glioblastoma multiforme post radiation therapy. *Neuro Oncol* (2010) 12:93–5. doi:10.1093/neuonc/nop017
- Ruinemans GM, Balemans C, Mattijssen V, Wiersma-van Tilburg AJ, Smit HJ. Fatal necrotizing pancreatitis during combined treatment with erlotinib and sunitinib. *Lung Cancer* (2010) 70:364–5. doi:10.1016/j.lungcan.2010.08.004
- Motzer RJ, Hutson TE, Tomczak P, Michaelson RD, Bukowski RM, Rixe O, et al. Sunitinib versus interferon alfa in metastatic renal-cell carcinoma. *N Engl J Med* (2007) 356:115–24. doi:10.1056/NEJMoa065044
- Haas-Kogan DA, Prados MD, Tihan T, Eberhard DA, Jelluma N, Arvold ND, et al. Epidermal growth factor receptor, protein kinase B/Akt, and glioma response to erlotinib. *J Natl Cancer Inst* (2005) 97:880–7. doi:10.1093/jnci/dji161
- Bax DA, Gaspar N, Little SE, Marshall L, Perryman L, Regairaz M, et al. EGFRvIII deletion mutations in pediatric high-grade glioma and response to targeted therapy in pediatric glioma cell lines. *Clin Cancer Res* (2009) 15:5753–61. doi:10.1158/1078-0432.CCR-08-3210
- Paugh BS, Qu C, Jones C, Liu Z, Adamowicz-Brice M, Zhang J, et al. Integrated molecular genetic profiling of pediatric high-grade gliomas reveals key differences with the adult disease. *J Clin Oncol* (2010) 28:3061–8. doi:10.1200/JCO.2009.26.7252

28. Schwartzenuber J, Korshunov A, Liu XY, Jones DT, Pfaff E, Jacob K, et al. Driver mutations in histone H3.3 and chromatin remodelling genes in paediatric glioblastoma. *Nature* (2012) **482**:226–31. doi:10.1038/nature10833
29. Wu G, Broniscer A, McEachron TA, Lu C, Paugh BS, Becksfors J, et al. St. Jude Children's Research Hospital–Washington University Pediatric Cancer Genome Project. Somatic histone H3 alterations in pediatric diffuse intrinsic pontine gliomas and non-brainstem glioblastomas. *Nat Genet* (2012) **44**:251–3. doi:10.1038/ng.1102

Conflict of Interest Statement: All study medications were provided by OSI Pharmaceuticals Inc. and Genentech Inc. Dr. Alberto Broniscer received partial financial support from OSI Pharmaceuticals Inc. and Genentech Inc. to conduct this study. The other co-authors reports no conflicts of interest.

Received: 02 January 2014; accepted: 19 March 2014; published online: 01 April 2014.

Citation: Qaddoumi I, Kocak M, Pai Panandiker AS, Armstrong GT, Wetmore C, Crawford JR, Lin T, Boyett JM, Kun LE, Boop FA, Merchant TE, Ellison DW, Gajjar A and Broniscer A (2014) Phase II trial of erlotinib during and after radiotherapy in children with newly diagnosed high-grade gliomas. *Front. Oncol.* **4**:67. doi: 10.3389/fonc.2014.00067

This article was submitted to *Neuro-Oncology*, a section of the journal *Frontiers in Oncology*.

Copyright © 2014 Qaddoumi, Kocak, Pai Panandiker, Armstrong, Wetmore, Crawford, Lin, Boyett, Kun, Boop, Merchant, Ellison, Gajjar and Broniscer. This is an open-access article distributed under the terms of the Creative Commons Attribution License (CC BY). The use, distribution or reproduction in other forums is permitted, provided the original author(s) or licensor are credited and that the original publication in this journal is cited, in accordance with accepted academic practice. No use, distribution or reproduction is permitted which does not comply with these terms.