

UC Davis

UC Davis Previously Published Works

Title

Phylogenetic analysis of mammalian maximal oxygen consumption during exercise

Permalink

<https://escholarship.org/uc/item/0jh1v95b>

Journal

Journal of Experimental Biology, 216(24)

ISSN

0022-0949

Authors

Dlugosz, Elizabeth M
Chappell, Mark A
Meek, Thomas H
[et al.](#)

Publication Date

2013-12-15

DOI

10.1242/jeb.088914

Peer reviewed

RESEARCH ARTICLE

Phylogenetic analysis of mammalian maximal oxygen consumption during exercise

Elizabeth M. Dlugosz^{1,*}, Mark A. Chappell¹, Thomas H. Meek^{1,†}, Paulina A. Szafrńska², Karol Zub², Marek Konarzewski^{2,3}, James H. Jones⁴, J. Eduardo P. W. Bicudo⁵, Roberto F. Nespolo⁶, Vincent Careau^{1,‡} and Theodore Garland, Jr^{1,§}

¹Department of Biology, University of California, Riverside, CA 92521, USA, ²Mammal Research Institute, Polish Academy of Sciences, Waszkiewicza 1, 17-230 Białowieża, Poland, ³Institute of Biology, University of Białystok, 15-950 Białystok, Poland, ⁴Department of Surgical and Radiological Sciences, School of Veterinary Medicine, University of California, Davis, CA 95616, USA,

⁵Departamento de Fisiologia, Instituto de Biociências, Universidade de São Paulo, 05508-900 São Paulo, SP, Brazil and

⁶Instituto de Ciencias Ambientales y Evolutivas, Universidad Austral de Chile, Casilla 567, Valdivia, Chile

*Present address: Mitrani Department of Desert Ecology, The Jacob Blaustein Institutes for Desert Research, Ben-Gurion University of the Negev, 84990 Midreshet Ben-Gurion, Israel

†Present address: Diabetes and Obesity Center of Excellence, Department of Medicine, University of Washington, Seattle, WA 98109, USA

‡Present address: Centre for Integrative Ecology, School of Life and Environmental Science, Deakin University, 75 Pigdons Road, Waurn Ponds, VIC 3216, Australia

§Author for correspondence (tgarland@ucr.edu)

SUMMARY

We compiled published values of mammalian maximum oxygen consumption during exercise ($\dot{V}_{O_{2,max}}$) and supplemented these data with new measurements of $\dot{V}_{O_{2,max}}$ for the largest rodent (capybara), 20 species of smaller-bodied rodents, two species of weasels and one small marsupial. Many of the new data were obtained with running-wheel respirometers instead of the treadmill systems used in most previous measurements of mammalian $\dot{V}_{O_{2,max}}$. We used both conventional and phylogenetically informed allometric regression models to analyze $\dot{V}_{O_{2,max}}$ of 77 ‘species’ (including subspecies or separate populations within species) in relation to body size, phylogeny, diet and measurement method. Both body mass and allometrically mass-corrected $\dot{V}_{O_{2,max}}$ showed highly significant phylogenetic signals (i.e. related species tended to resemble each other). The Akaike information criterion corrected for sample size was used to compare 27 candidate models predicting $\dot{V}_{O_{2,max}}$ (all of which included body mass). In addition to mass, the two best-fitting models (cumulative Akaike weight=0.93) included dummy variables coding for three species previously shown to have high $\dot{V}_{O_{2,max}}$ (pronghorn, horse and a bat), and incorporated a transformation of the phylogenetic branch lengths under an Ornstein–Uhlenbeck model of residual variation (thus indicating phylogenetic signal in the residuals). We found no statistical difference between wheel- and treadmill-elicited values, and diet had no predictive ability for $\dot{V}_{O_{2,max}}$. Averaged across all models, the allometric scaling exponent was 0.839, with 95% confidence limits of 0.795 and 0.883, which does not provide support for a scaling exponent of 0.67, 0.75 or unity.

Supplementary material available online at <http://jeb.biologists.org/lookup/suppl/doi:10.1242/jeb.088914/-/DC1>

Received 28 March 2013; Accepted 3 September 2013

Key words: allometry, comparative method, exercise, locomotion, mammals, maximum oxygen consumption, phylogeny, $\dot{V}_{O_{2,max}}$.

INTRODUCTION

The scaling of mammalian energy metabolism to body size has been a subject of scientific study for more than a century (Rubner, 1883) (for reviews, see Schmidt-Nielsen, 1975; Savage et al., 2004), and that history has included considerable controversy over both the scaling relationship *per se* and its mechanistic causality. In mammals, the range of metabolic measures is generally bracketed by basal metabolic rate (BMR) at the lower limit (Lovegrove, 2006) and maximum oxygen consumption elicited during whole-body exercise ($\dot{V}_{O_{2,max}}$) at the upper limit (Seeherman et al., 1981; Jones and Lindstedt, 1993; Levine, 2008; Hillman et al., 2012; Spurway et al., 2012). Although $\dot{V}_{O_{2,max}}$ is not a measure of locomotor performance *per se* (Careau and Garland, 2012), it does set an upper limit to the intensity of work that can be sustained aerobically, and hence might often be subject to natural or sexual selection in the wild.

Across a wide range of mammalian diversity, it is clear that body mass (M_b) is the most important ‘global’ factor affecting

physiological traits in general and metabolic rates in particular. M_b and metabolic rate scale non-linearly in good accord with a power function: metabolism = $a \times M_b^X$, where X is commonly referred to as the allometric scaling exponent. For many decades the allometry of BMR and $\dot{V}_{O_{2,max}}$ has sparked enormous interest and been much debated. Originally, a scaling exponent of 0.67 was suggested for the relationship between BMR and M_b , based on a comparison of domestic dogs of various sizes (Rubner, 1883). Scaling to $M_b^{0.67}$ has also been proposed as theoretically appropriate given the geometry of surface–volume relationships, a concept often termed ‘geometric similarity’ (Heusner, 1985). Kleiber’s analysis of an interspecific data set including birds and mammals pointed to a scaling exponent of $\sim 3/4$ for BMR (Kleiber, 1932). Since that pioneering paper, numerous other studies have suggested a scaling exponent of 0.75 (referred to by some as the ‘universal scaling exponent’) for metabolic traits. The emphasis on ‘three-quarter’ power scaling has been based on empirical findings, consideration

of how surface areas and body composition change with body size, biomechanical ‘elastic similarity’ concepts and, most recently, mathematical modeling of the fractal nature of nutrient distribution ‘trees’ (Kleiber, 1932; McMahon, 1973; Weibel et al., 1991; Weibel et al., 1992; Weibel et al., 2004; West et al., 1997; Savage et al., 2004). Most of this work (particularly empirical testing of scaling theory) has focused on BMR or resting metabolic rate (RMR).

The maximal aerobic performance limit represented by $\dot{V}_{O_{2,max}}$ has been less systematically examined, in part because its measurement often entails considerable technical challenges (see Thomas and Suthers, 1972; Seeherman et al., 1981) and hence the dataset is considerably smaller than that for BMR or RMR. Nevertheless, several studies have found that mammalian $\dot{V}_{O_{2,max}}$ scaling deviates from the ‘universal’ 0.75 exponent, with exponents as high as 0.87 reported for exercise-induced $\dot{V}_{O_{2,max}}$ (Taylor et al., 1981; Weibel et al., 1991; Weibel et al., 2004; Weibel and Hoppeler, 2005; White and Seymour, 2005; White et al., 2008). Despite the substantial number of theoretical and experimental estimates, there is still no agreed-upon allometric scaling exponent for exercise $\dot{V}_{O_{2,max}}$ (Darveau et al., 2002; Hochachka et al., 2003; White and Seymour, 2005). Given that the evolution of enzymatic, cellular and/or organ-system flux capacities, distribution networks, etc., will be affected by the maximal demands upon the animal, greater attention to the scaling of $\dot{V}_{O_{2,max}}$ is appropriate.

In studies of the upper limit to the intensity of aerobic power production, $\dot{V}_{O_{2,max}}$ has become something of a benchmark (Wagner, 2012). Numerous studies, especially in the exercise physiology literature, have attempted to explain the mechanistic foundations of, and limiting factors for, $\dot{V}_{O_{2,max}}$ in mammals [e.g. Jones, 1998; Hochachka et al., 2003; Rezende et al., 2006 (and references therein); White et al., 2008; Longworth et al., 1989; Spurway et al., 2012] and other taxa (Hillman et al., 2012). Various potential constraints, such as aerobic enzyme catalytic capacity, muscle mitochondrial density, microvasculature, capillary volume, hematocrit, cardiac output and lung O_2 diffusion capacities have been considered in investigations of $\dot{V}_{O_{2,max}}$ (Weibel et al., 2004; White and Seymour, 2005). Theoretical limitations, including O_2 flux, network design and temperature effects have also been discussed (West et al., 1997; White et al., 2008; Hillman et al., 2012). Despite a long list of proposed explanatory factors and measurements from species spanning a wide mass range (e.g. Taylor et al., 1981; Garland and Huey, 1987), few solid conclusions regarding either scaling exponents or the functional factors limiting to $\dot{V}_{O_{2,max}}$ have been reached (but see Noakes, 2011; Wagner, 2011; Hillman et al., 2012; Spurway et al., 2012).

Another problematic issue in studies of $\dot{V}_{O_{2,max}}$ is the historical reliance on conventional statistical methods (least-squares regression and analysis of covariance) to estimate mass-scaling exponents. An inherent – usually implicit – assumption of conventional regression models is that all species in the analysis are equally related and hence provide statistically independent data points. Incorporating phylogenetic relationships accounts for the biological reality that all species are not equally related (Garland et al., 2005; Nunn, 2011; Rezende and Diniz-Filho, 2012) and that shared evolutionary history may affect differences among species. Various phylogenetic statistical methods have been incorporated into a number of comparative studies of physiology, biochemistry, morphology and behavior, including a recent analysis of mammalian basal metabolic rate (White et al., 2009). However, no comprehensive study of mammalian $\dot{V}_{O_{2,max}}$ has employed phylogenetically aware statistics.

To date, most tests of exercise $\dot{V}_{O_{2,max}}$ have been performed on treadmills but some recent studies have utilized running wheel

respirometry chambers (e.g. Chappell and Bachman, 1995; Chappell et al., 2004; Chappell and Dlugosz, 2009; Dlugosz et al., 2009; Dlugosz et al., 2012). Different methodologies can provide unequal $\dot{V}_{O_{2,max}}$ values in treadmill tests (e.g. Kemi et al., 2002) and it is possible that different $\dot{V}_{O_{2,max}}$ values could be elicited by exercise in treadmills *versus* wheels. Hence it is appropriate to perform robust comparisons of the two methods. Here, we include new data on a number of species tested in wheel respirometers and provide the first large multispecies analysis of wheel- *versus* treadmill-elicited $\dot{V}_{O_{2,max}}$ in small mammals.

Beyond studying mass scaling and comparing wheel and treadmill methods, we had several additional goals. We included new data for 21 rodent species (including the largest rodent, the capybara *Hydrochoerus hydrochaeris*, the small marsupial *Dromiciops gliroides*, and the smallest member of the order Carnivora, the least weasel *Mustela nivalis*) in addition to data compiled from the literature, for a total of 77 ‘species’ (including some subspecies or separate populations within species). We searched for phylogenetic signal (the tendency of related species to resemble each other) in body mass-corrected $\dot{V}_{O_{2,max}}$, and in particular tested whether three species previously reported to have particularly high $\dot{V}_{O_{2,max}}$ (the bat *Phyllostomus hastatus*, the domestic horse *Equus caballus* and the pronghorn *Antilocapra americana*) (Thomas and Suthers, 1972; Lindstedt et al., 1991; Jones and Lindstedt, 1993; Weibel and Hoppeler, 2005) are statistically unusual when accounting for phylogenetic relationships. We tested for an effect of diet type (five categories) on $\dot{V}_{O_{2,max}}$, as has been reported for basal metabolism (e.g. McNab, 1992; Muñoz-Garcia and Williams, 2005; White and Kearney, 2013). Finally, we estimated the allometric scaling exponent for mammalian $\dot{V}_{O_{2,max}}$ through a model-averaging approach.

MATERIALS AND METHODS

Data collection

We used literature searches (Google, Google Scholar, Web of Science, PubMed) for ‘ $\dot{V}_{O_{2,max}}$ ’ and ‘aerobic capacity’ to compile published values of mammalian exercise-induced $\dot{V}_{O_{2,max}}$ and body mass for 54 ‘species’ [including some subspecies or separate populations within species (Nowak, 1999)] (supplementary material Table S1) (Segrem and Hart, 1967; Pasquis et al., 1970; Wunder, 1970; Hoppeler et al., 1973; Lutton and Hudson, 1980; Hiernaux and Ghesquiere, 1981; Elsner and Ashwell-Erikson, 1982; Williams, 1983; Chappell and Snyder, 1984; Chappell et al., 1995; Chappell et al., 2004; Chappell et al., 2007; MacMillen and Hinds, 1992; Ong, 1993; Williams et al., 1993; Dohm et al., 1994; Schaeffer et al., 2001; Dawson et al., 2004; Sadowska et al., 2005; Sadowska, 2009; Gaustad et al., 2010). We chose to use the data for horses (*Equus caballus*) from Kayar et al. (Kayar et al., 1989) in order to maximize comparability with the data for steer (*Bos taurus*) included in the same study. Since that study, several studies have published data on horse $\dot{V}_{O_{2,max}}$ that indicate higher values (e.g. Nieto et al., 2009; Ohmura et al., 2010). Use of these alternative values would not change our overall statistical results, as the horse turns out to be a large, positive statistical outlier in any case (see Results).

We also collected new data for an additional 24 species (Table 1), as described below. At least two individuals of each species were tested. For agoutis (*Dasyprocta cristata*) and capybaras, standard and maximal rates of O_2 were measured using a flow-through system calibrated using the N_2 dilution technique (Fedak et al., 1981). Exercise metabolism in both species was measured in enclosed boxes resting on motorized treadmills (agoutis: 1.5 m long \times 0.3 m wide

Table 1. List of species for which we present new measurements of $\dot{V}_{O_{2,max}}$

Species	Taxonomic authority	Common name	N	Order	Location
<i>Dromiciops gliroides</i>	Thomas 1894	Monito del monte	6F, 8M	Microbiotheria	Valdivia, Chile
<i>Mustela erminea</i>	Linnaeus 1758	Short-tailed weasel (Ermine)	2F	Carnivora	Western USA
<i>Mustela nivalis</i>	Linnaeus 1766	Weasel (least weasel)	1F, 4M	Carnivora	Poland
<i>Octodon degus</i>	Waterhouse 1848	Common degu	11F, 39M	Rodentia	Chile
<i>Dasyprocta cristata</i>	(Desmarest 1816)	Agouti		Rodentia	Brazil
<i>Hydrochaeris hydrochaeris</i>	(Linnaeus 1766)	Capybara		Rodentia	Brazil
<i>Tamias minimus</i>	(Bachman 1839)	Least chipmunk	11F, 26M	Rodentia	Western USA
<i>Ammospermophilus leucurus</i>	(Merriam 1889)	White-tailed antelope squirrel	10F, 3M	Rodentia	Western USA
<i>Otospermophilus beecheyi</i>	(Richardson 1829)	California ground squirrel	3F, 5M	Rodentia	Western USA
<i>Callospermophilus lateralis</i>	(Say 1823)	Golden-mantled ground squirrel	15F, 7M	Rodentia	Western USA
<i>Urocitellus beldingi</i>	(Merriam 1888)	Belding's ground squirrel	10F, 7M	Rodentia	Western USA
<i>Perognathus parvus</i>	(Peale 1848)	Great basin pocket mouse	31F, 25M	Rodentia	Western USA
<i>Chaetodipus penicillatus</i>	(Woodhouse 1852)	Desert pocket mouse	8F, 11M	Rodentia	Western USA
<i>Dipodomys ordii</i>	Woodhouse 1853	Ord's kangaroo rat	7F, 6M	Rodentia	Western USA
<i>Dipodomys merriami</i>	Meams 1890	Merriam's kangaroo rat	32F, 30M	Rodentia	Western USA
<i>Dipodomys simulans</i>	Merriam 1904	Dulzura kangaroo rat	7F, 7F	Rodentia	Western USA
<i>Dipodomys panamintinus</i>	(Merriam 1894)	Panamint kangaroo rat	20F, 11M	Rodentia	Western USA
<i>Rattus rattus</i>	(Linnaeus 1758)	Black rat	10F, 8M	Rodentia	Western USA
<i>Apodemus flavicollis</i>	(Melchior 1834)	Yellow-necked mouse	13F, 11M	Rodentia	Poland
<i>Apodemus agrarius</i>	(Pallas 1771)	Stripe-backed mouse	1F, 3M	Rodentia	Poland
<i>Lemmiscus curtatus</i>	(Cope 1868)	Sagebrush vole	3F, 6M	Rodentia	Western USA
<i>Microtus oeconomus</i>	(Pallas 1776)	Root vole	6F, 6M	Rodentia	Poland
<i>Microtus arvalis</i>	(Pallas 1778)	Common vole	3F	Rodentia	Poland
<i>Microtus montanus</i>	(Peale 1848)	Montane vole	11F, 22M	Rodentia	Western USA

M, male; F, female.

box; capybaras: 2.1 m long×0.8 m wide box). Agoutis wore a lightweight plastic mask that captured expired gas. Air was pulled through the mask at 90 l min⁻¹. Capybaras wore no mask; instead, air was pulled through the respirometry box (flow rate 250–300 l min⁻¹; volume ~180 l after excluding the animal's body volume). O₂ was measured in agoutis over a period of 1–2 h while they rested within the box; in capybaras, it was measured over a period of 6–12 h at different times of the day and after the animals had been kept off feed for 12–24 h. After a warm-up, animals were run at high speed for 1–2 min (agoutis) or 2–3 min (capybaras) while O₂ was recorded. Only one high-speed run was performed per day. The $\dot{V}_{O_{2,max}}$ was identified as the highest O₂ when further increases in speed elicited no increase in O₂, when the respiratory exchange ratio exceeded 1.0 (capybaras) and at running speeds (1.8 m s⁻¹ for agoutis, <3 m s⁻¹ for capybaras) at which plasma lactate accumulation rates approached 7–10 mmol l⁻¹ min⁻¹ [as suggested previously (Seeherman et al., 1981)].

In addition to capybaras and agoutis, we measured $\dot{V}_{O_{2,max}}$ in 22 species of small mammals (Table 1). Wild specimens were live-trapped at several locations in western USA (including Boyd Deep Canyon Research Center, the Motte Rimrock Reserve and the University of California, Riverside campus, all in Riverside County, CA, USA, and the Sierra Nevada Aquatic Research Laboratory in Mono County, CA, USA), northeastern Poland (the Mammal Research Institute in Bialowieza, and the University of Bialystok's Gugny field station) and central and southern Chile (Santiago and Valdivia). Captured animals were immediately transported to the laboratory and their $\dot{V}_{O_{2,max}}$ was measured within 24 h of capture (for most species, within 4 h of capture). Food, water, bedding and shelter were available to animals prior to $\dot{V}_{O_{2,max}}$ tests. Wild-caught individuals were released at the site of capture.

Capture, handling and measurement protocols were approved by the University of California, Riverside, University of California, Davis, and Harvard University Institutional Animal Care and Use Committee, the California Department of Fish and Game, the Polish

Nature Conservancy authorities (permit nos DOLPiK-po/ogiz-4200/IV-6.1/2979/8742/07/aj, LKE42/2008 and LKE28/2009) and the Chilean Servicio Agrícola y Ganadero (permit 444-2007), and conform to US National Institutes of Health Guidelines (NIH publication 78-23) and US, Polish and Chilean laws.

Wheel respirometry

We used forced exercise in enclosed running wheel respirometers to elicit $\dot{V}_{O_{2,max}}$ in the 22 species of small mammals mentioned above (Chappell and Bachman, 1995). Wheels were supplied with dry air under positive pressure from upstream mass flow controllers (Tylan, Bedford, MA, USA or Sensirion, Staefa, Switzerland) calibrated against an accurate dry volume meter. Flow entered and exited the wheels through airtight axial bearings. A dispersive manifold on the incurrent side helped ensure even perfusion of the wheel volume, and mixing was also assisted by animal motion and the rotation of the wheel. A subsample of excurrent air (about 150 ml min⁻¹) was dried with Drierite, scrubbed of CO₂ with soda lime, redried, and flowed through an oxygen analyzer (Sable Systems Oxzilla or FC-10, Las Vegas, NV, USA). Outputs from the instruments were digitized by an A–D converter (Sable Systems UI-2) and recorded every 1.0 s on a computer running LabHelper software (Warthog Systems, www.warthog.ucr.edu).

We used four respirometer wheels with different flow rates to accommodate a range of animal sizes and $\dot{V}_{O_{2,max}}$. California ground squirrels (*Otospermophilus beecheyi*; >700 g) were tested in a wheel with an internal volume of 57 l (54 cm diameter×25 cm width) and a flow rate of 23 l min⁻¹ at standard pressure and temperature (STP). Species weighing 120–400 g were measured in a 9 l wheel (32 cm diameter×11 cm width) at 5 l min⁻¹ STP. A 3.8 l wheel (24 cm diameter×8.5 cm width) and flow rates of 2–2.5 l min⁻¹ STP were used for 60–120 g animals, and for smaller species we used a 1.5 l wheel (16.5 cm diameter×7 cm width) at flow rates of 1.5–2 l min⁻¹. The two large wheels were padded with carpet to provide traction and prevent injury; smaller wheels were lined with friction tape. Flow

was measured upstream of the wheels and CO₂ was absorbed prior to O₂ measurements, so we computed oxygen consumption as:

$$\dot{V}_{O_2} = \dot{V}(F_{IO_2} - F_{EO_2}) / (1 - F_{EO_2}). \quad (1)$$

Here, \dot{V} is flow rate (STP), F_{IO_2} is the fractional content of O₂ in incurrent gas (0.2095), and F_{EO_2} is the fractional content of O₂ in excurrent gas. Because tests were generally too brief to attain steady-state conditions, we used the ‘instantaneous’ adjustment (Bartholomew et al., 1981) to accurately measure rapid changes in O₂. Effective volumes (derived from washout kinetics during rotation) for the four wheels at the flow rates described above were 56, 8.3, 3.1 and 0.9 l, respectively.

To measure $\dot{V}_{O_{2,max}}$, we weighed animals (± 0.1 g; ± 1 g for California ground squirrels) and placed them into the chamber. A reference reading of unbreathed air was obtained, after which we recorded ‘resting’ O₂ for several minutes with the wheel locked. Wheel rotation began at low RPM. After animals oriented appropriately, we increased rotation speed approximately every 30 s while monitoring behavior and O₂. Rotation was halted when animals were no longer able to maintain position or O₂ did not increase with further speed increases. We recorded O₂ for several minutes during the recovery period and then took a second reference reading. After applying the ‘instantaneous correction’, we calculated $\dot{V}_{O_{2,max}}$ as the highest 1 min running average of O₂ during the period of forced exercise. All tests were performed at room temperature (18–23°C). Whenever possible, repeated measurements were taken on the same individual, and the highest of the $\dot{V}_{O_{2,max}}$ measurements was used in analyses.

Phylogenetic tree construction

We constructed the phylogenetic tree using Mesquite (Maddison and Maddison, 2009) and phylogenetic hypotheses from several previously published studies (Table 2). The basic tree structure is from Meredith et al. (Meredith et al., 2011). Within-clade structure was determined according to the sources listed in Table 2. Arbitrary branch lengths were set according to the method of Pagel (Pagel, 1992). Electronic versions of the tree are available in supplementary material Tables S3 and S4.

Statistical analyses

We first tested for phylogenetic signal in log₁₀ body mass and in log₁₀ mass-corrected $\dot{V}_{O_{2,max}}$ following Blomberg et al. [see pp. 720–721 (Blomberg et al., 2003)]. In brief, $\dot{V}_{O_{2,max}}$ was divided by body mass raised to the scaling exponent determined from a regression performed with phylogenetically independent contrasts; this quantity was then log-transformed. We used the PHYSIG_LL.m Matlab program provided by Blomberg et al. (Blomberg et al., 2003) to calculate the *K*-statistic, the randomization test for phylogenetic

signal based on the mean squared error, and the likelihood of the specified phylogenetic tree (see ‘Phylogenetic tree construction’ above), and an assumed model of Brownian motion-like trait evolution, *versus* the likelihood of a star phylogeny. The *K*-statistic is measured on the interval of zero to infinity and indicates the amount of phylogenetic signal relative to a Brownian motion expectation of 1.00 (Blomberg et al., 2003; Revell et al., 2008). Values below unity indicate less tendency for related species to resemble each other than expected under a Brownian motion model of character evolution, whereas values above one indicate more than expected. It is important to note that values substantially below unity can still be associated with statistically significant phylogenetic signal, based on the randomization test developed by Blomberg and colleagues (Blomberg et al., 2003).

We computed (multiple) regressions in three ways (reviewed in Garland et al., 2005; Lavin et al., 2008): conventional, non-phylogenetic, ordinary least squares (OLS); phylogenetic generalized least squares (PGLS); and regression in which the residuals are modeled as having evolved *via* an Ornstein–Uhlenbeck process (RegOU), which is intended to mimic stabilizing selection on the specified phylogenetic tree. Values of r^2 were calculated using eqn 2.3.16 (p. 32) in Judge et al. (Judge et al., 1985) [see p. 546 of Lavin et al. (Lavin et al., 2008)]. These three models form a continuum between assuming a star phylogeny with no hierarchical structure (OLS), a specified phylogeny (PGLS) and a phylogeny whose branch lengths are altered such that it can take on values intermediate between the star and the original phylogeny, or even become more strongly hierarchical than the original tree (RegOU). The RegOU model contains an additional parameter, *d*, that estimates the transformation of the phylogenetic tree (Blomberg et al., 2003; Lavin et al., 2008). Hence, its fit can be compared with the OLS or PGLS models by a ln maximum likelihood ratio test, where twice the difference in the ln maximum likelihood is assumed (asymptotically) to be distributed as a χ^2 with 1 d.f., for which the critical value at $\alpha=0.05$ is 3.841. Similar tests can be used to compare the fit of models within the OLS, PGLS or RegOU classes when they contain nested subsets of independent variables (e.g. Lavin et al., 2008; Gartner et al., 2010).

All regression models included log₁₀ body mass as a predictor of log₁₀ $\dot{V}_{O_{2,max}}$. Additional candidate independent variables were wheel *versus* treadmill measurement (WHEEL), a variable coding for clade membership (CLADE2), which subdivided the tree into a total of 12 monophyletic groups (see color coding in Fig. 1), and thus involved 11 dummy variables, and three dummy variables coding for species previously shown to have a high $\dot{V}_{O_{2,max}}$ for their body size (pronghorn, horse and bat). Although it has been noted that domestic dogs have a relatively high $\dot{V}_{O_{2,max}}$ (e.g. Weibel and Hoppeler, 2005), they were not singled out for analysis here

Table 2. List of sources used to construct phylogeny

Order	Family	Source
Marsupialia		Meredith et al., 2008
Cetartiodactyla		Prothero and Foss, 2007
Carnivora		Bininda-Emonds et al., 2007; Nyakatura and Bininda-Emonds, 2012
Carnivora	Canidae	Bardeleben et al., 2005
Rodentia		Veniaminova et al., 2007; Churakov et al., 2010; Sobrero et al., 2011
Rodentia	Sciuridae	Harrison et al., 2003; Banbury and Spicer, 2007; Helgen et al., 2009
Rodentia	Heteromyidae	Alexander and Riddle, 2005; Hafner et al., 2007
Rodentia	Cricetidae	Robovský et al., 2008
Rodentia	Muridae	Martin et al., 2000; Michaux et al., 2002; Steppan et al., 2005
Rodentia	Cricetidae	Chaline and Graf, 1988

The basic tree structure was provided in a previous publication (Meredith et al., 2011).

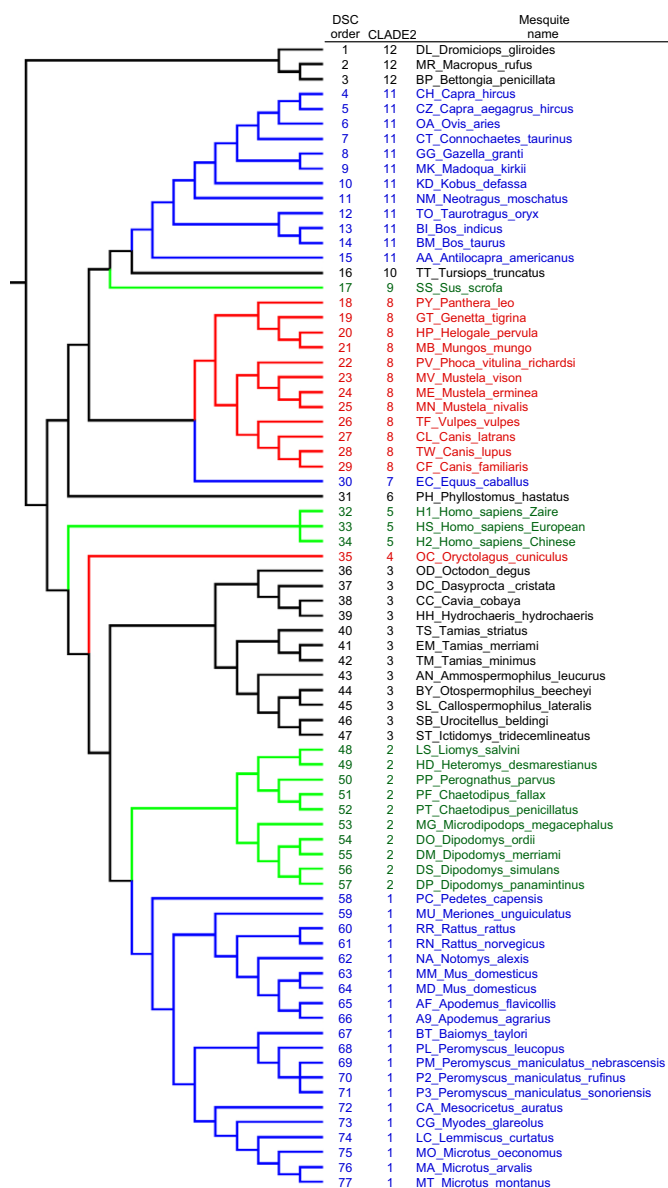


Fig. 1. Phylogeny used for statistical analyses, with Pagel's (Pagel, 1992) arbitrary branch lengths. 'DSC order' refers to the species order in the phylogenetic tree file (supplementary material Table S4). CLADE2 is a variable coding for clade membership (see Materials and methods). See Table 2 for information on tree construction.

because the data set includes three other canids, and canids in general have relatively high $\dot{V}_{O_2,max}$ for their body mass (Weibel et al., 1983; Garland and Huey, 1987; Longworth et al., 1989; Bicudo et al., 1996).

We also considered testing for differences between wild-caught *versus* domestic forms. However, we found it problematic to code some species because of a lack of information concerning their origin (e.g. fox, *Vulpes vulpes*) or ambiguity as to the appropriate category (e.g. some human populations). In the first large-scale comparative study of mammalian $\dot{V}_{O_2,max}$, Taylor et al. [see p. 35 (Taylor et al., 1981)] noted that '... domestic animals provide the extremes of adaptation for oxygen demand within a size class, and it is interesting to note that the wild animals generally fall midway between these extremes ... For this reason, including the domestic animals in the allometric relationship between $\dot{V}_{O_2,max}$ and [body mass] of wild

animals changes the scaling factor little, but does increase the range of the 95% confidence interval for the coefficient and the exponent of the equation.' Although we did not attempt the comparison in this paper, all of the raw data are presented, so readers can perform such comparisons as desired.

We utilized a model selection approach to objectively choose among models corresponding to different combinations of adaptive hypotheses for each of the regression methods (OLS, PGLS and RegOU) (e.g. see Gartner et al., 2010). For each model, we report the ln maximum likelihood, Akaike information criterion [$AIC = (-2 \times \ln \text{maximum likelihood}) + (2 \times \text{number of parameters})$], and AIC corrected for small sample size [$AICc = (-2 \times \ln \text{maximum likelihood}) + (2 \times p \times n / (n - p - 1))$], where p is the number of parameters and n is the sample size (in these formulations, smaller numbers indicate better-fitting models) (see Burnham and Anderson, 2002). Because AICc converges to AIC with larger sample sizes, it is recommended to always use AICc to select the best model (Burnham and Anderson, 2002). When comparing a series of models, nested or not, the one with the lowest AICc is considered to be the most parsimonious. Note that maximum likelihoods are used for computing AIC and likelihood ratio tests, whereas restricted maximum likelihood (REML) is used for estimating coefficients in the model, such as the allometric scaling exponent. REML estimates of the OU transformation parameter, d , are also reported. All of the regression models were computed using the Matlab Regressionv2.m program (Lavin et al., 2008).

We also calculated an Akaike weight (w_i), or model probability, for each model. For the whole set of models considered, the w_i sum to 1. For these models, w_i is the probability that model i would be selected as the best-fitting model if the data were collected again under identical circumstances. As another way to quantify the strength of evidence, we calculated the evidence ratio (ER) between the best model and each model in the set: ER has a 'raffle ticket' interpretation, in the sense that an ER value of 8 means that the best model has 8 tickets, whereas the other model only has one (Anderson, 2008). Another way to say this is that the ER indicates the relative amount of evidence favoring the best model over the others.

Because the w_i are probabilities, it is possible to sum these for models containing given variables to identify the variables that are more strongly represented across all well-supported models and are thus more likely to have important predictive value (Burnham and Anderson, 2002). For instance, if one considers diet (here coded as five categories in the DIET1 variable: 1=carnivore, 2=herbivore, 3=omnivore, 4=insectivore, 5=piscivore), one can calculate the sum of the w_i of all the models including diet, and this is the probability that, of the variables considered, diet would be included in the best approximating model were the data collected again under identical circumstances. This procedure allows one to compare the relative importance of candidate independent variables.

Finally, we used model averaging to estimate the allometric exponent of M_b . For every model, estimated coefficients and standard errors (s.e.) are conditional on the model being correct, but if we are unsure about the model structure (because more than one model has a relatively high AICc), then these estimates should incorporate this source of uncertainty. Therefore, we weighted the allometric exponent estimates from alternative candidate models by the evidence for the respective models (e.g. measured as w_i), and averaged across models (Burnham and Anderson, 2002).

RESULTS

The K -statistic (Blomberg et al., 2003) indicated a high level of phylogenetic signal for \log_{10} body mass ($K=1.322$), and the

Table 3. The three best statistical models in our analysis (ranked by AICc; smaller is better)

Independent variable	Model	d REML	ln Maximum likelihood	AIC (ML)	AICc (ML)	Mean squared error	s.e. of the estimate	r ² for model
log ₁₀ Body mass, BAT, PRONG, HORSE	RegOU	0.5157	37.5766	-61.1531	-59.5299	0.0237	0.1540	0.9615
log ₁₀ Body mass, WHEEL, BAT, PRONG, HORSE	RegOU	0.5240	37.7939	-59.5878	-57.4701	0.0239	0.1546	0.9613
log ₁₀ Body mass, BAT, PRONG	RegOU	0.6066	33.6792	-55.3585	-54.1585	0.0259	0.1608	0.9526

w _i	Cumulative w _i	ER	Independent variable	Coefficient	s.e.	F	d.f.	P
0.6874	0.69	1.0000	Body mass	0.8371	0.0213	1548.85	1,72	1.9704 E-50
			BAT	0.5232	0.1894	7.63	1,72	0.0073
			PRONG	0.7273	0.1853	15.40	1,72	0.0002
			HORSE	0.5045	0.1866	7.31	1,72	0.0086
0.2454	0.93	2.8008	Body mass	0.8425	0.0228	1366.36	1,71	1.4565 E-48
			WHEEL	0.0316	0.0447	0.50	1,71	0.4822
			BAT	0.5360	0.1920	7.79	1,71	0.0067
			PRONG	0.7272	0.1868	15.16	1,71	0.0002
0.0469	0.98	14.6685	Body mass	0.8515	0.0226	1415.84	1,73	1.5198 E-49
			BAT	0.5235	0.2106	6.18	1,73	0.0152
			PRONG	0.7043	0.2017	12.19	1,73	0.0008

REML, restricted maximum likelihood; AIC, Akaike information criterion; AICc, AIC corrected for small sample size; ML, maximum likelihood; RegOU, regression in which the residuals are modeled as having evolved *via* an Ornstein-Uhlenbeck process; w_i, Akaike weight; ER, evidence ratio. BAT, PRONG and HORSE code for bat, pronghorn and horse, respectively; WHEEL codes for data obtained from running wheel respirometers *versus* treadmills. Y-intercepts are in supplementary material Table S2.

randomization test for statistical significance based on the mean squared error was highly significant ($P < 0.0005$). The ln maximum likelihood for the specified phylogeny was -88.40 *versus* -135.65 for a star phylogeny, thus indicating a much better fit of the former to the data for log₁₀ body mass. For log₁₀ mass-corrected $\dot{V}_{O_{2,max}}$, the K -statistic was substantially lower ($K = 0.532$), but the randomization test again indicated strong statistical significance ($P < 0.0005$). The ln maximum likelihood for $\dot{V}_{O_{2,max}}$ on the specified phylogeny was 24.38 *versus* 11.79 for a star phylogeny, indicating a better fit of the former.

In all 27 regression models (see supplementary material Table S2 for full results), AICc indicated that the PGLS and RegOU models fit the data better than their OLS (non-phylogenetic) counterparts. Likelihood ratio tests indicated that in all cases, the RegOU models fit the data significantly better than the OLS models (all $P < 0.03$). Stated another way, a model that assumed a star phylogeny was never the most appropriate. These results highlight the importance of accounting for hypothesized phylogenetic relationships in the statistical analyses.

The top three models that accounted for 98% of the cumulative evidence (cumulative w_i) are all RegOU models (Table 3). In addition to log₁₀ body mass (included in all models), the most influential independent variables were the indicators coding for the bat (BAT), pronghorn (PRONG) and horse (HORSE). Likewise, P -values associated with BAT, PRONG and HORSE in the top three models were always statistically significant (all $P < 0.02$; and see Fig. 2). These three species have long been viewed as having very high $\dot{V}_{O_{2,max}}$ for their body mass, but this has not been subjected to formal statistical tests that incorporate phylogenetic information (Thomas and Suthers, 1972; Lindstedt et al., 1991; Jones and Lindstedt, 1993; Weibel and Hoppeler, 2005). Our results with phylogenetically aware analyses confirm that the bat, pronghorn and horse have unusually high aerobic capacity.

The independent variable WHEEL (indicating wheel *versus* treadmill data collection method) was found in the second-ranked

model, but its cumulative weight across all models was small (only 0.247; supplementary material Table S2). Additionally, the P -value for WHEEL in this model did not approach statistical significance ($P = 0.48$). DIET1 and CLADE2 did not appear in the top three models. The cumulative weight of DIET1 across all models was 0.005 and the cumulative weight of CLADE2 (which, in order of AICc values, does not appear until model 20 of 27) was only 0.000005.

Finally, values from all models were averaged to estimate the allometric scaling exponent: 0.839 ± 0.022 (\pm s.e.). The corresponding 95% confidence interval is 0.795 to 0.883 (based on degrees of freedom provided by the most inclusive model: d.f.=64).

If one desires a simple equation to predict log₁₀ $\dot{V}_{O_{2,max}}$ (in ml O₂ [STPD] h⁻¹), then the first one in Table 3 can be used:

$$\begin{aligned} \log_{10} \dot{V}_{O_{2,max}} = & 1.2664 + 0.8371 \times \\ & \log_{10} \text{body mass} + 0.5232 \text{ if a bat,} \\ & + 0.7273 \text{ if a pronghorn,} \\ & + 0.5045 \text{ if a horse.} \end{aligned} \quad (2)$$

where body mass is in grams.

Considering the models that include only body mass, the best fitting one is a PGLS model that provides the following equation (see supplementary material Table S2):

$$\log_{10} \dot{V}_{O_{2,max}} = 1.3295 + 0.8485 \times \log_{10} \text{body mass.} \quad (3)$$

The ordinary least-squares version is:

$$\log_{10} \dot{V}_{O_{2,max}} = 1.2360 + 0.8578 \times \log_{10} \text{body mass.} \quad (4)$$

DISCUSSION

Our findings strongly underscore the importance of utilizing phylogenetically informed statistics when evaluating comparative $\dot{V}_{O_{2,max}}$ data. Using three versions of a given statistical model (i.e.

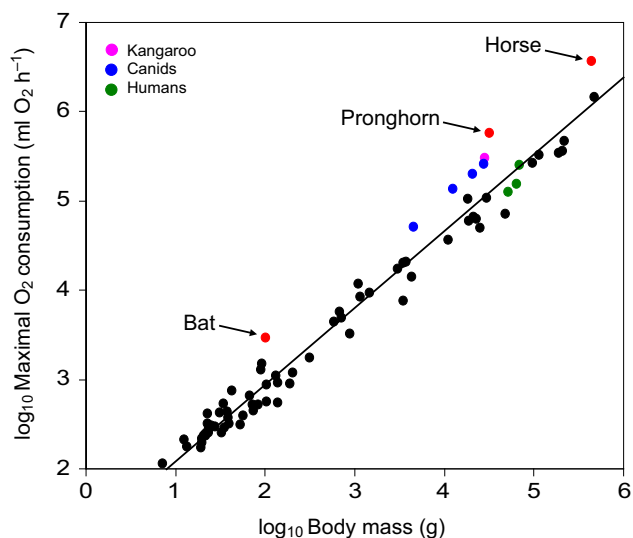


Fig. 2. Relationship between \log_{10} body mass and $\log_{10} \dot{V}_{O_{2,max}}$ for the 77 'species' used in these analyses with a conventional, ordinary least squares (OLS) regression line fitted to the data. The bat, pronghorn and horse are statistical outliers (see Results). Canids tend to have high values for their body mass [see also Bicudo et al. (Bicudo et al., 1996); data for the blue fox (domesticated arctic fox, *Alopex lagopus*) were unintentionally omitted from the data set analyzed in this paper], as does the kangaroo. Human beings are unremarkable.

a given set of independent variables), we determined which model (OLS, PGLS or RegOU) best fitted our dataset, based on the Akaike information criterion corrected for small sample size (AICc). \log_{10} Body mass was used in all models; it has been previously shown to have high phylogenetic signal (the tendency for related species to resemble each other), and our estimate of the K -statistic ($K=1.322$) agrees with this general result. Importantly, mass-corrected $\dot{V}_{O_{2,max}}$ also had highly significant phylogenetic signal ($P<0.001$), but at a lower level ($K=0.532$), also consistent with previous studies of other physiological traits, such as BMR (Blomberg et al., 2003; Rezende et al., 2004; Rezende and Diniz-Filho, 2012).

The best model (smallest AICc) included body mass, BAT, PRONG and HORSE as independent variables. To identify their relative importance, all independent variables used in the analyses were weighted according to the predictive values of the models (i.e. Akaike weights) in which they appeared, and summed across all models (Burnham and Anderson, 2002) (see supplementary material Table S2). The top three independent variables (not including body mass, which has a relative importance of 100% because it is present in all models) were PRONG, BAT and HORSE. For each of these, there is >95% probability that of all the models considered, these variables will be present in the best model (if data were collected again under identical circumstances). Thus, the very high $\dot{V}_{O_{2,max}}$ of bats, pronghorns and horses is substantially different from that of the rest of the included species, supporting the conclusions of several previous studies (e.g. Thomas and Suthers, 1972; Lindstedt et al., 1991; Jones and Lindstedt, 1993; Weibel and Hoppeler, 2005). Although these results might be viewed as largely confirmatory, it is important to note that in conventional statistical analyses, potentially unusual species (coded as dummy variables) are compared with all other species in the data set in an equally weighted fashion, ignoring phylogenetic position. With the methods we used, however, as with phylogenetically independent contrasts (see Garland and Janis, 1993; Garland and Adolph, 1994; Garland and

Ives, 2000; Rezende and Diniz-Filho, 2012), a focal species is, in effect, compared most directly with its nearest relative in the data set, and less directly with species that are further removed in terms of phylogenetic relationships. In other words, the statistical comparisons are performed in a phylogenetically principled fashion.

Note that other models, not presented here, may also be of interest. For example, the original reason for studying the capybara (the largest extant rodent) was to test whether the scaling of $\dot{V}_{O_{2,max}}$ might differ between rodents and other mammals. Conventional statistical analyses of our data set for 77 species indicate that the scaling exponent is not statistically different between rodents and other mammals, but that rodents on average have a lower $\dot{V}_{O_{2,max}}$ (whether or not BAT, PRONG and HORSE are included as dummy variables). For Canidae, conventional statistical analyses indicate a higher average $\dot{V}_{O_{2,max}}$ as compared with other mammals (also whether or not BAT, PRONG and HORSE are included as dummy variables).

Out of the 27 models, the top four were RegOU models. REML d values associated with each model were considerably greater than zero, indicating that some intermediate transformation of the branch lengths (between a star phylogeny and the specified phylogeny) yielded the best fit of the regression model to the $\dot{V}_{O_{2,max}}$ data. This finding demonstrates phylogenetic signal in mass-corrected $\dot{V}_{O_{2,max}}$. Even after accounting for three species with a particularly high $\dot{V}_{O_{2,max}}$ (bat, pronghorn, horse) – two of which are dummy-coded individually for the CLADE2 variable because they are the only member of that lineage included in our data set – CLADE2 was not among the most important variables in the models. As the cumulative weight of CLADE2 is extremely low (<0.001%) and the top three models all indicate the presence of phylogenetic signal in the residuals, we conclude that phylogenetic signal in $\dot{V}_{O_{2,max}}$ cannot be adequately accounted for by modeling differences among the 12 major clades identified for these analyses. Rather, the tendency for related species to have a somewhat similar $\dot{V}_{O_{2,max}}$ is distributed throughout the phylogeny. It is also important to note that all models including only body mass had very low support, and the worst model of all was an OLS regression with only body mass as an independent variable (see supplementary material Table S2).

Diet has been implicated in interspecific differences in metabolic rates, particularly in BMR (e.g. McNab, 1992; Muñoz-García and Williams, 2005; White and Kearney, 2013). This effect is proposed to derive from differences in the nutrient content, digestibility, or predictability and abundance of various food types, which somehow leads to variation in the selective regime that acts on BMR. For example, diets of low caloric value might lead to selection that favors reduced BMR because it lowers the overall energy requirements of an animal. In addition, selection related to diet variation could lead to the evolution of other traits (e.g. gut size, body composition, circulating hormone concentrations) (Konarzewski and Książek, 2013) that affect whole-animal BMR. Diet is also thought to be associated with a suite of other traits, including home range size, which may also show strong phylogenetic signal (Garland et al., 1993; Muñoz-García and Williams, 2005; Rezende et al., 2004). However, we found diet to be of little importance in our analysis of $\dot{V}_{O_{2,max}}$, considering all models (Table 3). It is not clear why diet might be directly related to exercise $\dot{V}_{O_{2,max}}$, but diet is likely related to body size (Rezende et al., 2004), which is accounted for in every model in our analysis. Unsurprisingly, ANOVA of body mass in relation to diet in the 77 'species' in our study indicate statistically significant differences in mass among diet types, irrespective of the assumed model of evolution (Table 4).

Intuitively, differences in measurement technique might be expected to influence such performance measures as $\dot{V}_{O_{2,max}}$ (e.g.

Table 4. ANOVA of body mass in relation to diet (coded in five categories)

Model type	d REML	In Maximum likelihood	AIC (ML)	AICc (ML)	Mean squared error	s.e. of the estimate	r ² for model	F for DIET1 (4 and 72 d.f.)	P
OLS		-129.5930	271.1850	272.3850	1.8136	1.3467	0.1455	3.0656	0.02169
PGLS		-80.9650	173.9300	175.1300	0.5129	0.7161	0.1757	3.8354	0.00699
RegOU	1.0342	-80.9636	175.9270	177.5500	0.5134	0.7165	0.1767	3.8636	0.00671

Diet categories were 1=carnivore, 2=herbivore, 3=omnivore, 4=insectivore, 5=piscivore.

mice running uphill on treadmills had higher $\dot{V}_{O_{2,max}}$ than when running on the level) (Kemi et al., 2002). The species in our study were tested with either traditional treadmill exercise techniques or forced running in enclosed wheel respirometers. In terms of practicality, wheel respirometers offer several advantages over treadmills for measuring exercise $\dot{V}_{O_{2,max}}$ in small (<1 kg) animals. Wheels are smaller, simpler and less expensive than typical treadmills. Most individuals require no training to exercise intensively in a wheel, and many species, particularly rodents, spontaneously run in them. Wheels lack a treadmill's characteristic interface between rigid walls and moving tread, and hence are less likely to cause injury, particularly at the high speeds typically necessary to elicit $\dot{V}_{O_{2,max}}$. These benefits are substantial, but it is important to verify whether results from wheels are similar to those from treadmills. In our analysis, the variable WHEEL (coding for measurements made using a wheel *versus* a treadmill) was included in the second-best model (Table 3), but the significance level was not close to 0.05, and the relative importance of WHEEL averaged across all models was quite low. Therefore, we conclude that $\dot{V}_{O_{2,max}}$ was not significantly affected by testing using treadmills *versus* running wheels. We caution, however, that wheel respirometers have thus far been used only for mammals of relatively small body size (1 kg or less) and would likely be too unwieldy for use with large mammals.

We conclude by briefly considering our findings in the context of the decades-old and continuing controversy about the manner in which energy metabolism is – or should be – related to body mass among species of animals (e.g. Kleiber, 1932; McMahon, 1973; Weibel, 1973; Schmidt-Nielsen, 1975; Taylor et al., 1981; Heusner, 1985; McNab, 1988; West et al., 1997; Darveau et al., 2002; West et al., 2002; Chown et al., 2007; Hochachka et al., 2003; Agutter and Wheatley, 2004; Savage et al., 2004; Weibel et al., 2004; Weibel and Hoppeler, 2005; White and Seymour, 2005; White et al., 2009; White and Kearney, 2014). In both vertebrates and invertebrates, the majority of theoretical models of mass scaling of energy metabolism yield a predicted scaling exponent between 2/3 and 3/4, and most of the empirical tests of these models have relied on the very extensive datasets for endotherm BMR (which include hundreds of species of birds and mammals) (White et al., 2006; White et al., 2007) or standard metabolic rate (SMR) in ectotherms. Most analyses of these large BMR or SMR datasets do report interspecific scaling consistent with mass exponents of 2/3 to 3/4 (e.g. Rezende et al., 2004; McKechnie and Wolf, 2004; Chown et al., 2007; White and Kearney, 2013) (but see White et al., 2009).

In contrast, we found a significantly higher mass scaling exponent for mammalian exercise $\dot{V}_{O_{2,max}}$, averaging 0.839 (± 0.022 s.e.) across all models. The species in our study span almost 5 orders of magnitude in mass (7.2 g to 475 kg) and include much of the size range in the mammalian lineage, with the caveat that data are lacking for the largest mammals (e.g. elephants, whales). The most conservative estimate of a 95% confidence interval (CI) for the mass exponent (based on 64 degrees of freedom in the most inclusive model) is 0.795–0.883. That CI excludes the 'universal scaling

constant' of 0.75, but includes the value of 0.809 reported for the large mass range of species analyzed by Taylor et al. (Taylor et al., 1981) (see also Garland and Huey, 1987) and is also consistent with several more recent studies of exercise $\dot{V}_{O_{2,max}}$ in mammals (Weibel et al., 2004; Weibel and Hoppeler, 2005; White and Seymour, 2005; White et al., 2008), all of which report scaling exponents significantly greater than 0.75. In other words, the empirical findings are not consistent with the most commonly considered theoretical constructs of relationships between body mass and metabolic rate. These include geometric similarity (predicting scaling to mass^{2/3}) (Heusner, 1985), elastic similarity (derived from biomechanical properties and predicting scaling to mass^{3/4}) (McMahon, 1973), and the recent and widely discussed concept of scaling imposed by the 3-dimensional fractal geometry of nutrient distribution networks (e.g. West et al., 1997; West et al., 2002; Savage et al., 2004), which also predicts scaling to mass^{3/4} across multiple levels of biological organization. It must also be noted that none of our analyses incorporated estimates of measurement error in the independent variables, and so all of them likely underestimate the true allometric scaling exponent (Ives et al., 2007). Empirically, among species of mammals, the allometric variation of $\dot{V}_{O_{2,max}}$ is directly related to the scaling of the total effective surface areas of mitochondria and capillaries [Weibel et al., 2004; Weibel and Hoppeler, 2005 (and references therein)].

Although the idea of a 'universal scaling constant' is appealing, our analyses (and several others cited above) indicate that no theoretical model, including the recent fractal geometry concept, adequately describes the scaling of maximal aerobic metabolism in mammals. Moreover, we concur with Darveau et al. (Darveau et al., 2002) that the allometry of $\dot{V}_{O_{2,max}}$ is a substantially more rigorous test of scaling 'laws' than analyses based on BMR, as the selective factors and sub-organismal mechanisms responsible for whole-animal aerobic metabolism seem far more likely to be driven by the maximal demands upon the system represented by $\dot{V}_{O_{2,max}}$ (which sets an upper limit to the intensity of work that can be sustained aerobically) than by the 'idling' power requirements represented by BMR. Indeed, it is arguable that BMR is largely an epiphenomenon, unlikely to experience direct selection except in unusual and rare circumstances (e.g. those emphasizing fasting endurance in resting animals in thermoneutrality, or minimization of heat production of resting animals in hot environments) (see also Careau and Garland, 2012) (but see Lovegrove, 2006).

ACKNOWLEDGEMENTS

We thank M. Springer for an electronic version of the Meredith et al. (Meredith et al., 2011) tree, and both the Mammal Research Institute in Bialowieza, Poland, and the Instituto de Ciencias Ambientales y Evolutivas, Universidad Austral de Chile in Valdivia, Chile, for hosting M.A.C. during part of the study.

AUTHOR CONTRIBUTIONS

T.G., M.A.C., E.M.D. and T.H.M. conceived and designed the study, and drafted the article. All authors were involved in the execution of the study, interpretation of the findings and revising the article.

COMPETING INTERESTS

No competing interests declared.

FUNDING

This study was supported in part by the University of California, Riverside Academic Senate, a Biomedical Research Support Grant from University of California, Davis to J.H.J., a Marie Curie Transfer of Knowledge project BIORESC within the European Commission's 6th Framework Programme (contract no. MTKD-CT-2005-029957) to M.A.C., a University of São Paulo and Conselho Nacional de Desenvolvimento Científico e Tecnológico – CNPq, Brazil to J.E.P.W.B., the Polish Committee for Scientific Research (2 P04F 01329 to P.A.S.), and National Science Foundation (NSF) IOS-1121273 to T.G.

REFERENCES

- Agutter, P. S. and Wheatley, D. N. (2004). Metabolic scaling: consensus or controversy? *Theor. Biol. Med. Model.* **1**, 13.
- Alexander, L. F. and Riddle, B. R. (2005). Phylogenetics of the new world rodent family Heteromyidae. *J. Mammal.* **86**, 366-379.
- Anderson, D. R. (2008). *Model Based Inference in the Life Sciences: a Primer on Evidence*. New York, NY: Springer.
- Banbury, J. L. and Spicer, G. S. (2007). Molecular systematics of chipmunks (Neotamias) inferred by mitochondrial control region sequences. *J. Mamm. Evol.* **14**, 149-162.
- Bardeleben, C., Moore, R. L. and Wayne, R. K. (2005). A molecular phylogeny of the Canidae based on six nuclear loci. *Mol. Phylogenet. Evol.* **37**, 815-831.
- Bartholomew, G. A., Vleck, D. and Vleck, C. M. (1981). Instantaneous measurements of oxygen consumption during pre-flight warm-up and post-flight cooling in sphingid and saturniid moths. *J. Exp. Biol.* **90**, 17-32.
- Bicudo, J. E. P. W., Longworth, K. E., Jones, J. H., Taylor, C. R. and Hoppeler, H. (1996). Structural determinants of maximal O₂ transport in muscles of exercising foxes. *Respir. Physiol.* **103**, 243-251.
- Bininda-Emonds, O. R. P., Cardillo, M., Jones, K. E., MacPhee, R. D. E., Beck, R. M. D., Grenyer, R., Price, S. A., Vos, R. A., Gittleman, J. L. and Purvis, A. (2007). The delayed rise of present-day mammals. *Nature* **446**, 507-512.
- Bloomberg, S. P., Garland, T., Jr and Ives, A. R. (2003). Testing for phylogenetic signal in comparative data: behavioral traits are more labile. *Evolution* **57**, 717-745.
- Burnham, K. P. and Anderson, D. R. (2002). *Model Selection and Inference: A Practical Information-Theoretical Approach*. New York, NY: Springer-Verlag.
- Careau, V. and Garland, T., Jr (2012). Performance, personality, and energetics: correlation, causation, and mechanism. *Physiol. Biochem. Zool.* **85**, 543-571.
- Chaline, J. and Graf, J. (1988). Phylogeny of the Arvicolidae (Rodentia): biochemical and paleontological evidence. *J. Mammal.* **69**, 22-33.
- Chappell, M. A. and Bachman, G. C. (1995). Aerobic performance in Belding's ground squirrels, *Spermophilus beldingi*: variance, ontogeny, and the aerobic capacity model of endothermy. *Physiol. Zool.* **68**, 421-442.
- Chappell, M. A. and Dlugosz, E. M. (2009). Aerobic capacity and running performance across a 1.6 km altitude difference in two sciurid rodents. *J. Exp. Biol.* **212**, 610-619.
- Chappell, M. A. and Snyder, L. R. G. (1984). Biochemical and physiological correlates of deer mouse alpha-chain hemoglobin polymorphisms. *Proc. Natl. Acad. Sci. USA* **81**, 5484-5488.
- Chappell, M. A., Bachman, G. C. and Odell, J. P. (1995). Repeatability of maximal aerobic performance in Belding's ground squirrels, *Spermophilus beldingi*. *Funct. Ecol.* **9**, 498-504.
- Chappell, M. A., Garland, T., Jr, Rezende, E. L. and Gomes, F. R. (2004). Voluntary running in deer mice: speed, distance, energy costs and temperature effects. *J. Exp. Biol.* **207**, 3839-3854.
- Chappell, M. A., Garland, T., Jr, Robertson, G. F. and Saltzman, W. (2007). Relationships among running performance, aerobic physiology and organ mass in male Mongolian gerbils. *J. Exp. Biol.* **210**, 4179-4197.
- Chown, S. L., Marais, E., Terblanche, J. S., Klok, C. J., Lighton, J. R. B. and Blackburn, T. M. (2007). Scaling of insect metabolic rate is inconsistent with the nutrient supply network model. *Funct. Ecol.* **21**, 282-290.
- Churakov, G., Sadasivuni, M. K., Rosenbloom, K. R., Huchon, D., Brosius, J. and Schmitz, J. (2010). Rodent evolution: back to the root. *Mol. Biol. Evol.* **27**, 1315-1326.
- Darveau, C.-A., Suarez, R. K., Andrews, R. D. and Hochachka, P. W. (2002). Allometric cascade as a unifying principle of body mass effects on metabolism. *Nature* **417**, 166-170.
- Dawson, T. J., Mifsud, B., Raad, M. C. and Webster, K. N. (2004). Aerobic characteristics of red kangaroo skeletal muscles: is a high aerobic capacity matched by muscle mitochondrial and capillary morphology as in placental mammals? *J. Exp. Biol.* **207**, 2811-2821.
- Dlugosz, E. M., Chappell, M. A., McGillivray, D. G., Syme, D. A. and Garland, T., Jr (2009). Locomotor trade-offs in mice selectively bred for high voluntary wheel running. *J. Exp. Biol.* **212**, 2612-2618.
- Dlugosz, E. M., Harris, B. N., Saltzman, W. and Chappell, M. A. (2012). Glucocorticoids, aerobic physiology, and locomotor behavior in California mice. *Physiol. Biochem. Zool.* **85**, 671-683.
- Dohm, M. R., Richardson, C. S. and Garland, T., Jr (1994). Exercise physiology of wild and random-bred laboratory house mice and their reciprocal hybrids. *Am. J. Physiol.* **267**, R1098-R1108.
- Elsner, R. and Ashwell-Erikson, S. (1982). Maximum oxygen consumption of exercising harbor seals. *Physiologist* **25**, 279.
- Fedak, M. A., Rome, L. and Seeherman, H. J. (1981). One-step N₂-dilution technique for calibrating open-circuit VO₂ measuring systems. *J. Appl. Physiol.* **51**, 772-776.
- Garland, T., Jr and Adolph, S. C. (1994). Why not to do two-species comparative studies: limitations on inferring adaptation. *Physiol. Zool.* **67**, 797-828.
- Garland, T., Jr and Huey, R. B. (1987). Testing symmorphosis: does structure match functional requirements? *Evolution* **41**, 1404-1409.
- Garland, T., Jr and Ives, A. R. (2000). Using the past to predict the present: confidence intervals for regression equations in phylogenetic comparative methods. *Am. Nat.* **155**, 346-364.
- Garland, T., Jr and Janis, C. M. (1993). Does metatarsal/femur ratio predict maximal running speed in cursorial mammals? *J. Zool. (Lond.)* **229**, 133-151.
- Garland, T., Jr, Dickerman, A. W., Janis, C. W. and Jones, J. A. (1993). Phylogenetic analysis of covariance by computer simulation. *Syst. Biol.* **42**, 265-292.
- Garland, T., Jr, Bennett, A. F. and Rezende, E. L. (2005). Phylogenetic approaches in comparative physiology. *J. Exp. Biol.* **208**, 3015-3035.
- Gartner, G. E. A., Hicks, J. W., Manzani, P. R., Andrade, D. V., Abe, A. S., Wang, T., Secor, S. M. and Garland, T., Jr (2010). Phylogeny, ecology, and heart position in snakes. *Physiol. Biochem. Zool.* **83**, 43-54.
- Gaustad, S. E., Rolim, N. and Wisløff, U. (2010). A valid and reproducible protocol for testing maximal oxygen uptake in rabbits. *Eur. J. Cardiovasc. Prev. Rehabil.* **17**, 83-88.
- Hafner, J. C., Light, J. E., Hafner, D. J., Hafner, M. S., Reddington, E., Roger, D. S. and Riddle, B. R. (2007). Basal clades and molecular systematics of heteromyid rodents. *J. Mammal.* **88**, 1129-1145.
- Harrison, R. G., Bogdanowicz, S. M., Hoffmann, R. S., Yensen, E. and Sherman, P. W. (2003). Phylogeny and evolutionary history of the ground squirrels (Rodentia: Marmotinae). *J. Mamm. Evol.* **10**, 249-276.
- Helgen, K. M., Cole, F. R., Helgen, L. E. and Wilson, D. E. (2009). Generic revision in the holarctic ground squirrel genus *Spermophilus*. *J. Mammal.* **90**, 270-305.
- Heusner, A. A. (1985). Body size and energy metabolism. *Annu. Rev. Nutr.* **5**, 267-293.
- Hiernaux, J. and Ghesquiere, J. (1981). Statistical methods for studying the relationship between maximum aerobic power and body weight: comparison between Twa and Oto of the lake Tumba area (Zaire). *J. Hum. Evol.* **10**, 627-631.
- Hillman, S. S., Hancock, T. V. and Hedrick, M. S. (2013). A comparative meta-analysis of maximal aerobic metabolism of vertebrates: implications for respiratory and cardiovascular limits to gas exchange. *J. Comp. Physiol. B* **183**, 167-179.
- Hochachka, P. W., Darveau, C.-A., Andrews, R. D. and Suarez, R. K. (2003). Allometric cascade: a model for resolving body mass effects on metabolism. *Comp. Biochem. Physiol.* **134A**, 675-691.
- Hoppeler, H., Lüthi, P., Claassen, H., Weibel, E. R. and Howald, H. (1973). The ultrastructure of the normal human skeletal muscle. A morphometric analysis on untrained men, women and well-trained orienteers. *Pflügers Arch.* **344**, 217-232.
- Ives, A. R., Midford, P. E. and Garland, T., Jr (2007). Within-species variation and measurement error in phylogenetic comparative methods. *Syst. Biol.* **56**, 252-270.
- Jones, J. H. (1998). Optimization of the mammalian respiratory system: symmorphosis versus single species adaptation. *Comp. Biochem. Physiol.* **120B**, 125-138.
- Jones, J. H. and Lindstedt, S. L. (1993). Limits to maximal performance. *Annu. Rev. Physiol.* **55**, 547-569.
- Kayar, S. R., Hoppeler, H., Lindstedt, S. L., Claassen, H., Jones, J. H., Essen-Gustavsson, B. and Taylor, C. R. (1989). Total muscle mitochondrial volume in relation to aerobic capacity of horses and steers. *Pflügers Arch.* **413**, 343-347.
- Kemi, O. J., Loennechen, J. P., Wisløff, U. and Ellingsen, Ø. (2002). Intensity-controlled treadmill running in mice: cardiac and skeletal muscle hypertrophy. *J. Appl. Physiol.* **93**, 1301-1309.
- Kleiber, M. (1932). Body size and metabolism. *Hilgardia* **6**, 315-353.
- Konarzewski, M. and Książek, A. (2013). Determinants of intra-specific variation in basal metabolic rate. *J. Comp. Physiol. B* **183**, 27-41.
- Lavin, S. R., Karasov, W. H., Ives, A. R., Middleton, K. M. and Garland, T., Jr (2008). Morphometrics of the avian small intestine compared with that of nonflying mammals: a phylogenetic approach. *Physiol. Biochem. Zool.* **81**, 526-550.
- Levine, B. D. (2008). VO_{2max}: what do we know, and what do we still need to know? *J. Physiol.* **586**, 25-34.
- Lindstedt, S. L., Hokanson, J. F., Wells, D. J., Swain, S. D., Hoppeler, H. and Navarro, V. (1991). Running energetics in the pronghorn antelope. *Nature* **353**, 748-750.
- Longworth, K. E., Jones, J. H., Bicudo, J. E. P. W., Taylor, C. R. and Weibel, E. R. (1989). High rate of O₂ consumption in exercising foxes: large PO₂ difference drives diffusion across the lung. *Respir. Physiol.* **77**, 263-276.
- Lovegrove, B. G. (2006). The power of fitness in mammals: perceptions from the African slipstream. *Physiol. Biochem. Zool.* **79**, 224-236.
- Lutton, L. M. and Hudson, J. W. (1980). Running performance of the thirteen-lined ground squirrel, the eastern chipmunk, and the albino Norway rat. *Comp. Biochem. Physiol.* **65A**, 85-90.
- MacMillen, R. E. and Hinds, D. S. (1992). Standard, cold induced and exercise-induced metabolism of rodents. In *Mammalian Energetics: Interdisciplinary Views of Metabolism and Reproduction* (ed. T. E. Tomasi and T. H. Horton), pp. 16-33. Ithaca, NY: Comstock Publishing Associates.
- Maddison, W. P. and Maddison, D. R. (2009). *Mesquite: a Modular System for Evolutionary Analysis*. <http://mesquiteproject.org>.
- Martin, Y., Gerlach, G., Schlötterer, C. and Meyer, A. (2000). Molecular phylogeny of European murid rodents based on complete cytochrome b sequences. *Mol. Phylogenet. Evol.* **16**, 37-47.
- McKechnie, A. E. and Wolf, B. O. (2004). The allometry of avian basal metabolic rate: good predictions need good data. *Physiol. Biochem. Zool.* **77**, 502-521.
- McMahon, T. (1973). Size and shape in biology. *Science* **179**, 1201-1204.
- McNab, B. K. (1988). Complications inherent in scaling the basal rate of metabolism in mammals. *Q. Rev. Biol.* **63**, 25-54.
- McNab, B. K. (1992). A statistical analysis of mammalian rates of metabolism. *Funct. Ecol.* **6**, 672-679.

- Meredith, R. W., Westerman, M. and Springer, M. S. (2008). A phylogeny and timescale for the living genera of kangaroos and kin (Macropodiformes: Marsupialia) based on nuclear DNA sequences. *Aust. J. Zool.* **56**, 395-410.
- Meredith, R. W., Janečka, J. E., Gatesy, J., Ryder, O. A., Fisher, C. A., Teeling, E. C., Goodbla, A., Eizirik, E., Simão, T. L. L., Stadler, T. et al. (2011). Impacts of the Cretaceous terrestrial revolution and KPg extinction on mammal diversification. *Science* **334**, 521-524.
- Michaux, J. R., Chevret, P., Filippucci, M.-G. and Macholan, M. (2002). Phylogeny of the genus *Apodemus* with a special emphasis on the subgenus *Sylvaemus* using the nuclear IRBP gene and two mitochondrial markers: cytochrome *b* and 12S rRNA. *Mol. Phylogenet. Evol.* **23**, 123-136.
- Muñoz-García, A. and Williams, J. B. (2005). Basal metabolic rate in carnivores is associated with diet after controlling for phylogeny. *Physiol. Biochem. Zool.* **78**, 1039-1056.
- Nieto, J. E., Snyder, J. R., Vatisstas, N. J. and Jones, J. H. (2009). Effect of gastric ulceration on physiologic responses to exercise in horses. *Am. J. Vet. Res.* **70**, 787-795.
- Noakes, T. D. (2011). Time to move beyond a brainless exercise physiology: the evidence for complex regulation of human exercise performance. *Appl. Physiol. Nutr. Metab.* **36**, 23-35.
- Nowak, R. M. (1999). *Walker's Mammals of the World*, 6th edn. Johns Hopkins University, MD: Johns Hopkins University Press.
- Nunn, C. L. (2011). *The Comparative Approach in Evolutionary Anthropology and Biology*. University of Chicago, IL: University of Chicago Press.
- Nyakatura, K. and Bininda-Emonds, O. R. P. (2012). Updating the evolutionary history of Carnivora (Mammalia): a new species-level supertree complete with divergence time estimates. *BMC Biol.* **10**, 12.
- Ohmura, H., Mukai, K., Takahashi, T., Matsui, A., Hiraga, A. and Jones, J. H. (2010). Comparison of net anaerobic energy utilisation estimated by plasma lactate accumulation rate and accumulated oxygen deficit in Thoroughbred horses. *Equine Vet. J. Suppl.* **42**, 62-69.
- Ong, T. C. (1993). A comparative study of the aerobic fitness of 421 healthy adult males in Singapore. *J. Sports Sci.* **11**, 71-76.
- Page, M. D. (1992). A method for the analysis of comparative data. *J. Theor. Biol.* **156**, 431-442.
- Pasquis, P., Lacaille, A. and Dejours, P. (1970). Maximal oxygen uptake in four species of small mammals. *Respir. Physiol.* **9**, 298-309.
- Prothero, D. R. and Foss, S. E. (2007). *The Evolution of Artiodactyls*. Johns Hopkins University, MD: Johns Hopkins University Press.
- Revell, L. J., Harmon, L. J. and Collar, D. C. (2008). Phylogenetic signal, evolutionary process, and rate. *Syst. Biol.* **57**, 591-601.
- Rezende, E. L. and Diniz-Filho, J. A. F. (2012). Phylogenetic analyses: comparing species to infer adaptations and physiological mechanisms. *Compr. Physiol.* **2**, 639-674.
- Rezende, E. L., Bozinovic, F. and Garland, T., Jr (2004). Climatic adaptation and the evolution of basal and maximum rates of metabolism in rodents. *Evolution* **58**, 1361-1374.
- Rezende, E. L., Gomes, F. R., Malisch, J. L., Chappell, M. A. and Garland, T., Jr (2006). Maximal oxygen consumption in relation to subordinate traits in lines of house mice selectively bred for high voluntary wheel running. *J. Appl. Physiol.* **101**, 477-485.
- Robovský, J., Ricankova, V. and Zrzavy, J. (2008). Phylogeny of Arvicolinae (Mammalia, Cricetidae): utility of morphological and molecular data sets in a recently radiating clade. *Zool. Scr.* **37**, 571-590.
- Rubner, M. (1883). Über den einfluss der körpergrösse auf stoff- und kraftwechsel. *Z. Biol.* **19**, 536-562.
- Sadowska, E. (2009). Evolution of metabolic rate: heritability, genetic correlations and the effects of artificial selection in the bank vole (*Clethrionomys glareolus*). PhD thesis, Jagiellonian University, Krakow, Poland.
- Sadowska, E. T., Labocha, M. K., Baliga, K., Stanis, A., Wróblewska, A. K., Jagusiak, W. and Koteja, P. (2005). Genetic correlations between basal and maximum metabolic rates in a wild rodent: consequences for evolution of endothermy. *Evolution* **59**, 672-681.
- Savage, V. M., Gillooly, J. F., Woodruff, W. H., West, G. B., Allen, A. P., Enquist, B. J. and Brown, J. H. (2004). The predominance of quarter-power scaling in biology. *Funct. Ecol.* **18**, 257-282.
- Schaeffer, P. J., Hokanson, J. F., Wells, D. J. and Lindstedt, S. L. (2001). Cold exposure increases running $\dot{V}_{O_{2,max}}$ and cost of transport in goats. *Am. J. Physiol.* **280**, R42-R47.
- Schmidt-Nielsen, K. (1975). Scaling in biology: the consequences of size. *J. Exp. Zool.* **194**, 287-307.
- Seeherman, H. J., Taylor, C. R., Maloij, G. M. O. and Armstrong, R. B. (1981). Design of the mammalian respiratory system. II. Measuring maximum aerobic capacity. *Respir. Physiol.* **44**, 11-23.
- Segren, N. P. and Hart, J. S. (1967). Oxygen supply and performance in *Peromyscus*: metabolic and circulatory responses to exercise. *Can. J. Physiol. Pharmacol.* **45**, 531-541.
- Sobrero, R., May-Collado, L. J., Agnarsson, I. and Hernández, C. E. (2011). Expensive brains: 'brainy' rodents have higher metabolic rate. *Front. Evol. Neurosci.* **3**, 2.
- Spurway, N. C., Ekblom, B., Noakes, T. D. and Wagner, P. D. (2012). What limits $[V(\cdot)]O_{2,max}$? *J. Sports Sci.* **30**, 517-531.
- Steppan, S. J., Adkins, R. M., Spinks, P. Q. and Hale, C. (2005). Multigene phylogeny of the Old World mice, Murinae, reveals distinct geographic lineages and the declining utility of mitochondrial genes compared to nuclear genes. *Mol. Phylogenet. Evol.* **37**, 370-388.
- Taylor, C. R., Maloij, G. M. O., Weibel, E. R., Langman, V. A., Kamau, J. M., Seeherman, H. J. and Heglund, N. C. (1981). Design of the mammalian respiratory system. III Scaling maximum aerobic capacity to body mass: wild and domestic mammals. *Respir. Physiol.* **44**, 25-37.
- Thomas, S. P. and Suthers, R. A. (1972). The physiology and energetics of bat flight. *J. Exp. Biol.* **57**, 317-335.
- Veniaminova, N. A., Vassetzky, N. S., Lavrenchenko, L. A., Popov, S. V. and Kramerov, D. A. (2007). Phylogeny of the Order Rodentia inferred from structural analysis of short retroposon B1. *Russ. J. Genet.* **43**, 757-768.
- Wagner, P. D. (2011). Modeling O_2 transport as an integrated system limiting $\dot{V}_{O_{2,max}}$. *Comput. Methods Programs Biomed.* **101**, 109-114.
- Wagner, P. D. (2012). Muscle intracellular oxygenation during exercise: optimization for oxygen transport, metabolism, and adaptive change. *Eur. J. Appl. Physiol.* **112**, 1-8.
- Weibel, E. R. (1973). Morphological basis of alveolar-capillary gas exchange. *Physiol. Rev.* **53**, 419-495.
- Weibel, E. R. and Hoppeler, H. (2005). Exercise-induced maximal metabolic rate scales with muscle aerobic capacity. *J. Exp. Biol.* **208**, 1635-1644.
- Weibel, E. R., Taylor, C. R., O'Neil, J. J., Leith, D. E., Gehr, P., Hoppeler, H., Langman, V. and Baudinette, R. V. (1983). Maximal oxygen consumption and pulmonary diffusing capacity: a direct comparison of physiologic and morphometric measurements in canids. *Respir. Physiol.* **54**, 173-188.
- Weibel, E. R., Taylor, C. R. and Hoppeler, H. (1991). The concept of symmorphosis: a testable hypothesis of structure-function relationship. *Proc. Natl. Acad. Sci. USA* **88**, 10357-10361.
- Weibel, E. R., Taylor, C. R. and Hoppeler, H. (1992). Variations in function and design: testing symmorphosis in the respiratory system. *Respir. Physiol.* **87**, 325-348.
- Weibel, E. R., Bacigalupe, L. D., Schmitt, B. and Hoppeler, H. (2004). Allometric scaling of maximal metabolic rate in mammals: muscle aerobic capacity as determinant factor. *Respir. Physiol. Neurobiol.* **140**, 115-132.
- West, G. B., Brown, J. H. and Enquist, B. J. (1997). A general model for the origin of allometric scaling laws in biology. *Science* **276**, 122-126.
- West, G. B., Woodruff, W. H. and Brown, J. H. (2002). Allometric scaling of metabolic rate from molecules and mitochondria to cells and mammals. *Proc. Natl. Acad. Sci. USA* **99** Suppl. 1, 2473-2478.
- White, C. R. and Kearney, M. R. (2013). Determinants of inter-specific variation in basal metabolic rate. *J. Comp. Physiol. B* **183**, 1-26.
- White, C. R. and Kearney, M. R. (2014). Metabolic scaling in animals: methods, empirical results, and theoretical explanations. *Comp. Physiol.* (in press).
- White, C. R. and Seymour, R. S. (2005). Allometric scaling of mammalian metabolism. *J. Exp. Biol.* **208**, 1611-1619.
- White, C. R., Matthews, P. G. D. and Seymour, R. S. (2006). Balancing the competing requirements of saltatorial and fossorial specialisation: burrowing costs in the spinifex hopping mouse, *Notomys alexis*. *J. Exp. Biol.* **209**, 2103-2113.
- White, C. R., Blackburn, T. M., Martin, G. R. and Butler, P. J. (2007). Basal metabolic rate of birds is associated with habitat temperature and precipitation, not primary productivity. *Proc. Biol. Sci.* **274**, 287-293.
- White, C. R., Terblanche, J. S., Kabat, A. P., Blackburn, T. M., Chown, S. L. and Butler, P. J. (2008). Allometric scaling of maximum metabolic rate: the influence of temperature. *Funct. Ecol.* **22**, 616-623.
- White, C. R., Blackburn, T. M. and Seymour, R. S. (2009). Phylogenetically informed analysis of the allometry of mammalian basal metabolic rate supports neither geometric nor quarter-power scaling. *Evolution* **63**, 2658-2667.
- Williams, T. M. (1983). Locomotion in the North American mink, a semi-aquatic mammal. II. The effect of an elongate body on running energetics and gait patterns. *J. Exp. Biol.* **105**, 283-295.
- Williams, T. M., Friedl, W. A. and Haun, J. E. (1993). The physiology of bottlenose dolphins (*Tursiops truncatus*): heart rate, metabolic rate and plasma lactate concentration during exercise. *J. Exp. Biol.* **179**, 31-46.
- Wunder, B. A. (1970). Energetics of running activity in Merriam's chipmunk, *Eutamias merriami*. *Comp. Biochem. Physiol.* **33**, 821-836.