

# UC Irvine

## UC Irvine Previously Published Works

### Title

Expression of Nek1 during kidney development and cyst formation in multiple nephron segments in the Nek1-deficient kat2J mouse model of polycystic kidney disease

### Permalink

<https://escholarship.org/uc/item/0hk7b5z0>

### Journal

Journal of Biomedical Science, 21(1)

### ISSN

1021-7770

### Authors

Chen, Yumay  
Chiang, Huai-Chin  
Litchfield, Patricia  
et al.

### Publication Date

2014-12-01

### DOI

10.1186/s12929-014-0063-5

Peer reviewed

RESEARCH

Open Access

# Expression of Nek1 during kidney development and cyst formation in multiple nephron segments in the Nek1-deficient kat2J mouse model of polycystic kidney disease

Yumay Chen<sup>1\*</sup>, Huai-Chin Chiang<sup>2</sup>, Patricia Litchfield<sup>2</sup>, Michelle Pena<sup>2</sup>, Charity Juang<sup>1</sup> and Daniel J Riley<sup>2,3,4\*</sup>

## Abstract

**Background:** Neks, mammalian orthologs of the fungal protein kinase never-in-mitosis A, have been implicated in the pathogenesis of polycystic kidney disease. Among them, Nek1 is the primary protein inactivated in kat2J mouse models of PKD.

**Result:** We report the expression pattern of Nek1 and characterize the renal cysts that develop in kat2J mice. Nek1 is detectable in all murine tissues but its expression in wild type and kat2J heterozygous kidneys decrease as the kidneys mature, especially in tubular epithelial cells. In the embryonic kidney, Nek1 expression is most prominent in cells that will become podocytes and proximal tubules. Kidney development in kat2J homozygous mice is aberrant early, before the appearance of gross cysts: developing cortical zones are thin, populated by immature glomeruli, and characterized by excessive apoptosis of several cell types. Cysts in kat2J homozygous mice form postnatally in Bowman's space as well as different tubular subtypes. Late in life, kat2J heterozygous mice form renal cysts and the cells lining these cysts lack staining for Nek1. The primary cilia of cells lining cysts in kat2J homozygous mice are morphologically diverse: in some cells they are unusually long and in others there are multiple cilia of varying lengths.

**Conclusion:** Our studies indicate that Nek1 deficiency leads to disordered kidney maturation, and cysts throughout the nephron.

**Keywords:** Kidney development, Primary cilium, Centromere

## Background

Animal models of polycystic kidney disease (PKD) have been invaluable in discovering and dissecting cellular and molecular pathways by which polycystic kidneys develop and by which progression of all types of PKD may be modified [1,2]. Two murine models of polycystic kidney disease, the so-called kidneys-anemia-testes (kat and kat2J) mice [3], have been linked genetically to the locus encoding Nek1 protein kinase [4]. The kat and kat2J Nek1 mutations cause pleiotropic effects, including perinatal mortality in some pups, growth retardation, facial

dysmorphism, abnormalities in the choroid plexus, PKD, and early death with or from progressive renal failure.

Nek1 is a mammalian ortholog of the fungal kinase NIMA (never in mitosis A in *Aspergillus nidulans*), which functions in DNA damage responses, regulates G2-M phase progression, and helps keep chromosome transmission to daughter cells faithful [5-10]. When cells are deficient in NIMA or in certain NIMA-related kinases, they undergo apoptosis because of major errors in chromosome segregation. Nek1 was identified as the first mammalian NIMA-related kinase. Partial cloning of the murine gene was accomplished using anti-phospho-tyrosine antibodies and reported more than fifteen years ago [11]. The kinase domain of Nek1, when expressed from bacteria, has dual serine-threonine and tyrosine kinase activity in vitro. Mechanisms by which Nek1 might normally function in a

\* Correspondence: yumayc@uci.edu; rileyd@uthscsa.edu

<sup>1</sup>Department of Medicine, Division of Endocrinology, University of California, Gross Hall 1130, Mail Code, 4086, Irvine, CA 92697, USA

<sup>2</sup>Department of Medicine, Division of Nephrology, The University of Texas Health Science Center at San Antonio, San Antonio, USA

Full list of author information is available at the end of the article

pathway to prevent the development of PKD are only beginning to be elucidated. We discovered that Nek1 is crucial for proper DNA damage responses and repair after injury [12-14], and that it limits injury in part by phosphorylating and controlling the VDAC1 channel that initiates mitochondrial apoptosis [15,16].

Early reports described the cloning of murine Nek1 examined expression of mRNA by in situ analysis in murine gonads, and suggested that the abundant expression in both male and female germ cells was consistent with a role for Nek1 in meiosis [11,17]. In situ analysis of kidney sections was not specifically reported. Tissue or cell-specific expression of the Nek1 protein was never reported, since no anti-Nek1 antibodies were available then, and the association of Nek1 with pleiotropic abnormalities including PKD was not made in mice until later [4].

As an important step in the characterization of how Nek1 may be involved in renal development and how its absence may lead to renal cystogenesis or cyst progression, we examined the expression pattern of Nek1 in normal, developing, and diseased mouse kidneys. Here we report that Nek1 is expressed most strongly in the distinct subset of renal epithelial cells. Its expression is developmentally regulated, such that it wanes as the kidney matures. Kidney development in *kat2J/Nek1*<sup>-/-</sup> mice is aberrant early, before the appearance of gross cysts: developing cortical zones are thin, populated by immature glomeruli, and characterized by excessive apoptosis of several cell types. Cysts in *kat2J/Nek1*<sup>-/-</sup> mice form postnatally in Bowman's space as well as different tubular subtypes. Late in life, even *kat2J/Nek1*<sup>+/-</sup> mice form renal cysts and the cells lining these cysts lack staining for Nek1. The primary cilia of cells lining cysts in *kat2J/Nek1*<sup>-/-</sup> mice are morphologically diverse: in some cells they are unusually long and in others there are multiple cilia of varying lengths. Our studies indicate that Nek1 deficiency leads to disordered kidney maturation, and to cysts formation throughout the nephron.

## Methods

### Kat2J mice and genotyping

C57Bl/6 *J-Nek1kat2J*<sup>+/-</sup> founder mice were obtained from The Jackson Laboratory (Bar Harbor, ME) and designated as the F0 generation. At F4, *kat2J*<sup>+/-</sup> males were mated with wild -type C57Bl/6 J females to generate F5. The resulting *kat2J*<sup>+/-</sup> mice were intercrossed until F8, when *kat2J*<sup>+/-</sup> males were mated with wild -type C57Bl/6 J females again. The *kat2J* colony was then maintained in this mating cycle. Genotyping for the *kat2J/Nek1* mutation was done as previously described [13,14,18], with one modification: the primers used in the PCR reaction were not labeled with an isotope. The PCR products were loaded onto a 9% acrylamide, 10% glycerol, 1x Tris/Borate/EDTA (TBE) buffer gel and subjected to electrophoresis for 2.5 hours at 40 W in 0.5x TBE buffer. The resulting gels were then

stained with 4x Gel Red and analyzed with a UVP gel image system. All animal experiments were carried out in an ethical manner, in accordance with the protocols approved by the IACUC committees at University of Texas Health Science Center at San Antonio (protocol number: 01069B-34-03-A) and University of California, Irvine (protocol number: 2009-2899).

### Antibodies and lectins

Details of anti-Nek1 antibody generation and purification have been reported elsewhere [15,18]. The anti-Nek1 antibodies used were rabbit polyclonals. We have characterized the specificity of these antibodies with western blots and immunohistochemistry, using appropriate controls (pre-immune serum, secondary antibodies alone, and lack of specific staining in *kat2J/Nek1*<sup>-/-</sup> mouse kidneys) [15,18]. Primary antibodies used in this study included rabbit anti-Nek1 (final concentration 10 µg/ml), anti-p84 mAb 5E10 (3 µg/ml) [19] (Genetex), anti-WT-1 (1:10 dilution, Santa Cruz), anti-PCNA (3 µg/ml, Santa Cruz, 1:250, Bethyl) and TUNEL reagents (Roche), anti-Tamm-Horsfall glycoprotein (1:50, Sigma-Aldrich), and anti-aquaporin-2 (1:100, Sigma-Aldrich). Peroxidase-labeled, secondary, anti-mouse, anti-rabbit and anti-Goat IgG antibodies and immuno-peroxidase-based ABC development kits were purchased from Vector Laboratories. Biotin-labeled *Lotus tetragonolobus* and *Dolichos biflorus* lectins (Sigma-Aldrich) were used at dilutions of 10 µg/ml and color was developed directly with the ABC peroxidase kit (Vector), i.e., without any antibodies.

### Tissue preparation and histology

Kidneys were harvested immediately after mice were sacrificed humanely. Specimens were fixed overnight in 10% neutral buffered formalin at 4°C. After progressive dehydration and embedding in paraffin, 3-µm sections were stained with Mayer's hematoxylin and eosin reagents (Sigma-Aldrich). For immunohistochemical staining, 4-µm kidney or embryo sections on slides were deparaffinized with Histoclear (National Diagnostics) and rehydrated with graded ethanol. Immunoperoxidase-stained sections were counter-stained with methyl green to identify nuclei. For obtaining mouse embryonic tissues, timed matings of C57BL/6 mice were set up and embryos were harvested from sacrificed pregnant females at precise intervals thereafter. Post-coital day 0.5 was when the vaginal plug was identified in the impregnated female. Newborn mice were sacrificed within 24 hours of birth, and controls were always compared from the same litters.

### Scanning Electron Microscopy

Kidney samples were fixed in 4% neutral buffered formaldehyde/ 1% glutaraldehyde (pH 7.4) overnight at 4°C, then washed in 0.1 M phosphate buffer, post fixed in 1%

Zetterqvist's osmium tetroxide for 30 minutes, dehydrated with graded ethyl alcohols, and dried in a critical point dryer. Fractured sections were mounted, sputter-coated with gold and viewed with a Zeiss Leo 435 VP scanning electron microscope in the secondary electrons mode for topographical imaging [20]. The representative photomicrographs were taken with a digital camera.

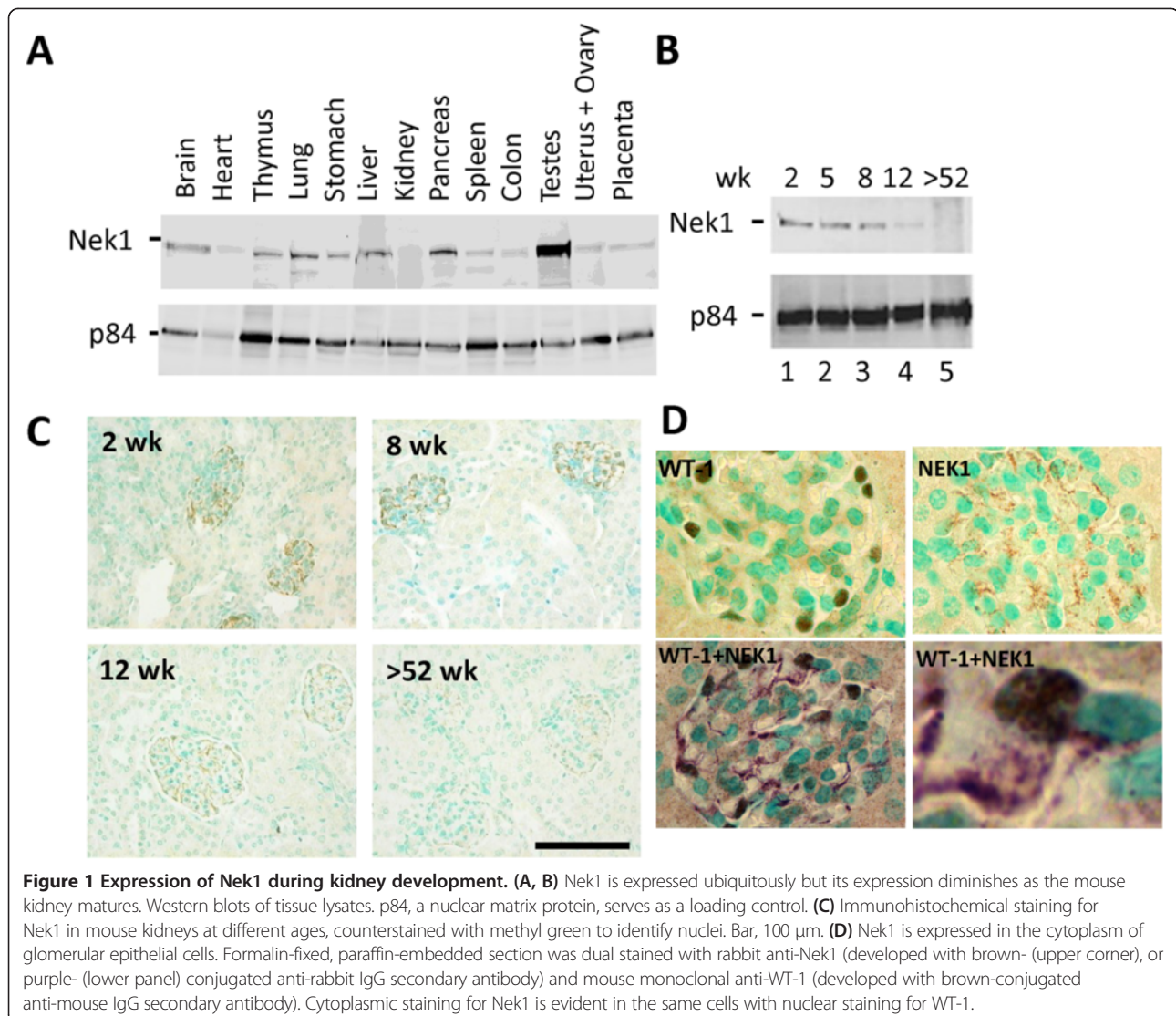
## Results

### Nek1 expression in the normal mouse kidney

We generated anti-Nek1 antibodies and characterized them extensively for their specificity [15,18]. To determine which organs express Nek1, we looked at Nek1 protein from adult mouse tissue lysates by immunoblotting analysis. Nek1 is expressed in all organs examined, but its expression is not very abundant in the mature kidney compared to other organs (Figure 1A). Other proteins functionally inactivated in PKD, including polycystins, are likewise expressed only

weakly in the normal adult kidney, and only in a subset of kidney cells [21-26]. To know whether Nek1 expression is regulated during kidney development and maturation, we also examined protein lysates from kidneys of mice at different ages. The expression of Nek1 decreases significantly as the post-natal kidney matures (Figure 1B).

To clarify observations made by immunoblotting proteins separated from whole kidney lysates, and to determine which subsets of kidney cells express Nek1 most abundantly, we further examined mouse kidney sections by immunohistochemistry (IHC) (Figure 1C). Anti-Nek1 antibodies strongly stained glomerular epithelial cells (podocytes). They also stained several subtypes of tubular epithelial cells less strongly, including those that comprise proximal tubules. Nek1 expression in glomerular epithelial cells, although it also waned as the kidneys aged, was relatively strong in both immature and mature kidneys. Expression of Nek1 in tubular epithelial cells, in contrast,



**Figure 1 Expression of Nek1 during kidney development.** (A, B) Nek1 is expressed ubiquitously but its expression diminishes as the mouse kidney matures. Western blots of tissue lysates. p84, a nuclear matrix protein, serves as a loading control. (C) Immunohistochemical staining for Nek1 in mouse kidneys at different ages, counterstained with methyl green to identify nuclei. Bar, 100  $\mu$ m. (D) Nek1 is expressed in the cytoplasm of glomerular epithelial cells. Formalin-fixed, paraffin-embedded section was dual stained with rabbit anti-Nek1 (developed with brown- (upper corner), or purple- (lower panel) conjugated anti-rabbit IgG secondary antibody) and mouse monoclonal anti-WT-1 (developed with brown-conjugated anti-mouse IgG secondary antibody). Cytoplasmic staining for Nek1 is evident in the same cells with nuclear staining for WT-1.



was much more prominent in the immature mouse kidney than in the adult kidney. The specificity of the immunostaining was assured by repeating the experiment with pre-immune rabbit serum (not shown and [18]). These IHC results are consistent with the results observed from immunoblotting of whole kidney lysates from mice at different ages: Nek1 expression diminishes as the kidney and its epithelial subtypes mature. Co-staining of Nek1 in the cytoplasm and WT-1 in the nuclei of the same cells confirmed that Nek1 expression in glomeruli is the strongest in podocytes (Figure 1D).

#### **Nek1 expression in the embryonic mouse kidney**

We also examined the expression of Nek1 by IHC analysis in developing mouse kidneys. At post-coital embryonic day 13.5, when a recognizable kidney can first be identified, nephrogenesis proceeds by induction of metanephric mesenchyme from branches of the ureteric bud. Individual nephrons, from the glomerular capillary to the distal tubule, coalesce from induced mesenchyme, which sequentially forms in a centripetal pattern into comma- and S-shaped bodies in the more mature, inner regions [27,28]. Nek1 expression is relatively strongest in the developmentally primitive nephrogenic zones of the subcapsular cortex (Figure 2). Mesenchymal cells induced by branches of the ureteric bud to differentiate into epithelial vesicles express Nek1 most abundantly (Figure 2, panel B), as do cells at distinct regions of the lesser curvatures and bases of comma- and S-shaped bodies (Figure 2, panel D). These latter regions at and near the vascular cleft are precursors of glomerular and proximal tubular epithelial cells [27,28]. In the more mature yet still primitive glomeruli in the future juxtamedullary region of the kidney, Nek1 expression is evident in the cytoplasm of some tubular epithelial cells, but is strongest in parietal and visceral glomerular epithelial cells (Figure 2, panel F). This pattern in nephrons more advanced in their development is what would be expected in later stages from the Nek1 expression pattern in early postnatal kidneys. Taken together, the IHC data in normal developing mouse kidneys show that Nek1 is expressed most prominently in future glomerular and tubular epithelial subtypes. The data suggest that Nek1 may be important during stages of kidney development when epithelial cells are still cycling, rapidly synthesizing and repairing DNA, differentiating, or undergoing programmed cell death.

#### **Excessive apoptosis in the kat2J mouse kidney**

If Nek1 is important for kidney development, as suggested by its expression pattern, then kidney maturation should be delayed or otherwise abnormal in Nek1-deficient kat2J mice. To examine this possibility, we compared the kidneys of Nek1-deficient kat2J mice to those of age- and sex-matched, wild type littermates. Previous publications characterizing the phenotypes of kat

and kat2J mice reported that polycystic kidneys were observed late in mouse development, at least 1 month after birth in the more severely affected kat2J strain [3]. We found a significant difference between the kidneys of kat2J/Nek1  $-/-$  mice and wild type mice, however, as early as hours after birth. Subcapsular nephrogenic zones in kat2J/Nek1  $-/-$  kidneys are thinner and less differentiated (Figure 3A & B). Many kat2J/Nek1  $-/-$  tubular epithelial cells in H&E sections appear eosinophilic and vacuolated, as dying cells would. Staining with TUNEL reagents confirmed that cells in tubules and in primitive glomeruli die by apoptosis or necrosis at much higher rates in kat2J/Nek1  $-/-$  kidneys (Figure 3C, D, G & H). Staining for proliferating cell nuclear antigen (PCNA) also showed fewer cells in the S-phase of the cell cycle in the developing kat2J/Nek1  $-/-$  kidneys (Figure 3E, F, I & J).

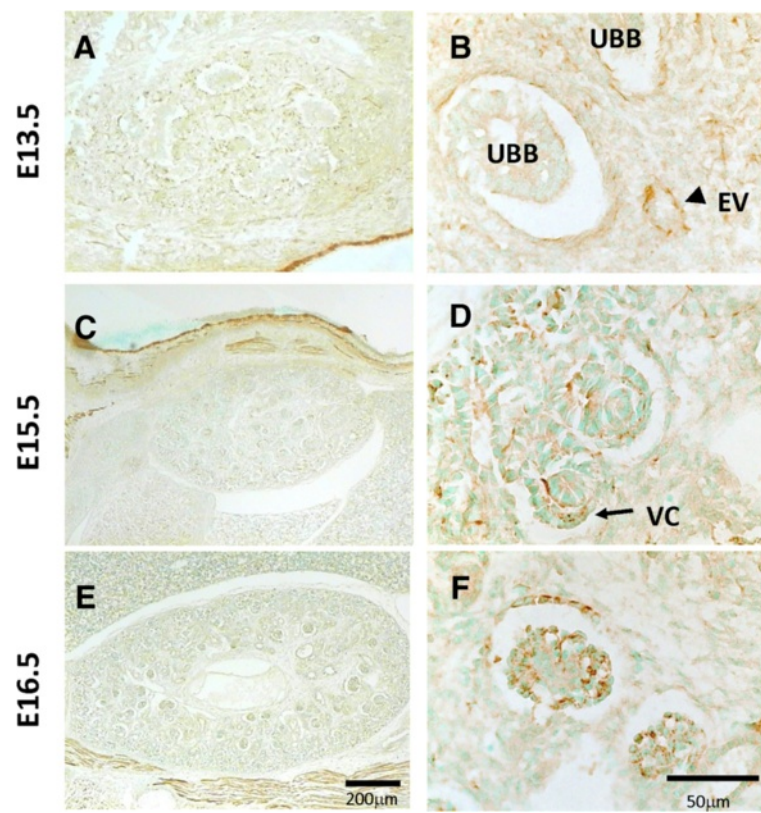
#### **Delayed maturation in the kat2J mouse kidney**

Tubular maturation is also abnormal in newborn kat2J/Nek1  $-/-$  mice. Of the 7 newborns kat2J/Nek1  $-/-$  mouse kidneys examined (from 3 litters), only one showed positive staining with a marker for mature proximal tubules (*Lotus tetragonolobus* lectin, LTL). The following tubular subtypes did not stain for any markers: Tamm-Horsfall glycoprotein (THP) for loops of Henle or aquaporin-2 for mature collecting ducts (Figure 4). Staining for a marker of collecting tubules, *Dolichos biflorus* lectin (DBF), in contrast, was positive in kat2J/Nek1  $-/-$  kidneys in a similar pattern when compared to wild type kidneys. In the kidneys of kat2J/Nek1  $-/-$  mice at postnatal day 7 (n = 6, from 3 litters) and postnatal day 14, mature proximal tubules, distal tubules, and collecting ducts were identified by staining with markers (Figure 4).

In addition to the delay in tubular development, glomerular development in kat2J/Nek1 mice appears to be delayed as well (Figure 5): more than 50% of deeper, juxtamedullary glomeruli are still in comma-shaped stages when similar glomeruli in wild type littermates have already progressed to a more mature stage. Such differences were evident by examining glomerular architecture in ultrathin, epoxy-embedded kidney sections stained with toluidine blue, and IHC staining for WT-1, a nuclear marker of metanephric mesenchymal cells and podocytes. All of the histological and immunohistochemical results suggest aberrant maturation of glomeruli and of several different tubular subtypes, especially those derived from metanephric mesenchyme, in maturing kat2J/Nek1  $-/-$  kidneys. These delays in maturation occur well before the kidneys develop recognizable cysts.

#### **Cysts develop from multiple different epithelial types in the nephron, from Bowman's space to collecting ducts**

Unlike observations made in a previous report [3], we found cysts in the kidneys hours after birth in the inbred



**Figure 2 Nek1 expression in wild type mouse embryonic kidneys.** Sections from embryonic mouse kidney at E13.5, E15.5 and E16.5 were subjected to immunohistochemistry analysis for Nek1 expression. (A, C, E) Low power photomicrographs (original magnification 10x, scale bar, 200 μm). (B, D, F) Higher power detail of the same kidney sections (original magnification 400x, bar, 50 μm). UBB, ureteric bud branch; EV, epithelial vesicle induced by ureteric bud; VC (thick arrow), vascular cleft of developing S-shaped proximal nephron.

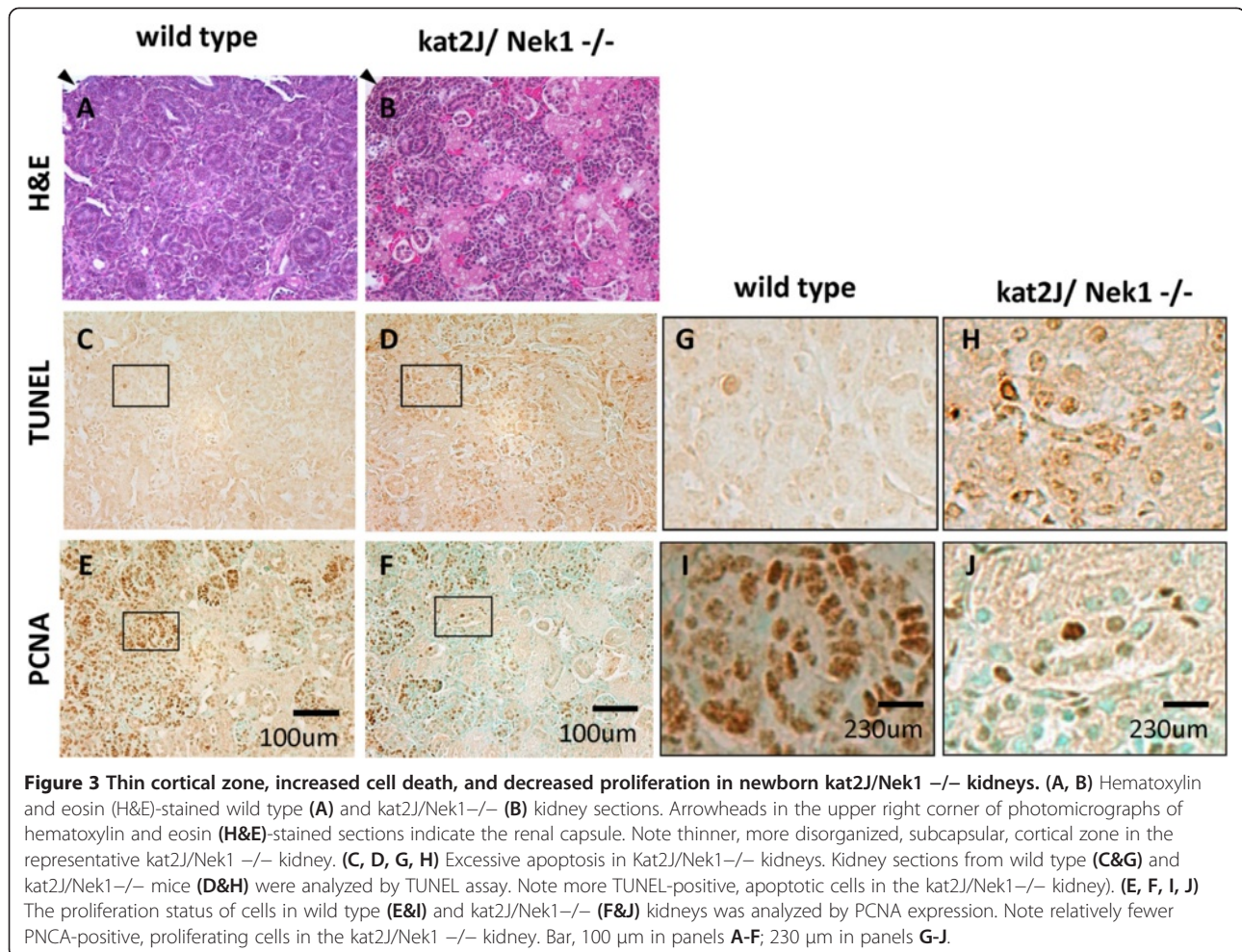
kat2J/Nek1  $-/-$  mice (Figure 6A panel a). Glomerular cysts expanding the Bowman's space and tubular cysts are more evident at 2 weeks of age (Figure 6A, panel b). Unlike the previous report, in which most kat2J/Nek1  $-/-$  mice survived past 7–8 months of age, most of the kat2J/Nek1  $-/-$  mice in our inbred colony did not survive past 20 days old. Staining with lectins or proteins that have expressions limited to certain tubular subtypes indicate that the polycystic kidney disease in kat2J/Nek1  $-/-$  mice develops from multiple tubular subtypes, including proximal tubules, loops of Henle, and collecting tubules or collecting ducts (Figure 6A, panels c-f), as well as from glomerular epithelial cells (Figure 6A, panel b). In this respect, the polycystic kidney disease that develops in kat2J/Nek1  $-/-$  mice is much like human autosomal dominant PKD, in which cysts can form from all parts of the nephron [29,30].

#### Focal cysts develop in older kat2J/Nek1 $+/-$ mice

The PKD phenotype in the kat and kat2J mice is thought to have a recessive pattern of inheritance according to the previous report [3]. In other words, only mice with homozygous Nek1 mutations develop the disease. We examined heterozygous kat2J/Nek1 mice long into their

life spans, however, and discovered that even these mice develop focal cystic disease as they age. Whereas inbred kat2J/Nek1  $-/-$  mice develop morphologically detectable PKD early in their lives, almost universally before the age of 3 weeks, most of their Nek1  $+/-$  littermates (55 of 81, or 68%) developed a more limited form of cystic disease after the age of 1 year (Figure 6B, panels a & b). Damage to the kidney with ischemia-reperfusion injury can accelerate this focal or limited PKD ([31] and manuscript in preparation). The cystic disease was never seen in similarly treated wild type littermates, even after ischemia-reperfusion injury [31]. Although expression of Nek1 in tubular epithelial cells is decreased overall in older mice compared with younger mice, many tubular epithelial cells in aged kat2J/Nek1  $+/-$  kidneys have up-regulated Nek1 expression in a patchy distribution (Figure 6B, panels c & d). Other tubular epithelial cells in kat2J/Nek1  $+/-$  mice, especially those that line nascent cysts or cystic, dilated tubules, don't stain for Nek1 at all (Figure 6B, panels e & f). These results suggest that the loss of Nek1 expression may be important, either etiologically in cyst generation or as a consequence of early cyst development. Stochastic inactivation of Nek1 may be required for cystogenesis in the kat2J model.

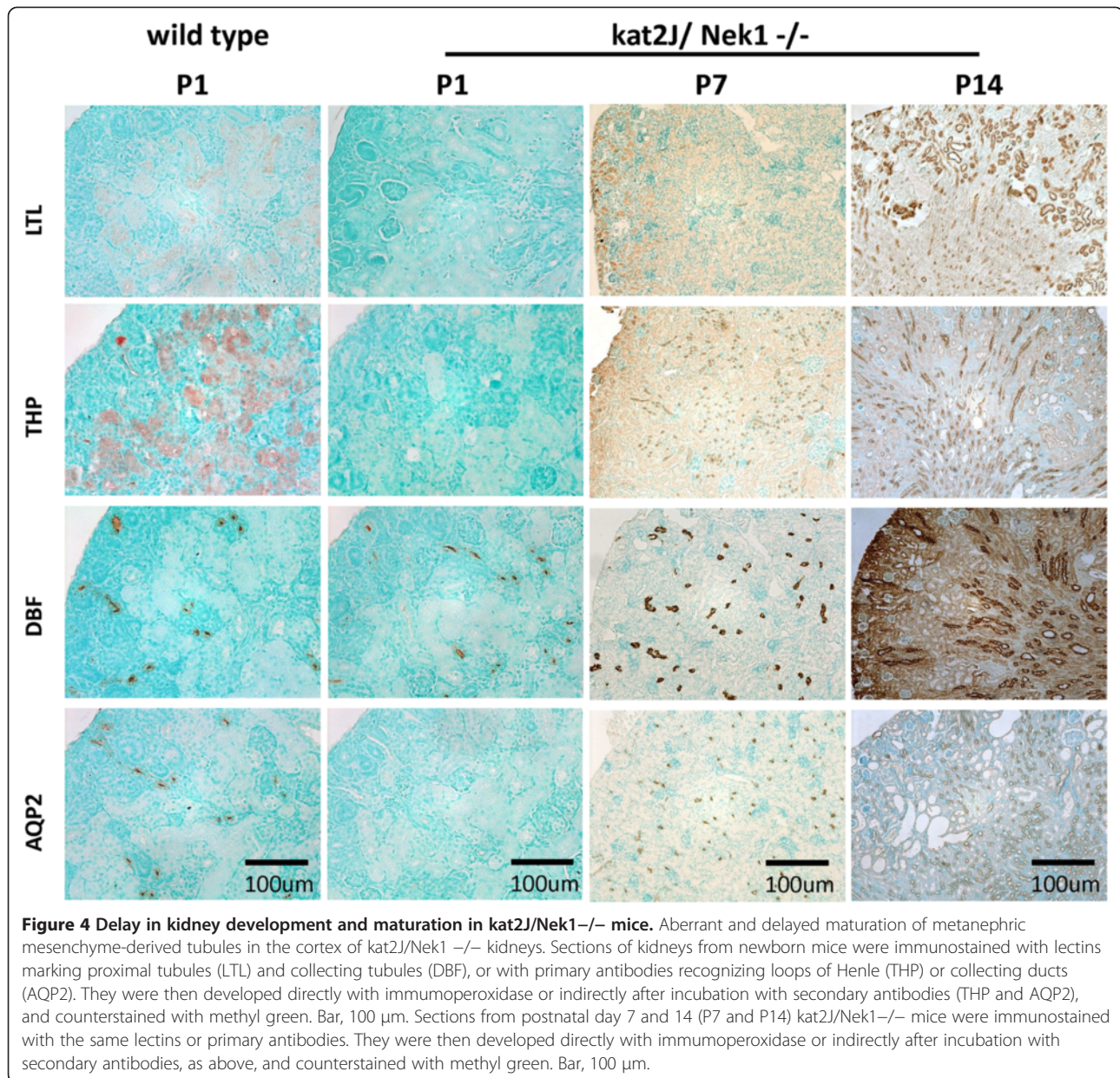




### Primary cilia are morphologically diverse in cyst-lining epithelial cells

Disturbances in the morphology or function of primary cilia are currently thought to be fundamental to the pathogenesis of PKD, in many animal models as well as in human autosomal recessive and autosomal dominant PKD [2,32]. Using the anti-Nek1 antibodies we developed, we and other researchers have shown that a portion of Nek1, like many other PKD-associated proteins, localizes to the primary cilia in normal renal tubular epithelial cells [33]. We also found Nek1 to co-localize with acetylated tubulin, in particular at the base of the primary cilia or at centrosomes in interphase HK2 human renal tubular cells or renal tubular epithelial cells (RTEs) cultured primarily (without any transformation) from wild type mice (Figure 7A). In primarily attached RTEs cultured from wild type littermates of *kat2J/Nek1 -/-* mice, the staining pattern for acetylated tubulin was similar to the pattern observed in wild type mice. In *kat2J/Nek1 -/-* RTEs that had been passed for several generations in culture, however, primary cilia were morphologically diverse compared to those of similarly passed wild

type RTEs. Many *kat2J/Nek1 -/-* cells had unusually long cilia, and some had multiple cilia (Figure 7D). Scanning electron micrographs of kidneys from *kat2J/Nek1 -/-* reiterated previous data that cysts formed in Bowman's space and in multiple tubular segments (Figure 7B). They also allowed visualization of cilia in the tubular epithelial cells lining cysts, which appeared morphologically normal, but are usually longer than expected (Figure 7C). The length of the cilium is subject to biological regulation. Different cell types possess cilia of different average lengths. Studies from mouse suggest the mean ciliary length in normal kidney tubule is 2.2-2.3  $\mu$ m [34]. In our cultured wild-type renal tubular epithelial cells, the mean ciliary length is 2.1  $\mu$ m, which is similar to the length in the other report. In the *kat2J/Nek1 -/-* kidney, the mean, abnormally long ciliary length is 5.6  $\mu$ m and the short ciliary length 1.10  $\mu$ m. In the cultured *kat2J/Nek1 -/-* cells, the mean long ciliary length is 5.6  $\mu$ m and the short ciliary length 1.4  $\mu$ m, very similar to the lengths found in the mutant *kat2J/Nek1 -/-* kidneys by scanning electron microscopy (Figure 7E). Thus some cilia are longer than normal and others are shorter, and some cells have more than one



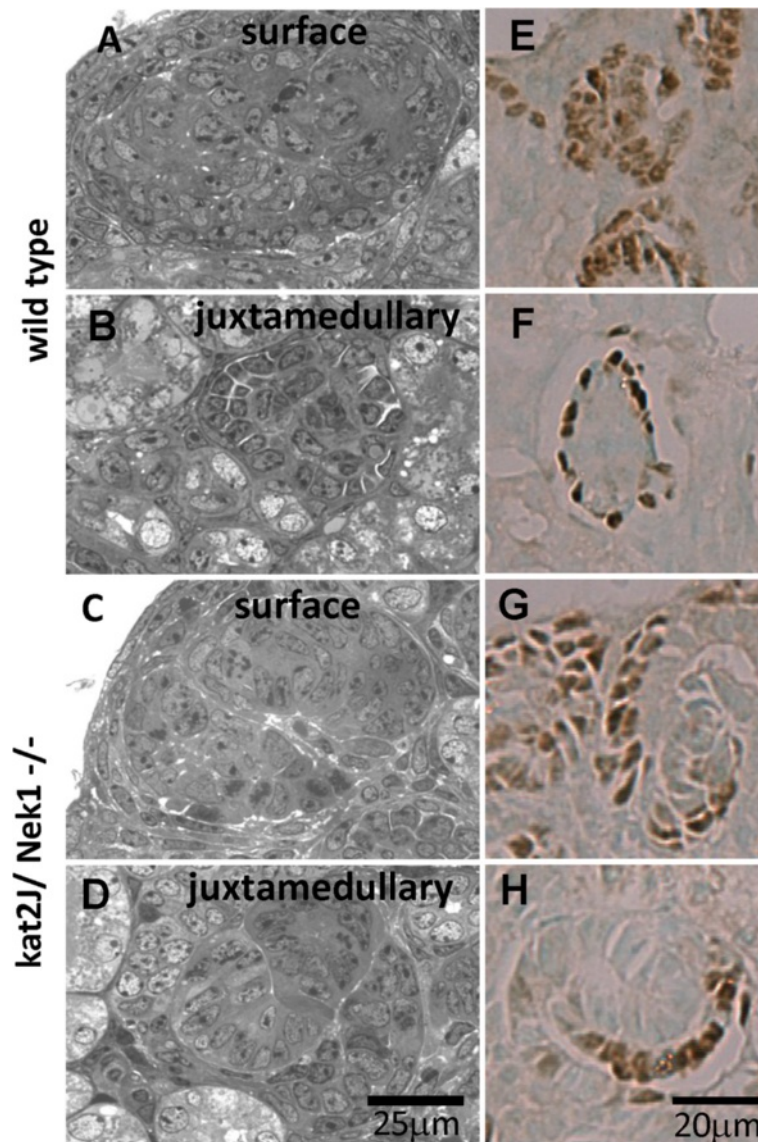
primary cilium. The length of the cilia is important for the ability of cells to respond properly to stress, directional flow, or other environmental stimuli. The abnormal ciliary length in *Kat2J/Nek1*<sup>-/-</sup> cells and kidneys may result in *kat2J/Nek1*<sup>-/-</sup> cells that cannot sense or respond to stress correctly, and that cells dividing along tubules during development or after injury may not populate in a proper planar direction. Such misdirected cell polarity and migration could contribute to the generation of cysts.

## Discussion

In this study, we explored the expression pattern of *Nek1*, which is mutated and inactivated in the *kat* and *kat2J* mouse models of PKD. Like polycystins 1 and 2

(PC1 and PC2), *Nek1* appears to be developmentally regulated. Expression is highest during the middle stages of the embryonic kidney development, and specifically in cells destined to become glomerular and proximal tubular epithelial cells. Expression of *Nek1* in proximal tubular cells diminishes within weeks after birth in the mouse, whose kidney still grows and matures postnatally. Expression of *Nek1* in glomerular epithelial cells, although it also diminishes with kidney maturation, remains relatively strong compared with other kidney cells well into adult stages. Why *Nek1* expression seems to be strongest in podocytes, and to a lesser extent in tubular epithelial cells, is not entirely clear. Perhaps these cells have specific replicative steps that require *Nek1* for efficient DNA repair [12,13],



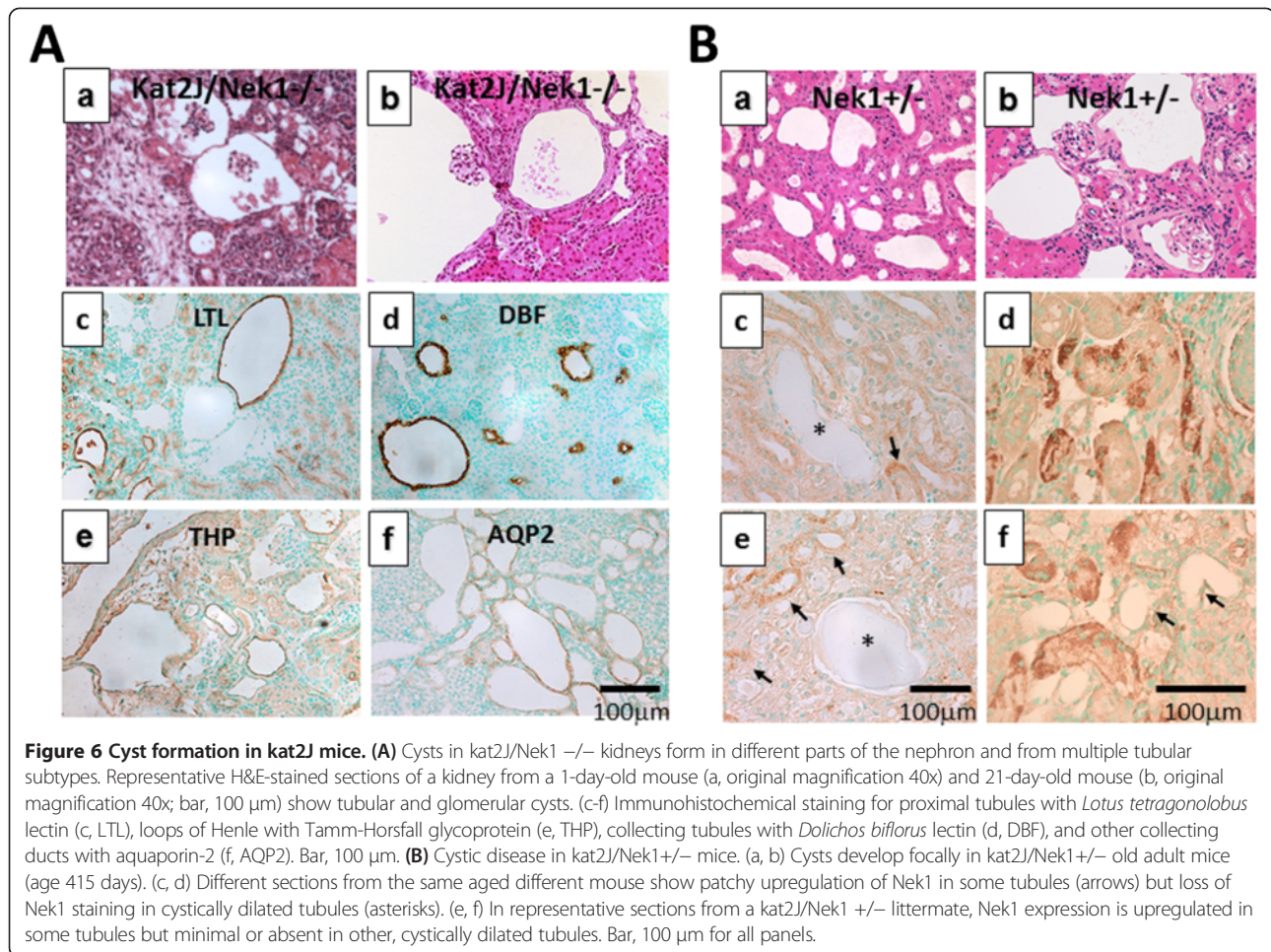


**Figure 5** Delayed glomerular maturation in newborn *kat2J/Nek1*<sup>-/-</sup> kidneys. Epoxy-embedded, toluidine blue stained sections of subcapsular (surface) and deeper (juxtamedullary) glomeruli from representative, littermate, wild type (**A, B**) and *kat2J/Nek1*<sup>-/-</sup> (**C, D**) kidneys. Compare the more mature, wild type, juxtamedullary glomerulus in **B**, to the *kat2J/Nek1*<sup>-/-</sup> juxtamedullary glomerulus still in S-shaped form in **D**. Bar, 25  $\mu$ m. Immunocytochemical staining of formalin-fixed, paraffin-embedded sections from the same kidneys for WT-1, a nuclear marker for metanephric mesenchyme and podocytes (**E-H**) confirmed that in *kat2J/Nek1*<sup>-/-</sup> kidneys, nascent juxtamedullary glomeruli were still in S-shaped forms (**G, H**). At the same time, nascent juxtamedullary glomeruli in kidneys of sex-matched, wild type, littermate mice have progressed to more mature architecture, with WT-1 staining in a ringed podocyte pattern (**E, F**). Bar, 20  $\mu$ m.

or perhaps they need Nek1 at primary cilia/centrosome complexes for uniquely sensing directional proliferation as glomeruli coalesce and as tubules expand and elongate. Such functions would be required less in mature glomeruli, the components of which are no longer rearranging as actively by cell proliferation and apoptosis as they were in earlier stages, and in tubules after they no longer need to elongate. In such a scenario, Nek1 expression would increase again in cells after injury in post-natal stages, because the cells would again require new DNA synthesis,

checking and repair of damaged DNA, and mitosis with directional proliferation to repopulate glomerular epithelial spaces and renal tubular lumens. In cells lining non-cystic tubules in *Nek1*<sup>+/-</sup> kidneys, we found that Nek1 expression was up-regulated after ischemic injury (data not shown, [31]).

Although there is controversy about some of the antibody specificities used to describe the distribution pattern of polycystins in mouse embryonic and adult kidneys, immunohistochemical studies on PC1 and PC2 expression



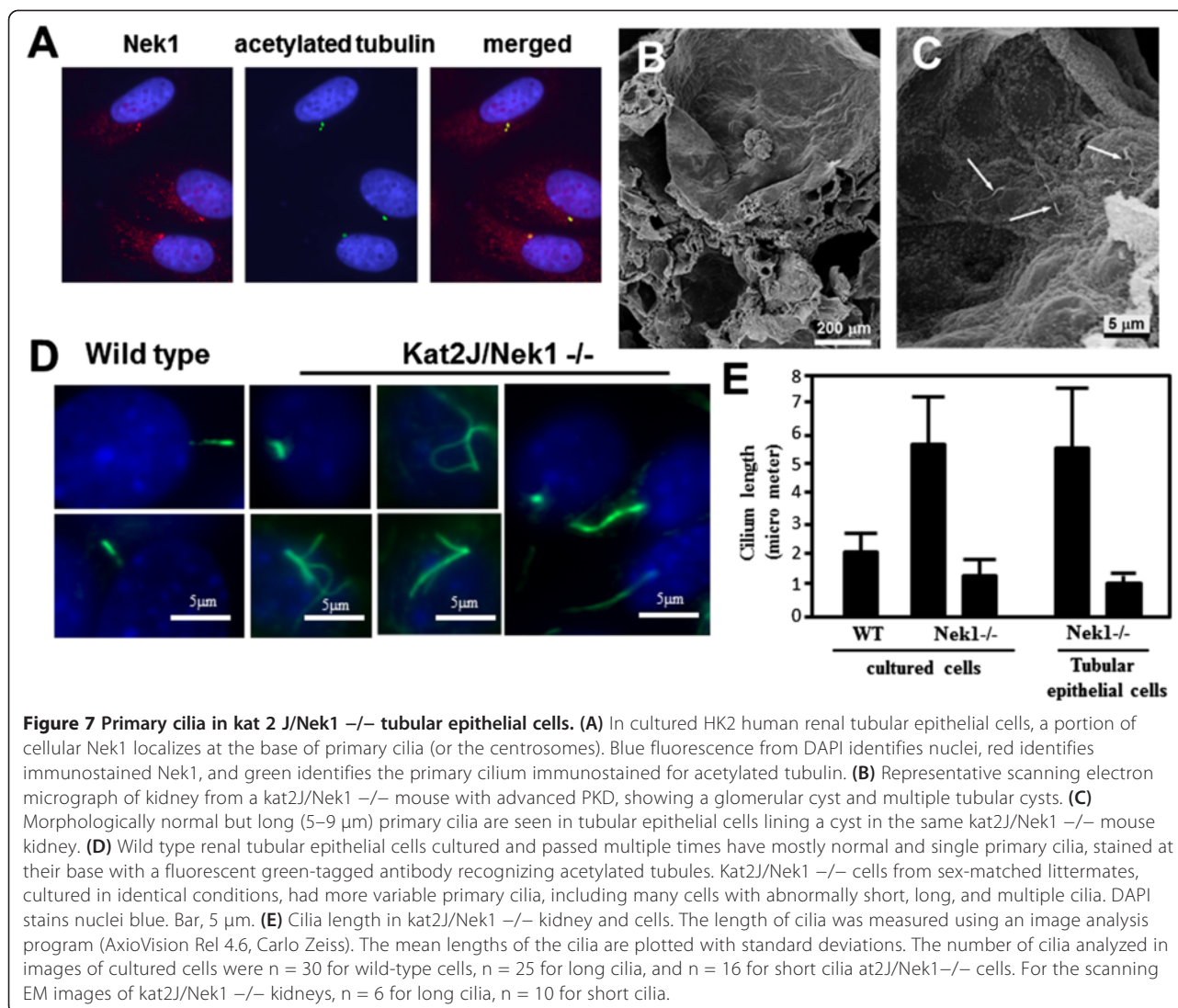
and in situ hybridization techniques used to observe the expression of *PKD1* and *PKD2* mRNA transcripts have found consistent patterns in many cases. The similarities and differences in the expression patterns of polycystins and Nek1 are interesting to note. First, Nek1 is expressed prominently in podocytes; PC1 and 2 are not. *PKD1* expression during embryonic kidney development first appears by mRNA in situ analysis close to birth in the distal tubules and relatively late in differentiating proximal tubules. *PKD2* mRNA, in comparison, is more diffusely expressed during all stages of nephron development. [21,24] Expression of both *PKD1* and *PKD2* mRNA by in situ hybridization and PC1/2 proteins by immunohistochemical staining diminish significantly in the mature kidney compared to the still developing kidney. These findings prompted speculation that polycystins have roles primarily related to differentiation and organization of tubular architecture during nephrogenesis [21-24,26]. Inactivation of either polycystin-1 or -2, has also been shown to lead to aberrant renal tubular cell proliferation and apoptosis [21-24,26,35,36]. Nek1 may have similar functions, or unique functions

in the same developmental pathways as the polycystins during development and after injury.

The recent demonstration that Nek1 interacts with and phosphorylates TAZ, an adaptor protein in the E3 ubiquitin ligase complex, to modulate PC2 protein level [37] provides another potential mechanism by which Nek1 inactivation may lead to polycystic kidney disease. In *Nek1*<sup>-/-</sup> cells, TAZ becomes unphosphorylated and fails to target PC2 for degradation, resulting in abnormal accumulation of PC2 and affecting its role in ciliogenesis. Transgenic mouse models that overexpress PC2 argue against upregulation of PC2 protein expression as the main reason to explain PKD in *kat2J* *Nek1*<sup>-/-</sup> mice. In both PC2 transgenic mouse models, the mice develop small cysts as early as 8 month after birth, and more cysts by 18 months of age [38,39]. In the *kat2J* *Nek1*<sup>-/-</sup> mice, cysts develop as early as 5-14 days. Additional mechanisms by which Nek1 plays in cyto-genesis need to be explored.

Our data clearly indicate that Nek1 deficiency causes abnormalities early in kidney development, before the development of grossly evident glomerular or tubular cysts. The early abnormalities include excessive apoptosis and





diminished proliferation. These could lead to reduction in net nephron mass as well as to the niduses for cysts, where expanding Bowman’s capsules or elongating tubules develop weak regions at which they might herniate or focally expand the tubular lumen. These abnormalities therefore provide insight into the pathogenesis of cysts in the Nek1/kat2J model of PKD. They also illustrate a theme common for many types of polycystic kidney disease: the cystic phenotype requires or is greatly exacerbated by cellular proliferation and mitosis.

Several animal models of PKD, including conditional inactivation of murine Pkd1, kif3a (a kinesin motor component important for directional transport in primary cilia), or other proteins, have been shown to develop the polycystic phenotype only when the gene is inactivated during kidney development or postnatally after the kidney is injured and allowed to repair [40-42]. If such proteins are conditionally inactivated after full kidney maturation and

if the adult kidneys are not injured such that renal cells are not forced to divide, then cysts rarely develop. The key requirement for cystogenesis seems to be the proliferation of epithelial cells, perhaps accompanied by inaccurate mitosis and/or cytokinesis, and altered planar polarity in daughter cells moving along a specific vector. Some researchers have suggested that manifestation of autosomal dominant PKD requires not only two genetic “hits” to *PKD1*, but a “third hit”, i.e., aberrant mitosis during embryonic or neonatal kidney development, or injury with repair [40,43,44].

We speculate that the same requirement for mitosis would be necessary if Nek1 were conditionally inactivated in experimental mice. Inactivation of Nek1 itself, however, since it leads to mitochondrial cell death in the presence of minimal stress, and defective DNA damage sensing and repair [15,16], could propagate injury to nearby tubules, even without additional ischemia-reperfusion injury. The



requirement of cellular proliferation for the manifestation of cystic disease suggests that defects in mitosis are fundamental to the pathogenesis of renal cysts. We have ascribed roles for Nek1 to ensure proper primary cilium-centrosome functions in dividing cells. Aberrant mitoses result when Nek1 is inactivated [12,18].

Some of our findings differ from those previously reported. Early reports characterizing the *kat* and *kat2J* strains suggested that renal cysts do not form until post-natal developmental stages, and that they do not progress to end stages until 3 to 9 months after birth [3,4]. We used the same *kat2J* strain developed at The Jackson Laboratory as the one reported by Uphadya et al. Perhaps we observed more accelerated pleiotropic pathology in our more inbred colony on the C57Bl/6 J genetic background. Even with subsequent out-breeding to wild type C57Bl/6 J mice, we still found earlier development of renal cysts than previously reported in *Nek1*  $-/-$  *kat 2 J* mice. There may be an anticipation phenotype in after multiple *Nek1/kat2J*  $+/-$   $\times$   $+/-$  matings, owing to the effects of heterozygosity for the *Nek1* gene. *Nek1* haplo-insufficiency does result in impaired responses to DNA damage [14], which might also help to explain our observation that older *Nek1*  $+/-$  mice develop focal cystic disease.

Our data in cultured renal tubular epithelial cells and fibroblasts has previously suggested that *Nek1* upregulation may be a protective response to DNA and cellular damage [12,13,15]. After ischemic/oxidative kidney injury, which causes DNA damage, *Nek1* expression is upregulated, and a portion of cellular *Nek1* moves from cytoplasm to the foci of DNA damage in the nucleus. If the damage is sub-lethal, then *Nek1* moves back to its normal cytoplasmic location and the cells survive [12,15]. In the present study, we show *in vivo* evidence to support this same hypothesis, i.e., that *Nek1* expression is upregulated, perhaps as a protective response to cellular and DNA damage. The expression of *Nek1* increases after ischemia-reperfusion injury in tubular epithelial cells that aren't cystic, but seems to be down-regulated or absent in renal tubular epithelial cells that line nascent renal cysts in *Nek1/kat2J* heterozygotes (Figure 6). These results suggest that stochastic inactivation of *Nek1* is required for cyst formation in the *kat2J* mouse model of PKD. Aberrant planar polarity, mitotic catastrophes, and excessive apoptosis would result if dividing cells that line Bowman's spaces or renal tubules could not properly repair injured DNA in the setting of *Nek1* deficiency. Aberrant mitoses that were not lethal by the next cell division might result in inequitable distribution of chromosomes to daughter cells. Our previous observations in cultured *Nek1/kat2J*  $-/-$  cells have proven chromosomal instability in *Nek1*-deficient cells [18].

Additional observations in the current study have shown that primary cilia, which have the same bases as the centrosome complexes, are morphologically variable in

*Nek1*  $-/-$  cells. Most of the identifiable cilia in renal tubular cells observed by scanning electron microscopy in *Nek1/kat2J*  $-/-$  renal cysts (and in primary *Nek1*  $-/-$  tubular cells before propagation in culture) were relatively normal and uniform in appearance, although somewhat longer than expected. After such cells were made to divide several times in culture, however, primary cilia seemed to become more variable in length and even in number. These primary cilium changes would also fit with previous findings from our lab showing that *Nek1*  $-/-$  cells suffer mitotic errors in surviving cells [12]. In this case, the mitotic errors manifest as bizarre and heterogeneous primary cilia. We suggest that improperly regulated mitosis and cytokinesis are the primary problems in *Nek1* deficiency, and probably in other forms of PKD as well.

At least 11 mammalian NIMA-related proteins have been identified to date. They all have significant homology in their N-terminal kinase domains, but widely divergent regulatory domains with distinct binding characteristics and presumably distinct kinase substrates [5]. *Nek8* is particularly noteworthy in comparison with *Nek1*, because the gene encoding it has also been mapped to a spontaneous mutation associated with PKD in the juvenile polycystic kidney (*jck*) mouse strain [45]. Immunohistochemistry has shown normal localization of *Nek8* in the apical cytoplasm of inner medullary collecting tubule cells but mislocalization in the collecting tubules of *Nek8/jck*  $-/-$  mouse kidneys. Expression of a dominant negative form of *Nek8* in cultured tubular epithelial cells results in disordered actin cytoskeleton and in multiple nuclei. These findings and the unique RCC1 repeats in the *Nek8* protein, which are important for chromosome condensation in other proteins, have suggested that *Nek8* might serve an essential function in regulating the cytoskeletal structure and regulate chromosome segregation in a specific subset of renal cells.

*Nek1*, by virtue of the unique protein interactions and expression pattern, may serve a distinct but related function in different kidney cell types. In contrast to the expression of *Nek8*, primarily in collecting tubules and derived embryologically from ureteric buds, *Nek1* expression is greatest in developing proximal tubules and glomerular epithelial cells, which derive from metanephric mesenchyme. It is tempting to speculate that *Nek1* and *Nek8* may serve similar functions in distinct renal epithelial cell types derived from different embryonic origins. In *Nek1/kat 2 J*  $-/-$  kidneys, however, we did observe some cysts stained with markers that are usually restricted to the collecting tubules and ducts (aquaporin-2 and DBF lectin). *Nek1* deficiency must therefore have some effects on the development of cysts derived from the tubules of ureteric bud origin. Alternative explanations for our observation that some cyst-lining renal tubular epithelial cells stain with DBF lectin

and aquaporin-2 are that these markers are not entirely specific for collecting tubules, or that the incompletely differentiated cells lining cystic tubules don't stain exactly like normal tubules, such that they cannot be classified as collecting tubules or ducts. While data suggests that lectins may not always identify tubular subtypes with absolute certainty [46-48], they have been used accurately in studies of polycystic kidneys in the same way we used them here, to determine tubular cell types from which cysts derive in PKD [49-51].

Taken together the data presented here, the pattern of Nek1 expression during development and after kidney injury and the finding that renal cysts in the Nek1  $-/-$  and  $+/-$  models derive from many different epithelial cells types along the nephron, indicate that the *kat2J* mouse is relevant for studying the pathogenesis of several forms of PKD. We show here for the first time that Nek1  $+/-$  mice develop a mild form of cystic kidney disease late in life. Since cyst-lining cells lose expression for Nek1, we suggest that stochastic inactivation of Nek1 is required for the manifestation of the PKD phenotype, as it is in humans and animals with heterozygous germ line mutations in *PKD1* or *PKD2* to manifest autosomal dominant PKD. Lastly, we observed that the morphology of primary cilia in Nek1  $-/-$  renal tubular cells changes and becomes more variable as the cells serially divide. This adds credence to the hypothesis that polycystic kidney disease is a problem that stems fundamentally from abnormal functions of the primary cilium-centrosome complex, including abnormalities that arise from imperfect mitosis and inequitable distribution of centrosomes and chromosomes.

Aberrant apoptosis is an unique and cardinal feature of cystic and non-cystic kidney cells in progressive human ADPKD [52]. Based on the roles of Nek1 in DNA sensing, responding to, or repairing DNA and cellular damage, and regulating renal cell apoptosis after injury [12-16,18,53], Nek1 is thereby important for regulating renal cell apoptosis after injury. In this scenario, Nek1 expression is upregulated as a defective response [14]. Increase in Nek1 abundance and kinase activity may be needed specifically in injured cells before they recover; such response would allow sub-lethally injured cells to sense and/or repair damage to DNA and other cellular structures more efficiently [53]. When Nek1 is mutated or when its upregulation is otherwise insufficient, cells in the kidney would more likely die aberrantly or fail to proliferate when they normally should after injury. The abnormal length of cilia found in the *Kat2J/Nek1* $-/-$  kidney and cells also suggests that Nek1 deficient cells may not be able to sense the environmental stress and response accordingly. Such a series of events may begin to explain how Nek1 deficiency leads to polycystic kidney disease in mice, through a mechanism that involves

accelerated and aberrant apoptosis in the setting of endogenous or acquired DNA and cellular damage.

## Conclusions

In the report, we examined the expression pattern of Nek1 and characterized the renal cysts that develop in *kat2J* mice. We showed that Nek1 is expressed in all murine tissues examined. Its expression in kidney is developmentally regulated: in the embryonic kidney, Nek1 expression is most prominent in cells that will become podocytes and proximal tubules, in the postnatal kidney, Nek1 expression decreases as the kidneys mature, especially in tubular epithelial cells. Kidney development in *kat2J/Nek1* $-/-$  mice is aberrant early, before the appearance of gross cysts: developing cortical zones are thin, populated by immature glomeruli and characterized by excessive apoptosis of several cell types. Cysts in *kat2J/Nek1* $-/-$  mice form postnatally in the Bowman's space as well as different tubular subtypes. Late in life, *kat2J/Nek1*  $+/-$  mice form renal cysts and the cells lining these cysts lack staining for Nek1. The primary cilia of cells lining cysts in *kat2J/Nek1* $-/-$  mice are morphologically diverse: in some cells they're unusually long while in others, there are multiple cilia of varying lengths. Our studies indicate that Nek1 deficiency leads to disordered kidney maturation and cysts throughout the nephron.

## Abbreviations

PKD: Polycystic kidney disease; NIMA: Never-in-mitosis A protein kinase; Nek1: Never-in-mitosis A related protein kinase; Kat: Kidneys-anemia-testes; PCNA: Proliferating cell nuclear antigen; LTL: *Lotus tetragonolobus* lectin; THP: Tamm-Horsfall glycoprotein; DBF: *Dolichos biflorus* lectin; PKD1: Polycystic kidney disease gene 1; PKD2: Polycystic kidney disease gene 2; PC1: Polycystin 1, protein product of PKD1; PC2: Polycystin 2, protein product of PKD2; TBE: Tris/Borate/EDTA buffer; VDAC: Voltage dependent anionic channel; PCR: Polymerase chain reaction; TUNEL: Terminal deoxynucleotidyl transferase (dUTP) nick end labeling; IHC: Immunohistochemistry.

## Competing interests

The authors declare that they have no competing interests.

## Authors' contributions

YC conceived, designed, and coordinated the study, acquired, analyzed, and interpreted data, and helped draft the manuscript. HCC, MP, and PL performed or helped interpret the histological sections and animal handling. CJ helped with the cilia analysis and drafted the final manuscript. DJR conceived, designed, acquired, analyzed, and interpreted data, and drafted the manuscript. All authors read and approved the final manuscript.

## Acknowledgements

This work was initiated at University of Texas Health Science Center at San Antonio and completed at The University of California, Irvine. The work was supported by grants from the PKD Foundation, the American Society of Nephrology, the National Kidney Foundation, and the NIH (RO1-DK067339) to Y.C.; a George M. O'Brien Kidney Research Center grant from the NIH to Y. C. (P50-DK061597, Hanna E. Abboud, Program Director); and a grant from the NIH to D.J.R. (RO1-DK61626). We thank Rosaria Polci, and Sergio Garcia for assistance with early stages of the project and with technical matters; Dr. Phang-Lang Chen for critical reading the manuscript; and a Veterans Administration Renal Research Excellence Award Program to the South Texas Veterans Health Care System, Audie L. Murphy Division, for core facility support.

#### Author details

<sup>1</sup>Department of Medicine, Division of Endocrinology, University of California, Gross Hall 1130, Mail Code, 4086, Irvine, CA 92697, USA. <sup>2</sup>Department of Medicine, Division of Nephrology, The University of Texas Health Science Center at San Antonio, San Antonio, USA. <sup>3</sup>University Transplant Center, The University of Texas Health Science Center at San Antonio, Medicine/ Nephrology, MC 7882, 7703 Floyd Curl Dr, San Antonio, TX 78229-3900, USA. <sup>4</sup>Renal Research Division, South Texas Veterans Health Care System, Audie L. Murphy Division, 7703 Floyd Curl Dr, San Antonio, TX 78229-3900, USA.

Received: 19 March 2014 Accepted: 3 July 2014

Published: 17 July 2014

#### References

1. Guay-Woodford LM: Murine models of polycystic kidney disease: molecular and therapeutic insights. *Am J Physiol Renal Physiol* 2003, **285**(6):F1034-F1049.
2. Wilson PD: Mouse models of polycystic kidney disease. *Curr Top Dev Biol* 2008, **84**:311-350.
3. Vogler C, Homan S, Pung A, Thorpe C, Barker J, Birkenmeier EH, Upadhyay P: Clinical and pathologic findings in two new allelic murine models of polycystic kidney disease. *J Am Soc Nephrol* 1999, **10**(12):2534-2539.
4. Upadhyay P, Birkenmeier EH, Birkenmeier CS, Barker JE: Mutations in a NIMA-related kinase gene, *Nek1*, cause pleiotropic effects including a progressive polycystic kidney disease in mice. *Proc Natl Acad Sci U S A* 2000, **97**(1):217-221.
5. O'Connell MJ, Krien MJ, Hunter T: Never say never. The NIMA-related protein kinases in mitotic control. *Trends Cell Biol* 2003, **13**(5):221-228.
6. Osmani AH, McGuire SL, Osmani SA: Parallel activation of the NIMA and *p34cdc2* cell cycle-regulated protein kinases is required to initiate mitosis in *A. nidulans*. *Cell* 1991, **67**(2):283-291.
7. Osmani SA, Engle DB, Doonan JH, Morris NR: Spindle formation and chromatin condensation in cells blocked at interphase by mutation of a negative cell cycle control gene. *Cell* 1988, **52**(2):241-251.
8. Osmani SA, May GS, Morris NR: Regulation of the mRNA levels of *nima*, a gene required for the G2-M transition in *Aspergillus nidulans*. *J Cell Biol* 1987, **104**(6):1495-1504.
9. Osmani SA, Pu RT, Morris NR: Mitotic induction and maintenance by overexpression of a G2-specific gene that encodes a potential protein kinase. *Cell* 1988, **53**(2):237-244.
10. Osmani SA, Ye XS: Cell cycle regulation in *Aspergillus* by two protein kinases. *Biochem J* 1996, **317**(Pt 3):633-641.
11. Letwin K, Mizzen L, Motro B, Ben-David Y, Bernstein A, Pawson T: A mammalian dual specificity protein kinase, *Nek1*, is related to the NIMA cell cycle regulator and highly expressed in meiotic germ cells. *Embo J* 1992, **11**(10):3521-3531.
12. Chen Y, Chen CF, Riley DJ, Chen PL: *Nek1* kinase functions in DNA damage response and checkpoint control through a pathway independent of ATM and ATR. *Cell Cycle* 2011, **10**(4):655-663.
13. Chen Y, Chen PL, Chen CF, Jiang X, Riley DJ: Never-in-mitosis related kinase 1 functions in DNA damage response and checkpoint control. *Cell Cycle* 2008, **7**(20):3194-3201.
14. Polci R, Peng A, Chen PL, Riley DJ, Chen Y: NIMA-related protein kinase 1 is involved early in the ionizing radiation-induced DNA damage response. *Cancer Res* 2004, **64**(24):8800-8803.
15. Chen Y, Craigen WJ, Riley DJ: *Nek1* regulates cell death and mitochondrial membrane permeability through phosphorylation of VDAC1. *Cell Cycle* 2009, **8**(2):257-267.
16. Chen Y, Gaczynska M, Osmulski P, Polci R, Riley DJ: Phosphorylation by *Nek1* regulates opening and closing of voltage dependent anion channel 1. *Biochem Biophys Res Commun* 2010, **394**(3):798-803.
17. Arama E, Yanai A, Kilfin G, Bernstein A, Motro B: Murine NIMA-related kinases are expressed in patterns suggesting distinct functions in gametogenesis and a role in the nervous system. *Oncogene* 1998, **16**(14):1813-1823.
18. Chen Y, Chen CF, Chiang HC, Pena M, Polci R, Wei RL, Edwards R, Hansel DE, Chen PL, Riley DJ: Mutation of NIMA-related kinase 1 (*NEK1*) leads to chromosome instability. *Mol Cancer* 2011, **10**:5.
19. Durfee T, Mancini MA, Jones D, Elledge SJ, Lee WH: The amino-terminal region of the retinoblastoma gene product binds a novel nuclear matrix protein that co-localizes to centers for RNA processing. *J Cell Biol* 1994, **127**(3):609-622.
20. Passey S, Pellegrin S, Mellor H: Scanning electron microscopy of cell surface morphology. *Curr Protoc Cell Biol* 2007, **37**:4.17.1-4.17.13. John Wiley & Sons, Inc.
21. Chauvet V, Qian F, Boute N, Cai Y, Phakdeekitcharoen B, Onuchic LF, Attie-Bitach T, Guicharnaud L, Devuyst O, Germino GG, Gubler MC: Expression of *PKD1* and *PKD2* transcripts and proteins in human embryo and during normal kidney development. *Am J Pathol* 2002, **160**(3):973-983.
22. Foggensteiner L, Bevan AP, Thomas R, Coleman N, Boulter C, Bradley J, Ibraghimov-Beskrovnaya O, Klinger K, Sandford R: Cellular and subcellular distribution of polycystin-2, the protein product of the *PKD2* gene. *J Am Soc Nephrol* 2000, **11**(5):814-827.
23. Geng L, Segal Y, Pavlova A, Barros EJ, Lohning C, Lu W, Nigam SK, Frischauf AM, Reeders ST, Zhou J: Distribution and developmentally regulated expression of murine polycystin. *Am J Physiol* 1997, **272**(4 Pt 2):F451-F459.
24. Guillaume R, Trudel M: Distinct and common developmental expression patterns of the murine *Pkd2* and *Pkd1* genes. *Mech Dev* 2000, **93**(1-2):179-183.
25. Ong AC, Ward CJ, Butler RJ, Biddolph S, Bowker C, Torra R, Pei Y, Harris PC: Coordinate expression of the autosomal dominant polycystic kidney disease proteins, polycystin-2 and polycystin-1, in normal and cystic tissue. *Am J Pathol* 1999, **154**(6):1721-1729.
26. Van Adelsberg J, Chamberlain S, D'Agati V: Polycystin expression is temporally and spatially regulated during renal development. *Am J Physiol* 1997, **272**(5 Pt 2):F602-F609.
27. Kazimierczak J: Histochemical observations of the developing glomerulus and juxtaglomerular apparatus. *Acta Pathol Microbiol Scand [A]* 1970, **78**(4):401-413.
28. Mugrauer G, Alt FW, Ekblom P: N-myc proto-oncogene expression during organogenesis in the developing mouse as revealed by in situ hybridization. *J Cell Biol* 1988, **107**(4):1325-1335.
29. Baert L: Hereditary polycystic kidney disease (adult form): a microdissection study of two cases at an early stage of the disease. *Kidney Int* 1978, **13**(6):519-525.
30. Wilson PD: Polycystic kidney disease. *N Engl J Med* 2004, **350**(2):151-164.
31. Riley DJ, Achinger SG, Chen Y: Expression of *Nek1* protein kinase during kidney development and after ischemic tubular injury. *J Am Soc Nephrol* 2003, **14**:366A.
32. Patel V, Chowdhury R, Igarashi P: Advances in the pathogenesis and treatment of polycystic kidney disease. *Curr Opin Nephrol Hypertens* 2009, **18**(2):99-106.
33. Mahjoub MR, Trapp ML, Quarmby LM: NIMA-related kinases defective in murine models of polycystic kidney diseases localize to primary cilia and centrosomes. *J Am Soc Nephrol* 2005, **16**(12):3485-3489.
34. Hopp K, Ward CJ, Hommerding CJ, Nasr SH, Tuan HF, Gainullin VG, Rossetti S, Torres VE, Harris PC: Functional polycystin-1 dosage governs autosomal dominant polycystic kidney disease severity. *J Clin Invest* 2012, **122**(11):4257-4273.
35. Boletta A, Qian F, Onuchic LF, Bhunia AK, Phakdeekitcharoen B, Hanaoka K, Guggino W, Monaco L, Germino GG: Polycystin-1, the gene product of *PKD1*, induces resistance to apoptosis and spontaneous tubulogenesis in MDCK cells. *Mol Cell* 2000, **6**(5):1267-1273.
36. Qian F, Germino FJ, Cai Y, Zhang X, Somlo S, Germino GG: *PKD1* interacts with *PKD2* through a probable coiled-coil domain. *Nat Genet* 1997, **16**(2):179-183.
37. Yim H, Sung CK, You J, Tian Y, Benjamin T: *Nek1* and *TAZ* interact to maintain normal levels of polycystin 2. *J Am Soc Nephrol* 2011, **22**(5):832-837.
38. Burtsey S, Riera M, Ribe E, Pennekamp P, Passage E, Rance R, Dworniczak B, Fontes M: Overexpression of *PKD2* in the mouse is associated with renal tubulopathy. *Nephrol Dial Transplant* 2008, **23**(4):1157-1165.
39. Park EY, Sung YH, Yang MH, Noh JY, Park SY, Lee TY, Yook YJ, Yoo KH, Roh KJ, Kim I, Hwang YH, Oh GT, Seong JK, Ahn C, Lee HW, Park JH: Cyst formation in kidney via B-Raf signaling in the *PKD2* transgenic mice. *J Biol Chem* 2009, **284**(11):7214-7222.
40. Luyten A, Su X, Gondela S, Chen Y, Rompani S, Takakura A, Zhou J: Aberrant regulation of planar cell polarity in polycystic kidney disease. *J Am Soc Nephrol* 2010, **21**(9):1521-1532.
41. Patel V, Li L, Cobo-Stark P, Shao X, Somlo S, Lin F, Igarashi P: Acute kidney injury and aberrant planar cell polarity induce cyst formation in mice lacking renal cilia. *Hum Mol Genet* 2008, **17**(11):1578-90.



42. Verdeguer F, Le Corre S, Fischer E, Callens C, Garbay S, Doyen A, Igarashi P, Terzi F, Pontoglio M: **A mitotic transcriptional switch in polycystic kidney disease.** *Nat Med* 2010, **16**(1):106–110.
43. Harris PC: **What is the role of somatic mutation in autosomal dominant polycystic kidney disease?** *J Am Soc Nephrol* 2010, **21**(7):1073–1076.
44. Harris PC, Torres VE: **Polycystic kidney disease.** *Annu Rev Med* 2009, **60**:321–337.
45. Liu S, Lu W, Obara T, Kuida S, Lehoczy J, Dewar K, Drummond IA, Beier DR: **A defect in a novel Nek-family kinase causes cystic kidney disease in the mouse and in zebrafish.** *Development* 2002, **129**(24):5839–5846.
46. Hennigar RA, Schulte BA, Spicer SS: **Heterogeneous distribution of glycoconjugates in human kidney tubules.** *Anat Rec* 1985, **211**(4):376–390.
47. Horster MF, Braun GS, Huber SM: **Embryonic renal epithelia: induction, nephrogenesis, and cell differentiation.** *Physiol Rev* 1999, **79**(4):1157–1191.
48. Truong LD, Phung VT, Yoshikawa Y, Mattioli CA: **Glycoconjugates in normal human kidney. A histochemical study using 13 biotinylated lectins.** *Histochemistry* 1988, **90**(1):51–60.
49. Brown NE, Murcia NS: **Delayed cystogenesis and increased ciliogenesis associated with the re-expression of polaris in Tg737 mutant mice.** *Kidney Int* 2003, **63**(4):1220–1229.
50. Faraggiana T, Bernstein J, Strauss L, Churg J: **Use of lectins in the study of histogenesis of renal cysts.** *Lab Invest* 1985, **53**(5):575–579.
51. Grantham JJ, Geiser JL, Evan AP: **Cyst formation and growth in autosomal dominant polycystic kidney disease.** *Kidney Int* 1987, **31**(5):1145–1152.
52. Woo D: **Apoptosis and loss of renal tissue in polycystic kidney diseases.** *N Engl J Med* 1995, **333**(1):18–25.
53. Chen Y, Chen C-F, Polci R, Wei R, Riley DJ, Chen P-L: **Increased Nek1 expression in renal cell carcinoma cells is associated with decreased sensitivity to DNA damaging treatment.** *Oncotarget* 2014, **5**(12):4285–94.

doi:10.1186/s12929-014-0063-5

**Cite this article as:** Chen et al.: Expression of Nek1 during kidney development and cyst formation in multiple nephron segments in the Nek1-deficient kat2J mouse model of polycystic kidney disease. *Journal of Biomedical Science* 2014 **21**:63.

**Submit your next manuscript to BioMed Central  
and take full advantage of:**

- Convenient online submission
- Thorough peer review
- No space constraints or color figure charges
- Immediate publication on acceptance
- Inclusion in PubMed, CAS, Scopus and Google Scholar
- Research which is freely available for redistribution

Submit your manuscript at  
www.biomedcentral.com/submit

